

V&V Reference Report

L2 ASCDS Version : 7.6.9

Observation 2290 - L2 Version 001
Chandra X-Ray Center

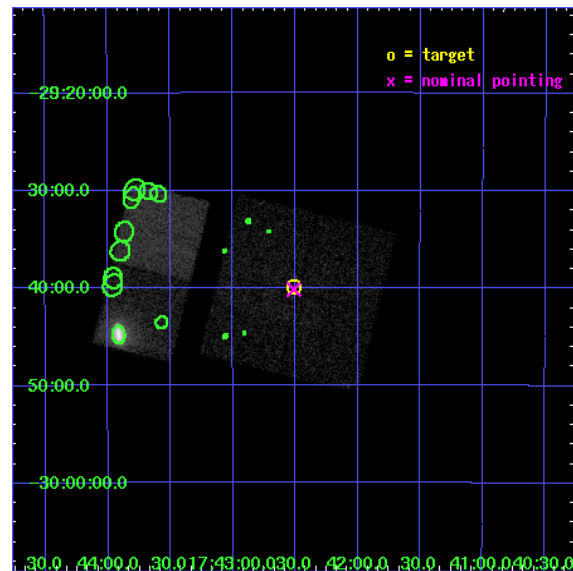
L2 Processing Date : Dec 15 2006

Contents

1	Front	2
2	OBI	3
2.1	OBI	3
2.1.1	Images	3
2.1.2	Bias	3
2.1.3	Parameters	4
2.1.4	Events	4
2.2	Compared Parameters	5
2.3	Aspect	6
2.4	Star Slots	9
2.4.1	Slot 3	9
2.4.2	Slot 4	10
2.4.3	Slot 5	11
2.4.4	Slot 6	12
2.4.5	Slot 7	13
2.5	FID Slots	14
2.5.1	Slot 0	14
2.5.2	Slot 1	15
2.5.3	Slot 2	16
3	Point Sources	17
A	Summary	18
A.1	Status	18
A.2	Comments	18

1 Front

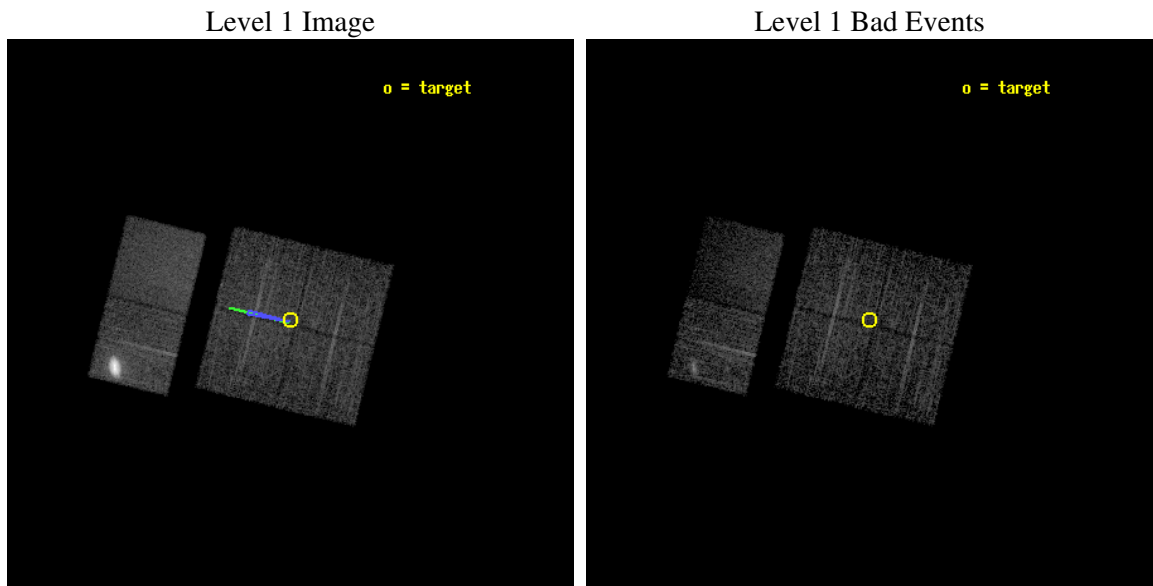
seq_num	900117
obs_id	2290
title	CHANDRA SURVEY OF THE GALACTIC RIDGE AROUND THE MILKY WAY CENTER
observer	Prof. Q. Daniel Wang
object	GCS 30
dtcycle	0
cycle	P
ra_targ	265.6288
dec_targ	-29.6645
ra_nom	265.62791726258
dec_nom	-29.669198443504
roll_nom	283.80725683174
revision	2
ontime	11760.000010952
livetime	11611.087809792
ontime0	11760.000010952
ontime1	11760.000010952
ontime2	11756.759040698
ontime3	11760.000010952
ontime6	11758.882734135
ontime7	11760.000010952
l2events	90850



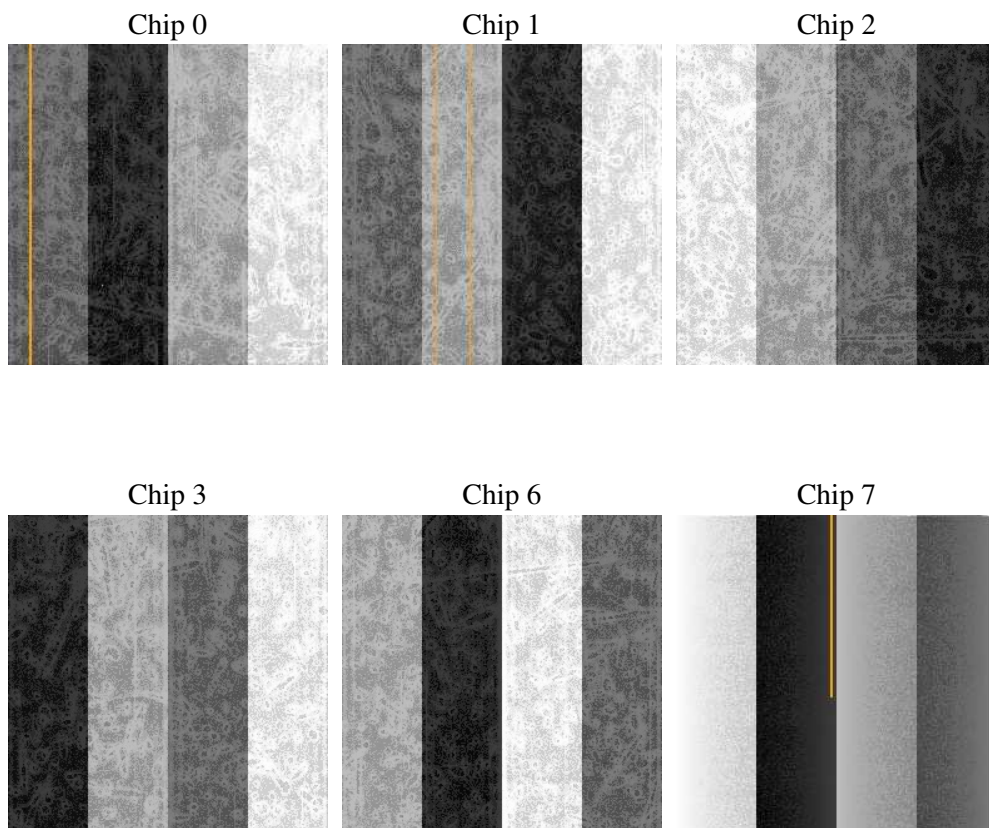
2 OBI

2.1 OBI

2.1.1 Images



2.1.2 Bias



2.1.3 Parameters

obi_num	0
ascdsver	7.6.9
caldbver	3.2.4
date	2006-12-15T15:37:51
revision	2

sched_exp_time	12000.000000
ontime	11764.855350554
ontime0	11764.855350554
ontime1	11764.855350554
ontime2	11761.614360392
ontime3	11764.855350554
ontime6	11761.614350408
ontime7	11764.855350554
l1events	241330

2.1.4 Events

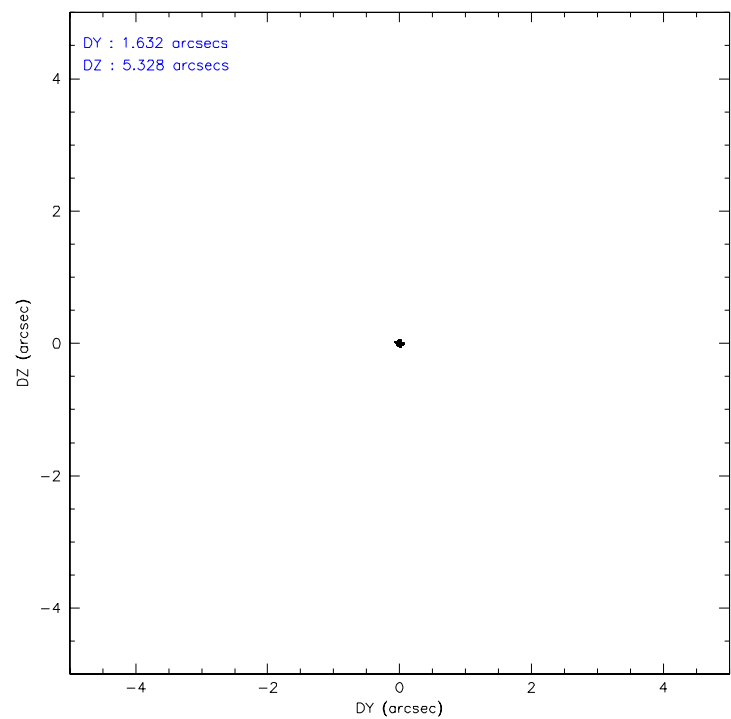
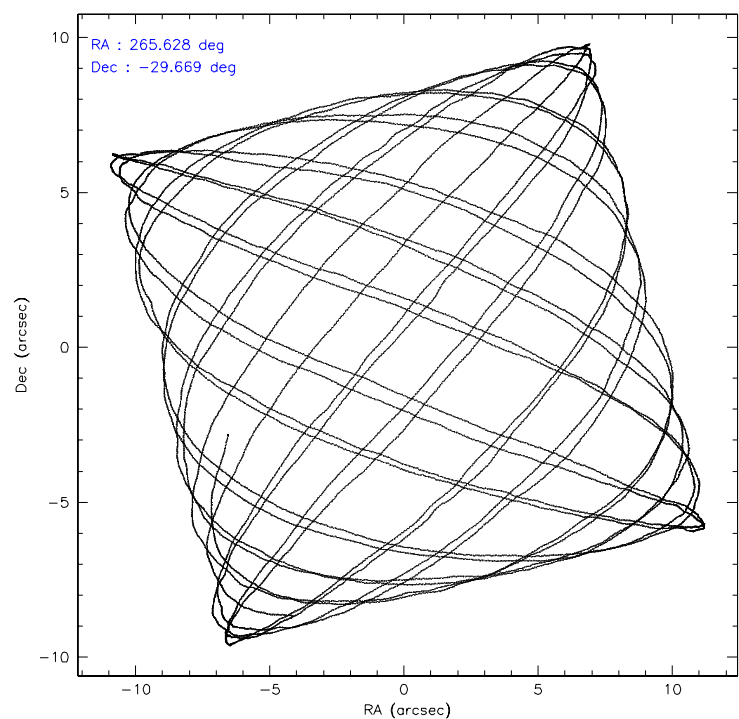
	ccd 0	ccd 1	ccd 2	ccd 3	ccd 6	ccd 7
level 1 events	28477	28628	31506	31726	81567	39426
rejected events	23130	23401	25183	25923	29124	19276
rejected %	81%	81%	79%	81%	35%	48%

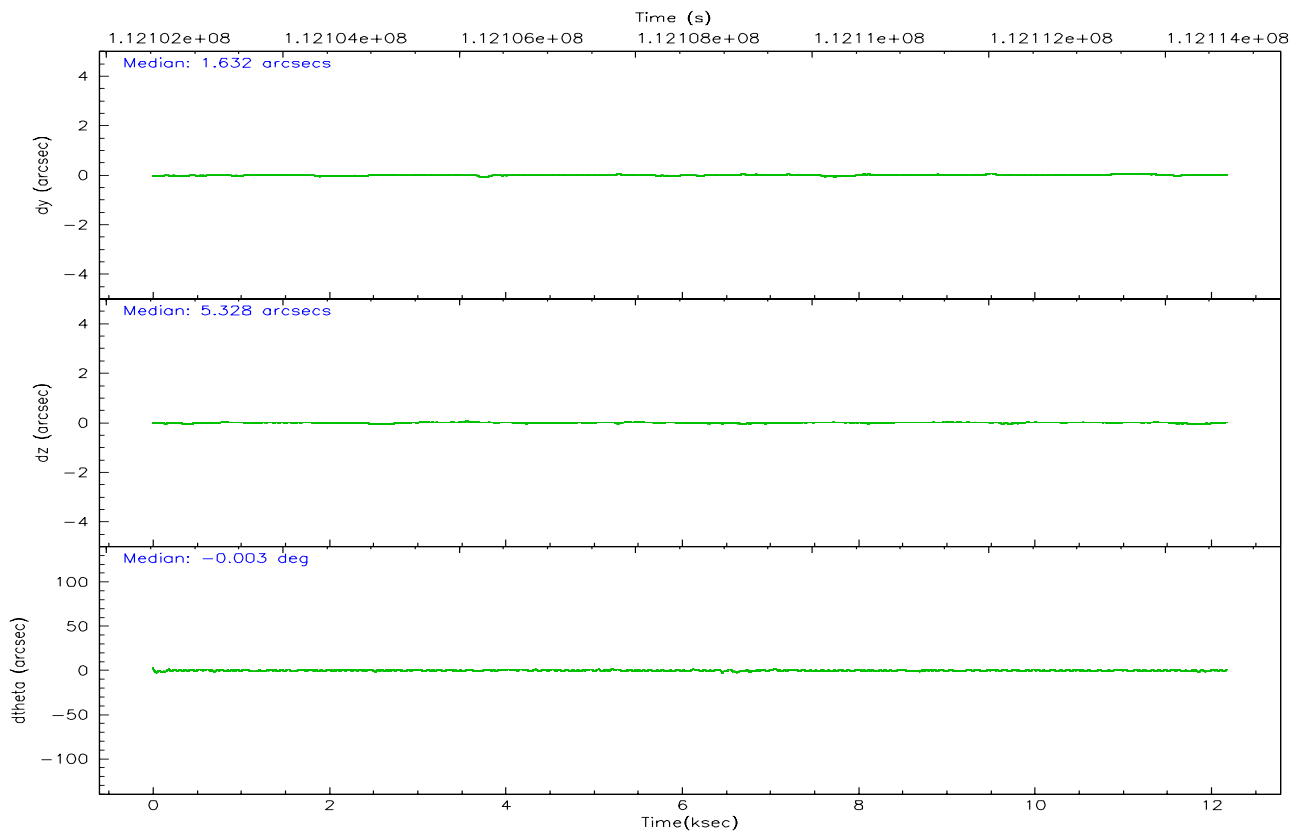
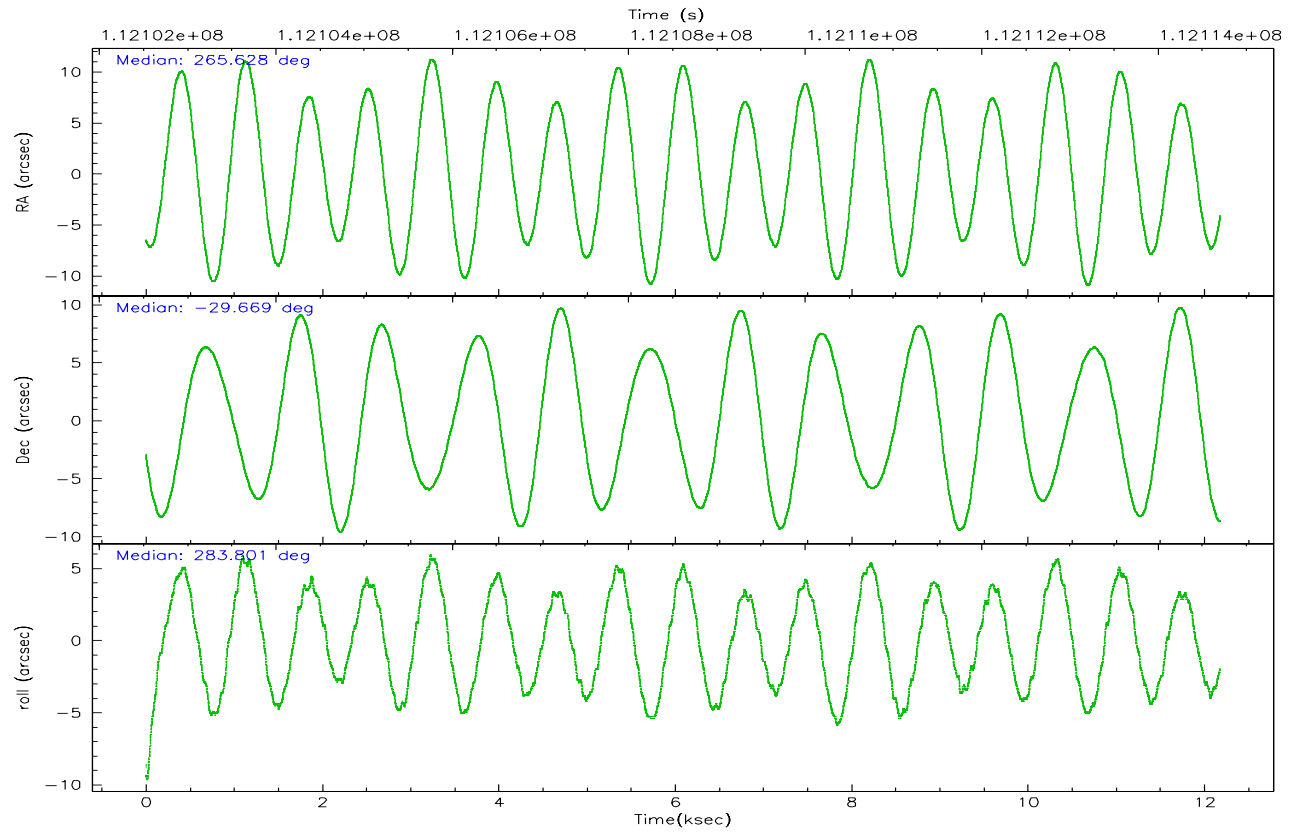
	ccd 0	ccd 1	ccd 2	ccd 3	ccd 6	ccd 7
grade 0 events	2643	2330	3354	2842	32479	1397
	9%	8%	10%	8%	39%	3%
grade 1 events	28	27	30	32	223	32
	0%	0%	0%	0%	0%	0%
grade 2 events	1018	1067	1166	1131	8358	5083
	3%	3%	3%	3%	10%	12%
grade 3 events	451	482	489	480	2930	1237
	1%	1%	1%	1%	3%	3%
grade 4 events	450	476	448	471	3041	1115
	1%	1%	1%	1%	3%	2%
grade 5 events	1205	1356	1170	1341	1774	3346
	4%	4%	3%	4%	2%	8%
grade 6 events	788	875	866	880	5651	11332
	2%	3%	2%	2%	6%	28%
grade 7 events	21894	22015	23983	24549	27111	15884
	76%	76%	76%	77%	33%	40%

2.2 Compared Parameters

Parameter	Planned	Actual	Parameter	Planned	Actual
Instrument	ACIS	ACIS	Obspar format version number	6	6
Detector	ACIS-012367	ACIS-012367	Obspar file type	PREDICTED	ACTUAL
Grating	NONE	NONE	Obspar update status	NONE	UPDATED
Data mode	FAINT	FAINT	Number of optional ACIS chips dropped	0	0
Observation mode	POINTING	POINTING	On-chip summing requested	N	N
Pointing RA	265.606049	265.6279172625793	Subarray requested	NONE	NONE
Pointing Dec	-29.649395	-29.66919844350421	Alternating exposures requested	N	N
Pointing Roll	283.587746	283.8072568317418	Primary exposure time	0.000000	3.2
Roll angle	283.600000	283.600000			
Roll tolerance	2.000000	2.000000			
Roll constraint allows 180D rotation	N	N			
SIM focus pos (mm)	-0.782348	-0.7809083437167272			
SIM defocus (mm)	0	0.001439871863259334			
SIM translation stage pos (mm)	-233.592463	-233.5874344608287			
SIM translation stage offset (mm)	0	-0.005018542100998502			
Observation start time	112102706.184000	112102330.02587			
Observation start date	2001-07-21T11:37:22	2001-07-21T11:32:10			
Observation end time	112114706.184000	112115019.52637			
Observation end date	2001-07-21T14:57:22	2001-07-21T15:03:39			
Read mode	TIMED	TIMED			

2.3 Aspect



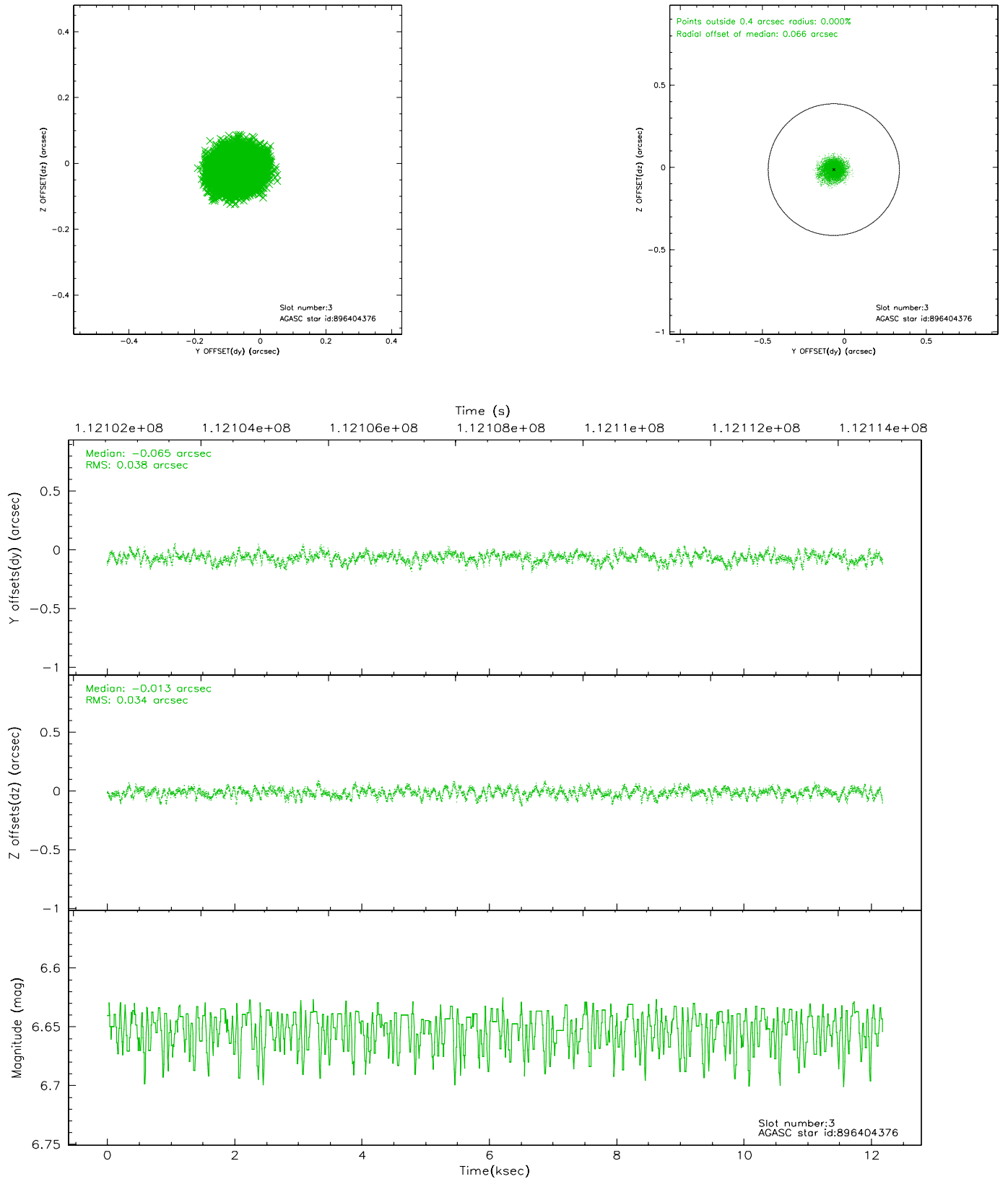


Slot Statistics

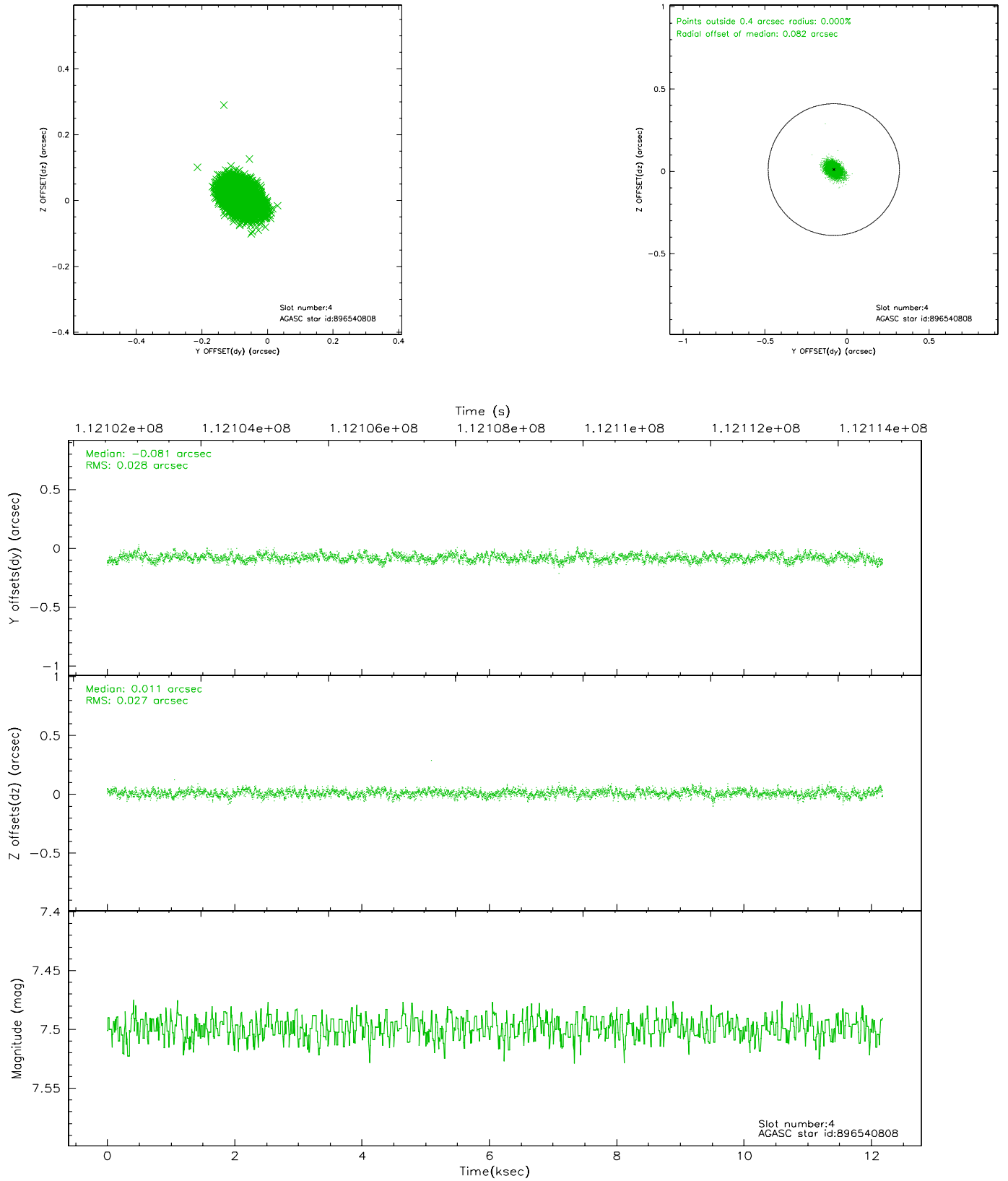
slot	status	id	mag	n_pts	med_dy	med_dz	dr1	dr2	ra	dec	mean_y	mean_z
0	FID	ACIS-I-2	7.15	2971	-0.014	-0.027	0.009	0.015	0.000000	0.000000	-755.98	-835.07
1	FID	ACIS-I-4	7.19	2970	-0.069	0.025	0.005	0.009	0.000000	0.000000	2157.82	1070.97
2	FID	ACIS-I-5	7.23	2970	-0.018	0.070	0.009	0.015	0.000000	0.000000	-1809.30	1069.30
3	GUIDE	896404376	6.65	5942	-0.065	-0.013	0.055	0.089	264.835179	-29.530972	-972.96	-2248.51
4	GUIDE	896540808	7.50	5943	-0.081	0.011	0.041	0.067	265.985401	-29.308604	-910.52	1445.22
5	GUIDE	966924920	8.09	5942	0.131	-0.005	0.057	0.091	265.875401	-30.176961	2044.66	369.24
6	GUIDE	896405480	8.24	5942	0.019	-0.026	0.054	0.090	265.220460	-29.599691	-454.30	-1131.26
7	GUIDE	896541168	8.15	5940	0.001	0.034	0.076	0.118	266.319970	-29.850801	1235.66	1995.12

2.4 Star Slots

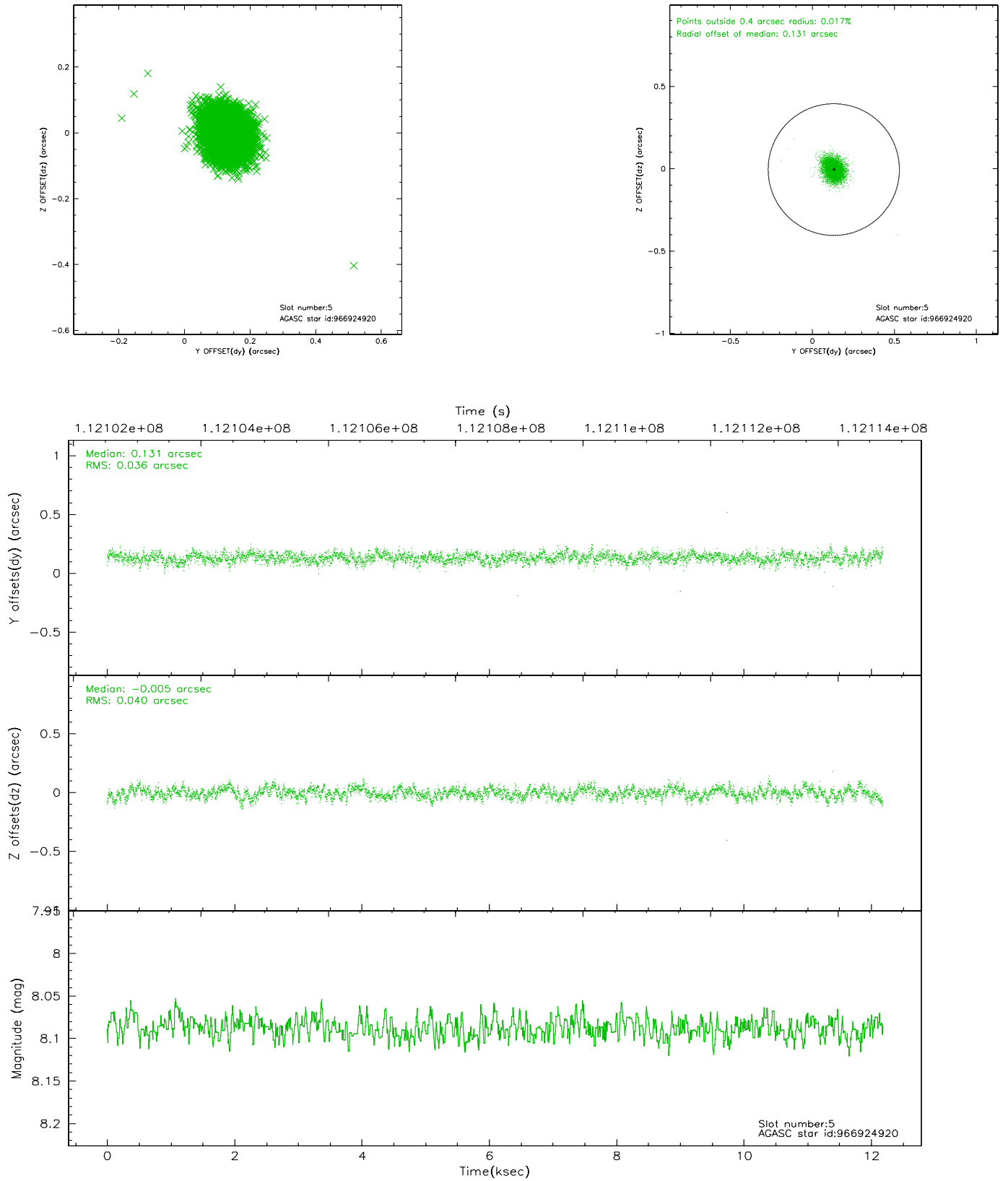
2.4.1 Slot 3



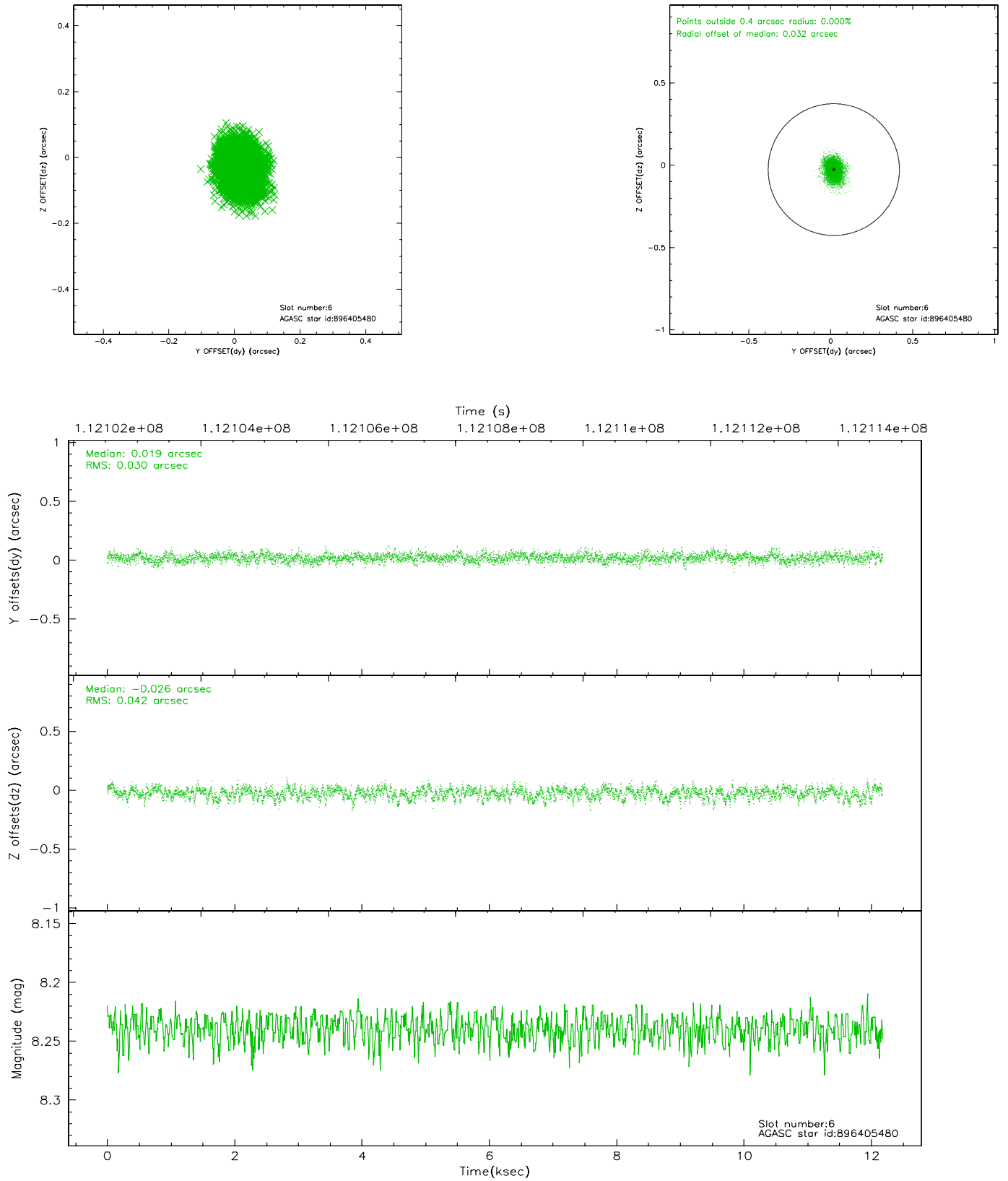
2.4.2 Slot 4



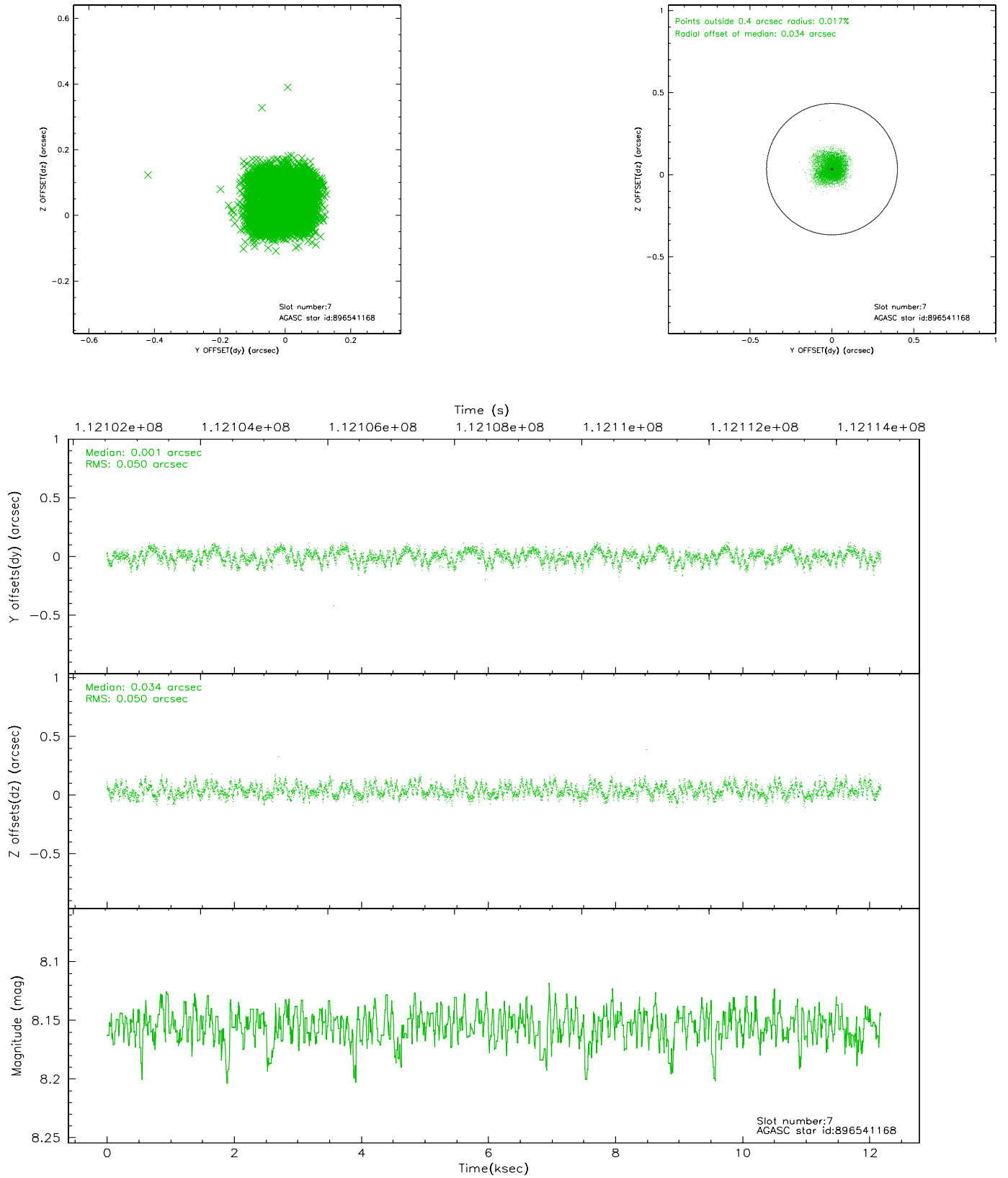
2.4.3 Slot 5



2.4.4 Slot 6

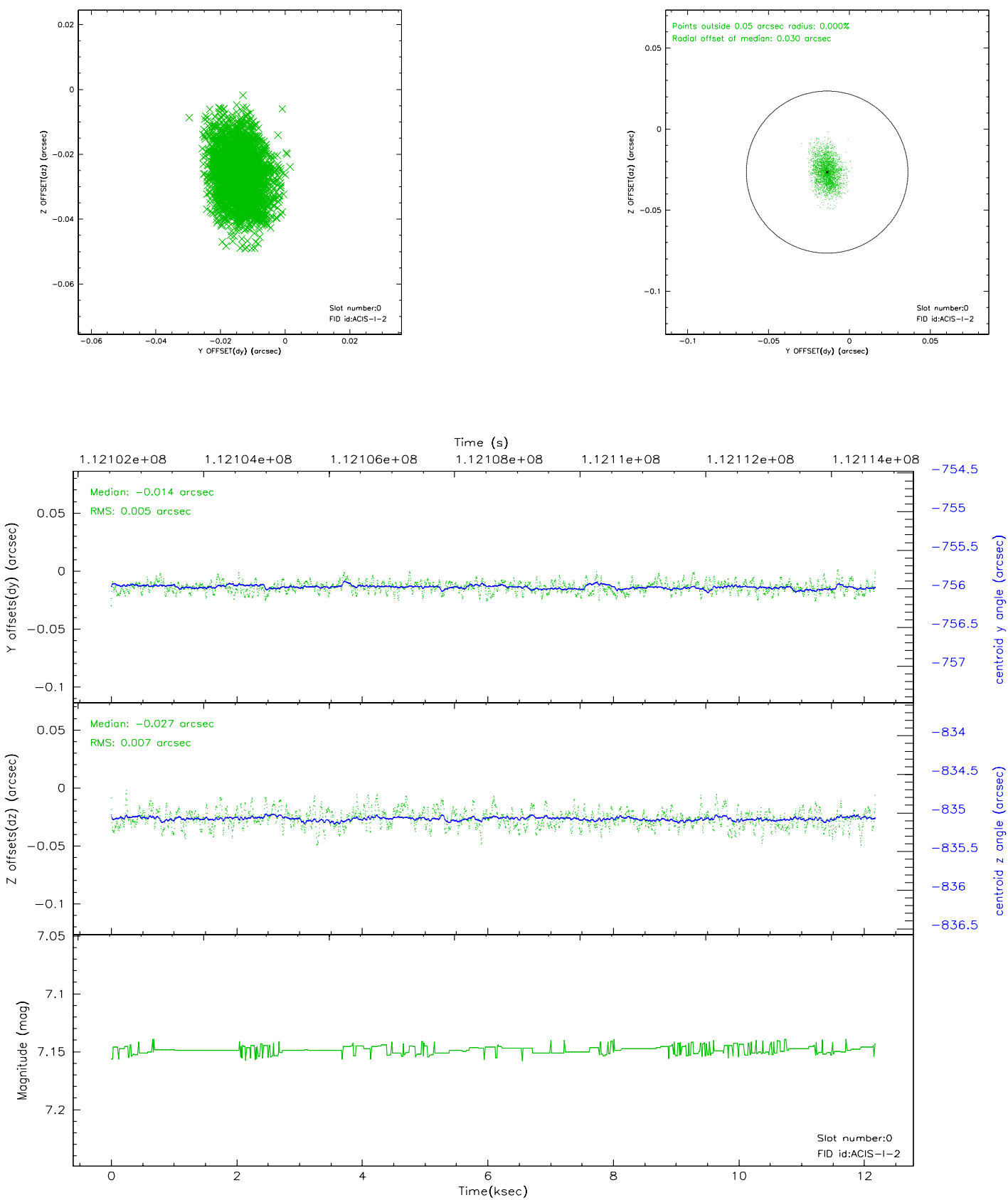


2.4.5 Slot 7

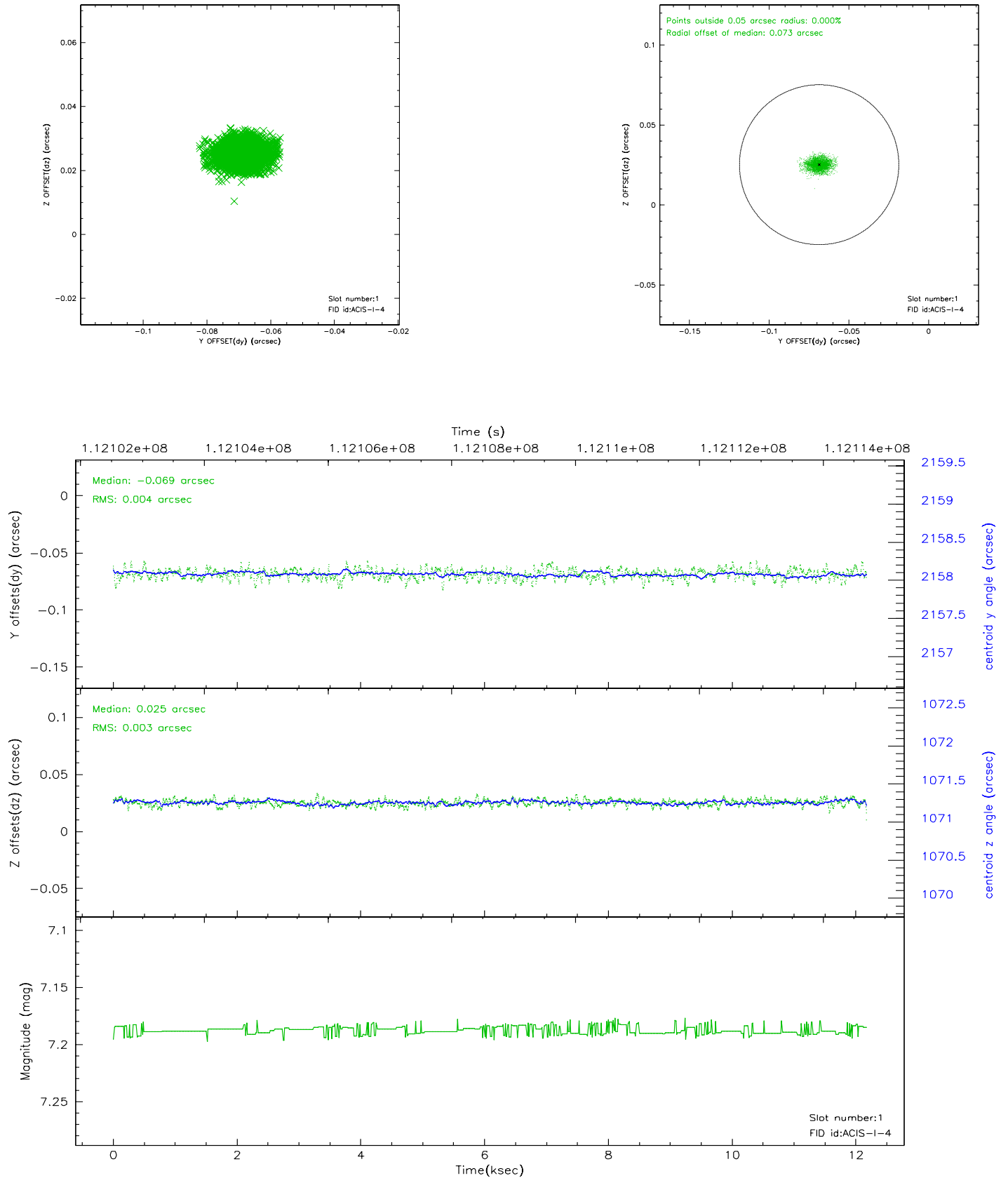


2.5 FID Slots

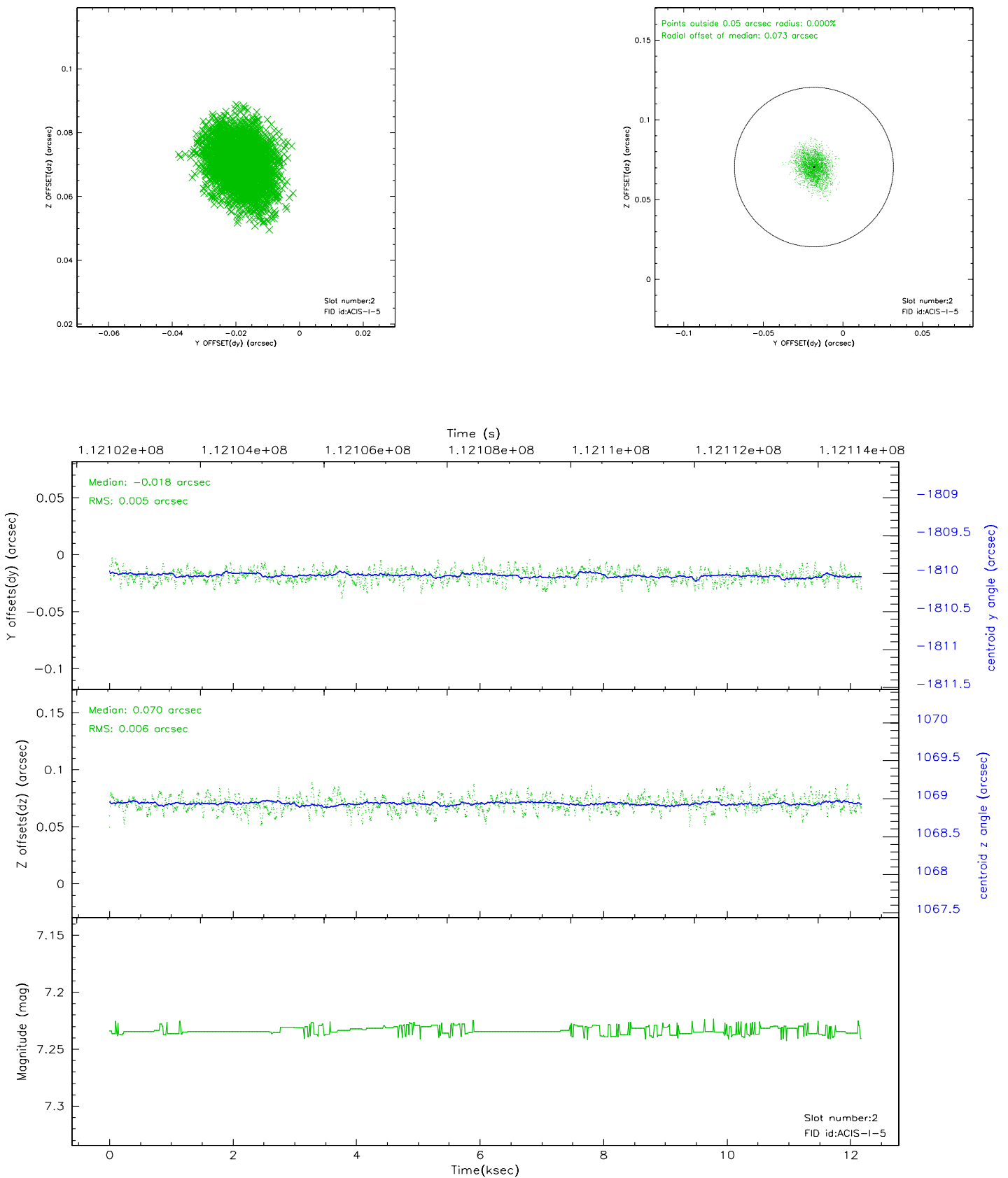
2.5.1 Slot 0



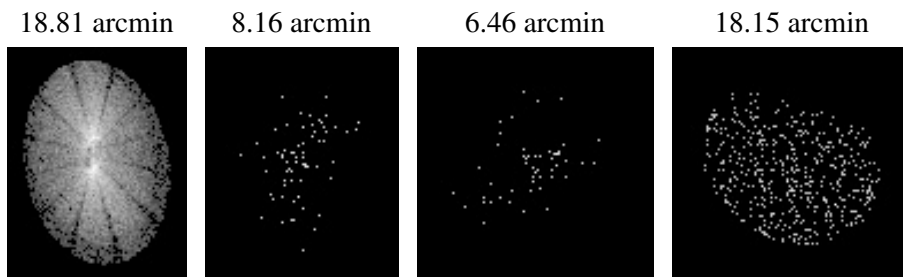
2.5.2 Slot 1



2.5.3 Slot 2



3 Point Sources



A Summary

A.1 Status

V&V Scientist	Jen Lauer
V&V Date (YYYY-MM-DD)	2006.12.15
V&V Edition	1
V&V Disposition and Status	OK
V&V Charge Time	11.76

A.2 Comments

Roll constraint met.