

V&V Reference Report

L2 ASCDS Version : 7.6.9

Observation 2284 - L2 Version 001
Chandra X-Ray Center

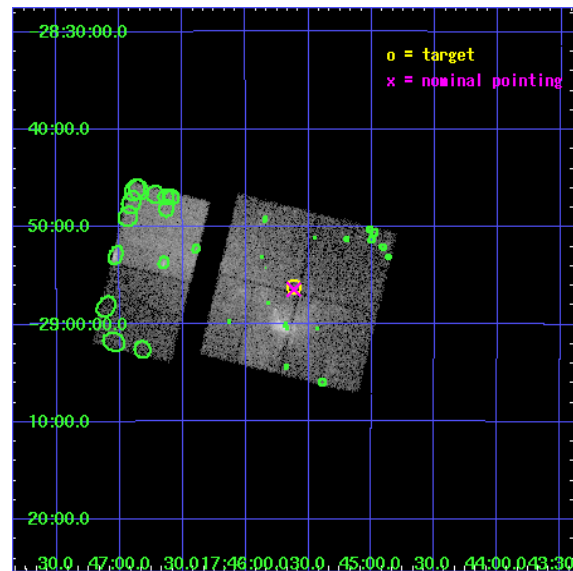
L2 Processing Date : Dec 14 2006

Contents

1	Front	2
2	OBI	3
2.1	OBI	3
2.1.1	Images	3
2.1.2	Bias	3
2.1.3	Parameters	4
2.1.4	Events	4
2.2	Compared Parameters	5
2.3	Aspect	6
2.4	Star Slots	9
2.4.1	Slot 3	9
2.4.2	Slot 4	10
2.4.3	Slot 5	11
2.4.4	Slot 6	12
2.4.5	Slot 7	13
2.5	FID Slots	14
2.5.1	Slot 0	14
2.5.2	Slot 1	15
2.5.3	Slot 2	16
3	Point Sources	17
A	Summary	18
A.1	Status	18
A.2	Comments	18

1 Front

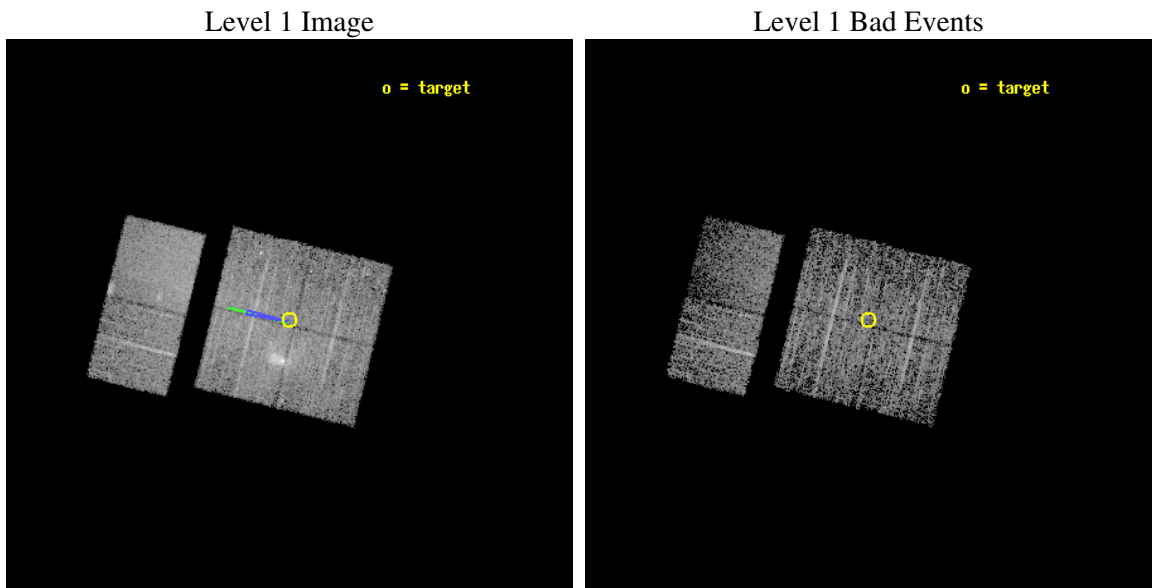
seq_num	900111
obs_id	2284
title	CHANDRA SURVEY OF THE GALACTIC RIDGE AROUND THE MILKY WAY CENTER
observer	Prof. Q. Daniel Wang
object	GCS 14
dtcycle	0
cycle	P
ra_targ	266.405
dec_targ	-28.9362
ra_nom	266.40415121249
dec_nom	-28.940896196268
roll_nom	283.80728276948
revision	2
ontime	10758.40001002
livetime	10622.170671162
ontime0	10758.40001002
ontime1	10758.40001002
ontime2	10758.40001002
ontime3	10758.40001002
ontime6	10758.40001002
ontime7	10758.40001002
l2events	85075



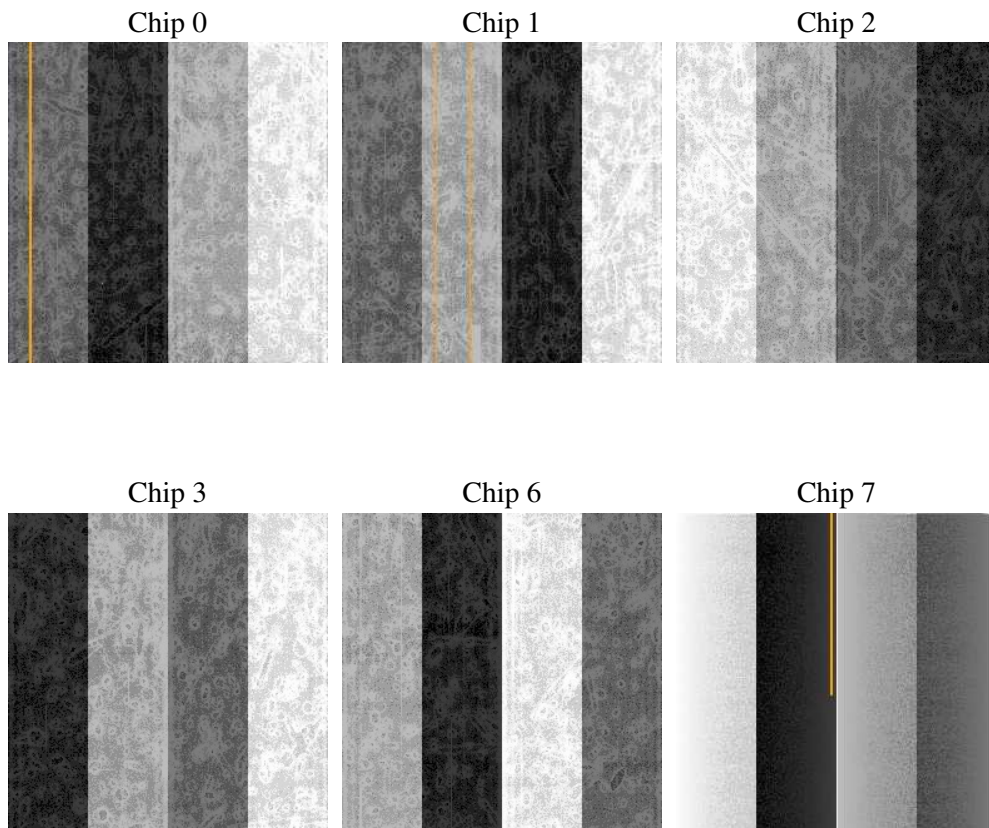
2 OBI

2.1 OBI

2.1.1 Images



2.1.2 Bias



2.1.3 Parameters

obi_num	0
ascdsver	7.6.9
caldbver	3.2.4
date	2006-12-14T12:56:49
revision	2

sched_exp_time	11000.000000
ontime	10763.383030996
ontime0	10763.383030996
ontime1	10763.383030996
ontime2	10763.383030996
ontime3	10763.383030996
ontime6	10763.383030996
ontime7	10763.383060902
l1events	225052

2.1.4 Events

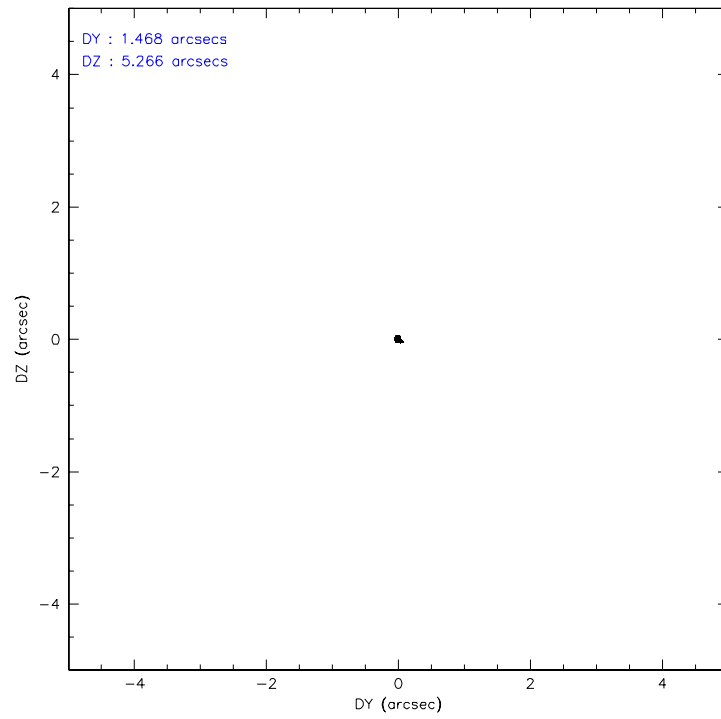
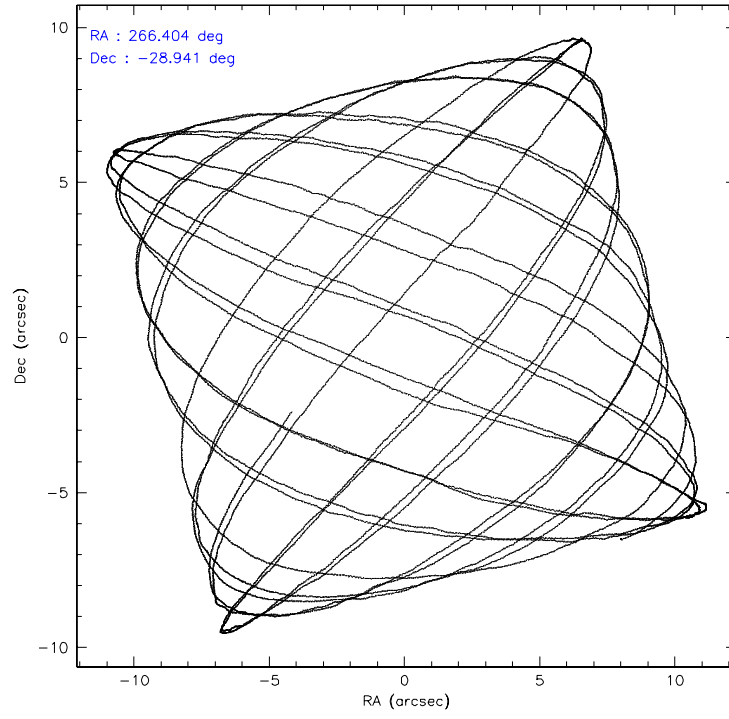
	ccd 0	ccd 1	ccd 2	ccd 3	ccd 6	ccd 7
level 1 events	35336	30115	46926	37219	31861	43595
rejected events	22130	21824	24587	22973	24764	18356
rejected %	62%	72%	52%	61%	77%	42%

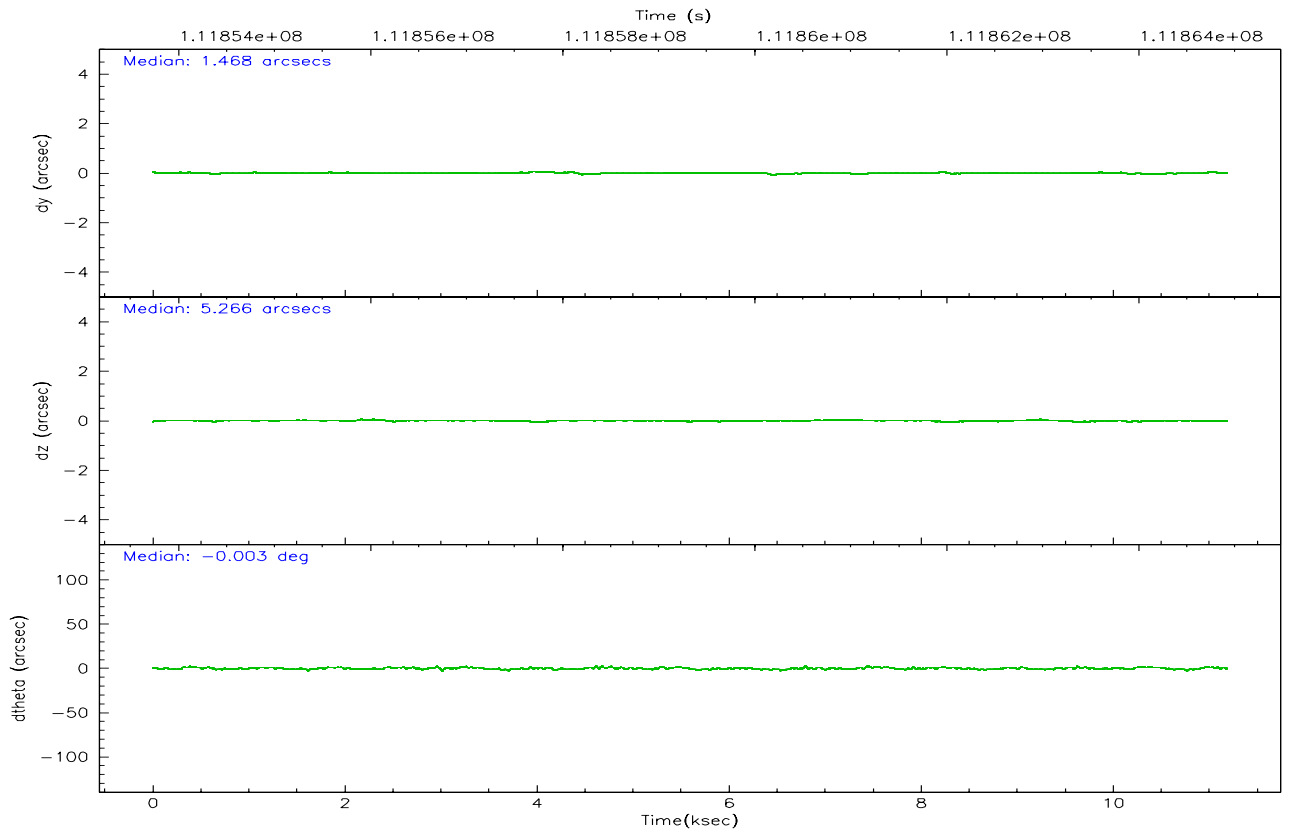
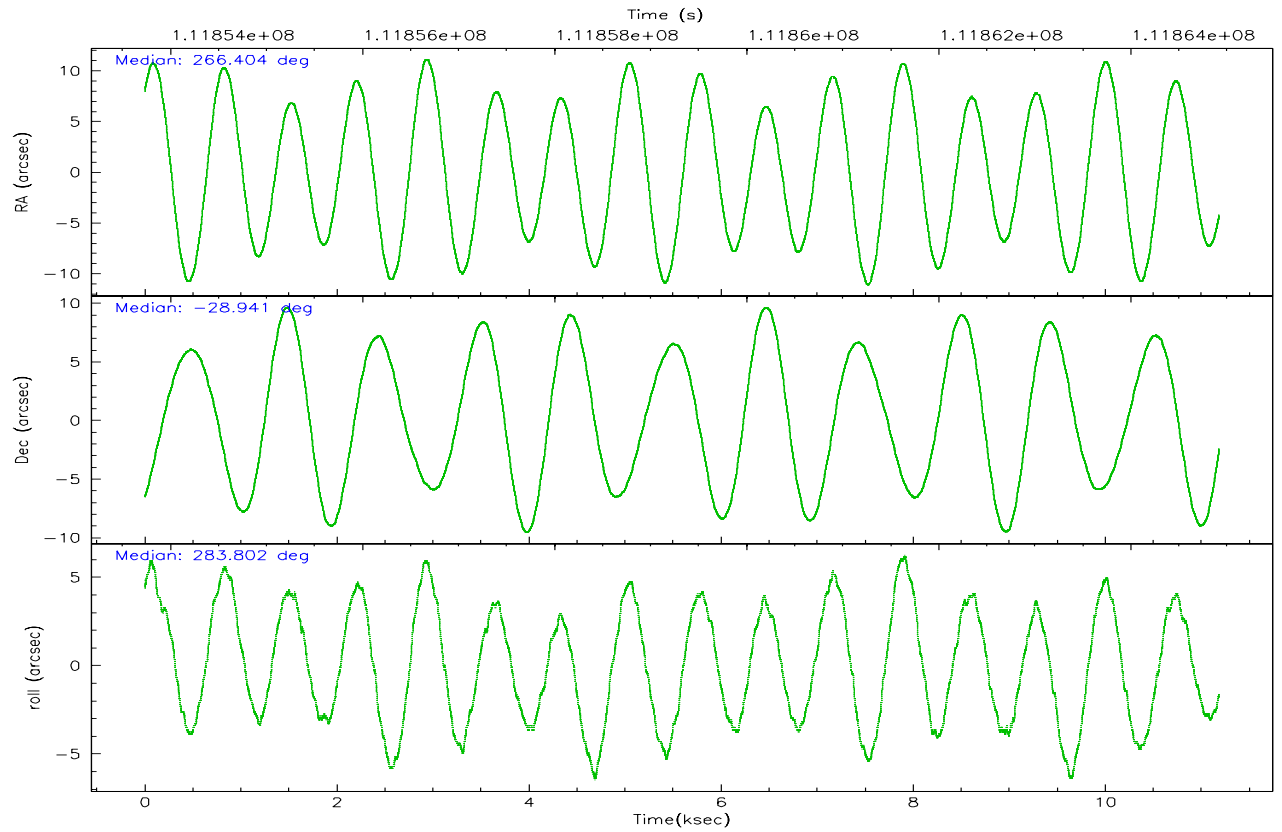
	ccd 0	ccd 1	ccd 2	ccd 3	ccd 6	ccd 7
grade 0 events	8113	4460	14446	8806	3841	2052
	22%	14%	30%	23%	12%	4%
grade 1 events	55	39	75	57	25	19
	0%	0%	0%	0%	0%	0%
grade 2 events	2145	1423	3376	2238	1211	6793
	6%	4%	7%	6%	3%	15%
grade 3 events	763	650	1248	847	507	1683
	2%	2%	2%	2%	1%	3%
grade 4 events	801	633	1226	859	520	1600
	2%	2%	2%	2%	1%	3%
grade 5 events	1117	1215	1066	1300	1320	3121
	3%	4%	2%	3%	4%	7%
grade 6 events	1397	1131	2058	1505	1021	13130
	3%	3%	4%	4%	3%	30%
grade 7 events	20945	20564	23431	21607	23416	15197
	59%	68%	49%	58%	73%	34%

2.2 Compared Parameters

Parameter	Planned	Actual	Parameter	Planned	Actual
Instrument	ACIS	ACIS	Obspar format version number	6	6
Detector	ACIS-012367	ACIS-012367	Obspar file type	PREDICTED	ACTUAL
Grating	NONE	NONE	Obspar update status	NONE	UPDATED
Data mode	FAINT	FAINT	Number of optional ACIS chips dropped	0	0
Observation mode	POINTING	POINTING	On-chip summing requested	N	N
Pointing RA	266.382411	266.4041512124912	Subarray requested	NONE	NONE
Pointing Dec	-28.921086	-28.94089619626759	Alternating exposures requested	N	N
Pointing Roll	283.588074	283.8072827694816	Primary exposure time	0.000000	3.2
Roll angle	283.600000	283.600000			
Roll tolerance	2.000000	2.000000			
Roll constraint allows 180D rotation	N	N			
SIM focus pos (mm)	-0.782348	-0.7809083437167272			
SIM defocus (mm)	0	0.001439871863259334			
SIM translation stage pos (mm)	-233.592463	-233.5874344608287			
SIM translation stage offset (mm)	0	-0.005018542100998502			
Observation start time	111853924.184000	111853548.16613			
Observation start date	2001-07-18T14:31:00	2001-07-18T14:25:48			
Observation end time	111864924.184000	111865058.40408			
Observation end date	2001-07-18T17:34:20	2001-07-18T17:37:38			
Read mode	TIMED	TIMED			

2.3 Aspect



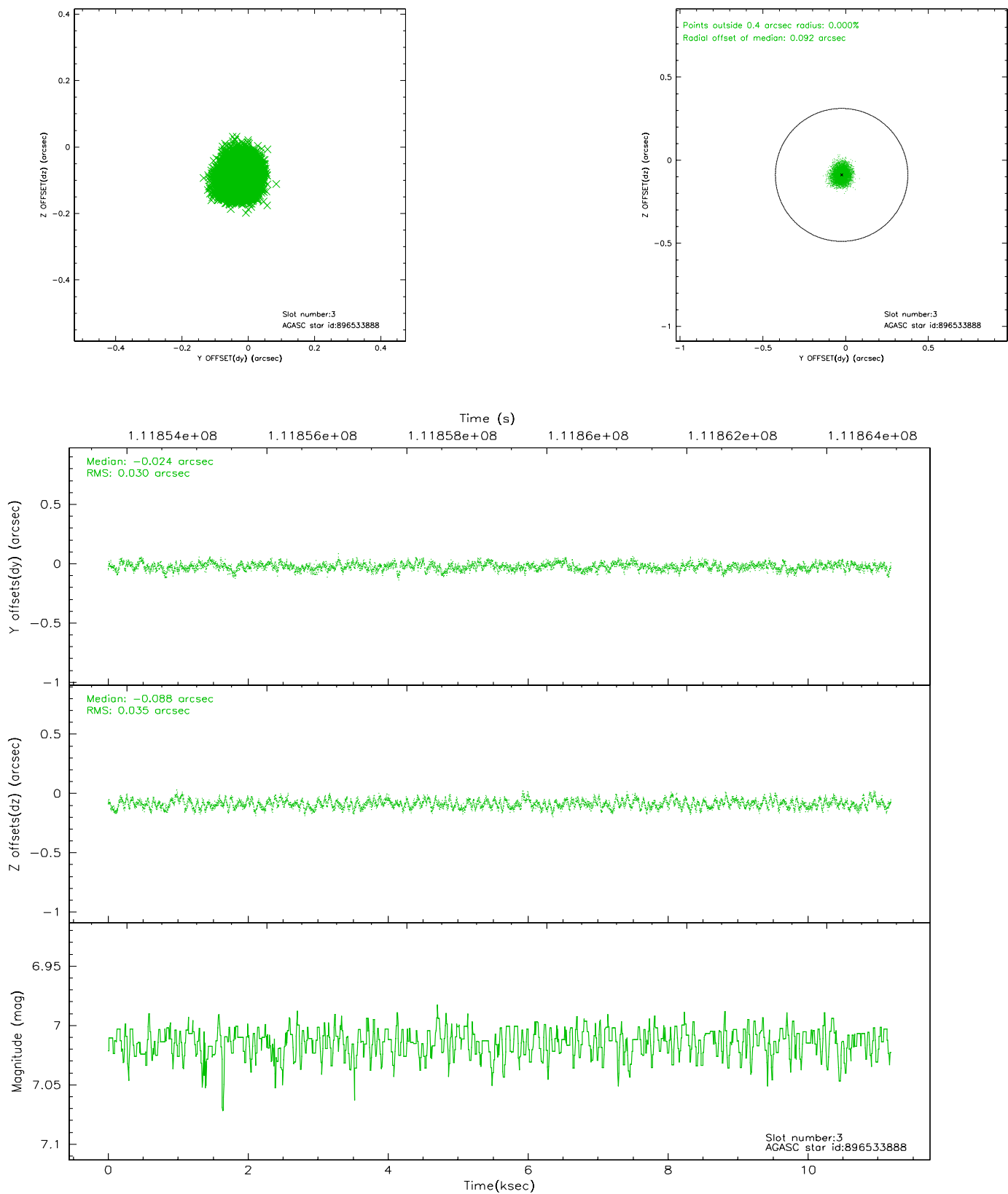


Slot Statistics

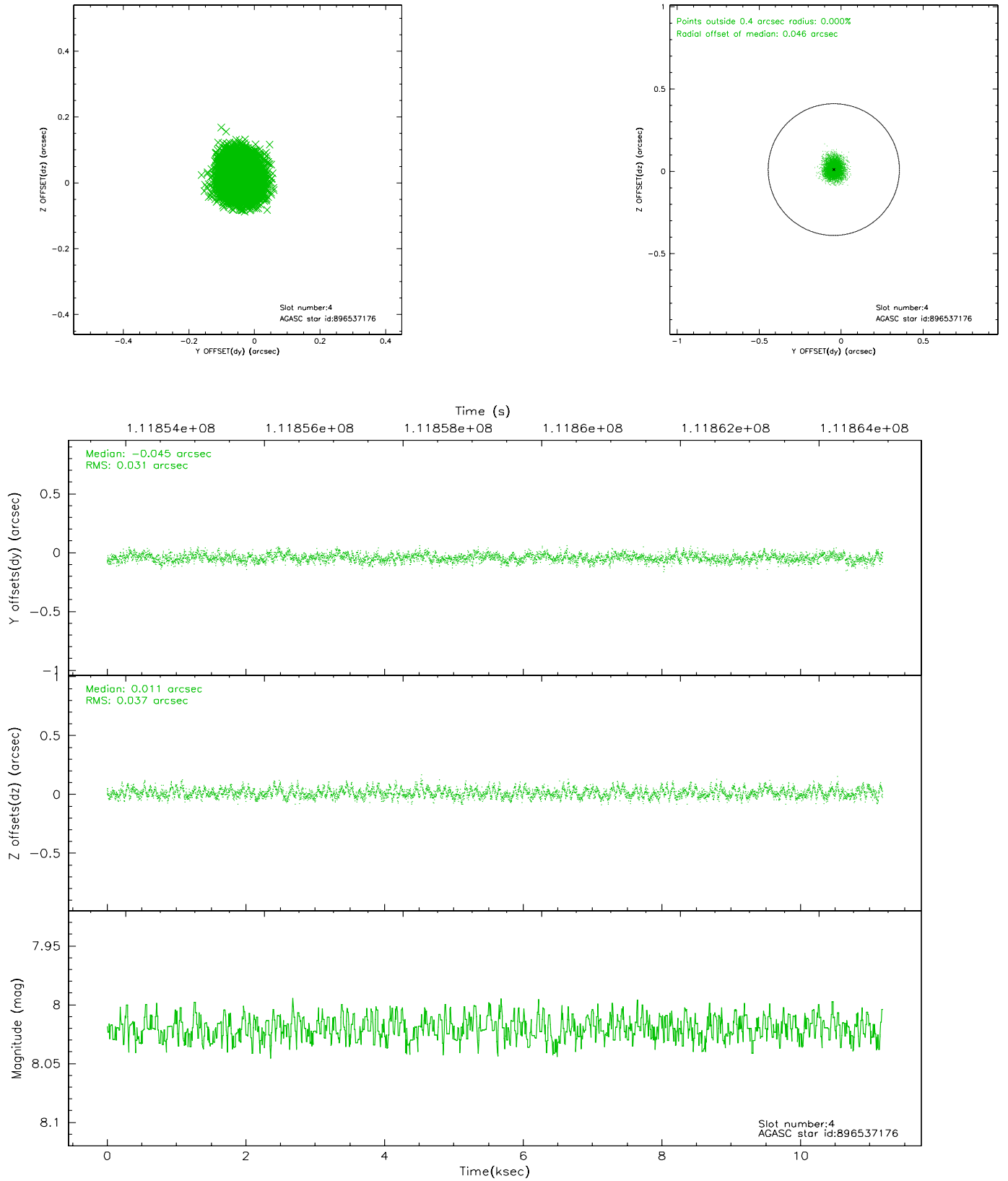
slot	status	id	mag	n_pts	med_dy	med_dz	dr1	dr2	ra	dec	mean_y	mean_z
0	FID	ACIS-I-2	7.15	2729	-0.011	-0.022	0.015	0.024	0.000000	0.000000	-755.81	-835.01
1	FID	ACIS-I-4	7.19	2729	-0.072	0.023	0.009	0.015	0.000000	0.000000	2157.96	1071.01
2	FID	ACIS-I-5	7.23	2729	-0.018	0.068	0.017	0.026	0.000000	0.000000	-1809.07	1069.39
3	GUIDE	896533888	7.01	5458	-0.024	-0.088	0.050	0.077	266.666434	-29.392757	1861.29	467.26
4	GUIDE	896537176	8.02	5458	-0.045	0.011	0.052	0.084	266.498272	-28.678259	-762.80	561.48
5	GUIDE	896540808	7.51	5458	-0.054	0.060	0.047	0.077	265.985401	-29.308604	1065.73	-1539.00
6	GUIDE	896536320	8.96	5457	0.129	0.047	0.062	0.103	266.369048	-29.307026	1341.51	-366.90
7	GUIDE	896535464	9.35	5456	-0.009	-0.031	0.089	0.145	266.962550	-28.408631	-1356.76	2218.20

2.4 Star Slots

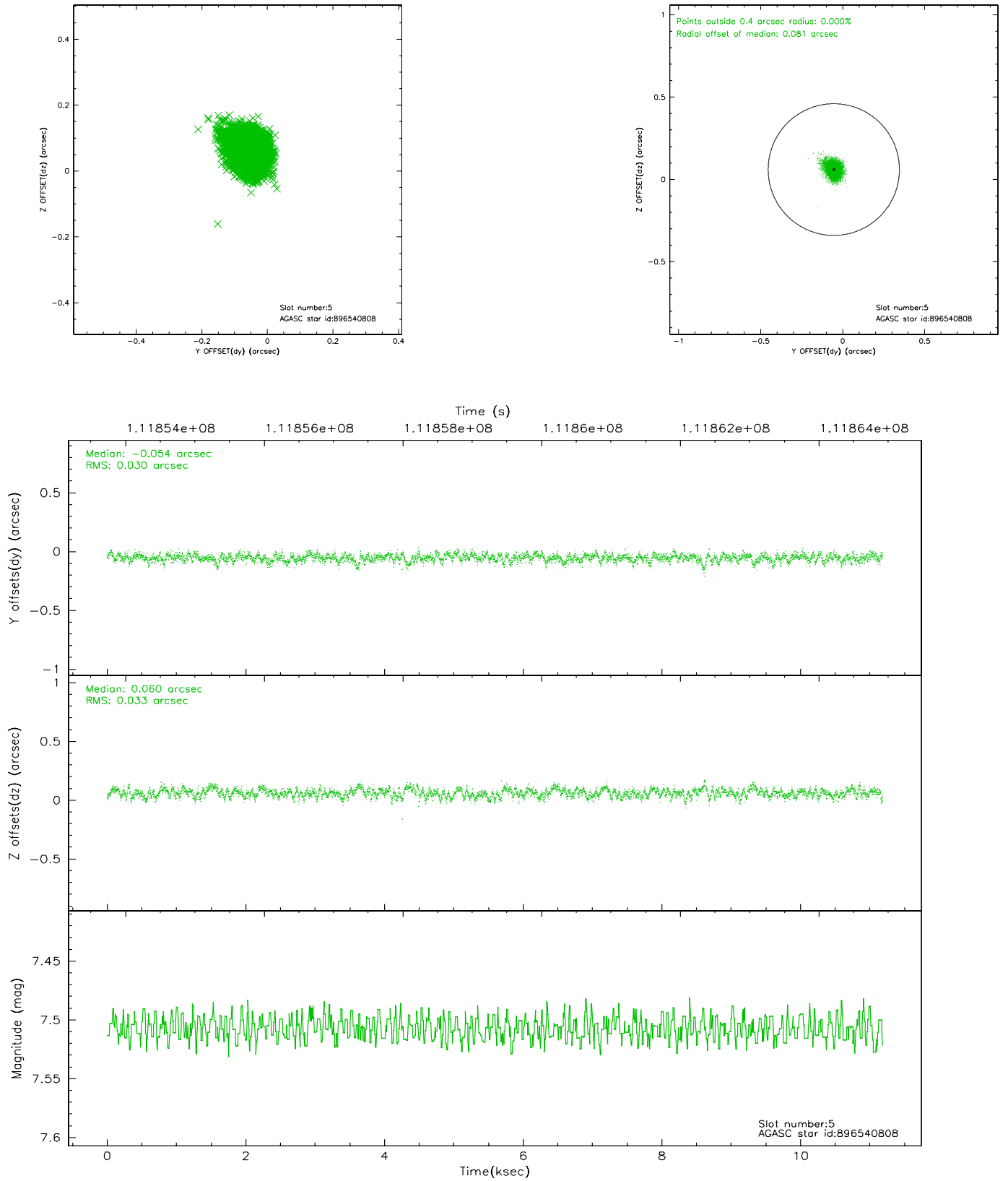
2.4.1 Slot 3



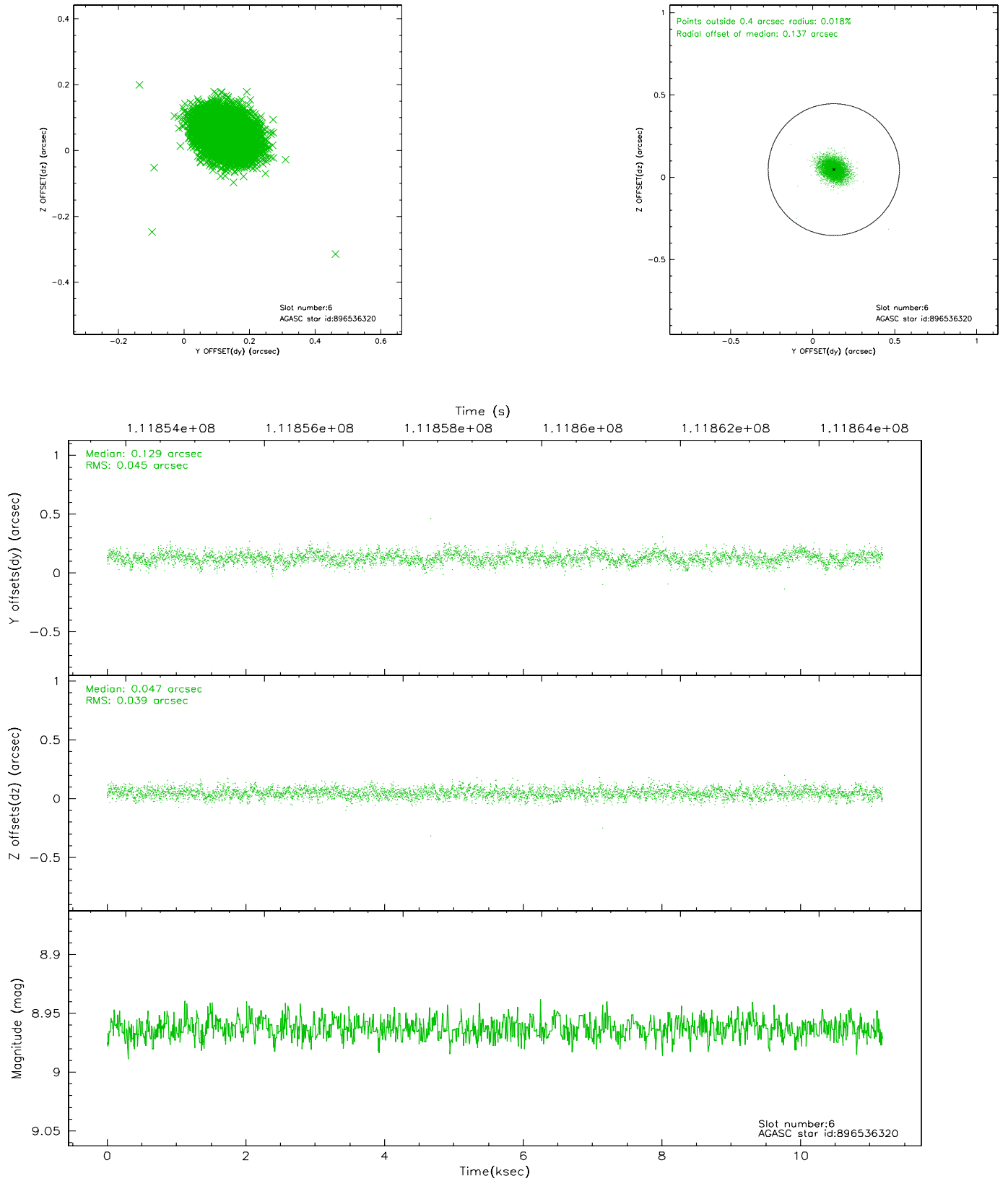
2.4.2 Slot 4



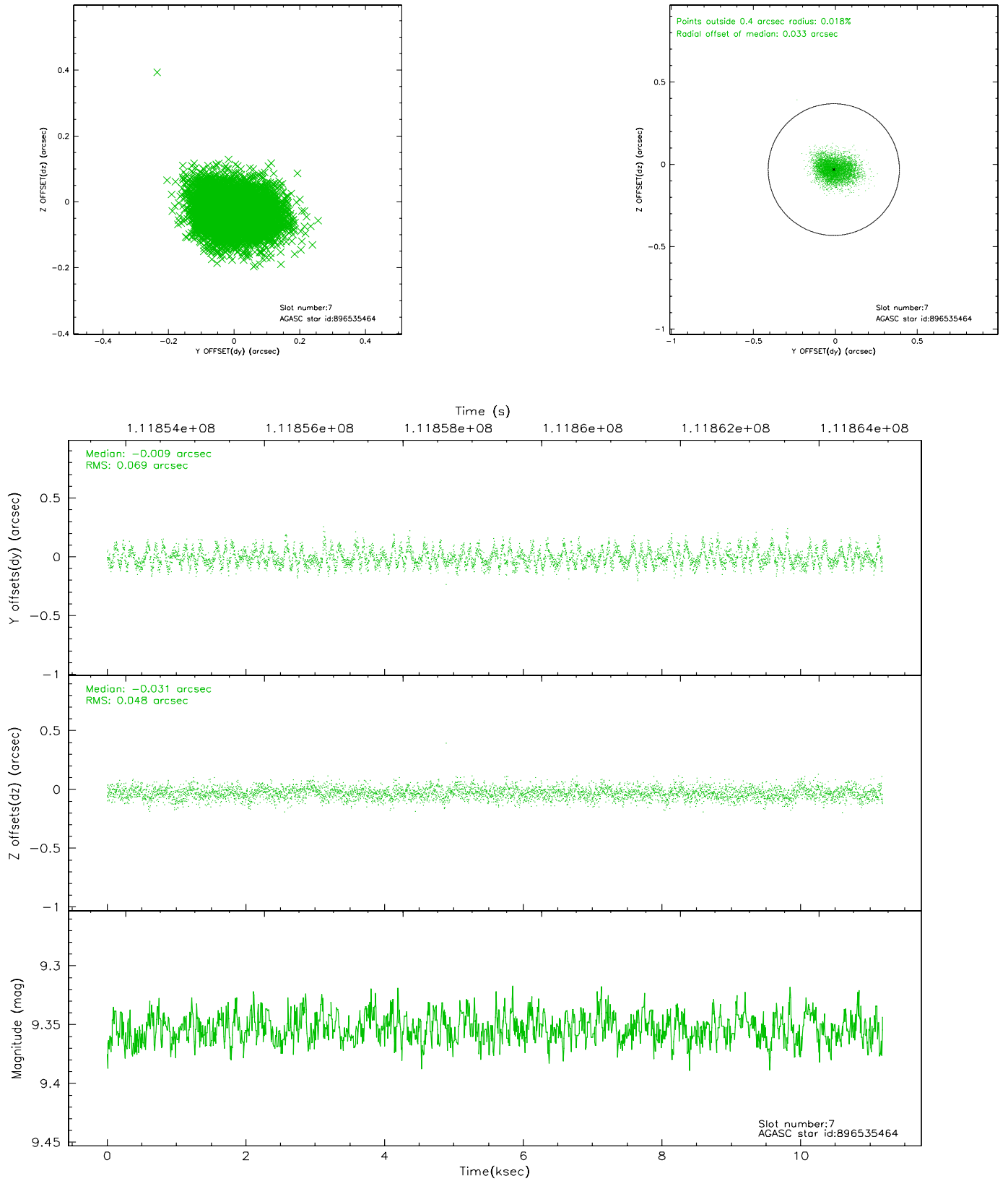
2.4.3 Slot 5



2.4.4 Slot 6

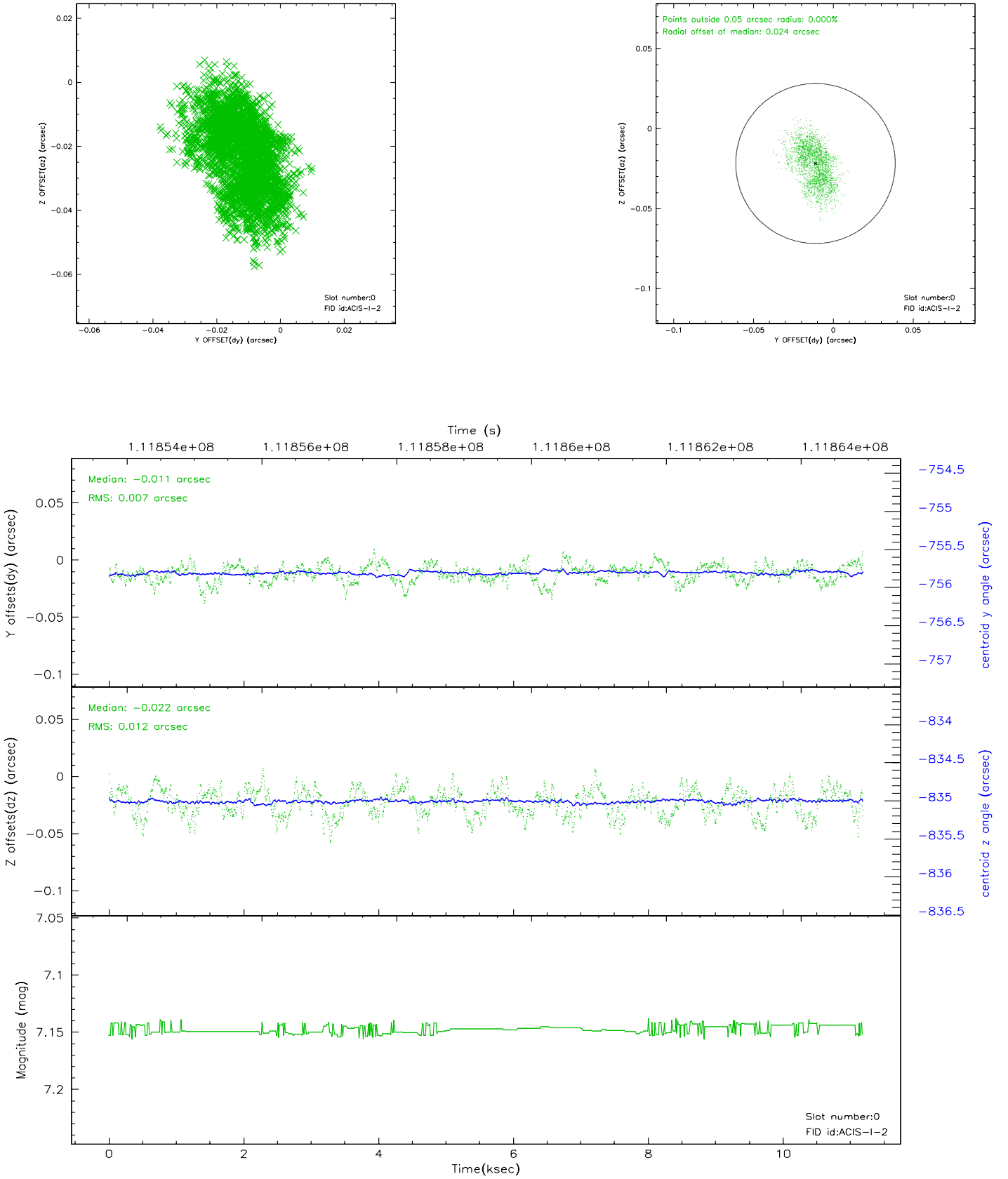


2.4.5 Slot 7

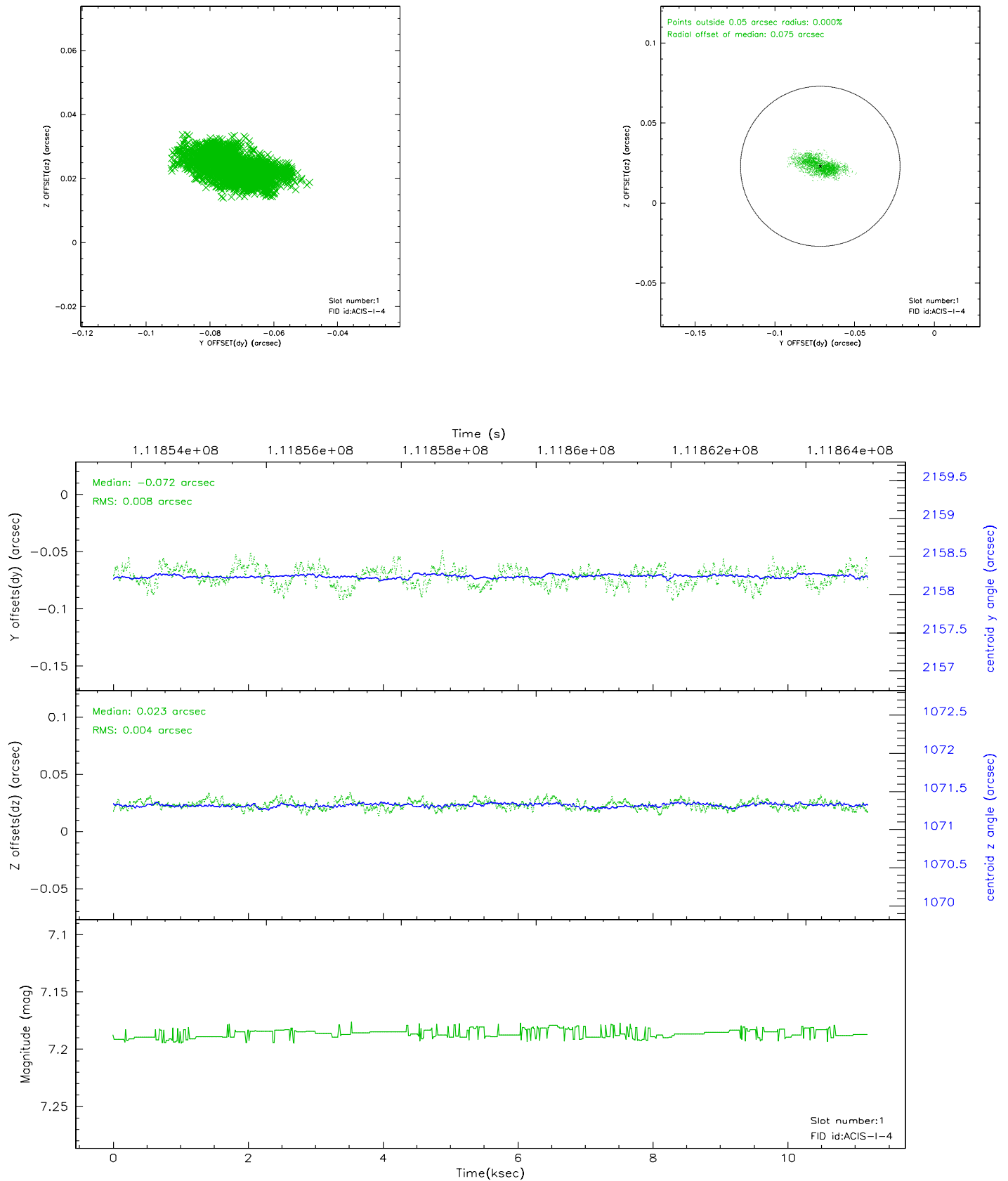


2.5 FID Slots

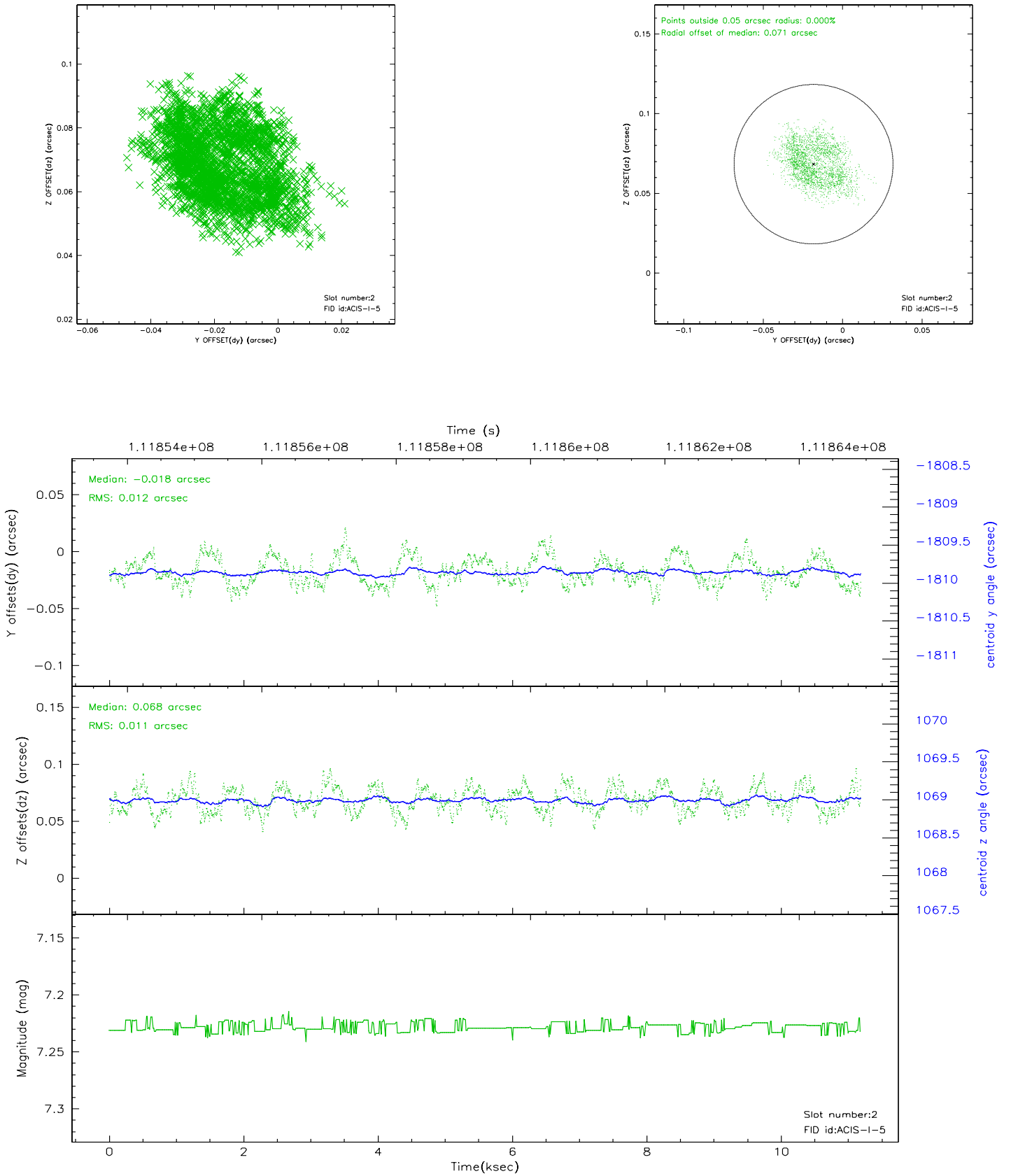
2.5.1 Slot 0



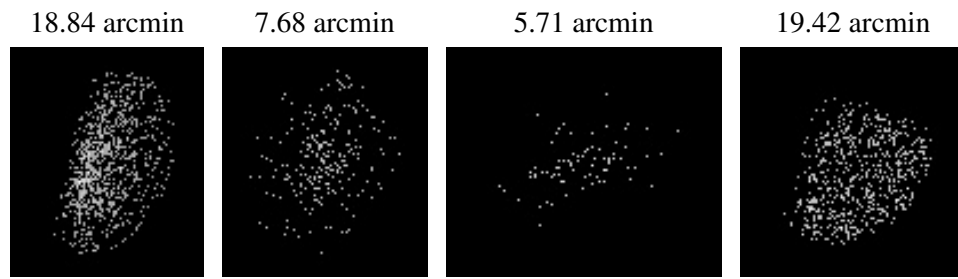
2.5.2 Slot 1



2.5.3 Slot 2



3 Point Sources



A Summary

A.1 Status

V&V Scientist	Beth Sundheim
V&V Date (YYYY-MM-DD)	2006.12.14
V&V Edition	1
V&V Disposition and Status	OK
V&V Charge Time	10.761

A.2 Comments

Roll constraint OK.