

V&V Reference Report

L2 ASCDS Version : 8.4.5

Observation 2280 - L2 Version 3
Chandra X-Ray Center

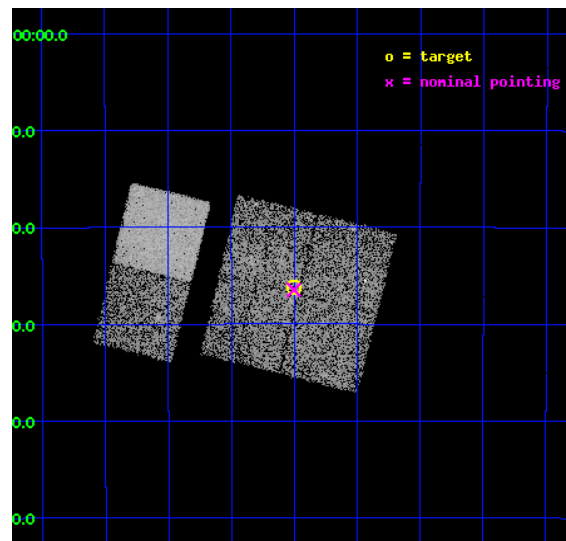
L2 Processing Date : Sep 20 2012

Contents

1	Front	2
2	OBI	3
2.1	OBI	3
2.1.1	Images	3
2.1.2	Bias	3
2.1.3	Parameters	4
2.1.4	Events	4
2.2	Compared Parameters	5
2.3	Aspect	6
2.4	Star Slots	9
2.4.1	Slot 3	9
2.4.2	Slot 4	10
2.4.3	Slot 5	11
2.4.4	Slot 6	12
2.4.5	Slot 7	13
2.5	FID Slots	14
2.5.1	Slot 0	14
2.5.2	Slot 1	15
2.5.3	Slot 2	16
A	Summary	17
A.1	Status	17
A.2	Comments	17

1 Front

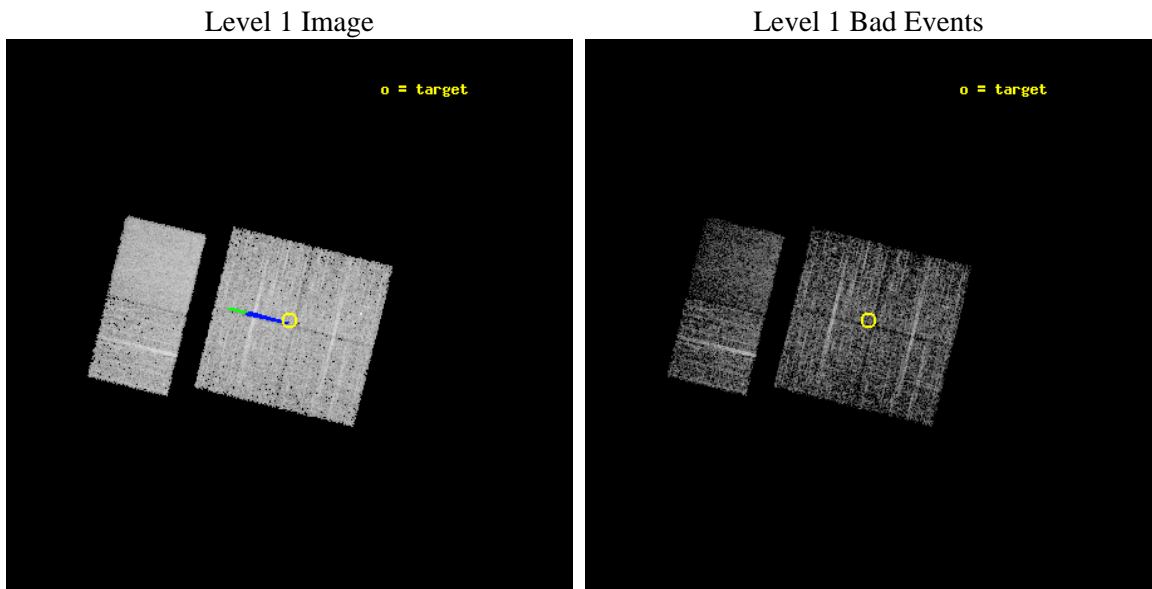
seq_num	900107	Sequence number
obs_id	2280	Observation id
title	CHANDRA SURVEY OF THE GALACTIC RIDGE AROUND THE MILKY WAY CENTER	P
observer	Prof. Q. Daniel Wang	Principal investigator
object	GCS 5	Source name
dtcycle	0	
cycle	P	events from which exps? Prim/Second/Both
ra_targ	266.7516	Observer's specified target RA [deg]
dec_targ	-28.4364	Observer's specified target Dec [deg]
ra_nom	266.75080031617	Nominal RA [deg]
dec_nom	-28.441062453322	Nominal Dec [deg]
roll_nom	283.80731357468	Nominal Roll [deg]
revision	3	Processing version of data
ontime	10556.800009817	Sum of GTIs [s]
livetime	10423.123451551	Livetime [s]
ontime0	10556.800009817	Sum of GTIs [s]
ontime1	10556.800009817	Sum of GTIs [s]
ontime2	10556.800009817	Sum of GTIs [s]
ontime3	10556.800009817	Sum of GTIs [s]
ontime6	10556.800009817	Sum of GTIs [s]
ontime7	10556.800009817	Sum of GTIs [s]
l2events	46158	Number of level 2 events



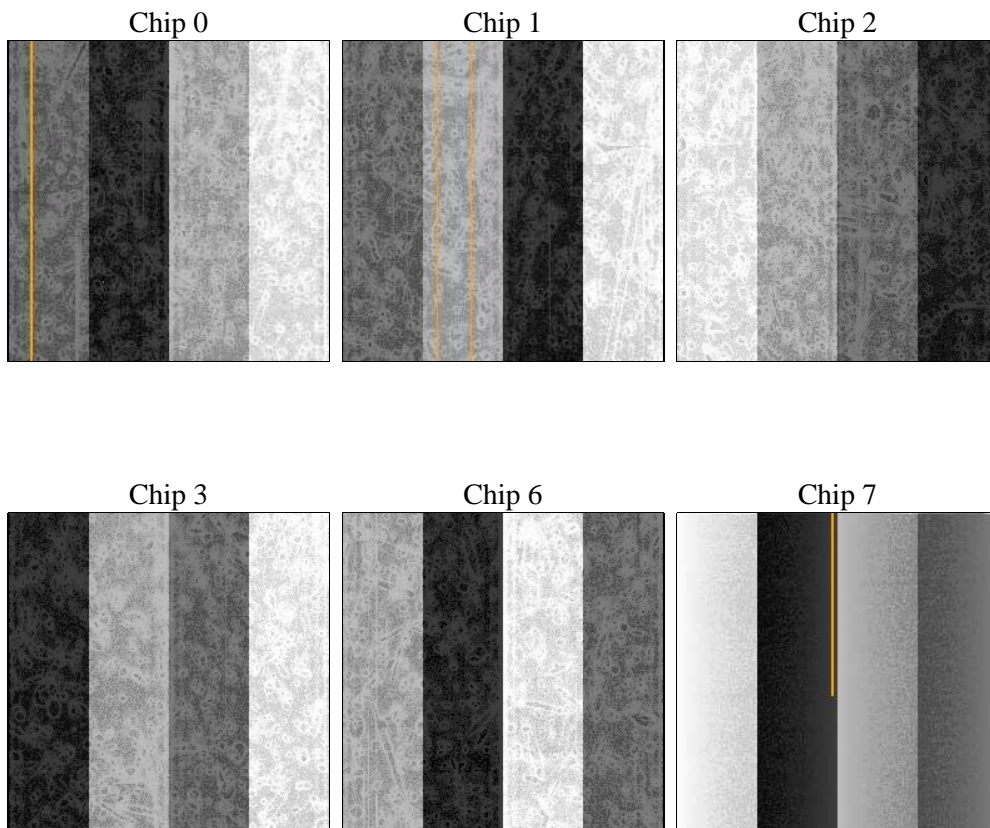
2 OBI

2.1 OBI

2.1.1 Images



2.1.2 Bias



2.1.3 Parameters

obi_num	0	Obi number	sched_exp_time	10800.000000	[s] Scheduled observation exposure time
ascdsver	8.4.5	Processing system revision	ontime	10556.800009817	Sum of GTIs [s]
caldsver	4.5.1.1	 	ontime0	10556.800009817	Sum of GTIs [s]
date	2012-09-20T18:55:54	Date and time of file creation	ontime1	10556.800009817	Sum of GTIs [s]
revision	3	Processing version of data	ontime2	10556.800009817	Sum of GTIs [s]
			ontime3	10556.800009817	Sum of GTIs [s]
			ontime6	10556.800009817	Sum of GTIs [s]
			ontime7	10556.800009817	Sum of GTIs [s]
			l1events	179432	Number of level 1 events

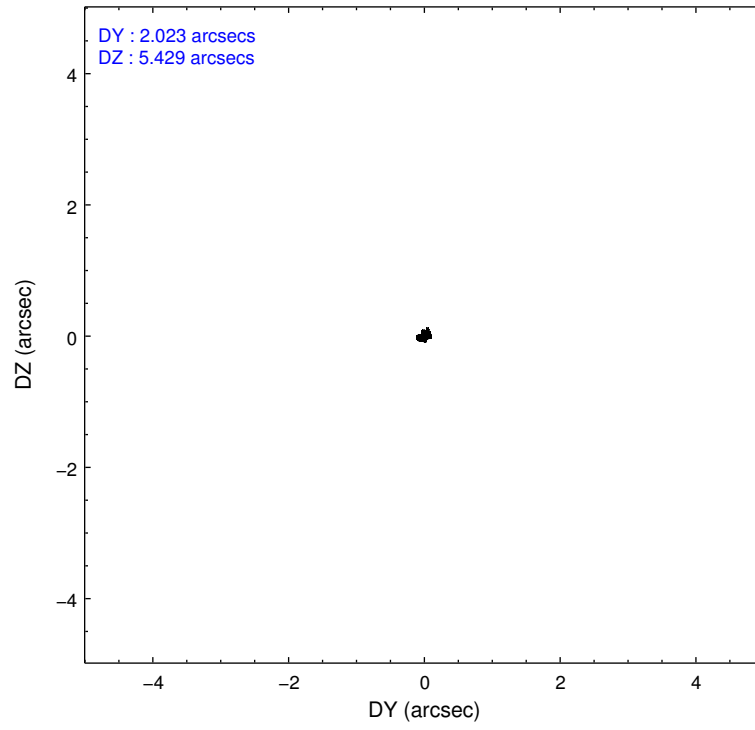
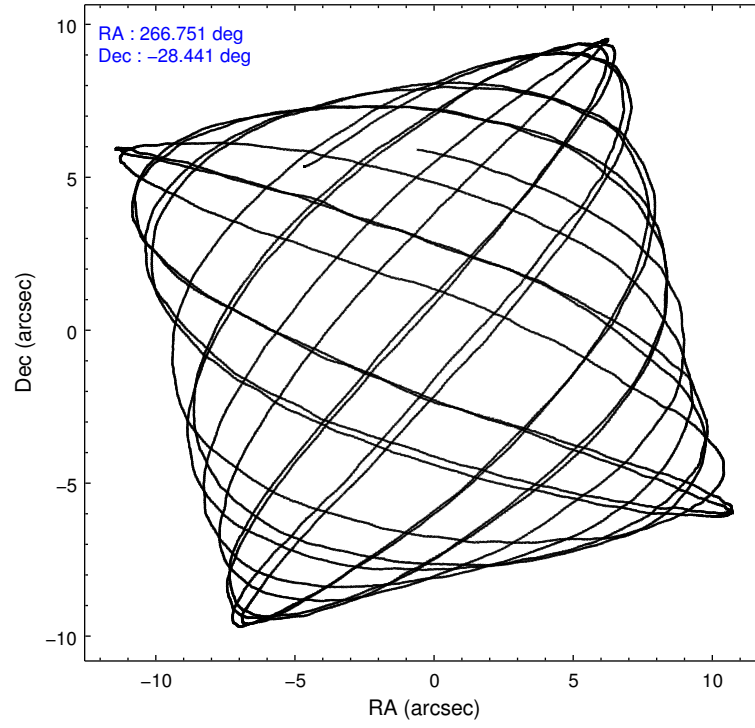
2.1.4 Events

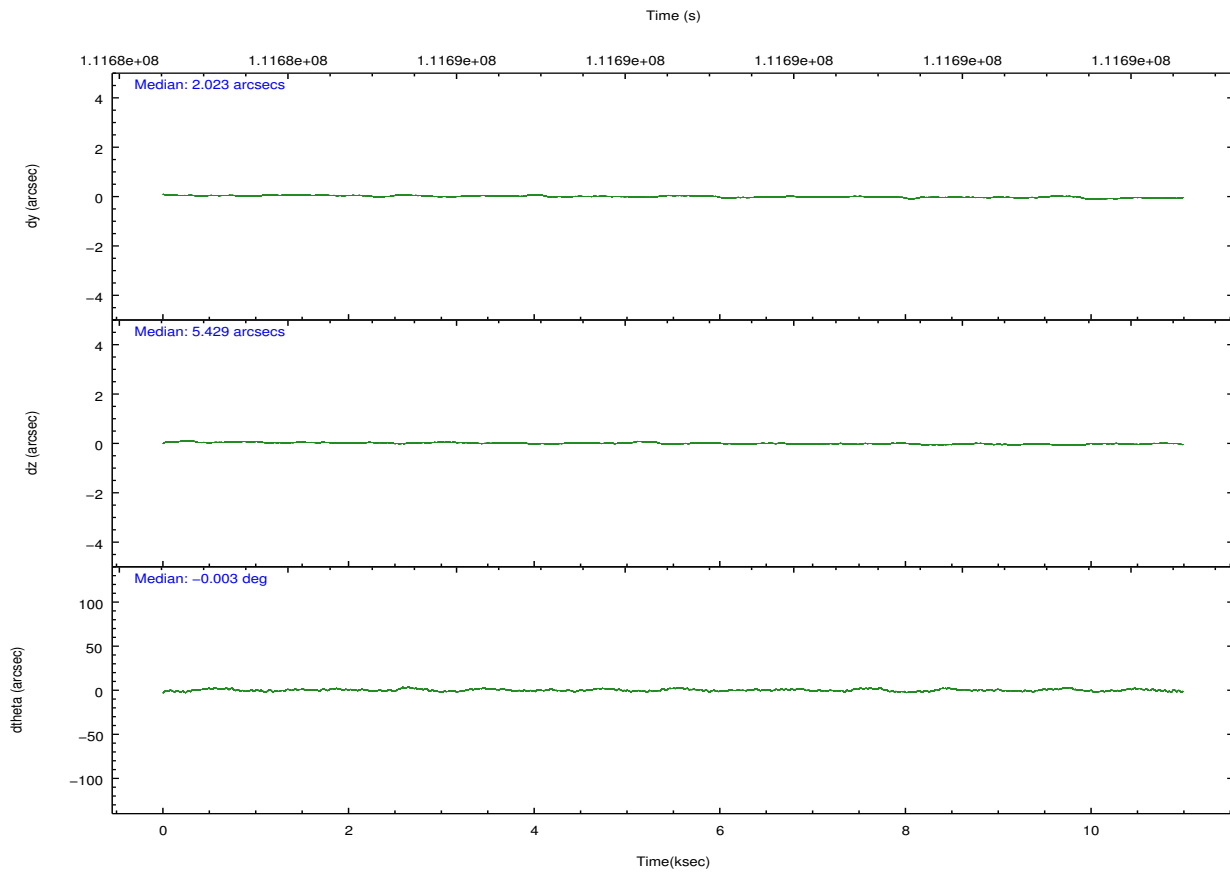
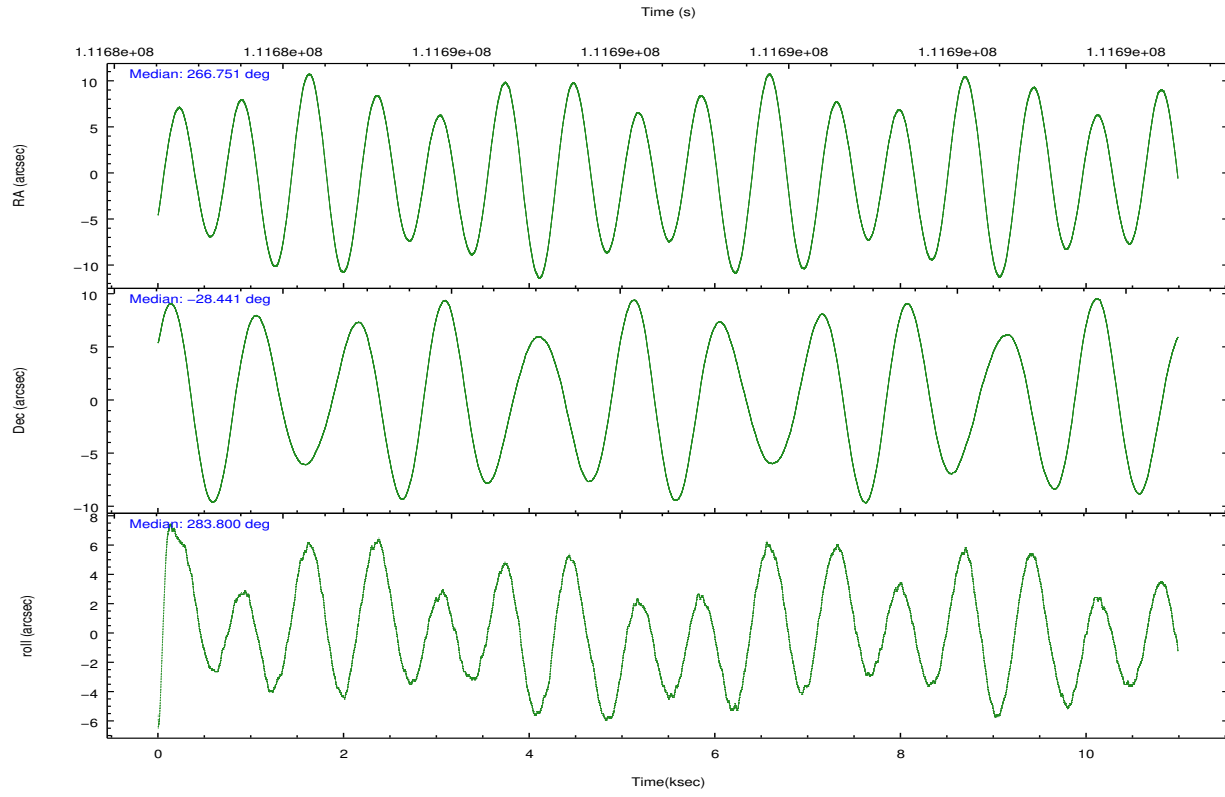
	ccd 0	ccd 1	ccd 2	ccd 3	ccd 6	ccd 7		ccd 0	ccd 1	ccd 2	ccd 3	ccd 6	ccd 7
level 1 events	26657	29177	28711	29509	29350	36028	grade 0 events	3164	3001	3032	2896	2308	1949
rejected events	20490	22897	22755	23586	24186	16302		11%	10%	10%	9%	7%	5%
rejected %	76%	78%	79%	79%	82%	45%	grade 1 events	25	24	33	32	30	41
								0%	0%	0%	0%	0%	0%
							grade 2 events	1174	1207	1132	1156	1015	3995
								4%	4%	3%	3%	3%	11%
							grade 3 events	506	526	458	449	433	1901
								1%	1%	1%	1%	1%	5%
							grade 4 events	435	539	478	478	433	1843
								1%	1%	1%	1%	1%	5%
							grade 5 events	1102	1236	985	1195	1286	4086
								4%	4%	3%	4%	4%	11%
							grade 6 events	890	1009	858	946	977	10043
								3%	3%	2%	3%	3%	27%
							grade 7 events	19361	21635	21735	22357	22868	12170
								72%	74%	75%	75%	77%	33%

2.2 Compared Parameters

Parameter	Planned	Actual	Parameter	Planned	Actual
Instrument	ACIS	ACIS	Obspar format version number	7	7
Detector	ACIS-012367	ACIS-012367	Obspar file type	PREDICTED	ACTUAL
Grating	NONE	NONE	Obspar update status	NONE	UPDATED
Data mode	FAINT	FAINT	Number of optional ACIS chips dropped	0	0
Observation mode	POINTING	POINTING	On-chip summing requested	N	N
[deg] Pointing RA	266.729120	266.7508003161685	Subarray requested	NONE	NONE
[deg] Pointing Dec	-28.421284	-28.4410624533216	Alternating exposures requested	N	N
[deg] Pointing Roll	283.588302	283.8073135746835	[s] Primary exposure time	0.000000	3.2
[deg] Roll angle	283.600000	283.600000			
[deg] Roll tolerance	2.000000	2.000000			
Roll constraint allows 180D rotation	N	N			
[mm] SIM focus pos	-0.782348	-0.7809083437167272			
[mm] SIM defocus	0	0.001439871863259334			
[mm] SIM translation stage pos	-233.592463	-233.5874344608287			
[mm] SIM translation stage offset	0	-0.005018542100998502			
[s] Observation start time (MET)	111683262.184000	111682885.65946			
Observation start date	2001-07-16T15:06:38	2001-07-16T15:01:25			
[s] Observation end time (MET)	111694062.184000	111694195.5099			
Observation end date	2001-07-16T18:06:38	2001-07-16T18:09:55			
Read mode	TIMED	TIMED			

2.3 Aspect



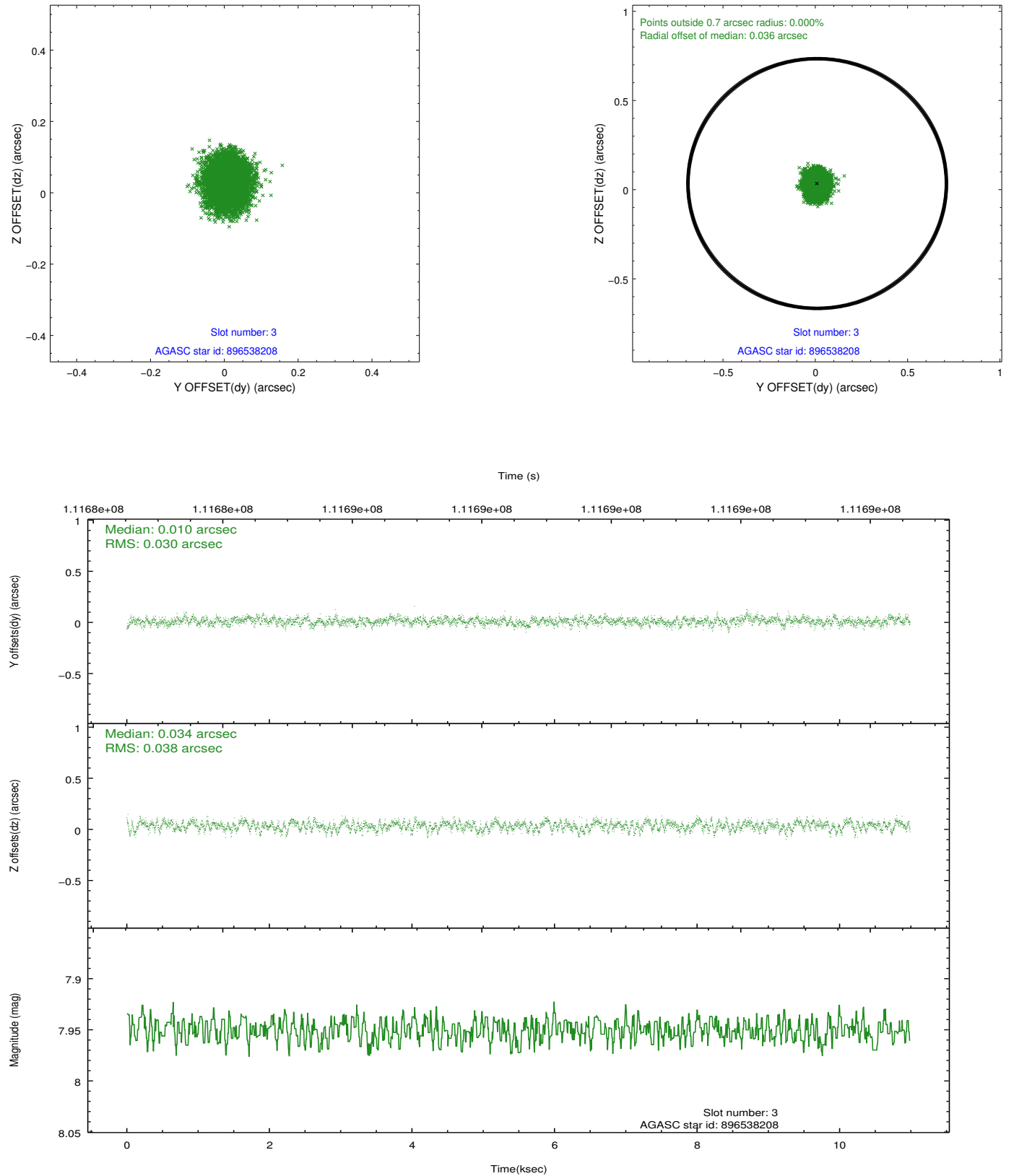


Slot Statistics

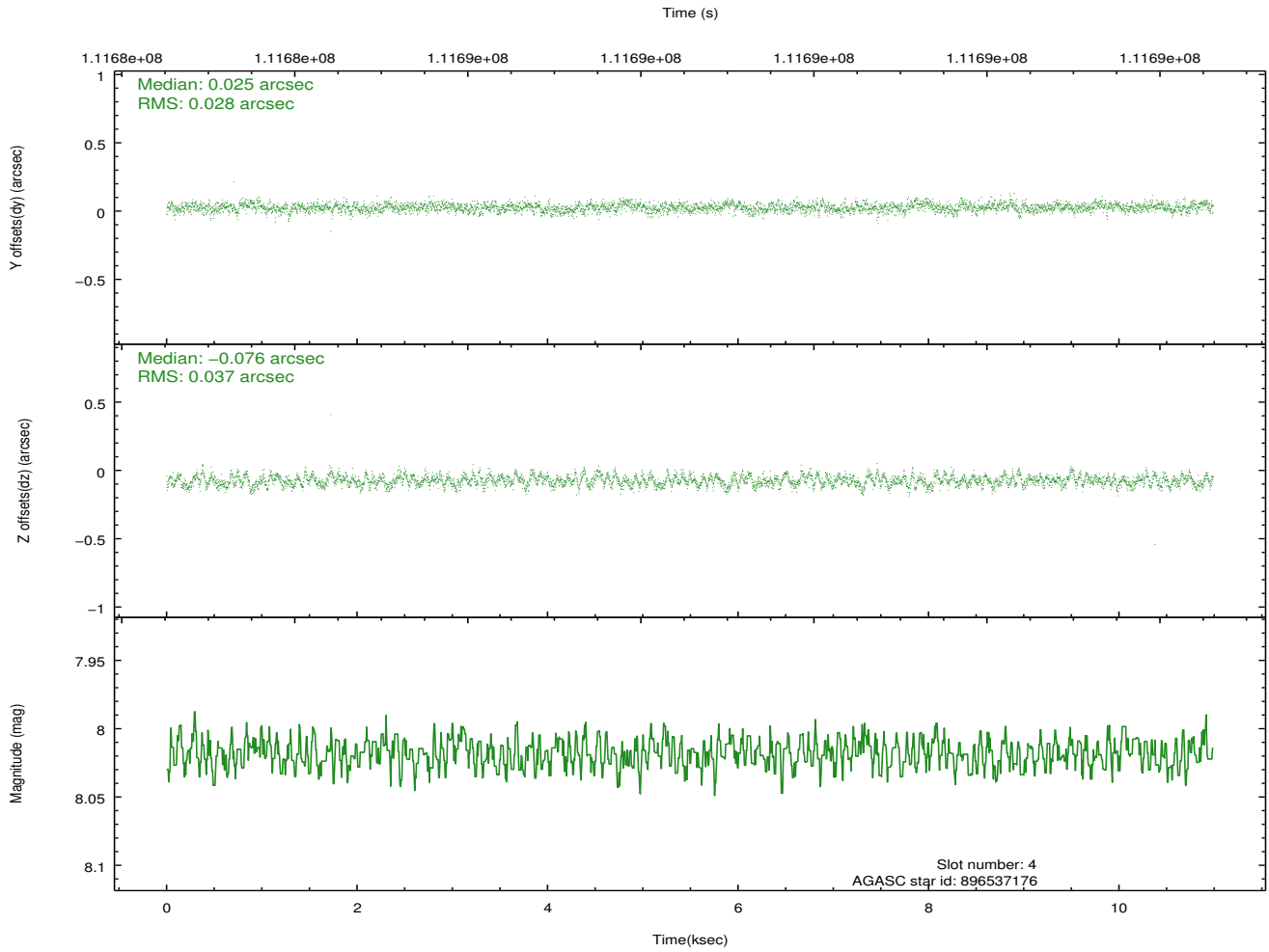
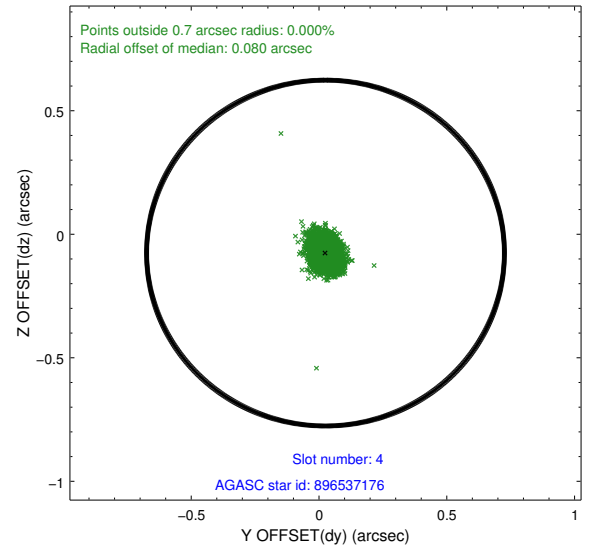
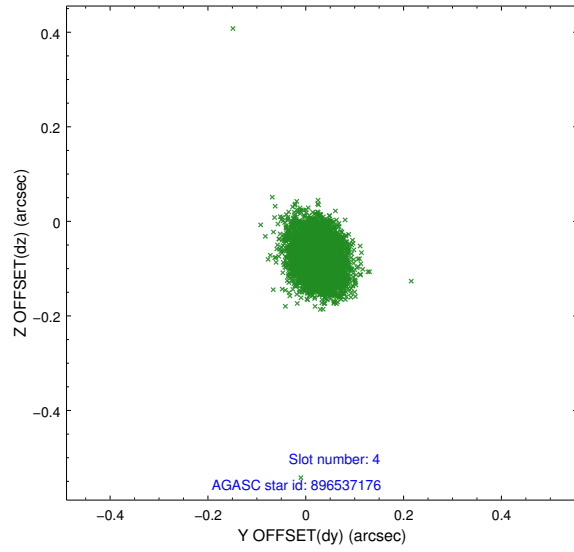
slot	status	id	mag	n_pts	med_dy	med_dz	dr1	dr2	ra	dec	mean_y	mean_z
0	FID	ACIS-I-2	7.15	2680	-0.036	-0.049	0.025	0.038	0.000000	0.000000	-756.40	-835.20
1	FID	ACIS-I-4	7.19	2679	-0.007	0.040	0.012	0.019	0.000000	0.000000	2157.46	1070.85
2	FID	ACIS-I-5	7.23	2680	-0.059	0.076	0.020	0.033	0.000000	0.000000	-1809.66	1069.24
3	GUIDE	896538208	7.95	5361	0.010	0.034	0.052	0.084	267.176969	-28.671626	1211.97	1162.69
4	GUIDE	896537176	8.02	5361	0.025	-0.076	0.048	0.080	266.498272	-28.678259	730.16	-926.11
5	GUIDE	896011040	7.71	5361	-0.049	0.089	0.047	0.077	267.058469	-28.014759	-1174.14	1360.59
6	GUIDE	896535464	9.33	5345	-0.020	-0.059	0.083	0.134	266.962550	-28.408631	130.92	729.10
7	GUIDE	896538248	8.89	5356	0.035	0.012	0.072	0.120	266.238138	-28.240101	-995.35	-1361.18

2.4 Star Slots

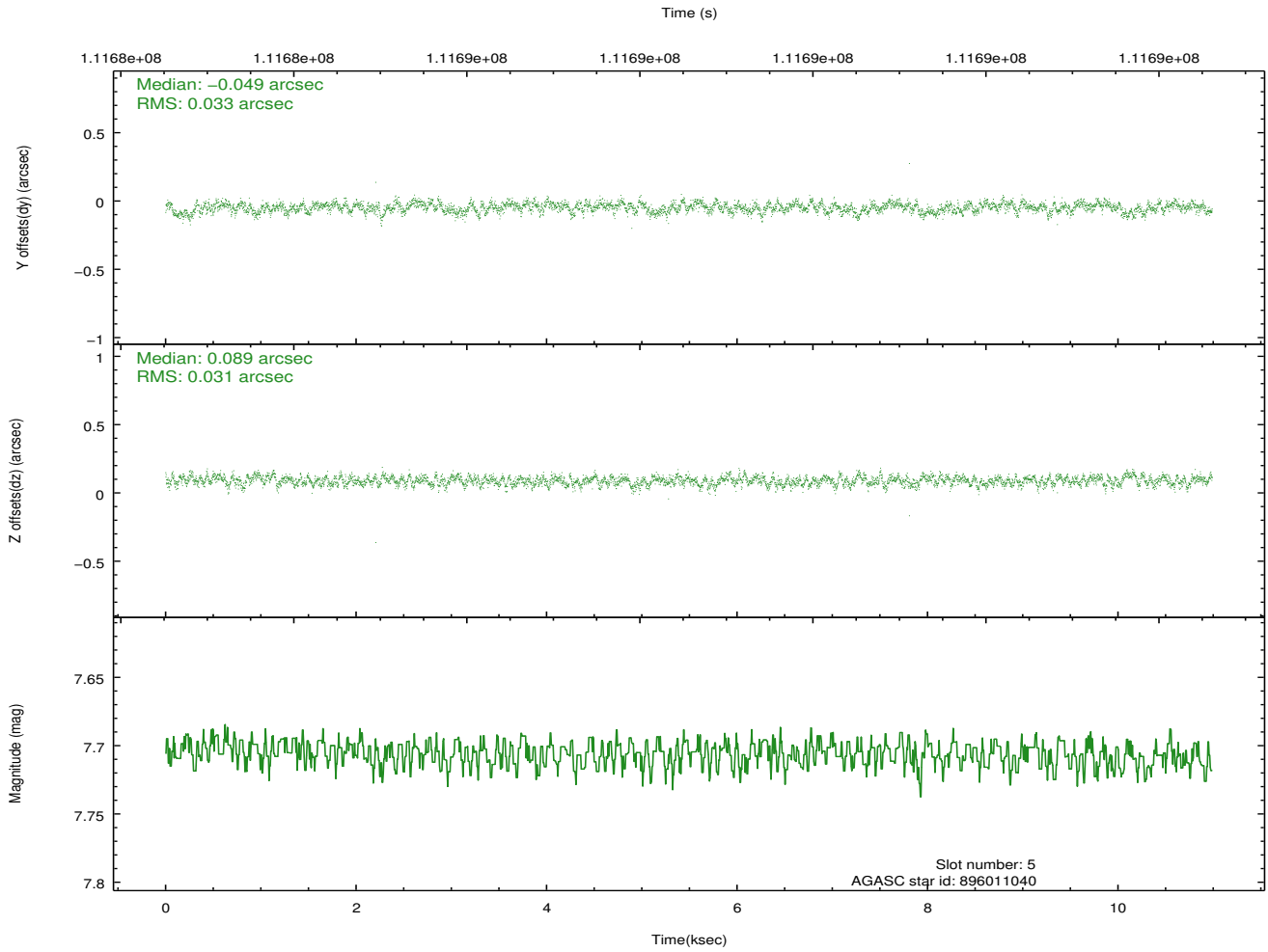
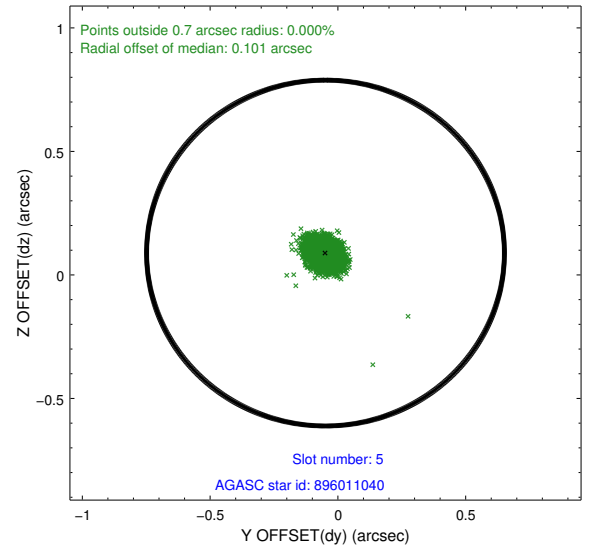
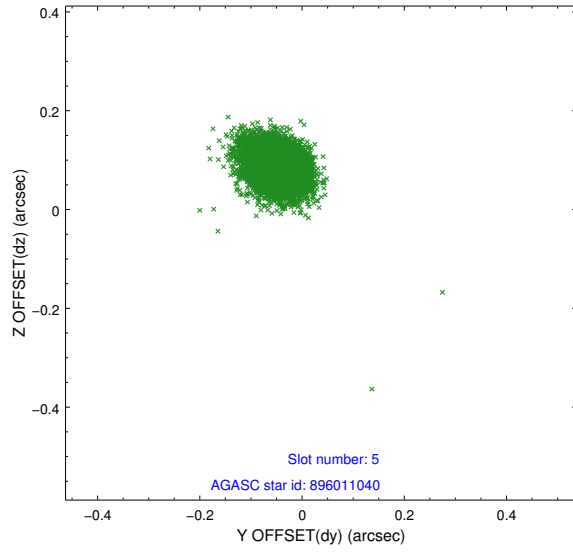
2.4.1 Slot 3



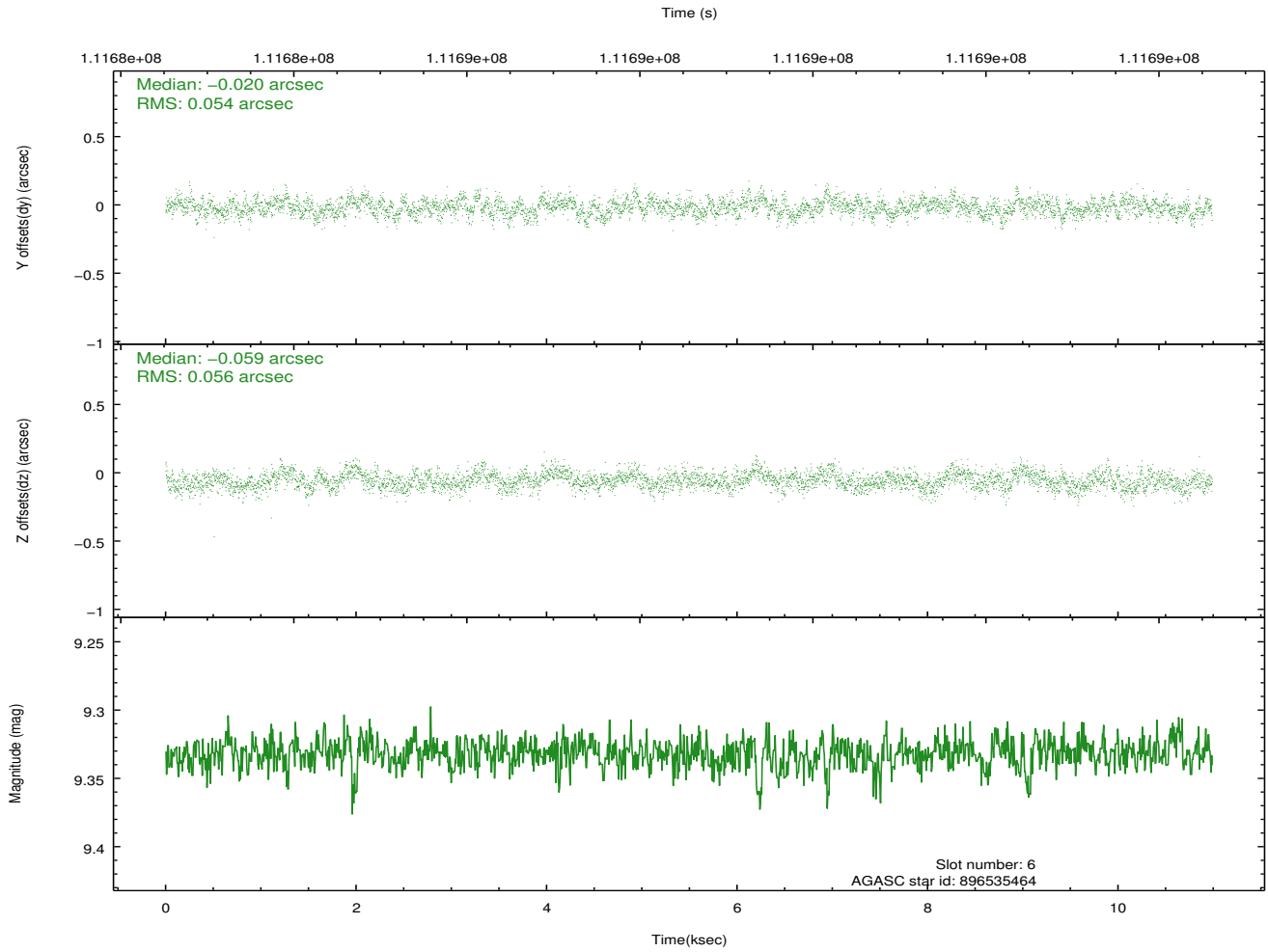
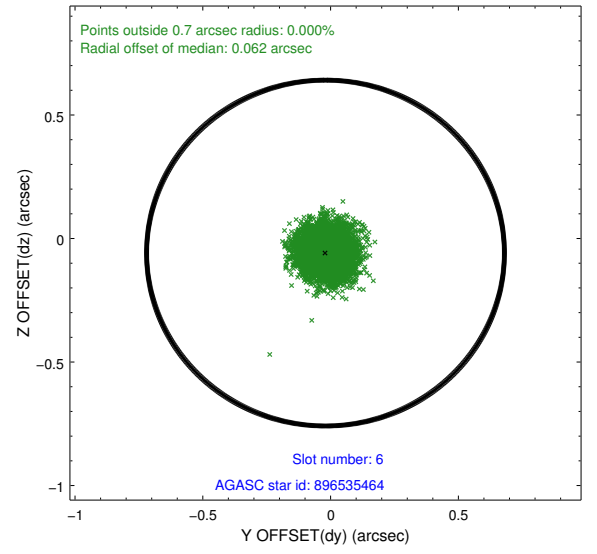
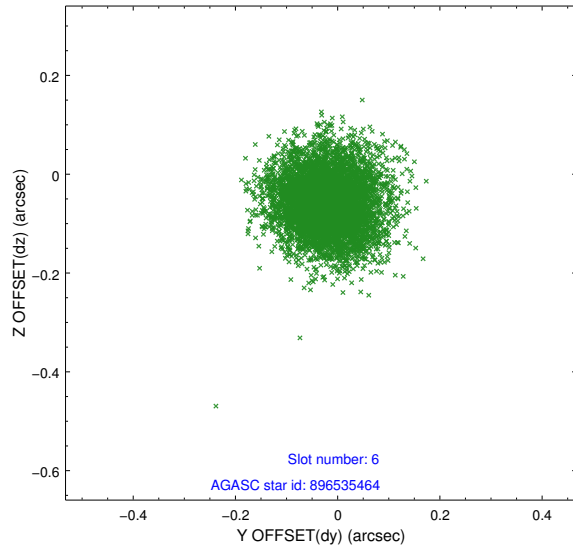
2.4.2 Slot 4



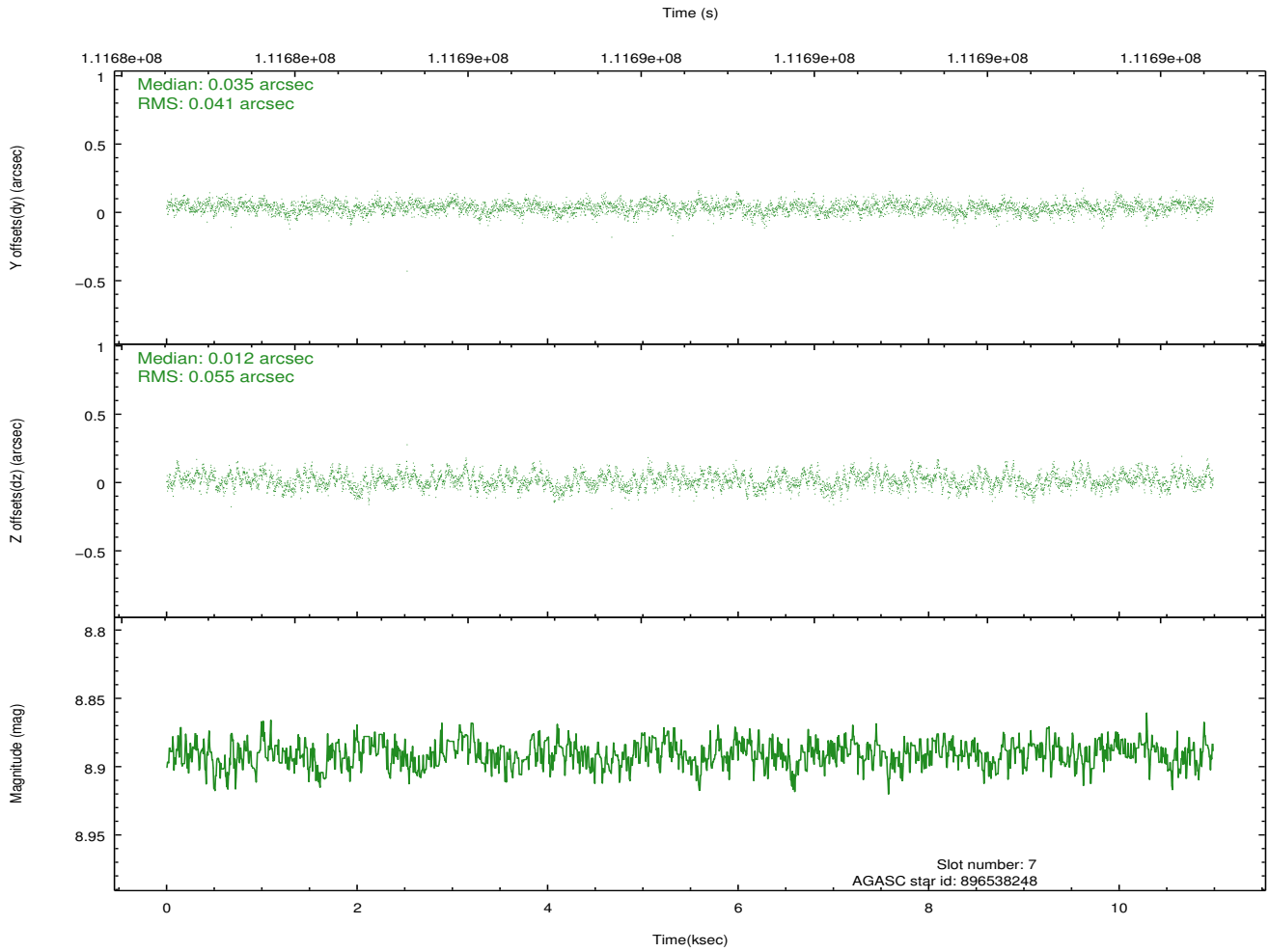
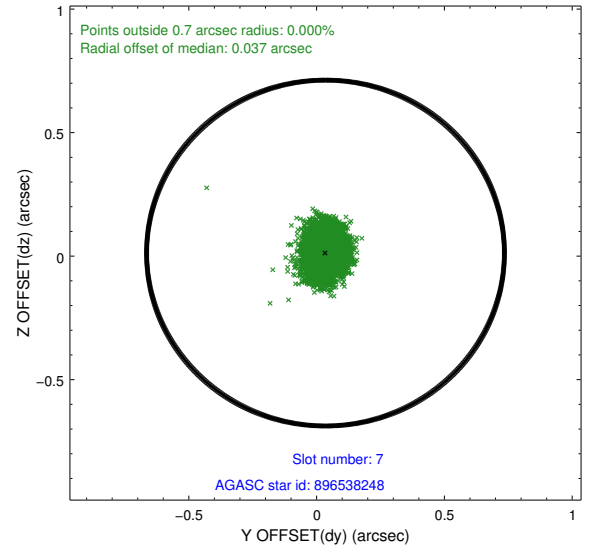
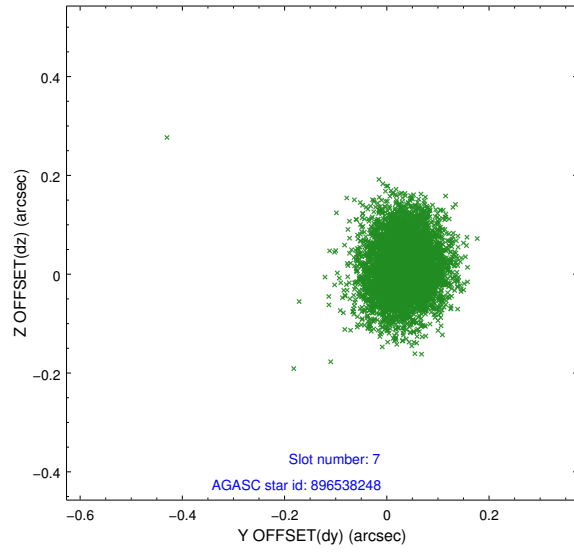
2.4.3 Slot 5



2.4.4 Slot 6

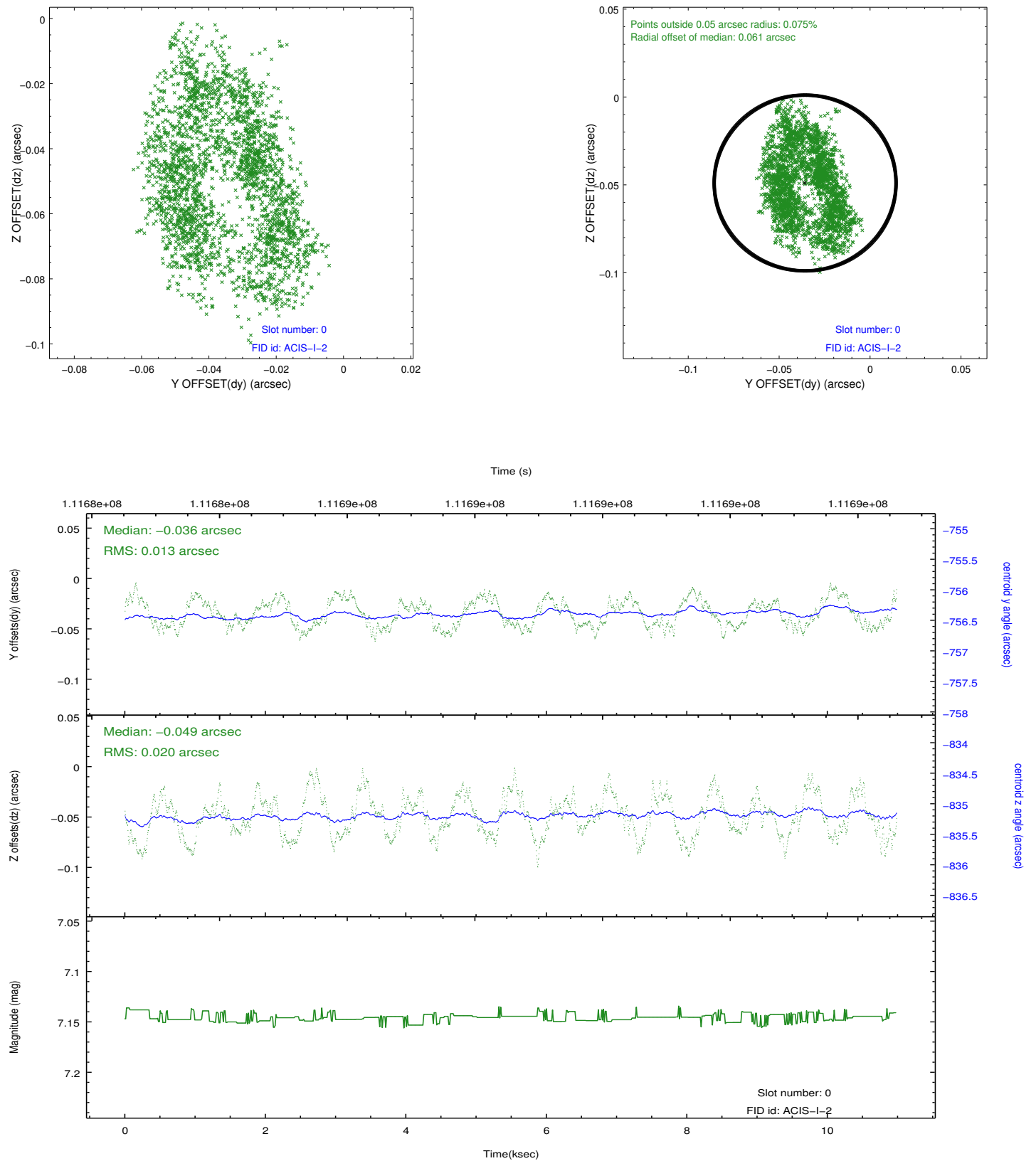


2.4.5 Slot 7

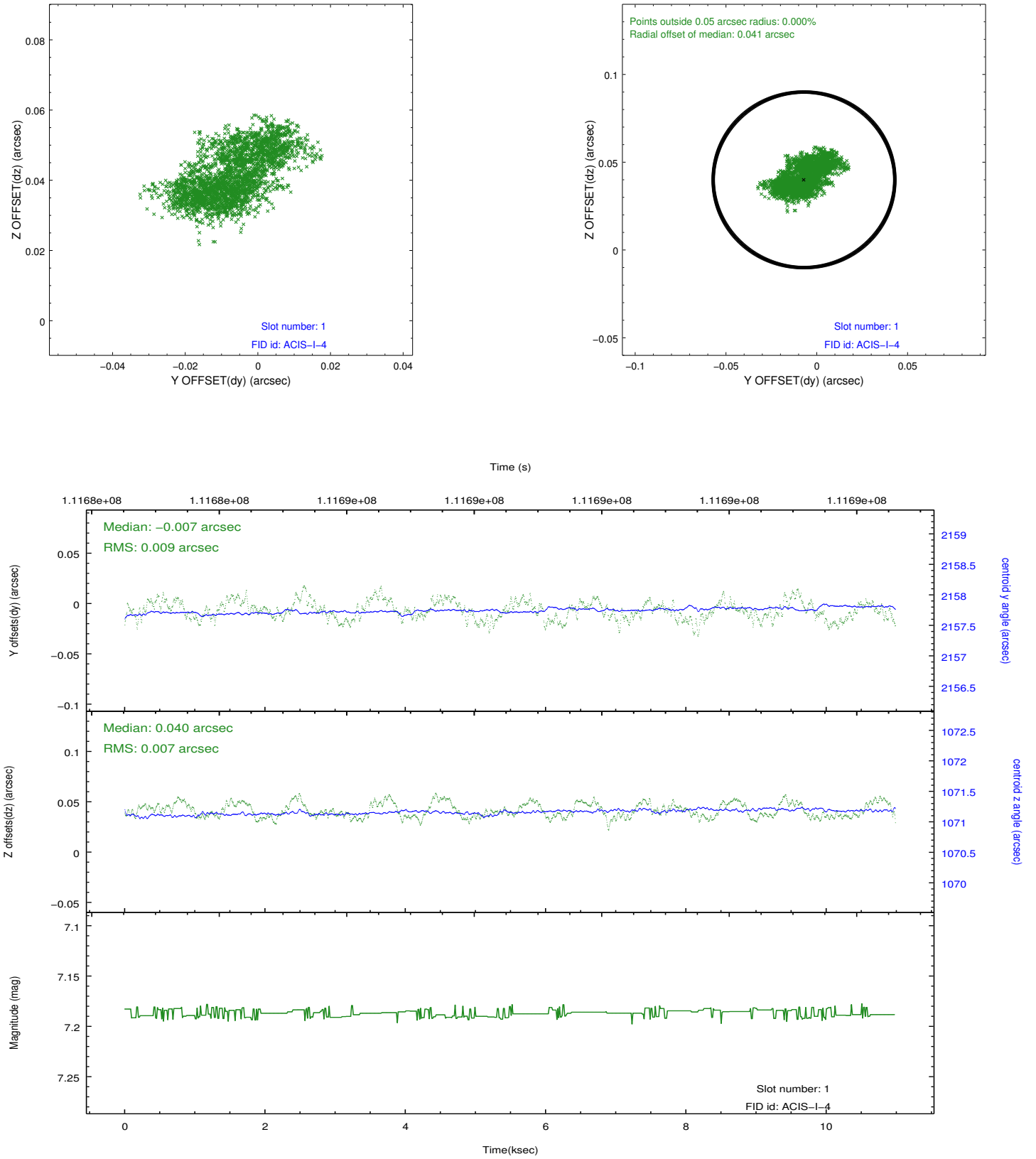


2.5 FID Slots

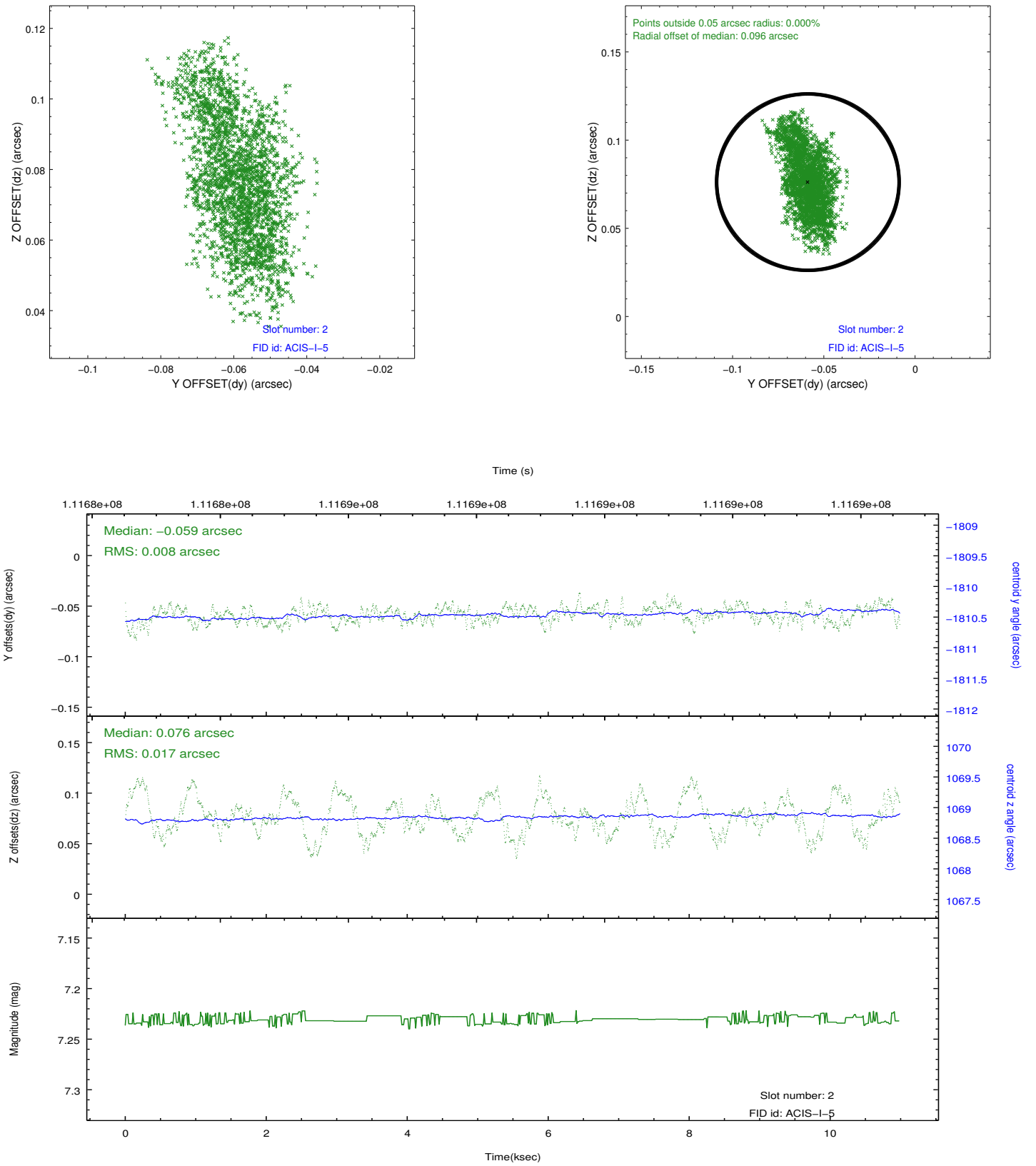
2.5.1 Slot 0



2.5.2 Slot 1



2.5.3 Slot 2



A Summary

A.1 Status

V&V Scientist	Jen Lauer
V&V Date (YYYY-MM-DD)	2012.09.24
V&V Edition	1
V&V Disposition and Status	OK
V&V Charge Time	10.6

A.2 Comments

Charge time for this ObsId remains at previous value of 10.6 ks although with the current processing the charge time would have been 10.56 ksec.
Roll constraint met.