

# V&V Reference Report

## L2 ASCDS Version : 7.6.9

Observation 2280 - L2 Version 001  
Chandra X-Ray Center

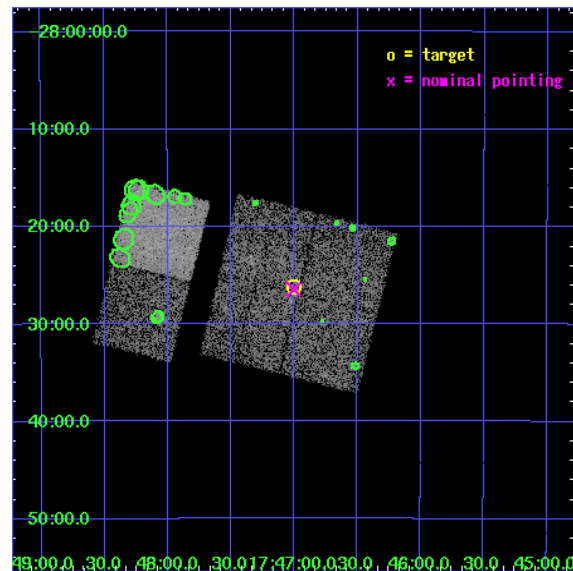
L2 Processing Date : Dec 14 2006

## Contents

<b>1</b>	<b>Front</b>	<b>2</b>
<b>2</b>	<b>OBI</b>	<b>3</b>
2.1	OBI . . . . .	3
2.1.1	Images . . . . .	3
2.1.2	Bias . . . . .	3
2.1.3	Parameters . . . . .	4
2.1.4	Events . . . . .	4
2.2	Compared Parameters . . . . .	5
2.3	Aspect . . . . .	6
2.4	Star Slots . . . . .	9
2.4.1	Slot 3 . . . . .	9
2.4.2	Slot 4 . . . . .	10
2.4.3	Slot 5 . . . . .	11
2.4.4	Slot 6 . . . . .	12
2.4.5	Slot 7 . . . . .	13
2.5	FID Slots . . . . .	14
2.5.1	Slot 0 . . . . .	14
2.5.2	Slot 1 . . . . .	15
2.5.3	Slot 2 . . . . .	16
<b>3</b>	<b>Point Sources</b>	<b>17</b>
<b>A</b>	<b>Summary</b>	<b>18</b>
A.1	Status . . . . .	18
A.2	Comments . . . . .	18

# 1 Front

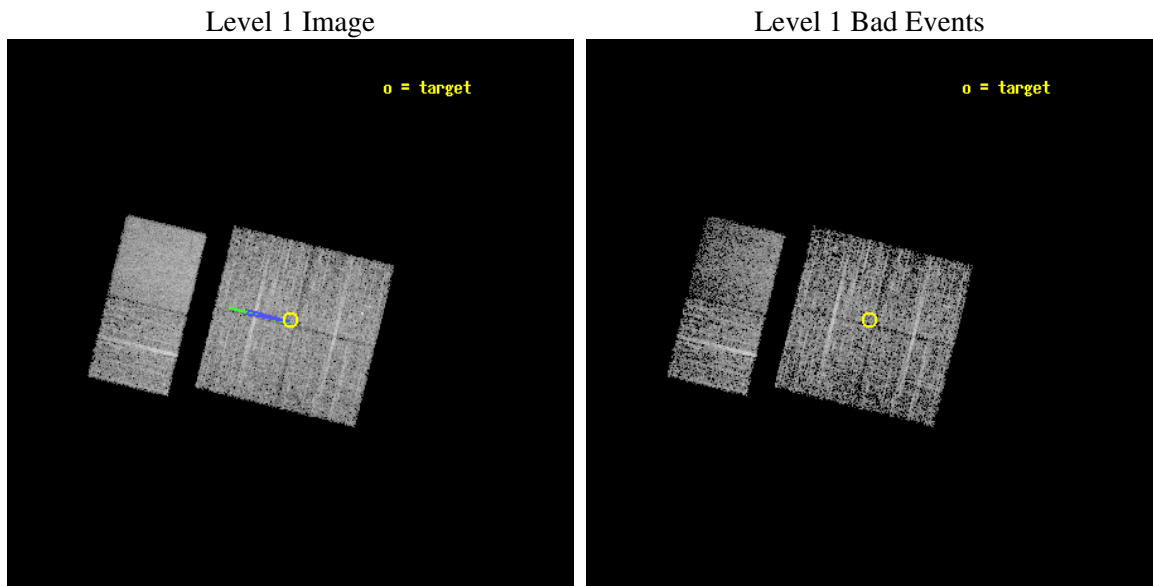
seq_num	900107
obs_id	2280
title	CHANDRA SURVEY OF THE GALACTIC RIDGE AROUND THE MILKY WAY CENTER
observer	Prof. Q. Daniel Wang
object	GCS 5
dtcycle	0
cycle	P
ra_targ	266.7516
dec_targ	-28.4364
ra_nom	266.75080031617
dec_nom	-28.441062453322
roll_nom	283.80731357468
revision	2
ontime	10556.800009832
livetime	10423.123451565
ontime0	10556.800009832
ontime1	10556.800009832
ontime2	10556.800009832
ontime3	10556.800009832
ontime6	10556.800009832
ontime7	10556.800009832
l2events	44937



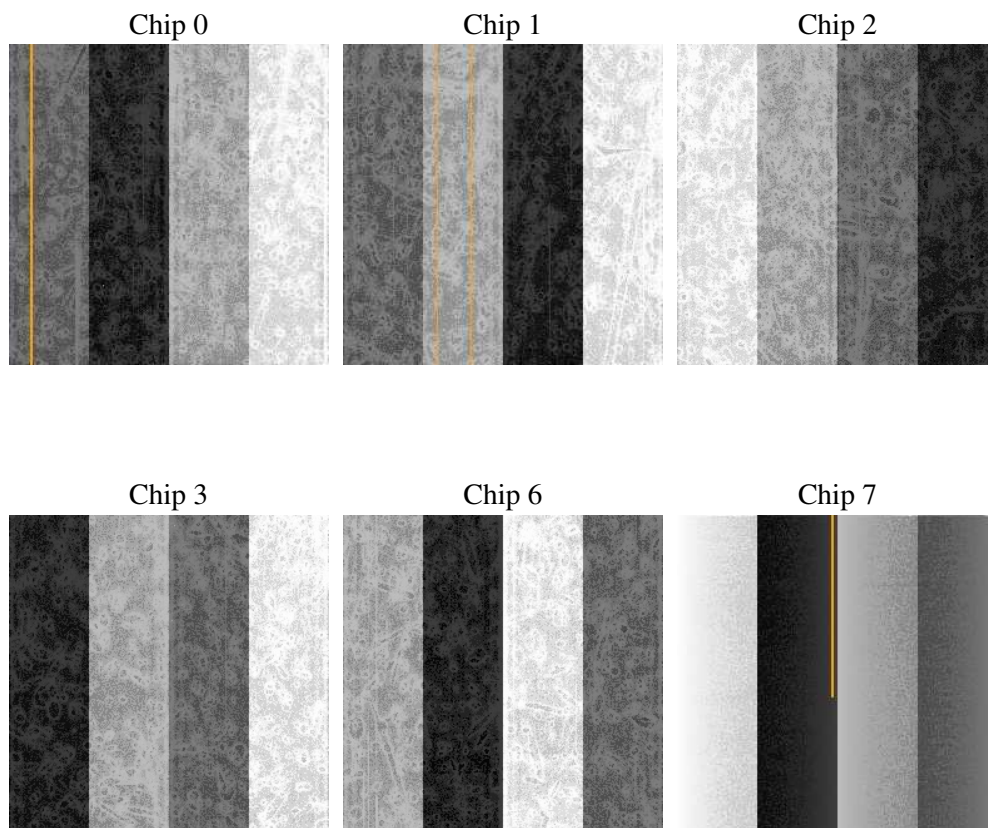
## 2 OBI

### 2.1 OBI

#### 2.1.1 Images



#### 2.1.2 Bias



### 2.1.3 Parameters

obi_num	0
ascdsver	7.6.9
caldbver	3.2.4
date	2006-12-14T09:12:29
revision	2

sched_exp_time	10800.000000
ontime	10562.439762935
ontime0	10562.439762935
ontime1	10562.439762935
ontime2	10562.439762935
ontime3	10562.439762935
ontime6	10562.439762935
ontime7	10562.439782873
l1events	179432

### 2.1.4 Events

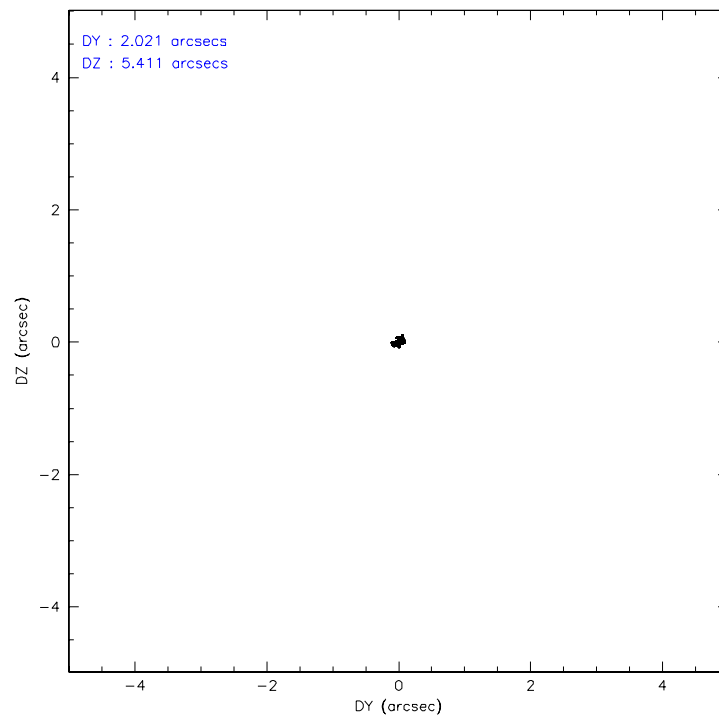
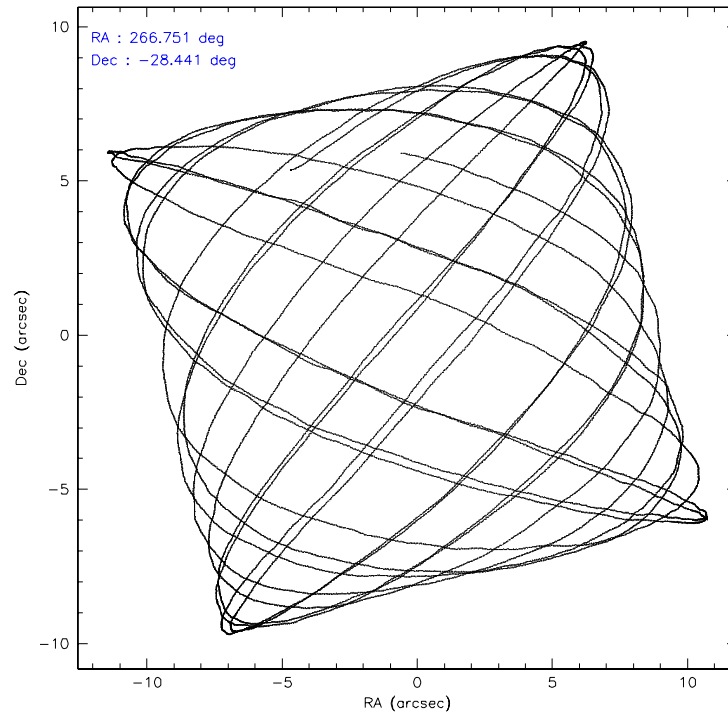
	ccd 0	ccd 1	ccd 2	ccd 3	ccd 6	ccd 7
level 1 events	26657	29177	28711	29509	29350	36028
rejected events	20489	22897	22756	23587	24187	17551
rejected %	76%	78%	79%	79%	82%	48%

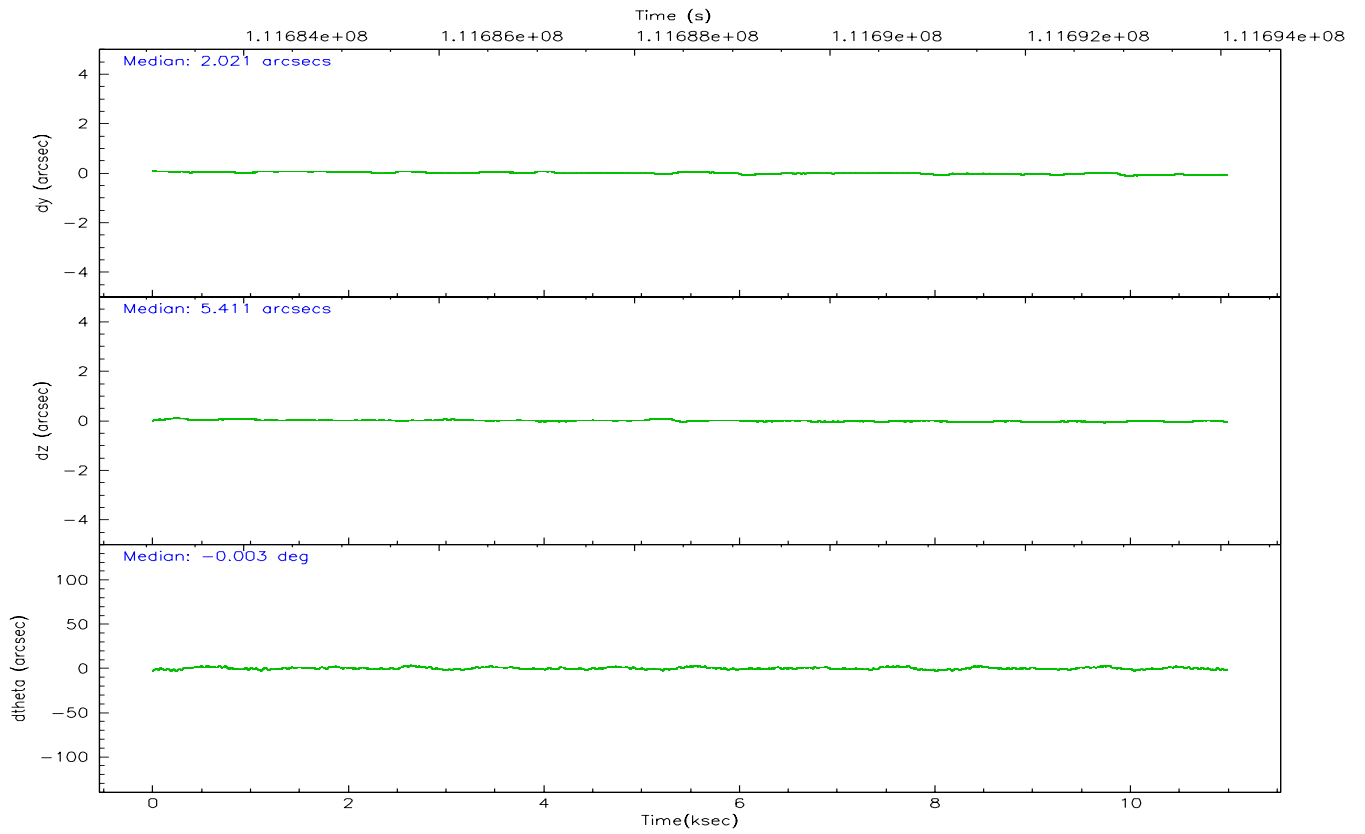
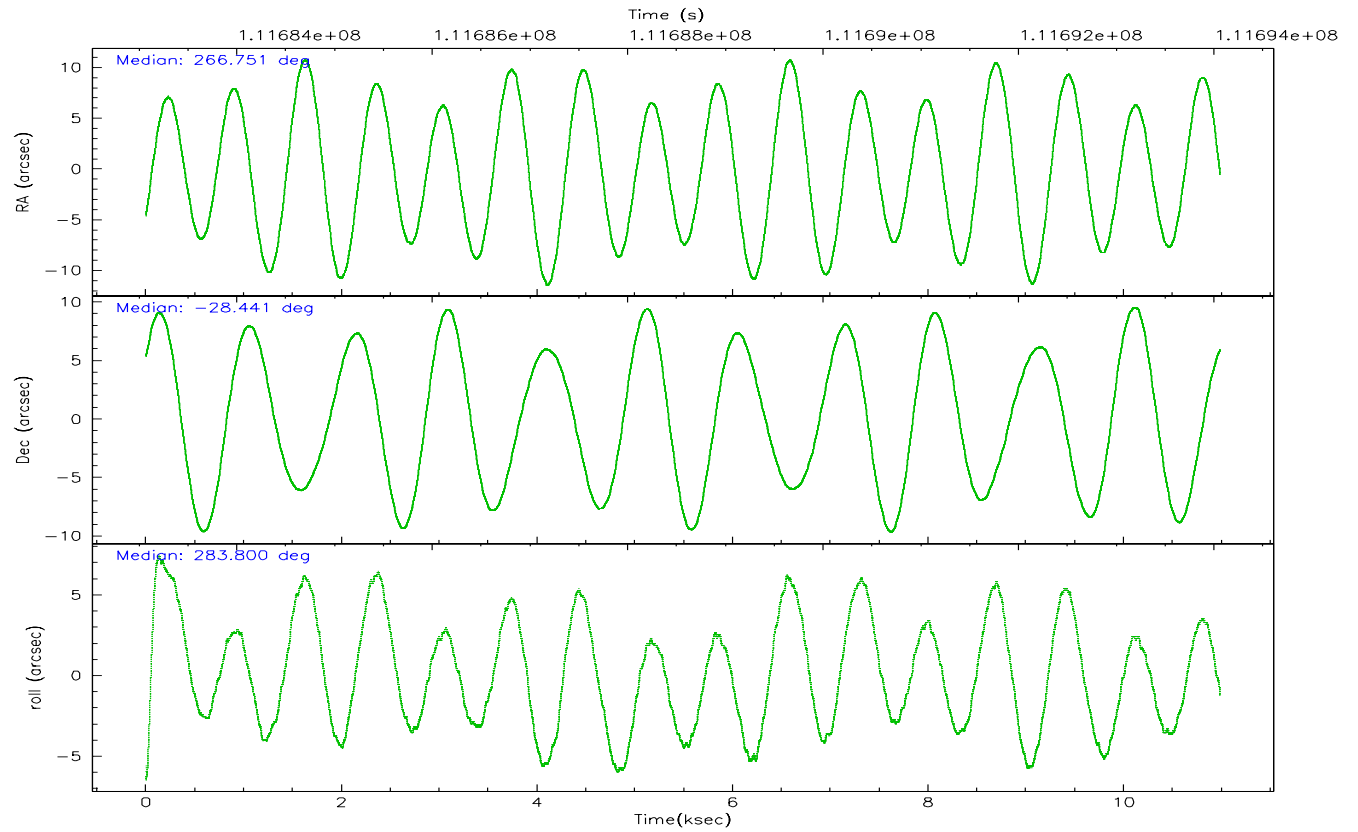
	ccd 0	ccd 1	ccd 2	ccd 3	ccd 6	ccd 7
grade 0 events	3164	3001	3032	2896	2308	1218
	11%	10%	10%	9%	7%	3%
grade 1 events	25	24	33	32	30	30
	0%	0%	0%	0%	0%	0%
grade 2 events	1174	1207	1132	1156	1015	4583
	4%	4%	3%	3%	3%	12%
grade 3 events	506	526	458	449	433	1099
	1%	1%	1%	1%	1%	3%
grade 4 events	435	539	478	478	433	1013
	1%	1%	1%	1%	1%	2%
grade 5 events	1102	1236	985	1195	1286	3206
	4%	4%	3%	4%	4%	8%
grade 6 events	890	1009	858	946	977	10576
	3%	3%	2%	3%	3%	29%
grade 7 events	19361	21635	21735	22357	22868	14303
	72%	74%	75%	75%	77%	39%

## 2.2 Compared Parameters

Parameter	Planned	Actual	Parameter	Planned	Actual
Instrument	ACIS	ACIS	Obspar format version number	6	6
Detector	ACIS-012367	ACIS-012367	Obspar file type	PREDICTED	ACTUAL
Grating	NONE	NONE	Obspar update status	NONE	UPDATED
Data mode	FAINT	FAINT	Number of optional ACIS chips dropped	0	0
Observation mode	POINTING	POINTING	On-chip summing requested	N	N
Pointing RA	266.729120	266.7508003161686	Subarray requested	NONE	NONE
Pointing Dec	-28.421284	-28.44106245332159	Alternating exposures requested	N	N
Pointing Roll	283.588302	283.8073135746835	Primary exposure time	0.000000	3.2
Roll angle	283.600000	283.600000			
Roll tolerance	2.000000	2.000000			
Roll constraint allows 180D rotation	N	N			
SIM focus pos (mm)	-0.782348	-0.7809083437167272			
SIM defocus (mm)	0	0.001439871863259334			
SIM translation stage pos (mm)	-233.592463	-233.5874344608287			
SIM translation stage offset (mm)	0	-0.005018542100998502			
Observation start time	111683262.184000	111682885.65946			
Observation start date	2001-07-16T15:06:38	2001-07-16T15:01:25			
Observation end time	111694062.184000	111694195.5099			
Observation end date	2001-07-16T18:06:38	2001-07-16T18:09:55			
Read mode	TIMED	TIMED			

## 2.3 Aspect





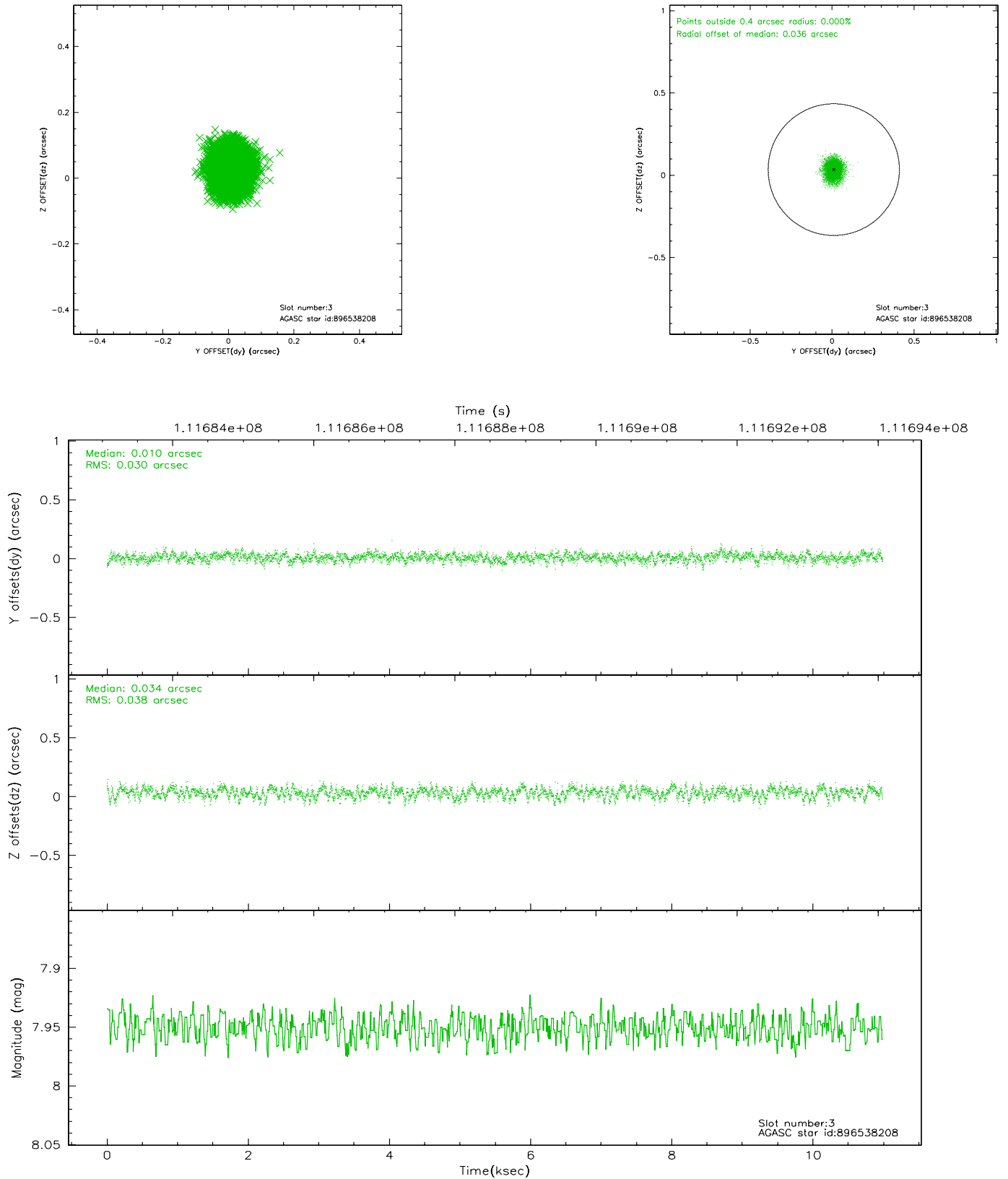
### Slot Statistics

slot	status	id	mag	n_pts	med_dy	med_dz	dr1	dr2	ra	dec	mean_y	mean_z
0	FID	ACIS-I-2	7.15	2680	-0.024	-0.025	0.025	0.038	0.000000	0.000000	-756.39	-835.16
1	FID	ACIS-I-4	7.19	2679	-0.049	0.029	0.012	0.018	0.000000	0.000000	2157.42	1070.85
2	FID	ACIS-I-5	7.23	2680	-0.028	0.065	0.020	0.033	0.000000	0.000000	-1809.63	1069.25
3	GUIDE	896538208	7.95	5361	0.010	0.034	0.052	0.084	267.176969	-28.671626	1211.97	1162.69
4	GUIDE	896537176	8.02	5361	0.025	-0.076	0.048	0.080	266.498272	-28.678259	730.16	-926.11
5	GUIDE	896011040	7.71	5361	-0.049	0.089	0.047	0.077	267.058469	-28.014759	-1174.14	1360.59
6	GUIDE	896535464	9.33	5345	-0.020	-0.059	0.083	0.134	266.962550	-28.408631	130.92	729.10
7	GUIDE	896538248	8.89	5356	0.035	0.012	0.072	0.120	266.238138	-28.240101	-995.35	-1361.18

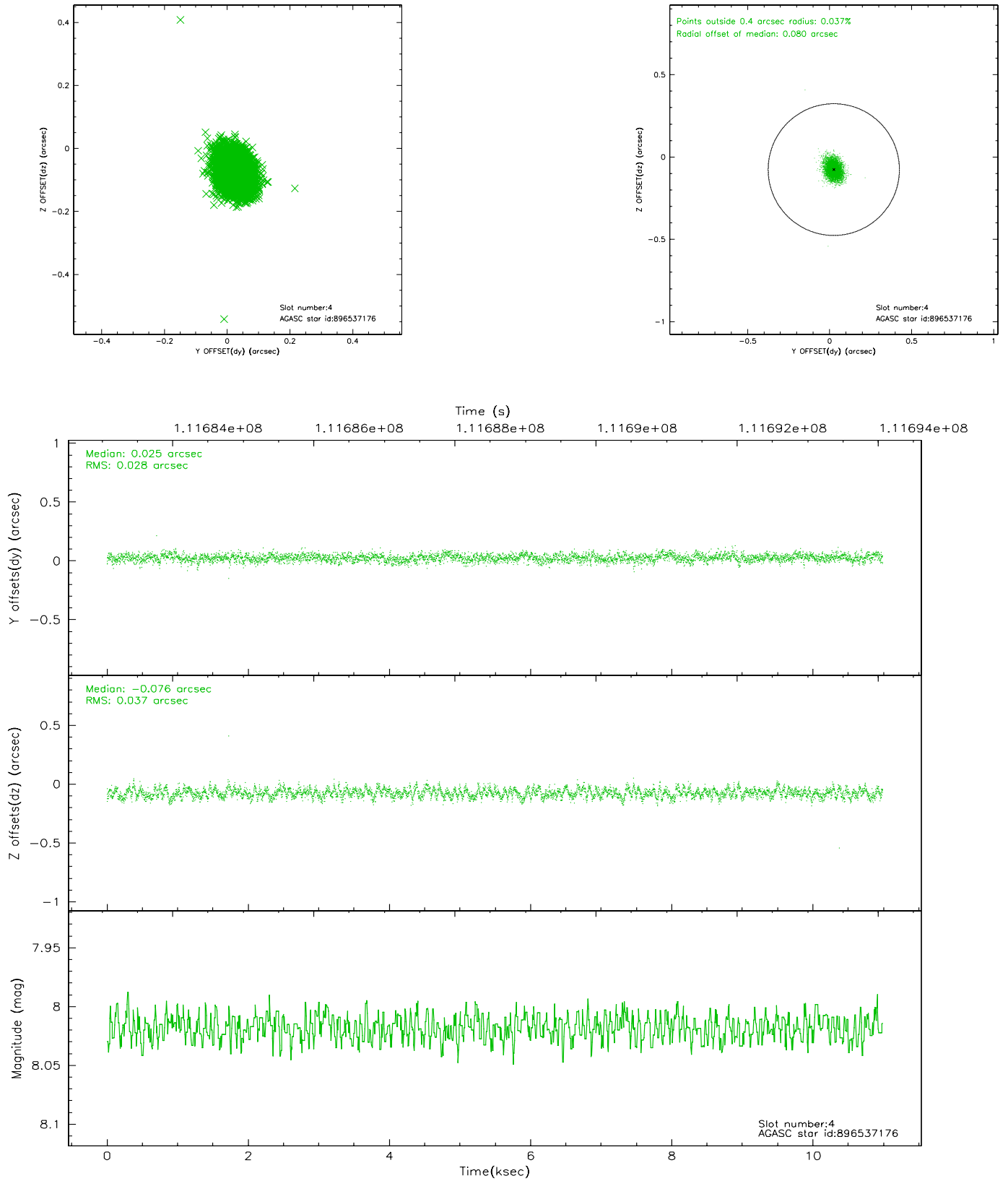


## 2.4 Star Slots

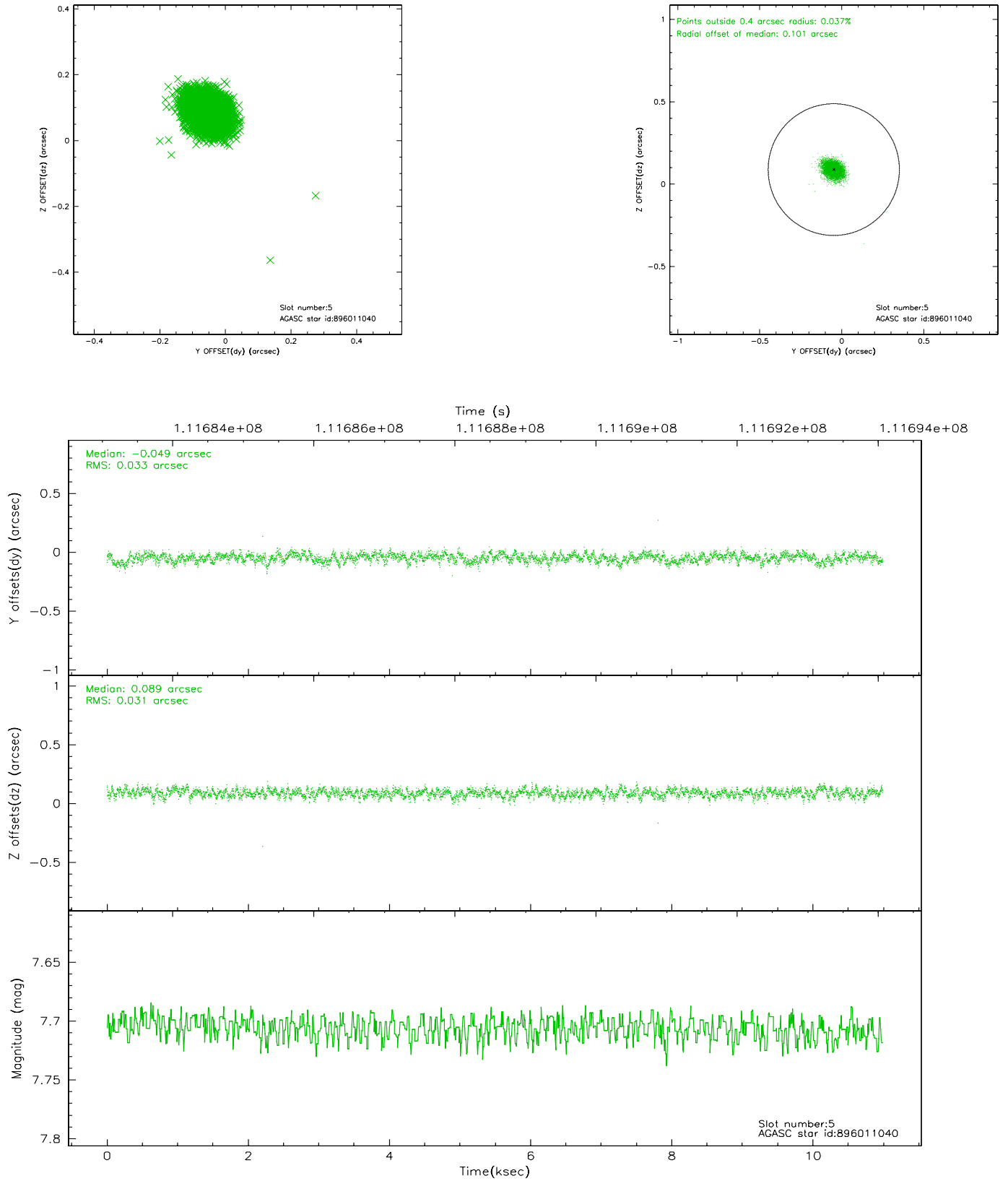
### 2.4.1 Slot 3



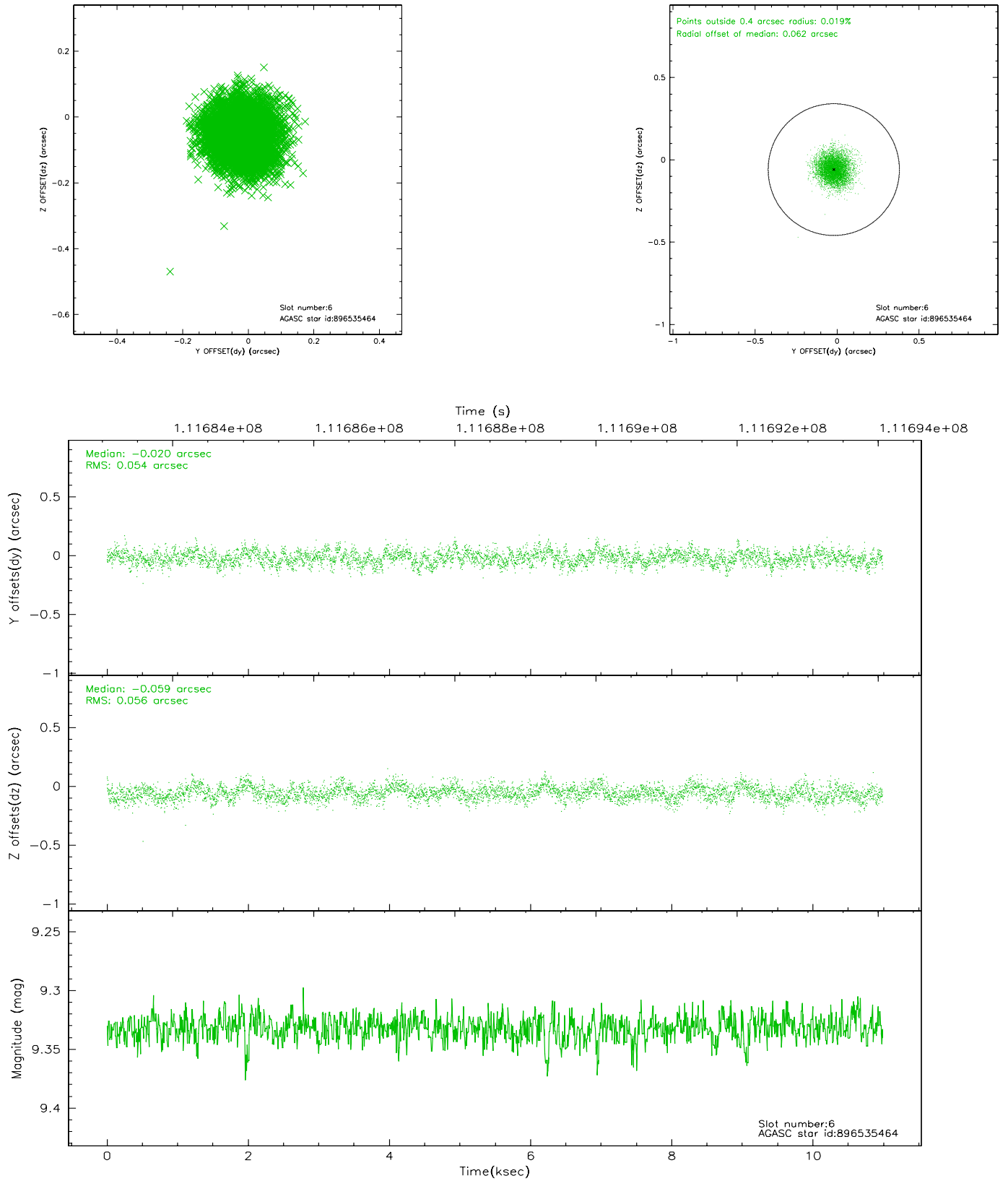
## 2.4.2 Slot 4



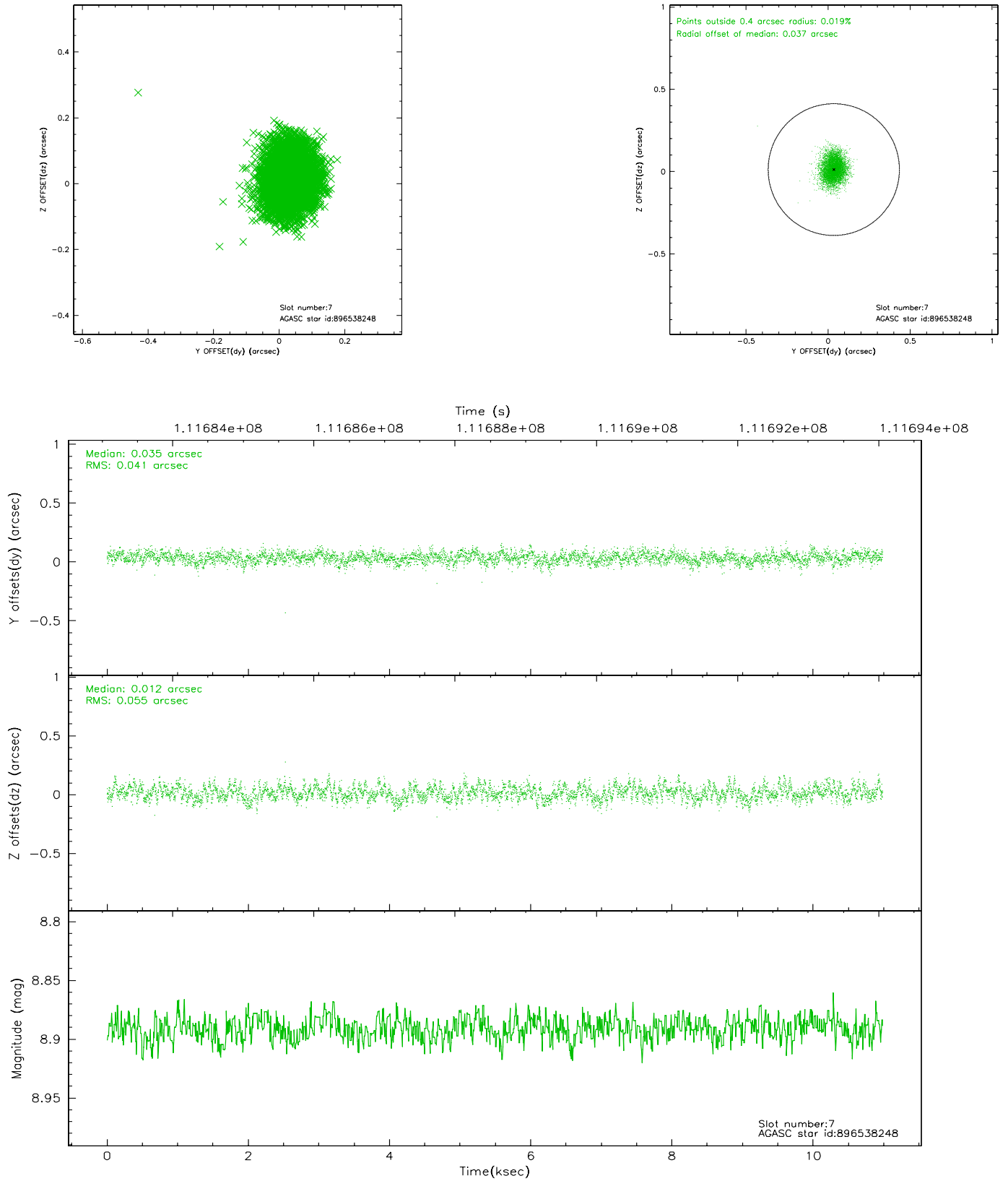
### 2.4.3 Slot 5



## 2.4.4 Slot 6

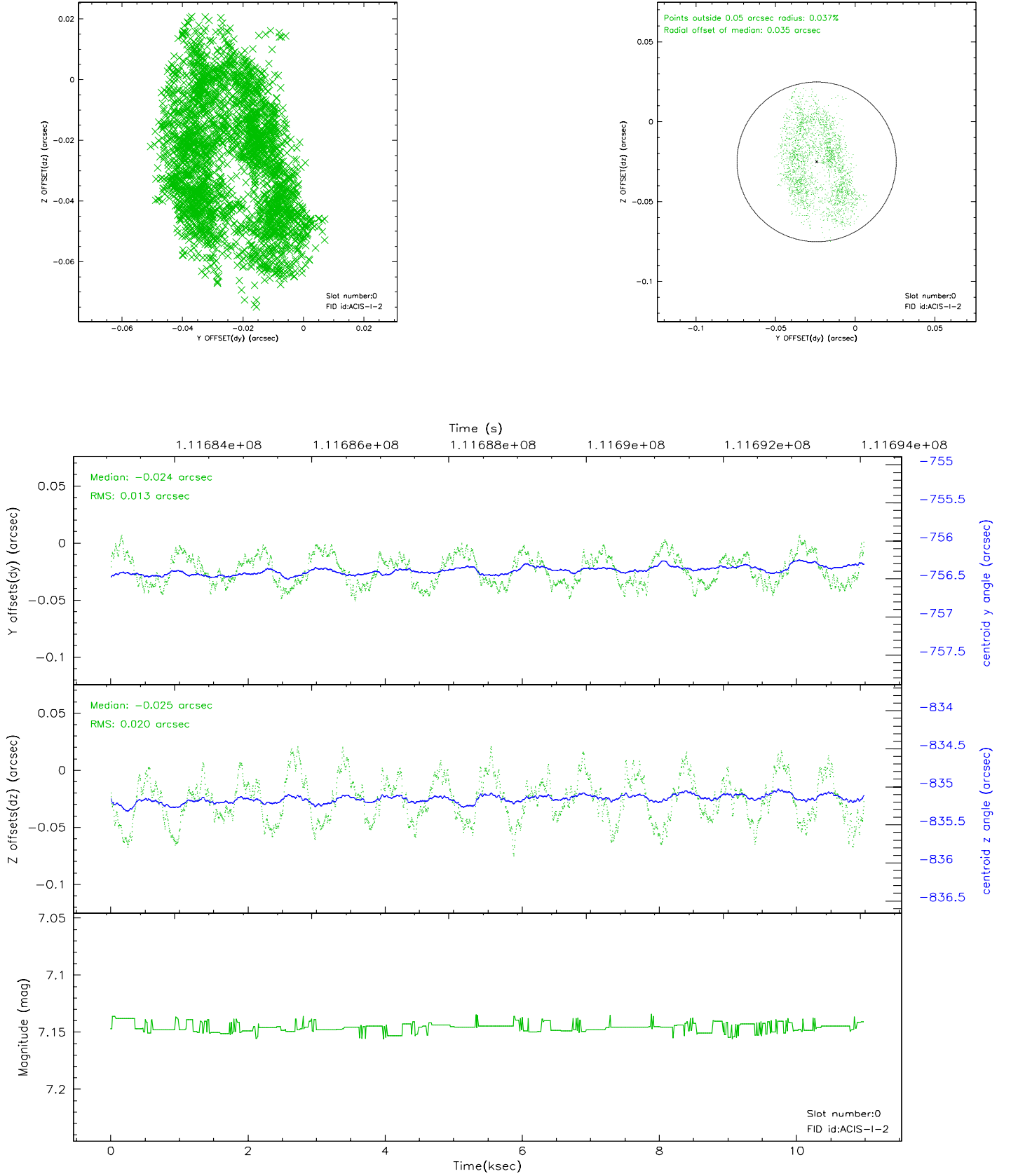


## 2.4.5 Slot 7

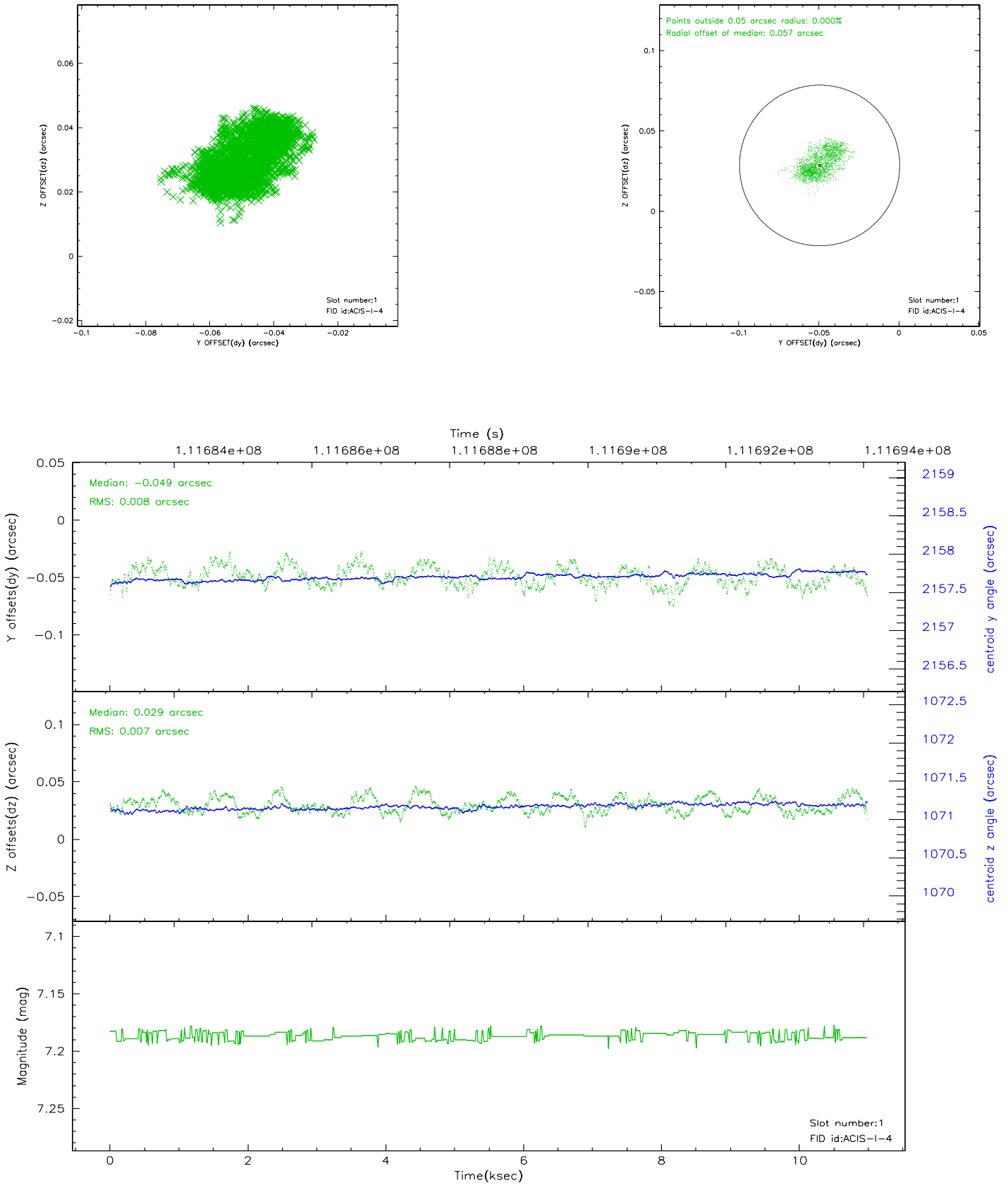


## 2.5 FID Slots

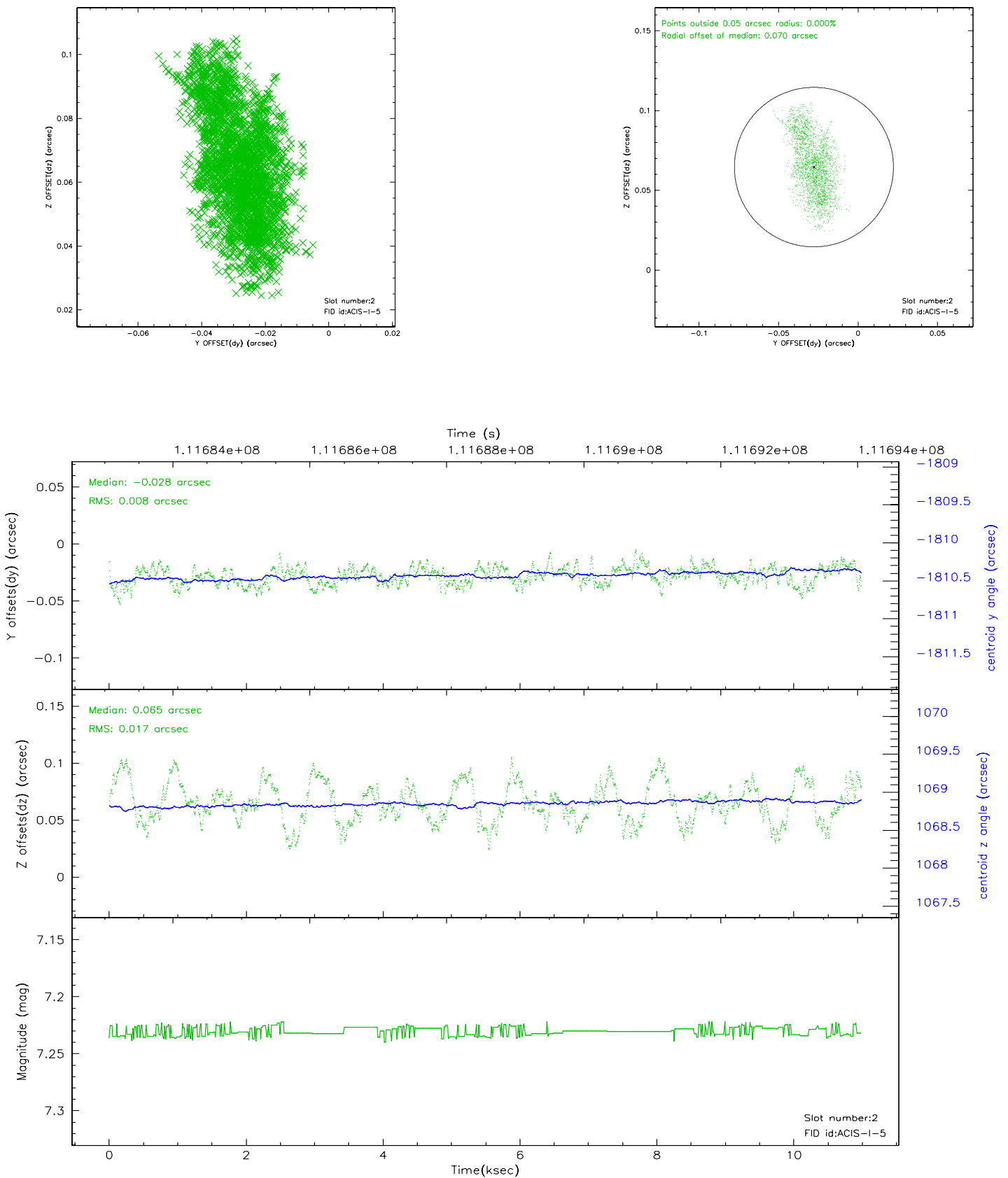
### 2.5.1 Slot 0



## 2.5.2 Slot 1

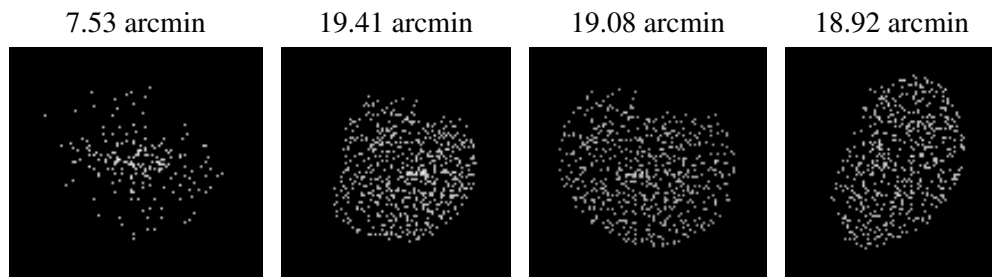


### 2.5.3 Slot 2





### 3 Point Sources



## A Summary

### A.1 Status

V&V Scientist	Jen Lauer
V&V Date (YYYY-MM-DD)	2006.12.14
V&V Edition	1
V&V Disposition and Status	OK
V&V Charge Time	10.6

### A.2 Comments

Roll constraint met.