

V&V Reference Report

L2 ASCDS Version : 7.6.9

Observation 2279 - L2 Version 001
Chandra X-Ray Center

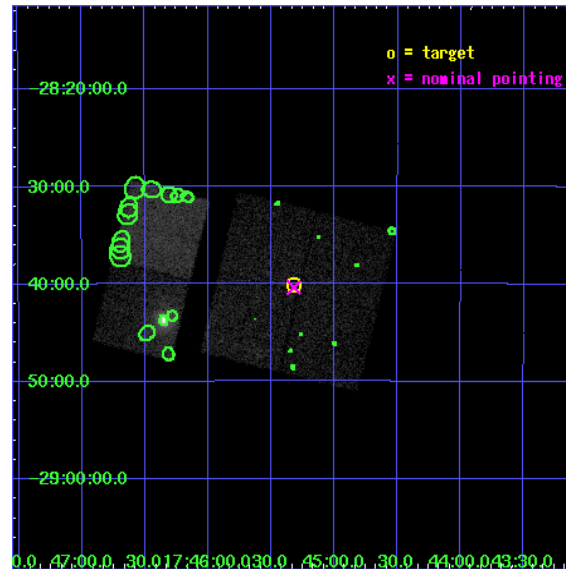
L2 Processing Date : Dec 14 2006

Contents

1	Front	2
2	OBI	3
2.1	OBI	3
2.1.1	Images	3
2.1.2	Bias	3
2.1.3	Parameters	4
2.1.4	Events	4
2.2	Compared Parameters	5
2.3	Aspect	6
2.4	Star Slots	9
2.4.1	Slot 3	9
2.4.2	Slot 4	10
2.4.3	Slot 5	11
2.4.4	Slot 6	12
2.4.5	Slot 7	13
2.5	FID Slots	14
2.5.1	Slot 0	14
2.5.2	Slot 1	15
2.5.3	Slot 2	16
3	Point Sources	17
A	Summary	18
A.1	Status	18
A.2	Comments	18

1 Front

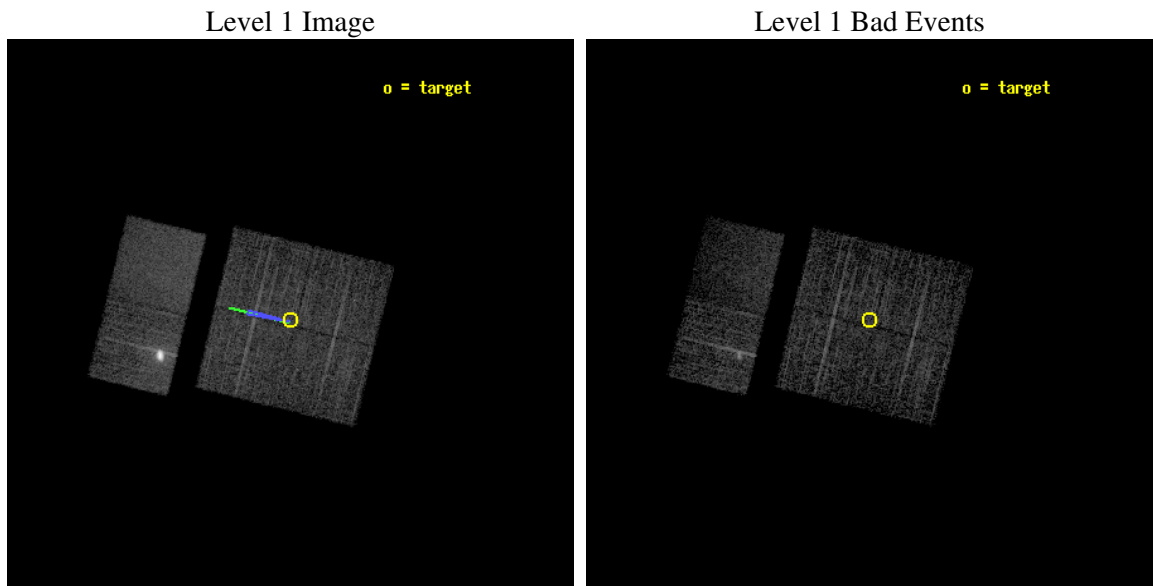
seq_num	900106
obs_id	2279
title	CHANDRA SURVEY OF THE GALACTIC RIDGE AROUND THE MILKY WAY CENTER
observer	Prof. Q. Daniel Wang
object	GCS 12
dtcycle	0
cycle	P
ra_targ	266.3311
dec_targ	-28.6681
ra_nom	266.33028334705
dec_nom	-28.672789300912
roll_nom	283.80730184313
revision	2
ontime	11756.759030715
livetime	11607.887868797
ontime0	11760.000010952
ontime1	11760.000010952
ontime2	11760.000010952
ontime3	11756.759030715
ontime6	11759.151606023
ontime7	11760.000010952
l2events	74452



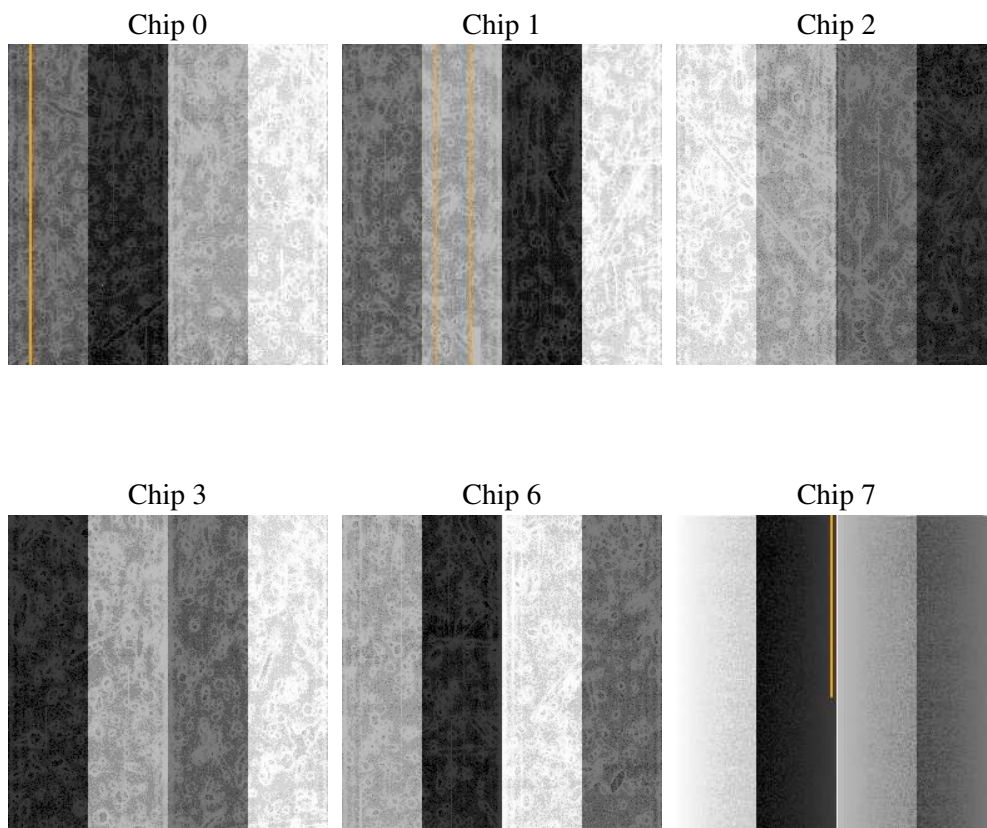
2 OBI

2.1 OBI

2.1.1 Images



2.1.2 Bias



2.1.3 Parameters

obi_num	0
ascdsver	7.6.9
caldbver	3.2.4
date	2006-12-14T12:56:21
revision	2

sched_exp_time	12000.000000
ontime	11761.613219872
ontime0	11764.85420011
ontime1	11764.85420011
ontime2	11764.85420011
ontime3	11761.613219872
ontime6	11761.613190025
ontime7	11764.85420011
l1events	227596

2.1.4 Events

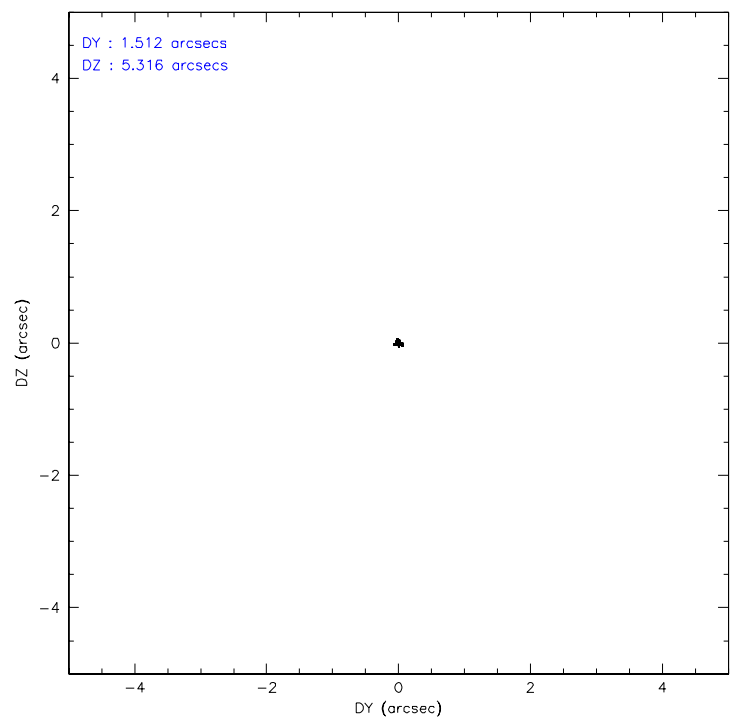
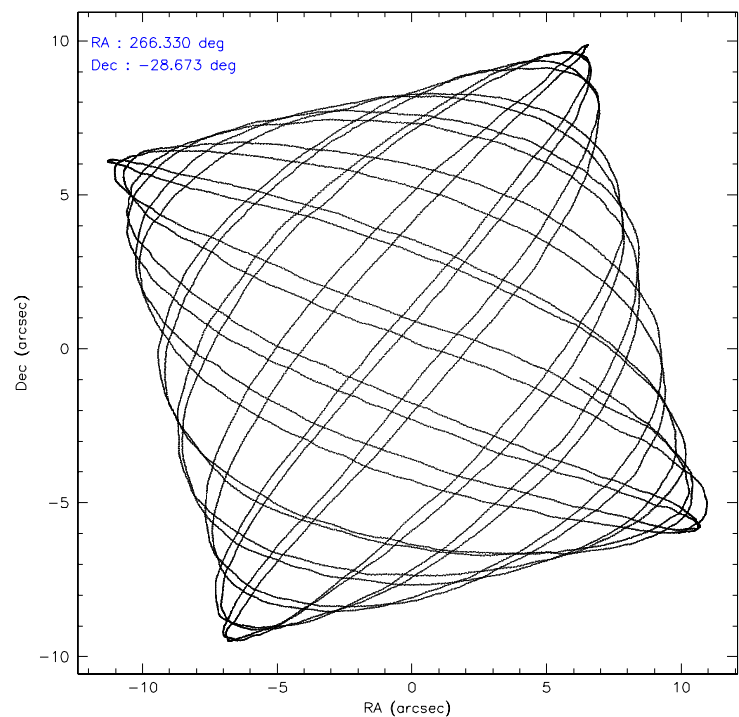
	ccd 0	ccd 1	ccd 2	ccd 3	ccd 6	ccd 7
level 1 events	30792	30218	35100	32704	58375	40407
rejected events	24132	23725	26506	25840	28454	19745
rejected %	78%	78%	75%	79%	48%	48%

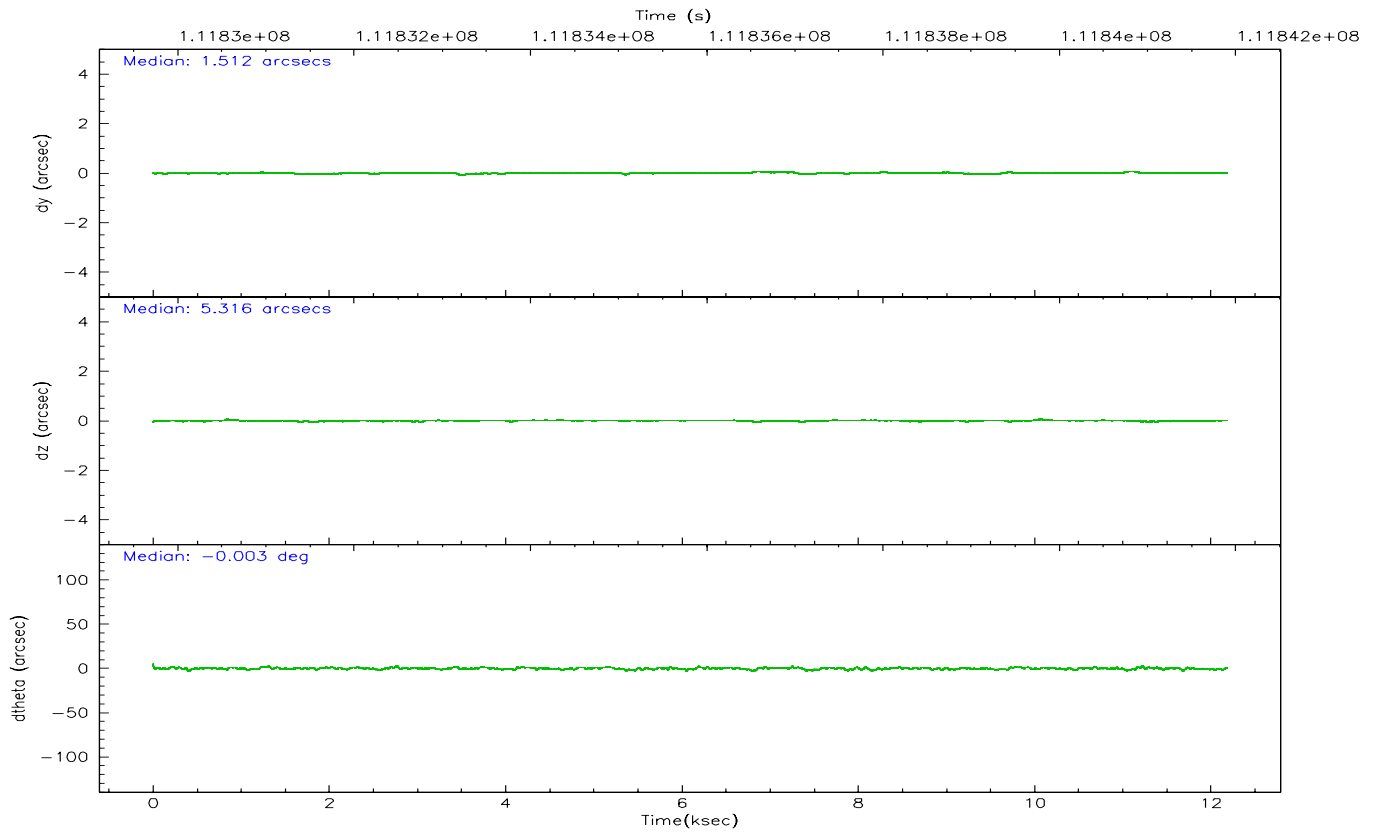
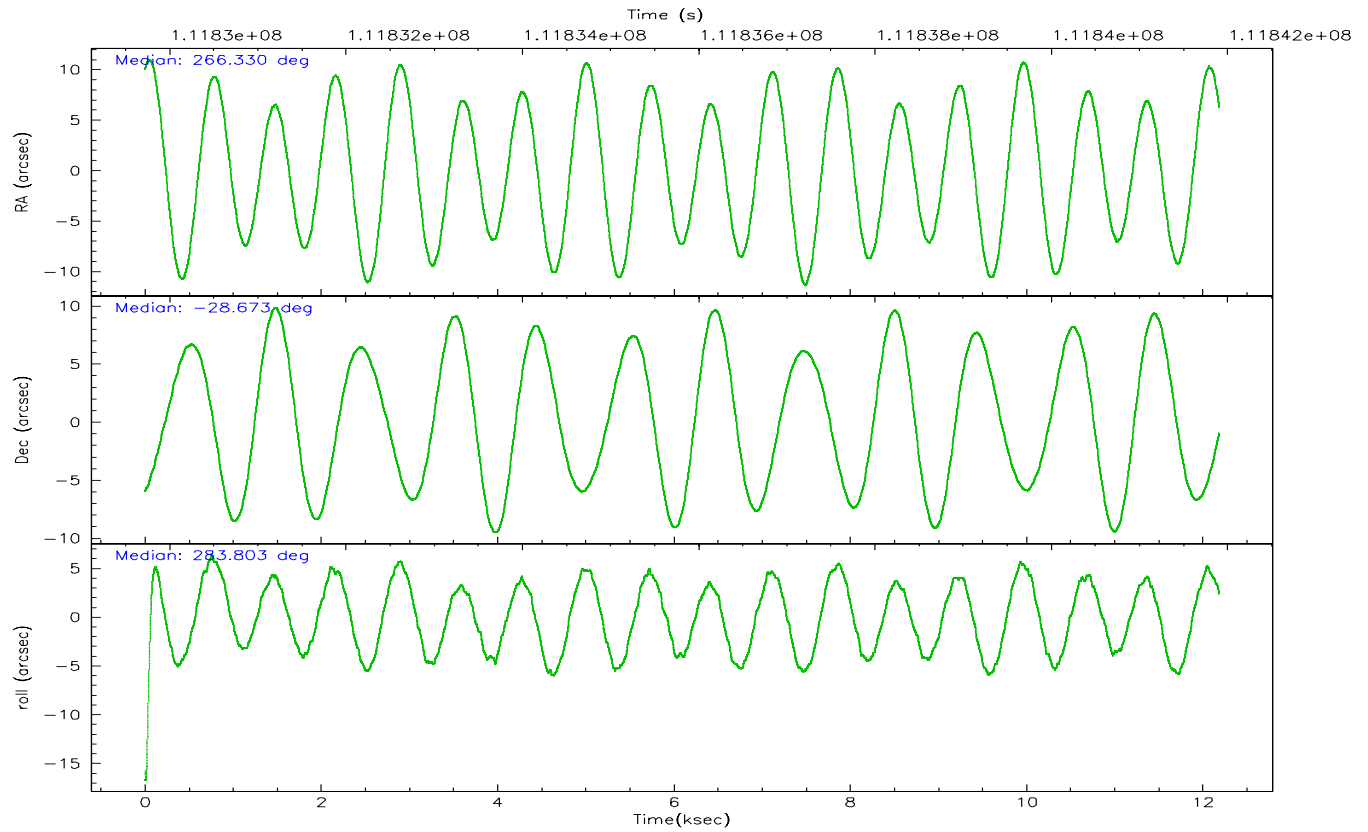
	ccd 0	ccd 1	ccd 2	ccd 3	ccd 6	ccd 7
grade 0 events	3430	3199	4934	3636	17666	1385
	11%	10%	14%	11%	30%	3%
grade 1 events	33	30	44	39	163	32
	0%	0%	0%	0%	0%	0%
grade 2 events	1304	1208	1458	1267	5038	5321
	4%	3%	4%	3%	8%	13%
grade 3 events	523	519	552	485	1802	1205
	1%	1%	1%	1%	3%	2%
grade 4 events	467	586	602	514	1880	1208
	1%	1%	1%	1%	3%	2%
grade 5 events	1220	1338	1126	1382	1657	3382
	3%	4%	3%	4%	2%	8%
grade 6 events	939	984	1053	969	3549	11555
	3%	3%	3%	2%	6%	28%
grade 7 events	22876	22354	25331	24412	26620	16319
	74%	73%	72%	74%	45%	40%

2.2 Compared Parameters

Parameter	Planned	Actual	Parameter	Planned	Actual
Instrument	ACIS	ACIS	Obspar format version number	6	6
Detector	ACIS-012367	ACIS-012367	Obspar file type	PREDICTED	ACTUAL
Grating	NONE	NONE	Obspar update status	NONE	UPDATED
Data mode	FAINT	FAINT	Number of optional ACIS chips dropped	0	0
Observation mode	POINTING	POINTING	On-chip summing requested	N	N
Pointing RA	266.308573	266.3302833470545	Subarray requested	NONE	NONE
Pointing Dec	-28.652986	-28.67278930091215	Alternating exposures requested	N	N
Pointing Roll	283.588196	283.8073018431336	Primary exposure time	0.000000	3.2
Roll angle	283.600000	283.600000			
Roll tolerance	2.000000	2.000000			
Roll constraint allows 180D rotation	N	N			
SIM focus pos (mm)	-0.782348	-0.7809083437167272			
SIM defocus (mm)	0	0.001439871863259334			
SIM translation stage pos (mm)	-233.592463	-233.5874344608287			
SIM translation stage offset (mm)	0	-0.005018542100998502			
Observation start time	111829904.184000	111829528.31519			
Observation start date	2001-07-18T07:50:40	2001-07-18T07:45:28			
Observation end time	111841904.184000	111842038.44068			
Observation end date	2001-07-18T11:10:40	2001-07-18T11:13:58			
Read mode	TIMED	TIMED			

2.3 Aspect



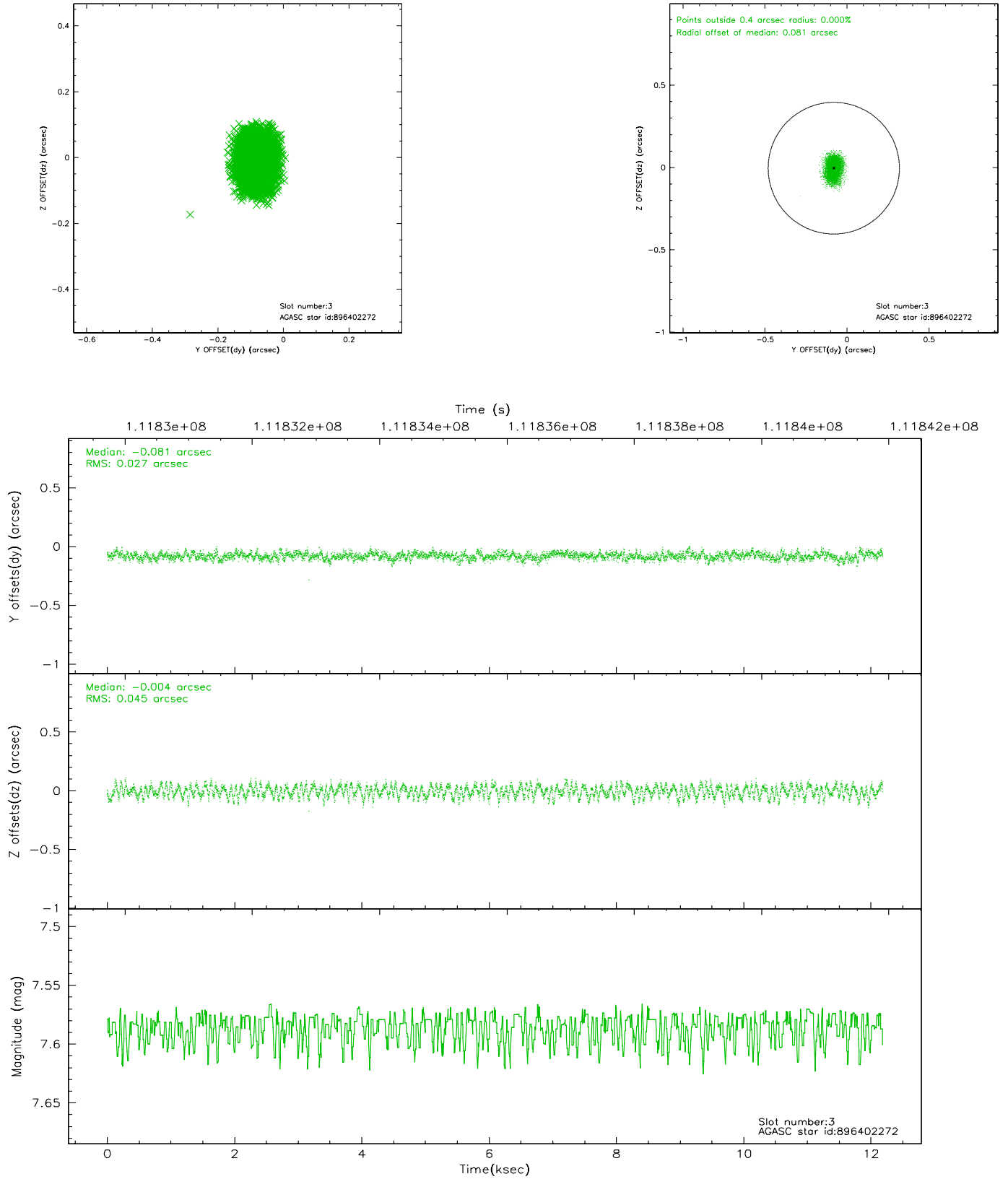


Slot Statistics

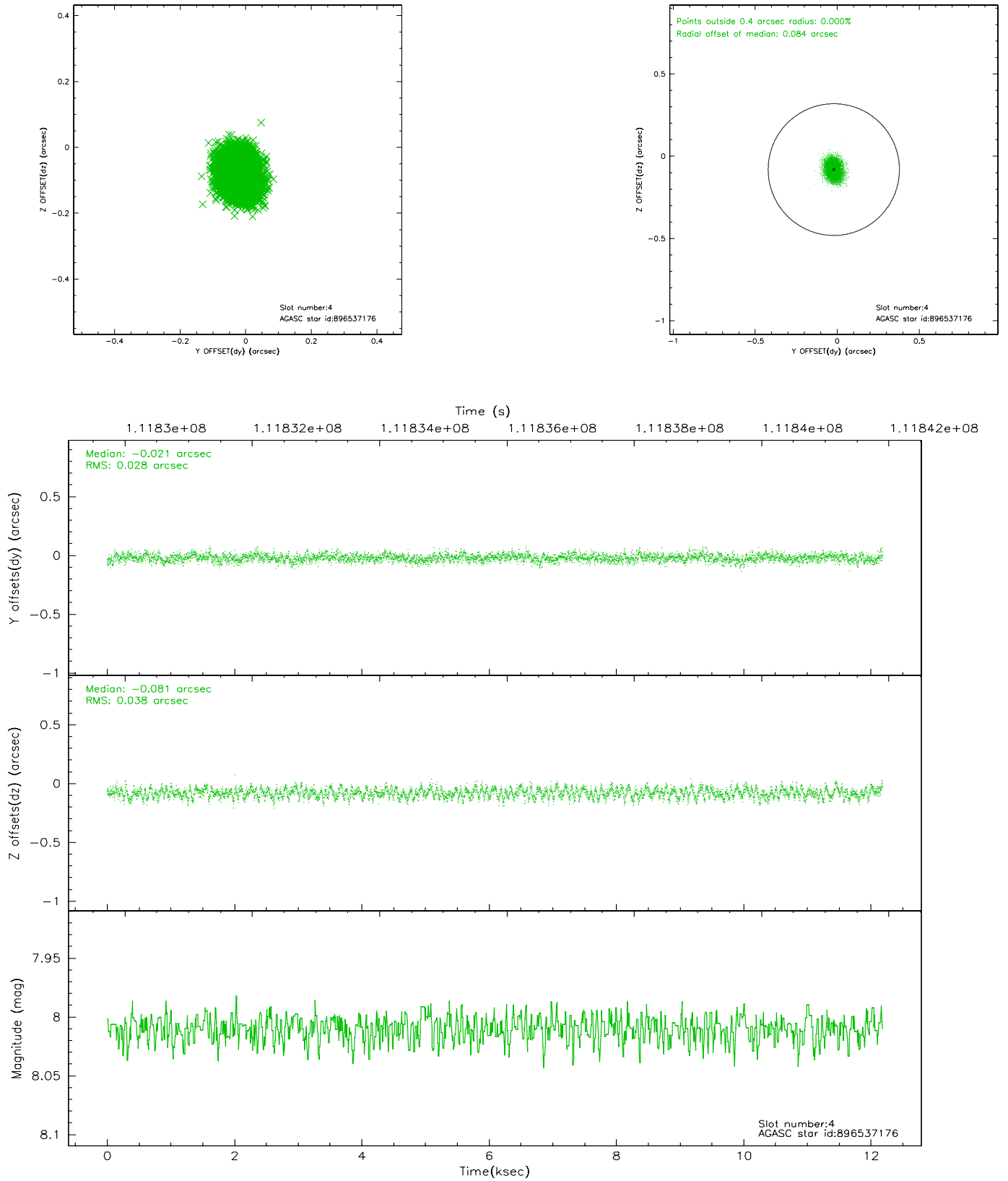
slot	status	id	mag	n_pts	med_dy	med_dz	dr1	dr2	ra	dec	mean_y	mean_z
0	FID	ACIS-I-2	7.15	2972	-0.026	0.010	0.007	0.013	0.000000	0.000000	-755.86	-835.04
1	FID	ACIS-I-4	7.19	2972	-0.056	0.011	0.010	0.016	0.000000	0.000000	2157.95	1071.00
2	FID	ACIS-I-6	7.27	2972	-0.017	0.042	0.011	0.019	0.000000	0.000000	404.70	1713.64
3	GUIDE	896402272	7.58	5944	-0.081	-0.004	0.056	0.090	265.637294	-28.313189	-1682.80	-1781.72
4	GUIDE	896537176	8.01	5945	-0.021	-0.081	0.051	0.082	266.498272	-28.678259	229.58	560.93
5	GUIDE	896540808	7.52	5945	-0.028	0.043	0.049	0.084	265.985401	-29.308604	2057.58	-1540.31
6	GUIDE	896536320	8.99	5945	0.099	0.056	0.082	0.131	266.369048	-29.307026	2334.03	-368.28
7	GUIDE	896541576	8.18	5943	0.036	-0.010	0.071	0.115	267.051055	-28.762912	942.79	2183.28

2.4 Star Slots

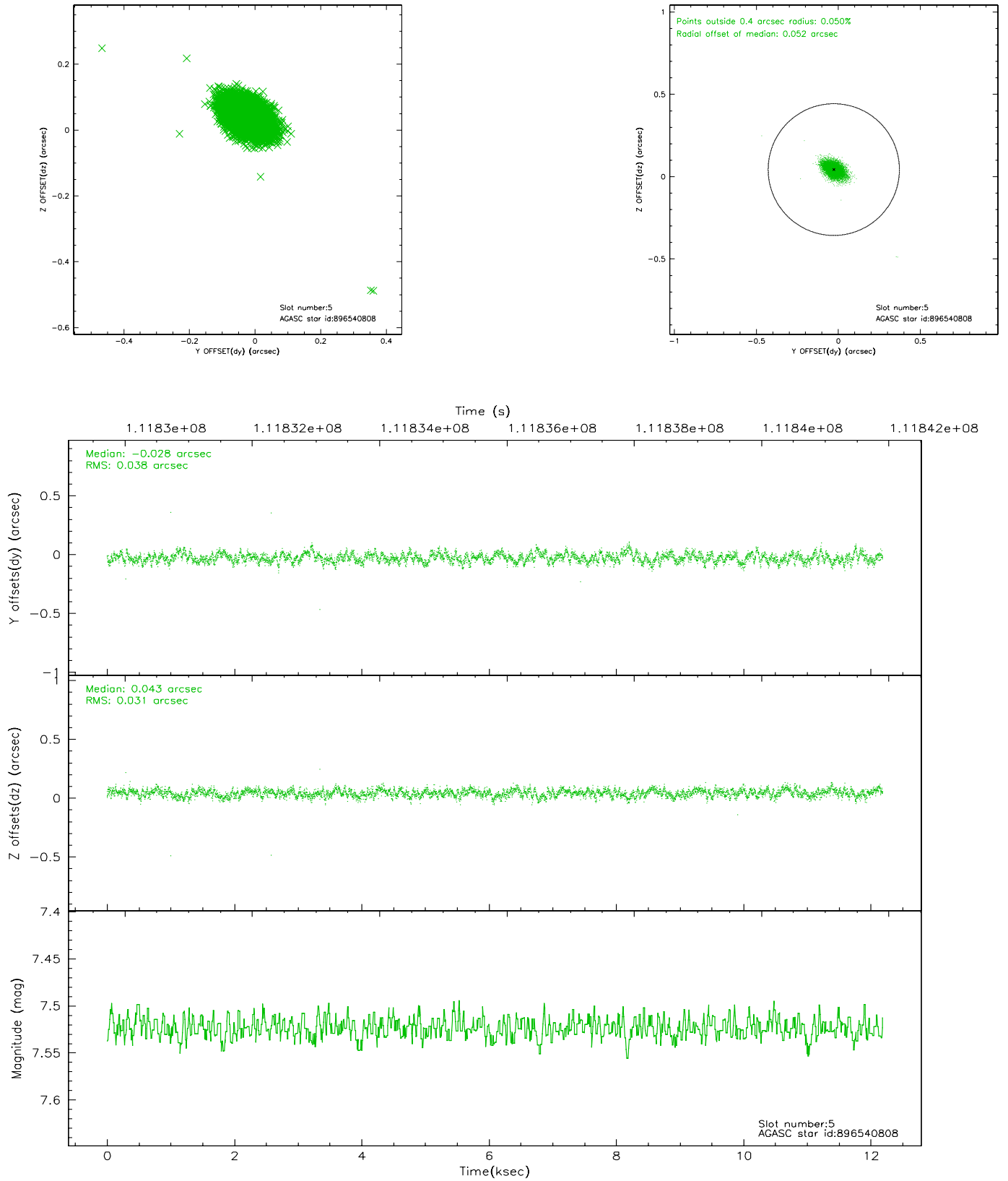
2.4.1 Slot 3



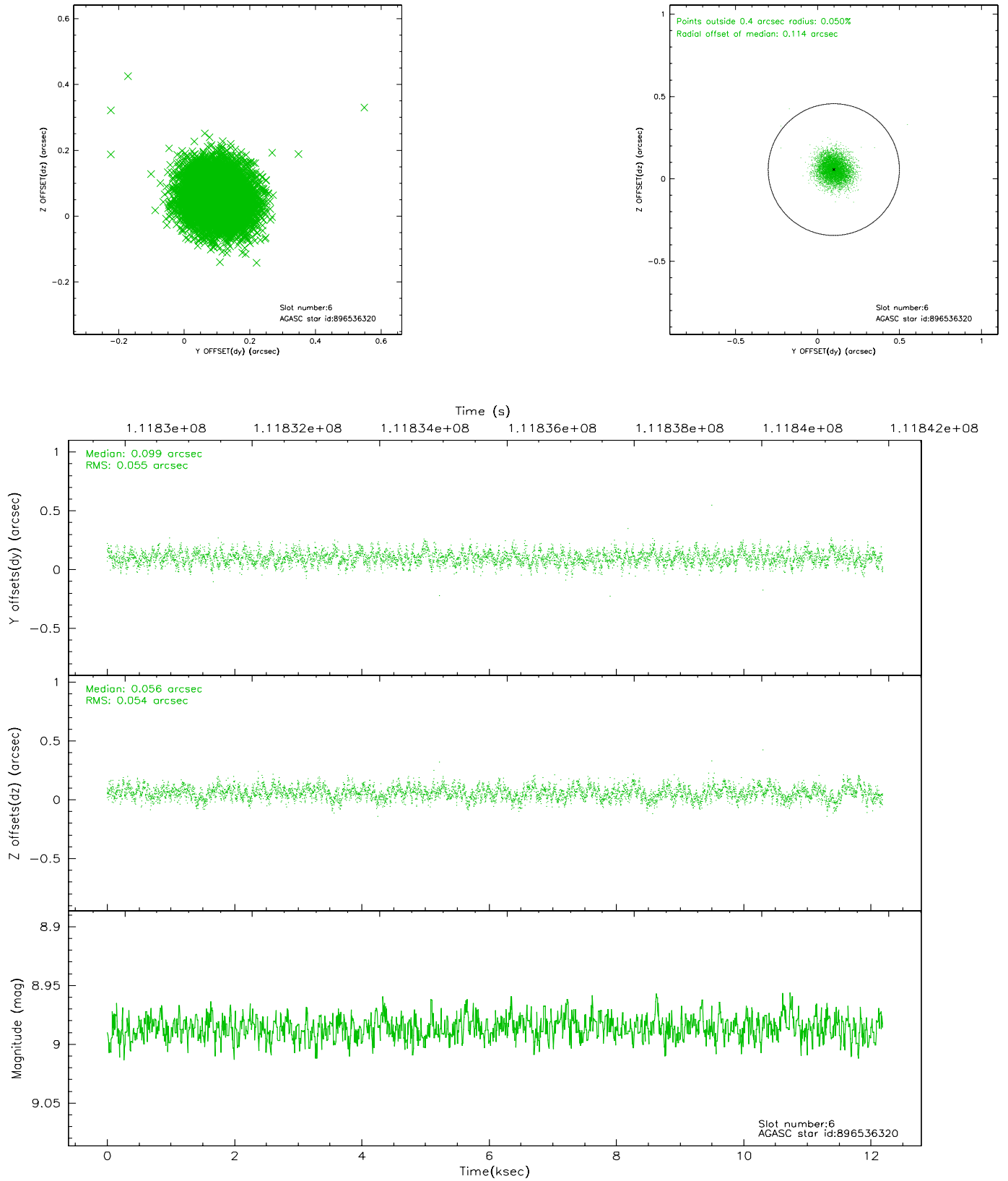
2.4.2 Slot 4



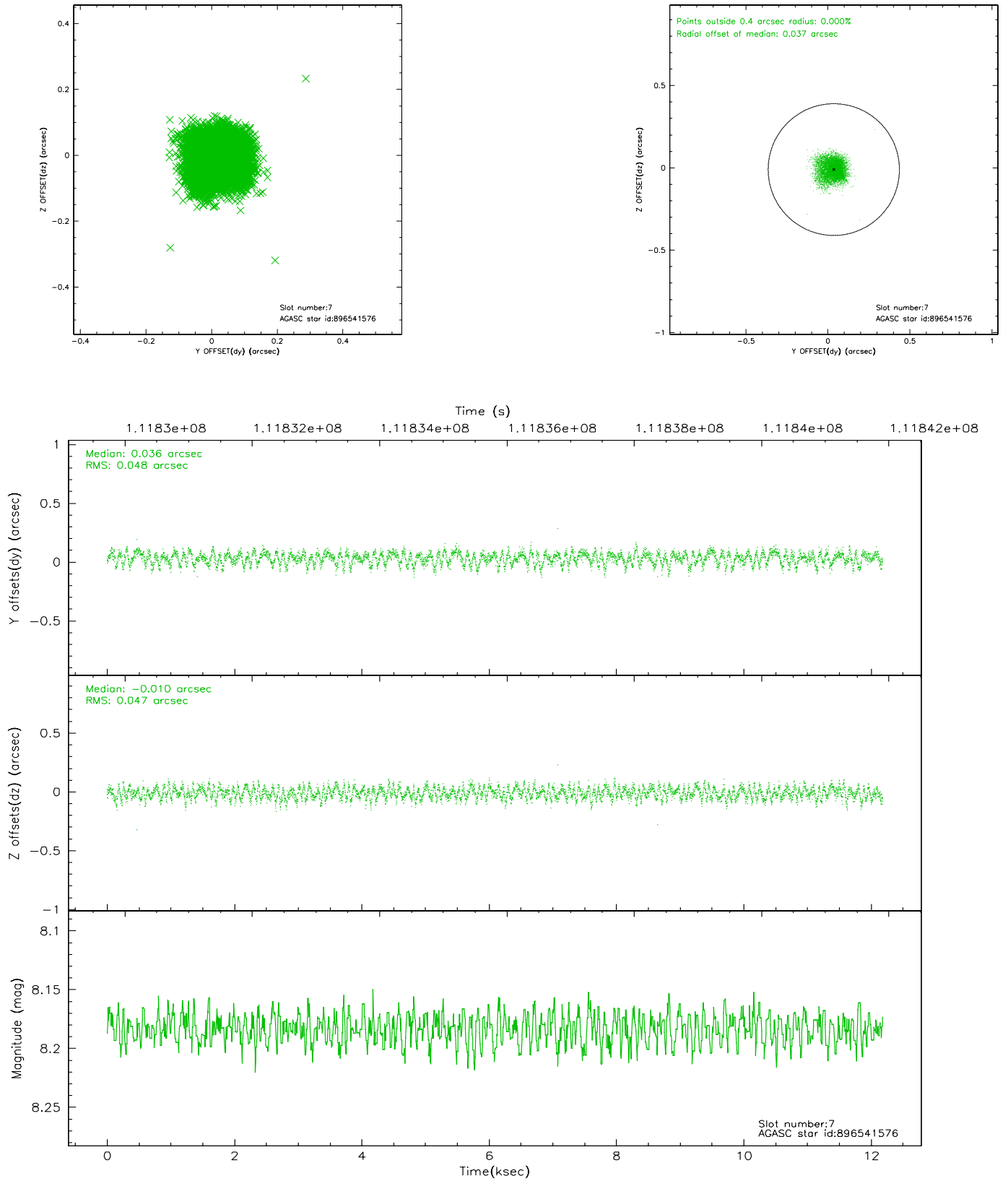
2.4.3 Slot 5



2.4.4 Slot 6

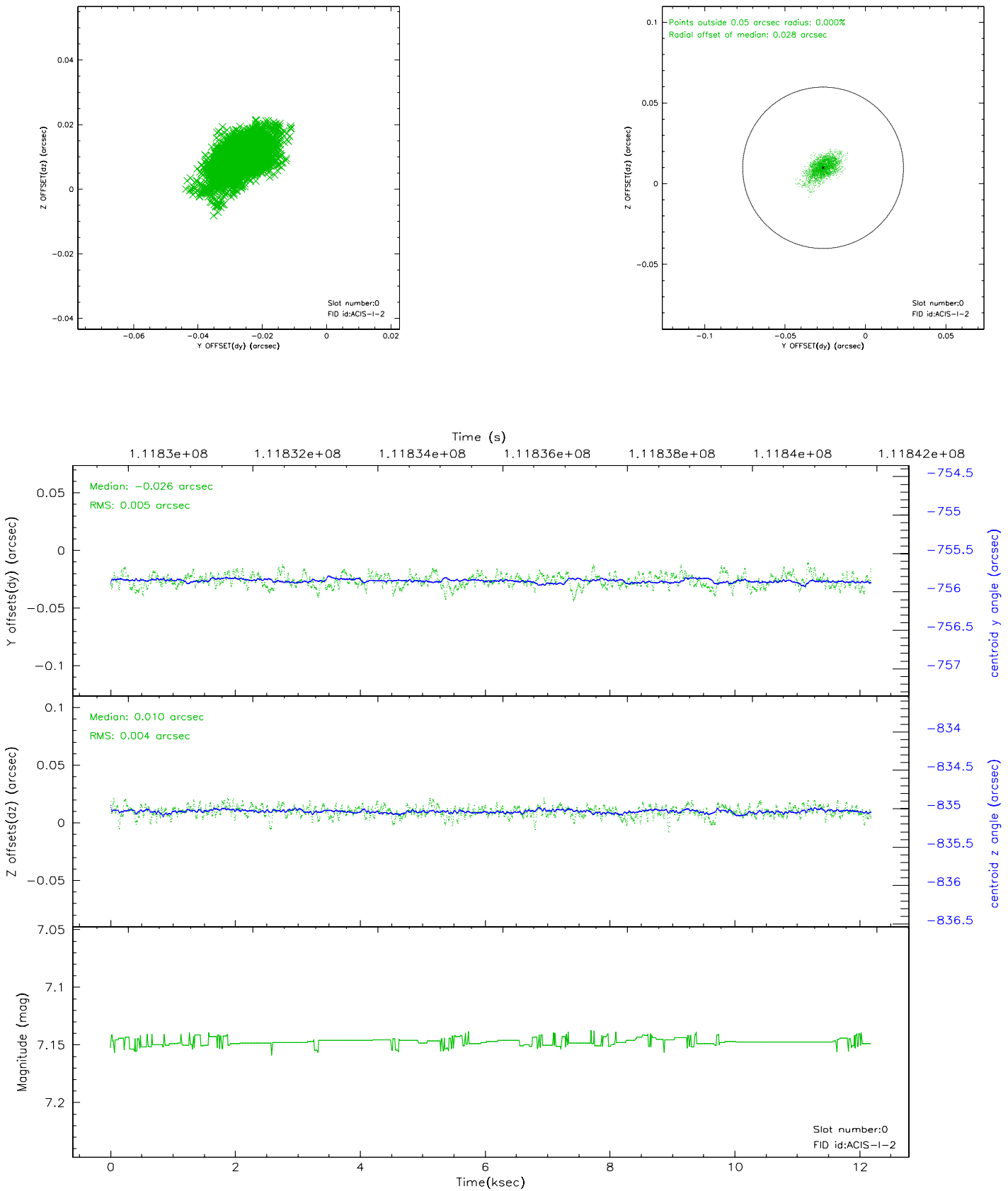


2.4.5 Slot 7

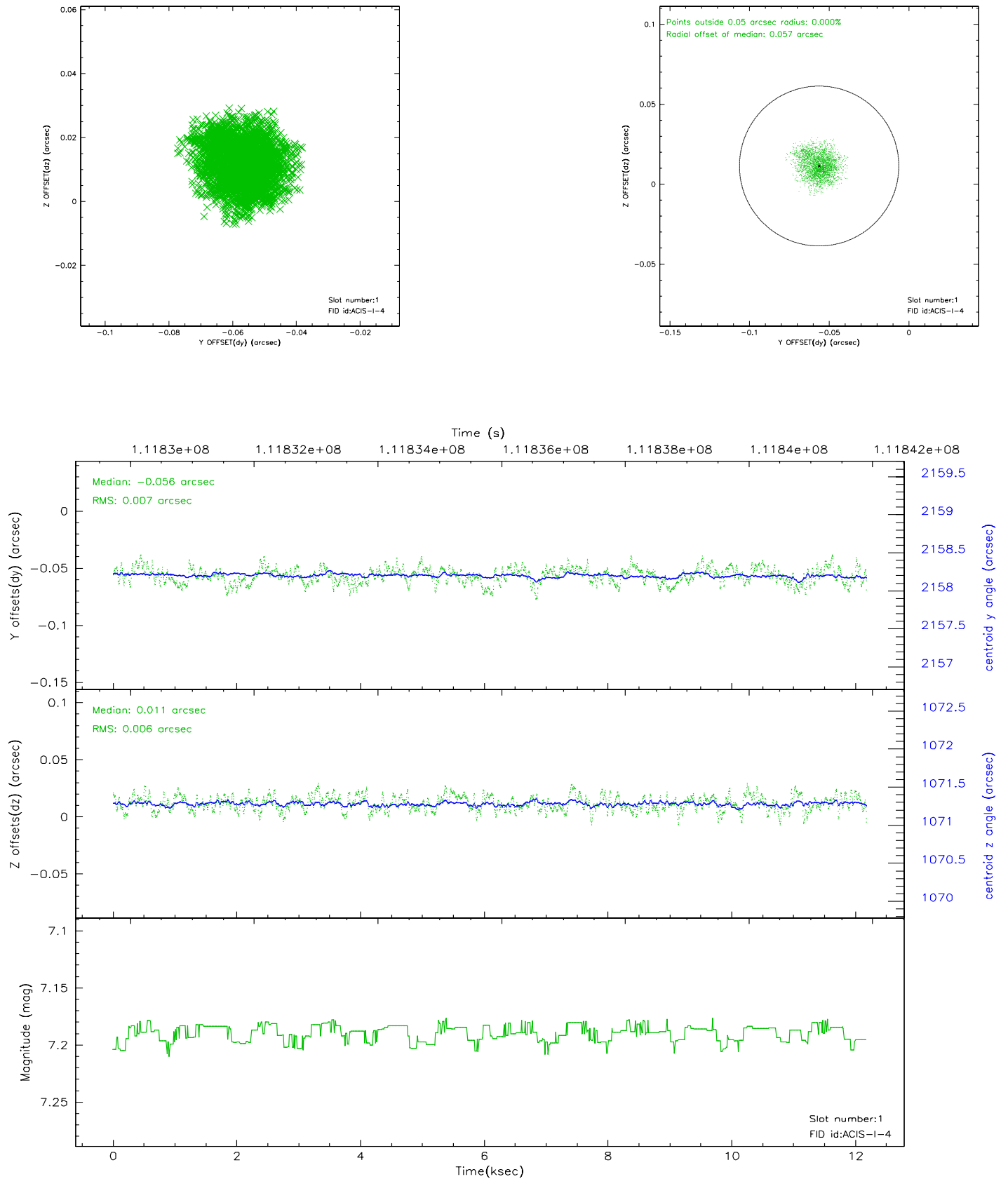


2.5 FID Slots

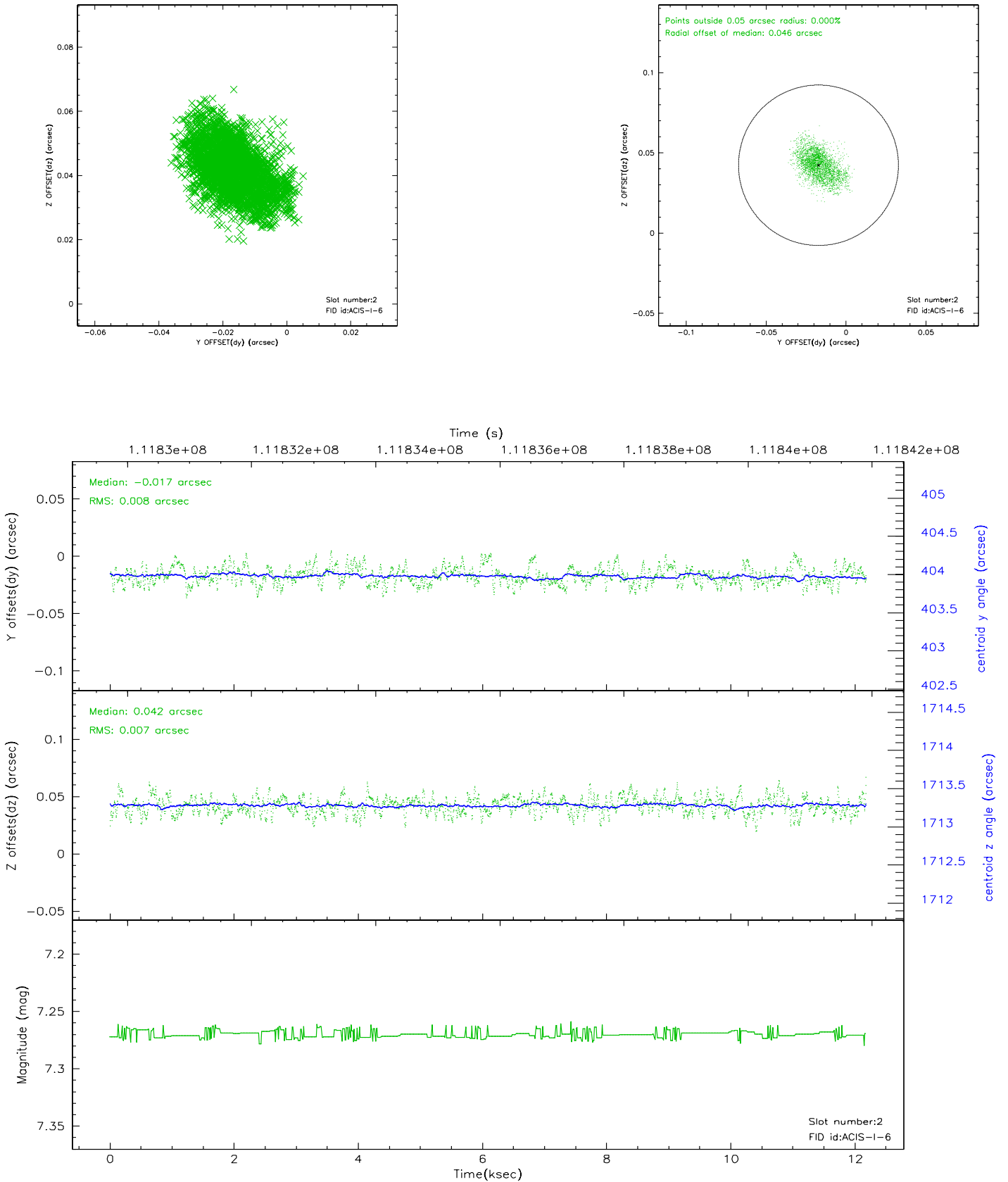
2.5.1 Slot 0



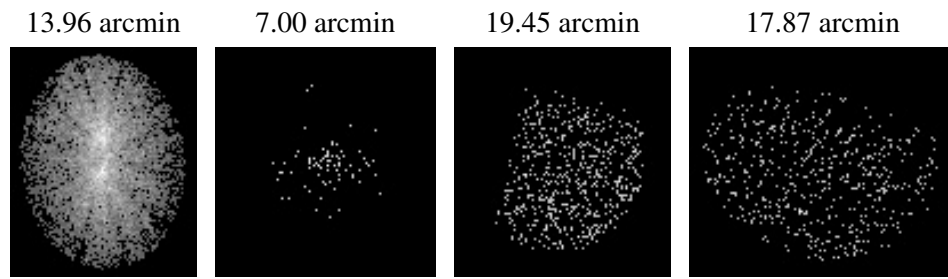
2.5.2 Slot 1



2.5.3 Slot 2



3 Point Sources



A Summary

A.1 Status

V&V Scientist	Jen Lauer
V&V Date (YYYY-MM-DD)	2006.12.14
V&V Edition	1
V&V Disposition and Status	OK
V&V Charge Time	11.759

A.2 Comments

Roll constraint met.