

V&V Reference Report

L2 ASCDS Version : 7.6.9

Observation 2276 - L2 Version 001
Chandra X-Ray Center

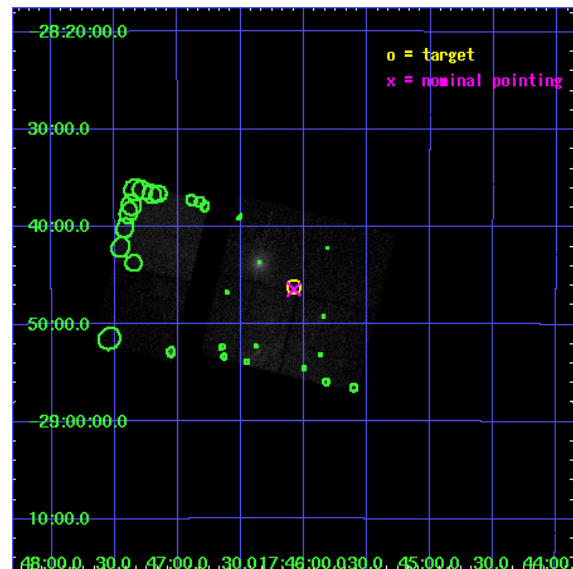
L2 Processing Date : Dec 14 2006

Contents

1	Front	2
2	OBI	3
2.1	OBI	3
2.1.1	Images	3
2.1.2	Bias	3
2.1.3	Parameters	4
2.1.4	Events	4
2.2	Compared Parameters	5
2.3	Aspect	6
2.4	Star Slots	9
2.4.1	Slot 3	9
2.4.2	Slot 4	10
2.4.3	Slot 5	11
2.4.4	Slot 6	12
2.4.5	Slot 7	13
2.5	FID Slots	14
2.5.1	Slot 0	14
2.5.2	Slot 1	15
2.5.3	Slot 2	16
3	Point Sources	17
A	Summary	18
A.1	Status	18
A.2	Comments	18

1 Front

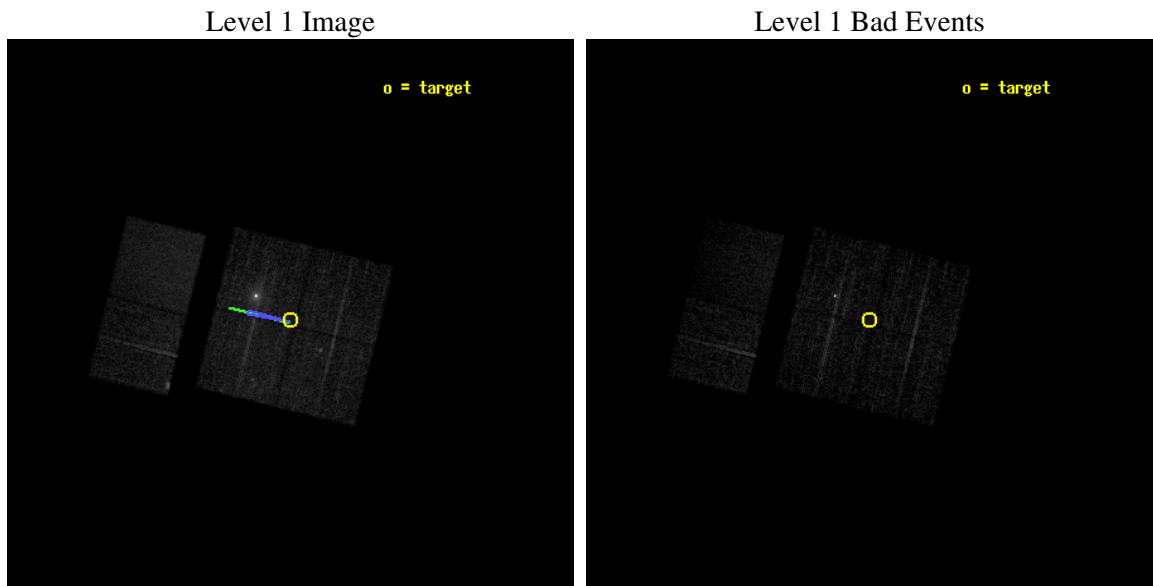
seq_num	900103
obs_id	2276
title	CHANDRA SURVEY OF THE GALACTIC RIDGE AROUND THE MILKY WAY CENTER
observer	Prof. Q. Daniel Wang
object	GCS 11
dtcycle	0
cycle	P
ra_targ	266.5209
dec_targ	-28.7697
ra_nom	266.52002352871
dec_nom	-28.774350284958
roll_nom	283.80729285018
revision	2
ontime	11760.000010952
livetime	11611.087809792
ontime0	11760.000010952
ontime1	11760.000010952
ontime2	11760.000010952
ontime3	11760.000010952
ontime6	11756.7590307
ontime7	11760.000010952
l2events	90427



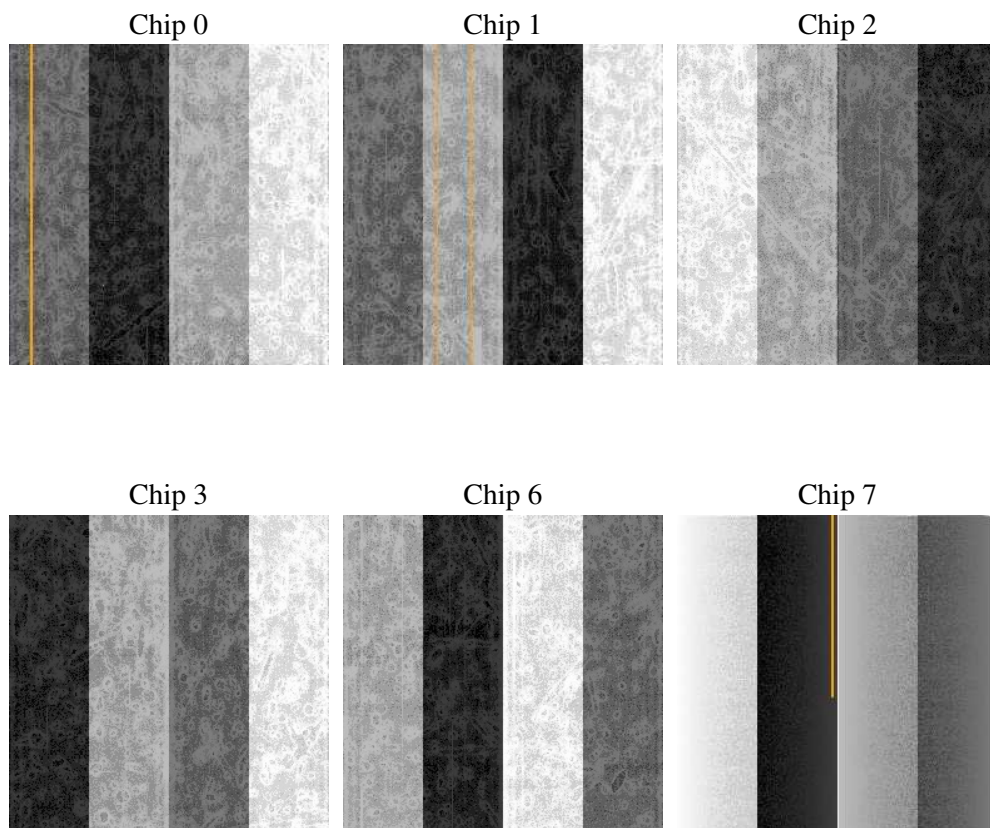
2 OBI

2.1 OBI

2.1.1 Images



2.1.2 Bias



2.1.3 Parameters

obi_num	0
ascdsver	7.6.9
caldbver	3.2.4
date	2006-12-14T12:31:28
revision	2

sched_exp_time	12000.000000
ontime	11764.853960156
ontime0	11764.853960156
ontime1	11764.853960156
ontime2	11764.853980064
ontime3	11764.853960156
ontime6	11761.612979904
ontime7	11764.853960156
l1events	243367

2.1.4 Events

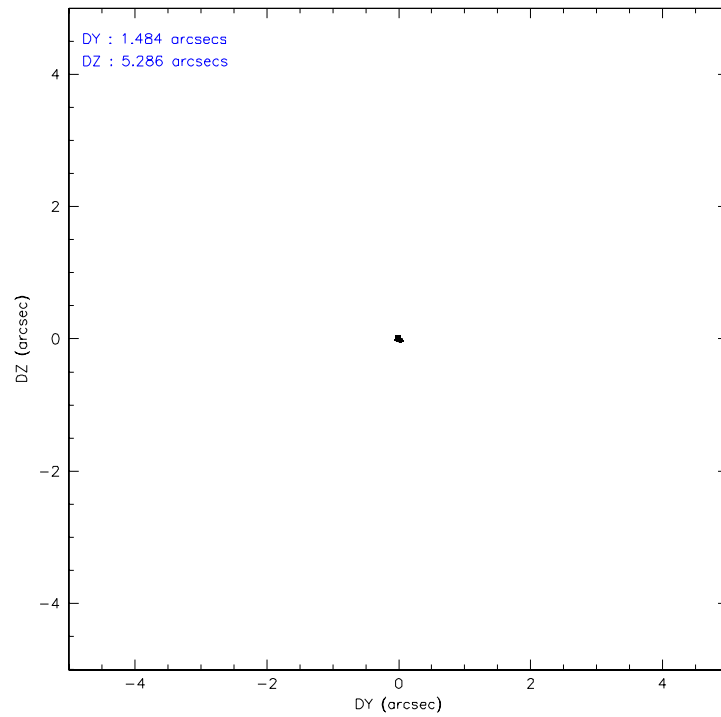
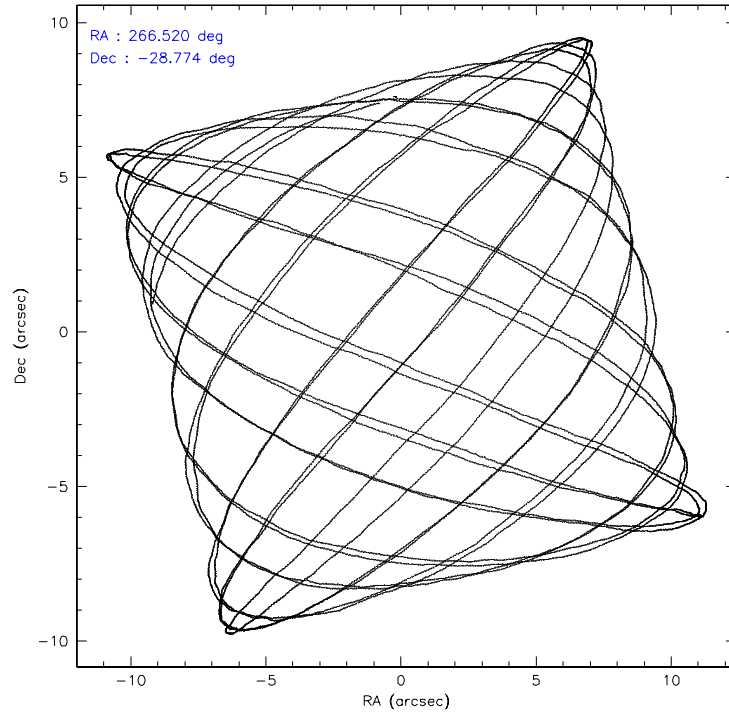
	ccd 0	ccd 1	ccd 2	ccd 3	ccd 6	ccd 7
level 1 events	37952	33058	43604	55564	33563	39626
rejected events	23416	24142	25247	28854	25734	19606
rejected %	61%	73%	57%	51%	76%	49%

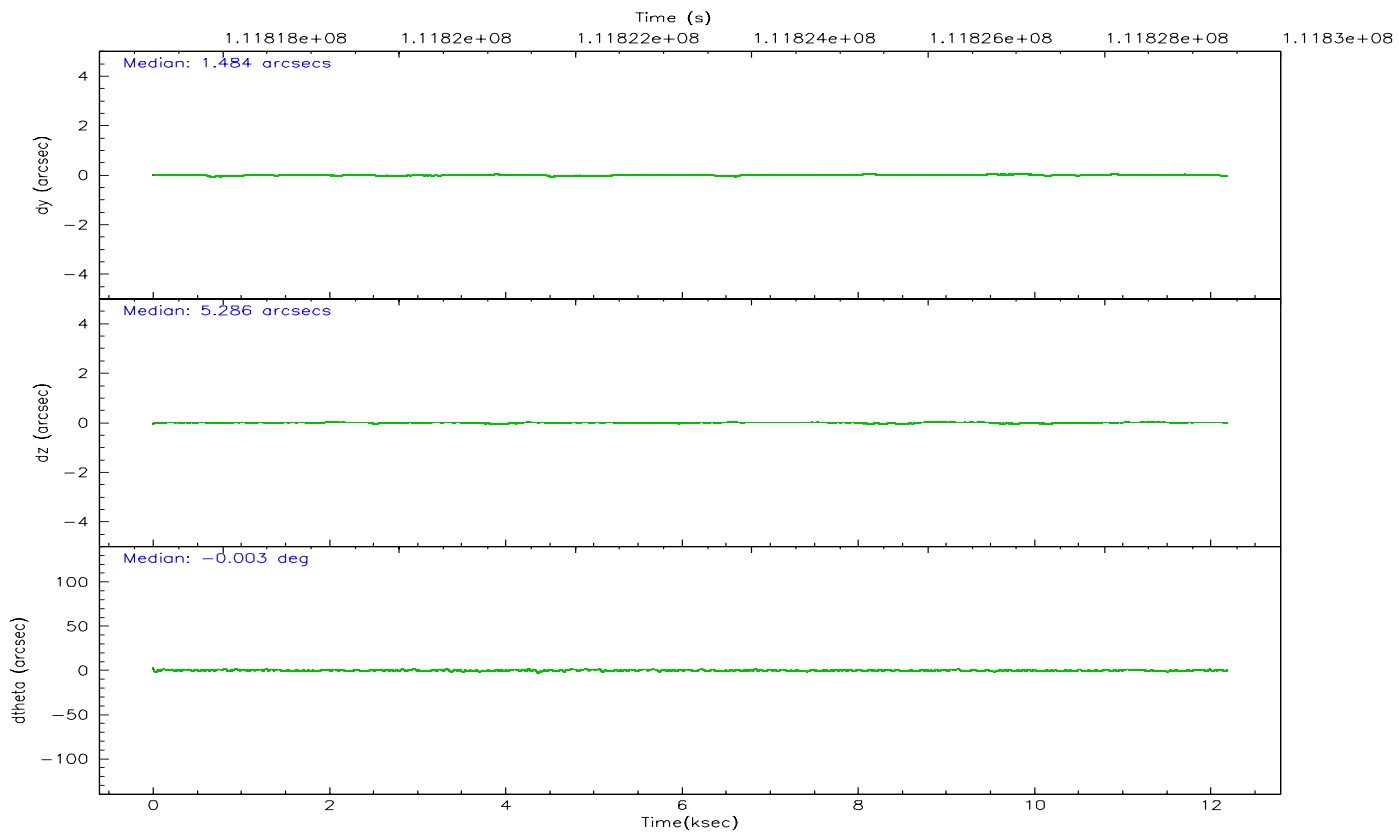
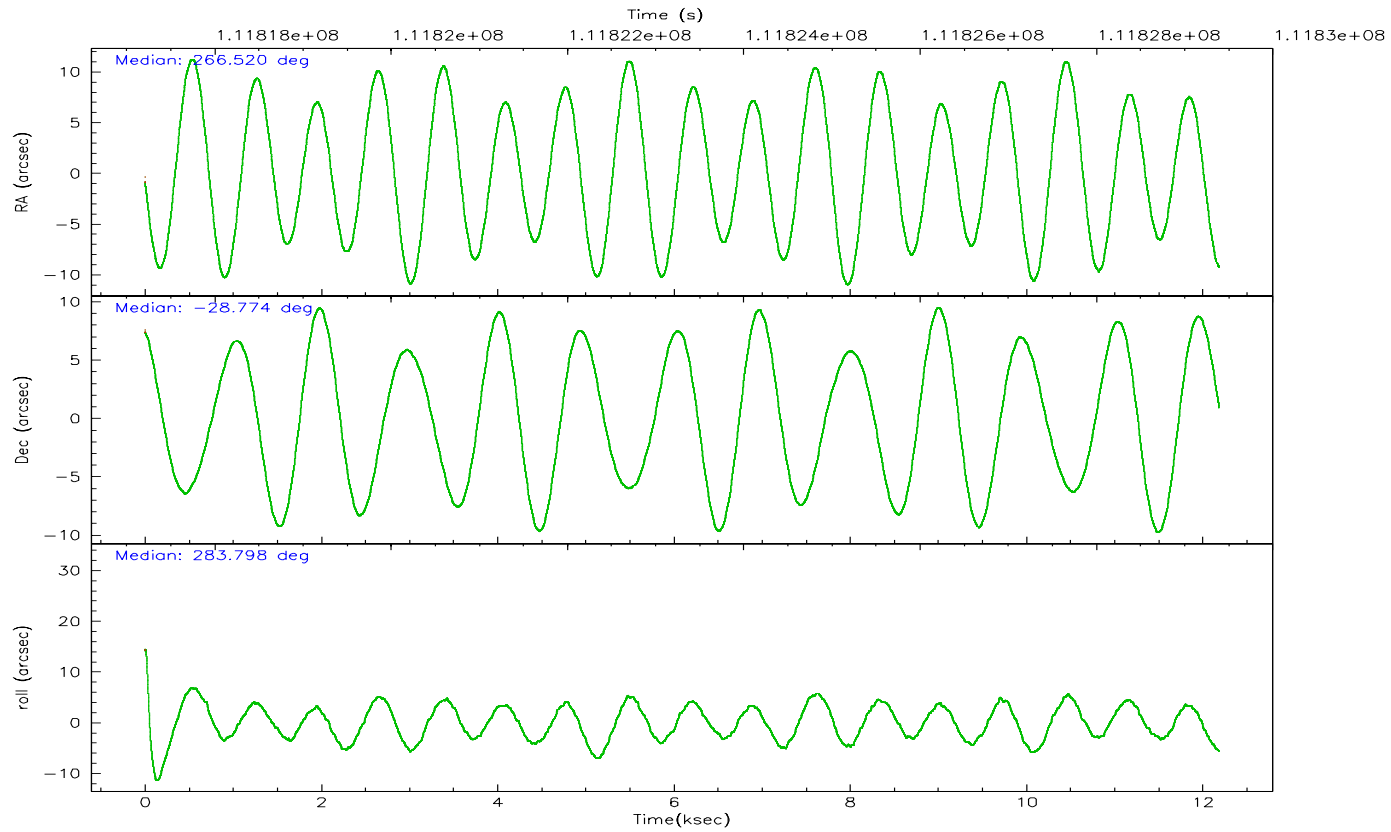
	ccd 0	ccd 1	ccd 2	ccd 3	ccd 6	ccd 7
grade 0 events	8916	5008	11922	15180	4080	1370
	23%	15%	27%	27%	12%	3%
grade 1 events	55	43	91	1039	35	24
	0%	0%	0%	1%	0%	0%
grade 2 events	2326	1534	2767	4719	1431	5170
	6%	4%	6%	8%	4%	13%
grade 3 events	903	637	1069	1713	562	1094
	2%	1%	2%	3%	1%	2%
grade 4 events	843	616	1045	1773	617	1042
	2%	1%	2%	3%	1%	2%
grade 5 events	1220	1385	1142	2395	1404	3349
	3%	4%	2%	4%	4%	8%
grade 6 events	1553	1123	1569	3343	1142	11354
	4%	3%	3%	6%	3%	28%
grade 7 events	22136	22712	23999	25402	24292	16223
	58%	68%	55%	45%	72%	40%

2.2 Compared Parameters

Parameter	Planned	Actual	Parameter	Planned	Actual
Instrument	ACIS	ACIS	Obspar format version number	6	6
Detector	ACIS-012367	ACIS-012367	Obspar file type	PREDICTED	ACTUAL
Grating	NONE	NONE	Obspar update status	NONE	UPDATED
Data mode	FAINT	FAINT	Number of optional ACIS chips dropped	0	0
Observation mode	POINTING	POINTING	On-chip summing requested	N	N
Pointing RA	266.498349	266.5200235287094	Subarray requested	NONE	NONE
Pointing Dec	-28.754595	-28.77435028495783	Alternating exposures requested	N	N
Pointing Roll	283.588158	283.8072928501761	Primary exposure time	0.000000	3.2
Roll angle	283.600000	283.600000			
Roll tolerance	2.000000	2.000000			
Roll constraint allows 180D rotation	N	N			
SIM focus pos (mm)	-0.782348	-0.7809083437167272			
SIM defocus (mm)	0	0.001439871863259334			
SIM translation stage pos (mm)	-233.592463	-233.5874344608287			
SIM translation stage offset (mm)	0	-0.005018542100998502			
Observation start time	111817394.184000	111817018.1897			
Observation start date	2001-07-18T04:22:10	2001-07-18T04:16:58			
Observation end time	111829394.184000	111829528.31519			
Observation end date	2001-07-18T07:42:10	2001-07-18T07:45:28			
Read mode	TIMED	TIMED			

2.3 Aspect



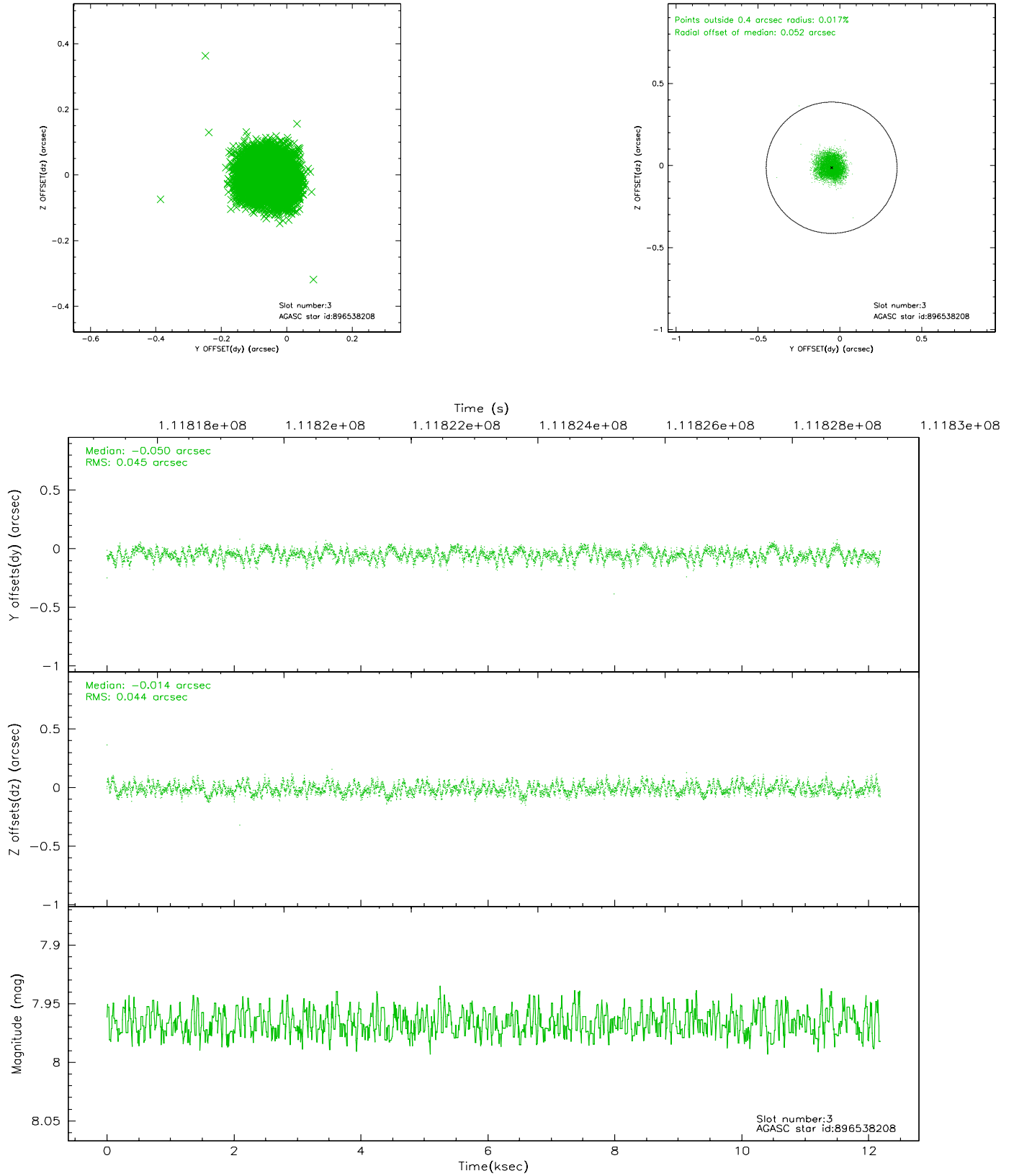


Slot Statistics

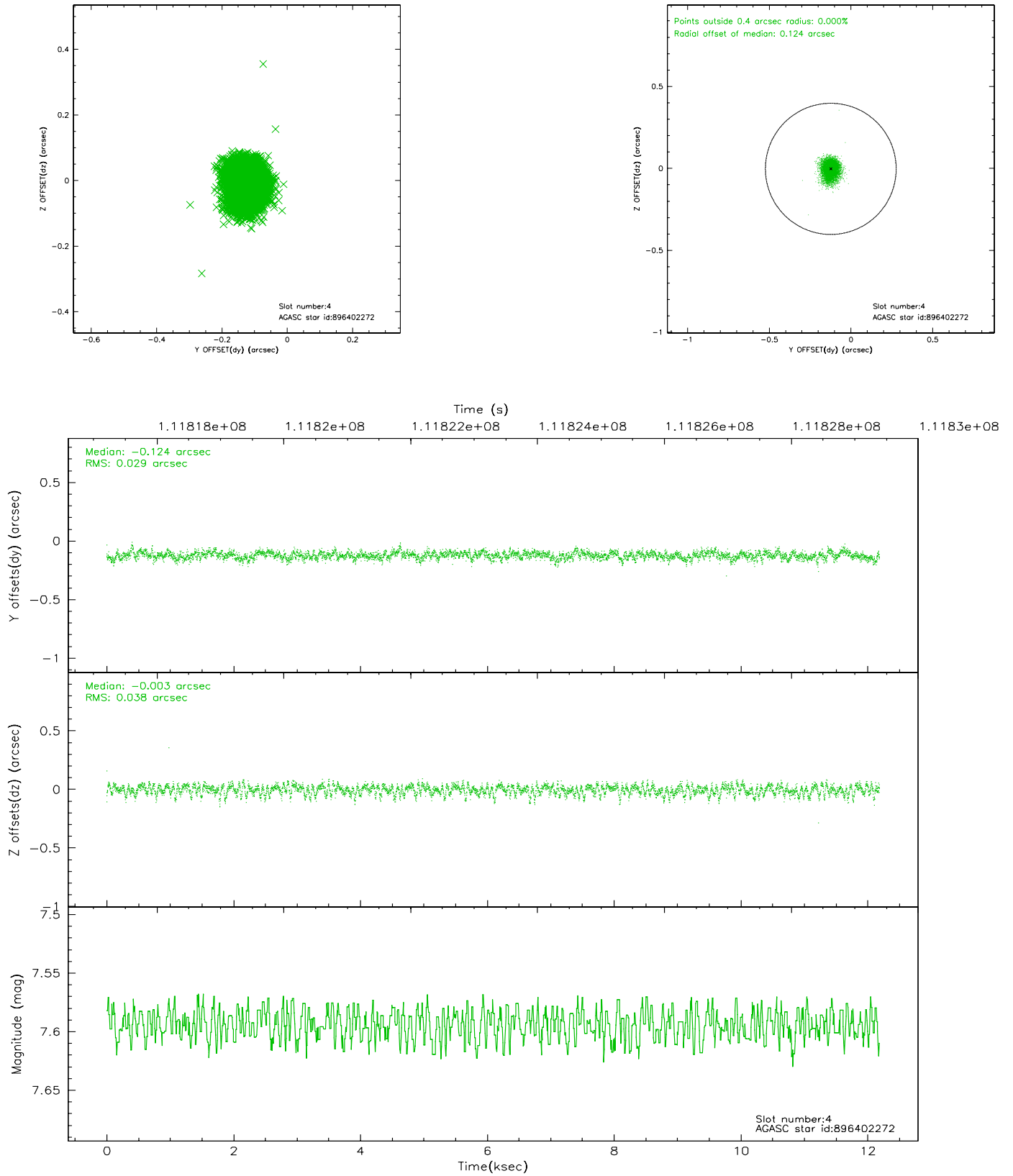
slot	status	id	mag	n_pts	med_dy	med_dz	dr1	dr2	ra	dec	mean_y	mean_z
0	FID	ACIS-I-2	7.15	2973	-0.015	-0.026	0.009	0.014	0.000000	0.000000	-755.82	-835.03
1	FID	ACIS-I-4	7.19	2973	-0.071	0.025	0.006	0.010	0.000000	0.000000	2157.97	1071.02
2	FID	ACIS-I-5	7.23	2973	-0.015	0.069	0.009	0.014	0.000000	0.000000	-1809.14	1069.34
3	GUIDE	896538208	7.97	5946	-0.050	-0.014	0.068	0.104	267.176969	-28.671626	219.03	2152.87
4	GUIDE	896402272	7.59	5945	-0.124	-0.003	0.049	0.084	265.637294	-28.313189	-2175.77	-2281.00
5	GUIDE	896537176	8.02	5945	0.099	-0.120	0.053	0.084	266.498272	-28.678259	-267.22	64.41
6	GUIDE	896540808	7.52	5944	0.007	0.146	0.049	0.079	265.985401	-29.308604	1564.25	-2033.58
7	GUIDE	896535464	9.33	5939	0.071	-0.007	0.091	0.146	266.962550	-28.408631	-862.23	1720.84

2.4 Star Slots

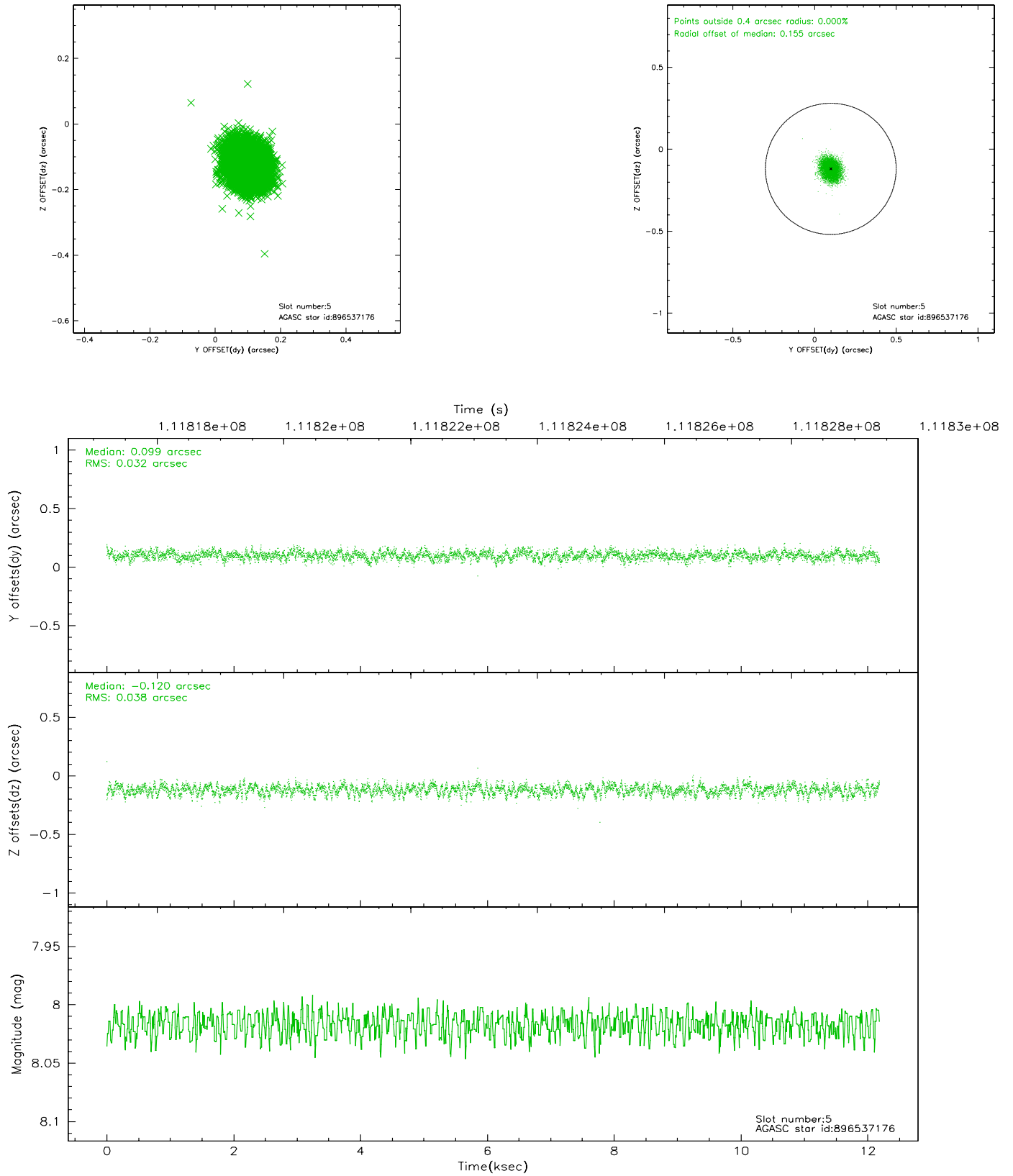
2.4.1 Slot 3



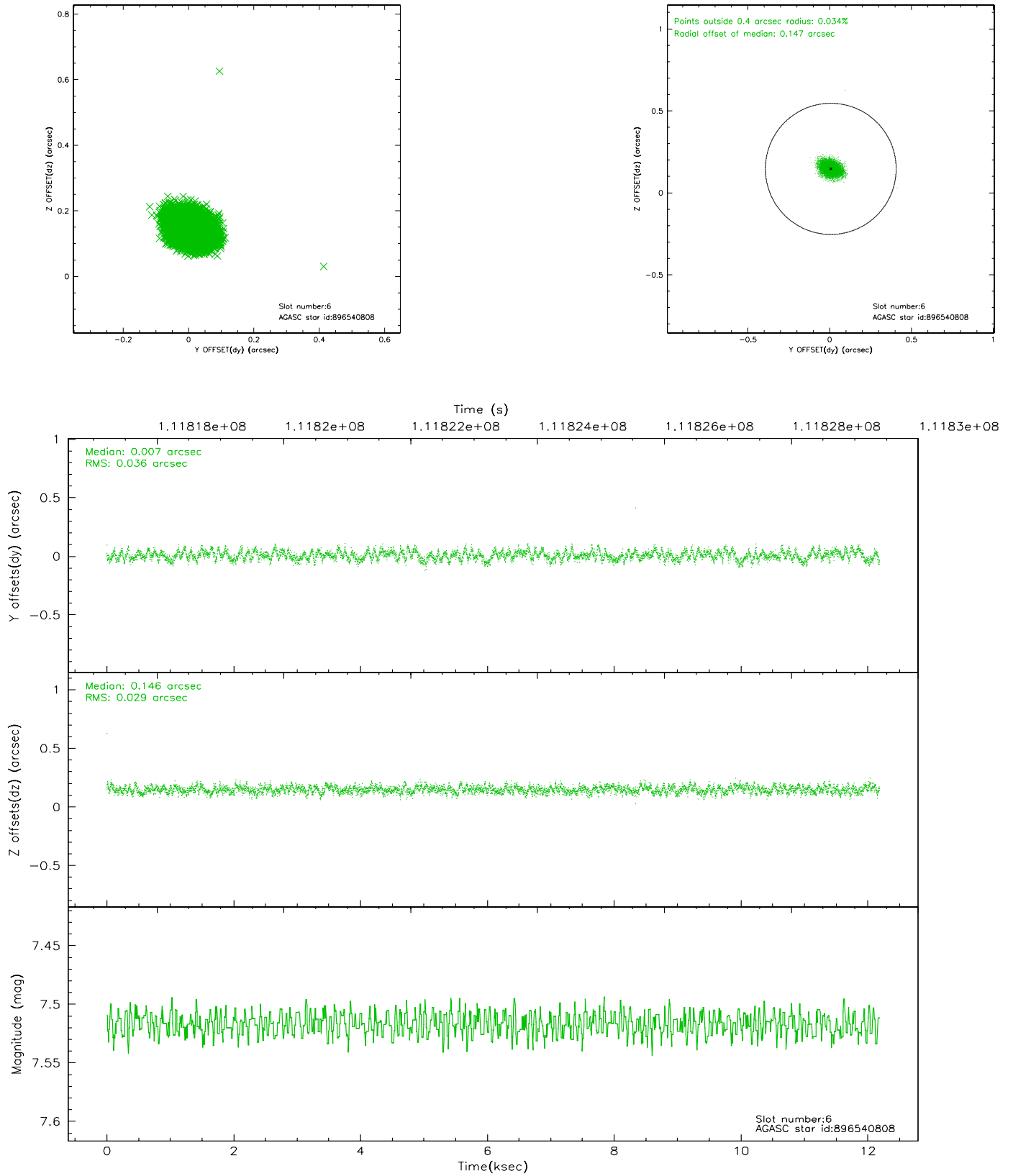
2.4.2 Slot 4



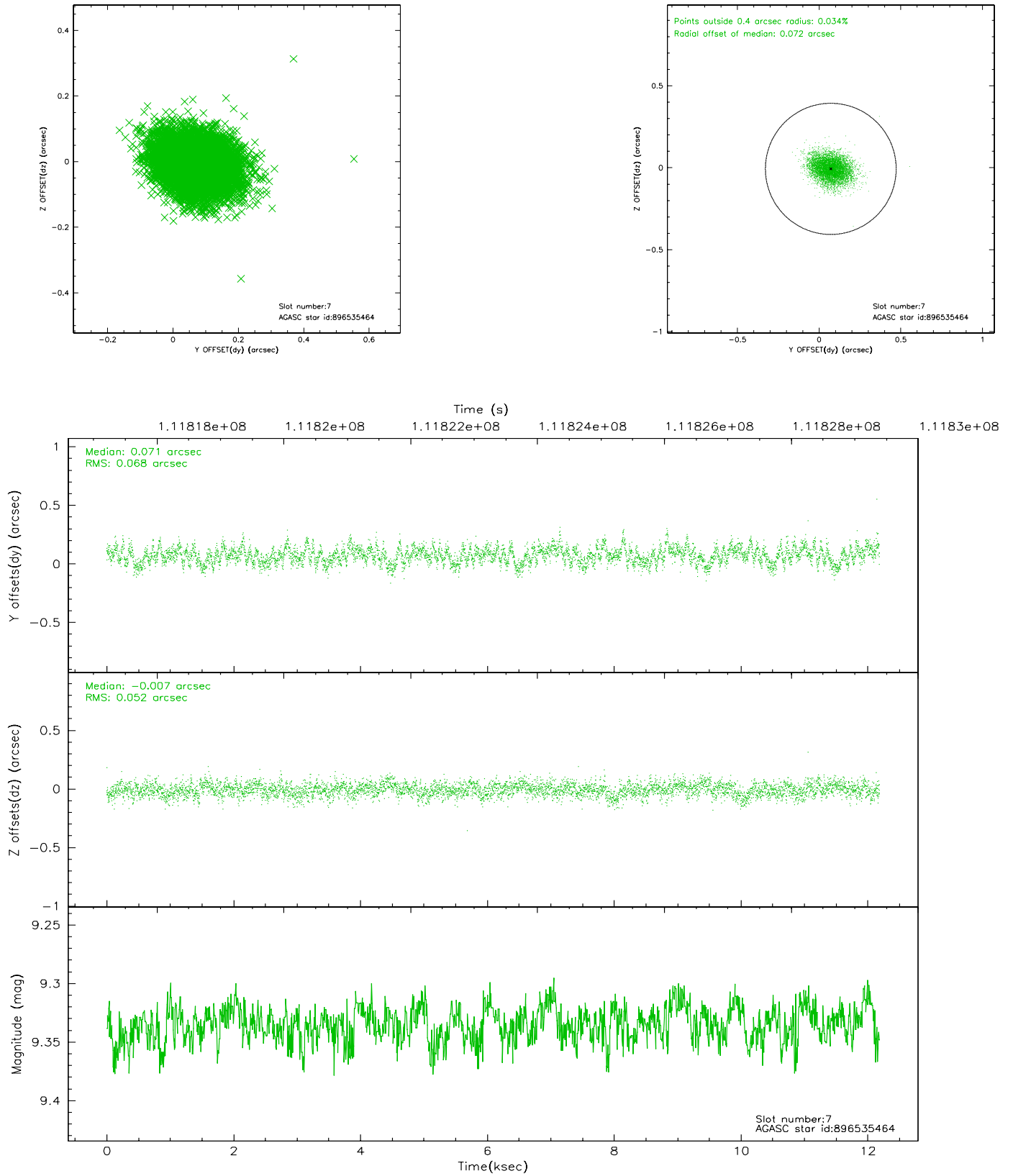
2.4.3 Slot 5



2.4.4 Slot 6

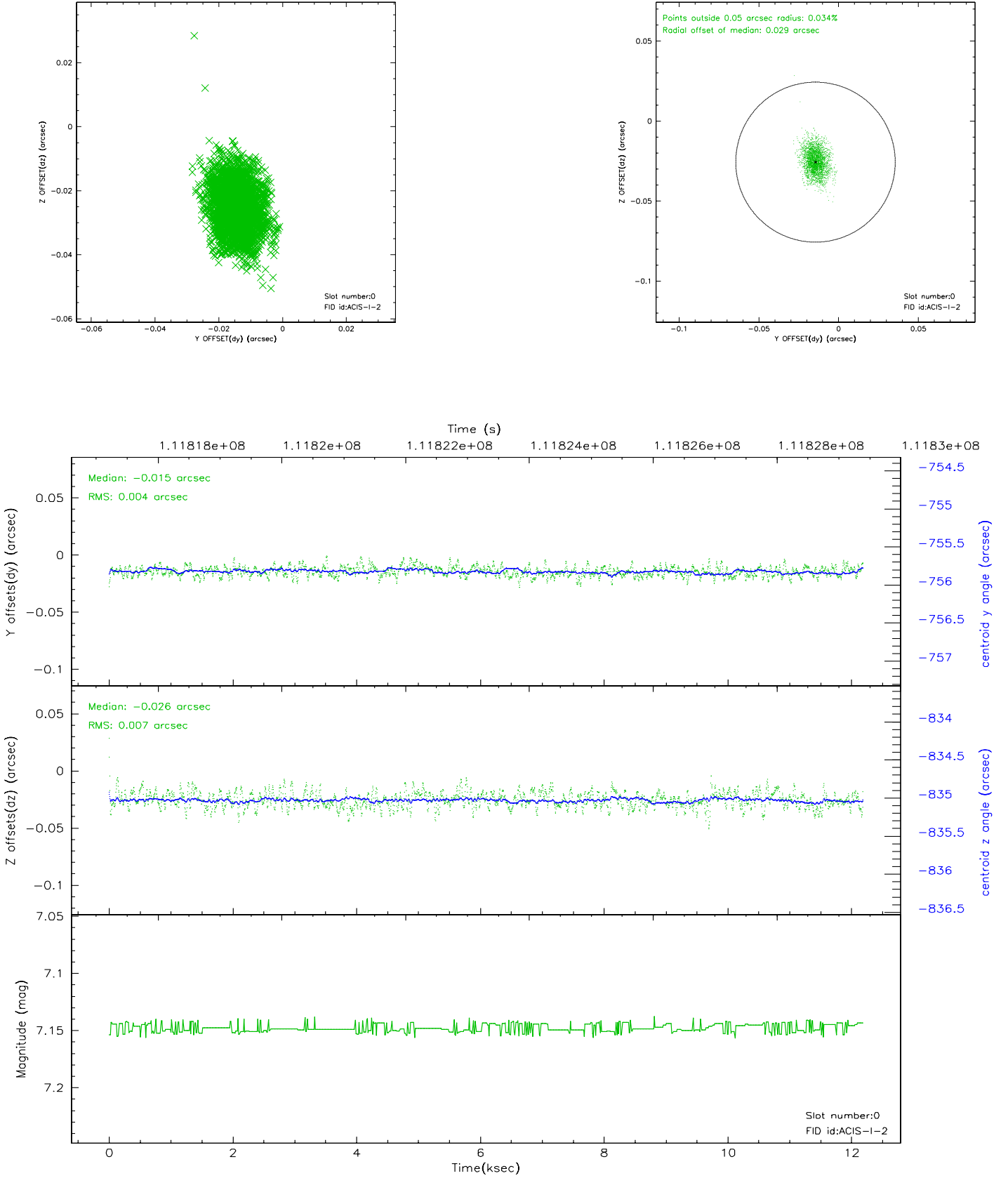


2.4.5 Slot 7

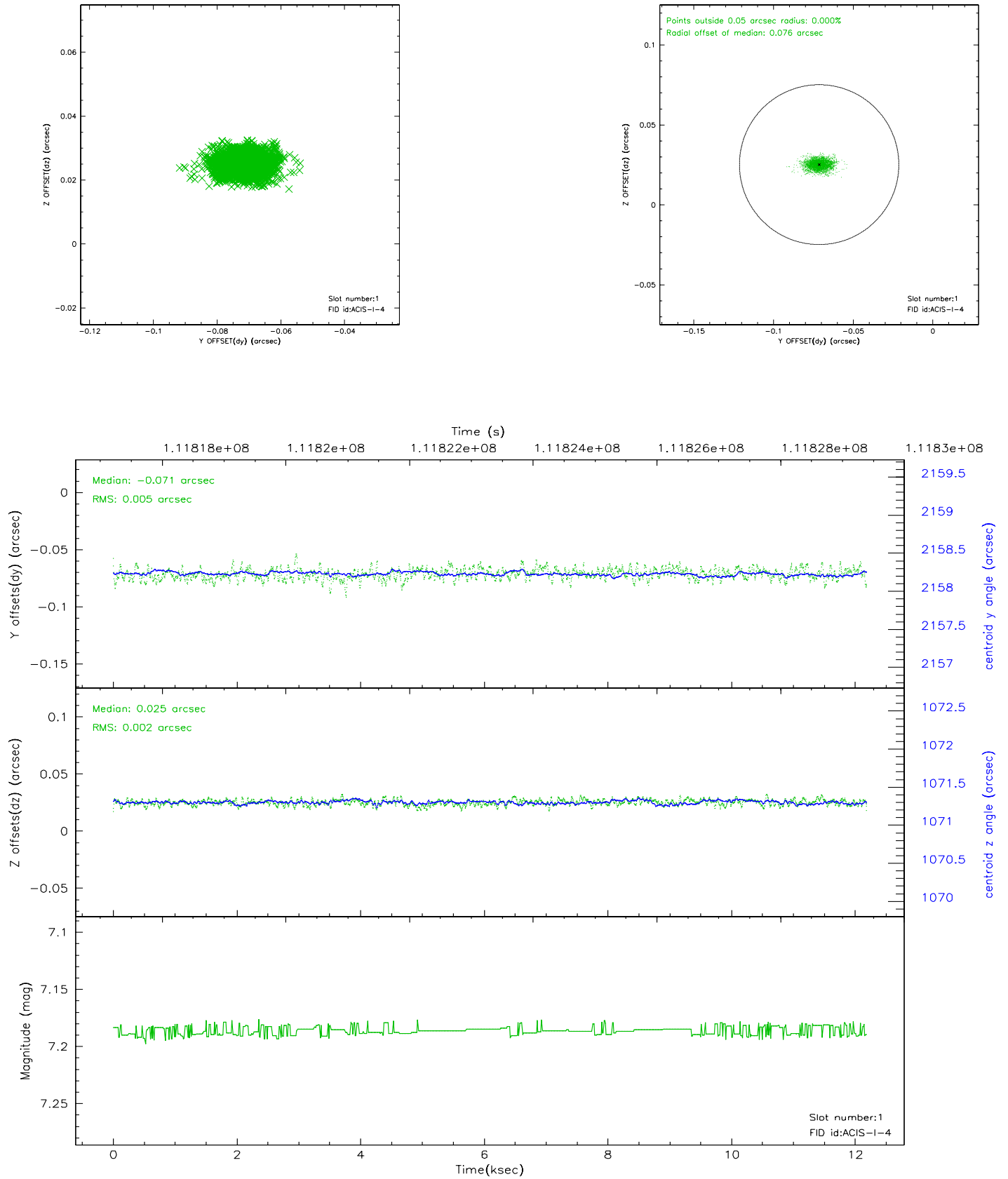


2.5 FID Slots

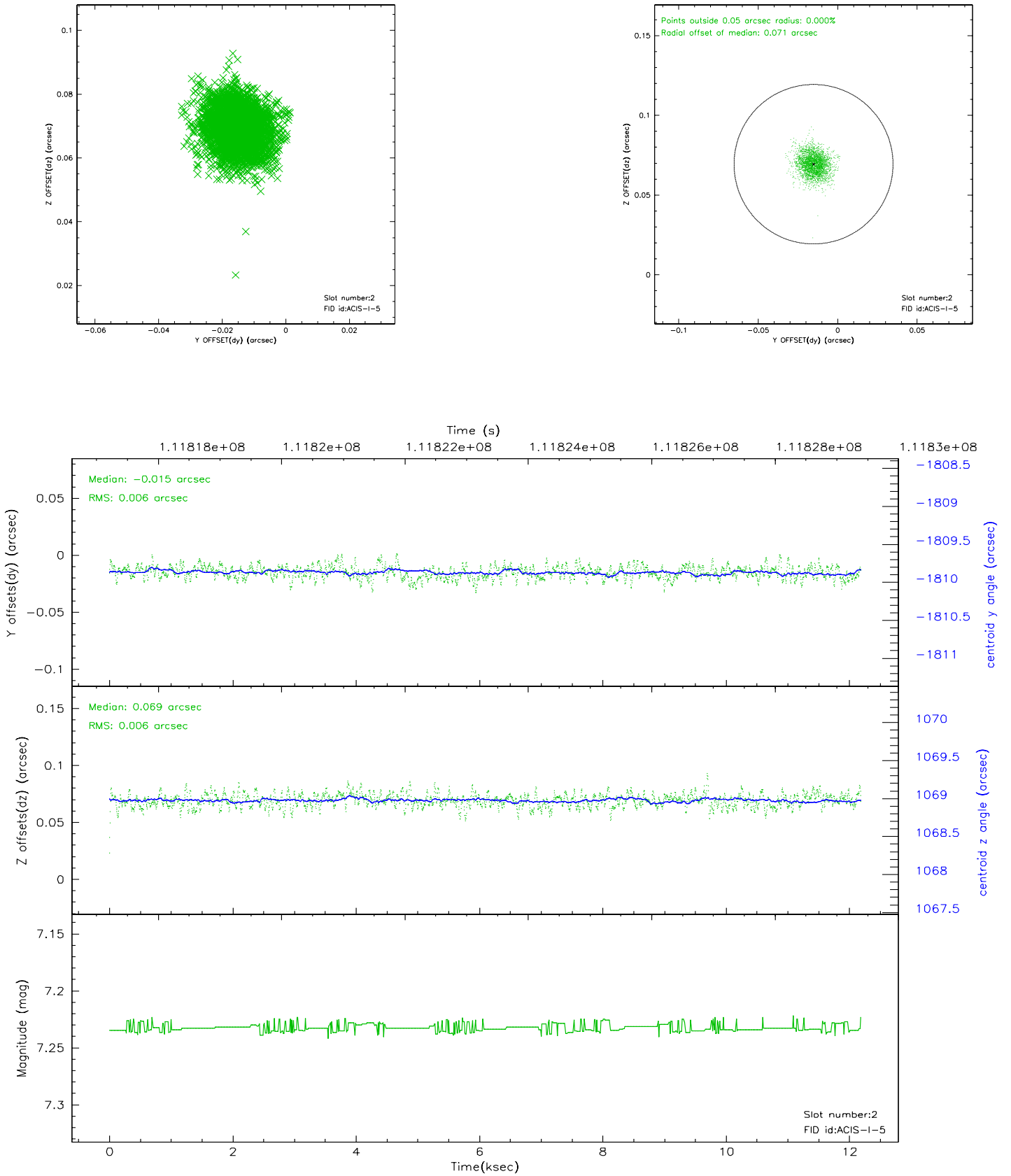
2.5.1 Slot 0



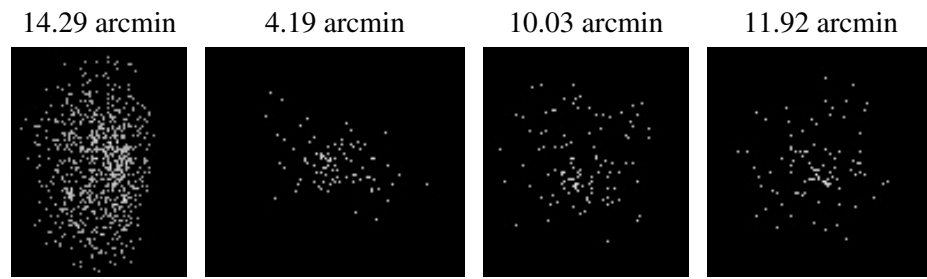
2.5.2 Slot 1



2.5.3 Slot 2



3 Point Sources



A Summary

A.1 Status

V&V Scientist	Jen Lauer
V&V Date (YYYY-MM-DD)	2006.12.14
V&V Edition	1
V&V Disposition and Status	OK
V&V Charge Time	11.8

A.2 Comments

Roll constraint met.