

# V&V Reference Report

## L2 ASCDS Version : 8.4.5

Observation 2275 - L2 Version 3  
Chandra X-Ray Center

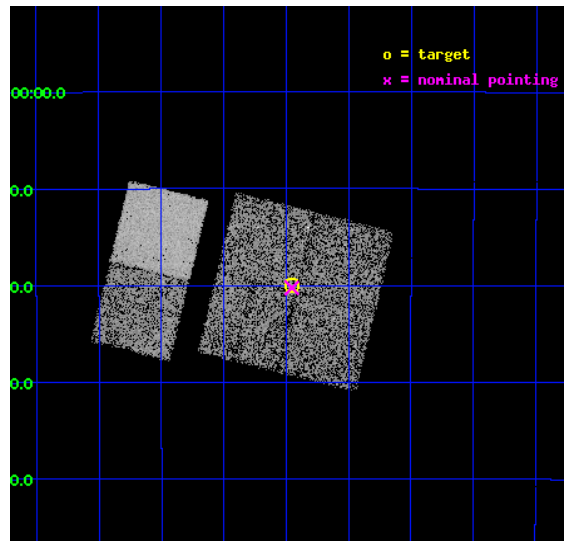
L2 Processing Date : Sep 20 2012

## Contents

<b>1</b>	<b>Front</b>	<b>2</b>
<b>2</b>	<b>OBI</b>	<b>3</b>
2.1	OBI . . . . .	3
2.1.1	Images . . . . .	3
2.1.2	Bias . . . . .	3
2.1.3	Parameters . . . . .	4
2.1.4	Events . . . . .	4
2.2	Compared Parameters . . . . .	5
2.3	Aspect . . . . .	6
2.4	Star Slots . . . . .	9
2.4.1	Slot 3 . . . . .	9
2.4.2	Slot 4 . . . . .	10
2.4.3	Slot 5 . . . . .	11
2.4.4	Slot 6 . . . . .	12
2.4.5	Slot 7 . . . . .	13
2.5	FID Slots . . . . .	14
2.5.1	Slot 0 . . . . .	14
2.5.2	Slot 1 . . . . .	15
2.5.3	Slot 2 . . . . .	16
<b>A</b>	<b>Summary</b>	<b>17</b>
A.1	Status . . . . .	17
A.2	Comments . . . . .	17

# 1 Front

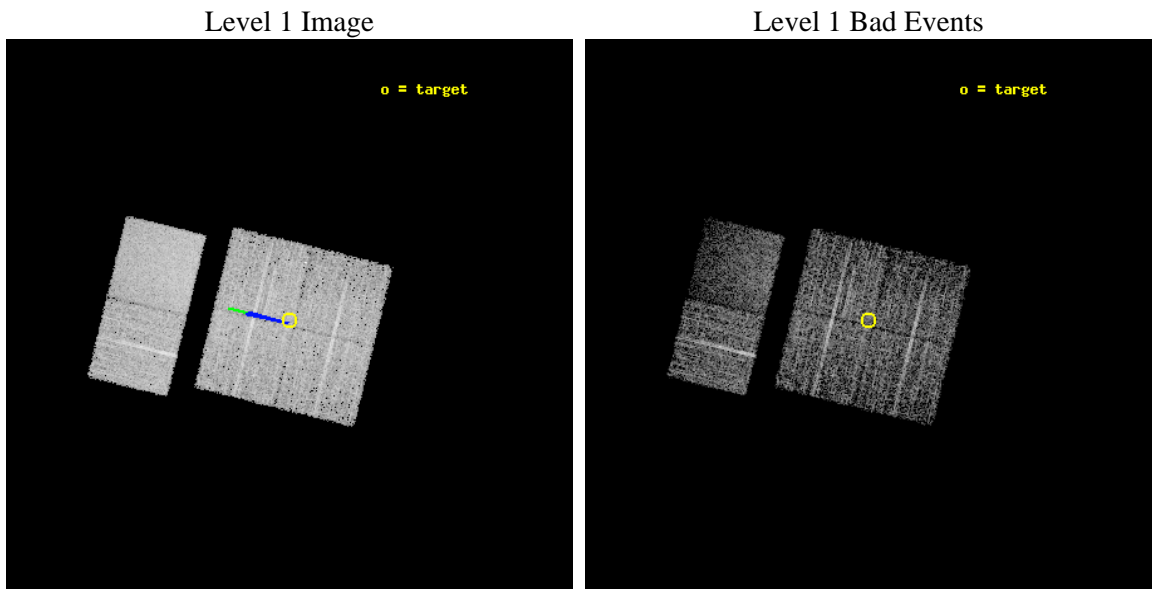
seq_num	900102	Sequence number
obs_id	2275	Observation id
title	CHANDRA SURVEY OF THE GALACTIC RIDGE AROUND THE MILKY WAY CENTER	P
observer	Prof. Q. Daniel Wang	Principal investigator
object	GCS 24	Source name
dtcycle	0	&#160
cycle	P	events from which exps? Prim/Second/Both
ra_targ	265.8644	Observer's specified target RA [deg]
dec_targ	-29.3328	Observer's specified target Dec [deg]
ra_nom	265.86351903328	Nominal RA [deg]
dec_nom	-29.337491589986	Nominal Dec [deg]
roll_nom	283.8072619048	Nominal Roll [deg]
revision	3	Processing version of data
ontime	11743.795109779	Sum of GTIs [s]
livetime	11595.088104834	Livetime [s]
ontime0	11750.277090207	Sum of GTIs [s]
ontime1	11740.554149449	Sum of GTIs [s]
ontime2	11734.072149158	Sum of GTIs [s]
ontime3	11743.795109779	Sum of GTIs [s]
ontime6	11734.072198868	Sum of GTIs [s]
ontime7	11753.518070355	Sum of GTIs [s]
l2events	47663	Number of level 2 events



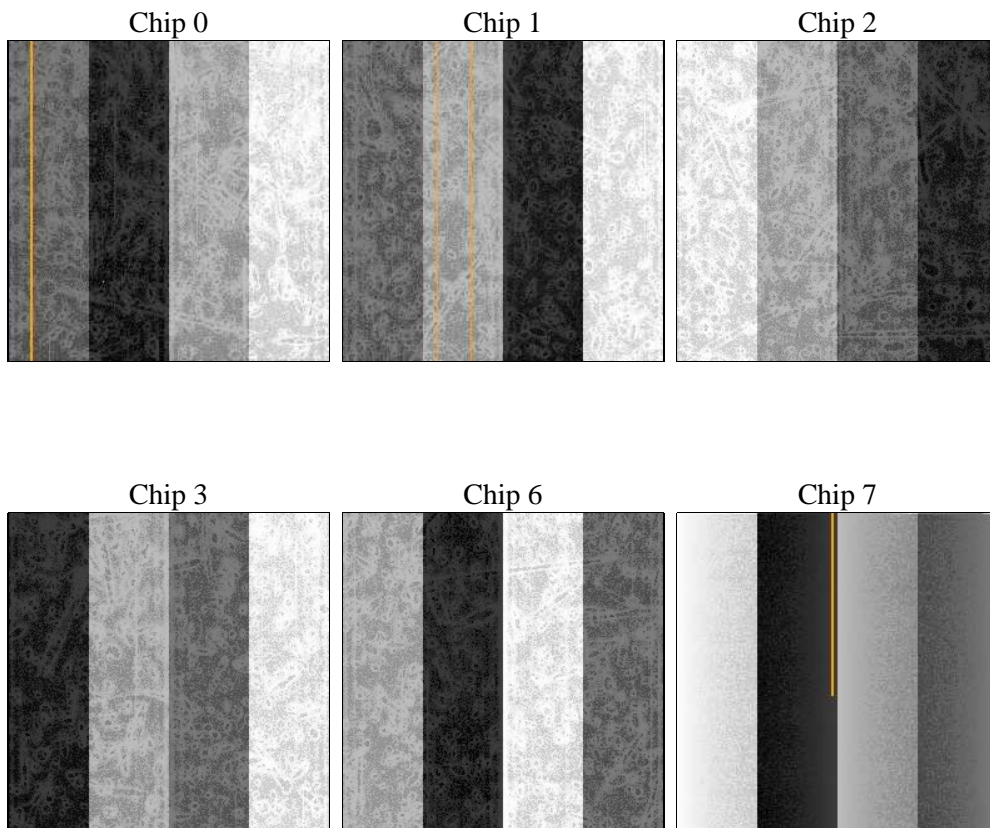
## 2 OBI

### 2.1 OBI

#### 2.1.1 Images



#### 2.1.2 Bias



### 2.1.3 Parameters

obi_num	0	Obi number	sched_exp_time	12000.000000	[s] Scheduled observation exposure time
ascdsver	8.4.5	Processing system revision	ontime	11743.795109779	Sum of GTIs [s]
caldsver	4.5.1.1	&#160	ontime0	11750.277090207	Sum of GTIs [s]
date	2012-09-20T19:22:55	Date and time of file creation	ontime1	11740.554149449	Sum of GTIs [s]
revision	3	Processing version of data	ontime2	11734.072149158	Sum of GTIs [s]
			ontime3	11743.795109779	Sum of GTIs [s]
			ontime6	11734.072198868	Sum of GTIs [s]
			ontime7	11753.518070355	Sum of GTIs [s]
			l1events	194117	Number of level 1 events

### 2.1.4 Events

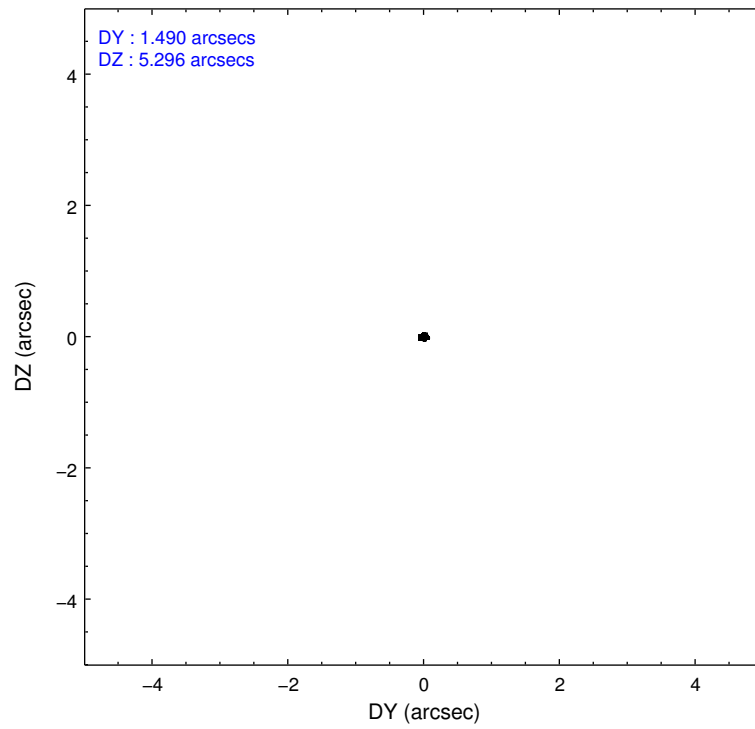
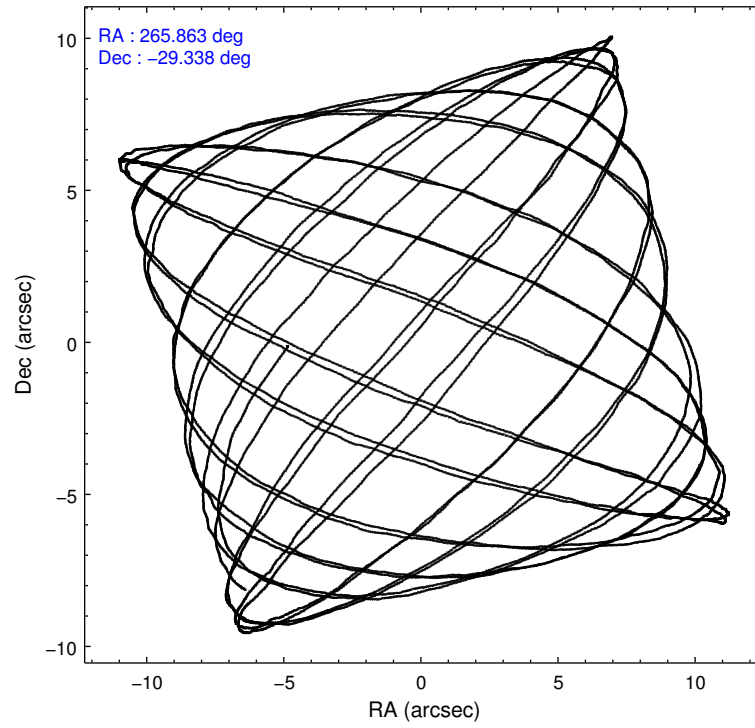
	ccd 0	ccd 1	ccd 2	ccd 3	ccd 6	ccd 7		ccd 0	ccd 1	ccd 2	ccd 3	ccd 6	ccd 7
level 1 events	28386	27607	31912	32084	34372	39756	grade 0 events	2484	2509	2844	2879	3079	2314
rejected events	22997	22098	26150	26143	27842	18148		8%	9%	8%	8%	8%	5%
rejected %	81%	80%	81%	81%	81%	45%	grade 1 events	30	26	23	35	36	46
								0%	0%	0%	0%	0%	0%
							grade 2 events	1106	1060	1149	1143	1300	4516
								3%	3%	3%	3%	3%	11%
							grade 3 events	499	490	462	509	563	2023
								1%	1%	1%	1%	1%	5%
							grade 4 events	449	503	459	485	523	2022
								1%	1%	1%	1%	1%	5%
							grade 5 events	1246	1313	1133	1384	1435	4350
								4%	4%	3%	4%	4%	10%
							grade 6 events	851	953	862	926	1070	10733
								2%	3%	2%	2%	3%	26%
							grade 7 events	21721	20753	24980	24723	26366	13752
								76%	75%	78%	77%	76%	34%

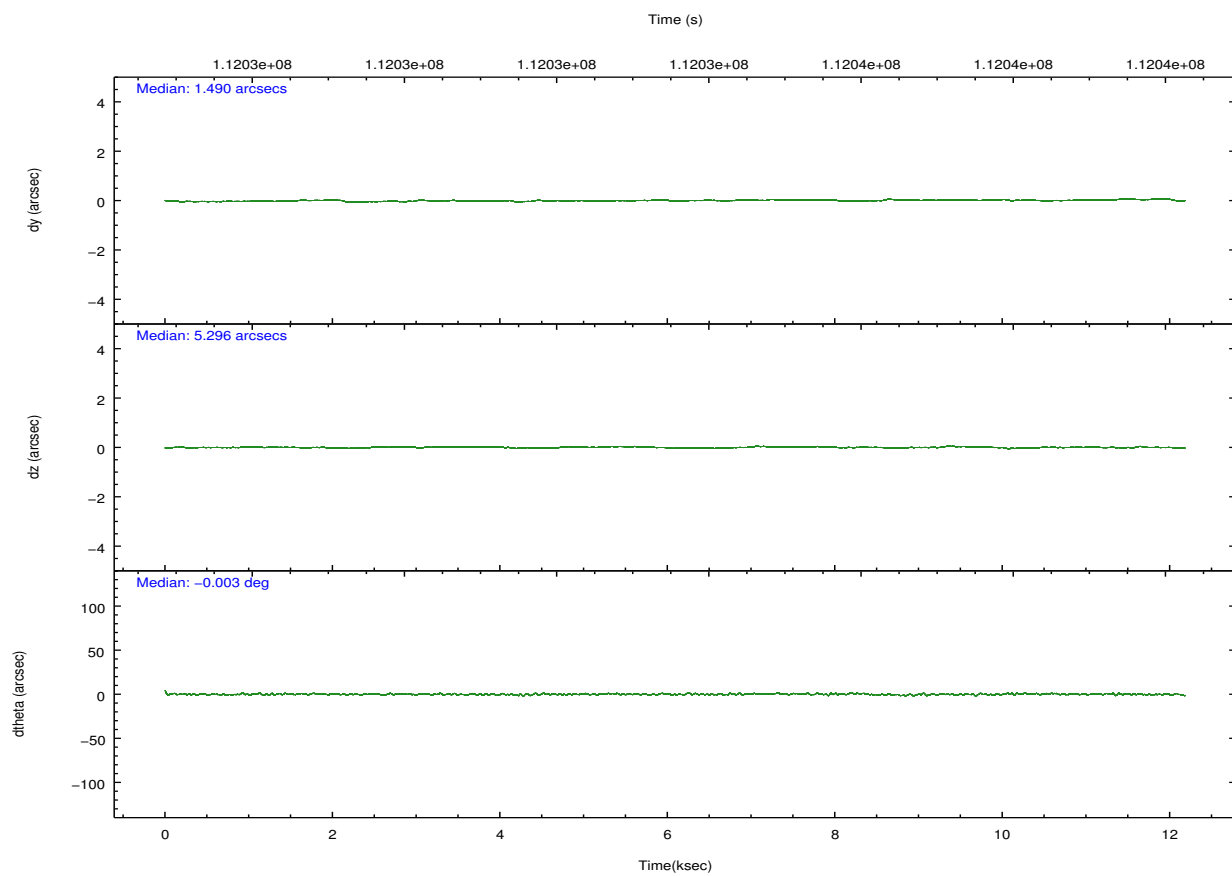
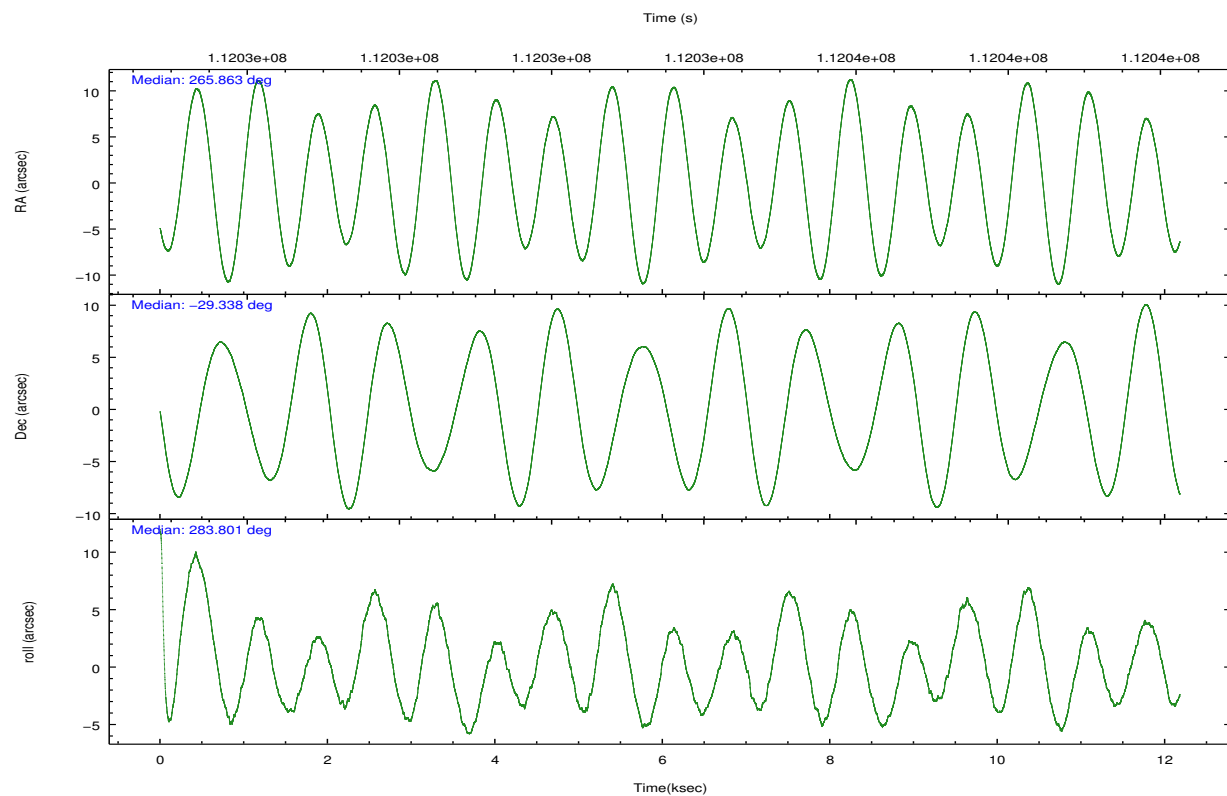


## 2.2 Compared Parameters

Parameter	Planned	Actual	Parameter	Planned	Actual
Instrument	ACIS	ACIS	Obspar format version number	7	7
Detector	ACIS-012367	ACIS-012367	Obspar file type	PREDICTED	ACTUAL
Grating	NONE	NONE	Obspar update status	NONE	UPDATED
Data mode	FAINT	FAINT	Number of optional ACIS chips dropped	0	0
Observation mode	POINTING	POINTING	On-chip summing requested	N	N
[deg] Pointing RA	265.841722	265.8635190332842	Subarray requested	NONE	NONE
[deg] Pointing Dec	-29.317694	-29.33749158998649	Alternating exposures requested	N	N
[deg] Pointing Roll	283.587895	283.8072619047965	[s] Primary exposure time	0.000000	3.2
[deg] Roll angle	283.600000	283.600000			
[deg] Roll tolerance	2.000000	2.000000			
Roll constraint allows 180D rotation	N	N			
[mm] SIM focus pos	-0.782348	-0.7809083437167272			
[mm] SIM defocus	0	0.001439871863259334			
[mm] SIM translation stage pos	-233.592463	-233.5874344608287			
[mm] SIM translation stage offset	0	-0.005018542100998502			
[s] Observation start time (MET)	112027646.184000	112027270.29793			
Observation start date	2001-07-20T14:46:22	2001-07-20T14:41:10			
[s] Observation end time (MET)	112039646.184000	112039780.42342			
Observation end date	2001-07-20T18:06:22	2001-07-20T18:09:40			
Read mode	TIMED	TIMED			

## 2.3 Aspect



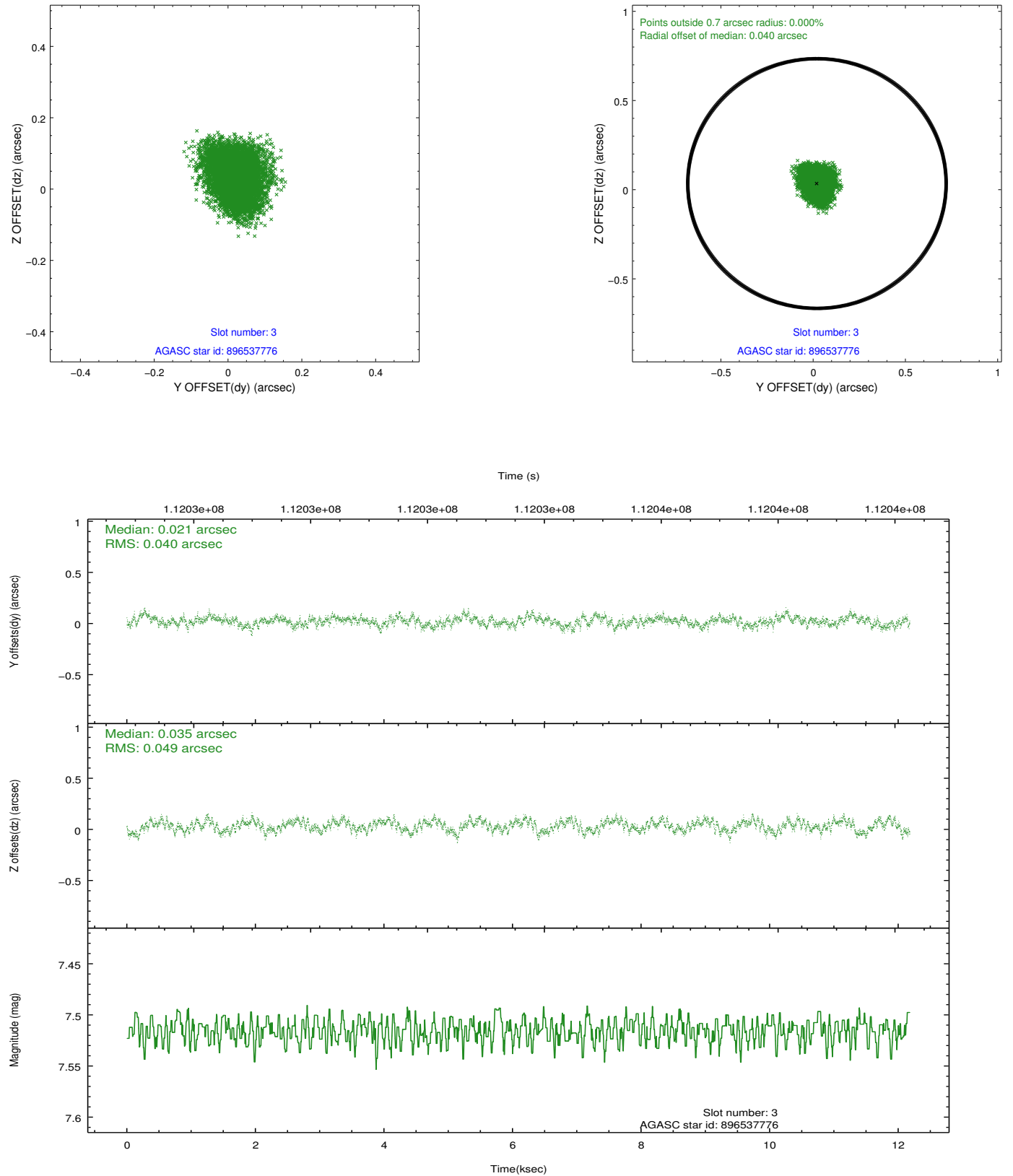


### Slot Statistics

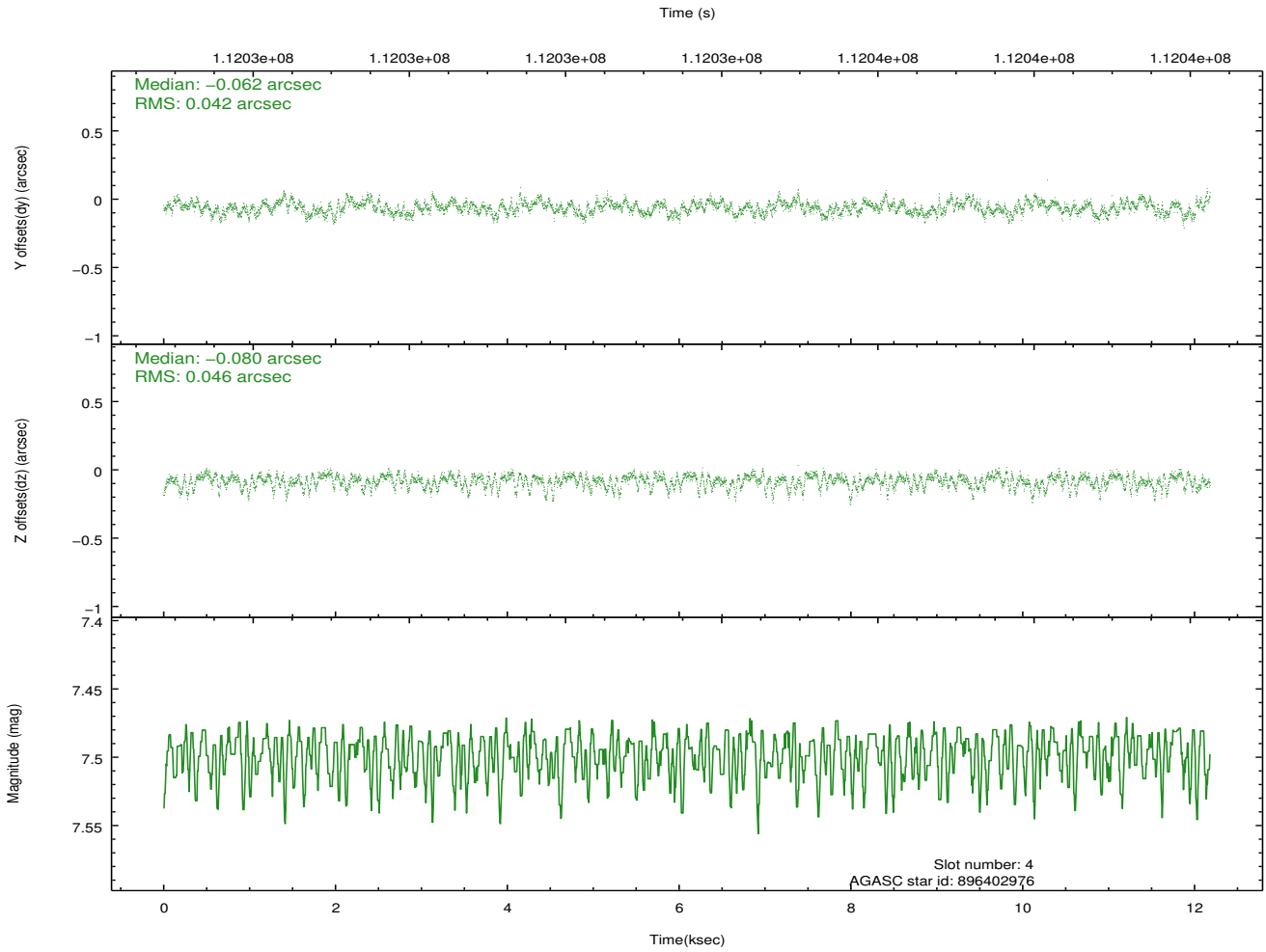
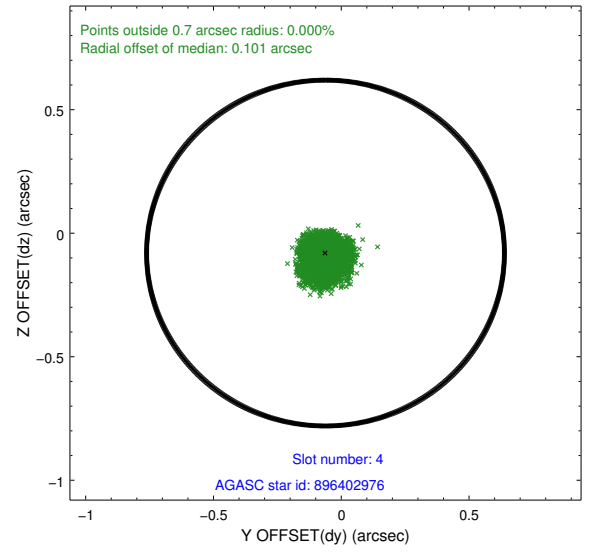
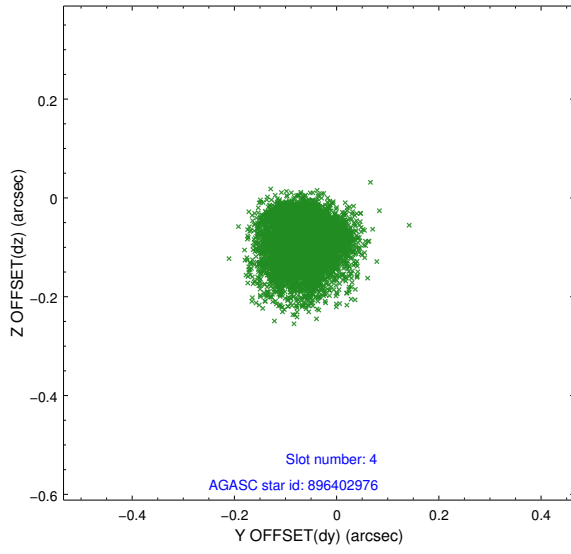
slot	status	id	mag	n_pts	med_dy	med_dz	dr1	dr2	ra	dec	mean_y	mean_z
0	FID	ACIS-I-2	7.15	2964	-0.025	-0.048	0.008	0.015	0.000000	0.000000	-755.84	-835.07
1	FID	ACIS-I-4	7.19	2950	-0.031	0.036	0.006	0.010	0.000000	0.000000	2158.00	1071.02
2	FID	ACIS-I-5	7.23	2953	-0.045	0.081	0.009	0.014	0.000000	0.000000	-1809.18	1069.34
3	GUIDE	896537776	7.52	5909	0.021	0.035	0.069	0.107	266.655684	-29.665673	1824.12	2179.47
4	GUIDE	896402976	7.50	5923	-0.062	-0.080	0.066	0.109	265.099474	-28.923203	-1922.51	-1940.76
5	GUIDE	896536320	8.98	5917	0.015	0.051	0.139	0.208	266.369048	-29.307026	354.51	1617.63
6	GUIDE	896405480	8.24	5930	-0.012	0.043	0.065	0.106	265.220460	-29.599691	535.03	-2128.92
7	GUIDE	896538920	8.91	5928	0.040	-0.038	0.064	0.107	266.278728	-29.143592	-284.17	1482.48

## 2.4 Star Slots

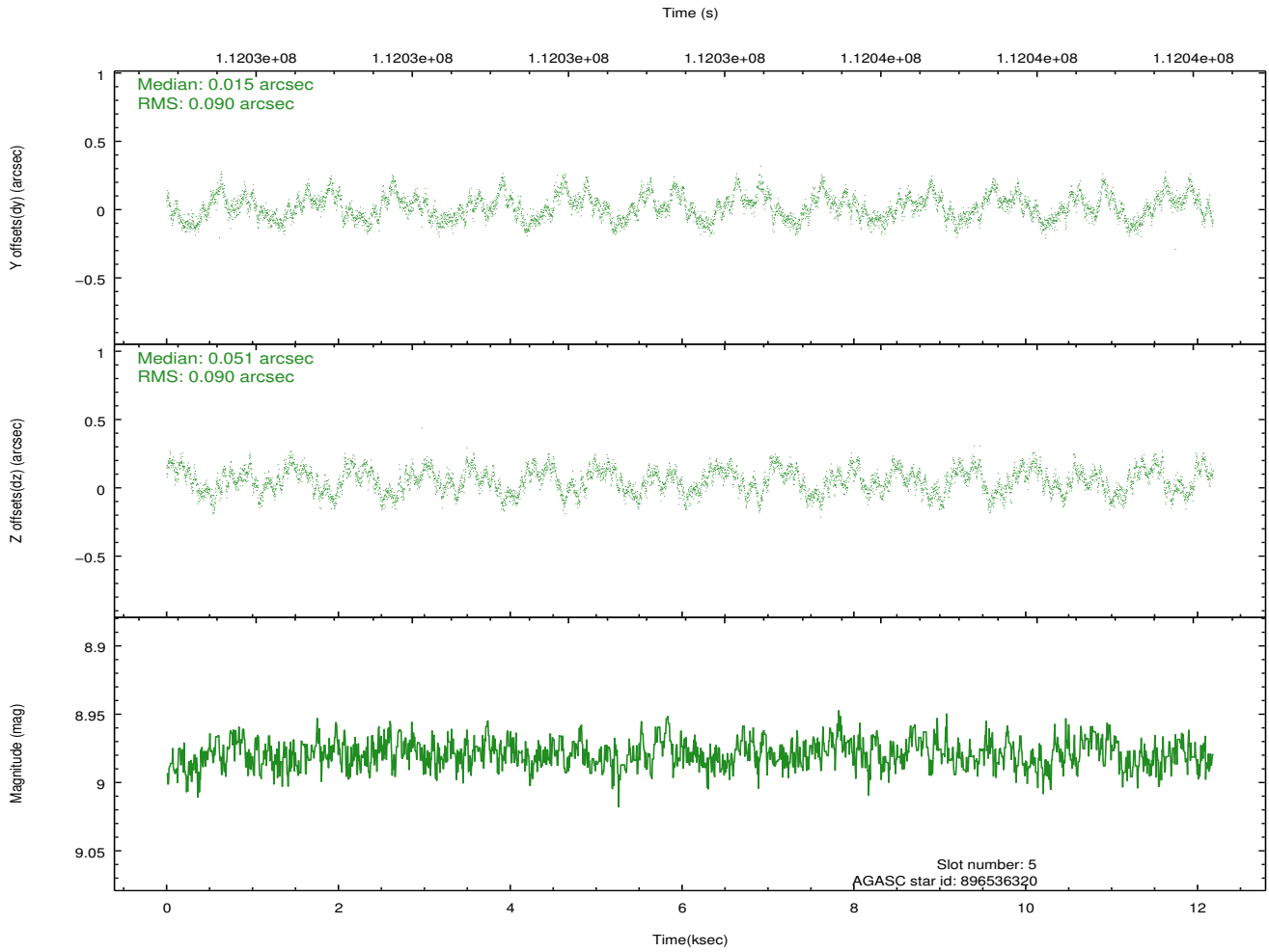
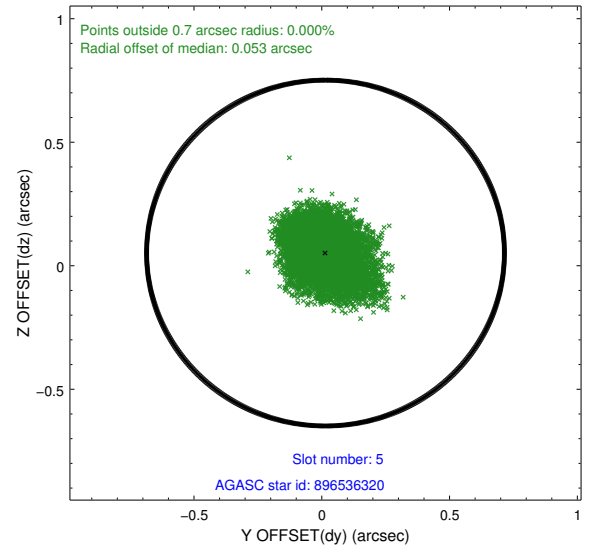
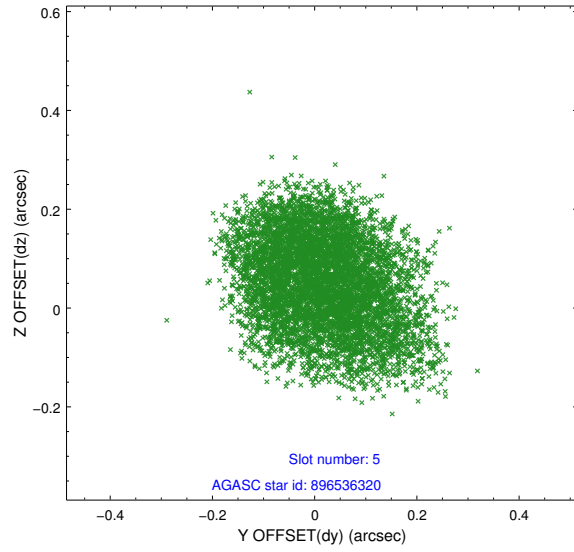
### 2.4.1 Slot 3



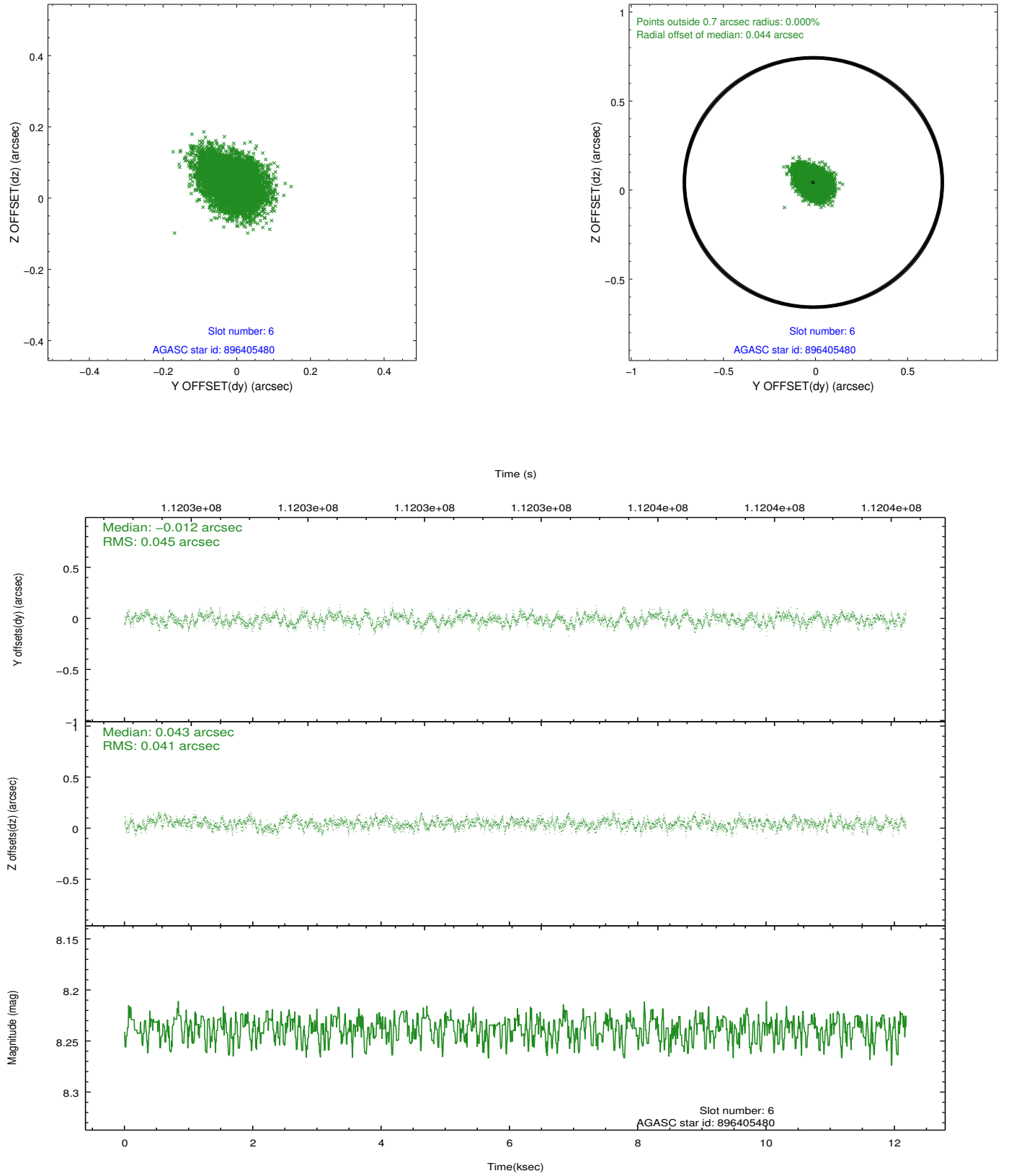
## 2.4.2 Slot 4



### 2.4.3 Slot 5

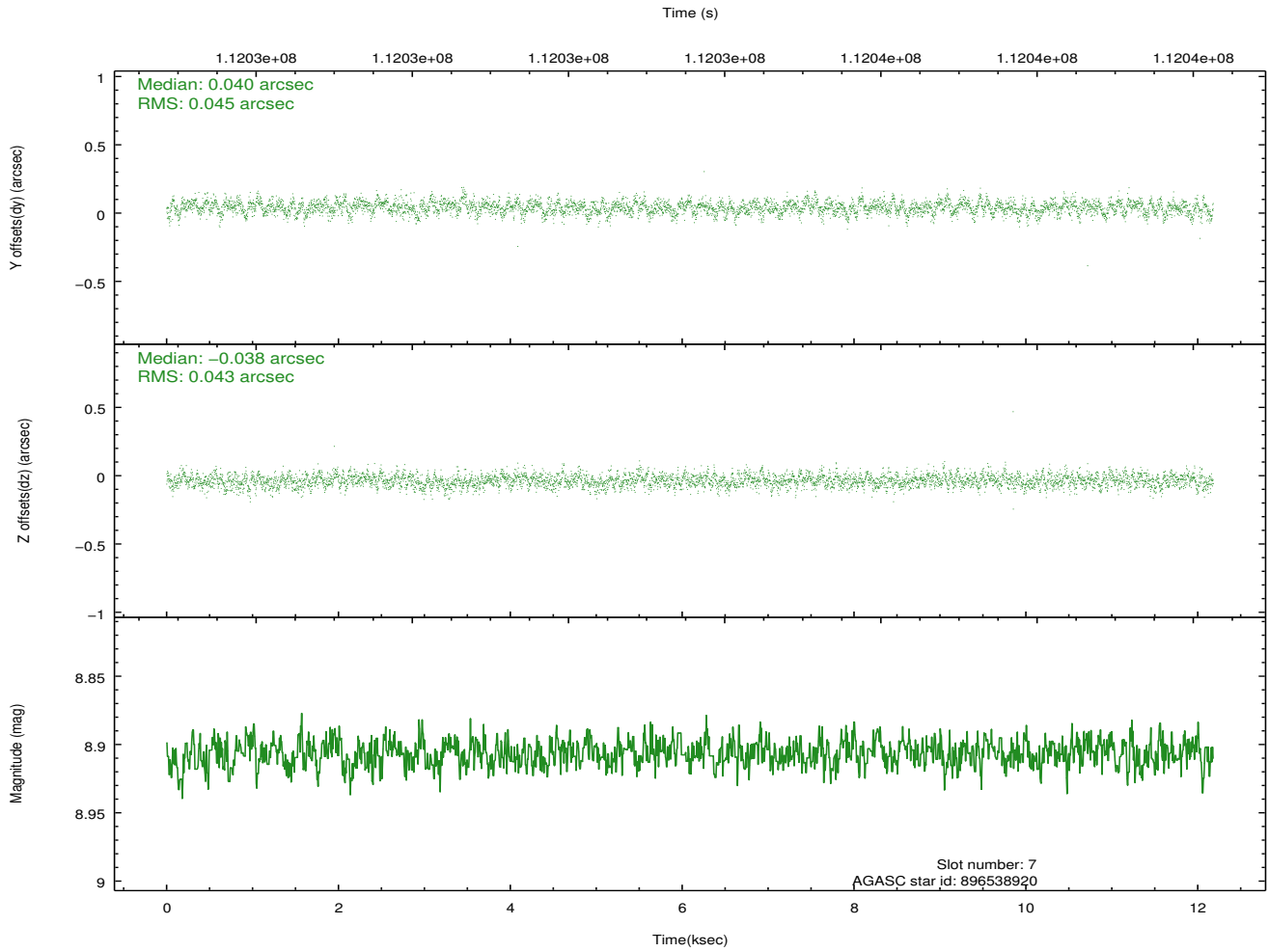
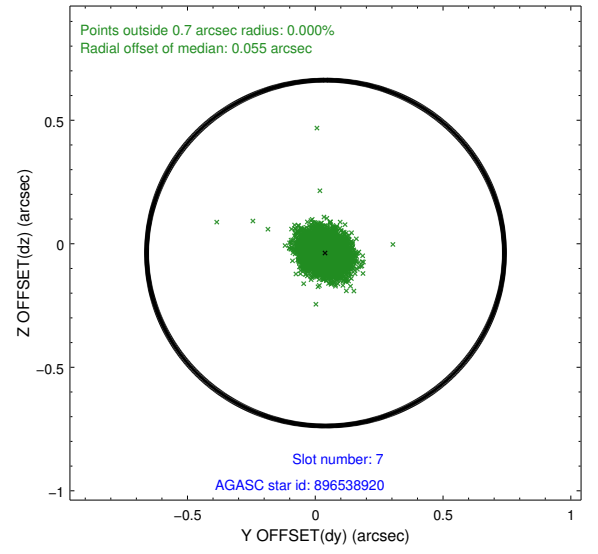
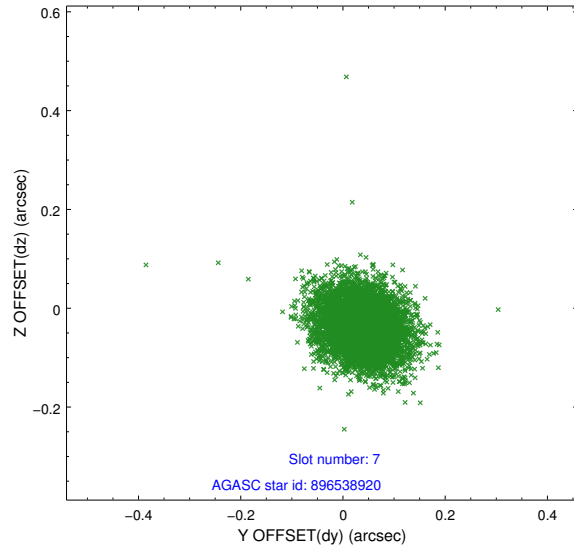


## 2.4.4 Slot 6



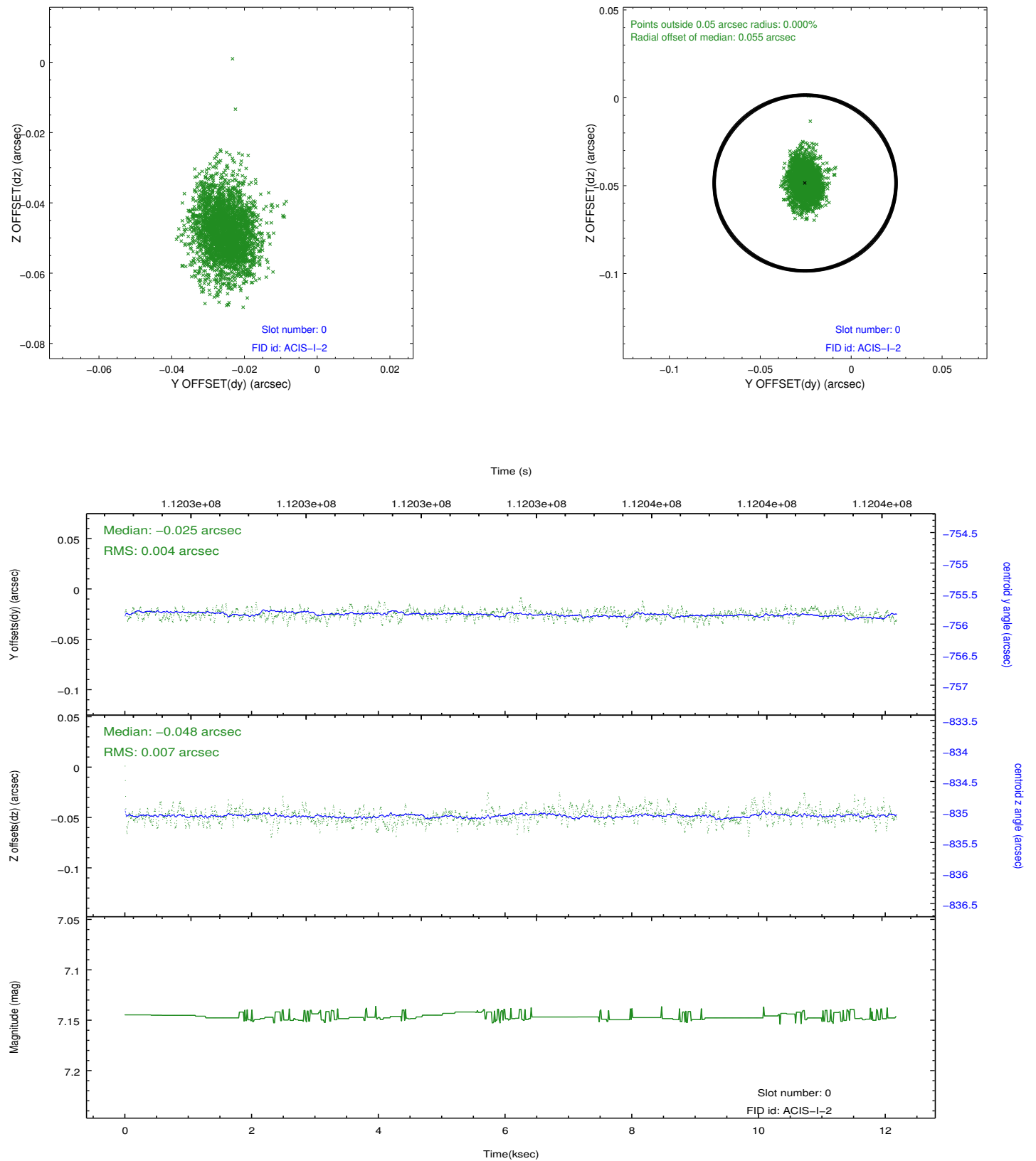


## 2.4.5 Slot 7

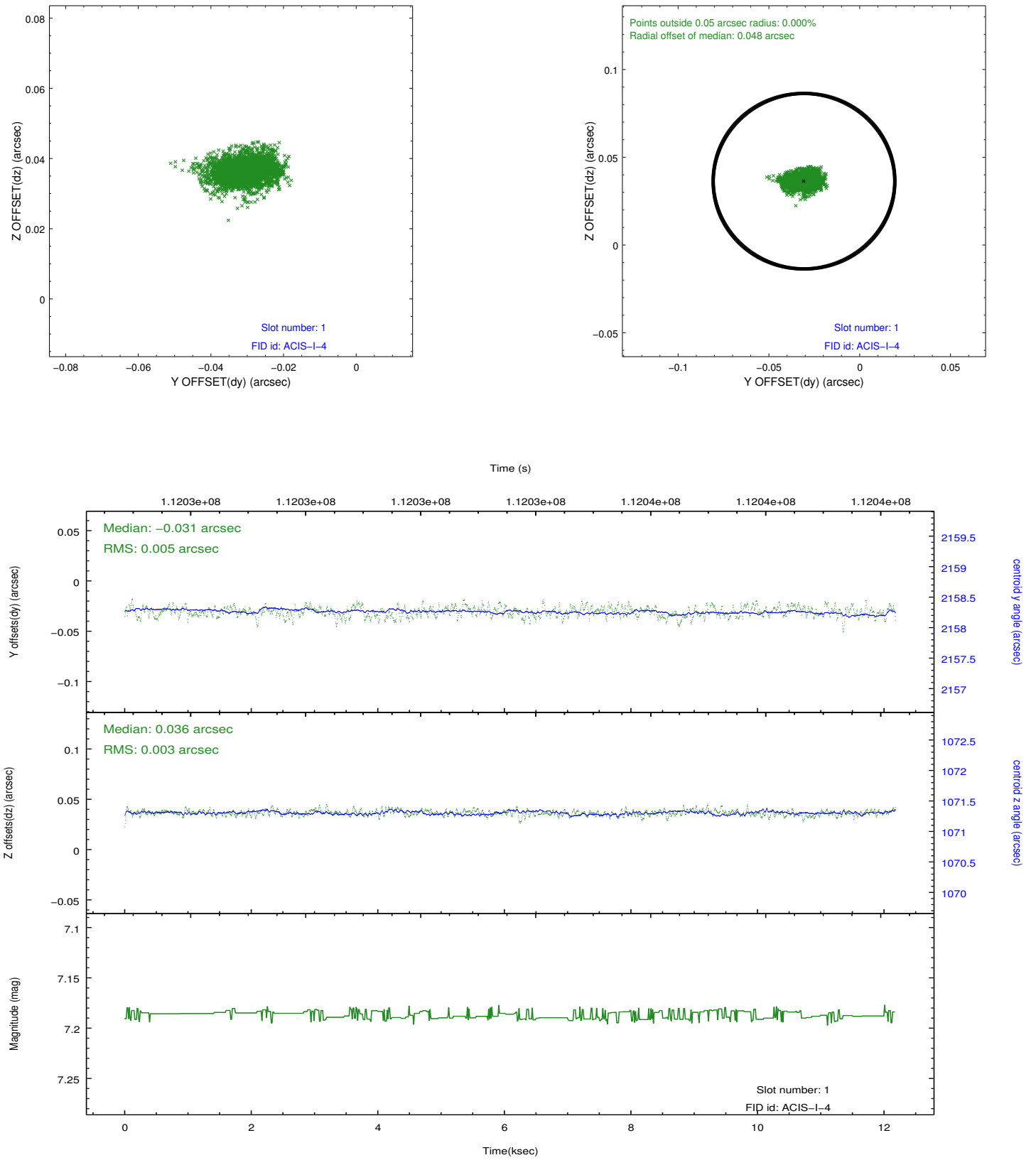


## 2.5 FID Slots

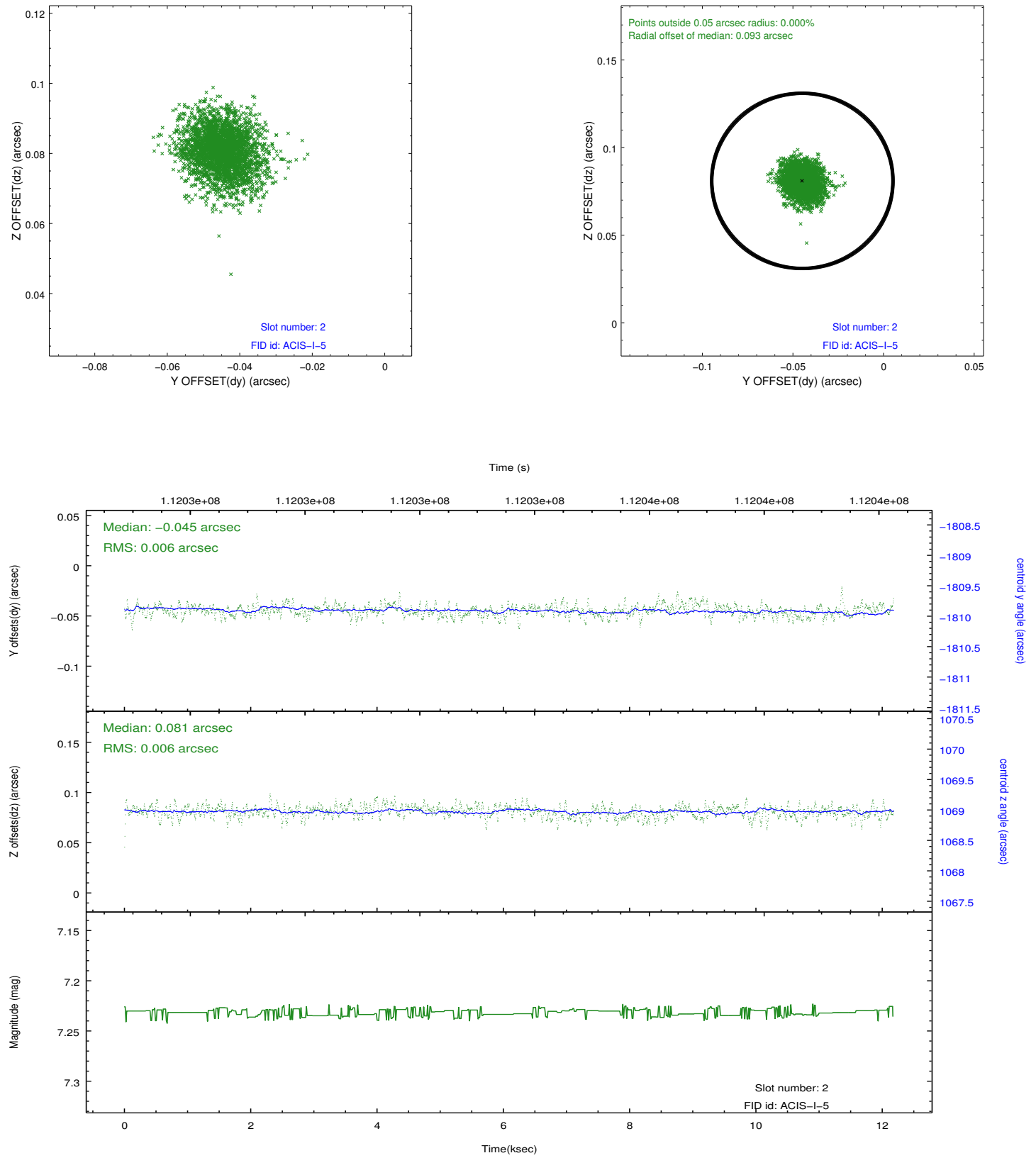
### 2.5.1 Slot 0



## 2.5.2 Slot 1



### 2.5.3 Slot 2



## A Summary

### A.1 Status

V&V Scientist	Jen Lauer
V&V Date (YYYY-MM-DD)	2012.09.24
V&V Edition	1
V&V Disposition and Status	OK
V&V Charge Time	11.746

### A.2 Comments

Roll constraint satisfied.