

V&V Reference Report

L2 ASCDS Version : 8.4.5

Observation 2274 - L2 Version 3
Chandra X-Ray Center

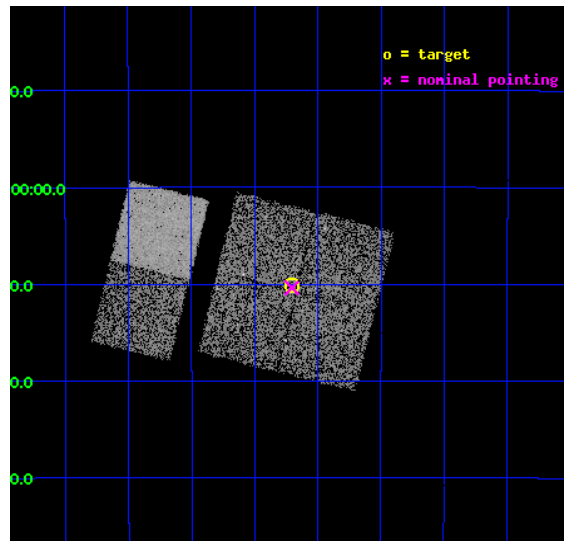
L2 Processing Date : Sep 20 2012

Contents

1	Front	2
2	OBI	3
2.1	OBI	3
2.1.1	Images	3
2.1.2	Bias	3
2.1.3	Parameters	4
2.1.4	Events	4
2.2	Compared Parameters	5
2.3	Aspect	6
2.4	Star Slots	9
2.4.1	Slot 3	9
2.4.2	Slot 4	10
2.4.3	Slot 5	11
2.4.4	Slot 6	12
2.4.5	Slot 7	13
2.5	FID Slots	14
2.5.1	Slot 0	14
2.5.2	Slot 1	15
2.5.3	Slot 2	16
A	Summary	17
A.1	Status	17
A.2	Comments	17

1 Front

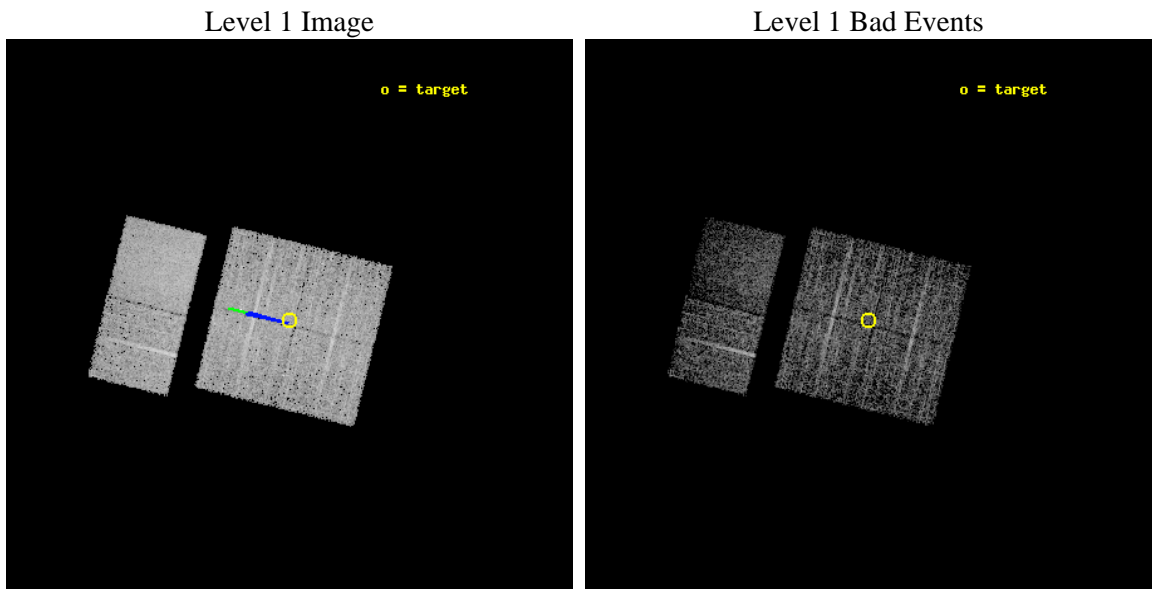
seq_num	900101	Sequence number
obs_id	2274	Observation id
title	CHANDRA SURVEY OF THE GALACTIC RIDGE AROUND THE MILKY WAY CENTER	P
observer	Prof. Q. Daniel Wang	Principal investigator
object	GCS 3	Source name
dtcycle	0	
cycle	P	events from which exps? Prim/Second/Both
ra_targ	266.6772	Observer's specified target RA [deg]
dec_targ	-28.1685	Observer's specified target Dec [deg]
ra_nom	266.67640340109	Nominal RA [deg]
dec_nom	-28.173160465422	Nominal Dec [deg]
roll_nom	283.80731758531	Nominal Roll [deg]
revision	3	Processing version of data
ontime	10556.800009817	Sum of GTIs [s]
livetime	10423.123451551	Livetime [s]
ontime0	10556.800009817	Sum of GTIs [s]
ontime1	10556.800009817	Sum of GTIs [s]
ontime2	10556.800009817	Sum of GTIs [s]
ontime3	10556.800009817	Sum of GTIs [s]
ontime6	10556.800009817	Sum of GTIs [s]
ontime7	10556.800009817	Sum of GTIs [s]
l2events	41429	Number of level 2 events



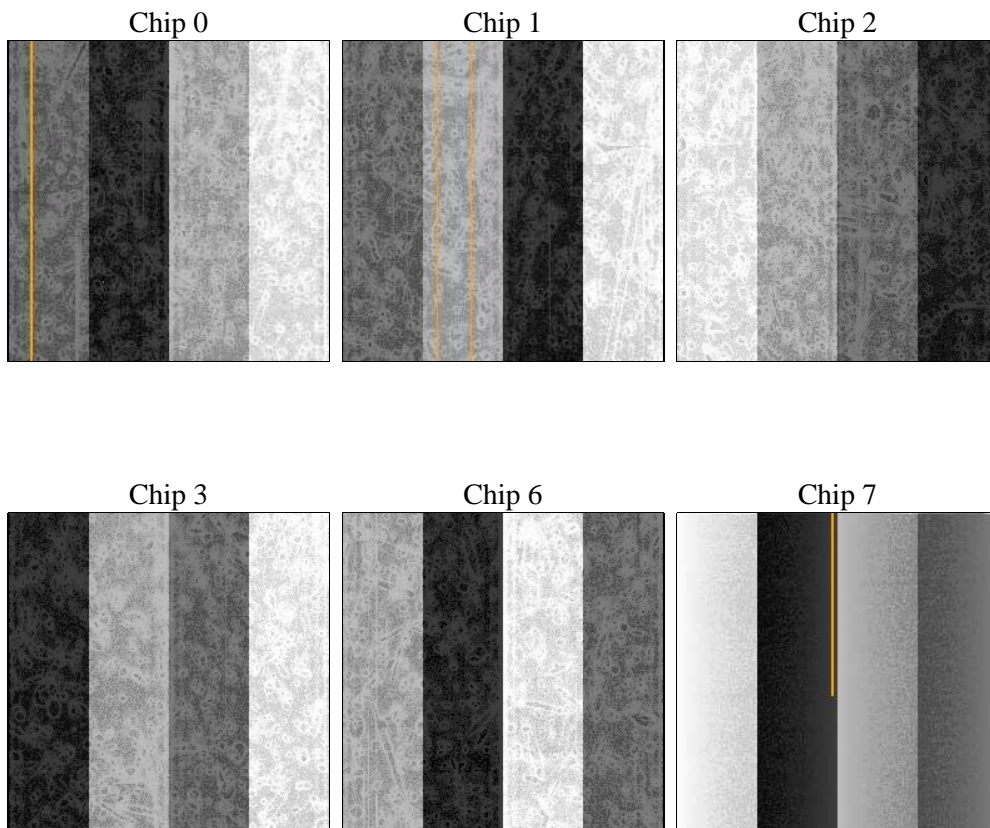
2 OBI

2.1 OBI

2.1.1 Images



2.1.2 Bias



2.1.3 Parameters

obi_num	0	Obi number	sched_exp_time	10800.000000	[s] Scheduled observation exposure time
ascdsver	8.4.5	Processing system revision	ontime	10556.800009817	Sum of GTIs [s]
caldbver	4.5.1.1	 	ontime0	10556.800009817	Sum of GTIs [s]
date	2012-09-20T13:21:29	Date and time of file creation	ontime1	10556.800009817	Sum of GTIs [s]
revision	3	Processing version of data	ontime2	10556.800009817	Sum of GTIs [s]
			ontime3	10556.800009817	Sum of GTIs [s]
			ontime6	10556.800009817	Sum of GTIs [s]
			ontime7	10556.800009817	Sum of GTIs [s]
			l1events	174825	Number of level 1 events

2.1.4 Events

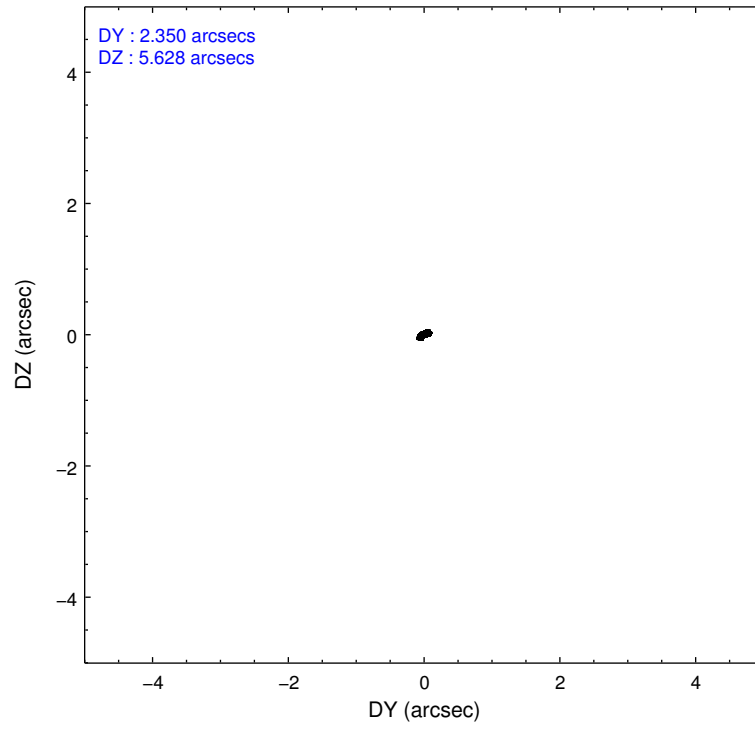
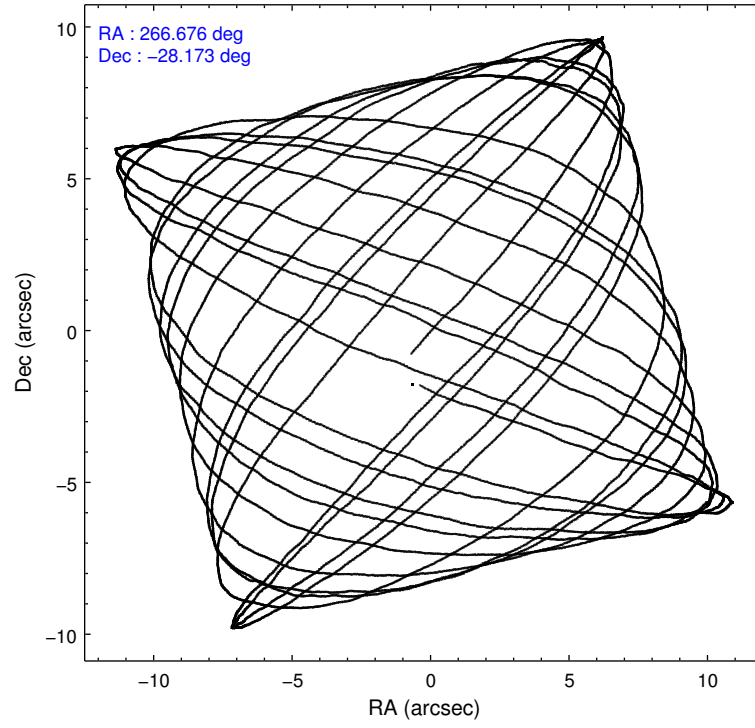
	ccd 0	ccd 1	ccd 2	ccd 3	ccd 6	ccd 7		ccd 0	ccd 1	ccd 2	ccd 3	ccd 6	ccd 7
level 1 events	27532	26920	29412	28661	27775	34525	grade 0 events	2633	2516	2710	2578	2106	1826
rejected events	22101	21585	24100	23421	22957	16346		9%	9%	9%	8%	7%	5%
rejected %	80%	80%	81%	81%	82%	47%	grade 1 events	18	28	28	17	31	38
								0%	0%	0%	0%	0%	0%
							grade 2 events	1088	1017	971	1000	951	3713
								3%	3%	3%	3%	3%	10%
							grade 3 events	462	458	422	429	410	1700
								1%	1%	1%	1%	1%	4%
							grade 4 events	405	428	416	417	424	1719
								1%	1%	1%	1%	1%	4%
							grade 5 events	1074	1228	1034	1222	1266	3929
								3%	4%	3%	4%	4%	11%
							grade 6 events	845	917	794	817	930	9229
								3%	3%	2%	2%	3%	26%
							grade 7 events	21007	20328	23037	22181	21657	12371
								76%	75%	78%	77%	77%	35%

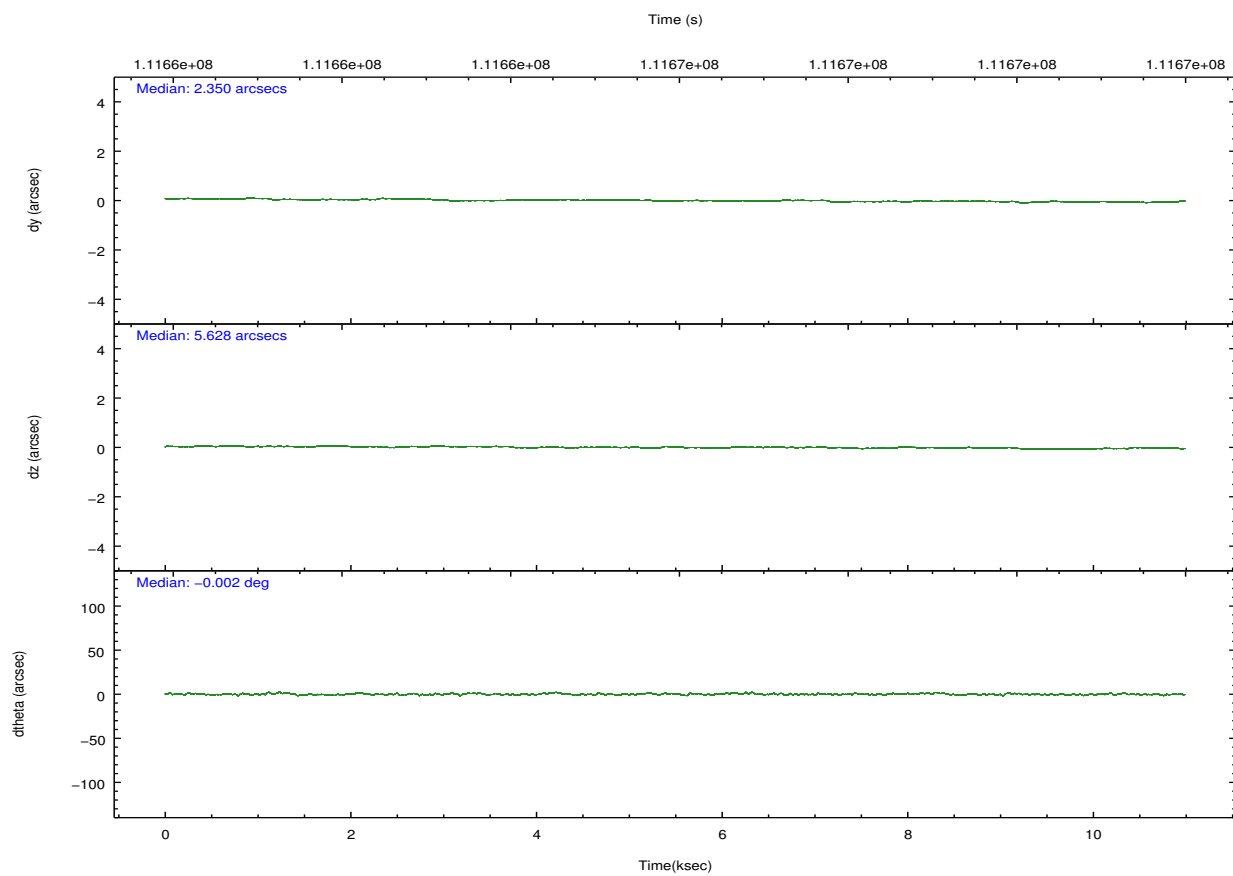
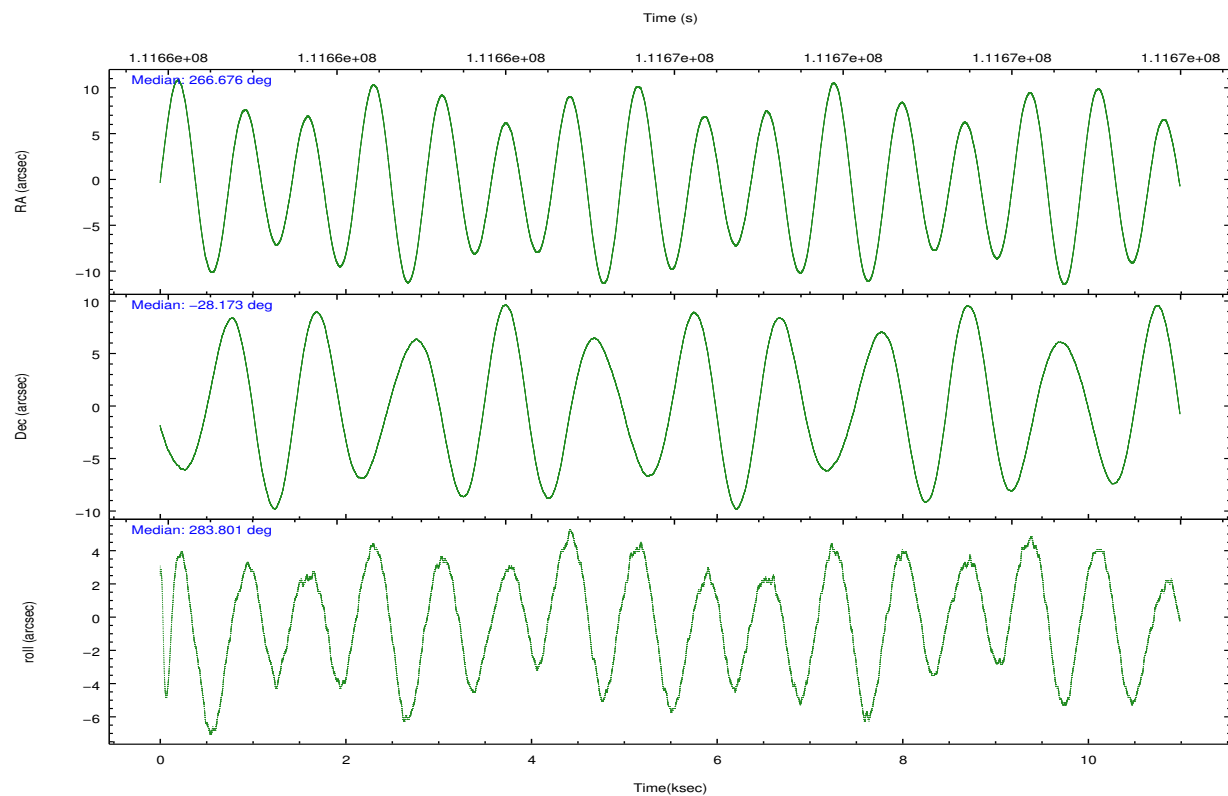
2.2 Compared Parameters

Parameter	Planned	Actual
Instrument	ACIS	ACIS
Detector	ACIS-012367	ACIS-012367
Grating	NONE	NONE
Data mode	FAINT	FAINT
Observation mode	POINTING	POINTING
[deg] Pointing RA	266.654781	266.6764034010901
[deg] Pointing Dec	-28.153393	-28.17316046542218
[deg] Pointing Roll	283.588425	283.8073175853148
[deg] Roll angle	283.600000	283.600000
[deg] Roll tolerance	2.000000	2.000000
Roll constraint allows 180D rotation	N	N
[mm] SIM focus pos	-0.782348	-0.7809083437167272
[mm] SIM defocus	0	0.001439871863259334
[mm] SIM translation stage pos	-233.592463	-233.5874344608287
[mm] SIM translation stage offset	0	-0.005018542100998502
[s] Observation start time (MET)	111660642.184000	111660265.95858
Observation start date	2001-07-16T08:49:38	2001-07-16T08:44:25
[s] Observation end time (MET)	111671442.184000	111671575.80902
Observation end date	2001-07-16T11:49:38	2001-07-16T11:52:55
Read mode	TIMED	TIMED

Parameter	Planned	Actual
Obspar format version number	7	7
Obspar file type	PREDICTED	ACTUAL
Obspar update status	NONE	UPDATED
Number of optional ACIS chips dropped	0	0
On-chip summing requested	N	N
Subarray requested	NONE	NONE
Alternating exposures requested	N	N
[s] Primary exposure time	0.000000	3.2

2.3 Aspect



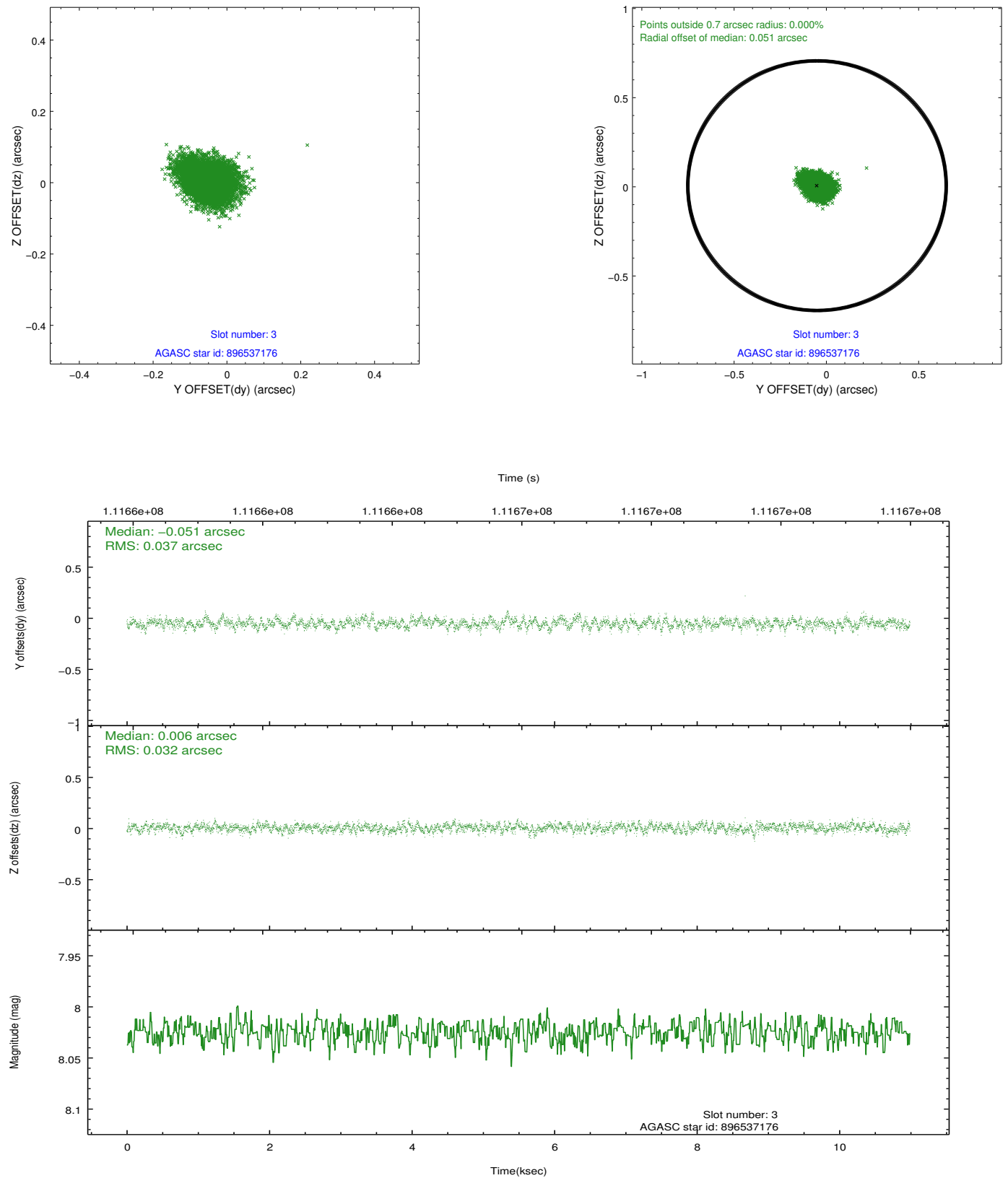


Slot Statistics

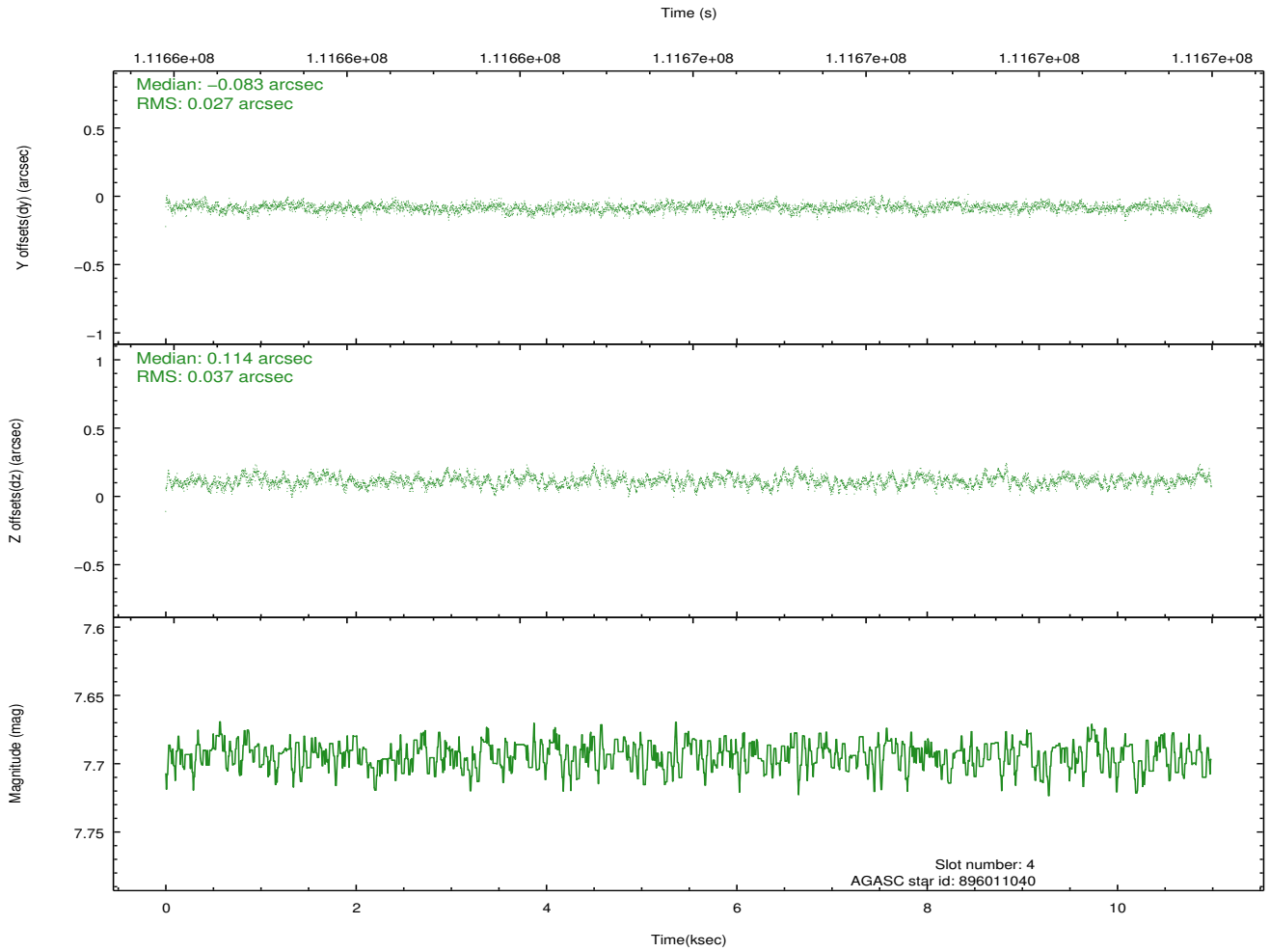
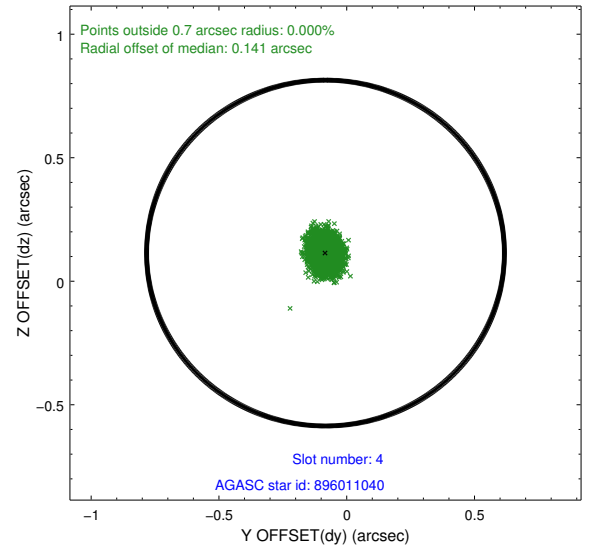
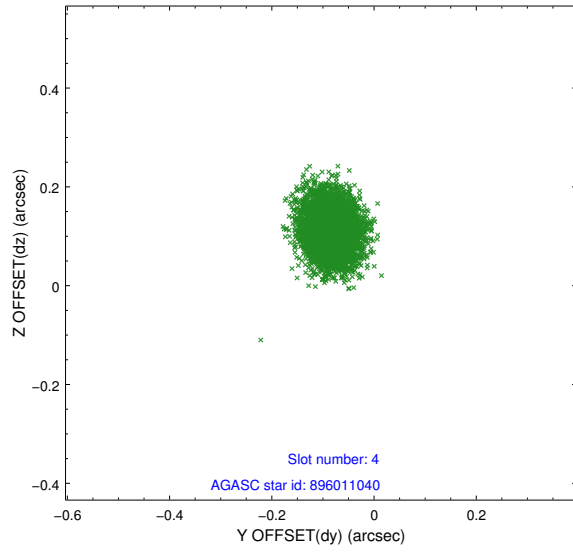
slot	status	id	mag	n_pts	med_dy	med_dz	dr1	dr2	ra	dec	mean_y	mean_z
0	FID	ACIS-I-2	7.15	2679	-0.038	-0.056	0.009	0.016	0.000000	0.000000	-756.75	-835.41
1	FID	ACIS-I-4	7.19	2680	0.013	0.045	0.007	0.014	0.000000	0.000000	2157.14	1070.64
2	FID	ACIS-I-5	7.23	2680	-0.075	0.080	0.009	0.016	0.000000	0.000000	-1810.01	1069.05
3	GUIDE	896537176	8.02	5361	-0.051	0.006	0.051	0.086	266.498272	-28.678259	1721.89	-924.28
4	GUIDE	896011040	7.69	5361	-0.083	0.114	0.049	0.081	267.058469	-28.014759	-180.52	1363.79
5	GUIDE	896535464	9.33	5355	0.047	-0.078	0.082	0.137	266.962550	-28.408631	1124.26	731.44
6	GUIDE	896012968	8.67	5360	-0.039	0.016	0.058	0.094	266.634547	-27.600471	-1948.83	404.89
7	GUIDE	896534664	8.19	5360	0.127	-0.056	0.061	0.100	266.405570	-28.407461	705.33	-982.00

2.4 Star Slots

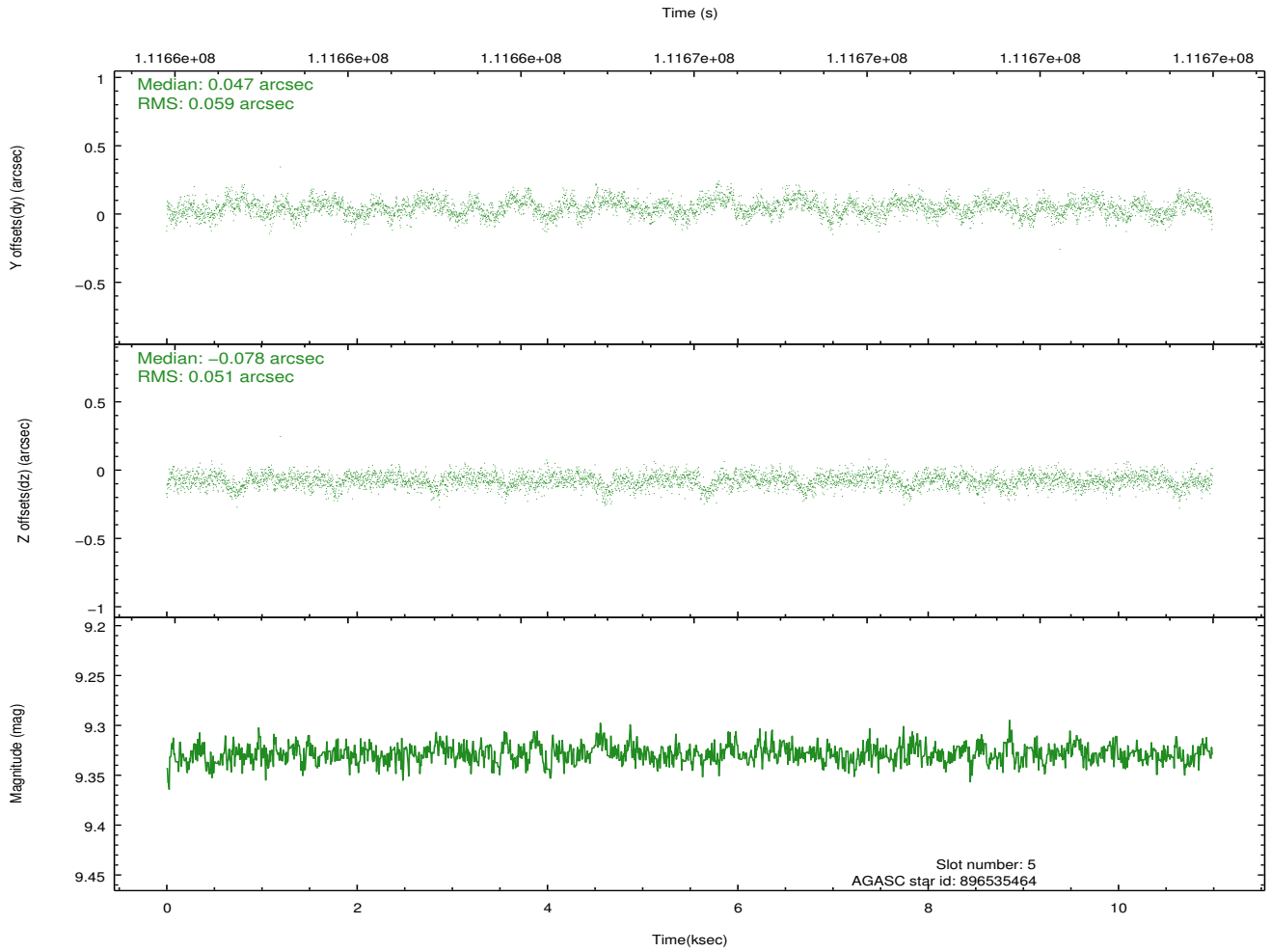
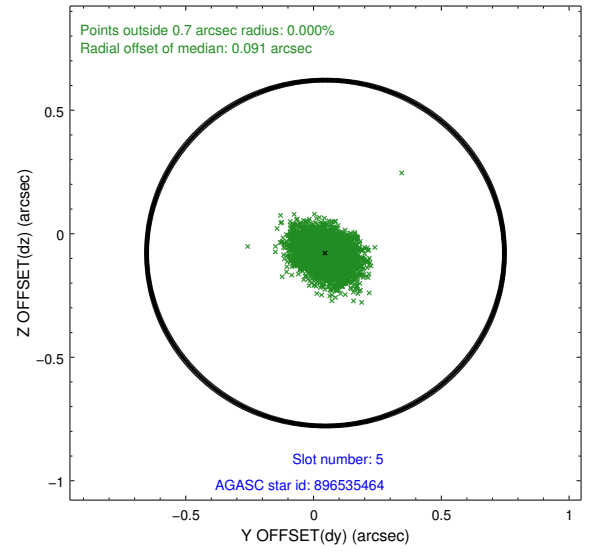
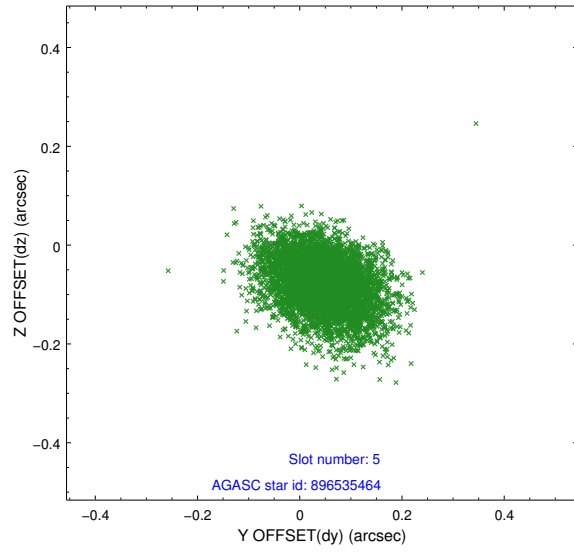
2.4.1 Slot 3



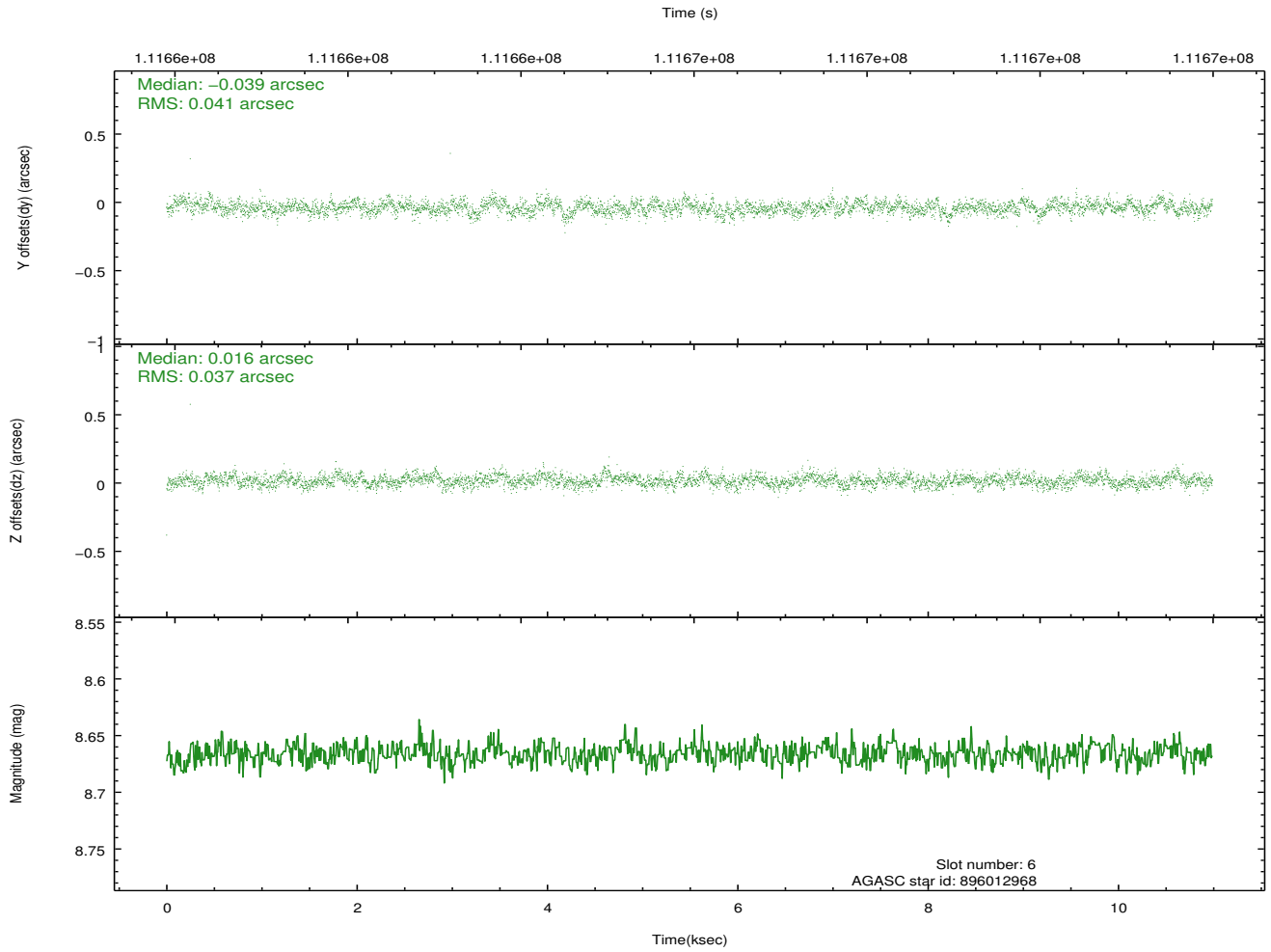
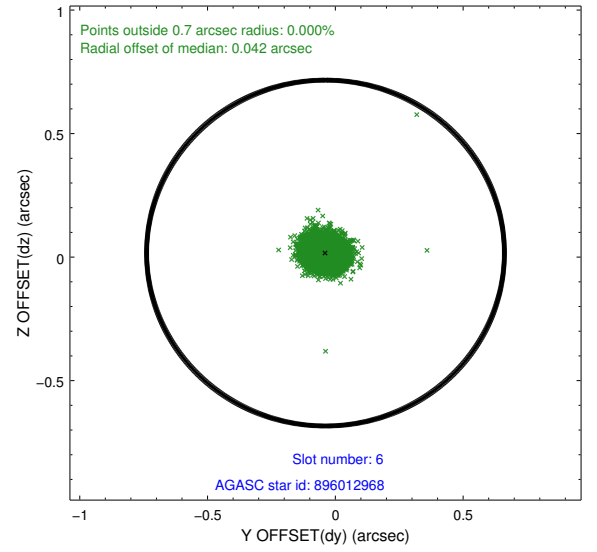
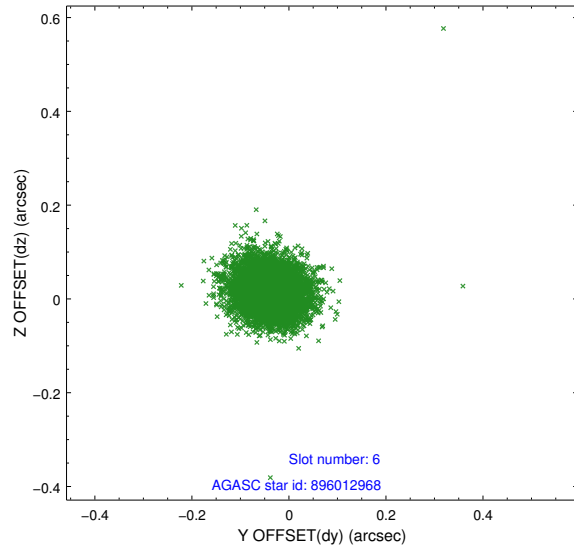
2.4.2 Slot 4



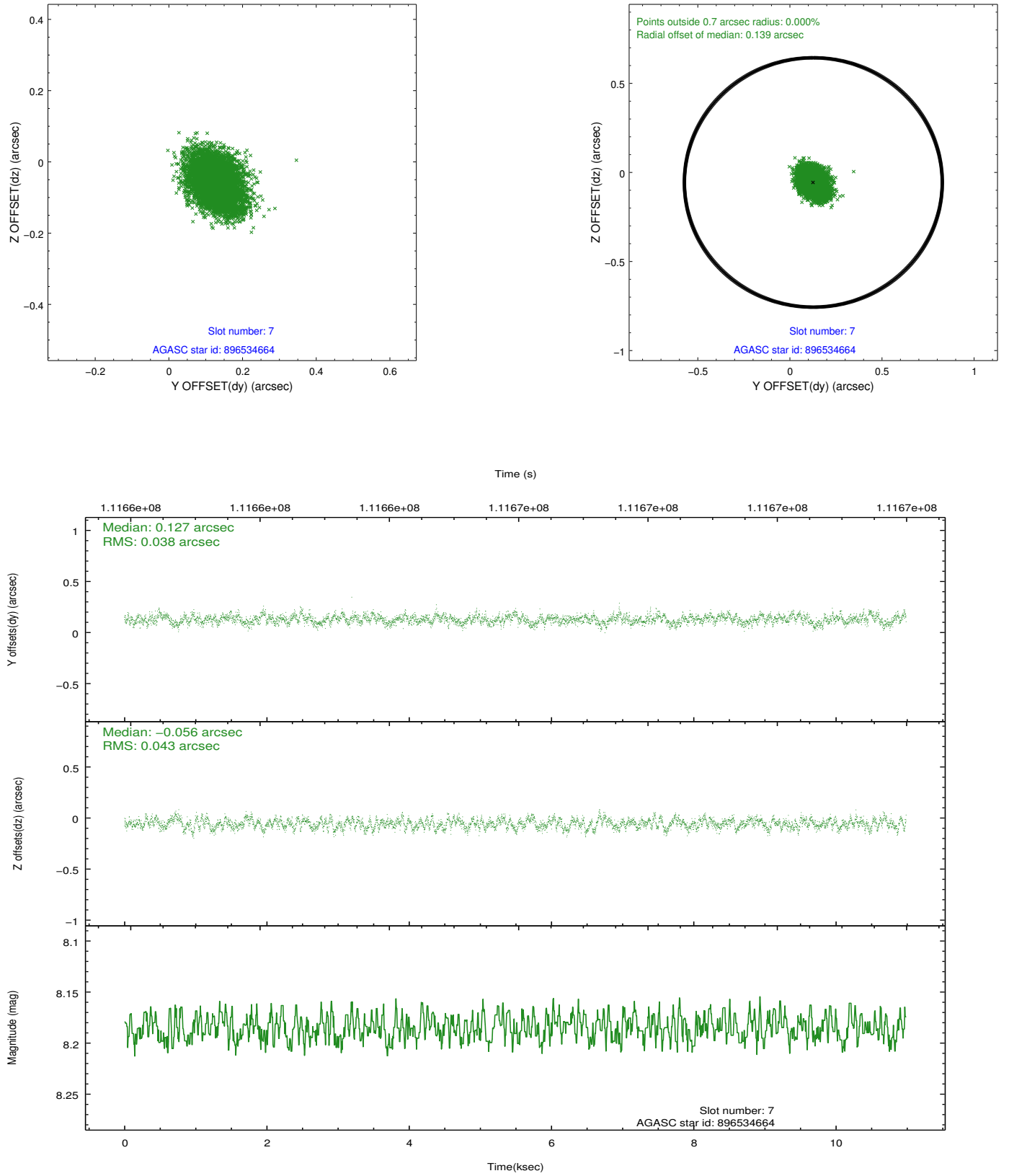
2.4.3 Slot 5



2.4.4 Slot 6

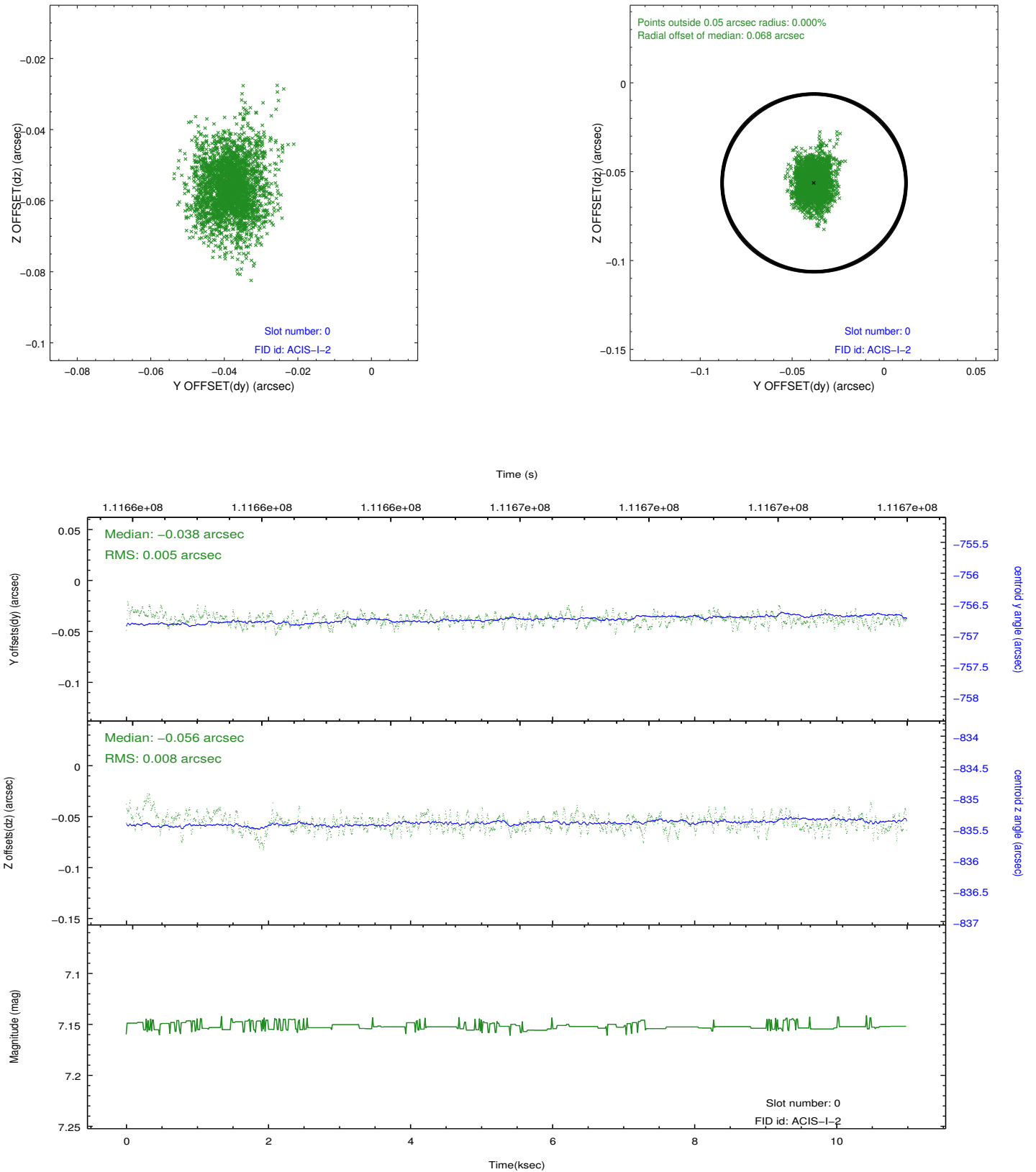


2.4.5 Slot 7

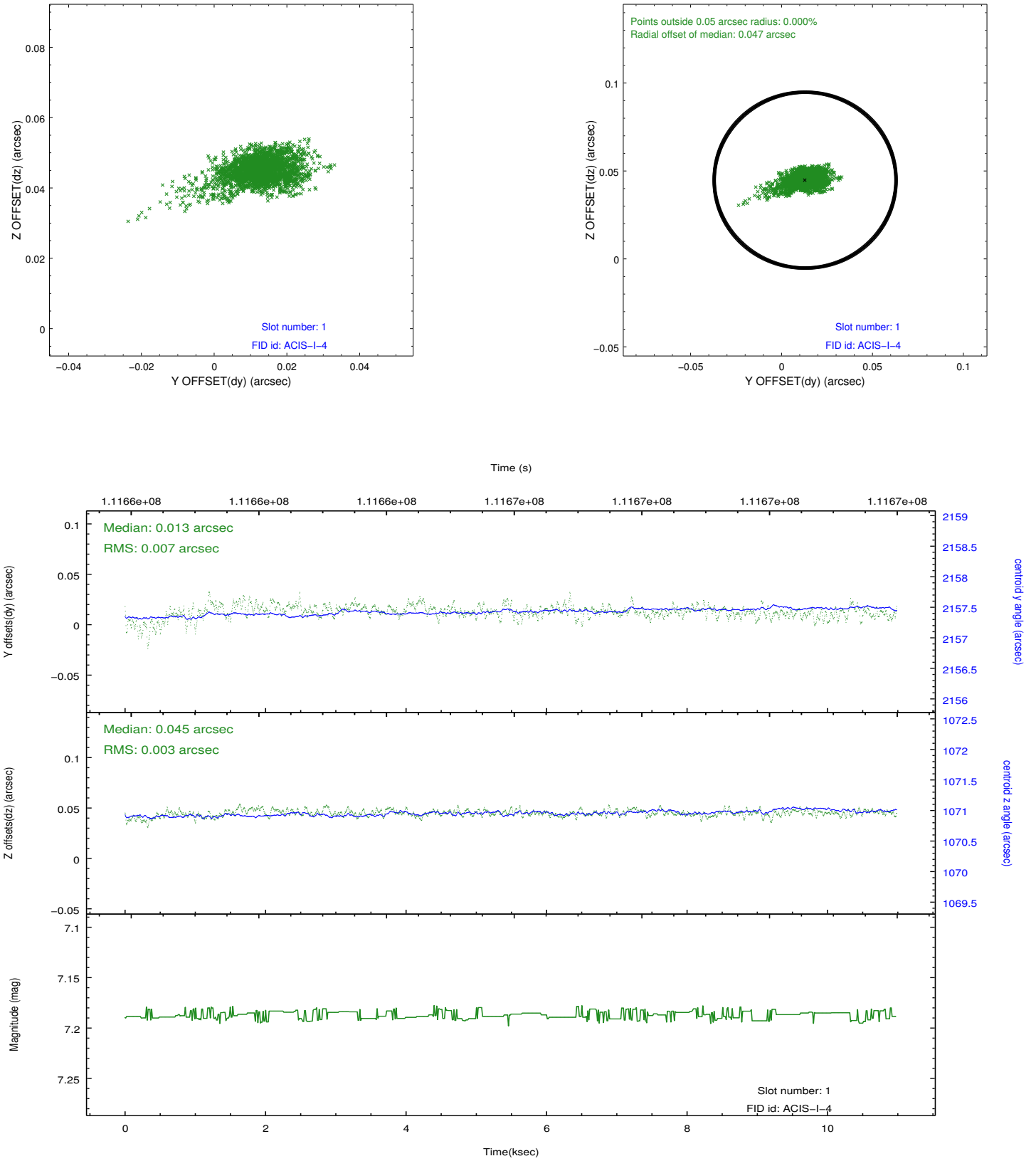


2.5 FID Slots

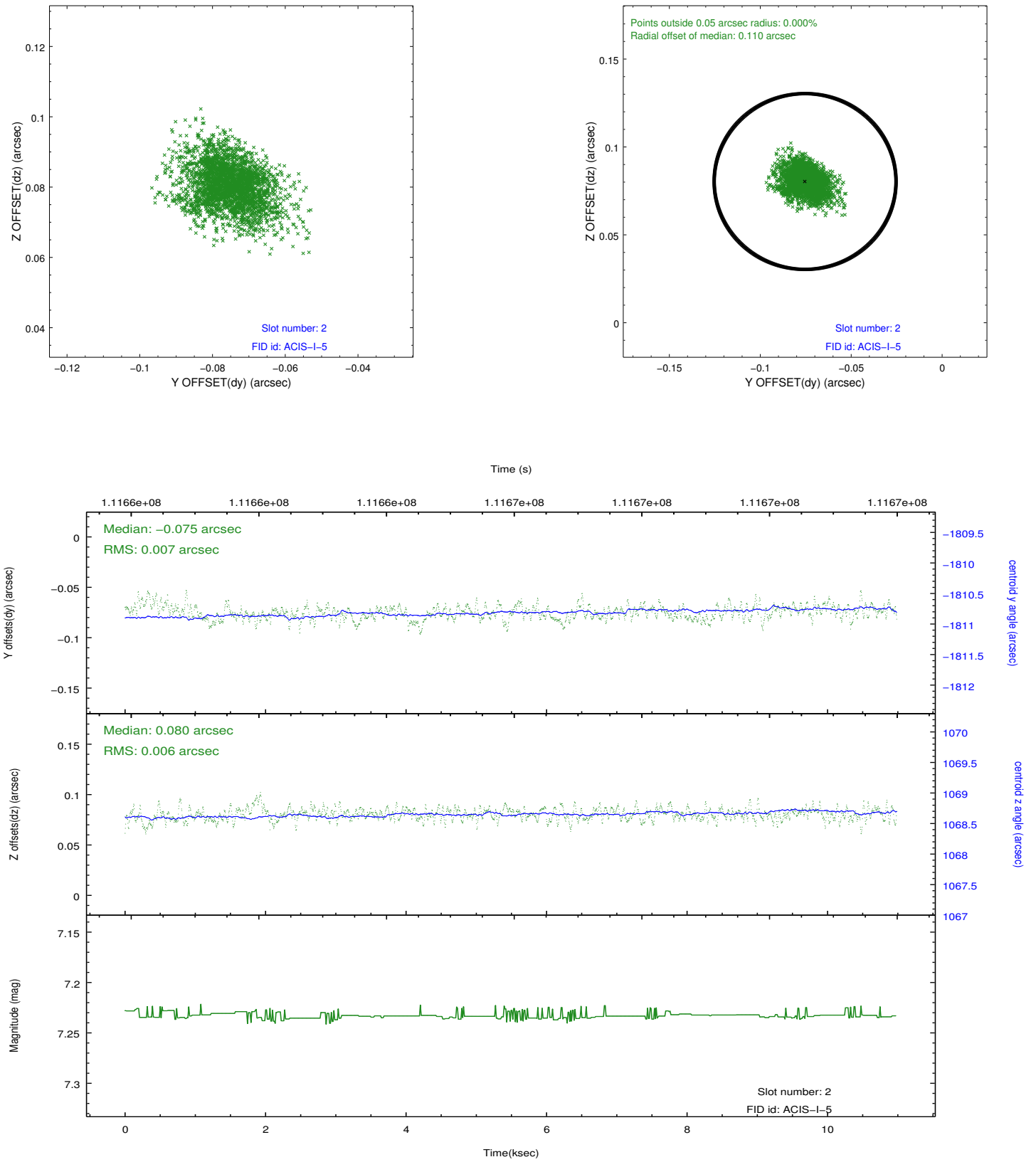
2.5.1 Slot 0



2.5.2 Slot 1



2.5.3 Slot 2



A Summary

A.1 Status

V&V Scientist	Jen Lauer
V&V Date (YYYY-MM-DD)	2012.09.24
V&V Edition	1
V&V Disposition and Status	OK
V&V Charge Time	10.6

A.2 Comments

Charge time for this ObsId remains at previous value of 10.6 ks although with the current processing the charge time would have been 10.56 ksec.
Roll constraint met.