

V&V Reference Report

L2 ASCDS Version : 7.6.9

Observation 2274 - L2 Version 001
Chandra X-Ray Center

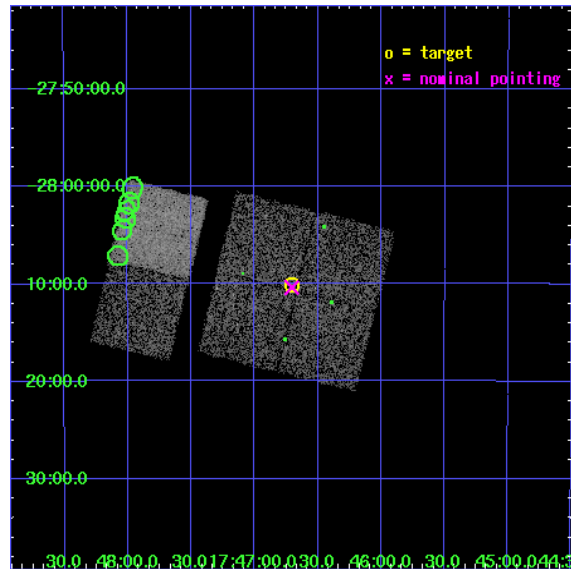
L2 Processing Date : Dec 14 2006

Contents

1	Front	2
2	OBI	3
2.1	OBI	3
2.1.1	Images	3
2.1.2	Bias	3
2.1.3	Parameters	4
2.1.4	Events	4
2.2	Compared Parameters	5
2.3	Aspect	6
2.4	Star Slots	9
2.4.1	Slot 3	9
2.4.2	Slot 4	10
2.4.3	Slot 5	11
2.4.4	Slot 6	12
2.4.5	Slot 7	13
2.5	FID Slots	14
2.5.1	Slot 0	14
2.5.2	Slot 1	15
2.5.3	Slot 2	16
3	Point Sources	17
A	Summary	18
A.1	Status	18
A.2	Comments	18

1 Front

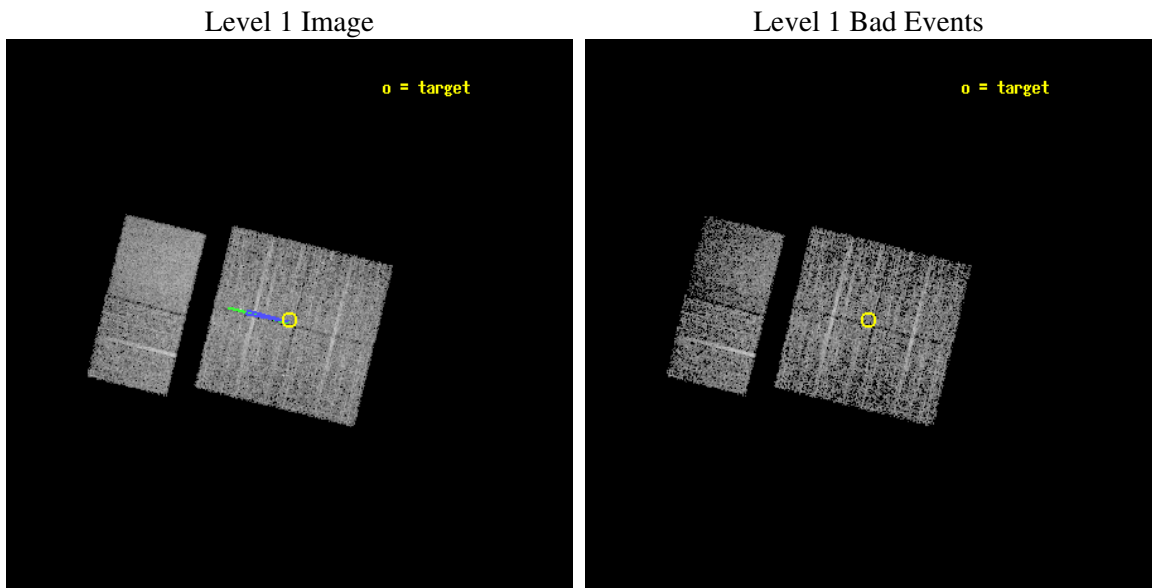
seq_num	900101
obs_id	2274
title	CHANDRA SURVEY OF THE GALACTIC RIDGE AROUND THE MILKY WAY CENTER
observer	Prof. Q. Daniel Wang
object	GCS 3
dtcycle	0
cycle	P
ra_targ	266.6772
dec_targ	-28.1685
ra_nom	266.67640340109
dec_nom	-28.173160465422
roll_nom	283.80731758531
revision	2
ontime	10556.800009832
livetime	10423.123451565
ontime0	10556.800009832
ontime1	10556.800009832
ontime2	10556.800009832
ontime3	10556.800009832
ontime6	10556.800009832
ontime7	10556.800009832
l2events	40319



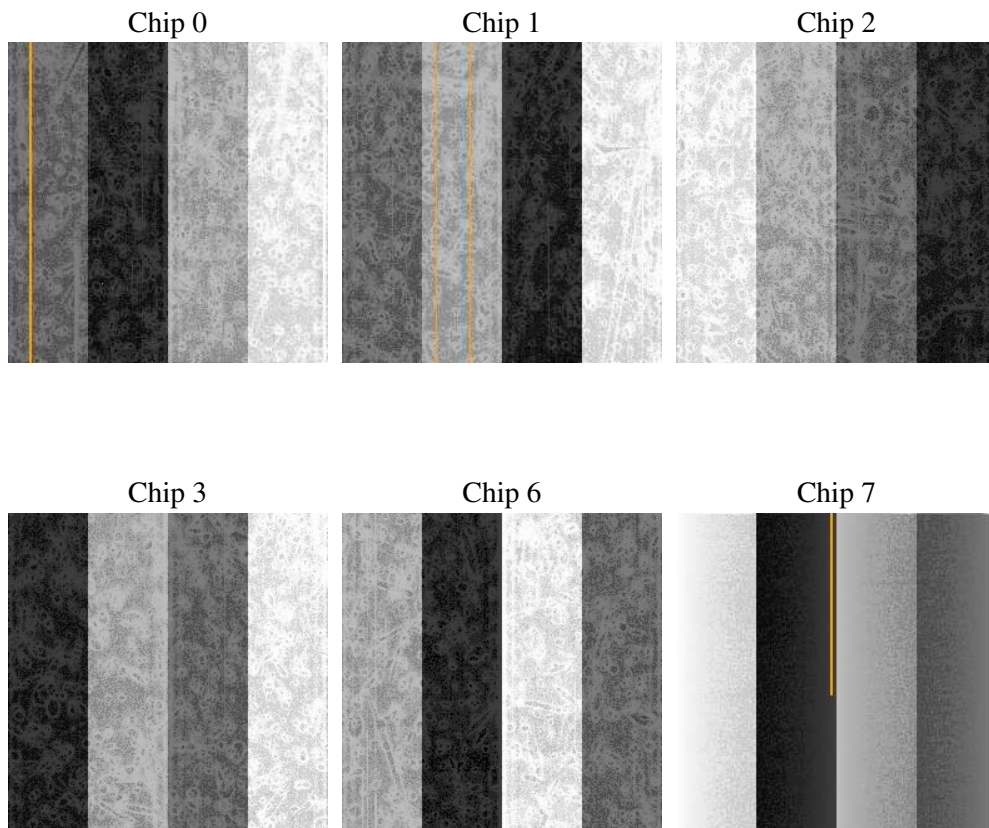
2 OBI

2.1 OBI

2.1.1 Images



2.1.2 Bias



2.1.3 Parameters

obi_num	0
ascdsver	7.6.9
caldbver	3.2.4
date	2006-12-14T09:15:08
revision	2

sched_exp_time	10800.000000
ontime	10562.43938303
ontime0	10562.43938303
ontime1	10562.43938303
ontime2	10562.43938303
ontime3	10562.43938303
ontime6	10562.43938303
ontime7	10562.439402953
l1events	174825

2.1.4 Events

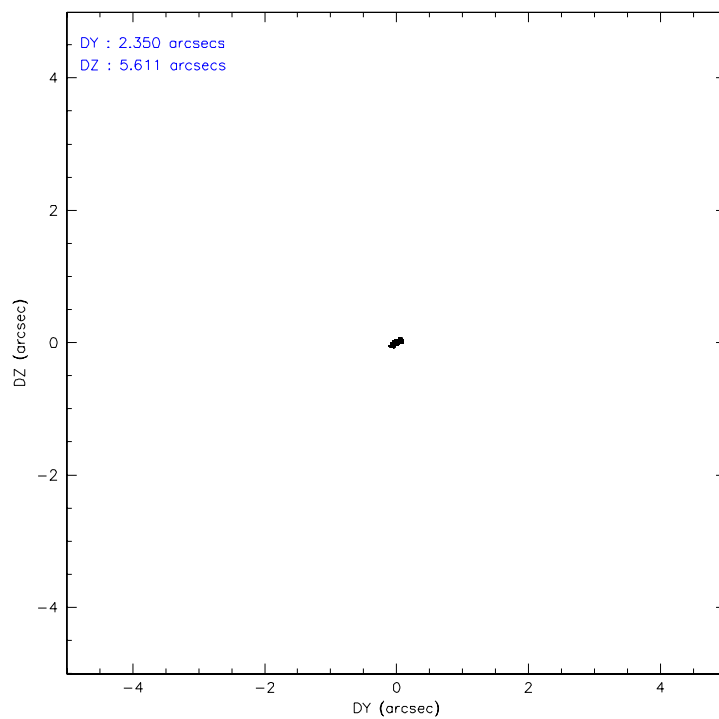
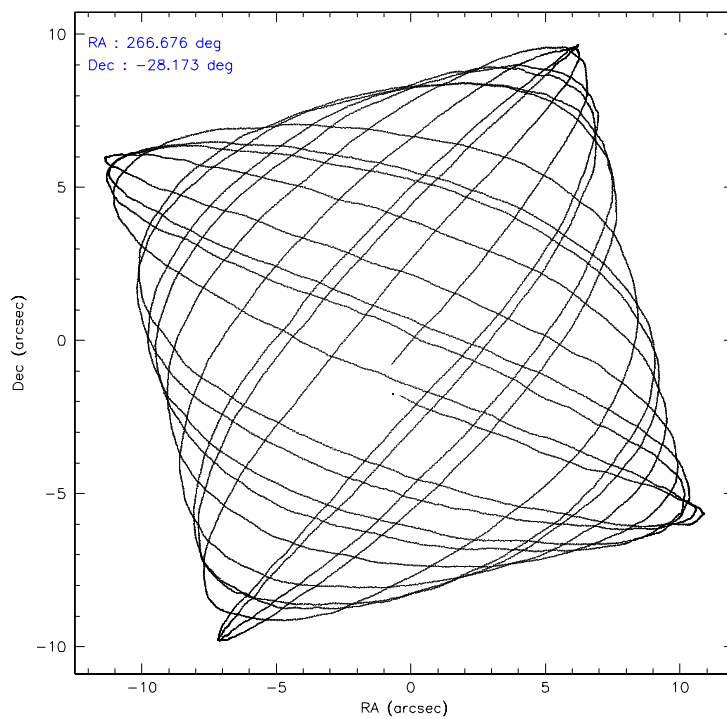
	ccd 0	ccd 1	ccd 2	ccd 3	ccd 6	ccd 7
level 1 events	27532	26920	29412	28661	27775	34525
rejected events	22102	21586	24102	23423	22959	17464
rejected %	80%	80%	81%	81%	82%	50%

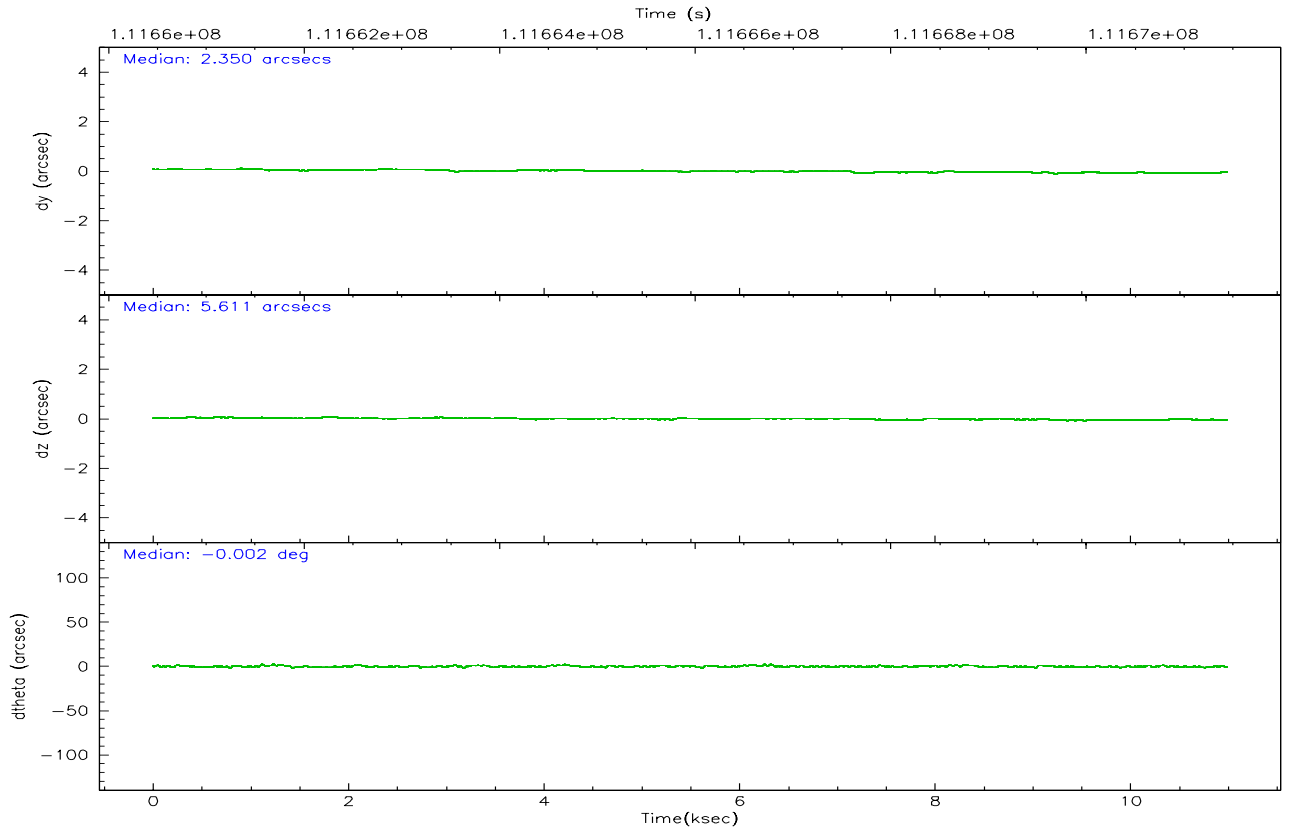
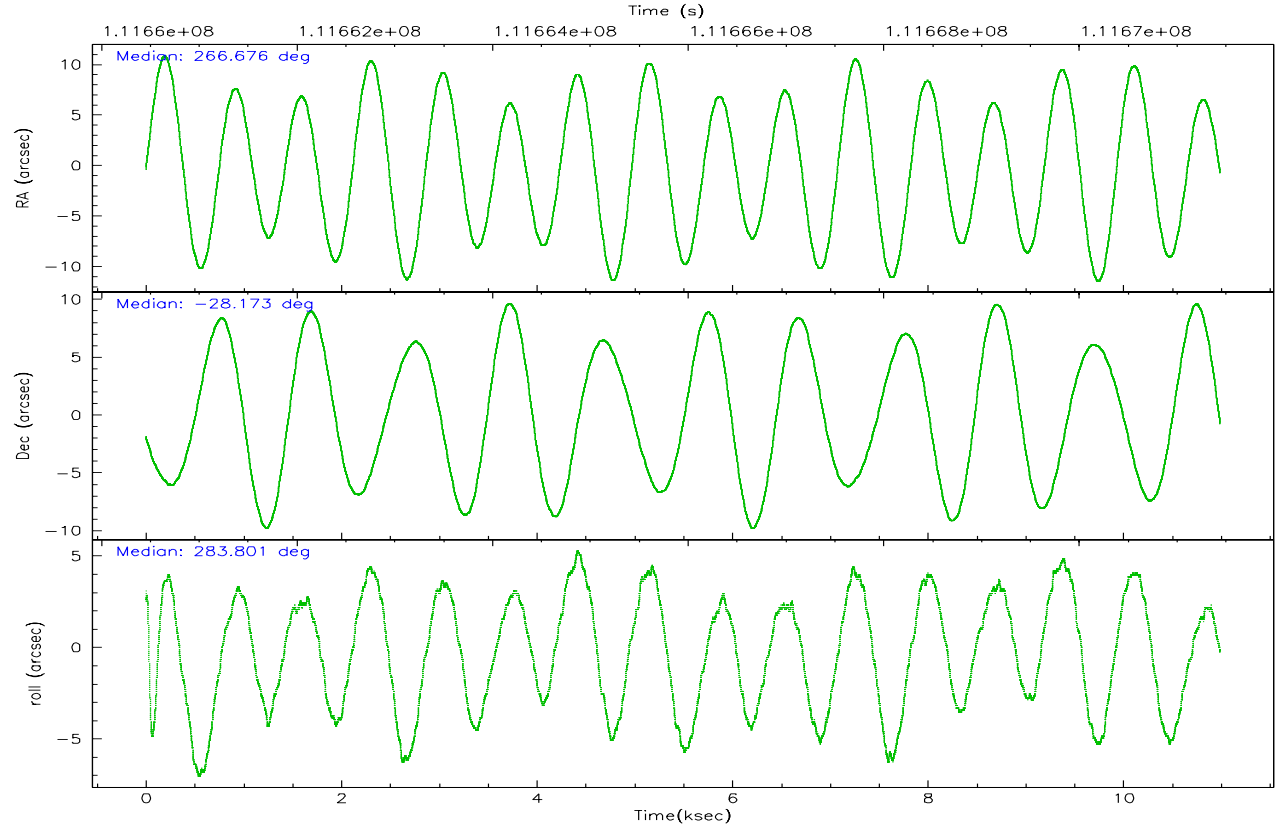
	ccd 0	ccd 1	ccd 2	ccd 3	ccd 6	ccd 7
grade 0 events	2633	2516	2710	2578	2106	1101
	9%	9%	9%	8%	7%	3%
grade 1 events	18	28	28	17	31	27
	0%	0%	0%	0%	0%	0%
grade 2 events	1088	1017	971	1000	951	4319
	3%	3%	3%	3%	3%	12%
grade 3 events	462	458	422	429	410	937
	1%	1%	1%	1%	1%	2%
grade 4 events	405	428	416	417	424	999
	1%	1%	1%	1%	1%	2%
grade 5 events	1074	1228	1034	1222	1267	3001
	3%	4%	3%	4%	4%	8%
grade 6 events	845	917	794	817	929	9714
	3%	3%	2%	2%	3%	28%
grade 7 events	21007	20328	23037	22181	21657	14427
	76%	75%	78%	77%	77%	41%

2.2 Compared Parameters

Parameter	Planned	Actual	Parameter	Planned	Actual
Instrument	ACIS	ACIS	Obspar format version number	6	6
Detector	ACIS-012367	ACIS-012367	Obspar file type	PREDICTED	ACTUAL
Grating	NONE	NONE	Obspar update status	NONE	UPDATED
Data mode	FAINT	FAINT	Number of optional ACIS chips dropped	0	0
Observation mode	POINTING	POINTING	On-chip summing requested	N	N
Pointing RA	266.654781	266.6764034010902	Subarray requested	NONE	NONE
Pointing Dec	-28.153393	-28.17316046542237	Alternating exposures requested	N	N
Pointing Roll	283.588425	283.8073175853149	Primary exposure time	0.000000	3.2
Roll angle	283.600000	283.600000			
Roll tolerance	2.000000	2.000000			
Roll constraint allows 180D rotation	N	N			
SIM focus pos (mm)	-0.782348	-0.7809083437167272			
SIM defocus (mm)	0	0.001439871863259334			
SIM translation stage pos (mm)	-233.592463	-233.5874344608287			
SIM translation stage offset (mm)	0	-0.005018542100998502			
Observation start time	111660642.184000	111660265.95858			
Observation start date	2001-07-16T08:49:38	2001-07-16T08:44:25			
Observation end time	111671442.184000	111671575.80902			
Observation end date	2001-07-16T11:49:38	2001-07-16T11:52:55			
Read mode	TIMED	TIMED			

2.3 Aspect



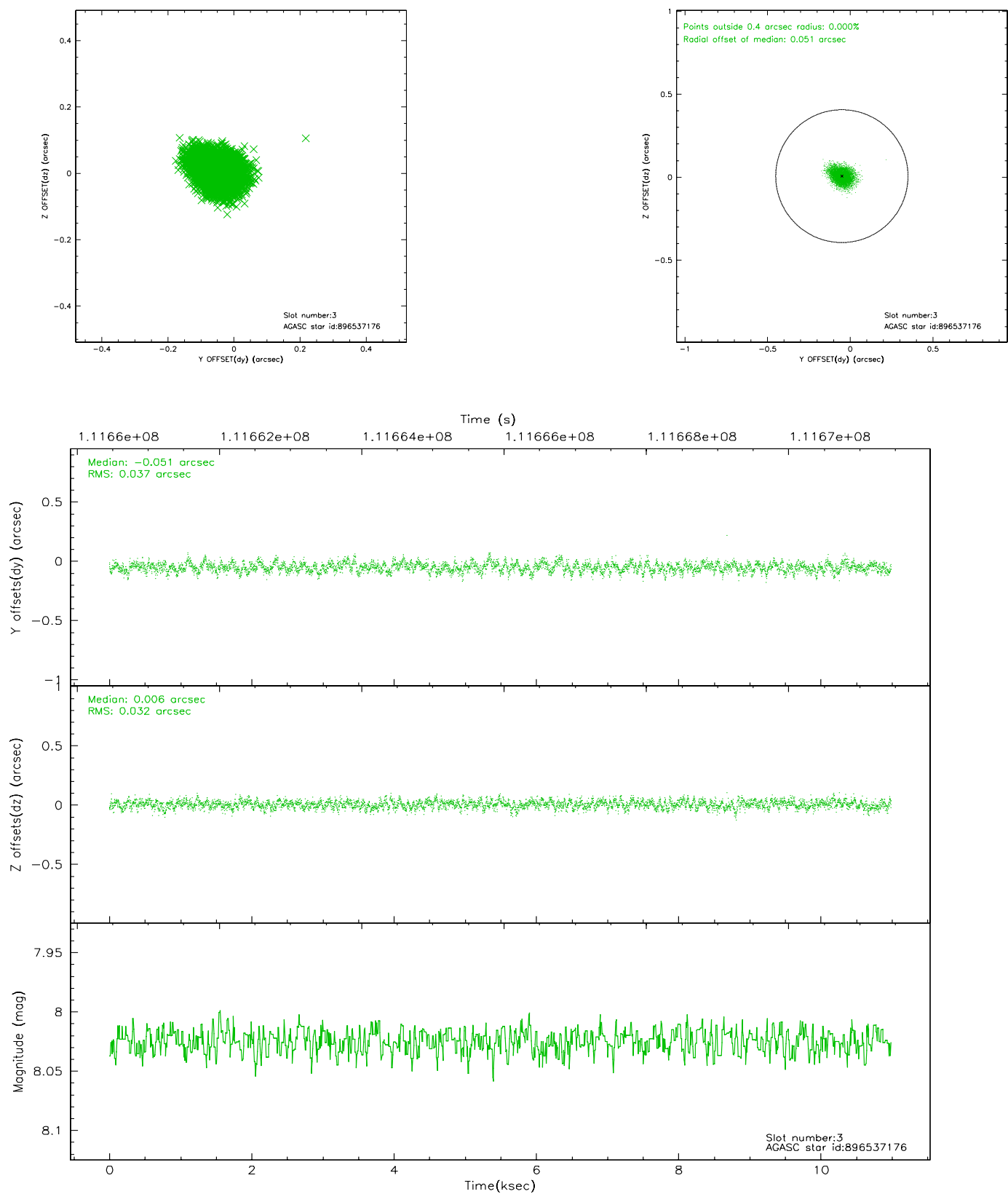


Slot Statistics

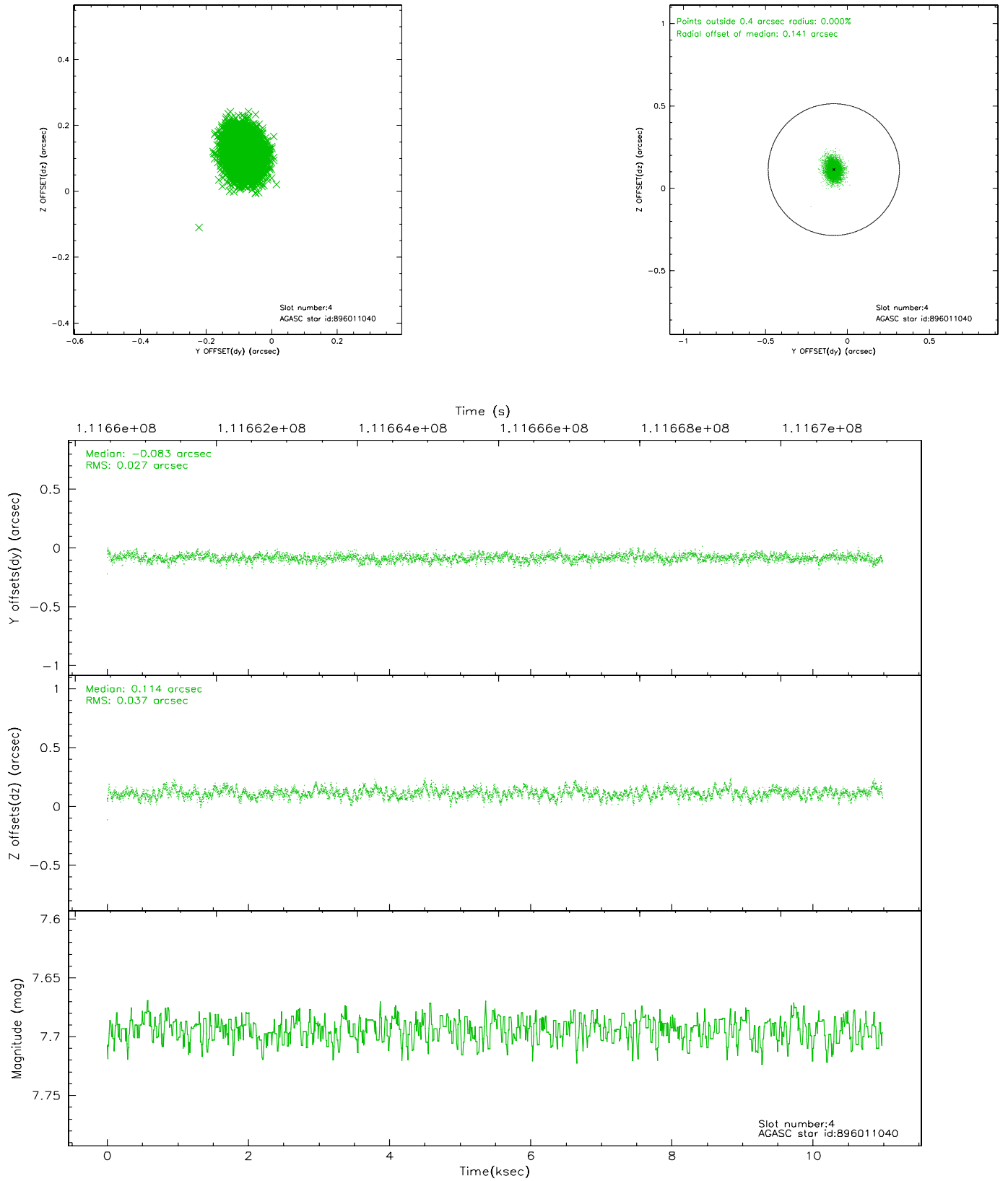
slot	status	id	mag	n_pts	med_dy	med_dz	dr1	dr2	ra	dec	mean_y	mean_z
0	FID	ACIS-I-2	7.15	2679	-0.027	-0.033	0.009	0.016	0.000000	0.000000	-756.73	-835.37
1	FID	ACIS-I-4	7.19	2680	-0.029	0.033	0.006	0.014	0.000000	0.000000	2157.10	1070.65
2	FID	ACIS-I-5	7.23	2680	-0.044	0.069	0.010	0.016	0.000000	0.000000	-1809.98	1069.05
3	GUIDE	896537176	8.02	5361	-0.051	0.006	0.051	0.086	266.498272	-28.678259	1721.89	-924.28
4	GUIDE	896011040	7.69	5361	-0.083	0.114	0.049	0.081	267.058469	-28.014759	-180.52	1363.79
5	GUIDE	896535464	9.33	5355	0.047	-0.078	0.082	0.137	266.962550	-28.408631	1124.26	731.44
6	GUIDE	896012968	8.67	5360	-0.039	0.016	0.058	0.094	266.634547	-27.600471	-1948.83	404.89
7	GUIDE	896534664	8.19	5360	0.127	-0.056	0.061	0.100	266.405570	-28.407461	705.33	-982.00

2.4 Star Slots

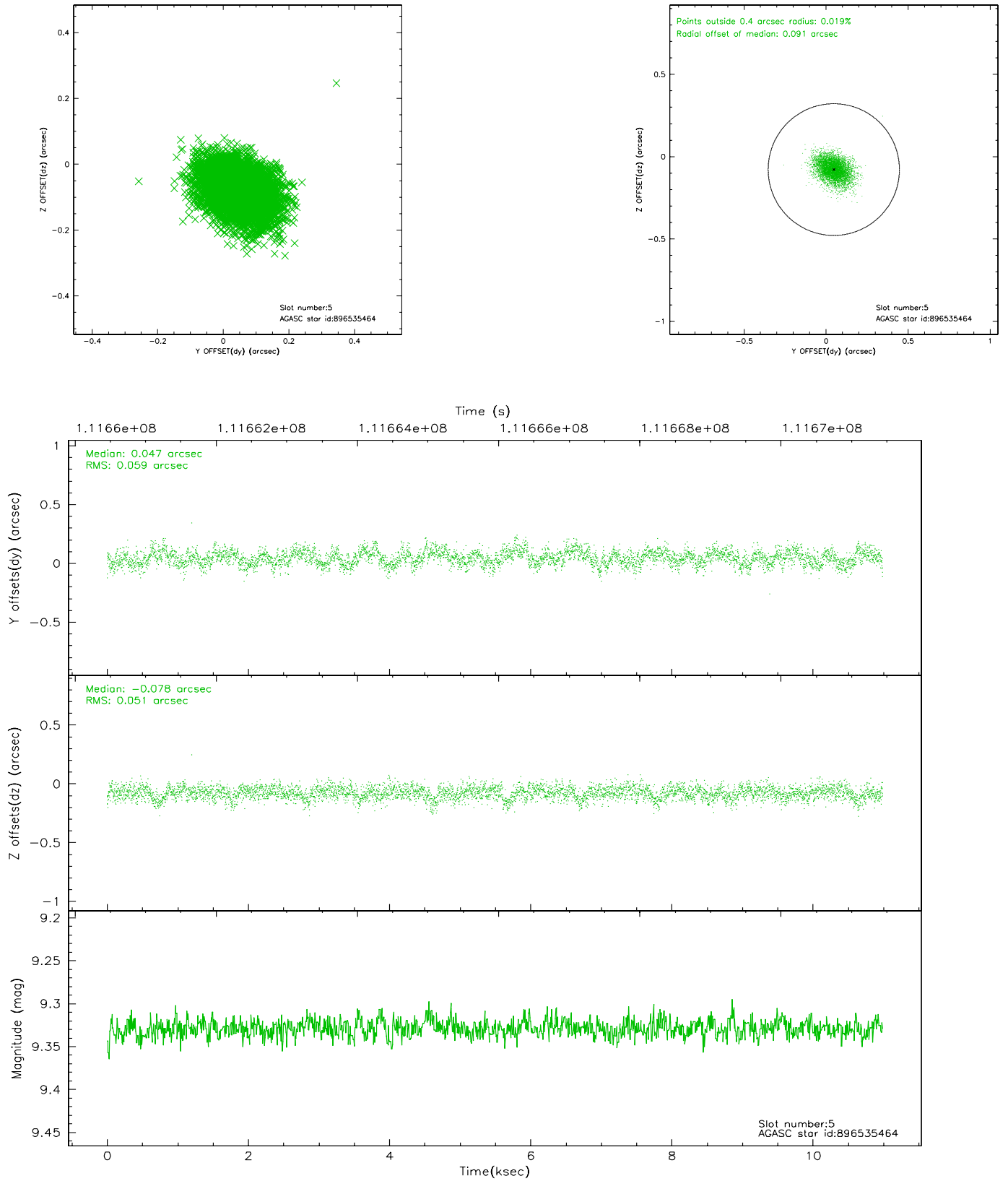
2.4.1 Slot 3



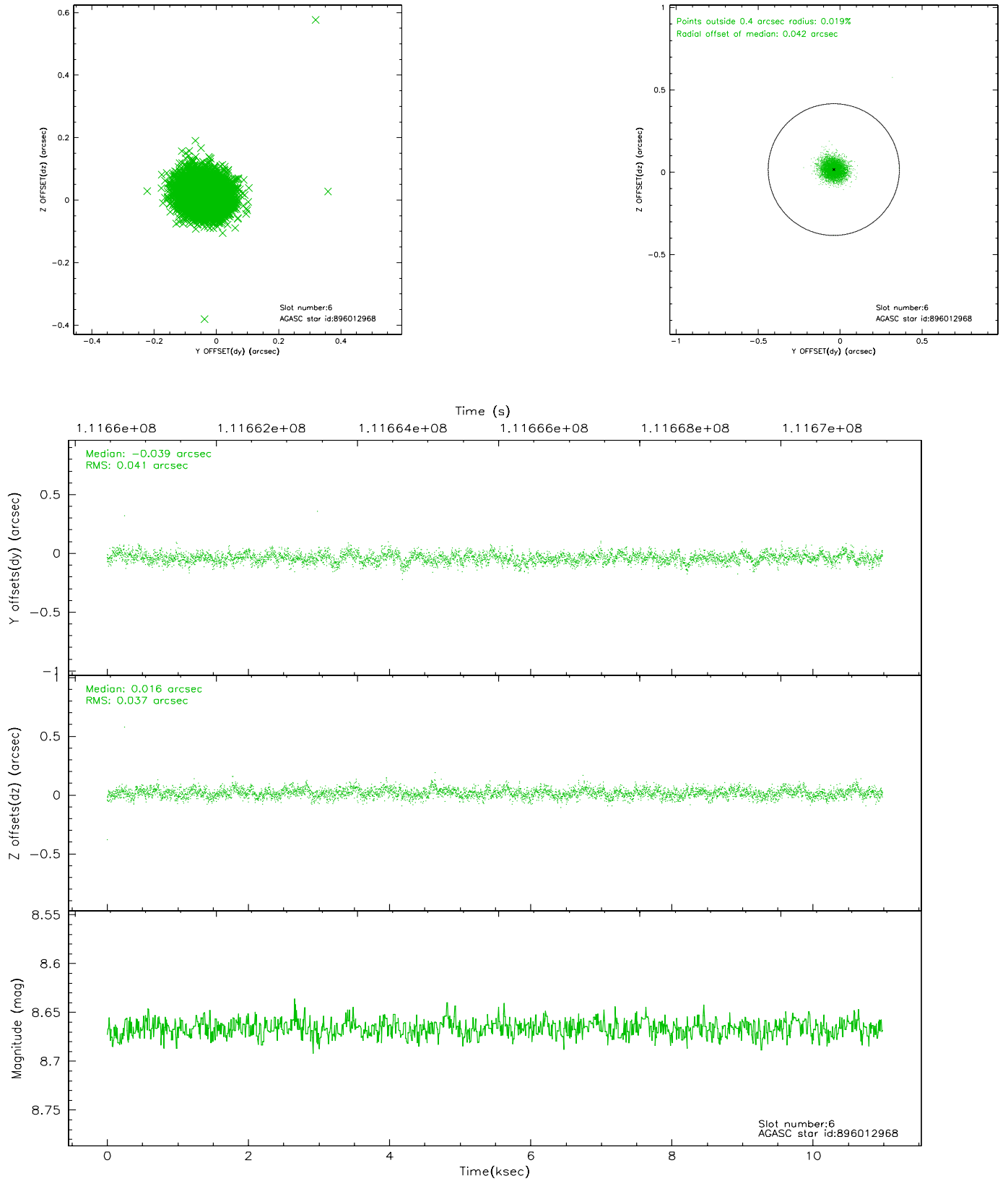
2.4.2 Slot 4



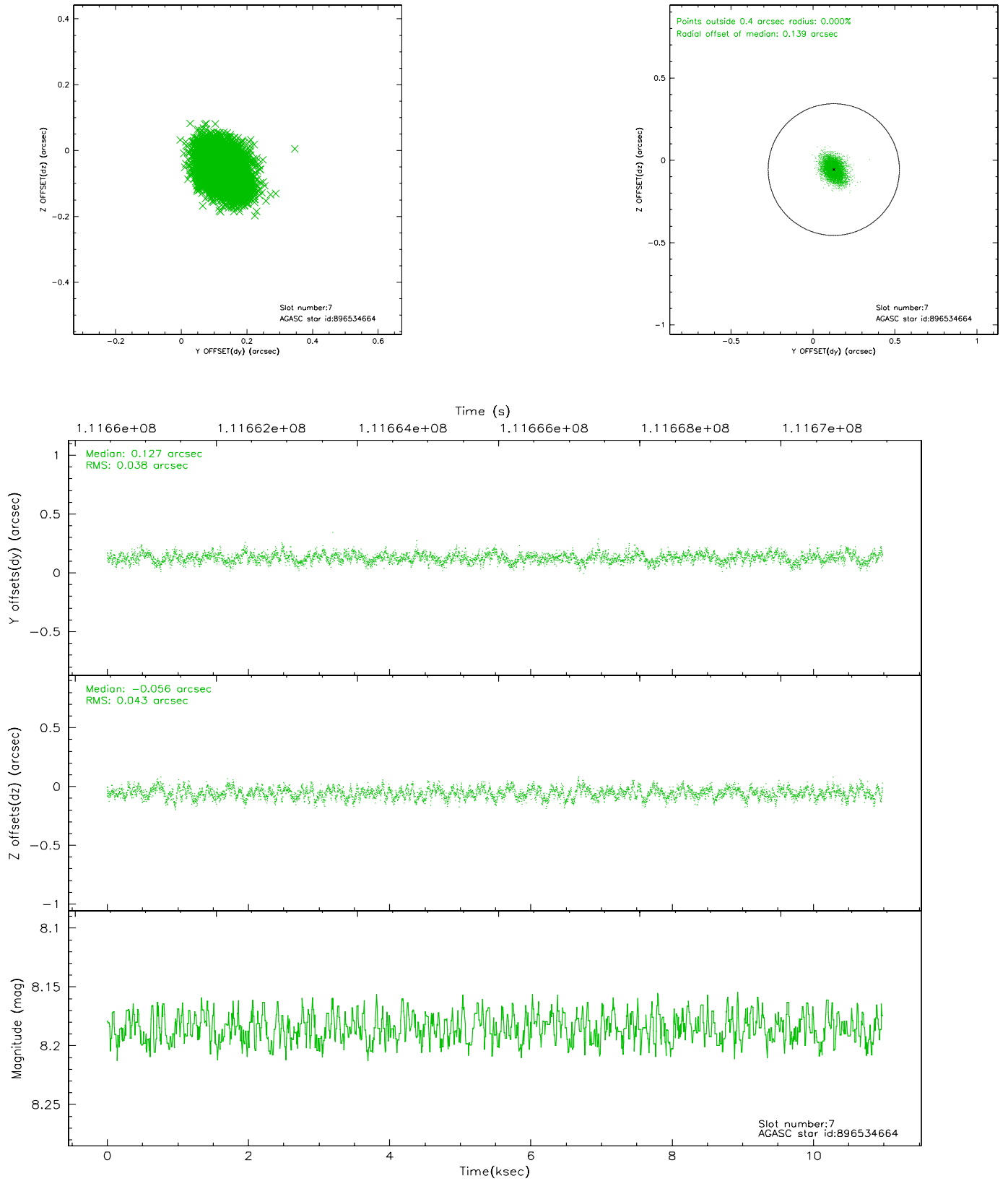
2.4.3 Slot 5



2.4.4 Slot 6

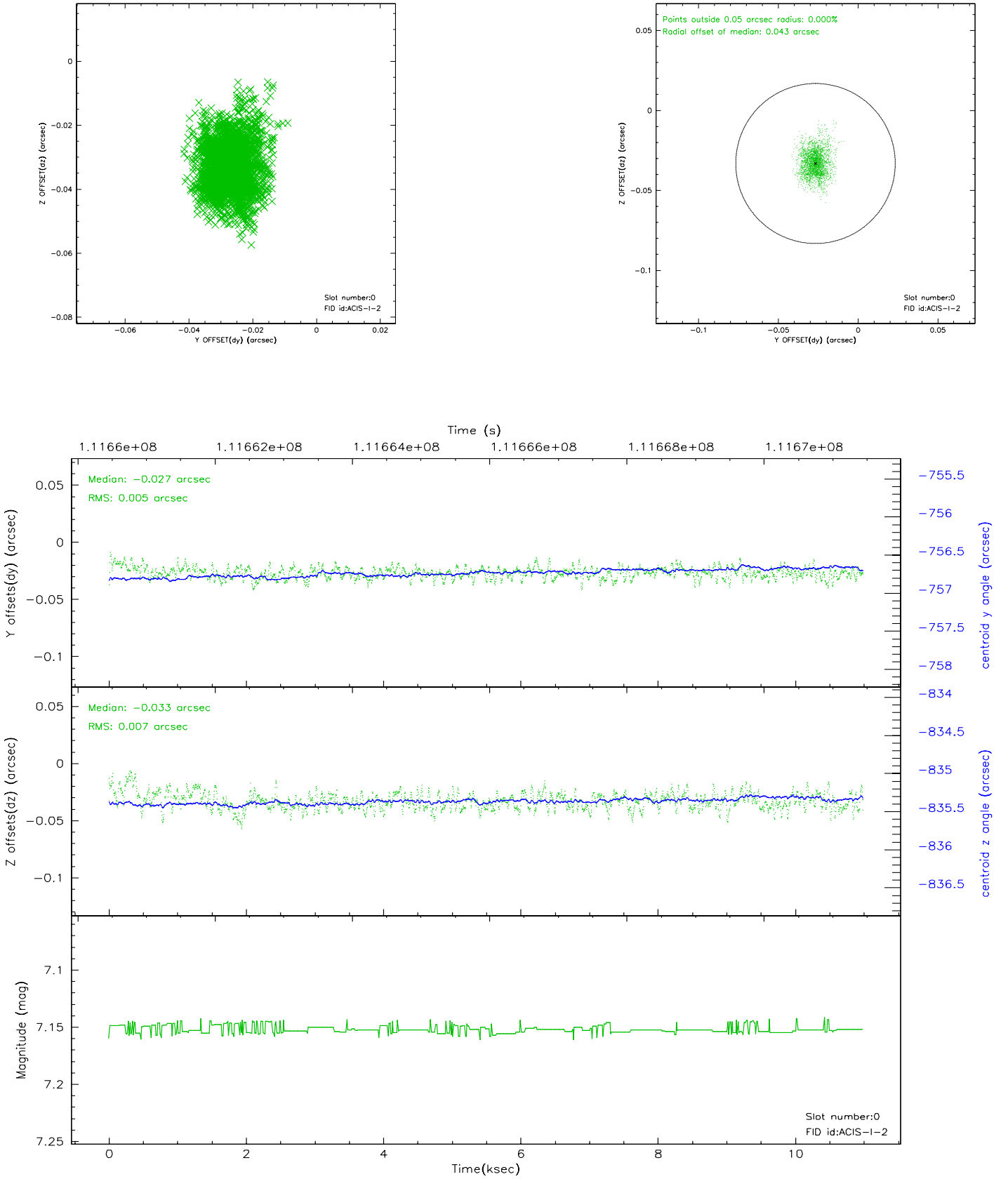


2.4.5 Slot 7

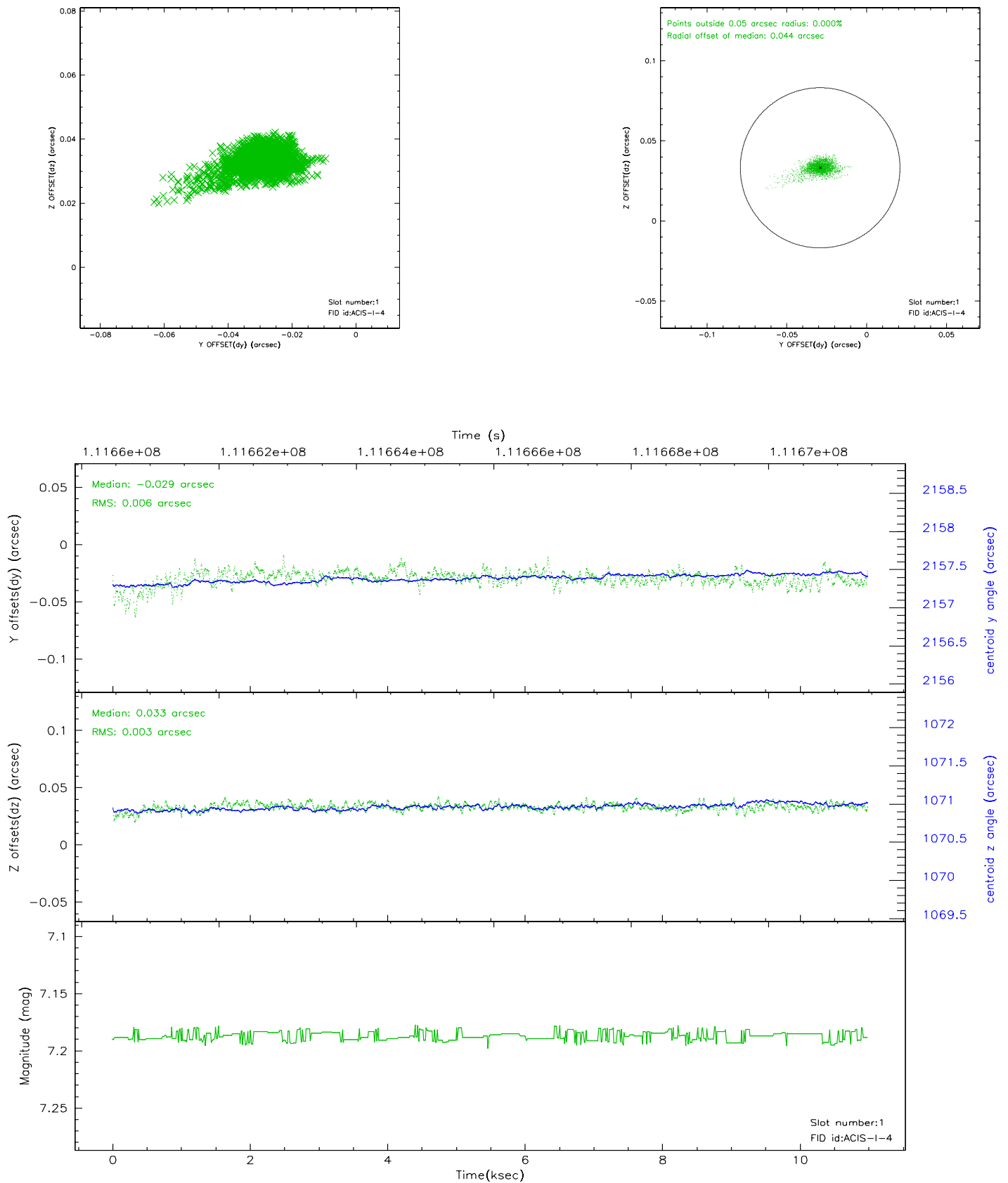


2.5 FID Slots

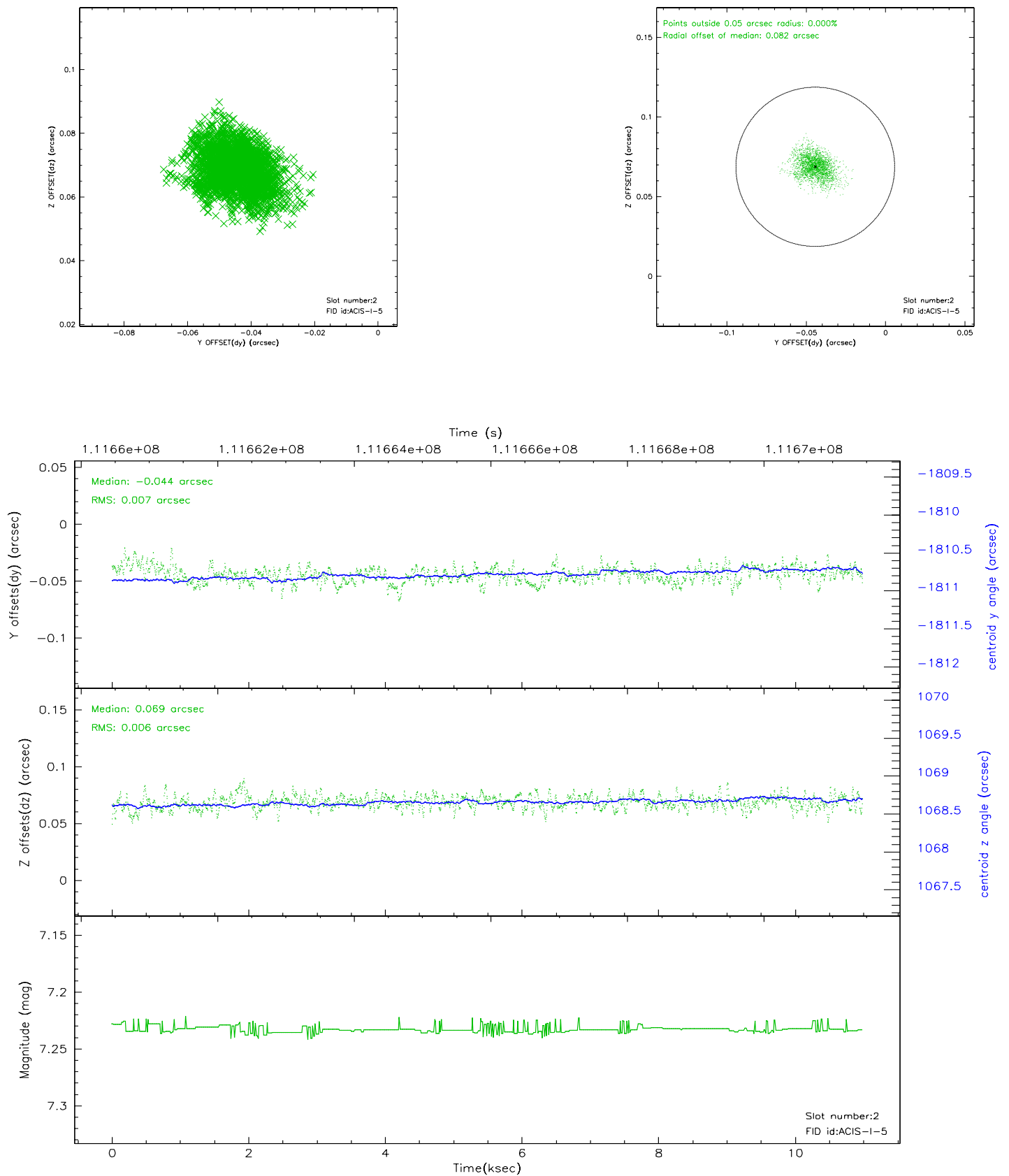
2.5.1 Slot 0



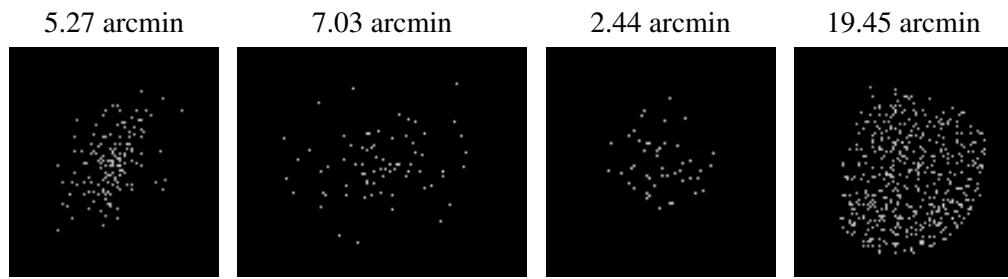
2.5.2 Slot 1



2.5.3 Slot 2



3 Point Sources



A Summary

A.1 Status

V&V Scientist	Jen Lauer
V&V Date (YYYY-MM-DD)	2006.12.14
V&V Edition	1
V&V Disposition and Status	OK
V&V Charge Time	10.6

A.2 Comments

Roll constraint met.