

V&V Reference Report

L2 ASCDS Version : 7.6.9

Observation 2273 - L2 Version 001
Chandra X-Ray Center

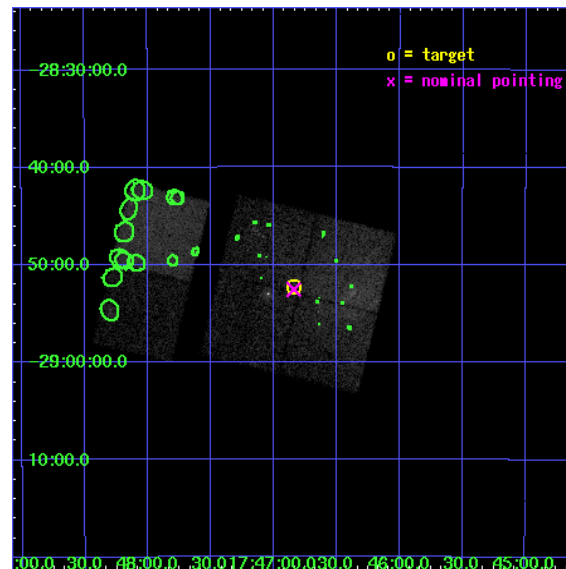
L2 Processing Date : Dec 14 2006

Contents

1	Front	2
2	OBI	3
2.1	OBI	3
2.1.1	Images	3
2.1.2	Bias	3
2.1.3	Parameters	4
2.1.4	Events	4
2.2	Compared Parameters	5
2.3	Aspect	6
2.4	Star Slots	9
2.4.1	Slot 3	9
2.4.2	Slot 4	10
2.4.3	Slot 5	11
2.4.4	Slot 6	12
2.4.5	Slot 7	13
2.5	FID Slots	14
2.5.1	Slot 0	14
2.5.2	Slot 1	15
2.5.3	Slot 2	16
3	Point Sources	17
A	Summary	18
A.1	Status	18
A.2	Comments	18

1 Front

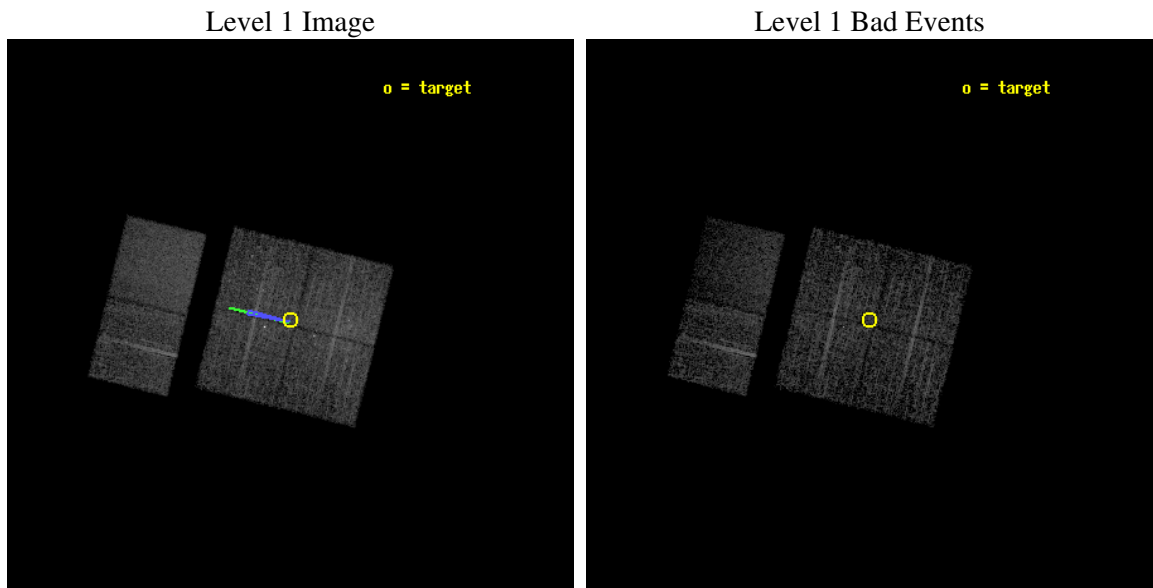
seq_num	900100
obs_id	2273
title	CHANDRA SURVEY OF THE GALACTIC RIDGE AROUND THE MILKY WAY CENTER
observer	Prof. Q. Daniel Wang
object	GCS 10
dtcycle	0
cycle	P
ra_targ	266.7111
dec_targ	-28.871
ra_nom	266.71023933414
dec_nom	-28.875700428436
roll_nom	283.80727876718
revision	2
ontime	11756.759030715
livetime	11607.887868797
ontime0	11756.759040713
ontime1	11760.000010952
ontime2	11760.000010952
ontime3	11756.759030715
ontime6	11760.000010952
ontime7	11760.000010952
l2events	68870



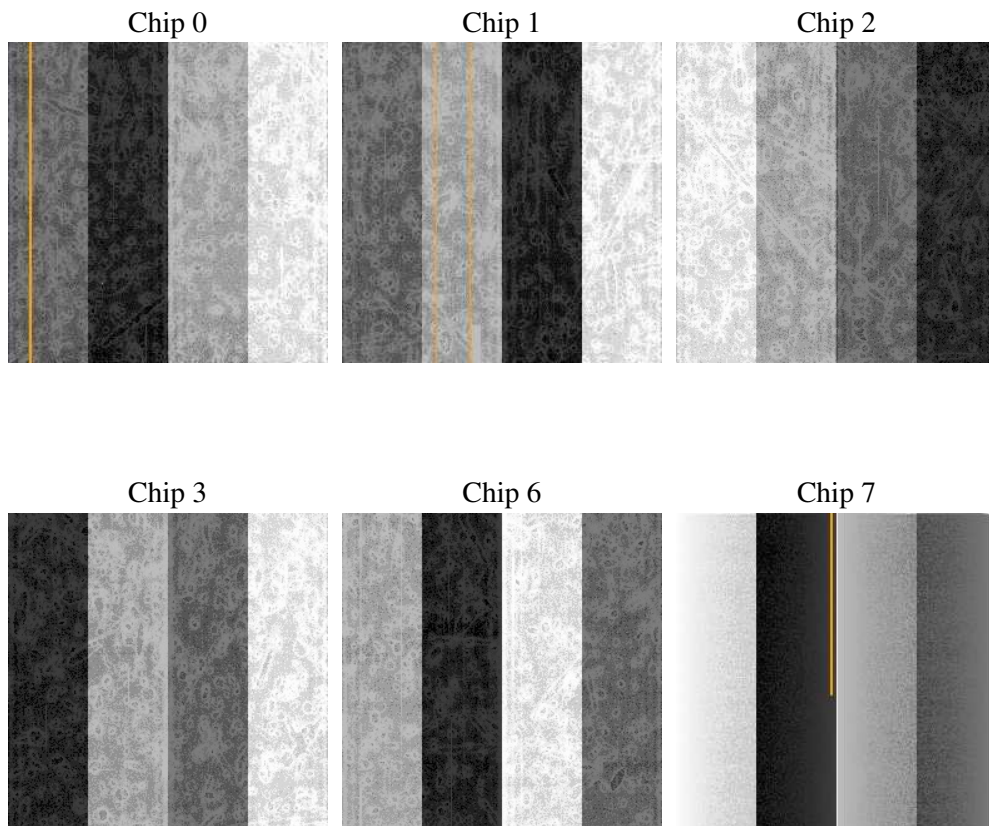
2 OBI

2.1 OBI

2.1.1 Images



2.1.2 Bias



2.1.3 Parameters

obi_num	0
ascdsver	7.6.9
caldbver	3.2.4
date	2006-12-14T12:16:10
revision	2

sched_exp_time	12000.000000
ontime	11761.613149822
ontime0	11761.61315982
ontime1	11764.854130059
ontime2	11764.854130059
ontime3	11761.613149822
ontime6	11764.854130059
ontime7	11764.854130059
l1events	219244

2.1.4 Events

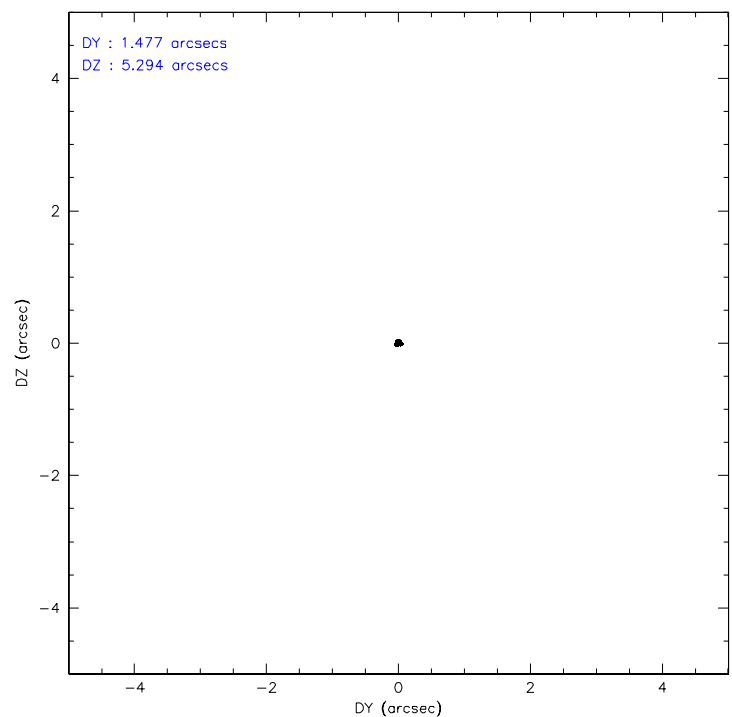
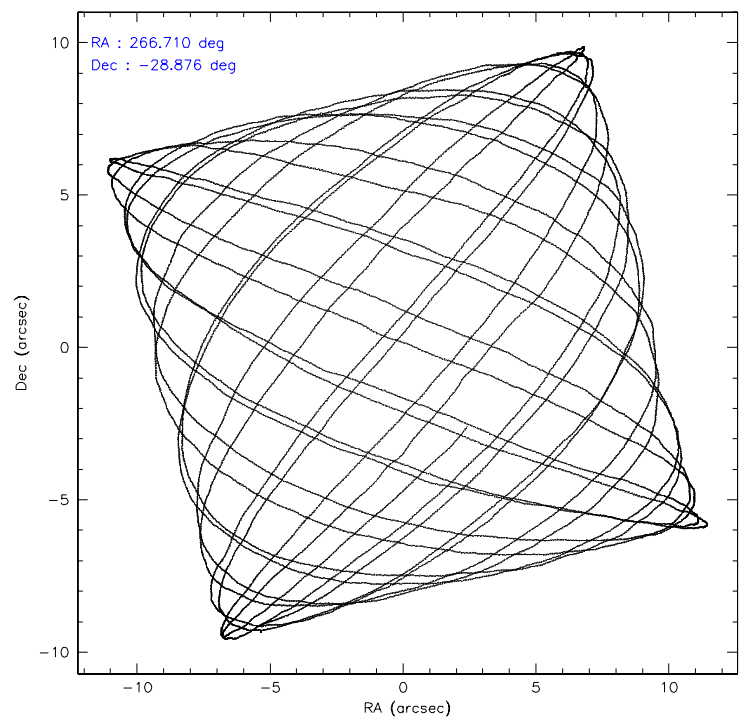
	ccd 0	ccd 1	ccd 2	ccd 3	ccd 6	ccd 7
level 1 events	35846	42904	34929	34321	31953	39291
rejected events	24219	24395	26158	25300	26255	19590
rejected %	67%	56%	74%	73%	82%	49%

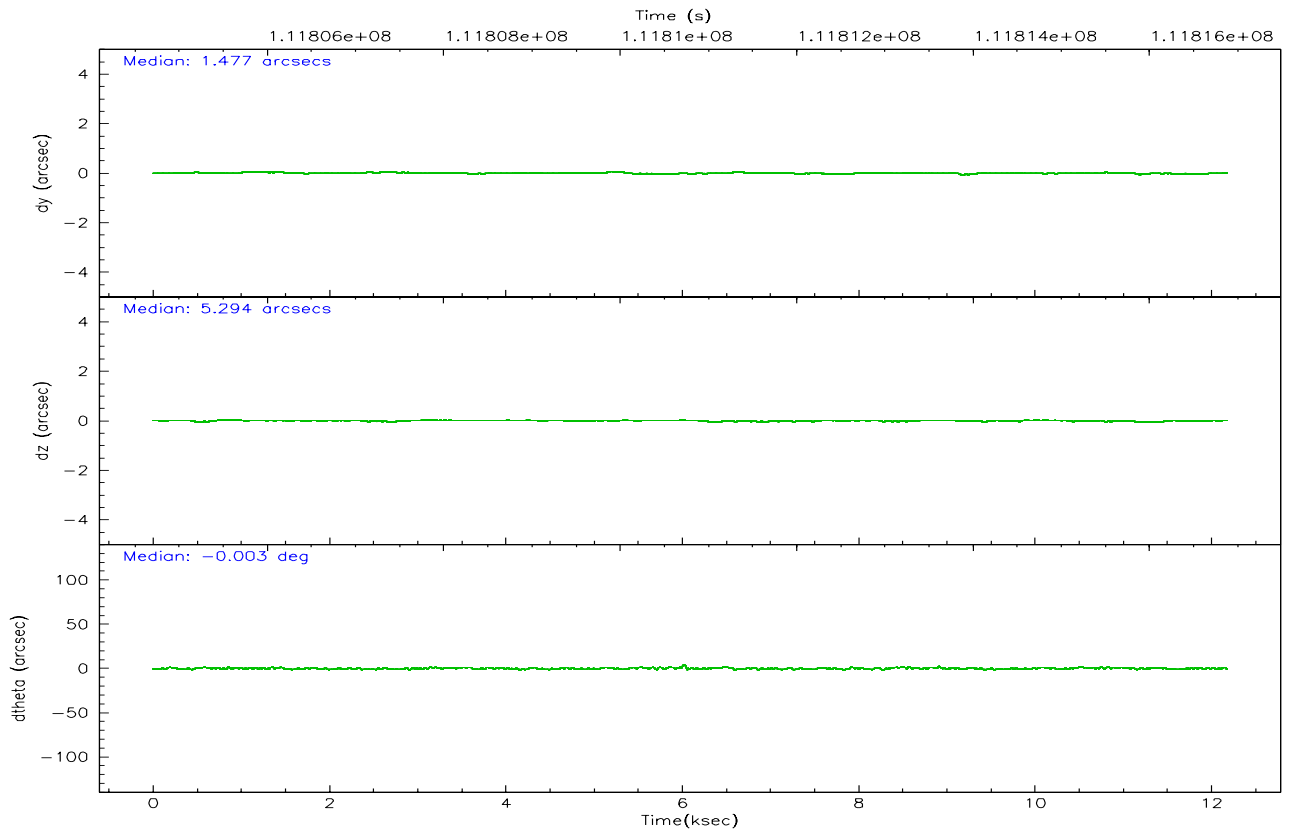
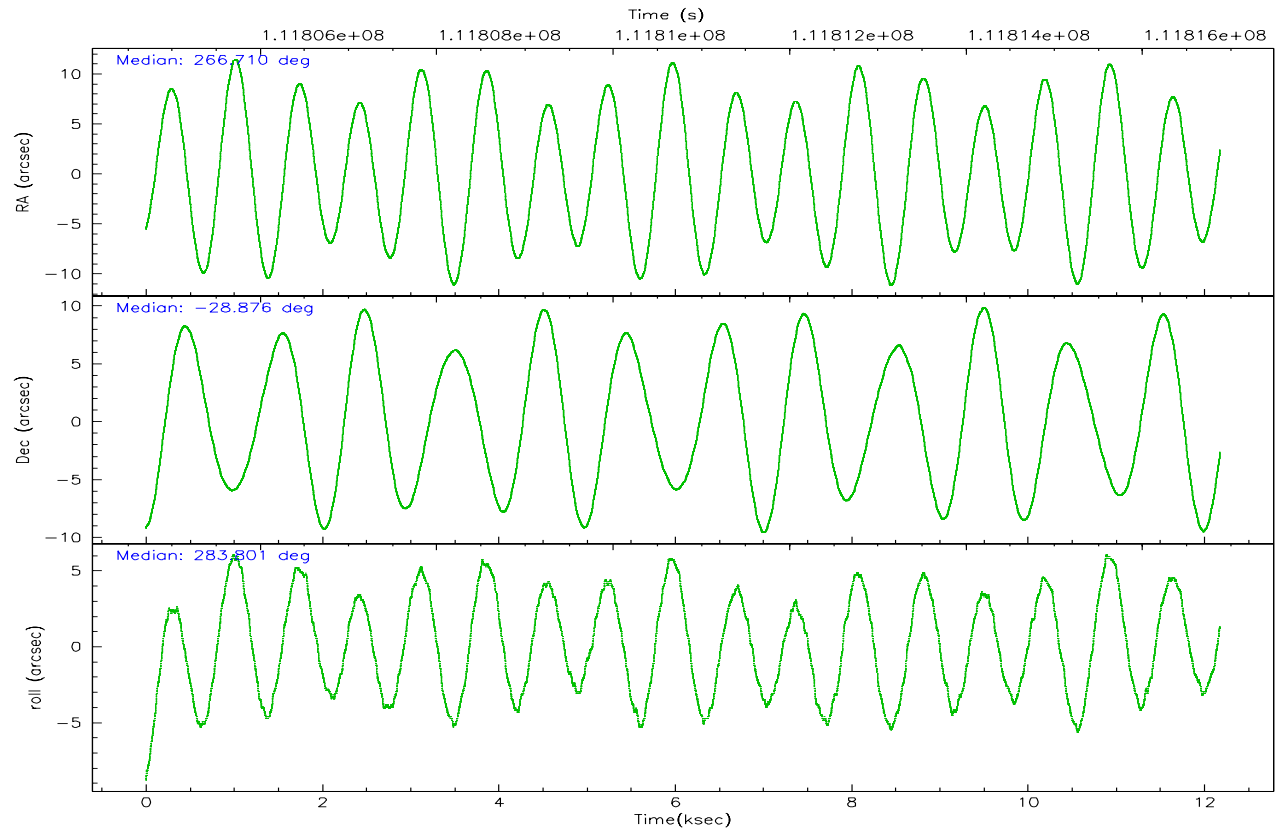
	ccd 0	ccd 1	ccd 2	ccd 3	ccd 6	ccd 7
grade 0 events	7044	11892	4897	5119	2694	1217
	19%	27%	14%	14%	8%	3%
grade 1 events	51	88	80	40	24	37
	0%	0%	0%	0%	0%	0%
grade 2 events	1869	2782	1509	1532	1115	4925
	5%	6%	4%	4%	3%	12%
grade 3 events	738	1004	617	669	482	1120
	2%	2%	1%	1%	1%	2%
grade 4 events	728	1058	624	605	441	1089
	2%	2%	1%	1%	1%	2%
grade 5 events	1175	1447	1202	1450	1431	3407
	3%	3%	3%	4%	4%	8%
grade 6 events	1256	1779	1130	1100	969	11364
	3%	4%	3%	3%	3%	28%
grade 7 events	22985	22854	24870	23806	24797	16132
	64%	53%	71%	69%	77%	41%

2.2 Compared Parameters

Parameter	Planned	Actual	Parameter	Planned	Actual
Instrument	ACIS	ACIS	Obspar format version number	6	6
Detector	ACIS-012367	ACIS-012367	Obspar file type	PREDICTED	ACTUAL
Grating	NONE	NONE	Obspar update status	NONE	UPDATED
Data mode	FAINT	FAINT	Number of optional ACIS chips dropped	0	0
Observation mode	POINTING	POINTING	On-chip summing requested	N	N
Pointing RA	266.688524	266.7102393341404	Subarray requested	NONE	NONE
Pointing Dec	-28.855888	-28.87570042843612	Alternating exposures requested	N	N
Pointing Roll	283.588104	283.807278767184	Primary exposure time	0.000000	3.2
Roll angle	283.600000	283.600000			
Roll tolerance	2.000000	2.000000			
Roll constraint allows 180D rotation	N	N			
SIM focus pos (mm)	-0.782348	-0.7809083437167272			
SIM defocus (mm)	0	0.001439871863259334			
SIM translation stage pos (mm)	-233.592463	-233.5874344608287			
SIM translation stage offset (mm)	0	-0.005018542100998502			
Observation start time	111804884.184000	111804508.57671			
Observation start date	2001-07-18T00:53:40	2001-07-18T00:48:28			
Observation end time	111816884.184000	111817018.1897			
Observation end date	2001-07-18T04:13:40	2001-07-18T04:16:58			
Read mode	TIMED	TIMED			

2.3 Aspect



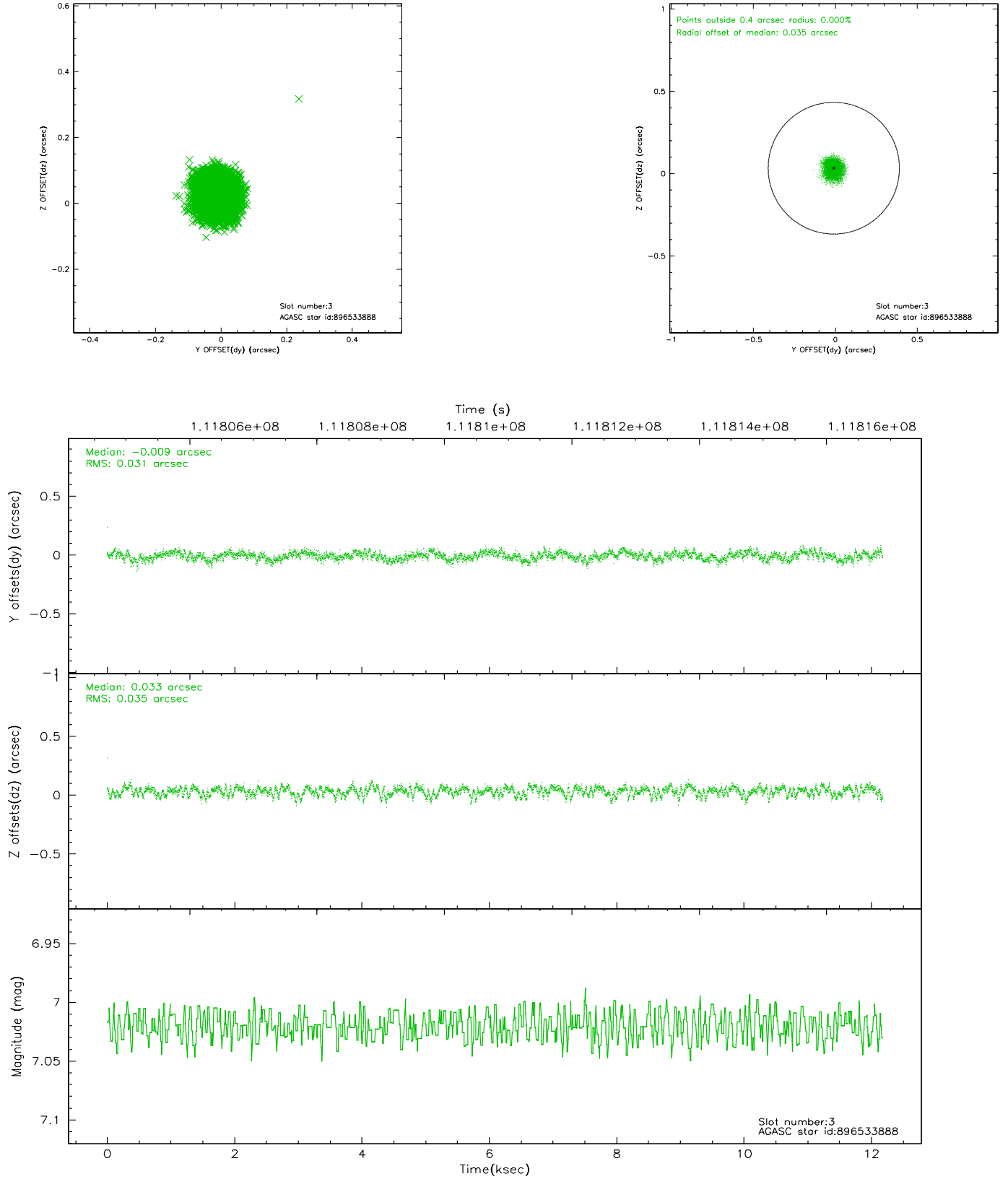


Slot Statistics

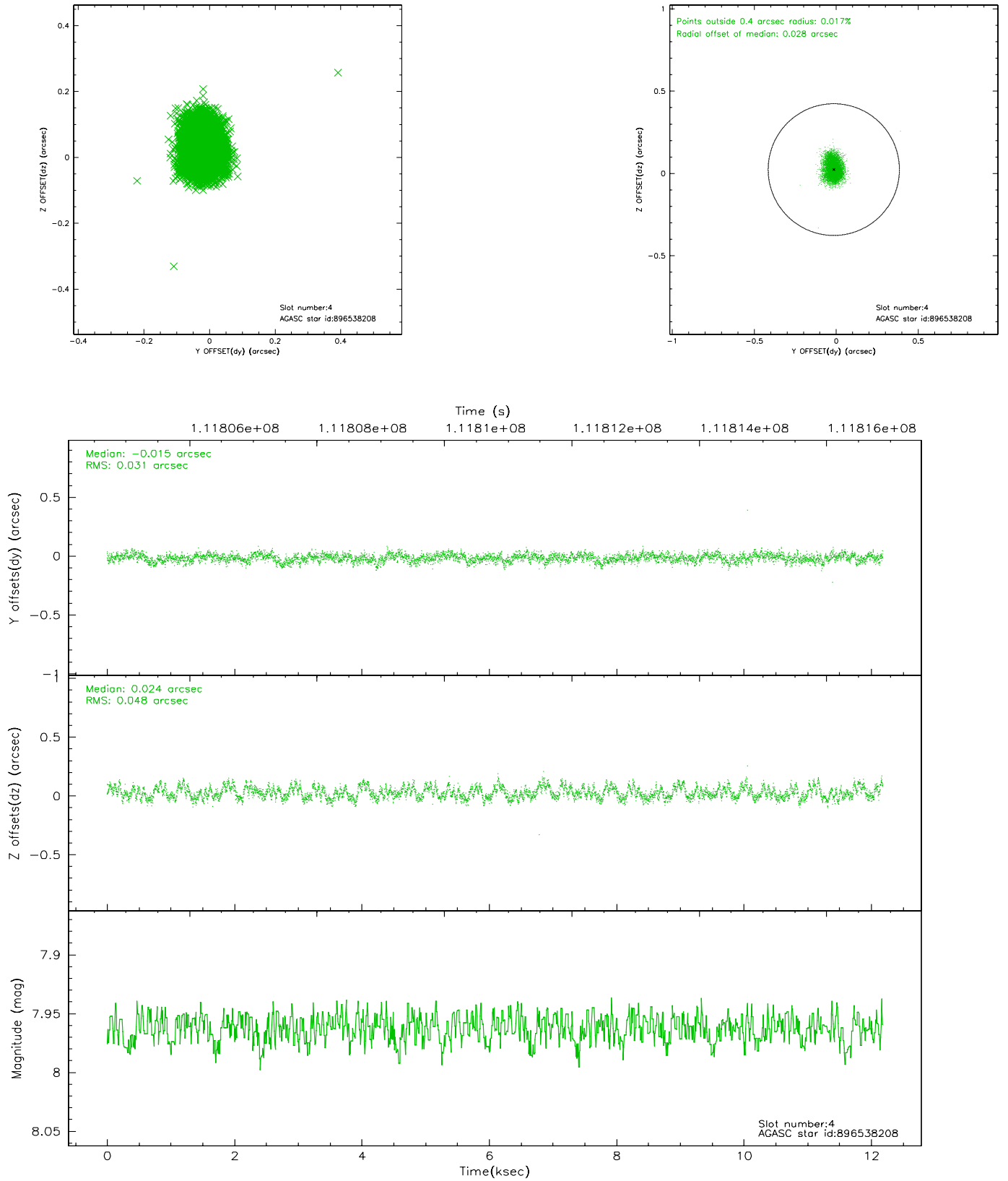
slot	status	id	mag	n_pts	med_dy	med_dz	dr1	dr2	ra	dec	mean_y	mean_z
0	FID	ACIS-I-2	7.15	2972	-0.010	-0.023	0.012	0.021	0.000000	0.000000	-755.82	-835.04
1	FID	ACIS-I-4	7.19	2972	-0.068	0.022	0.009	0.014	0.000000	0.000000	2157.98	1071.01
2	FID	ACIS-I-5	7.23	2972	-0.023	0.069	0.014	0.021	0.000000	0.000000	-1809.15	1069.33
3	GUIDE	896533888	7.02	5944	-0.009	0.033	0.050	0.080	266.666434	-29.392757	1862.25	-520.43
4	GUIDE	896538208	7.96	5944	-0.015	0.024	0.061	0.097	267.176969	-28.671626	-279.30	1655.39
5	GUIDE	896537176	8.02	5943	-0.024	0.020	0.052	0.087	266.498272	-28.678259	-762.46	-432.97
6	GUIDE	896536320	8.97	5944	0.033	-0.064	0.064	0.106	266.369048	-29.307026	1344.24	-1355.96
7	GUIDE	896535464	9.34	5938	0.017	-0.012	0.075	0.121	266.962550	-28.408631	-1360.31	1221.87

2.4 Star Slots

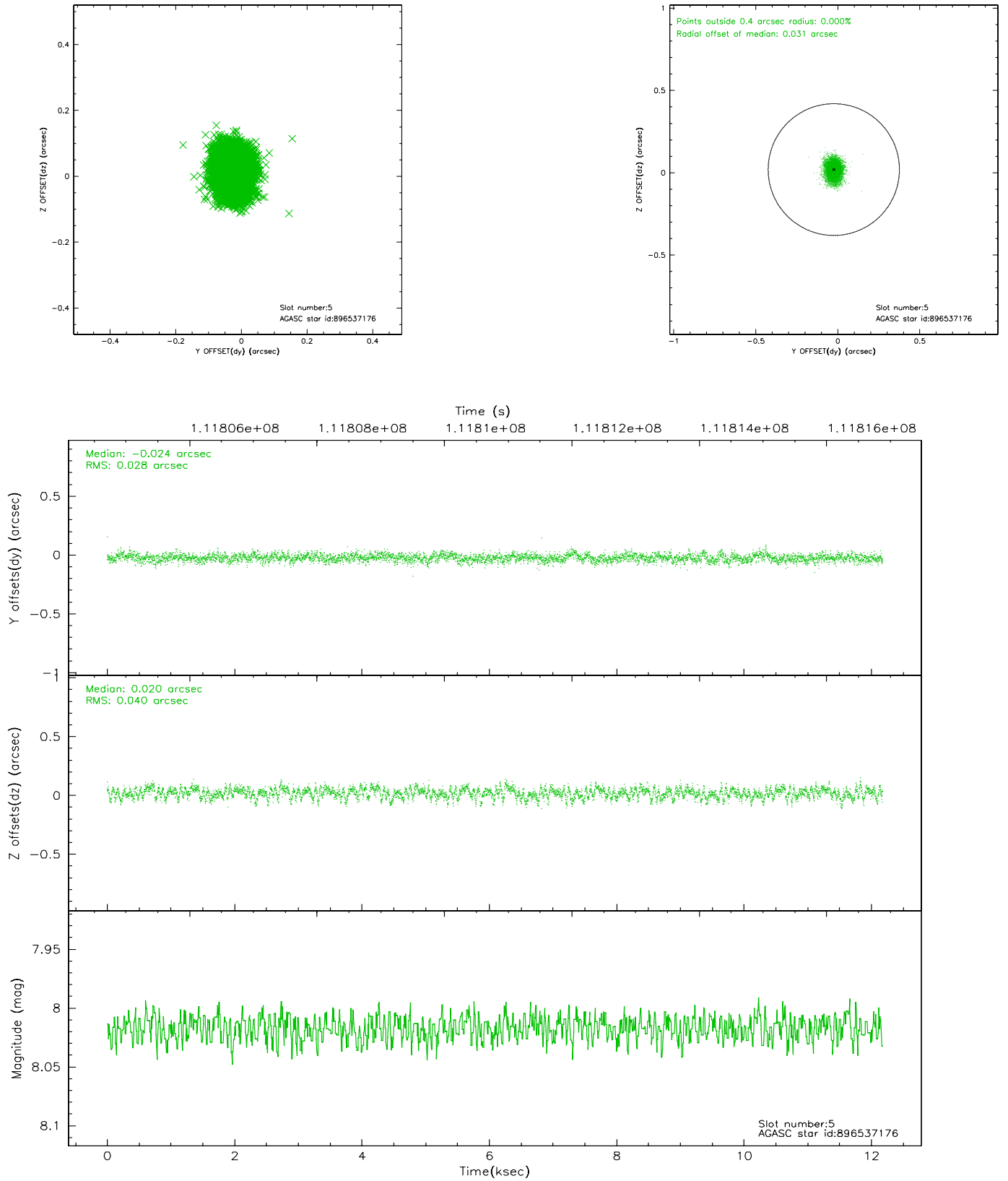
2.4.1 Slot 3



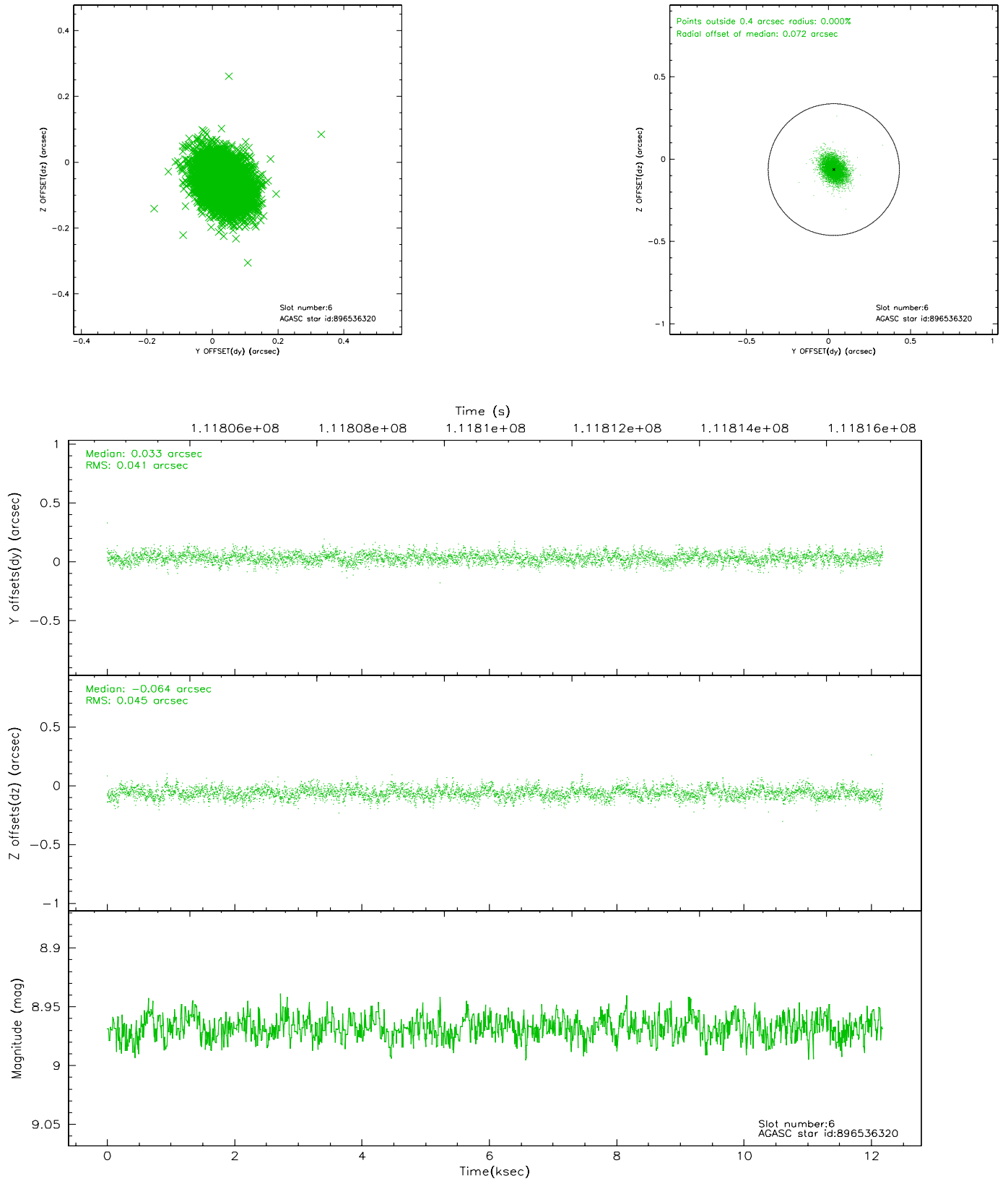
2.4.2 Slot 4



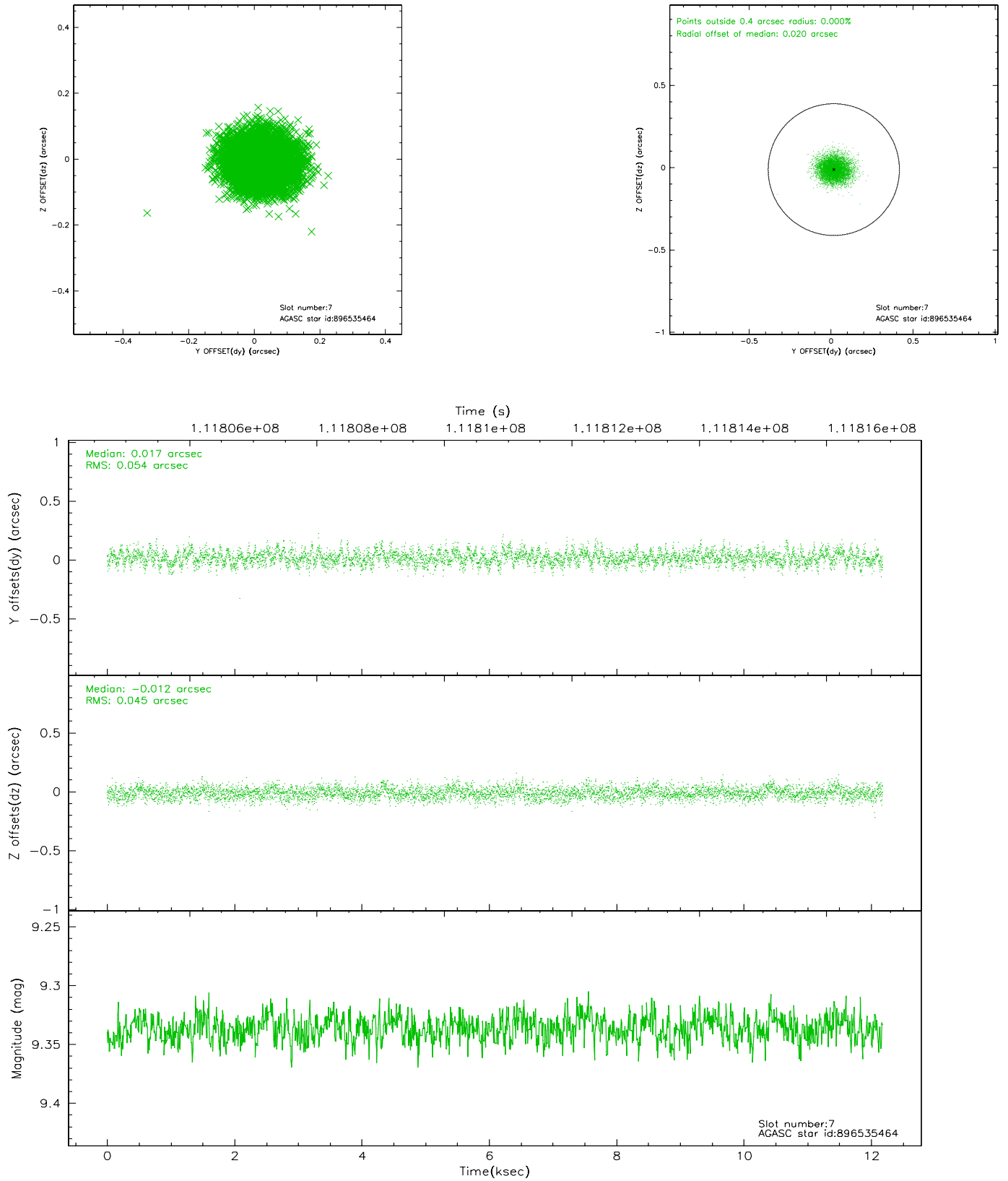
2.4.3 Slot 5



2.4.4 Slot 6

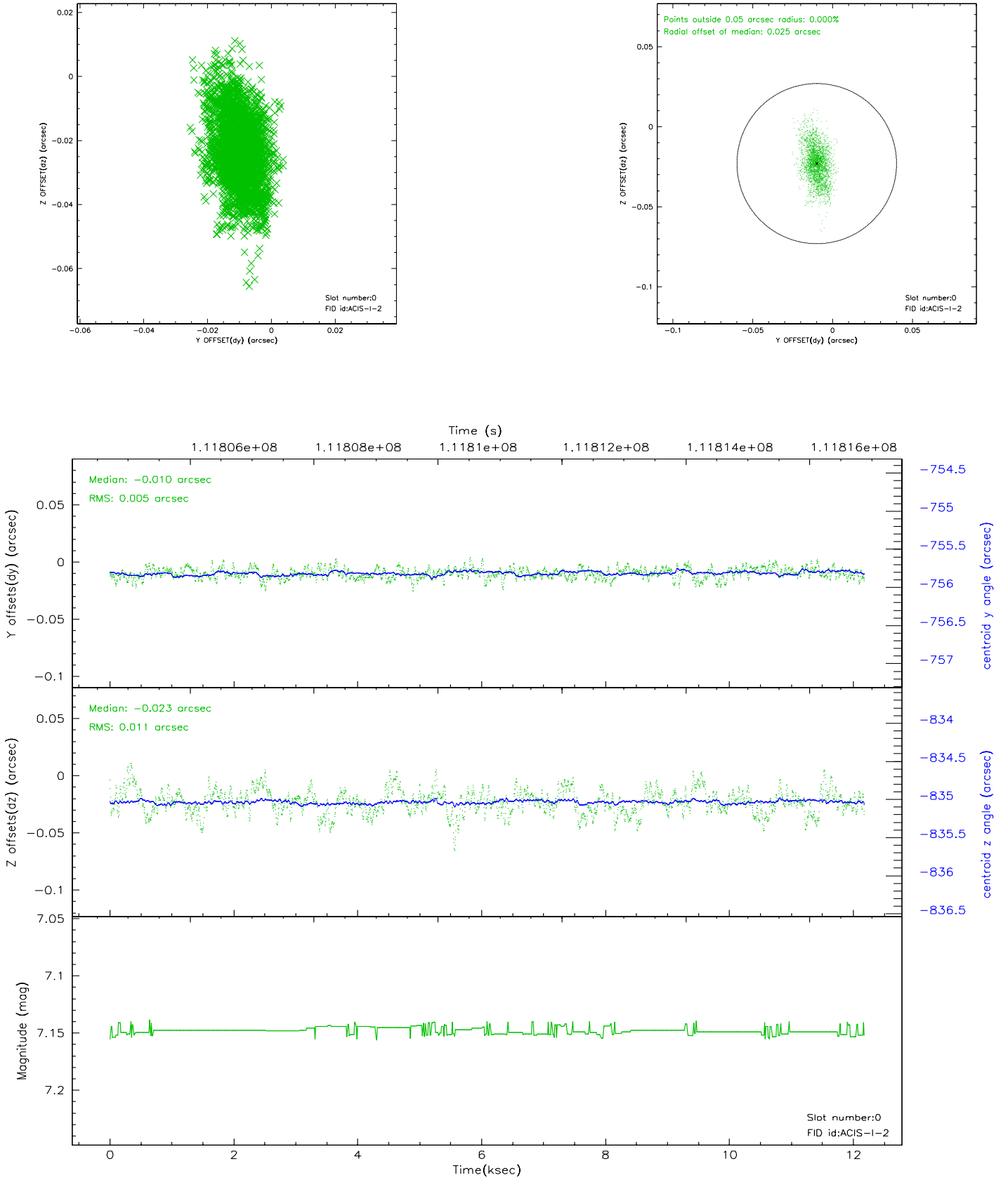


2.4.5 Slot 7

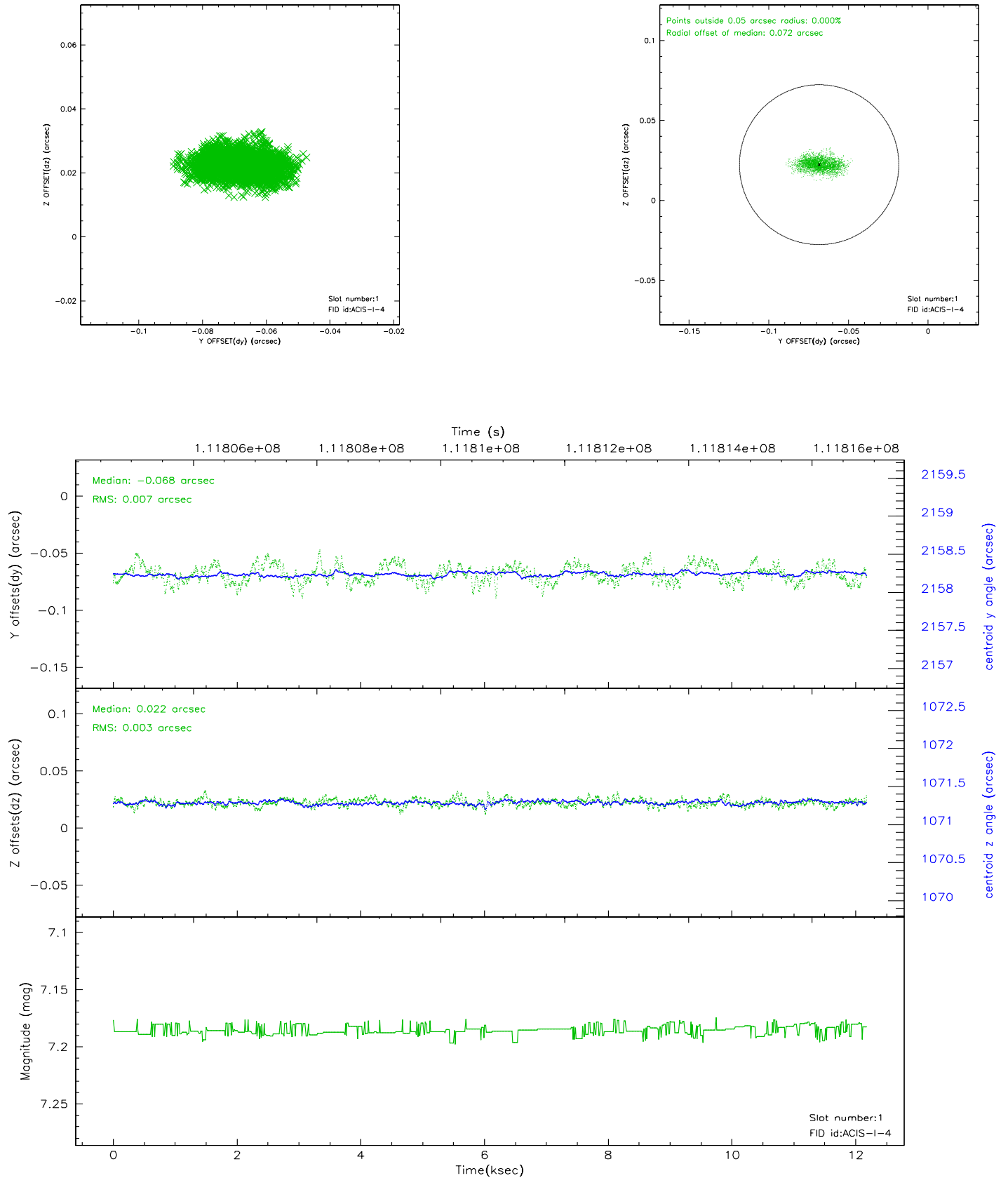


2.5 FID Slots

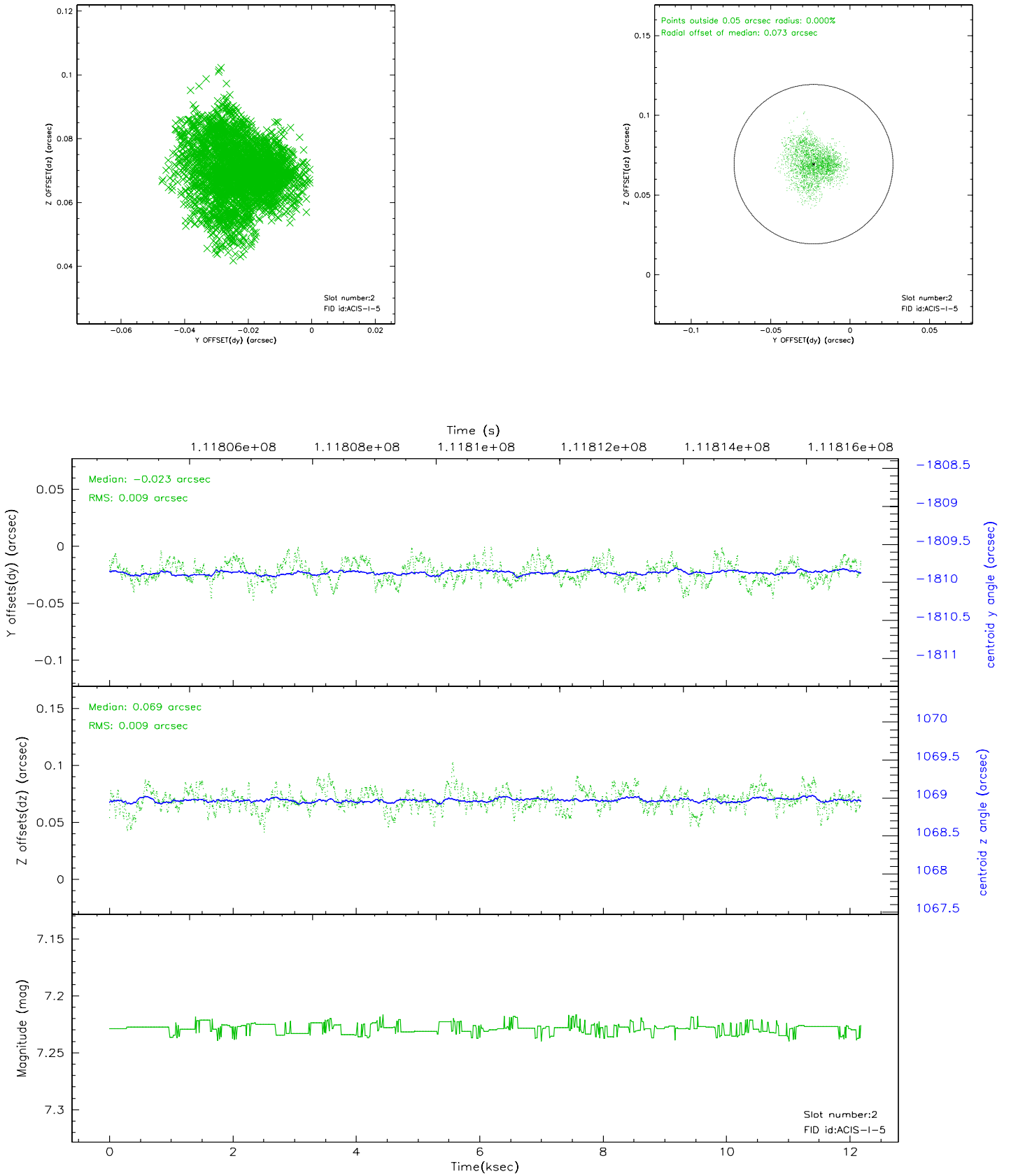
2.5.1 Slot 0



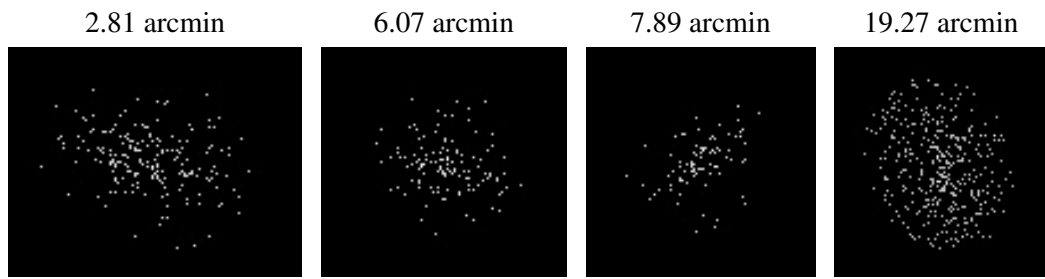
2.5.2 Slot 1



2.5.3 Slot 2



3 Point Sources



A Summary

A.1 Status

V&V Scientist	Jen Lauer
V&V Date (YYYY-MM-DD)	2006.12.14
V&V Edition	1
V&V Disposition and Status	OK
V&V Charge Time	11.759

A.2 Comments

Roll constraint met.