

V&V Reference Report

L2 ASCDS Version : 8.4.5

Observation 2272 - L2 Version 3
Chandra X-Ray Center

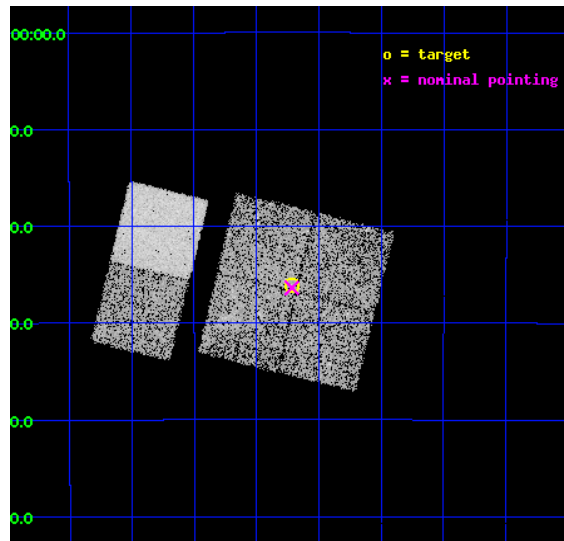
L2 Processing Date : Sep 20 2012

Contents

1	Front	2
2	OBI	3
2.1	OBI	3
2.1.1	Images	3
2.1.2	Bias	3
2.1.3	Parameters	4
2.1.4	Events	4
2.2	Compared Parameters	5
2.3	Aspect	6
2.4	Star Slots	9
2.4.1	Slot 3	9
2.4.2	Slot 4	10
2.4.3	Slot 5	11
2.4.4	Slot 6	12
2.4.5	Slot 7	13
2.5	FID Slots	14
2.5.1	Slot 0	14
2.5.2	Slot 1	15
2.5.3	Slot 2	16
A	Summary	17
A.1	Status	17
A.2	Comments	17

1 Front

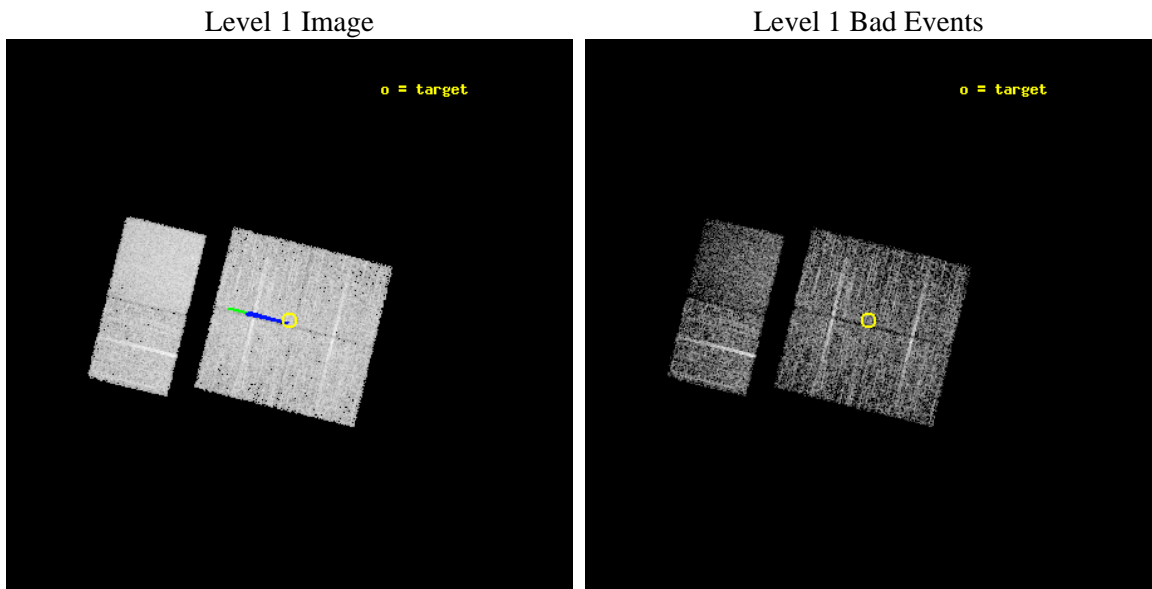
seq_num	900099	Sequence number
obs_id	2272	Observation id
title	CHANDRA SURVEY OF THE GALACTIC RIDGE AROUND THE MILKY WAY CENTER	P
observer	Prof. Q. Daniel Wang	Principal investigator
object	GCS 23	Source name
dtcycle	0	
cycle	P	events from which exps? Prim/Second/Both
ra_targ	266.055	Observer's specified target RA [deg]
dec_targ	-29.435	Observer's specified target Dec [deg]
ra_nom	266.05414281179	Nominal RA [deg]
dec_nom	-29.439658732777	Nominal Dec [deg]
roll_nom	283.80726284036	Nominal Roll [deg]
revision	3	Processing version of data
ontime	11756.759030685	Sum of GTIs [s]
livetime	11607.887868768	Livetime [s]
ontime0	11760.000010937	Sum of GTIs [s]
ontime1	11760.000010937	Sum of GTIs [s]
ontime2	11756.759030685	Sum of GTIs [s]
ontime3	11756.759030685	Sum of GTIs [s]
ontime6	11753.518040523	Sum of GTIs [s]
ontime7	11760.000010937	Sum of GTIs [s]
l2events	56440	Number of level 2 events



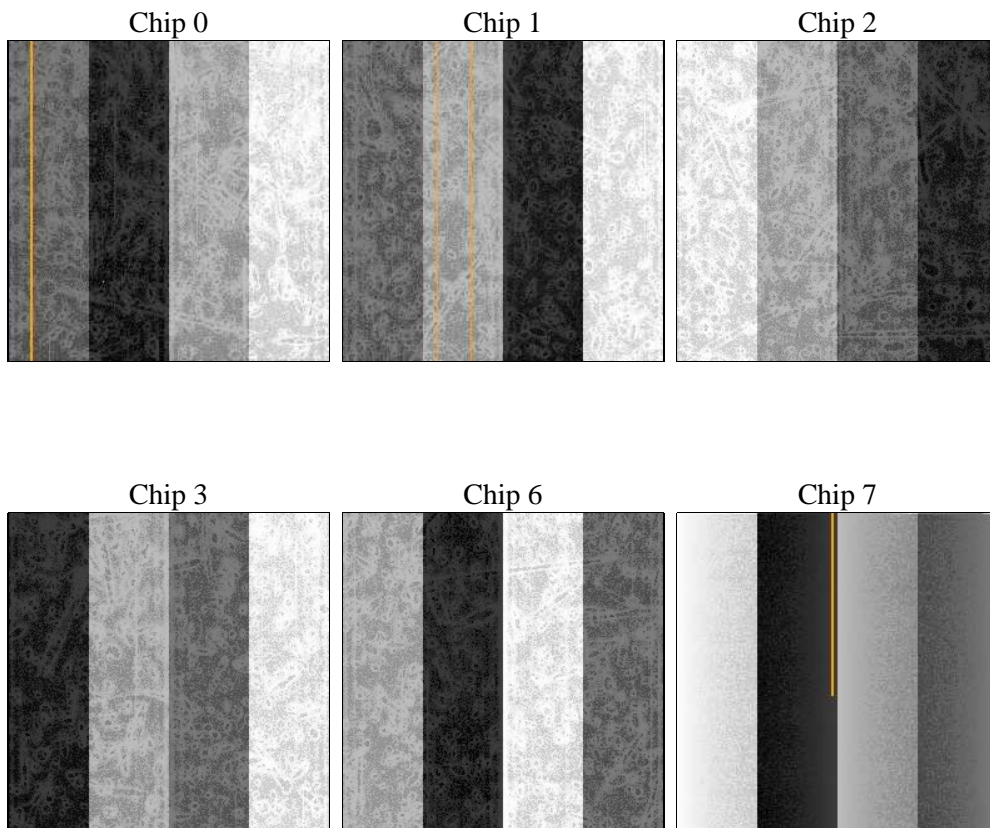
2 OBI

2.1 OBI

2.1.1 Images



2.1.2 Bias



2.1.3 Parameters

obi_num	0	Obi number	sched_exp_time	12000.000000	[s] Scheduled observation exposure time
ascdsver	8.4.5	Processing system revision	ontime	11756.759030685	Sum of GTIs [s]
caldsver	4.5.1.1	 	ontime0	11760.000010937	Sum of GTIs [s]
date	2012-09-20T19:22:55	Date and time of file creation	ontime1	11760.000010937	Sum of GTIs [s]
revision	3	Processing version of data	ontime2	11756.759030685	Sum of GTIs [s]
			ontime3	11756.759030685	Sum of GTIs [s]
			ontime6	11753.518040523	Sum of GTIs [s]
			ontime7	11760.000010937	Sum of GTIs [s]
			l1events	203106	Number of level 1 events

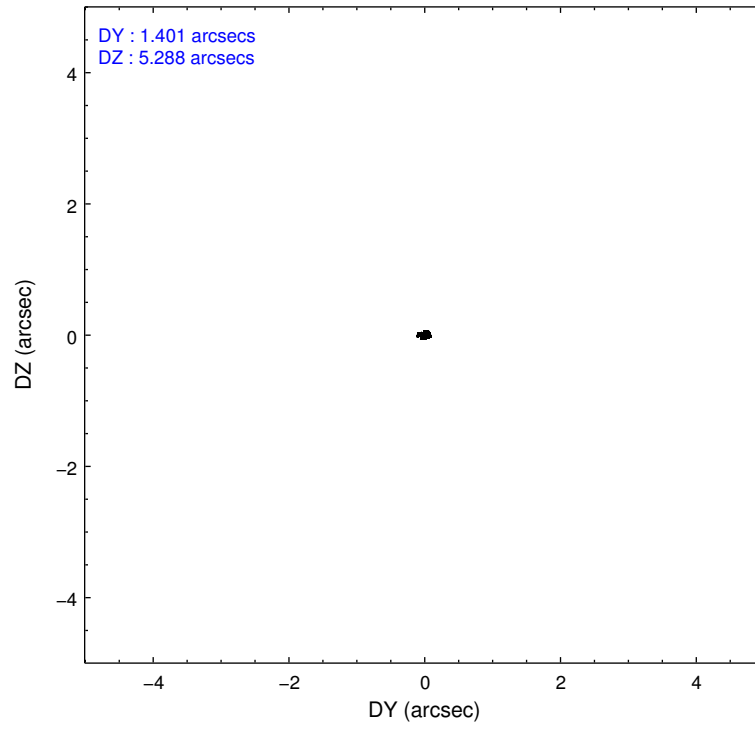
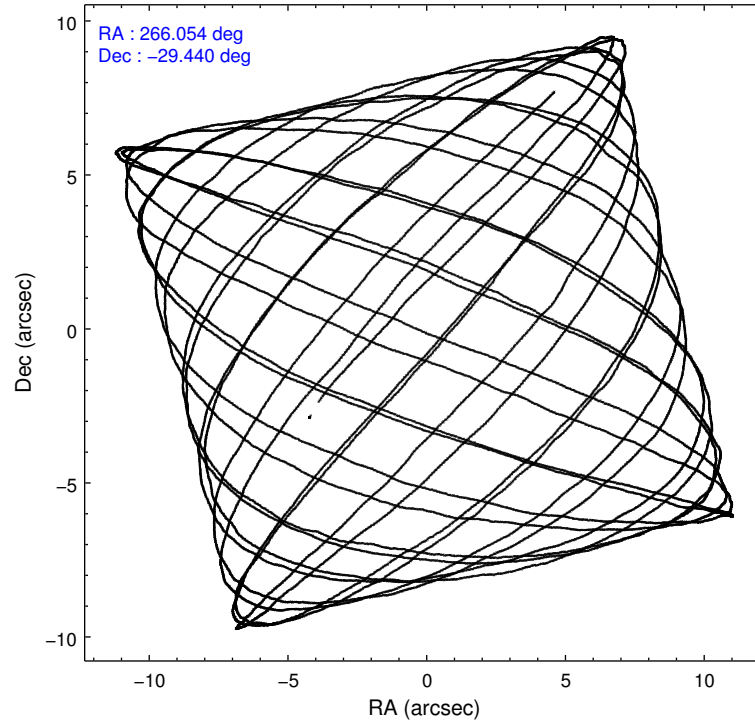
2.1.4 Events

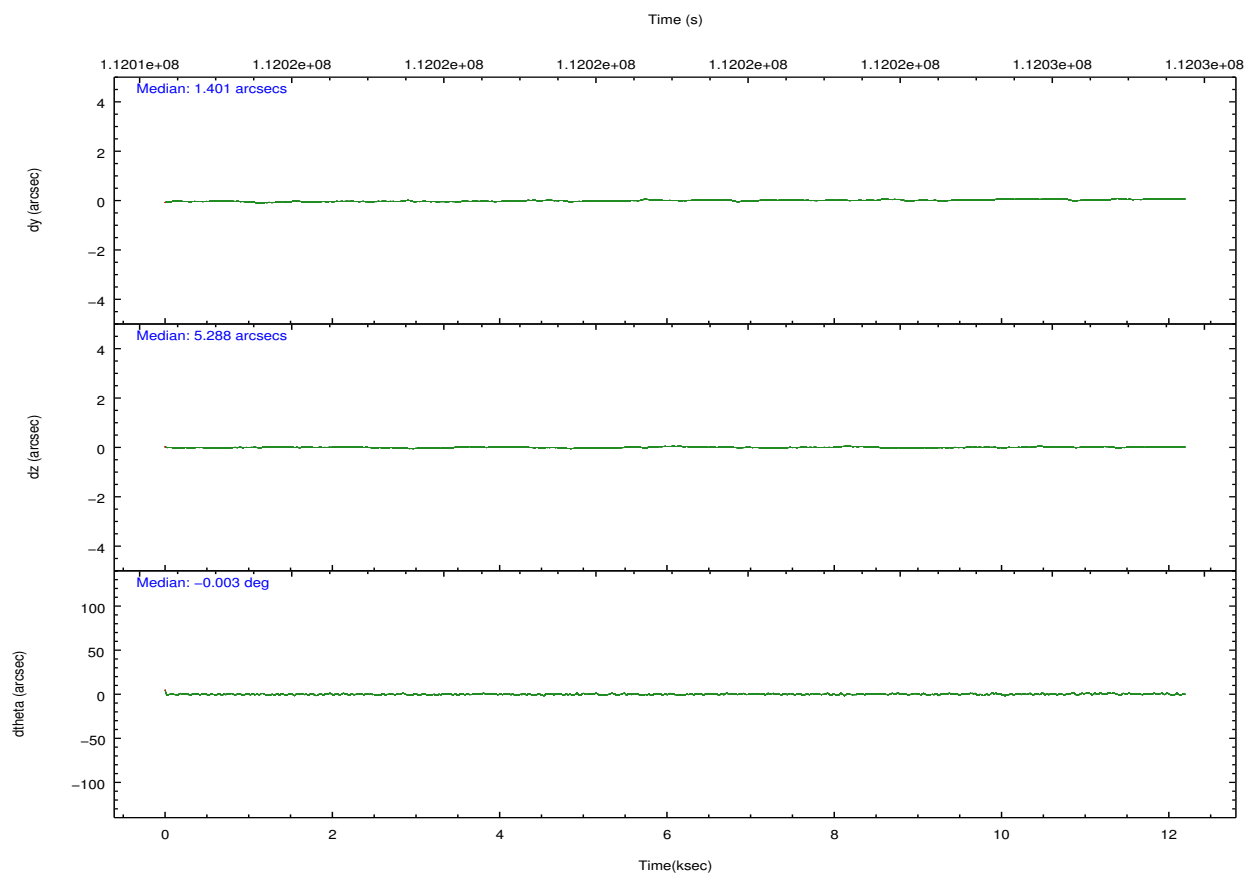
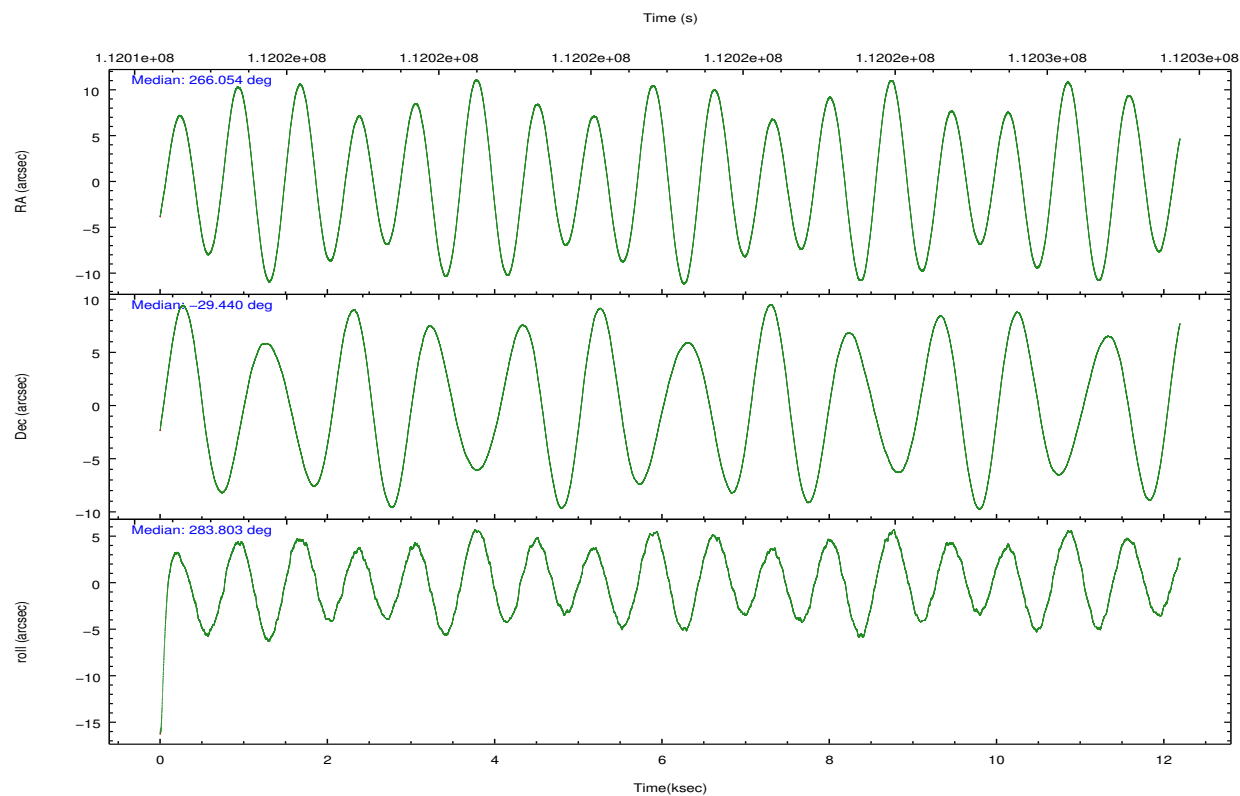
	ccd 0	ccd 1	ccd 2	ccd 3	ccd 6	ccd 7		ccd 0	ccd 1	ccd 2	ccd 3	ccd 6	ccd 7
level 1 events	30938	29409	32646	32822	34145	43146	grade 0 events	3657	3134	4062	3544	3548	2569
rejected events	23965	22815	25078	25768	27272	18211		11%	10%	12%	10%	10%	5%
rejected %	77%	77%	76%	78%	79%	42%	grade 1 events	33	24	28	39	31	41
								0%	0%	0%	0%	0%	0%
							grade 2 events	1295	1280	1376	1366	1247	5094
								4%	4%	4%	4%	3%	11%
							grade 3 events	543	550	559	495	529	2371
								1%	1%	1%	1%	1%	5%
							grade 4 events	496	565	548	583	545	2350
								1%	1%	1%	1%	1%	5%
							grade 5 events	1231	1364	1133	1302	1430	4319
								3%	4%	3%	3%	4%	10%
							grade 6 events	986	1065	1024	1068	1010	12554
								3%	3%	3%	3%	2%	29%
							grade 7 events	22697	21427	23916	24425	25805	13848
								73%	72%	73%	74%	75%	32%

2.2 Compared Parameters

Parameter	Planned	Actual	Parameter	Planned	Actual
Instrument	ACIS	ACIS	Obspar format version number	7	7
Detector	ACIS-012367	ACIS-012367	Obspar file type	PREDICTED	ACTUAL
Grating	NONE	NONE	Obspar update status	NONE	UPDATED
Data mode	FAINT	FAINT	Number of optional ACIS chips dropped	0	0
Observation mode	POINTING	POINTING	On-chip summing requested	N	N
[deg] Pointing RA	266.032297	266.0541428117869	Subarray requested	NONE	NONE
[deg] Pointing Dec	-29.419892	-29.43965873277699	Alternating exposures requested	N	N
[deg] Pointing Roll	283.587851	283.8072628403649	[s] Primary exposure time	0.000000	3.2
[deg] Roll angle	283.600000	283.600000			
[deg] Roll tolerance	2.000000	2.000000			
Roll constraint allows 180D rotation	N	N			
[mm] SIM focus pos	-0.782348	-0.7809083437167272			
[mm] SIM defocus	0	0.001439871863259334			
[mm] SIM translation stage pos	-233.592463	-233.5874344608287			
[mm] SIM translation stage offset	0	-0.005018542100998502			
[s] Observation start time (MET)	112015136.184000	112014760.17244			
Observation start date	2001-07-20T11:17:52	2001-07-20T11:12:40			
[s] Observation end time (MET)	112027136.184000	112027270.29793			
Observation end date	2001-07-20T14:37:52	2001-07-20T14:41:10			
Read mode	TIMED	TIMED			

2.3 Aspect



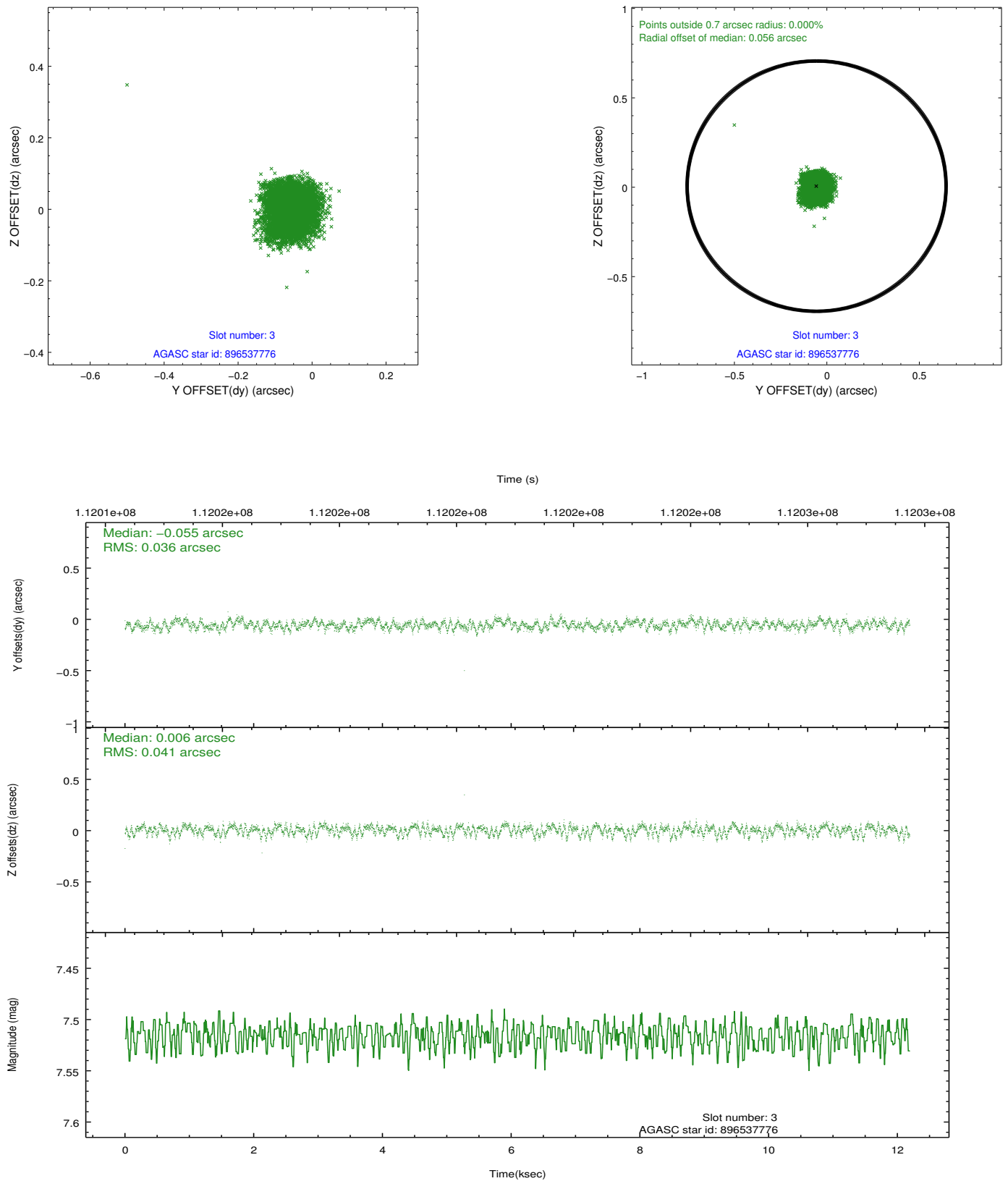


Slot Statistics

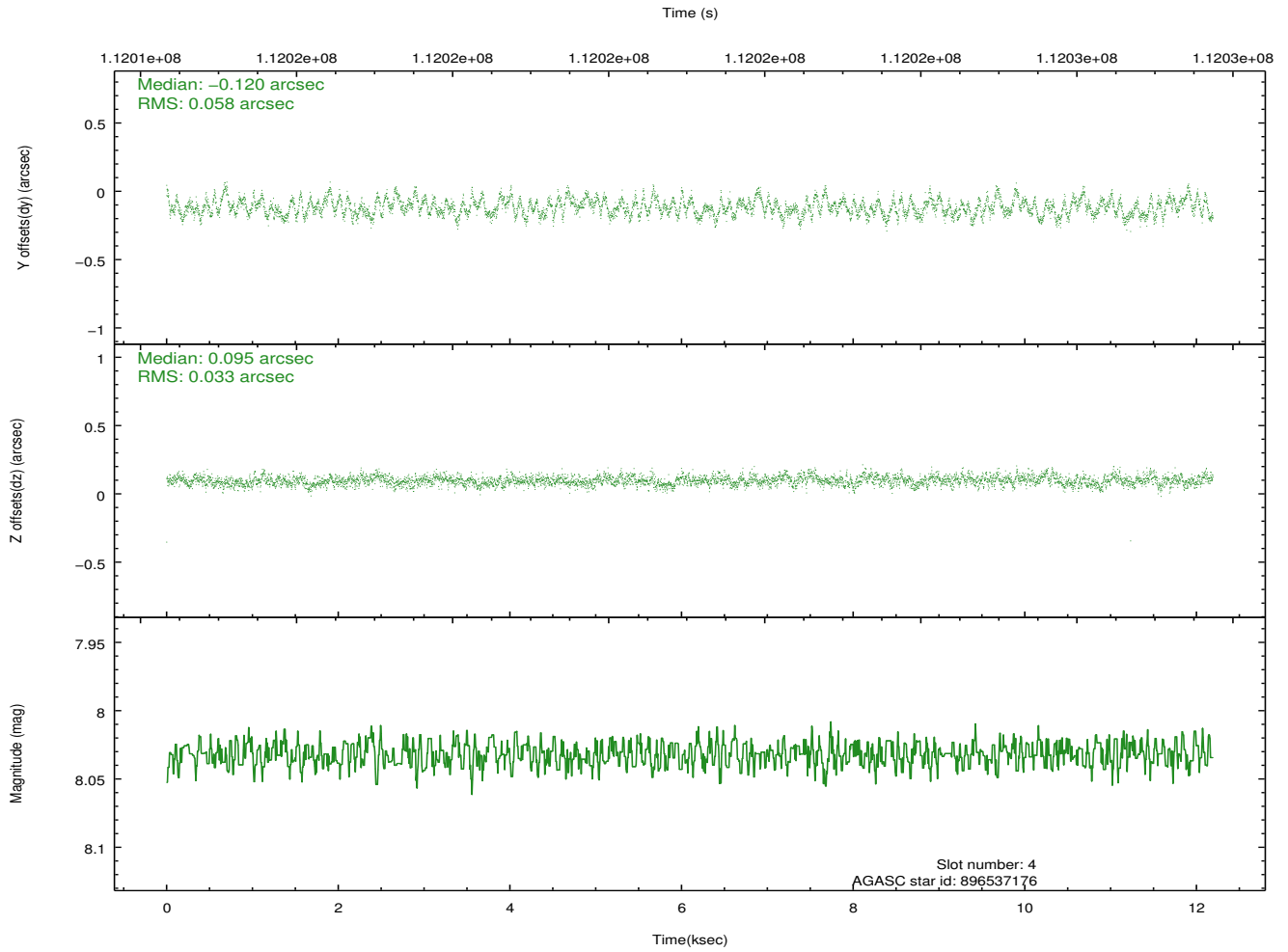
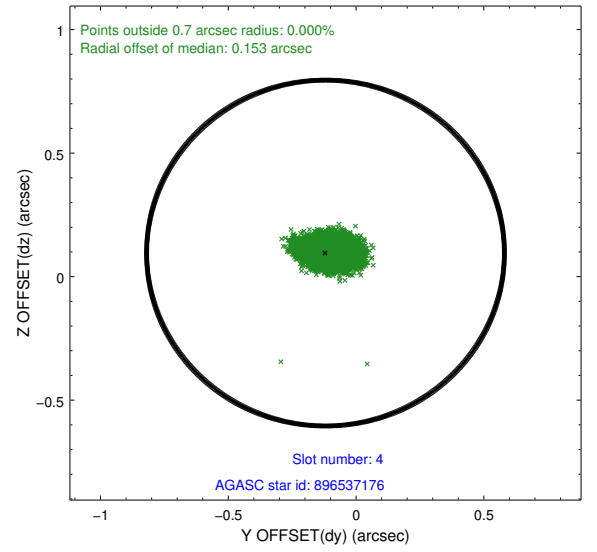
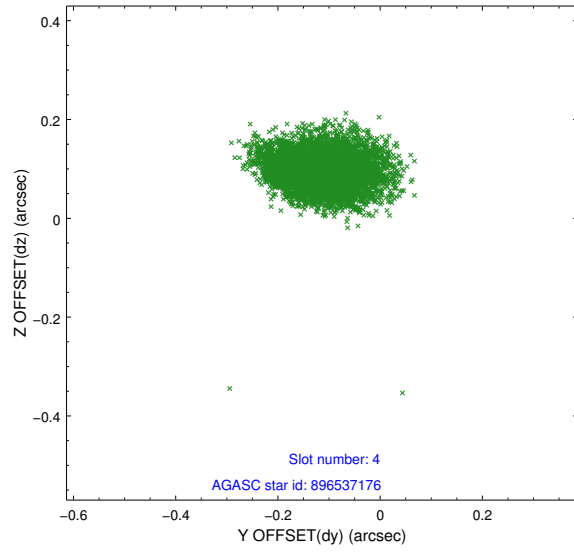
slot	status	id	mag	n_pts	med_dy	med_dz	dr1	dr2	ra	dec	mean_y	mean_z
0	FID	ACIS-I-2	7.15	2973	-0.023	-0.050	0.009	0.015	0.000000	0.000000	-755.75	-835.06
1	FID	ACIS-I-4	7.19	2972	-0.036	0.036	0.006	0.011	0.000000	0.000000	2158.09	1071.03
2	FID	ACIS-I-5	7.23	2973	-0.042	0.083	0.009	0.014	0.000000	0.000000	-1809.09	1069.34
3	GUIDE	896537776	7.52	5947	-0.055	0.006	0.058	0.091	266.655684	-29.665673	1322.67	1687.10
4	GUIDE	896537176	8.03	5947	-0.120	0.095	0.070	0.118	266.498272	-28.678259	-2247.10	2058.06
5	GUIDE	896536320	8.97	5943	0.030	0.057	0.068	0.113	266.369048	-29.307026	-145.98	1123.67
6	GUIDE	896541168	8.15	5946	0.082	-0.078	0.049	0.078	266.319970	-29.850801	1719.56	509.21
7	GUIDE	896403224	8.28	5945	0.061	-0.075	0.057	0.093	265.612825	-29.438915	-240.07	-1294.33

2.4 Star Slots

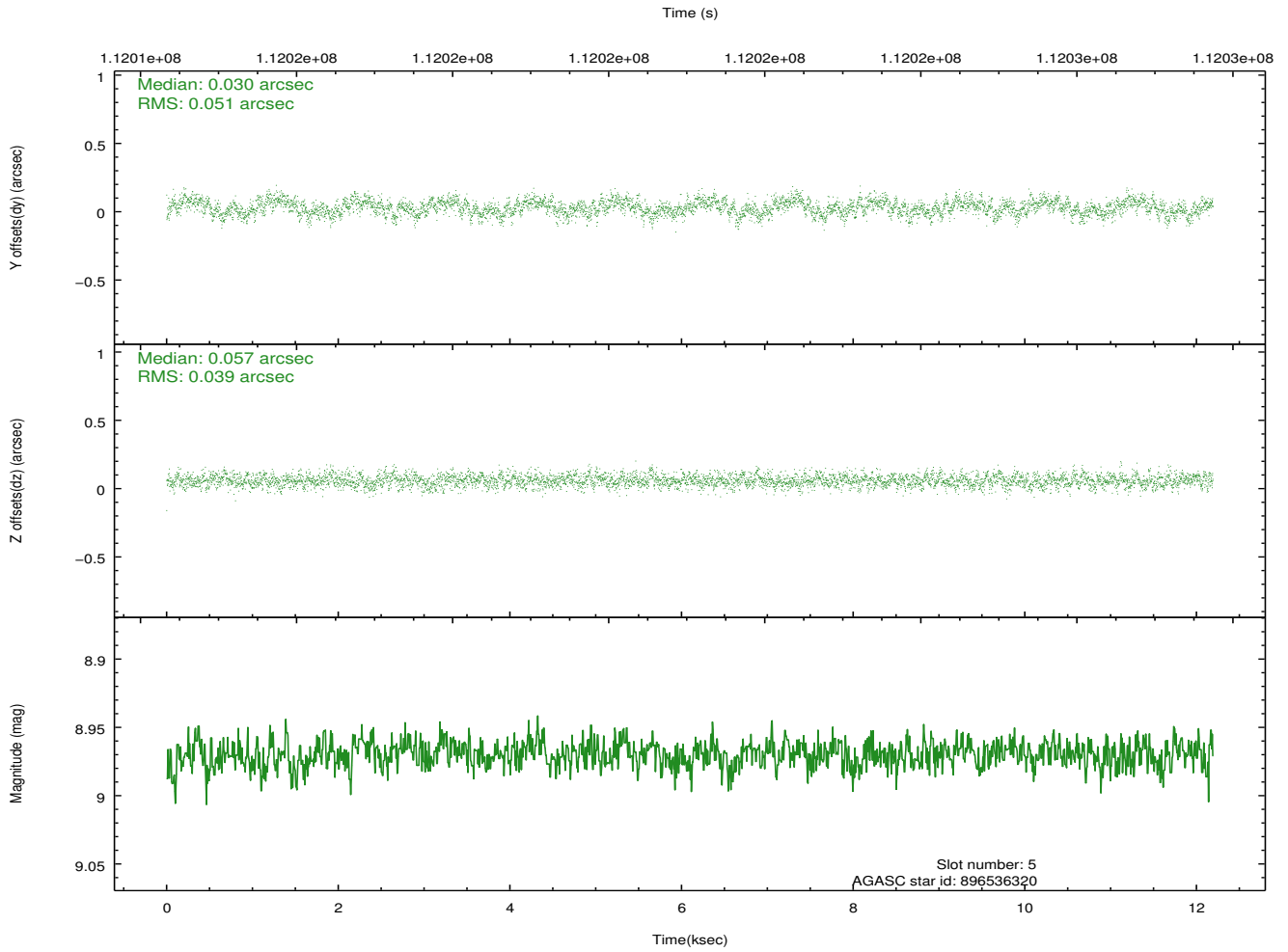
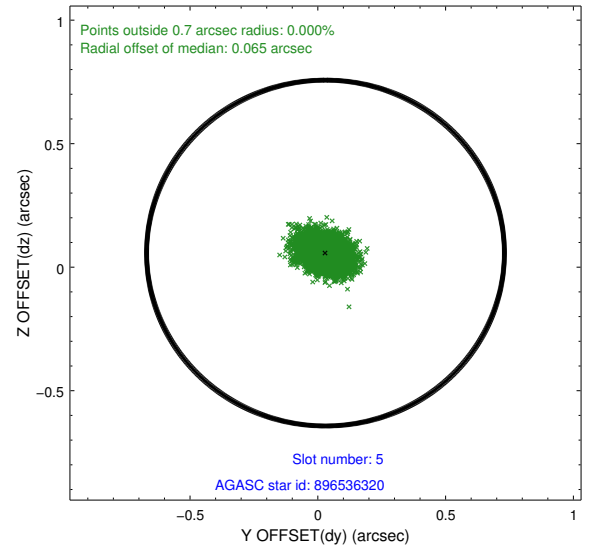
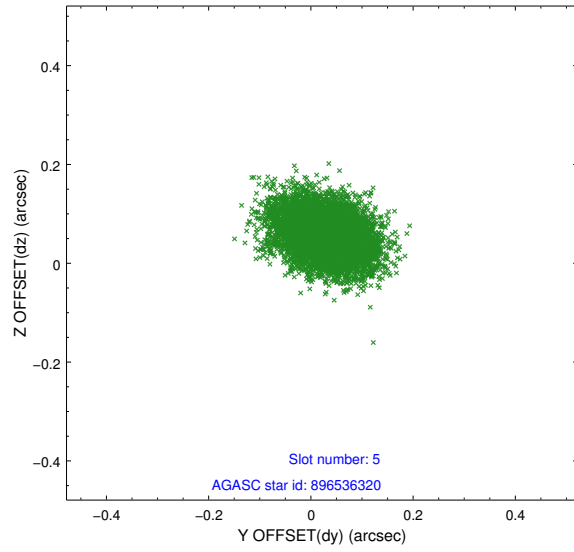
2.4.1 Slot 3



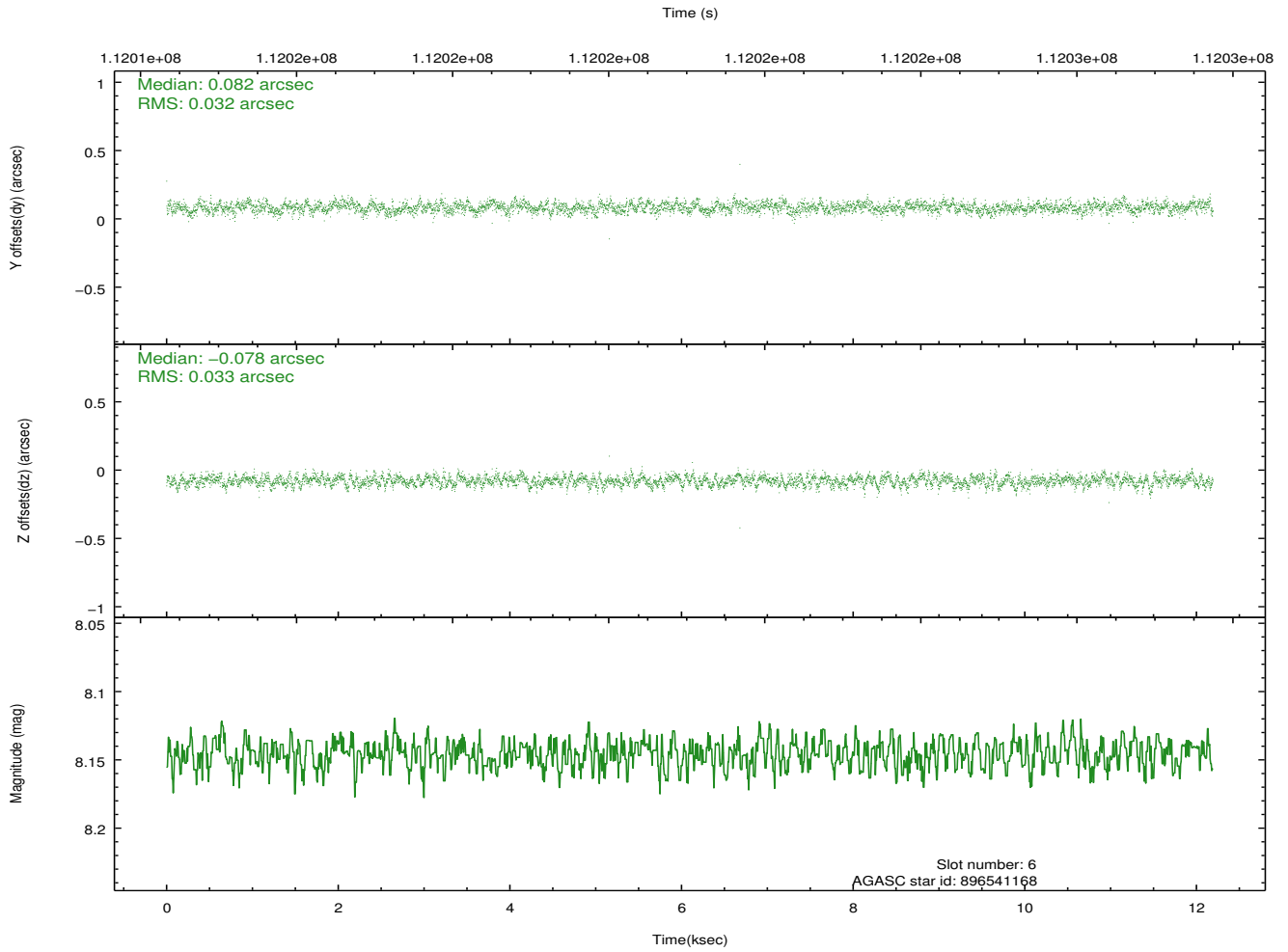
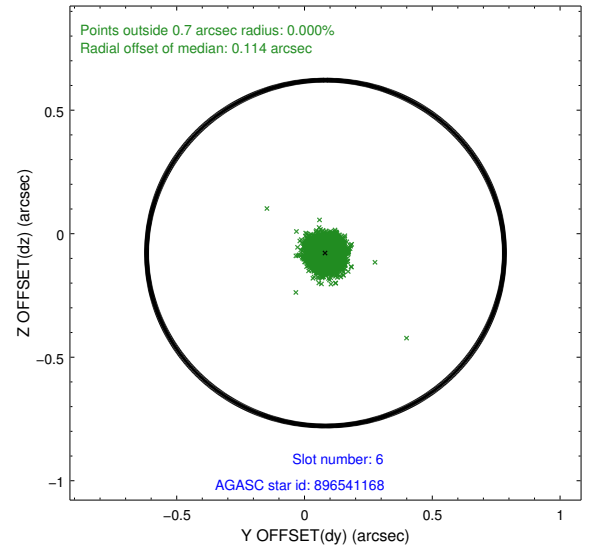
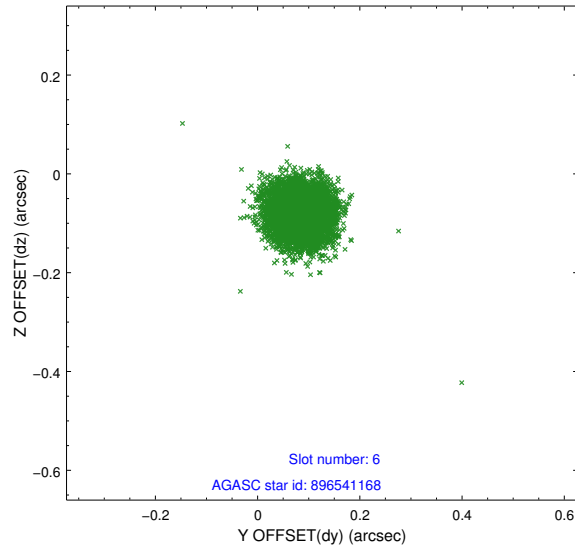
2.4.2 Slot 4



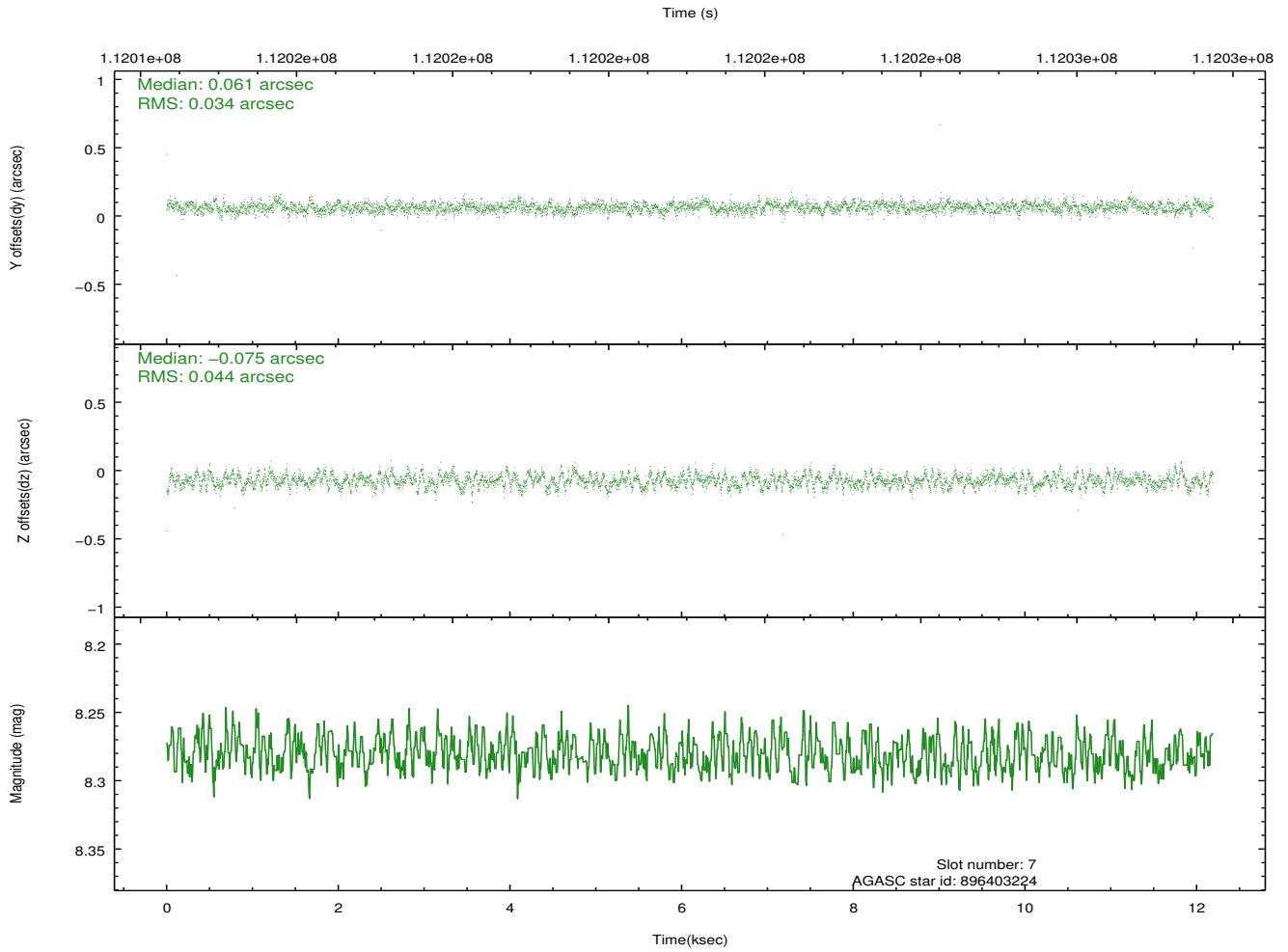
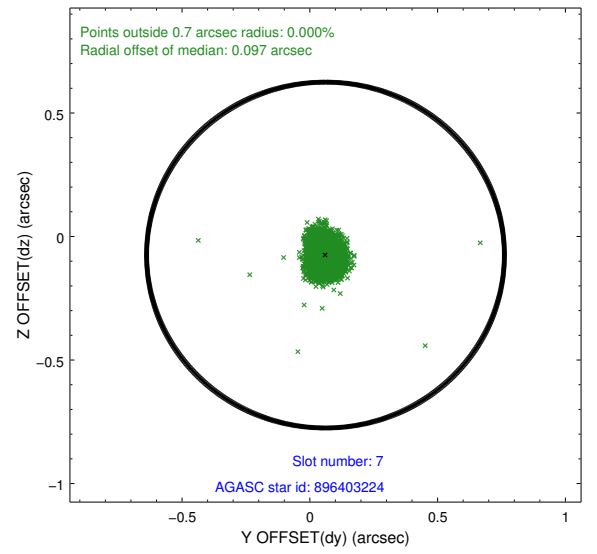
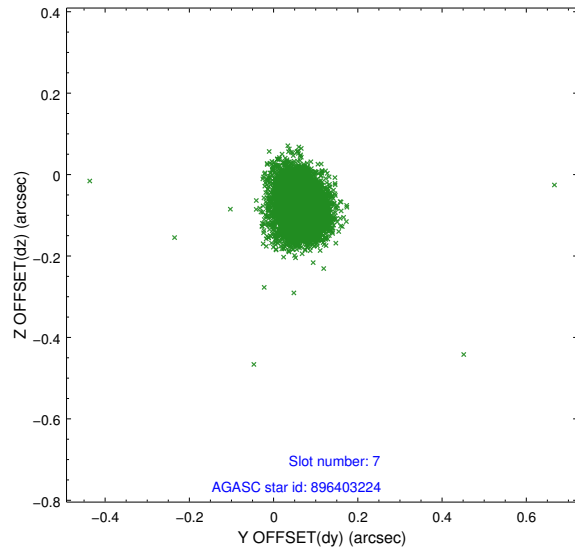
2.4.3 Slot 5



2.4.4 Slot 6

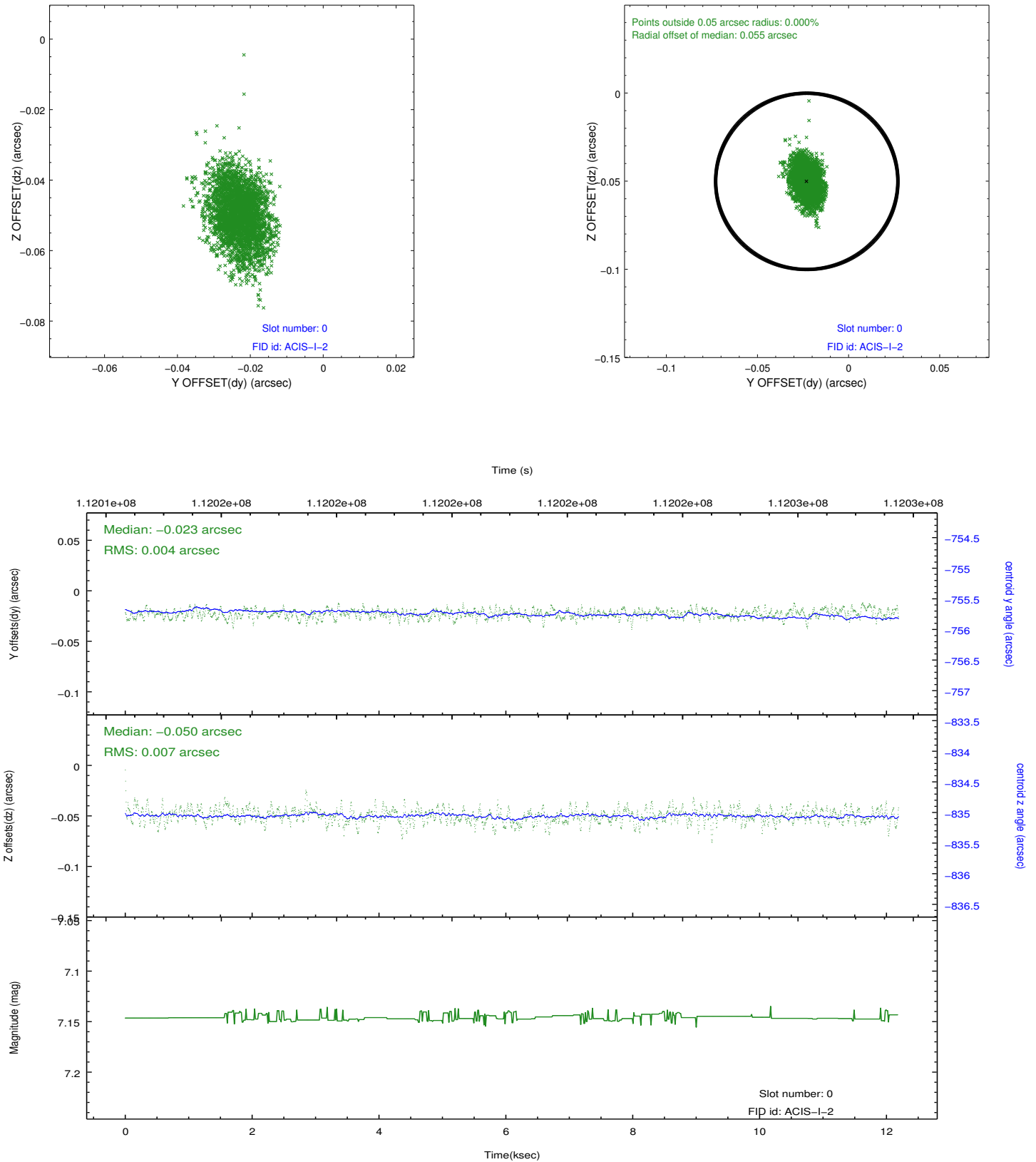


2.4.5 Slot 7

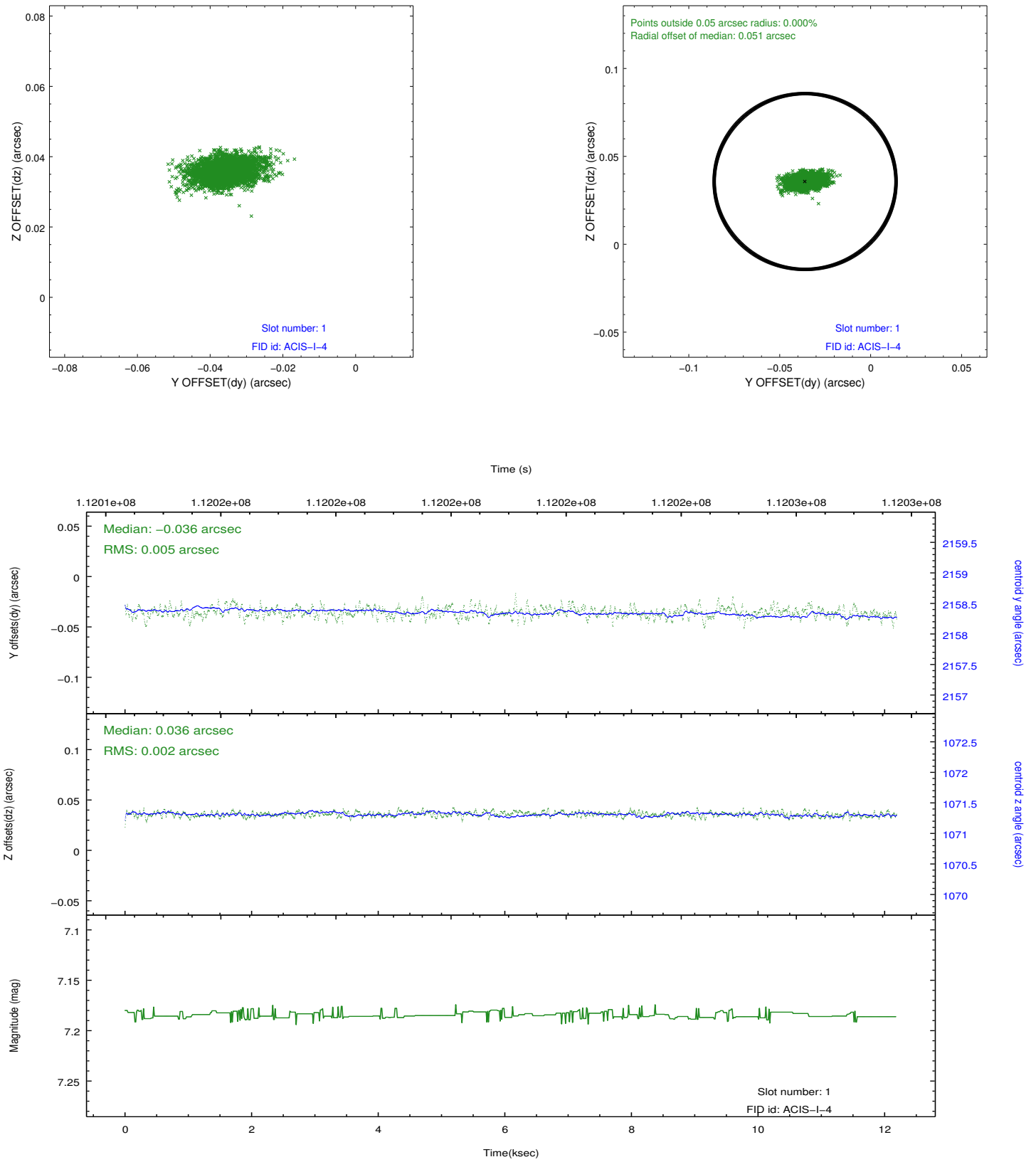


2.5 FID Slots

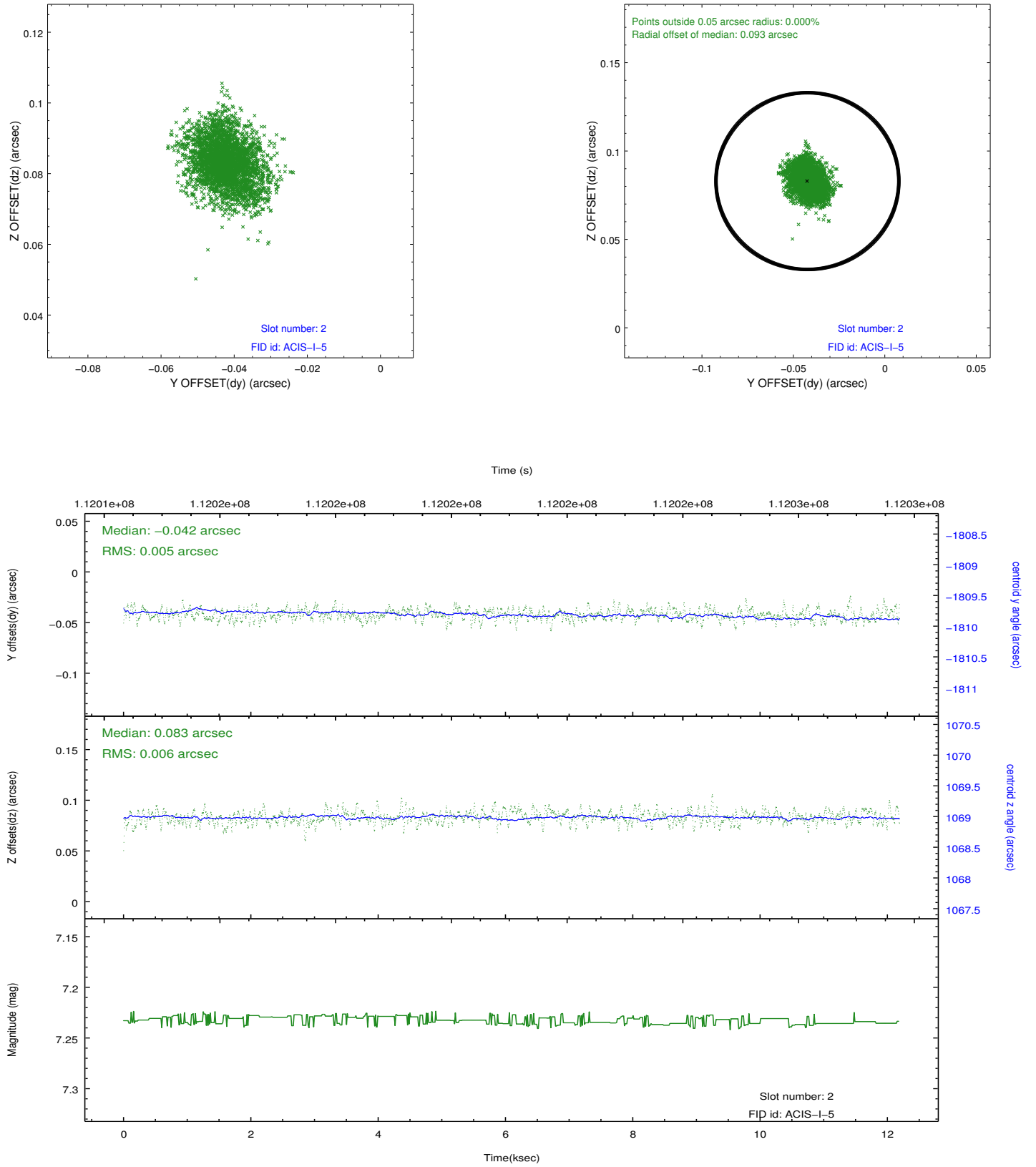
2.5.1 Slot 0



2.5.2 Slot 1



2.5.3 Slot 2



A Summary

A.1 Status

V&V Scientist	Jen Lauer
V&V Date (YYYY-MM-DD)	2012.09.24
V&V Edition	1
V&V Disposition and Status	OK
V&V Charge Time	11.8

A.2 Comments

Charge time for this ObsId remains at previous value of 11.8 ks although with the current processing the charge time would have been 11.76 ksec.
Roll constraint met.