

V&V Reference Report

L2 ASCDS Version : 7.6.9

Observation 2272 - L2 Version 001
Chandra X-Ray Center

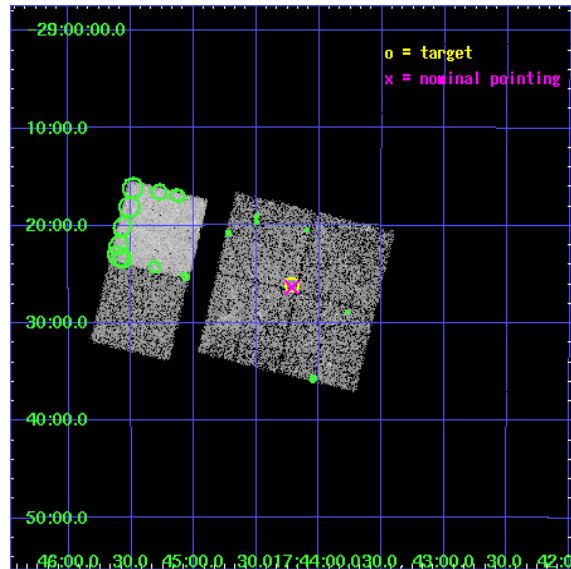
L2 Processing Date : Dec 14 2006

Contents

1	Front	2
2	OBI	3
2.1	OBI	3
2.1.1	Images	3
2.1.2	Bias	3
2.1.3	Parameters	4
2.1.4	Events	4
2.2	Compared Parameters	5
2.3	Aspect	6
2.4	Star Slots	9
2.4.1	Slot 3	9
2.4.2	Slot 4	10
2.4.3	Slot 5	11
2.4.4	Slot 6	12
2.4.5	Slot 7	13
2.5	FID Slots	14
2.5.1	Slot 0	14
2.5.2	Slot 1	15
2.5.3	Slot 2	16
3	Point Sources	17
A	Summary	18
A.1	Status	18
A.2	Comments	18

1 Front

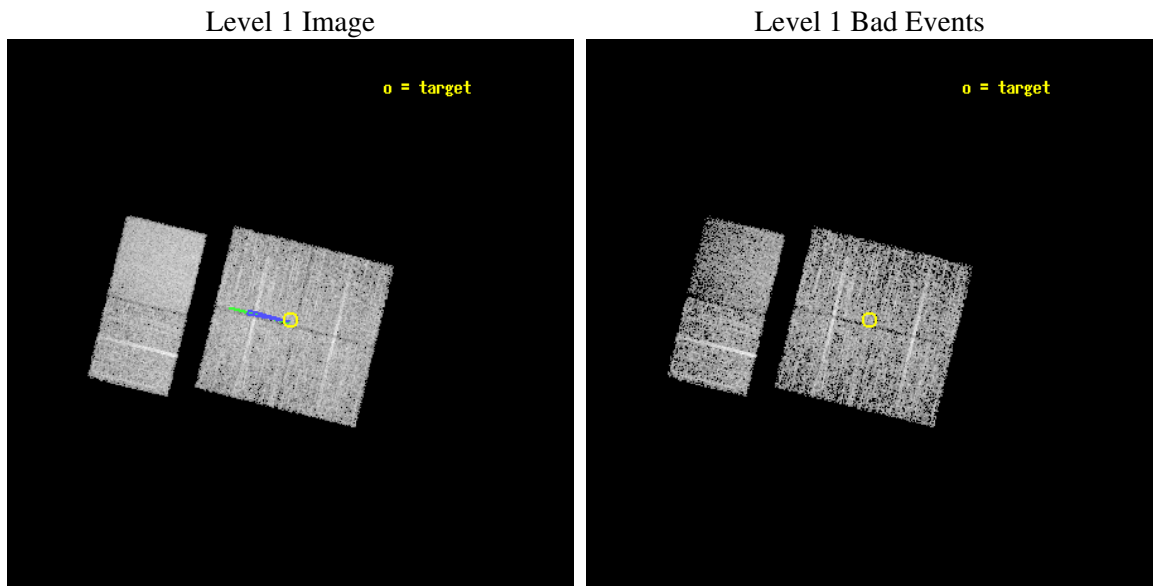
seq_num	900099
obs_id	2272
title	CHANDRA SURVEY OF THE GALACTIC RIDGE AROUND THE MILKY WAY CENTER
observer	Prof. Q. Daniel Wang
object	GCS 23
dtcycle	0
cycle	P
ra_targ	266.055
dec_targ	-29.435
ra_nom	266.05414281733
dec_nom	-29.439658737387
roll_nom	283.80726284378
revision	2
ontime	11756.7590307
livetime	11607.887868783
ontime0	11760.000010952
ontime1	11760.000010952
ontime2	11756.7590307
ontime3	11756.7590307
ontime6	11753.518040538
ontime7	11760.000010952
l2events	54952



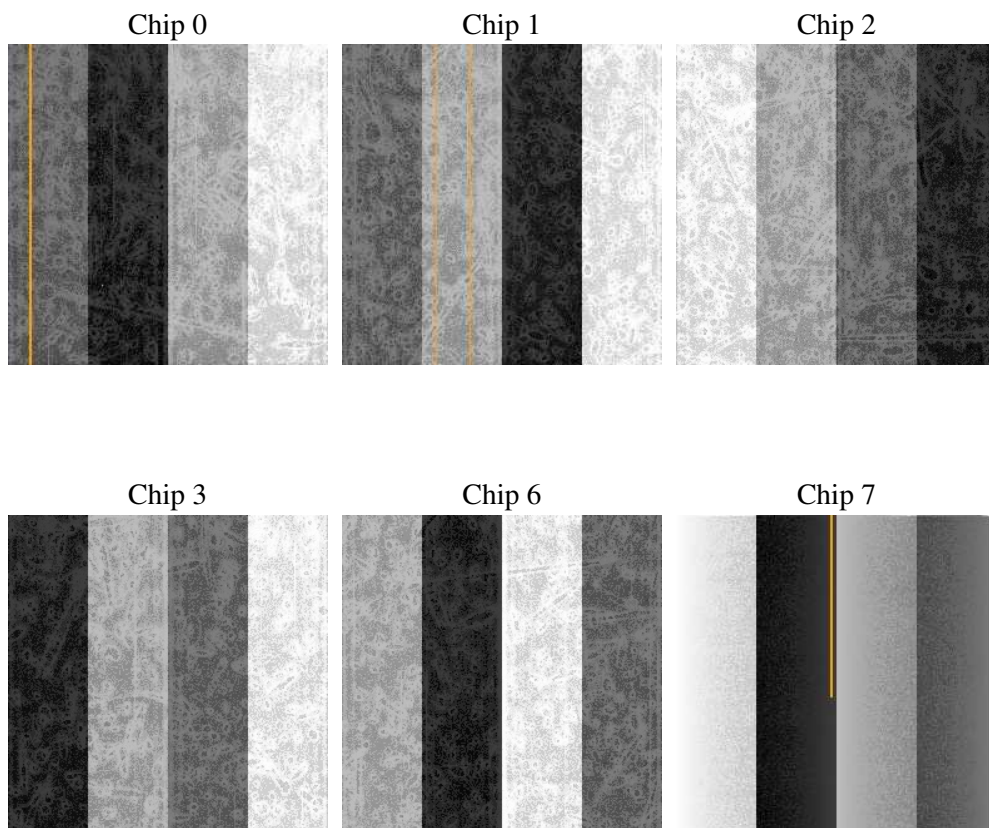
2 OBI

2.1 OBI

2.1.1 Images



2.1.2 Bias



2.1.3 Parameters

obi_num	0
ascdsver	7.6.9
caldbver	3.2.4
date	2006-12-14T14:10:56
revision	2

sched_exp_time	12000.000000
ontime	11761.613350242
ontime0	11764.854330495
ontime1	11764.854330495
ontime2	11761.613350242
ontime3	11761.613350242
ontime6	11758.37236008
ontime7	11764.854330495
l1events	203106

2.1.4 Events

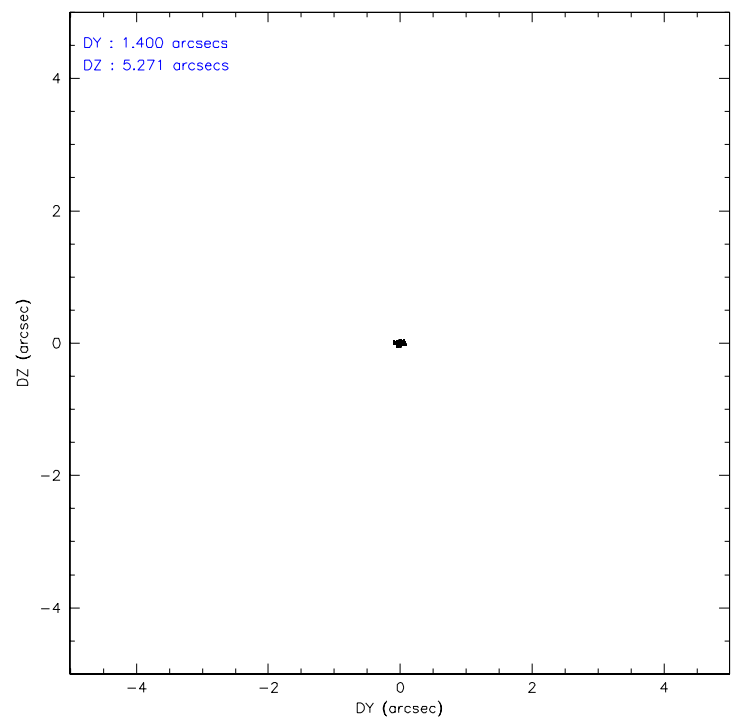
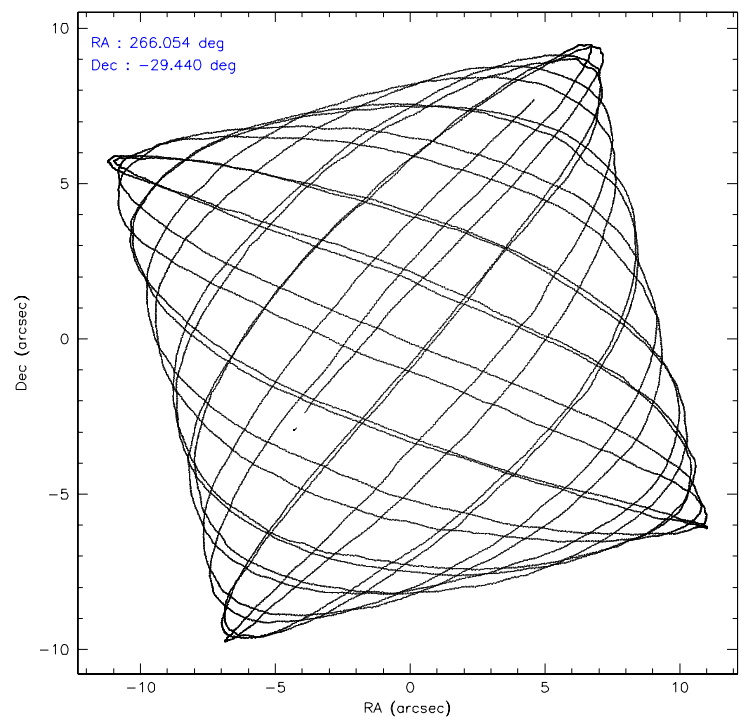
	ccd 0	ccd 1	ccd 2	ccd 3	ccd 6	ccd 7
level 1 events	30938	29409	32646	32822	34145	43146
rejected events	23969	22816	25079	25770	27273	19704
rejected %	77%	77%	76%	78%	79%	45%

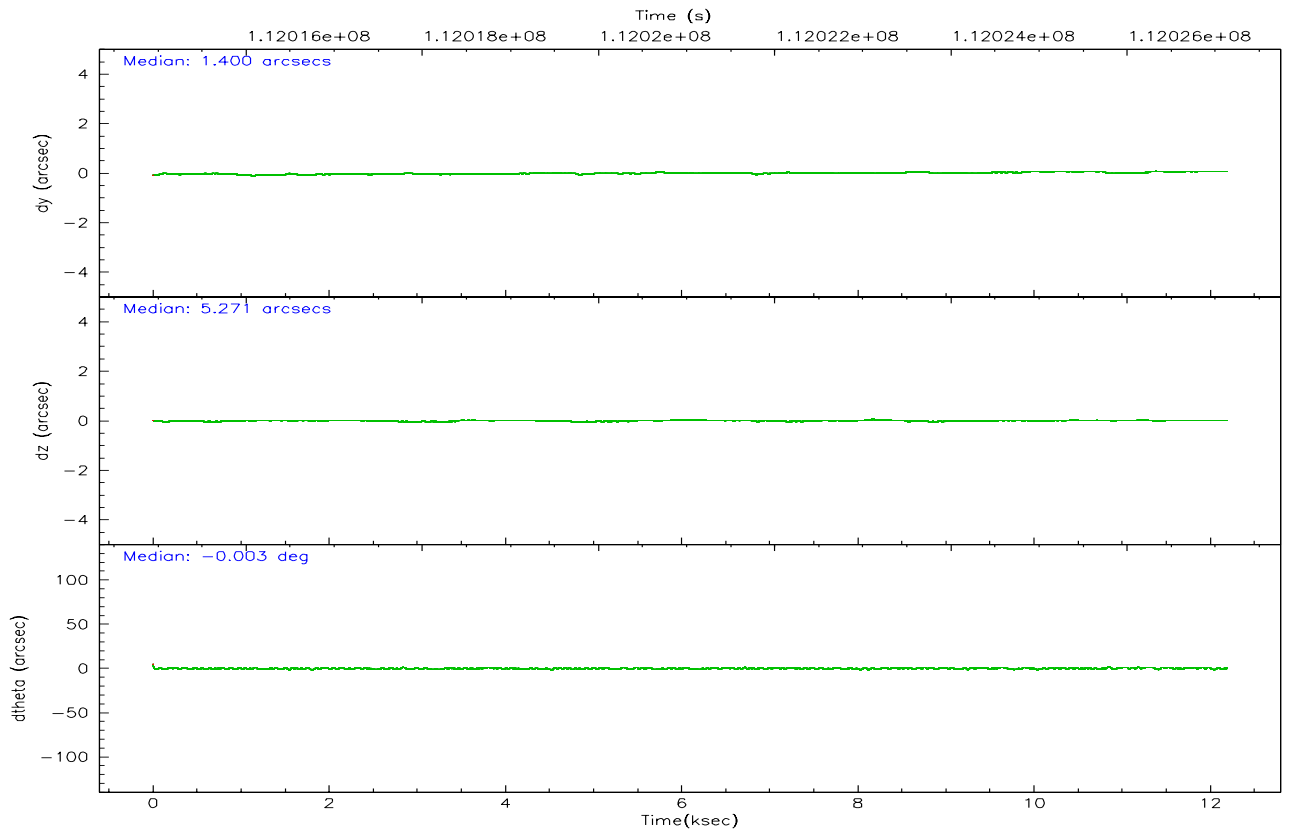
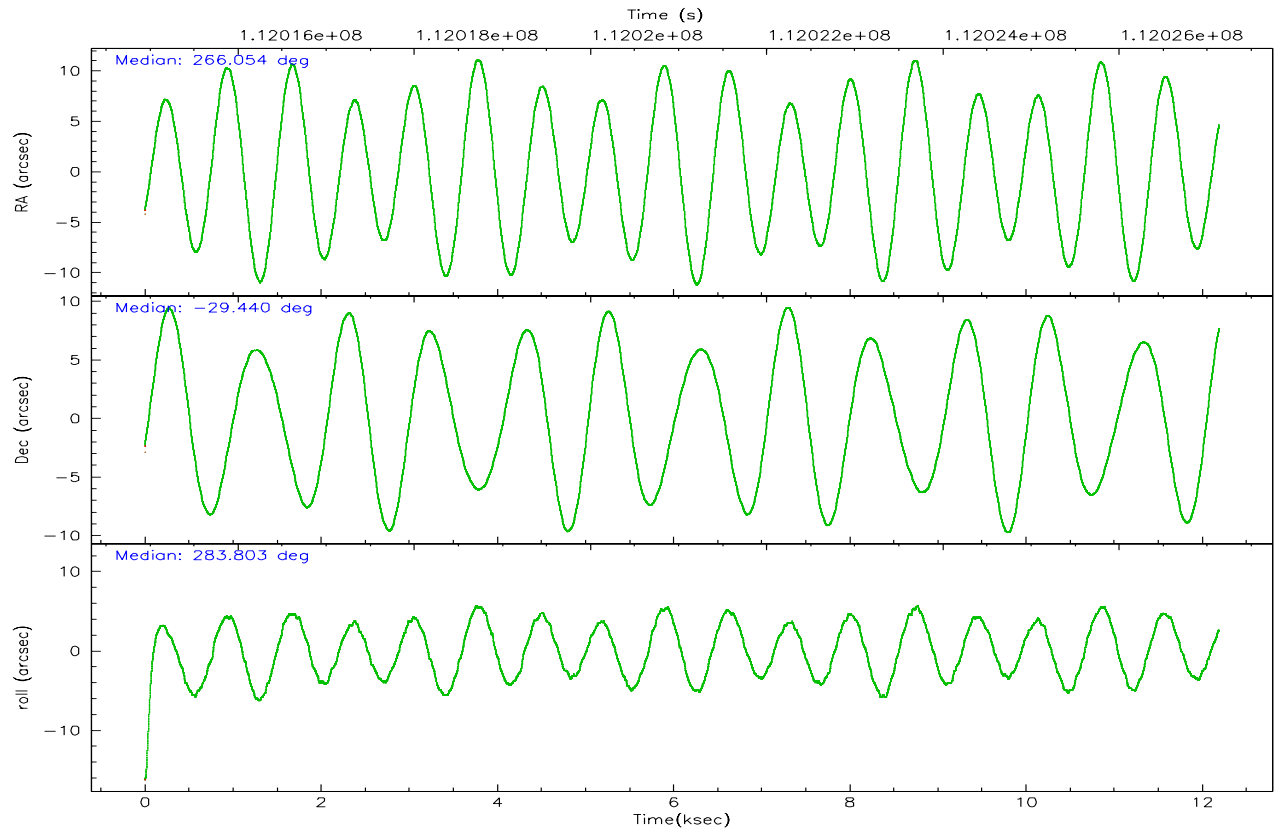
	ccd 0	ccd 1	ccd 2	ccd 3	ccd 6	ccd 7
grade 0 events	3657	3134	4062	3544	3548	1616
	11%	10%	12%	10%	10%	3%
grade 1 events	33	24	28	39	31	31
	0%	0%	0%	0%	0%	0%
grade 2 events	1295	1280	1376	1366	1247	5889
	4%	4%	4%	4%	3%	13%
grade 3 events	543	550	559	495	528	1371
	1%	1%	1%	1%	1%	3%
grade 4 events	496	565	548	583	545	1384
	1%	1%	1%	1%	1%	3%
grade 5 events	1231	1364	1133	1302	1430	3393
	3%	4%	3%	3%	4%	7%
grade 6 events	986	1065	1024	1068	1011	13200
	3%	3%	3%	3%	2%	30%
grade 7 events	22697	21427	23916	24425	25805	16262
	73%	72%	73%	74%	75%	37%

2.2 Compared Parameters

Parameter	Planned	Actual	Parameter	Planned	Actual
Instrument	ACIS	ACIS	Obspar format version number	6	6
Detector	ACIS-012367	ACIS-012367	Obspar file type	PREDICTED	ACTUAL
Grating	NONE	NONE	Obspar update status	NONE	UPDATED
Data mode	FAINT	FAINT	Number of optional ACIS chips dropped	0	0
Observation mode	POINTING	POINTING	On-chip summing requested	N	N
Pointing RA	266.032297	266.0541428173283	Subarray requested	NONE	NONE
Pointing Dec	-29.419892	-29.43965873738653	Alternating exposures requested	N	N
Pointing Roll	283.587851	283.8072628437754	Primary exposure time	0.000000	3.2
Roll angle	283.600000	283.600000			
Roll tolerance	2.000000	2.000000			
Roll constraint allows 180D rotation	N	N			
SIM focus pos (mm)	-0.782348	-0.7809083437167272			
SIM defocus (mm)	0	0.001439871863259334			
SIM translation stage pos (mm)	-233.592463	-233.5874344608287			
SIM translation stage offset (mm)	0	-0.005018542100998502			
Observation start time	112015136.184000	112014760.17244			
Observation start date	2001-07-20T11:17:52	2001-07-20T11:12:40			
Observation end time	112027136.184000	112027270.29793			
Observation end date	2001-07-20T14:37:52	2001-07-20T14:41:10			
Read mode	TIMED	TIMED			

2.3 Aspect



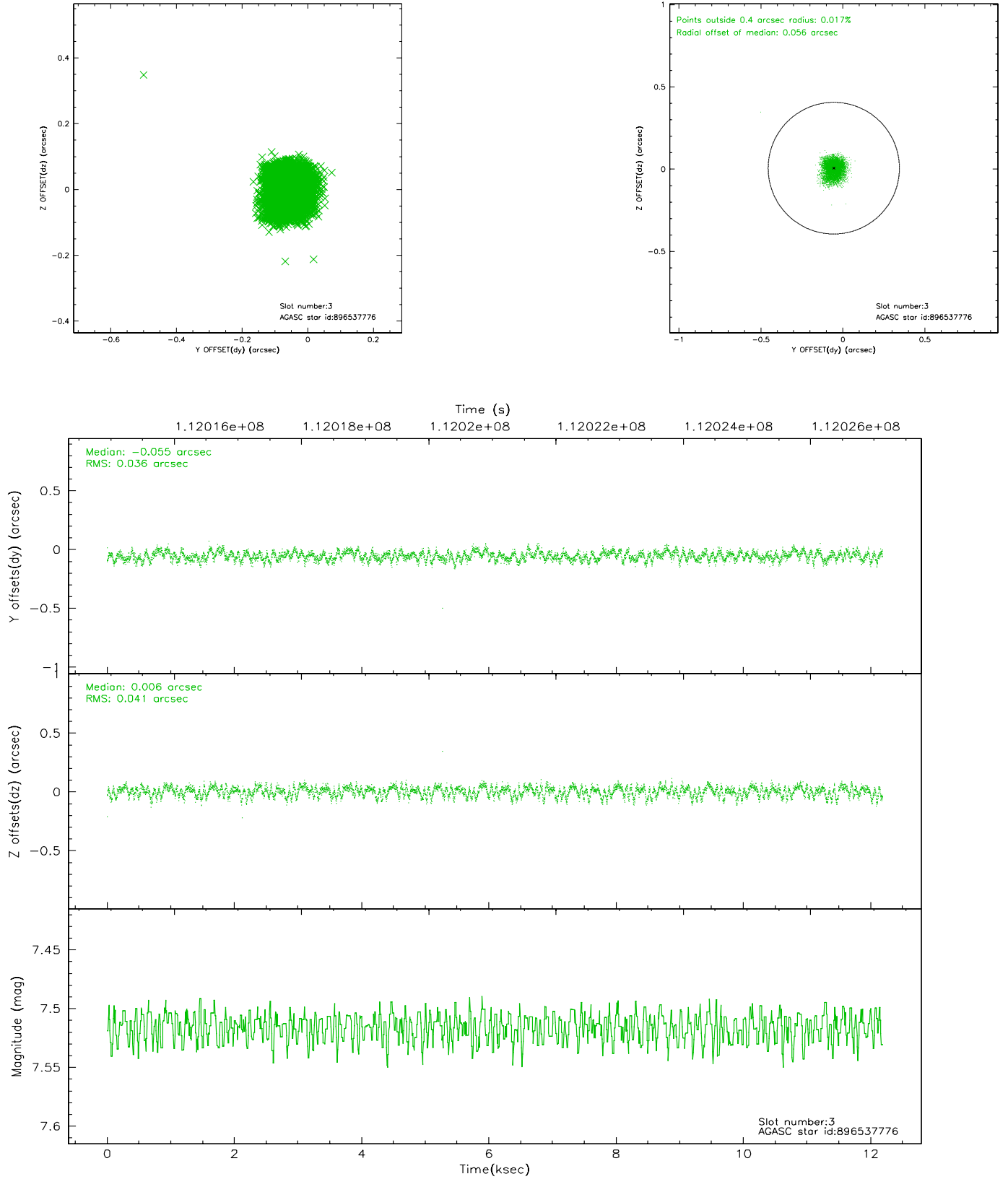


Slot Statistics

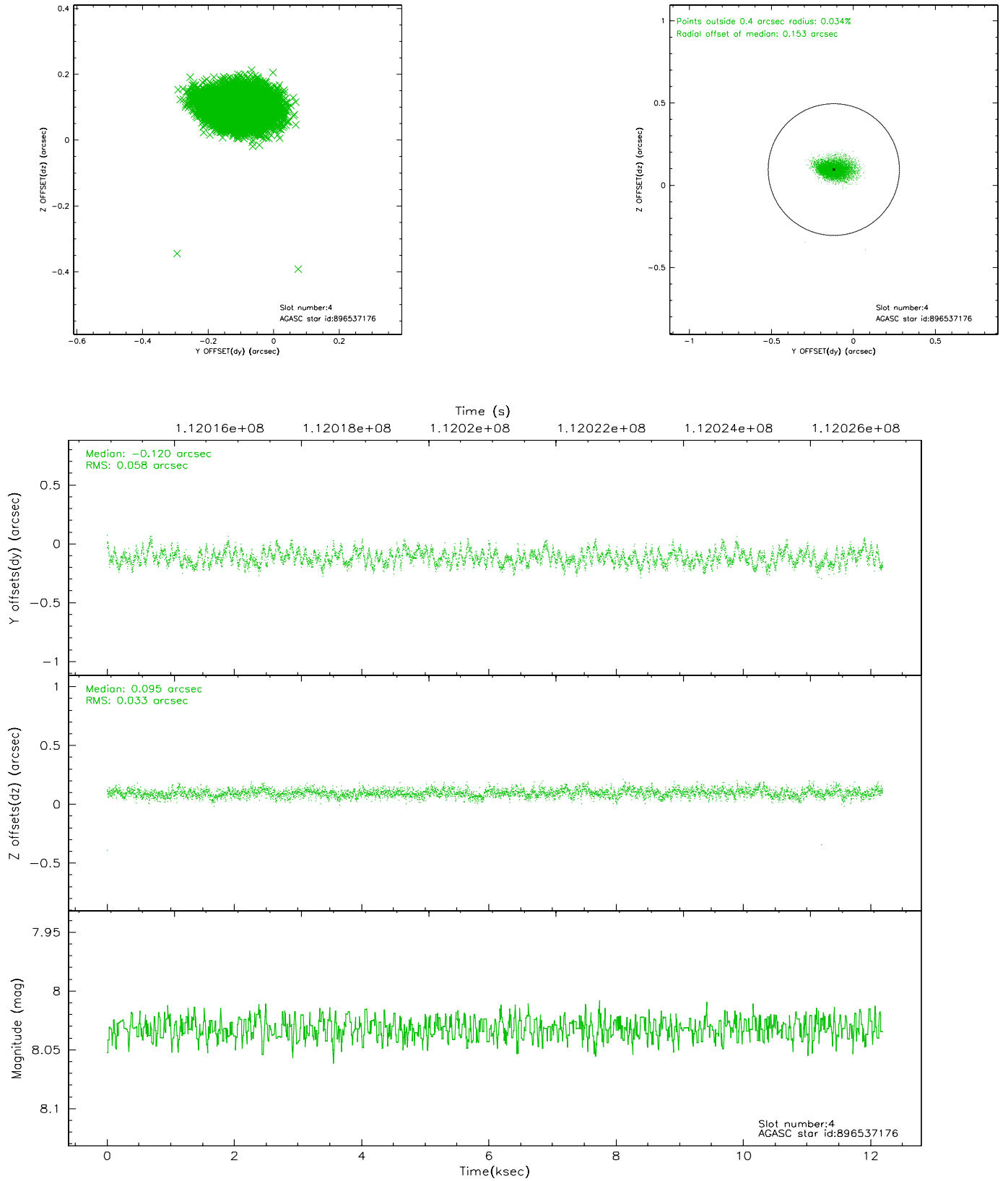
slot	status	id	mag	n_pts	med_dy	med_dz	dr1	dr2	ra	dec	mean_y	mean_z
0	FID	ACIS-I-2	7.15	2973	-0.012	-0.027	0.009	0.015	0.000000	0.000000	-755.73	-835.02
1	FID	ACIS-I-4	7.19	2972	-0.078	0.024	0.005	0.009	0.000000	0.000000	2158.05	1071.04
2	FID	ACIS-I-5	7.23	2973	-0.011	0.071	0.009	0.014	0.000000	0.000000	-1809.06	1069.35
3	GUIDE	896537776	7.52	5947	-0.055	0.006	0.058	0.091	266.655684	-29.665673	1322.67	1687.10
4	GUIDE	896537176	8.03	5947	-0.120	0.095	0.070	0.118	266.498272	-28.678259	-2247.10	2058.06
5	GUIDE	896536320	8.97	5943	0.030	0.057	0.068	0.113	266.369048	-29.307026	-145.98	1123.67
6	GUIDE	896541168	8.15	5946	0.082	-0.078	0.049	0.078	266.319970	-29.850801	1719.56	509.21
7	GUIDE	896403224	8.28	5945	0.061	-0.075	0.057	0.093	265.612825	-29.438915	-240.07	-1294.33

2.4 Star Slots

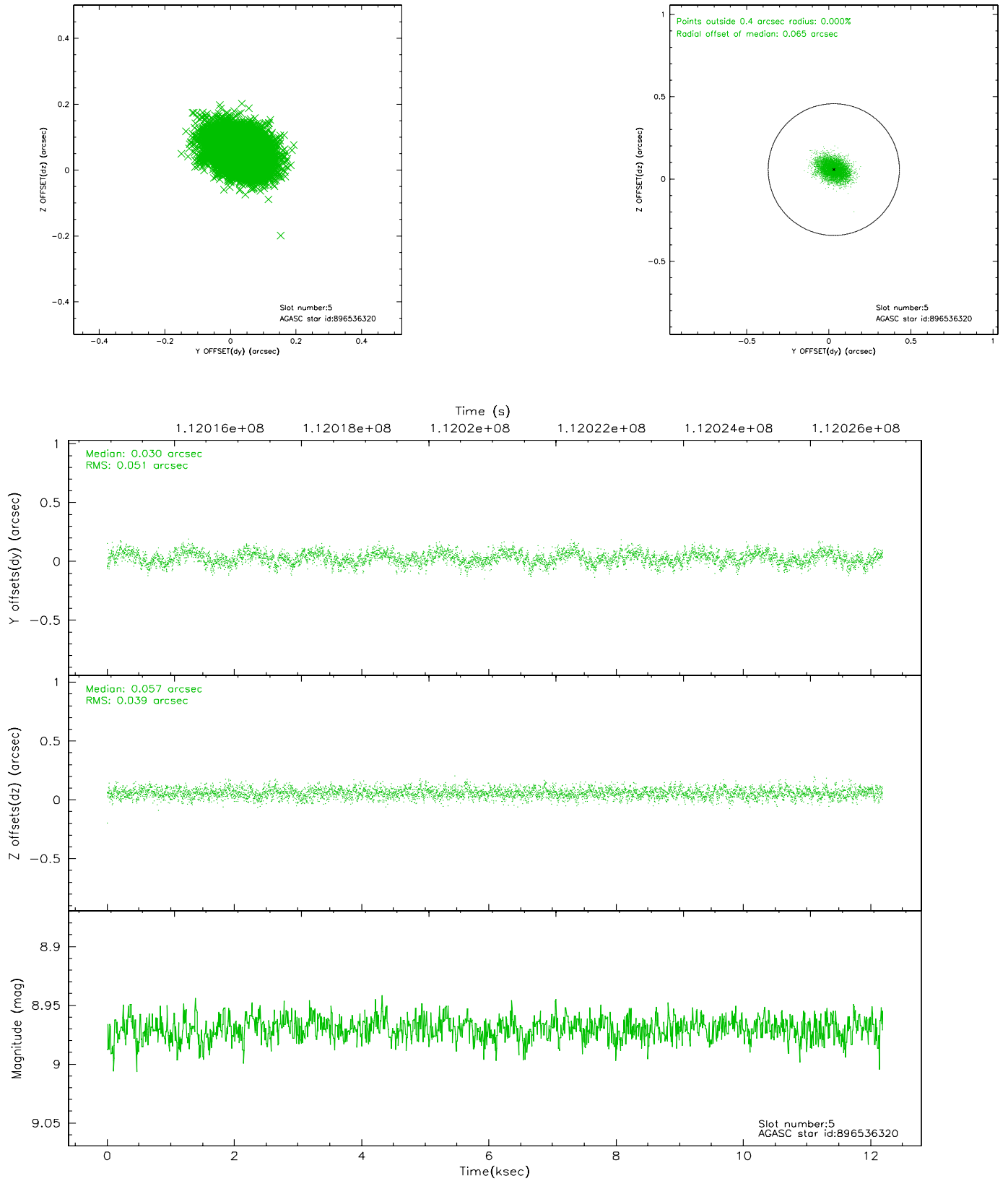
2.4.1 Slot 3



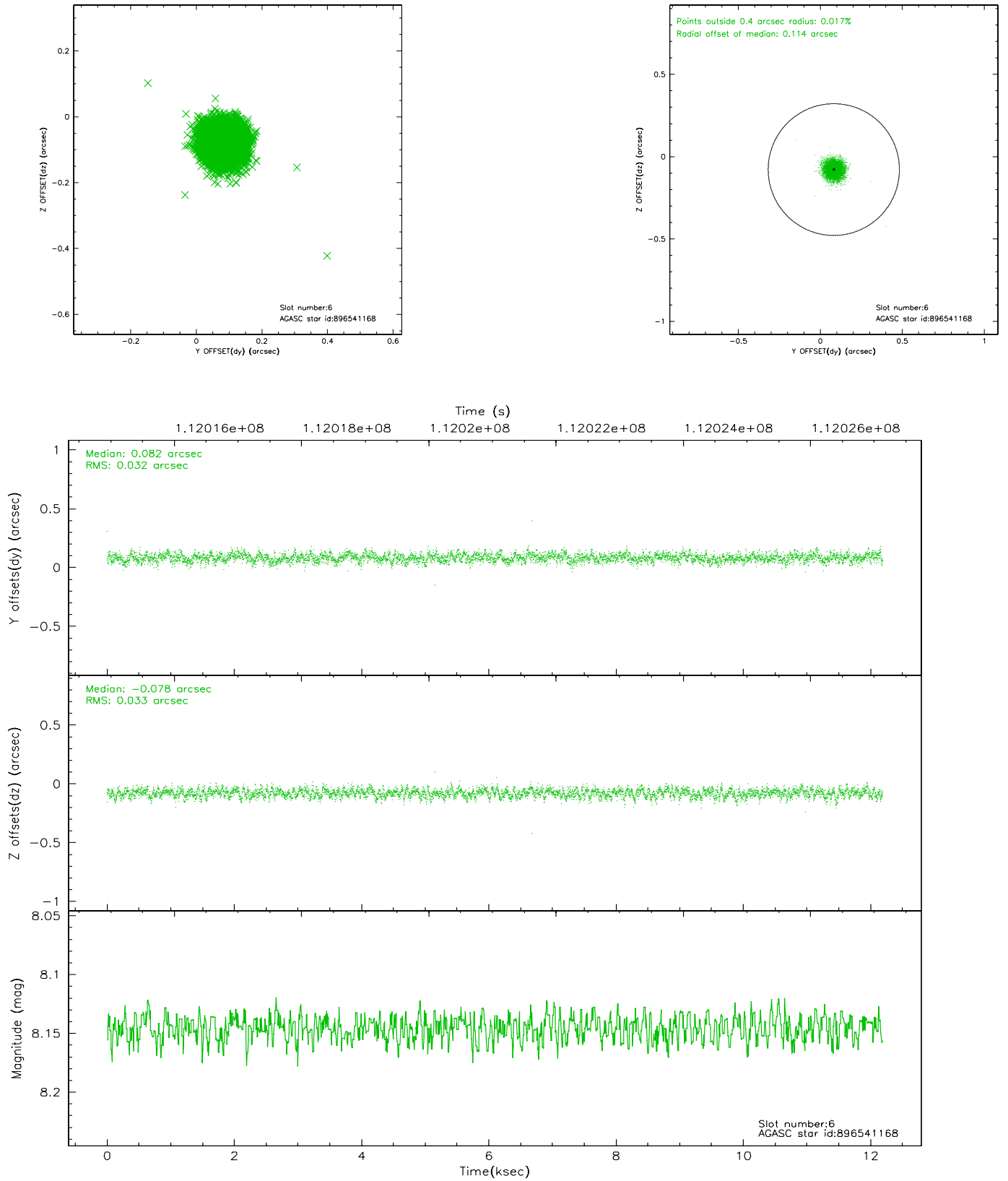
2.4.2 Slot 4



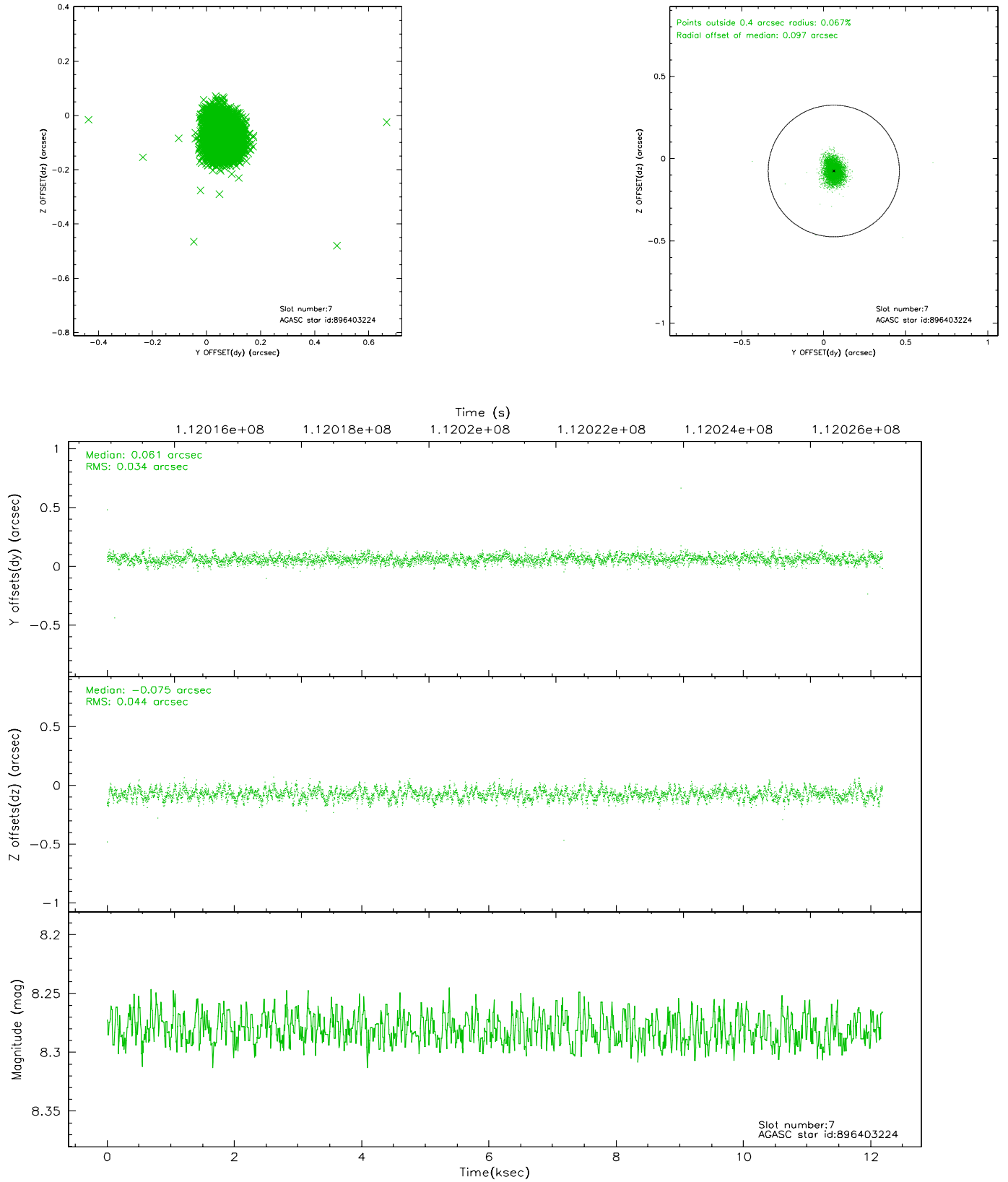
2.4.3 Slot 5



2.4.4 Slot 6

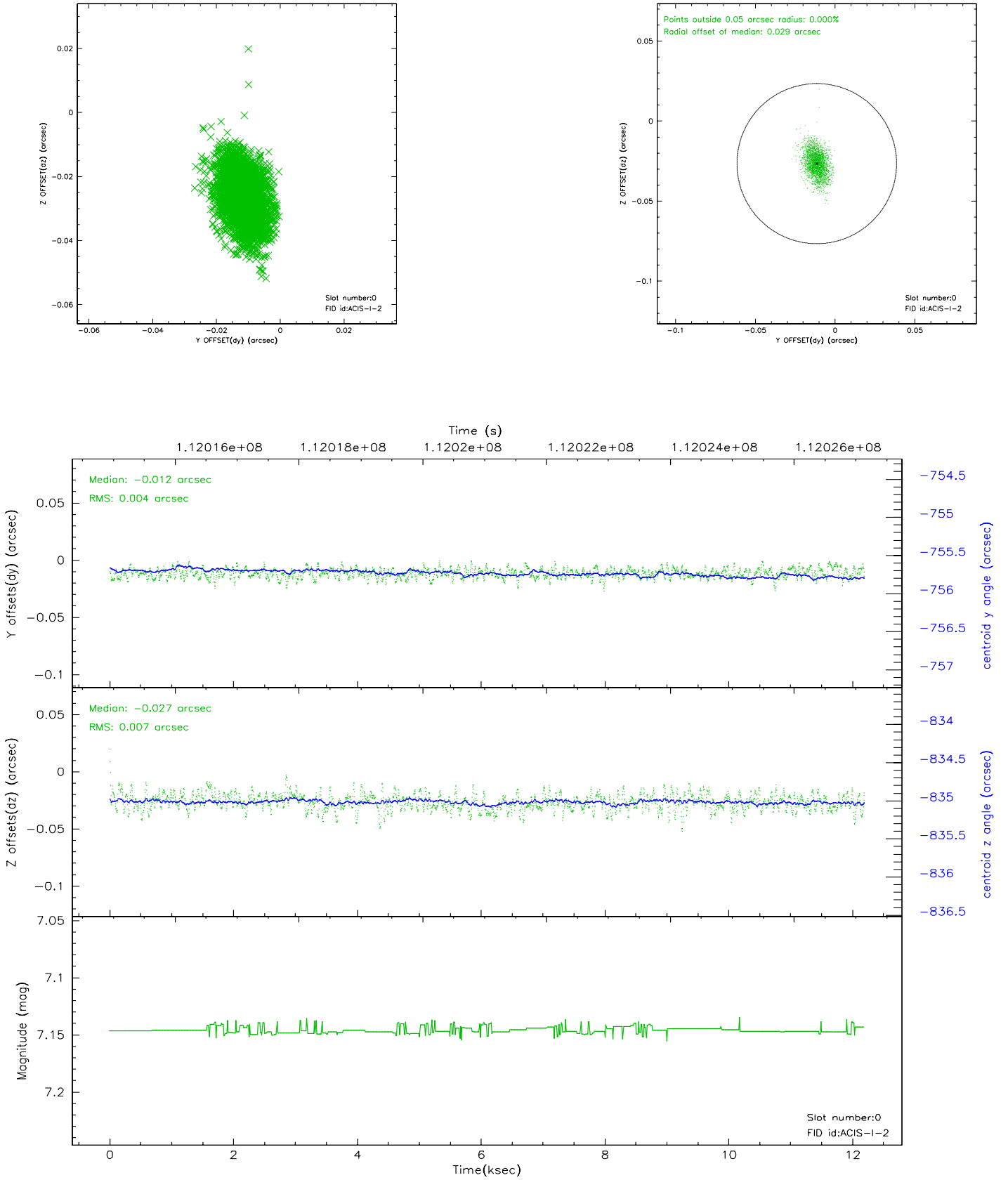


2.4.5 Slot 7

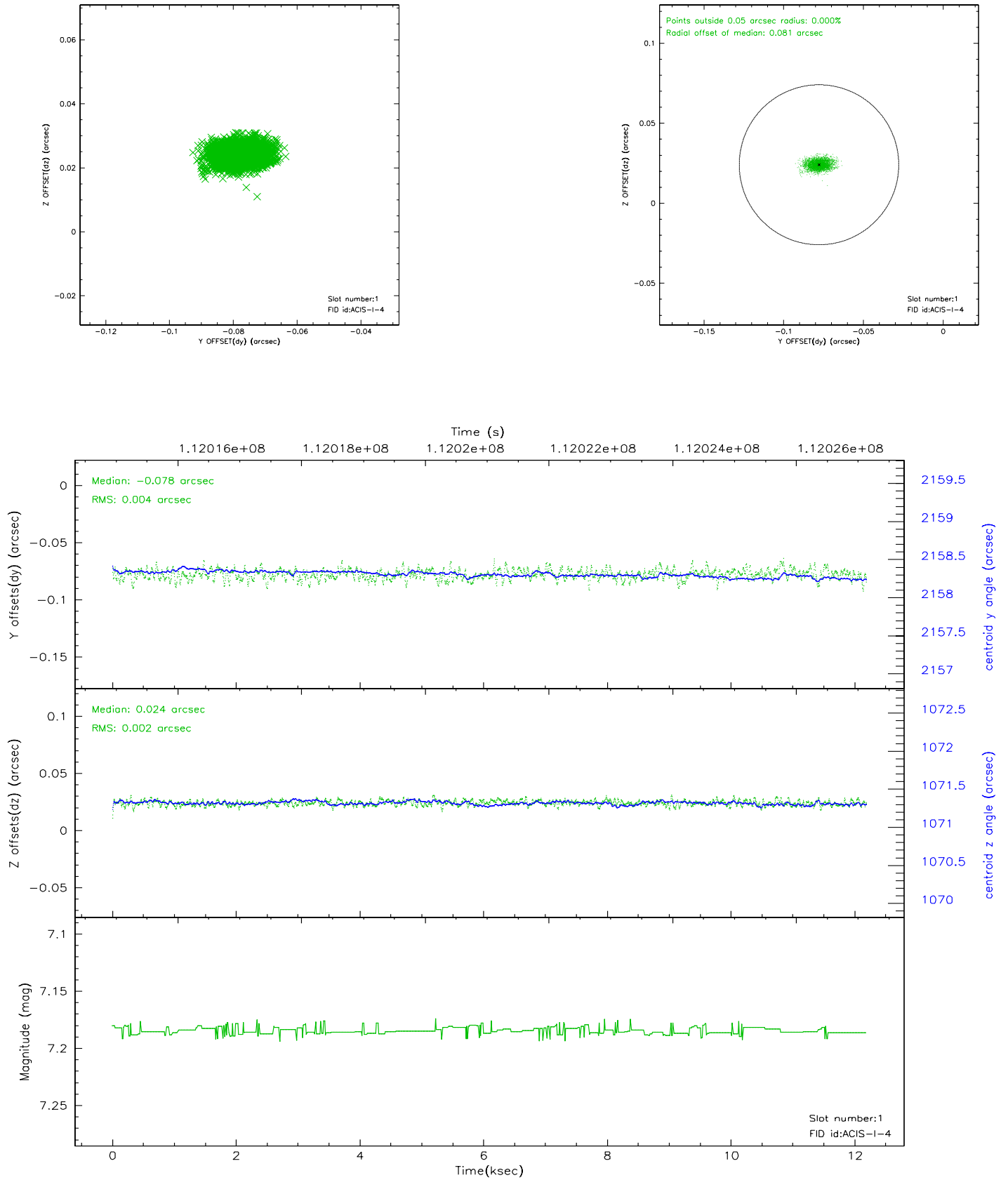


2.5 FID Slots

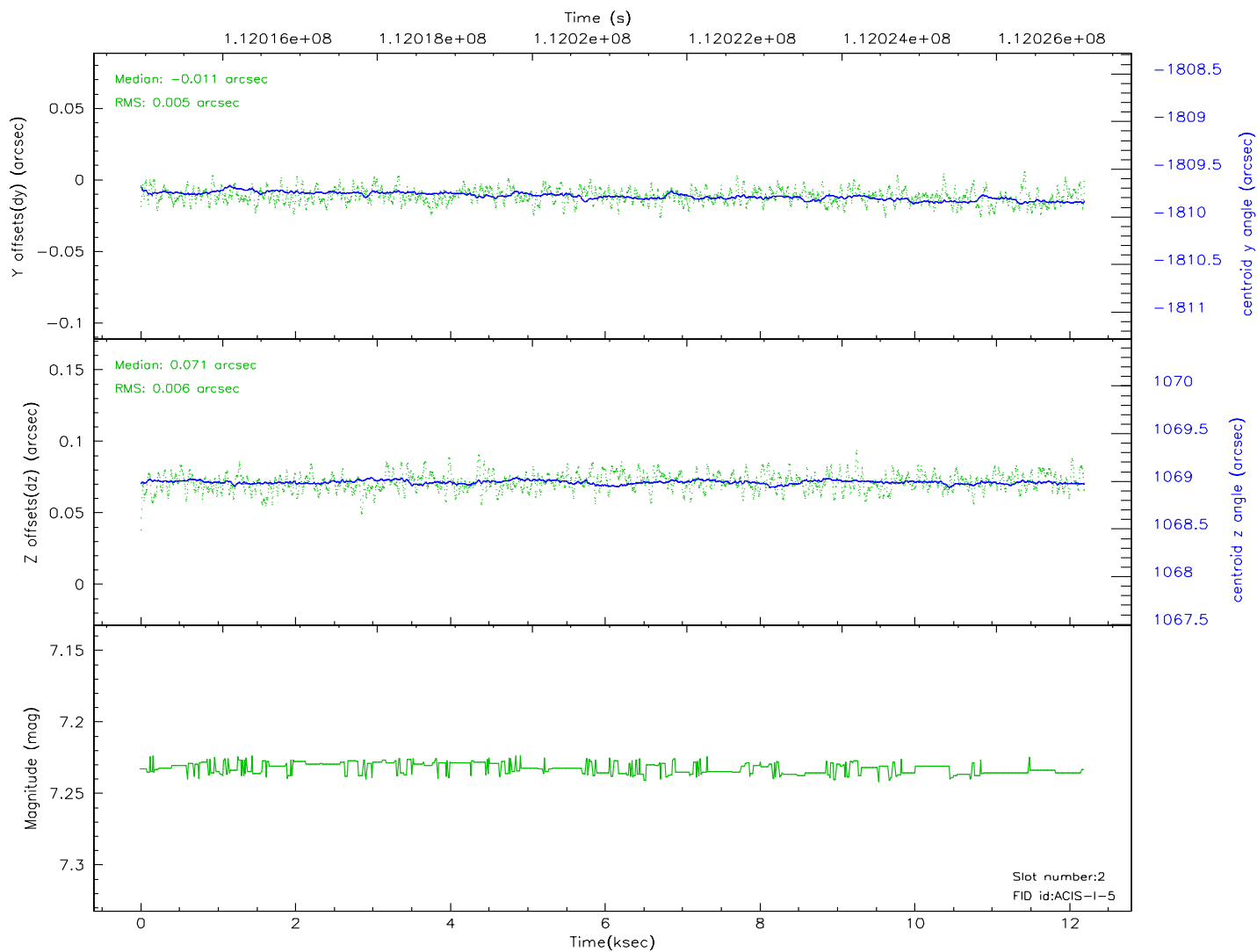
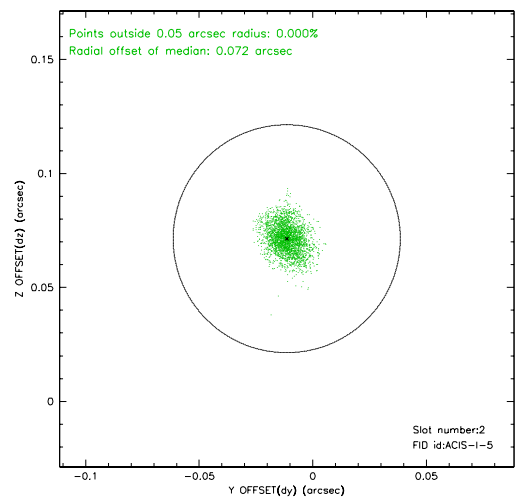
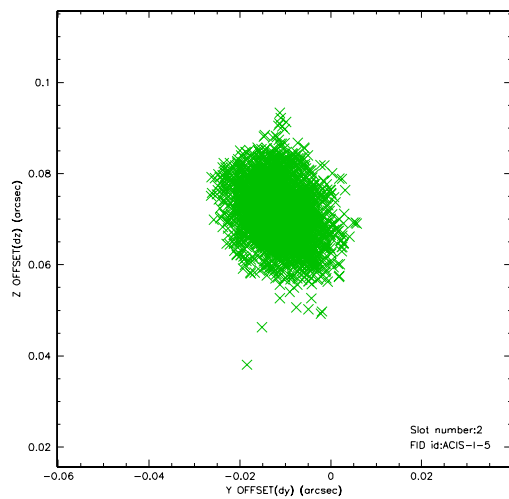
2.5.1 Slot 0



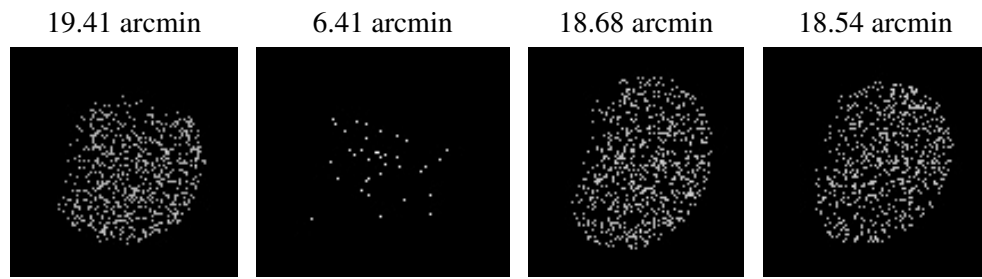
2.5.2 Slot 1



2.5.3 Slot 2



3 Point Sources



A Summary

A.1 Status

V&V Scientist	Jen Lauer
V&V Date (YYYY-MM-DD)	2006.12.14
V&V Edition	1
V&V Disposition and Status	OK
V&V Charge Time	11.8

A.2 Comments

Roll constraint met.