

# V&V Reference Report

## L2 ASCDS Version : 7.6.9

Observation 2271 - L2 Version 001  
Chandra X-Ray Center

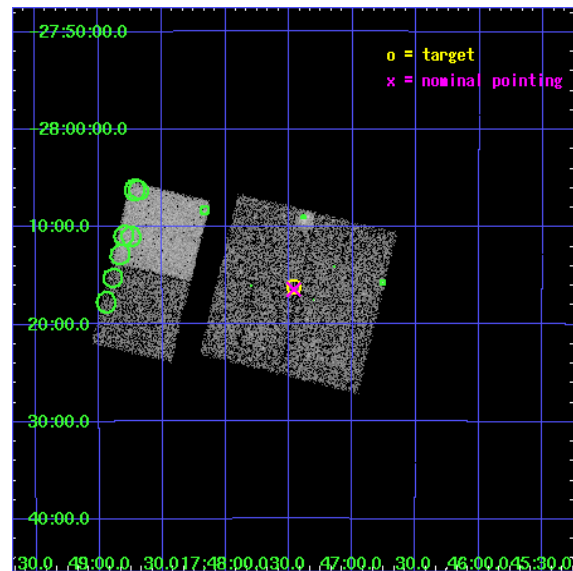
L2 Processing Date : Dec 14 2006

## Contents

<b>1</b>	<b>Front</b>	<b>2</b>
<b>2</b>	<b>OBI</b>	<b>3</b>
2.1	OBI . . . . .	3
2.1.1	Images . . . . .	3
2.1.2	Bias . . . . .	3
2.1.3	Parameters . . . . .	4
2.1.4	Events . . . . .	4
2.2	Compared Parameters . . . . .	5
2.3	Aspect . . . . .	6
2.4	Star Slots . . . . .	9
2.4.1	Slot 3 . . . . .	9
2.4.2	Slot 4 . . . . .	10
2.4.3	Slot 5 . . . . .	11
2.4.4	Slot 6 . . . . .	12
2.4.5	Slot 7 . . . . .	13
2.5	FID Slots . . . . .	14
2.5.1	Slot 0 . . . . .	14
2.5.2	Slot 1 . . . . .	15
2.5.3	Slot 2 . . . . .	16
<b>3</b>	<b>Point Sources</b>	<b>17</b>
<b>A</b>	<b>Summary</b>	<b>18</b>
A.1	Status . . . . .	18
A.2	Comments . . . . .	18

# 1 Front

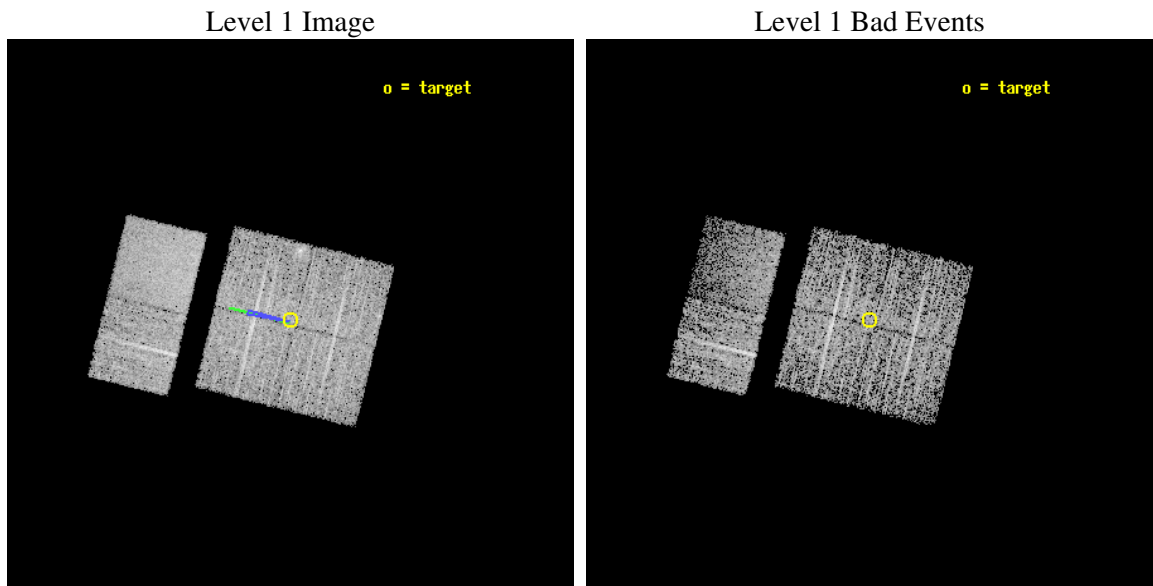
seq_num	900098
obs_id	2271
title	CHANDRA SURVEY OF THE GALACTIC RIDGE AROUND THE MILKY WAY CENTER
observer	Prof. Q. Daniel Wang
object	GCS 2
dtcycle	0
cycle	P
ra_targ	266.8664
dec_targ	-28.2696
ra_nom	266.86560262003
dec_nom	-28.274262374148
roll_nom	283.80727454997
revision	2
ontime	10550.359029576
livetime	10416.76403088
ontime0	10553.600009829
ontime1	10550.359039575
ontime2	10553.600009829
ontime3	10550.359029576
ontime6	10550.35903959
ontime7	10550.359029576
l2events	41865



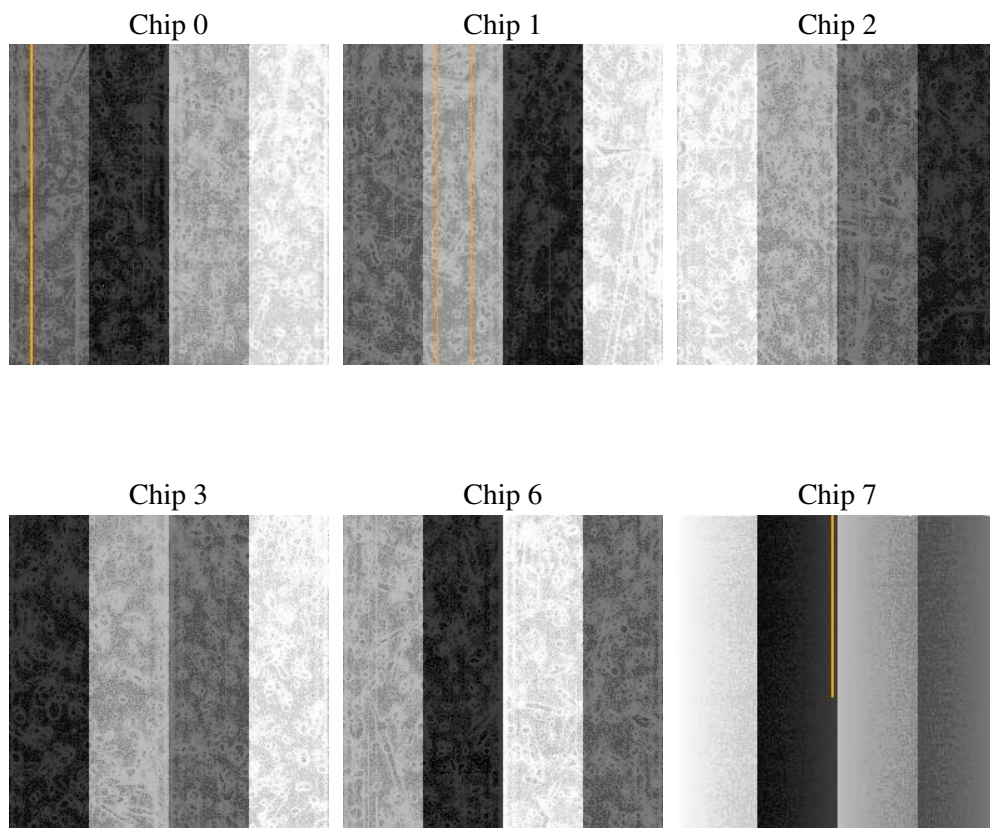
## 2 OBI

### 2.1 OBI

#### 2.1.1 Images



#### 2.1.2 Bias



### 2.1.3 Parameters

obi_num	0
ascdsver	7.6.9
caldbver	3.2.4
date	2006-12-14T09:37:54
revision	2

sched_exp_time	10800.000000
ontime	10555.955452621
ontime0	10559.196432874
ontime1	10555.95546262
ontime2	10559.196432874
ontime3	10555.955452621
ontime6	10555.955462635
ontime7	10555.955452621
l1events	175295

### 2.1.4 Events

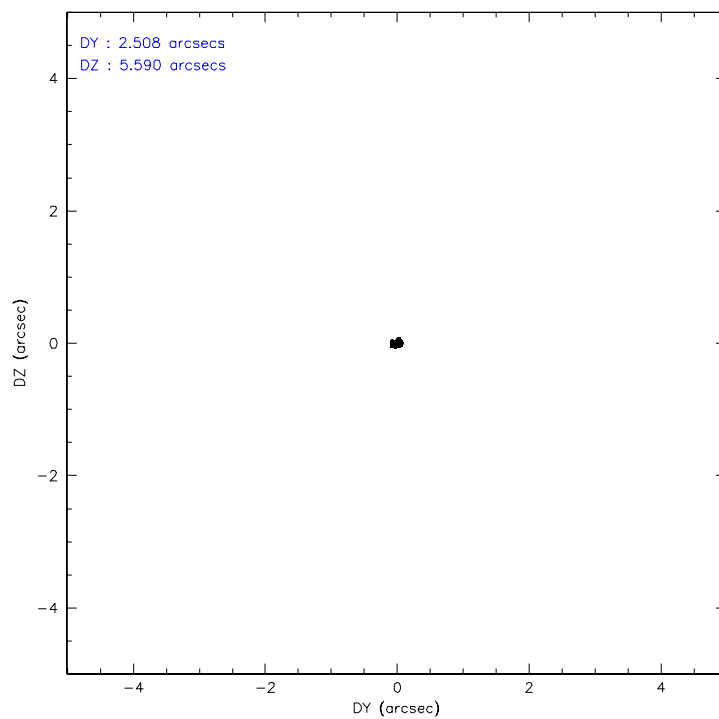
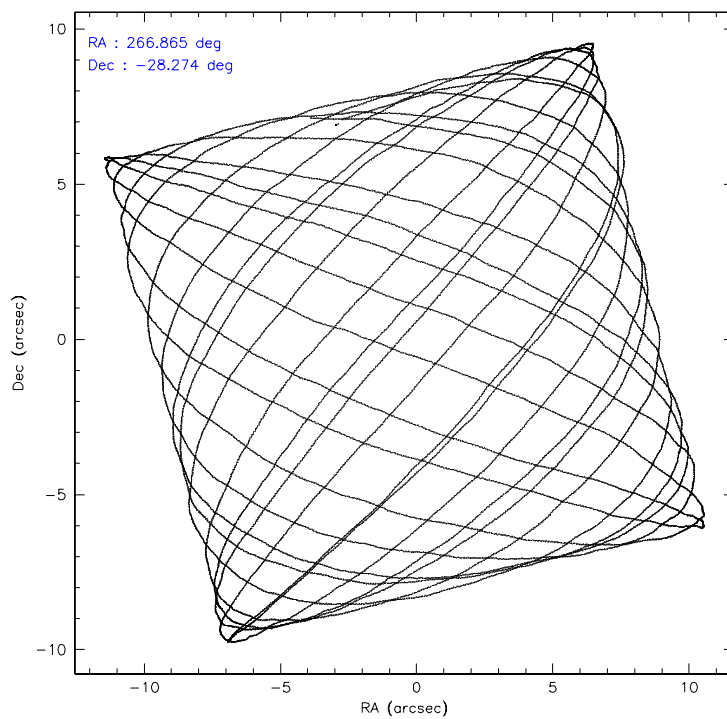
	ccd 0	ccd 1	ccd 2	ccd 3	ccd 6	ccd 7
level 1 events	27261	27210	28563	28400	29657	34204
rejected events	21515	21508	23309	22615	24804	16950
rejected %	78%	79%	81%	79%	83%	49%

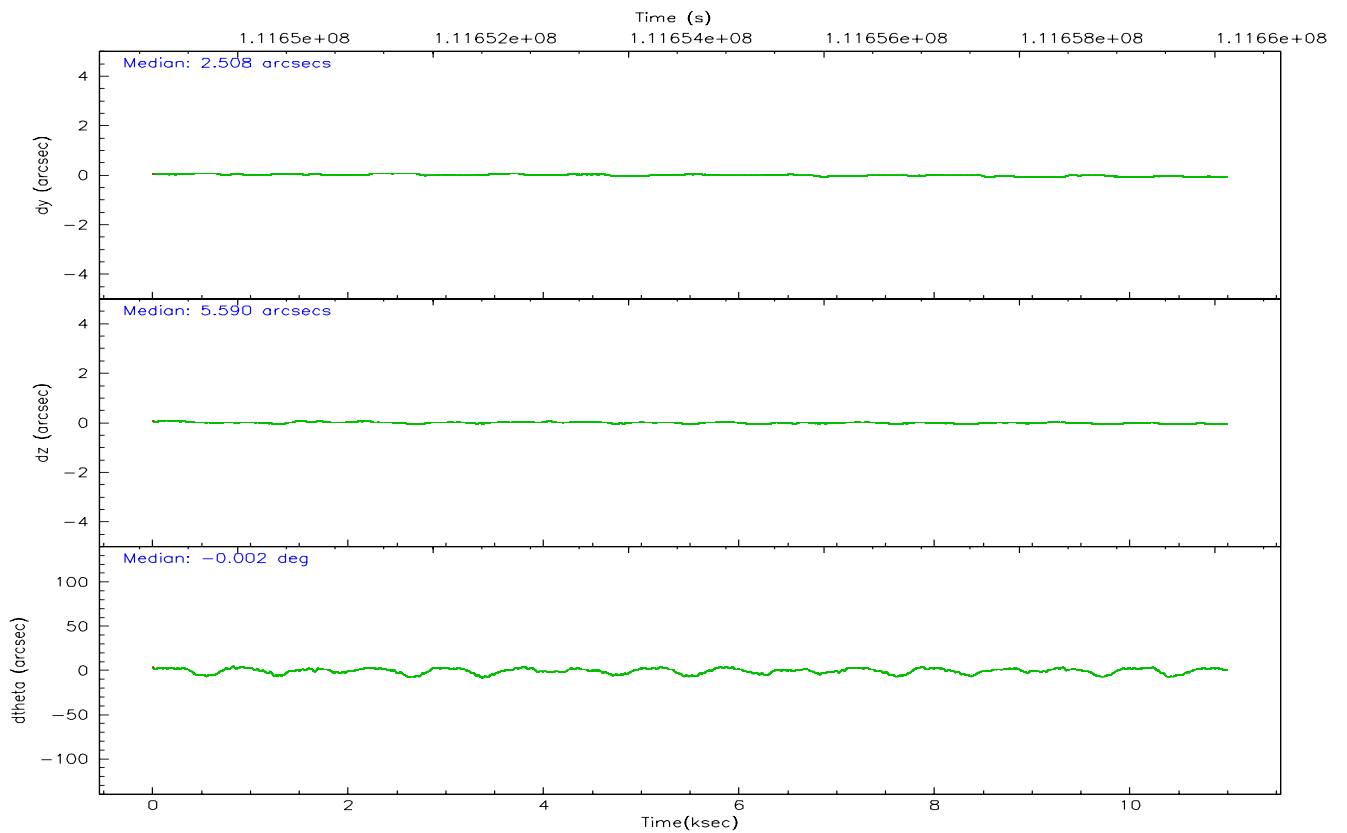
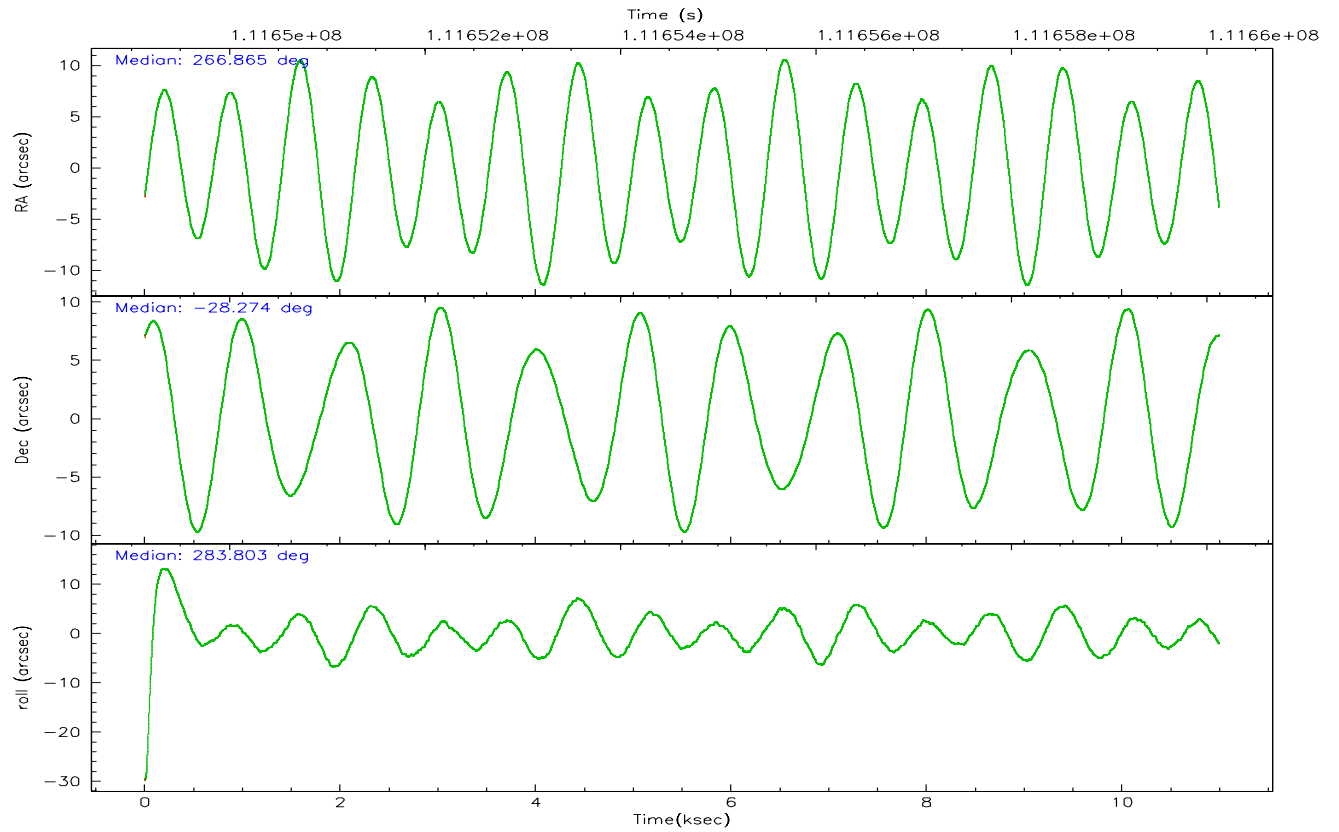
	ccd 0	ccd 1	ccd 2	ccd 3	ccd 6	ccd 7
grade 0 events	2687	2687	2530	2898	2248	1154
	9%	9%	8%	10%	7%	3%
grade 1 events	25	28	25	35	20	27
	0%	0%	0%	0%	0%	0%
grade 2 events	1199	1150	1057	1105	964	4328
	4%	4%	3%	3%	3%	12%
grade 3 events	500	477	435	439	412	1023
	1%	1%	1%	1%	1%	2%
grade 4 events	456	468	430	428	397	907
	1%	1%	1%	1%	1%	2%
grade 5 events	1048	1235	995	1251	1317	3039
	3%	4%	3%	4%	4%	8%
grade 6 events	906	921	802	916	836	9845
	3%	3%	2%	3%	2%	28%
grade 7 events	20440	20244	22289	21328	23463	13881
	74%	74%	78%	75%	79%	40%

## 2.2 Compared Parameters

Parameter	Planned	Actual	Parameter	Planned	Actual
Instrument	ACIS	ACIS	Obspar format version number	6	6
Detector	ACIS-012367	ACIS-012367	Obspar file type	PREDICTED	ACTUAL
Grating	NONE	NONE	Obspar update status	NONE	UPDATED
Data mode	FAINT	FAINT	Number of optional ACIS chips dropped	0	0
Observation mode	POINTING	POINTING	On-chip summing requested	N	N
Pointing RA	266.843950	266.8656026200265	Subarray requested	NONE	NONE
Pointing Dec	-28.254490	-28.27426237414825	Alternating exposures requested	N	N
Pointing Roll	283.588375	283.8072745499689	Primary exposure time	0.000000	3.2
Roll angle	283.600000	283.600000			
Roll tolerance	2.000000	2.000000			
Roll constraint allows 180D rotation	N	N			
SIM focus pos (mm)	-0.782348	-0.7809083437167272			
SIM defocus (mm)	0	0.001439871863259334			
SIM translation stage pos (mm)	-233.592463	-233.5874344608287			
SIM translation stage offset (mm)	0	-0.005018542100998502			
Observation start time	111649332.184000	111648955.59564			
Observation start date	2001-07-16T05:41:08	2001-07-16T05:35:55			
Observation end time	111660132.184000	111660265.95858			
Observation end date	2001-07-16T08:41:08	2001-07-16T08:44:25			
Read mode	TIMED	TIMED			

## 2.3 Aspect





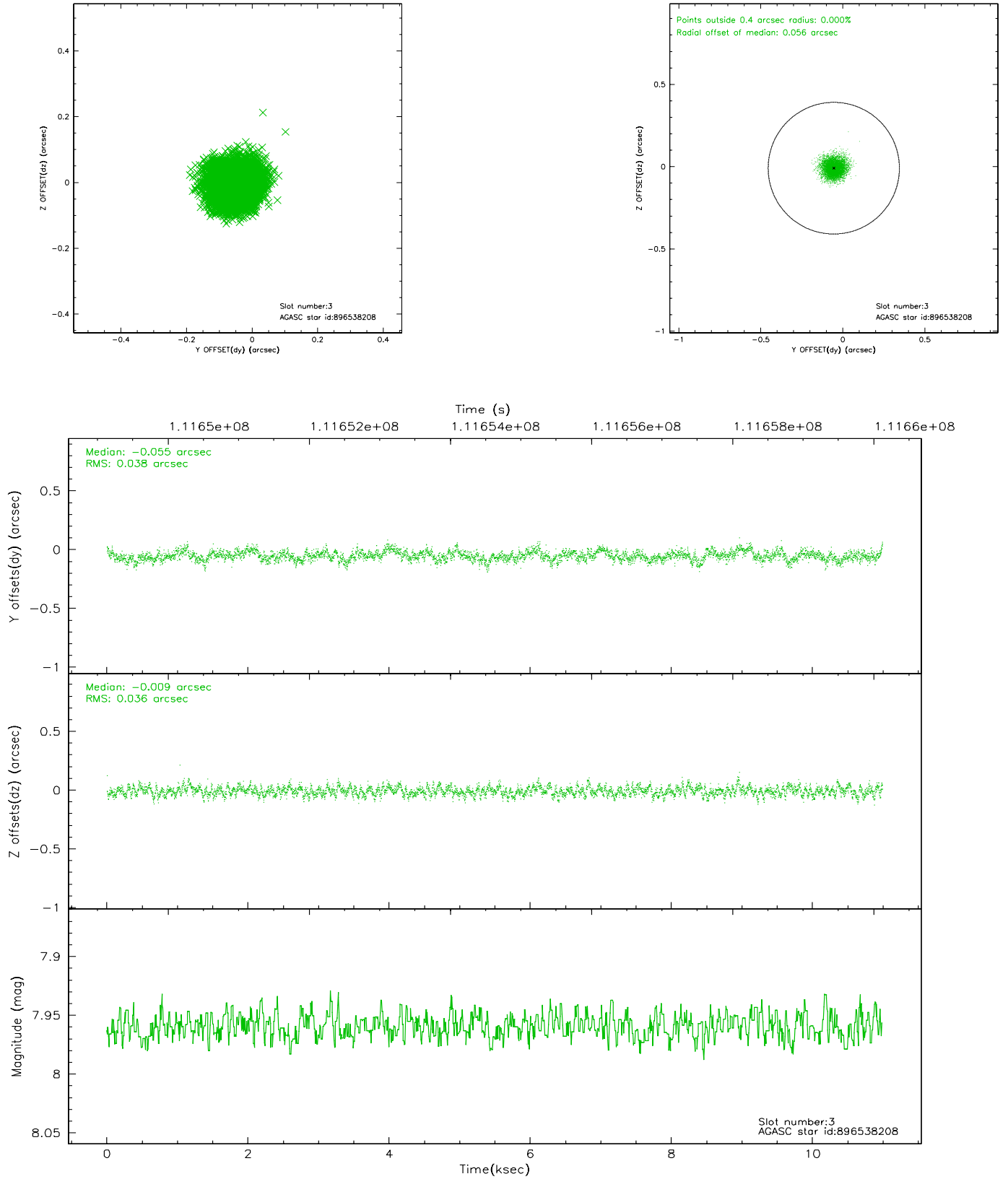
### Slot Statistics

slot	status	id	mag	n_pts	med_dy	med_dz	dr1	dr2	ra	dec	mean_y	mean_z
0	FID	ACIS-I-3	7.44	2680	-0.021	0.205	0.027	0.047	0.000000	0.000000	54.69	-961.98
1	FID	ACIS-I-4	7.17	2680	-0.050	-0.070	0.033	0.044	0.000000	0.000000	2157.24	1070.50
2	FID	ACIS-I-5	7.23	2681	-0.030	-0.065	0.026	0.050	0.000000	0.000000	-1810.11	1068.96
3	GUIDE	896538208	7.96	5360	-0.055	-0.009	0.056	0.092	267.176969	-28.671626	1708.99	669.54
4	GUIDE	896011040	7.69	5360	-0.066	0.039	0.049	0.079	267.058469	-28.014759	-677.04	865.55
5	GUIDE	896535464	9.32	5362	0.024	-0.165	0.069	0.115	266.962550	-28.408631	628.56	234.78
6	GUIDE	896540672	8.99	5362	0.041	0.054	0.069	0.111	266.662941	-28.185372	-375.30	-499.75
7	GUIDE	896538248	8.89	5359	0.054	0.082	0.069	0.110	266.238138	-28.240101	-496.08	-1856.45

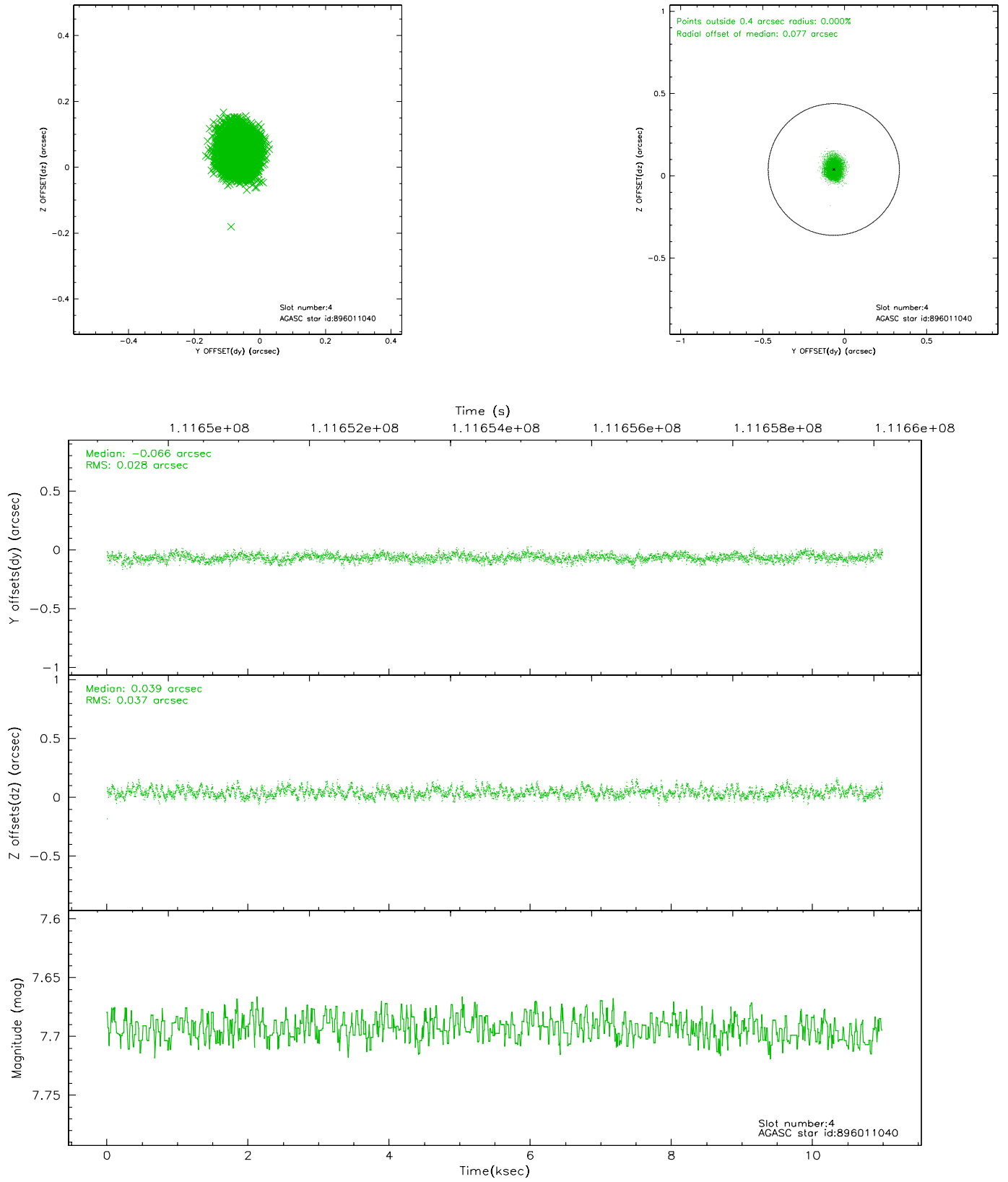


## 2.4 Star Slots

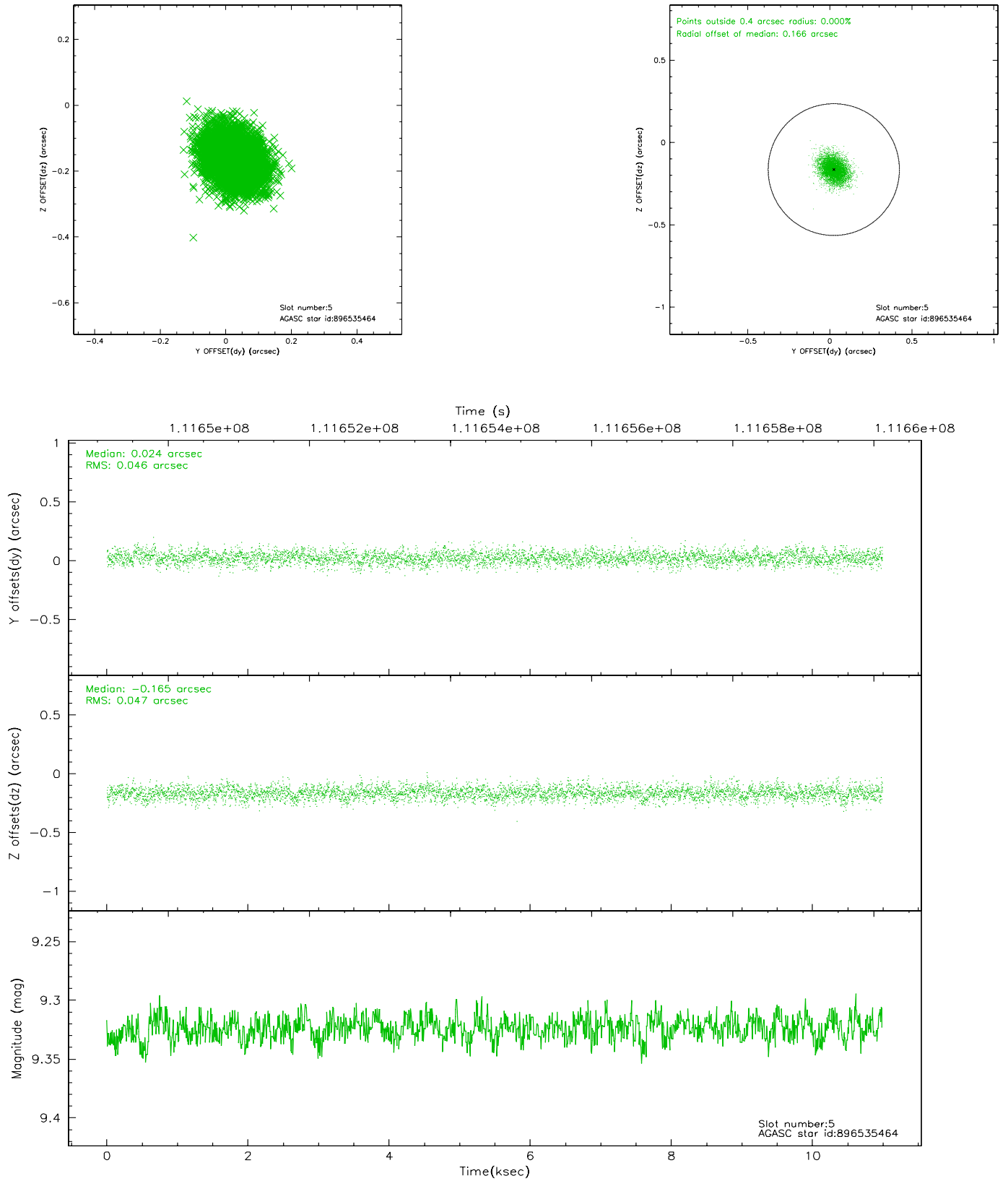
### 2.4.1 Slot 3



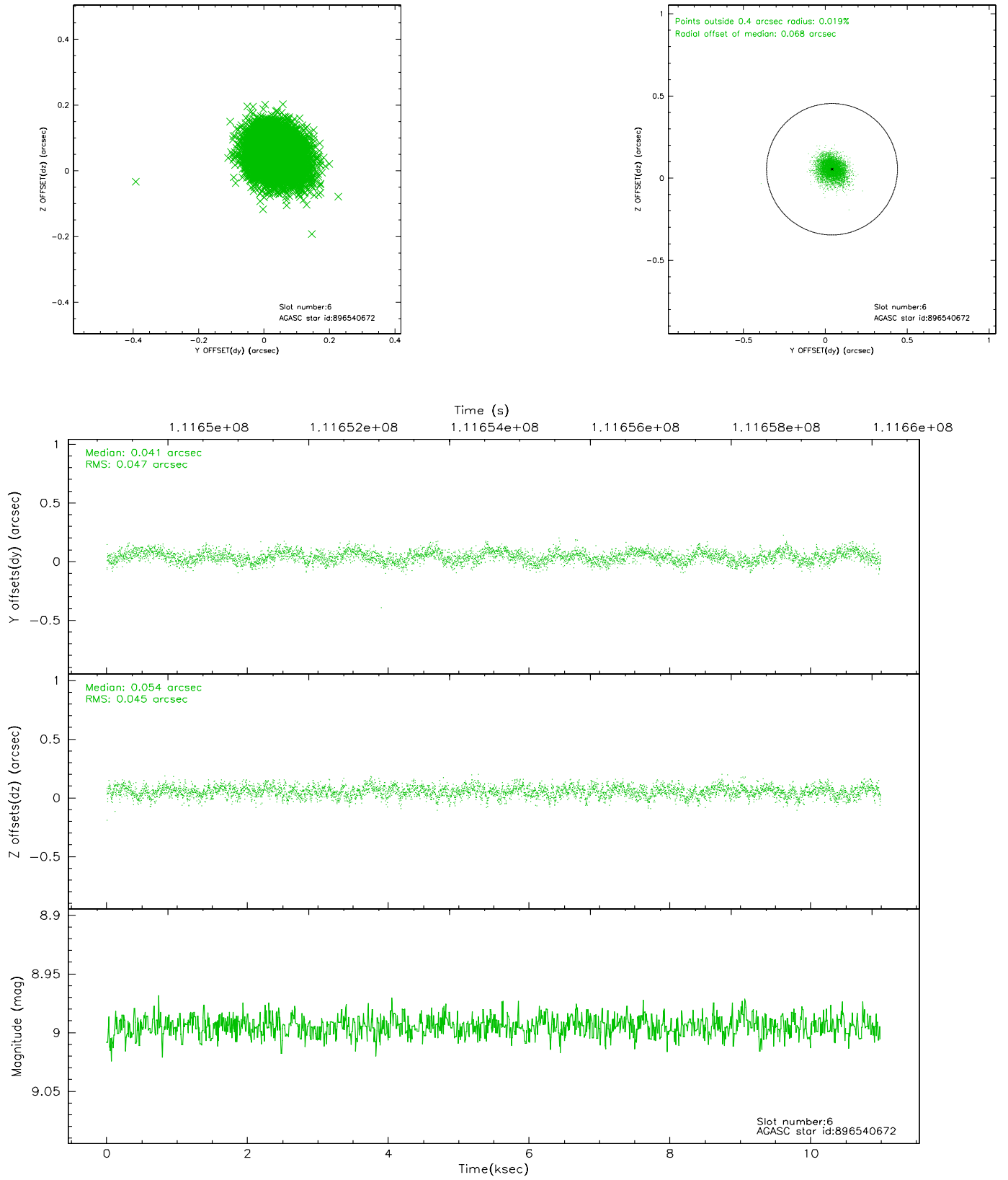
## 2.4.2 Slot 4



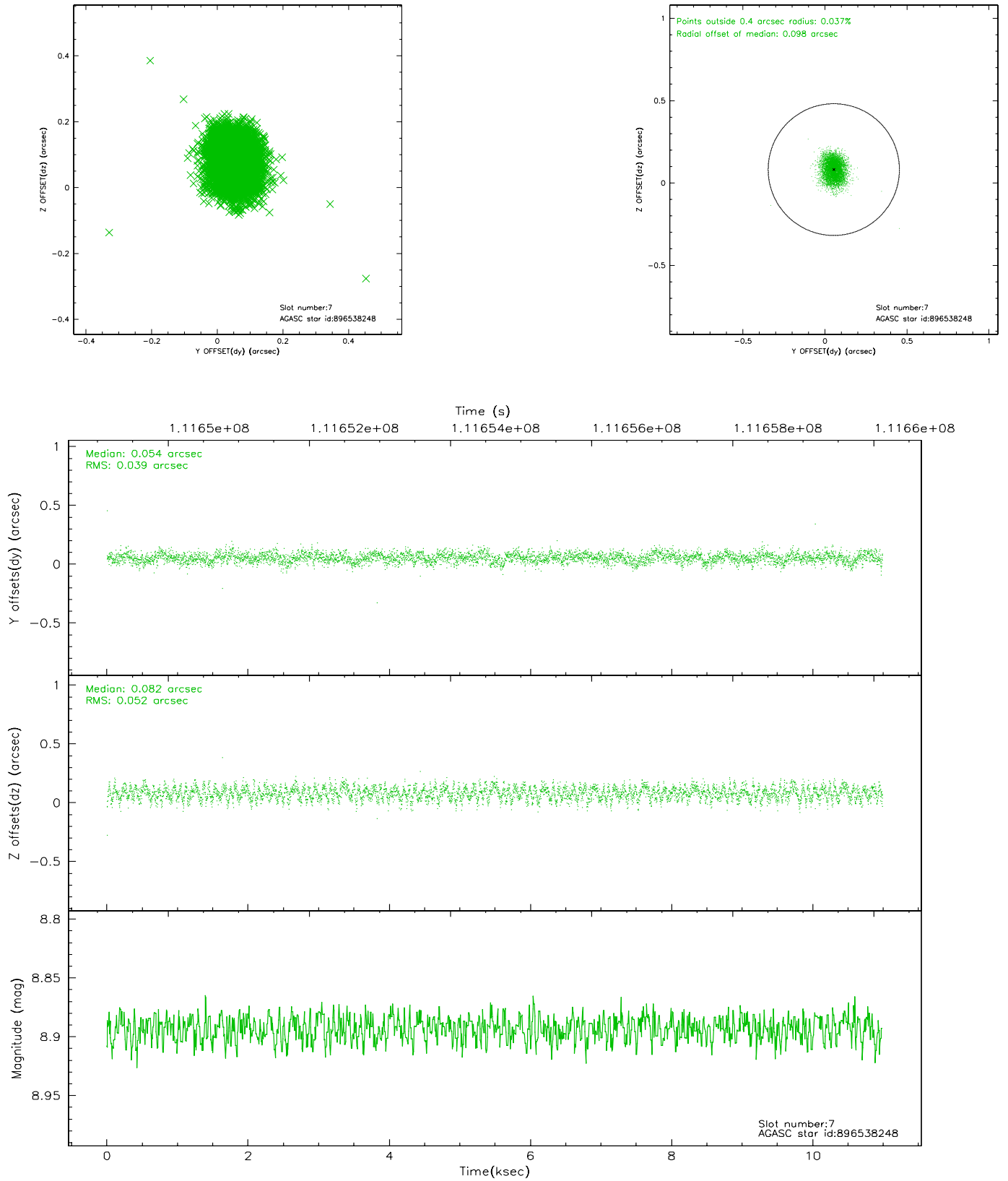
### 2.4.3 Slot 5



## 2.4.4 Slot 6

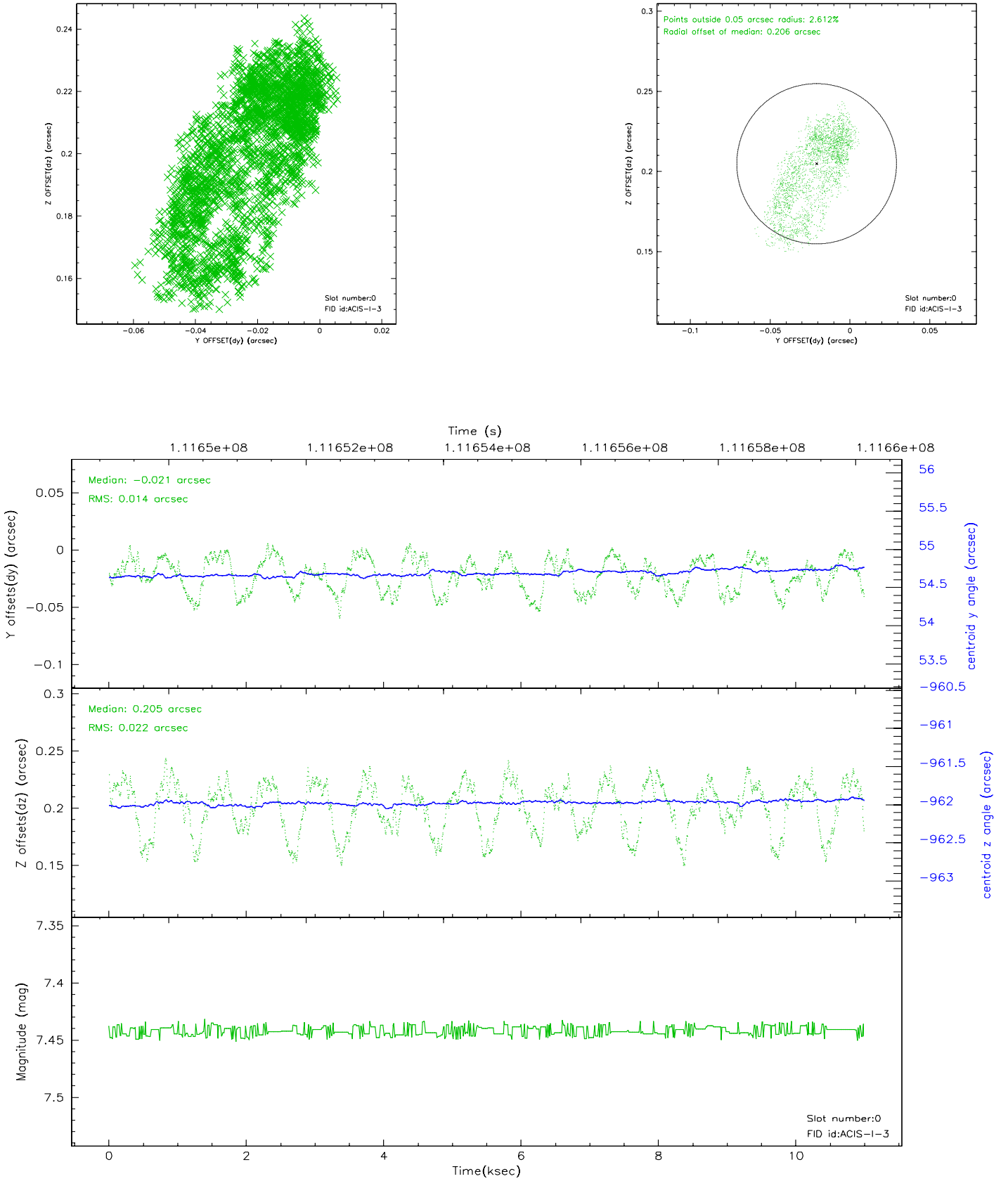


## 2.4.5 Slot 7

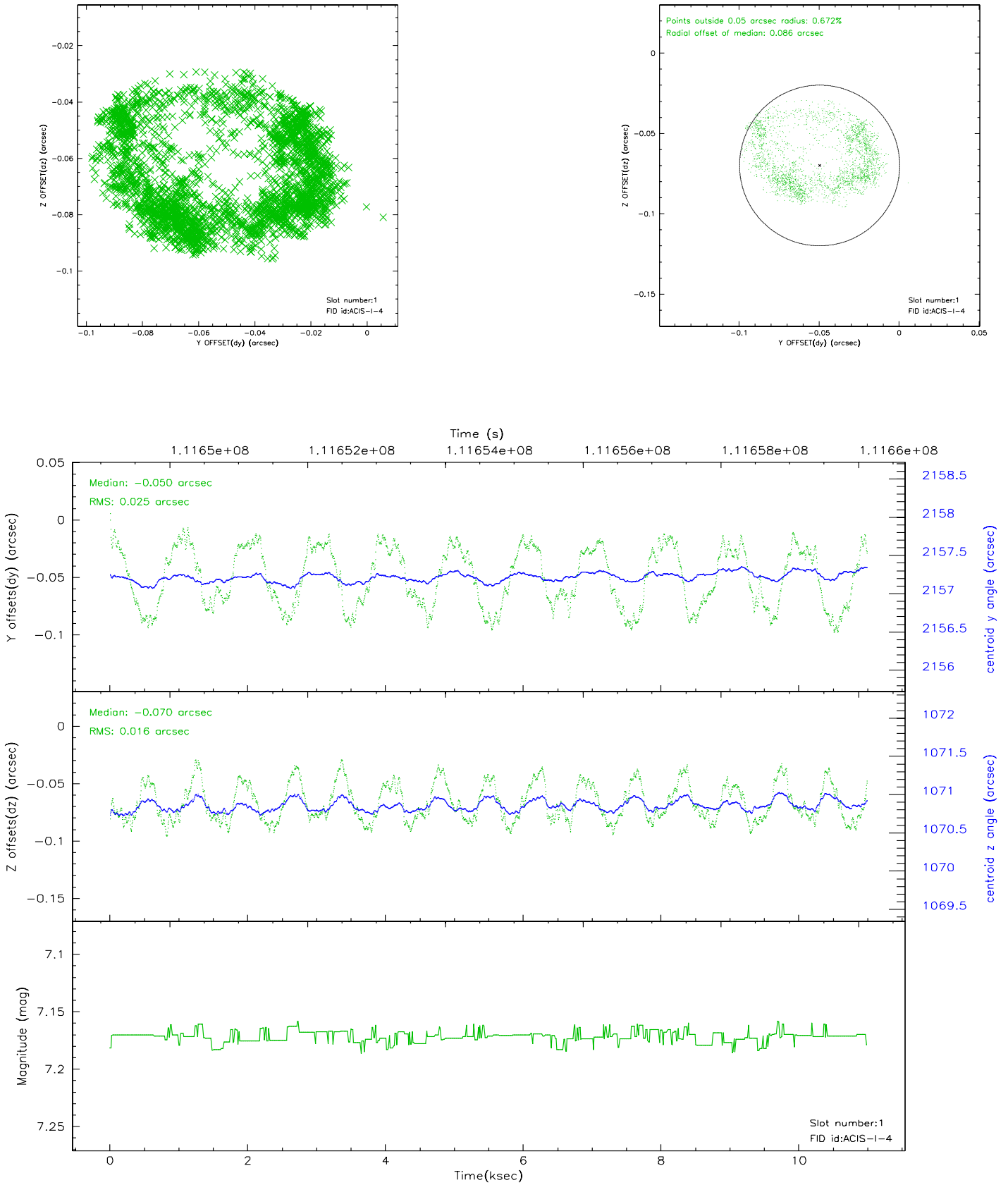


## 2.5 FID Slots

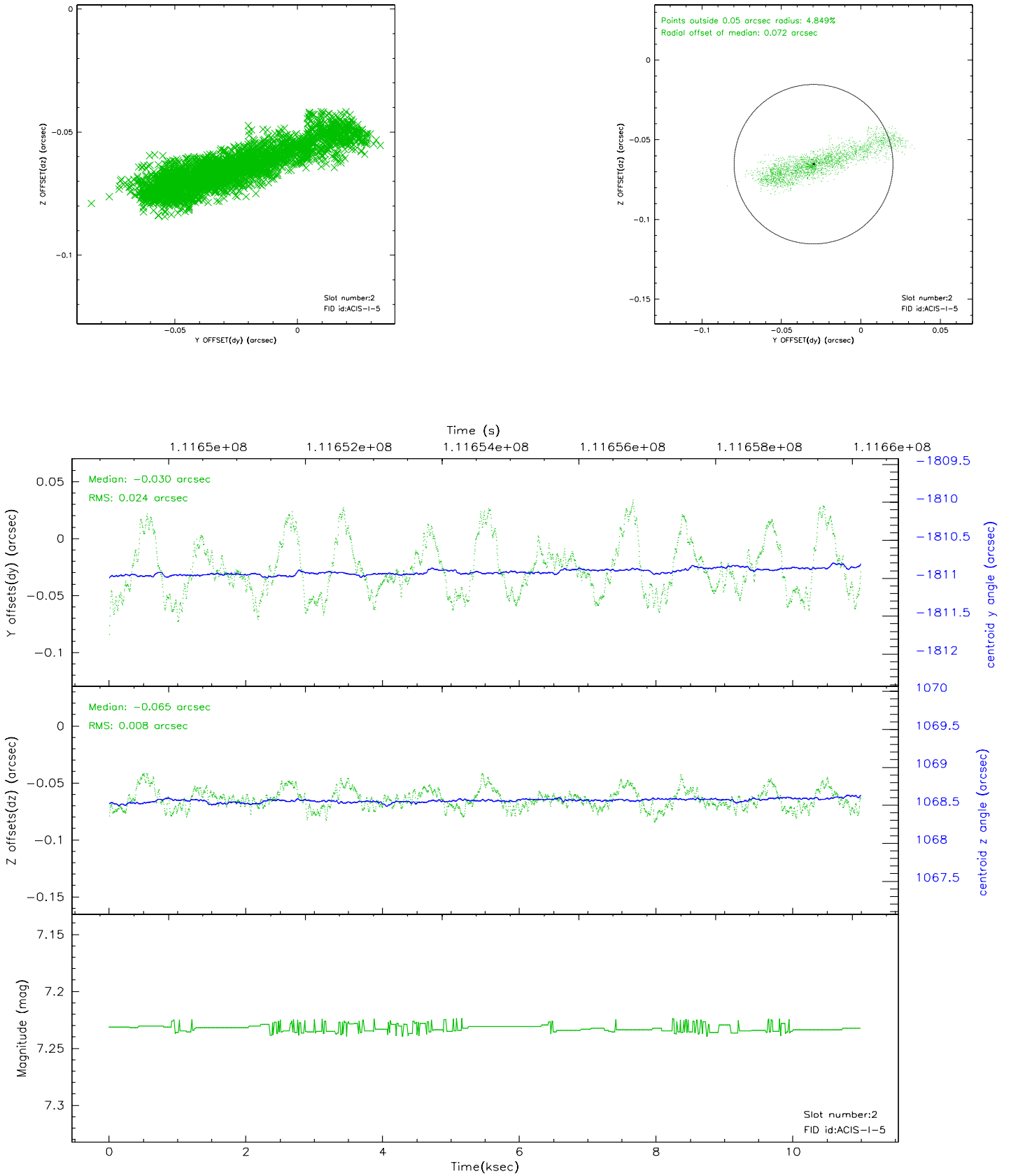
### 2.5.1 Slot 0



## 2.5.2 Slot 1

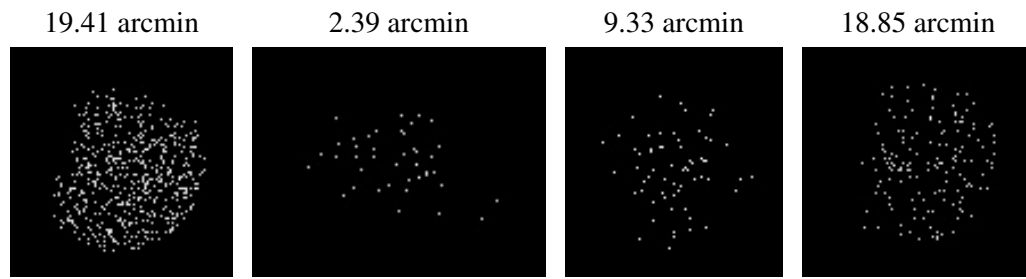


### 2.5.3 Slot 2





### 3 Point Sources



## A Summary

### A.1 Status

V&V Scientist	Jen Lauer
V&V Date (YYYY-MM-DD)	2006.12.14
V&V Edition	1
V&V Disposition and Status	OK
V&V Charge Time	10.55

### A.2 Comments

Roll constraint met.