

# V&V Reference Report

## L2 ASCDS Version : 7.6.9

Observation 2270 - L2 Version 001  
Chandra X-Ray Center

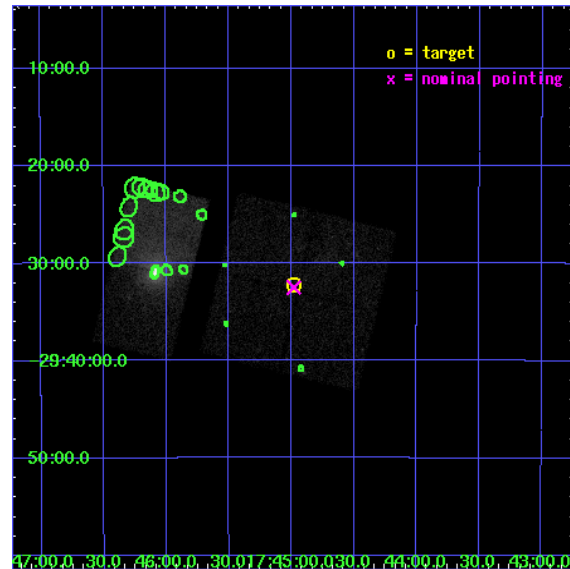
L2 Processing Date : Dec 14 2006

## Contents

<b>1</b>	<b>Front</b>	<b>2</b>
<b>2</b>	<b>OBI</b>	<b>3</b>
2.1	OBI . . . . .	3
2.1.1	Images . . . . .	3
2.1.2	Bias . . . . .	3
2.1.3	Parameters . . . . .	4
2.1.4	Events . . . . .	4
2.2	Compared Parameters . . . . .	5
2.3	Aspect . . . . .	6
2.4	Star Slots . . . . .	9
2.4.1	Slot 3 . . . . .	9
2.4.2	Slot 4 . . . . .	10
2.4.3	Slot 5 . . . . .	11
2.4.4	Slot 6 . . . . .	12
2.4.5	Slot 7 . . . . .	13
2.5	FID Slots . . . . .	14
2.5.1	Slot 0 . . . . .	14
2.5.2	Slot 1 . . . . .	15
2.5.3	Slot 2 . . . . .	16
<b>3</b>	<b>Point Sources</b>	<b>17</b>
<b>A</b>	<b>Summary</b>	<b>18</b>
A.1	Status . . . . .	18
A.2	Comments . . . . .	18

# 1 Front

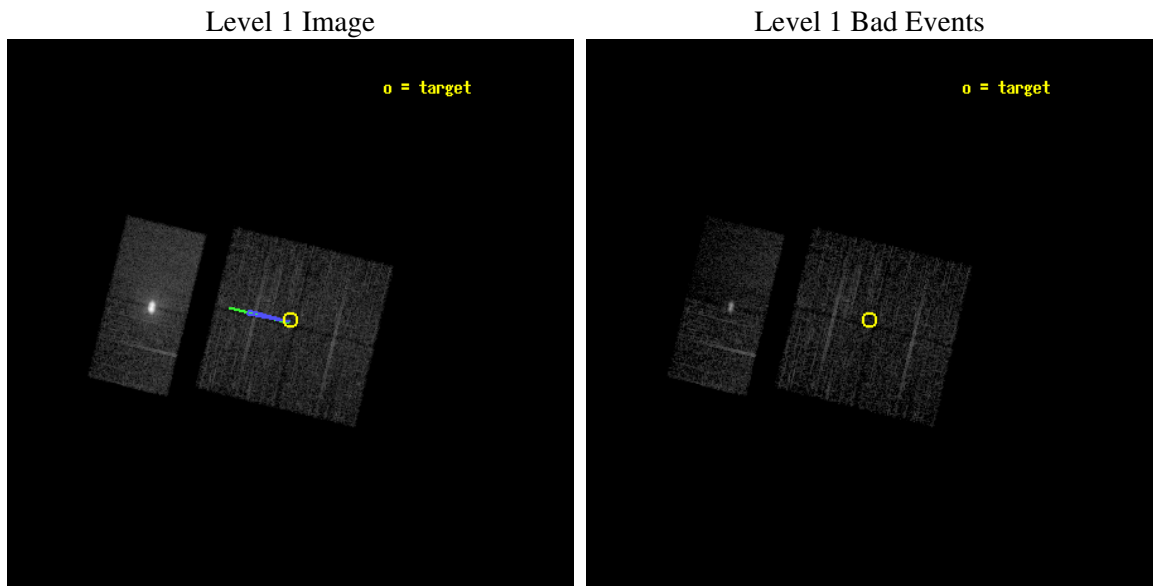
seq_num	900097
obs_id	2270
title	CHANDRA SURVEY OF THE GALACTIC RIDGE AROUND THE MILKY WAY CENTER
observer	Prof. Q. Daniel Wang
object	GCS 22
dtcycle	0
cycle	P
ra_targ	266.246
dec_targ	-29.537
ra_nom	266.24515490601
dec_nom	-29.541680538749
roll_nom	283.80727832019
revision	2
ontime	10755.200010017
livetime	10619.011191486
ontime0	10755.200010017
ontime1	10751.959039763
ontime2	10745.477059349
ontime3	10755.200010017
ontime6	10755.200010017
ontime7	10755.200010017
l2events	98032



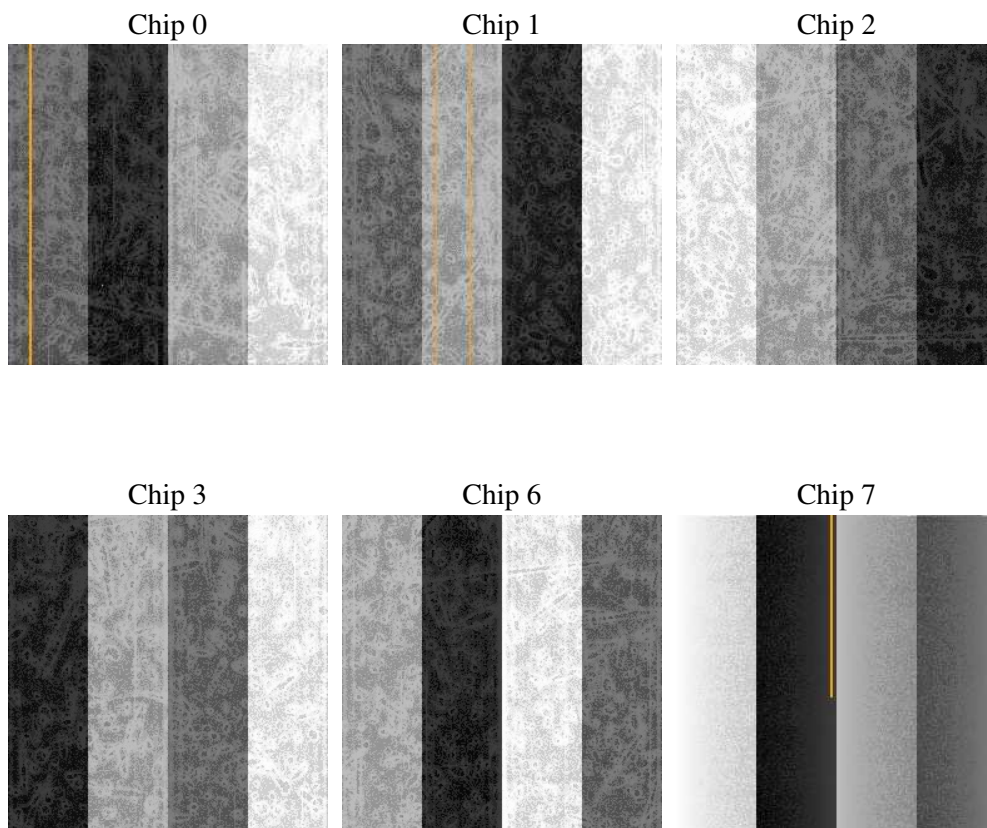
## 2 OBI

### 2.1 OBI

#### 2.1.1 Images



#### 2.1.2 Bias



### 2.1.3 Parameters

obi_num	0
ascdsver	7.6.9
caldbver	3.2.4
date	2006-12-14T14:34:11
revision	2

sched_exp_time	11000.000000
ontime	10760.140031084
ontime0	10760.140031084
ontime1	10756.89906083
ontime2	10750.417080417
ontime3	10760.140031084
ontime6	10760.140031084
ontime7	10760.140031084
l1events	238140

### 2.1.4 Events

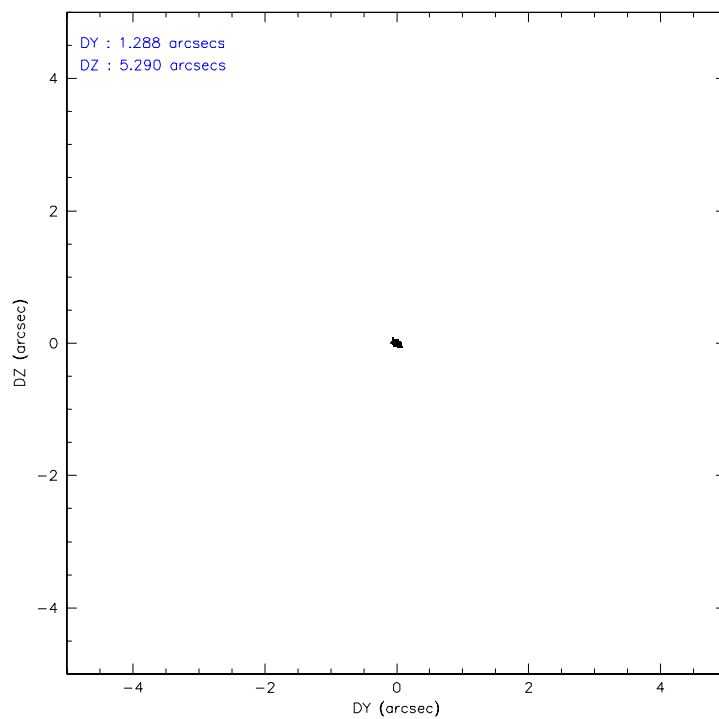
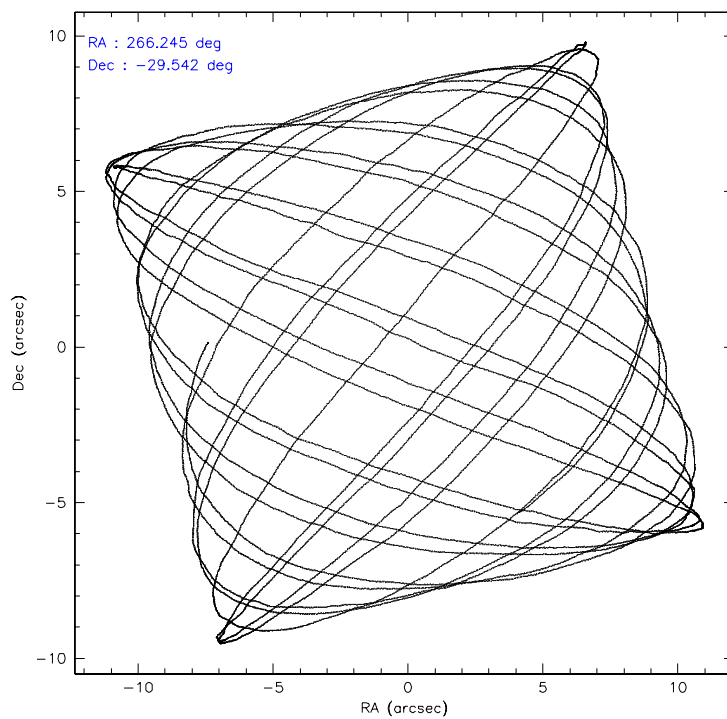
	ccd 0	ccd 1	ccd 2	ccd 3	ccd 6	ccd 7
level 1 events	26230	29110	28989	30734	60548	62529
rejected events	20730	21754	23488	24428	25587	19321
rejected %	79%	74%	81%	79%	42%	30%

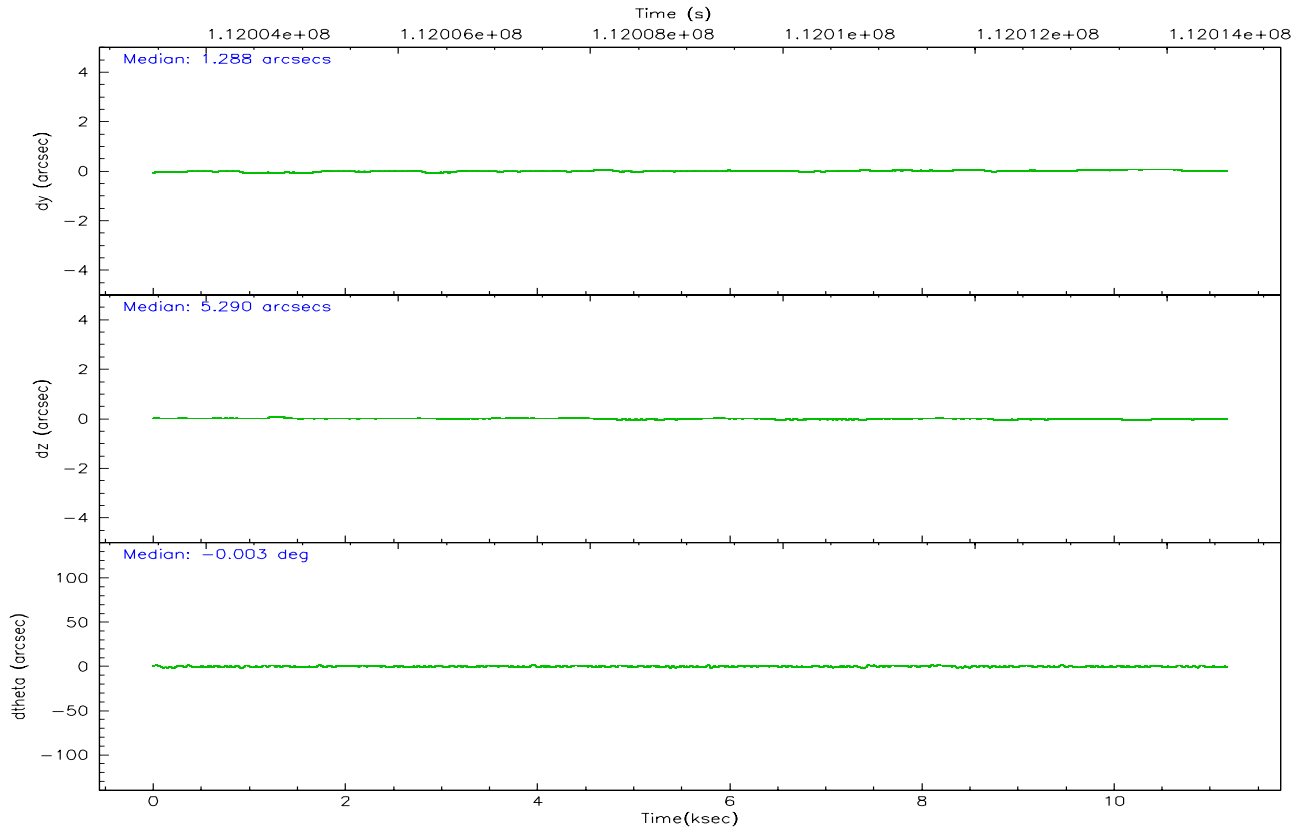
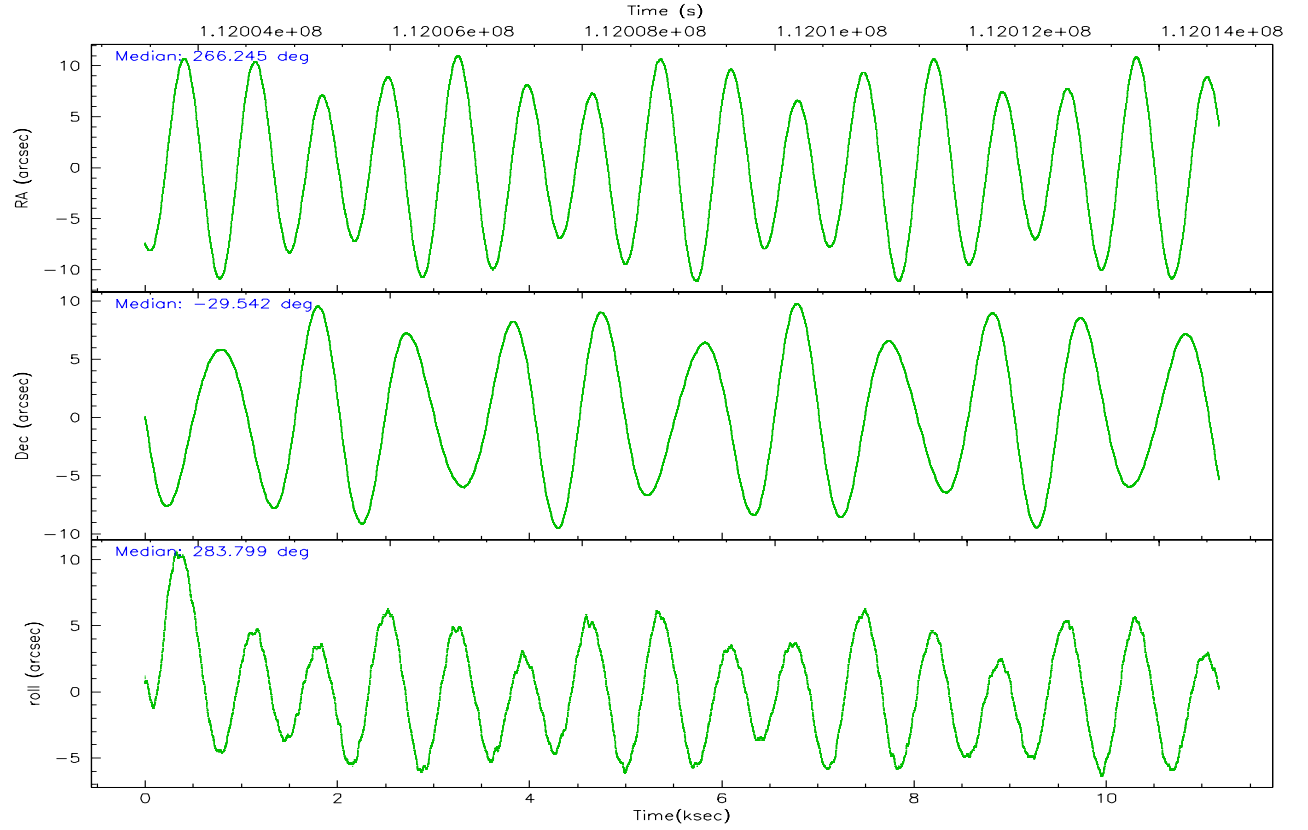
	ccd 0	ccd 1	ccd 2	ccd 3	ccd 6	ccd 7
grade 0 events	2623	3733	2909	3281	22771	3973
	10%	12%	10%	10%	37%	6%
grade 1 events	32	33	31	35	276	51
	0%	0%	0%	0%	0%	0%
grade 2 events	1086	1392	982	1198	5259	11802
	4%	4%	3%	3%	8%	18%
grade 3 events	457	555	423	502	1814	2957
	1%	1%	1%	1%	2%	4%
grade 4 events	447	569	426	463	1789	2783
	1%	1%	1%	1%	2%	4%
grade 5 events	1163	1203	1012	1268	1541	3348
	4%	4%	3%	4%	2%	5%
grade 6 events	888	1111	764	864	3347	21736
	3%	3%	2%	2%	5%	34%
grade 7 events	19534	20514	22442	23123	23751	15879
	74%	70%	77%	75%	39%	25%

## 2.2 Compared Parameters

Parameter	Planned	Actual	Parameter	Planned	Actual
Instrument	ACIS	ACIS	Obspar format version number	6	6
Detector	ACIS-012367	ACIS-012367	Obspar file type	PREDICTED	ACTUAL
Grating	NONE	NONE	Obspar update status	NONE	UPDATED
Data mode	FAINT	FAINT	Number of optional ACIS chips dropped	0	0
Observation mode	POINTING	POINTING	On-chip summing requested	N	N
Pointing RA	266.223279	266.2451549060093	Subarray requested	NONE	NONE
Pointing Dec	-29.521888	-29.54168053874906	Alternating exposures requested	N	N
Pointing Roll	283.587809	283.8072783201923	Primary exposure time	0.000000	3.2
Roll angle	283.600000	283.600000			
Roll tolerance	2.000000	2.000000			
Roll constraint allows 180D rotation	N	N			
SIM focus pos (mm)	-0.782348	-0.7809083437167272			
SIM defocus (mm)	0	0.001439871863259334			
SIM translation stage pos (mm)	-233.592463	-233.5874344608287			
SIM translation stage offset (mm)	0	-0.005018542100998502			
Observation start time	112003626.184000	112003249.93449			
Observation start date	2001-07-20T08:06:02	2001-07-20T08:00:49			
Observation end time	112014626.184000	112014760.17244			
Observation end date	2001-07-20T11:09:22	2001-07-20T11:12:40			
Read mode	TIMED	TIMED			

## 2.3 Aspect





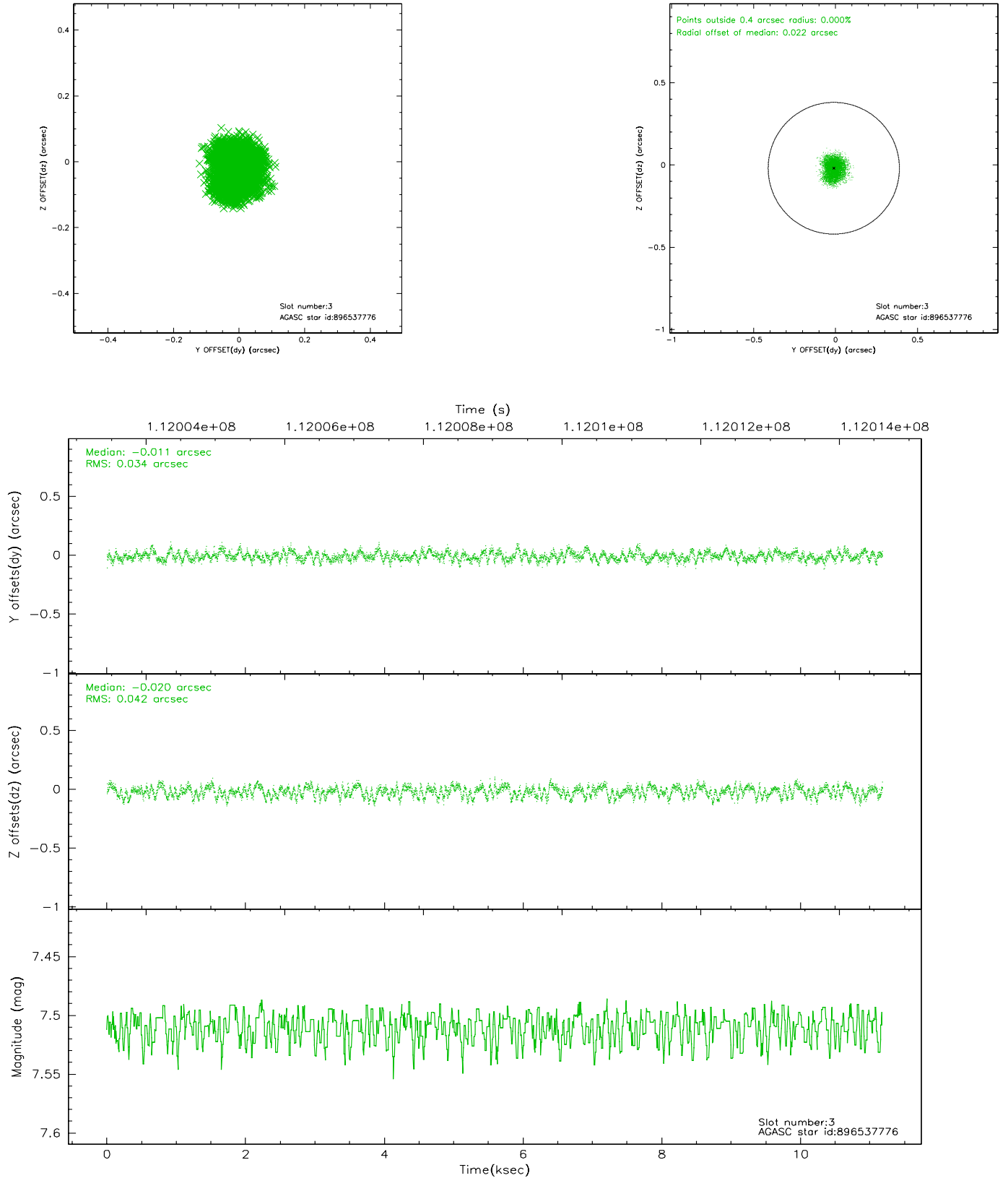
### Slot Statistics

slot	status	id	mag	n_pts	med_dy	med_dz	dr1	dr2	ra	dec	mean_y	mean_z
0	FID	ACIS-I-2	7.15	2728	-0.012	-0.026	0.008	0.015	0.000000	0.000000	-755.62	-835.04
1	FID	ACIS-I-4	7.19	2726	-0.078	0.024	0.005	0.009	0.000000	0.000000	2158.14	1070.99
2	FID	ACIS-I-5	7.23	2727	-0.011	0.071	0.008	0.014	0.000000	0.000000	-1808.88	1069.37
3	GUIDE	896537776	7.51	5453	-0.011	-0.020	0.059	0.090	266.655684	-29.665673	822.52	1193.16
4	GUIDE	896541360	7.71	5454	-0.069	0.067	0.046	0.074	266.684478	-29.453744	103.19	1463.01
5	GUIDE	896540808	7.50	5454	-0.066	0.056	0.072	0.107	265.985401	-29.308604	-921.66	-544.96
6	GUIDE	896536320	8.97	5455	0.041	-0.015	0.066	0.108	266.369048	-29.307026	-644.95	626.73
7	GUIDE	966924920	8.10	5455	0.117	-0.083	0.071	0.126	265.875401	-30.176961	2039.09	-1606.01

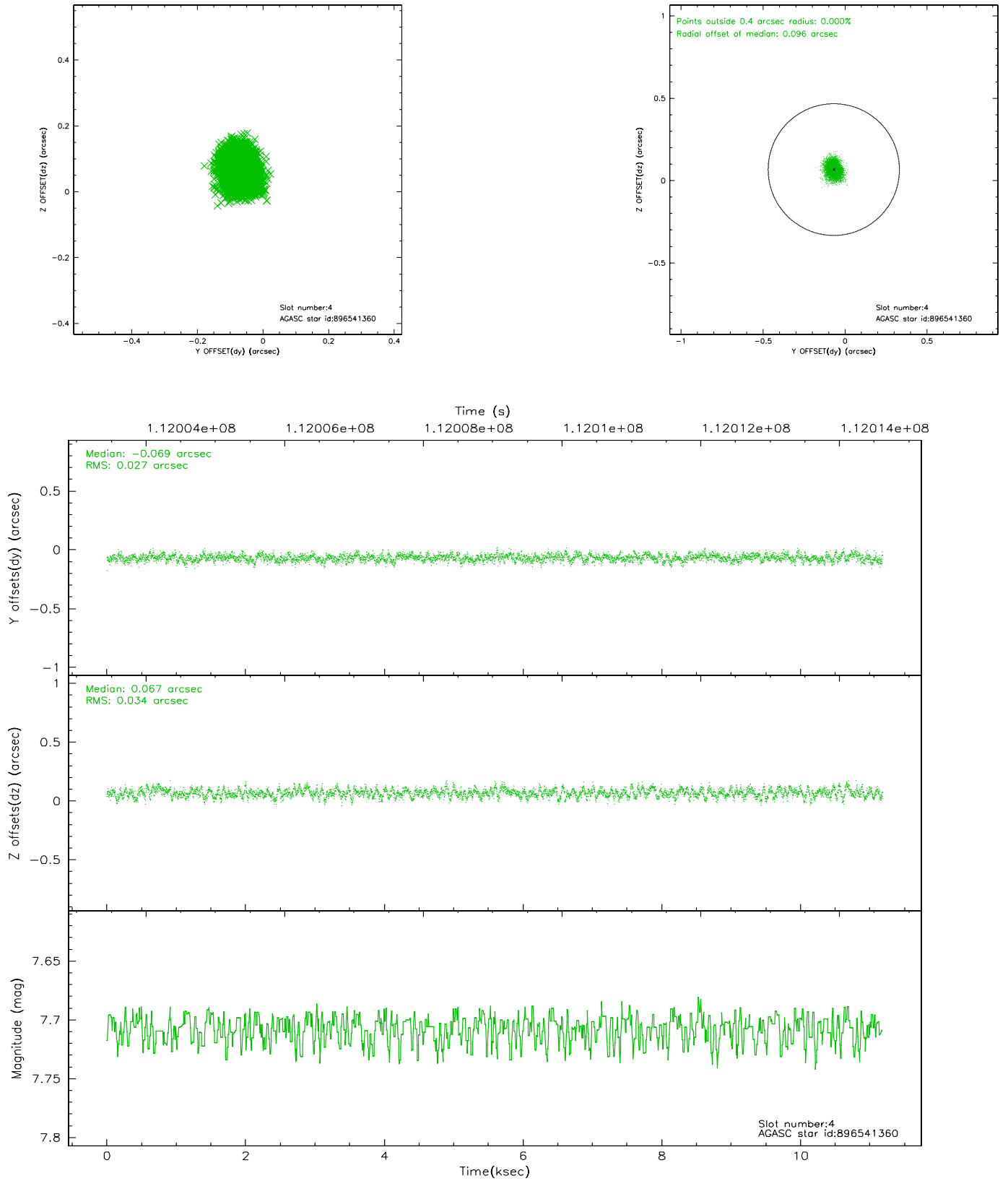


## 2.4 Star Slots

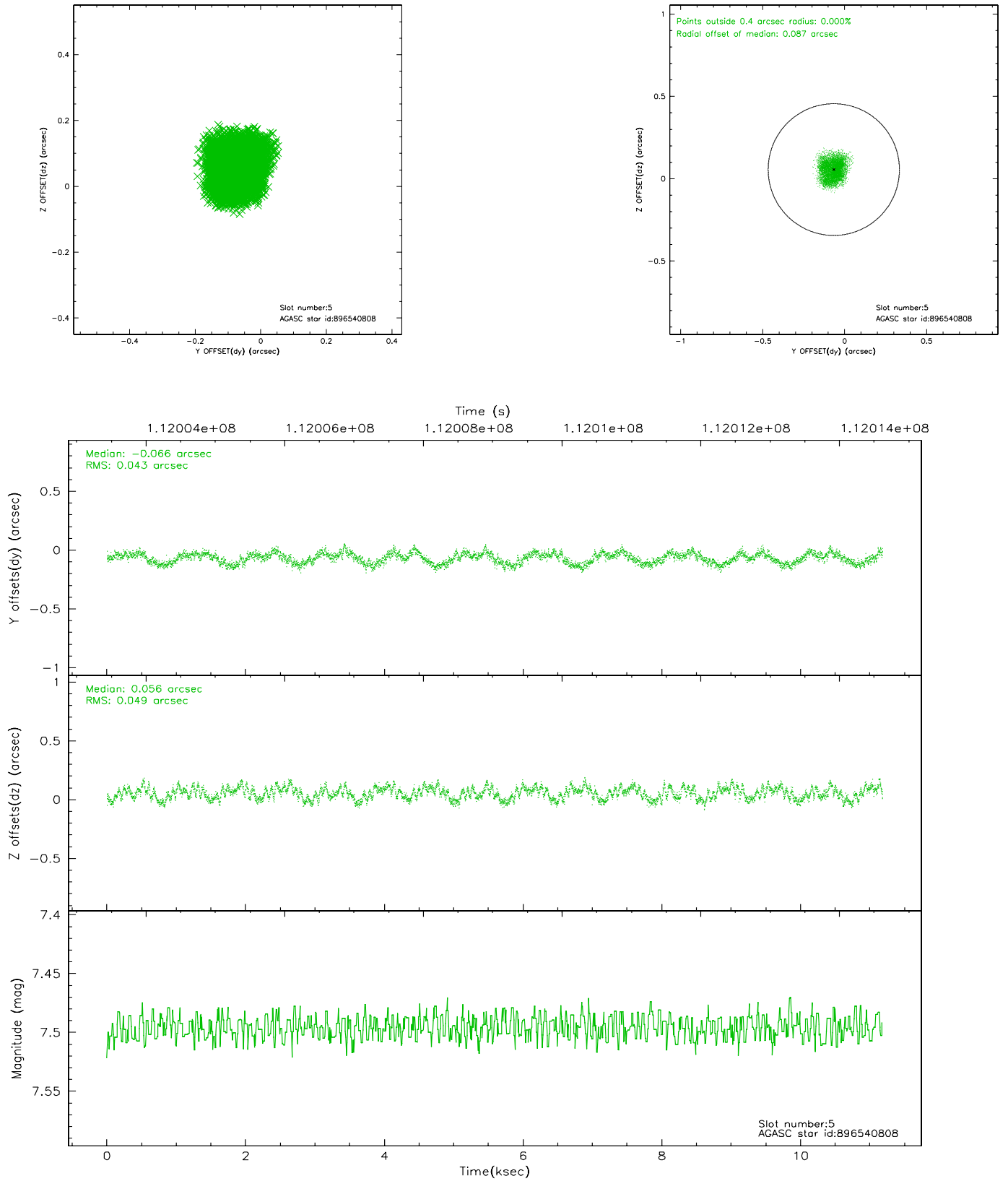
### 2.4.1 Slot 3



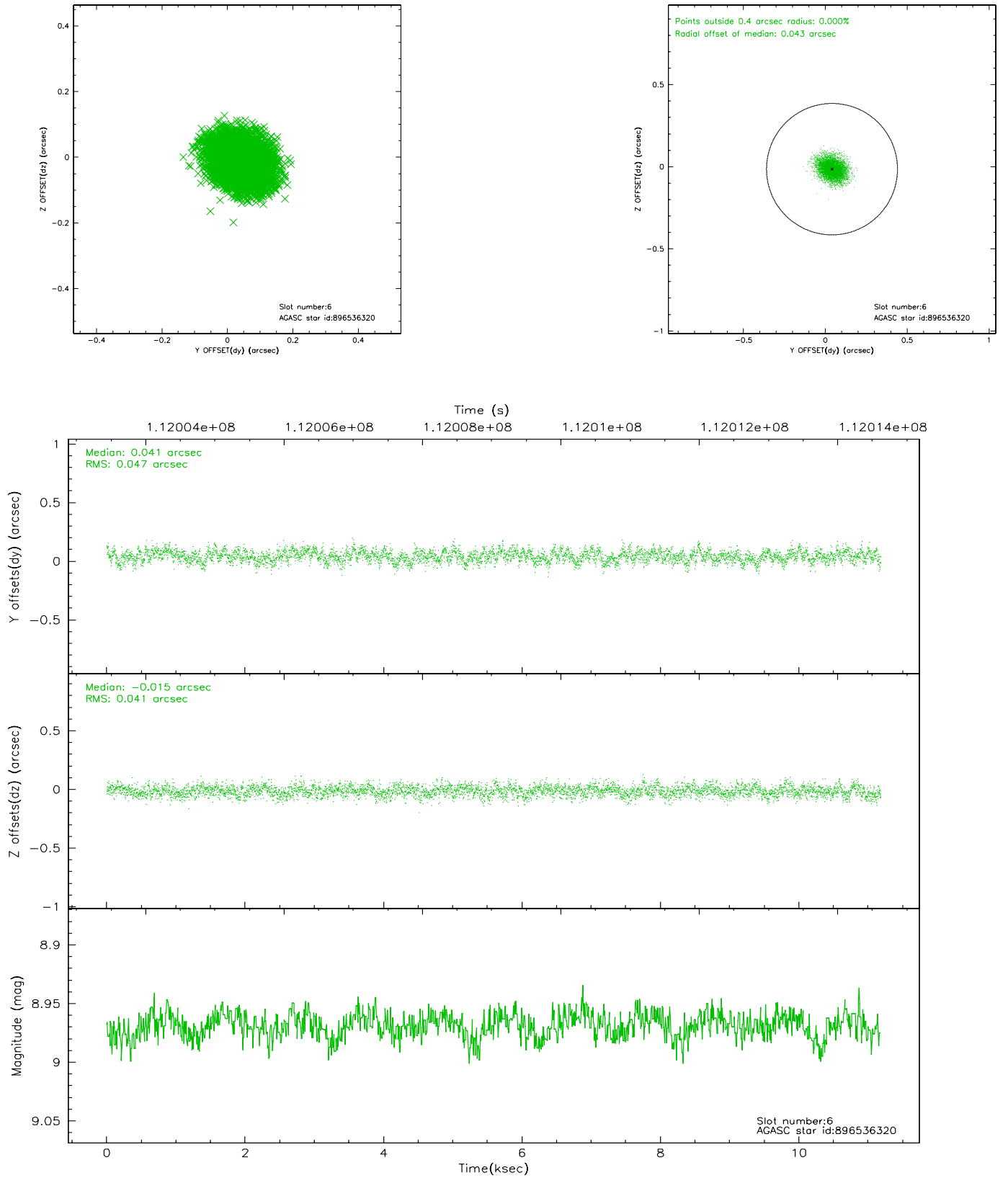
## 2.4.2 Slot 4



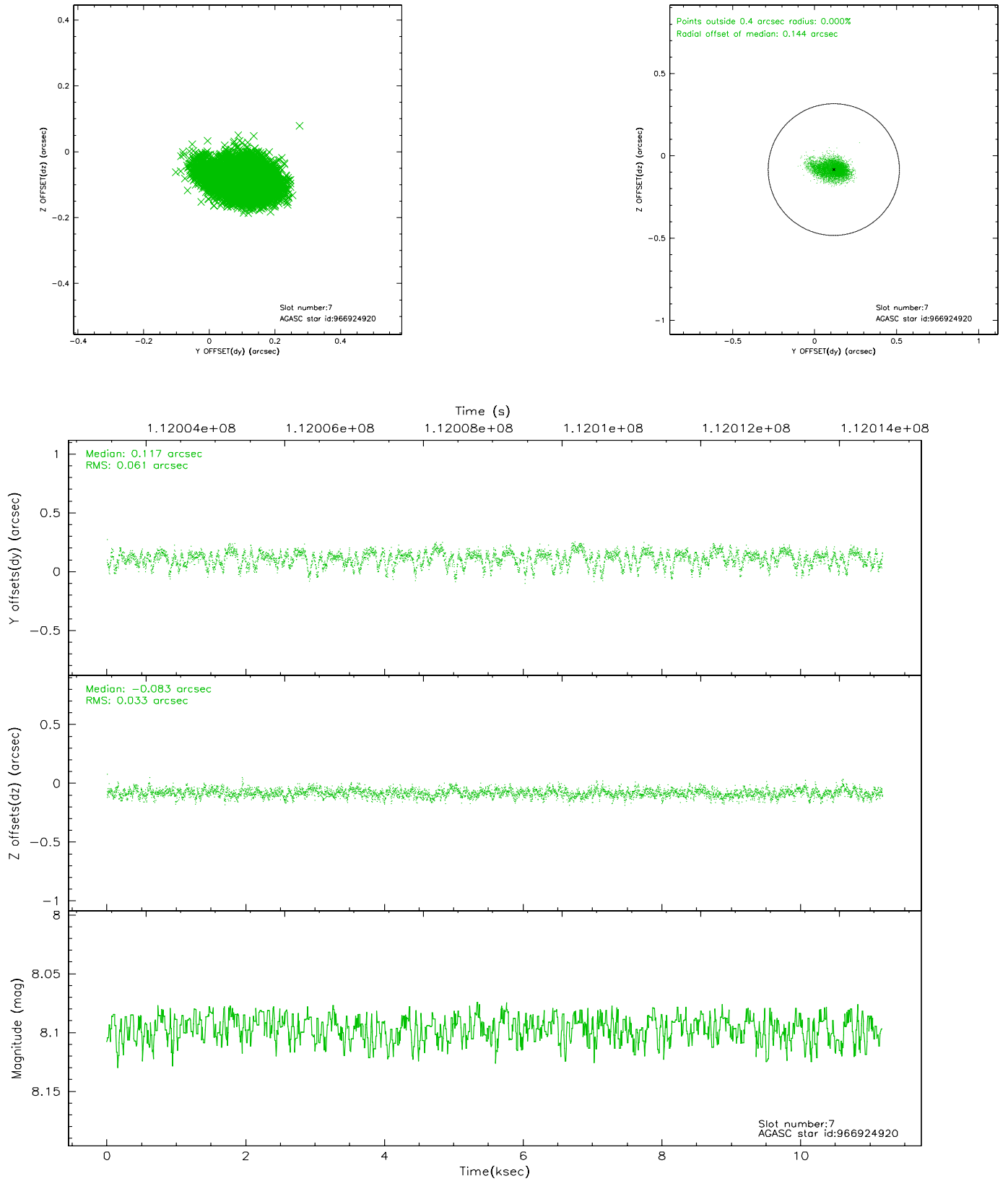
### 2.4.3 Slot 5



## 2.4.4 Slot 6

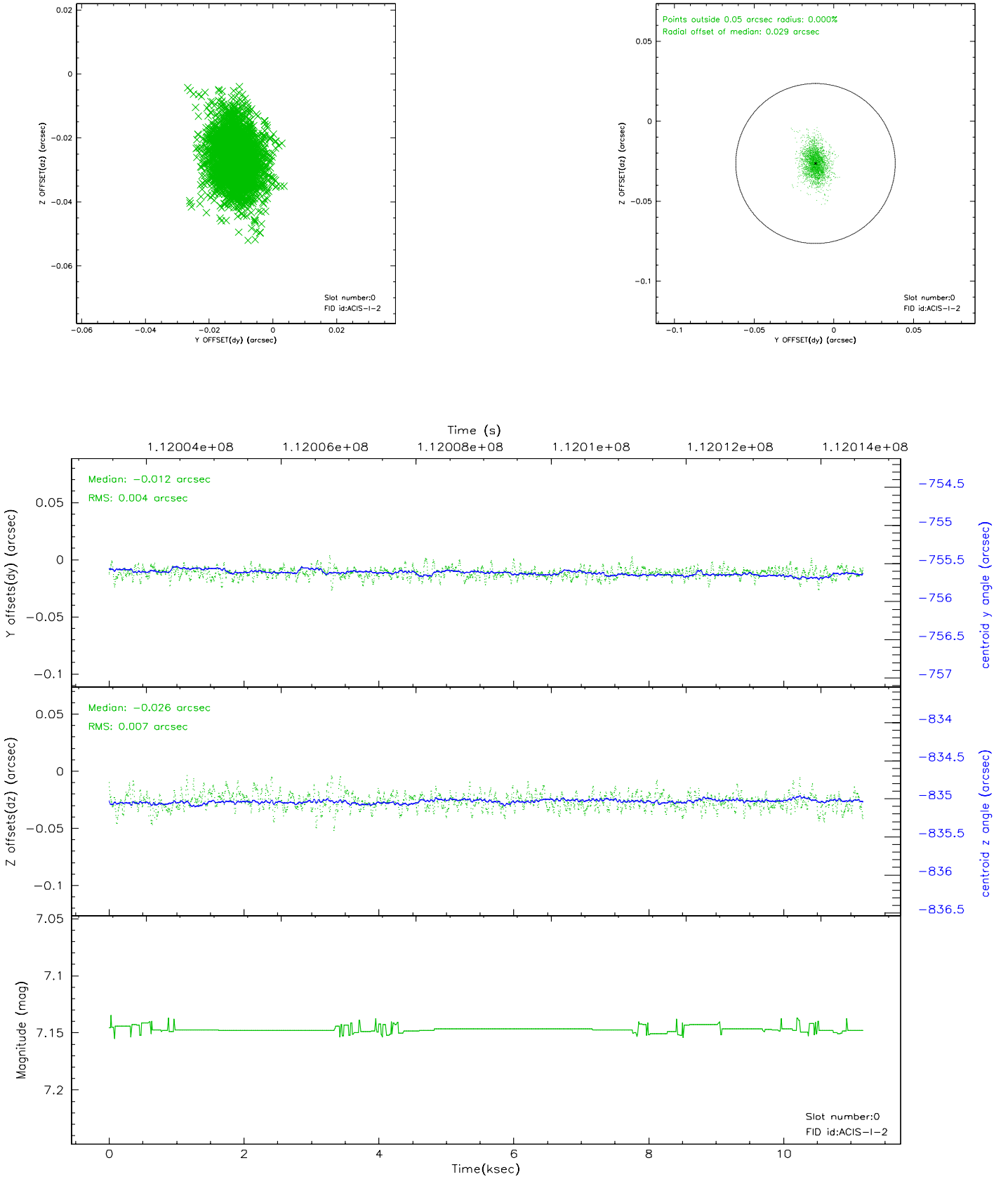


## 2.4.5 Slot 7

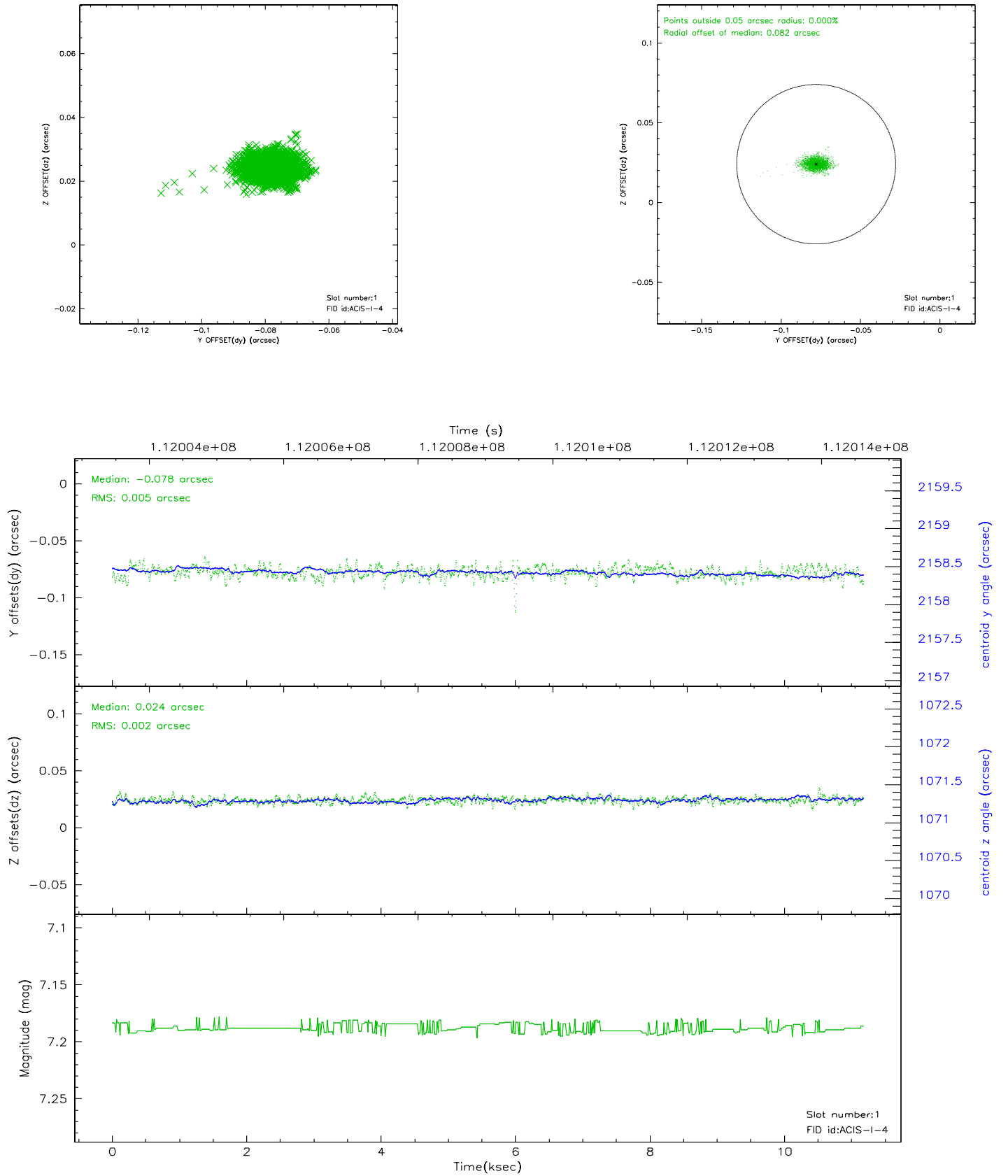


## 2.5 FID Slots

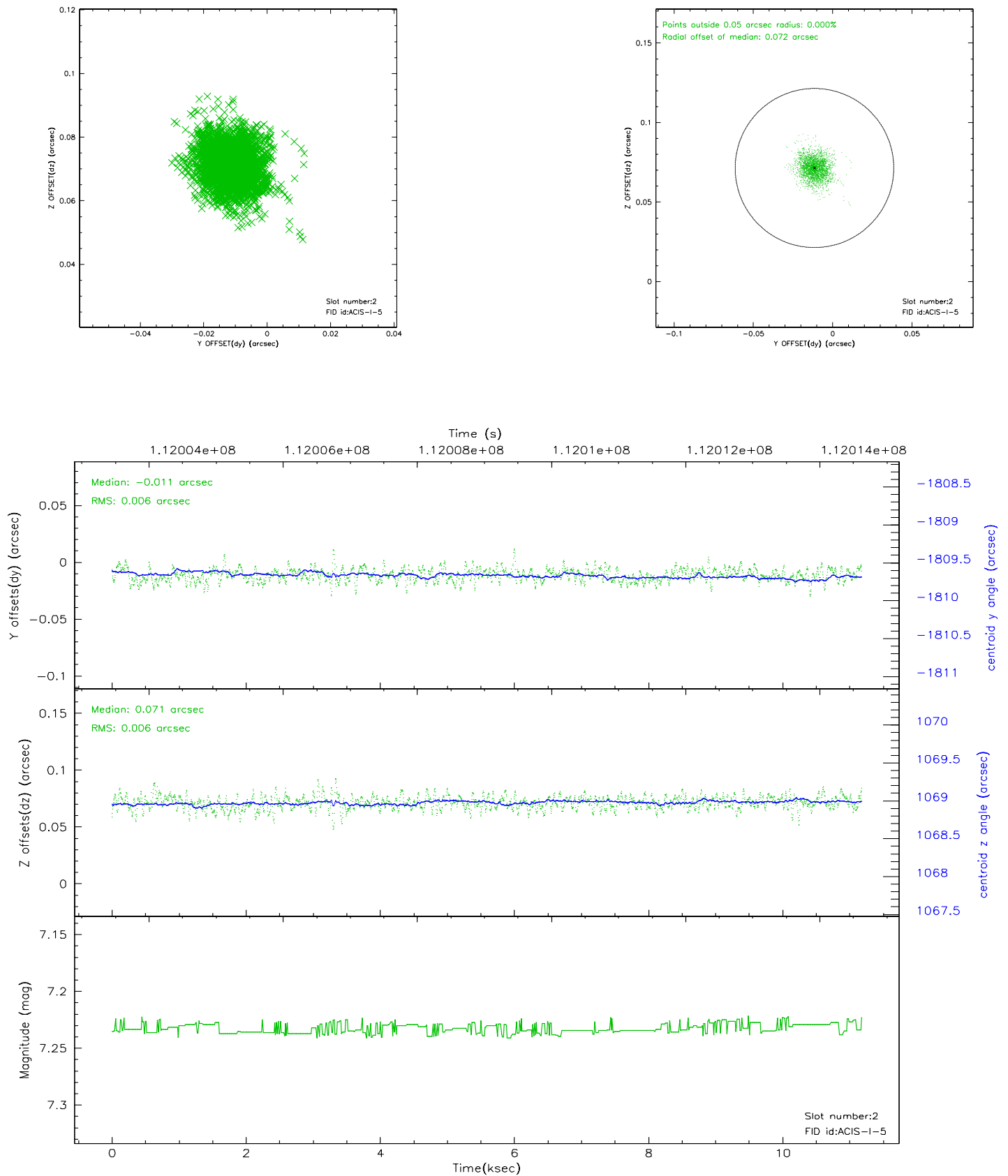
### 2.5.1 Slot 0



## 2.5.2 Slot 1

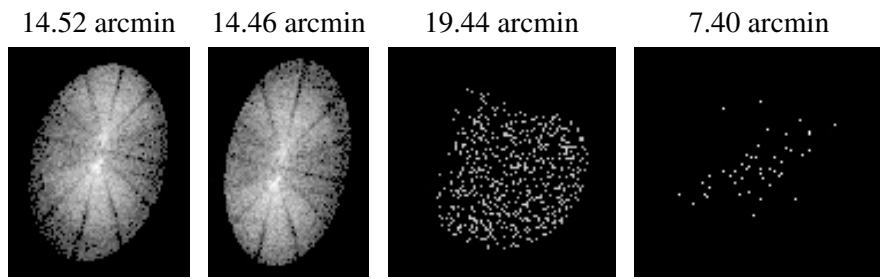


### 2.5.3 Slot 2





### 3 Point Sources



## A Summary

### A.1 Status

V&V Scientist	Jen Lauer
V&V Date (YYYY-MM-DD)	2006.12.14
V&V Edition	1
V&V Disposition and Status	OK
V&V Charge Time	10.8

### A.2 Comments

Roll constraint met.