

V&V Reference Report

L2 ASCDS Version : 7.6.9

Observation 2269 - L2 Version 001
Chandra X-Ray Center

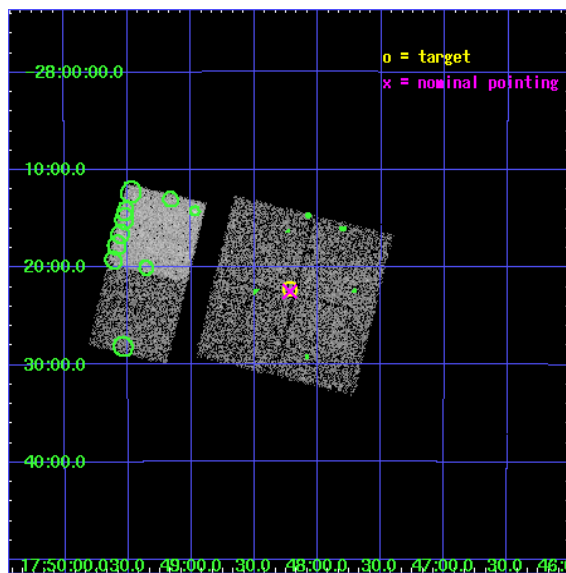
L2 Processing Date : Dec 14 2006

Contents

1	Front	2
2	OBI	3
2.1	OBI	3
2.1.1	Images	3
2.1.2	Bias	3
2.1.3	Parameters	4
2.1.4	Events	4
2.2	Compared Parameters	5
2.3	Aspect	6
2.4	Star Slots	9
2.4.1	Slot 3	9
2.4.2	Slot 4	10
2.4.3	Slot 5	11
2.4.4	Slot 6	12
2.4.5	Slot 7	13
2.5	FID Slots	14
2.5.1	Slot 0	14
2.5.2	Slot 1	15
2.5.3	Slot 2	16
3	Point Sources	17
A	Summary	18
A.1	Status	18
A.2	Comments	18

1 Front

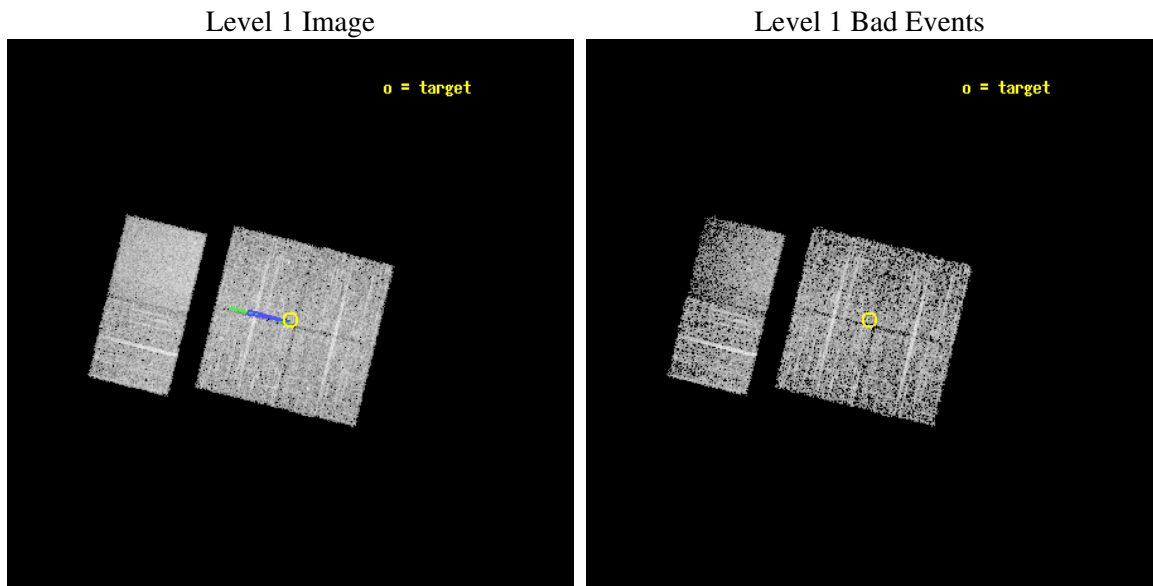
seq_num	900096
obs_id	2269
title	CHANDRA SURVEY OF THE GALACTIC RIDGE AROUND THE MILKY WAY CENTER
observer	Prof. Q. Daniel Wang
object	GCS 1
dtcycle	0
cycle	P
ra_targ	267.056
dec_targ	-28.3705
ra_nom	267.0551774945
dec_nom	-28.37520884904
roll_nom	283.80734639047
revision	2
ontime	10745.559029758
livetime	10609.492291124
ontime0	10748.800010011
ontime1	10748.800010011
ontime2	10748.800010011
ontime3	10745.559029758
ontime6	10748.800010011
ontime7	10748.800010011
l2events	40678



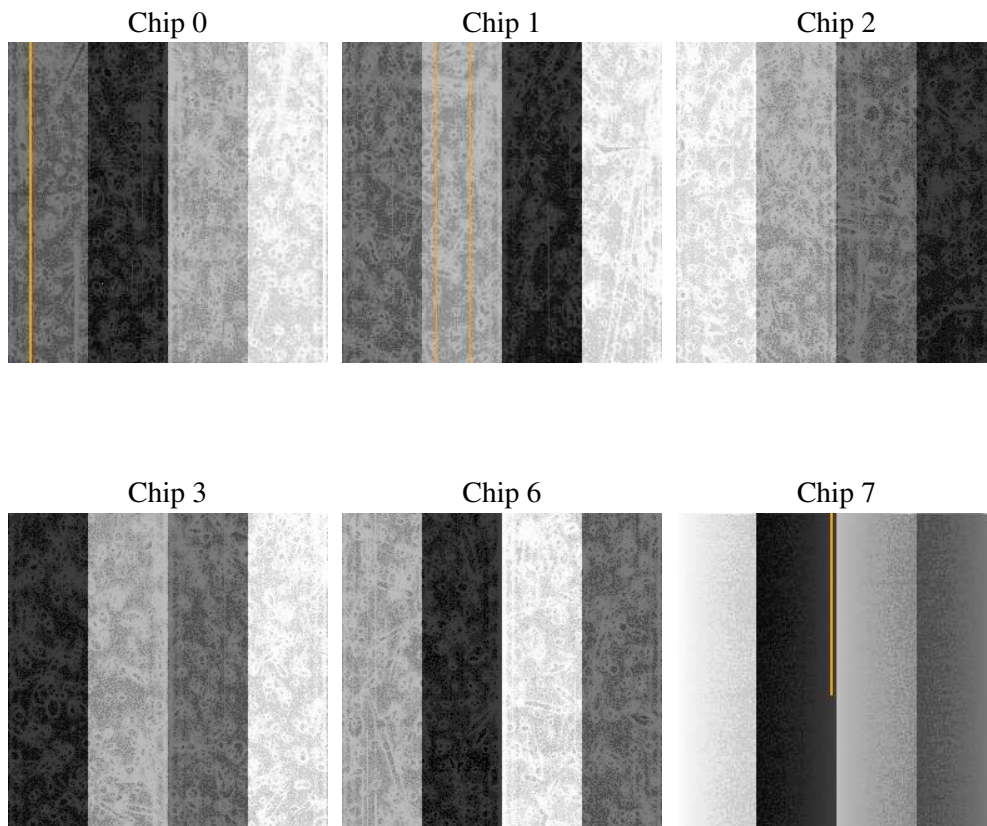
2 OBI

2.1 OBI

2.1.1 Images



2.1.2 Bias



2.1.3 Parameters

obi_num	0
ascdsver	7.6.9
caldbver	3.2.4
date	2006-12-14T09:11:42
revision	2

sched_exp_time	10800.000000
ontime	10750.408890486
ontime0	10753.649870738
ontime1	10753.649870738
ontime2	10753.649870738
ontime3	10750.408890486
ontime6	10753.649870738
ontime7	10753.649900645
l1events	174800

2.1.4 Events

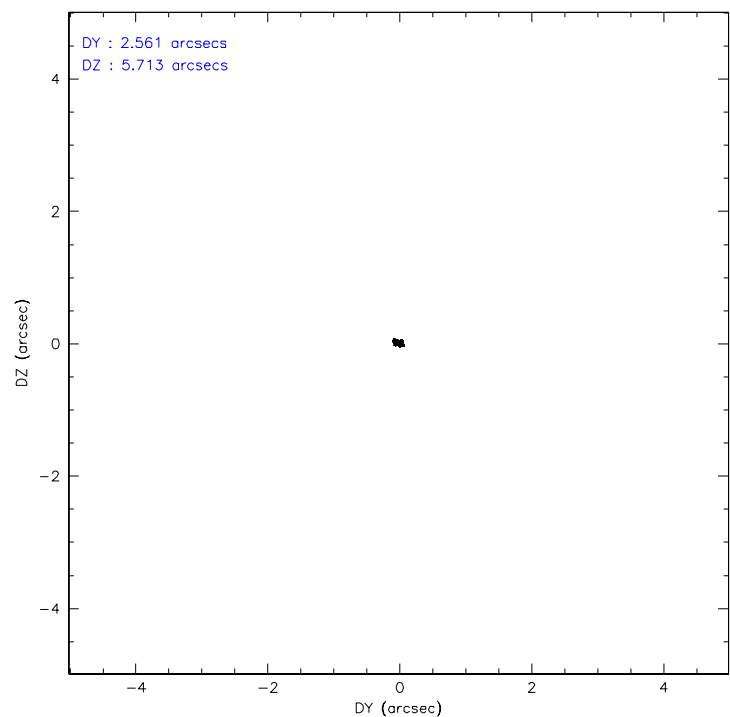
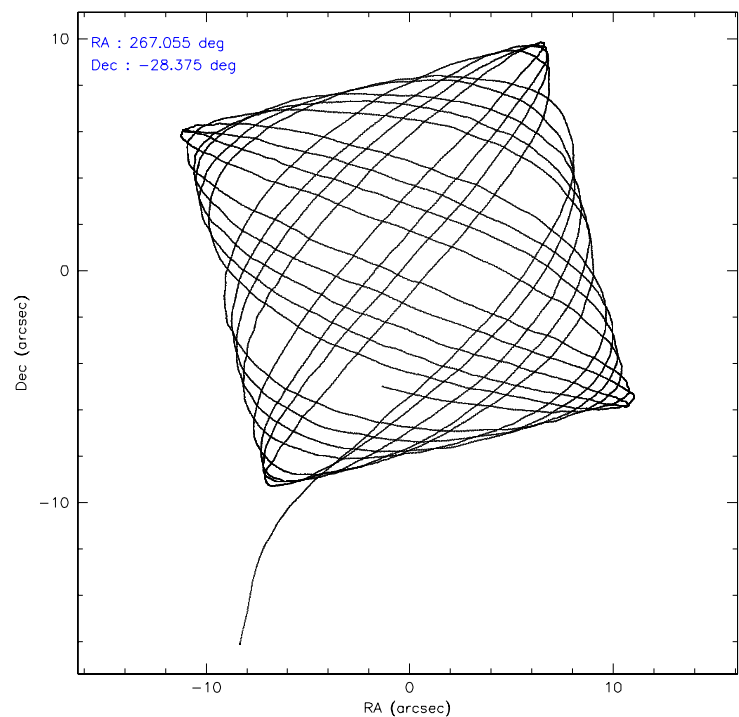
	ccd 0	ccd 1	ccd 2	ccd 3	ccd 6	ccd 7
level 1 events	25968	27088	29110	28089	29184	35361
rejected events	20616	21297	24396	22786	24373	17832
rejected %	79%	78%	83%	81%	83%	50%

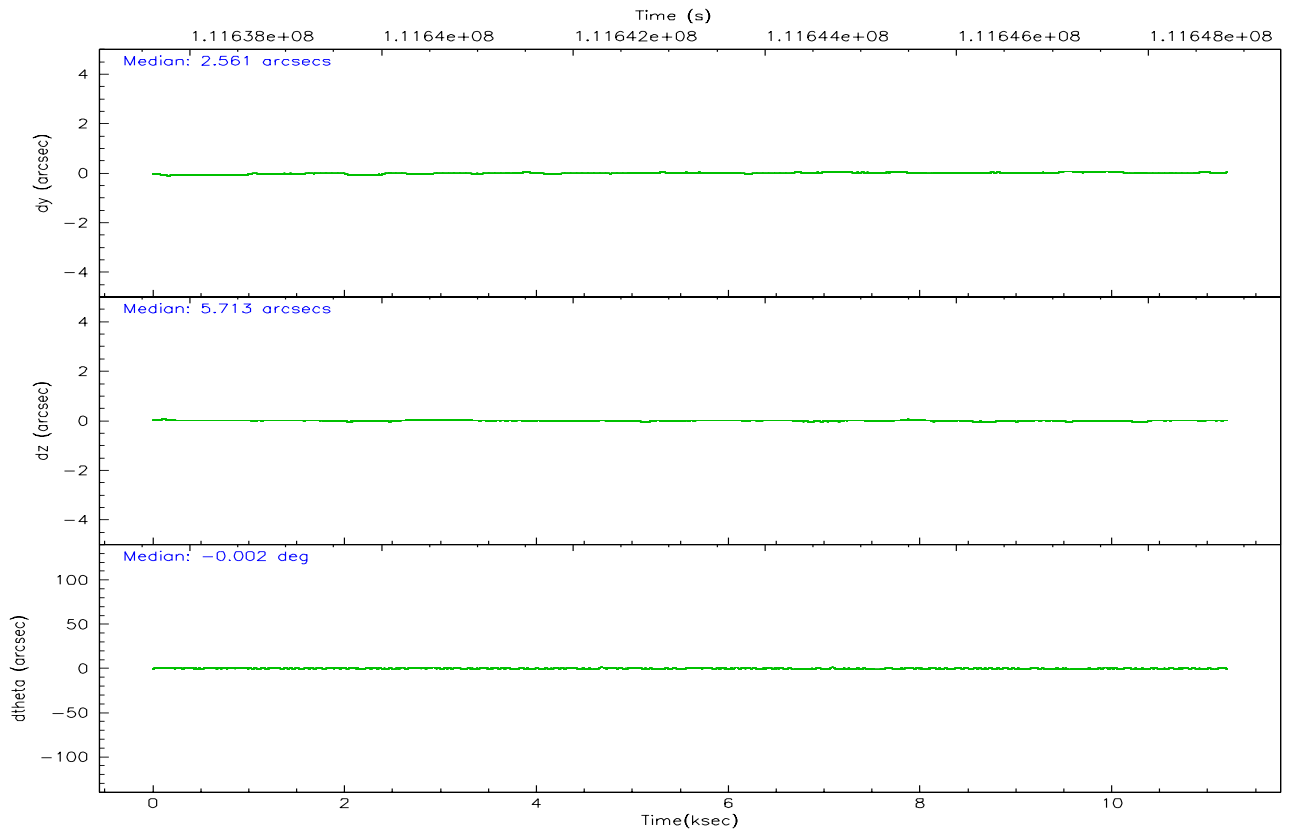
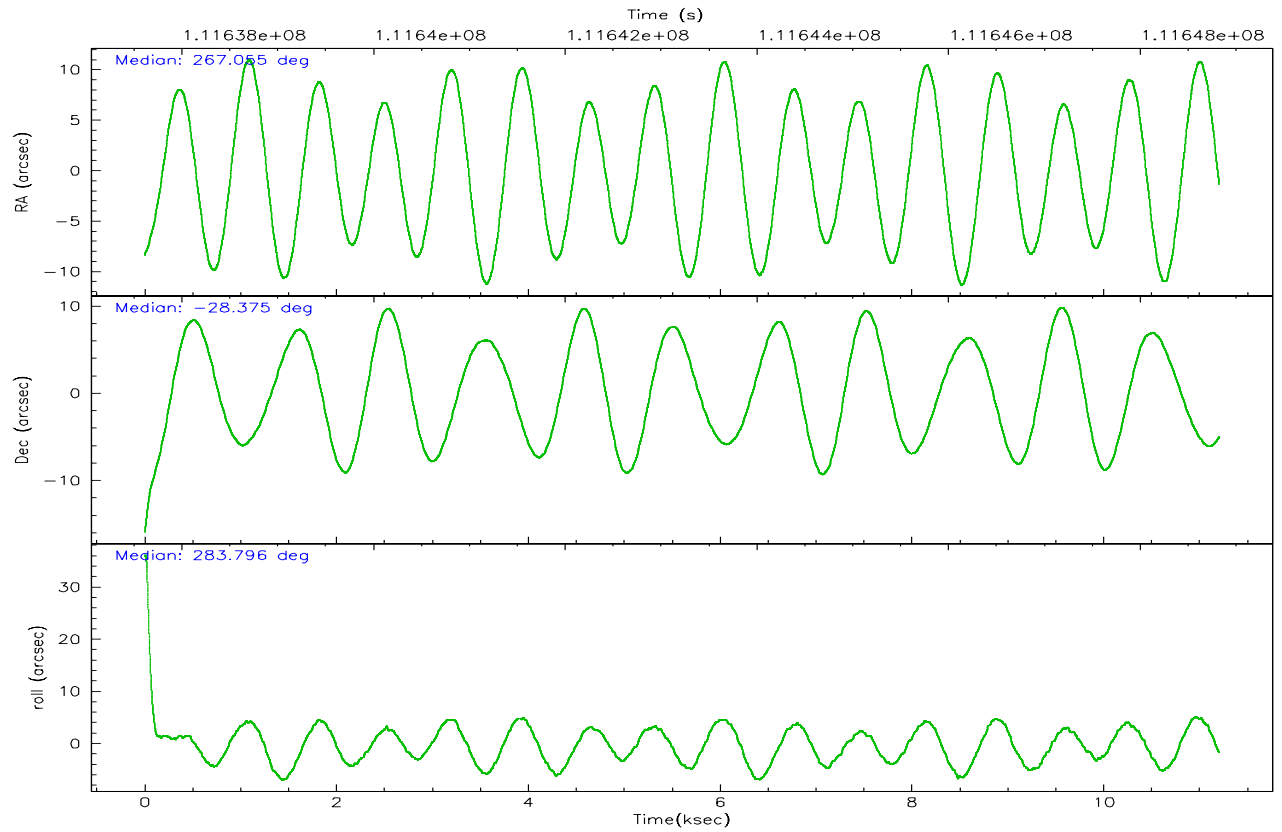
	ccd 0	ccd 1	ccd 2	ccd 3	ccd 6	ccd 7
grade 0 events	2520	2592	2306	2450	2186	1149
	9%	9%	7%	8%	7%	3%
grade 1 events	21	32	31	40	23	26
	0%	0%	0%	0%	0%	0%
grade 2 events	1082	1122	906	1109	999	4307
	4%	4%	3%	3%	3%	12%
grade 3 events	439	485	416	429	376	1030
	1%	1%	1%	1%	1%	2%
grade 4 events	469	520	360	445	387	1019
	1%	1%	1%	1%	1%	2%
grade 5 events	1101	1192	1011	1264	1367	3225
	4%	4%	3%	4%	4%	9%
grade 6 events	844	1072	727	870	863	10031
	3%	3%	2%	3%	2%	28%
grade 7 events	19492	20073	23353	21482	22983	14574
	75%	74%	80%	76%	78%	41%

2.2 Compared Parameters

Parameter	Planned	Actual	Parameter	Planned	Actual
Instrument	ACIS	ACIS	Obspar format version number	6	6
Detector	ACIS-012367	ACIS-012367	Obspar file type	PREDICTED	ACTUAL
Grating	NONE	NONE	Obspar update status	NONE	UPDATED
Data mode	FAINT	FAINT	Number of optional ACIS chips dropped	0	0
Observation mode	POINTING	POINTING	On-chip summing requested	N	N
Pointing RA	267.033535	267.0551774945037	Subarray requested	NONE	NONE
Pointing Dec	-28.355391	-28.3752088490401	Alternating exposures requested	N	N
Pointing Roll	283.588331	283.8073463904689	Primary exposure time	0.000000	3.2
Roll angle	283.600000	283.600000			
Roll tolerance	2.000000	2.000000			
Roll constraint allows 180D rotation	N	N			
SIM focus pos (mm)	-0.782348	-0.7809083437167272			
SIM defocus (mm)	0	0.001439871863259334			
SIM translation stage pos (mm)	-233.592463	-233.5874344608287			
SIM translation stage offset (mm)	0	-0.005018542100998502			
Observation start time	111638022.184000	111636950.79517			
Observation start date	2001-07-16T02:32:38	2001-07-16T02:15:50			
Observation end time	111648822.184000	111648955.59564			
Observation end date	2001-07-16T05:32:38	2001-07-16T05:35:55			
Read mode	TIMED	TIMED			

2.3 Aspect



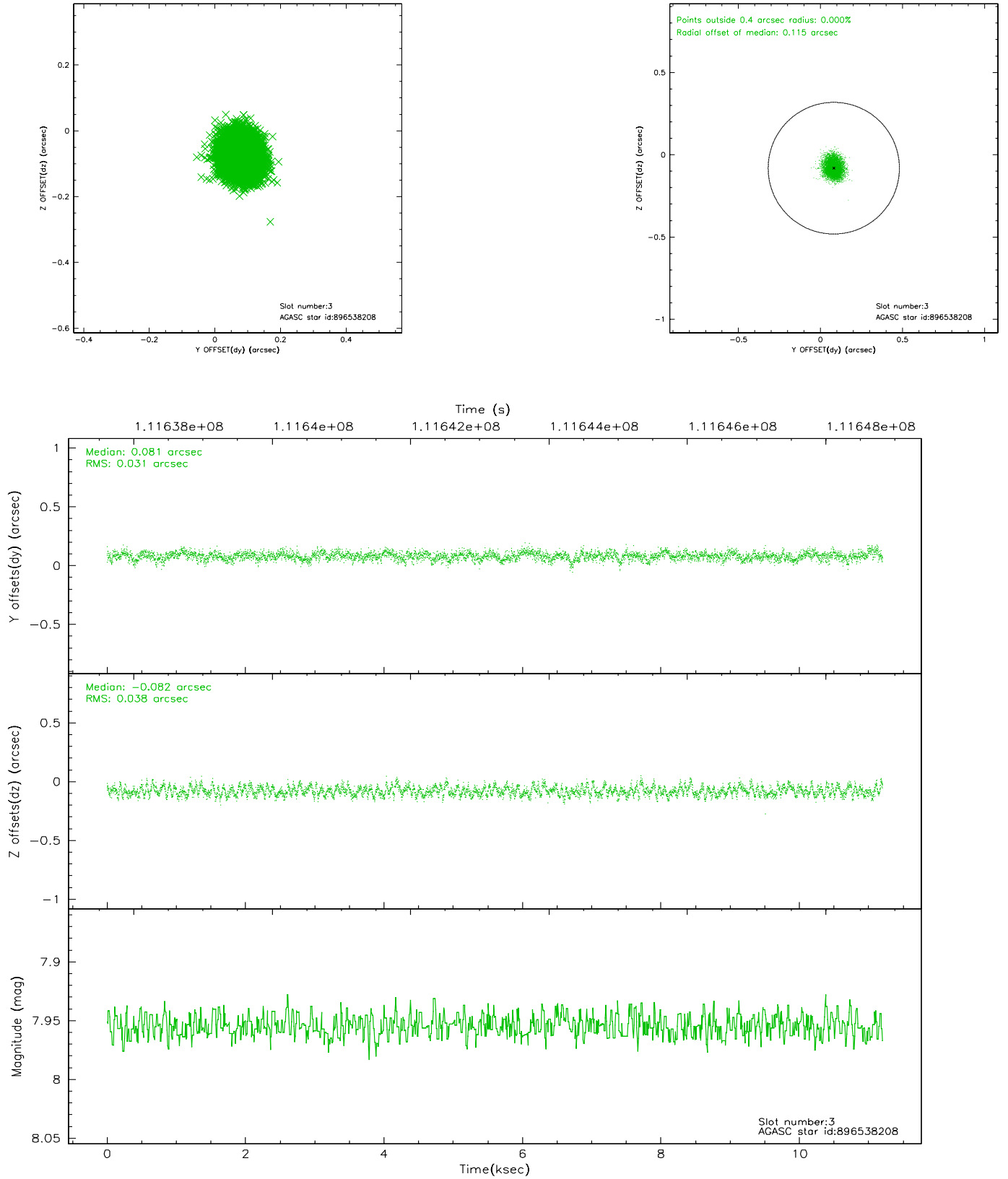


Slot Statistics

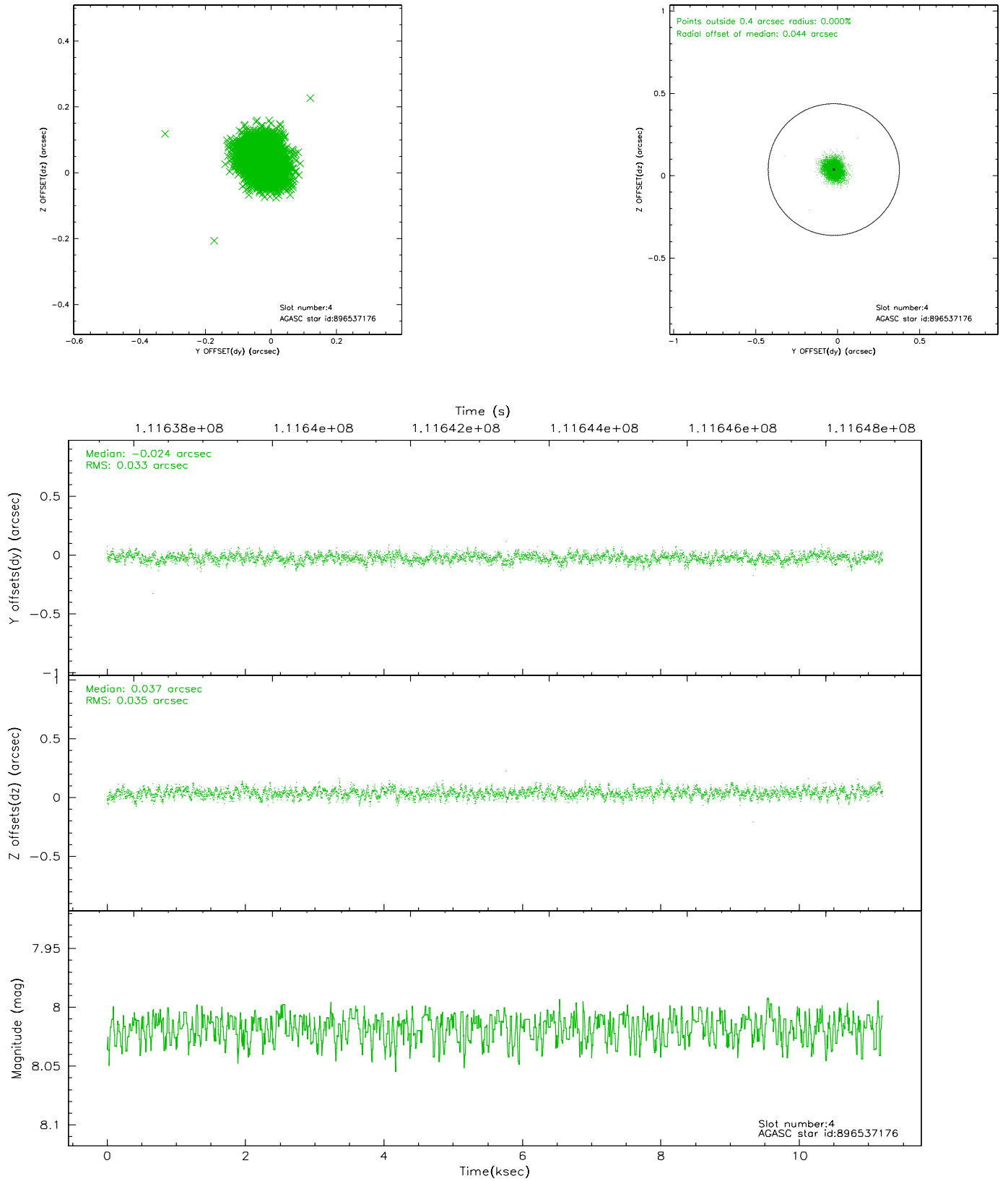
slot	status	id	mag	n_pts	med_dy	med_dz	dr1	dr2	ra	dec	mean_y	mean_z
0	FID	ACIS-I-1	7.25	2733	-0.048	0.060	0.006	0.010	0.000000	0.000000	937.20	-829.01
1	FID	ACIS-I-5	7.24	2733	0.004	0.023	0.006	0.010	0.000000	0.000000	-1810.60	1068.22
2	FID	ACIS-I-6	7.26	2733	-0.047	-0.012	0.006	0.011	0.000000	0.000000	402.26	1713.20
3	GUIDE	896538208	7.95	5465	0.081	-0.082	0.053	0.084	267.176969	-28.671626	1214.02	173.38
4	GUIDE	896537176	8.02	5466	-0.024	0.037	0.052	0.083	266.498272	-28.678259	737.55	-1916.63
5	GUIDE	896011040	7.68	5465	-0.065	-0.038	0.055	0.086	267.058469	-28.014759	-1172.64	364.89
6	GUIDE	896535464	9.32	5461	0.053	0.025	0.083	0.135	266.962550	-28.408631	134.13	-263.04
7	GUIDE	896532608	8.53	5464	-0.041	0.055	0.058	0.093	267.503801	-28.129741	-435.68	1641.67

2.4 Star Slots

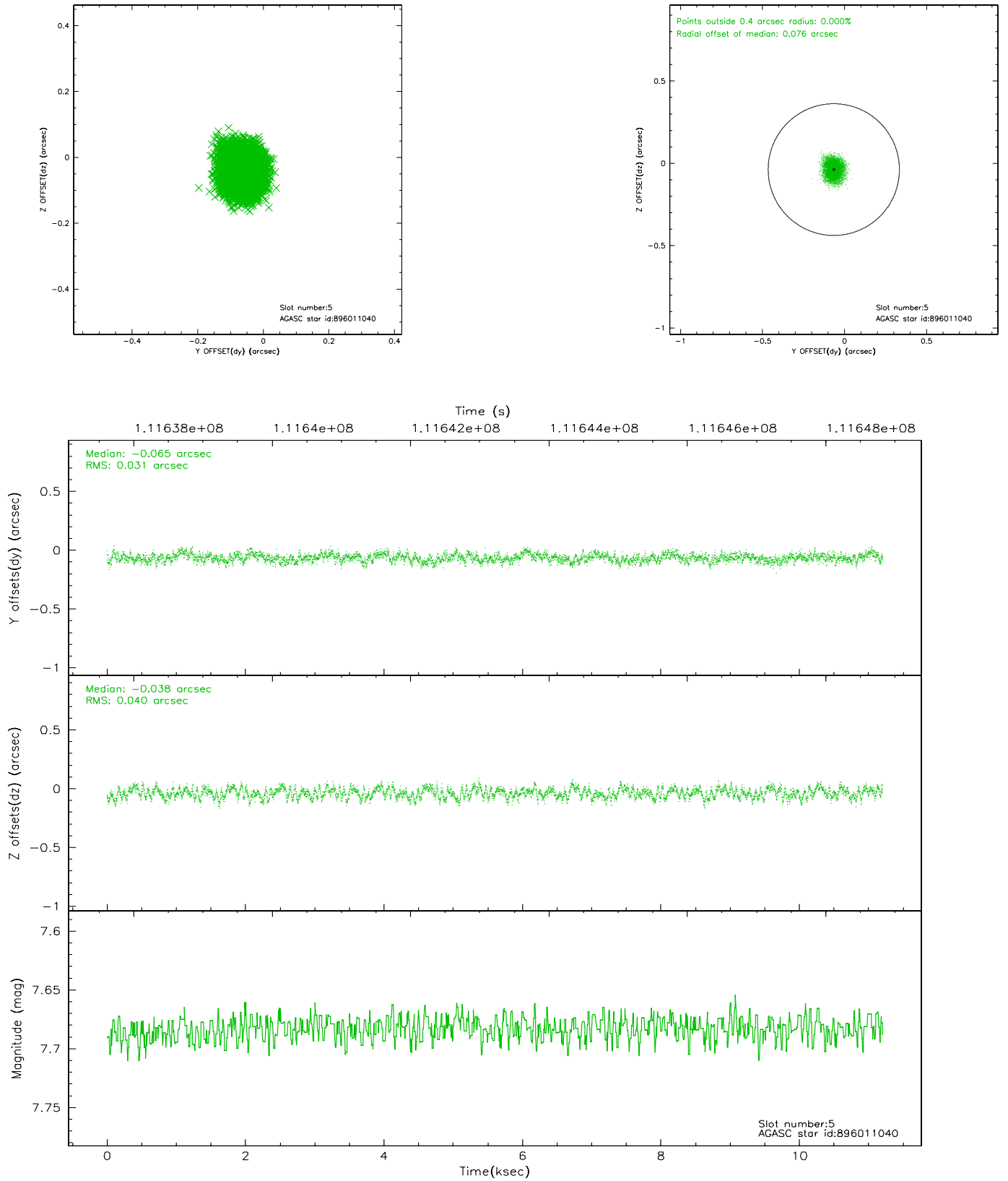
2.4.1 Slot 3



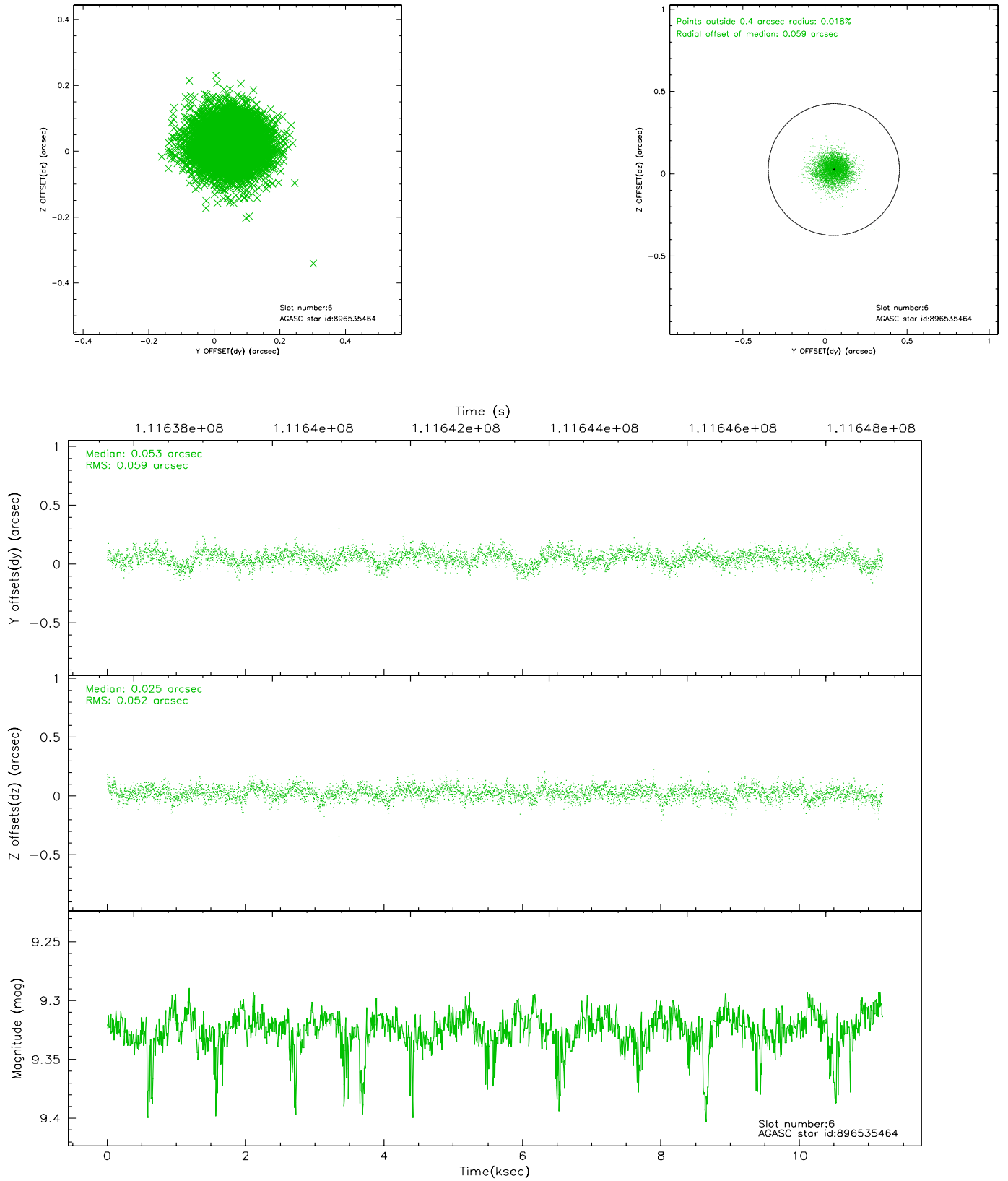
2.4.2 Slot 4



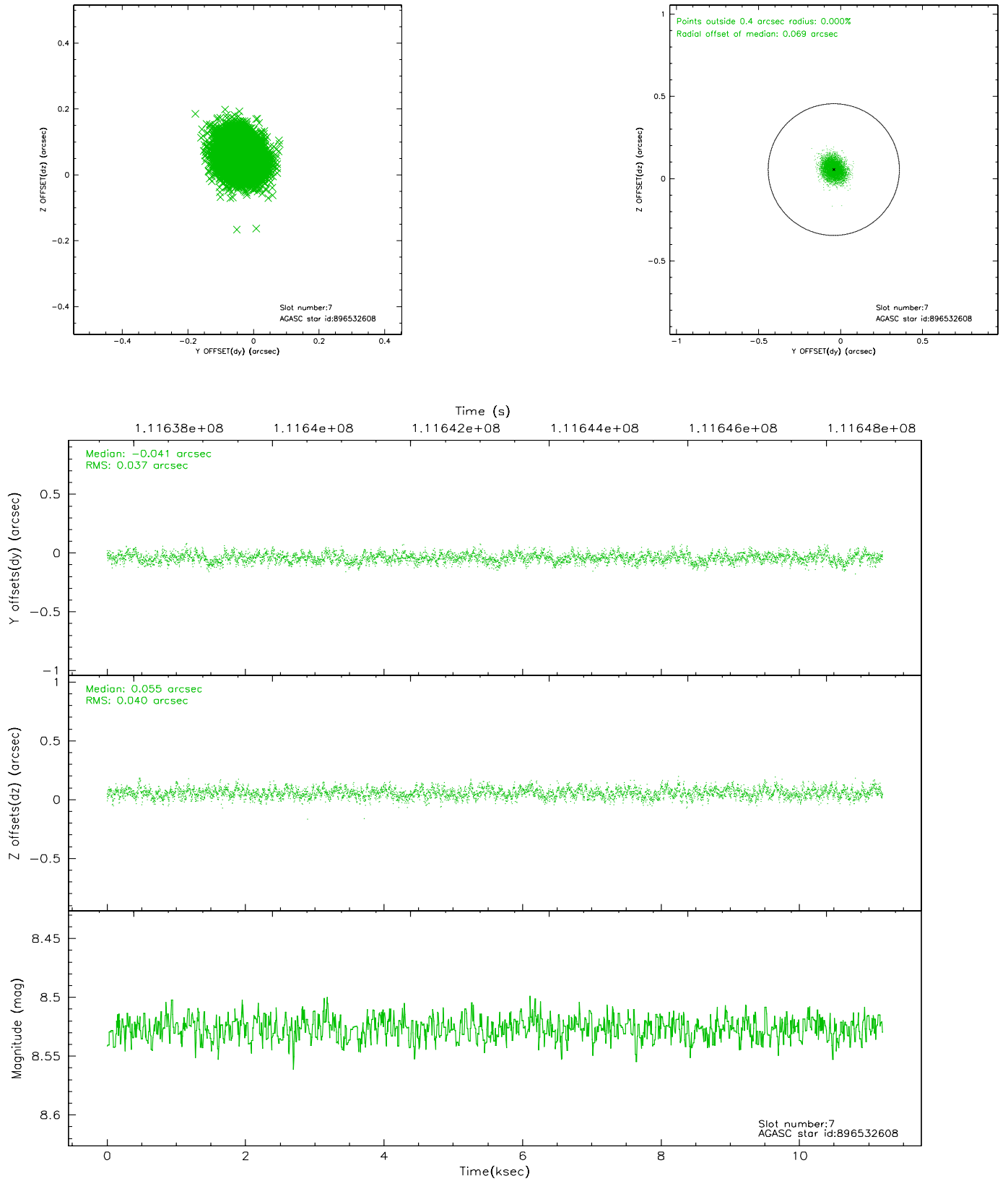
2.4.3 Slot 5



2.4.4 Slot 6

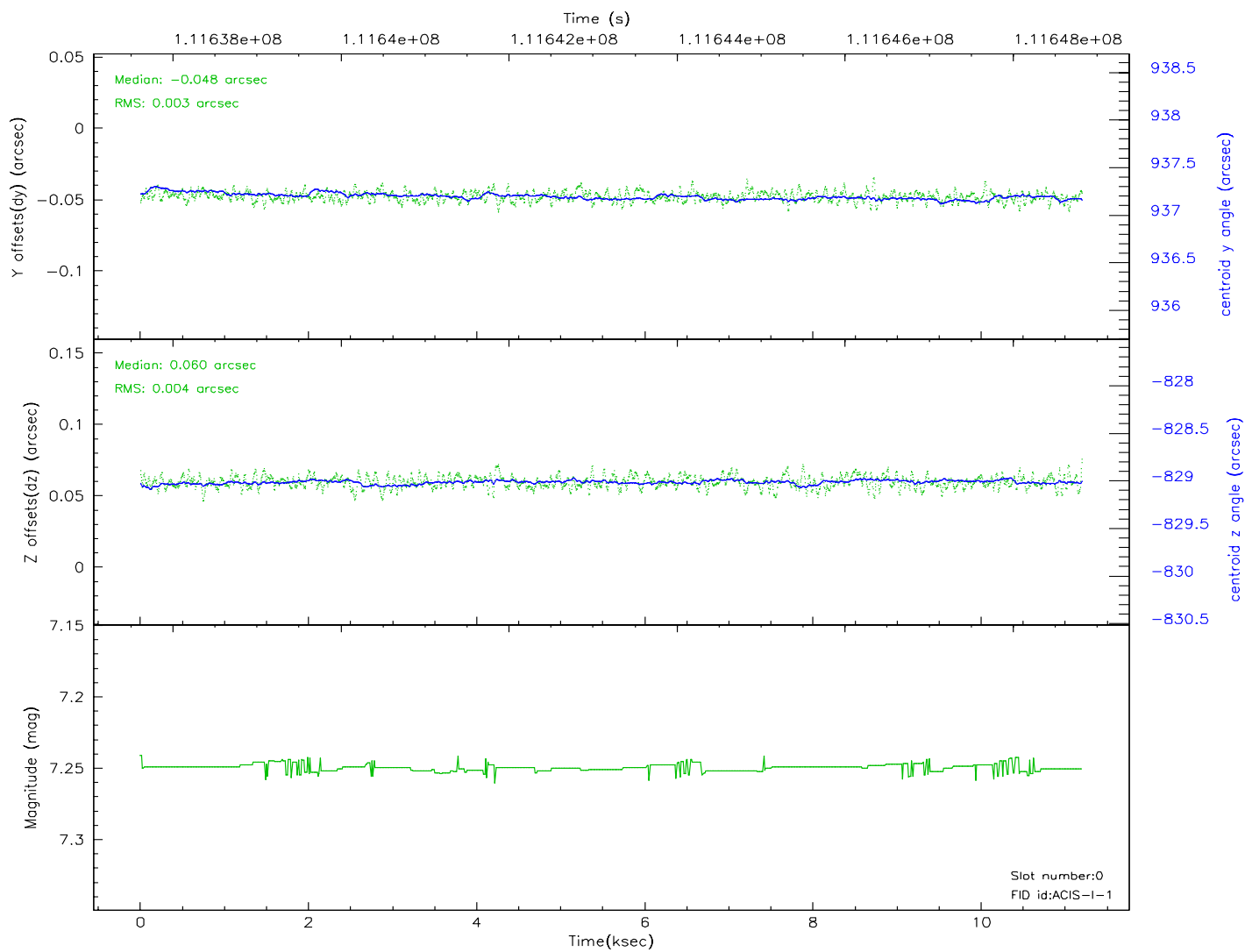
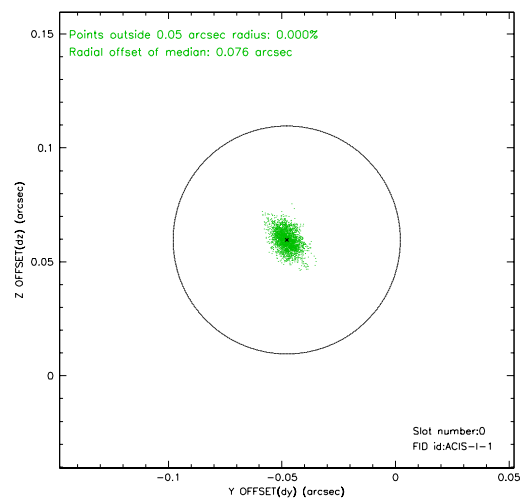
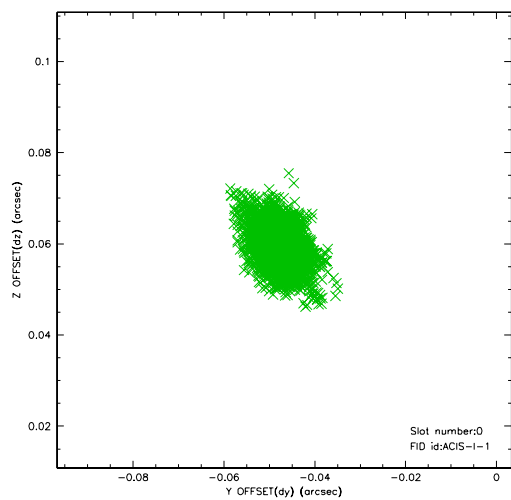


2.4.5 Slot 7

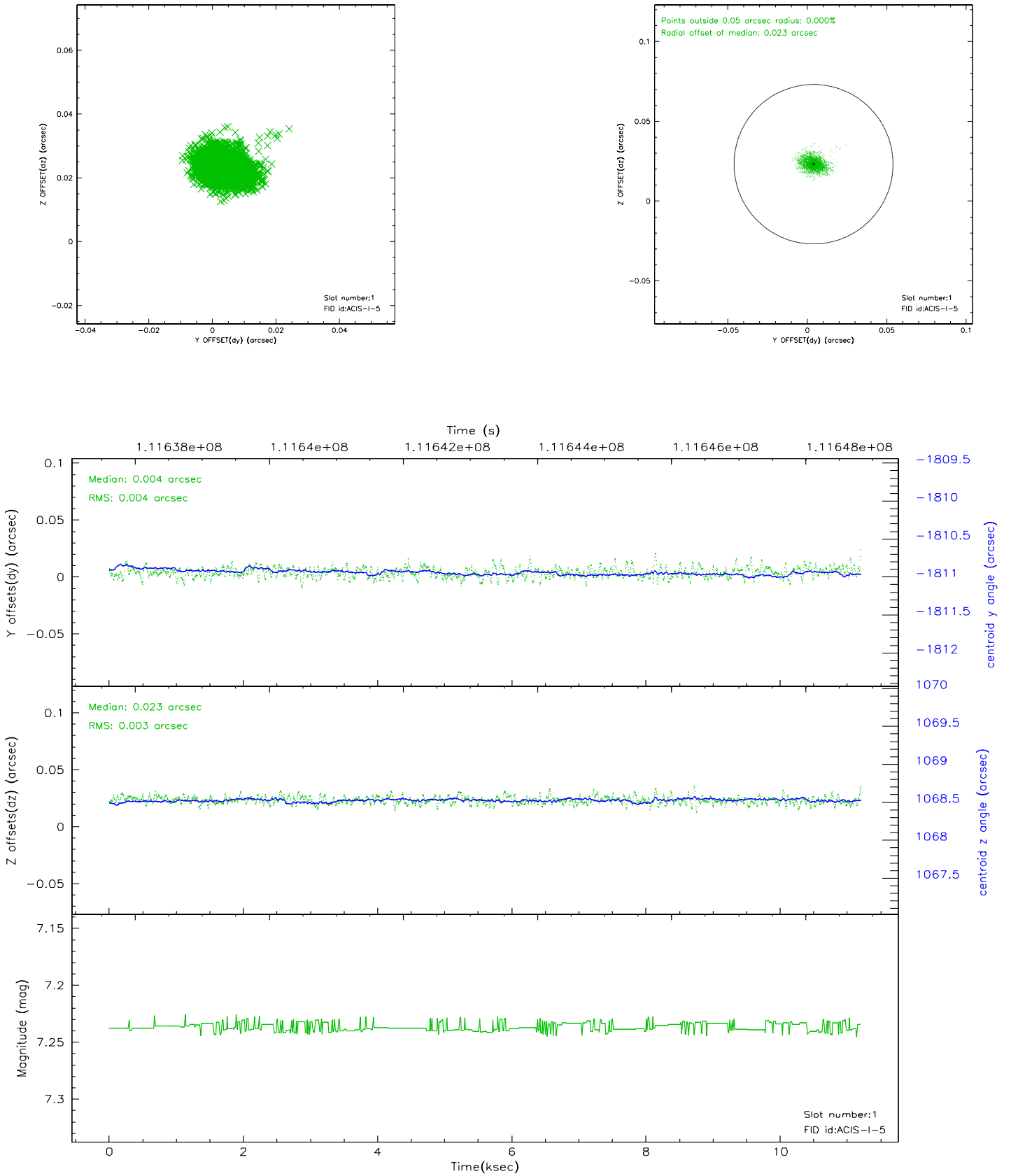


2.5 FID Slots

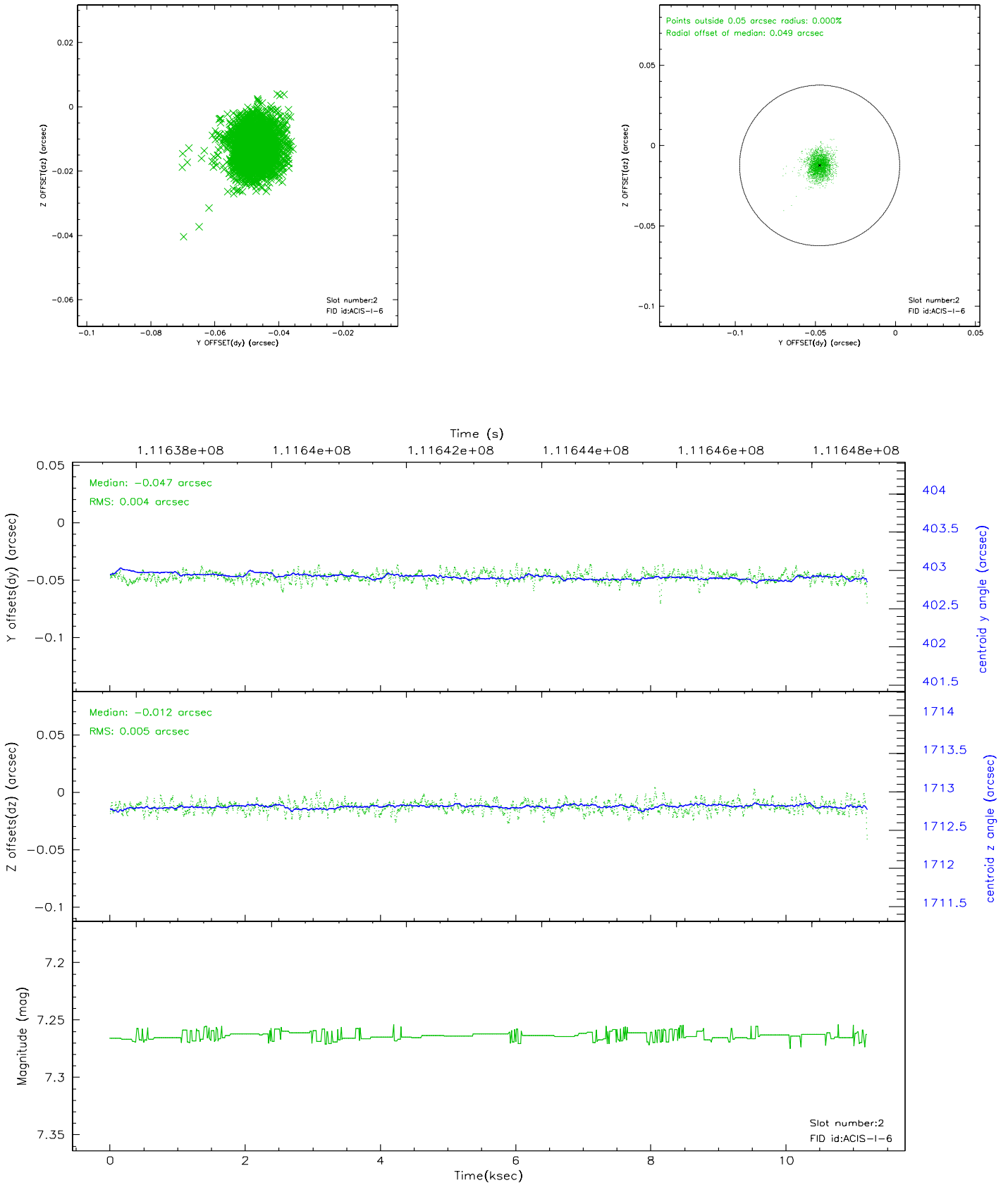
2.5.1 Slot 0



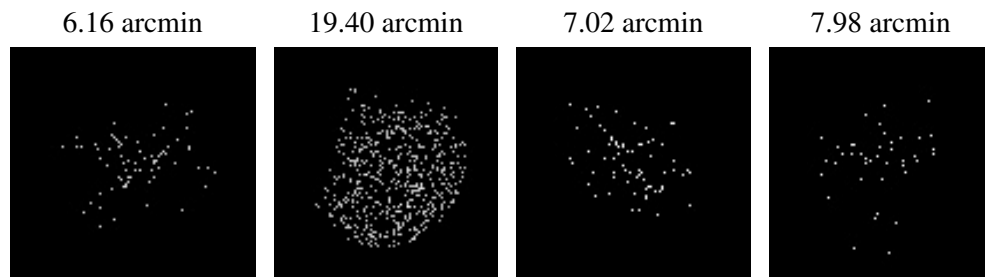
2.5.2 Slot 1



2.5.3 Slot 2



3 Point Sources



A Summary

A.1 Status

V&V Scientist	Jen Lauer
V&V Date (YYYY-MM-DD)	2006.12.14
V&V Edition	1
V&V Disposition and Status	OK
V&V Charge Time	10.8

A.2 Comments

Roll constraint met.