

V&V Reference Report

L2 ASCDS Version : 7.6.9

Observation 2268 - L2 Version 001
Chandra X-Ray Center

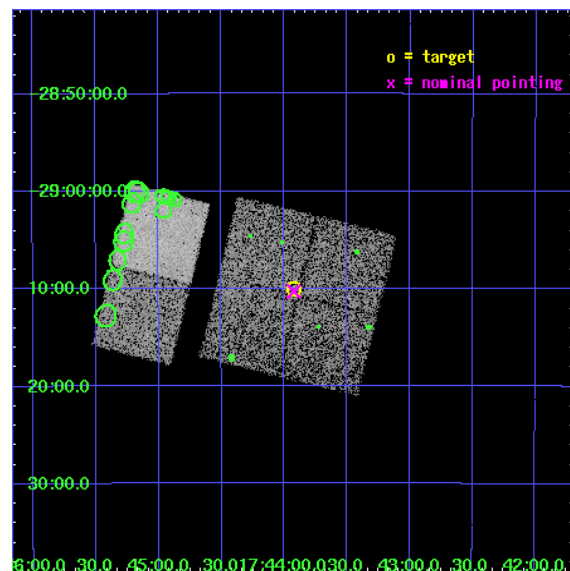
L2 Processing Date : Dec 14 2006

Contents

1	Front	2
2	OBI	3
2.1	OBI	3
2.1.1	Images	3
2.1.2	Bias	3
2.1.3	Parameters	4
2.1.4	Events	4
2.2	Compared Parameters	5
2.3	Aspect	6
2.4	Star Slots	9
2.4.1	Slot 3	9
2.4.2	Slot 4	10
2.4.3	Slot 5	11
2.4.4	Slot 6	12
2.4.5	Slot 7	13
2.5	FID Slots	14
2.5.1	Slot 0	14
2.5.2	Slot 1	15
2.5.3	Slot 2	16
3	Point Sources	17
A	Summary	18
A.1	Status	18
A.2	Comments	18

1 Front

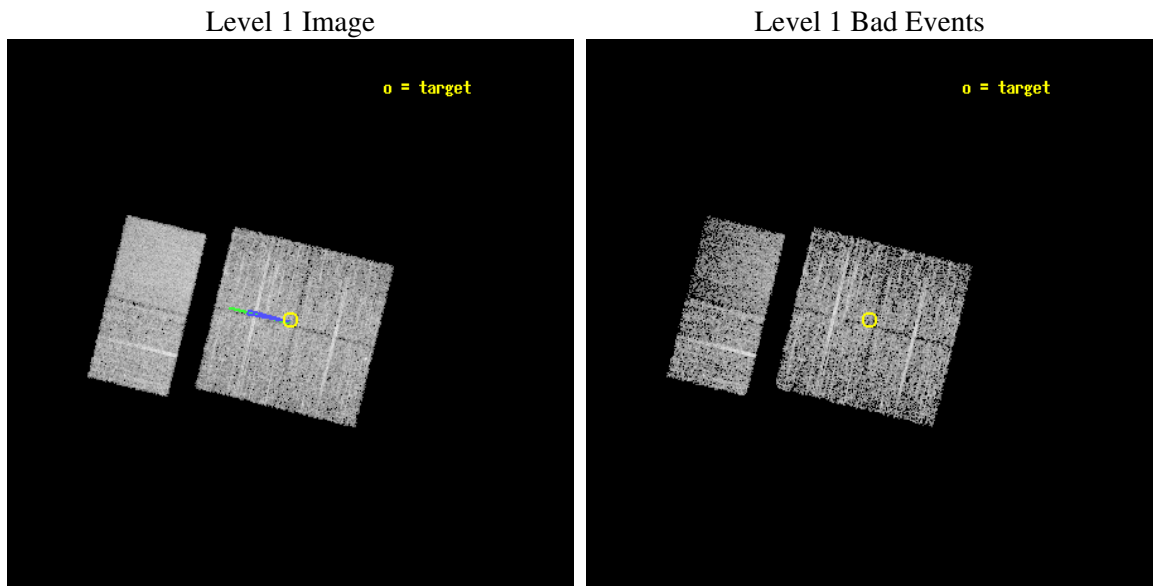
seq_num	900095
obs_id	2268
title	CHANDRA SURVEY OF THE GALACTIC RIDGE AROUND THE MILKY WAY CENTER
observer	Prof. Q. Daniel Wang
object	GCS 21
dtcycle	0
cycle	P
ra_targ	265.9817
dec_targ	-29.1668
ra_nom	265.9808746792
dec_nom	-29.171484738941
roll_nom	283.80719238602
revision	2
ontime	10950.400010198
livetime	10811.73945173
ontime0	10950.400010198
ontime1	10947.159039959
ontime2	10950.400010198
ontime3	10950.400010198
ontime6	10950.400010198
ontime7	10950.400010198
l2events	50893



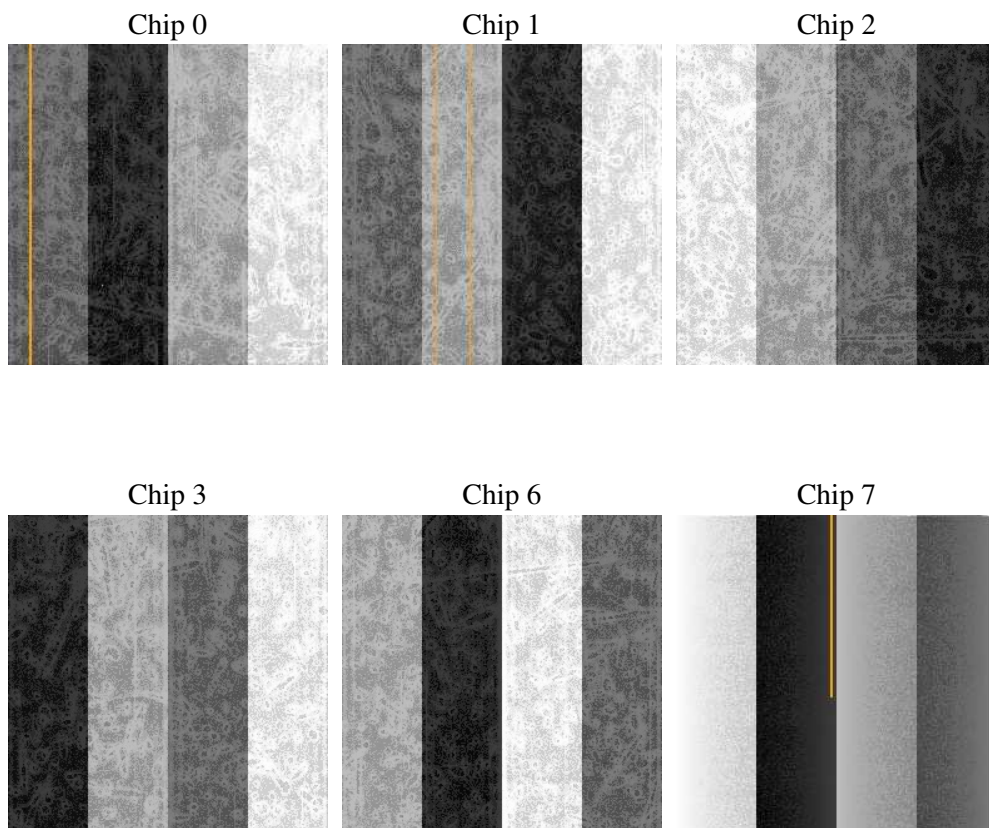
2 OBI

2.1 OBI

2.1.1 Images



2.1.2 Bias



2.1.3 Parameters

obi_num	0
ascdsver	7.6.9
caldbver	3.2.4
date	2006-12-14T14:19:42
revision	2

sched_exp_time	11000.000000
ontime	10954.589848995
ontime0	10954.589848995
ontime1	10951.348878756
ontime2	10954.589848995
ontime3	10954.589848995
ontime6	10954.589848995
ontime7	10954.589848995
l1events	189681

2.1.4 Events

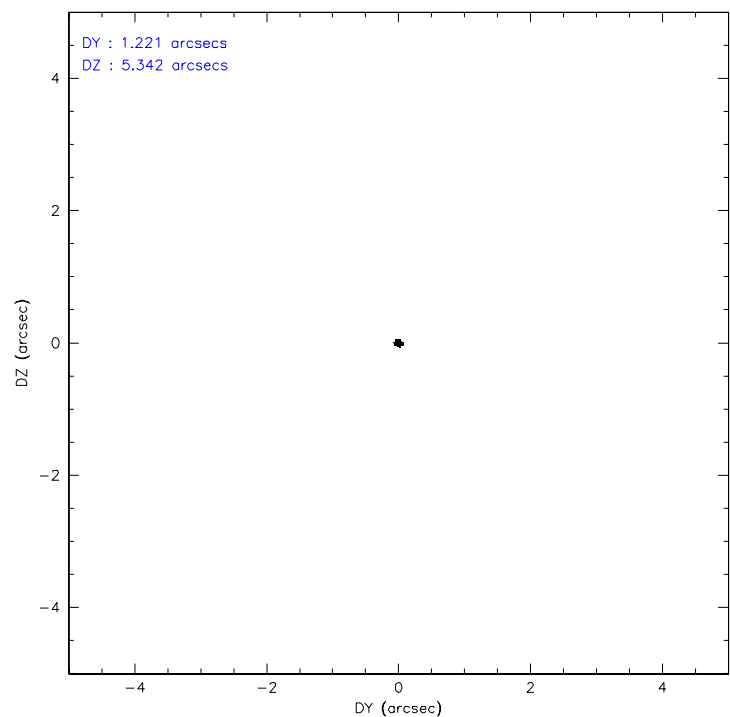
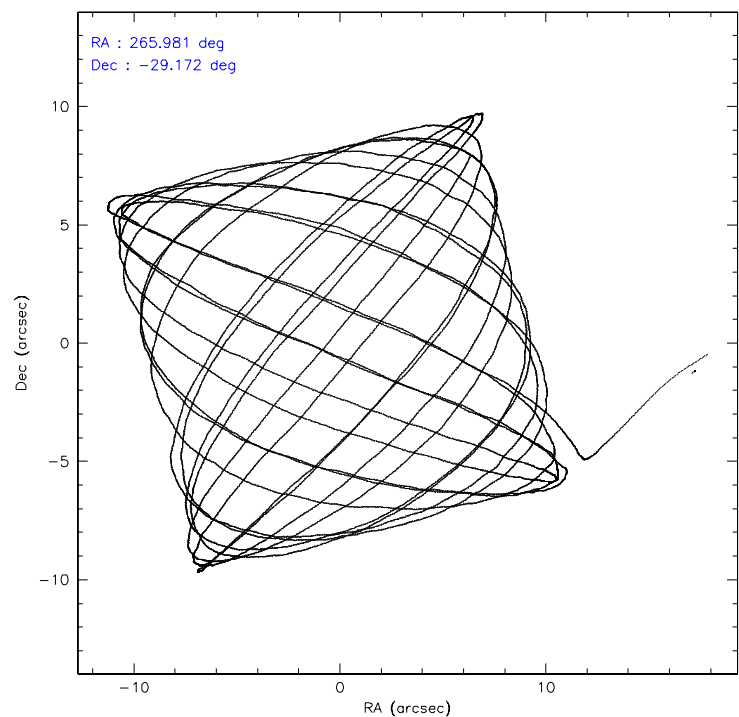
	ccd 0	ccd 1	ccd 2	ccd 3	ccd 6	ccd 7
level 1 events	27732	27474	29840	30499	33682	40454
rejected events	22373	21536	23915	23946	25745	18245
rejected %	80%	78%	80%	78%	76%	45%

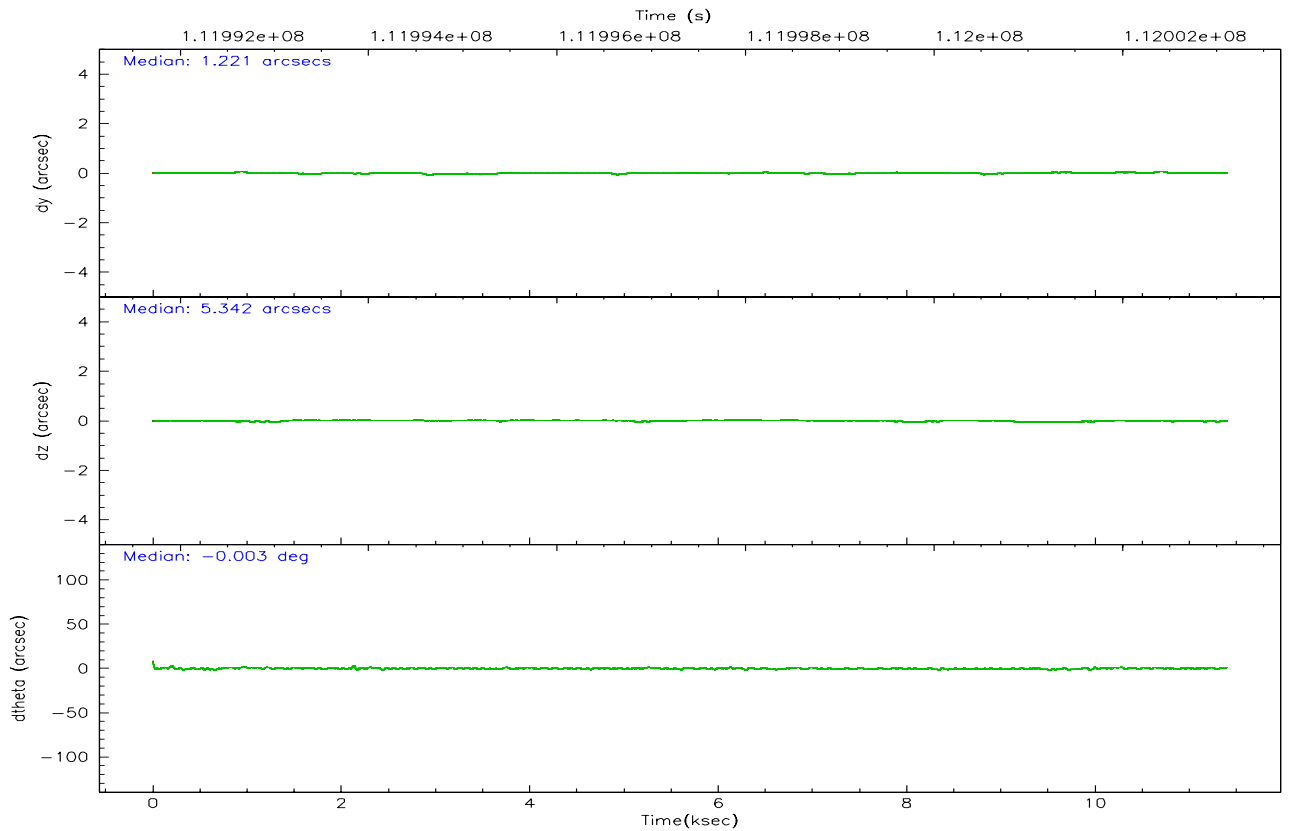
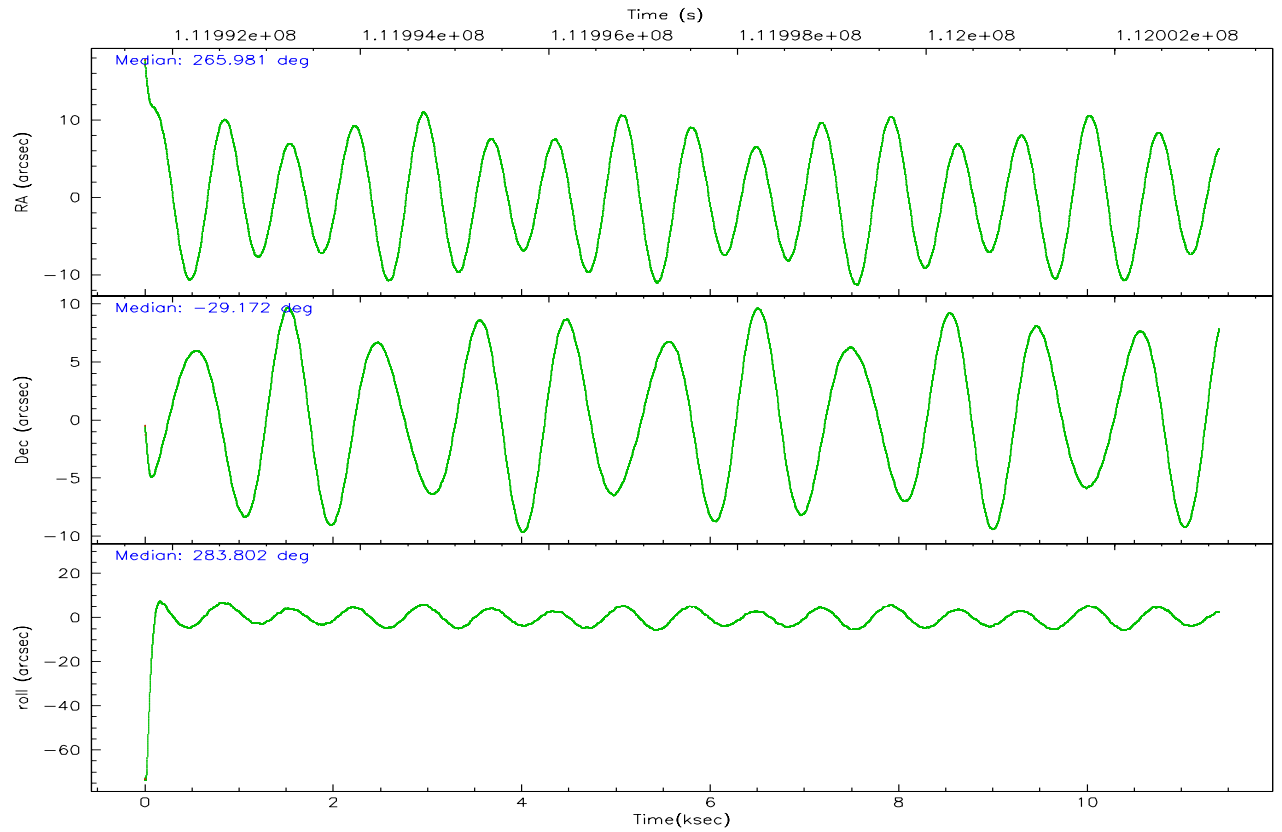
	ccd 0	ccd 1	ccd 2	ccd 3	ccd 6	ccd 7
grade 0 events	2602	2900	3131	3523	4309	1703
	9%	10%	10%	11%	12%	4%
grade 1 events	24	23	27	32	26	27
	0%	0%	0%	0%	0%	0%
grade 2 events	1021	1094	1059	1193	1413	5751
	3%	3%	3%	3%	4%	14%
grade 3 events	443	487	443	482	518	1298
	1%	1%	1%	1%	1%	3%
grade 4 events	425	507	450	470	581	1272
	1%	1%	1%	1%	1%	3%
grade 5 events	1102	1206	1037	1296	1372	3064
	3%	4%	3%	4%	4%	7%
grade 6 events	870	950	843	886	1118	12192
	3%	3%	2%	2%	3%	30%
grade 7 events	21245	20307	22850	22617	24345	15147
	76%	73%	76%	74%	72%	37%

2.2 Compared Parameters

Parameter	Planned	Actual	Parameter	Planned	Actual
Instrument	ACIS	ACIS	Obspar format version number	6	6
Detector	ACIS-012367	ACIS-012367	Obspar file type	PREDICTED	ACTUAL
Grating	NONE	NONE	Obspar update status	NONE	UPDATED
Data mode	FAINT	FAINT	Number of optional ACIS chips dropped	0	0
Observation mode	POINTING	POINTING	On-chip summing requested	N	N
Pointing RA	265.959066	265.980874679196	Subarray requested	NONE	NONE
Pointing Dec	-29.151693	-29.17148473894142	Alternating exposures requested	N	N
Pointing Roll	283.587976	283.807192386023	Primary exposure time	0.000000	3.2
Roll angle	283.600000	283.600000			
Roll tolerance	2.000000	2.000000			
Roll constraint allows 180D rotation	N	N			
SIM focus pos (mm)	-0.782348	-0.7809083437167272			
SIM defocus (mm)	0	0.001439871863259334			
SIM translation stage pos (mm)	-233.592463	-233.5874344608287			
SIM translation stage offset (mm)	0	-0.005018542100998502			
Observation start time	111992116.184000	111991031.93401			
Observation start date	2001-07-20T04:54:12	2001-07-20T04:37:11			
Observation end time	112003116.184000	112003249.93449			
Observation end date	2001-07-20T07:57:32	2001-07-20T08:00:49			
Read mode	TIMED	TIMED			

2.3 Aspect



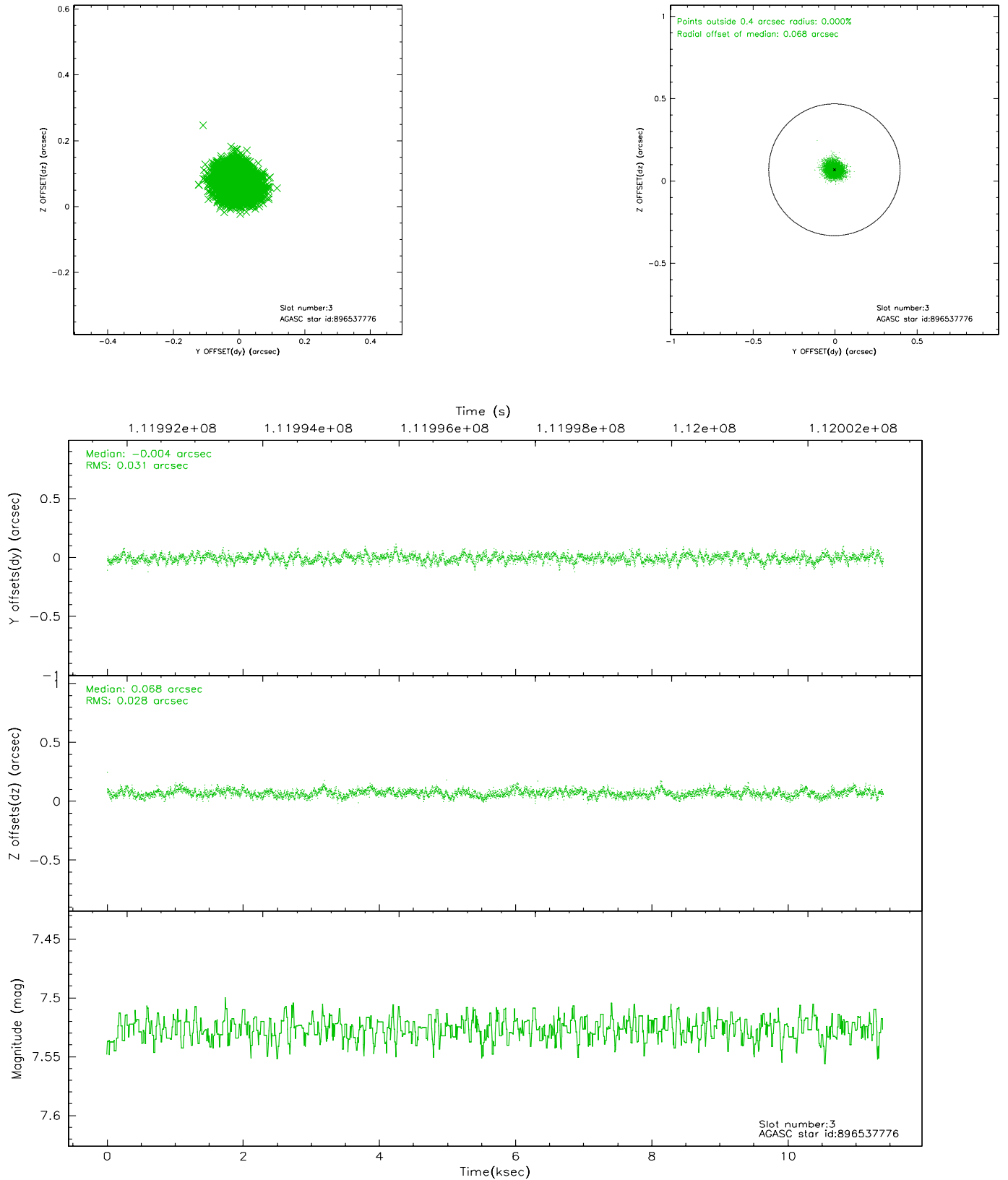


Slot Statistics

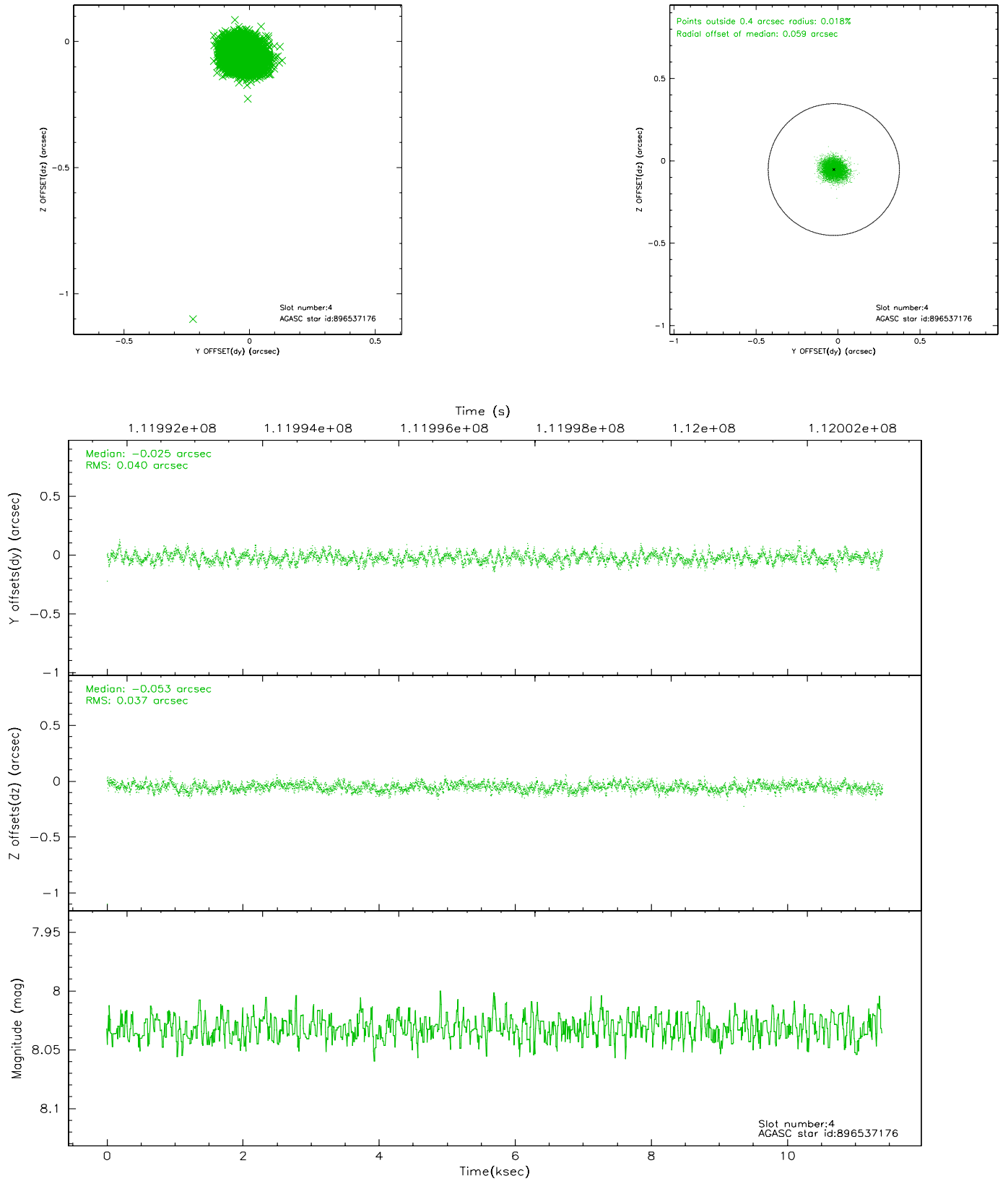
slot	status	id	mag	n_pts	med_dy	med_dz	dr1	dr2	ra	dec	mean_y	mean_z
0	FID	ACIS-I-2	7.15	2781	-0.013	-0.024	0.009	0.015	0.000000	0.000000	-755.55	-835.09
1	FID	ACIS-I-4	7.18	2781	-0.079	0.024	0.005	0.010	0.000000	0.000000	2158.22	1070.94
2	FID	ACIS-I-5	7.23	2781	-0.009	0.069	0.009	0.014	0.000000	0.000000	-1808.82	1069.30
3	GUIDE	896537776	7.53	5562	-0.004	0.068	0.045	0.073	266.655684	-29.665673	2315.58	1682.64
4	GUIDE	896537176	8.03	5561	-0.025	-0.053	0.056	0.090	266.498272	-28.678259	-1253.74	2055.38
5	GUIDE	896402976	7.50	5562	-0.163	-0.012	0.059	0.101	265.099474	-28.923203	-1427.60	-2441.25
6	GUIDE	896536320	8.96	5559	0.069	0.034	0.064	0.105	266.369048	-29.307026	846.70	1119.15
7	GUIDE	896403224	8.26	5559	0.121	-0.030	0.053	0.086	265.612825	-29.438915	750.92	-1297.84

2.4 Star Slots

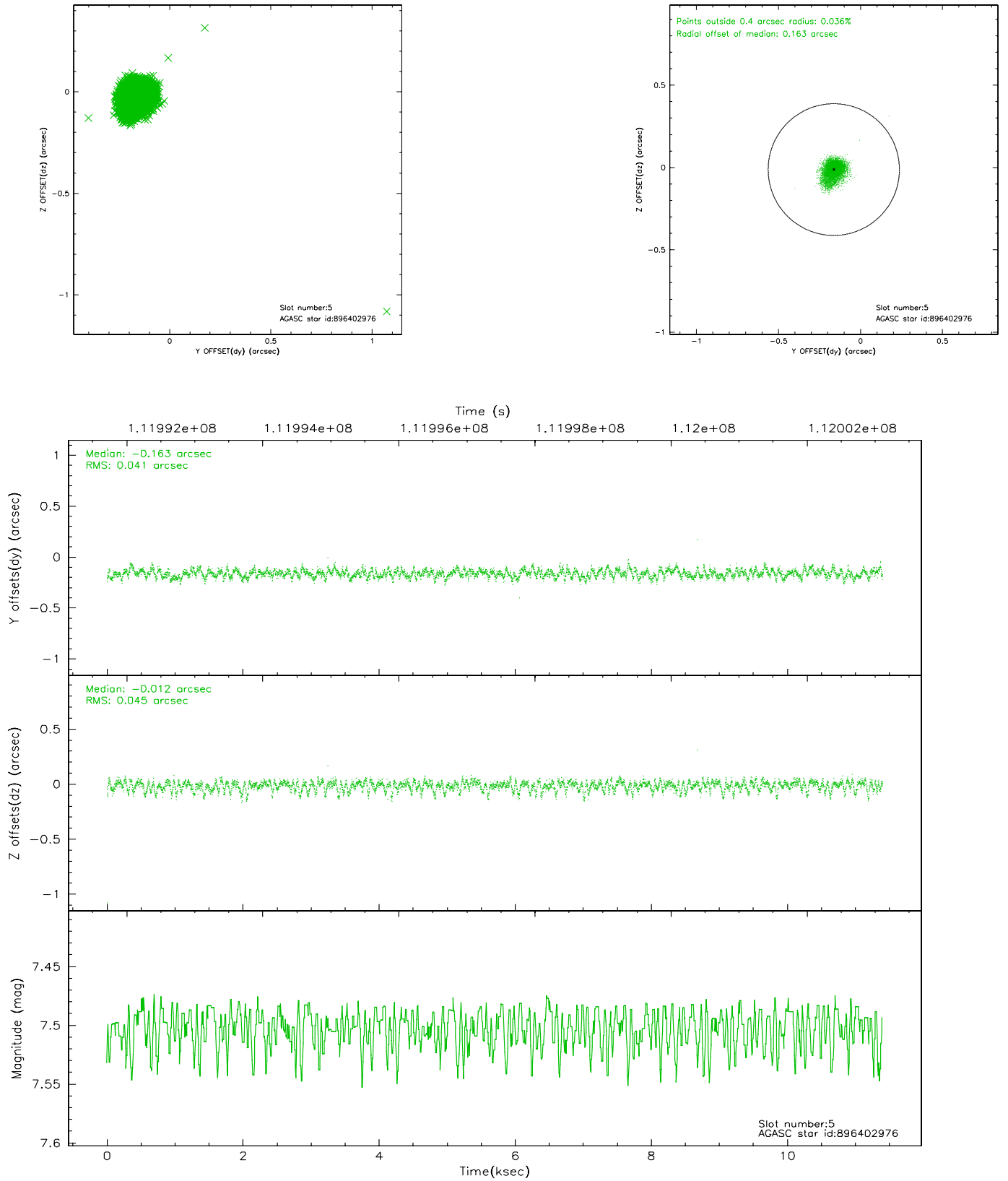
2.4.1 Slot 3



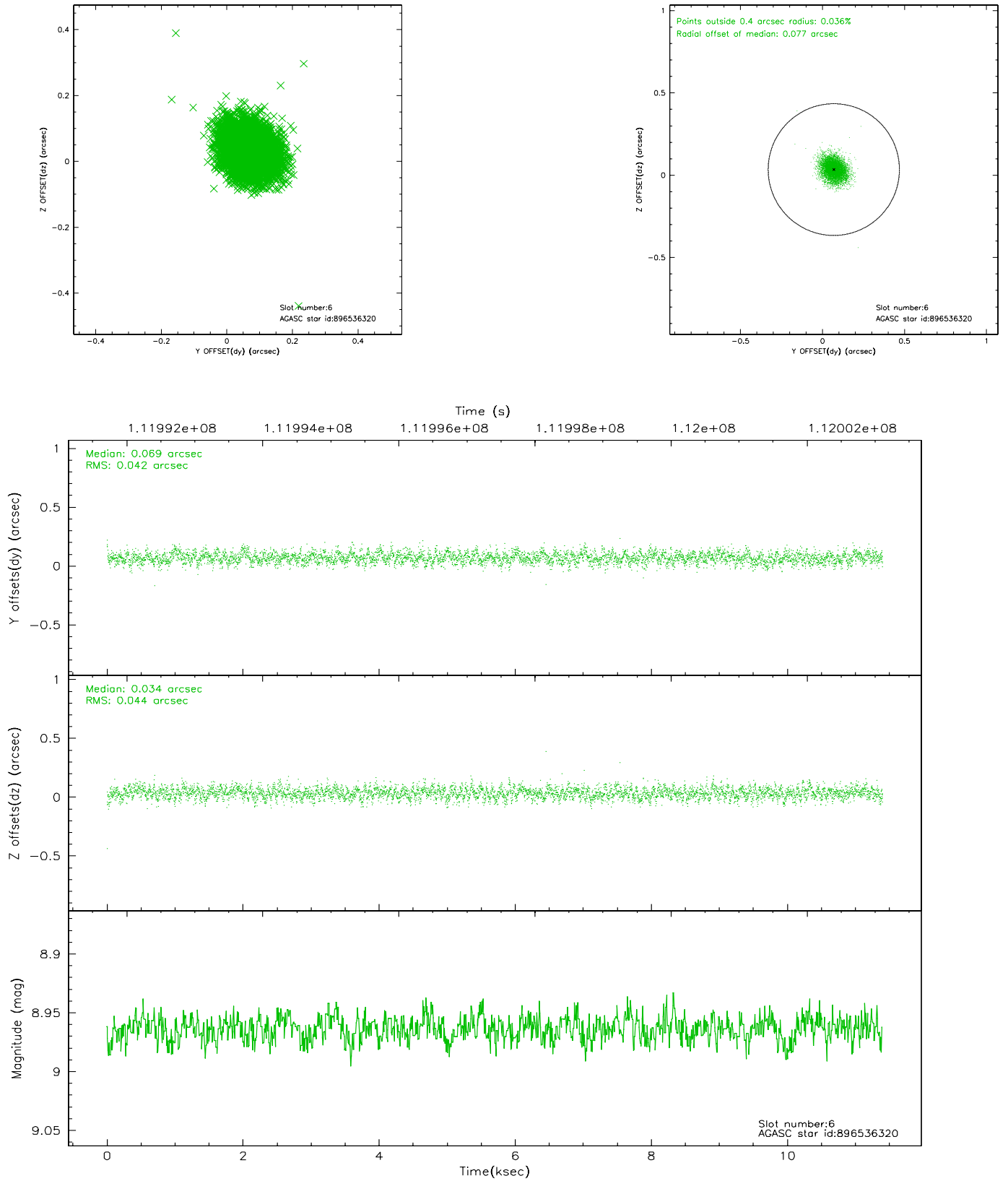
2.4.2 Slot 4



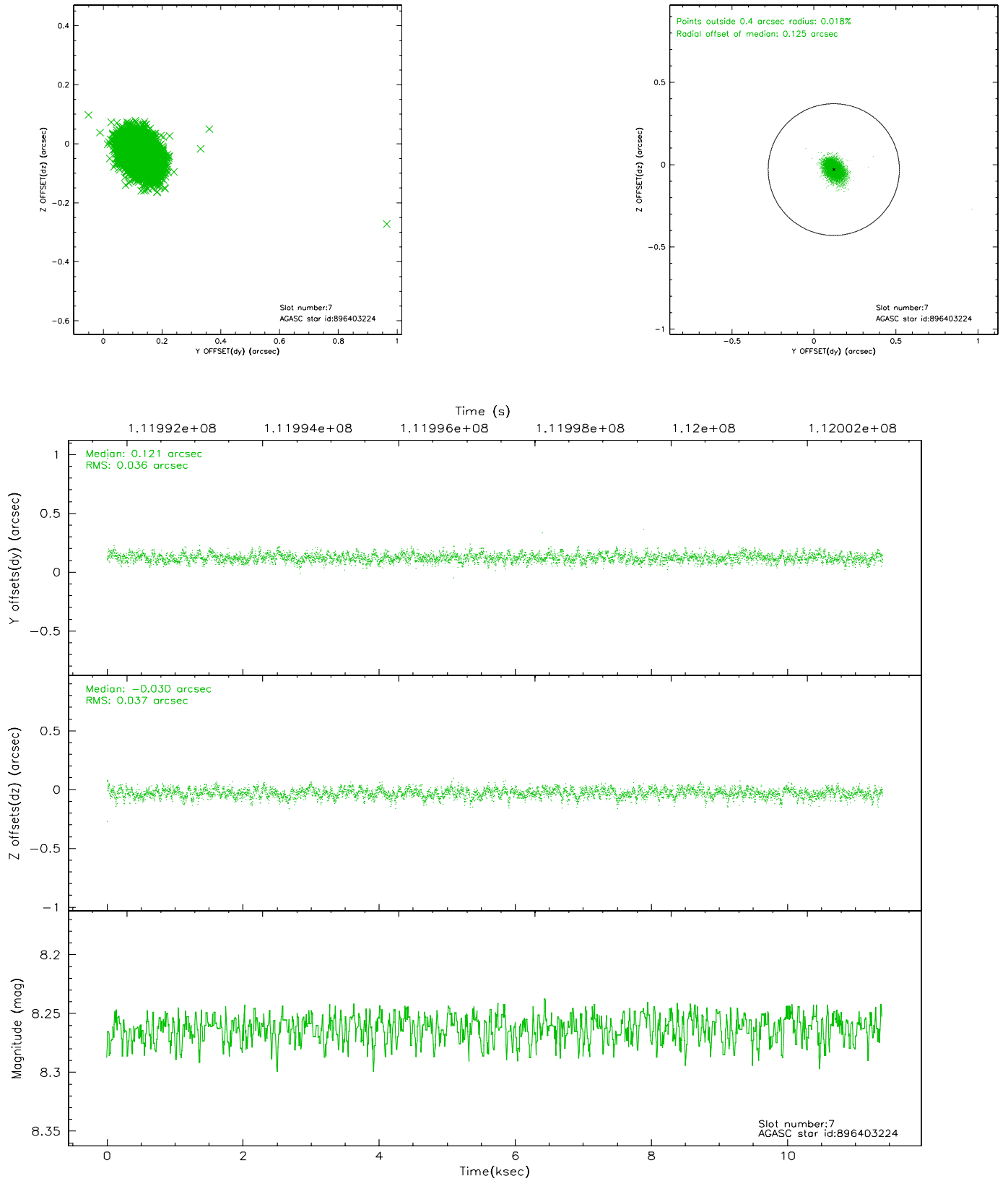
2.4.3 Slot 5



2.4.4 Slot 6

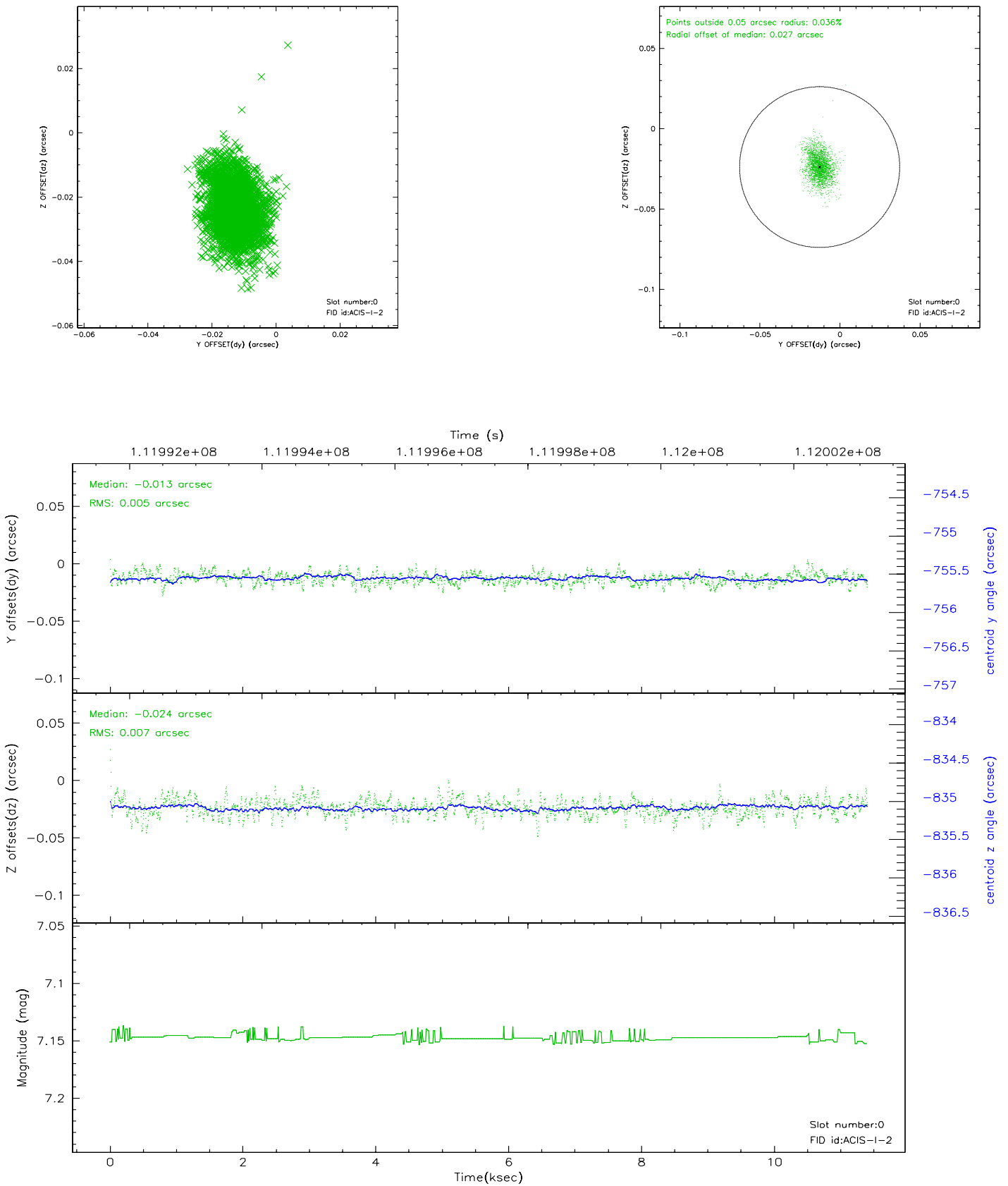


2.4.5 Slot 7

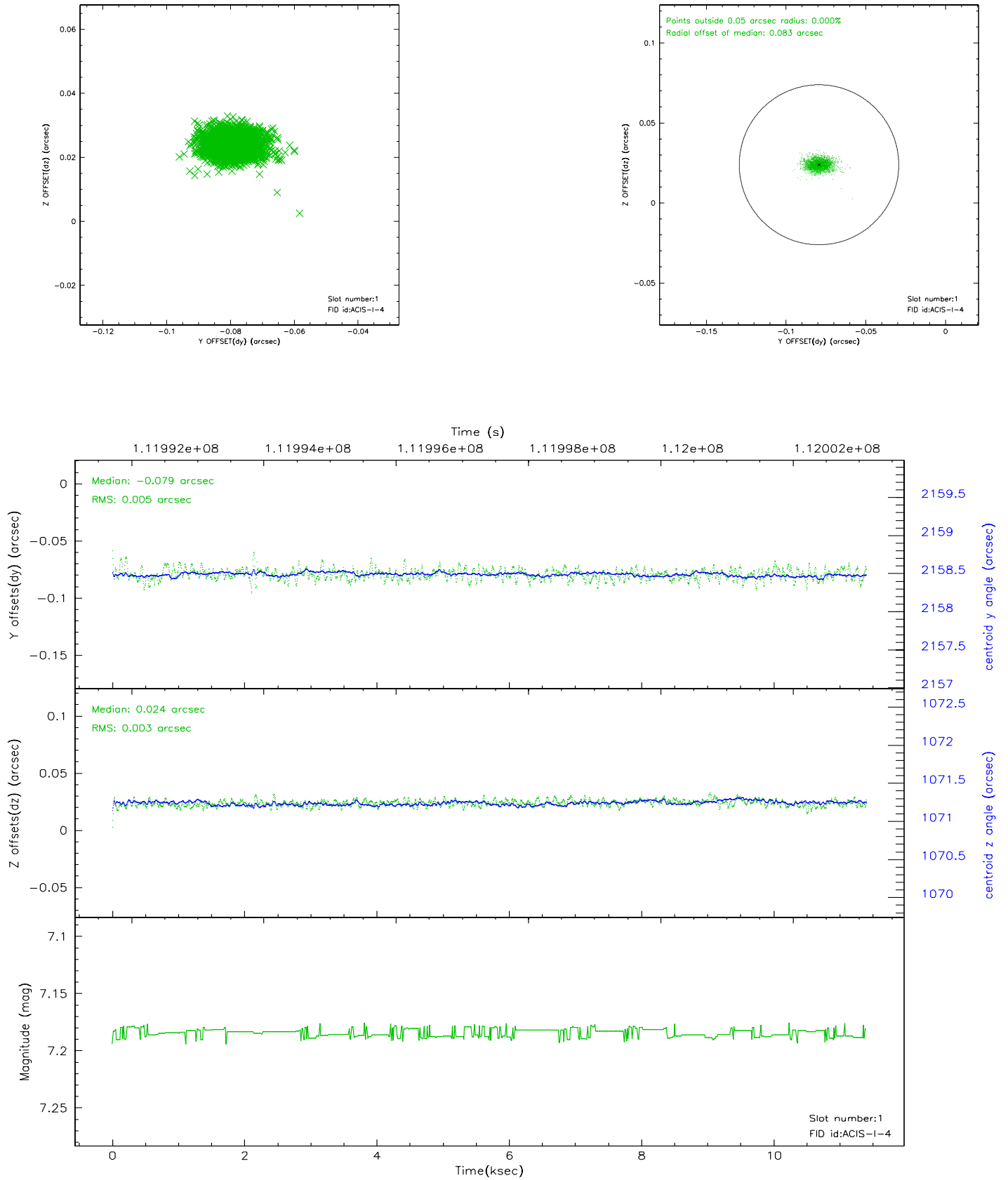


2.5 FID Slots

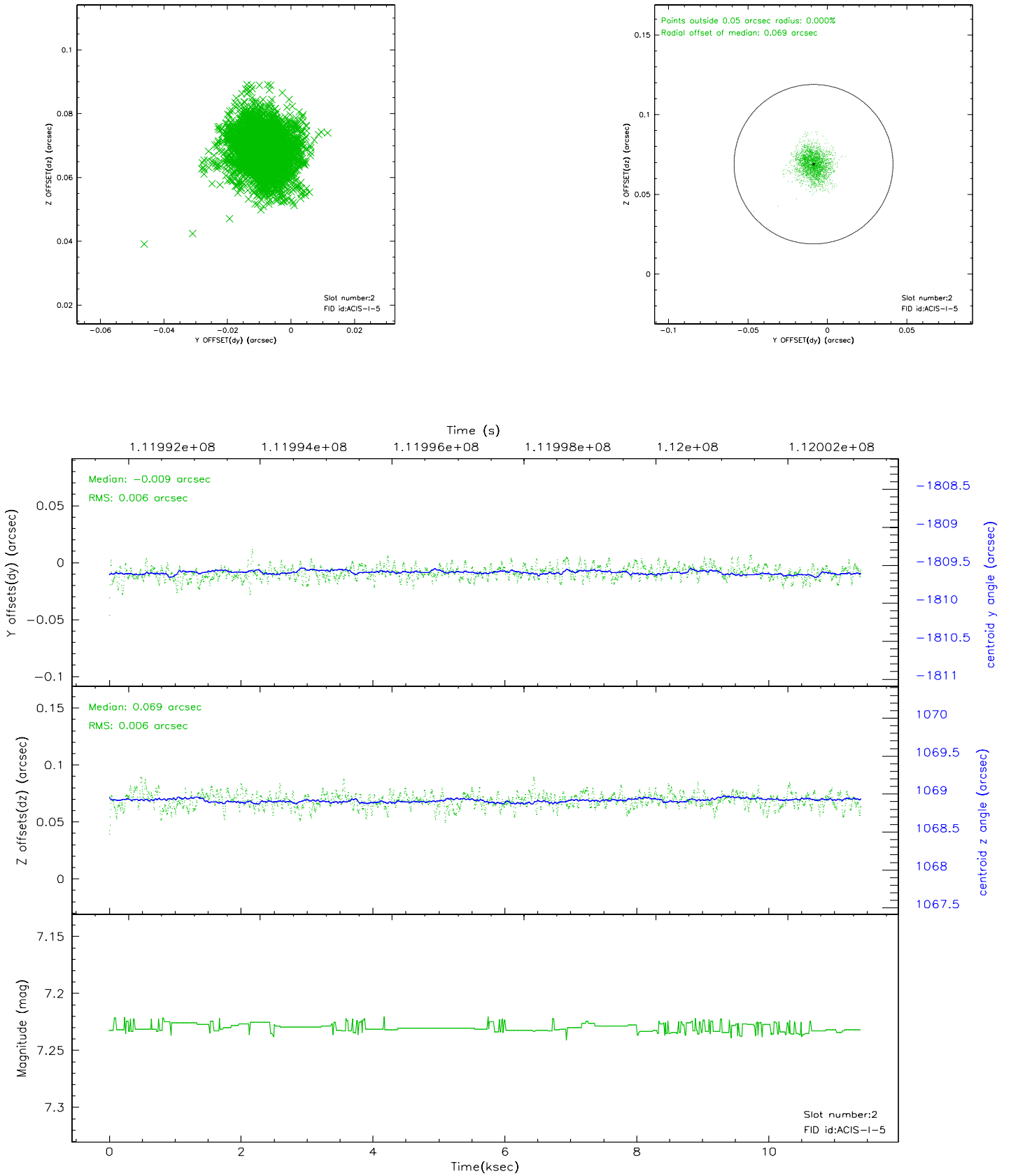
2.5.1 Slot 0



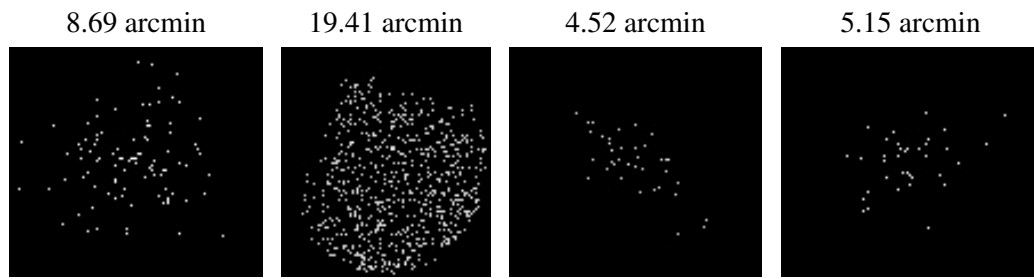
2.5.2 Slot 1



2.5.3 Slot 2



3 Point Sources



A Summary

A.1 Status

V&V Scientist	Beth Sundheim
V&V Date (YYYY-MM-DD)	2006.12.14
V&V Edition	1
V&V Disposition and Status	OK
V&V Charge Time	10.95

A.2 Comments

Roll constraint satisfied.