

V&V Reference Report

L2 ASCDS Version : 7.6.9

Observation 2267 - L2 Version 001
Chandra X-Ray Center

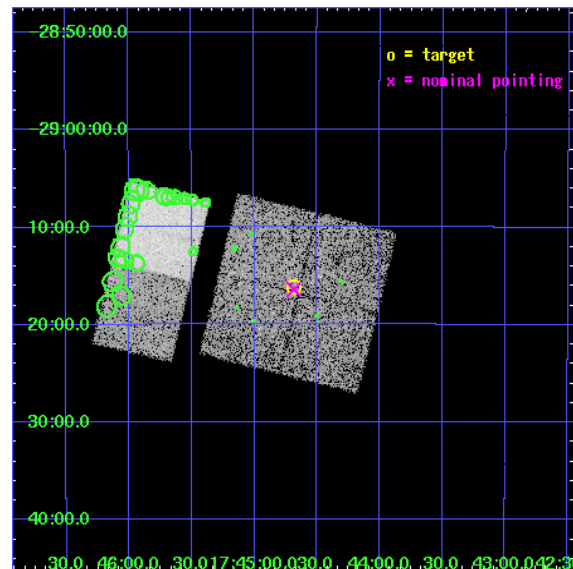
L2 Processing Date : Dec 14 2006

Contents

1	Front	2
2	OBI	3
2.1	OBI	3
2.1.1	Images	3
2.1.2	Bias	3
2.1.3	Parameters	4
2.1.4	Events	4
2.2	Compared Parameters	5
2.3	Aspect	6
2.4	Star Slots	9
2.4.1	Slot 3	9
2.4.2	Slot 4	10
2.4.3	Slot 5	11
2.4.4	Slot 6	12
2.4.5	Slot 7	13
2.5	FID Slots	14
2.5.1	Slot 0	14
2.5.2	Slot 1	15
2.5.3	Slot 2	16
3	Point Sources	17
A	Summary	18
A.1	Status	18
A.2	Comments	18

1 Front

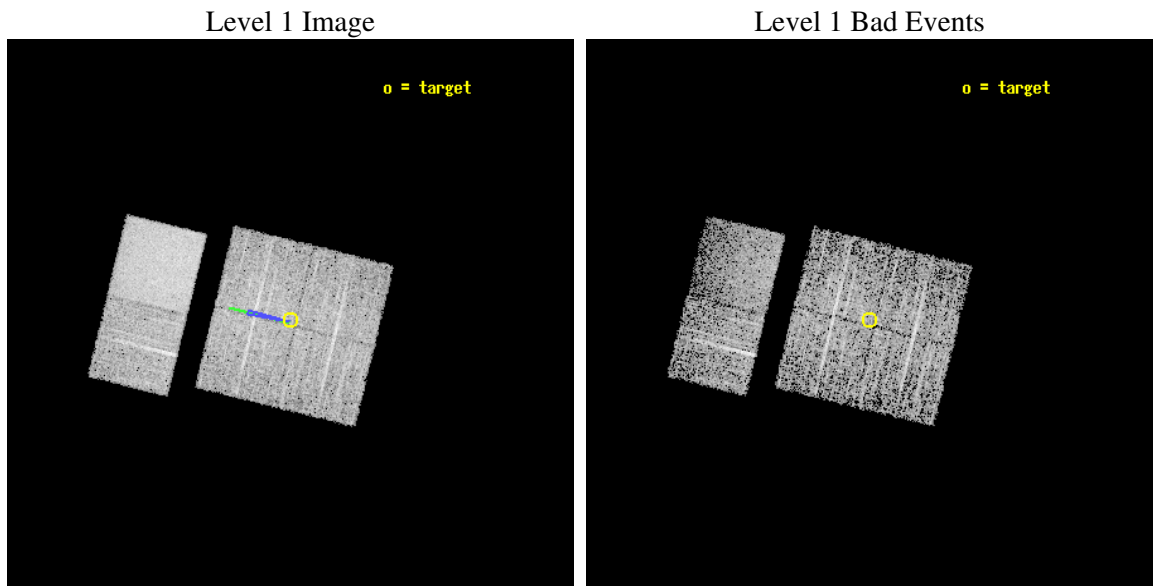
seq_num	900094
obs_id	2267
title	CHANDRA SURVEY OF THE GALACTIC RIDGE AROUND THE MILKY WAY CENTER
observer	Prof. Q. Daniel Wang
object	GCS 20
dtcycle	0
cycle	P
ra_targ	266.1721
dec_targ	-29.2689
ra_nom	266.17123579744
dec_nom	-29.273564008899
roll_nom	283.8072714539
revision	2
ontime	11628.80001083
livetime	11481.54914307
ontime0	11625.559030578
ontime1	11625.559030592
ontime2	11628.80001083
ontime3	11628.80001083
ontime6	11628.80001083
ontime7	11628.80001083
l2events	76370



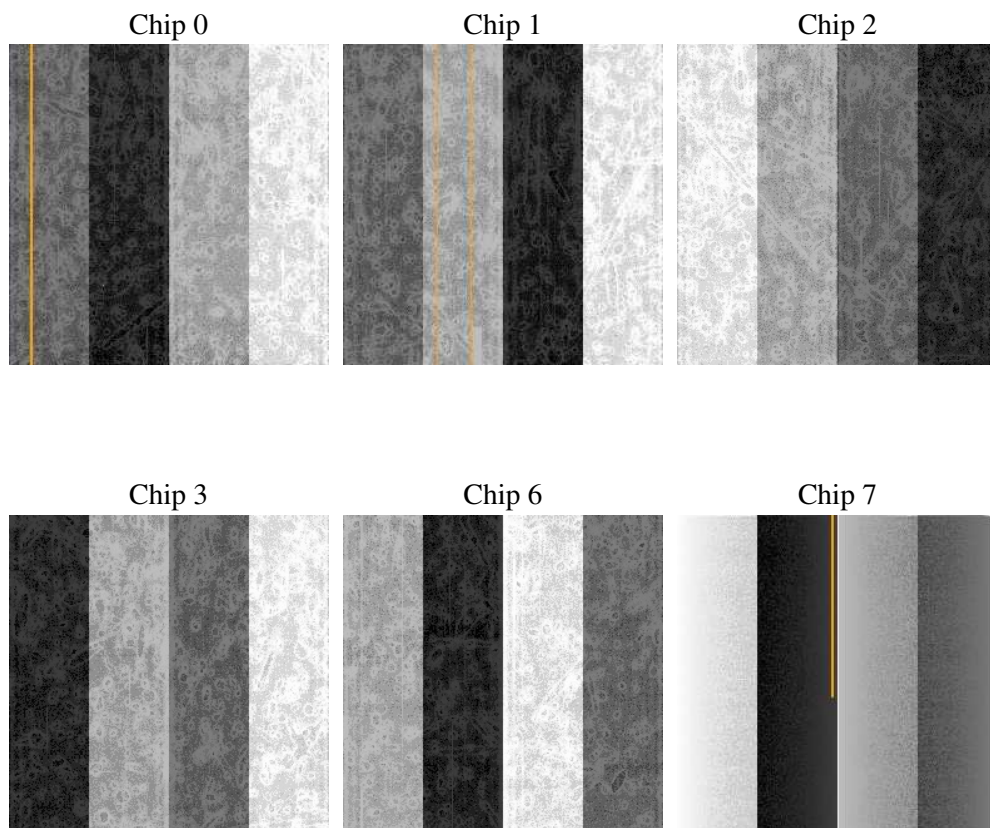
2 OBI

2.1 OBI

2.1.1 Images



2.1.2 Bias



2.1.3 Parameters

obi_num	0
ascdsver	7.6.9
caldbver	3.2.4
date	2006-12-14T14:18:55
revision	2

sched_exp_time	11871.431000
ontime	11635.214175299
ontime0	11631.973195046
ontime1	11631.973195061
ontime2	11635.214175299
ontime3	11635.214175299
ontime6	11635.214175299
ontime7	11635.214195207
l1events	224166

2.1.4 Events

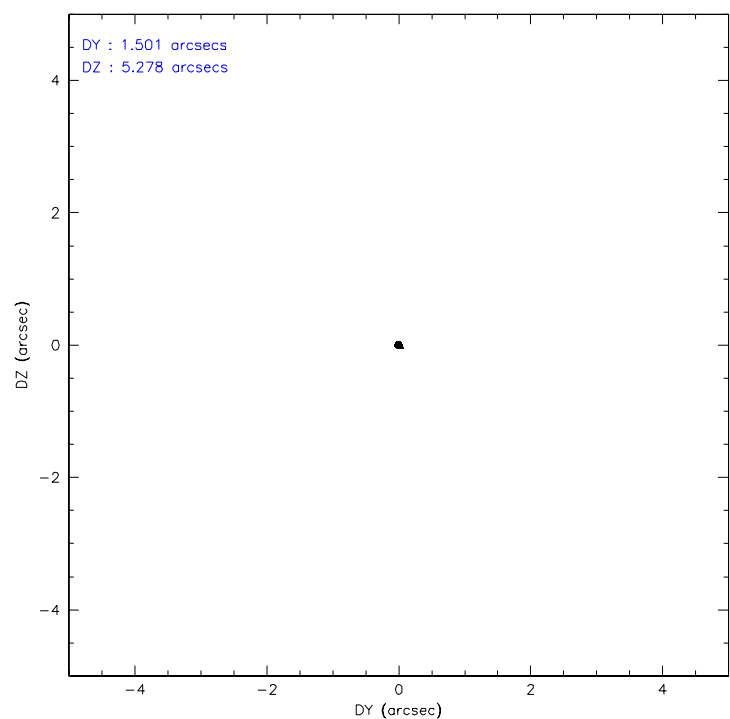
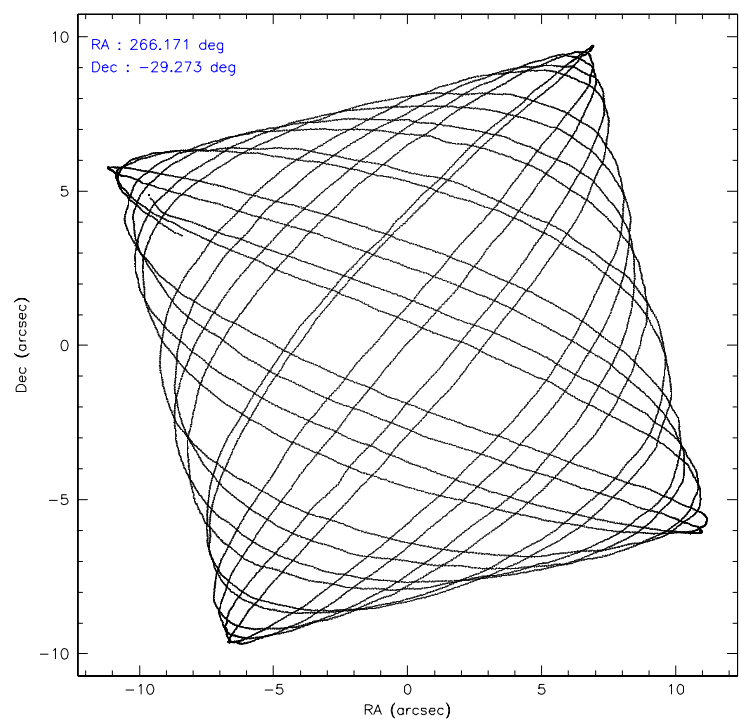
	ccd 0	ccd 1	ccd 2	ccd 3	ccd 6	ccd 7
level 1 events	31659	31105	33142	34649	35274	58337
rejected events	24059	23385	25021	25753	25209	20462
rejected %	75%	75%	75%	74%	71%	35%

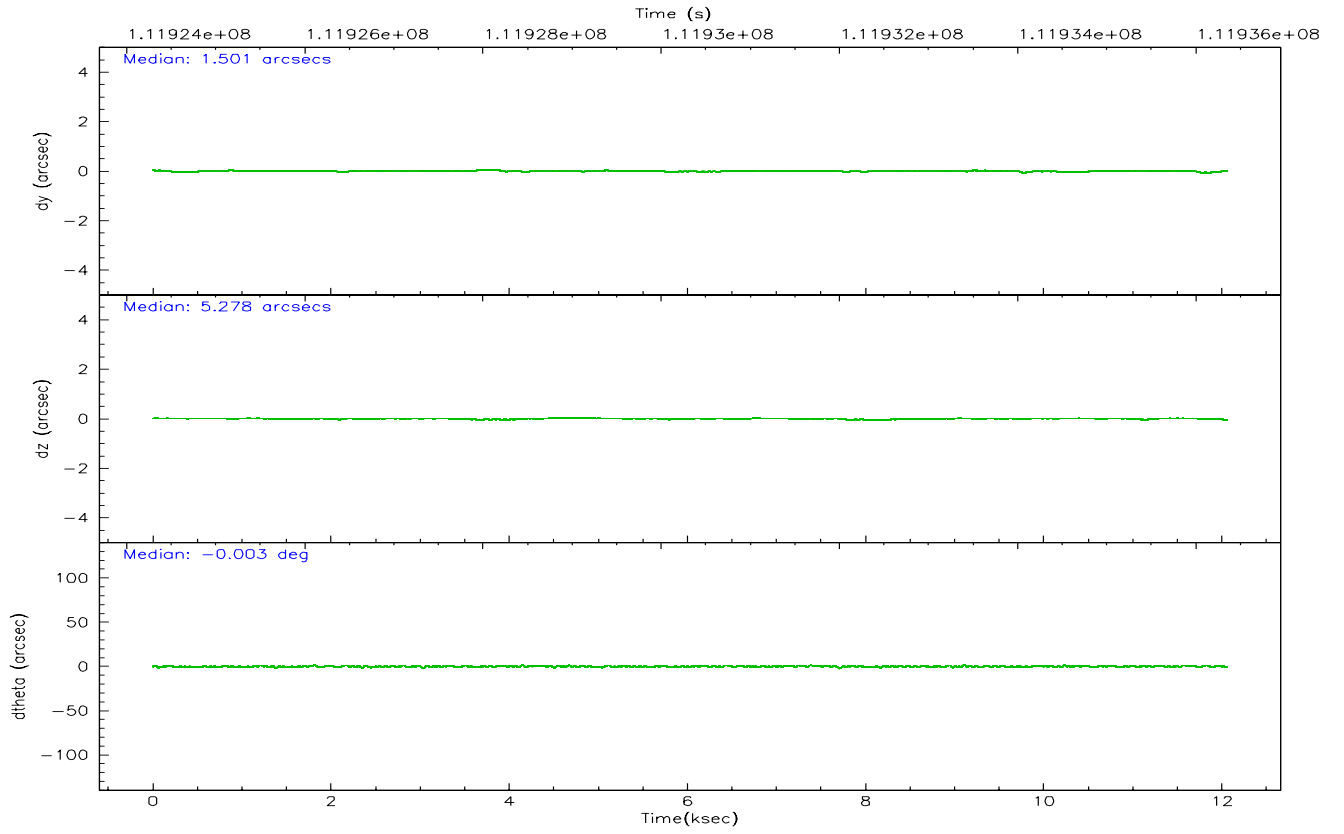
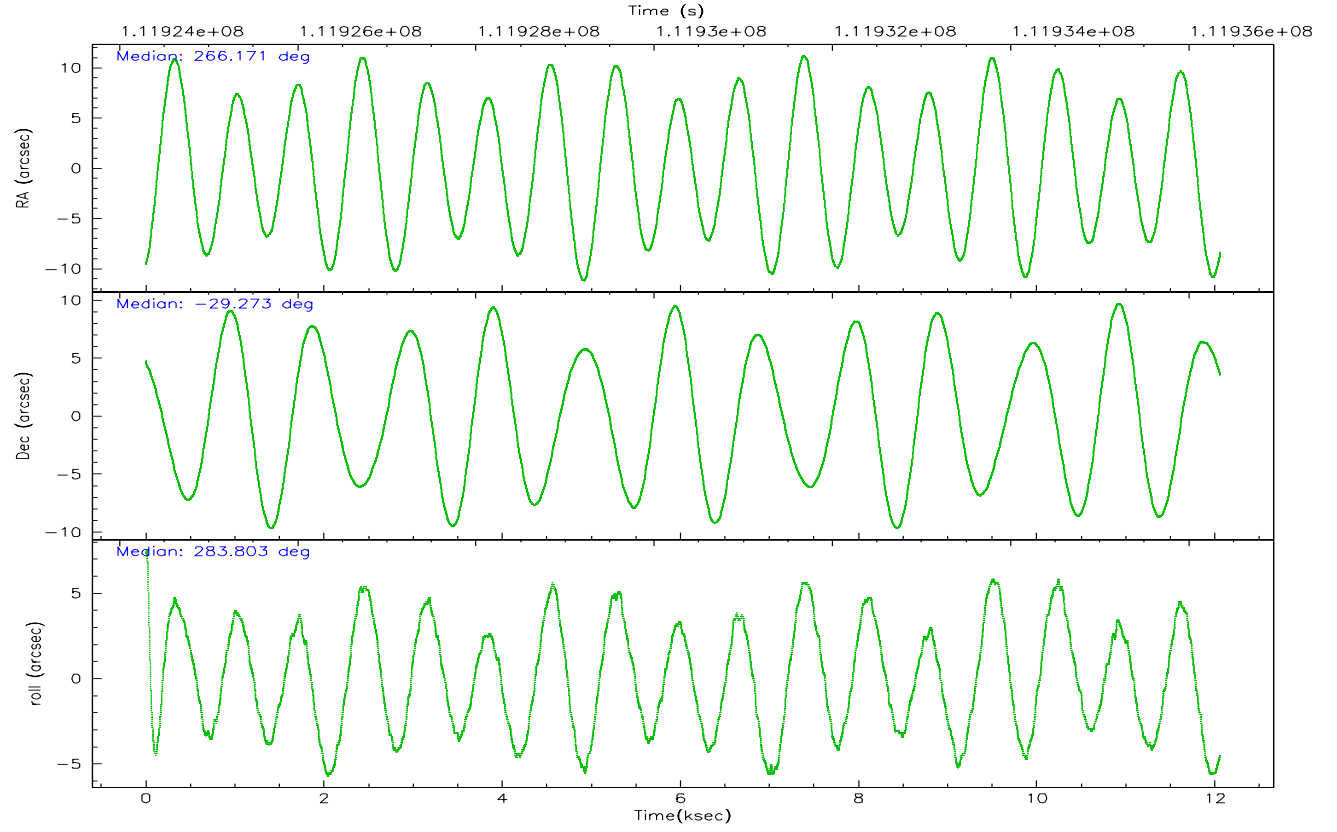
	ccd 0	ccd 1	ccd 2	ccd 3	ccd 6	ccd 7
grade 0 events	4062	4107	4465	4958	6103	2549
	12%	13%	13%	14%	17%	4%
grade 1 events	35	31	30	38	45	21
	0%	0%	0%	0%	0%	0%
grade 2 events	1371	1353	1414	1526	1538	9101
	4%	4%	4%	4%	4%	15%
grade 3 events	562	598	572	628	650	2296
	1%	1%	1%	1%	1%	3%
grade 4 events	536	589	593	659	629	2244
	1%	1%	1%	1%	1%	3%
grade 5 events	1172	1331	1084	1357	1449	3479
	3%	4%	3%	3%	4%	5%
grade 6 events	1070	1076	1083	1131	1152	21696
	3%	3%	3%	3%	3%	37%
grade 7 events	22851	22020	23901	24352	23708	16951
	72%	70%	72%	70%	67%	29%

2.2 Compared Parameters

Parameter	Planned	Actual	Parameter	Planned	Actual
Instrument	ACIS	ACIS	Obspar format version number	6	6
Detector	ACIS-012367	ACIS-012367	Obspar file type	PREDICTED	ACTUAL
Grating	NONE	NONE	Obspar update status	NONE	UPDATED
Data mode	FAINT	FAINT	Number of optional ACIS chips dropped	0	0
Observation mode	POINTING	POINTING	On-chip summing requested	N	N
Pointing RA	266.149429	266.171235797445	Subarray requested	NONE	NONE
Pointing Dec	-29.253795	-29.27356400889853	Alternating exposures requested	N	N
Pointing Roll	283.587920	283.8072714538987	Primary exposure time	0.000000	3.2
Roll angle	283.600000	283.600000			
Roll tolerance	2.000000	2.000000			
Roll constraint allows 180D rotation	N	N			
SIM focus pos (mm)	-0.782348	-0.7809083437167272			
SIM defocus (mm)	0	0.001439871863259334			
SIM translation stage pos (mm)	-233.592463	-233.5874344608287			
SIM translation stage offset (mm)	0	-0.005018542100998502			
Observation start time	111924484.184000	111924108.14389			
Observation start date	2001-07-19T10:07:00	2001-07-19T10:01:48			
Observation end time	111936356.184000	111936670.54438			
Observation end date	2001-07-19T13:24:52	2001-07-19T13:31:10			
Read mode	TIMED	TIMED			

2.3 Aspect



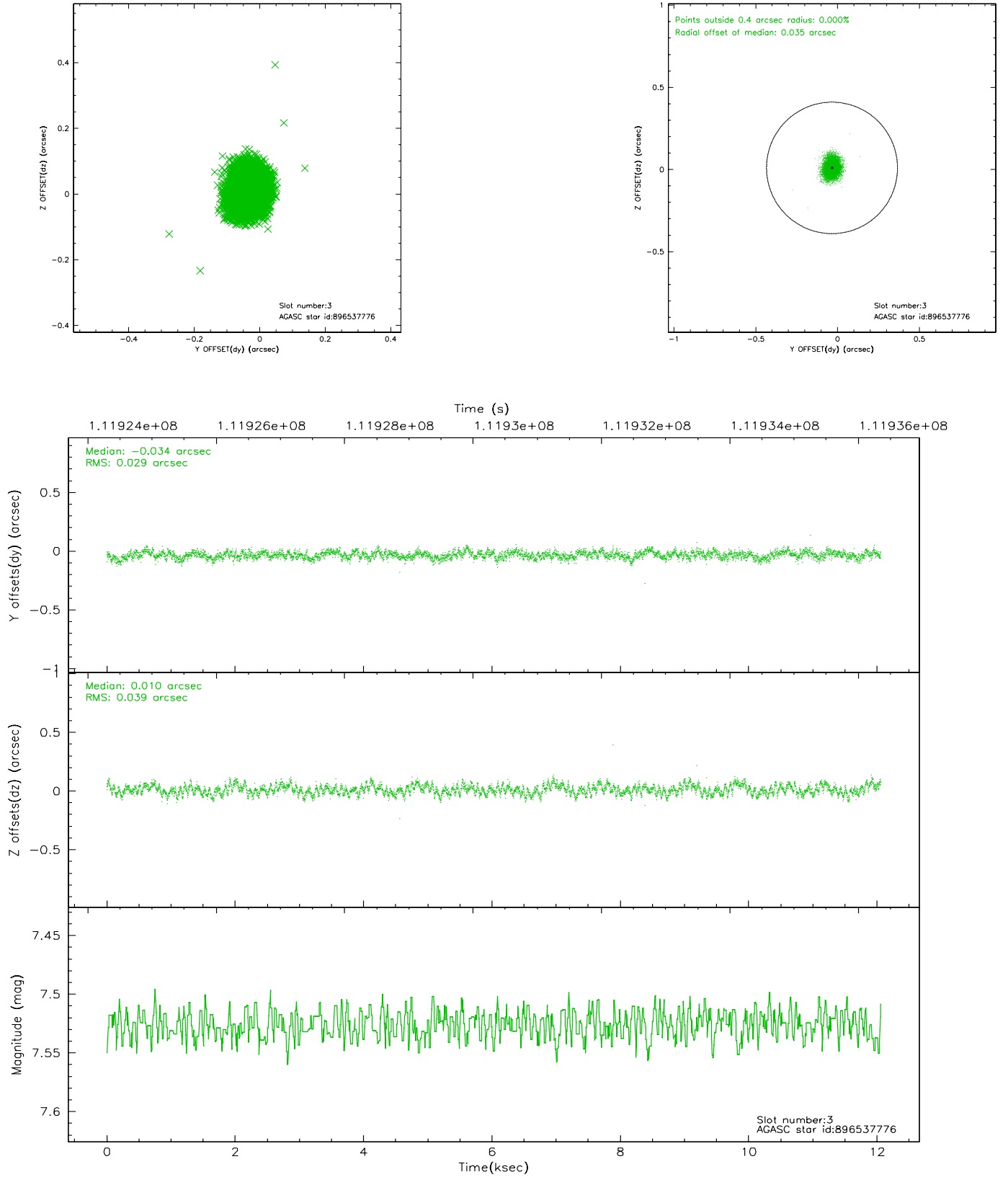


Slot Statistics

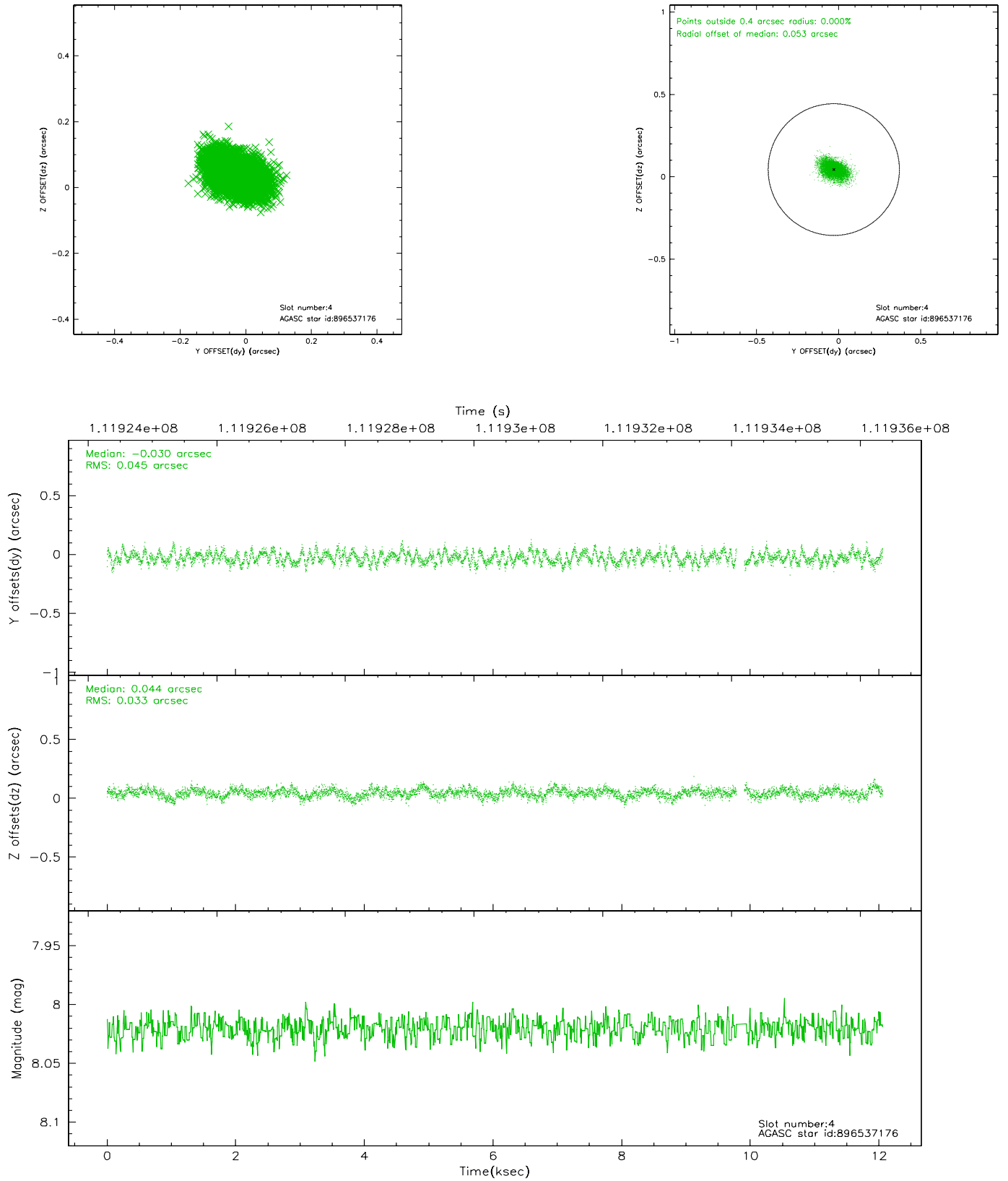
slot	status	id	mag	n_pts	med_dy	med_dz	dr1	dr2	ra	dec	mean_y	mean_z
0	FID	ACIS-I-2	7.15	2941	-0.013	-0.024	0.008	0.015	0.000000	0.000000	-755.84	-835.02
1	FID	ACIS-I-4	7.19	2941	-0.072	0.024	0.005	0.010	0.000000	0.000000	2157.95	1071.02
2	FID	ACIS-I-5	7.23	2939	-0.016	0.068	0.008	0.014	0.000000	0.000000	-1809.15	1069.35
3	GUIDE	896537776	7.53	5883	-0.034	0.010	0.051	0.082	266.655684	-29.665673	1817.91	1190.01
4	GUIDE	896537176	8.02	5820	-0.030	0.044	0.059	0.098	266.498272	-28.678259	-1752.08	1557.11
5	GUIDE	896536320	8.97	5883	0.035	-0.022	0.069	0.112	266.369048	-29.307026	349.92	624.91
6	GUIDE	896403224	8.27	5882	0.049	-0.052	0.062	0.100	265.612825	-29.438915	257.92	-1792.98
7	GUIDE	896405288	9.46	5876	-0.019	0.024	0.092	0.145	265.652078	-28.763879	-2078.41	-1112.83

2.4 Star Slots

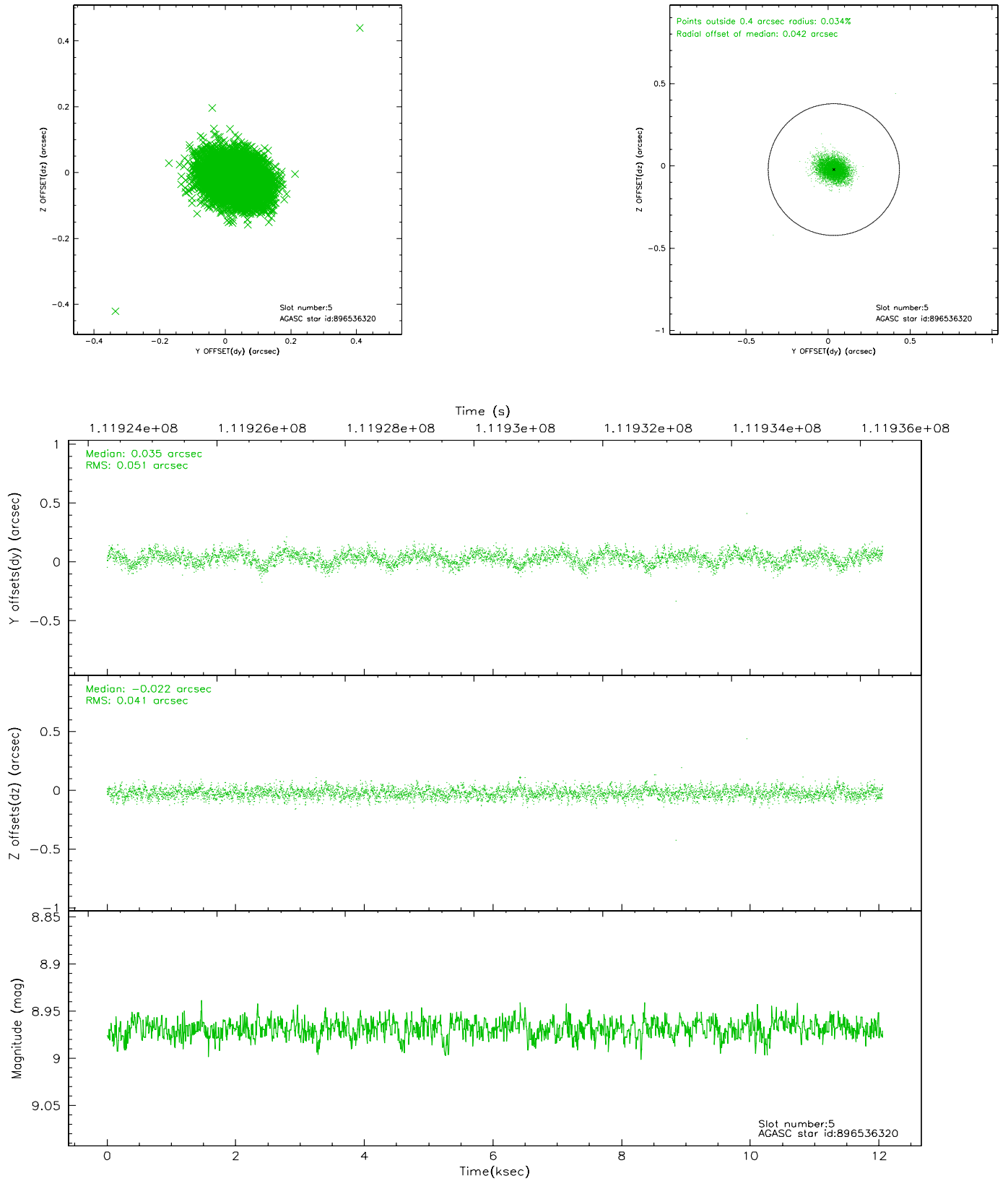
2.4.1 Slot 3



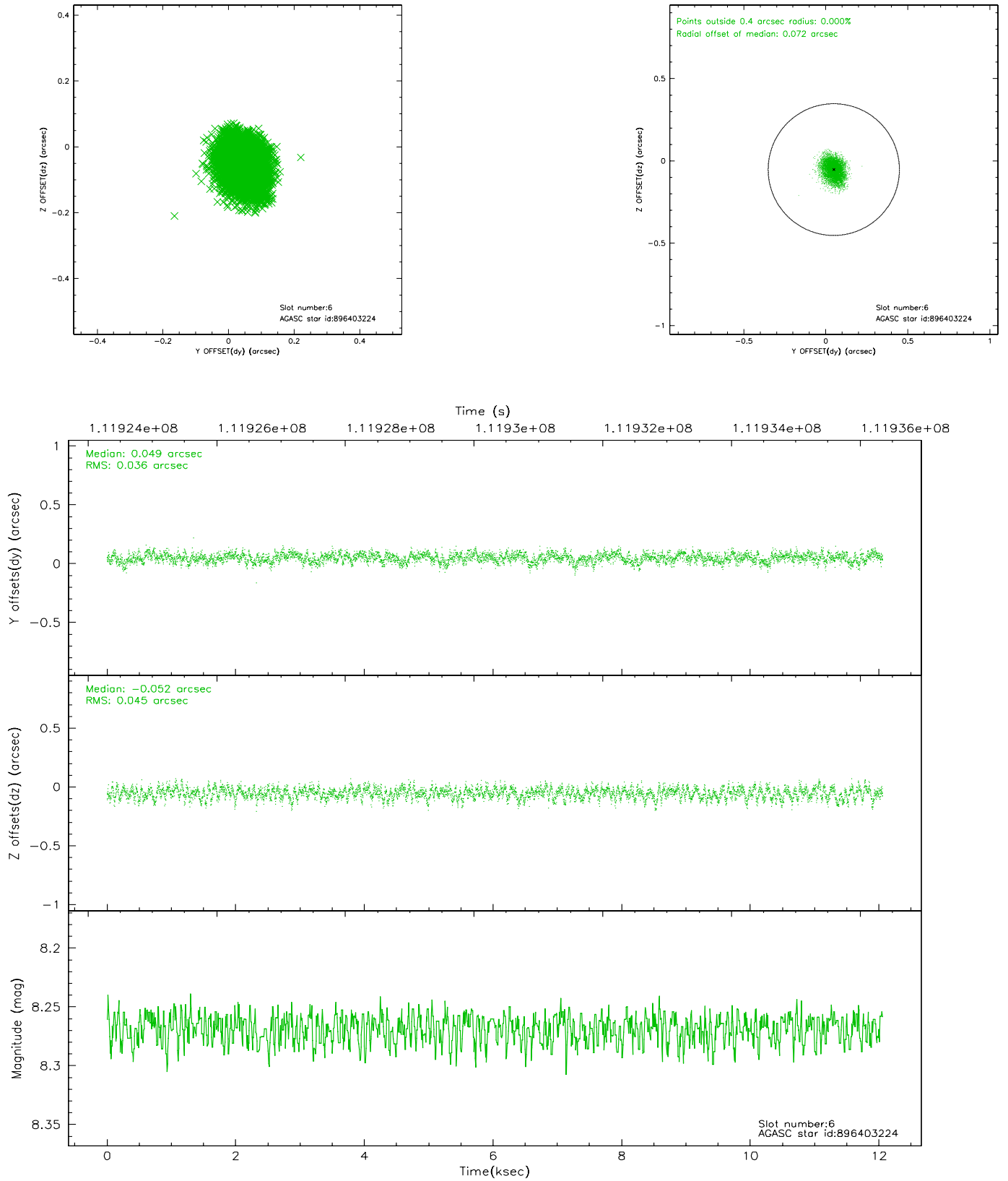
2.4.2 Slot 4



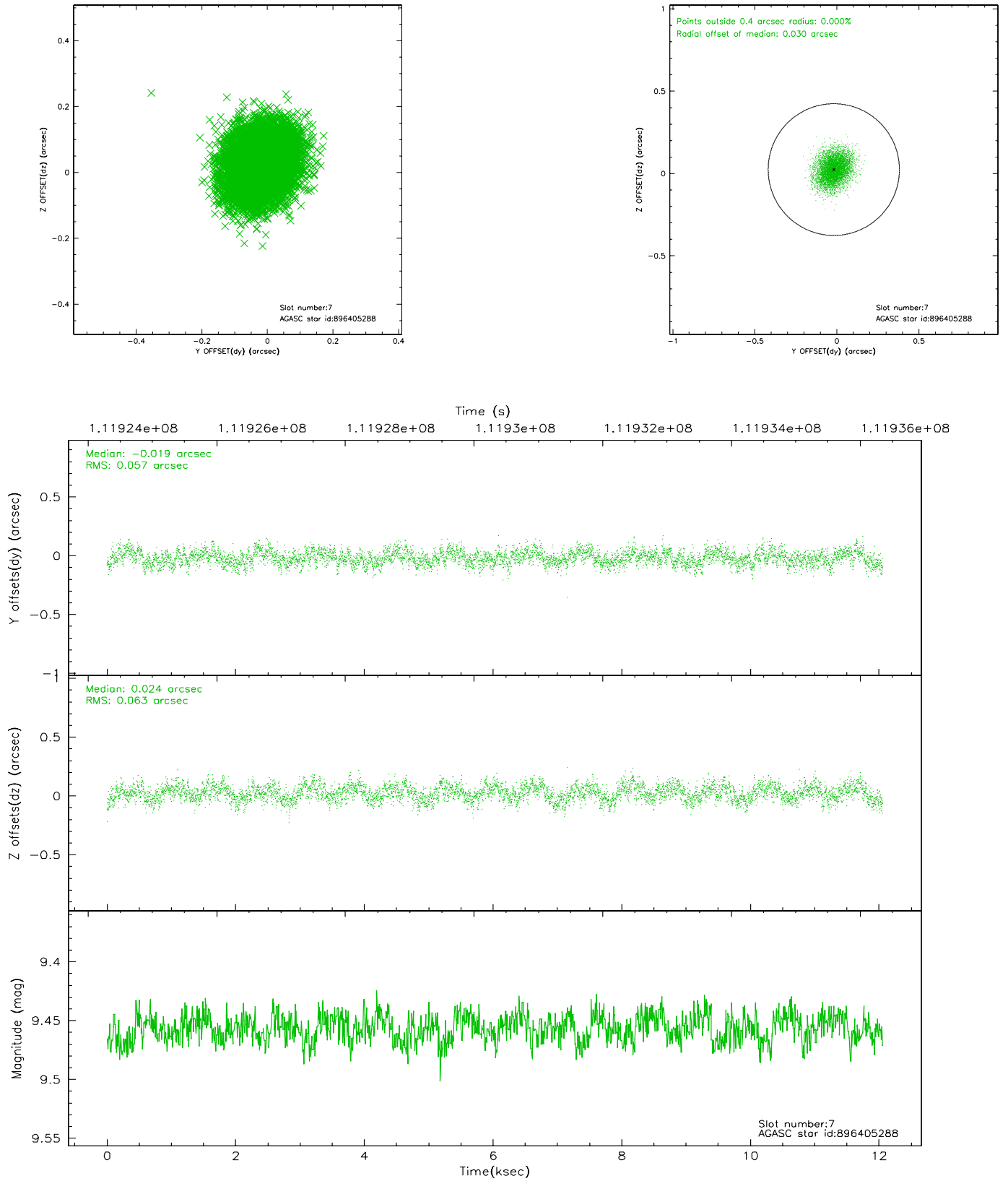
2.4.3 Slot 5



2.4.4 Slot 6

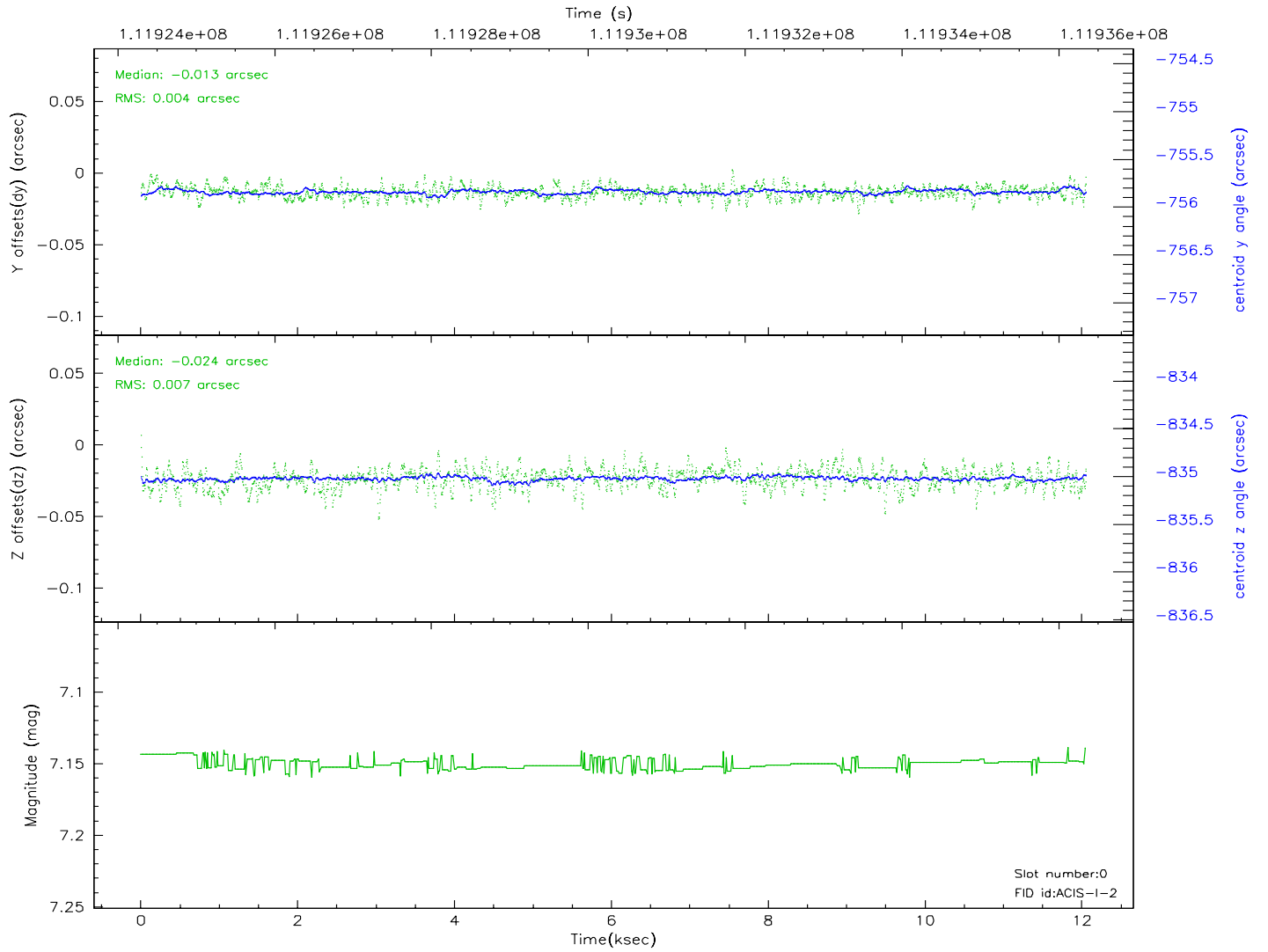
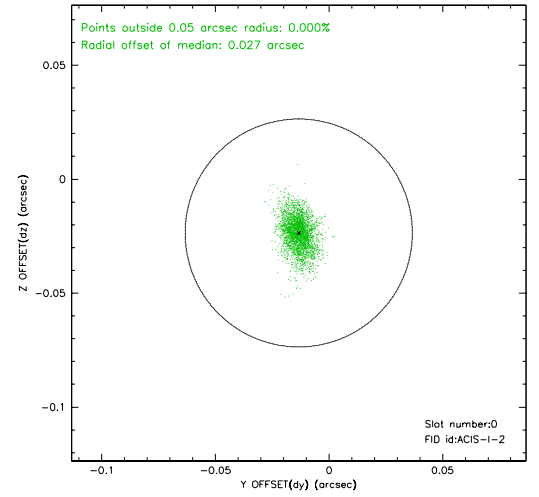
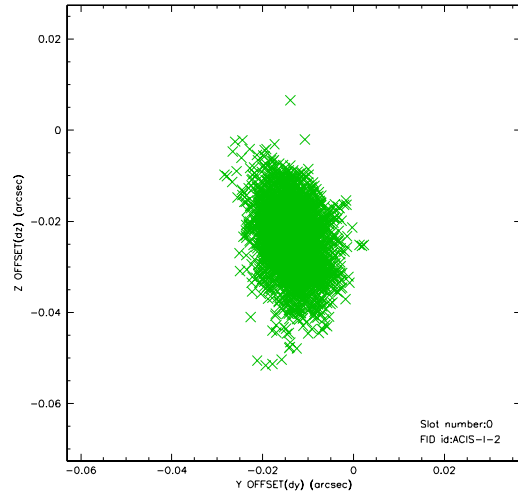


2.4.5 Slot 7

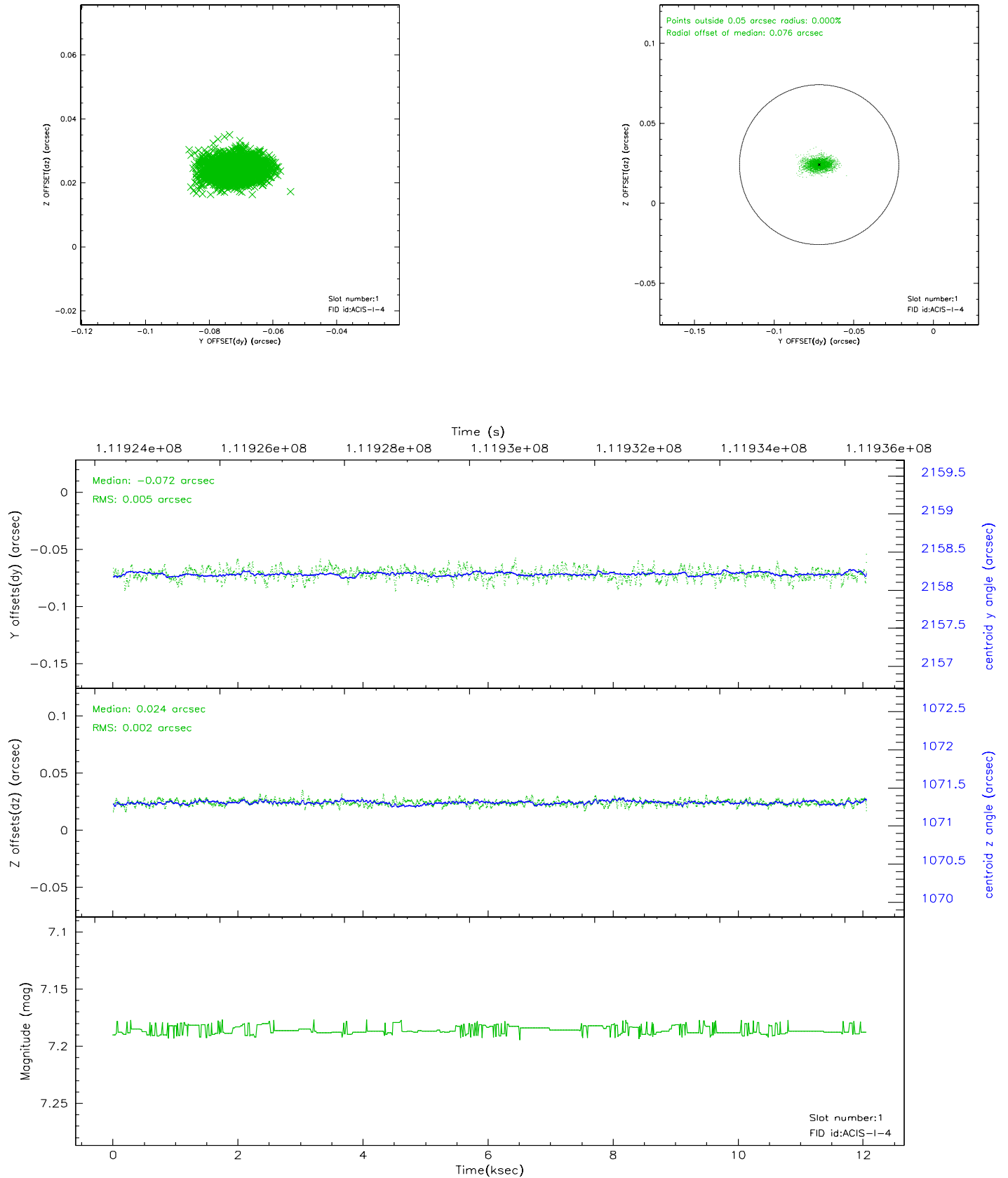


2.5 FID Slots

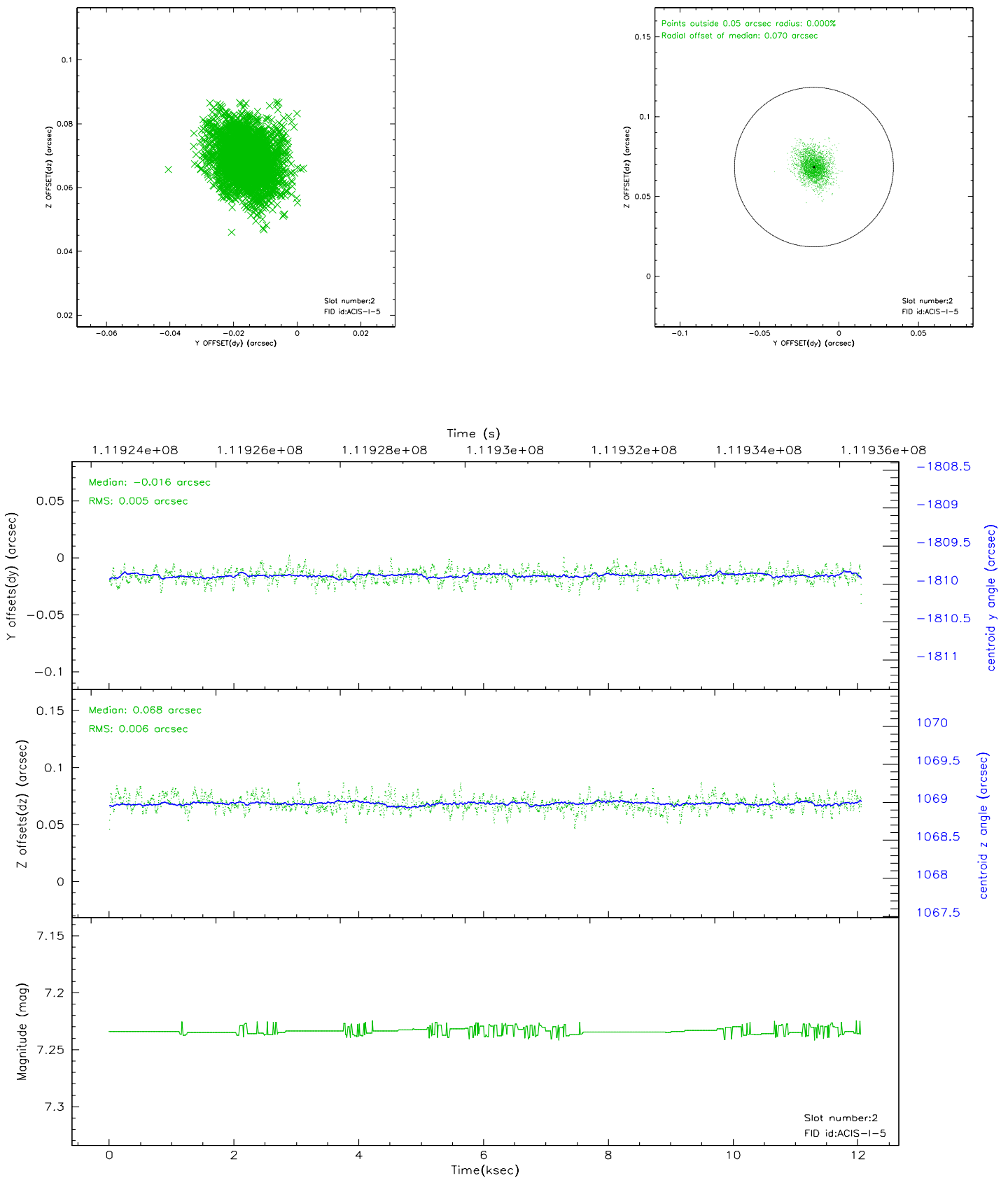
2.5.1 Slot 0



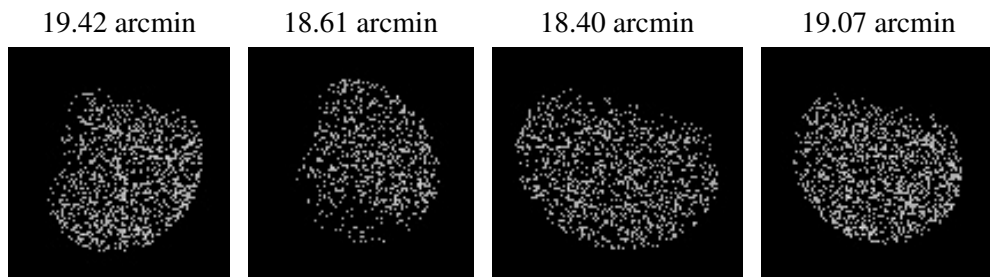
2.5.2 Slot 1



2.5.3 Slot 2



3 Point Sources



A Summary

A.1 Status

V&V Scientist	Beth Sundheim
V&V Date (YYYY-MM-DD)	2006.12.14
V&V Edition	1
V&V Disposition and Status	OK
V&V Charge Time	11.632

A.2 Comments

Roll constraint satisfied.