

# V&V Reference Report

## L2 ASCDS Version : 7.6.9

Observation 2265 - L2 Version 001  
Chandra X-Ray Center

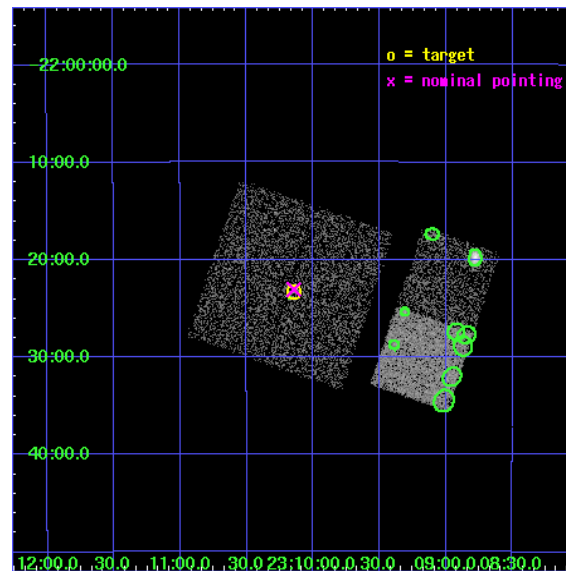
L2 Processing Date : Dec 8 2006

## Contents

<b>1</b>	<b>Front</b>	<b>2</b>
<b>2</b>	<b>OBI</b>	<b>3</b>
2.1	OBI . . . . .	3
2.1.1	Images . . . . .	3
2.1.2	Bias . . . . .	3
2.1.3	Parameters . . . . .	4
2.1.4	Events . . . . .	4
2.2	Compared Parameters . . . . .	5
2.3	Aspect . . . . .	6
2.4	Star Slots . . . . .	9
2.4.1	Slot 3 . . . . .	9
2.4.2	Slot 4 . . . . .	10
2.4.3	Slot 5 . . . . .	11
2.4.4	Slot 6 . . . . .	12
2.4.5	Slot 7 . . . . .	13
2.5	FID Slots . . . . .	14
2.5.1	Slot 0 . . . . .	14
2.5.2	Slot 1 . . . . .	15
2.5.3	Slot 2 . . . . .	16
<b>3</b>	<b>Point Sources</b>	<b>17</b>
<b>A</b>	<b>Summary</b>	<b>18</b>
A.1	Status . . . . .	18
A.2	Comments . . . . .	18

# 1 Front

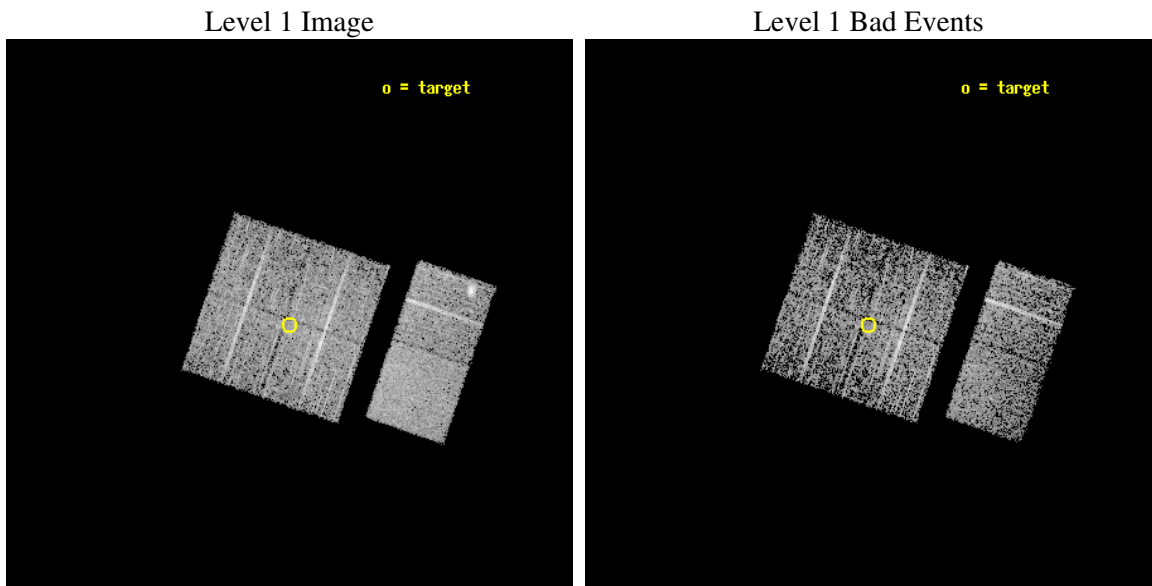
seq_num	900092
obs_id	2265
title	CHANDRA OBSERVATION OF HARD X-RAY SOURCES DISCOVERED WITH ASCA
observer	Dr Yoshihiro Ueda
object	AGX~J231008-2223
dtcycle	0
cycle	P
ra_targ	347.535833
dec_targ	-22.389111
ra_nom	347.53624419494
dec_nom	-22.384499889561
roll_nom	108.82468418457
revision	2
ontime	3052.8000028431
livetime	3014.1436110317
ontime0	3052.8000028431
ontime1	3052.8000028431
ontime2	3052.8000028431
ontime3	3052.8000028431
ontime6	3052.8000028431
ontime7	3052.8000028431
l2events	21951



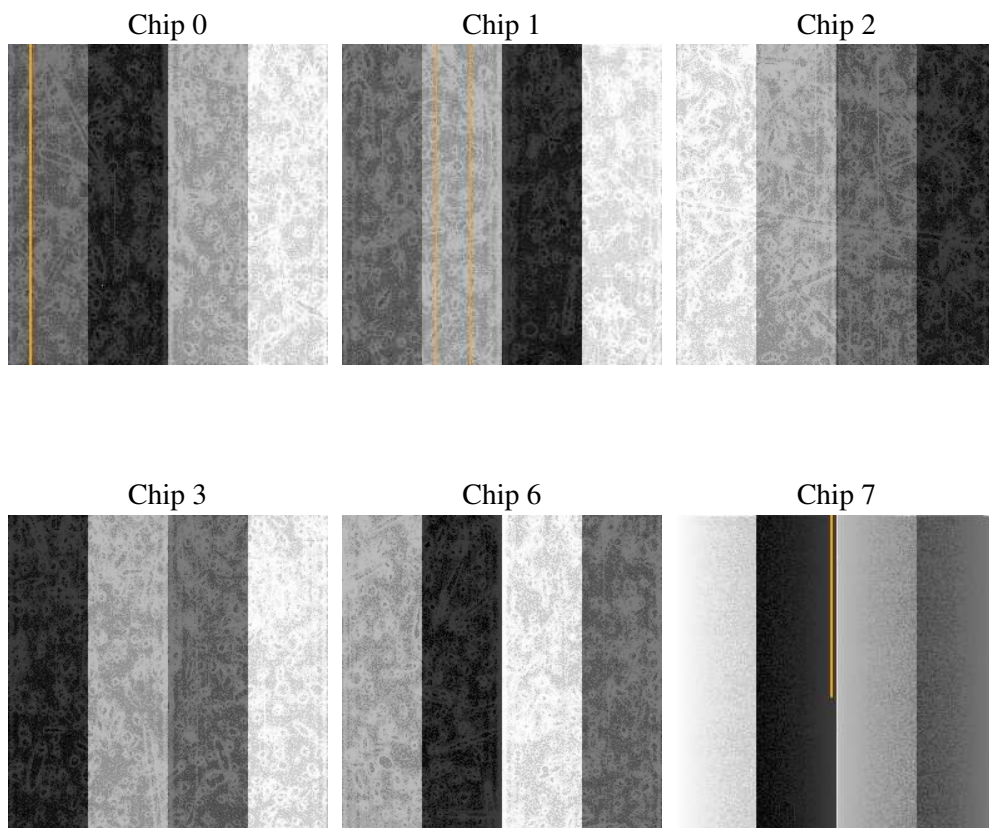
## 2 OBI

### 2.1 OBI

#### 2.1.1 Images



#### 2.1.2 Bias



### 2.1.3 Parameters

obi_num	0
ascdsver	7.6.9
caldsver	3.2.4
date	2006-12-08T07:28:05
revision	2

sched_exp_time	3300.000000
ontime	3059.505779177
ontime0	3059.505779177
ontime1	3059.505779177
ontime2	3059.505779177
ontime3	3059.505779177
ontime6	3059.505779177
ontime7	3059.505779177
llevents	134690

### 2.1.4 Events

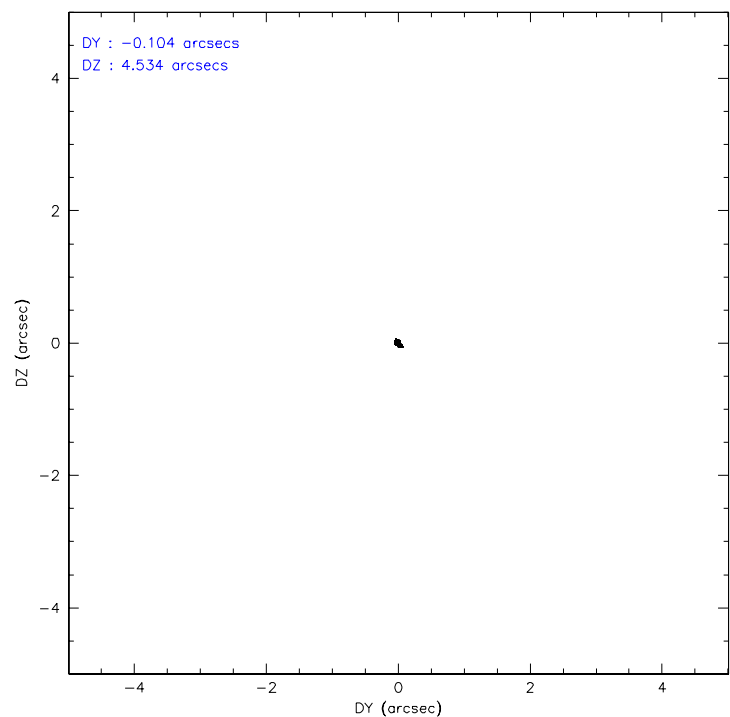
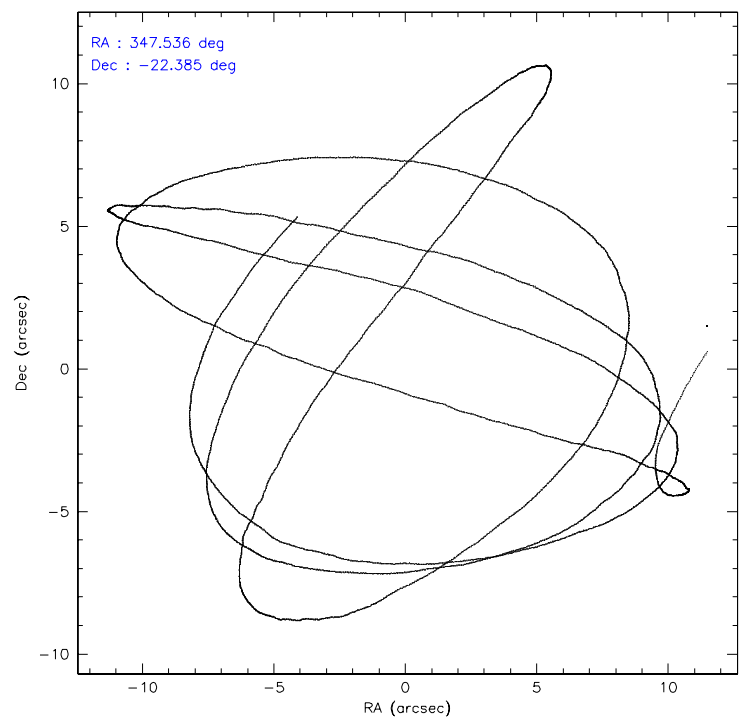
	ccd 0	ccd 1	ccd 2	ccd 3	ccd 6	ccd 7
level 1 events	19365	19864	21782	23423	23711	26545
rejected events	16836	17361	19230	20935	19909	16285
rejected %	86%	87%	88%	89%	83%	61%

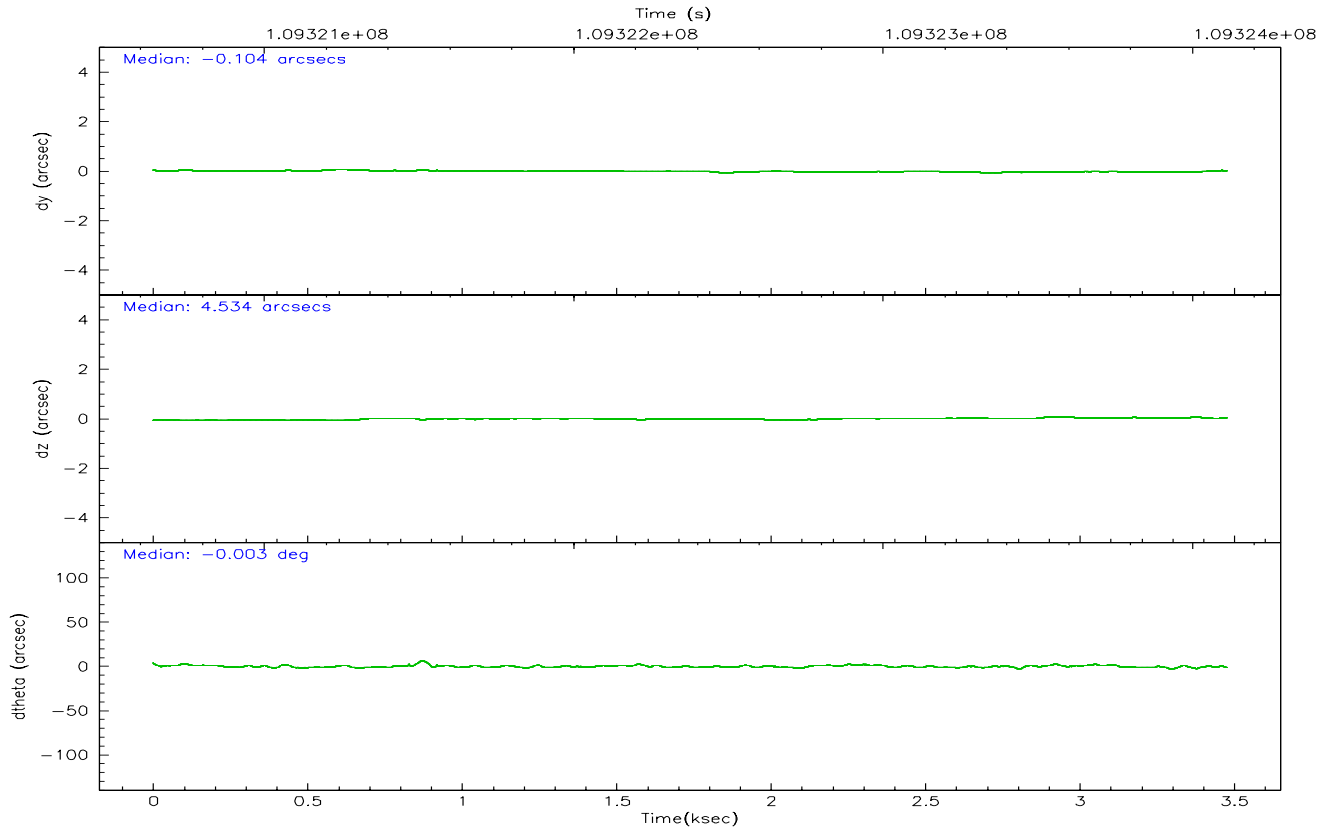
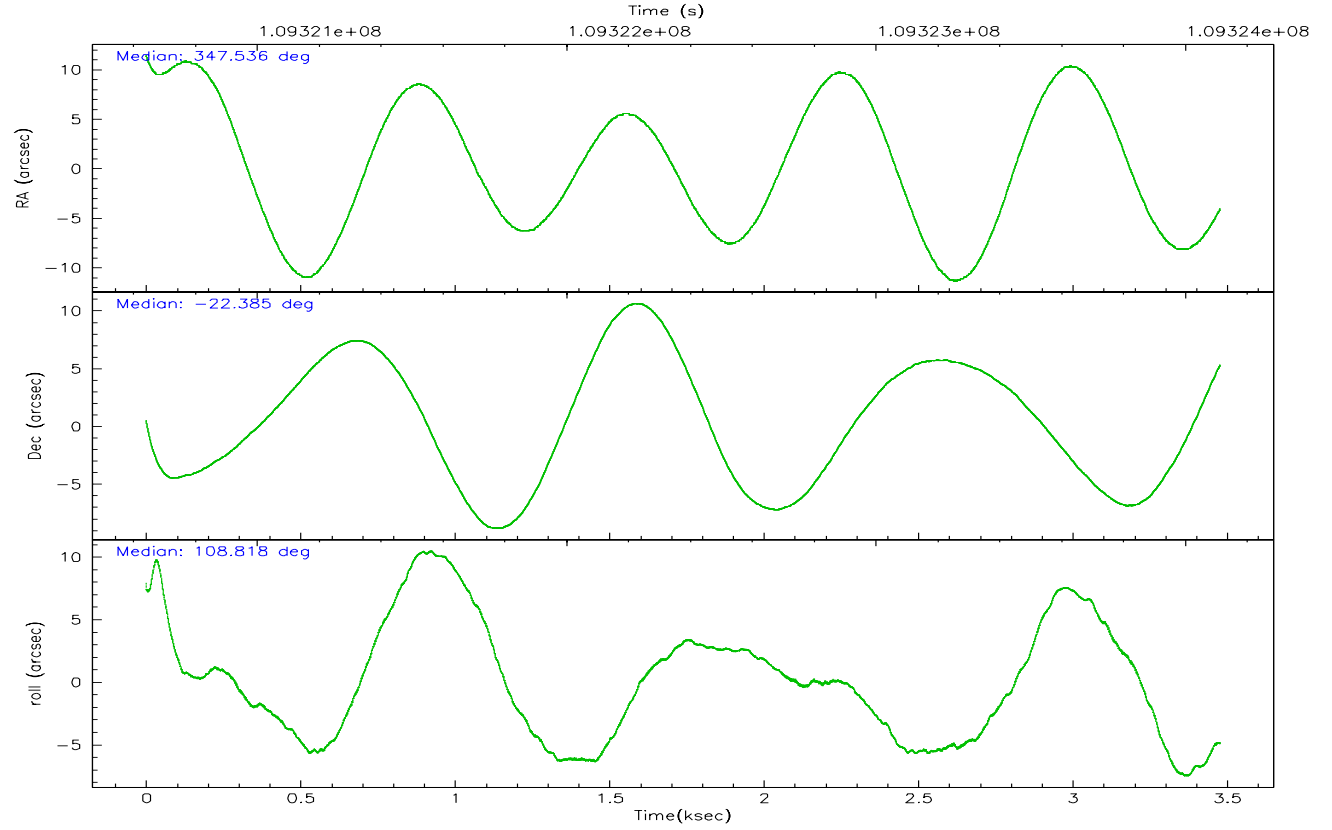
	ccd 0	ccd 1	ccd 2	ccd 3	ccd 6	ccd 7
grade 0 events	1172	1063	1173	1089	2037	596
	6%	5%	5%	4%	8%	2%
grade 1 events	7	11	10	12	14	14
	0%	0%	0%	0%	0%	0%
grade 2 events	486	480	501	479	646	2547
	2%	2%	2%	2%	2%	9%
grade 3 events	245	259	230	257	332	538
	1%	1%	1%	1%	1%	2%
grade 4 events	250	243	235	247	265	531
	1%	1%	1%	1%	1%	2%
grade 5 events	734	737	715	772	861	1715
	3%	3%	3%	3%	3%	6%
grade 6 events	389	463	416	421	535	6070
	2%	2%	1%	1%	2%	22%
grade 7 events	16082	16608	18502	20146	19021	14534
	83%	83%	84%	86%	80%	54%

## 2.2 Compared Parameters

Parameter	Planned	Actual	Parameter	Planned	Actual
Instrument	ACIS	ACIS	Obspar format version number	6	6
Detector	ACIS-012367	ACIS-012367	Obspar file type	PREDICTED	ACTUAL
Grating	NONE	NONE	Obspar update status	NONE	UPDATED
Data mode	FAINT	FAINT	Number of optional ACIS chips dropped	0	0
Observation mode	POINTING	POINTING	On-chip summing requested	N	N
Pointing RA	347.558565	347.5362441949361	Subarray requested	NONE	NONE
Pointing Dec	-22.402429	-22.38449988956058	Alternating exposures requested	N	N
Pointing Roll	108.624476	108.8246841845747	Primary exposure time	0.000000	3.2
SIM focus pos (mm)	-0.782348	-0.7809083437167272			
SIM defocus (mm)	0	0.001439871863259334			
SIM translation stage pos (mm)	-233.592463	-233.5874344608287			
SIM translation stage offset (mm)	0	-0.005018542100998502			
Observation start time	109320817.184000	109320004.31715			
Observation start date	2001-06-19T06:52:33	2001-06-19T06:40:04			
Observation end time	109324117.184000	109324266.77982			
Observation end date	2001-06-19T07:47:33	2001-06-19T07:51:06			
Read mode	TIMED	TIMED			

## 2.3 Aspect





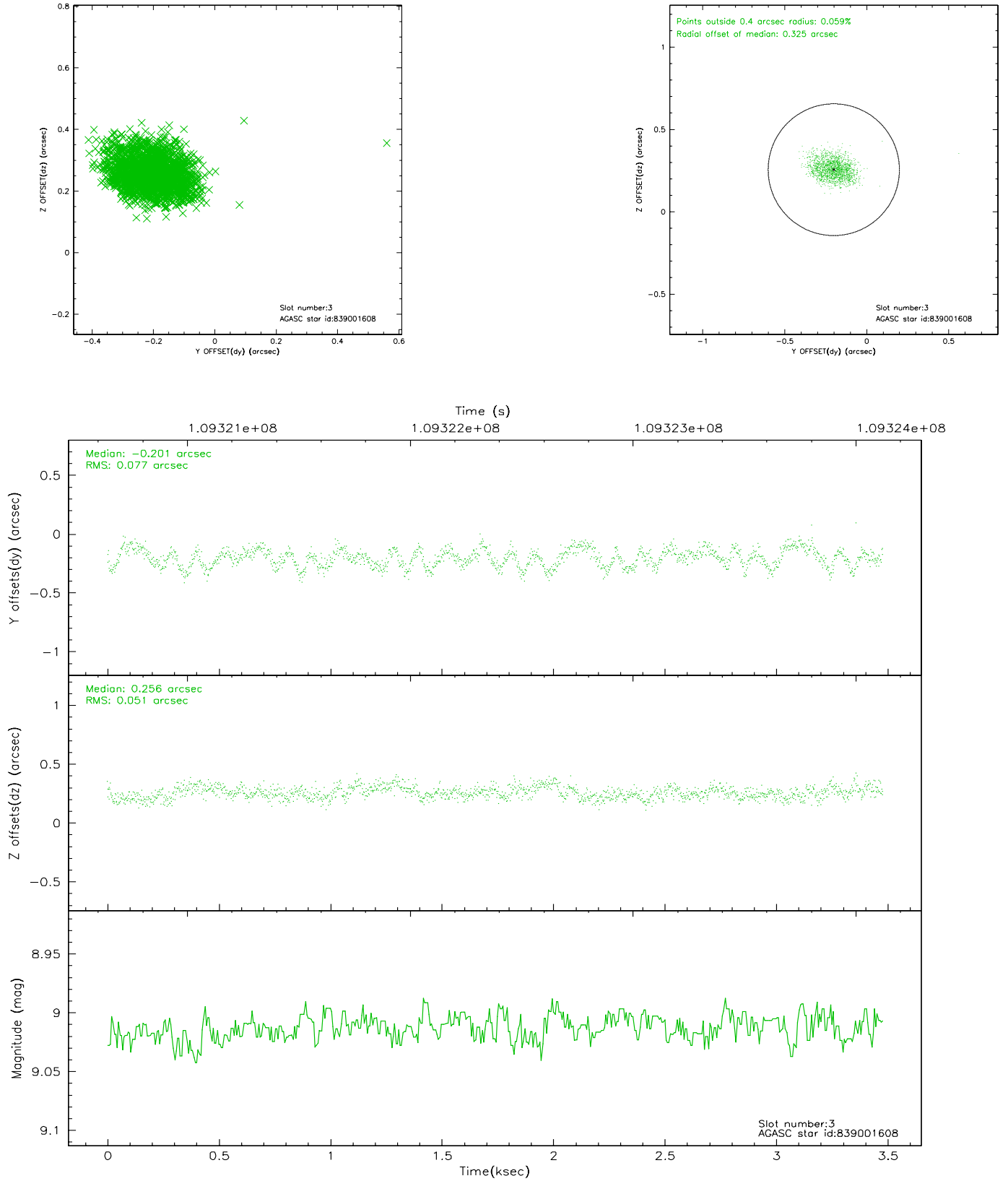
### Slot Statistics

slot	status	id	mag	n_pts	med_dy	med_dz	dr1	dr2	ra	dec	mean_y	mean_z
0	FID	ACIS-I-2	7.14	849	-0.053	0.000	0.006	0.012	0.000000	0.000000	-754.23	-834.23
1	FID	ACIS-I-4	7.17	849	-0.050	0.042	0.010	0.018	0.000000	0.000000	2159.00	1071.11
2	FID	ACIS-I-6	7.26	848	0.003	0.021	0.012	0.023	0.000000	0.000000	408.23	1715.32
3	GUIDE	839001608	9.01	1697	-0.201	0.256	0.098	0.153	347.928467	-21.735788	1878.69	-1937.30
4	GUIDE	913843072	9.60	1685	0.207	-0.345	0.121	0.197	347.177644	-23.136268	-2100.41	2037.95
5	GUIDE	839001536	10.43	1696	-0.110	-0.224	0.155	0.246	347.234677	-21.972765	1809.45	532.72
6	GUIDE	913835352	9.81	1697	0.142	0.170	0.162	0.253	348.156592	-22.623655	-1390.89	-1626.84
7	GUIDE	839000400	9.72	1693	-0.037	0.134	0.129	0.207	347.952883	-22.218103	207.67	-1457.05

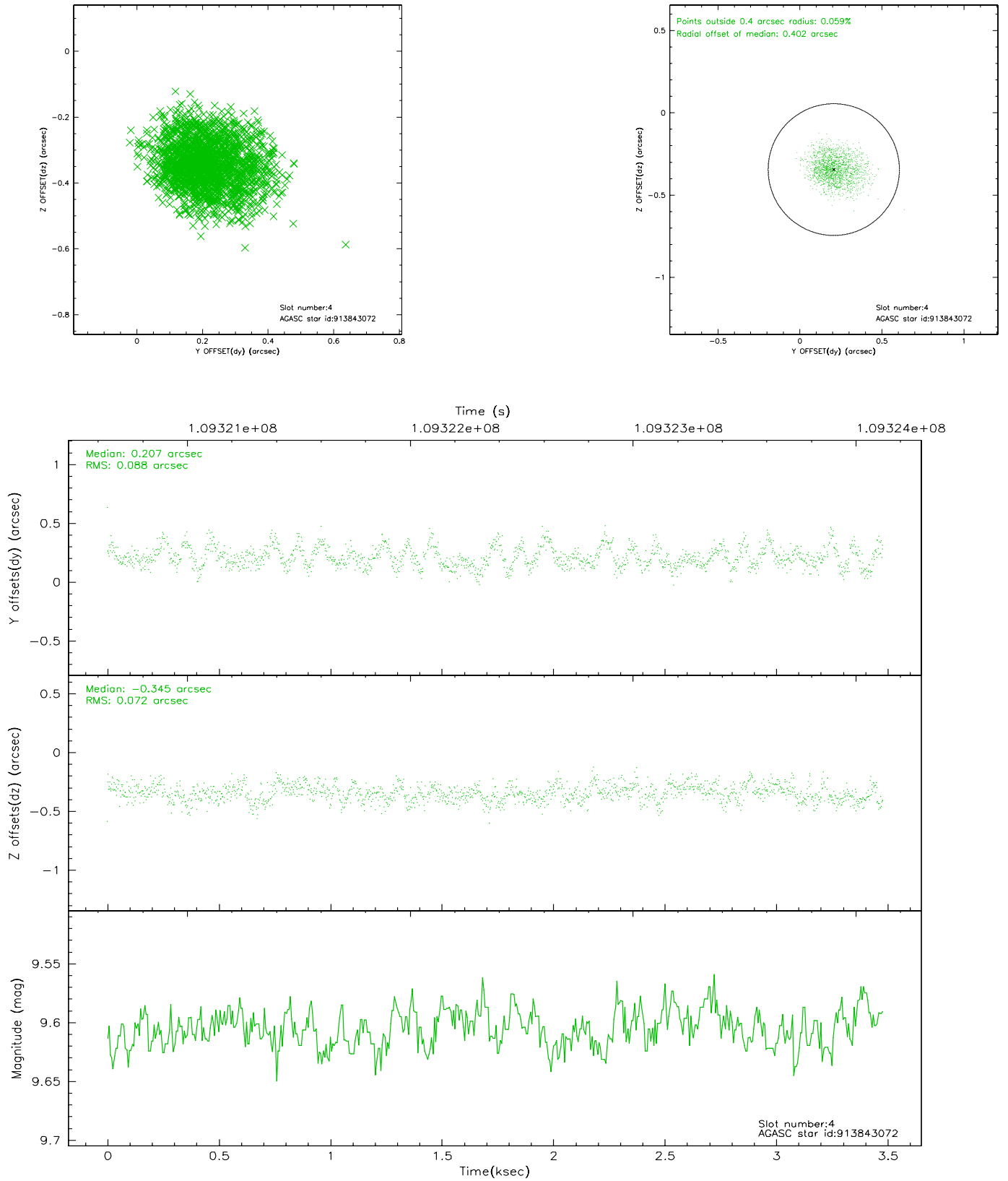


## 2.4 Star Slots

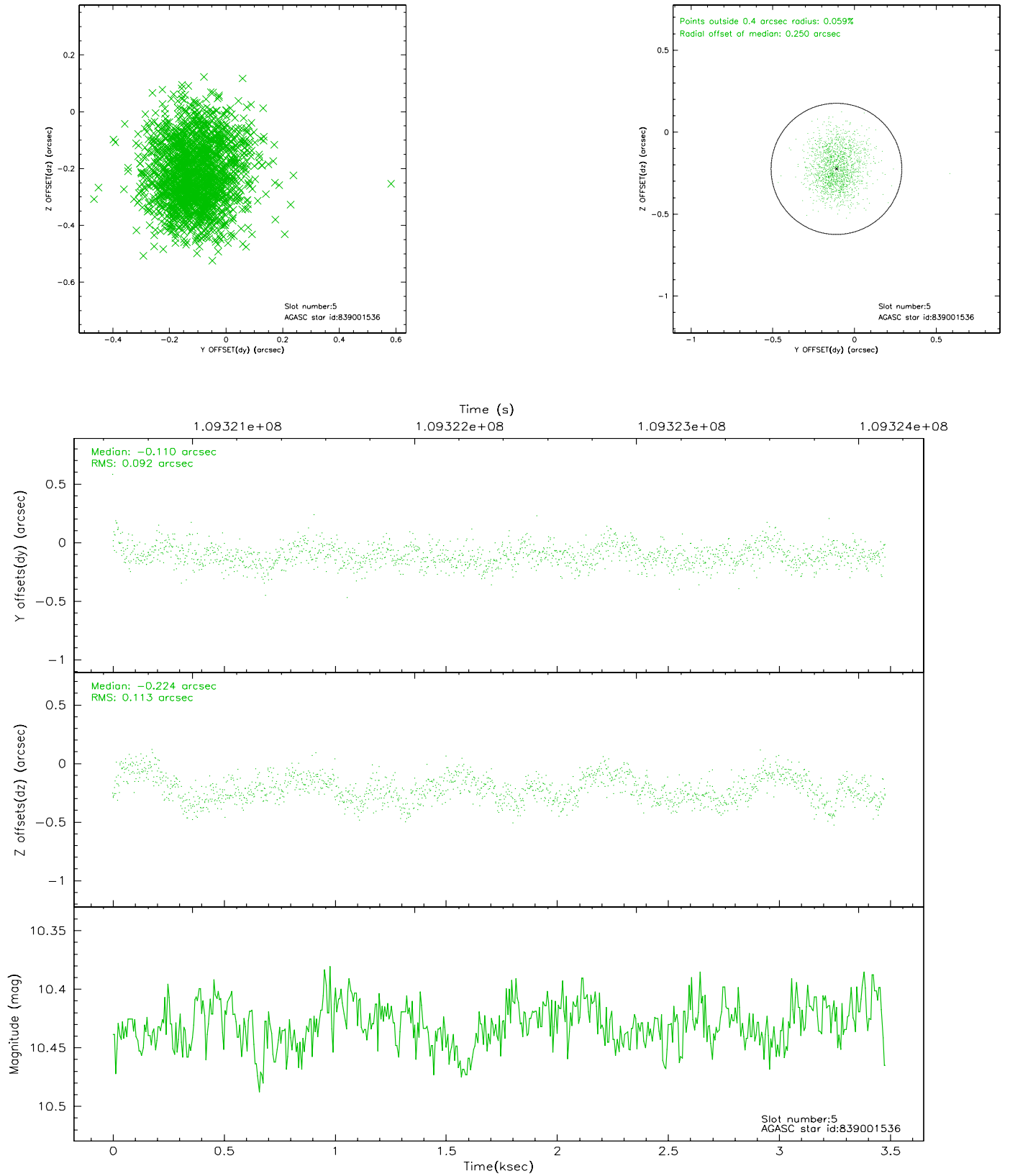
### 2.4.1 Slot 3



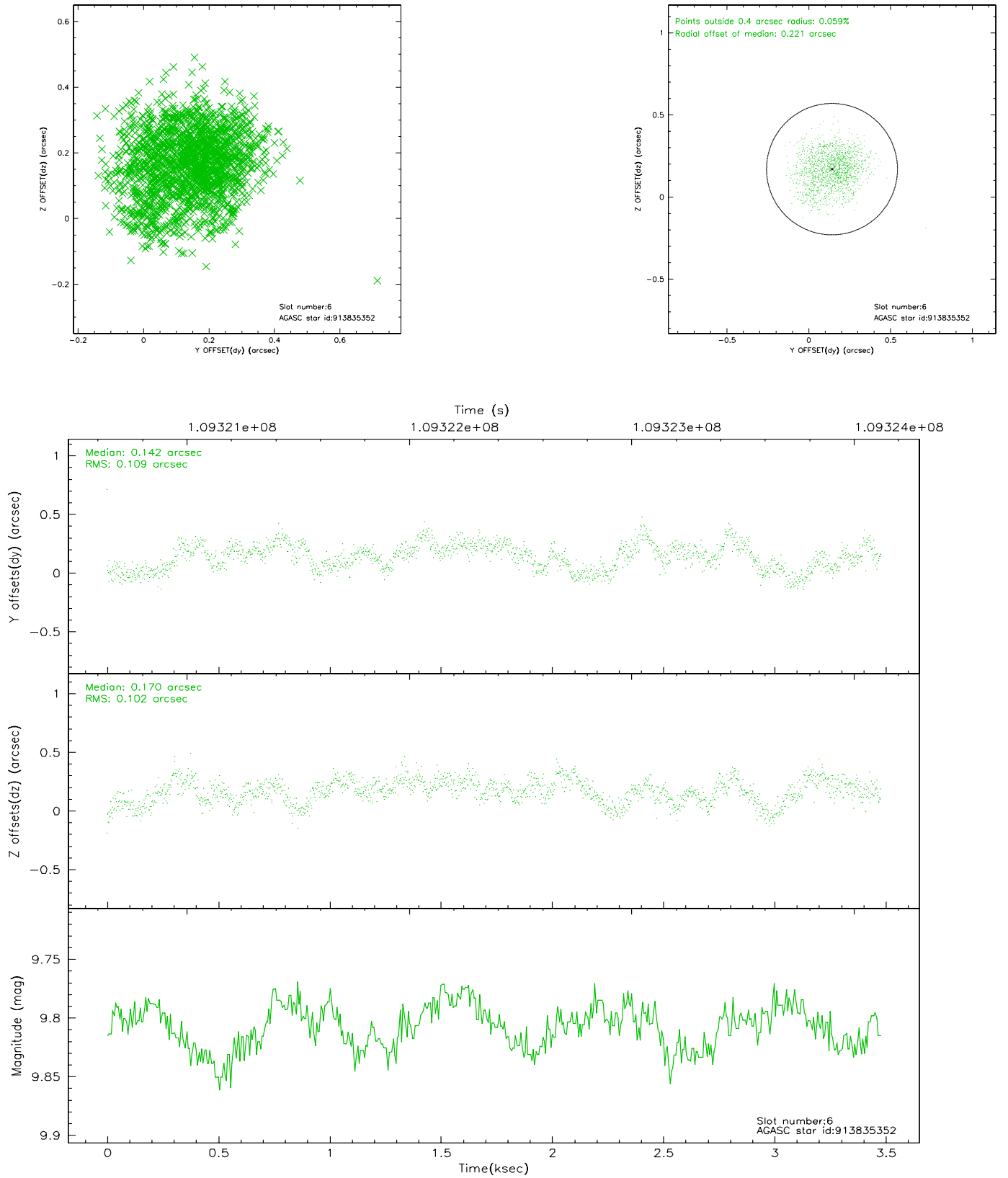
## 2.4.2 Slot 4



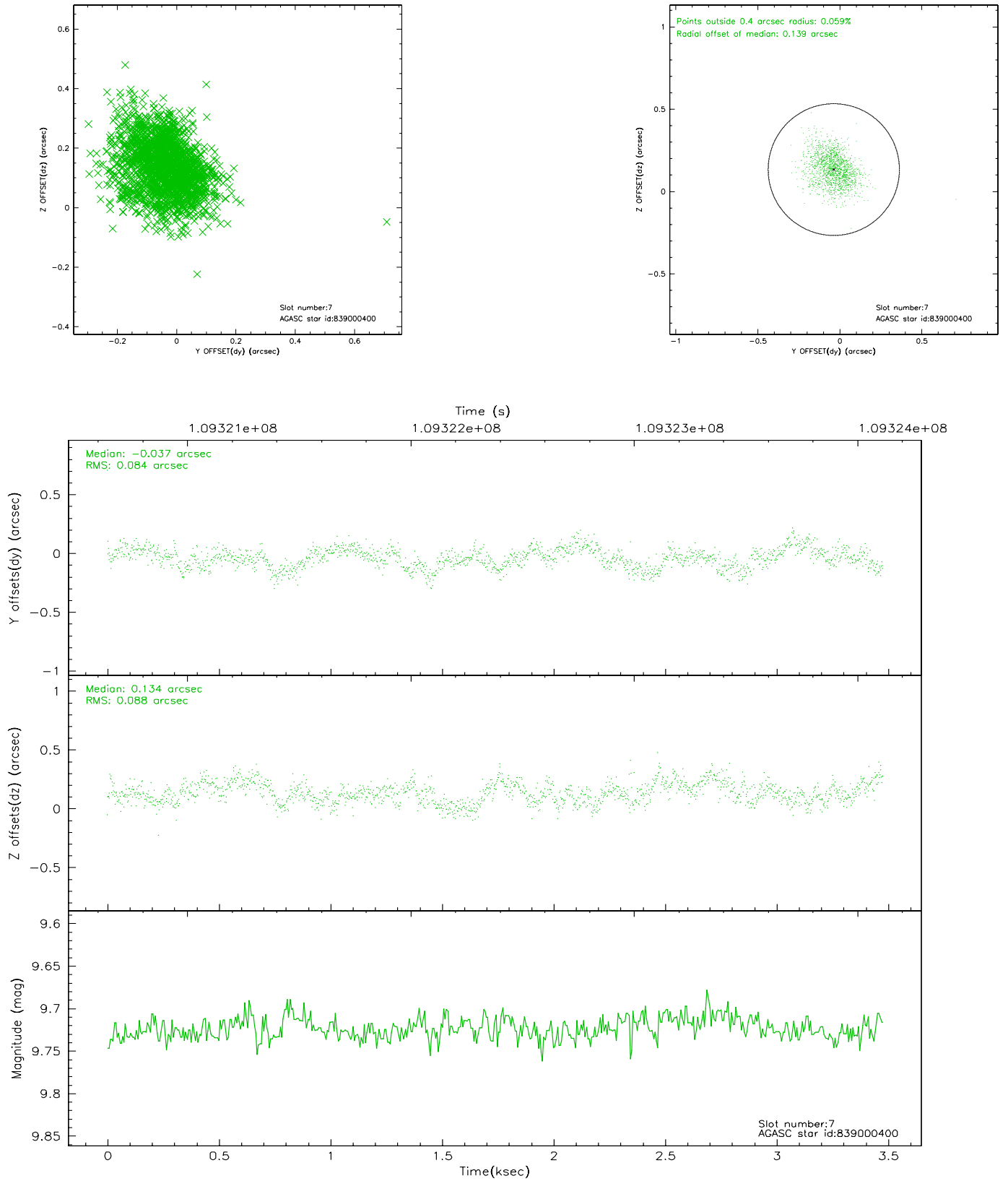
### 2.4.3 Slot 5



## 2.4.4 Slot 6

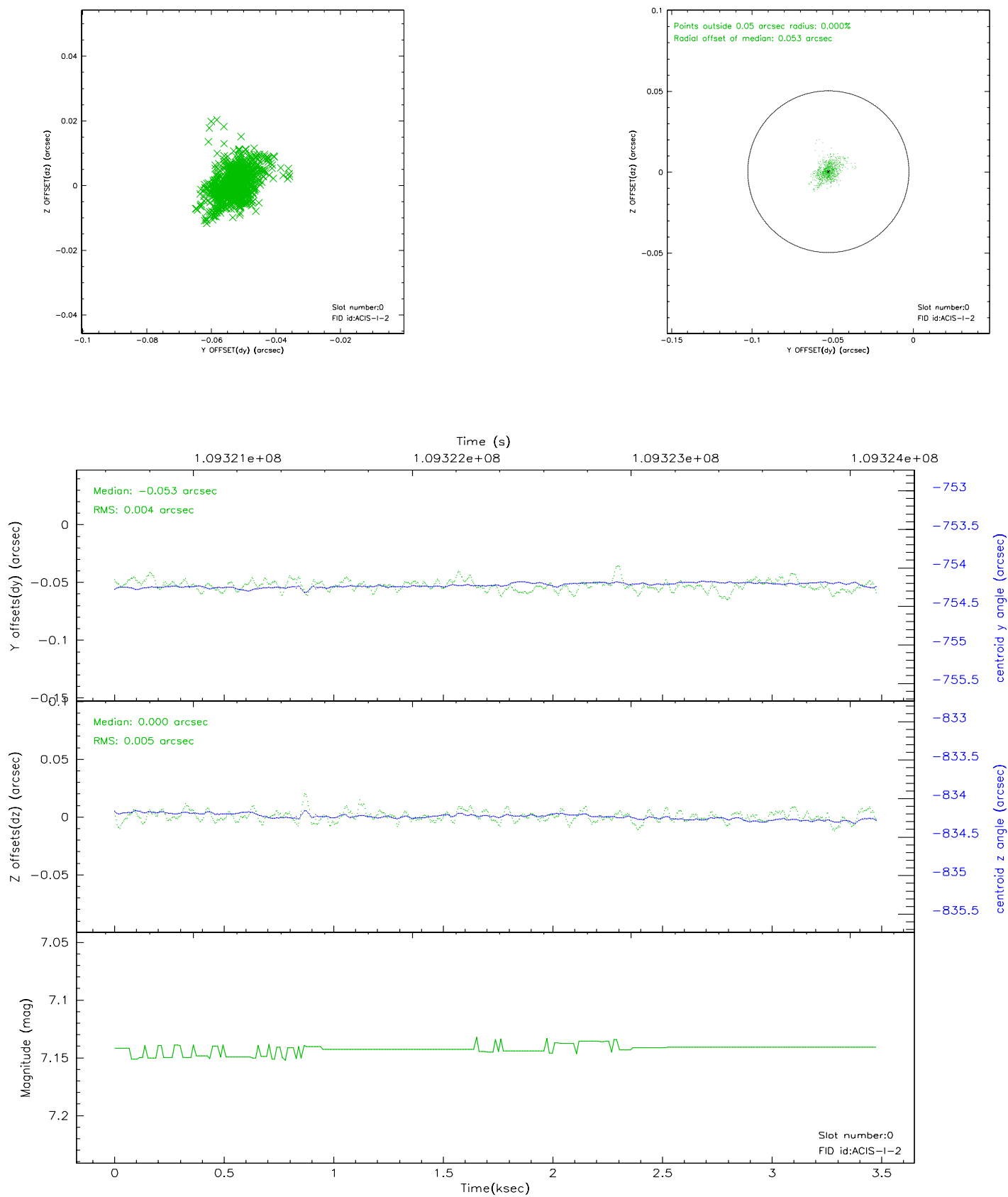


## 2.4.5 Slot 7

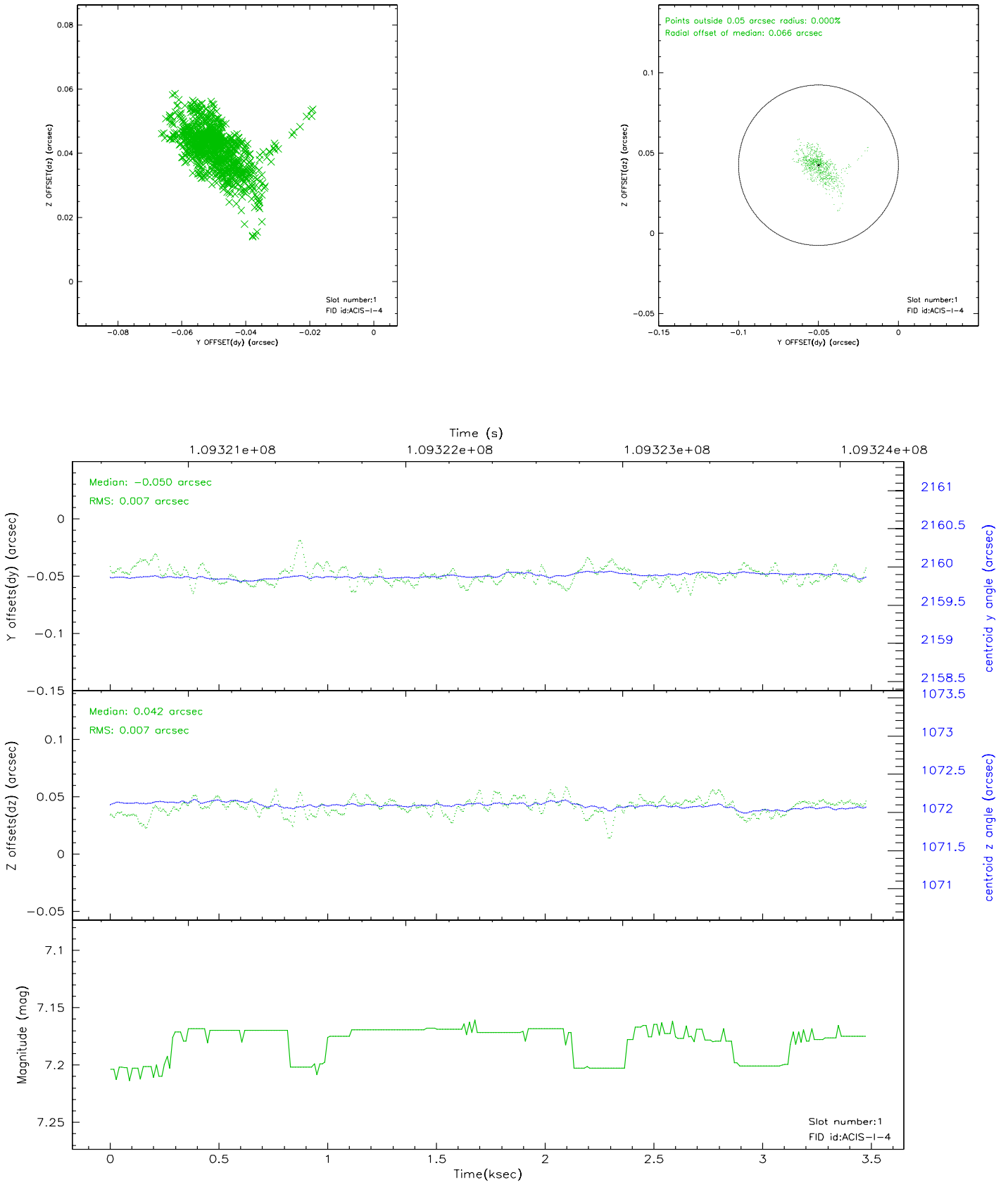


## 2.5 FID Slots

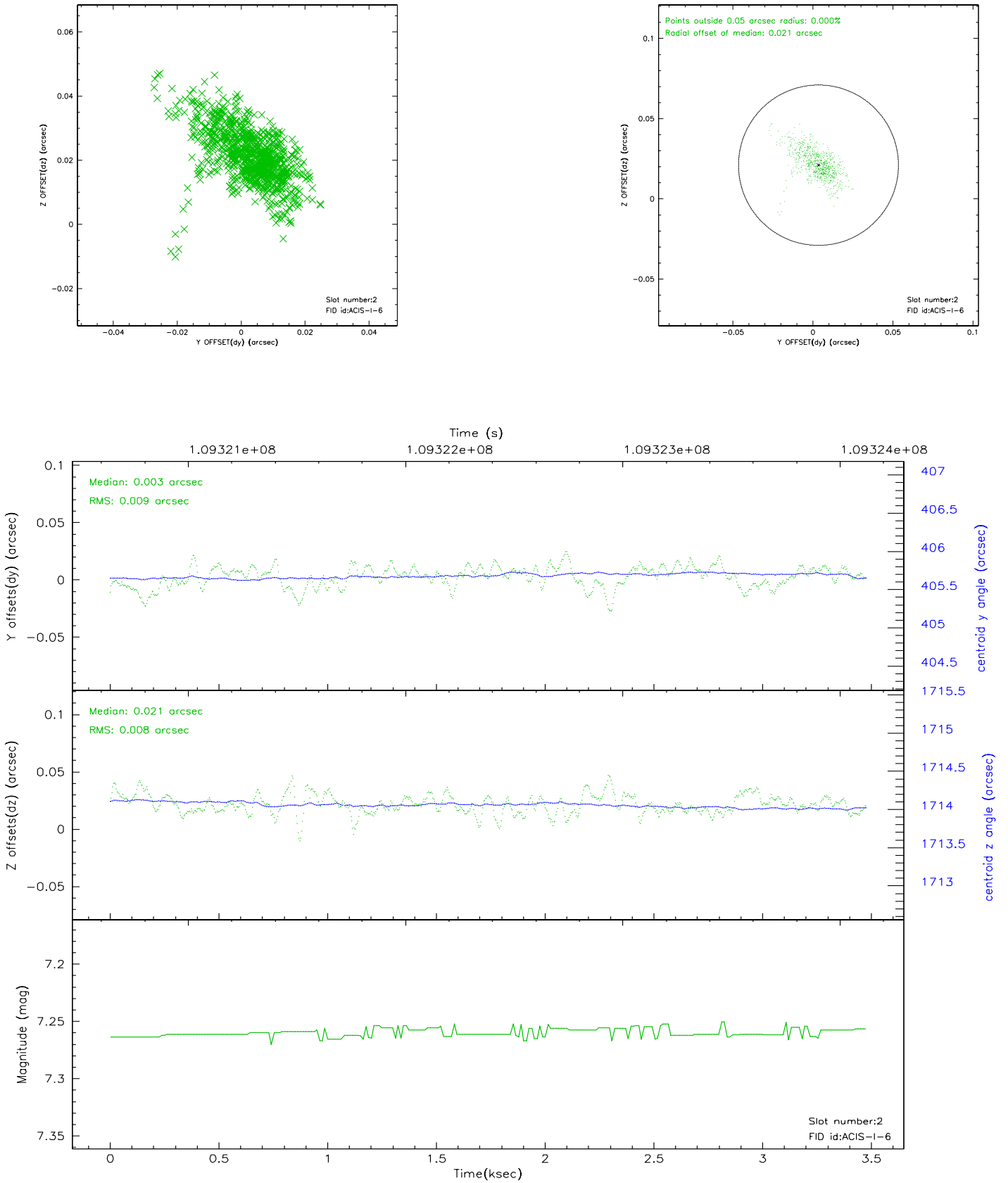
### 2.5.1 Slot 0



## 2.5.2 Slot 1

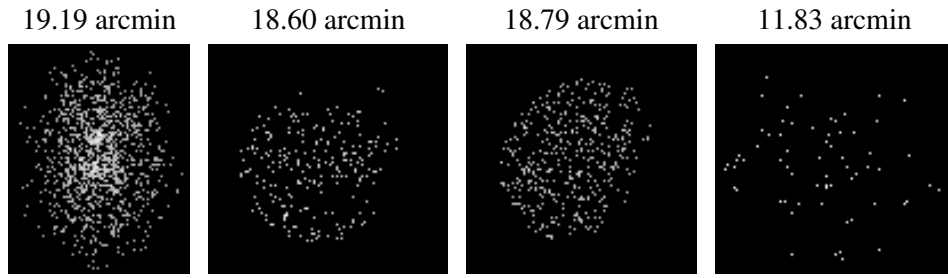


### 2.5.3 Slot 2





### 3 Point Sources



## A Summary

### A.1 Status

V&V Scientist	Beth Sundheim
V&V Date (YYYY-MM-DD)	2006.12.08
V&V Edition	1
V&V Disposition and Status	OK
V&V Charge Time	3.1

### A.2 Comments