

V&V Reference Report

L2 ASCDS Version : 7.6.9

Observation 2264 - L2 Version 001
Chandra X-Ray Center

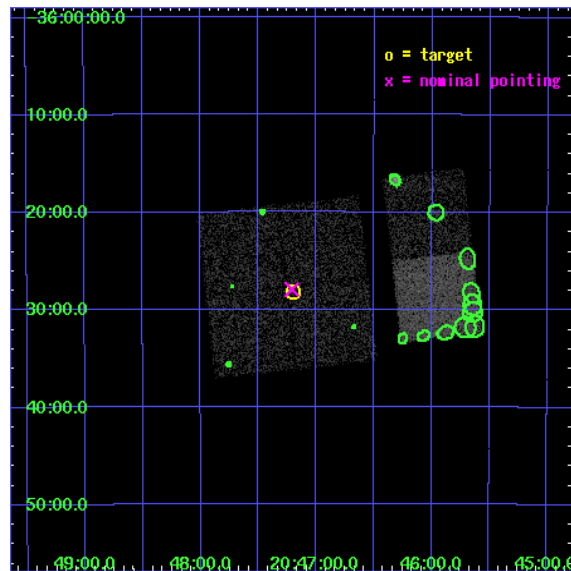
L2 Processing Date : Dec 8 2006

Contents

1	Front	2
2	OBI	3
2.1	OBI	3
2.1.1	Images	3
2.1.2	Bias	3
2.1.3	Parameters	4
2.1.4	Events	4
2.2	Compared Parameters	5
2.3	Aspect	6
2.4	Star Slots	9
2.4.1	Slot 3	9
2.4.2	Slot 4	10
2.4.3	Slot 5	11
2.4.4	Slot 6	12
2.4.5	Slot 7	13
2.5	FID Slots	14
2.5.1	Slot 0	14
2.5.2	Slot 1	15
2.5.3	Slot 2	16
3	Point Sources	17
A	Summary	18
A.1	Status	18
A.2	Comments	18

1 Front

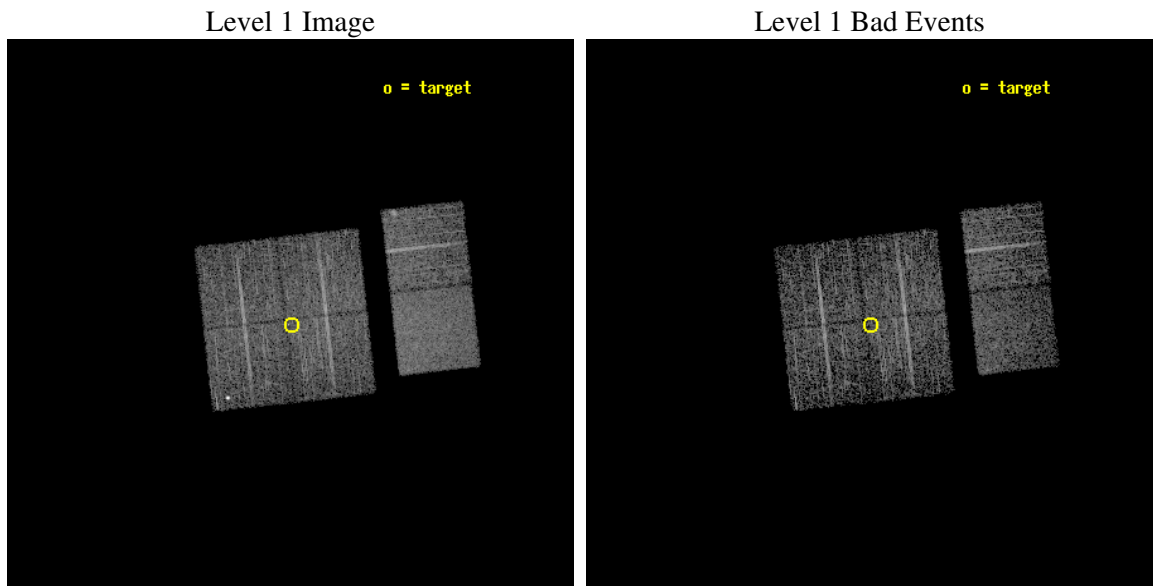
seq_num	900091
obs_id	2264
title	CHANDRA OBSERVATION OF HARD X-RAY SOURCES DISCOVERED WITH ASCA
observer	Dr Yoshihiro Ueda
object	AGX~J204711-3628
dtcycle	0
cycle	P
ra_targ	311.799583
dec_targ	-36.47
ra_nom	311.80255740212
dec_nom	-36.465727512004
roll_nom	83.633216350458
revision	2
ontime	3948.7590434253
livetime	3898.7574787602
ontime0	3952.0000036806
ontime1	3952.0000036806
ontime2	3952.0000036806
ontime3	3948.7590434253
ontime6	3952.0000036806
ontime7	3952.0000036806
l2events	29115



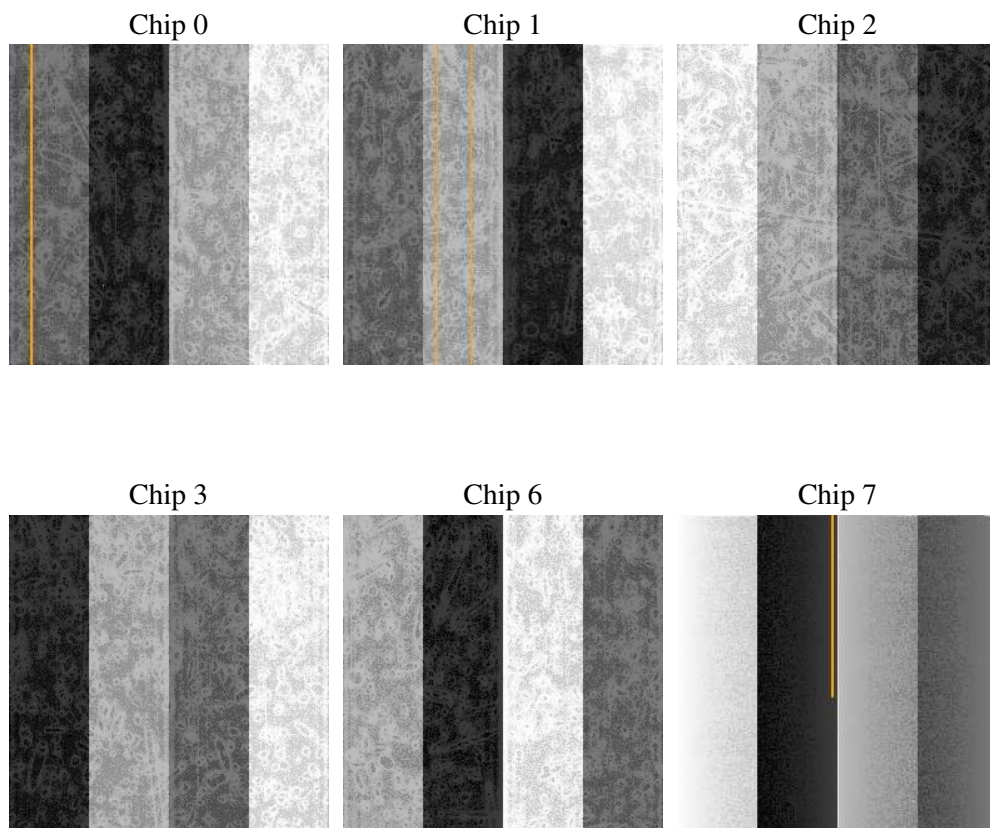
2 OBI

2.1 OBI

2.1.1 Images



2.1.2 Bias



2.1.3 Parameters

obi_num	0
ascdsver	7.6.9
caldsver	3.2.4
date	2006-12-08T07:04:38
revision	2

sched_exp_time	4000.000000
ontime	3954.0222241879
ontime0	3957.2631844431
ontime1	3957.2631844431
ontime2	3957.2631645203
ontime3	3954.0222241879
ontime6	3957.2631645203
ontime7	3957.2631844431
l1events	171996

2.1.4 Events

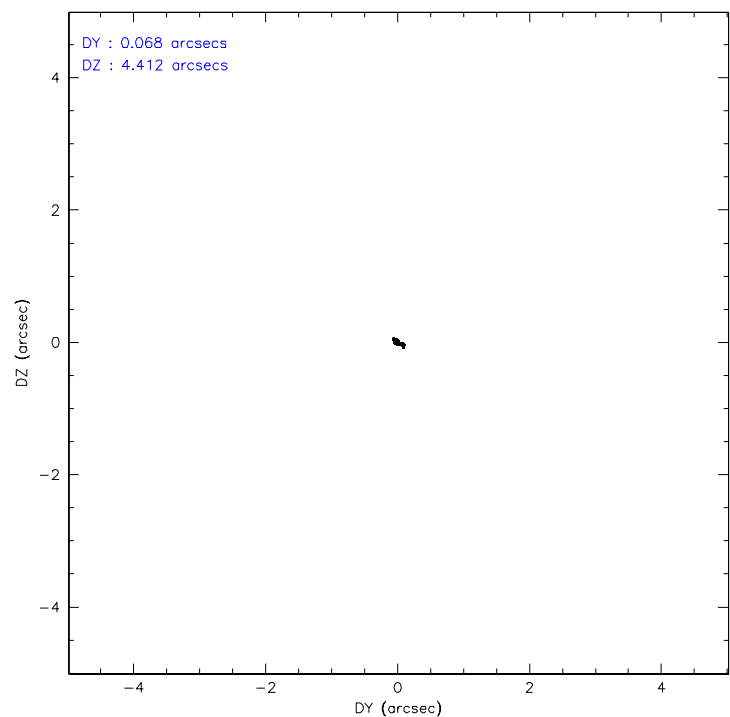
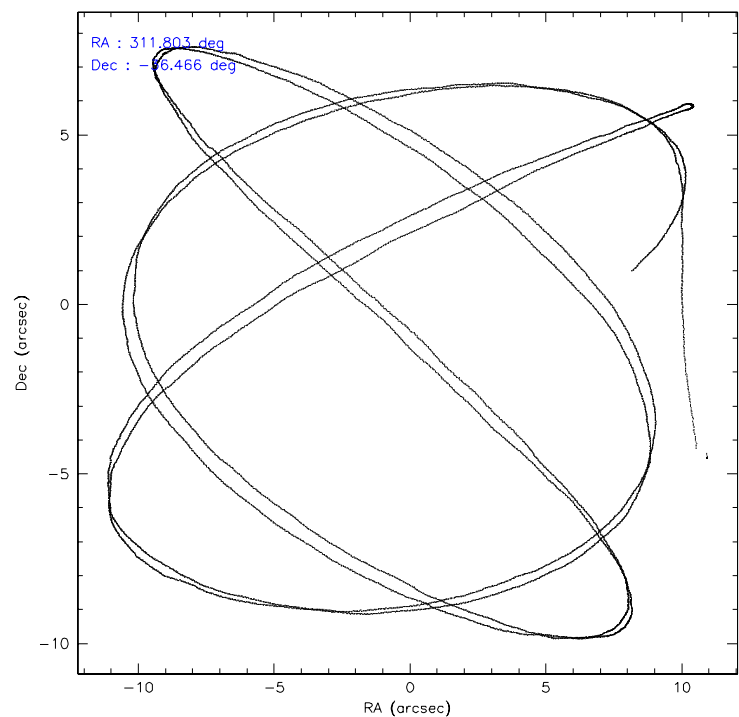
	ccd 0	ccd 1	ccd 2	ccd 3	ccd 6	ccd 7
level 1 events	25177	27101	28603	27362	29518	34235
rejected events	21847	22106	25422	24083	25813	20828
rejected %	86%	81%	88%	88%	87%	60%

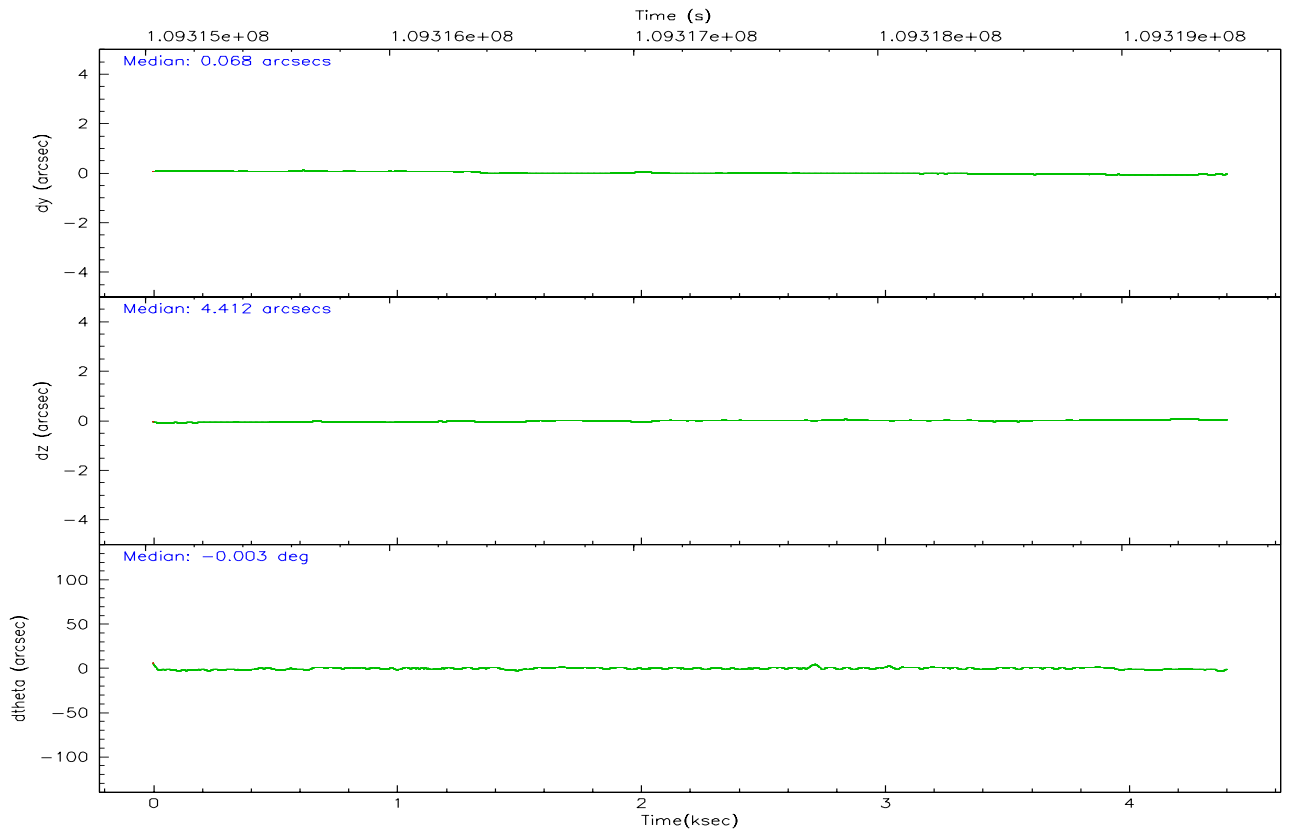
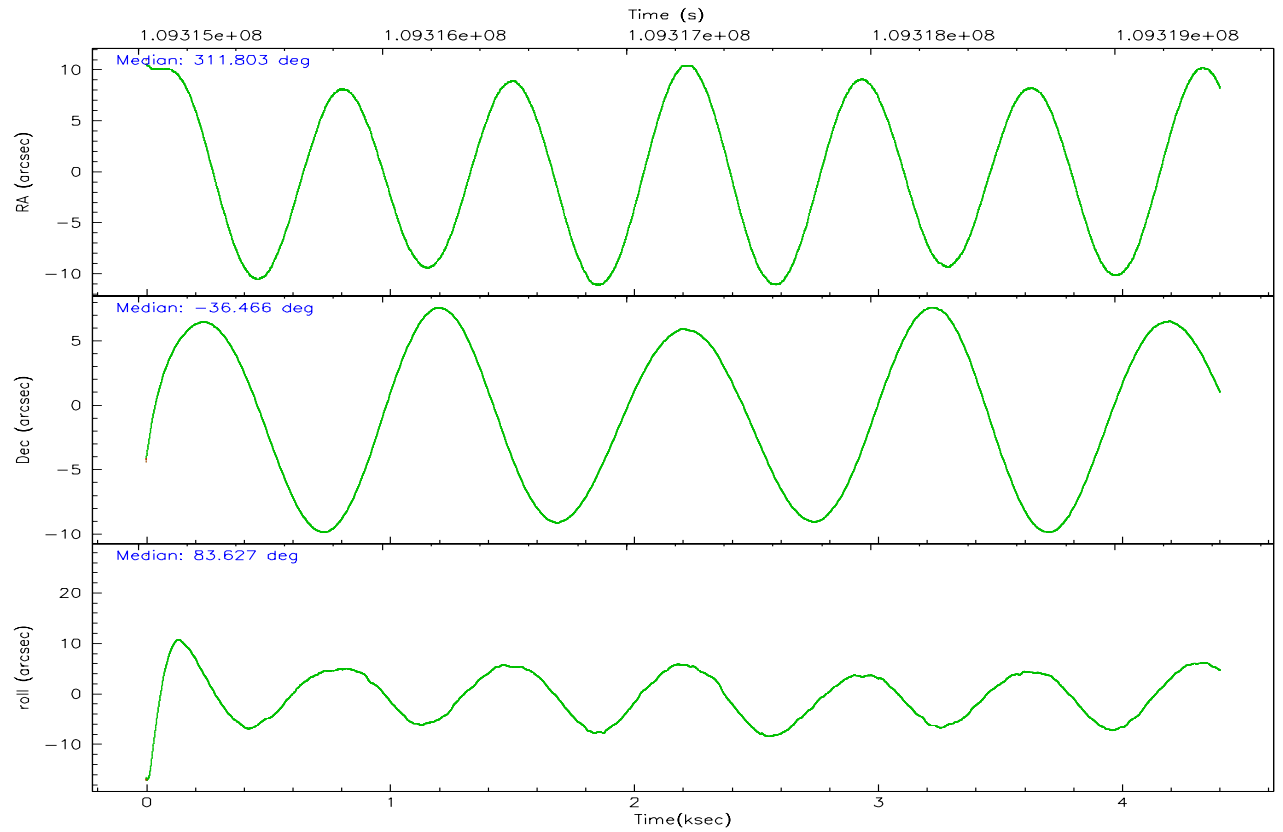
	ccd 0	ccd 1	ccd 2	ccd 3	ccd 6	ccd 7
grade 0 events	1475	2785	1402	1498	1750	810
	5%	10%	4%	5%	5%	2%
grade 1 events	15	26	15	13	13	21
	0%	0%	0%	0%	0%	0%
grade 2 events	650	808	683	651	719	3359
	2%	2%	2%	2%	2%	9%
grade 3 events	317	402	288	309	295	689
	1%	1%	1%	1%	0%	2%
grade 4 events	304	394	282	284	305	653
	1%	1%	0%	1%	1%	1%
grade 5 events	931	988	881	954	1123	2203
	3%	3%	3%	3%	3%	6%
grade 6 events	589	607	527	540	642	7908
	2%	2%	1%	1%	2%	23%
grade 7 events	20896	21091	24525	23113	24671	18592
	82%	77%	85%	84%	83%	54%

2.2 Compared Parameters

Parameter	Planned	Actual	Parameter	Planned	Actual
Instrument	ACIS	ACIS	Obspar format version number	6	6
Detector	ACIS-012367	ACIS-012367	Obspar file type	PREDICTED	ACTUAL
Grating	NONE	NONE	Obspar update status	NONE	UPDATED
Data mode	FAINT	FAINT	Number of optional ACIS chips dropped	0	0
Observation mode	POINTING	POINTING	On-chip summing requested	N	N
Pointing RA	311.816189	311.8025574021248	Subarray requested	NONE	NONE
Pointing Dec	-36.490993	-36.46572751200416	Alternating exposures requested	N	N
Pointing Roll	83.432701	83.63321635045845	Primary exposure time	0.000000	3.2
SIM focus pos (mm)	-0.782348	-0.7809083437167272			
SIM defocus (mm)	0	0.001439871863259334			
SIM translation stage pos (mm)	-233.592463	-233.5874344608287			
SIM translation stage offset (mm)	0	-0.005018542100998502			
Observation start time	109315433.184000	109314370.40443			
Observation start date	2001-06-19T05:22:49	2001-06-19T05:06:10			
Observation end time	109319433.184000	109320004.31715			
Observation end date	2001-06-19T06:29:29	2001-06-19T06:40:04			
Read mode	TIMED	TIMED			

2.3 Aspect



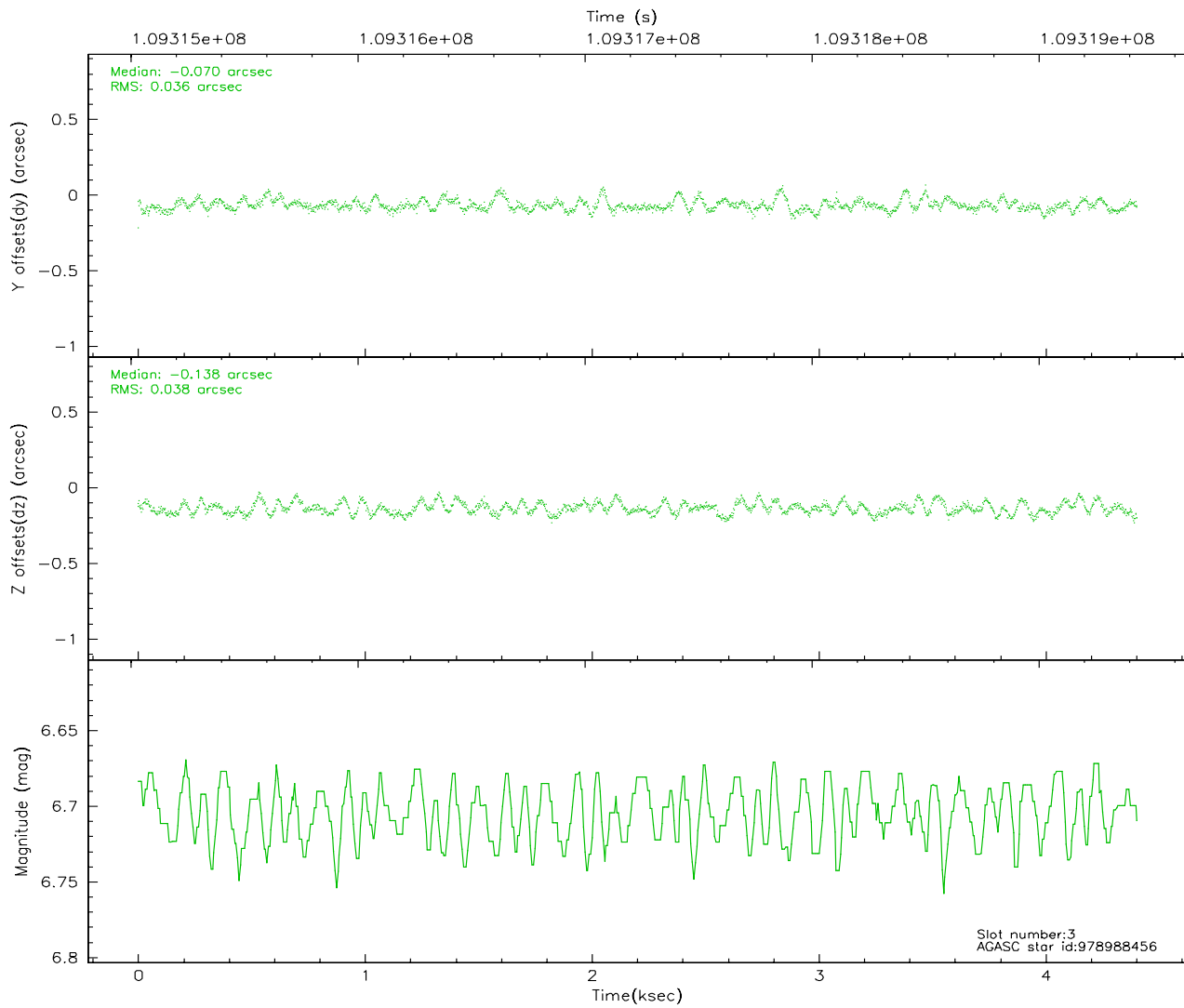
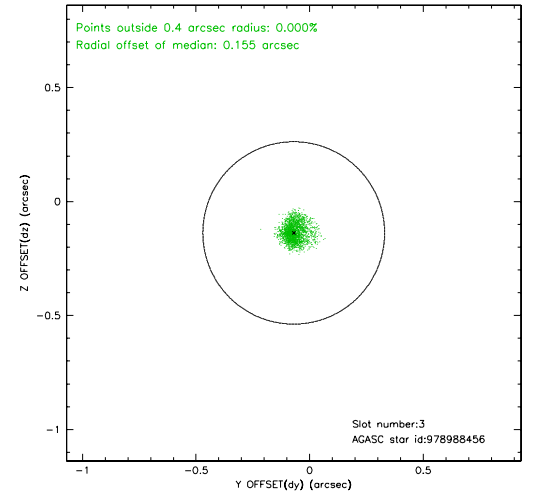
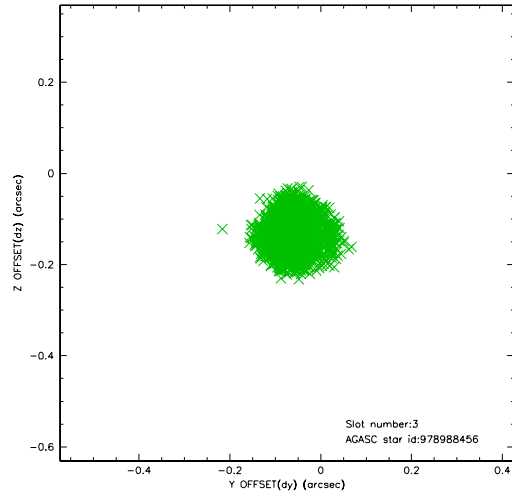


Slot Statistics

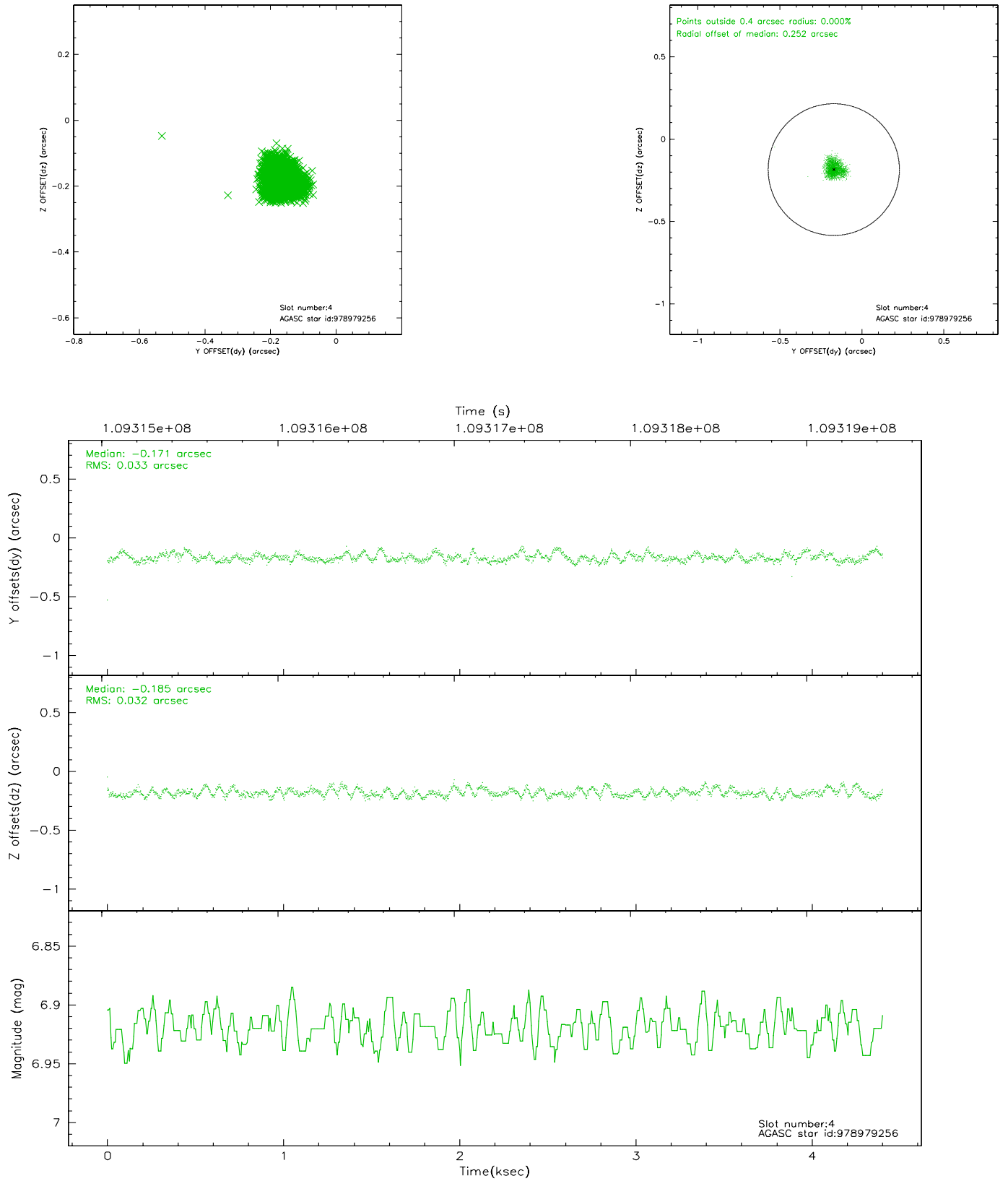
slot	status	id	mag	n_pts	med_dy	med_dz	dr1	dr2	ra	dec	mean_y	mean_z
0	FID	ACIS-I-2	7.14	1071	-0.025	-0.017	0.010	0.020	0.000000	0.000000	-754.39	-834.12
1	FID	ACIS-I-4	7.19	1073	-0.033	0.028	0.007	0.013	0.000000	0.000000	2159.01	1071.42
2	FID	ACIS-I-5	7.23	1075	-0.043	0.058	0.010	0.018	0.000000	0.000000	-1806.45	1070.87
3	GUIDE	978988456	6.70	2149	-0.070	-0.138	0.055	0.091	311.577530	-36.120150	1245.78	842.13
4	GUIDE	978979256	6.92	2148	-0.171	-0.185	0.048	0.076	311.170573	-35.827550	2151.17	2145.19
5	GUIDE	978982864	8.35	2141	0.192	-0.004	0.051	0.083	311.499492	-37.036400	-2055.10	680.33
6	GUIDE	978985320	8.44	2146	0.056	0.134	0.058	0.097	312.286798	-36.485223	172.31	-1350.51
7	GUIDE	978984776	9.21	2144	-0.016	0.193	0.071	0.113	312.354186	-36.265308	981.60	-1459.18

2.4 Star Slots

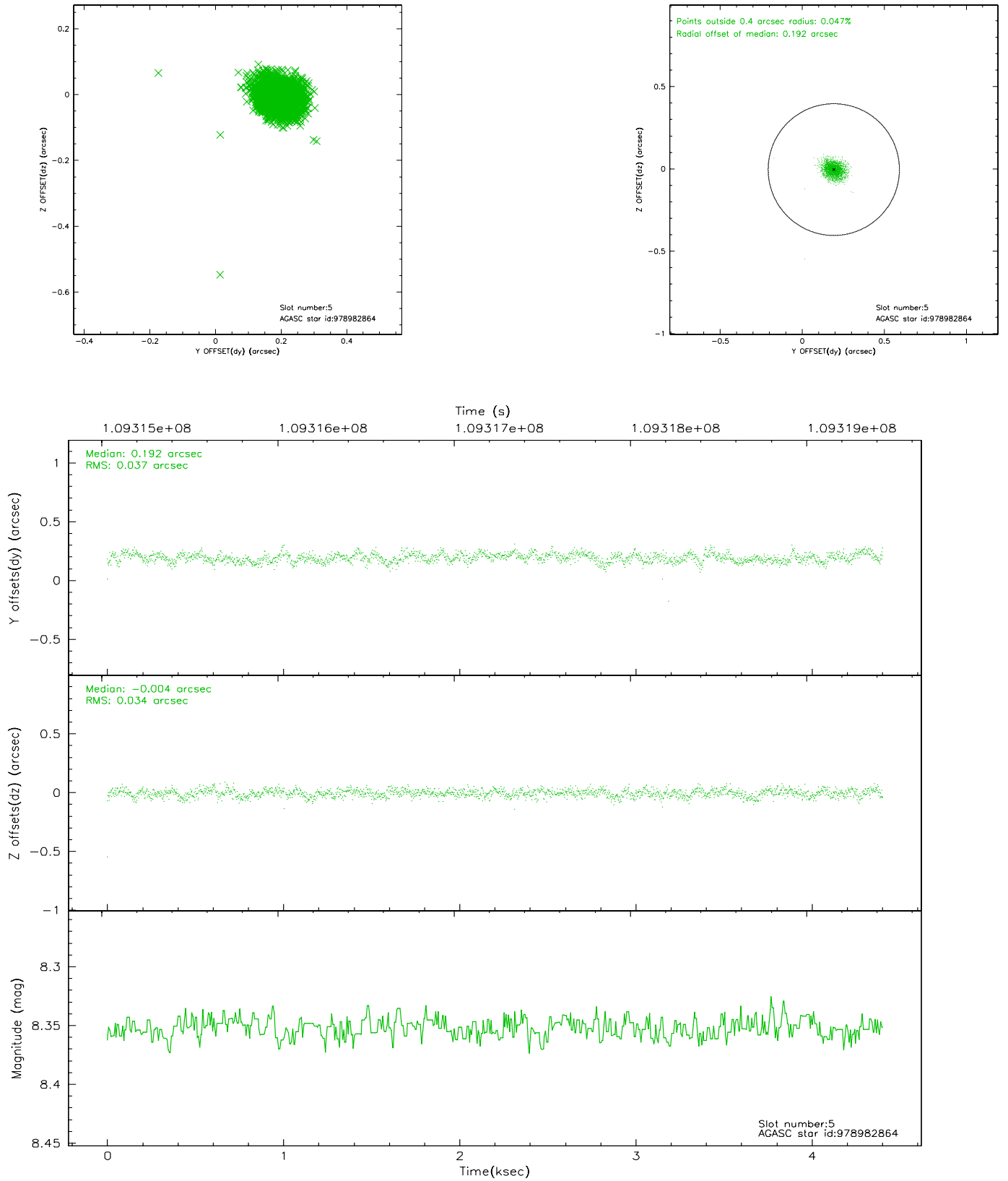
2.4.1 Slot 3



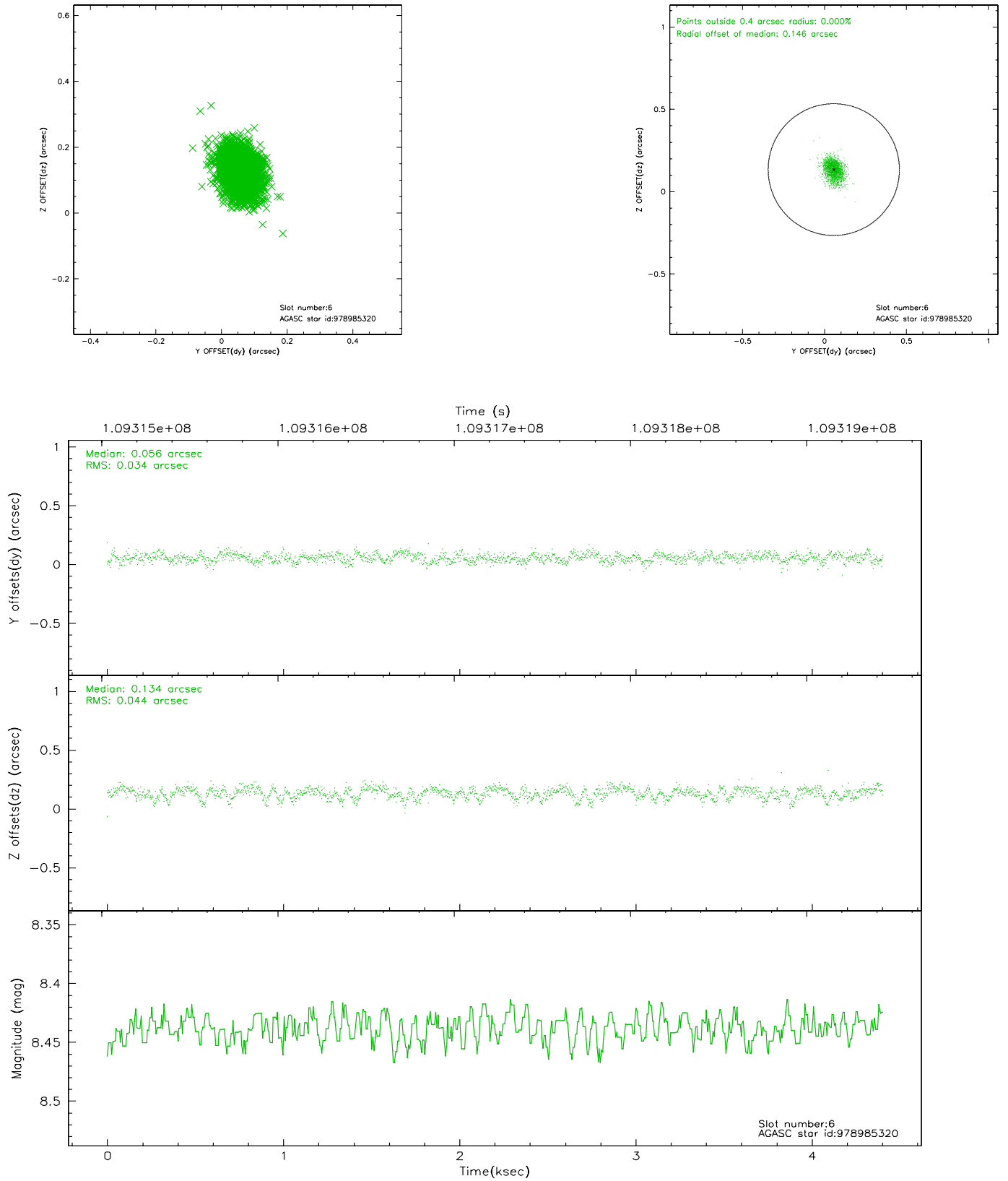
2.4.2 Slot 4



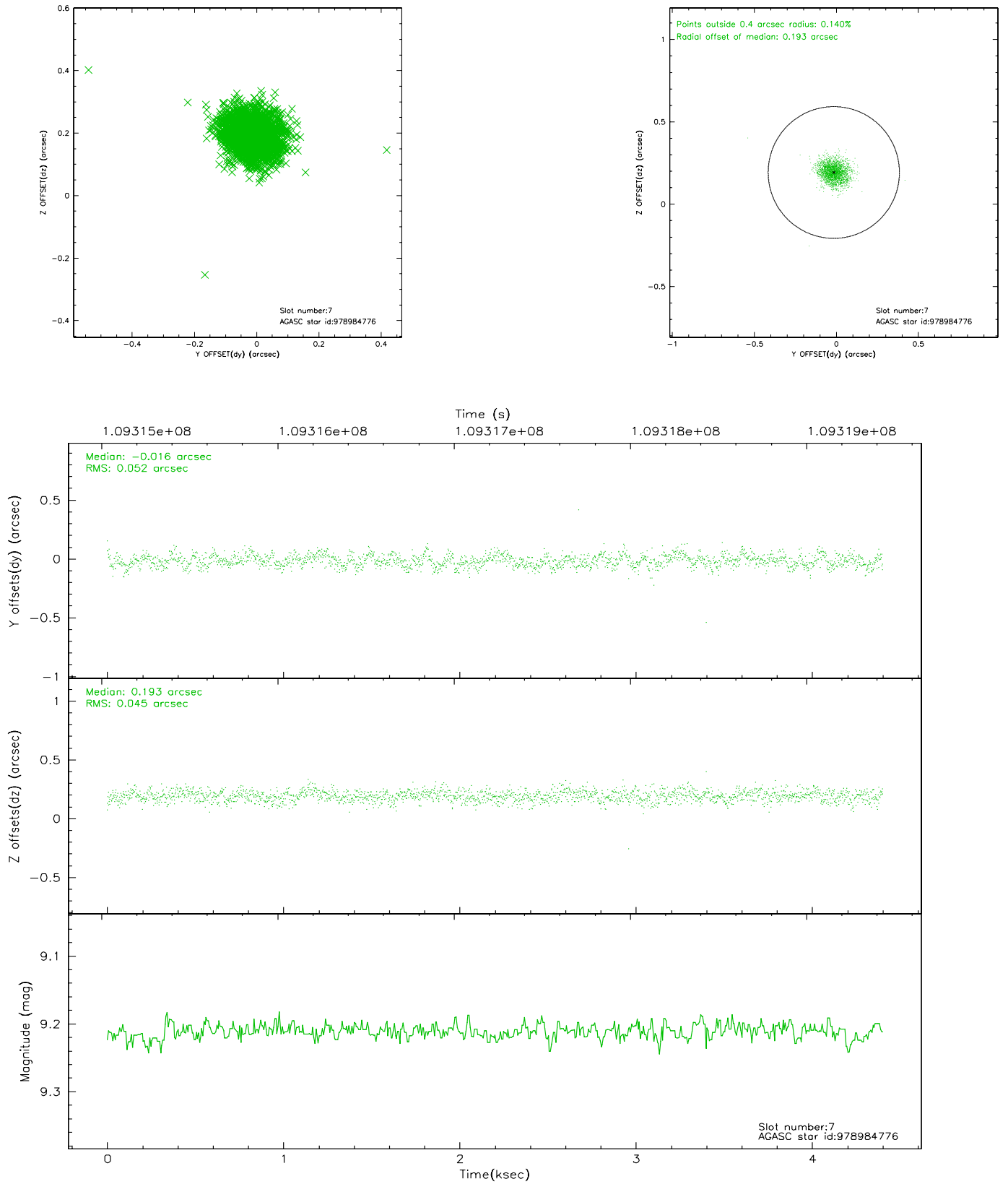
2.4.3 Slot 5



2.4.4 Slot 6

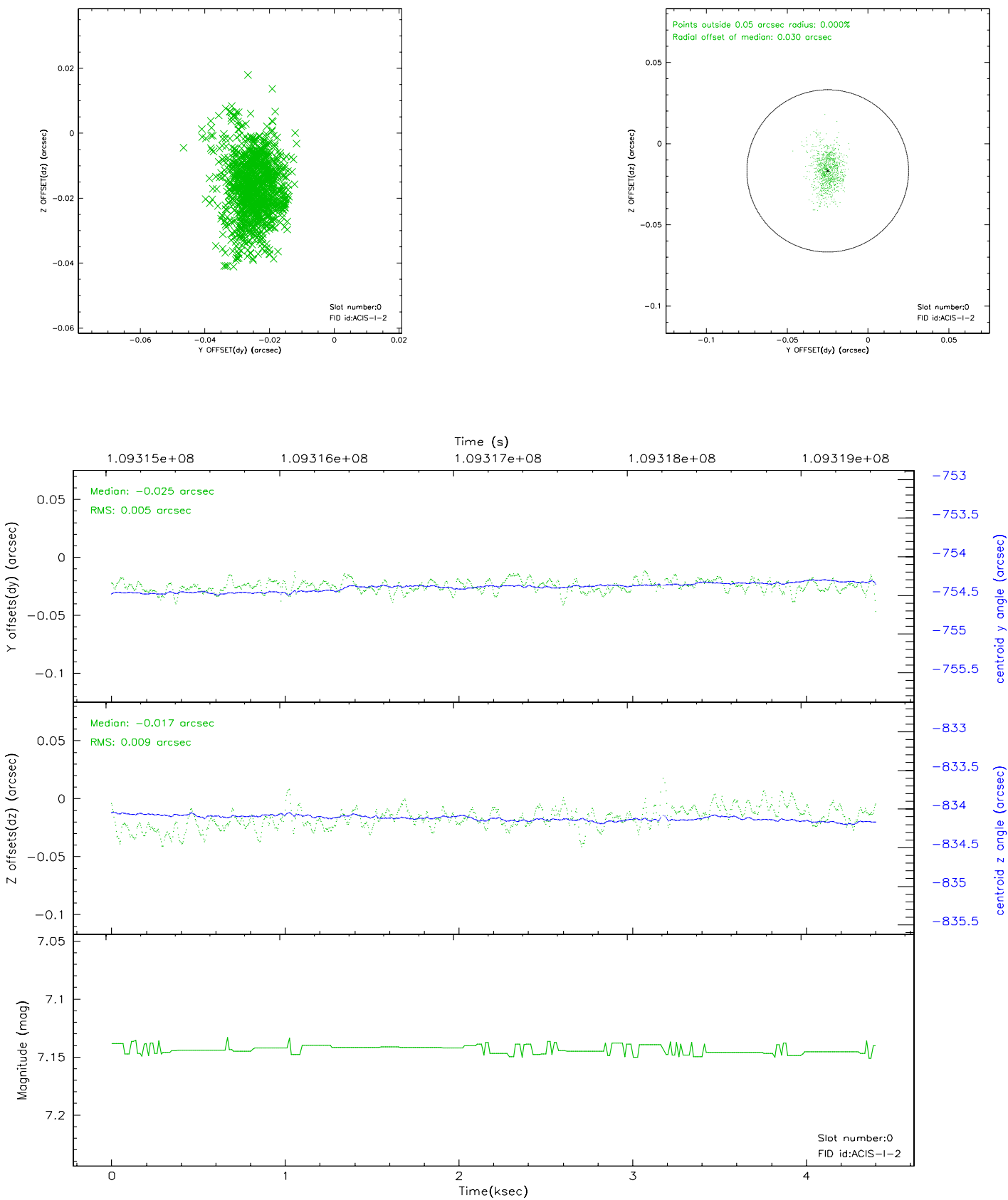


2.4.5 Slot 7

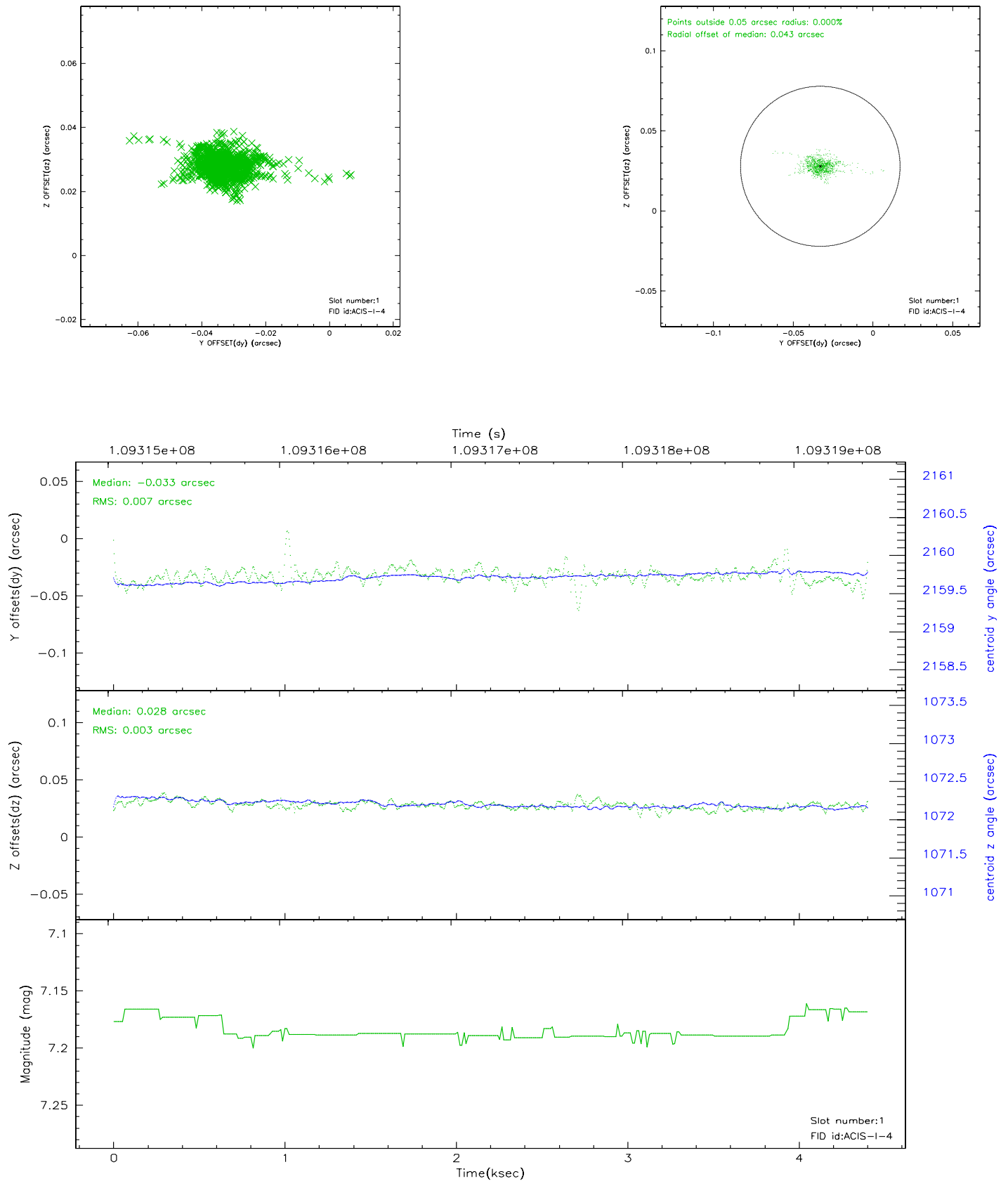


2.5 FID Slots

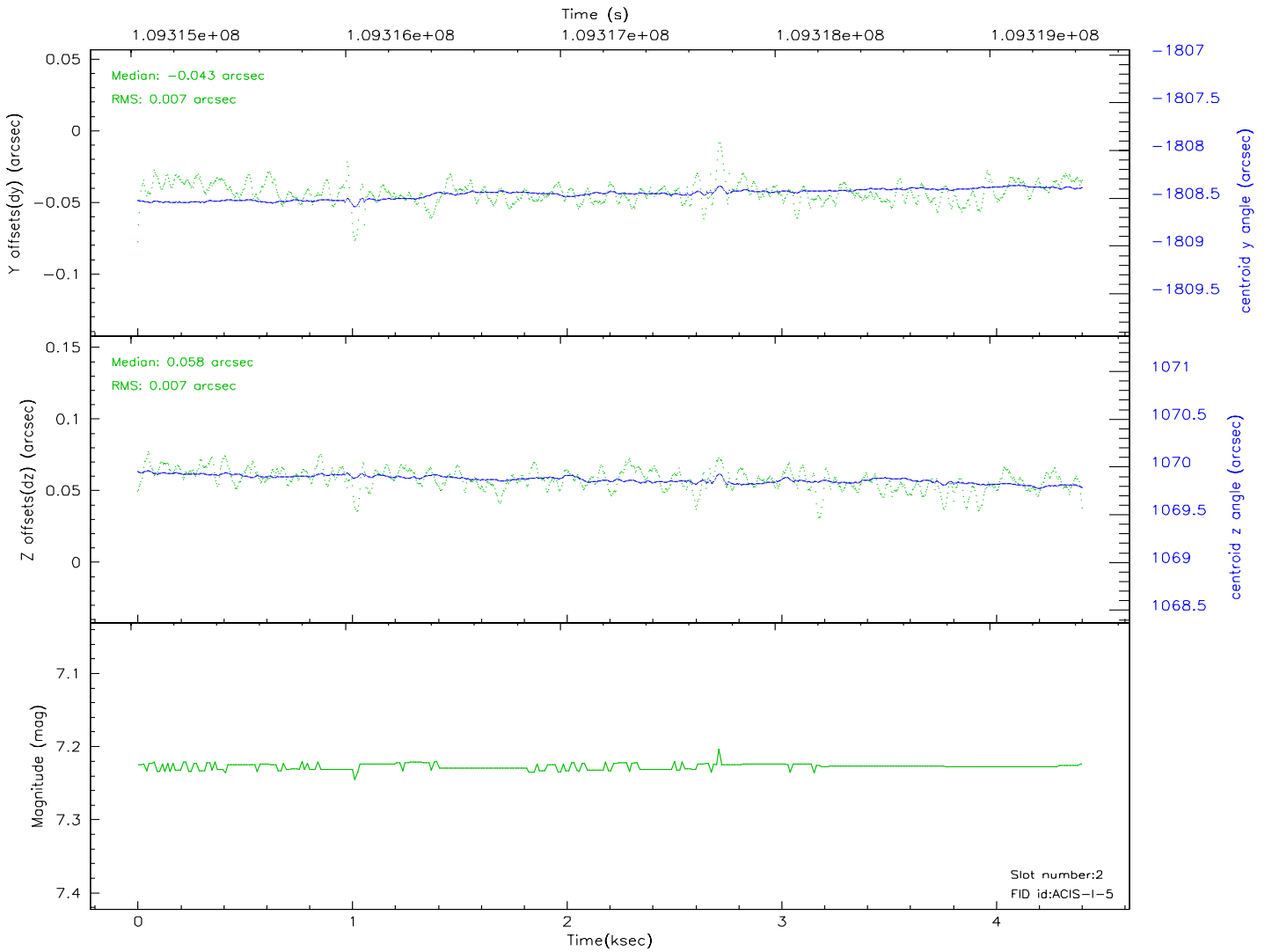
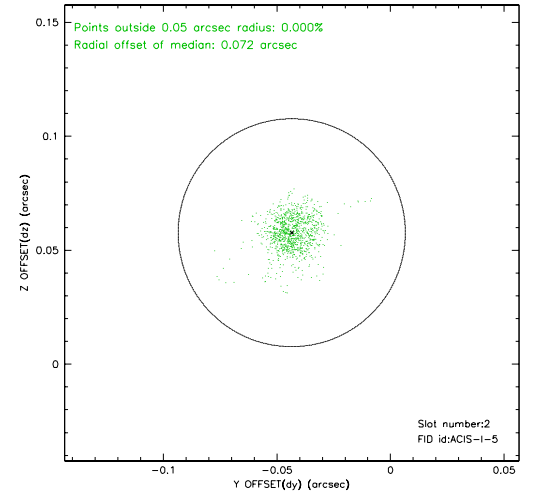
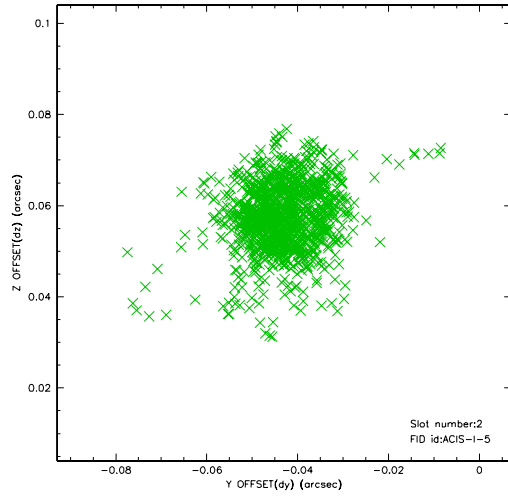
2.5.1 Slot 0



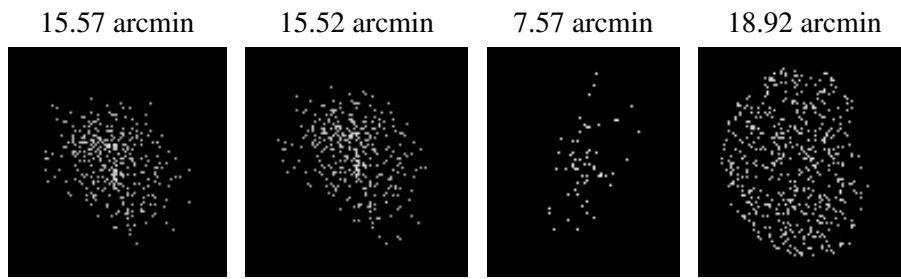
2.5.2 Slot 1



2.5.3 Slot 2



3 Point Sources



A Summary

A.1 Status

V&V Scientist	Beth Sundheim
V&V Date (YYYY-MM-DD)	2006.12.08
V&V Edition	1
V&V Disposition and Status	OK
V&V Charge Time	3.948

A.2 Comments