

V&V Reference Report

L2 ASCDS Version : 8.4.5

Observation 2262 - L2 Version 3
Chandra X-Ray Center

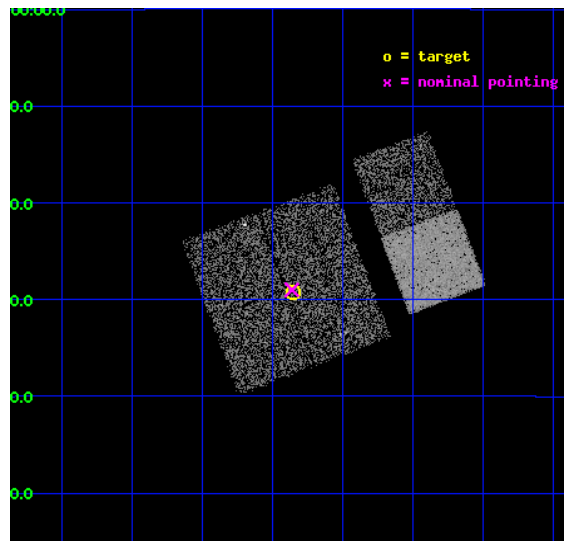
L2 Processing Date : Sep 6 2012

Contents

1	Front	2
2	OBI	3
2.1	OBI	3
2.1.1	Images	3
2.1.2	Bias	3
2.1.3	Parameters	4
2.1.4	Events	4
2.2	Compared Parameters	5
2.3	Aspect	6
2.4	Star Slots	9
2.4.1	Slot 3	9
2.4.2	Slot 4	10
2.4.3	Slot 5	11
2.4.4	Slot 6	12
2.4.5	Slot 7	13
2.5	FID Slots	14
2.5.1	Slot 0	14
2.5.2	Slot 1	15
2.5.3	Slot 2	16
A	Summary	17
A.1	Status	17
A.2	Comments	17

1 Front

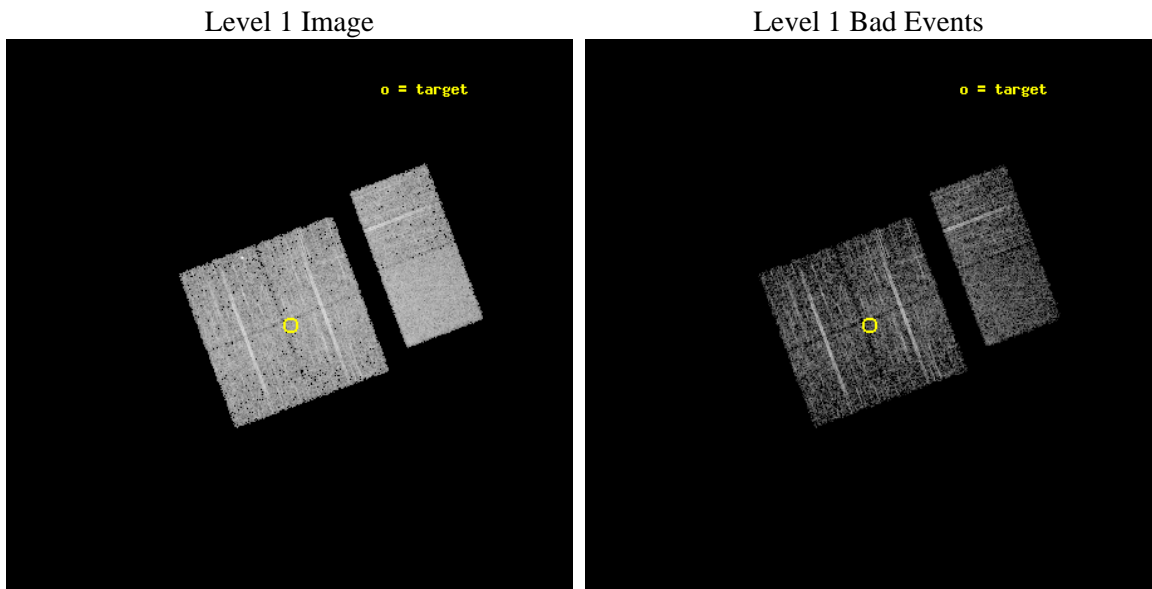
seq_num	900089	Sequence number
obs_id	2262	Observation id
title	CHANDRA OBSERVATION OF HARD X-RAY SOURCES DISCOVERED WITH ASCA	Pro
observer	Dr Yoshihiro Ueda	Principal investigator
object	AGX~J134720-1129	Source name
dtcycle	0	
cycle	P	events from which exps? Prim/Second/Both
ra_targ	206.837083	Observer's specified target RA [deg]
dec_targ	-11.486889	Observer's specified target Dec [deg]
ra_nom	206.84047252483	Nominal RA [deg]
dec_nom	-11.48343246282	Nominal Dec [deg]
roll_nom	69.455647263344	Nominal Roll [deg]
revision	3	Processing version of data
ontime	4752.0000044107	Sum of GTIs [s]
livetime	4691.827319044	Livetime [s]
ontime0	4752.0000044107	Sum of GTIs [s]
ontime1	4748.7590142488	Sum of GTIs [s]
ontime2	4752.0000044107	Sum of GTIs [s]
ontime3	4752.0000044107	Sum of GTIs [s]
ontime6	4752.0000044107	Sum of GTIs [s]
ontime7	4752.0000044107	Sum of GTIs [s]
l2events	28869	Number of level 2 events



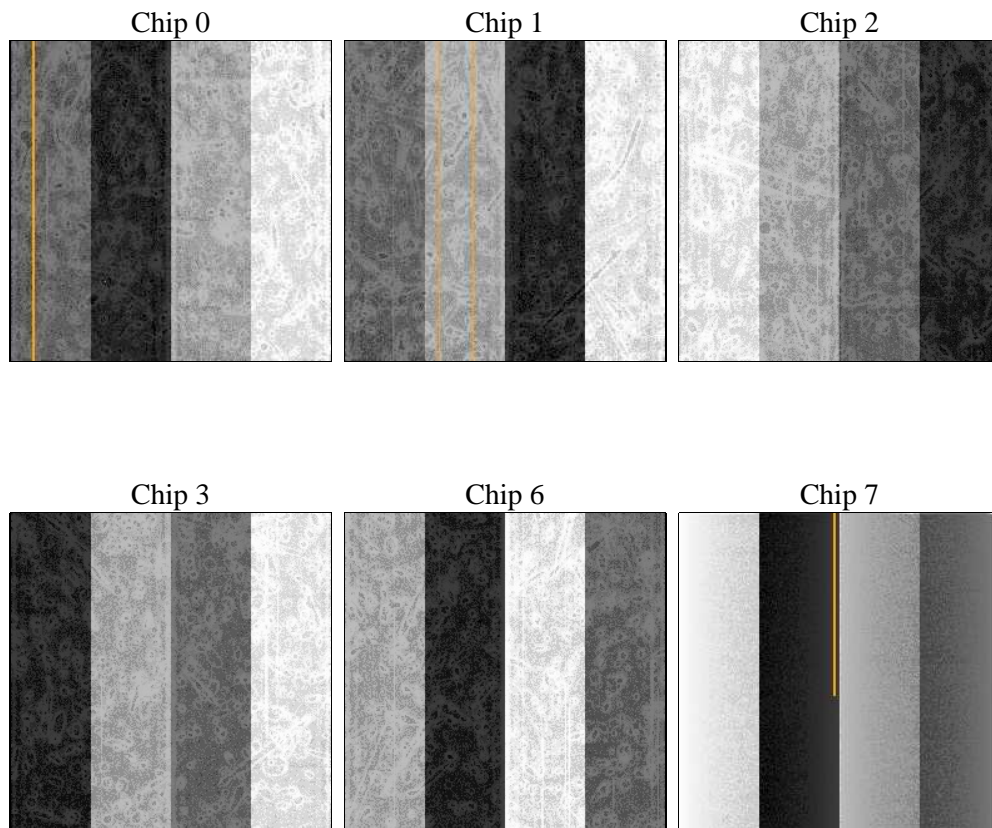
2 OBI

2.1 OBI

2.1.1 Images



2.1.2 Bias



2.1.3 Parameters

obi_num	0	Obi number	sched_exp_time	4800.000000	[s] Scheduled observation exposure time
ascdsver	8.4.5	Processing system revision	ontime	4752.0000044107	Sum of GTIs [s]
caldsver	4.5.1.1	 	ontime0	4752.0000044107	Sum of GTIs [s]
date	2012-09-06T09:25:57	Date and time of file creation	ontime1	4748.7590142488	Sum of GTIs [s]
revision	3	Processing version of data	ontime2	4752.0000044107	Sum of GTIs [s]
			ontime3	4752.0000044107	Sum of GTIs [s]
			ontime6	4752.0000044107	Sum of GTIs [s]
			ontime7	4752.0000044107	Sum of GTIs [s]
			l1events	174304	Number of level 1 events

2.1.4 Events

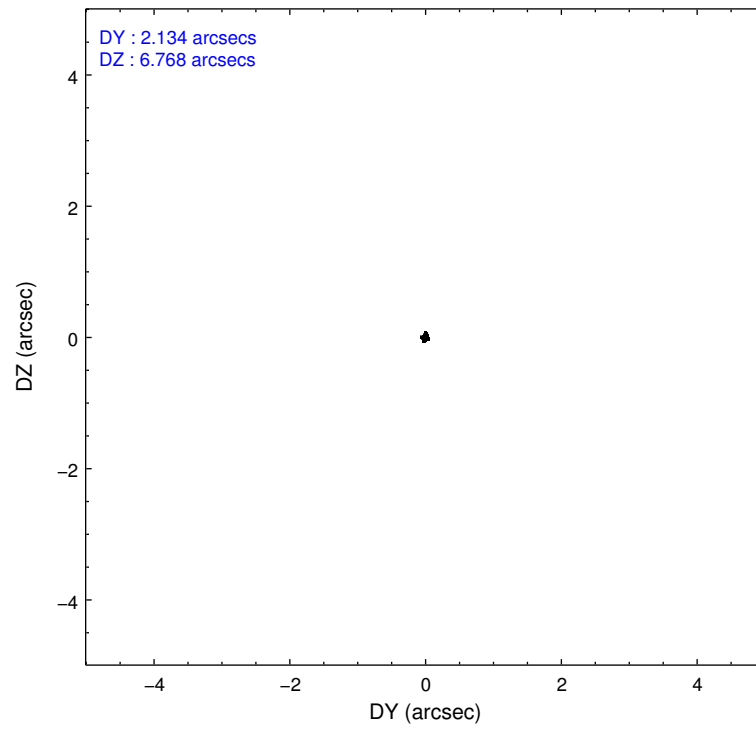
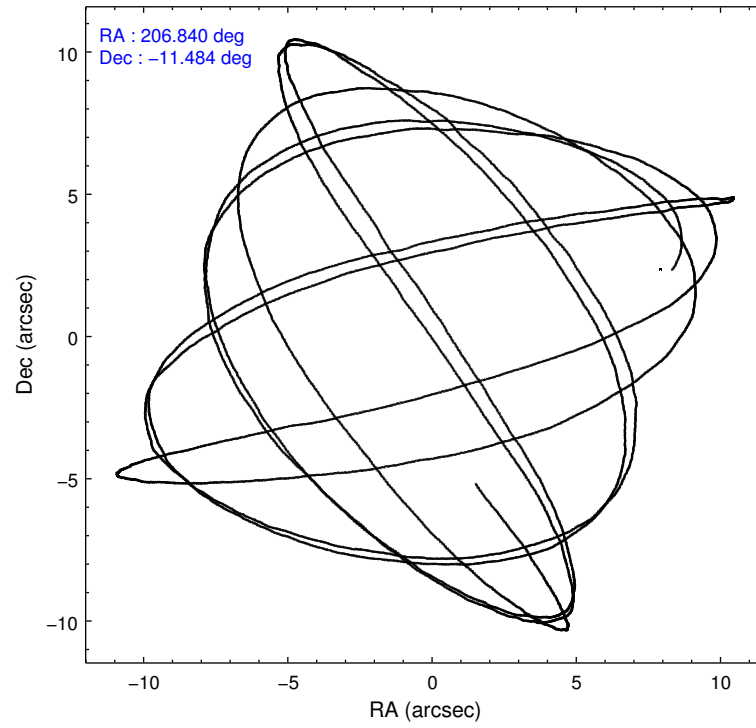
	ccd 0	ccd 1	ccd 2	ccd 3	ccd 6	ccd 7		ccd 0	ccd 1	ccd 2	ccd 3	ccd 6	ccd 7
level 1 events	26274	25376	28438	28777	29557	35882	grade 0 events	1657	1386	1387	1489	1322	1472
rejected events	22680	21991	25210	25503	26270	21065		6%	5%	4%	5%	4%	4%
rejected %	86%	86%	88%	88%	88%	58%	grade 1 events	9	12	18	15	16	26
								0%	0%	0%	0%	0%	0%
							grade 2 events	741	682	705	590	652	2932
								2%	2%	2%	2%	2%	8%
							grade 3 events	324	324	294	297	315	1378
								1%	1%	1%	1%	1%	3%
							grade 4 events	306	365	300	320	342	1376
								1%	1%	1%	1%	1%	3%
							grade 5 events	1032	1123	961	1113	1207	3520
								3%	4%	3%	3%	4%	9%
							grade 6 events	568	631	544	582	657	7674
								2%	2%	1%	2%	2%	21%
							grade 7 events	21637	20853	24229	24371	25046	17504
								82%	82%	85%	84%	84%	48%

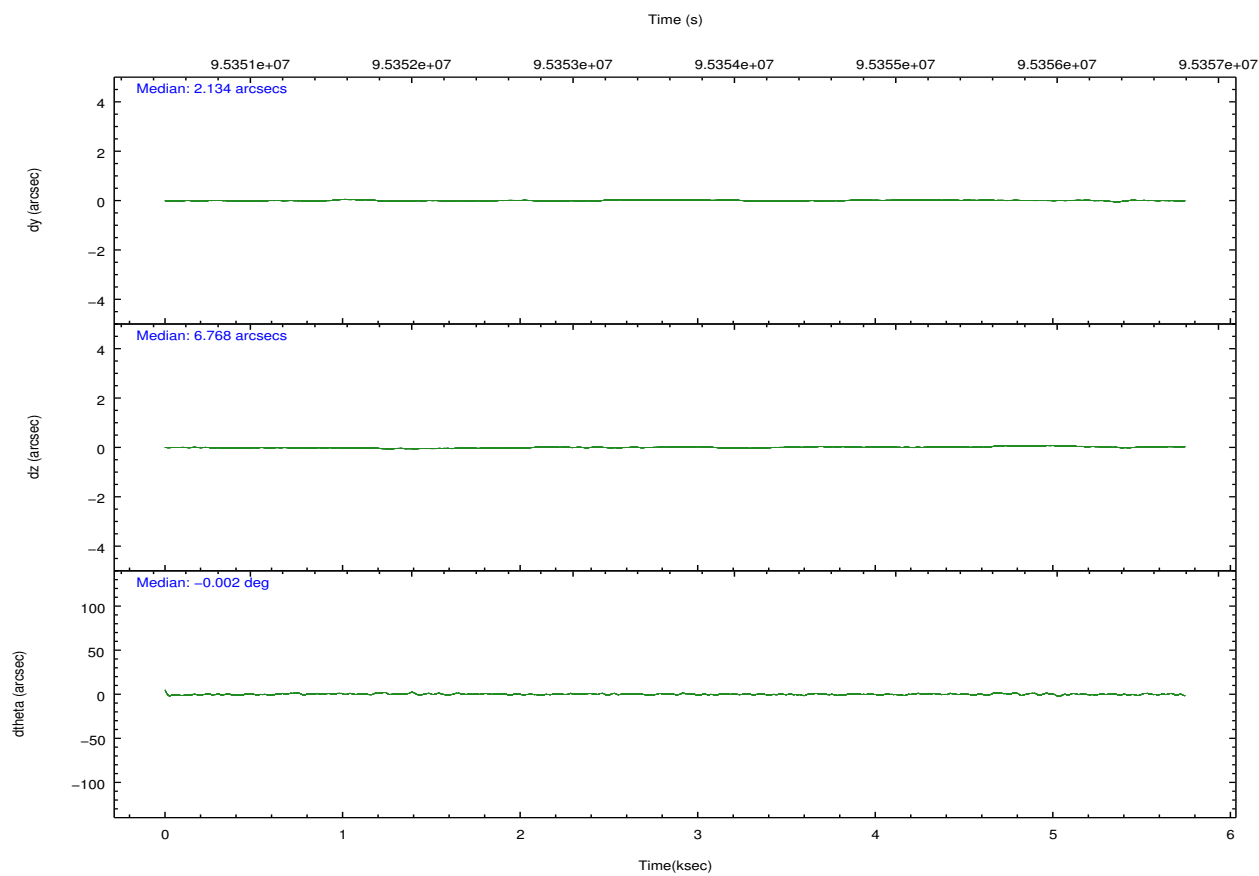
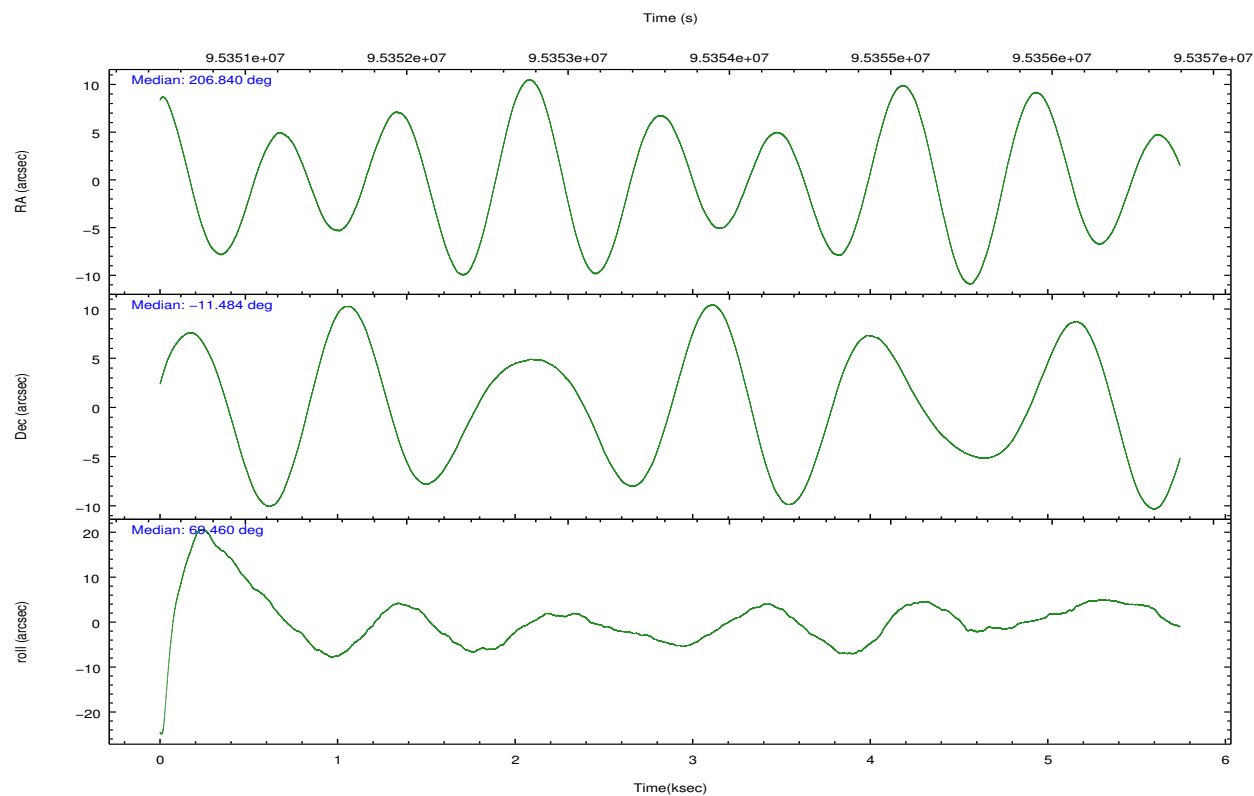
2.2 Compared Parameters

Parameter	Planned	Actual
Instrument	ACIS	ACIS
Detector	ACIS-012367	ACIS-012367
Grating	NONE	NONE
Data mode	FAINT	FAINT
Observation mode	POINTING	POINTING
[deg] Pointing RA	206.845039	206.8404725248307
[deg] Pointing Dec	-11.510515	-11.48343246282007
[deg] Pointing Roll	69.247946	69.45564726334396
[mm] SIM focus pos	-0.782348	-0.7809083437167272
[mm] SIM defocus	0	0.001439871863259334
[mm] SIM translation stage pos	-233.592463	-233.5874344608287
[mm] SIM translation stage offset	0	-0.005018542100998502
[s] Observation start time (MET)	95351681.184000	95350351.55141801
Observation start date	2001-01-08T14:33:37	2001-01-08T14:12:31
[s] Observation end time (MET)	95356481.184000	95356980.22667199
Observation end date	2001-01-08T15:53:37	2001-01-08T16:03:00
Read mode	TIMED	TIMED

Parameter	Planned	Actual
Obspar format version number	7	7
Obspar file type	PREDICTED	ACTUAL
Obspar update status	NONE	UPDATED
Number of optional ACIS chips dropped	0	0
On-chip summing requested	N	N
Subarray requested	NONE	NONE
Alternating exposures requested	N	N
[s] Primary exposure time	0.000000	3.2

2.3 Aspect



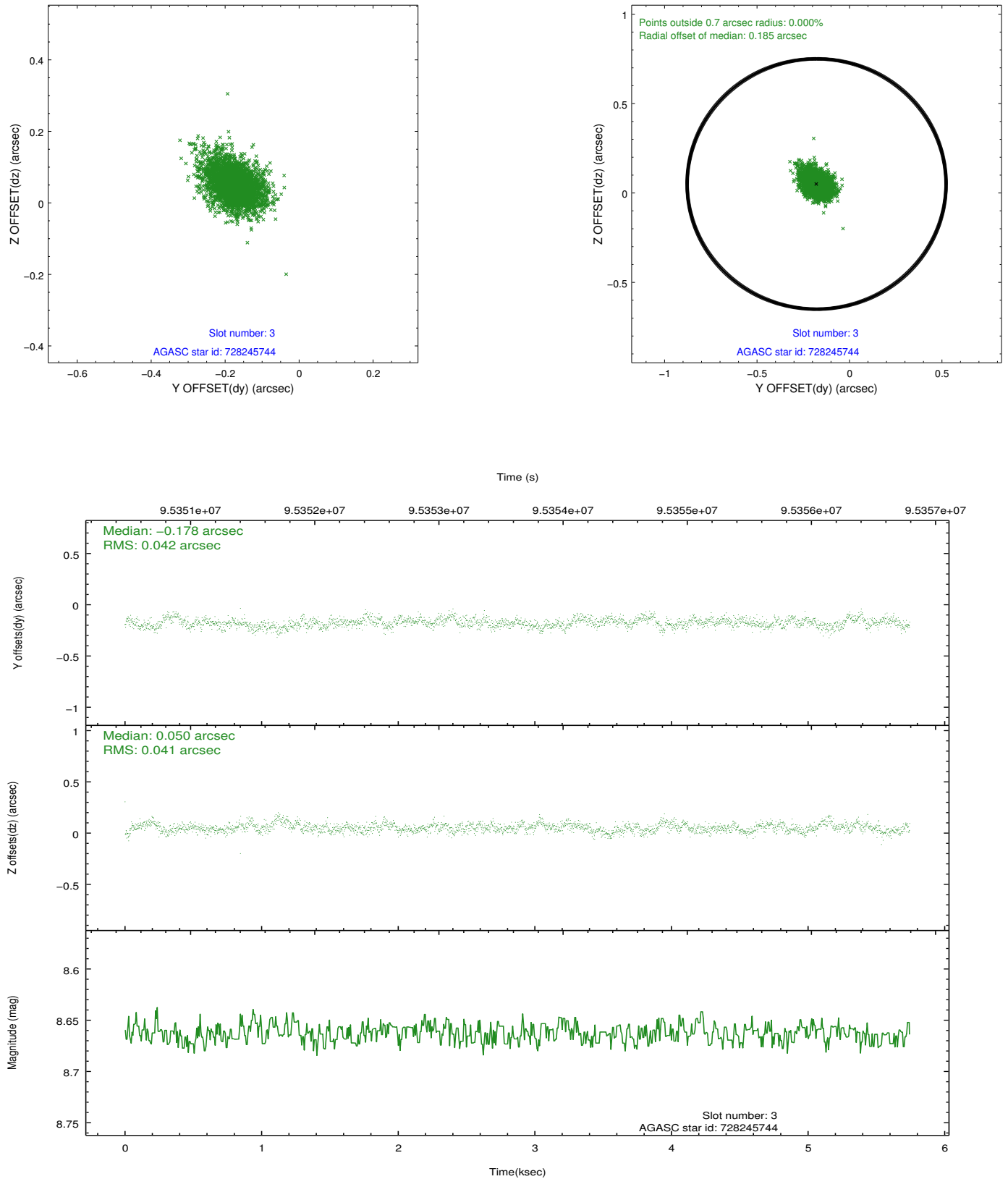


Slot Statistics

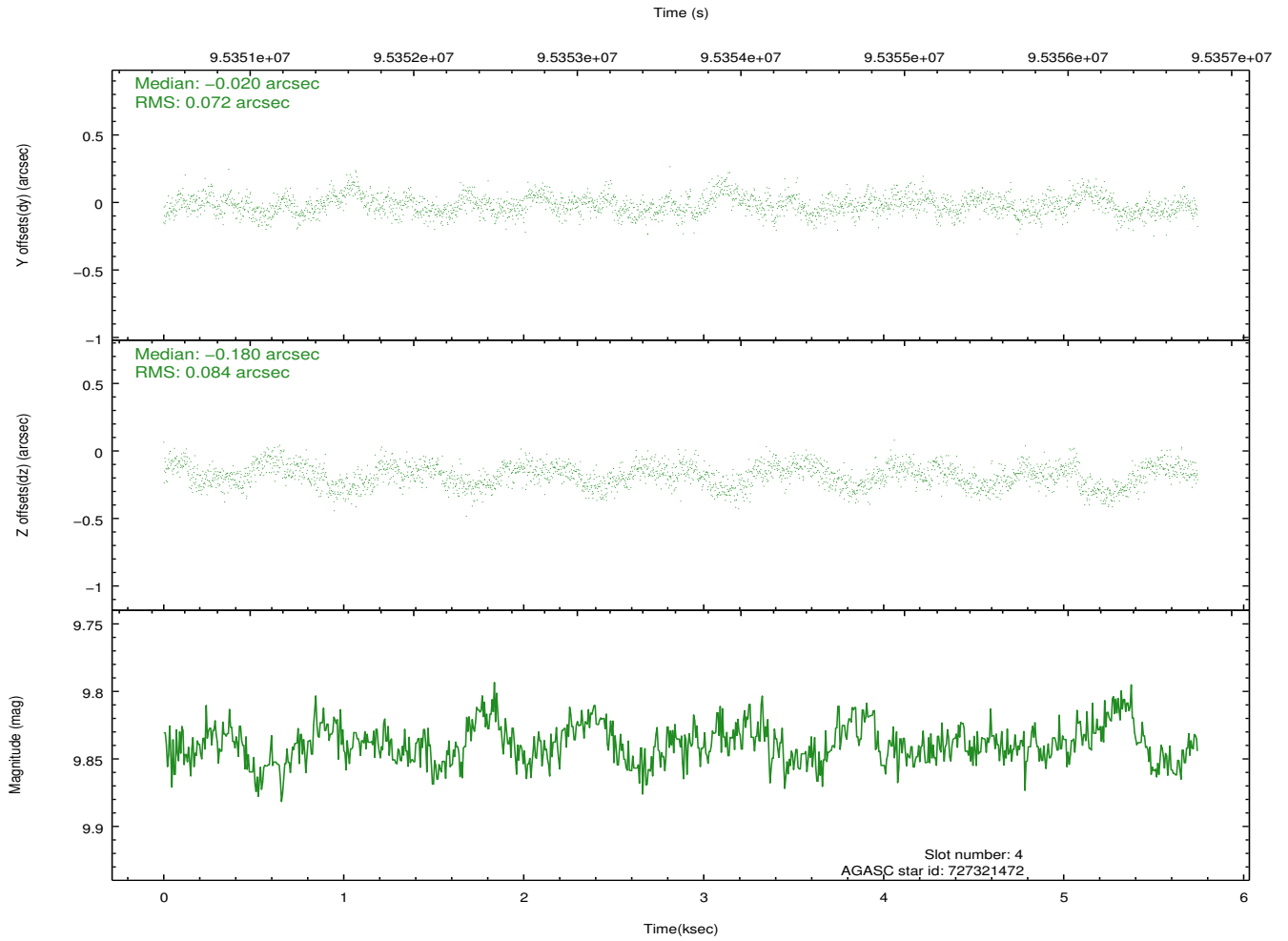
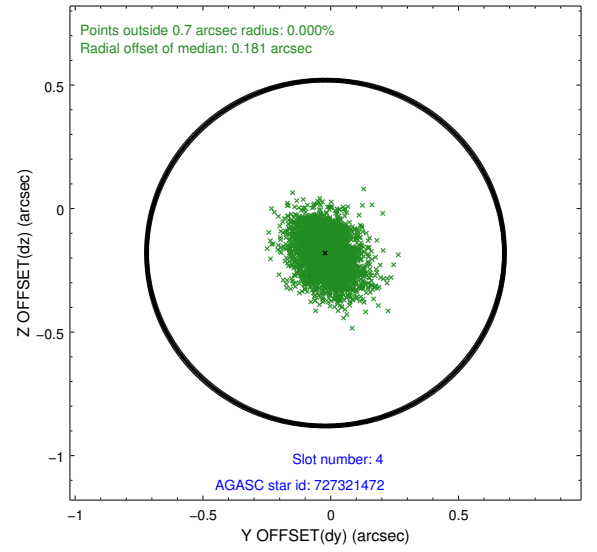
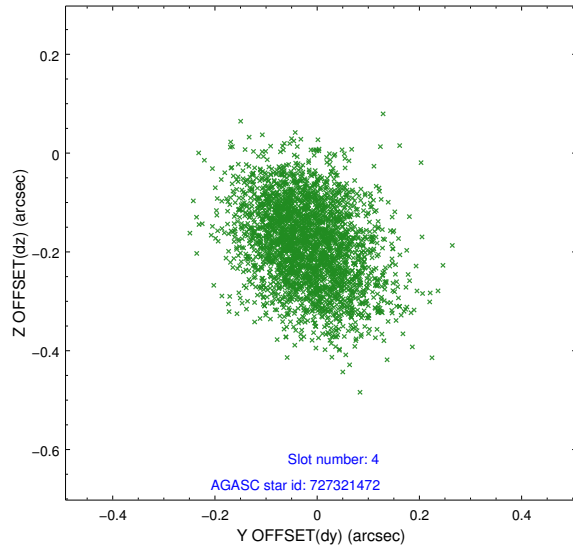
slot	status	id	mag	n_pts	med_dy	med_dz	dr1	dr2	ra	dec	mean_y	mean_z
0	FID	ACIS-I-2	7.16	1401	-0.043	-0.069	0.009	0.014	0.000000	0.000000	-756.53	-836.59
1	FID	ACIS-I-4	7.18	1401	-0.014	0.051	0.006	0.011	0.000000	0.000000	2157.08	1069.19
2	FID	ACIS-I-5	7.23	1401	-0.044	0.087	0.008	0.014	0.000000	0.000000	-1809.02	1068.25
3	GUIDE	728245744	8.66	2803	-0.178	0.050	0.060	0.103	206.959040	-11.284446	904.24	-88.52
4	GUIDE	727321472	9.84	2801	-0.020	-0.180	0.119	0.194	206.729745	-11.411859	189.05	505.56
5	GUIDE	727327544	9.57	2803	-0.022	-0.071	0.098	0.159	206.398747	-11.483258	-466.26	1506.33
6	GUIDE	728236632	9.66	2798	0.206	0.155	0.095	0.153	206.842205	-12.122561	-2063.11	-771.05
7	GUIDE	728245424	10.28	2801	0.009	0.053	0.146	0.235	207.124012	-11.148003	1569.18	-460.03

2.4 Star Slots

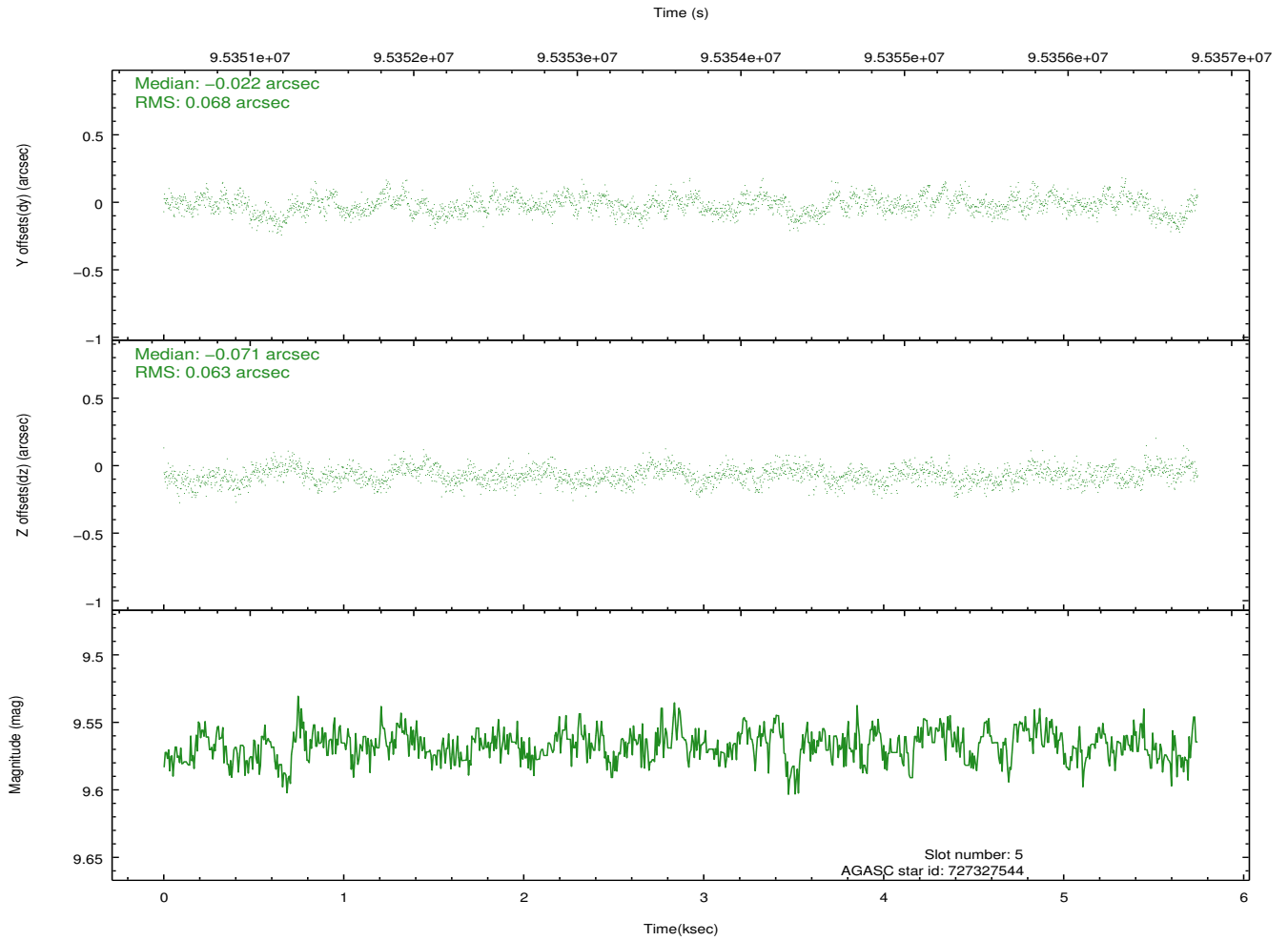
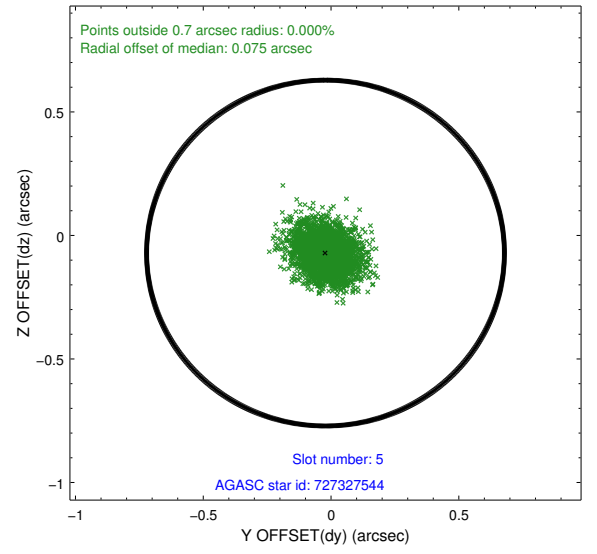
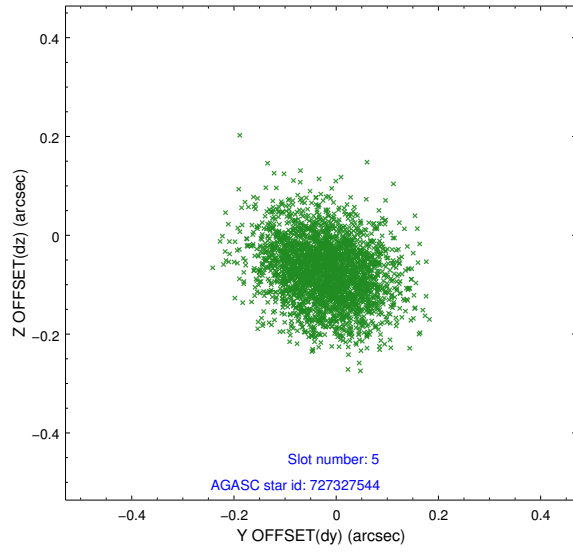
2.4.1 Slot 3



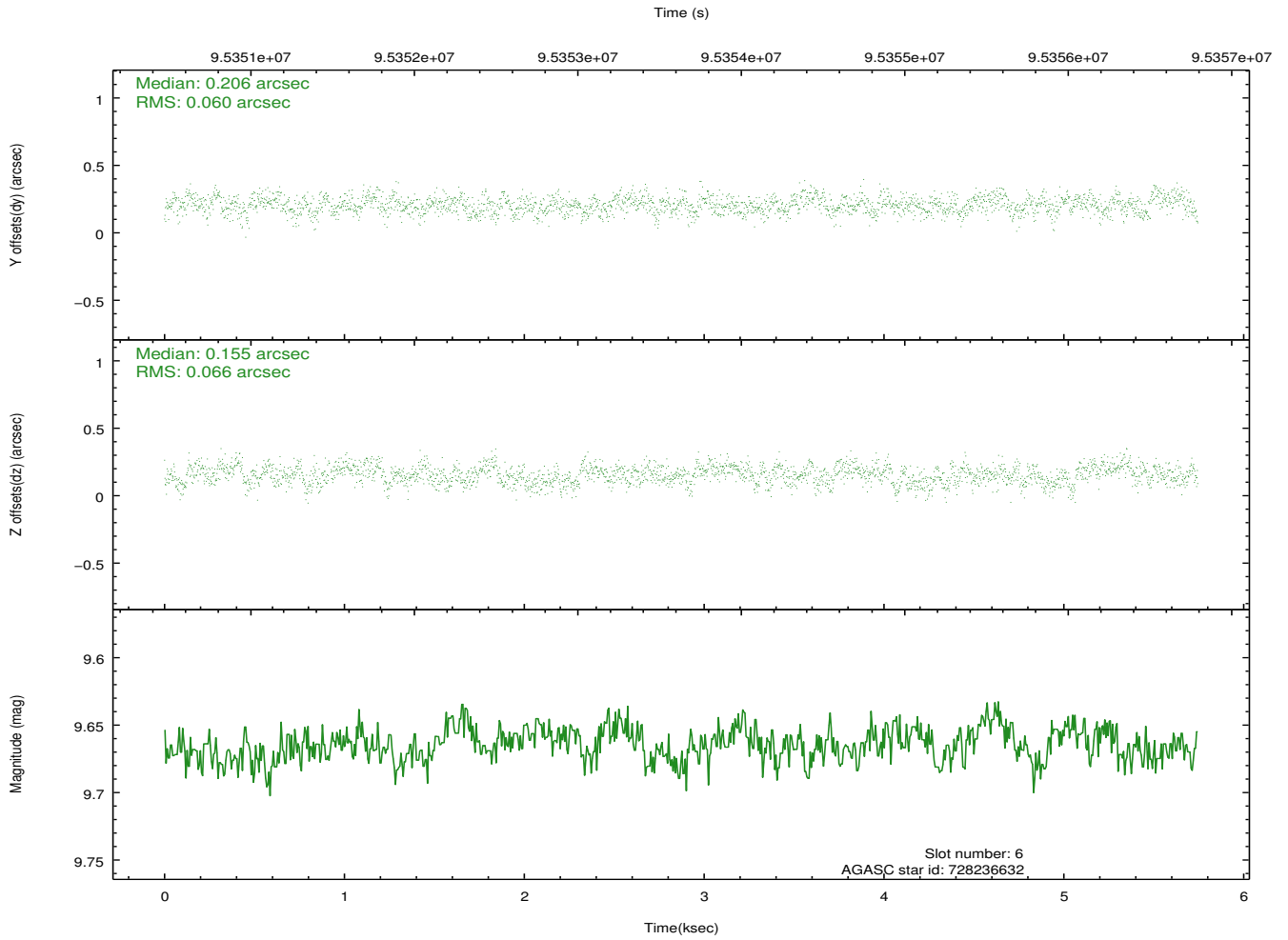
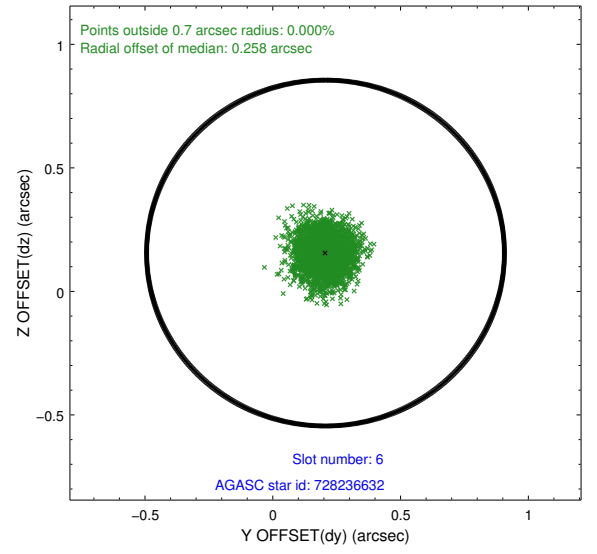
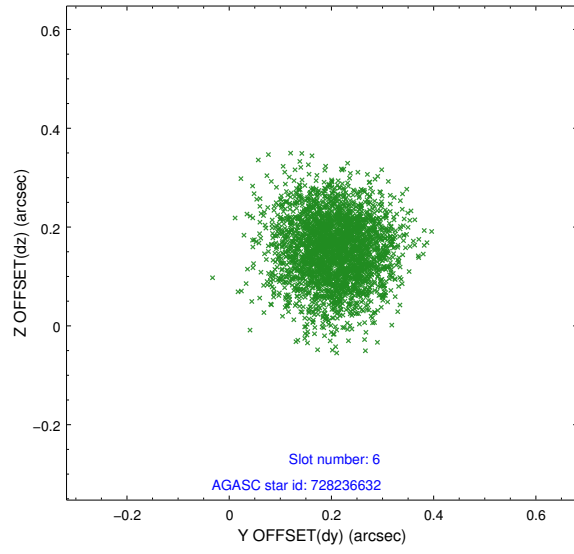
2.4.2 Slot 4



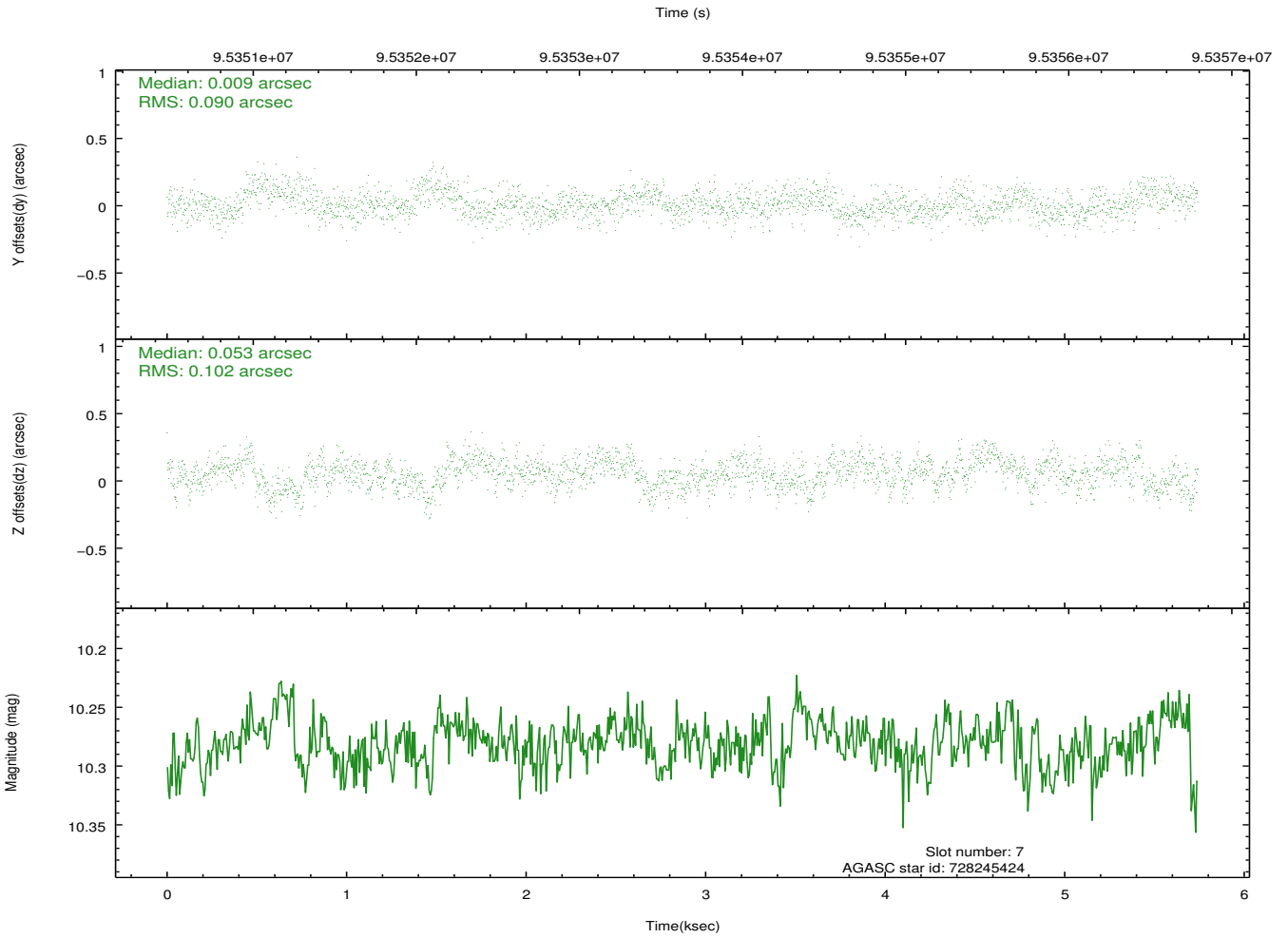
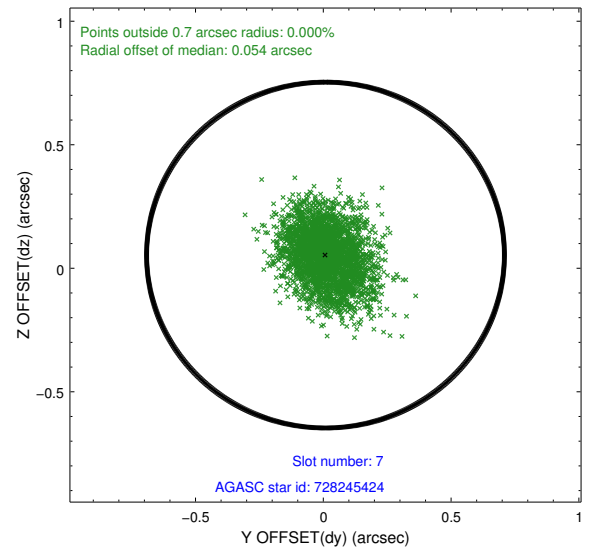
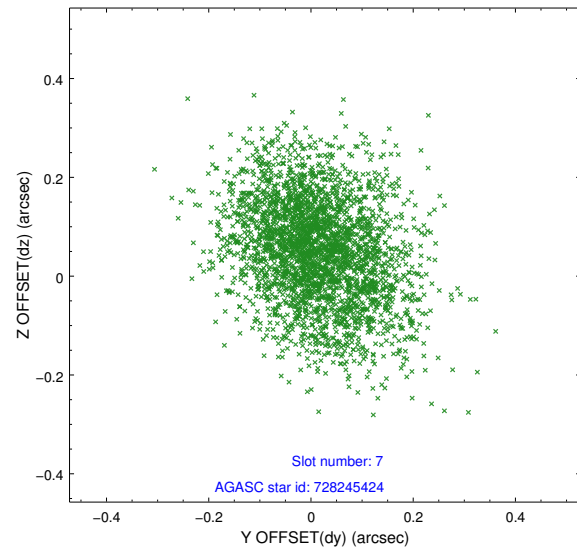
2.4.3 Slot 5



2.4.4 Slot 6

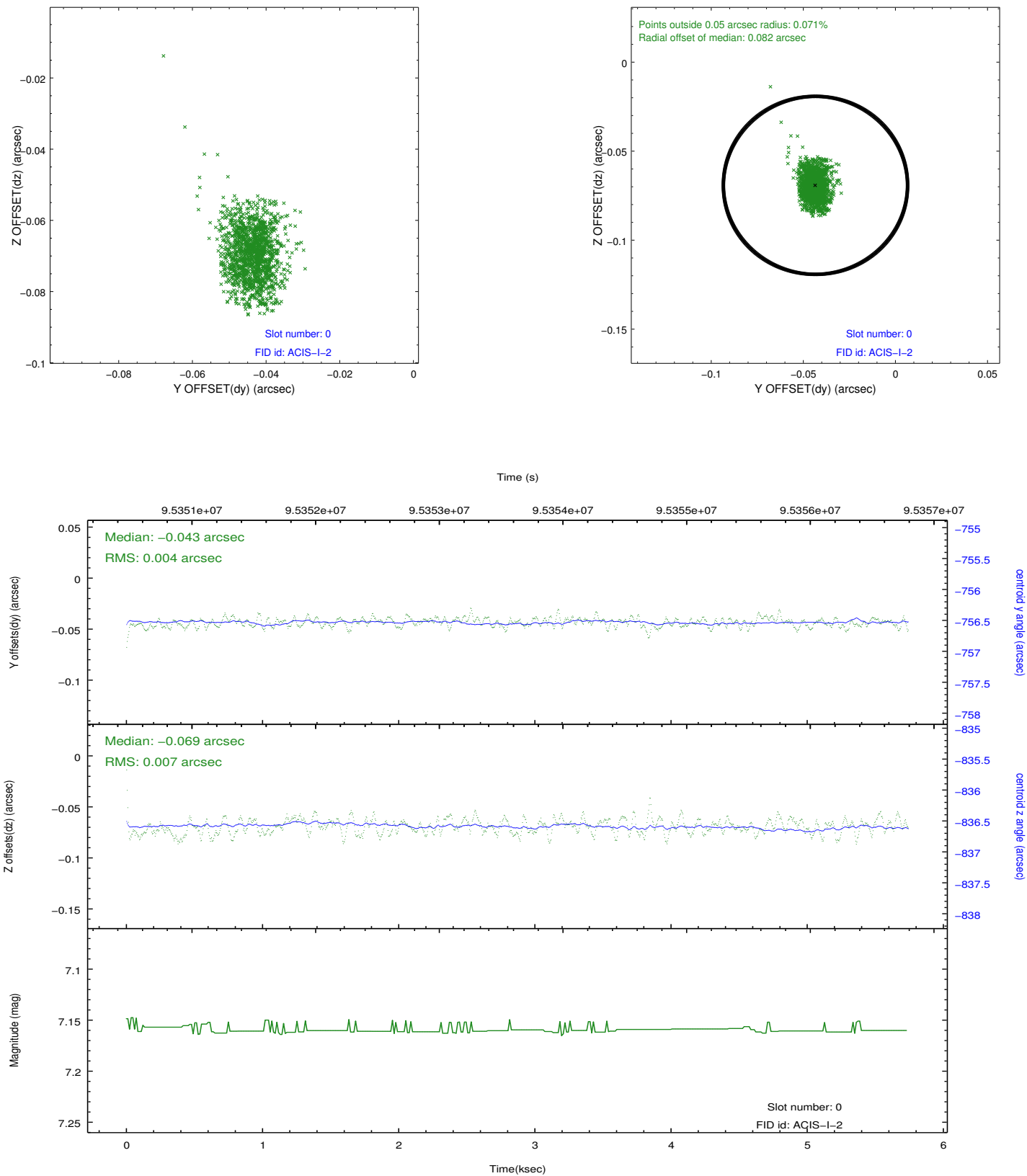


2.4.5 Slot 7

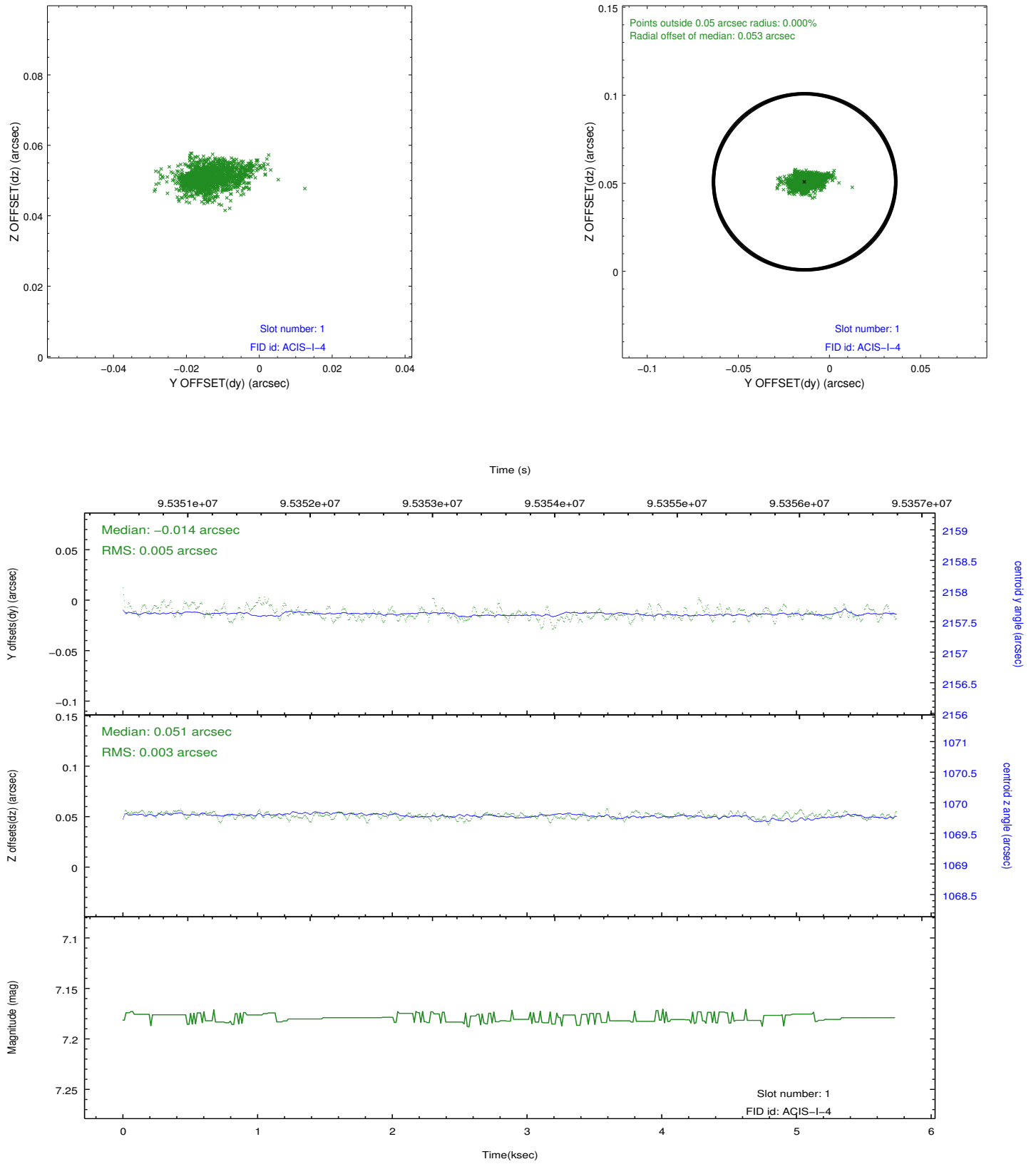


2.5 FID Slots

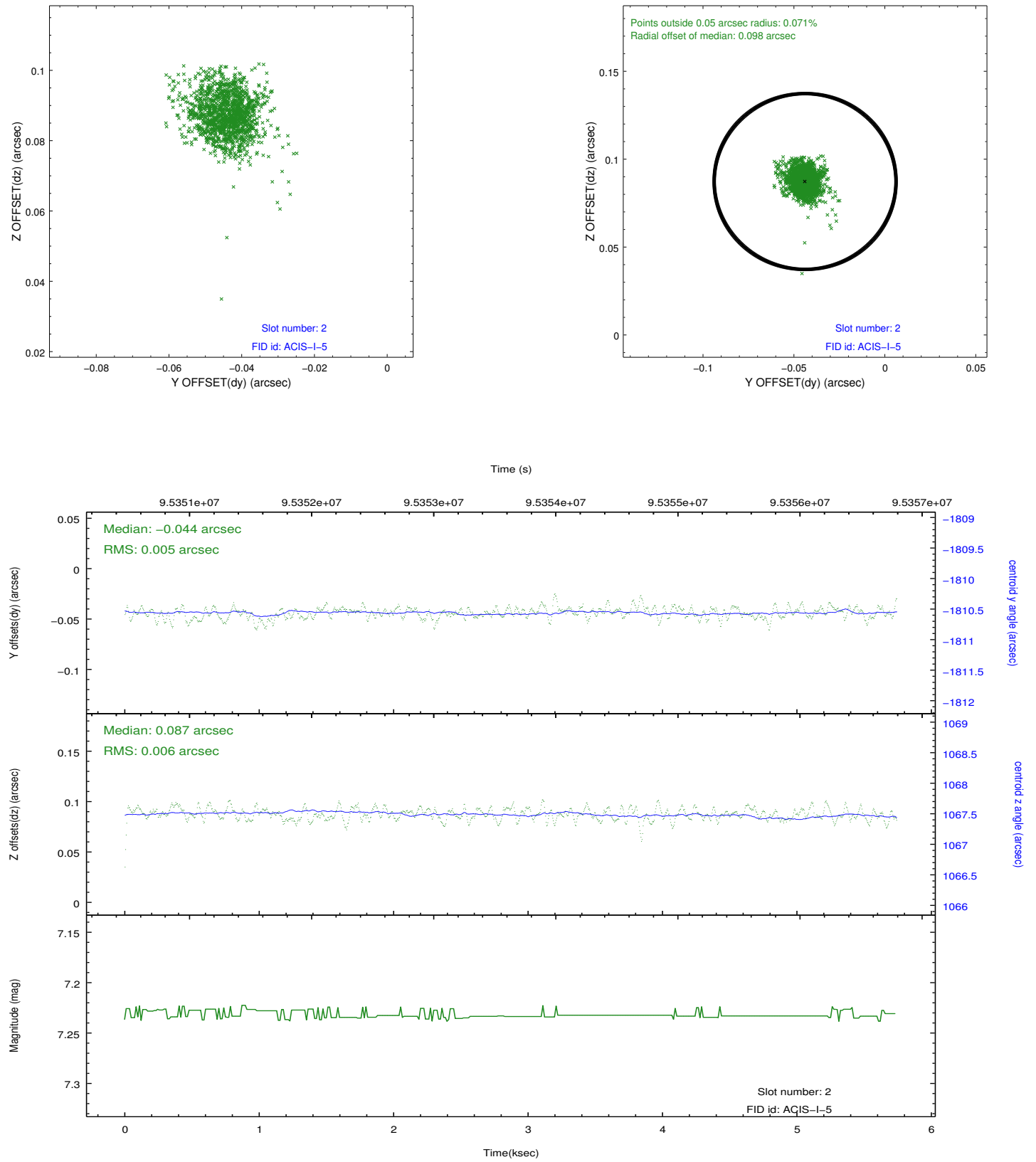
2.5.1 Slot 0



2.5.2 Slot 1



2.5.3 Slot 2



A Summary

A.1 Status

V&V Scientist	Jen Lauer
V&V Date (YYYY-MM-DD)	2012.09.14
V&V Edition	1
V&V Disposition and Status	OK
V&V Charge Time	4.755

A.2 Comments