

V&V Reference Report

L2 ASCDS Version : 7.6.9

Observation 2262 - L2 Version 001
Chandra X-Ray Center

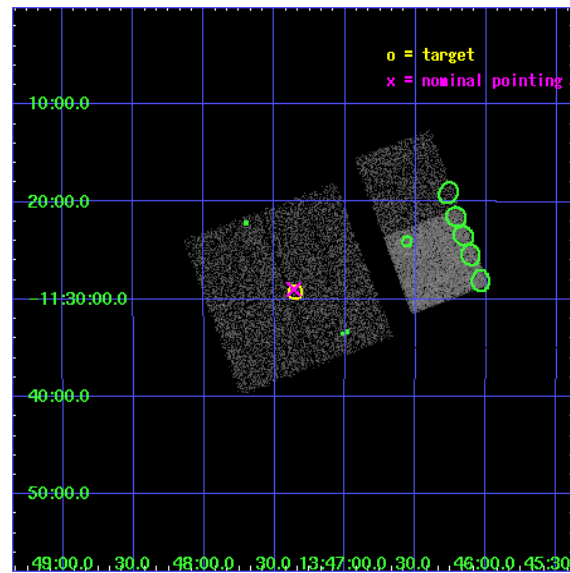
L2 Processing Date : Nov 2 2006

Contents

1	Front	2
2	OBI	3
2.1	OBI	3
2.1.1	Images	3
2.1.2	Bias	3
2.1.3	Parameters	4
2.1.4	Events	4
2.2	Compared Parameters	5
2.3	Aspect	6
2.4	Star Slots	9
2.4.1	Slot 3	9
2.4.2	Slot 4	10
2.4.3	Slot 5	11
2.4.4	Slot 6	12
2.4.5	Slot 7	13
2.5	FID Slots	14
2.5.1	Slot 0	14
2.5.2	Slot 1	15
2.5.3	Slot 2	16
3	Point Sources	17
A	Summary	18
A.1	Status	18
A.2	Comments	18

1 Front

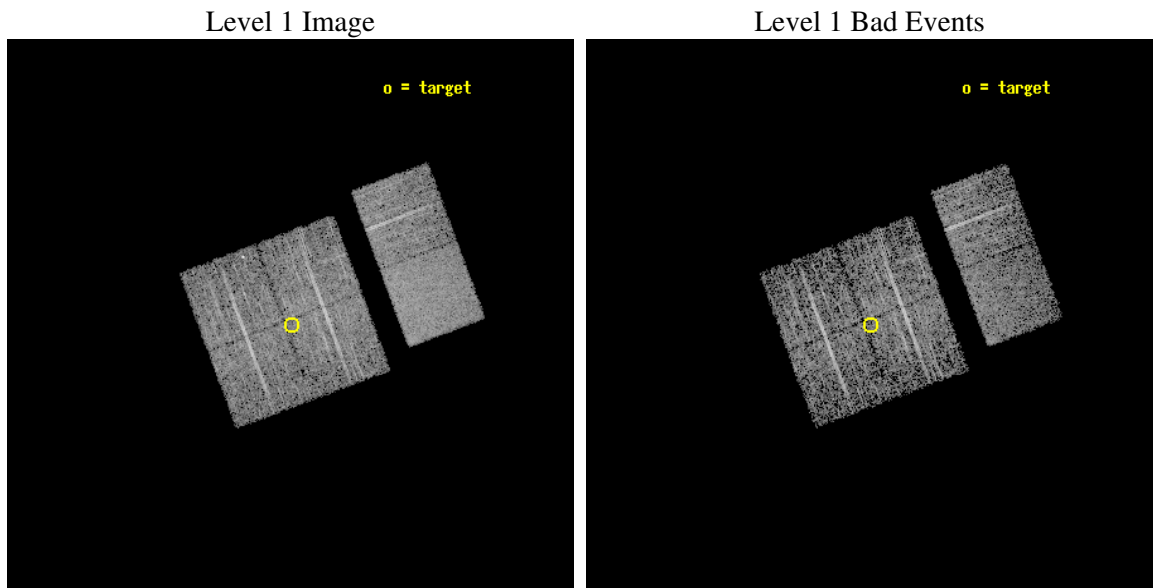
seq_num	900089
obs_id	2262
title	CHANDRA OBSERVATION OF HARD X-RAY SOURCES DISCOVERED WITH ASCA
observer	Dr Yoshihiro Ueda
object	AGX~J134720-1129
dtcycle	0
cycle	P
ra_targ	206.837083
dec_targ	-11.486889
ra_nom	206.84047252483
dec_nom	-11.48343246282
roll_nom	69.455647263344
revision	2
ontime	4752.0000044256
livetime	4691.8273190587
ontime0	4752.0000044256
ontime1	4748.7590142637
ontime2	4752.0000044256
ontime3	4752.0000044256
ontime6	4752.0000044256
ontime7	4752.0000044256
l2events	27803



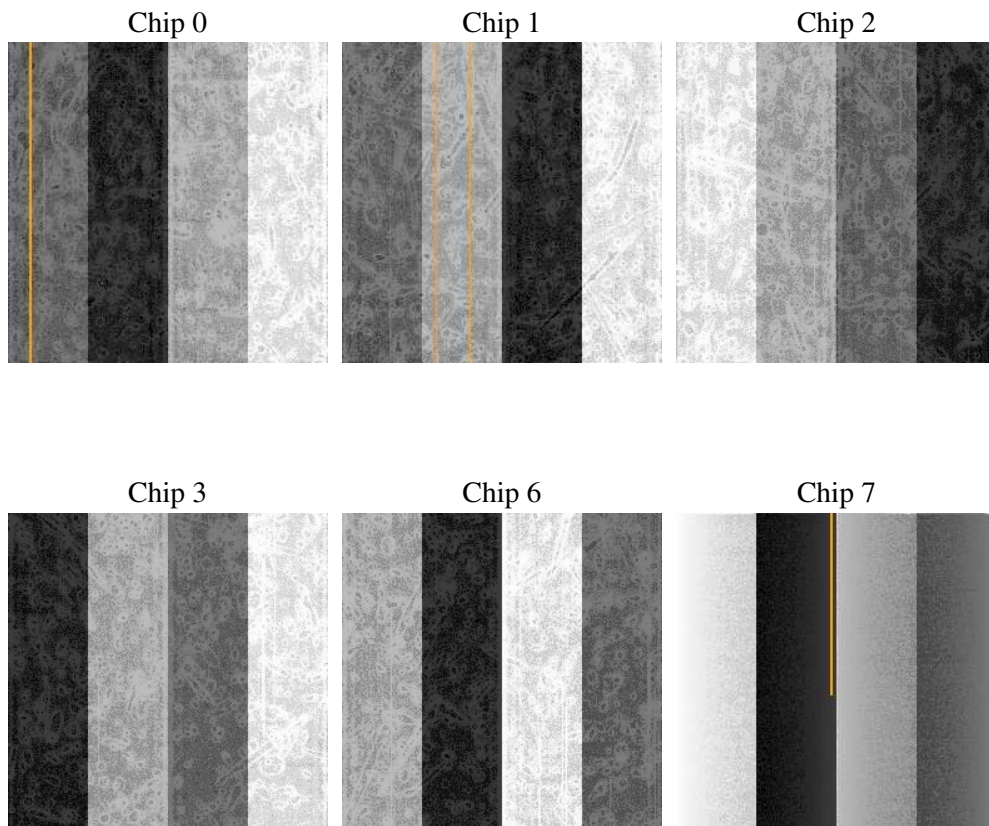
2 OBI

2.1 OBI

2.1.1 Images



2.1.2 Bias



2.1.3 Parameters

obi_num	0
ascdsver	7.6.9
caldbver	3.2.3
date	2006-11-02T13:20:31
revision	2

sched_exp_time	4800.000000
ontime	4757.7840226442
ontime0	4757.7840525508
ontime1	4754.5430324823
ontime2	4757.7840226442
ontime3	4757.7840226442
ontime6	4757.7840226442
ontime7	4757.7840525508
l1events	174304

2.1.4 Events

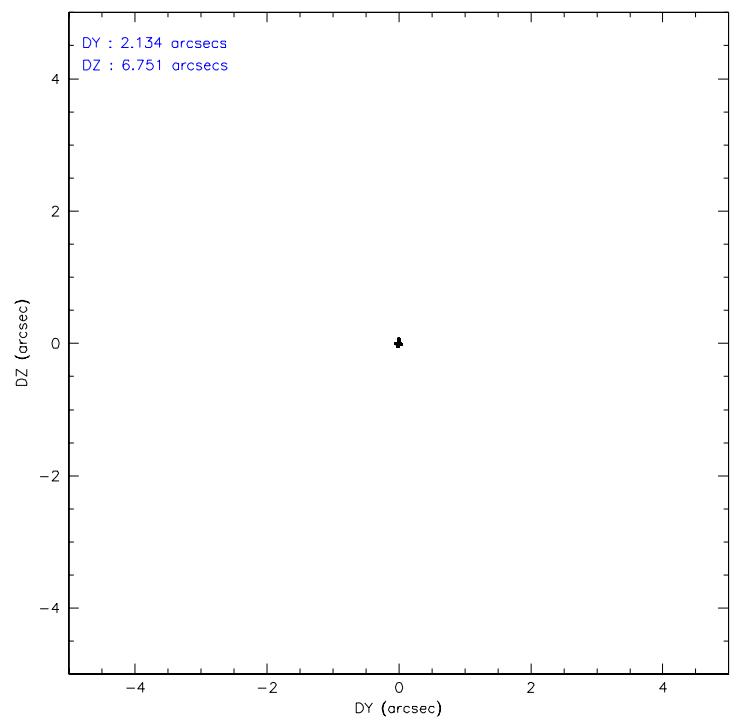
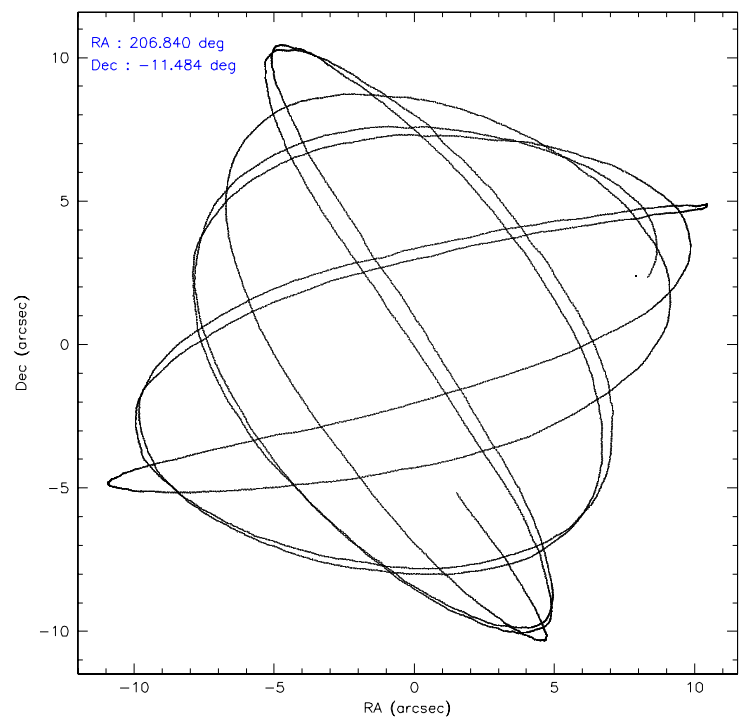
	ccd 0	ccd 1	ccd 2	ccd 3	ccd 6	ccd 7
level 1 events	26274	25376	28438	28777	29557	35882
rejected events	22682	21995	25215	25506	26273	22148
rejected %	86%	86%	88%	88%	88%	61%

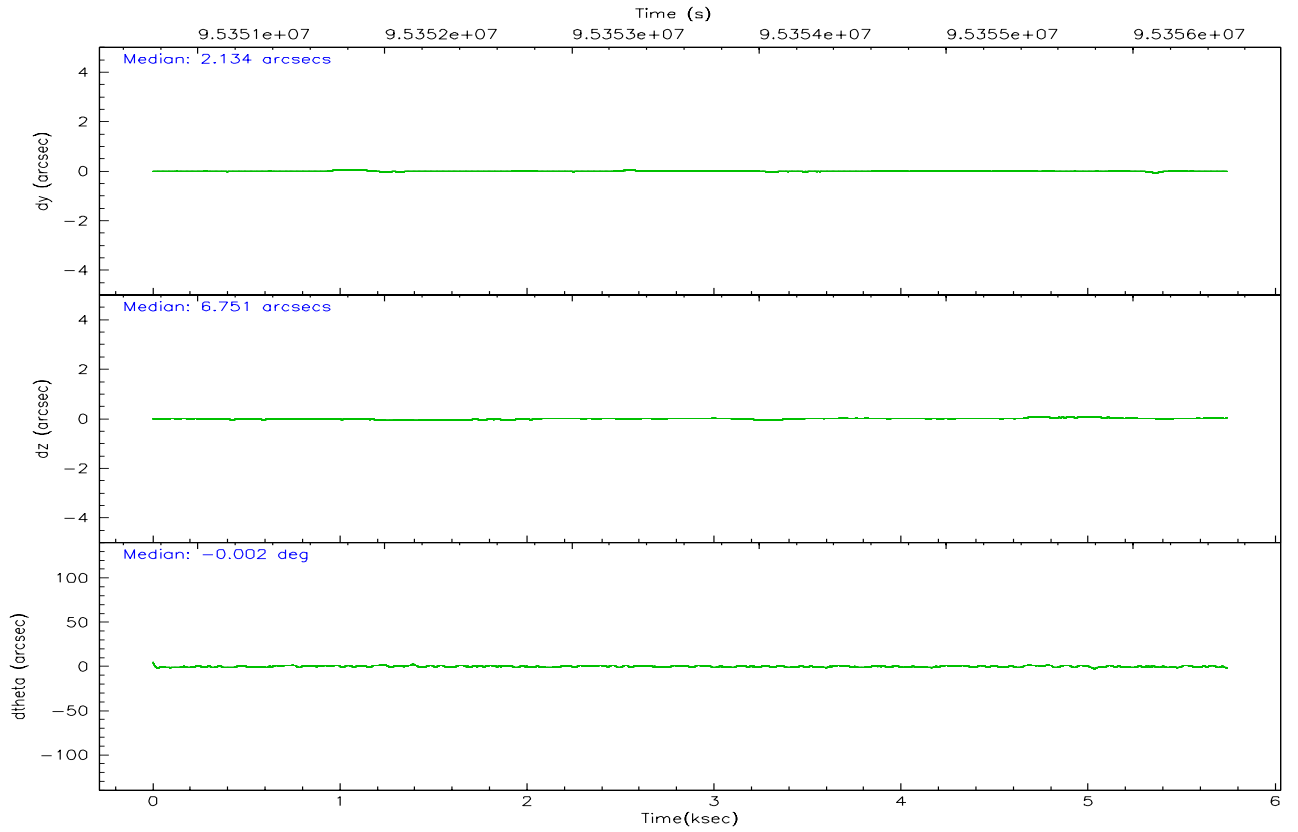
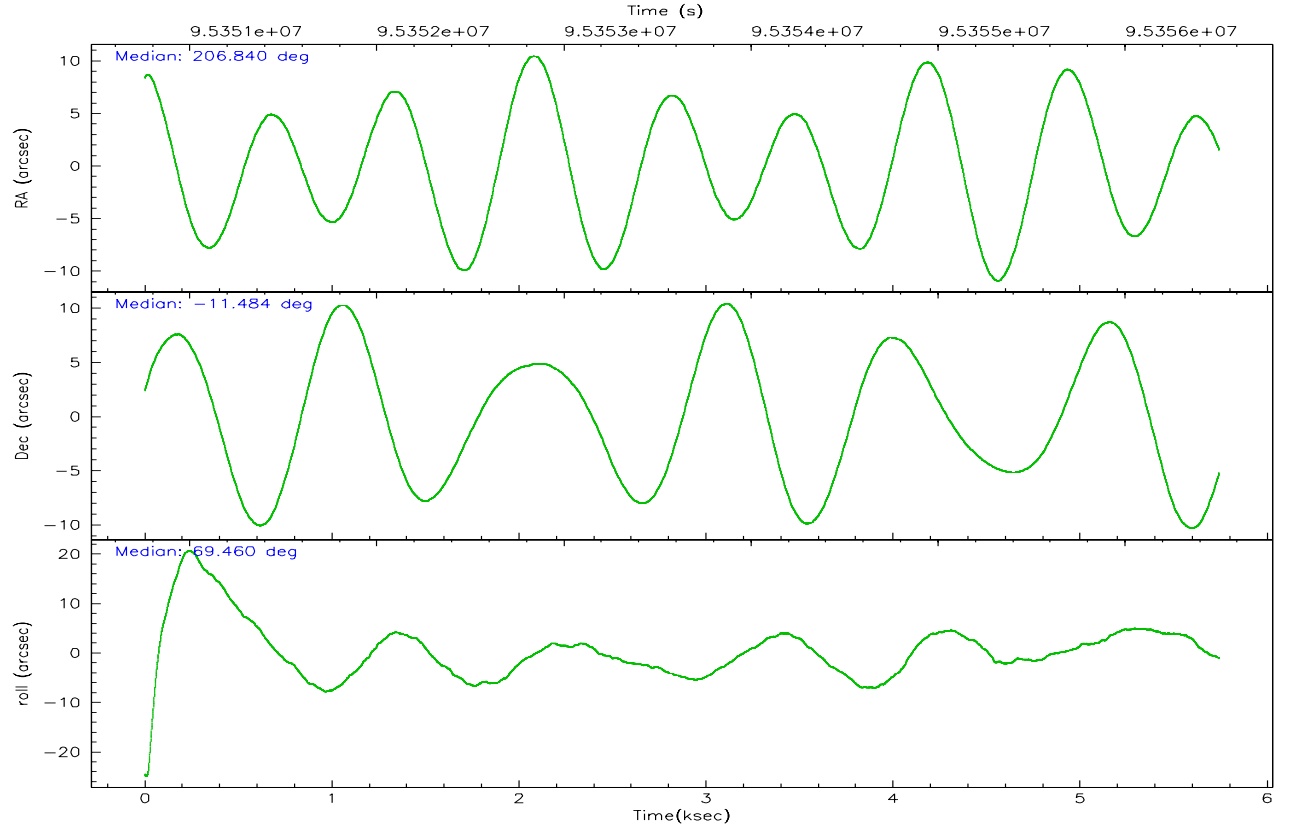
	ccd 0	ccd 1	ccd 2	ccd 3	ccd 6	ccd 7
grade 0 events	1657	1386	1388	1489	1323	901
	6%	5%	4%	5%	4%	2%
grade 1 events	9	12	18	15	16	17
	0%	0%	0%	0%	0%	0%
grade 2 events	741	682	704	590	651	3389
	2%	2%	2%	2%	2%	9%
grade 3 events	324	324	294	298	315	748
	1%	1%	1%	1%	1%	2%
grade 4 events	306	365	300	320	342	758
	1%	1%	1%	1%	1%	2%
grade 5 events	1032	1123	961	1112	1207	2418
	3%	4%	3%	3%	4%	6%
grade 6 events	568	631	544	582	657	7957
	2%	2%	1%	2%	2%	22%
grade 7 events	21637	20853	24229	24371	25046	19694
	82%	82%	85%	84%	84%	54%

2.2 Compared Parameters

Parameter	Planned	Actual	Parameter	Planned	Actual
Instrument	ACIS	ACIS	Obspar format version number	6	6
Detector	ACIS-012367	ACIS-012367	Obspar file type	PREDICTED	ACTUAL
Grating	NONE	NONE	Obspar update status	NONE	UPDATED
Data mode	FAINT	FAINT	Number of optional ACIS chips dropped	0	0
Observation mode	POINTING	POINTING	On-chip summing requested	N	N
Pointing RA	206.845039	206.8404725248307	Subarray requested	NONE	NONE
Pointing Dec	-11.510515	-11.48343246282005	Alternating exposures requested	N	N
Pointing Roll	69.247946	69.45564726334391	Primary exposure time	0.000000	3.2
SIM focus pos (mm)	-0.782348	-0.7809083437167272			
SIM defocus (mm)	0	0.001439871863259334			
SIM translation stage pos (mm)	-233.592463	-233.5874344608287			
SIM translation stage offset (mm)	0	-0.005018542100998502			
Observation start time	95351681.184000	95350351.55141801			
Observation start date	2001-01-08T14:33:37	2001-01-08T14:12:31			
Observation end time	95356481.184000	95356980.22667199			
Observation end date	2001-01-08T15:53:37	2001-01-08T16:03:00			
Read mode	TIMED	TIMED			

2.3 Aspect



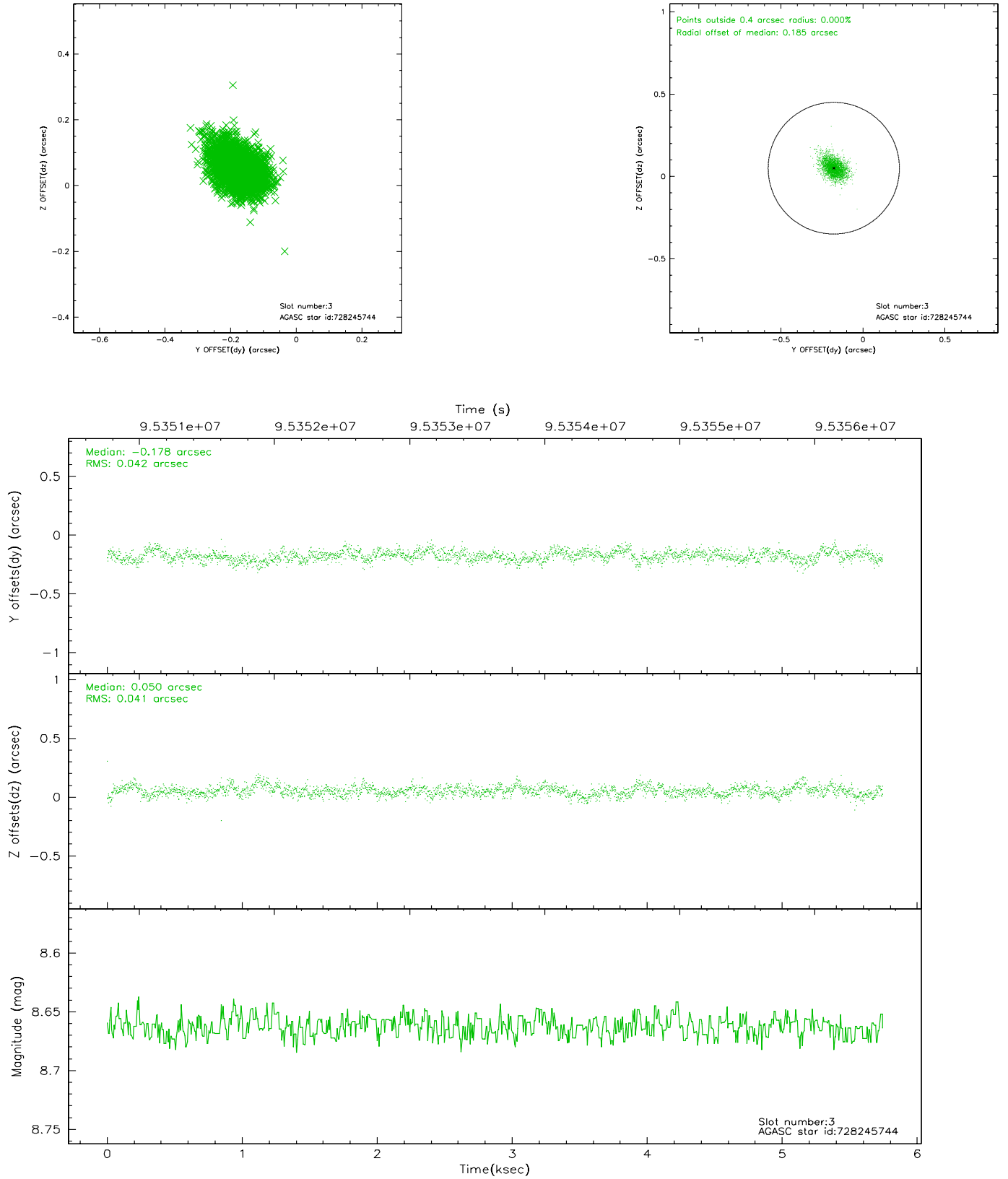


Slot Statistics

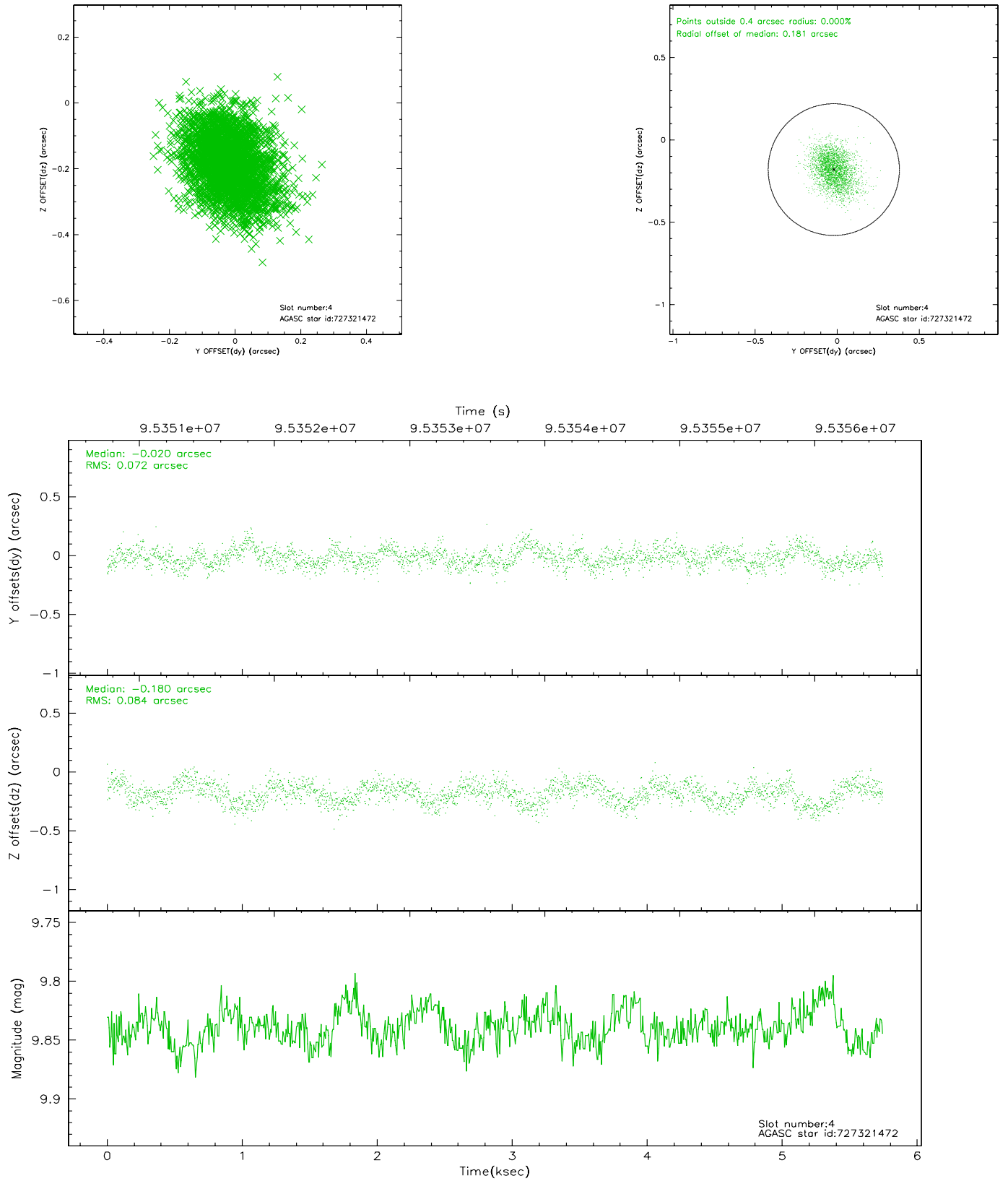
slot	status	id	mag	n_pts	med_dy	med_dz	dr1	dr2	ra	dec	mean_y	mean_z
0	FID	ACIS-I-2	7.16	1401	-0.032	-0.046	0.008	0.014	0.000000	0.000000	-756.52	-836.55
1	FID	ACIS-I-4	7.18	1401	-0.056	0.039	0.005	0.009	0.000000	0.000000	2157.04	1069.19
2	FID	ACIS-I-5	7.23	1401	-0.013	0.075	0.008	0.013	0.000000	0.000000	-1808.99	1068.26
3	GUIDE	728245744	8.66	2803	-0.178	0.050	0.060	0.103	206.959040	-11.284446	904.24	-88.52
4	GUIDE	727321472	9.84	2801	-0.020	-0.180	0.119	0.194	206.729745	-11.411859	189.05	505.56
5	GUIDE	727327544	9.57	2803	-0.022	-0.071	0.098	0.159	206.398747	-11.483258	-466.26	1506.33
6	GUIDE	728236632	9.66	2798	0.206	0.155	0.095	0.153	206.842205	-12.122561	-2063.11	-771.05
7	GUIDE	728245424	10.28	2801	0.009	0.053	0.146	0.235	207.124012	-11.148003	1569.18	-460.03

2.4 Star Slots

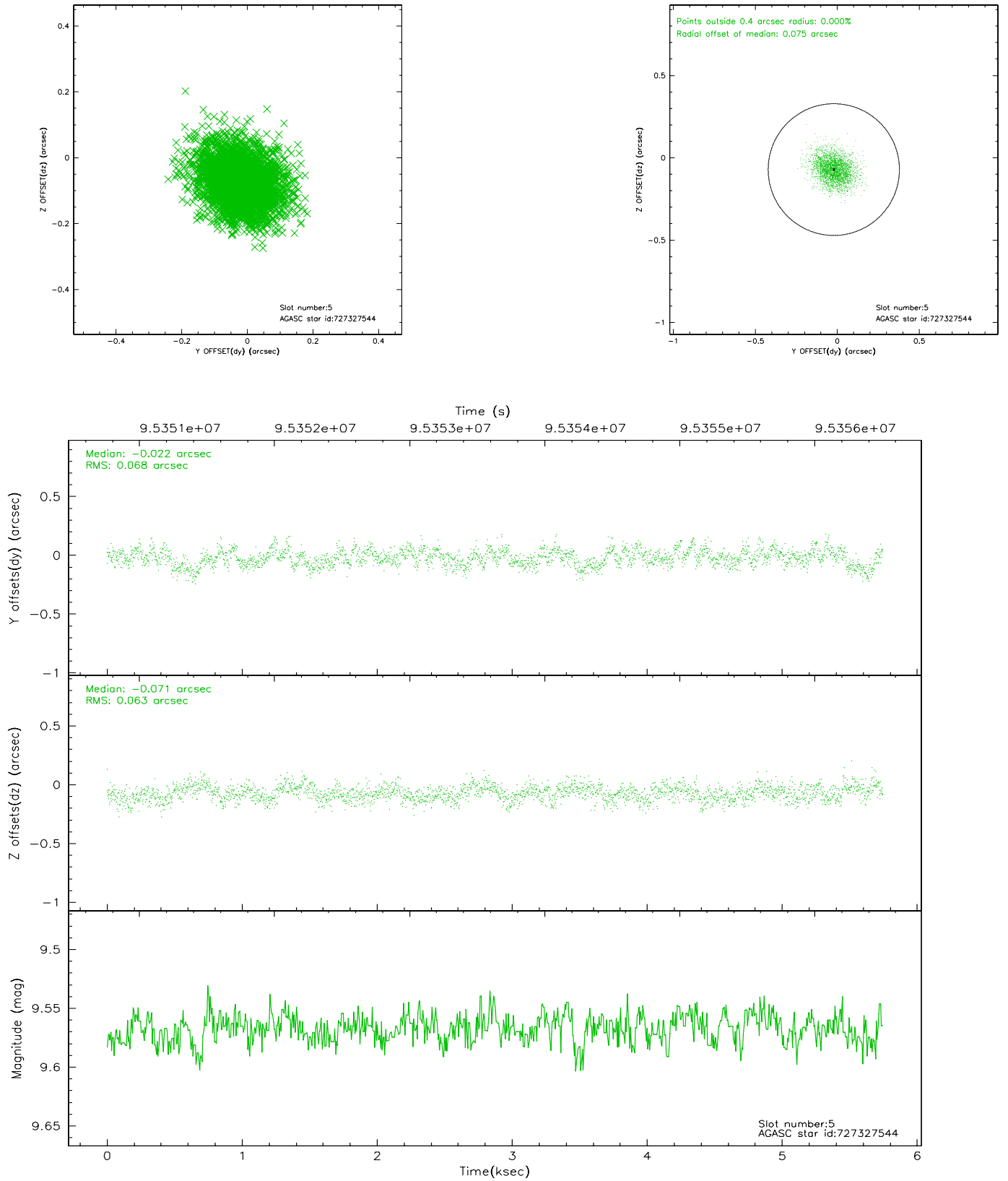
2.4.1 Slot 3



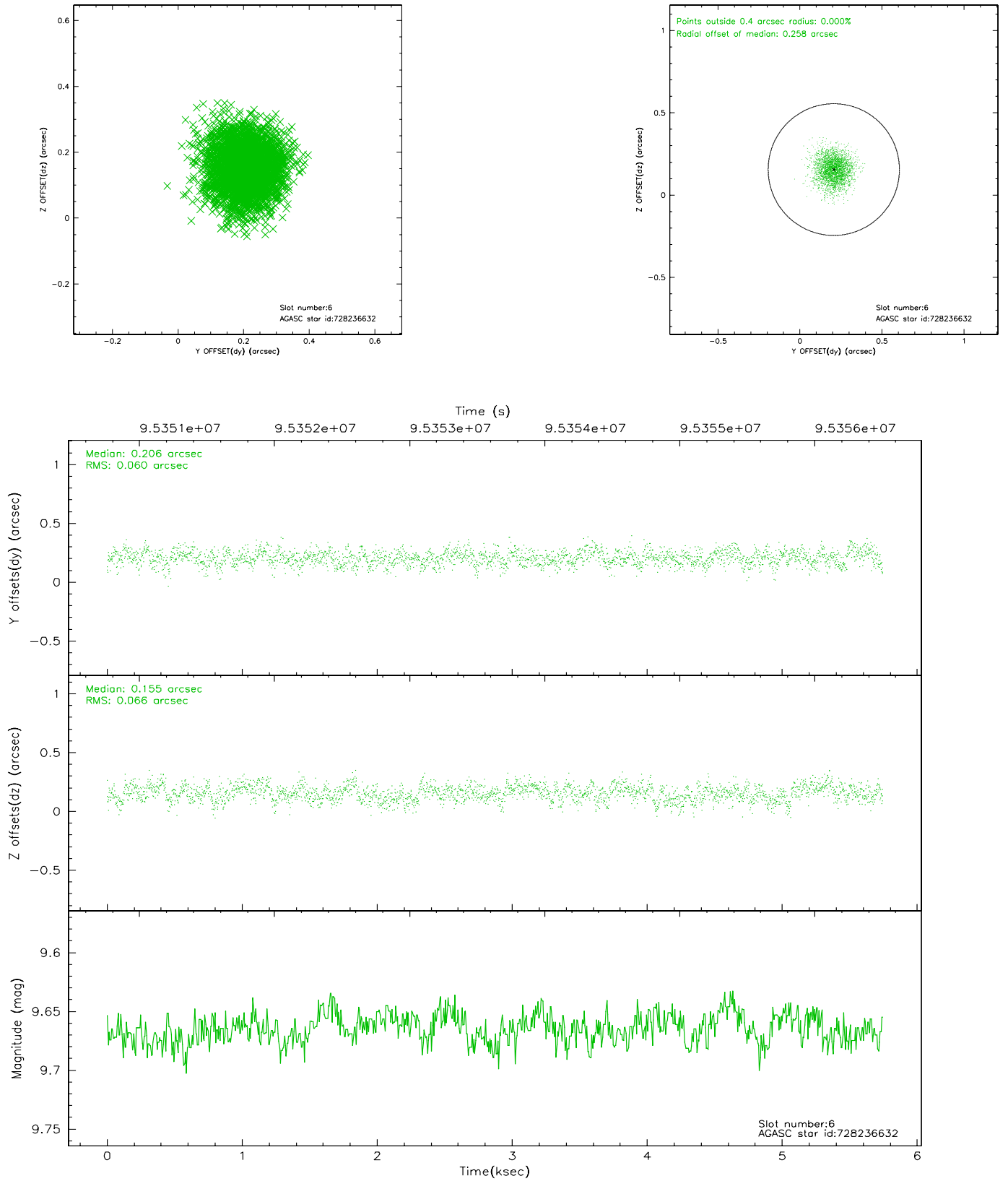
2.4.2 Slot 4



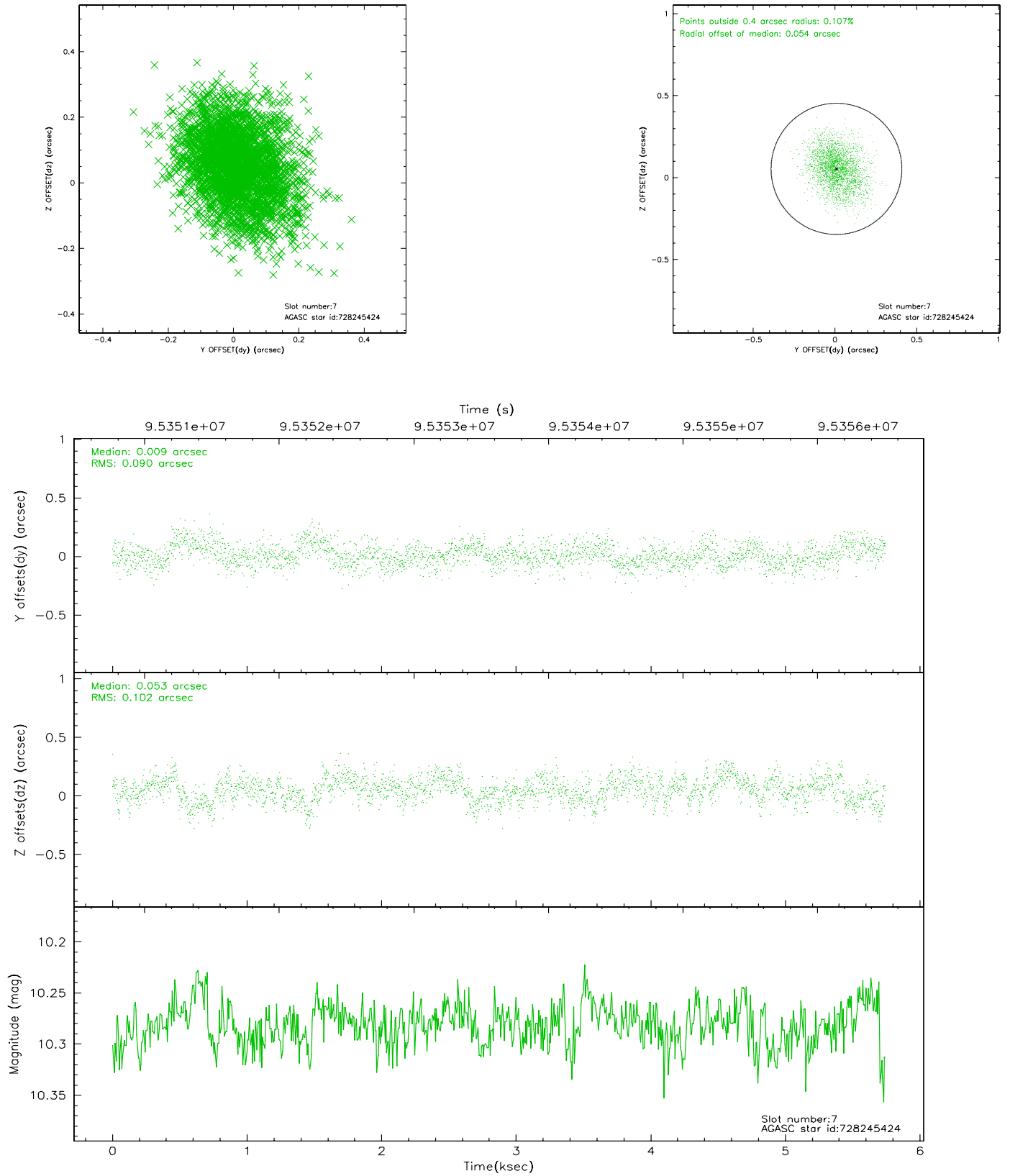
2.4.3 Slot 5



2.4.4 Slot 6

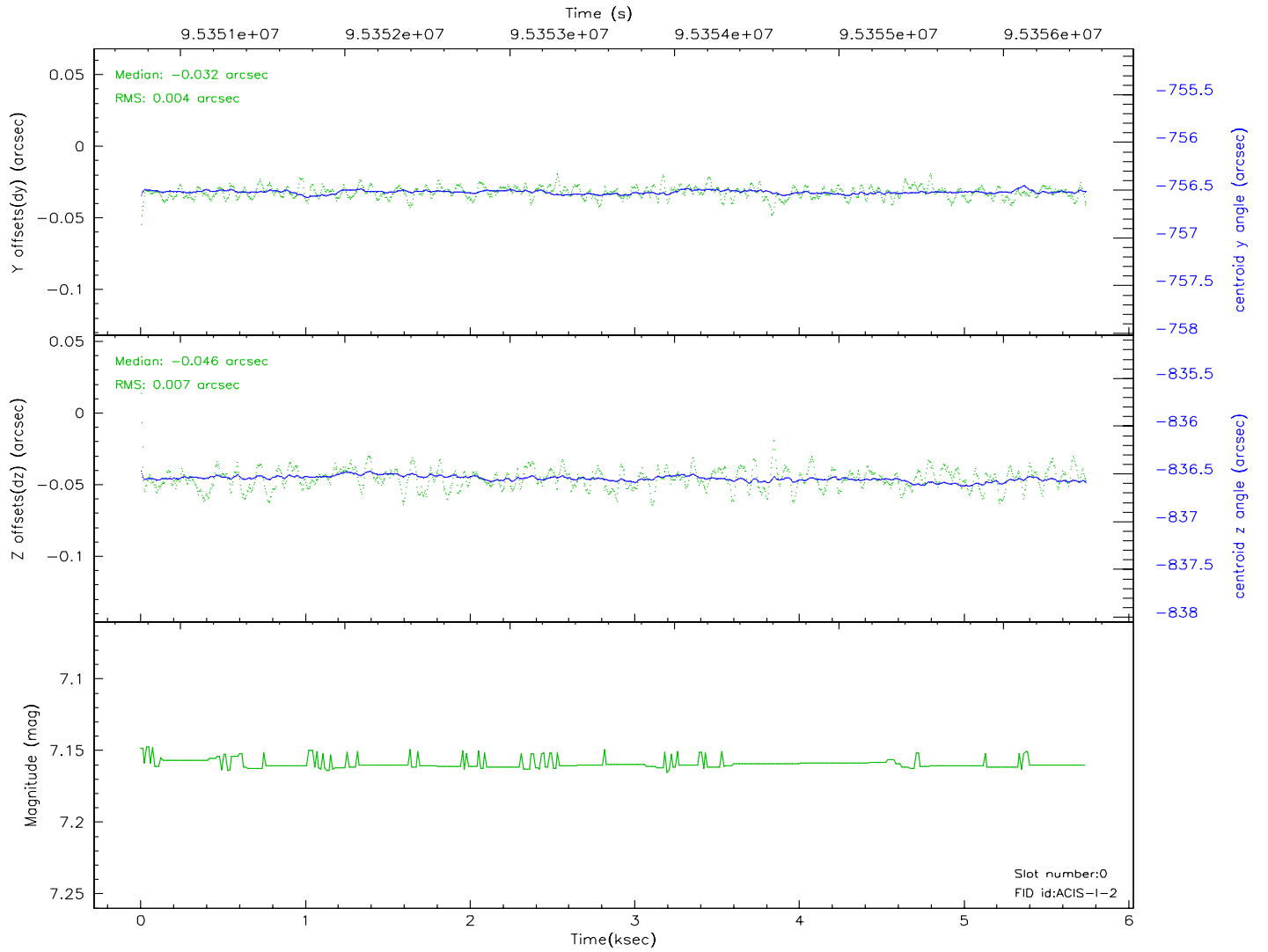
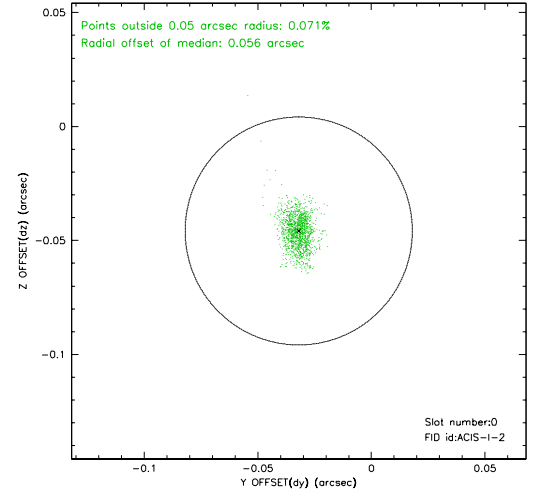
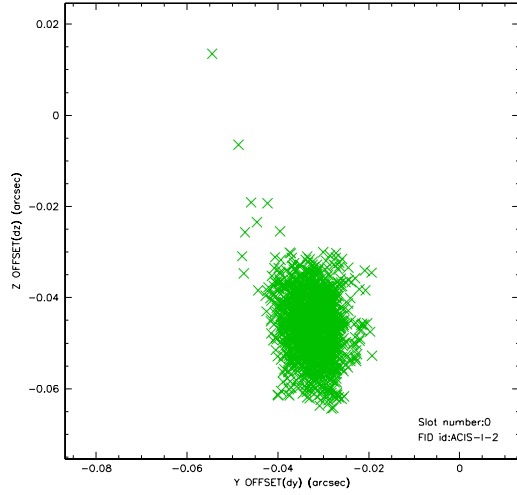


2.4.5 Slot 7

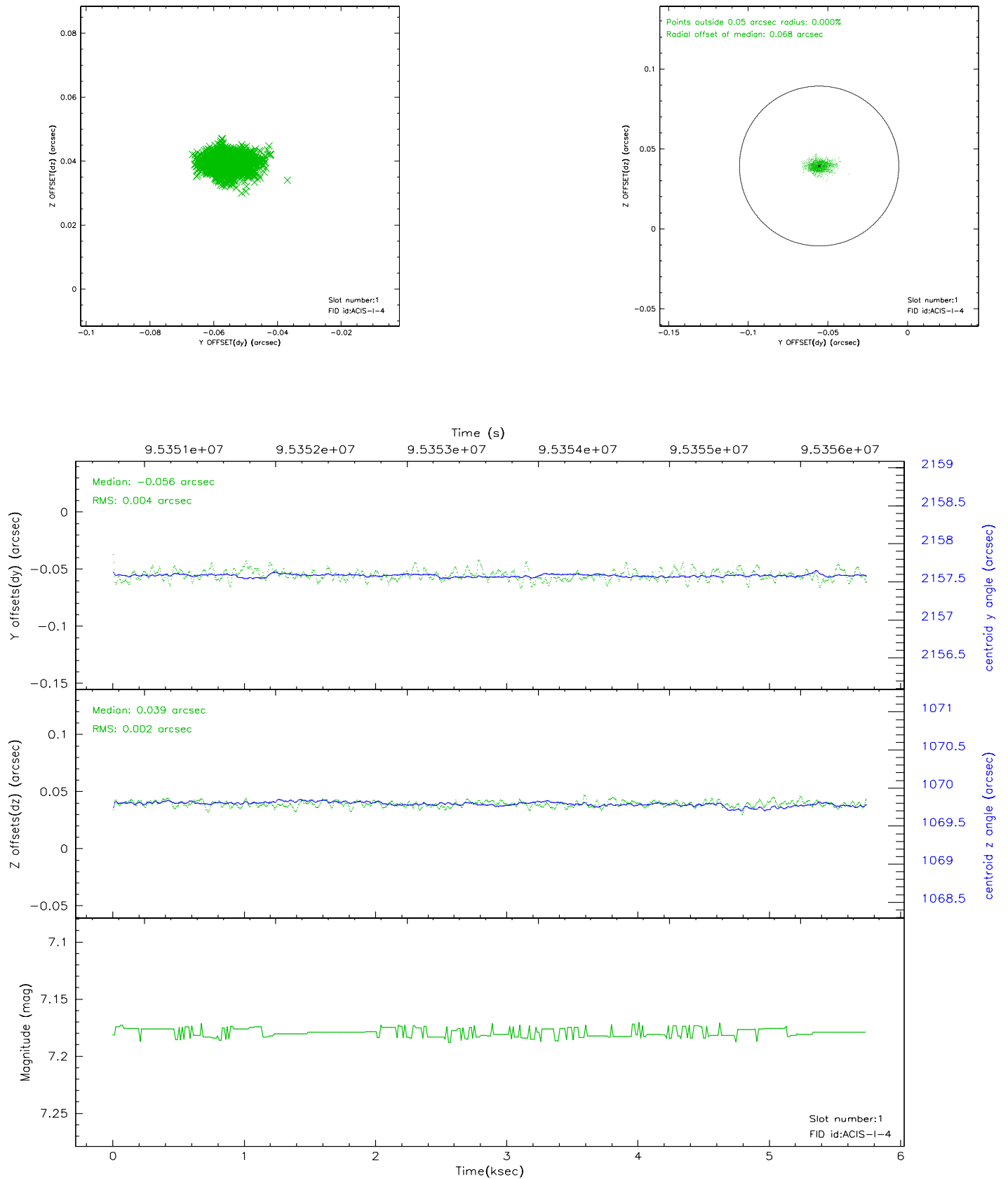


2.5 FID Slots

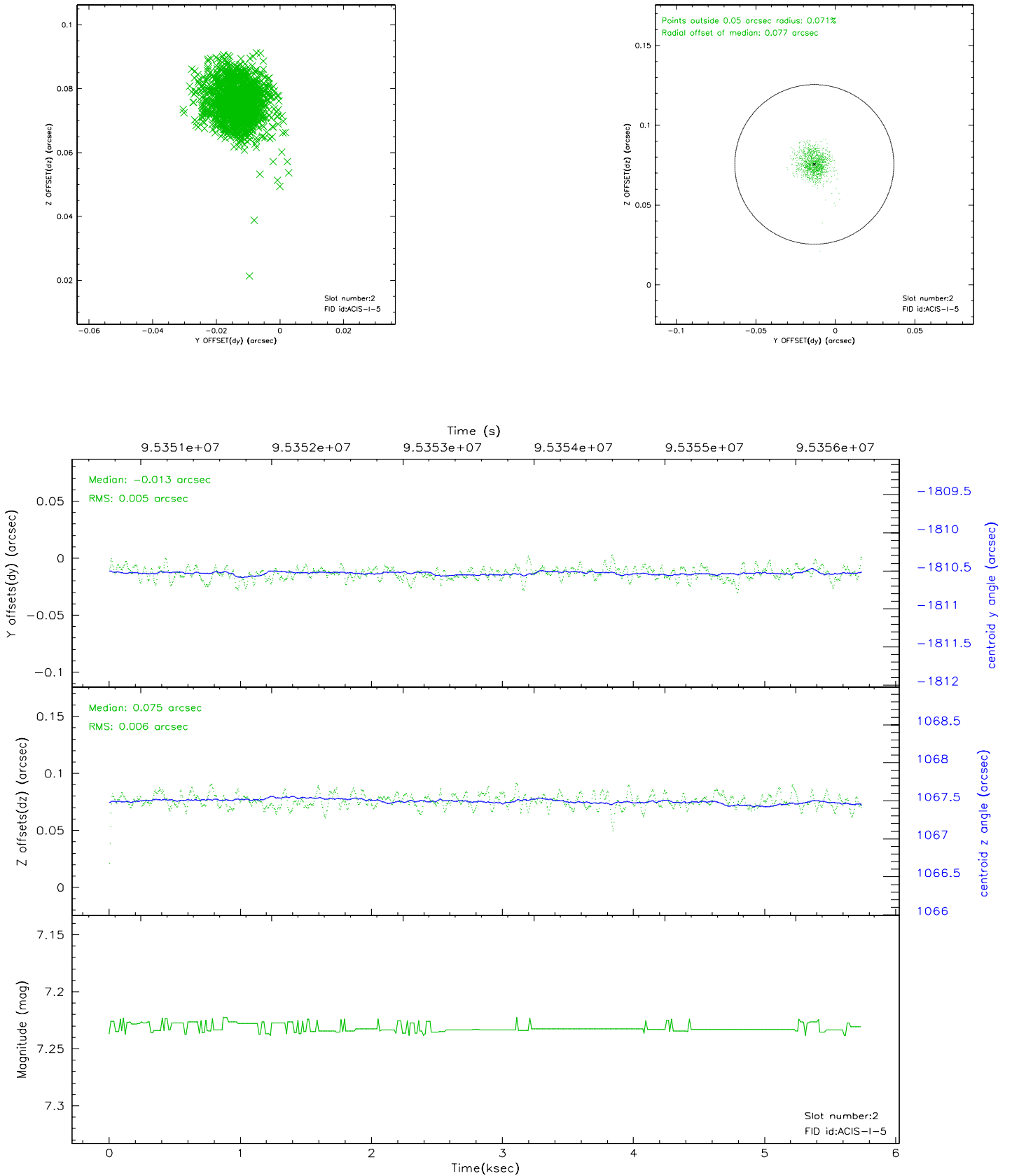
2.5.1 Slot 0



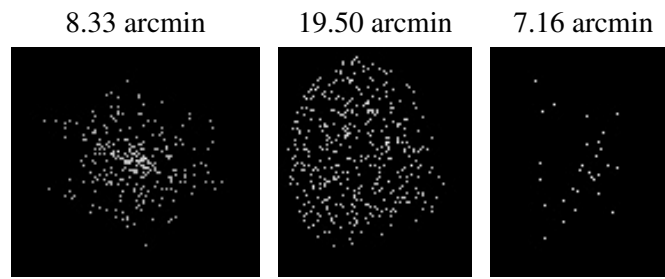
2.5.2 Slot 1



2.5.3 Slot 2



3 Point Sources



A Summary

A.1 Status

V&V Scientist	Jen Lauer
V&V Date (YYYY-MM-DD)	2006.11.02
V&V Edition	1
V&V Disposition and Status	OK
V&V Charge Time	4.755

A.2 Comments