

V&V Reference Report

L2 ASCDS Version : 7.6.8.1

Observation 2253 - L2 Version 001
Chandra X-Ray Center

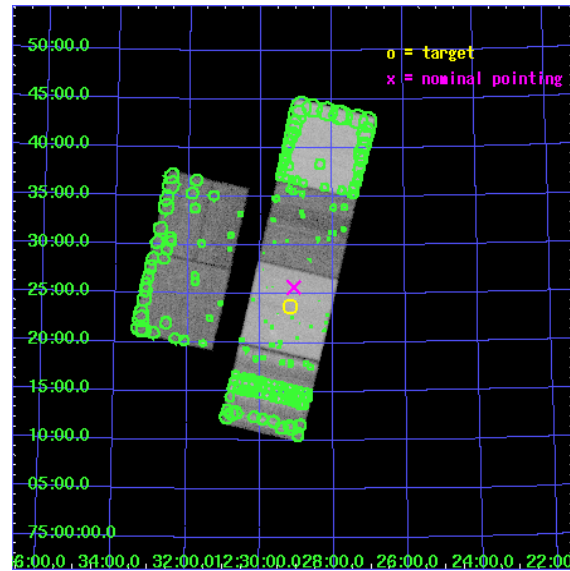
L2 Processing Date : Aug 26 2006

Contents

1	Front	2
2	OBI	3
2.1	OBI	3
2.1.1	Images	3
2.1.2	Bias	3
2.1.3	Parameters	4
2.1.4	Events	4
2.2	Compared Parameters	5
2.3	Aspect	6
2.4	Star Slots	9
2.4.1	Slot 3	9
2.4.2	Slot 4	10
2.4.3	Slot 5	11
2.4.4	Slot 6	12
2.4.5	Slot 7	13
2.5	FID Slots	14
2.5.1	Slot 0	14
2.5.2	Slot 1	15
2.5.3	Slot 2	16
3	Point Sources	17
A	Summary	18
A.1	Status	18
A.2	Comments	18

1 Front

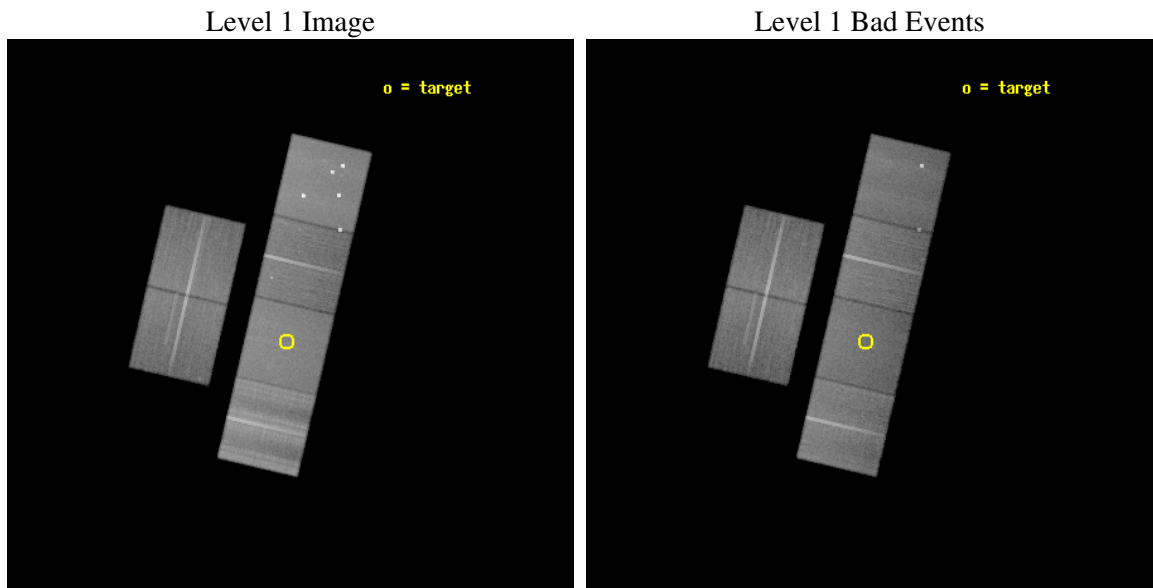
seq_num	900080
obs_id	2253
title	DIFFUSE X-RAY EMISSION FROM THE MISSING BARYONS IN THE UNIVERSE
observer	DR. Joel Bregman
object	CHVC125
dtcycle	0
cycle	P
ra_targ	187.291667
dec_targ	75.395833
ra_nom	187.26863029315
dec_nom	75.428601535334
roll_nom	103.11884373739
revision	2
ontime	48009.600044712
livetime	47401.673581036
ontime2	47999.877114013
ontime3	48006.359104365
ontime5	48009.600044712
ontime6	48009.600044712
ontime7	48009.600044712
ontime8	47999.877143964
l2events	588285



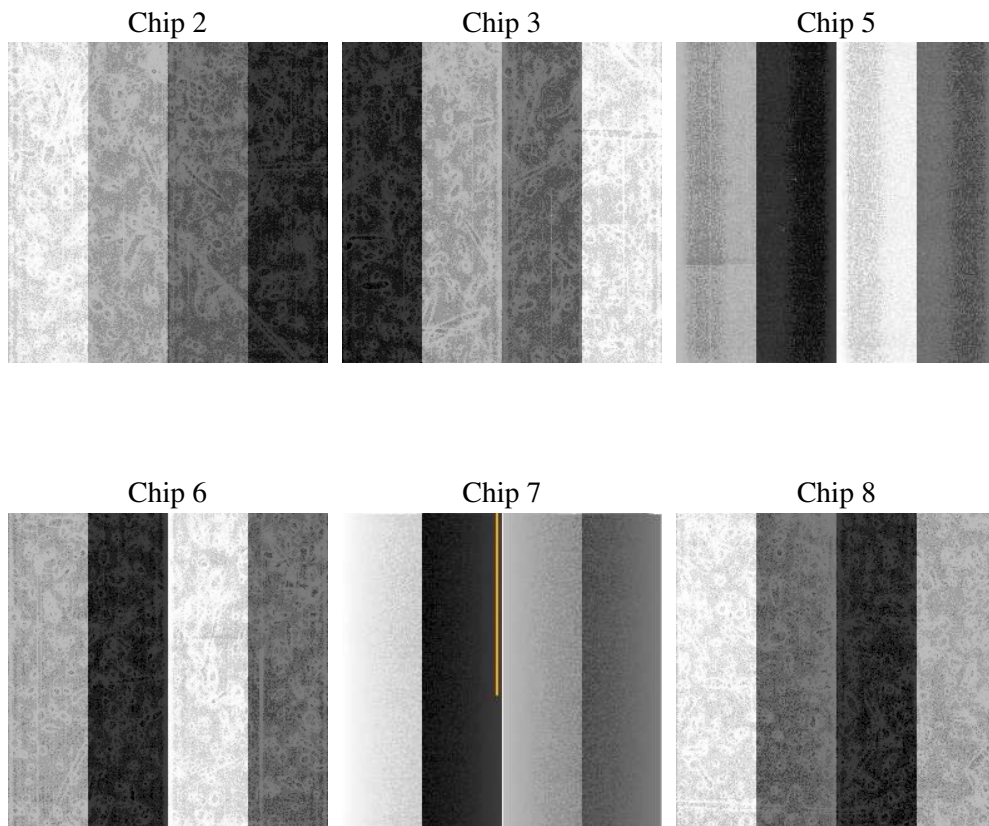
2 OBI

2.1 OBI

2.1.1 Images



2.1.2 Bias



2.1.3 Parameters

obi_num	1
ascdsver	7.6.8.1
caldsver	3.2.3
date	2006-08-26T13:48:22
revision	2

sched_exp_time	47869.198000
ontime	49879.011486202
ontime2	49869.288545474
ontime3	49875.770565763
ontime5	49879.01150611
ontime6	49879.011476174
ontime7	49879.011486202
ontime8	49869.288575426
l1events	2564531

2.1.4 Events

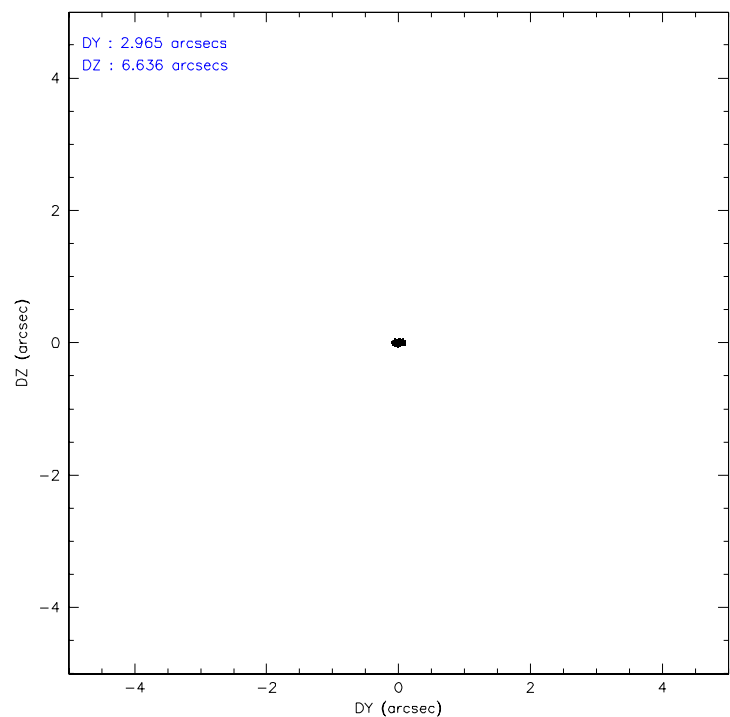
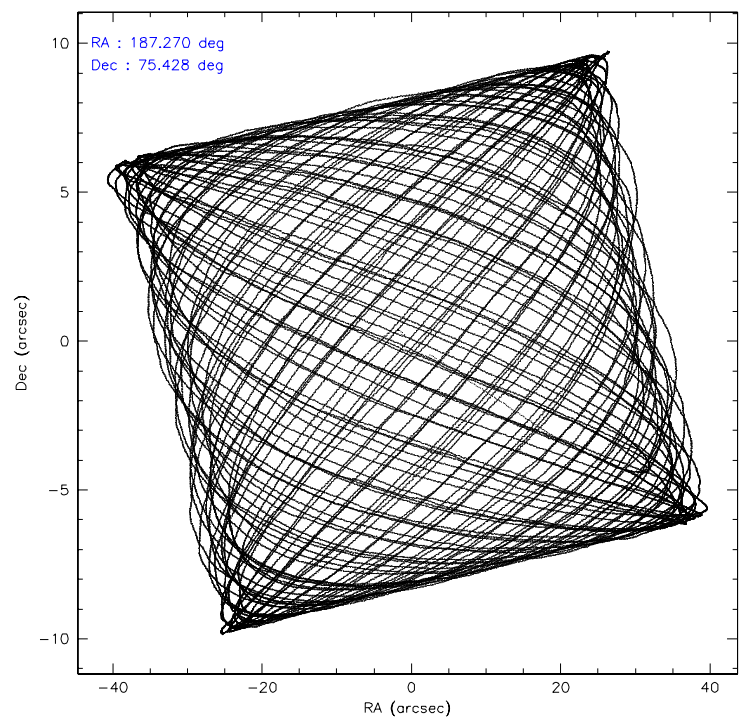
	ccd 2	ccd 3	ccd 5	ccd 6	ccd 7	ccd 8
level 1 events	362973	335669	525926	353796	435185	550982
rejected events	313749	289321	271800	303208	260985	347860
rejected %	86%	86%	51%	85%	59%	63%

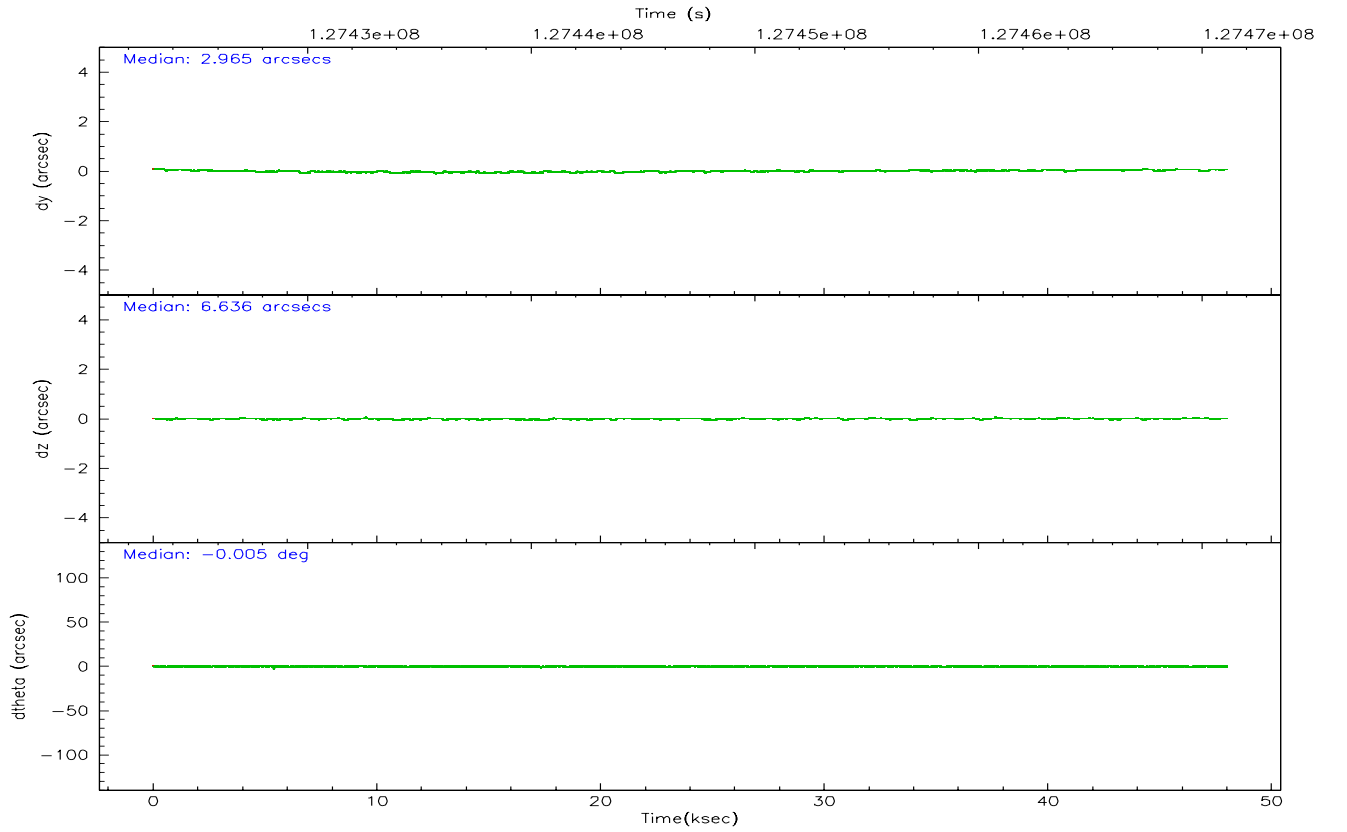
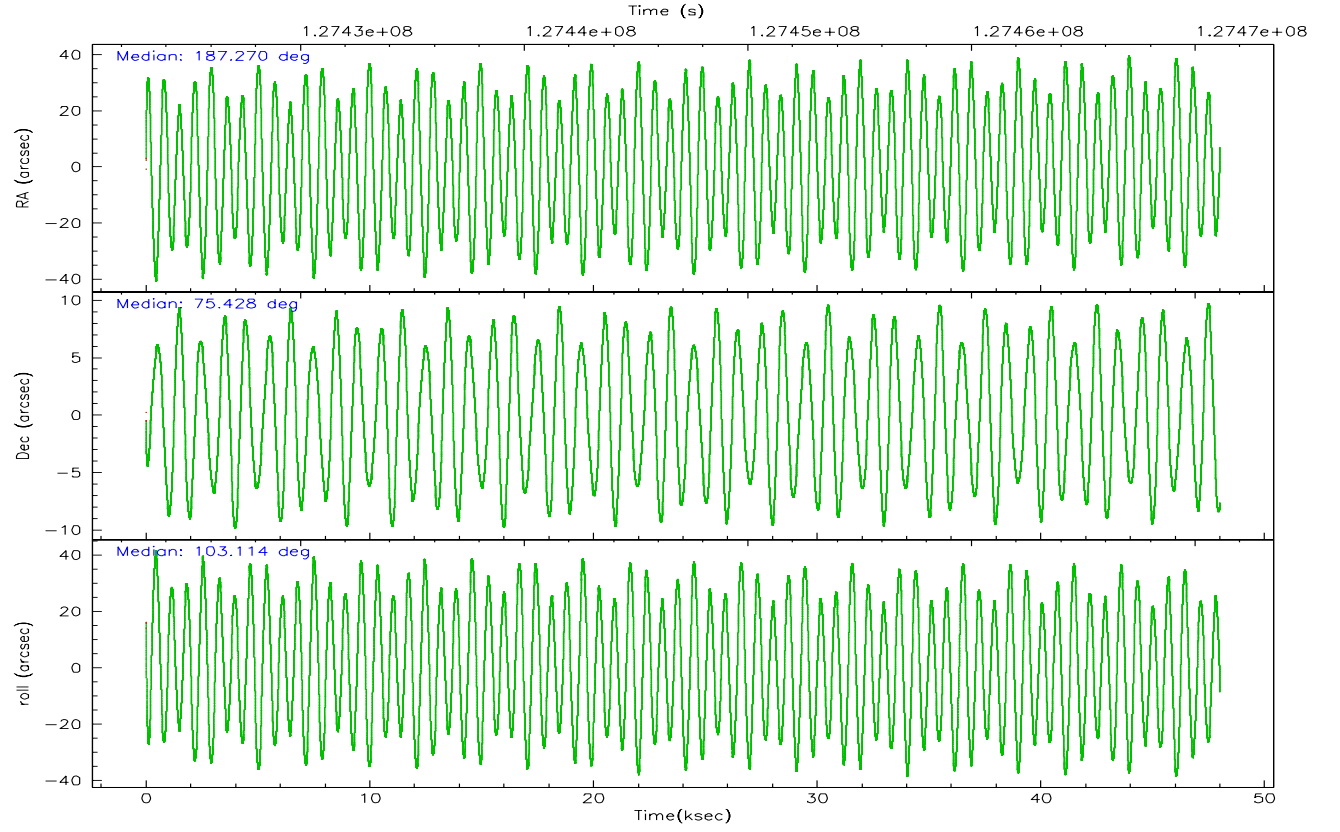
	ccd 2	ccd 3	ccd 5	ccd 6	ccd 7	ccd 8
grade 0 events	22665	20559	49934	22860	11714	68200
	6%	6%	9%	6%	2%	12%
grade 1 events	178	189	799	170	292	513
	0%	0%	0%	0%	0%	0%
grade 2 events	12209	11170	76692	12149	45964	35234
	3%	3%	14%	3%	10%	6%
grade 3 events	3555	3750	6467	3994	9609	32313
	0%	1%	1%	1%	2%	5%
grade 4 events	4033	3740	5479	3825	9335	28673
	1%	1%	1%	1%	2%	5%
grade 5 events	10825	11873	22954	13032	26762	18365
	2%	3%	4%	3%	6%	3%
grade 6 events	8689	8905	124430	9623	104259	46476
	2%	2%	23%	2%	23%	8%
grade 7 events	300819	275483	239171	288143	227250	321208
	82%	82%	45%	81%	52%	58%

2.2 Compared Parameters

Parameter	Planned	Actual	Parameter	Planned	Actual
Instrument	ACIS	ACIS	Obspar format version number	6	6
Detector	ACIS-235678	ACIS-235678	Obspar file type	PREDICTED	ACTUAL
Grating	NONE	NONE	Obspar update status	NONE	UPDATED
Data mode	VFAINT	VFAINT	On-chip summing requested	N	N
Observation mode	POINTING	POINTING	Subarray requested	NONE	NONE
Pointing RA	187.343553	187.2686302931481	Alternating exposures requested	N	N
Pointing Dec	75.408899	75.42860153533421	Primary exposure time	0.000000	3.2
Pointing Roll	102.889702	103.1188437373869			
SIM focus pos (mm)	-0.684267	-0.6828225247311905			
SIM defocus (mm)	0	0.001444936568705701			
SIM translation stage pos (mm)	-190.132523	-190.1425803651734			
SIM translation stage offset (mm)	0	0.01005778216563158			
Observation start time	127423250.184000	127421239.55971			
Observation start date	2002-01-14T19:19:46	2002-01-14T18:47:19			
Observation end time	127471120.184000	127471434.32423			
Observation end date	2002-01-15T08:37:36	2002-01-15T08:43:54			
Read mode	TIMED	TIMED			

2.3 Aspect



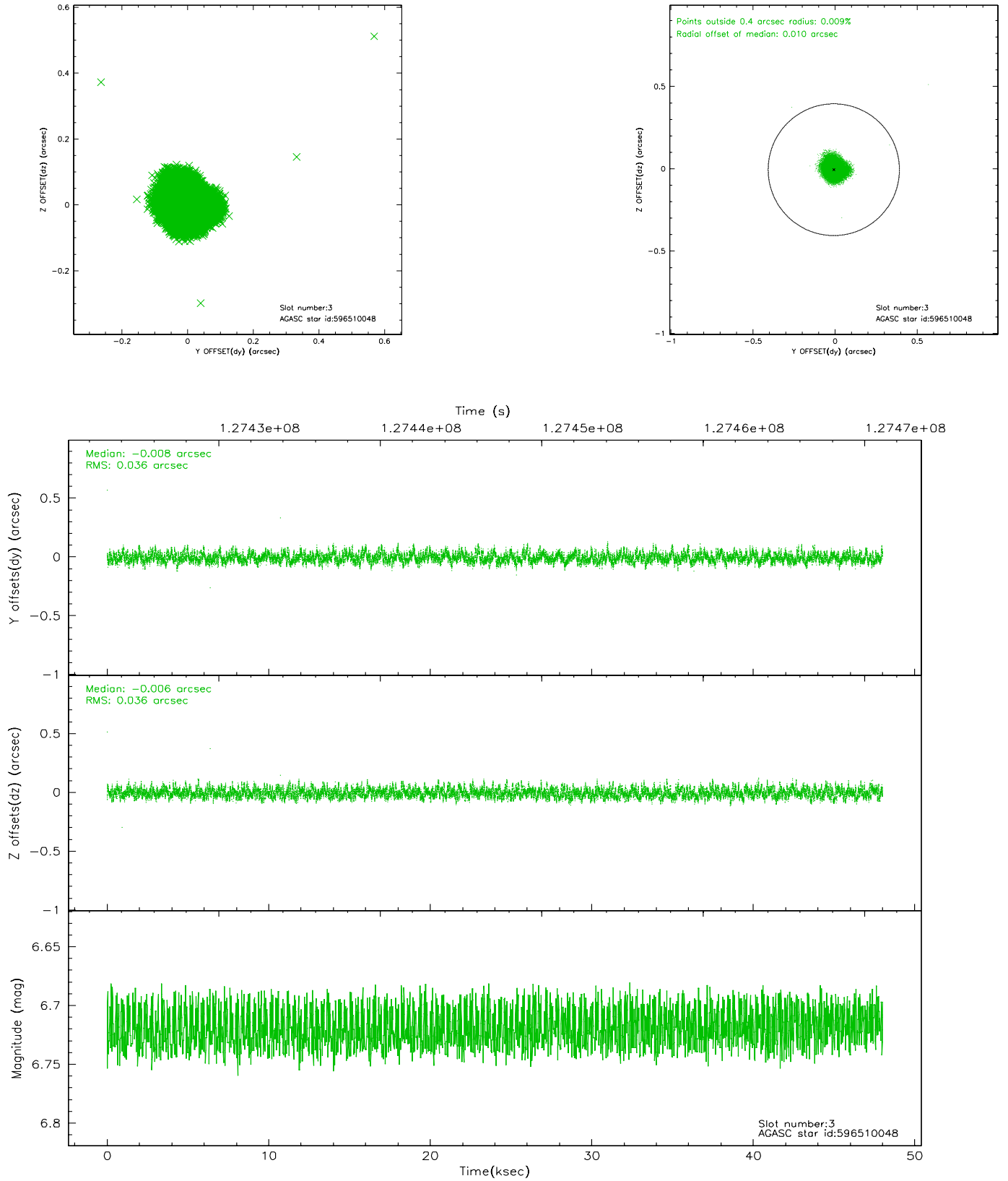


Slot Statistics

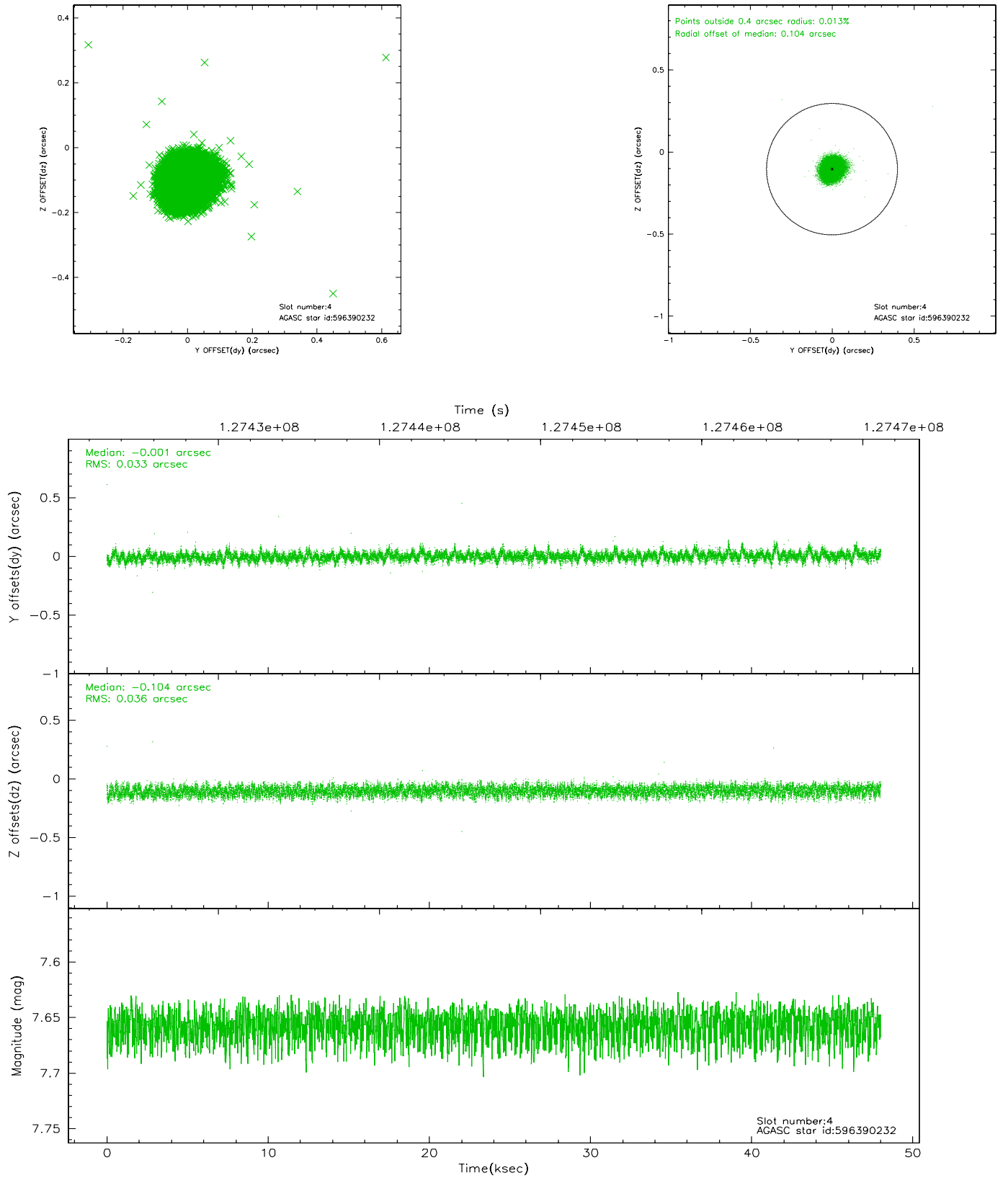
slot	status	id	mag	n_pts	med_dy	med_dz	dr1	dr2	ra	dec	mean_y	mean_z
0	FID	ACIS-S-2	7.12	11710	-0.014	0.029	0.007	0.011	0.000000	0.000000	-755.59	-1727.72
1	FID	ACIS-S-4	7.20	11712	-0.064	-0.001	0.005	0.009	0.000000	0.000000	2157.61	180.79
2	FID	ACIS-S-5	7.24	11712	0.047	-0.020	0.007	0.011	0.000000	0.000000	-1808.42	174.37
3	GUIDE	596510048	6.72	23424	-0.008	-0.006	0.055	0.085	188.427937	75.212520	-901.91	-814.87
4	GUIDE	596390232	7.66	23422	-0.001	-0.104	0.052	0.082	186.553365	75.719145	1250.30	434.45
5	GUIDE	596512320	8.47	23421	-0.015	0.101	0.075	0.120	188.688284	76.018788	1893.12	-1631.84
6	GUIDE	596521816	9.02	23414	-0.014	-0.000	0.094	0.153	190.182501	75.002368	-1953.94	-2264.34
7	GUIDE	596378936	9.32	23406	0.038	0.013	0.074	0.121	185.905753	75.866397	1902.81	861.86

2.4 Star Slots

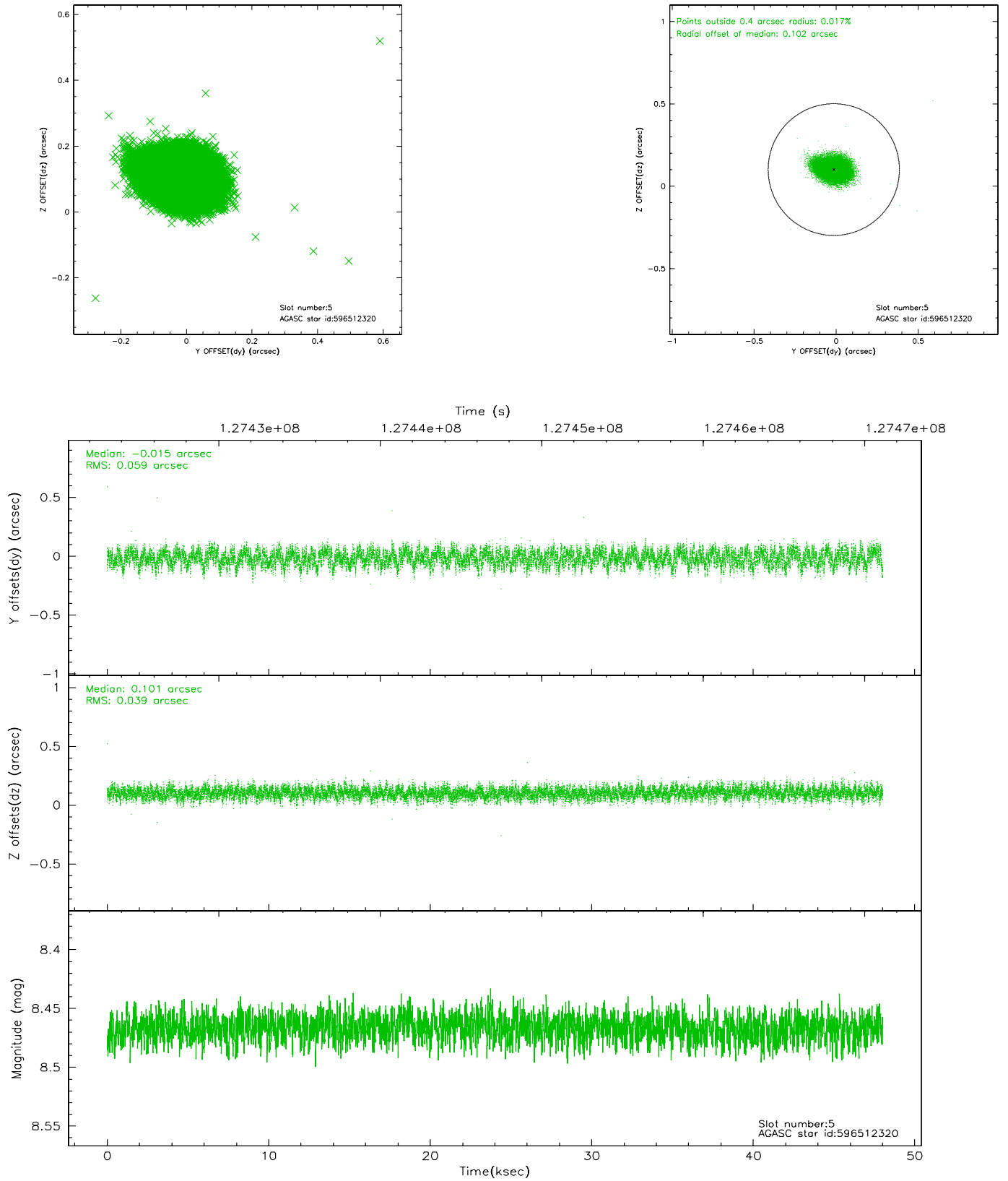
2.4.1 Slot 3



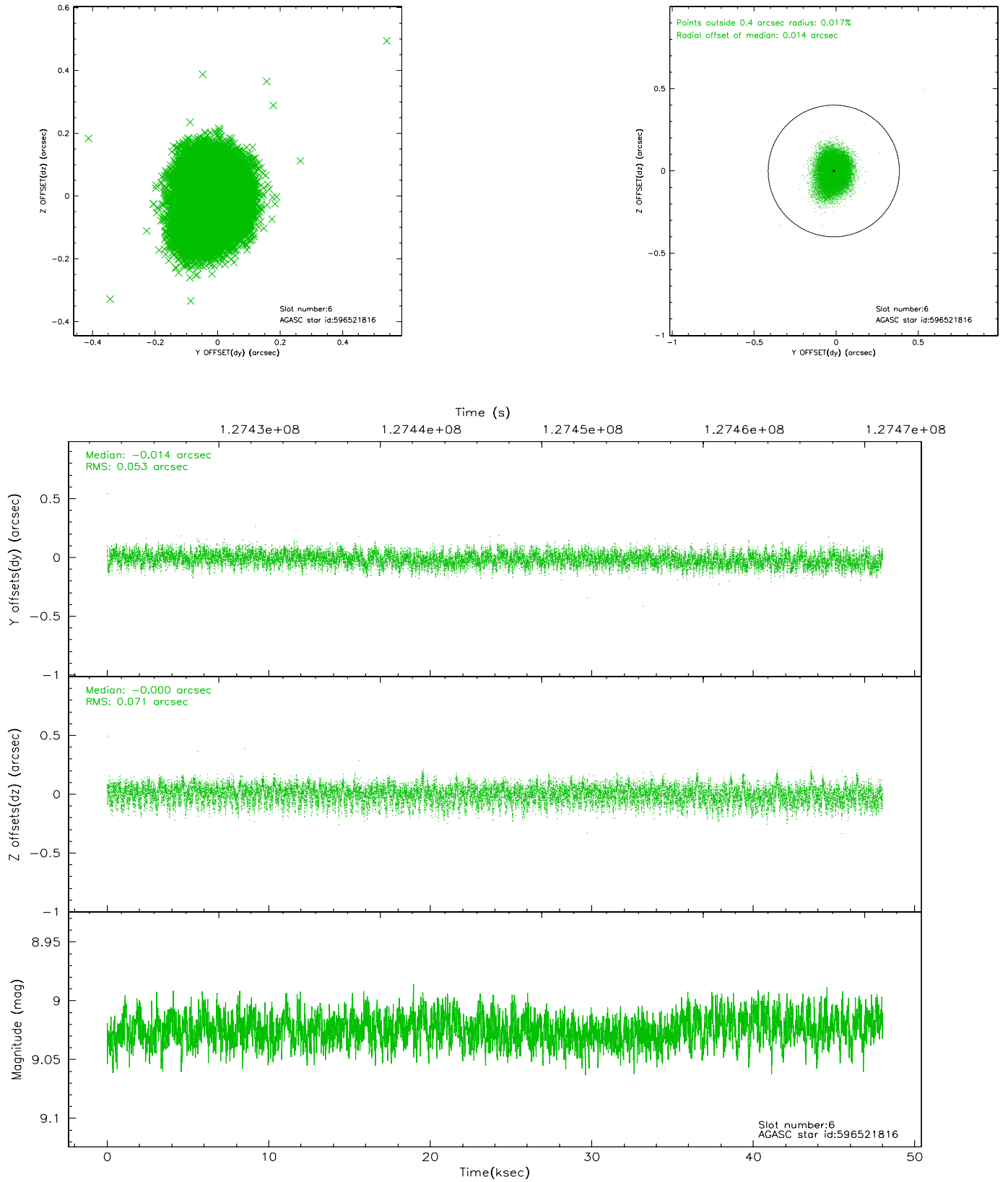
2.4.2 Slot 4



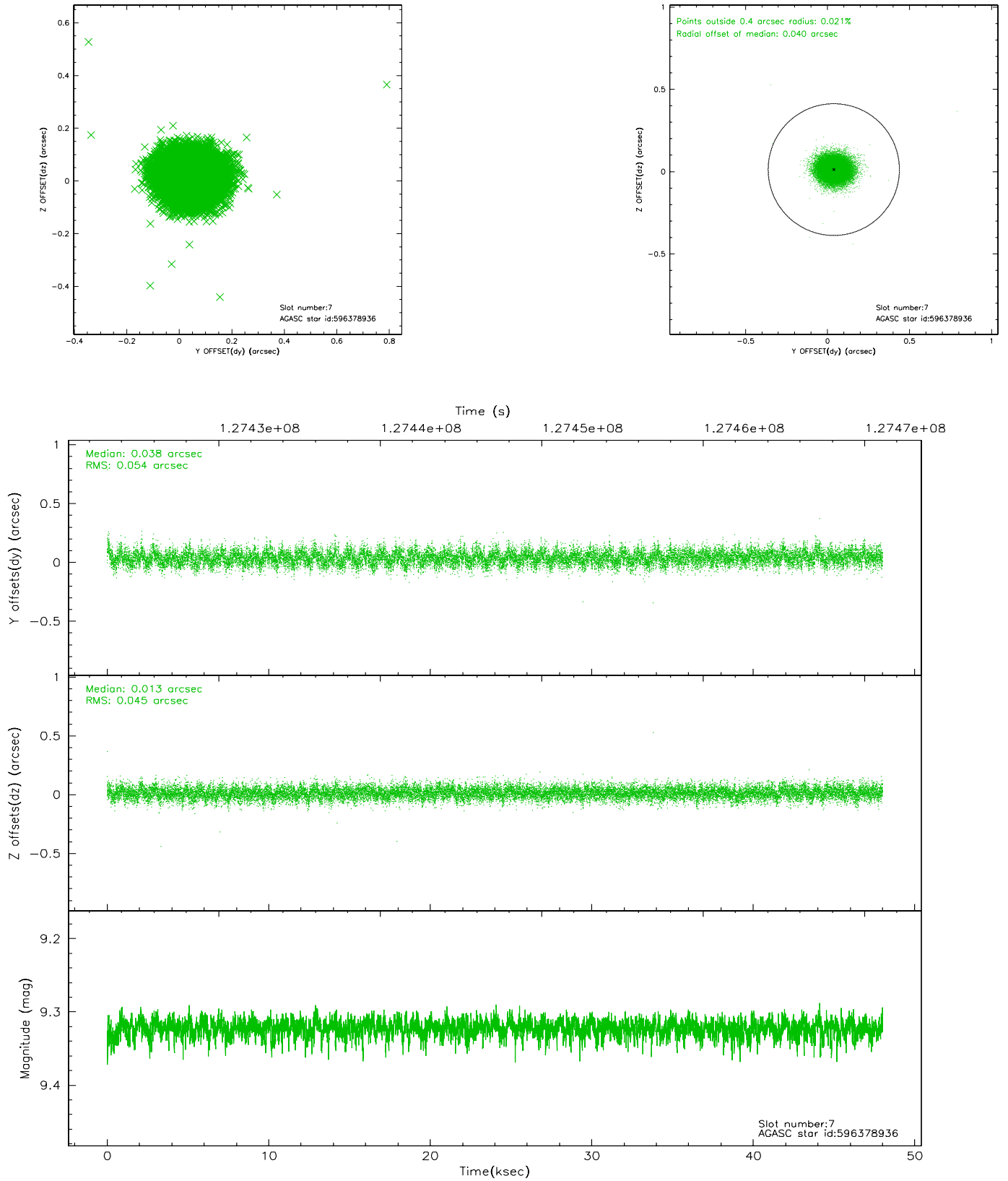
2.4.3 Slot 5



2.4.4 Slot 6

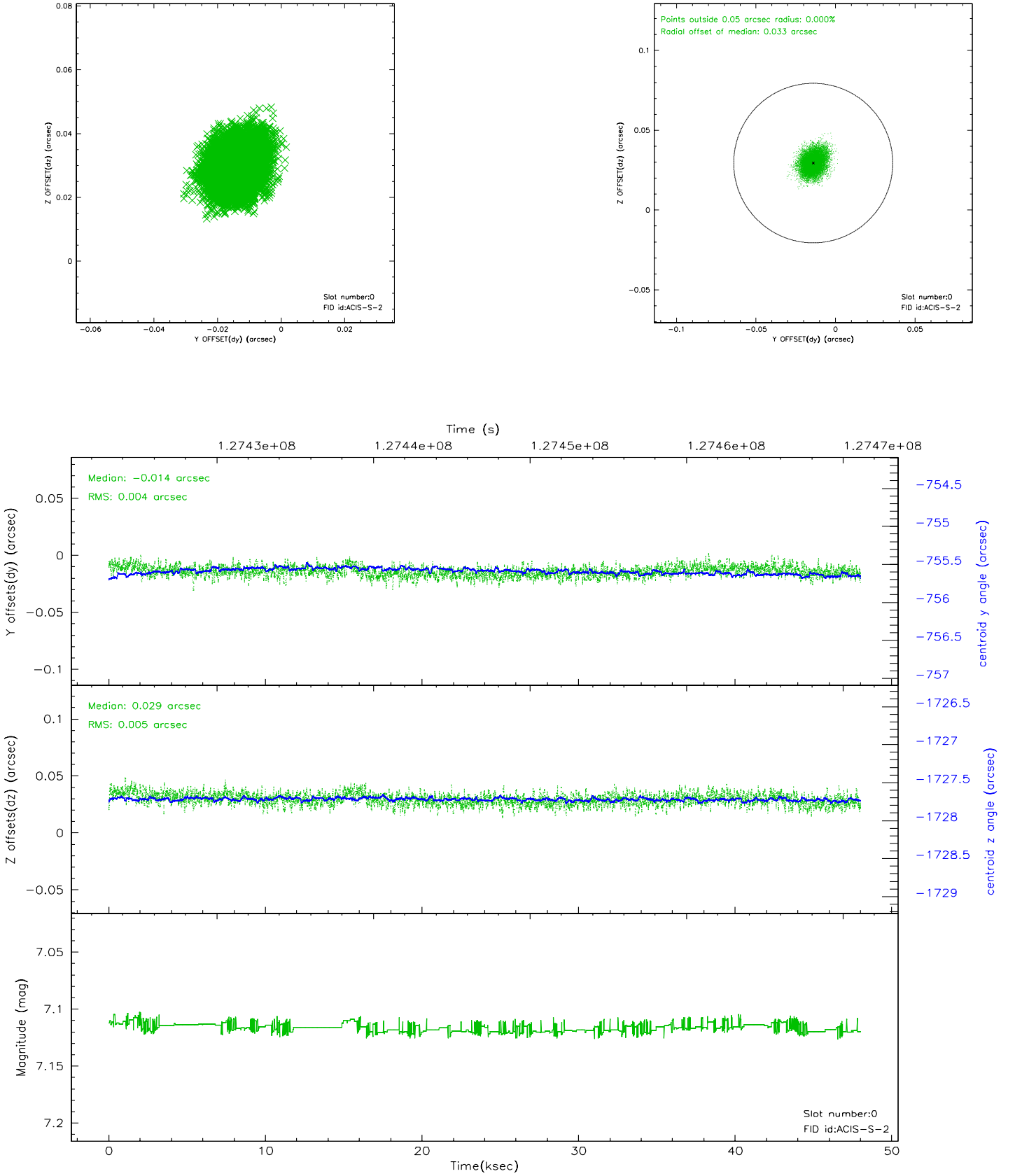


2.4.5 Slot 7

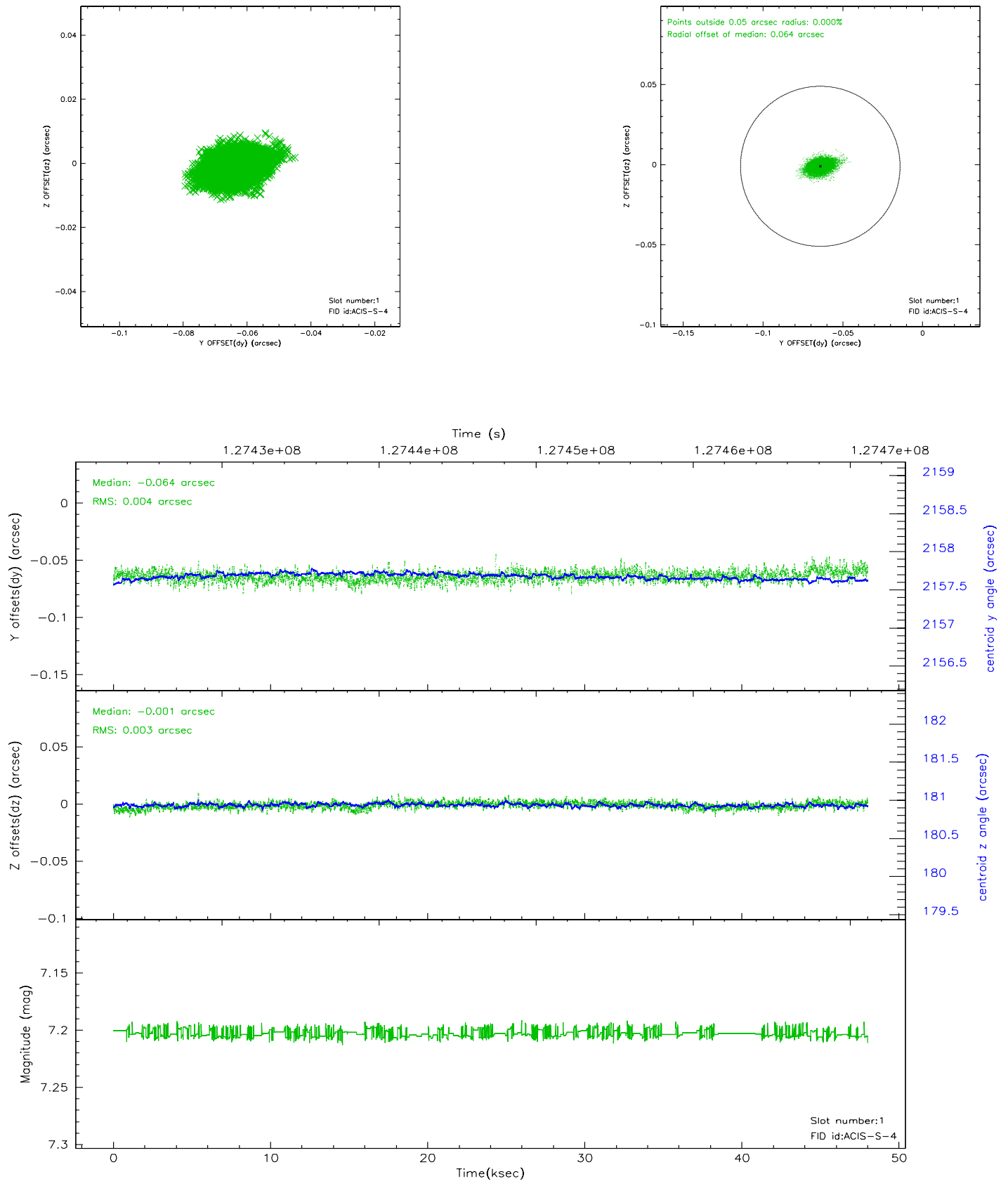


2.5 FID Slots

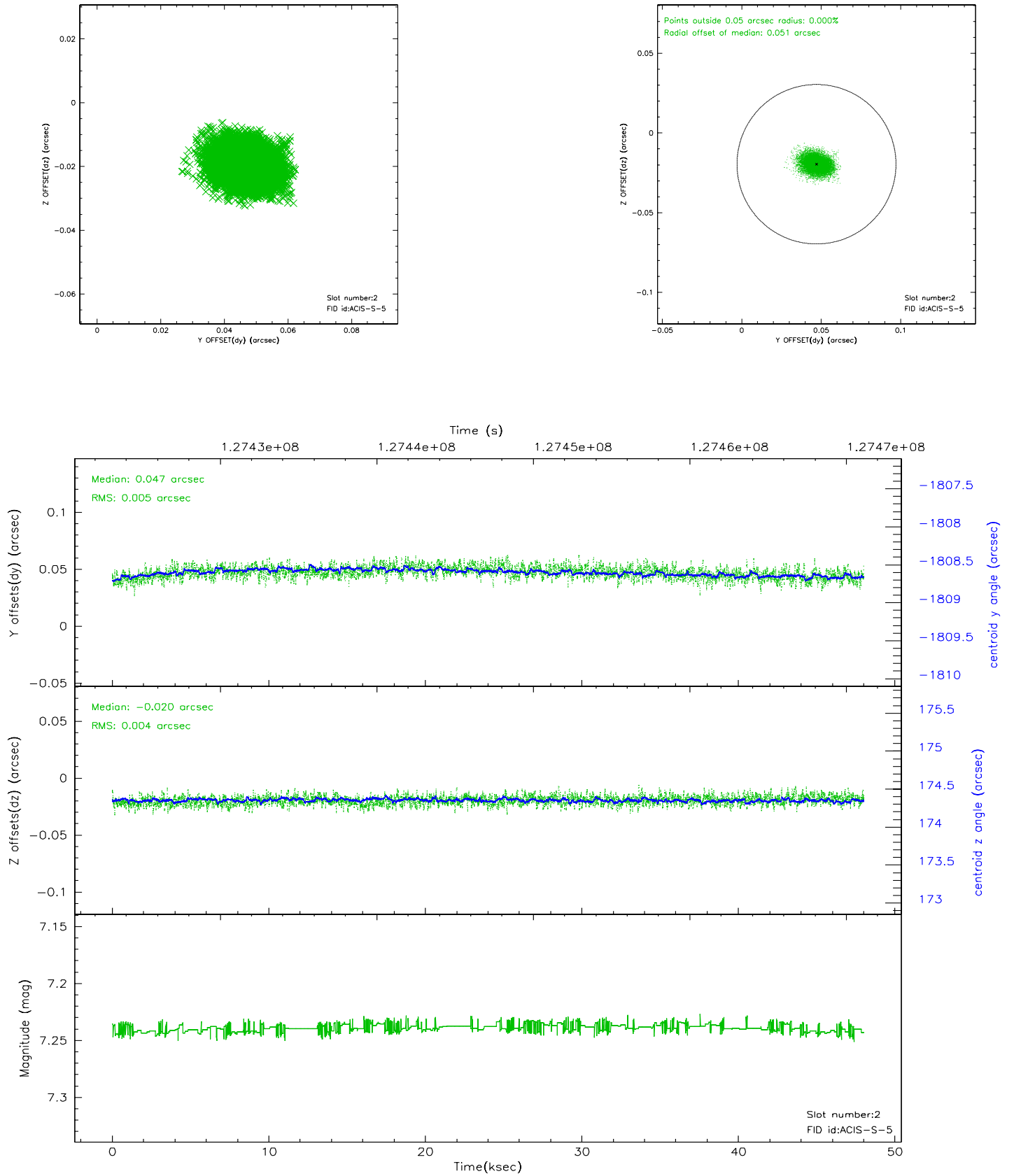
2.5.1 Slot 0



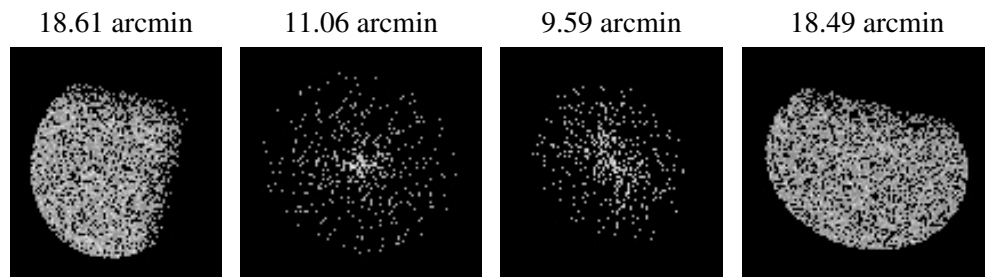
2.5.2 Slot 1



2.5.3 Slot 2



3 Point Sources



A Summary

A.1 Status

V&V Scientist	Beth Sundheim
V&V Date (YYYY-MM-DD)	2006.08.28
V&V Edition	1
V&V Disposition and Status	OK
V&V Charge Time	48.009

A.2 Comments