

# V&V Reference Report

## L2 ASCDS Version : 7.6.9

Observation 2249 - L2 Version 001  
Chandra X-Ray Center

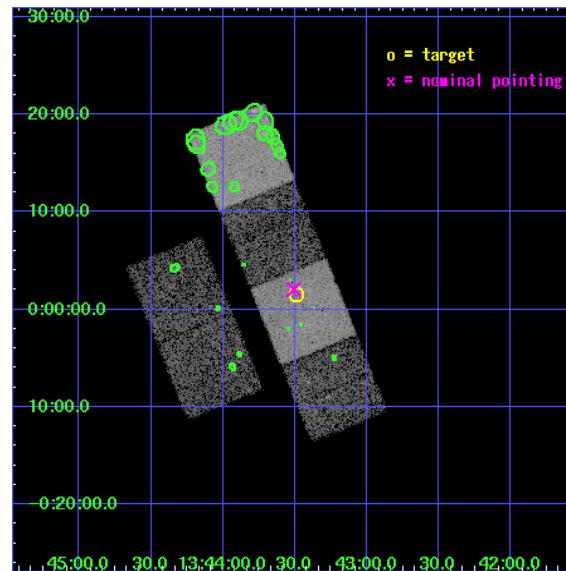
L2 Processing Date : Nov 2 2006

## Contents

<b>1</b>	<b>Front</b>	<b>2</b>
<b>2</b>	<b>OBI</b>	<b>3</b>
2.1	OBI . . . . .	3
2.1.1	Images . . . . .	3
2.1.2	Bias . . . . .	3
2.1.3	Parameters . . . . .	4
2.1.4	Events . . . . .	4
2.2	Compared Parameters . . . . .	5
2.3	Aspect . . . . .	6
2.4	Star Slots . . . . .	9
2.4.1	Slot 3 . . . . .	9
2.4.2	Slot 4 . . . . .	10
2.4.3	Slot 5 . . . . .	11
2.4.4	Slot 6 . . . . .	12
2.4.5	Slot 7 . . . . .	13
2.5	FID Slots . . . . .	14
2.5.1	Slot 0 . . . . .	14
2.5.2	Slot 1 . . . . .	15
2.5.3	Slot 2 . . . . .	16
<b>3</b>	<b>Point Sources</b>	<b>17</b>
<b>A</b>	<b>Summary</b>	<b>18</b>
A.1	Status . . . . .	18
A.2	Comments . . . . .	18

# 1 Front

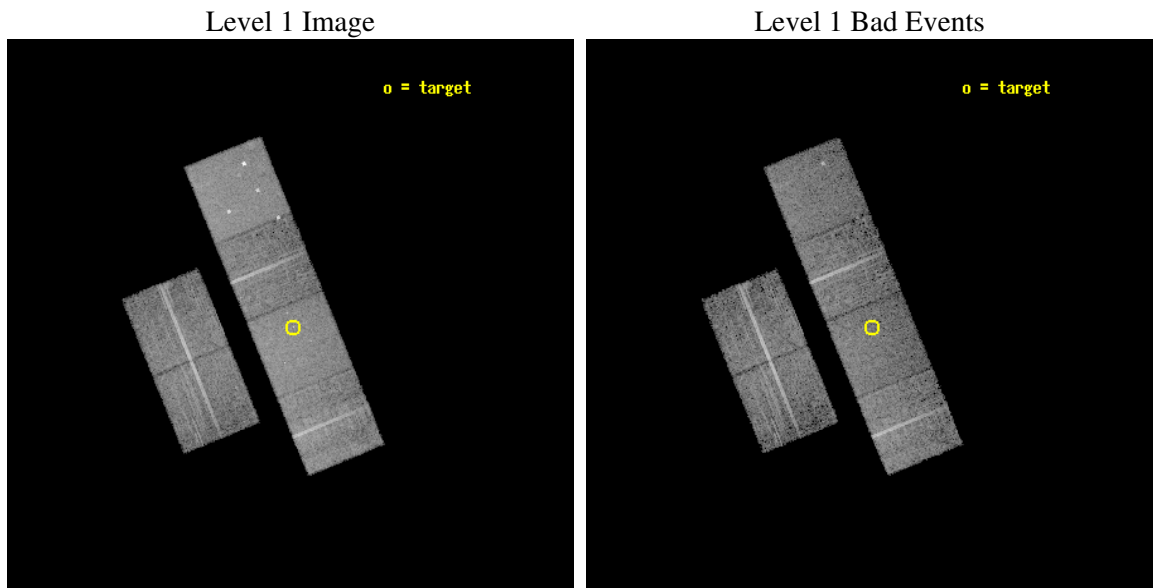
seq_num	900076
obs_id	2249
title	THE NATURE OF NARROW-LINE, FIR-LUMINOUS, X-RAY GALAXIES
observer	PROFESSOR TOM SHANKS
object	RXJ13434+0001
dtcycle	0
cycle	P
ra_targ	205.871667
dec_targ	0.025833
ra_nom	205.87698038137
dec_nom	0.034160599494705
roll_nom	67.776807542086
revision	2
ontime	9948.8000092655
livetime	9822.8223131001
ontime2	9948.8000092655
ontime3	9948.8000092655
ontime5	9948.8000092655
ontime6	9948.8000092655
ontime7	9948.8000092655
ontime8	9948.8000092655
l2events	90470



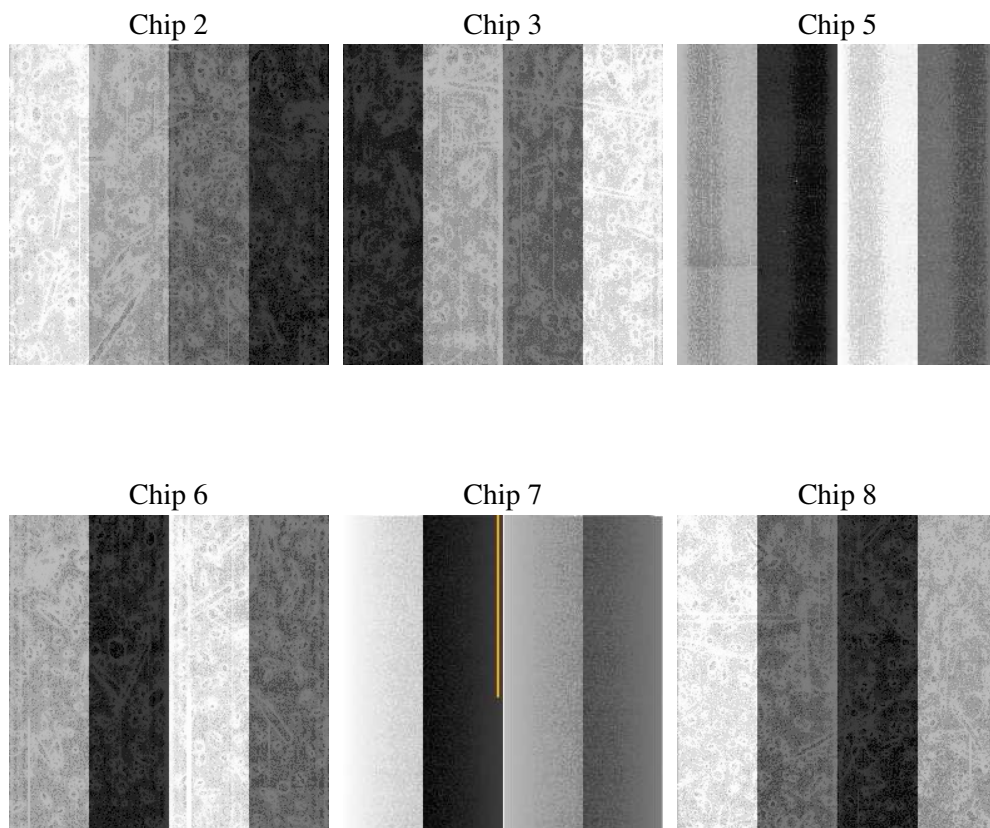
## 2 OBI

### 2.1 OBI

#### 2.1.1 Images



#### 2.1.2 Bias



### 2.1.3 Parameters

obi_num	0
ascdsver	7.6.9
caldbver	3.2.3
date	2006-11-02T13:07:32
revision	2

sched_exp_time	10000.000000
ontime	9956.3447920084
ontime2	9956.3447920084
ontime3	9956.3447920084
ontime5	9956.3447920084
ontime6	9956.3447920084
ontime7	9956.3447920084
ontime8	9956.3447920084
l1events	420817

### 2.1.4 Events

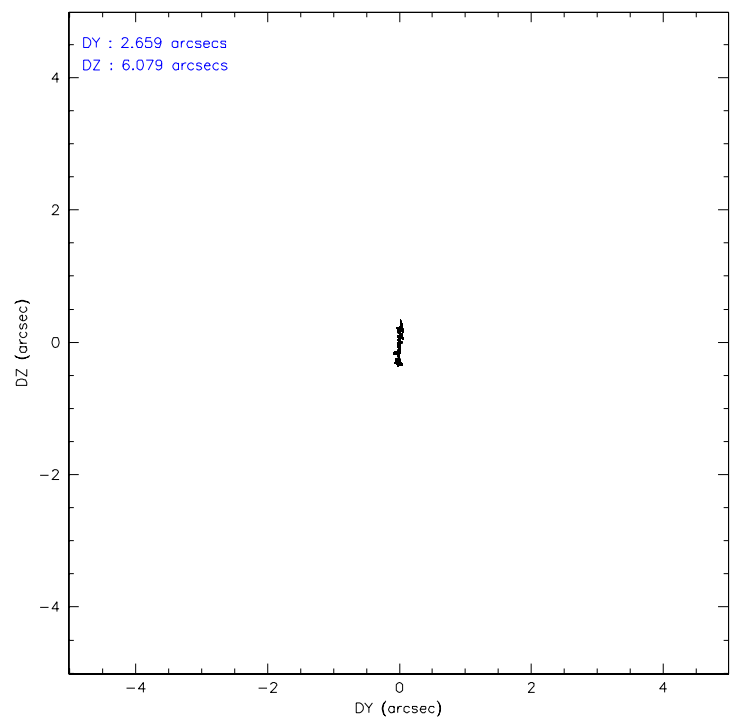
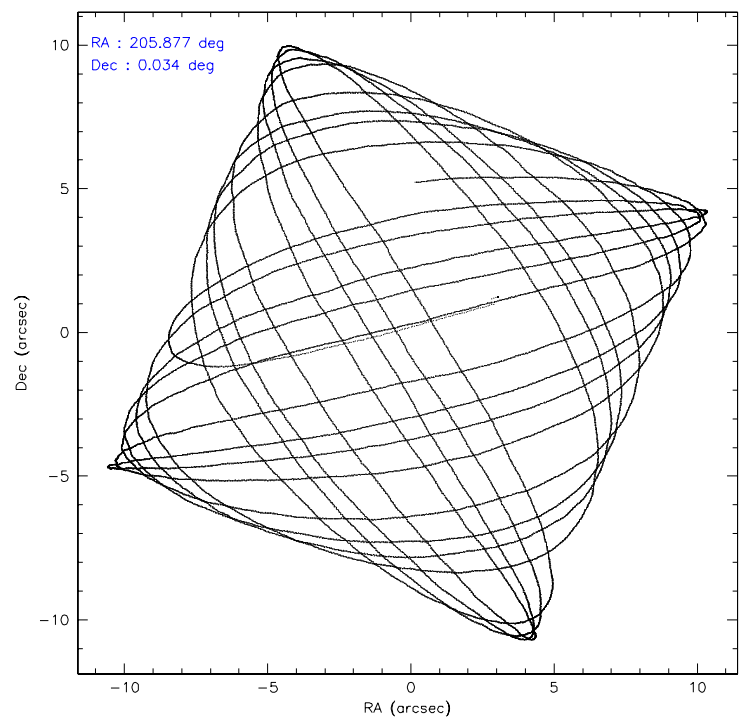
	ccd 2	ccd 3	ccd 5	ccd 6	ccd 7	ccd 8
level 1 events	61793	58141	86686	60310	76765	77122
rejected events	54597	51199	46642	52887	46441	61279
rejected %	88%	88%	53%	87%	60%	79%

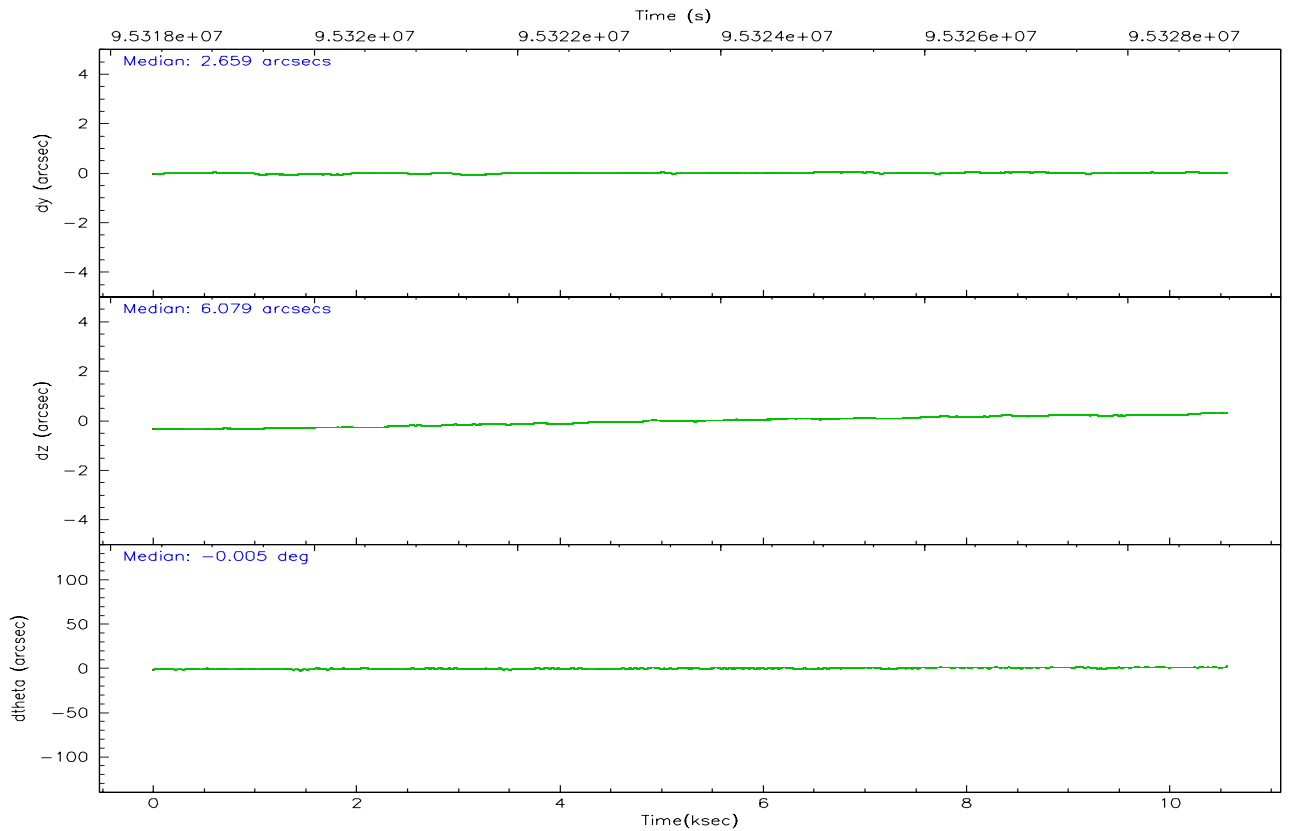
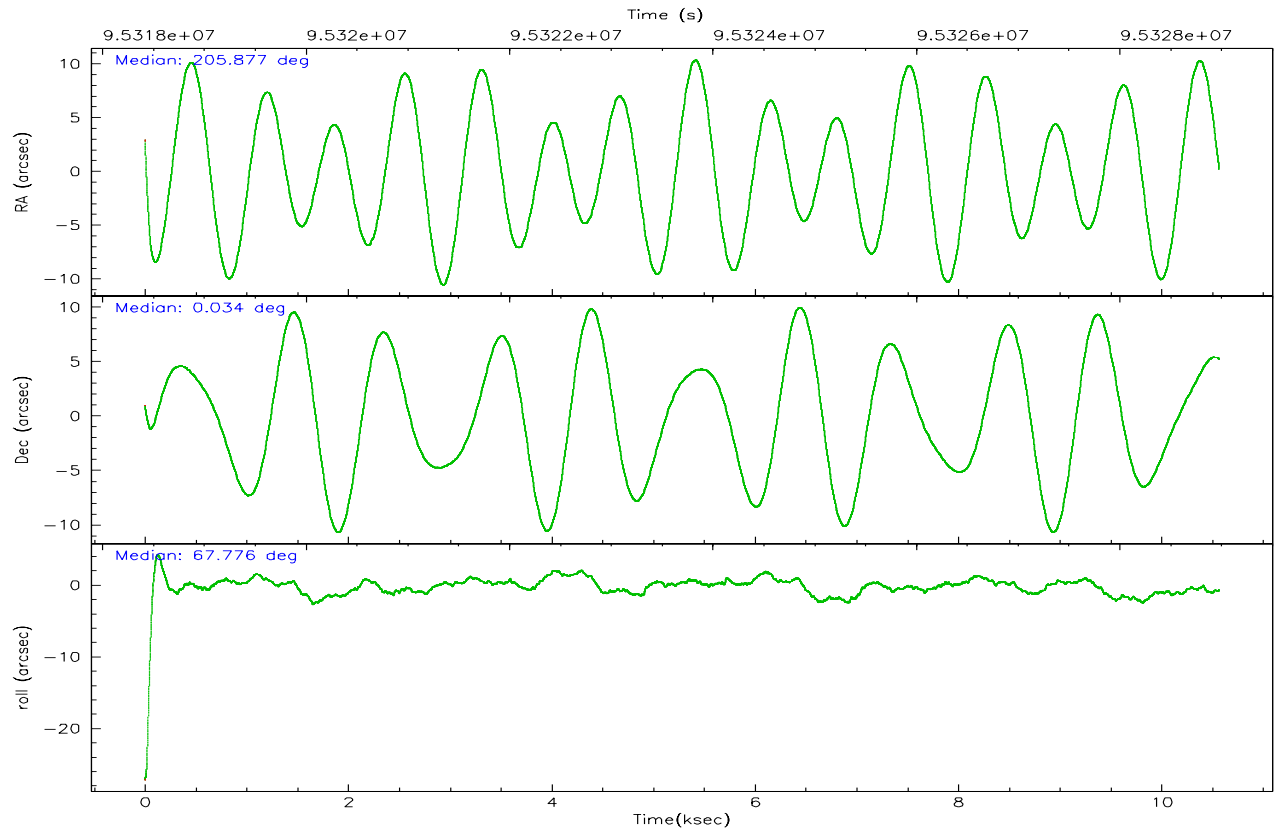
	ccd 2	ccd 3	ccd 5	ccd 6	ccd 7	ccd 8
grade 0 events	3247	3112	5272	3194	2184	5172
	5%	5%	6%	5%	2%	6%
grade 1 events	24	28	133	23	44	42
	0%	0%	0%	0%	0%	0%
grade 2 events	1504	1375	12073	1442	7351	3365
	2%	2%	13%	2%	9%	4%
grade 3 events	642	619	943	722	1703	1700
	1%	1%	1%	1%	2%	2%
grade 4 events	617	643	1029	704	1560	1681
	0%	1%	1%	1%	2%	2%
grade 5 events	2082	2204	4002	2475	4939	3101
	3%	3%	4%	4%	6%	4%
grade 6 events	1191	1196	20751	1366	17542	3935
	1%	2%	23%	2%	22%	5%
grade 7 events	52486	48964	42483	50384	41442	58126
	84%	84%	49%	83%	53%	75%

## 2.2 Compared Parameters

Parameter	Planned	Actual	Parameter	Planned	Actual
Instrument	ACIS	ACIS	Obspar format version number	6	6
Detector	ACIS-235678	ACIS-235678	Obspar file type	PREDICTED	ACTUAL
Grating	NONE	NONE	Obspar update status	NONE	UPDATED
Data mode	FAINT	FAINT	Number of optional ACIS chips dropped	0	0
Observation mode	POINTING	POINTING	On-chip summing requested	N	N
Pointing RA	205.880886	205.8769803813651	Subarray requested	NONE	NONE
Pointing Dec	0.007076	0.03416059949470453	Alternating exposures requested	N	N
Pointing Roll	67.620213	67.77680754208575	Primary exposure time	0.000000	3.2
SIM focus pos (mm)	-0.684267	-0.6828225247311905			
SIM defocus (mm)	0	0.001444936568705701			
SIM translation stage pos (mm)	-190.132523	-190.1425803651734			
SIM translation stage offset (mm)	0	0.01005778216563158			
Observation start time	95318981.184000	95317820.61267			
Observation start date	2001-01-08T05:28:37	2001-01-08T05:10:20			
Observation end time	95328981.184000	95329115.08810399			
Observation end date	2001-01-08T08:15:17	2001-01-08T08:18:35			
Read mode	TIMED	TIMED			

## 2.3 Aspect





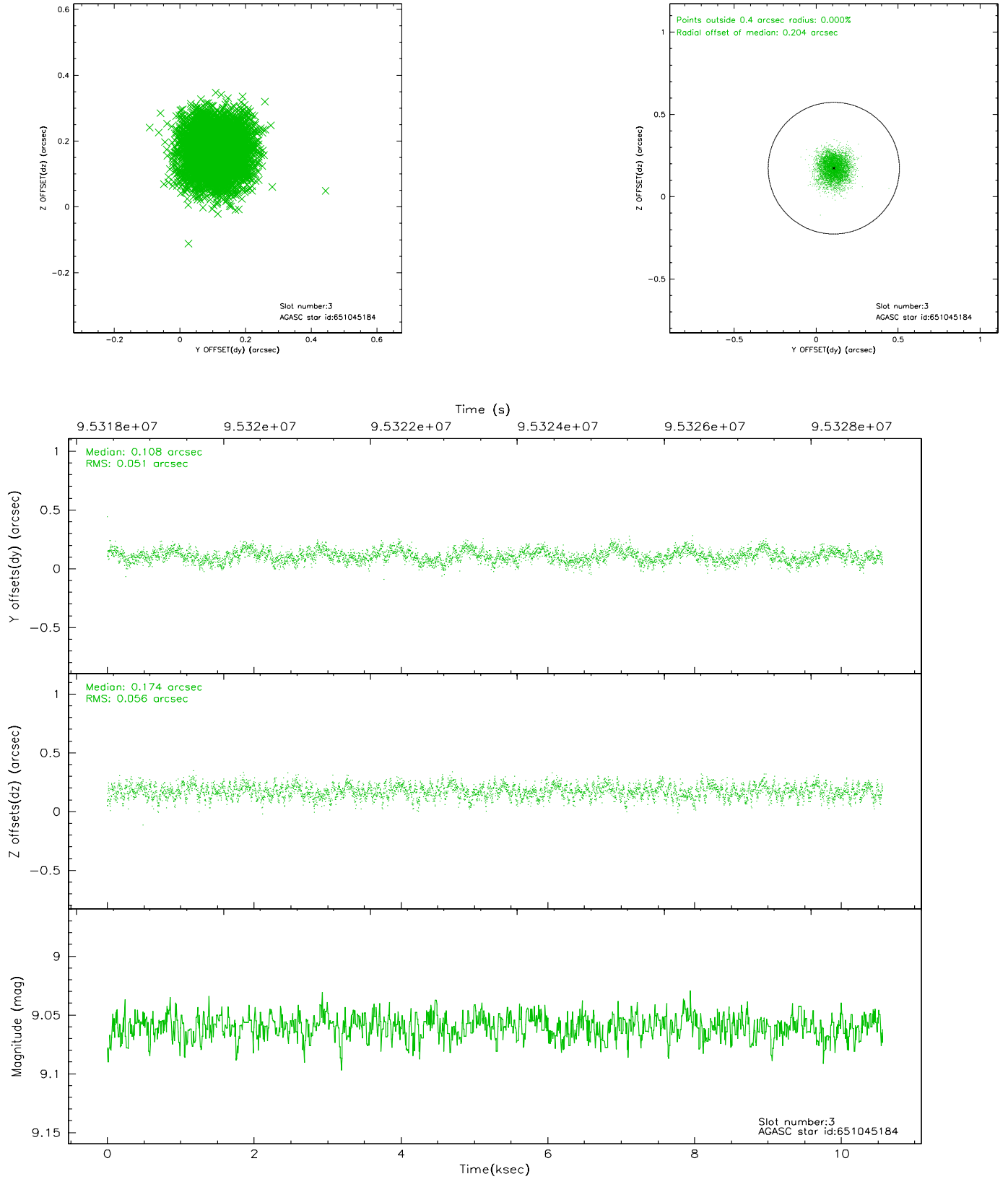
### Slot Statistics

slot	status	id	mag	n_pts	med_dy	med_dz	dr1	dr2	ra	dec	mean_y	mean_z
0	FID	ACIS-S-2	7.11	2578	-0.014	0.040	0.008	0.013	0.000000	0.000000	-755.28	-1727.12
1	FID	ACIS-S-4	7.21	2578	-0.077	-0.004	0.006	0.014	0.000000	0.000000	2157.69	180.85
2	FID	ACIS-S-5	7.24	2578	0.060	-0.028	0.006	0.011	0.000000	0.000000	-1807.44	175.01
3	GUIDE	651045184	9.06	5153	0.108	0.174	0.081	0.130	206.266135	-0.772896	-2066.95	-2352.16
4	GUIDE	40379536	9.25	5153	-0.160	0.184	0.080	0.127	206.530552	0.347967	2026.18	-1696.36
5	GUIDE	651041072	9.82	5154	0.191	-0.252	0.099	0.163	205.728858	-0.270240	-1129.55	124.62
6	GUIDE	40380232	9.74	5153	0.042	-0.309	0.093	0.157	205.925897	0.181116	642.19	87.67
7	GUIDE	40380264	10.00	5150	-0.183	0.202	0.105	0.177	206.518842	0.165369	1402.81	-1907.22

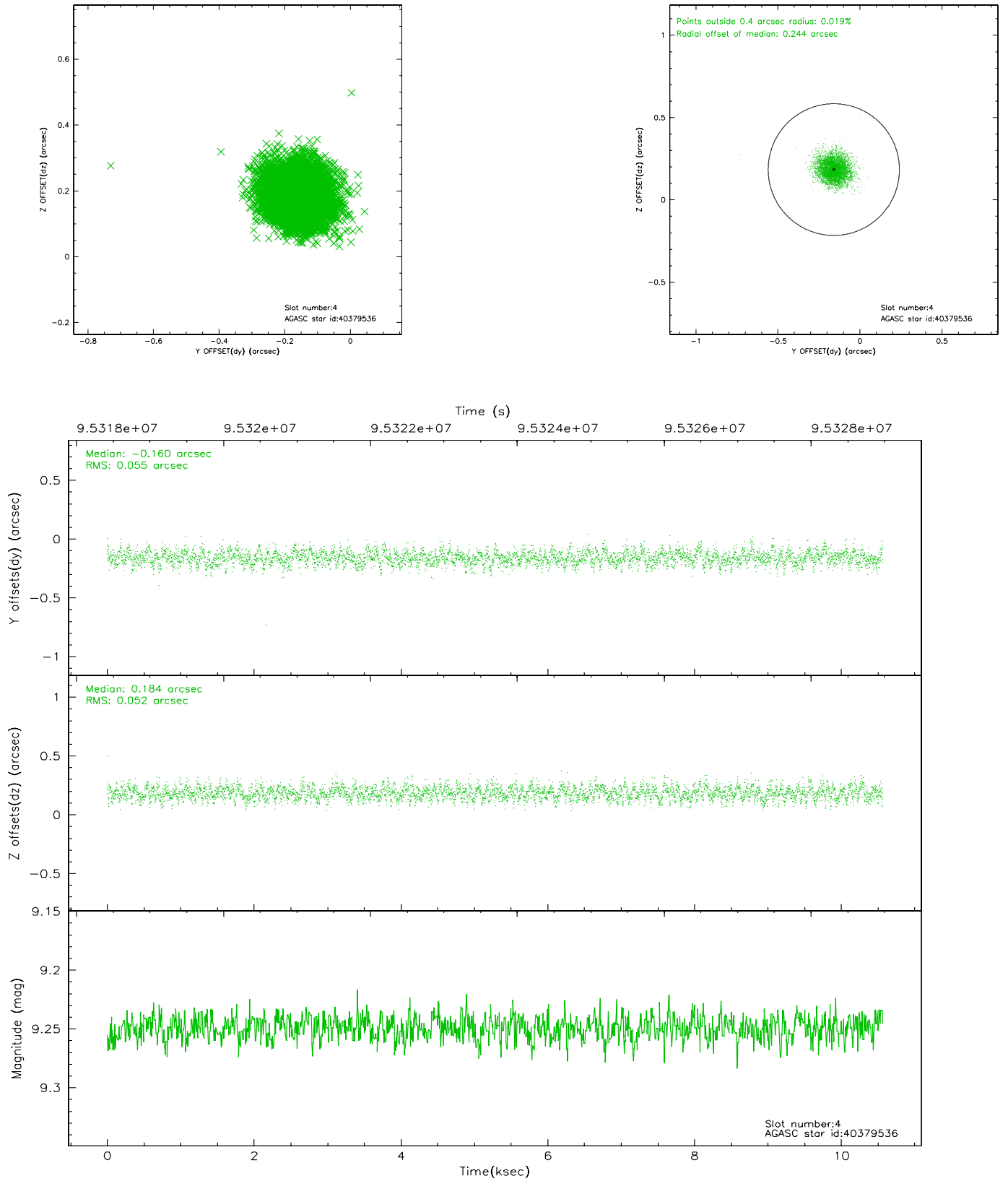


## 2.4 Star Slots

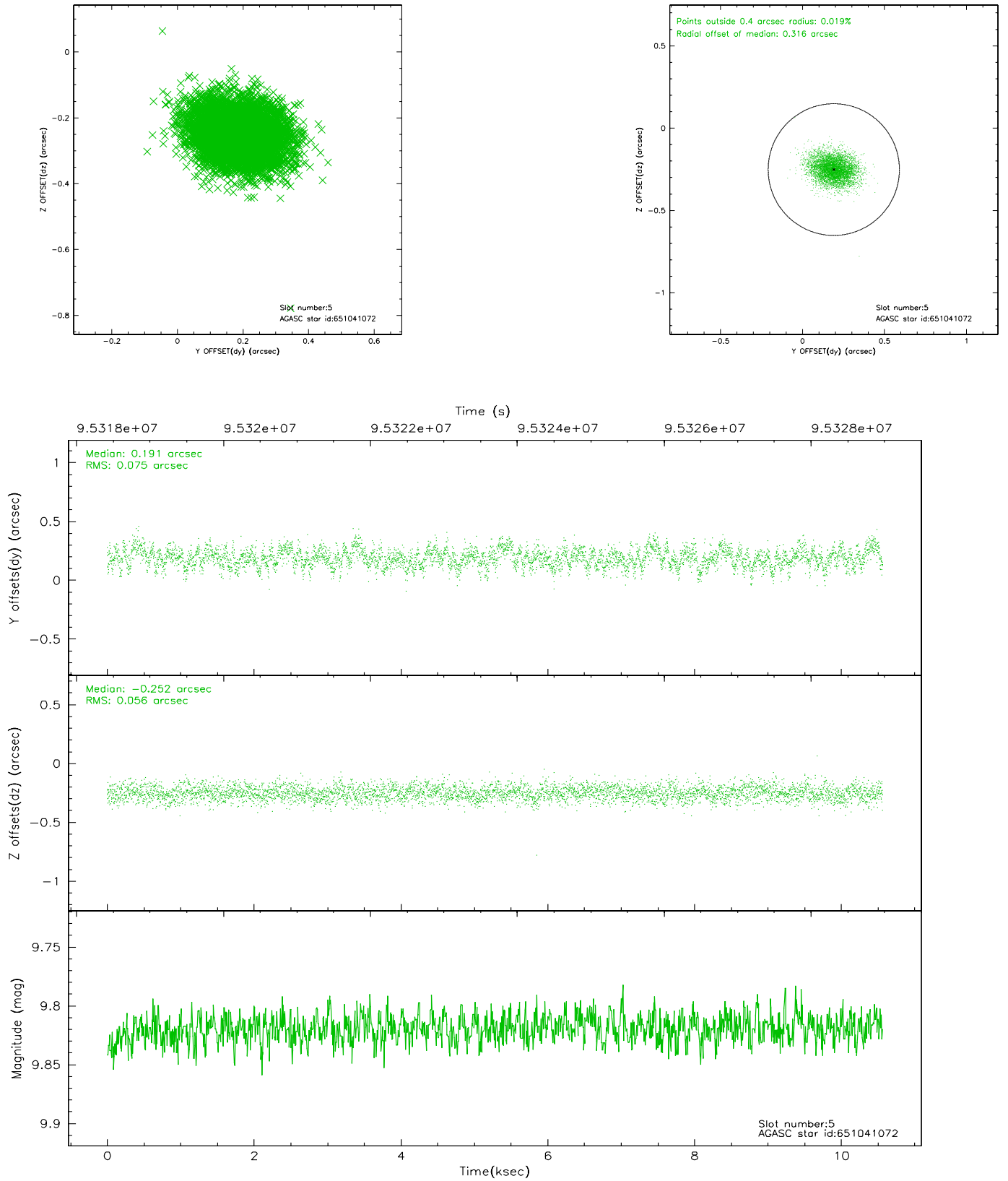
### 2.4.1 Slot 3



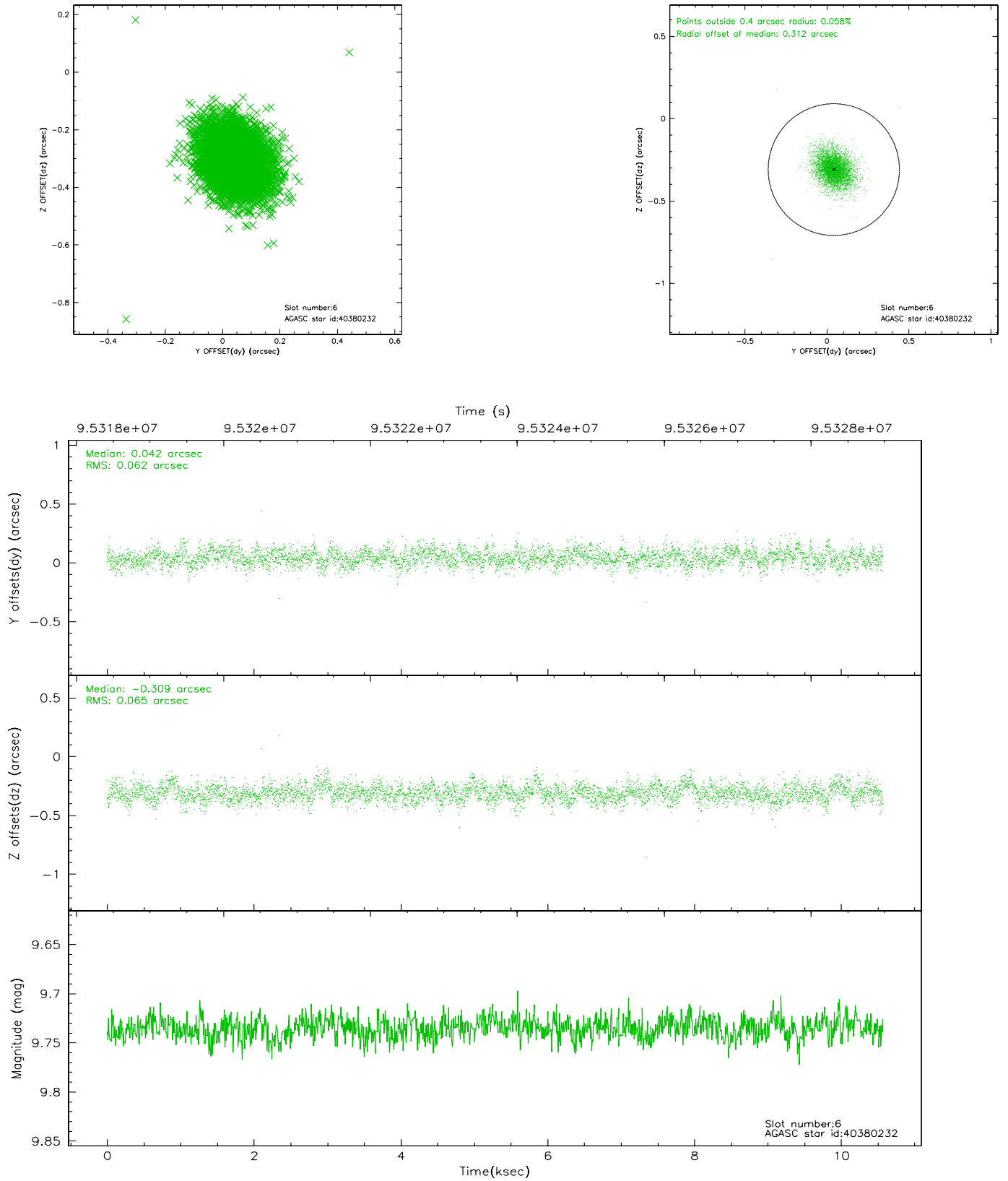
## 2.4.2 Slot 4



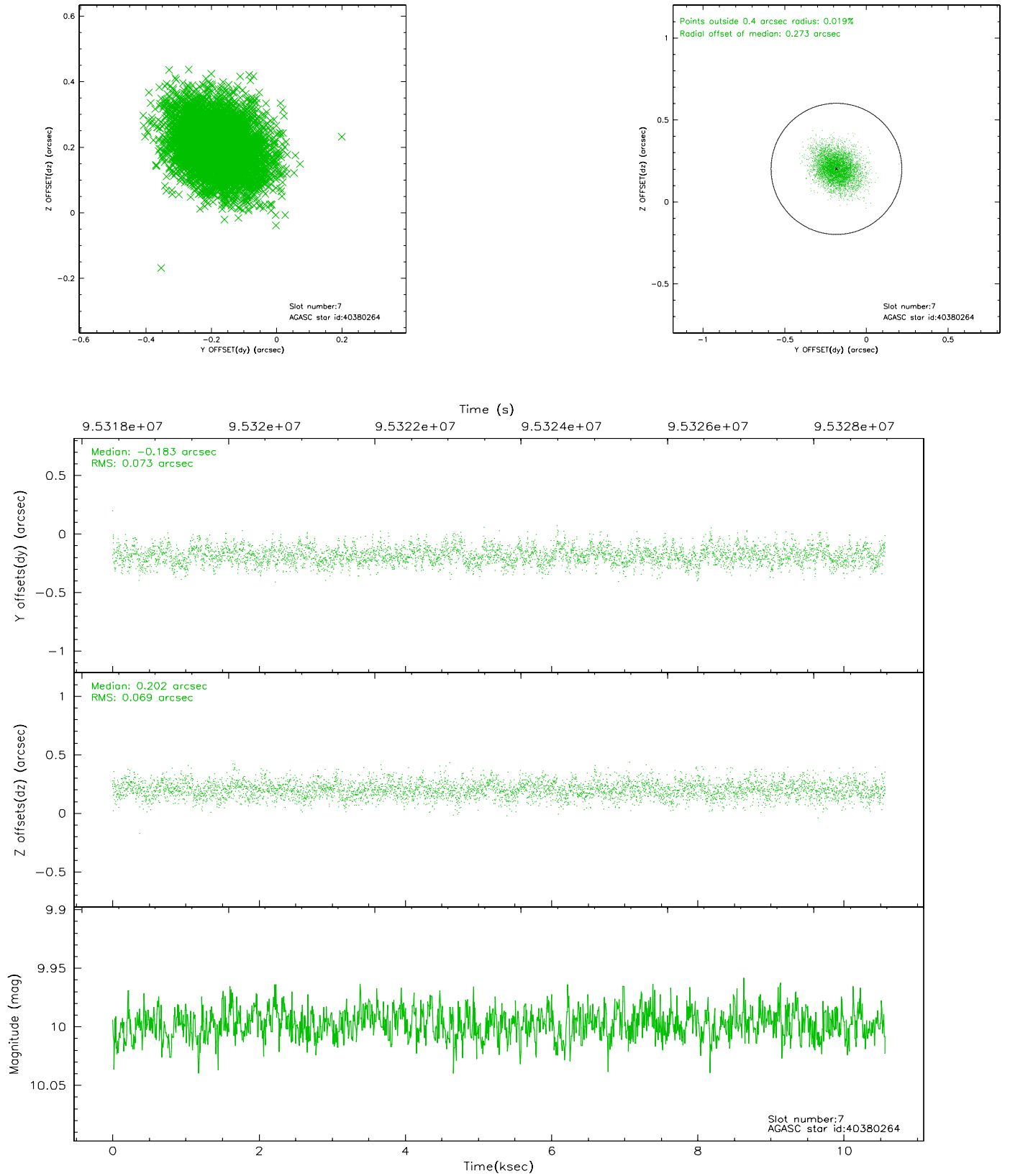
### 2.4.3 Slot 5



## 2.4.4 Slot 6

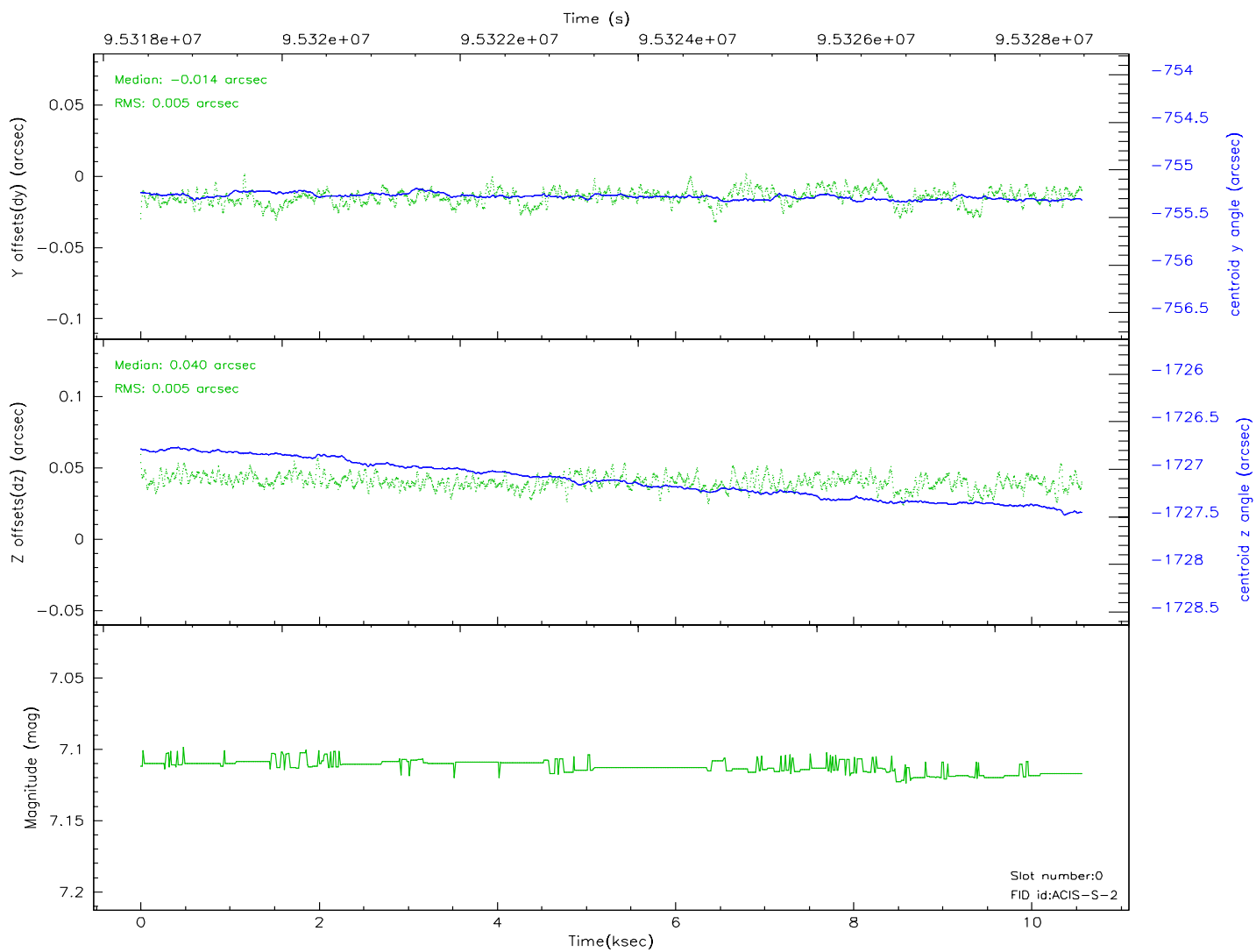
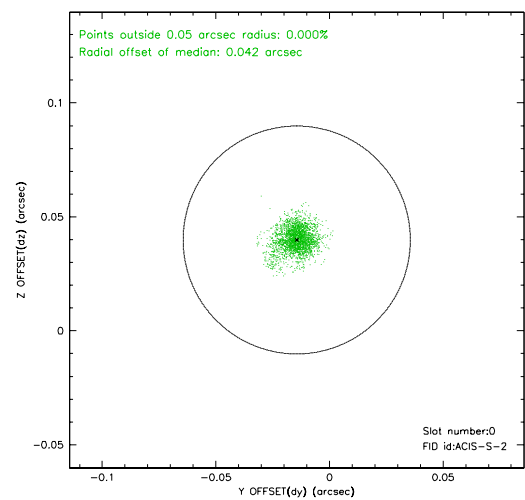
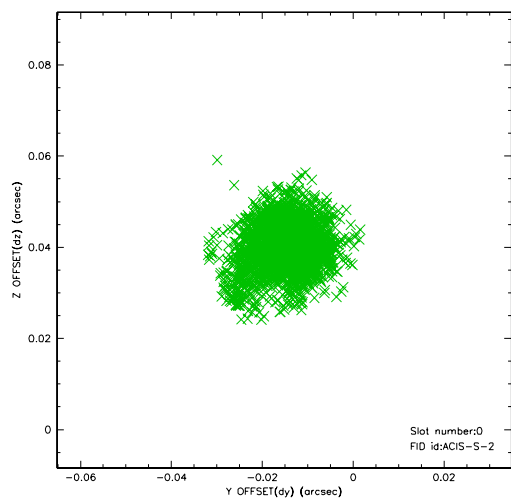


## 2.4.5 Slot 7

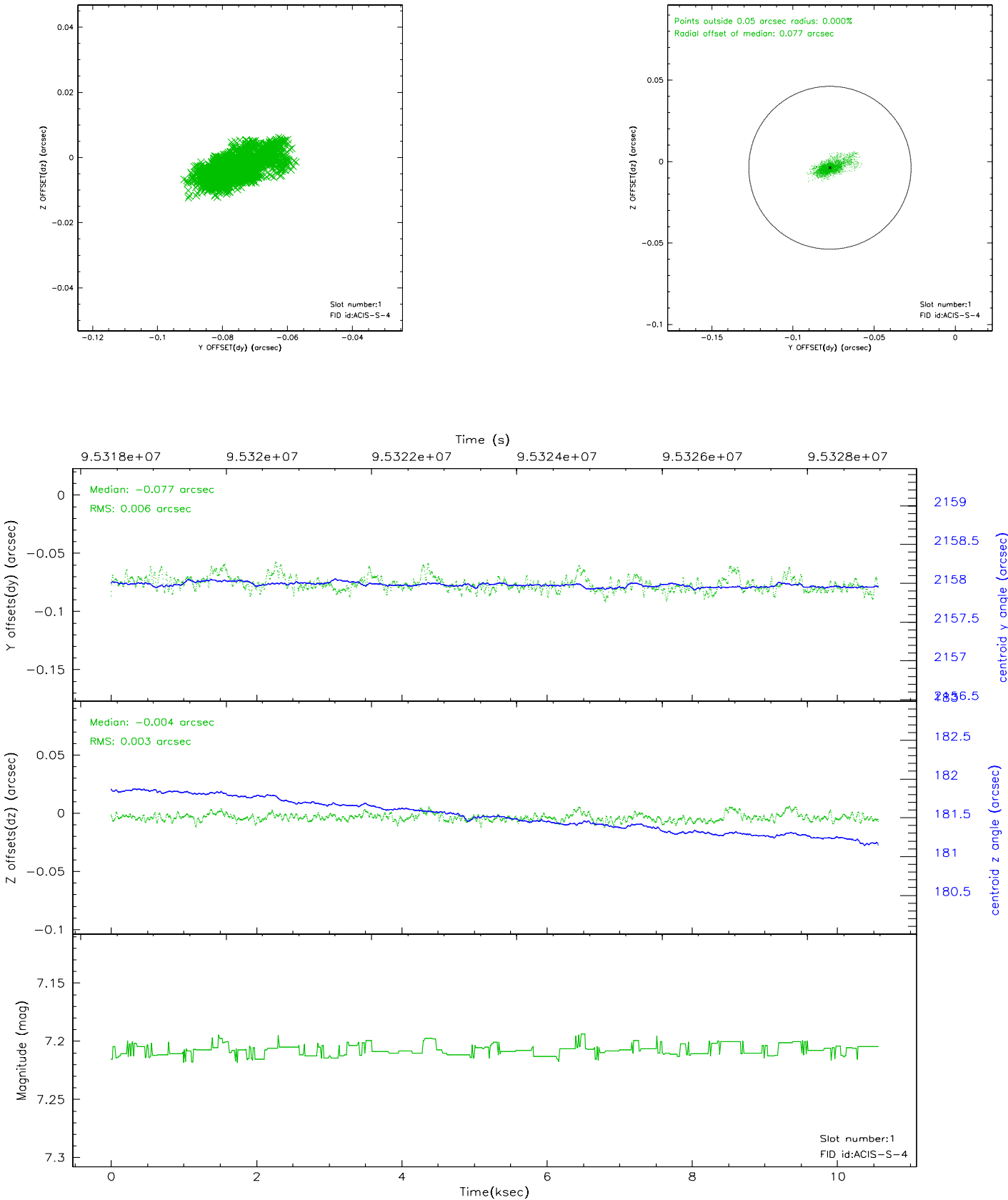


## 2.5 FID Slots

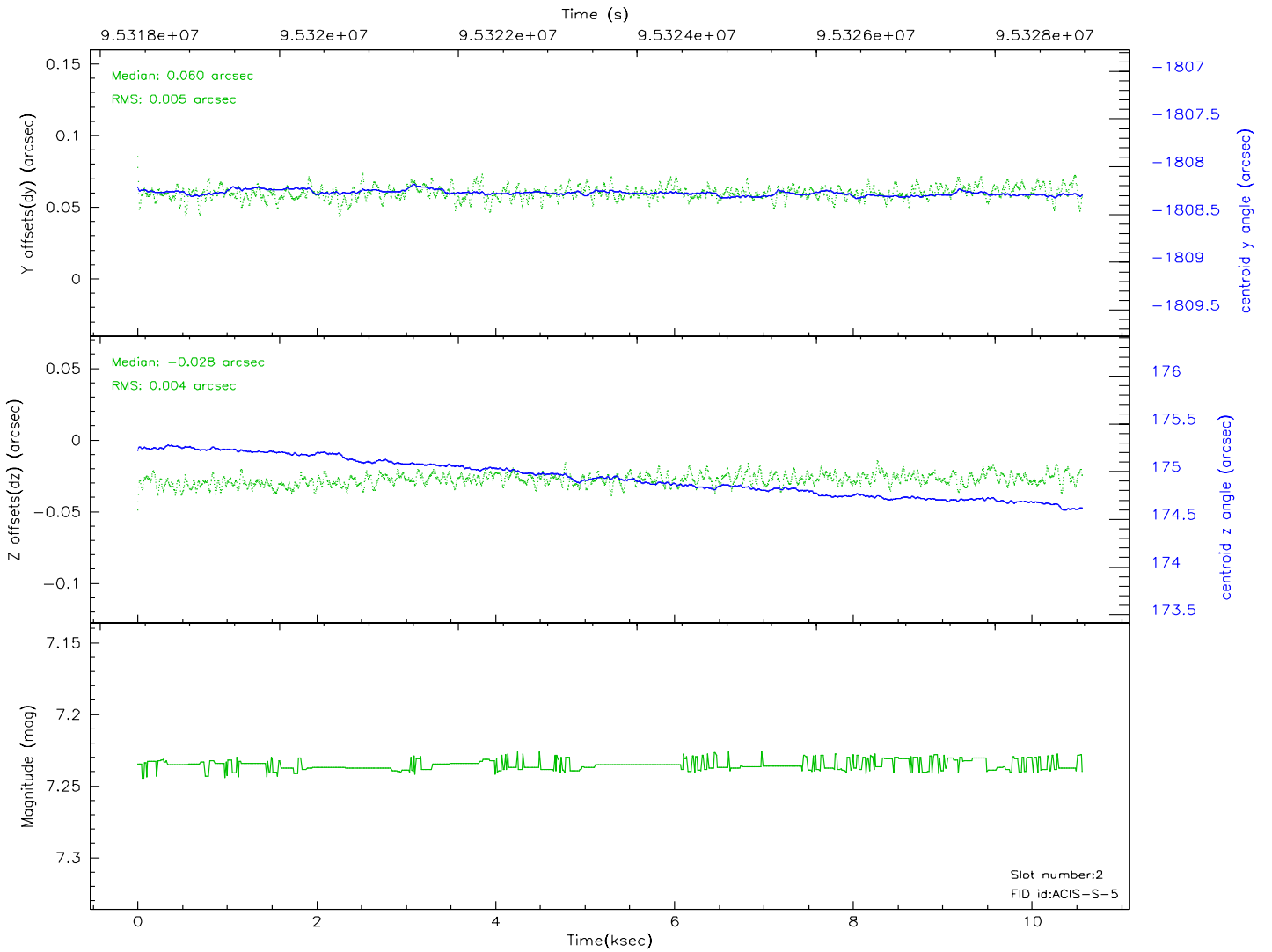
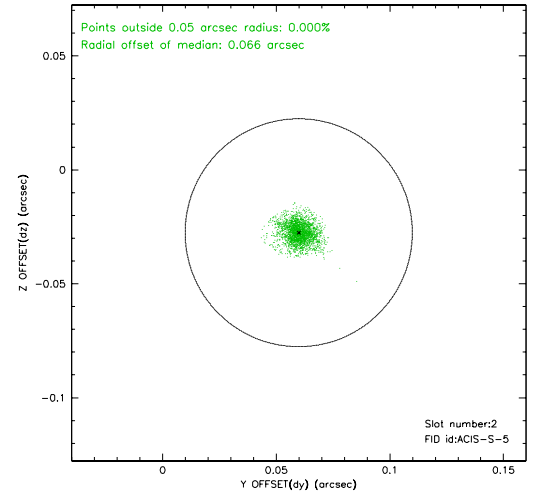
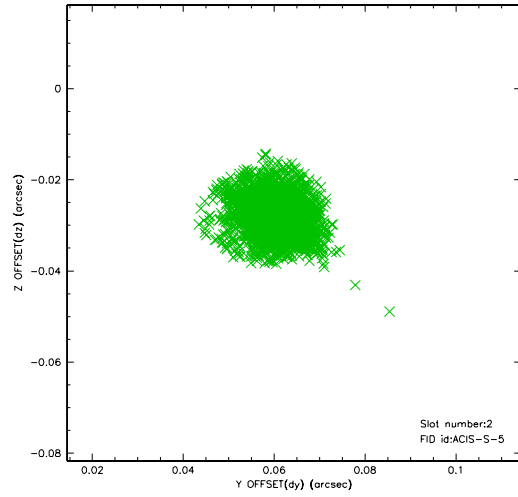
### 2.5.1 Slot 0



2.5.2 Slot 1

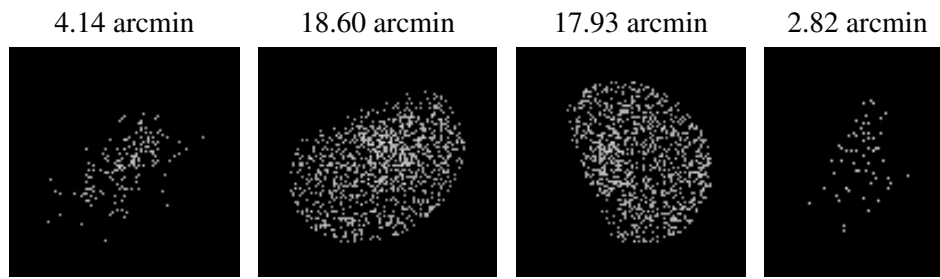


### 2.5.3 Slot 2





### 3 Point Sources



## A Summary

### A.1 Status

V&V Scientist	Jen Lauer
V&V Date (YYYY-MM-DD)	2006.11.02
V&V Edition	1
V&V Disposition and Status	OK
V&V Charge Time	9.952

### A.2 Comments