

V&V Reference Report

L2 ASCDS Version : 7.6.10

Observation 2248 - L2 Version 001
Chandra X-Ray Center

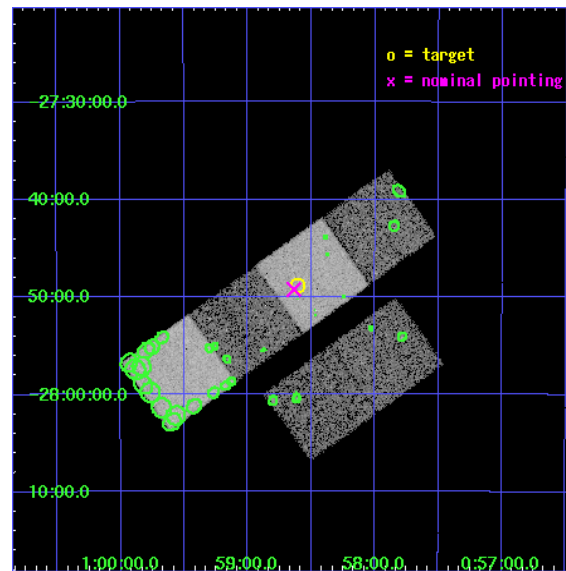
L2 Processing Date : Jun 16 2007

Contents

1	Front	2
2	OBI	3
2.1	OBI	3
2.1.1	Images	3
2.1.2	Bias	3
2.1.3	Parameters	4
2.1.4	Events	4
2.2	Compared Parameters	5
2.3	Aspect	6
2.4	Star Slots	9
2.4.1	Slot 3	9
2.4.2	Slot 4	10
2.4.3	Slot 5	11
2.4.4	Slot 6	12
2.4.5	Slot 7	13
2.5	FID Slots	14
2.5.1	Slot 0	14
2.5.2	Slot 1	15
2.5.3	Slot 2	16
3	Point Sources	17
A	Summary	18
A.1	Status	18
A.2	Comments	18

1 Front

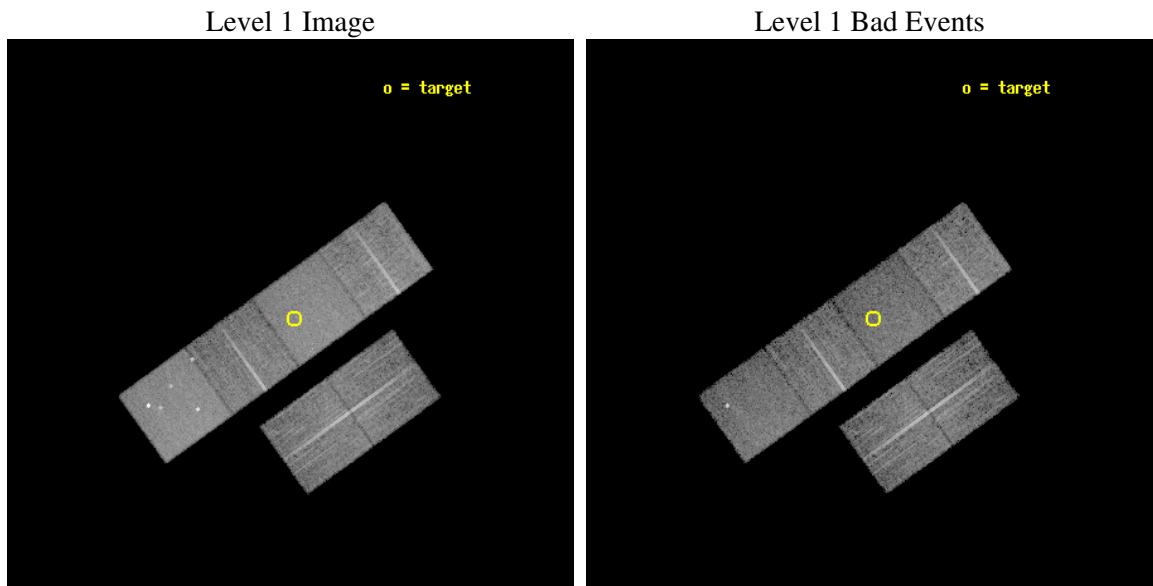
seq_num	900075
obs_id	2248
title	THE NATURE OF NARROW-LINE, FIR-LUMINOUS, X-RAY GALAXIES
observer	PROFESSOR TOM SHANKS
object	GSGP4X:114
dtcycle	0
cycle	P
ra_targ	14.651667
dec_targ	-27.813611
ra_nom	14.659399792044
dec_nom	-27.820709704831
roll_nom	324.2830366625
revision	2
ontime	12137.600011304
livetime	11983.906411576
ontime2	12137.600011304
ontime3	12137.600011304
ontime5	12137.600011304
ontime6	12137.600011304
ontime7	12137.600011304
ontime8	12137.600011304
l2events	111859



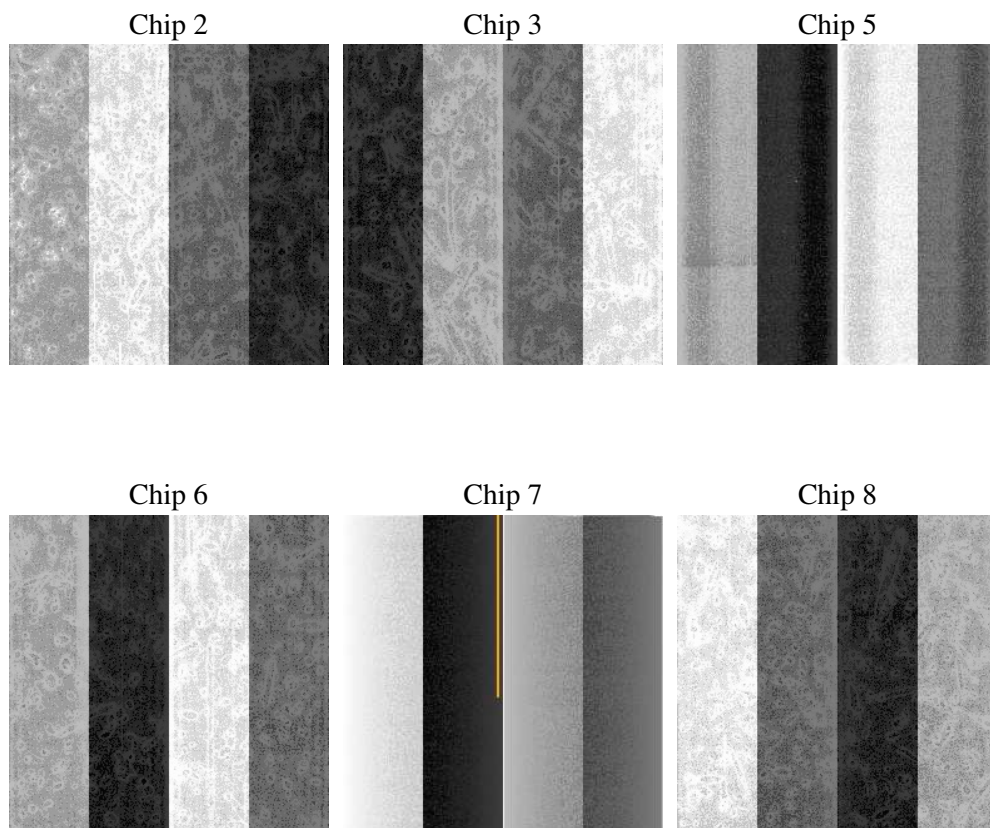
2 OBI

2.1 OBI

2.1.1 Images



2.1.2 Bias



2.1.3 Parameters

obi_num	0
ascdsver	7.6.10
caldbver	3.4.0
date	2007-06-16T10:48:20
revision	2

sched_exp_time	12217.915000
ontime	12137.600011304
ontime2	12137.600011304
ontime3	12137.600011304
ontime5	12137.600011304
ontime6	12137.600011304
ontime7	12137.600011304
ontime8	12137.600011304
l1events	494982

2.1.4 Events

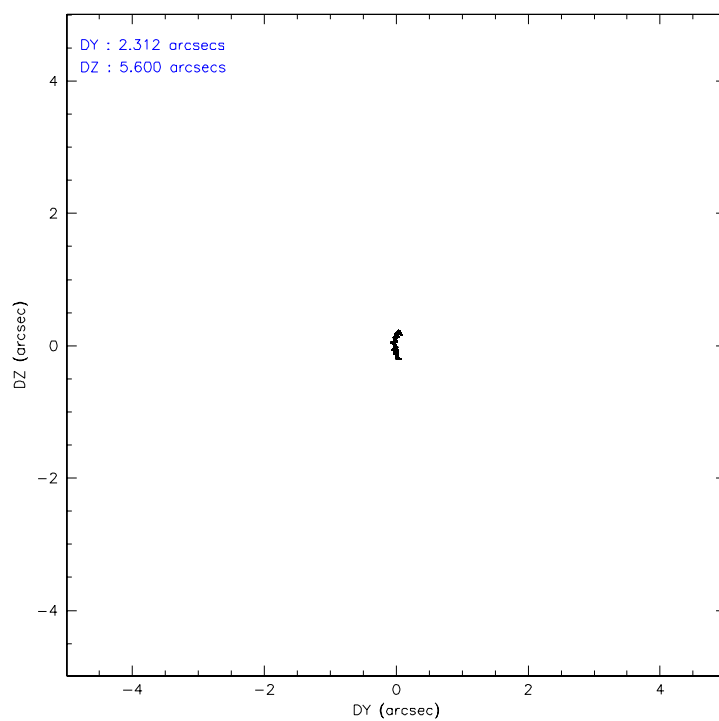
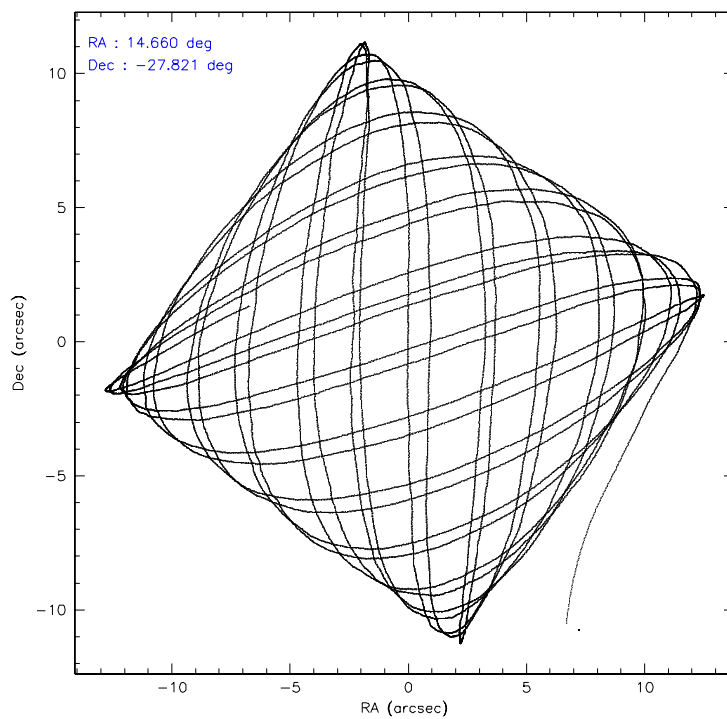
	ccd 2	ccd 3	ccd 5	ccd 6	ccd 7	ccd 8
level 1 events	73568	68938	102026	70949	90414	89087
rejected events	65099	60451	53323	61904	51399	71242
rejected %	88%	87%	52%	87%	56%	79%

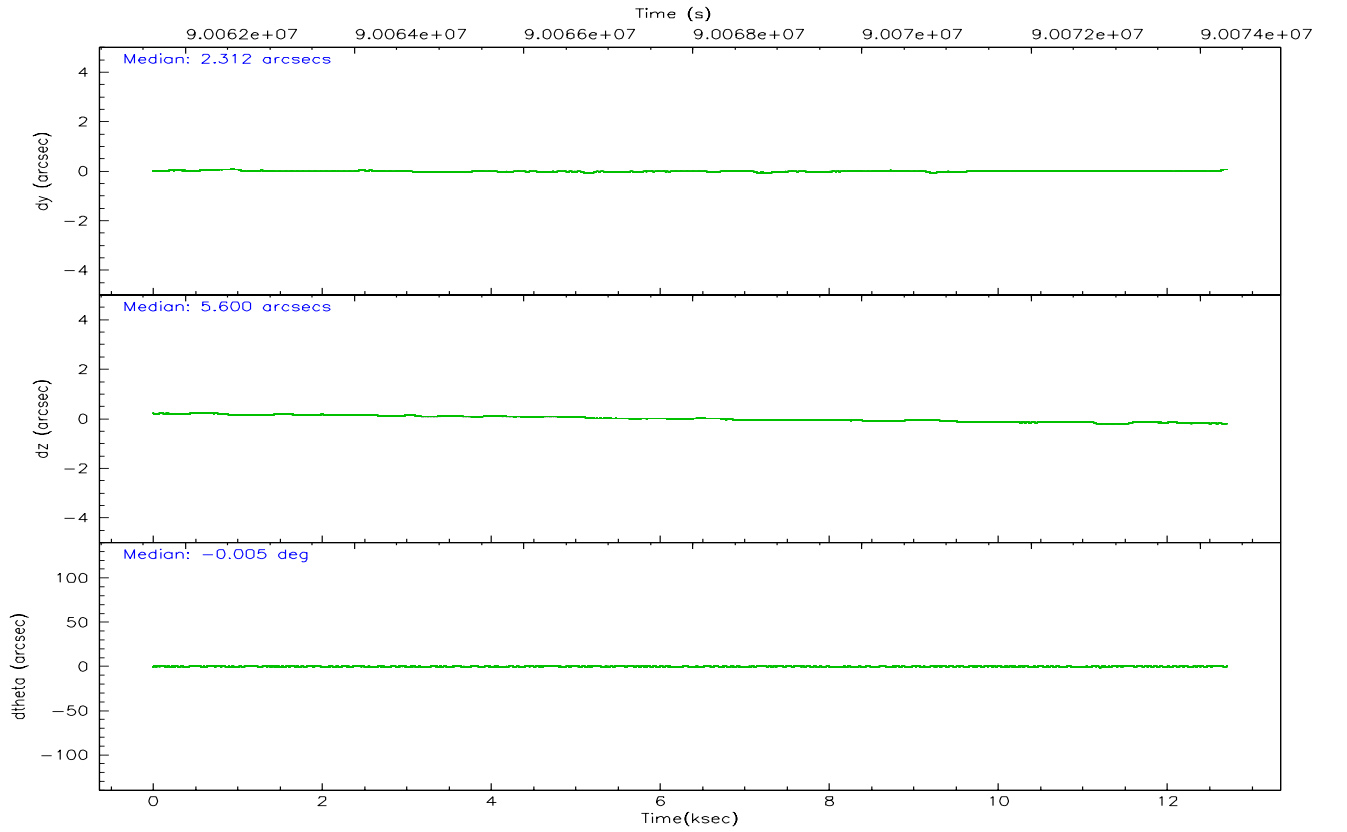
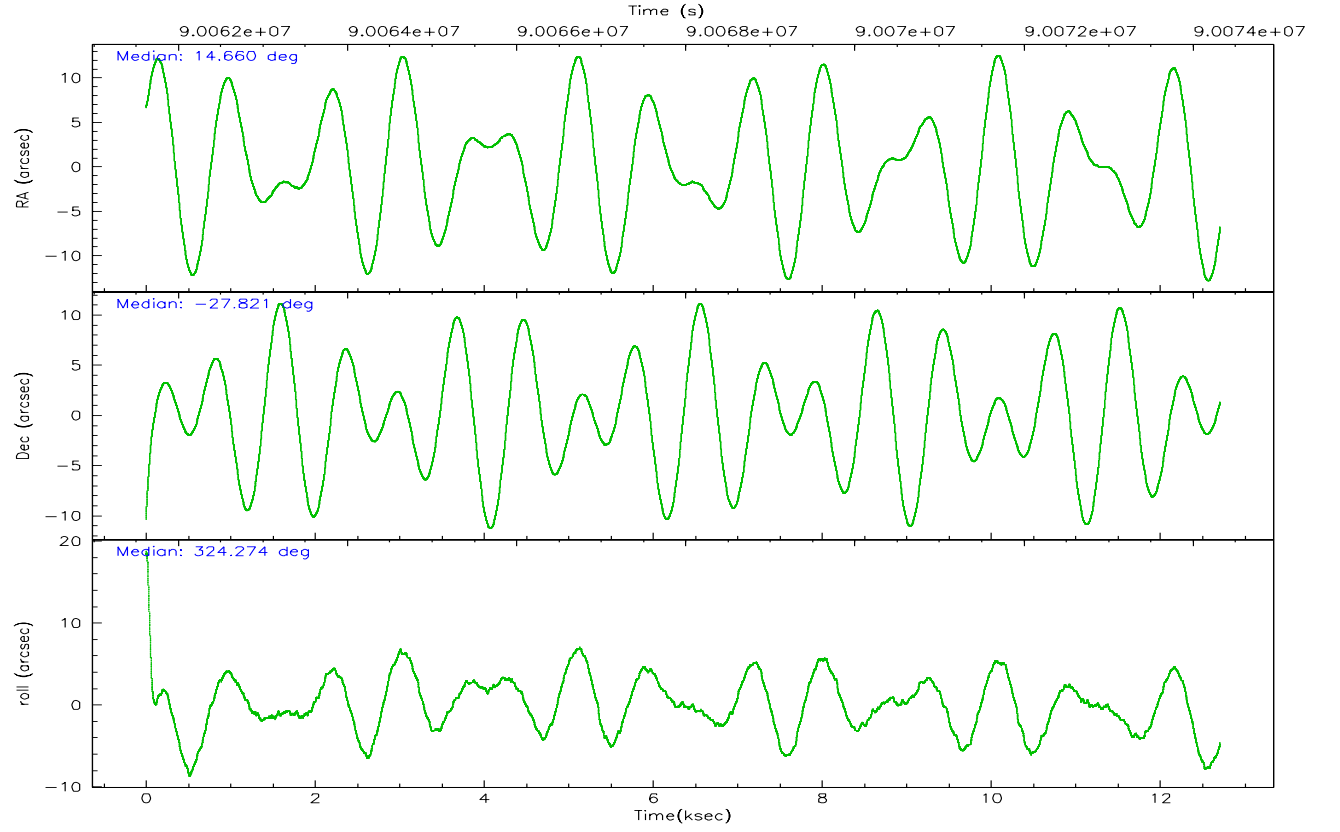
	ccd 2	ccd 3	ccd 5	ccd 6	ccd 7	ccd 8
grade 0 events	3915	3888	7234	4168	4889	6035
	5%	5%	7%	5%	5%	6%
grade 1 events	30	35	138	36	68	41
	0%	0%	0%	0%	0%	0%
grade 2 events	1688	1615	14666	1661	7695	3727
	2%	2%	14%	2%	8%	4%
grade 3 events	755	765	2023	811	3592	1794
	1%	1%	1%	1%	3%	2%
grade 4 events	722	782	1935	790	3553	1737
	0%	1%	1%	1%	3%	1%
grade 5 events	2336	2502	7601	2832	8316	3528
	3%	3%	7%	3%	9%	3%
grade 6 events	1390	1437	22855	1620	19301	4555
	1%	2%	22%	2%	21%	5%
grade 7 events	62732	57914	45574	59031	43000	67670
	85%	84%	44%	83%	47%	75%

2.2 Compared Parameters

Parameter	Planned	Actual	Parameter	Planned	Actual
Instrument	ACIS	ACIS	Obspar format version number	6	6
Detector	ACIS-235678	ACIS-235678	Obspar file type	PREDICTED	ACTUAL
Grating	NONE	NONE	Obspar update status	NONE	UPDATED
Data mode	FAINT	FAINT	Number of optional ACIS chips dropped	0	0
Observation mode	POINTING	POINTING	On-chip summing requested	N	N
Pointing RA	14.628619	14.65939979204381	Subarray requested	NONE	NONE
Pointing Dec	-27.818192	-27.82070970483127	Alternating exposures requested	N	N
Pointing Roll	324.112019	324.2830366625031	Primary exposure time	0.000000	3.2
SIM focus pos (mm)	-0.684267	-0.6828225247311905			
SIM defocus (mm)	0	0.001444936568705701			
SIM translation stage pos (mm)	-190.132523	-190.1400660498719			
SIM translation stage offset (mm)	0	0.00754346686406393			
Observation start time	90062105.184000	90060994.13680001			
Observation start date	2000-11-08T09:14:01	2000-11-08T08:56:34			
Observation end time	90074323.184000	90074977.18732899			
Observation end date	2000-11-08T12:37:39	2000-11-08T12:49:37			
Read mode	TIMED	TIMED			

2.3 Aspect



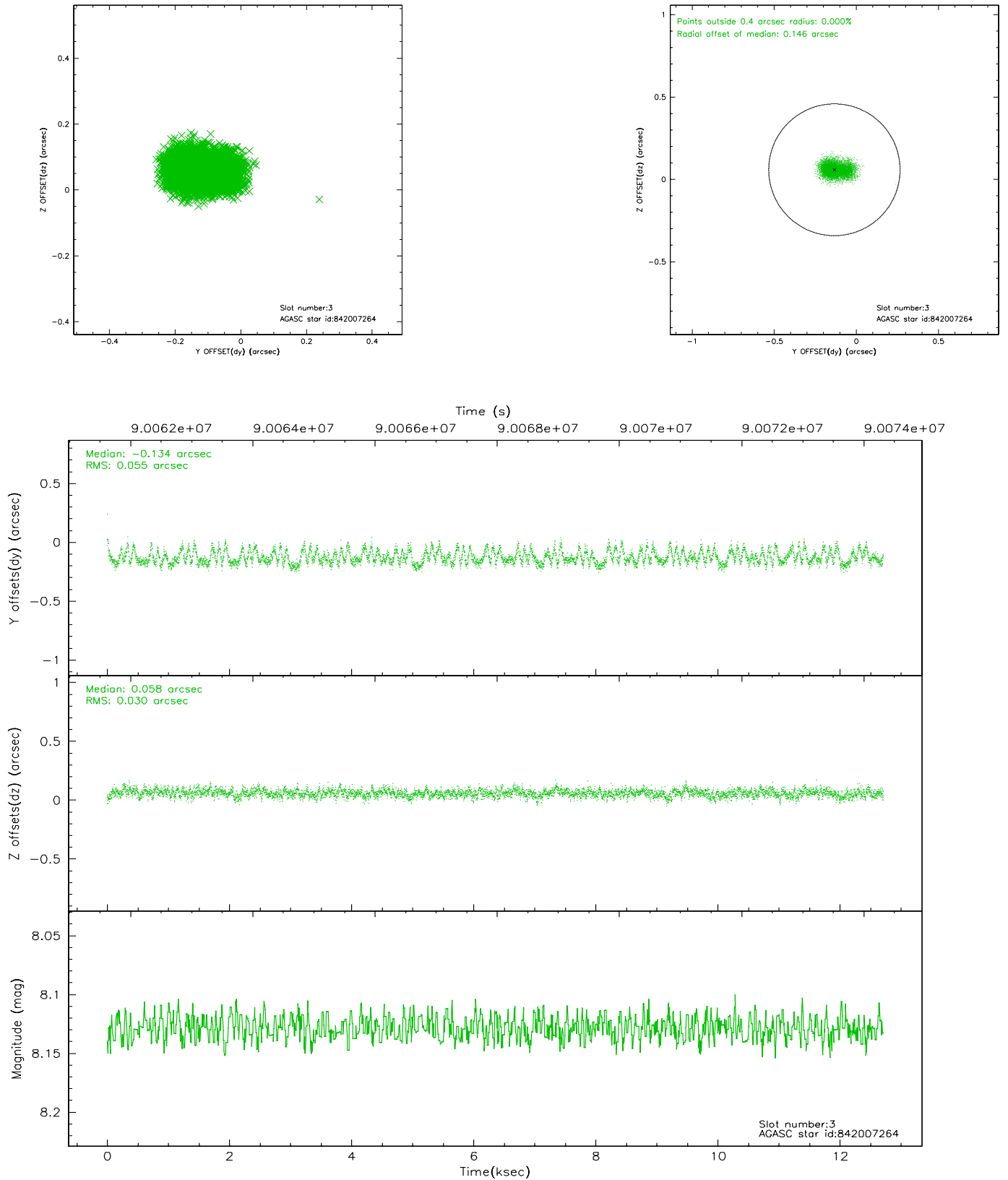


Slot Statistics

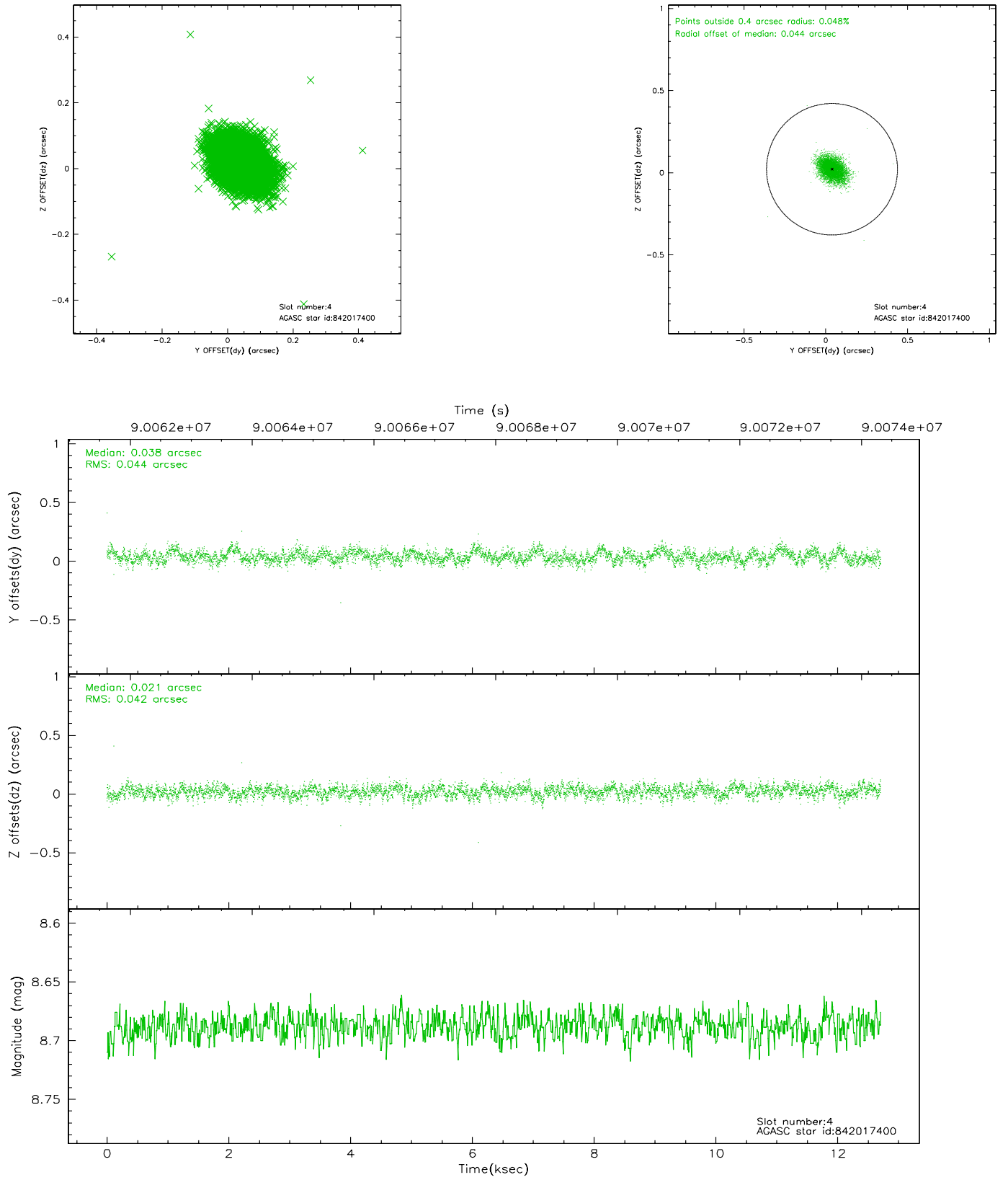
slot	status	id	mag	n_pts	med_dy	med_dz	dr1	dr2	ra	dec	mean_y	mean_z
0	FID	ACIS-S-2	7.11	3100	-0.035	0.020	0.007	0.011	0.000000	0.000000	-754.93	-1726.73
1	FID	ACIS-S-4	7.20	3100	-0.041	0.012	0.005	0.009	0.000000	0.000000	2158.13	181.41
2	FID	ACIS-S-5	7.24	3101	0.046	-0.023	0.006	0.010	0.000000	0.000000	-1807.23	175.40
3	GUIDE	842007264	8.13	6201	-0.134	0.058	0.066	0.110	14.570692	-27.092422	-1683.44	2007.71
4	GUIDE	842017400	8.69	6201	0.038	0.021	0.063	0.104	14.466062	-28.061705	94.70	-1012.90
5	GUIDE	842015088	9.30	6196	-0.086	0.023	0.076	0.120	13.933025	-27.893682	-1630.86	-1523.14
6	GUIDE	842008736	10.40	6136	0.121	-0.006	0.126	0.204	14.870220	-27.799337	582.90	505.22
7	GUIDE	842007696	9.69	6195	0.055	-0.097	0.092	0.151	14.456243	-28.218698	401.85	-1488.98

2.4 Star Slots

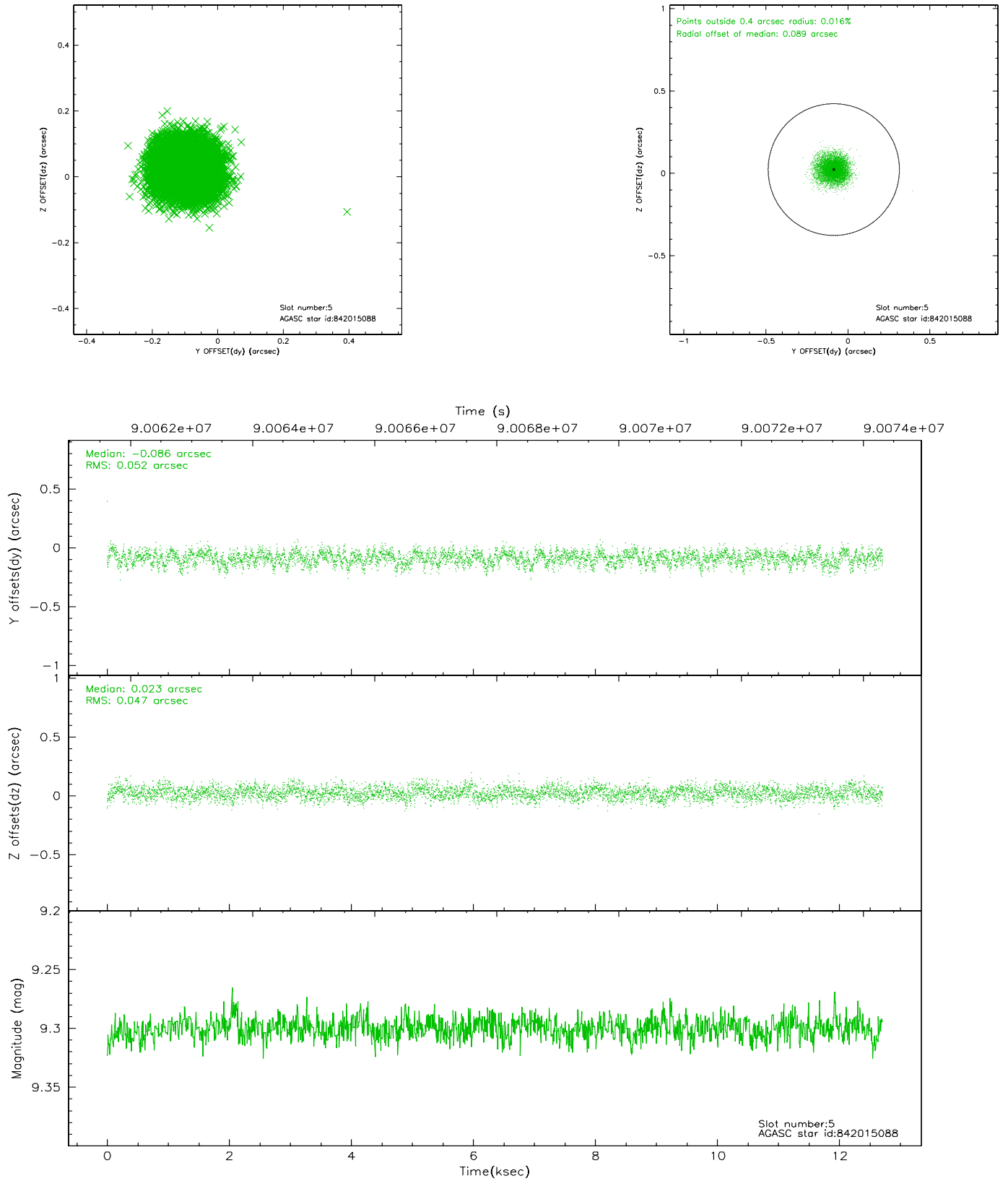
2.4.1 Slot 3



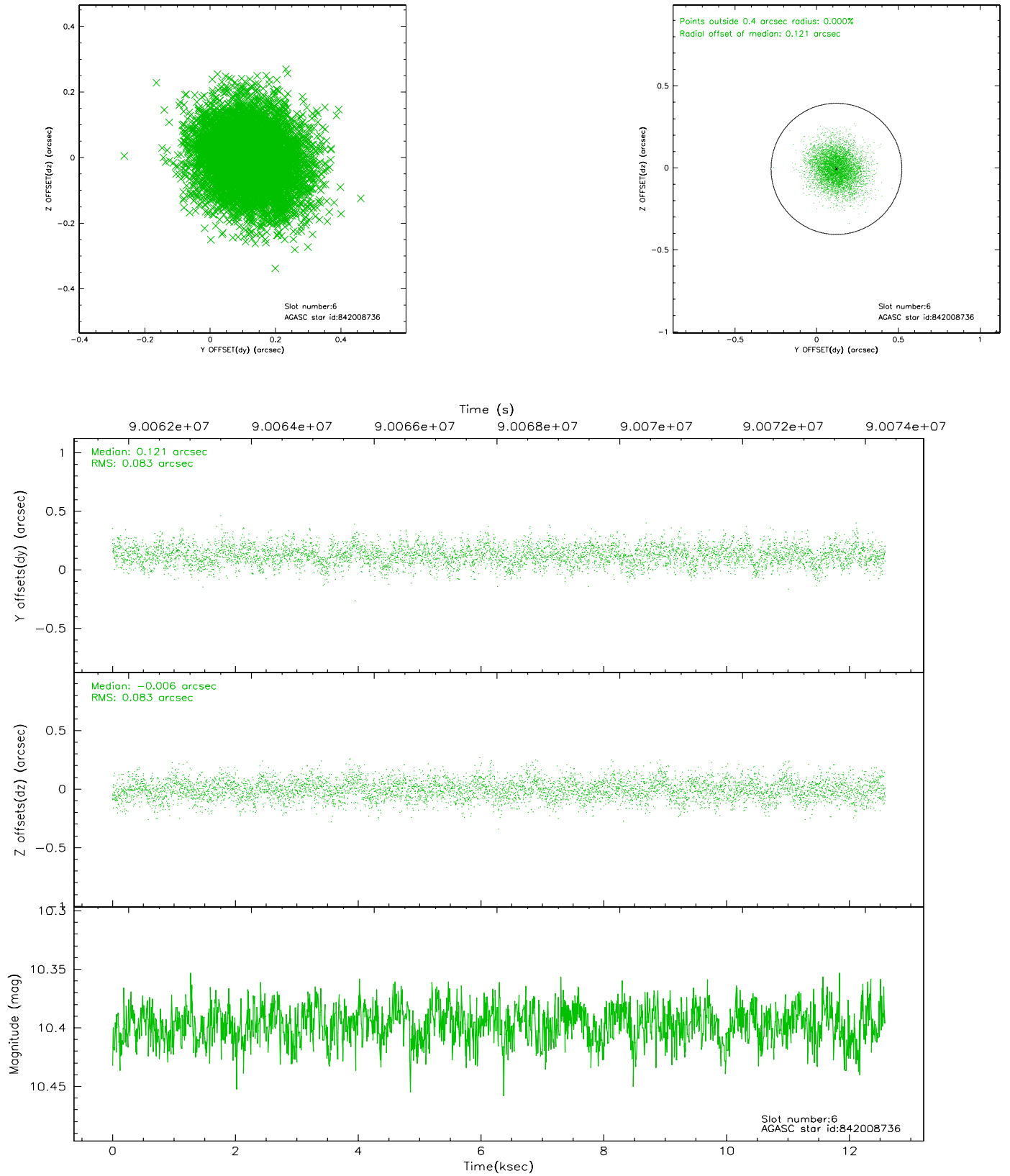
2.4.2 Slot 4



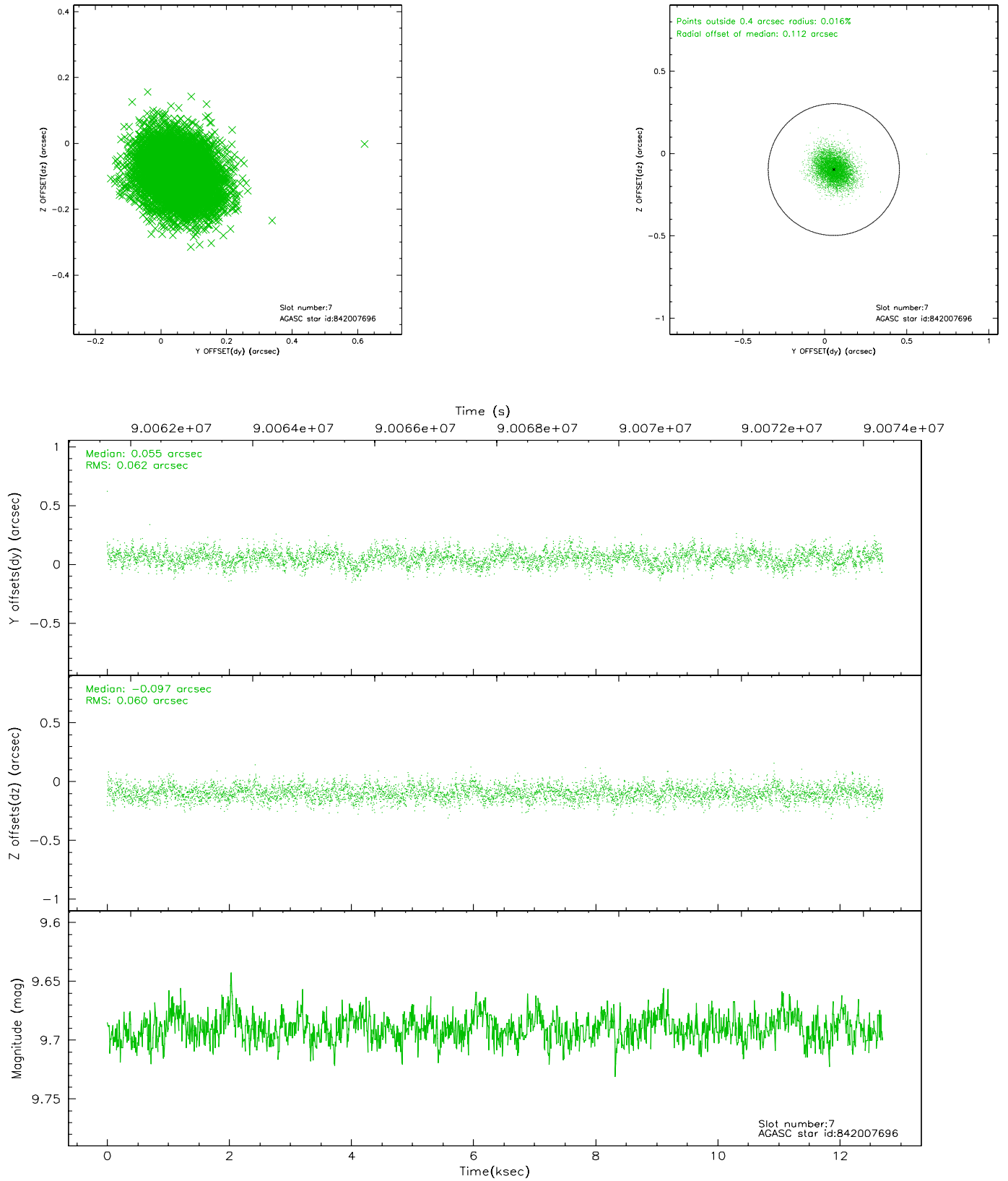
2.4.3 Slot 5



2.4.4 Slot 6

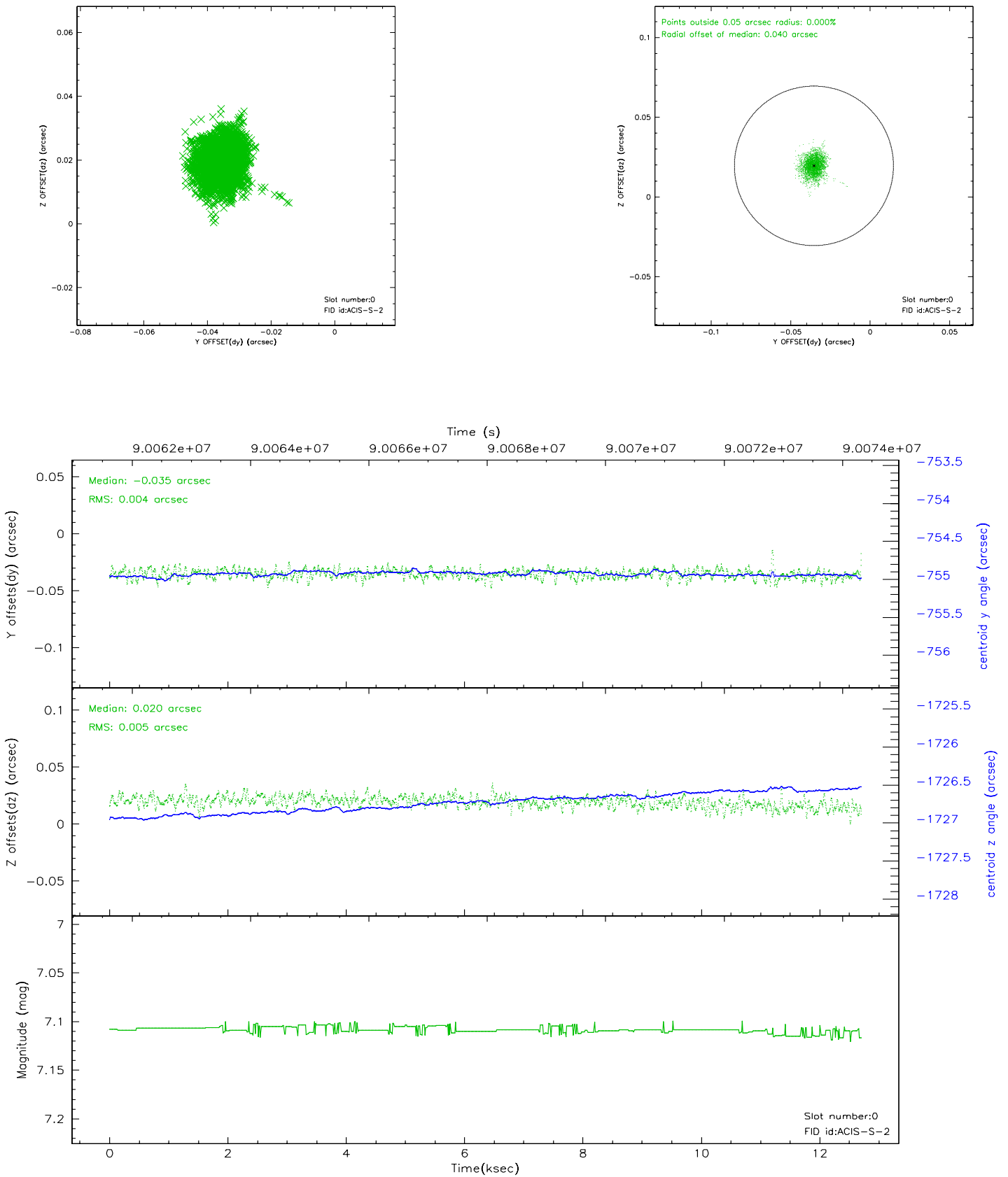


2.4.5 Slot 7

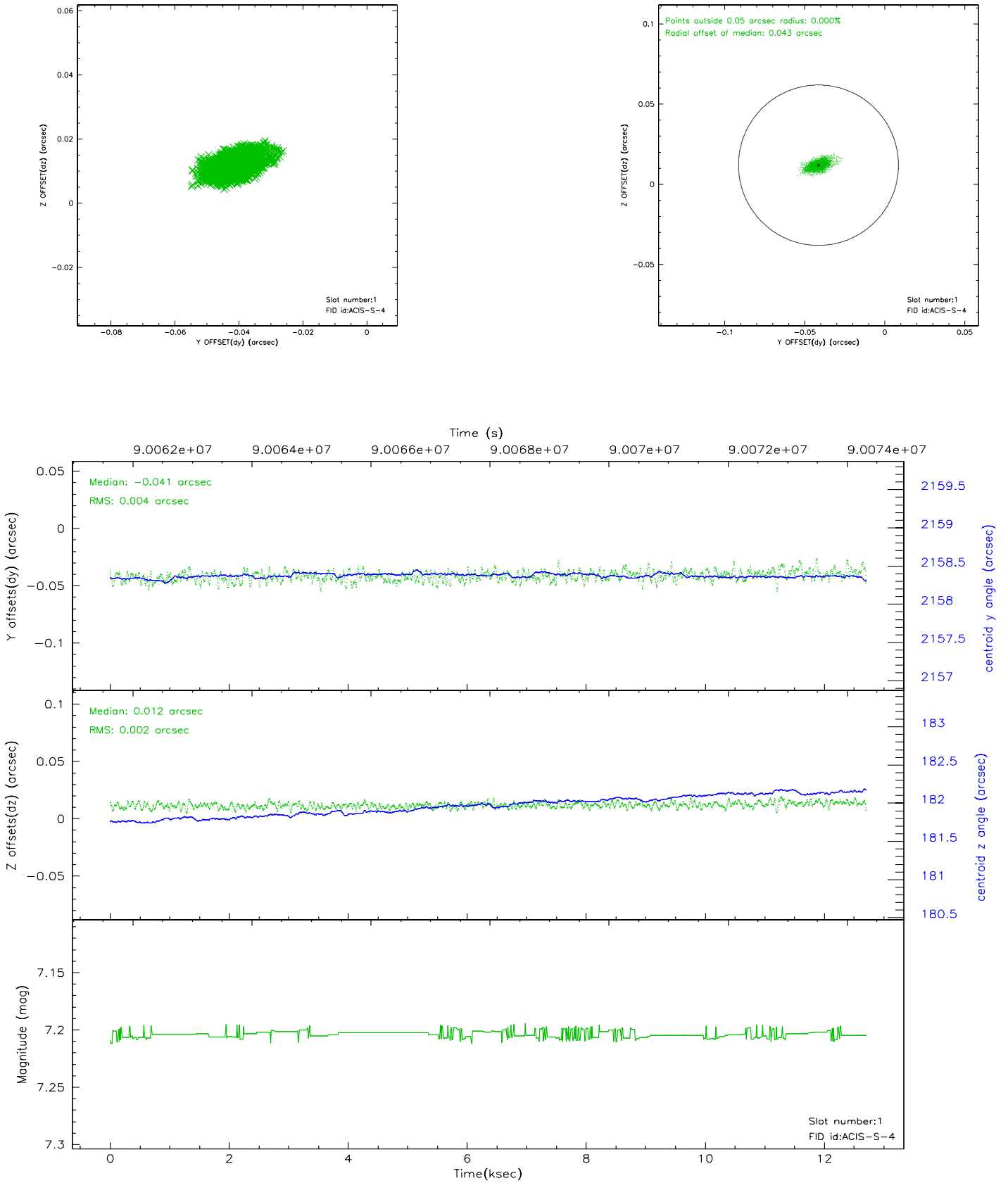


2.5 FID Slots

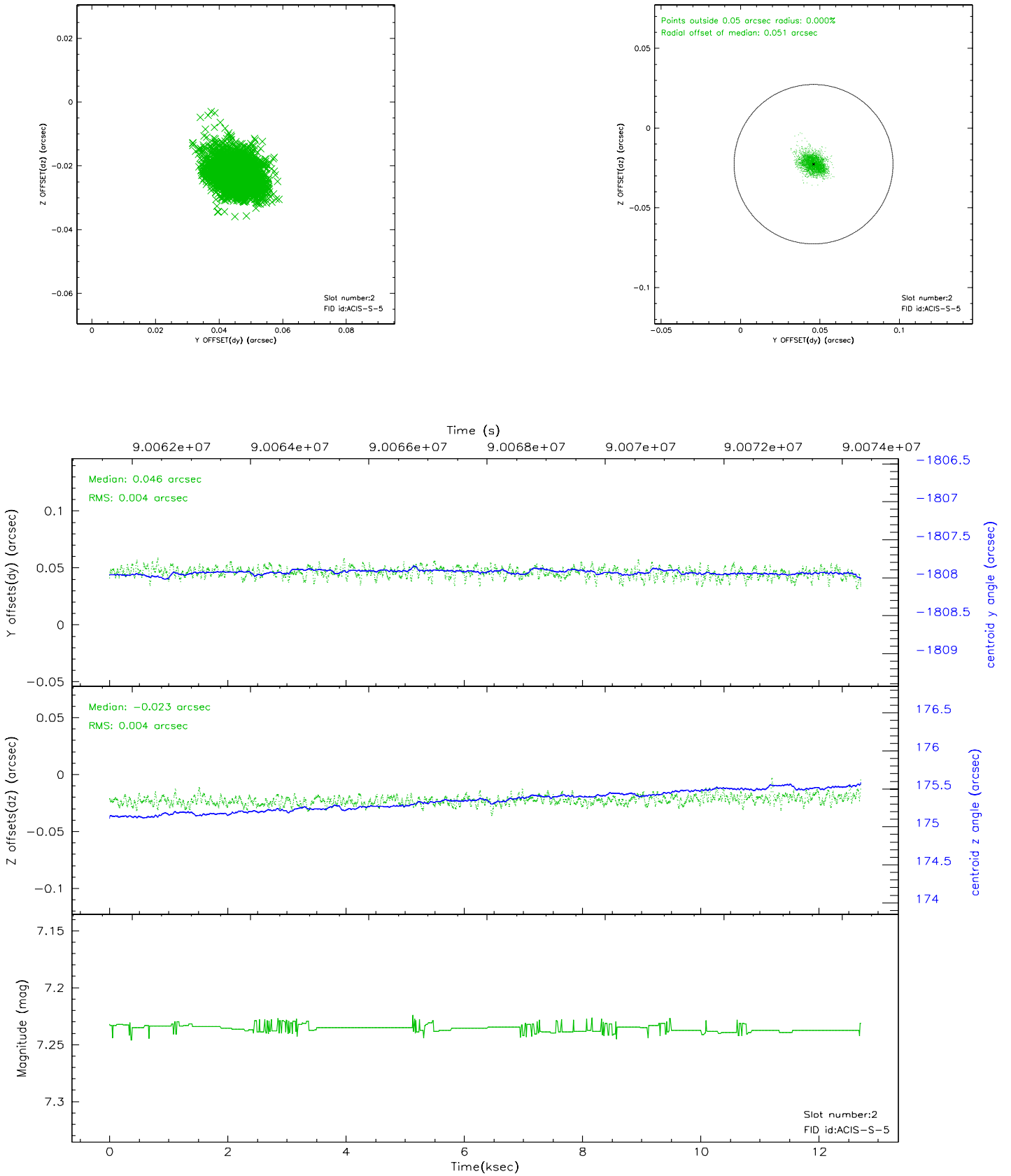
2.5.1 Slot 0



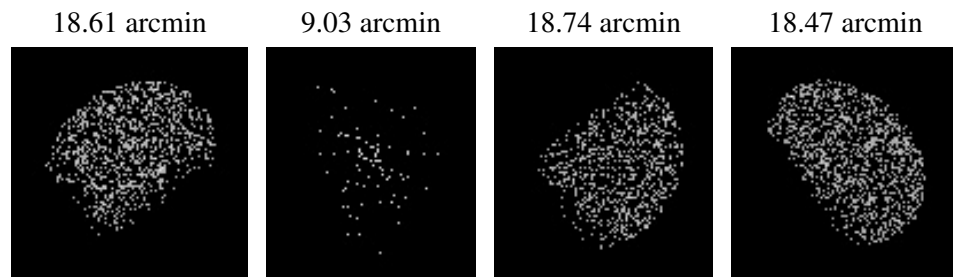
2.5.2 Slot 1



2.5.3 Slot 2



3 Point Sources



A Summary

A.1 Status

V&V Scientist	Jen Lauer
V&V Date (YYYY-MM-DD)	2007.06.18
V&V Edition	1
V&V Disposition and Status	OK
V&V Charge Time	12.137

A.2 Comments