

V&V Reference Report

L2 ASCDS Version : 8.4.5

Observation 2247 - L2 Version 3
Chandra X-Ray Center

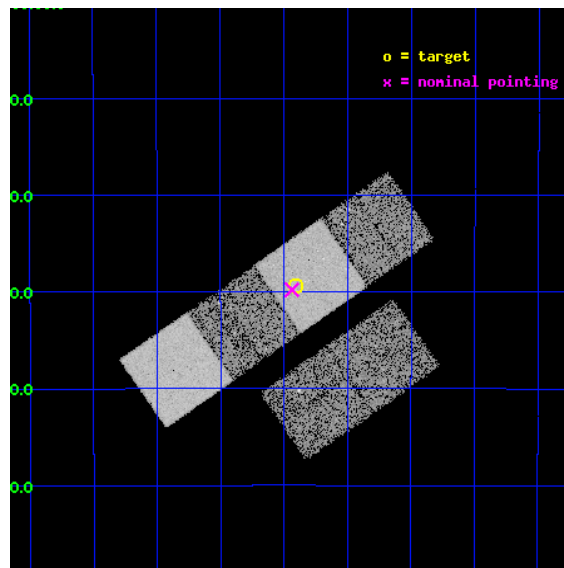
L2 Processing Date : Sep 3 2012

Contents

1	Front	2
2	OBI	3
2.1	OBI	3
2.1.1	Images	3
2.1.2	Bias	3
2.1.3	Parameters	4
2.1.4	Events	4
2.2	Compared Parameters	5
2.3	Aspect	6
2.4	Star Slots	9
2.4.1	Slot 3	9
2.4.2	Slot 4	10
2.4.3	Slot 5	11
2.4.4	Slot 6	12
2.4.5	Slot 7	13
2.5	FID Slots	14
2.5.1	Slot 0	14
2.5.2	Slot 1	15
2.5.3	Slot 2	16
A	Summary	17
A.1	Status	17
A.2	Comments	17

1 Front

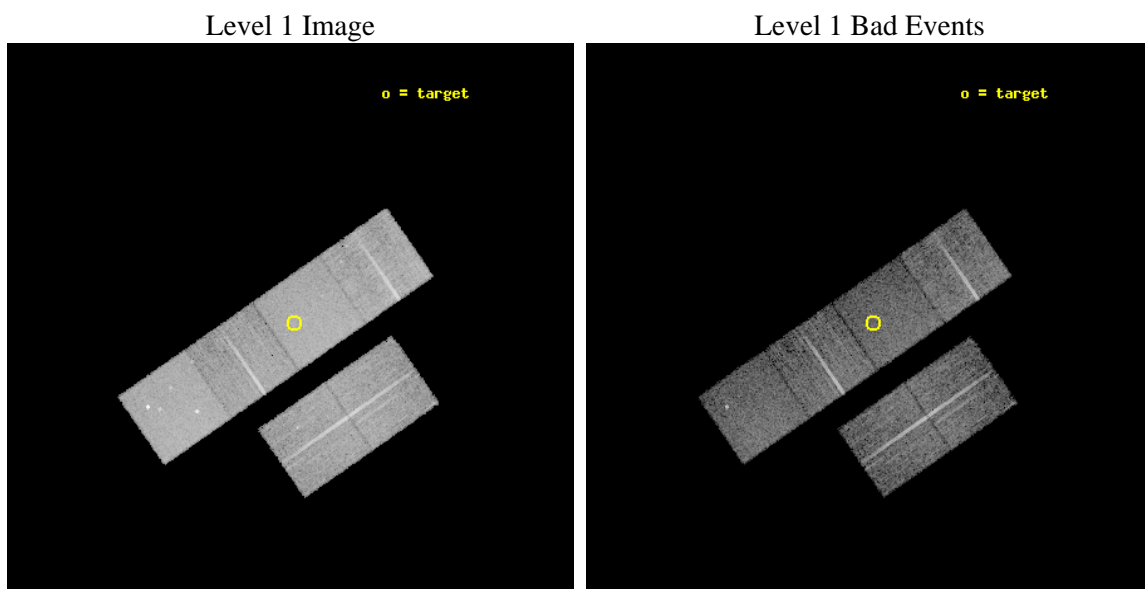
seq_num	900074	Sequence number
obs_id	2247	Observation id
title	THE NATURE OF NARROW-LINE, FIR-LUMINOUS, X-RAY GALAXIES	Proposal t
observer	PROFESSOR TOM SHANKS	Principal investigator
object	GSGP4X:109	Source name
dtcycle	0	
cycle	P	events from which exps? Prim/Second/Both
ra_targ	14.601667	Observer's specified target RA [deg]
dec_targ	-27.489722	Observer's specified target Dec [deg]
ra_nom	14.609517446849	Nominal RA [deg]
dec_nom	-27.4966827657	Nominal Dec [deg]
roll_nom	325.21292933931	Nominal Roll [deg]
revision	3	Processing version of data
ontime	11919.799720824	Sum of GTIs [s]
livetime	11768.864039517	Livetime [s]
ontime2	11919.840760827	Sum of GTIs [s]
ontime3	11916.435640588	Sum of GTIs [s]
ontime5	11919.75868082	Sum of GTIs [s]
ontime6	11919.717640832	Sum of GTIs [s]
ontime7	11919.799720824	Sum of GTIs [s]
ontime8	11919.635560825	Sum of GTIs [s]
l2events	96767	Number of level 2 events



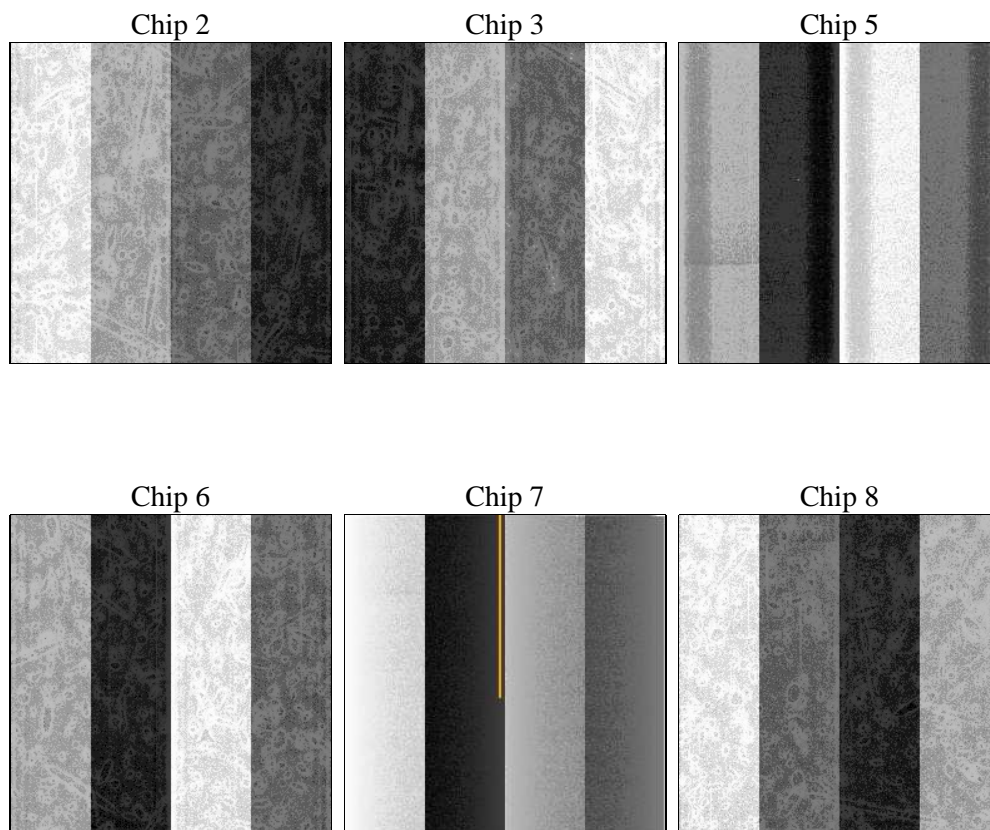
2 OBI

2.1 OBI

2.1.1 Images



2.1.2 Bias



2.1.3 Parameters

obi_num	0	Obi number	sched_exp_time	12000.000000	[s] Scheduled observation exposure time
ascdsver	8.4.5	Processing system revision	ontime	11919.799720824	Sum of GTIs [s]
caldsver	4.5.1.1	 	ontime2	11919.840760827	Sum of GTIs [s]
date	2012-09-03T03:16:50	Date and time of file creation	ontime3	11916.435640588	Sum of GTIs [s]
revision	3	Processing version of data	ontime5	11919.75868082	Sum of GTIs [s]
			ontime6	11919.717640832	Sum of GTIs [s]
			ontime7	11919.799720824	Sum of GTIs [s]
			ontime8	11919.635560825	Sum of GTIs [s]
			l1events	437151	Number of level 1 events

2.1.4 Events

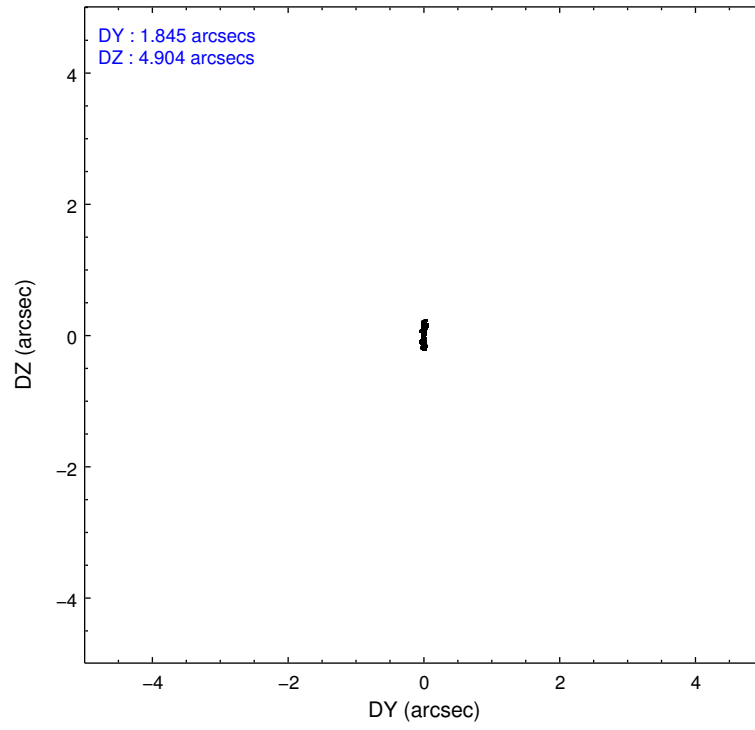
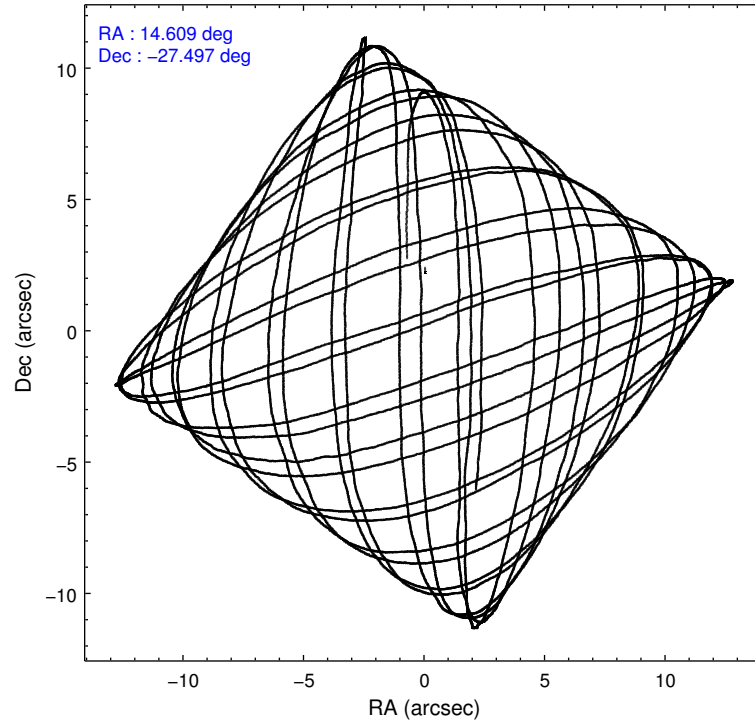
	ccd 2	ccd 3	ccd 5	ccd 6	ccd 7	ccd 8		ccd 2	ccd 3	ccd 5	ccd 6	ccd 7	ccd 8
level 1 events	63929	61555	89494	63253	80208	78712	grade 0 events	3386	3034	5360	3194	3294	5170
rejected events	56380	54600	48043	55720	46568	62799		5%	4%	5%	5%	4%	6%
rejected %	88%	88%	53%	88%	58%	79%	grade 1 events	32	23	408	19	69	41
								0%	0%	0%	0%	0%	0%
							grade 2 events	1522	1330	11781	1487	6564	3392
								2%	2%	13%	2%	8%	4%
							grade 3 events	739	662	1848	714	3122	1730
								1%	1%	2%	1%	3%	2%
							grade 4 events	682	706	1713	740	3121	1648
								1%	1%	1%	1%	3%	2%
							grade 5 events	2098	2386	6723	2634	7844	3290
								3%	3%	7%	4%	9%	4%
							grade 6 events	1221	1226	20754	1399	17549	3974
								1%	1%	23%	2%	21%	5%
							grade 7 events	54249	52188	40907	53066	38645	59467
								84%	84%	45%	83%	48%	75%

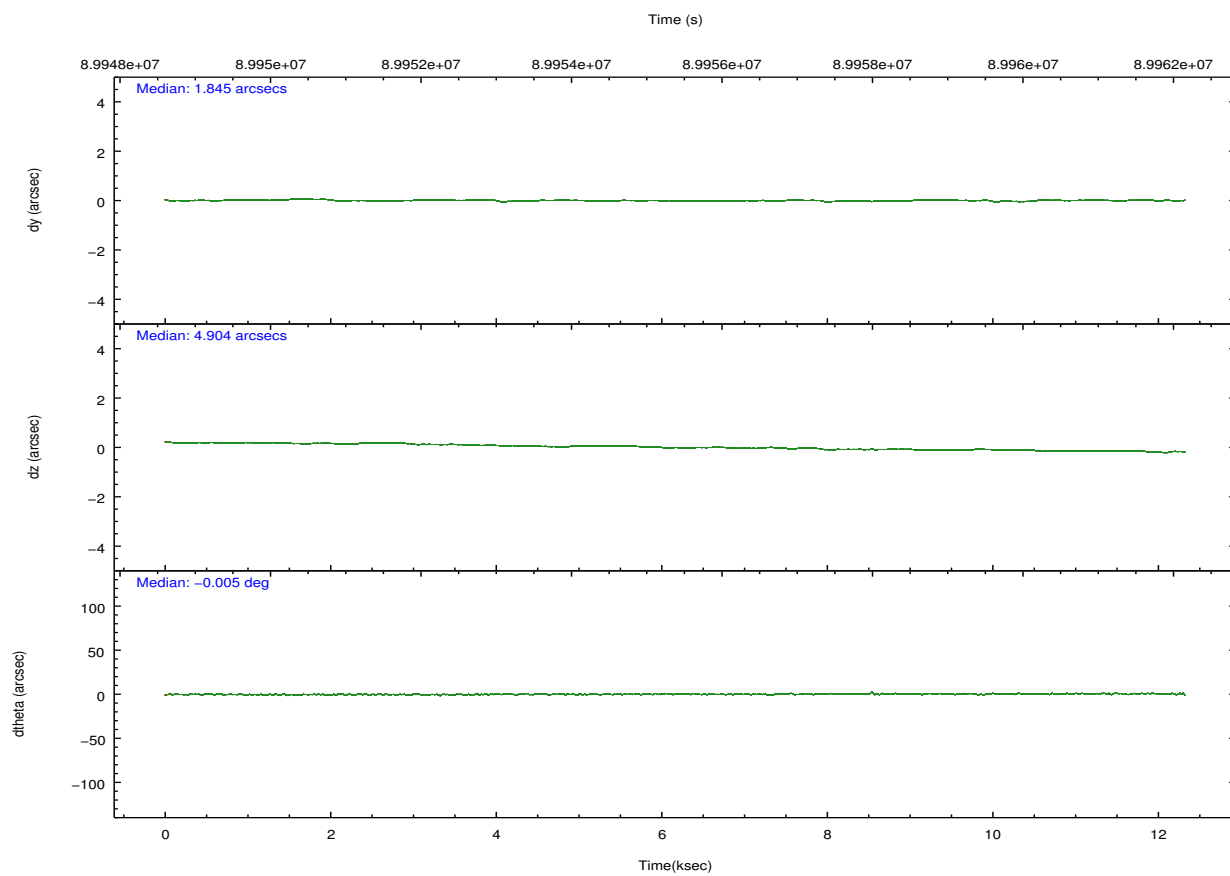
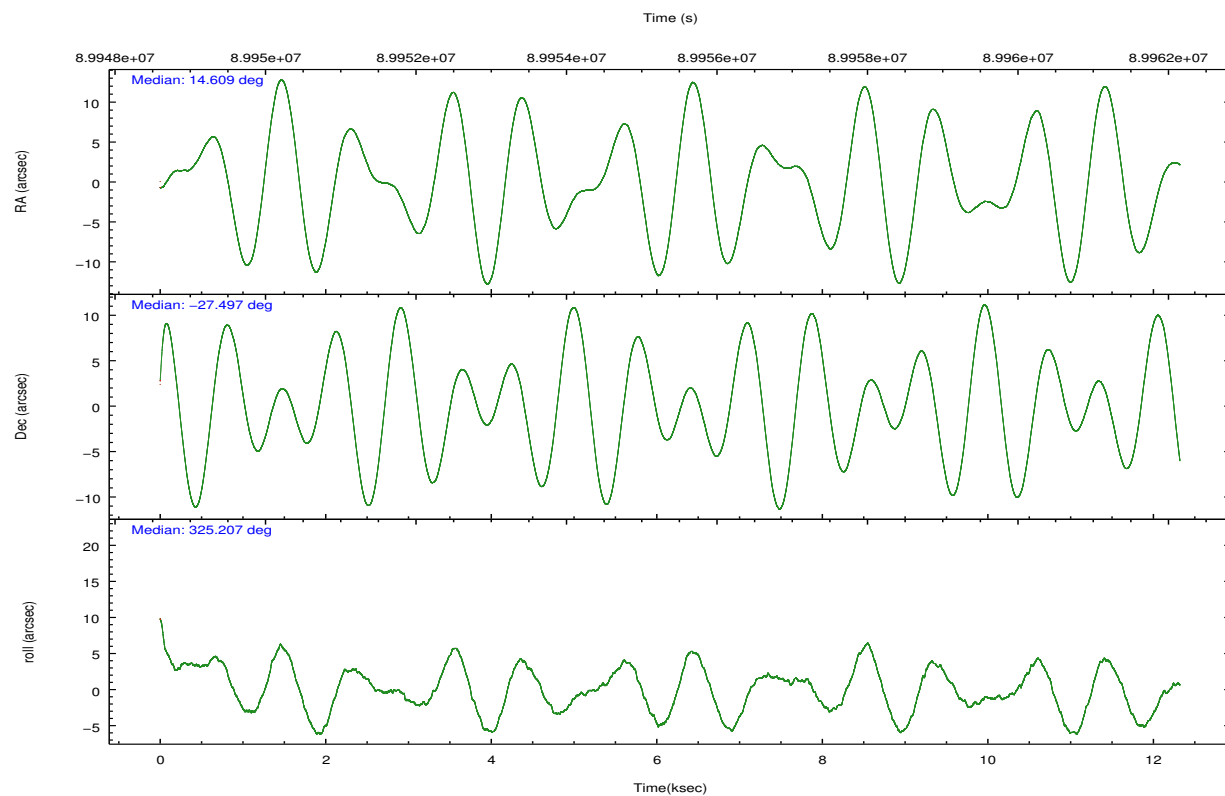
2.2 Compared Parameters

Parameter	Planned	Actual
Instrument	ACIS	ACIS
Detector	ACIS-235678	ACIS-235678
Grating	NONE	NONE
Data mode	FAINT	FAINT
Observation mode	POINTING	POINTING
[deg] Pointing RA	14.578764	14.60951744684854
[deg] Pointing Dec	-27.494640	-27.49668276569956
[deg] Pointing Roll	325.042093	325.2129293393114
[mm] SIM focus pos	-0.684267	-0.6828225247311905
[mm] SIM defocus	0	0.001444936568705701
[mm] SIM translation stage pos	-190.132523	-190.1400660498719
[mm] SIM translation stage offset	0	0.00754346686406393
[s] Observation start time (MET)	89949536.184000	89948512.68254399
Observation start date	2000-11-07T01:57:52	2000-11-07T01:41:52
[s] Observation end time (MET)	89961536.184000	89962135.958059
Observation end date	2000-11-07T05:17:52	2000-11-07T05:28:55
Read mode	TIMED	TIMED

Parameter	Planned	Actual
Obspar format version number	7	7
Obspar file type	PREDICTED	ACTUAL
Obspar update status	NONE	UPDATED
Number of optional ACIS chips dropped	0	0
On-chip summing requested	N	N
Subarray requested	NONE	NONE
Alternating exposures requested	N	N
[s] Primary exposure time	0.000000	3.2

2.3 Aspect



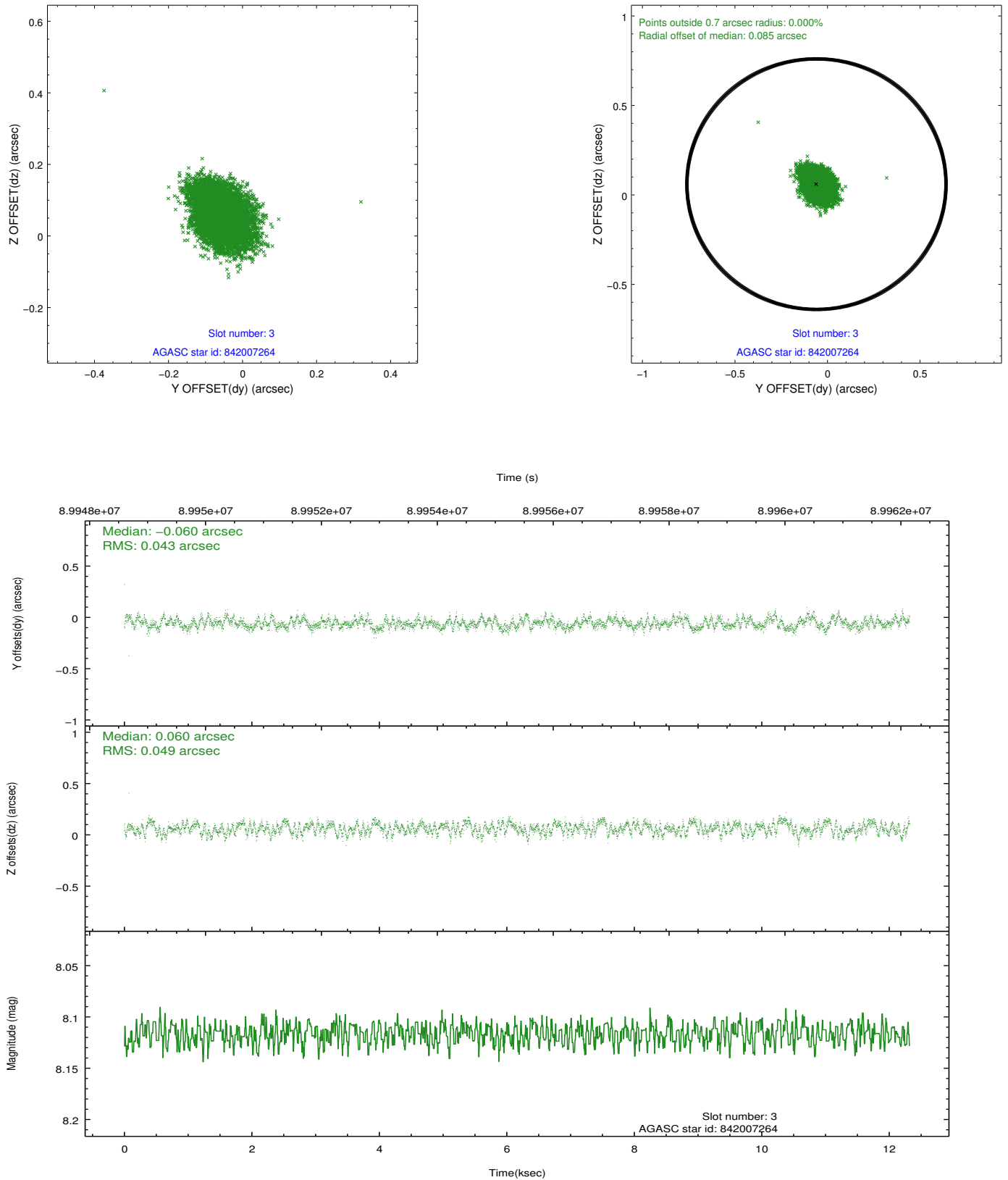


Slot Statistics

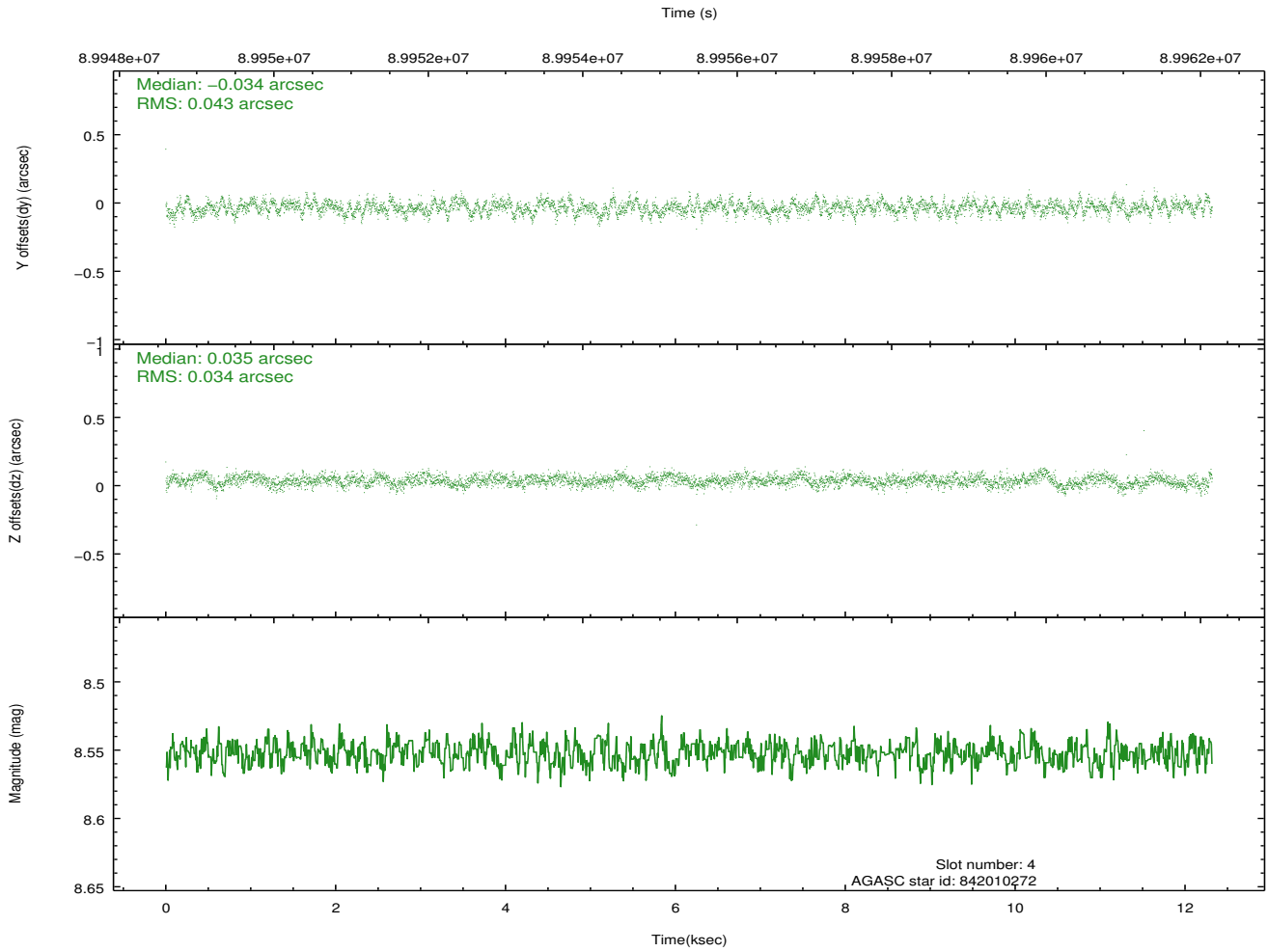
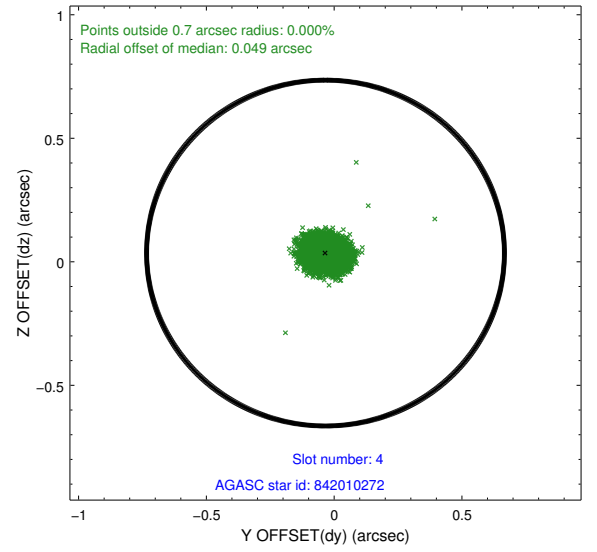
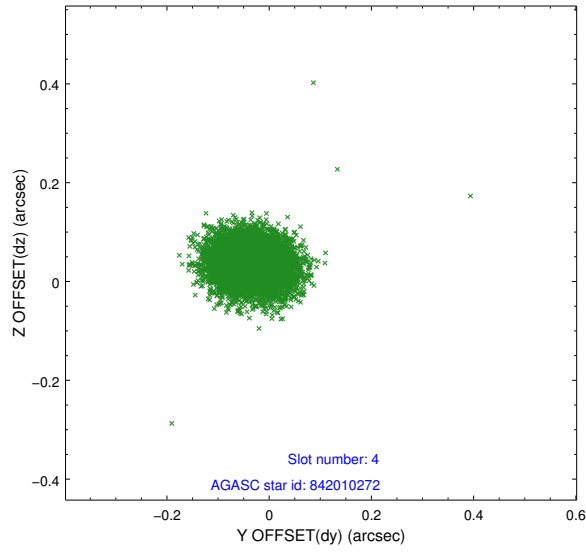
slot	status	id	mag	n_pts	med_dy	med_dz	dr1	dr2	ra	dec	mean_y	mean_z
0	FID	ACIS-S-2	7.11	3005	-0.042	-0.008	0.007	0.012	0.000000	0.000000	-754.47	-1726.04
1	FID	ACIS-S-4	7.20	3005	-0.007	0.022	0.006	0.011	0.000000	0.000000	2158.63	182.09
2	FID	ACIS-S-5	7.24	3006	0.019	-0.006	0.007	0.012	0.000000	0.000000	-1806.76	176.14
3	GUIDE	842007264	8.12	6010	-0.060	0.060	0.069	0.109	14.570692	-27.092422	-850.22	1171.88
4	GUIDE	842010272	8.55	6010	-0.034	0.035	0.057	0.093	15.374338	-27.450780	1997.72	1579.48
5	GUIDE	842017400	8.70	6010	-0.019	-0.040	0.076	0.122	14.466062	-28.061705	877.70	-1878.08
6	GUIDE	842015088	9.31	6006	-0.074	-0.053	0.087	0.145	13.933025	-27.893682	-856.59	-2359.48
7	GUIDE	842008736	10.39	6006	0.185	-0.006	0.133	0.223	14.870220	-27.799337	1390.71	-368.35

2.4 Star Slots

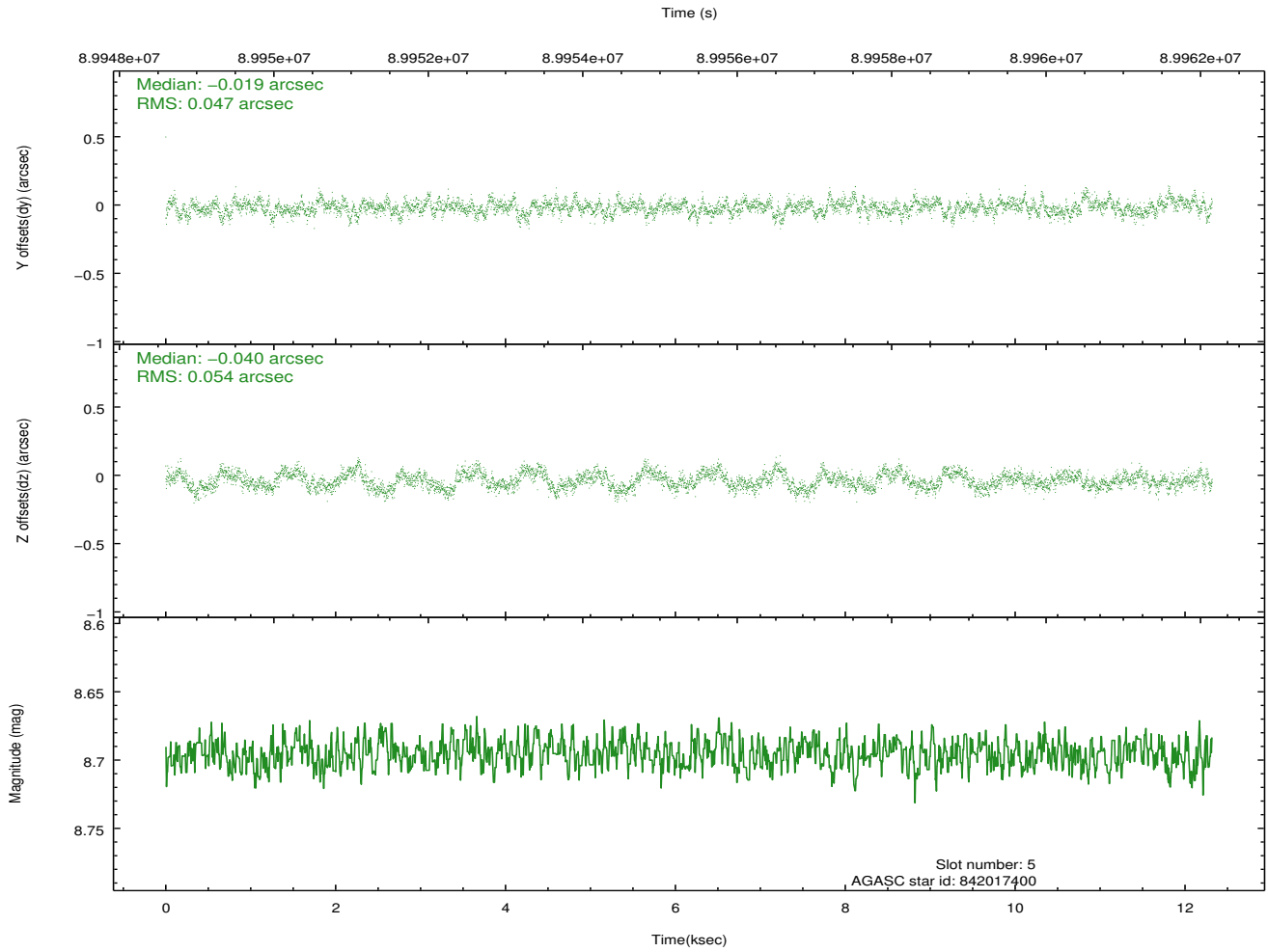
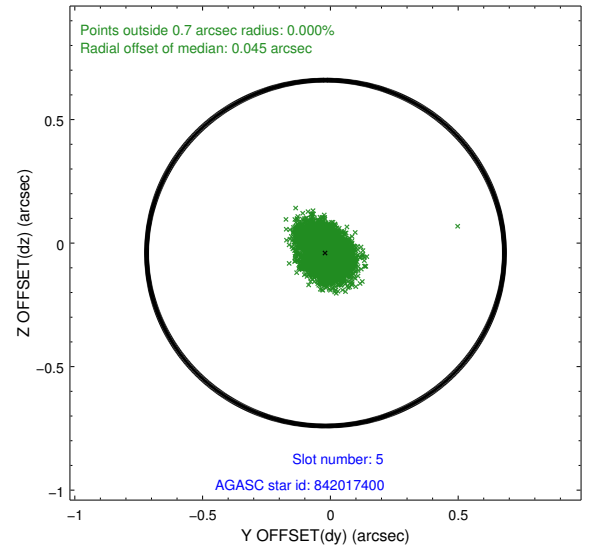
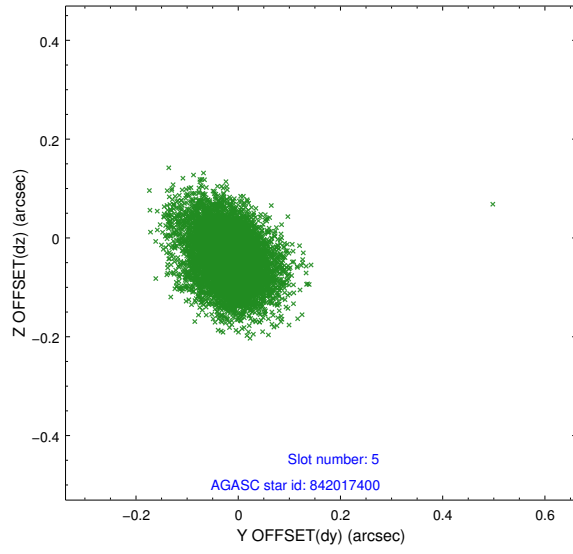
2.4.1 Slot 3



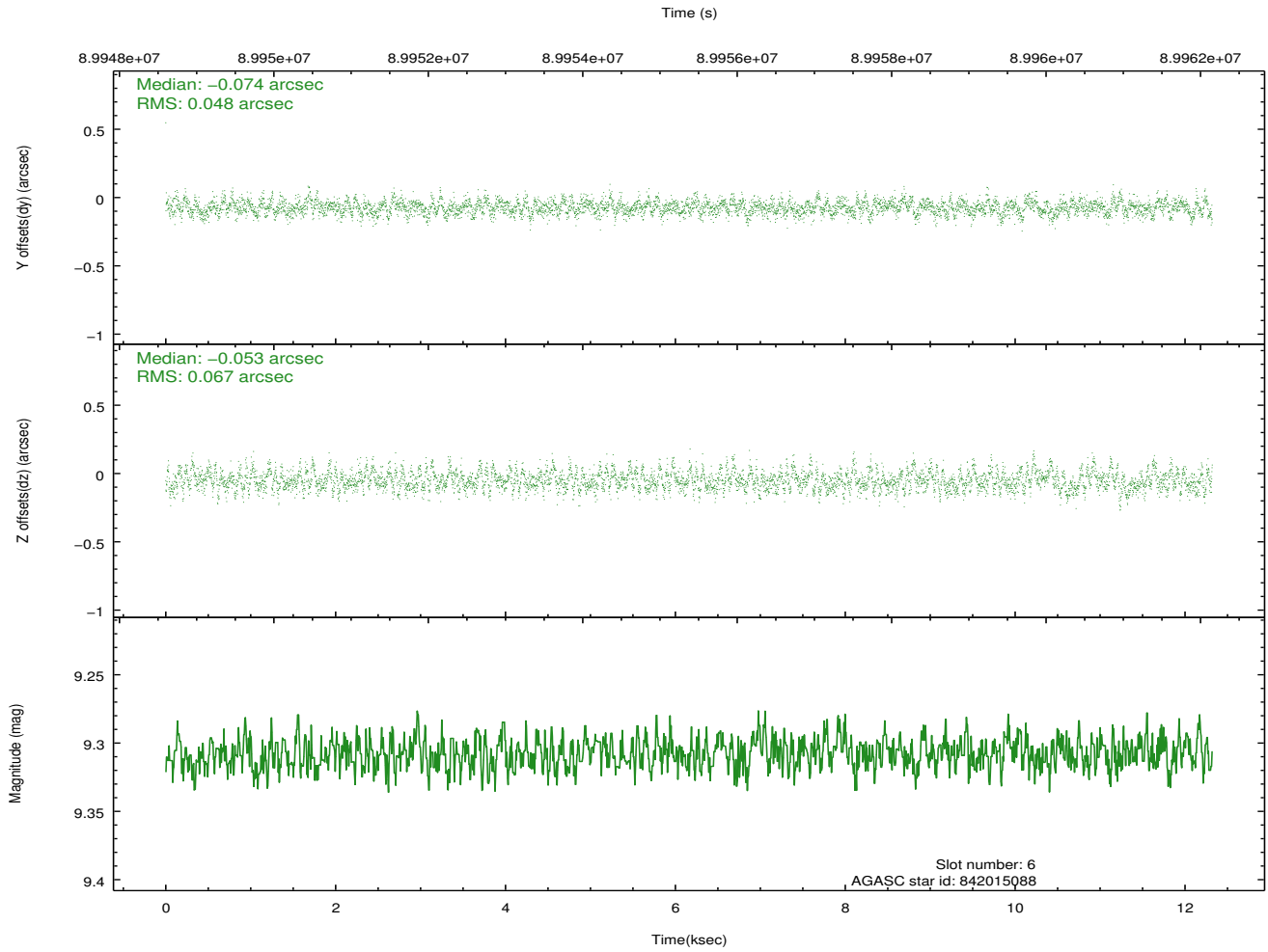
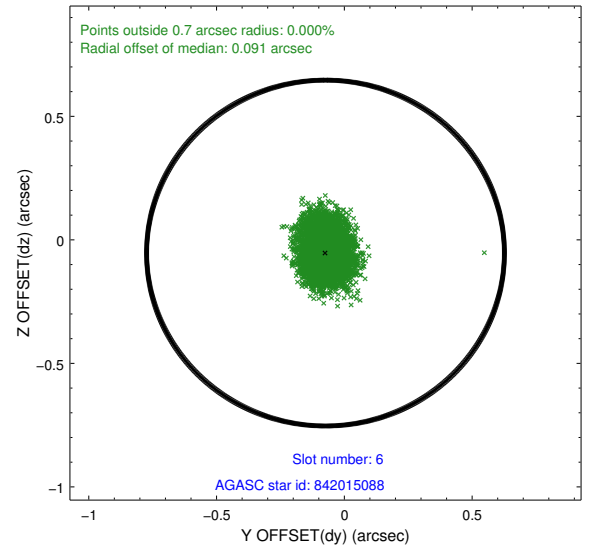
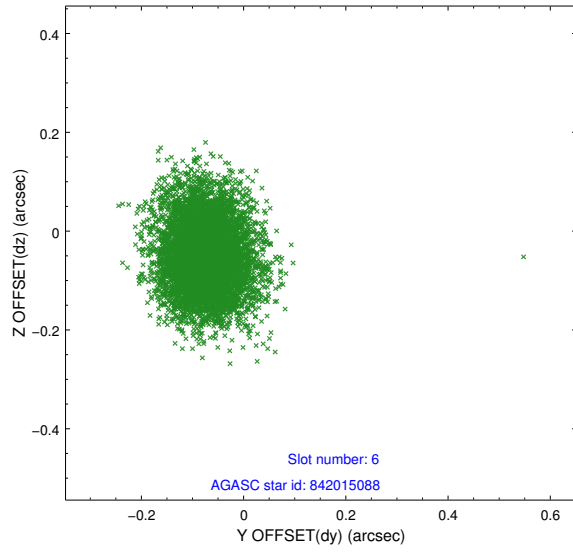
2.4.2 Slot 4



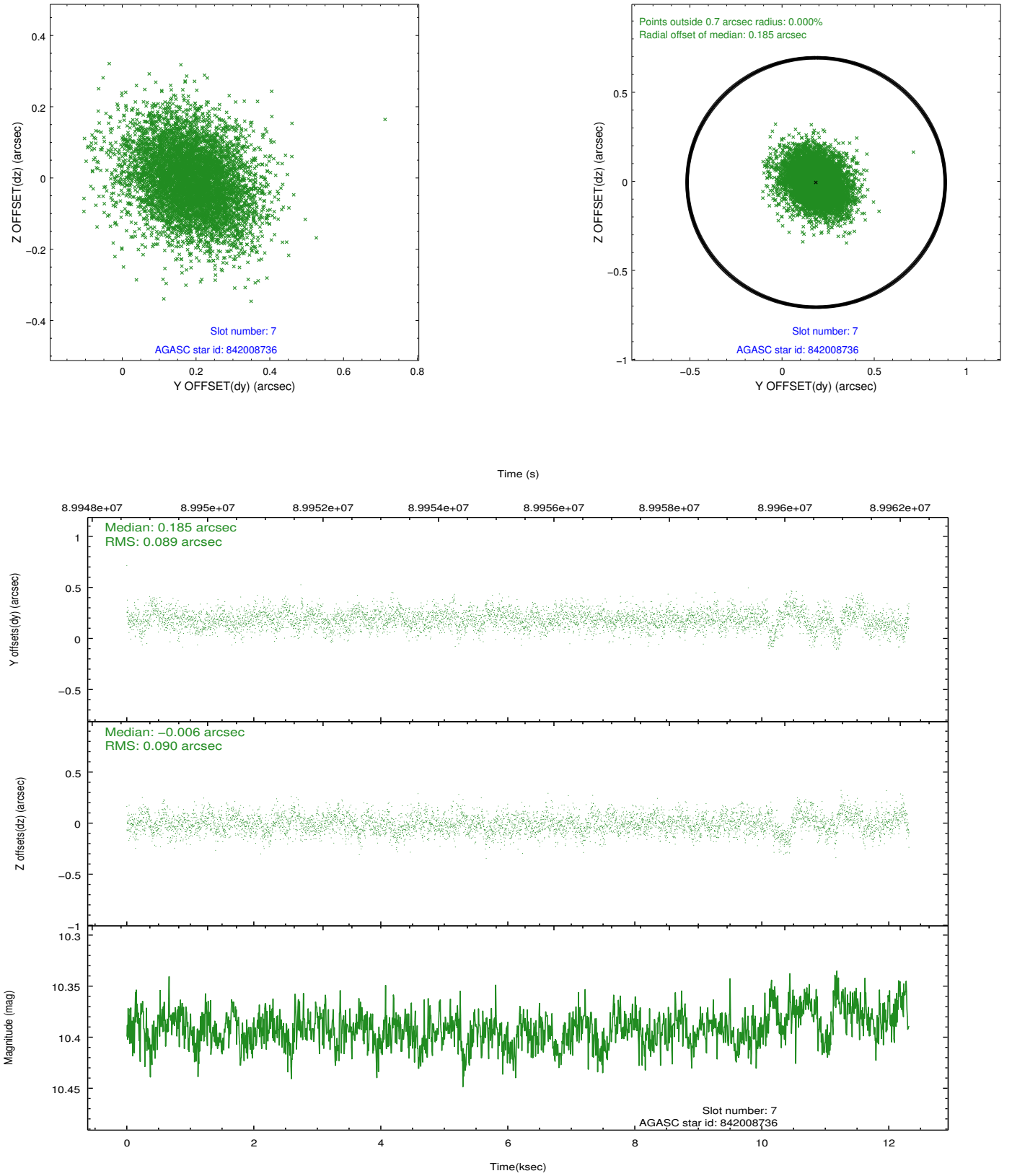
2.4.3 Slot 5



2.4.4 Slot 6

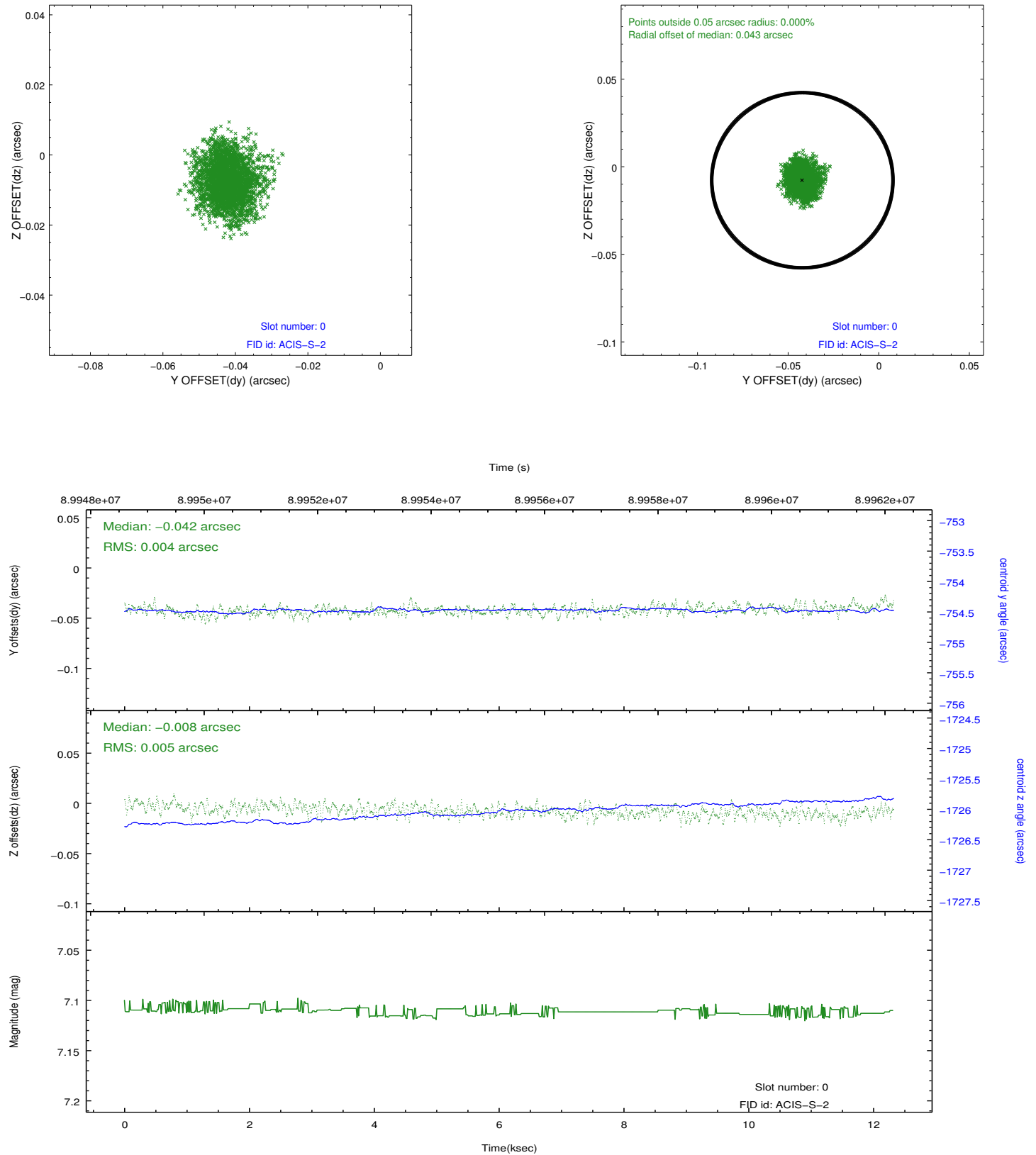


2.4.5 Slot 7

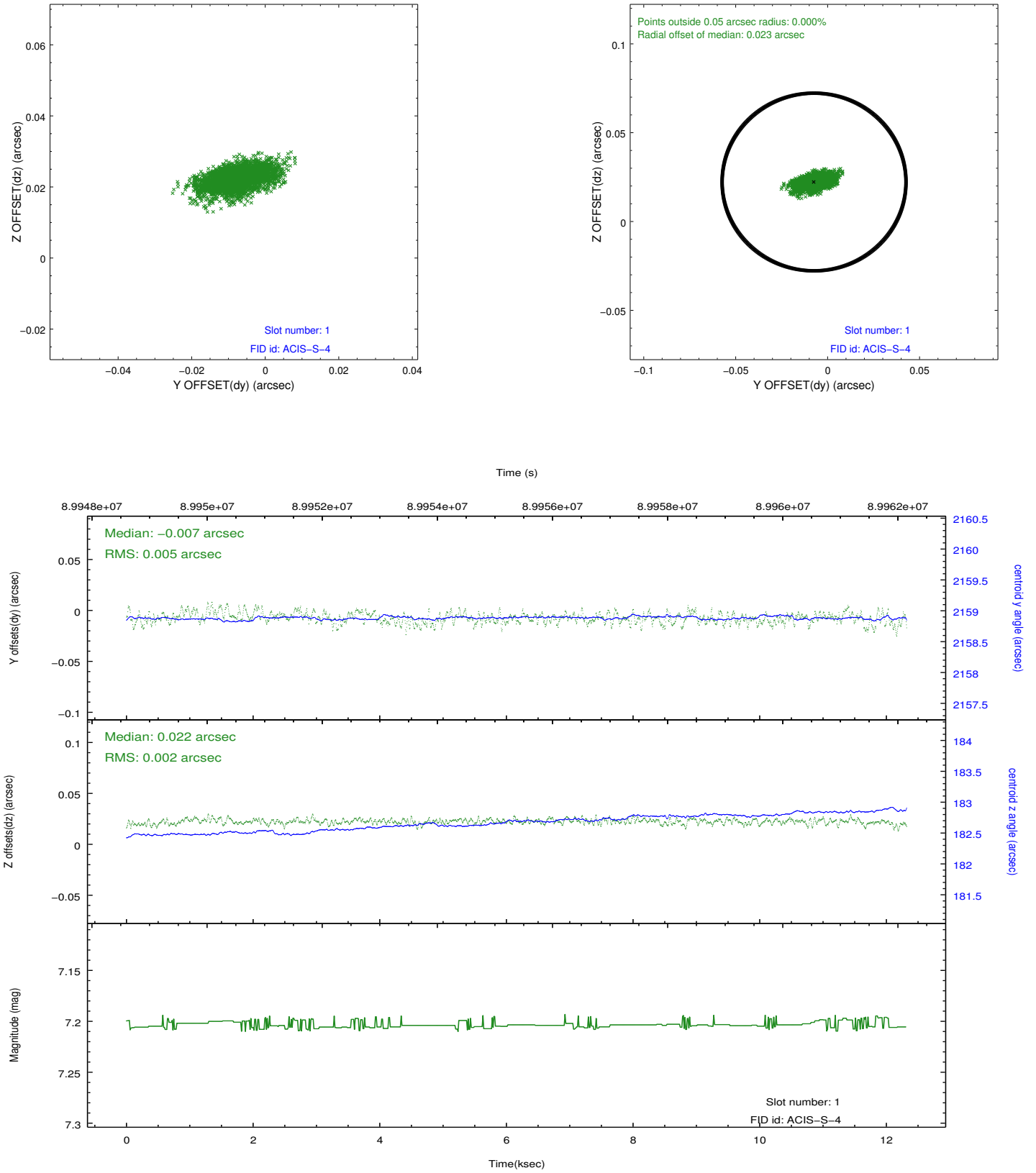


2.5 FID Slots

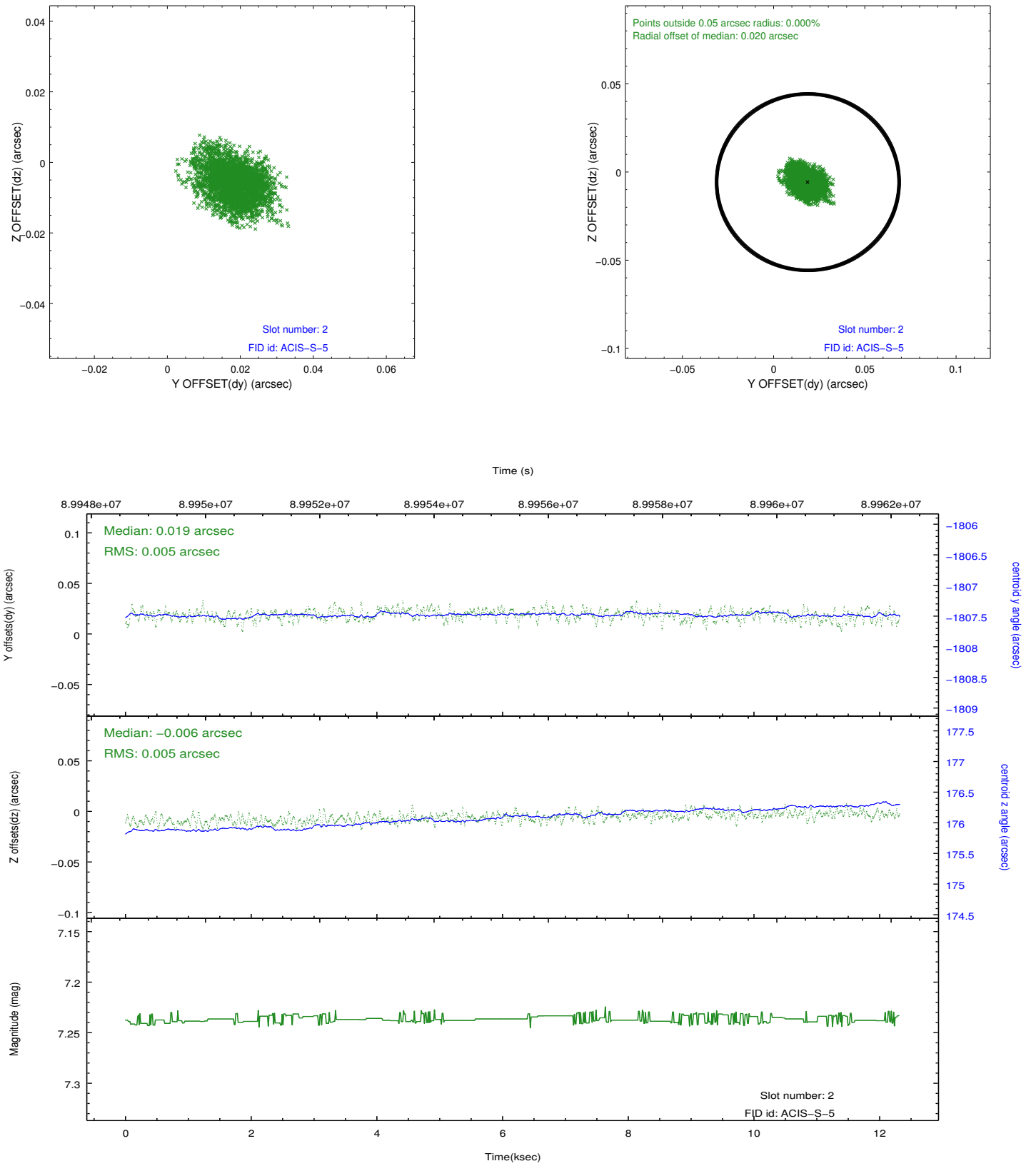
2.5.1 Slot 0



2.5.2 Slot 1



2.5.3 Slot 2



A Summary

A.1 Status

V&V Scientist	Beth Sundheim
V&V Date (YYYY-MM-DD)	2012.09.10
V&V Edition	1
V&V Disposition and Status	OK
V&V Charge Time	11.92

A.2 Comments