

# V&V Reference Report

## L2 ASCDS Version : 7.6.10

Observation 2247 - L2 Version 001  
Chandra X-Ray Center

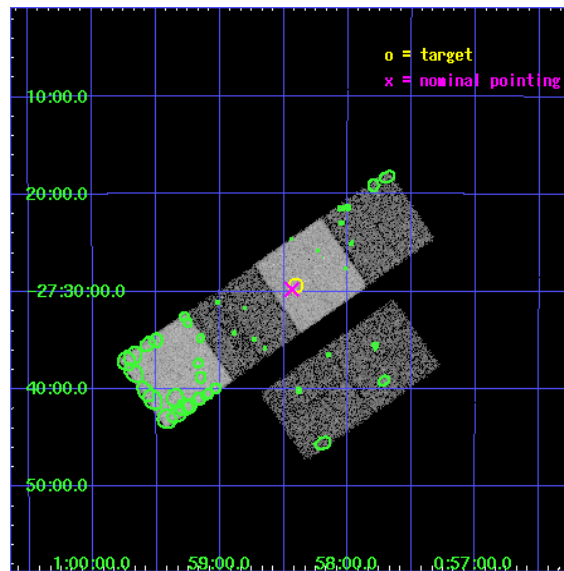
L2 Processing Date : Jun 14 2007

## Contents

<b>1</b>	<b>Front</b>	<b>2</b>
<b>2</b>	<b>OBI</b>	<b>3</b>
2.1	OBI . . . . .	3
2.1.1	Images . . . . .	3
2.1.2	Bias . . . . .	3
2.1.3	Parameters . . . . .	4
2.1.4	Events . . . . .	4
2.2	Compared Parameters . . . . .	5
2.3	Aspect . . . . .	6
2.4	Star Slots . . . . .	9
2.4.1	Slot 3 . . . . .	9
2.4.2	Slot 4 . . . . .	10
2.4.3	Slot 5 . . . . .	11
2.4.4	Slot 6 . . . . .	12
2.4.5	Slot 7 . . . . .	13
2.5	FID Slots . . . . .	14
2.5.1	Slot 0 . . . . .	14
2.5.2	Slot 1 . . . . .	15
2.5.3	Slot 2 . . . . .	16
<b>3</b>	<b>Point Sources</b>	<b>17</b>
<b>A</b>	<b>Summary</b>	<b>18</b>
A.1	Status . . . . .	18
A.2	Comments . . . . .	18

# 1 Front

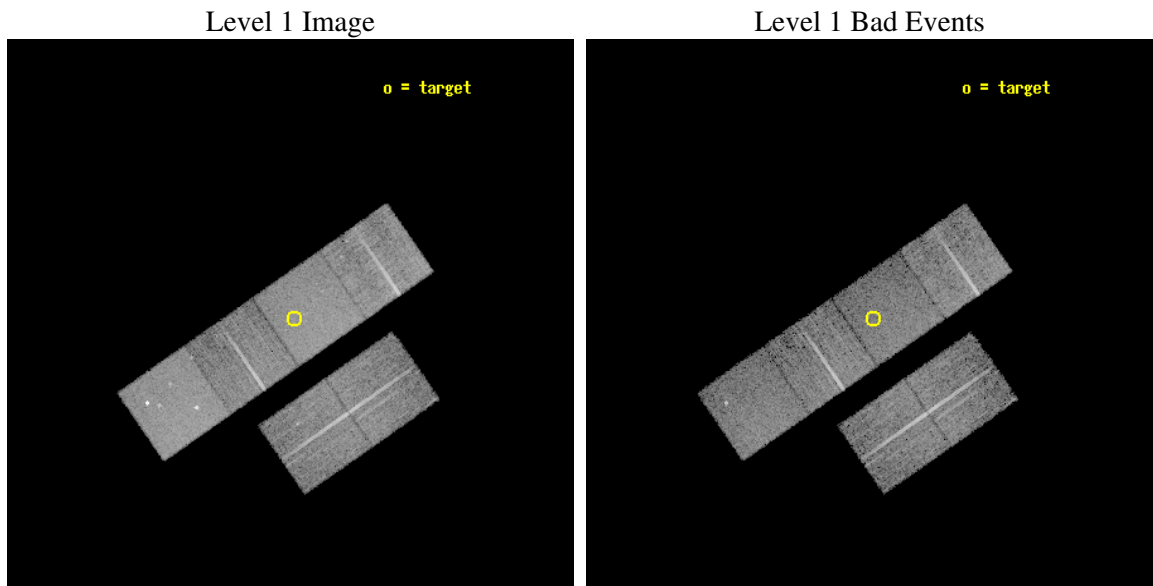
seq_num	900074
obs_id	2247
title	THE NATURE OF NARROW-LINE, FIR-LUMINOUS, X-RAY GALAXIES
observer	PROFESSOR TOM SHANKS
object	GSGP4X:109
dtcycle	0
cycle	P
ra_targ	14.601667
dec_targ	-27.489722
ra_nom	14.609517446849
dec_nom	-27.4966827657
roll_nom	325.21292933931
revision	2
ontime	11920.000011101
livetime	11769.061793598
ontime2	11920.000011101
ontime3	11916.759050861
ontime5	11920.000011101
ontime6	11920.000011101
ontime7	11920.000011101
ontime8	11920.000011101
l2events	97128



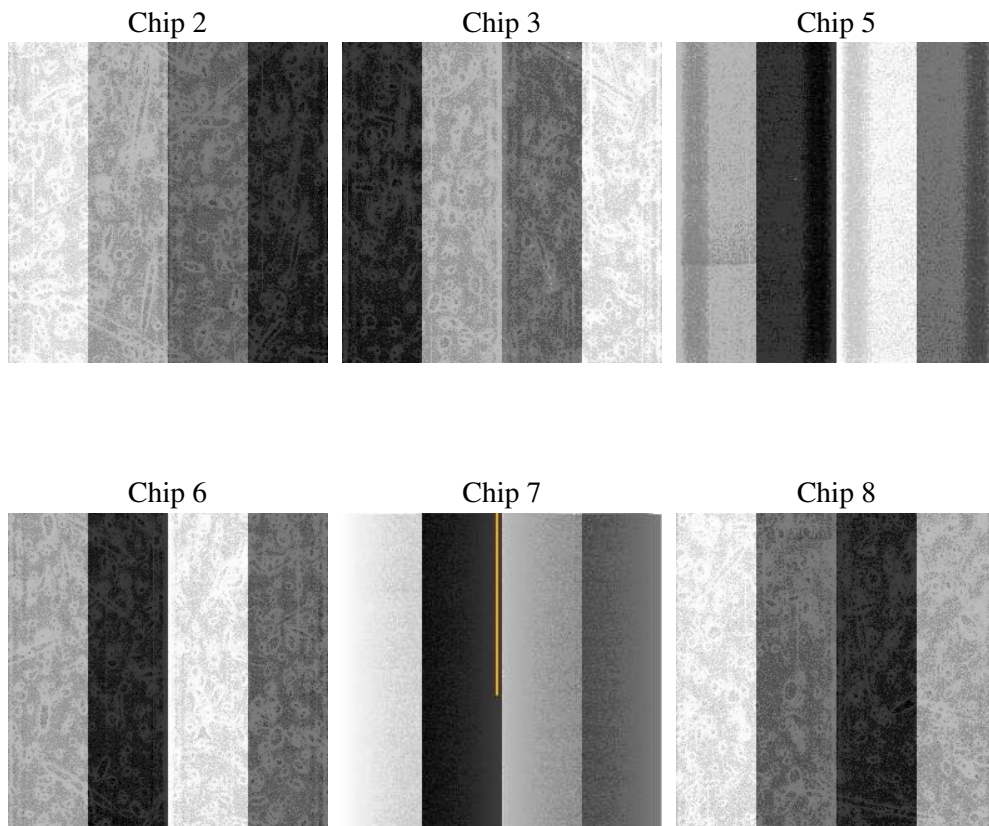
## 2 OBI

### 2.1 OBI

#### 2.1.1 Images



#### 2.1.2 Bias



### 2.1.3 Parameters

obi_num	0
ascdsver	7.6.10
caldbver	3.4.0
date	2007-06-14T13:49:44
revision	2

sched_exp_time	12000.000000
ontime	11920.000011101
ontime2	11920.000011101
ontime3	11916.759050861
ontime5	11920.000011101
ontime6	11920.000011101
ontime7	11920.000011101
ontime8	11920.000011101
l1events	437151

### 2.1.4 Events

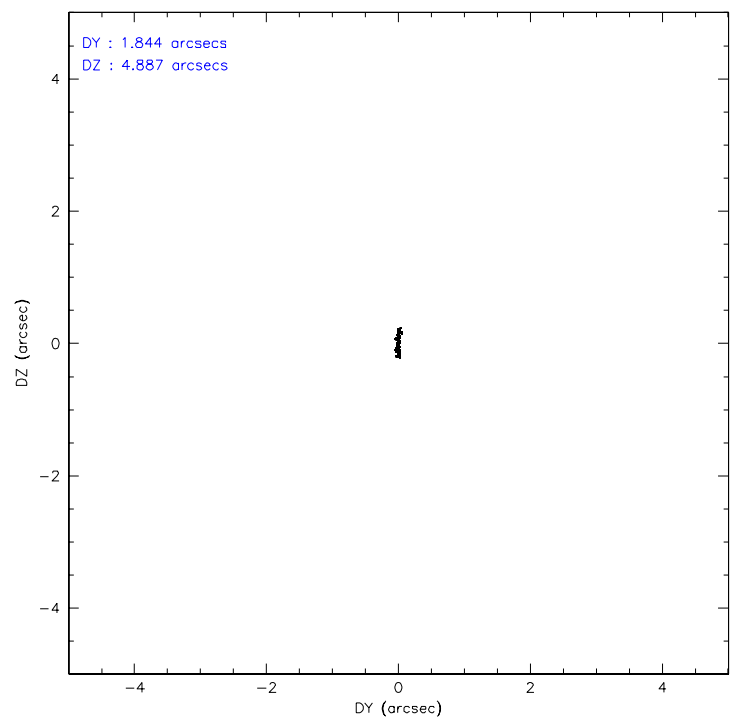
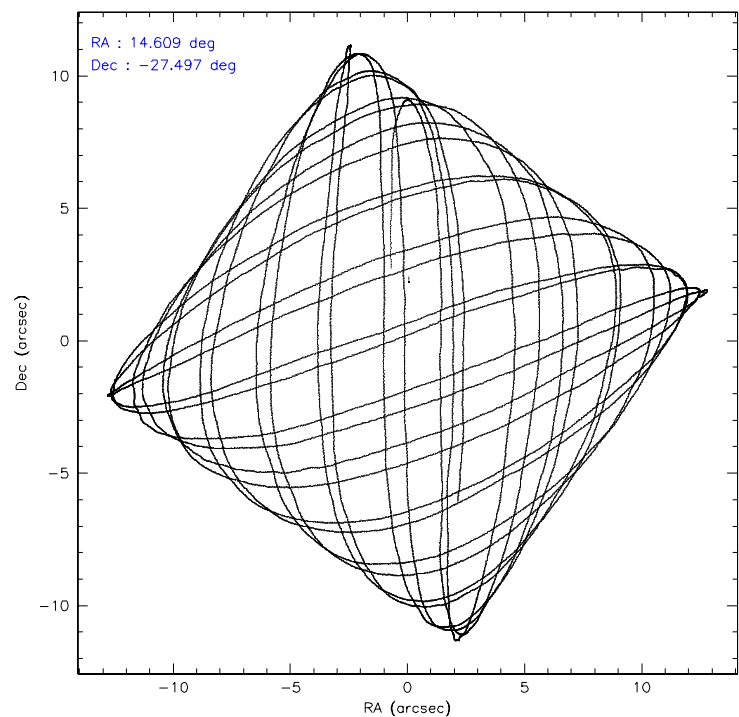
	ccd 2	ccd 3	ccd 5	ccd 6	ccd 7	ccd 8
level 1 events	63929	61555	89494	63253	80208	78712
rejected events	56380	54600	48044	55720	46569	62799
rejected %	88%	88%	53%	88%	58%	79%

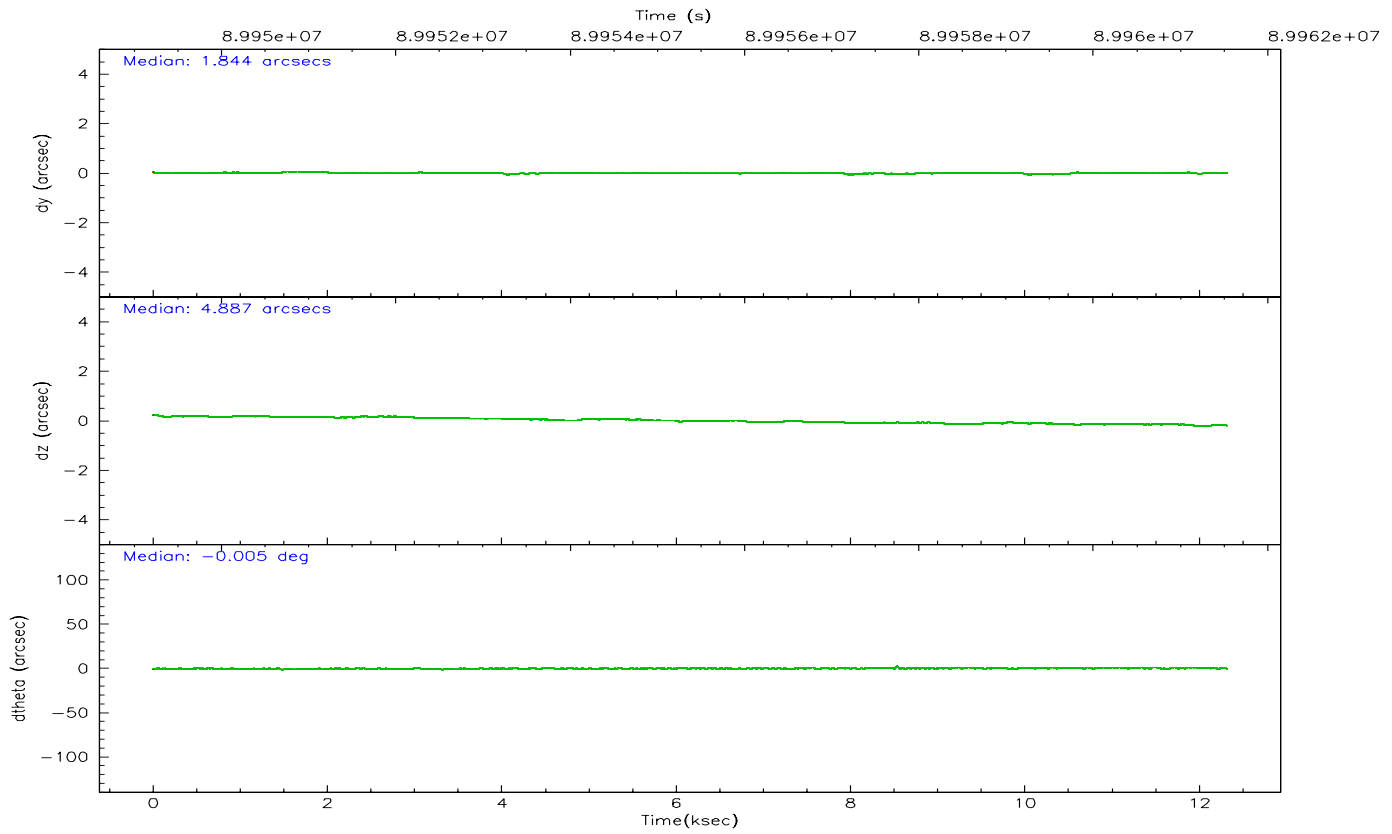
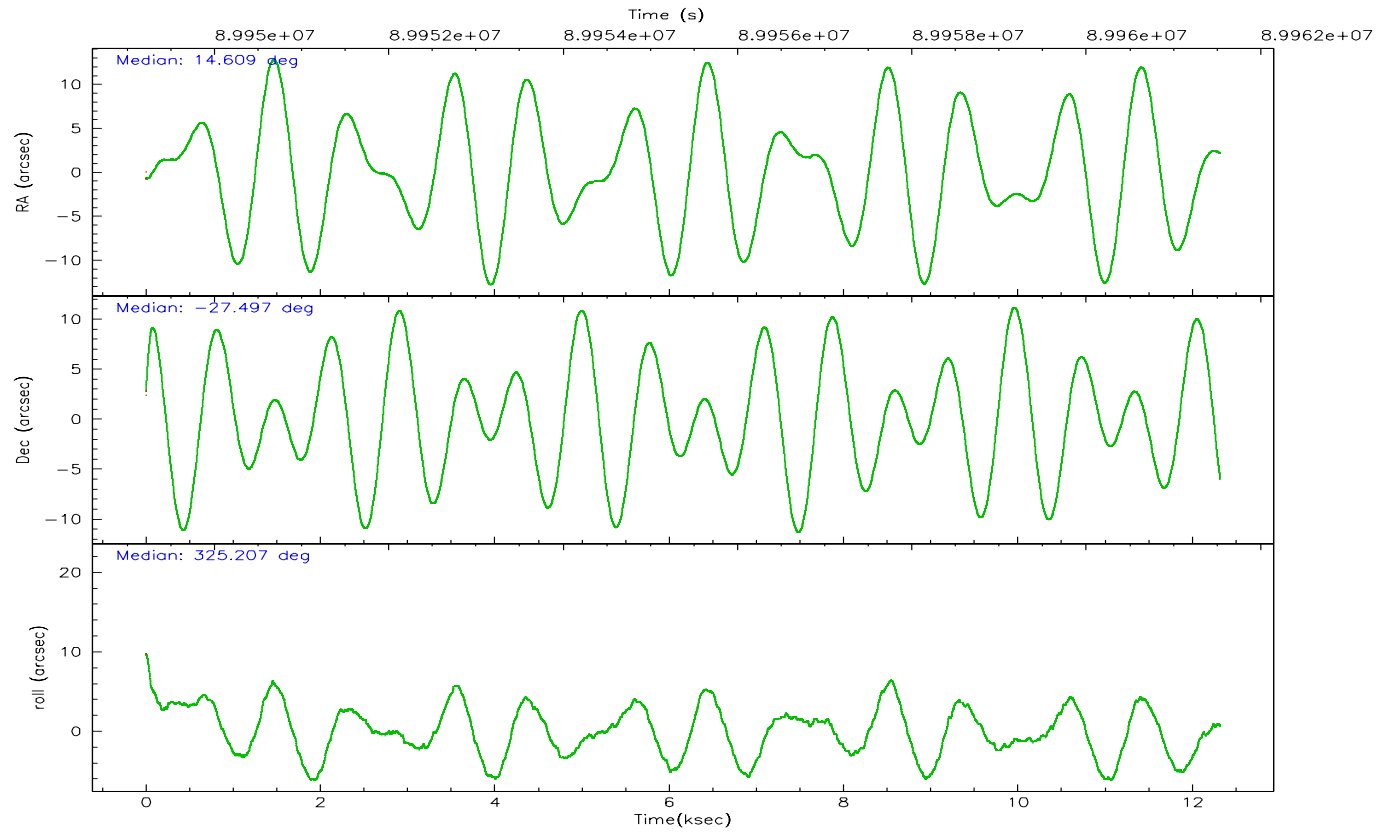
	ccd 2	ccd 3	ccd 5	ccd 6	ccd 7	ccd 8
grade 0 events	3386	3034	5360	3194	3294	5170
	5%	4%	5%	5%	4%	6%
grade 1 events	32	23	408	19	69	41
	0%	0%	0%	0%	0%	0%
grade 2 events	1522	1330	11781	1487	6564	3392
	2%	2%	13%	2%	8%	4%
grade 3 events	739	662	1848	714	3122	1730
	1%	1%	2%	1%	3%	2%
grade 4 events	682	706	1712	740	3120	1648
	1%	1%	1%	1%	3%	2%
grade 5 events	2098	2386	6723	2634	7844	3290
	3%	3%	7%	4%	9%	4%
grade 6 events	1221	1226	20754	1399	17549	3974
	1%	1%	23%	2%	21%	5%
grade 7 events	54249	52188	40908	53066	38646	59467
	84%	84%	45%	83%	48%	75%

## 2.2 Compared Parameters

Parameter	Planned	Actual	Parameter	Planned	Actual
Instrument	ACIS	ACIS	Obspar format version number	6	6
Detector	ACIS-235678	ACIS-235678	Obspar file type	PREDICTED	ACTUAL
Grating	NONE	NONE	Obspar update status	NONE	UPDATED
Data mode	FAINT	FAINT	Number of optional ACIS chips dropped	0	0
Observation mode	POINTING	POINTING	On-chip summing requested	N	N
Pointing RA	14.578764	14.60951744684851	Subarray requested	NONE	NONE
Pointing Dec	-27.494640	-27.49668276569951	Alternating exposures requested	N	N
Pointing Roll	325.042093	325.2129293393115	Primary exposure time	0.000000	3.2
SIM focus pos (mm)	-0.684267	-0.6828225247311905			
SIM defocus (mm)	0	0.001444936568705701			
SIM translation stage pos (mm)	-190.132523	-190.1400660498719			
SIM translation stage offset (mm)	0	0.00754346686406393			
Observation start time	89949536.184000	89948512.68254399			
Observation start date	2000-11-07T01:57:52	2000-11-07T01:41:52			
Observation end time	89961536.184000	89962135.958059			
Observation end date	2000-11-07T05:17:52	2000-11-07T05:28:55			
Read mode	TIMED	TIMED			

## 2.3 Aspect





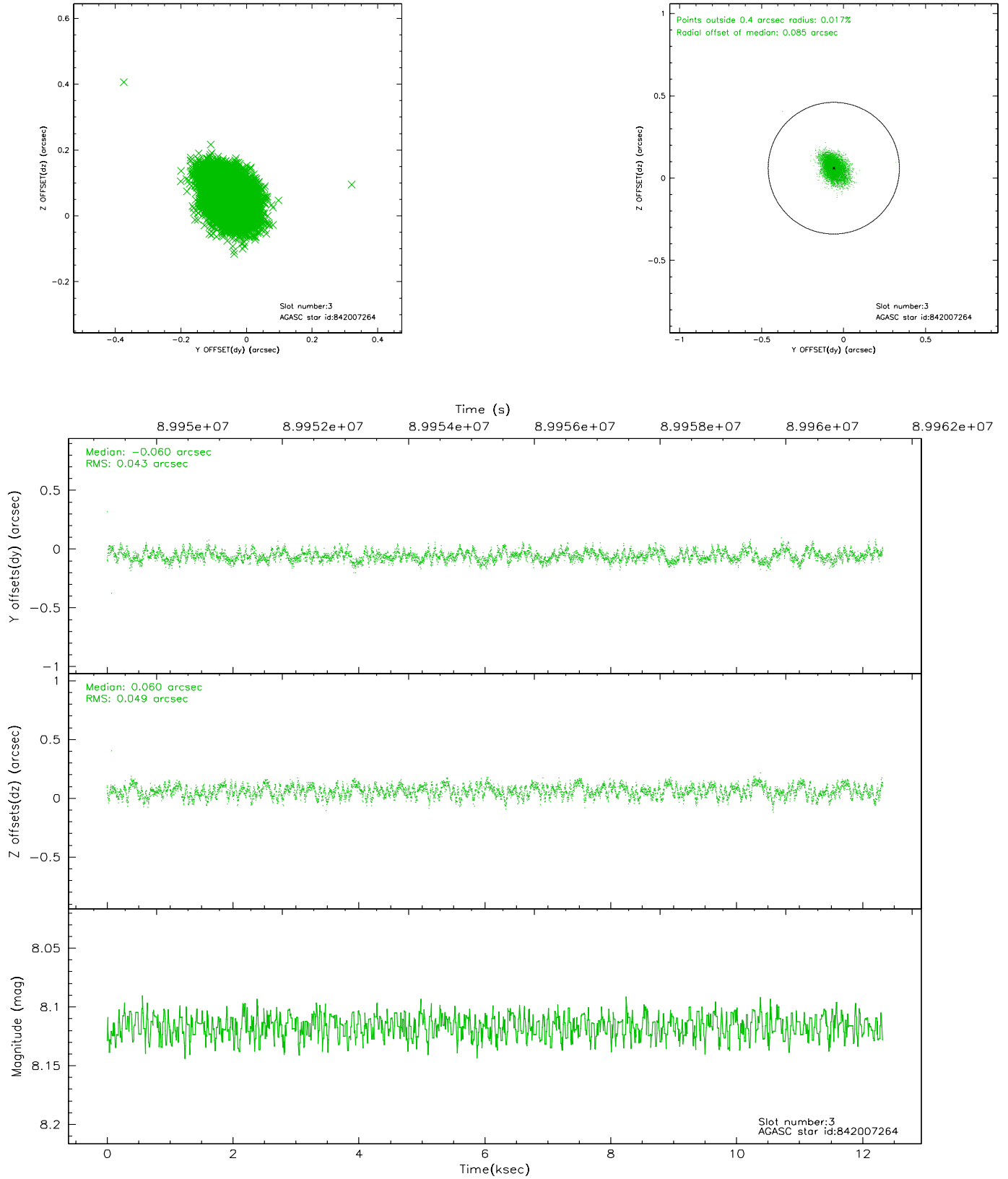
### Slot Statistics

slot	status	id	mag	n_pts	med_dy	med_dz	dr1	dr2	ra	dec	mean_y	mean_z
0	FID	ACIS-S-2	7.11	3005	-0.031	0.016	0.007	0.012	0.000000	0.000000	-754.46	-1726.00
1	FID	ACIS-S-4	7.20	3005	-0.050	0.011	0.005	0.009	0.000000	0.000000	2158.59	182.10
2	FID	ACIS-S-5	7.24	3006	0.049	-0.017	0.007	0.012	0.000000	0.000000	-1806.73	176.15
3	GUIDE	842007264	8.12	6010	-0.060	0.060	0.069	0.109	14.570692	-27.092422	-850.22	1171.88
4	GUIDE	842010272	8.55	6010	-0.034	0.035	0.057	0.093	15.374338	-27.450780	1997.72	1579.48
5	GUIDE	842017400	8.70	6010	-0.019	-0.040	0.076	0.122	14.466062	-28.061705	877.70	-1878.08
6	GUIDE	842015088	9.31	6006	-0.074	-0.053	0.087	0.145	13.933025	-27.893682	-856.59	-2359.48
7	GUIDE	842008736	10.39	6006	0.185	-0.006	0.133	0.223	14.870220	-27.799337	1390.71	-368.35

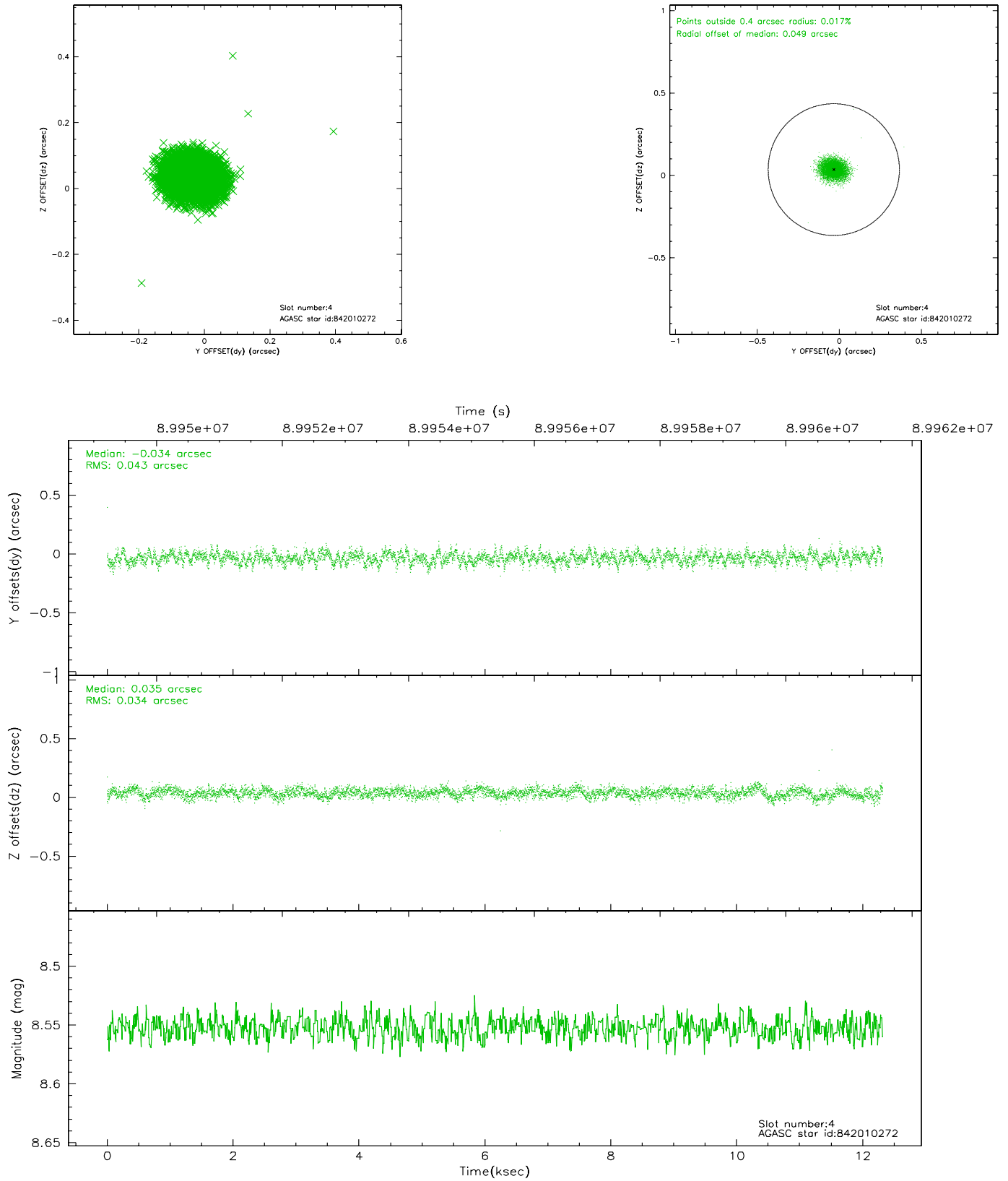


## 2.4 Star Slots

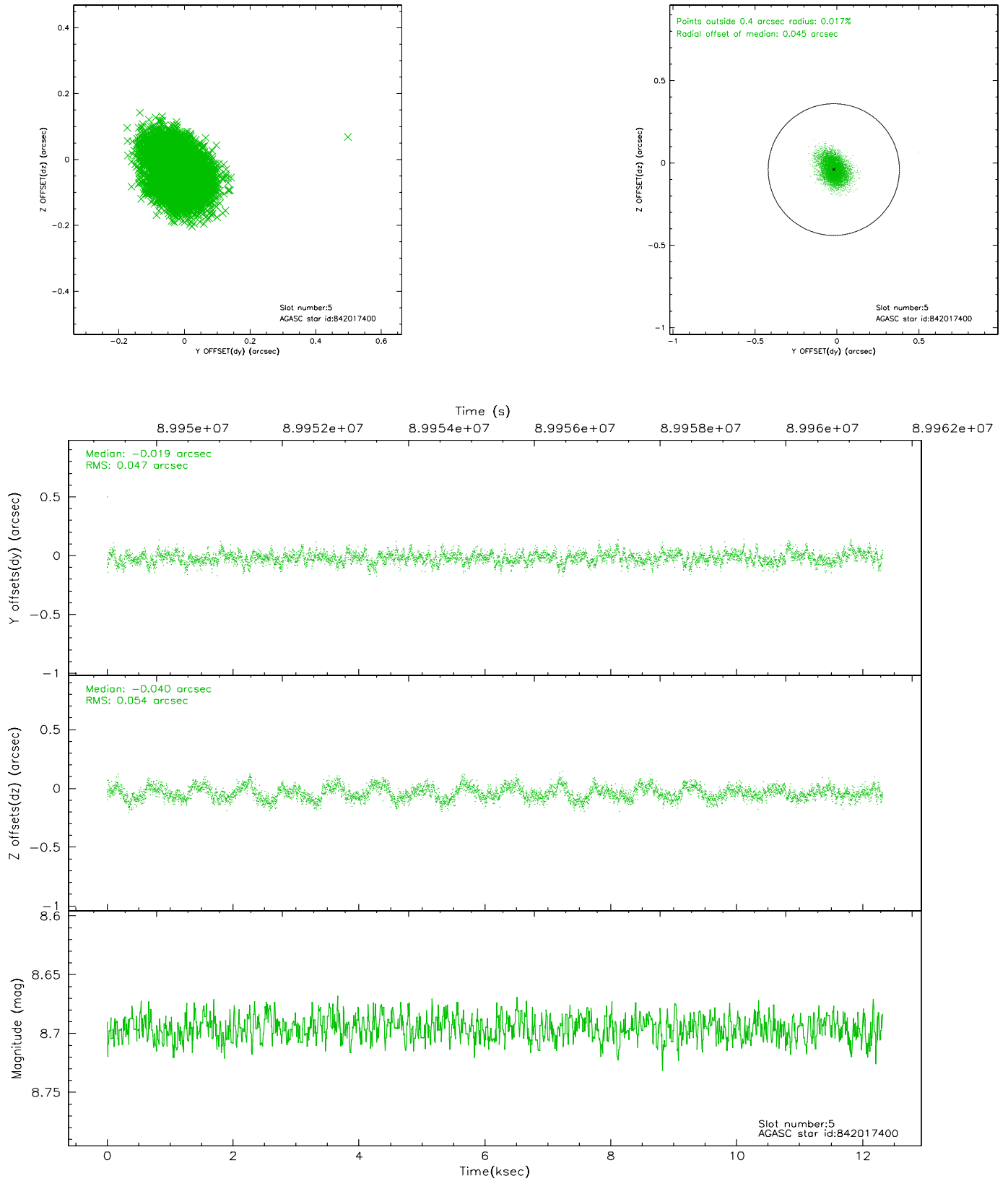
### 2.4.1 Slot 3



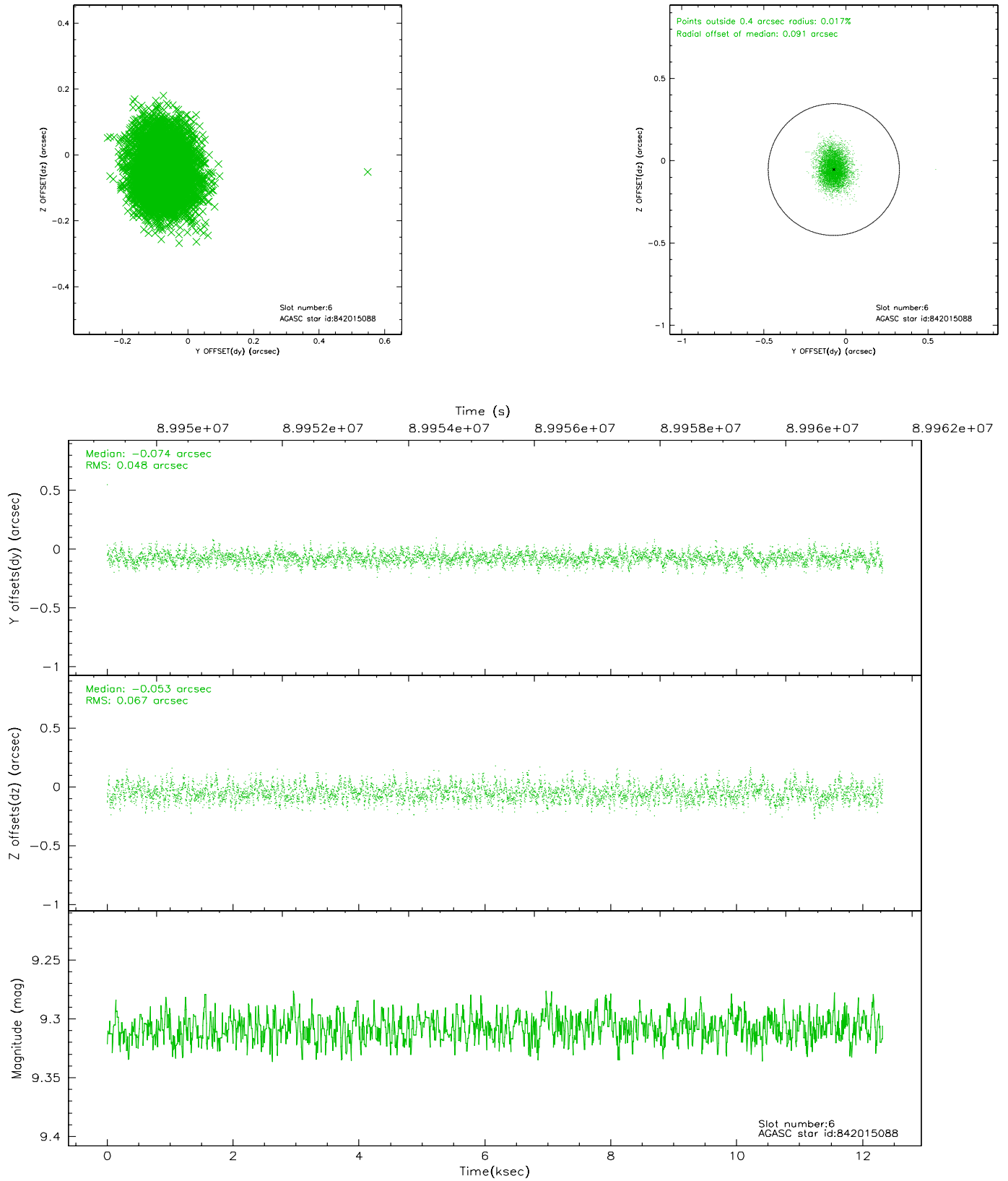
## 2.4.2 Slot 4



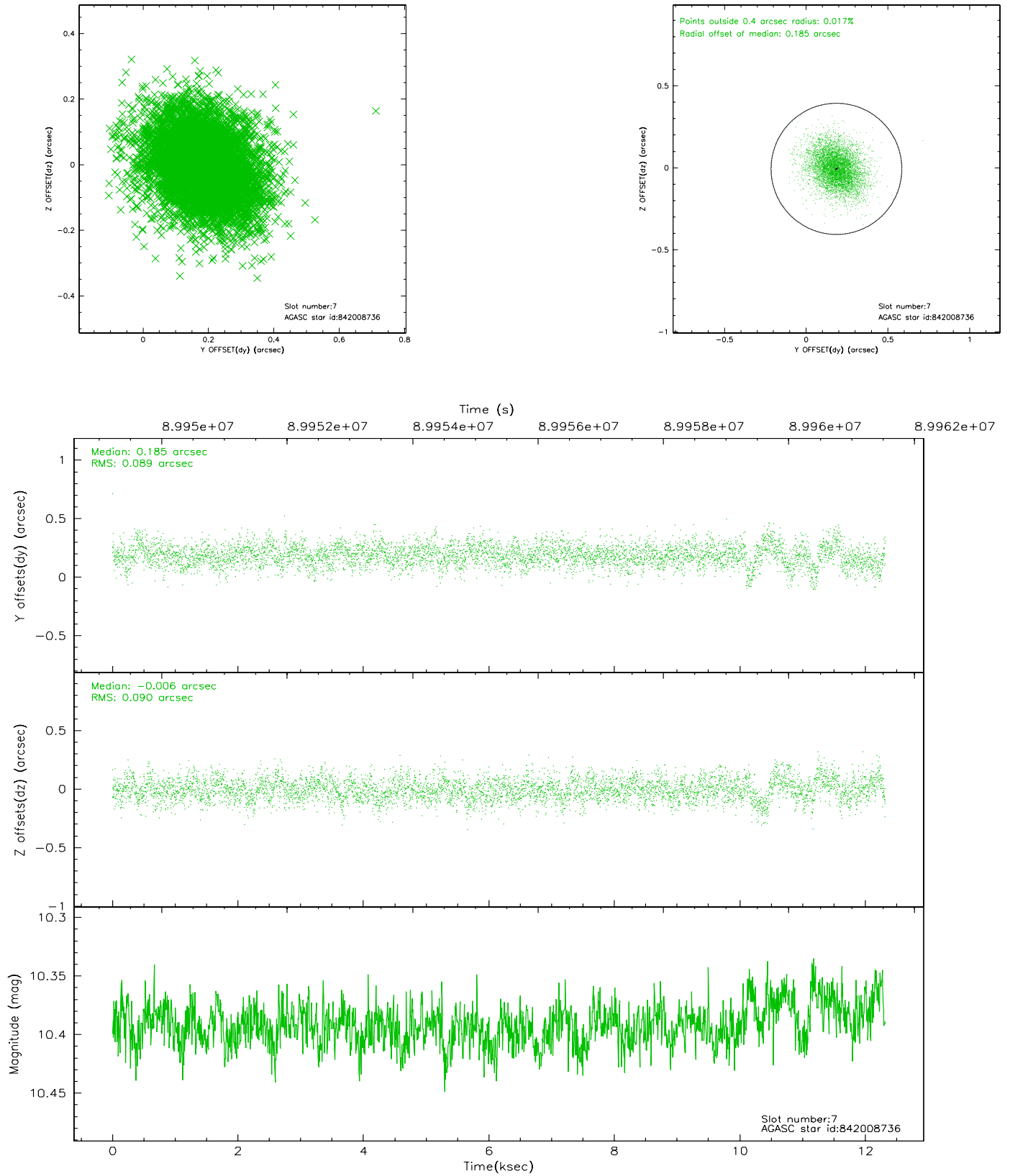
### 2.4.3 Slot 5



## 2.4.4 Slot 6

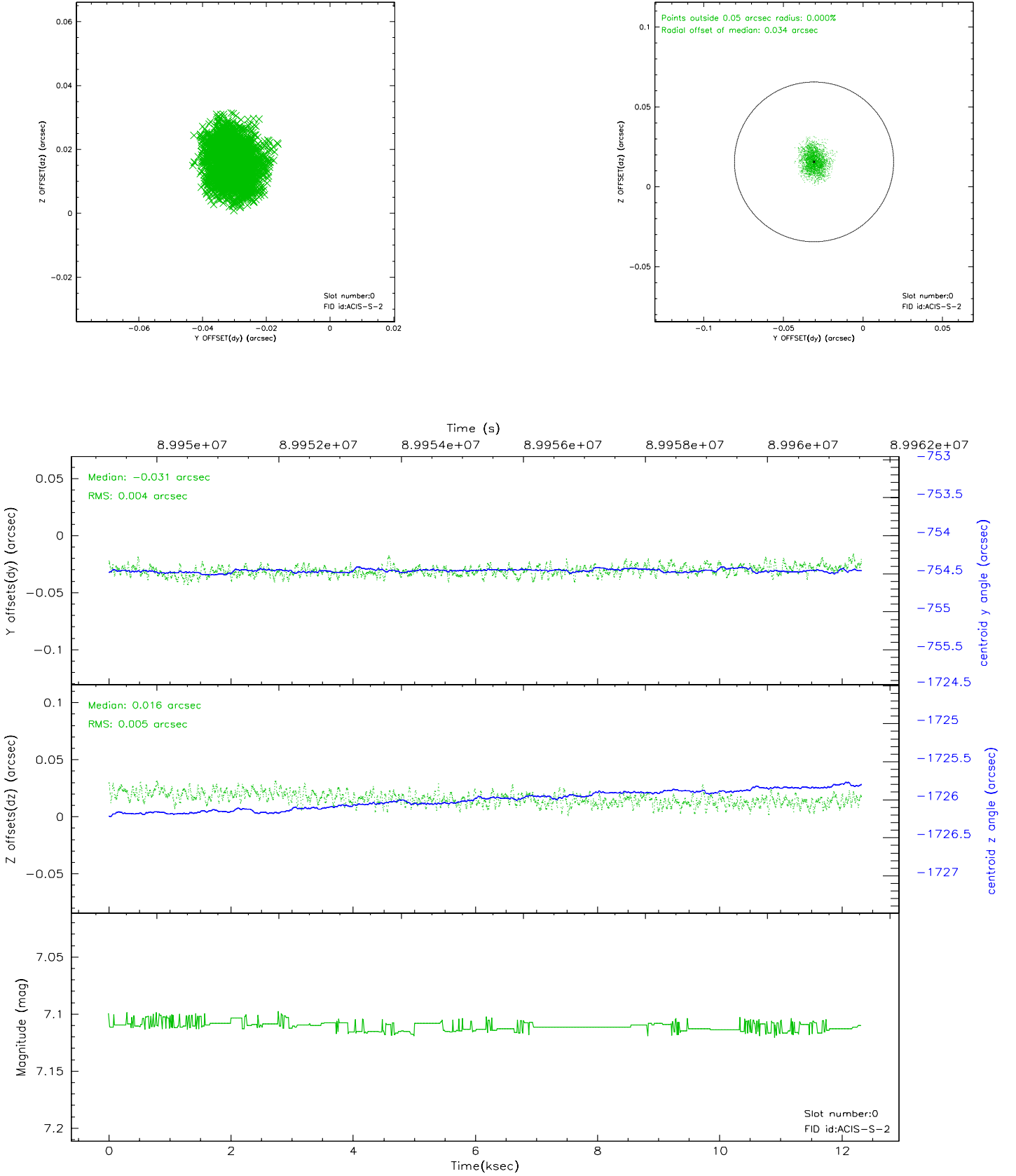


## 2.4.5 Slot 7

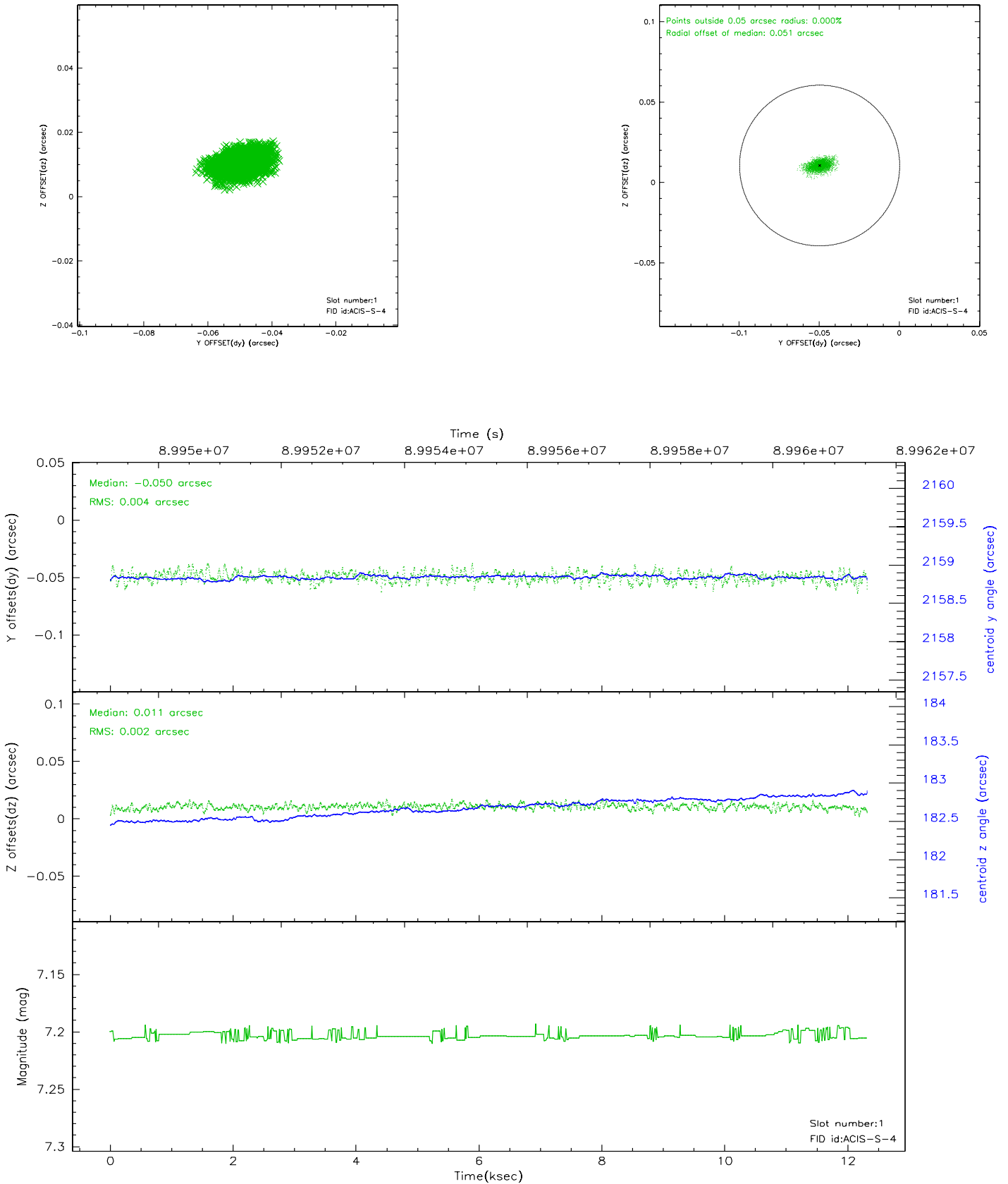


## 2.5 FID Slots

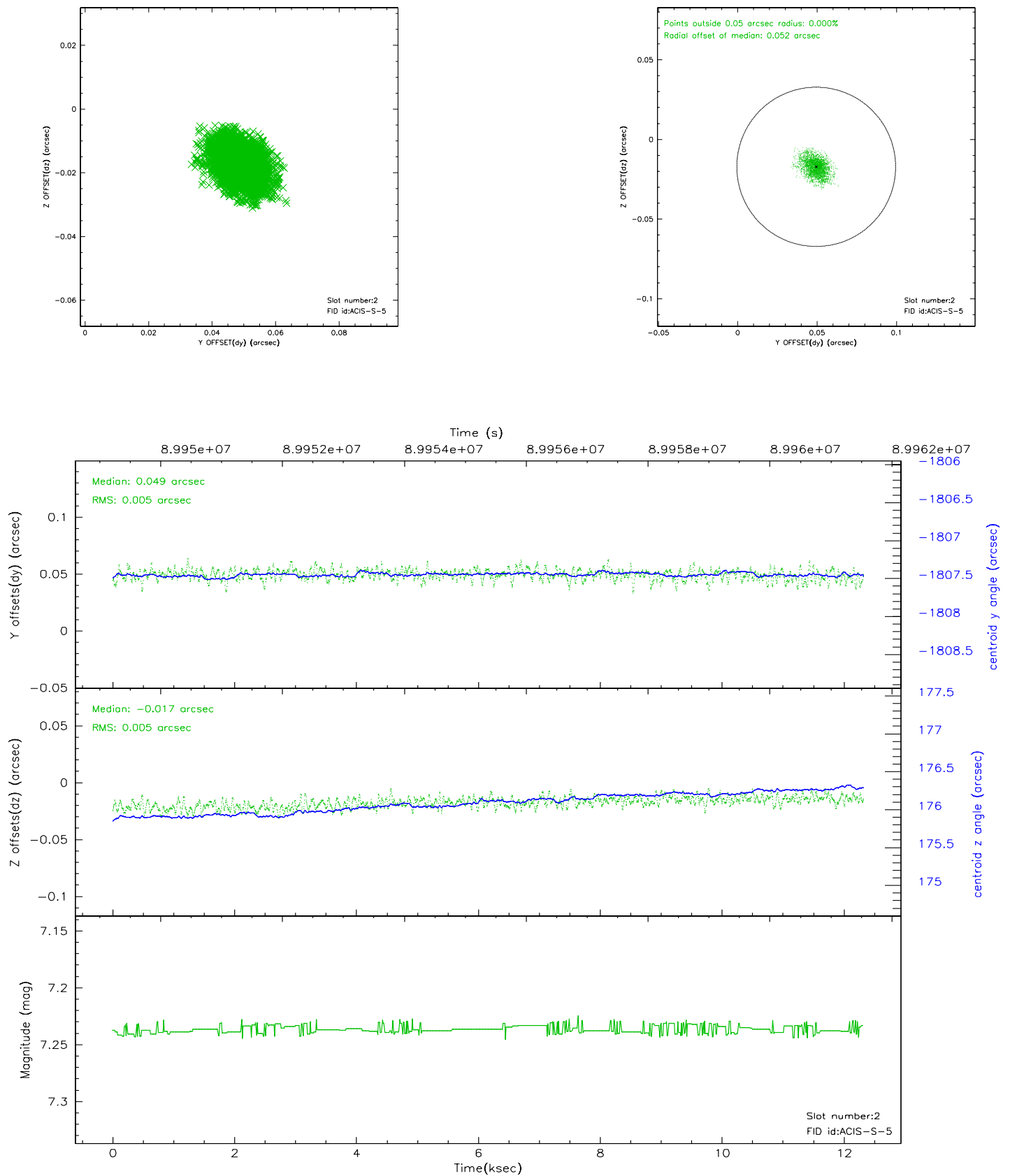
### 2.5.1 Slot 0



## 2.5.2 Slot 1

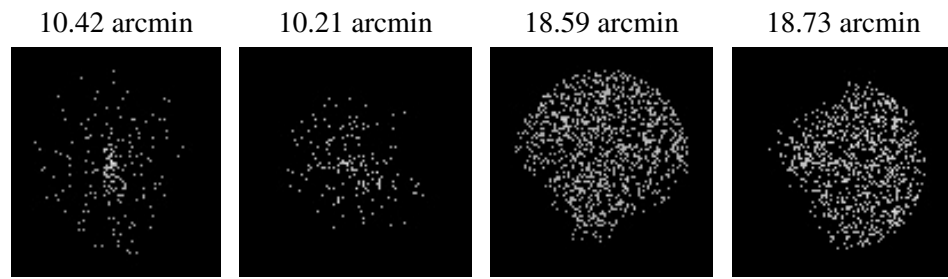


### 2.5.3 Slot 2





### 3 Point Sources



## A Summary

### A.1 Status

V&V Scientist	Jen Lauer
V&V Date (YYYY-MM-DD)	2007.06.14
V&V Edition	1
V&V Disposition and Status	OK
V&V Charge Time	11.92

### A.2 Comments