

V&V Reference Report

L2 ASCDS Version : 7.6.9

Observation 2246 - L2 Version 001
Chandra X-Ray Center

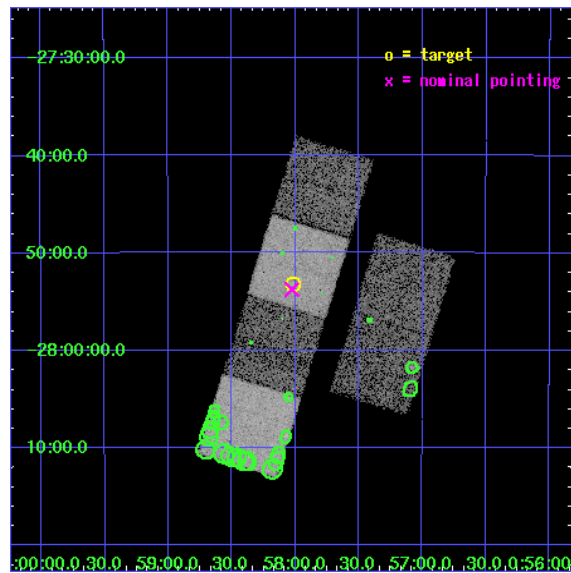
L2 Processing Date : Nov 2 2006

Contents

1	Front	2
2	OBI	3
2.1	OBI	3
2.1.1	Images	3
2.1.2	Bias	3
2.1.3	Parameters	4
2.1.4	Events	4
2.2	Compared Parameters	5
2.3	Aspect	6
2.4	Star Slots	9
2.4.1	Slot 0	9
2.4.2	Slot 1	10
2.4.3	Slot 2	11
2.4.4	Slot 6	12
2.4.5	Slot 7	13
2.5	FID Slots	14
2.5.1	Slot 3	14
2.5.2	Slot 4	15
2.5.3	Slot 5	16
3	Point Sources	17
A	Summary	18
A.1	Status	18
A.2	Comments	18

1 Front

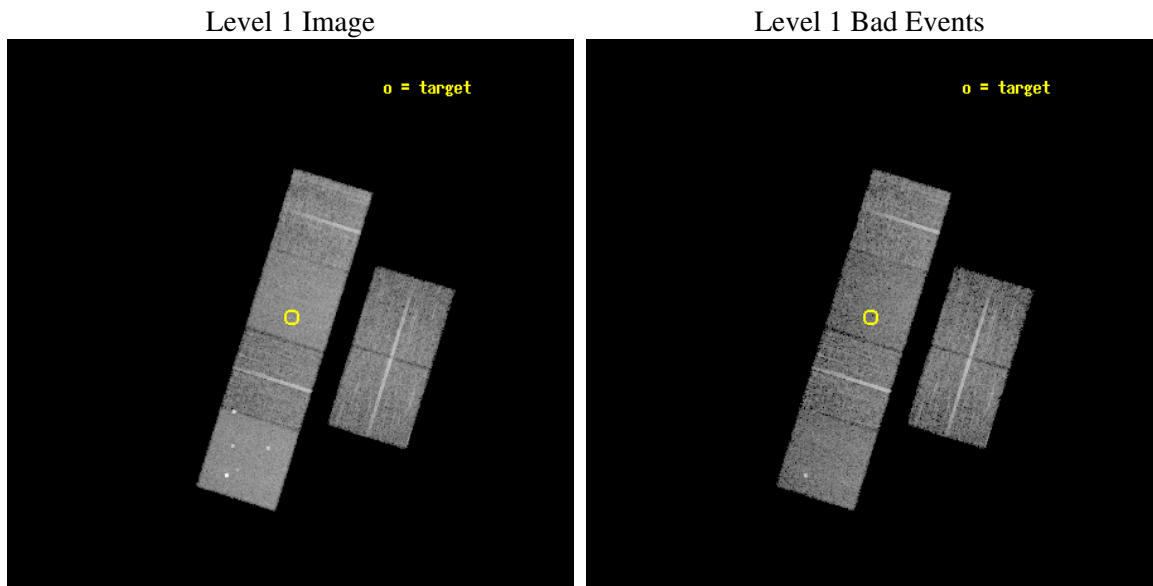
seq_num	900073
obs_id	2246
title	THE NATURE OF NARROW-LINE, FIR-LUMINOUS, X-RAY GALAXIES
observer	PROFESSOR TOM SHANKS
object	GSGP4X:091
dtcycle	0
cycle	P
ra_targ	14.505417
dec_targ	-27.886389
ra_nom	14.506748554415
dec_nom	-27.896141031757
roll_nom	287.28892298626
revision	2
ontime	9452.8000088036
livetime	9333.1029632993
ontime2	9452.8000088036
ontime3	9449.5590485781
ontime5	9452.8000088036
ontime6	9449.5590485632
ontime7	9452.8000088036
ontime8	9452.8000088036
l2events	92093



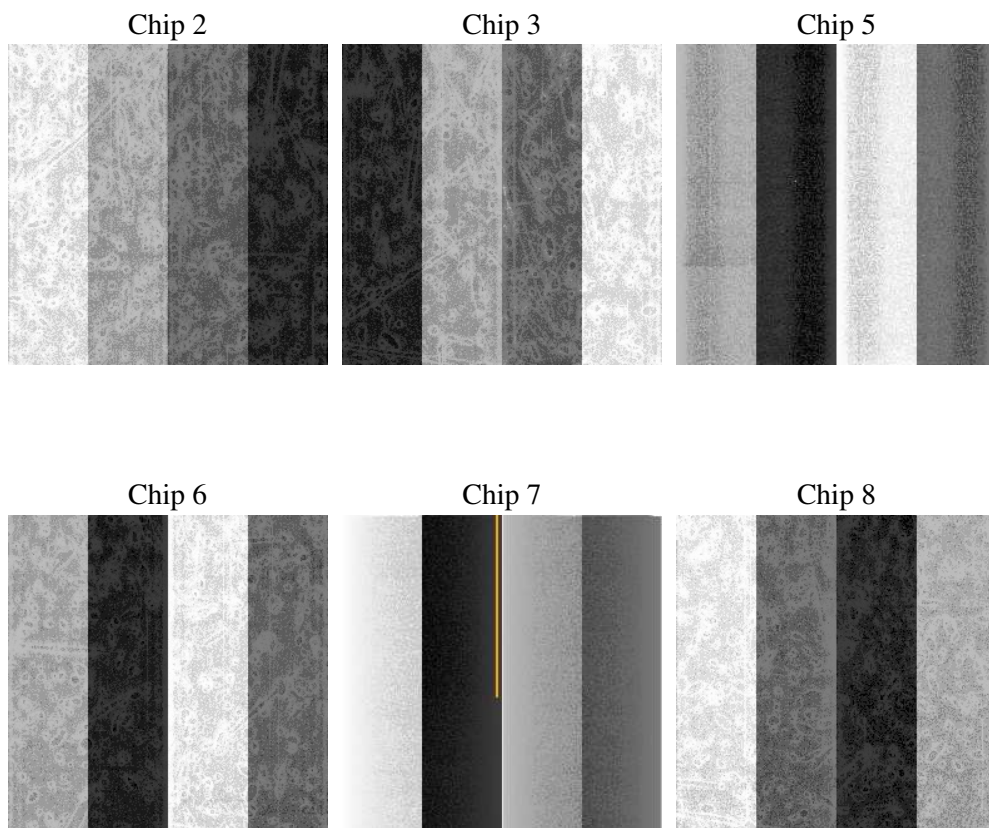
2 OBI

2.1 OBI

2.1.1 Images



2.1.2 Bias



2.1.3 Parameters

obi_num	1
ascdsver	7.6.9
caldbver	3.2.3
date	2006-11-02T20:29:50
revision	2

sched_exp_time	9500.000000
ontime	9457.2298032343
ontime2	9457.2298032343
ontime3	9453.9888430089
ontime5	9457.2298032343
ontime6	9453.988842994
ontime7	9457.2298032343
ontime8	9457.2298032343
l1events	410654

2.1.4 Events

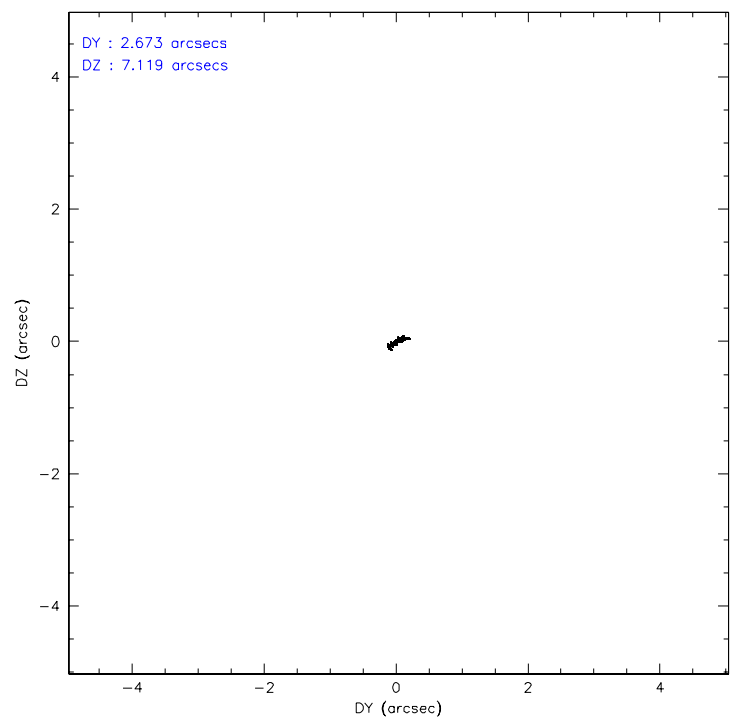
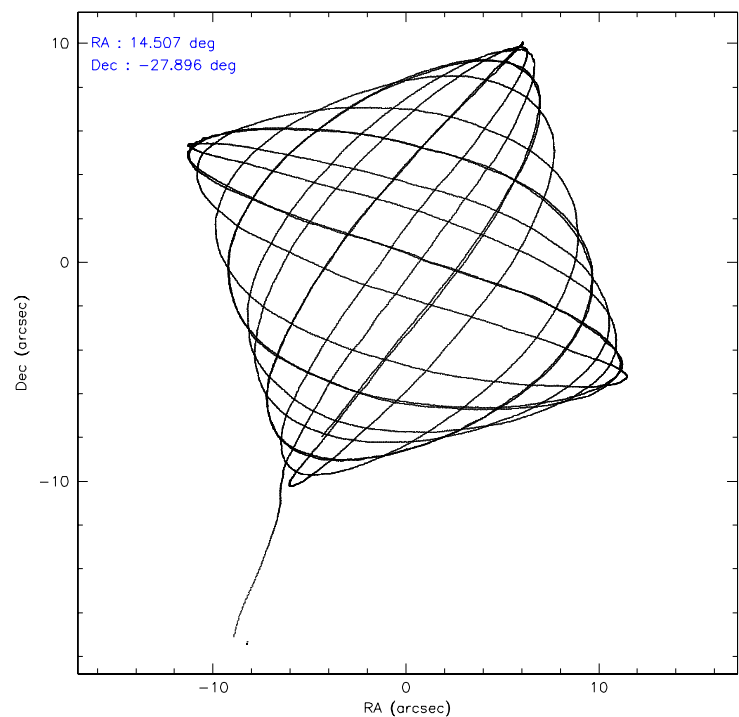
	ccd 2	ccd 3	ccd 5	ccd 6	ccd 7	ccd 8
level 1 events	60648	56251	85327	58525	76180	73723
rejected events	53423	49042	45497	51006	44933	58303
rejected %	88%	87%	53%	87%	58%	79%

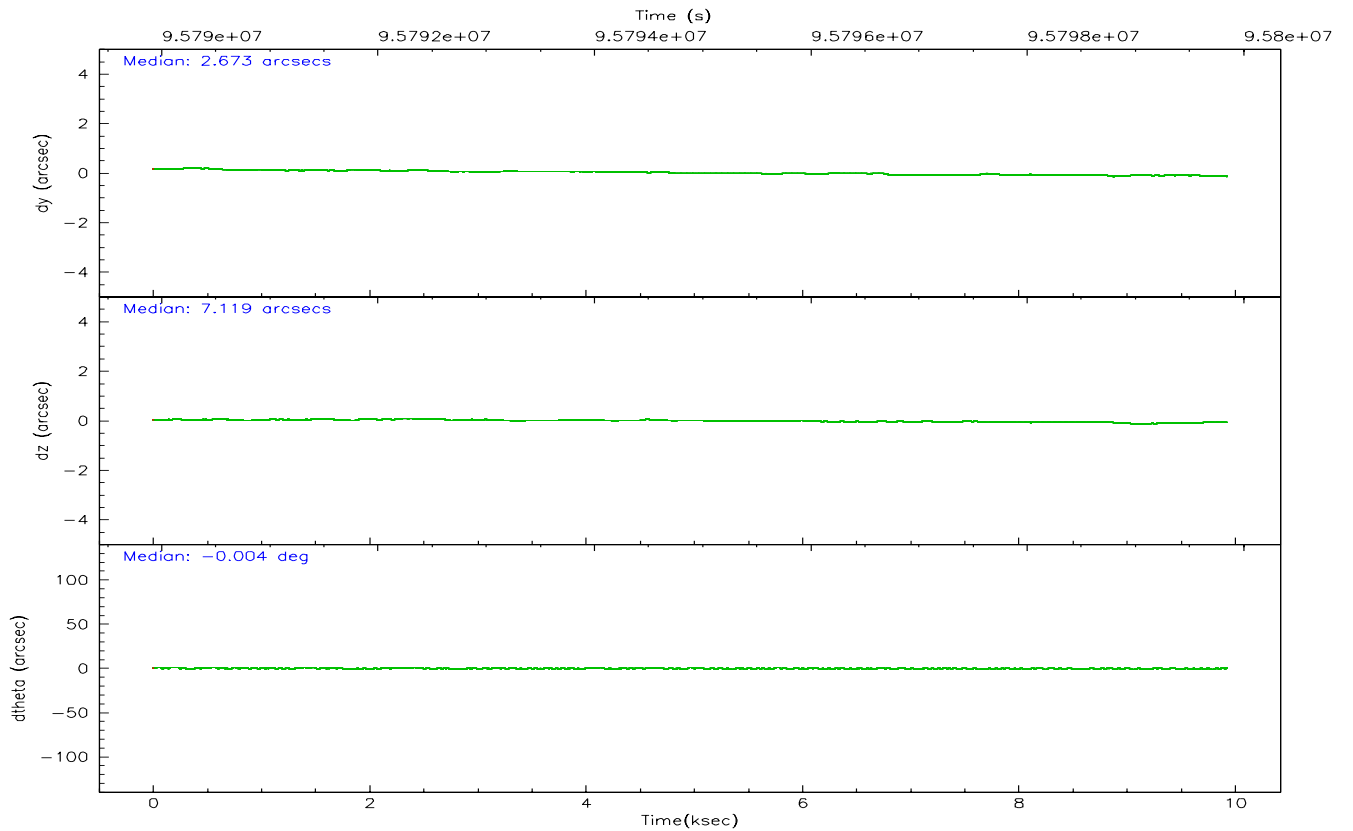
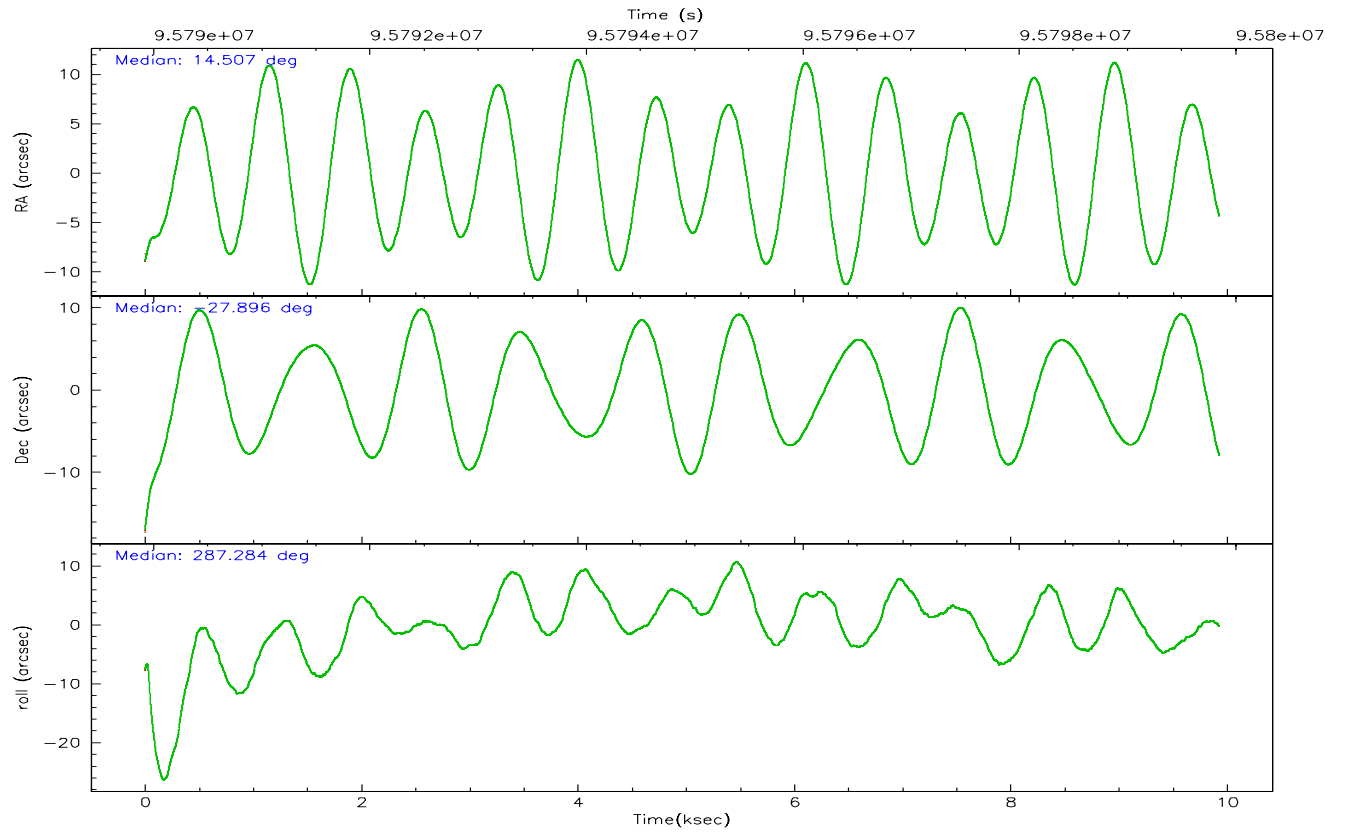
	ccd 2	ccd 3	ccd 5	ccd 6	ccd 7	ccd 8
grade 0 events	3218	3165	4517	3288	2351	5464
	5%	5%	5%	5%	3%	7%
grade 1 events	28	28	327	23	50	53
	0%	0%	0%	0%	0%	0%
grade 2 events	1558	1508	12601	1568	7406	3189
	2%	2%	14%	2%	9%	4%
grade 3 events	602	659	1039	667	1744	1716
	0%	1%	1%	1%	2%	2%
grade 4 events	620	609	948	647	1736	1593
	1%	1%	1%	1%	2%	2%
grade 5 events	1980	2156	3979	2520	5024	3046
	3%	3%	4%	4%	6%	4%
grade 6 events	1229	1269	20732	1350	18018	3467
	2%	2%	24%	2%	23%	4%
grade 7 events	51413	46857	41184	48462	39851	55195
	84%	83%	48%	82%	52%	74%

2.2 Compared Parameters

Parameter	Planned	Actual	Parameter	Planned	Actual
Instrument	ACIS	ACIS	Obspar format version number	6	6
Detector	ACIS-235678	ACIS-235678	Obspar file type	PREDICTED	ACTUAL
Grating	NONE	NONE	Obspar update status	NONE	UPDATED
Data mode	FAINT	FAINT	Number of optional ACIS chips dropped	0	0
Observation mode	POINTING	POINTING	On-chip summing requested	N	N
Pointing RA	14.483875	14.50674855441548	Subarray requested	NONE	NONE
Pointing Dec	-27.877785	-27.89614103175681	Alternating exposures requested	N	N
Pointing Roll	287.121586	287.2889229862564	Primary exposure time	0.000000	3.2
SIM focus pos (mm)	-0.684267	-0.6828225247311905			
SIM defocus (mm)	0	0.001444936568705701			
SIM translation stage pos (mm)	-190.132523	-190.1425803651734			
SIM translation stage offset (mm)	0	0.01005778216563158			
Observation start time	95790344.184000	95789266.81826			
Observation start date	2001-01-13T16:24:40	2001-01-13T16:07:46			
Observation end time	95799844.184000	95800653.031197			
Observation end date	2001-01-13T19:03:00	2001-01-13T19:17:33			
Read mode	TIMED	TIMED			

2.3 Aspect



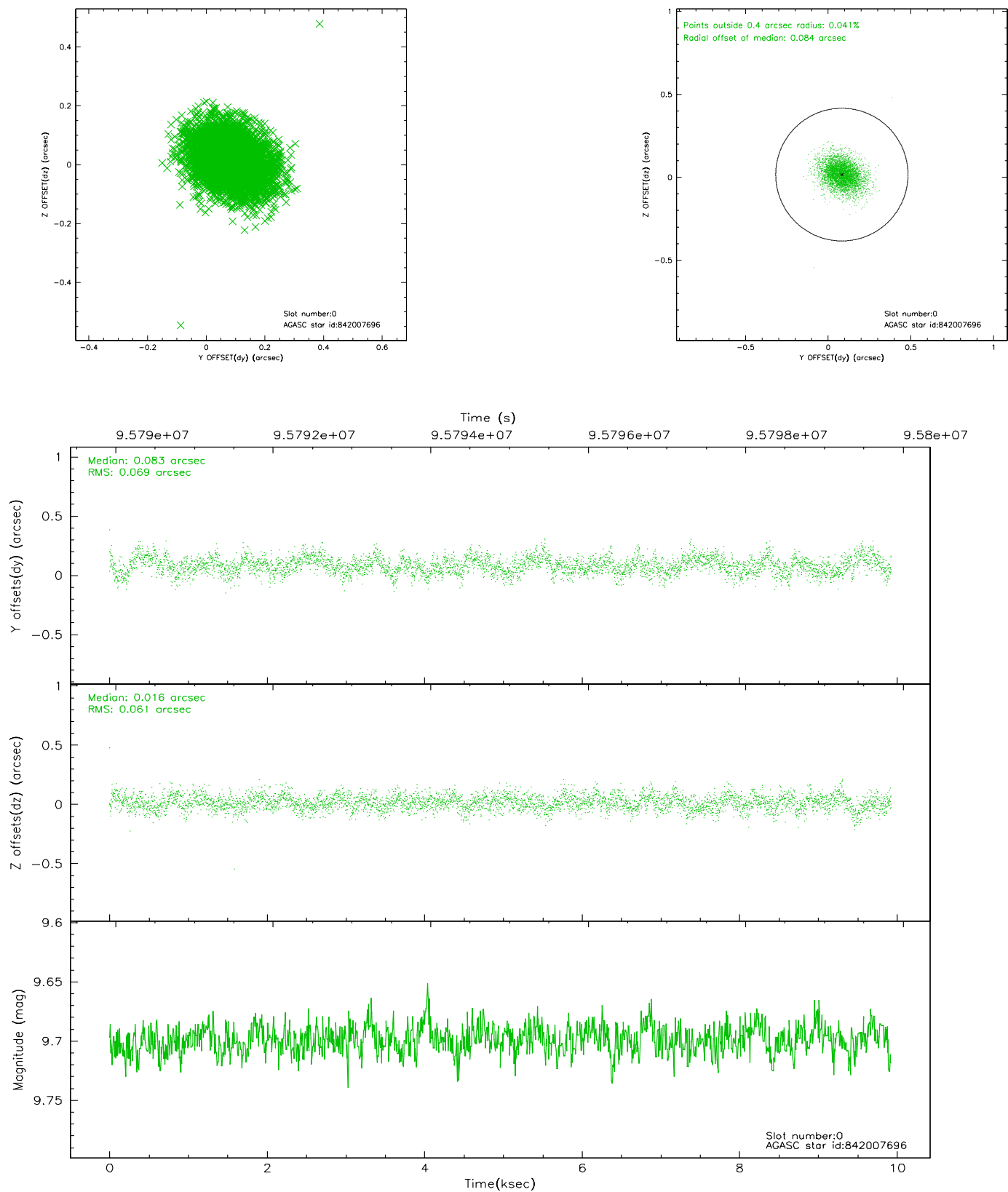


Slot Statistics

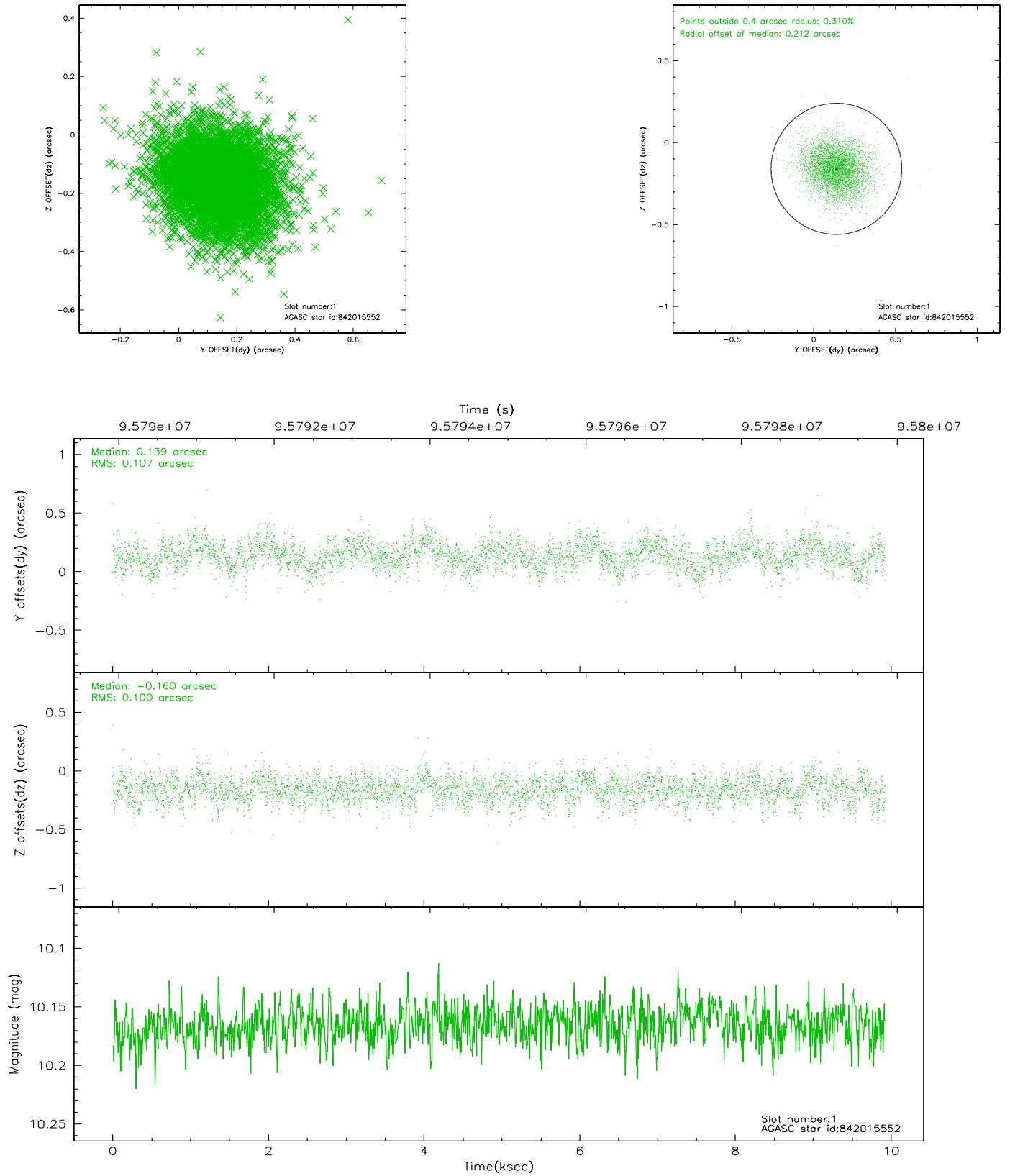
slot	status	id	mag	n_pts	med_dy	med_dz	dr1	dr2	ra	dec	mean_y	mean_z
0	GUIDE	842007696	9.70	4842	0.083	0.016	0.096	0.162	14.456243	-28.218698	1147.05	-445.67
1	GUIDE	842015552	10.16	4836	0.139	-0.160	0.156	0.254	14.109474	-28.656091	2331.69	-1956.60
2	GUIDE	842008736	10.37	4843	-0.089	0.149	0.175	0.281	14.870220	-27.799337	94.26	1257.47
3	FID	ACIS-S-2	7.11	2418	0.001	0.025	0.007	0.012	0.000000	0.000000	-755.33	-1728.20
4	FID	ACIS-S-4	7.20	2418	-0.067	-0.007	0.005	0.011	0.000000	0.000000	2157.64	179.68
5	FID	ACIS-S-5	7.23	2417	0.035	-0.009	0.007	0.013	0.000000	0.000000	-1807.44	173.98
6	GUIDE	842017400	8.69	4842	-0.023	0.115	0.068	0.112	14.466062	-28.061705	615.94	-249.23
7	GUIDE	842015088	9.30	4839	-0.112	-0.118	0.082	0.133	13.933025	-27.893682	-457.53	-1693.88

2.4 Star Slots

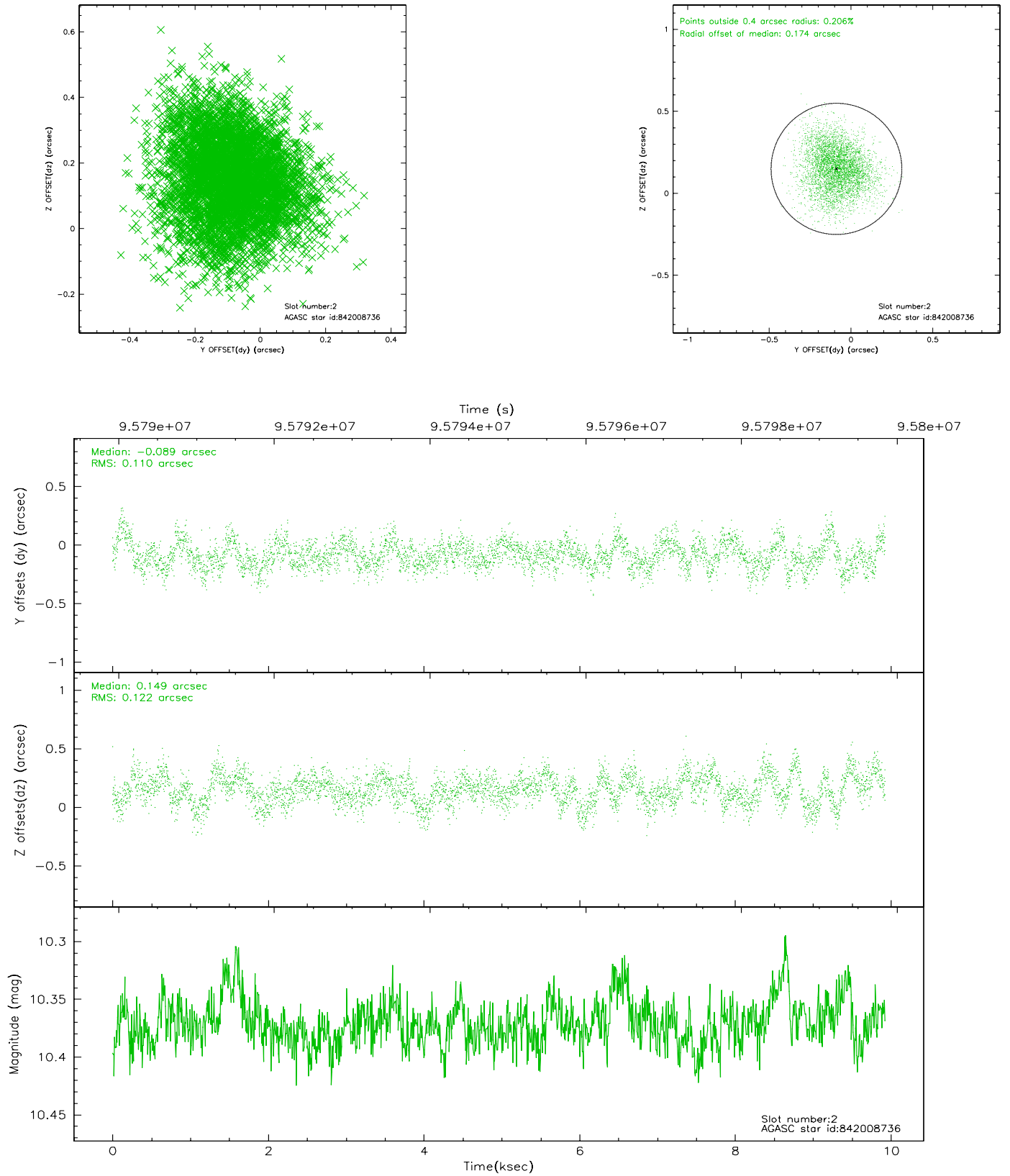
2.4.1 Slot 0



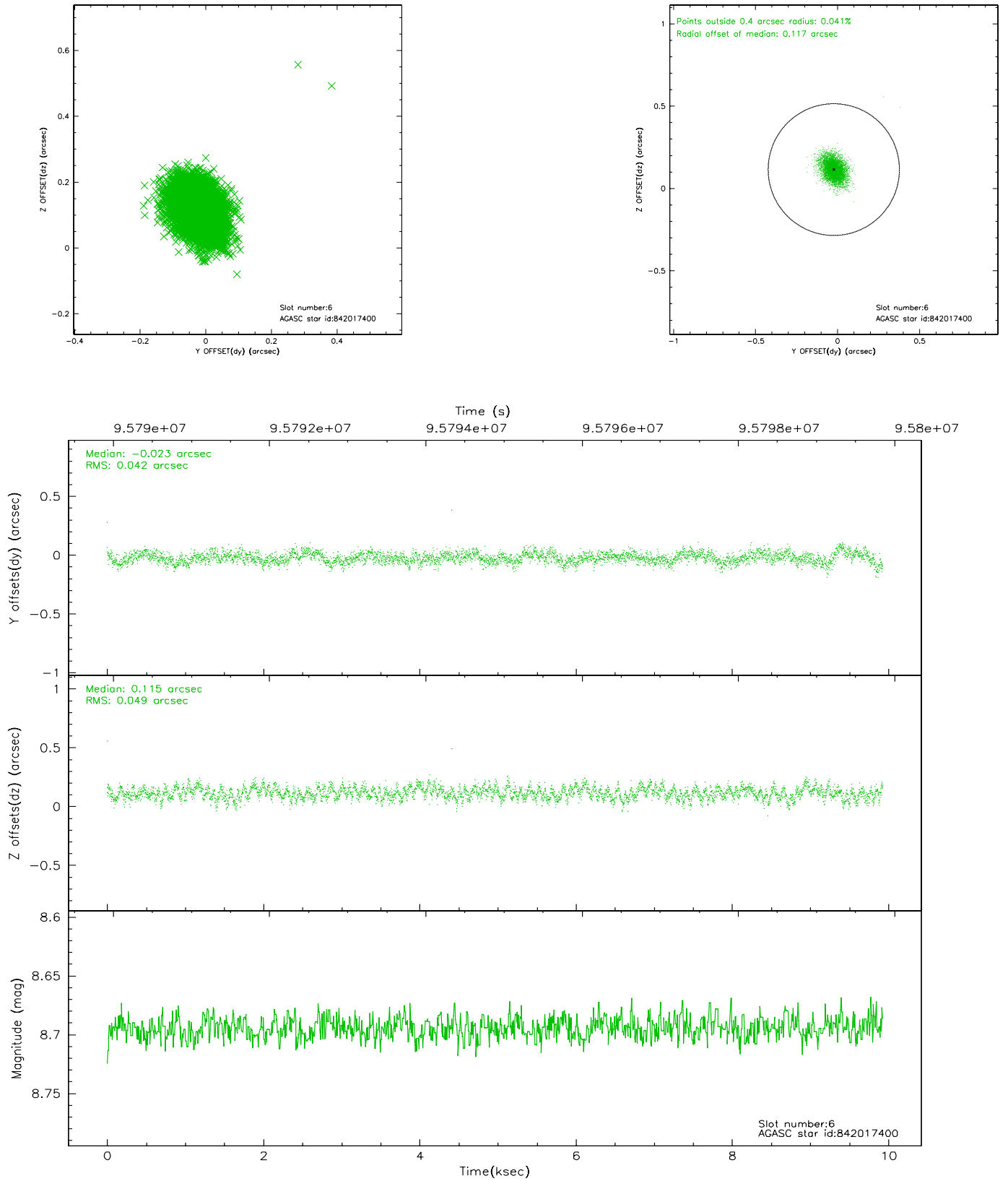
2.4.2 Slot 1



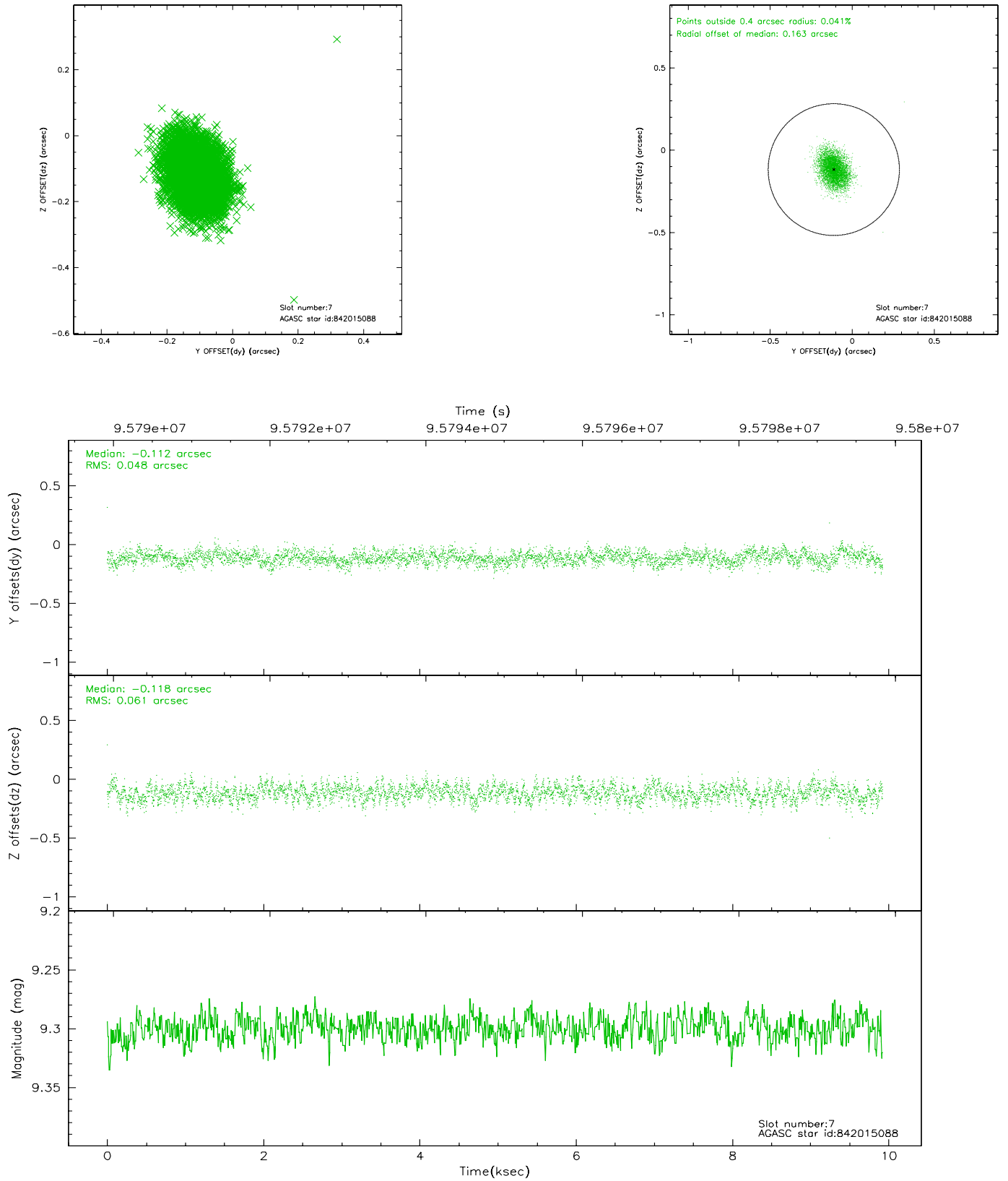
2.4.3 Slot 2



2.4.4 Slot 6

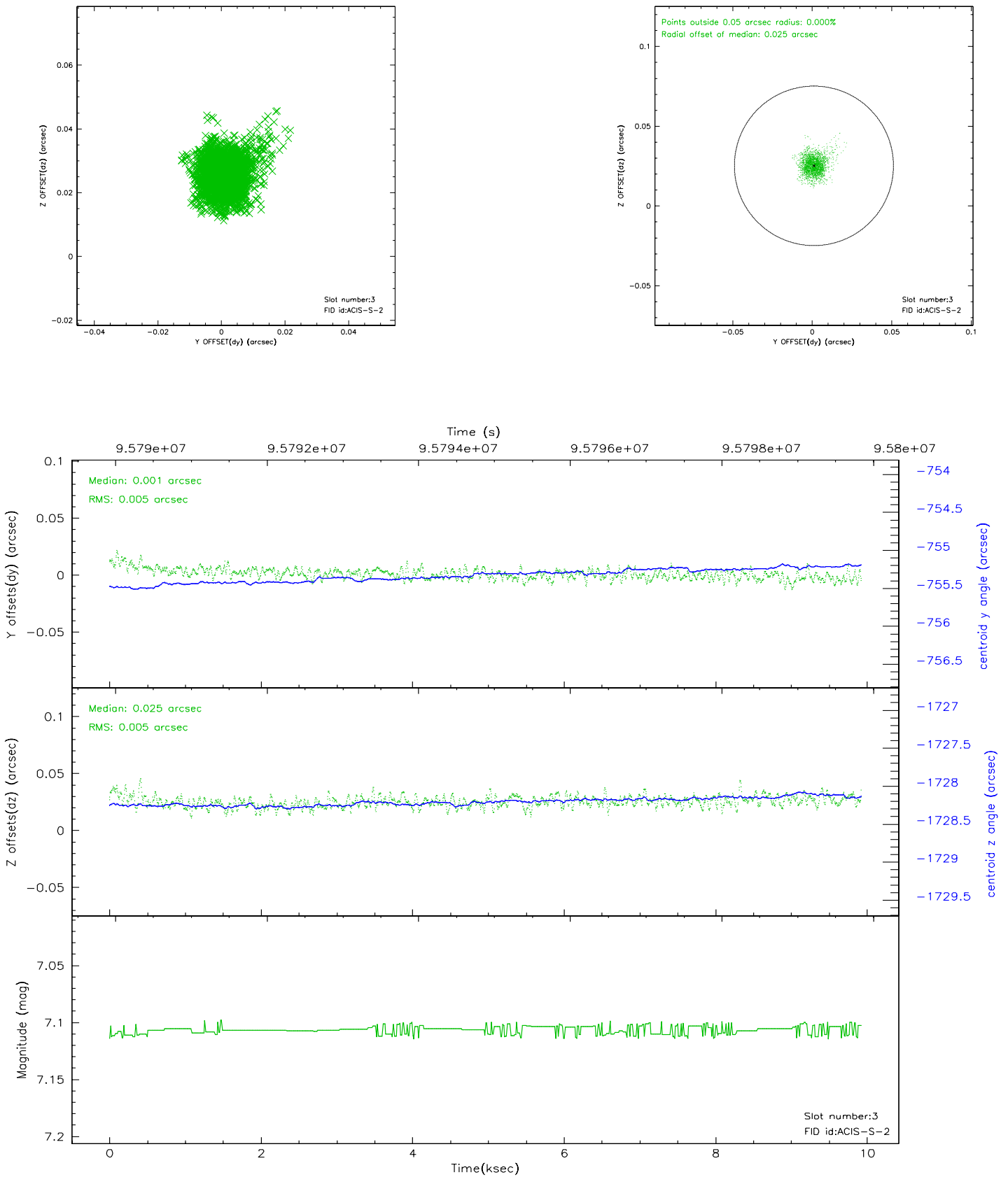


2.4.5 Slot 7

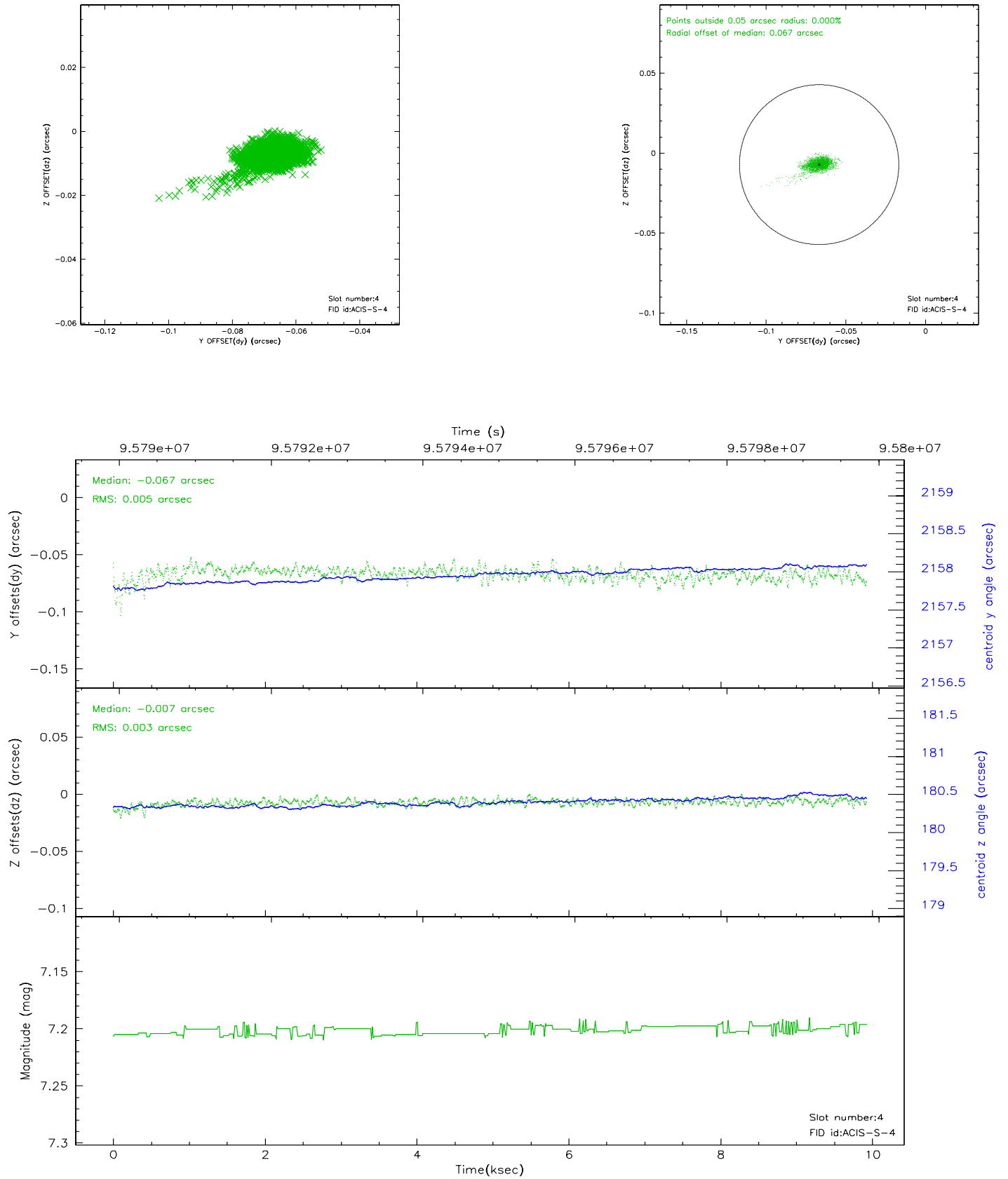


2.5 FID Slots

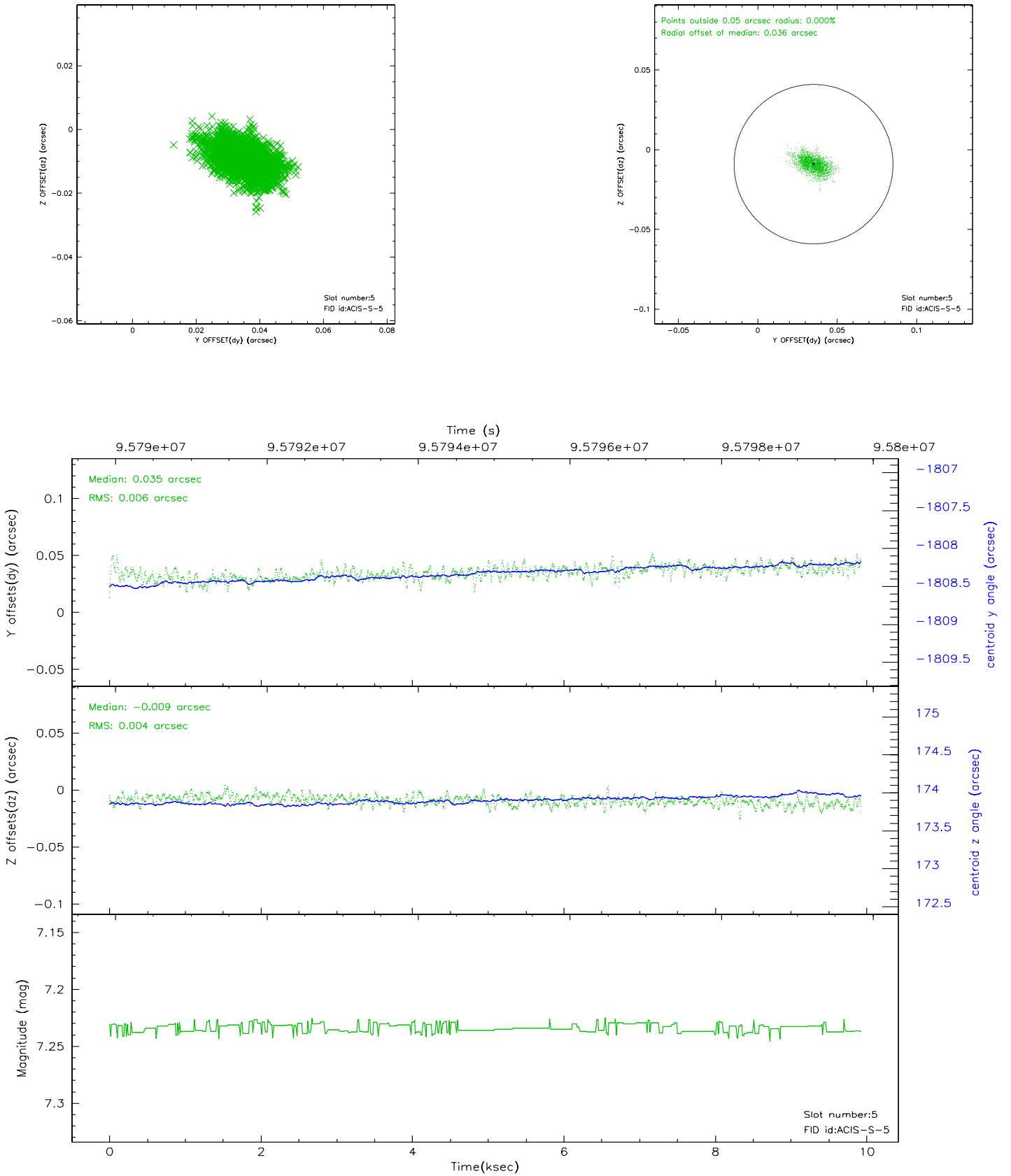
2.5.1 Slot 3



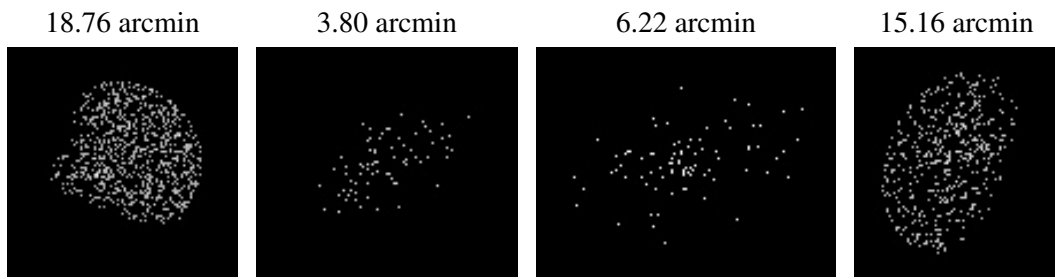
2.5.2 Slot 4



2.5.3 Slot 5



3 Point Sources



A Summary

A.1 Status

V&V Scientist	Jen Lauer
V&V Date (YYYY-MM-DD)	2006.11.06
V&V Edition	1
V&V Disposition and Status	OK
V&V Charge Time	9.455

A.2 Comments