

V&V Reference Report

L2 ASCDS Version : 7.6.10

Observation 2245 - L2 Version 001
Chandra X-Ray Center

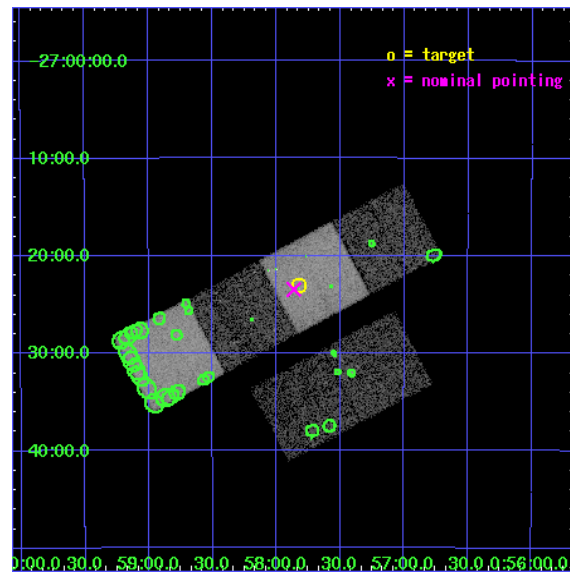
L2 Processing Date : Jun 14 2007

Contents

1	Front	2
2	OBI	3
2.1	OBI	3
2.1.1	Images	3
2.1.2	Bias	3
2.1.3	Parameters	4
2.1.4	Events	4
2.2	Compared Parameters	5
2.3	Aspect	6
2.4	Star Slots	9
2.4.1	Slot 3	9
2.4.2	Slot 4	10
2.4.3	Slot 5	11
2.4.4	Slot 6	12
2.4.5	Slot 7	13
2.5	FID Slots	14
2.5.1	Slot 0	14
2.5.2	Slot 1	15
2.5.3	Slot 2	16
3	Point Sources	17
A	Summary	18
A.1	Status	18
A.2	Comments	18

1 Front

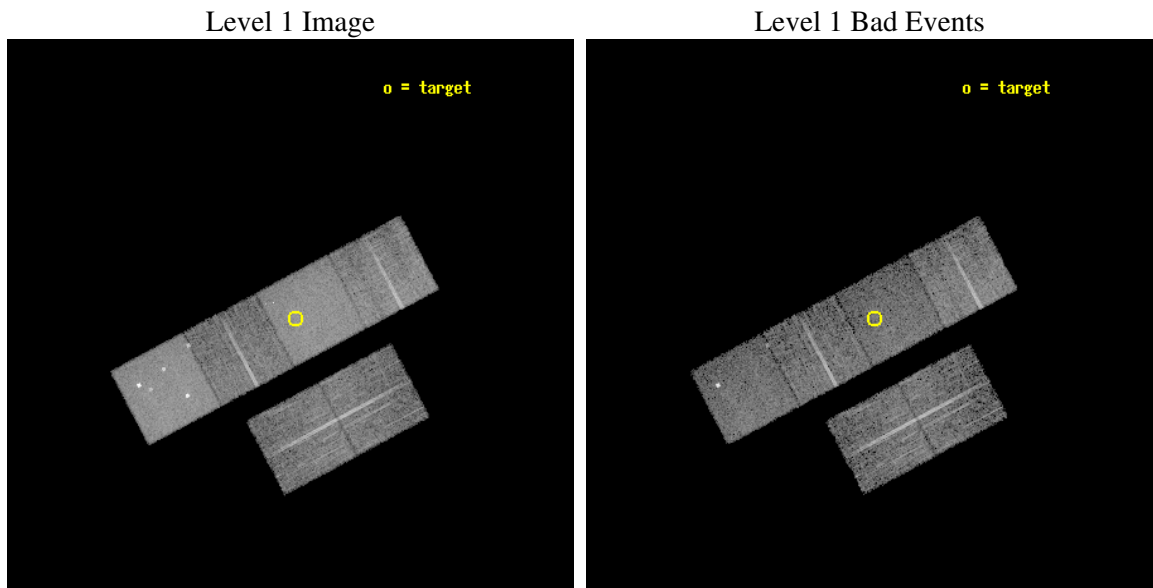
seq_num	900072
obs_id	2245
title	THE NATURE OF NARROW-LINE, FIR-LUMINOUS, X-RAY GALAXIES
observer	PROFESSOR TOM SHANKS
object	GSGP4X:082
dtcycle	0
cycle	P
ra_targ	14.457083
dec_targ	-27.385
ra_nom	14.465826232498
dec_nom	-27.391085686111
roll_nom	332.00509821062
revision	2
ontime	8960.0000083447
livetime	8846.5430931747
ontime2	8960.0000083447
ontime3	8960.0000083447
ontime5	8960.0000083447
ontime6	8960.0000083447
ontime7	8960.0000083447
ontime8	8960.0000083447
l2events	113477



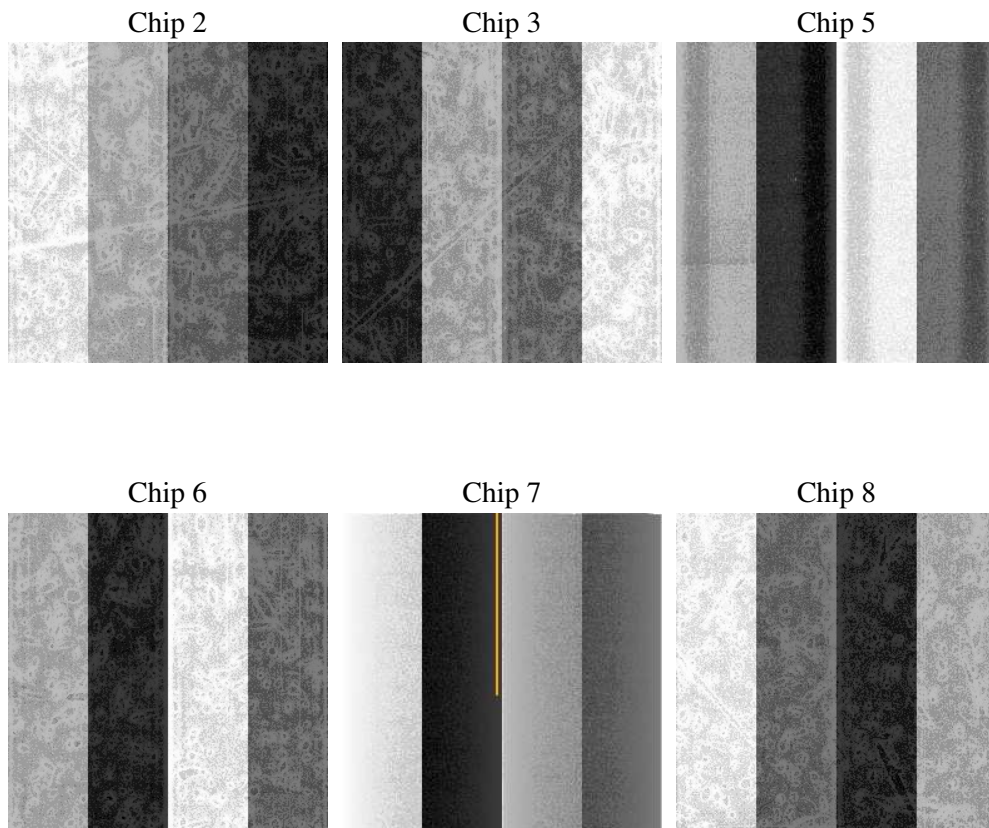
2 OBI

2.1 OBI

2.1.1 Images



2.1.2 Bias



2.1.3 Parameters

obi_num	0
ascdsver	7.6.10
caldbver	3.4.0
date	2007-06-14T07:50:25
revision	2

sched_exp_time	9200.000000
ontime	8960.0000083447
ontime2	8960.0000083447
ontime3	8960.0000083447
ontime5	8960.0000083447
ontime6	8960.0000083447
ontime7	8960.0000083447
ontime8	8960.0000083447
l1events	408083

2.1.4 Events

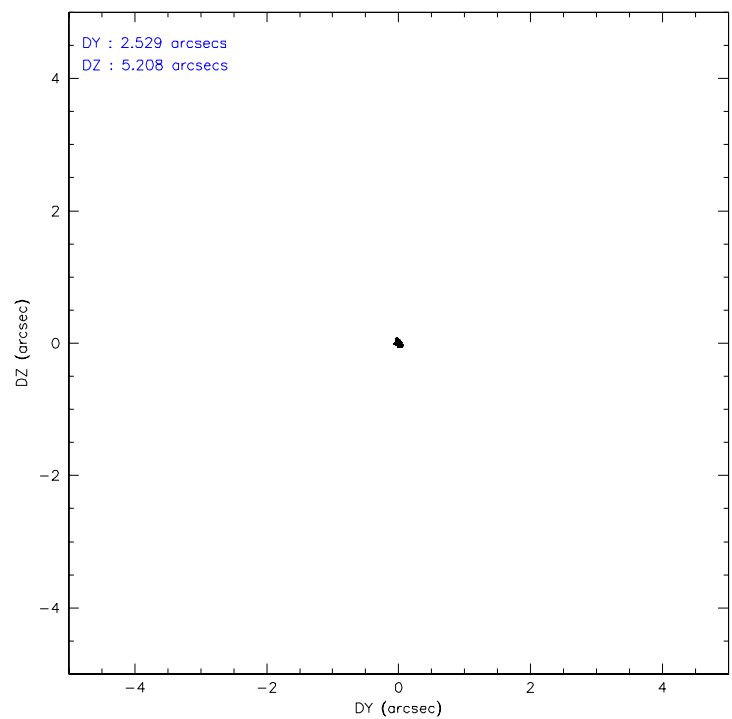
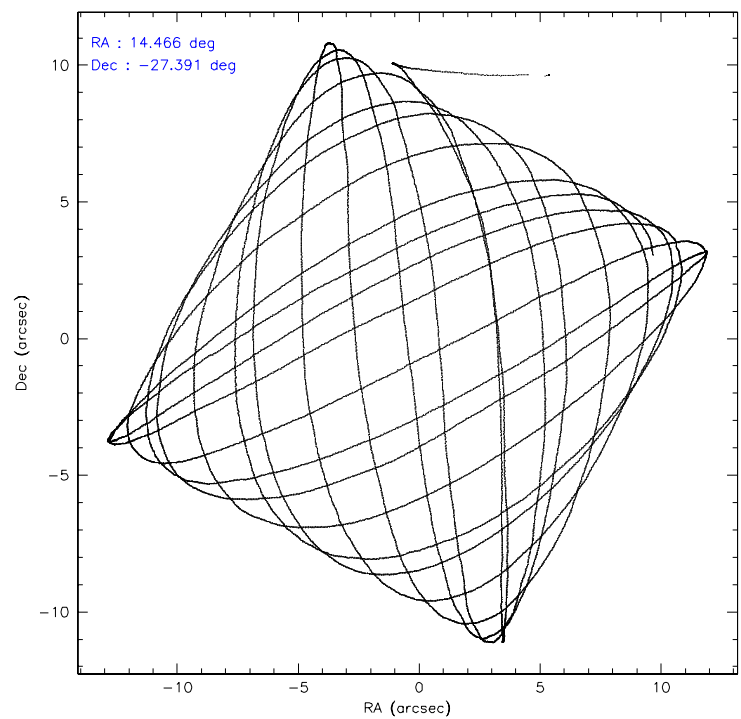
	ccd 2	ccd 3	ccd 5	ccd 6	ccd 7	ccd 8
level 1 events	54319	51185	93646	53060	84239	71634
rejected events	48476	45104	41481	46084	39289	57852
rejected %	89%	88%	44%	86%	46%	80%

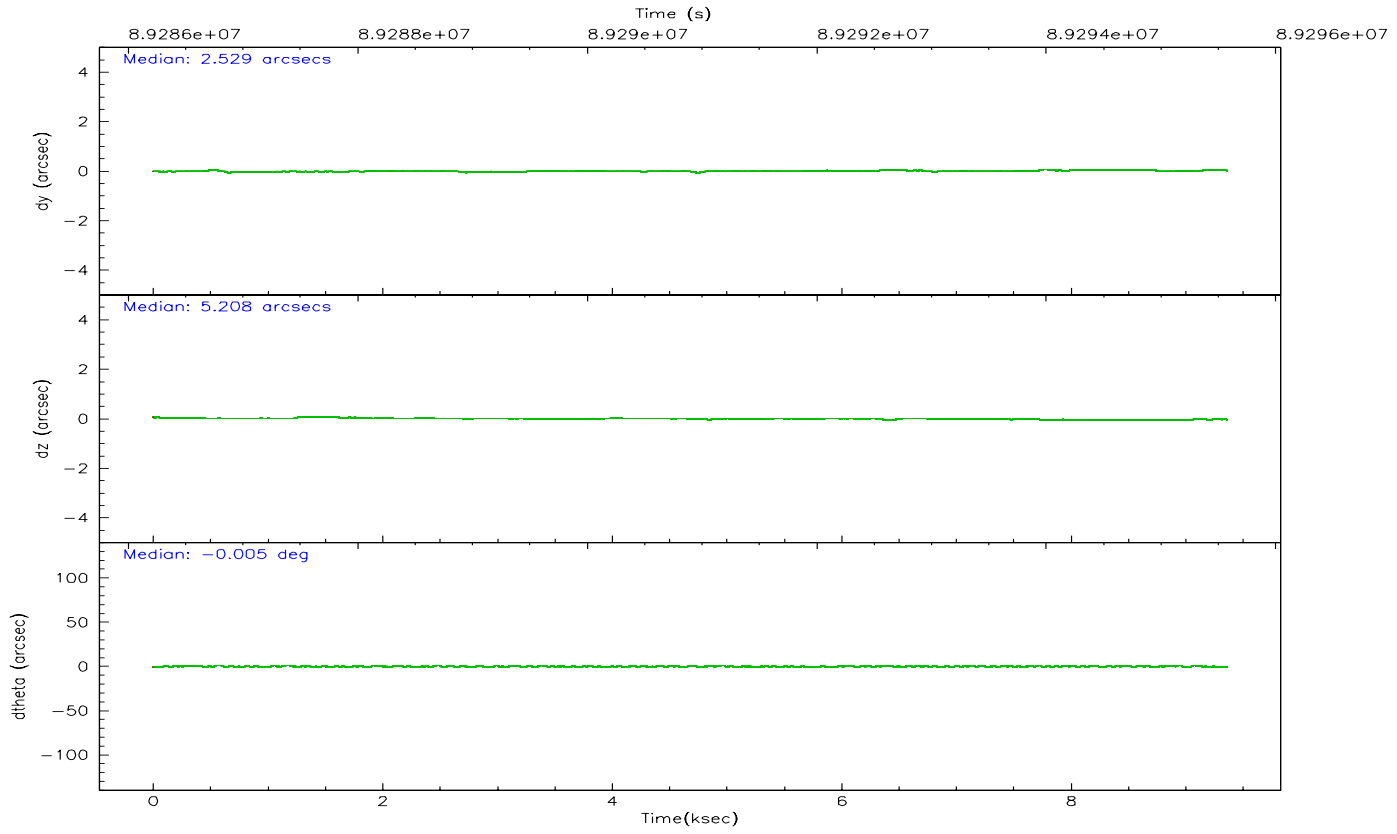
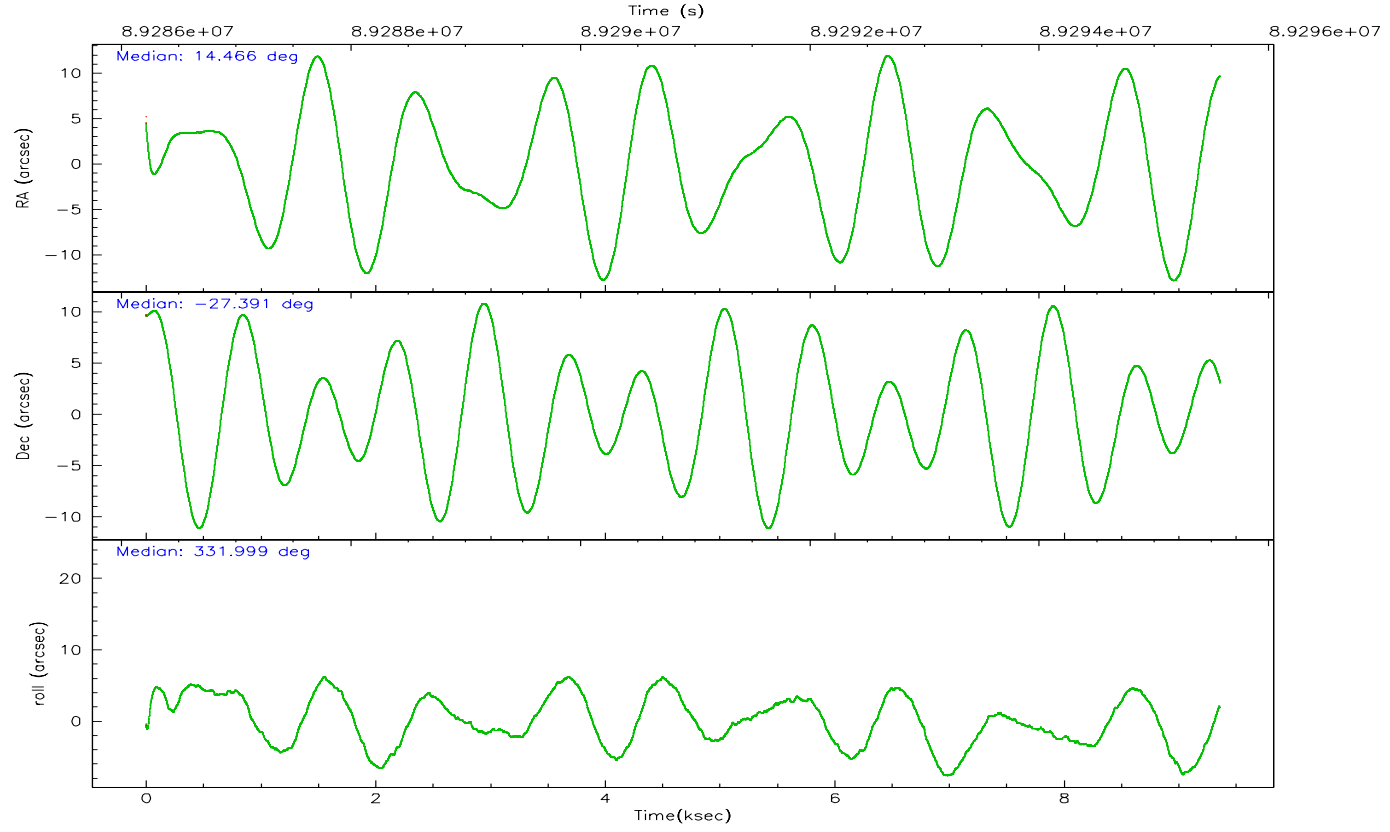
	ccd 2	ccd 3	ccd 5	ccd 6	ccd 7	ccd 8
grade 0 events	2507	2756	9324	3228	5286	4455
	4%	5%	9%	6%	6%	6%
grade 1 events	22	21	186	26	61	42
	0%	0%	0%	0%	0%	0%
grade 2 events	1237	1160	14719	1321	8627	2986
	2%	2%	15%	2%	10%	4%
grade 3 events	539	551	2592	623	3874	1460
	0%	1%	2%	1%	4%	2%
grade 4 events	529	601	2541	587	3945	1351
	0%	1%	2%	1%	4%	1%
grade 5 events	1729	1918	6296	2148	6506	2690
	3%	3%	6%	4%	7%	3%
grade 6 events	1033	1015	23022	1220	23254	3532
	1%	1%	24%	2%	27%	4%
grade 7 events	46723	43163	34966	43907	32686	55118
	86%	84%	37%	82%	38%	76%

2.2 Compared Parameters

Parameter	Planned	Actual	Parameter	Planned	Actual
Instrument	ACIS	ACIS	Obspar format version number	6	6
Detector	ACIS-235678	ACIS-235678	Obspar file type	PREDICTED	ACTUAL
Grating	NONE	NONE	Obspar update status	NONE	UPDATED
Data mode	FAINT	FAINT	Number of optional ACIS chips dropped	0	0
Observation mode	POINTING	POINTING	On-chip summing requested	N	N
Pointing RA	14.435024	14.46582623249804	Subarray requested	NONE	NONE
Pointing Dec	-27.392286	-27.39108568611067	Alternating exposures requested	N	N
Pointing Roll	331.834302	332.005098210615	Primary exposure time	0.000000	3.2
SIM focus pos (mm)	-0.684267	-0.6828225247311905			
SIM defocus (mm)	0	0.001444936568705701			
SIM translation stage pos (mm)	-190.132523	-190.1400660498719			
SIM translation stage offset (mm)	0	0.00754346686406393			
Observation start time	89286375.184000	89285168.019999			
Observation start date	2000-10-30T09:45:11	2000-10-30T09:26:08			
Observation end time	89295575.184000	89295709.120397			
Observation end date	2000-10-30T12:18:31	2000-10-30T12:21:49			
Read mode	TIMED	TIMED			

2.3 Aspect



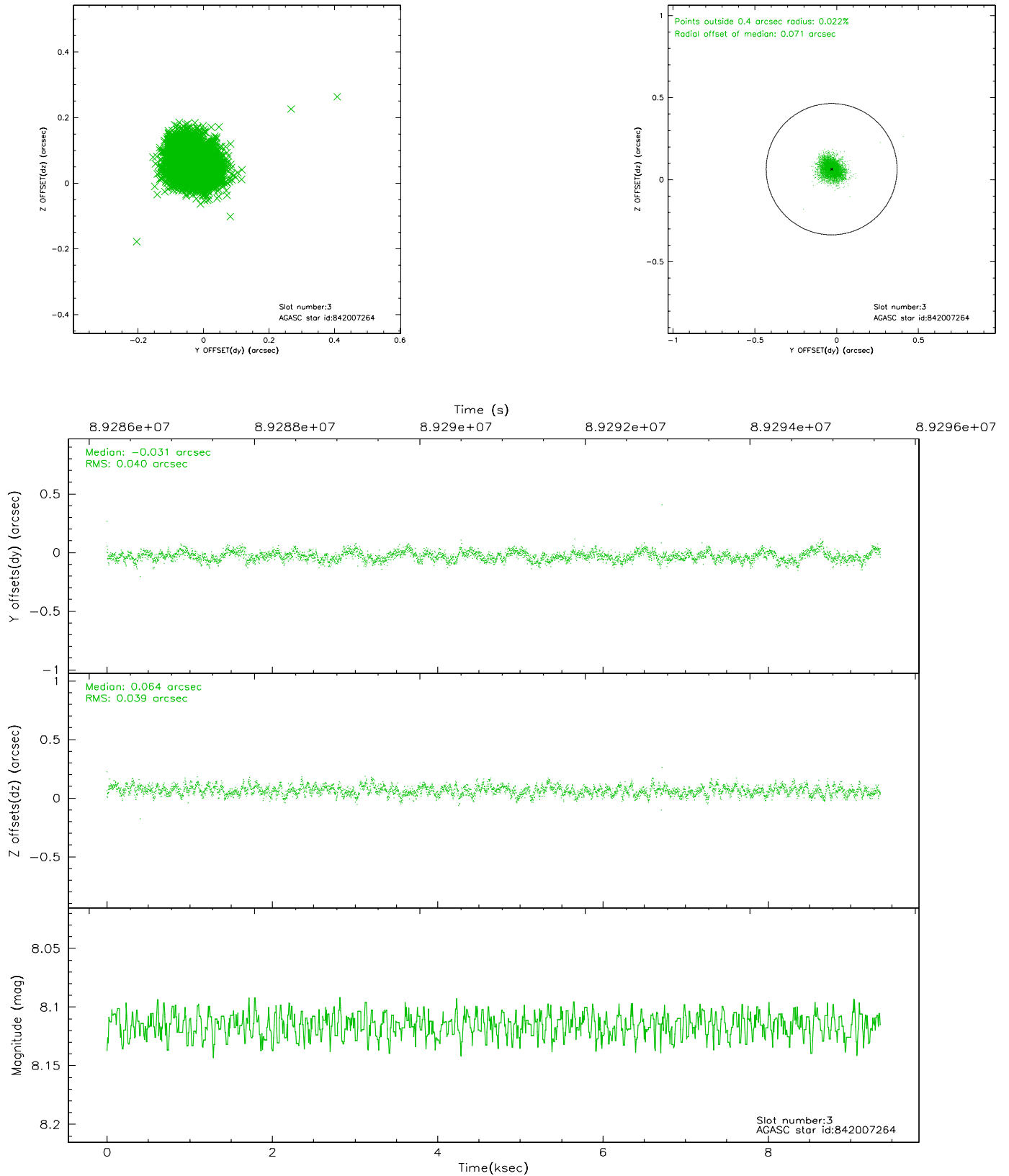


Slot Statistics

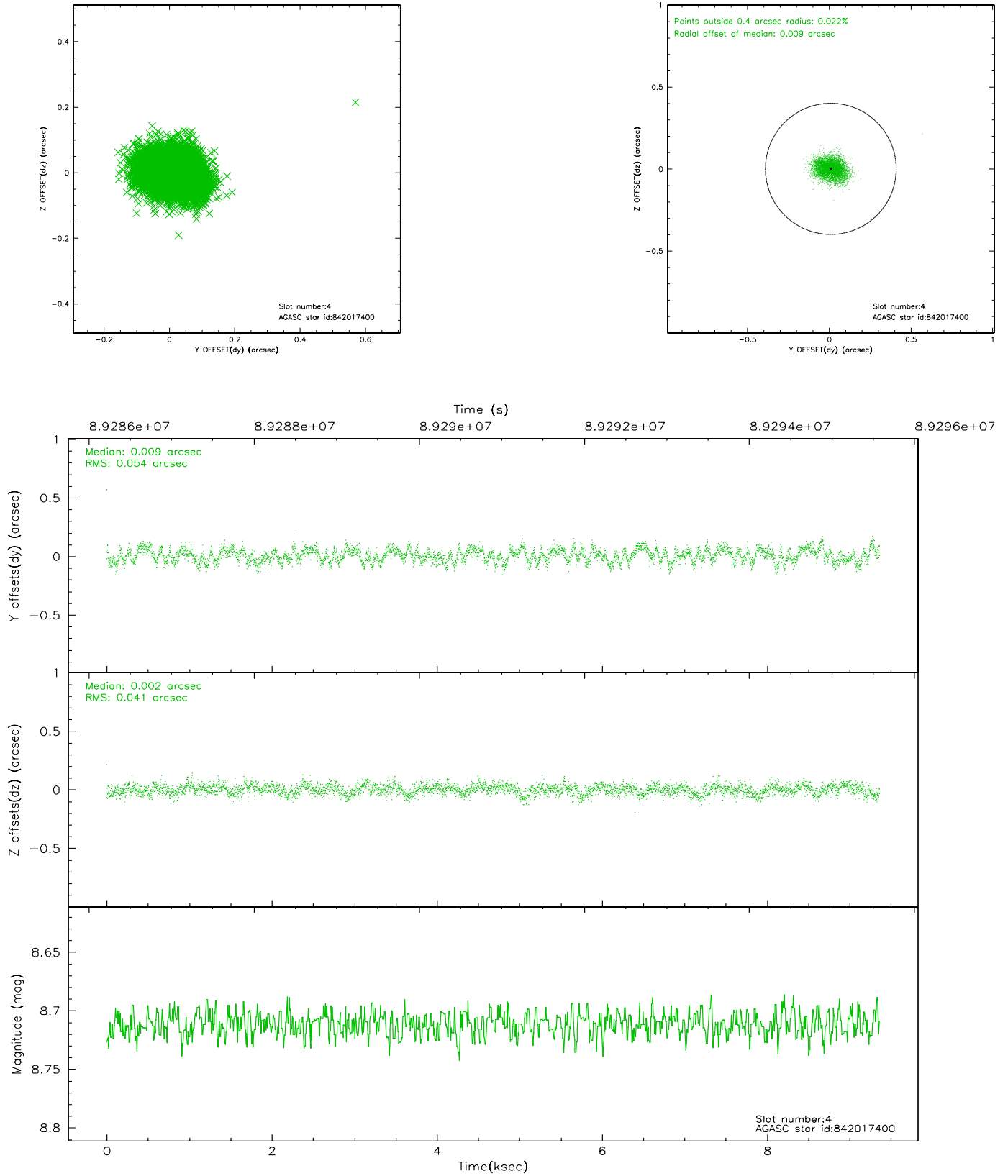
slot	status	id	mag	n_pts	med_dy	med_dz	dr1	dr2	ra	dec	mean_y	mean_z
0	FID	ACIS-S-2	7.11	2284	-0.007	-0.000	0.003	0.007	0.000000	0.000000	-755.14	-1726.34
1	FID	ACIS-S-4	7.21	2284	-0.014	0.004	0.003	0.007	0.000000	0.000000	2157.84	181.60
2	BAD	ACIS-S-5	7.24	333	0.059	-0.038	0.013	0.022	0.000000	0.000000	-1801.64	176.26
3	GUIDE	842007264	8.12	4568	-0.031	0.064	0.059	0.094	14.570692	-27.092422	-125.21	1156.80
4	GUIDE	842017400	8.71	4567	0.009	0.002	0.073	0.114	14.466062	-28.061705	1225.73	-2077.62
5	GUIDE	842015088	9.30	4568	-0.042	0.020	0.110	0.187	13.933025	-27.893682	-553.09	-2348.59
6	GUIDE	842008736	10.39	4563	0.124	-0.034	0.162	0.262	14.870220	-27.799337	1915.74	-640.17
7	GUIDE	842015640	10.04	4567	-0.063	-0.037	0.109	0.174	14.176649	-27.233495	-997.15	112.57

2.4 Star Slots

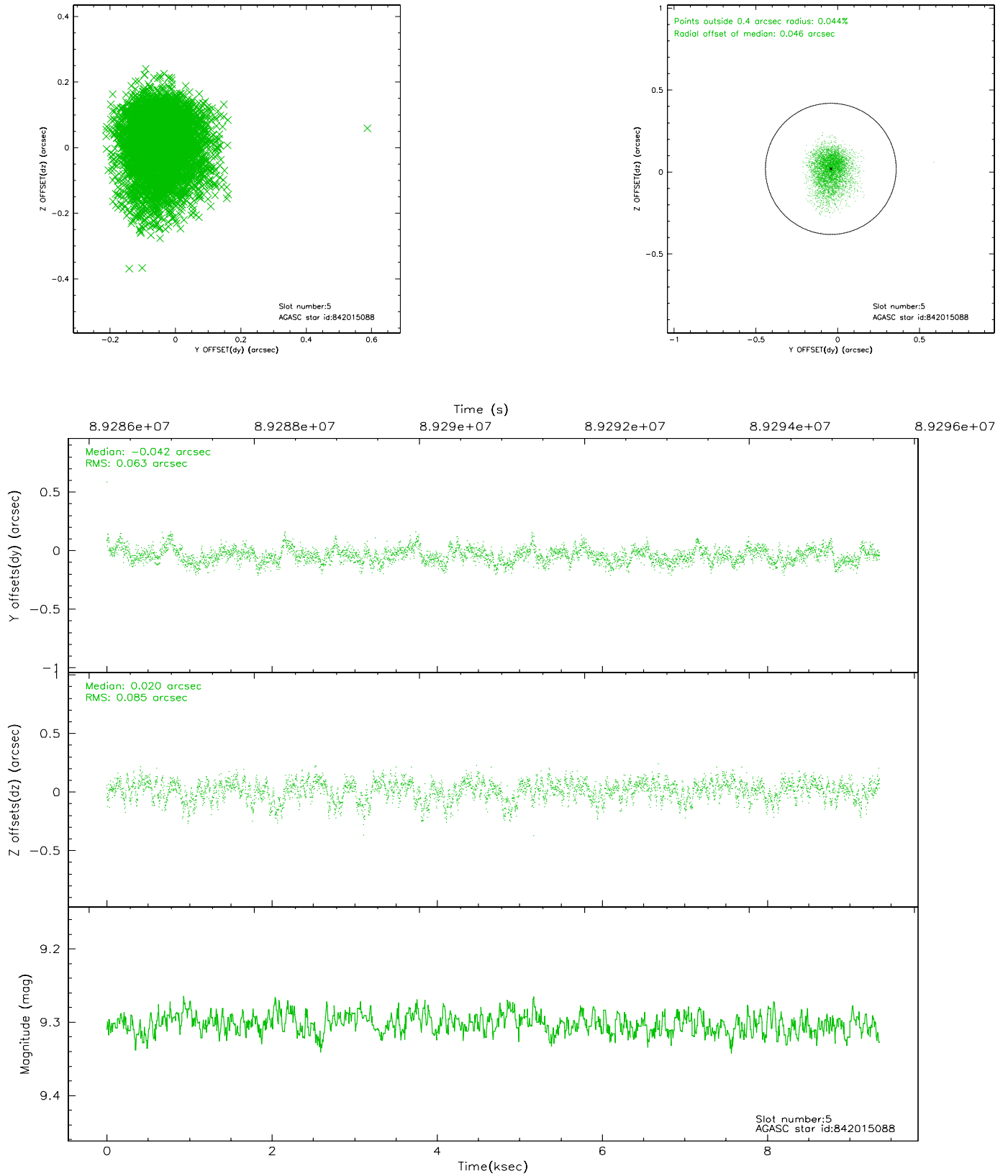
2.4.1 Slot 3



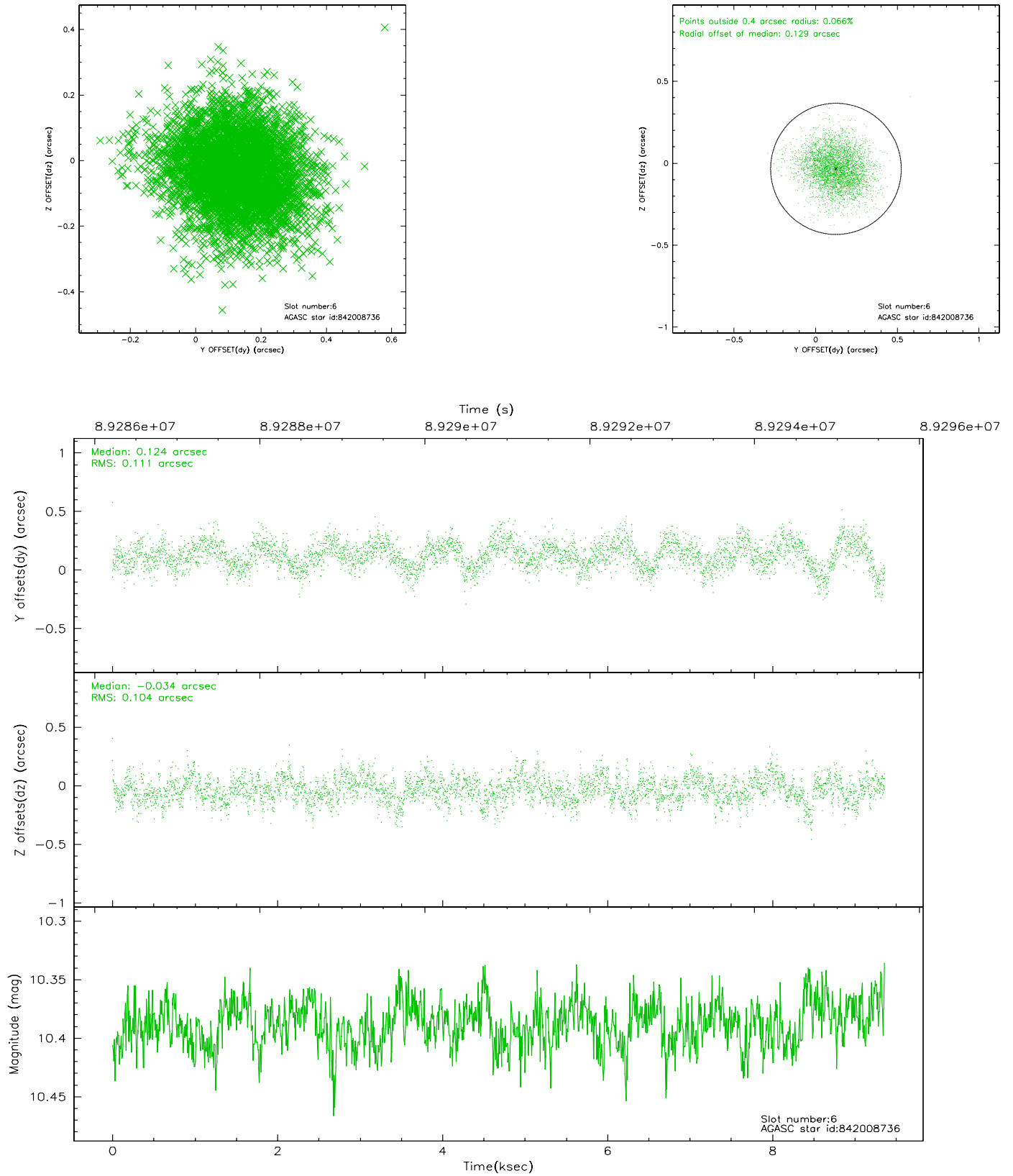
2.4.2 Slot 4



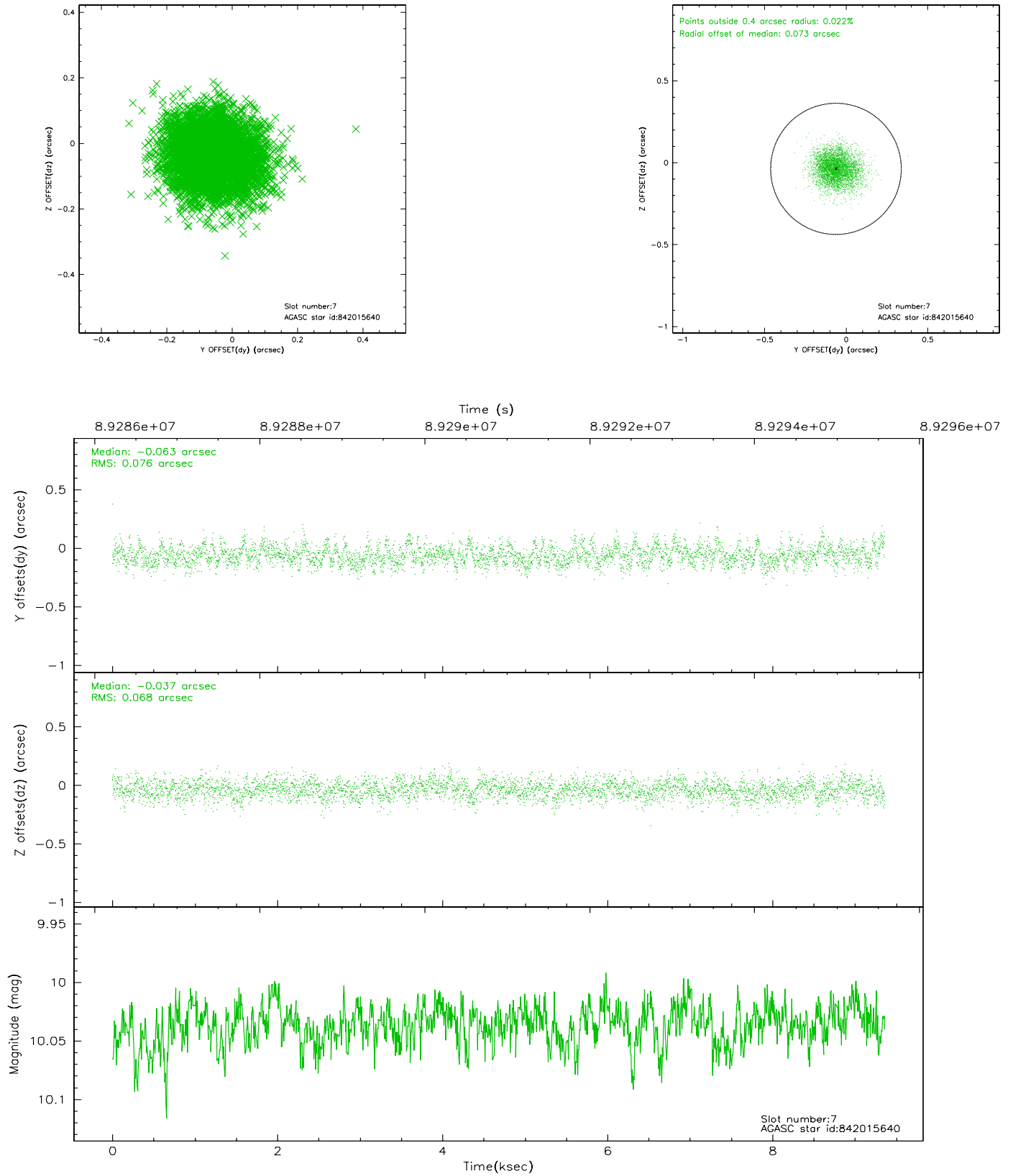
2.4.3 Slot 5



2.4.4 Slot 6

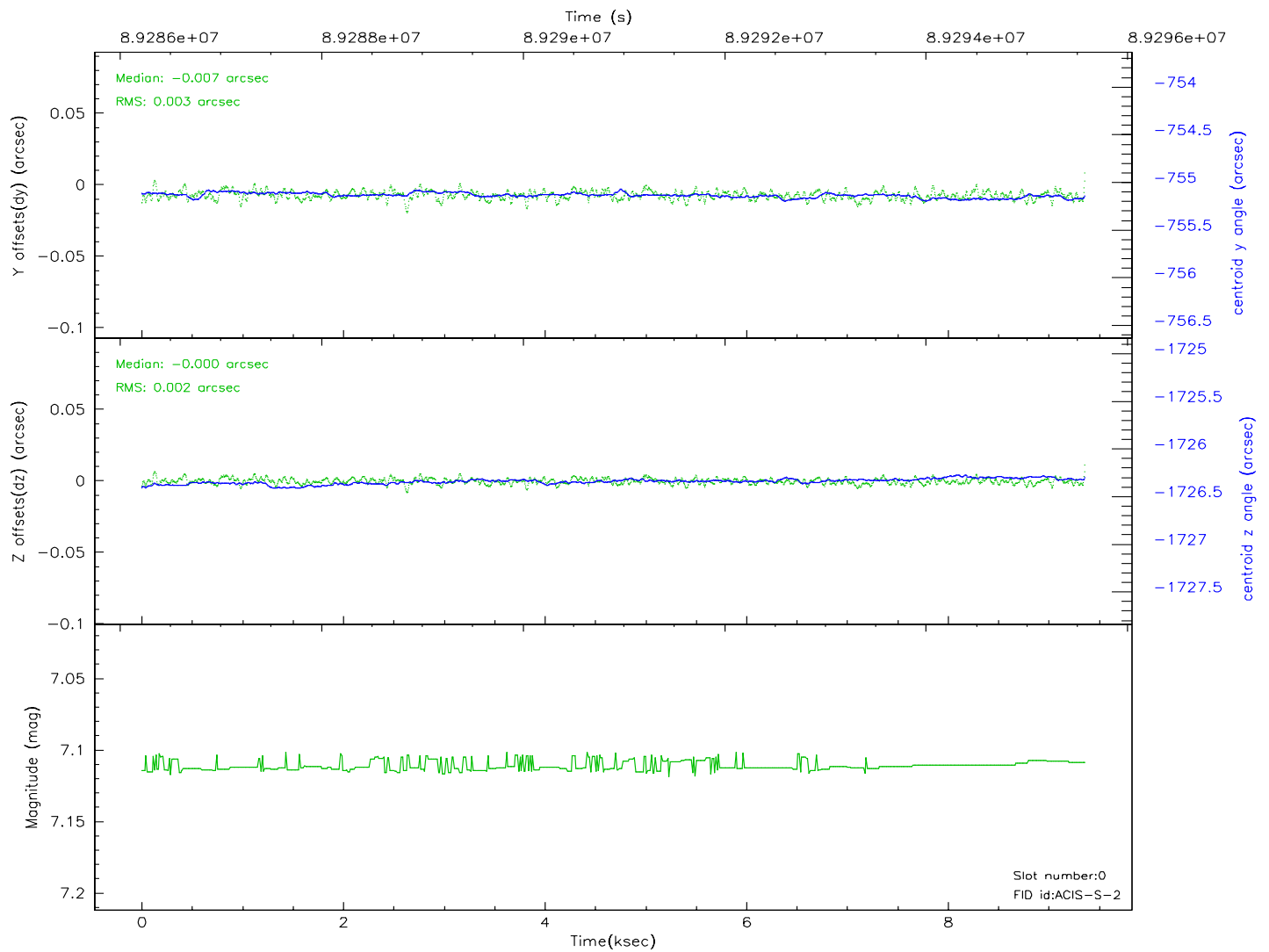
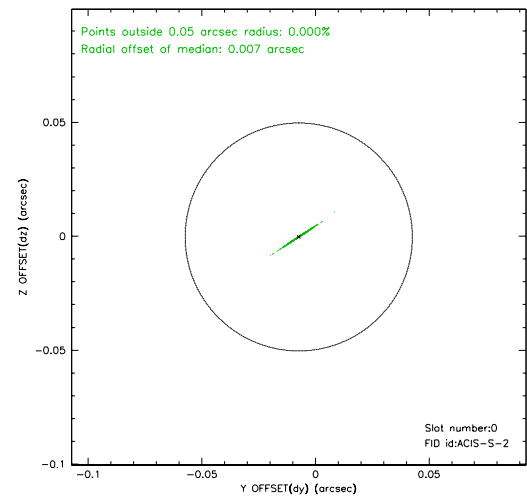
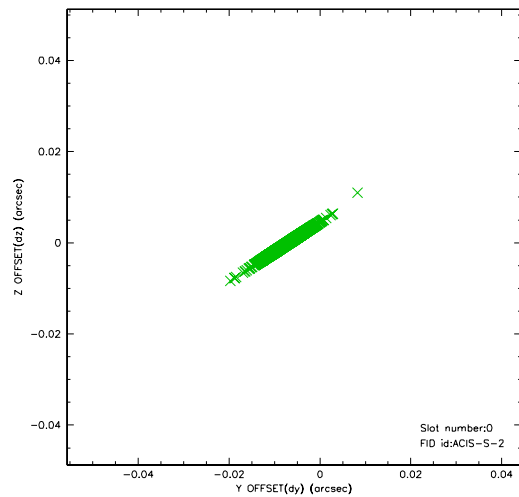


2.4.5 Slot 7

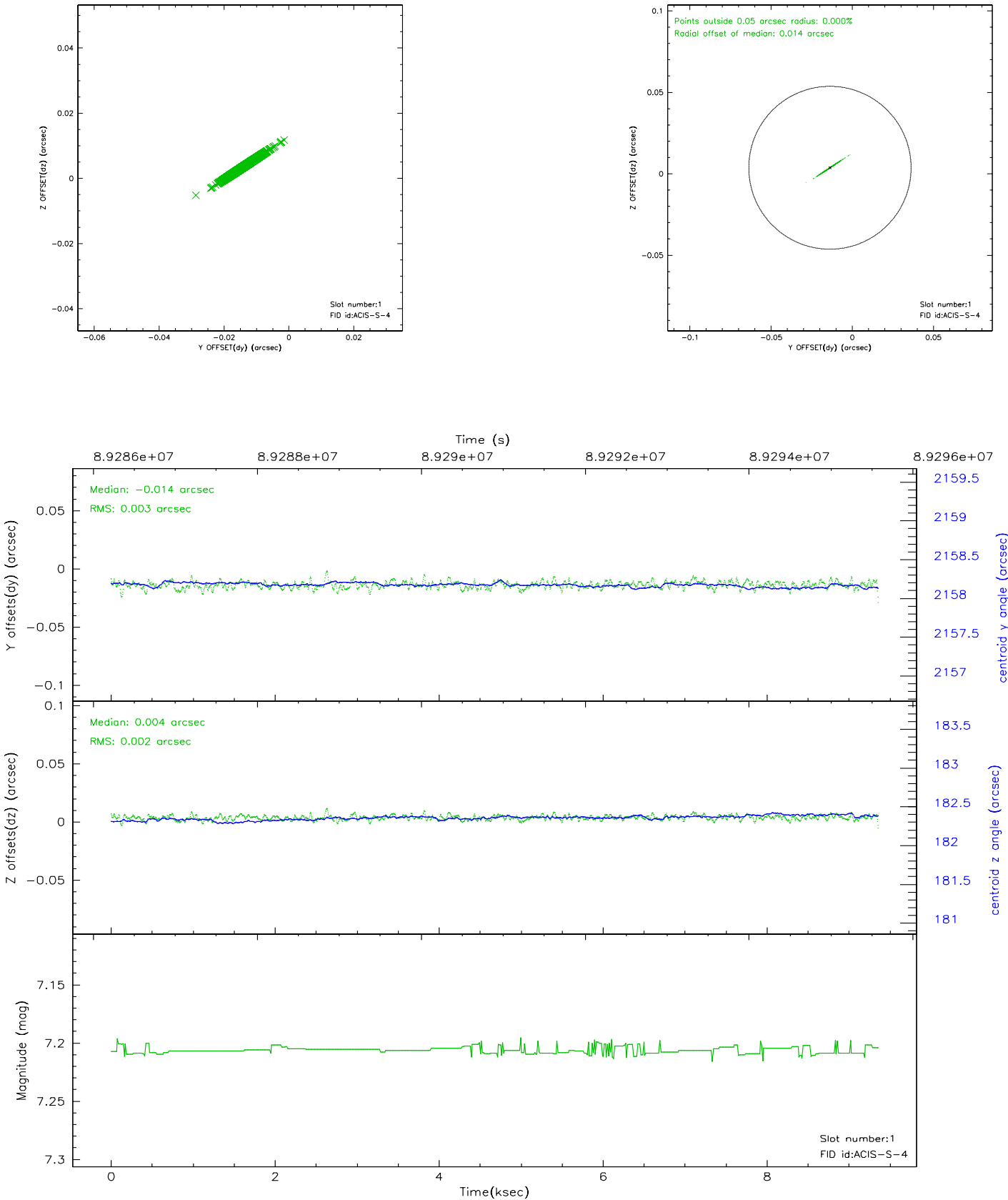


2.5 FID Slots

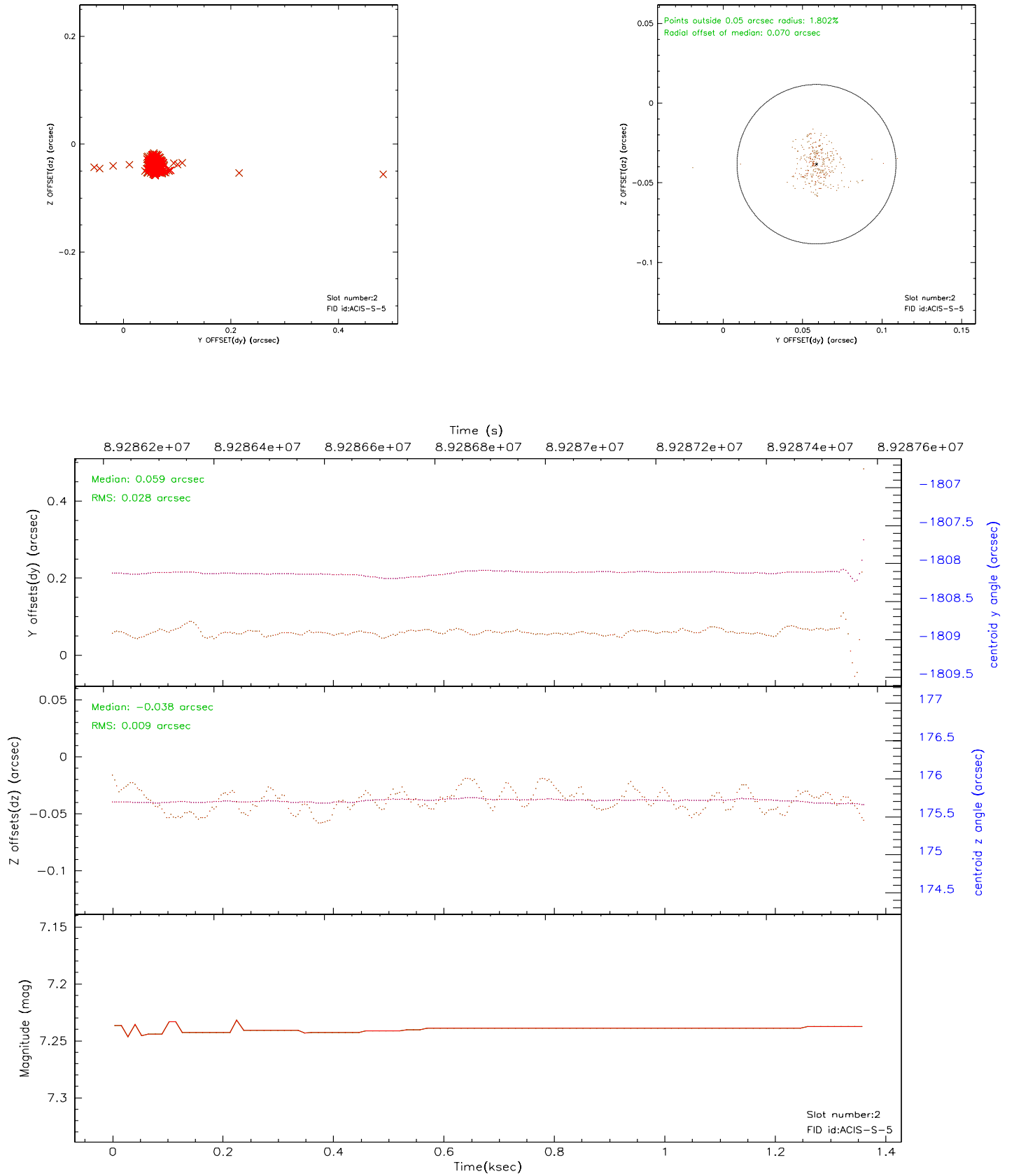
2.5.1 Slot 0



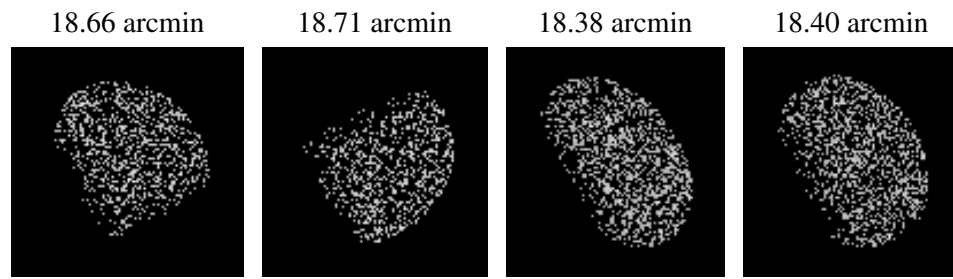
2.5.2 Slot 1



2.5.3 Slot 2



3 Point Sources



A Summary

A.1 Status

V&V Scientist	Beth Sundheim
V&V Date (YYYY-MM-DD)	2007.06.14
V&V Edition	1
V&V Disposition and Status	OK
V&V Charge Time	8.96

A.2 Comments

The fid light in slot 2 was removed from the aspect solution due to poor data quality. The aspect solution is not expected to be degraded by removing one fid light or guide star from the solution.