

# V&V Reference Report

## L2 ASCDS Version : 8.4.5

Observation 2244 - L2 Version 3  
Chandra X-Ray Center

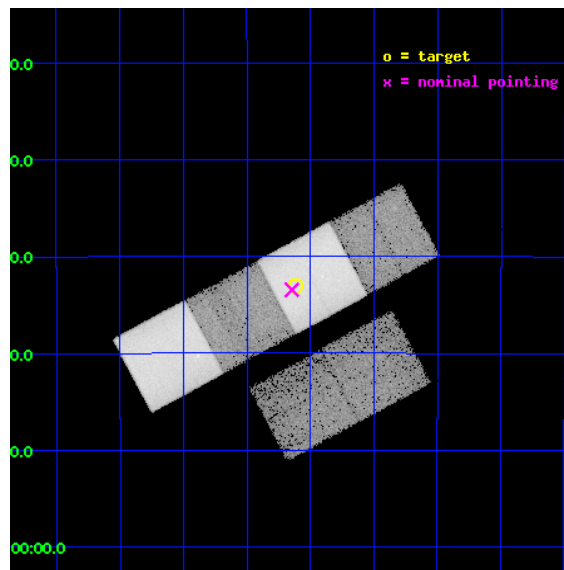
L2 Processing Date : Sep 2 2012

## Contents

<b>1</b>	<b>Front</b>	<b>2</b>
<b>2</b>	<b>OBI</b>	<b>3</b>
2.1	OBI . . . . .	3
2.1.1	Images . . . . .	3
2.1.2	Bias . . . . .	3
2.1.3	Parameters . . . . .	4
2.1.4	Events . . . . .	4
2.2	Compared Parameters . . . . .	5
2.3	Aspect . . . . .	6
2.4	Star Slots . . . . .	9
2.4.1	Slot 3 . . . . .	9
2.4.2	Slot 4 . . . . .	10
2.4.3	Slot 5 . . . . .	11
2.4.4	Slot 6 . . . . .	12
2.4.5	Slot 7 . . . . .	13
2.5	FID Slots . . . . .	14
2.5.1	Slot 0 . . . . .	14
2.5.2	Slot 1 . . . . .	15
2.5.3	Slot 2 . . . . .	16
<b>A</b>	<b>Summary</b>	<b>17</b>
A.1	Status . . . . .	17
A.2	Comments . . . . .	17

# 1 Front

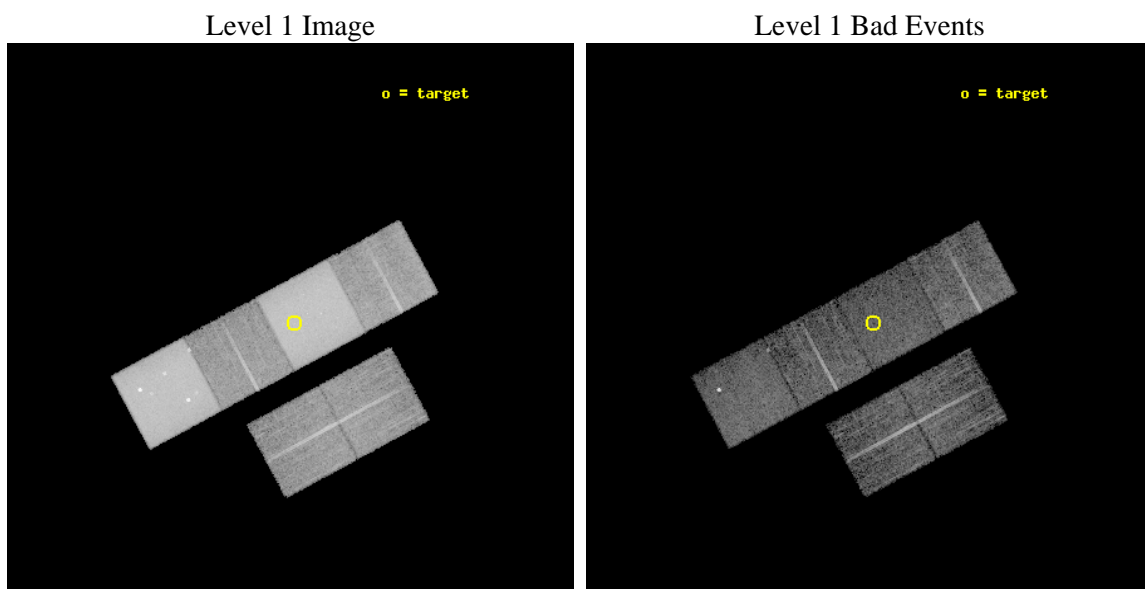
seq_num	900071	Sequence number
obs_id	2244	Observation id
title	THE NATURE OF NARROW-LINE, FIR-LUMINOUS, X-RAY GALAXIES	Proposal t
observer	PROFESSOR TOM SHANKS	Principal investigator
object	GSGP4X:069	Source name
dtcycle	0	&#160
cycle	P	events from which exps? Prim/Second/Both
ra_targ	14.402917	Observer's specified target RA [deg]
dec_targ	-27.551389	Observer's specified target Dec [deg]
ra_nom	14.411606405817	Nominal RA [deg]
dec_nom	-27.557580168051	Nominal Dec [deg]
roll_nom	331.76080459525	Nominal Roll [deg]
revision	3	Processing version of data
ontime	9241.600008592	Sum of GTIs [s]
livetime	9124.5773046598	Livetime [s]
ontime2	9241.600008592	Sum of GTIs [s]
ontime3	9241.600008592	Sum of GTIs [s]
ontime5	9241.600008592	Sum of GTIs [s]
ontime6	9241.600008592	Sum of GTIs [s]
ontime7	9241.600008592	Sum of GTIs [s]
ontime8	9238.359038353	Sum of GTIs [s]
l2events	398509	Number of level 2 events



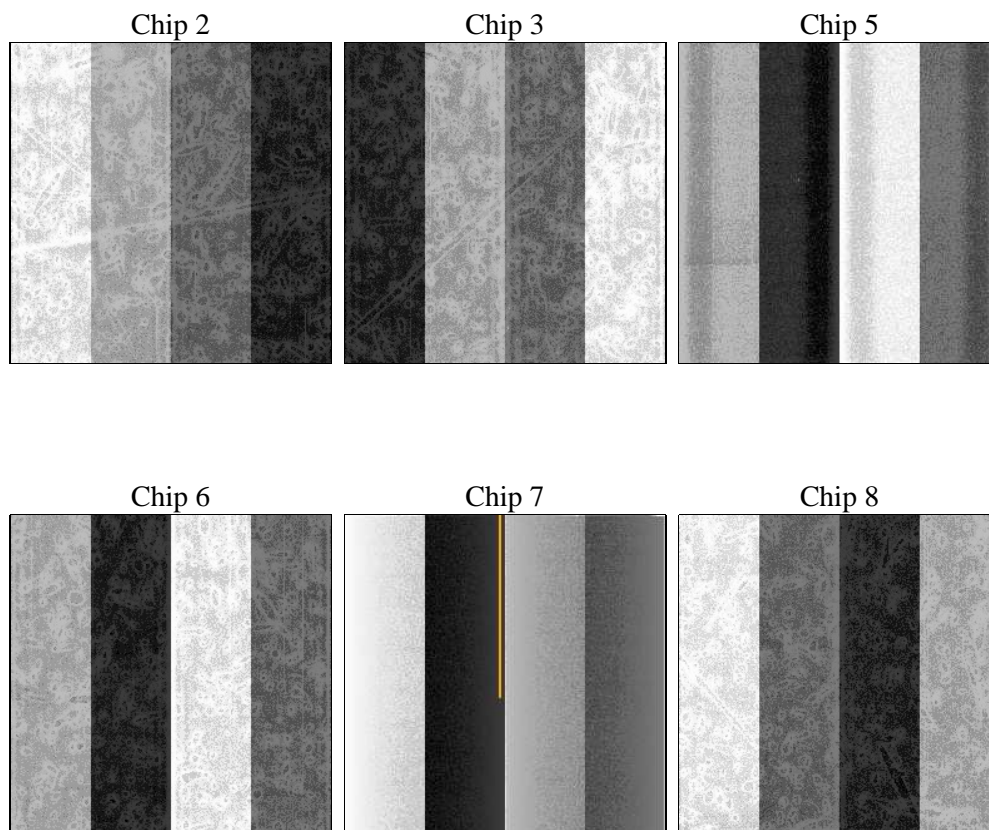
## 2 OBI

### 2.1 OBI

#### 2.1.1 Images



#### 2.1.2 Bias



### 2.1.3 Parameters

obi_num	0	Obi number	sched_exp_time	9483.613000	[s] Scheduled observation exposure time
ascdsver	8.4.5	Processing system revision	ontime	9241.600008592	Sum of GTIs [s]
caldsver	4.5.1.1	&#160	ontime2	9241.600008592	Sum of GTIs [s]
date	2012-09-03T00:18:12	Date and time of file creation	ontime3	9241.600008592	Sum of GTIs [s]
revision	3	Processing version of data	ontime5	9241.600008592	Sum of GTIs [s]
			ontime6	9241.600008592	Sum of GTIs [s]
			ontime7	9241.600008592	Sum of GTIs [s]
			ontime8	9238.359038353	Sum of GTIs [s]
			l1events	730133	Number of level 1 events

### 2.1.4 Events

	ccd 2	ccd 3	ccd 5	ccd 6	ccd 7	ccd 8		ccd 2	ccd 3	ccd 5	ccd 6	ccd 7	ccd 8
level 1 events	63734	65124	223176	71105	220760	86234	grade 0 events	8594	8955	30764	15283	20764	15339
rejected events	50406	51445	54281	49872	44059	59598		13%	13%	13%	21%	9%	17%
rejected %	79%	78%	24%	70%	19%	69%	grade 1 events	51	39	228	56	76	91
								0%	0%	0%	0%	0%	0%
							grade 2 events	2112	2077	46304	2758	31401	4121
								3%	3%	20%	3%	14%	4%
							grade 3 events	677	735	10445	811	13929	1844
								1%	1%	4%	1%	6%	2%
							grade 4 events	700	648	10178	858	13858	1743
								1%	0%	4%	1%	6%	2%
							grade 5 events	1911	2033	8090	2268	7487	2836
								2%	3%	3%	3%	3%	3%
							grade 6 events	1248	1266	71266	1524	96799	3596
								1%	1%	31%	2%	43%	4%
							grade 7 events	48441	49371	45901	47547	36446	56664
								76%	75%	20%	66%	16%	65%

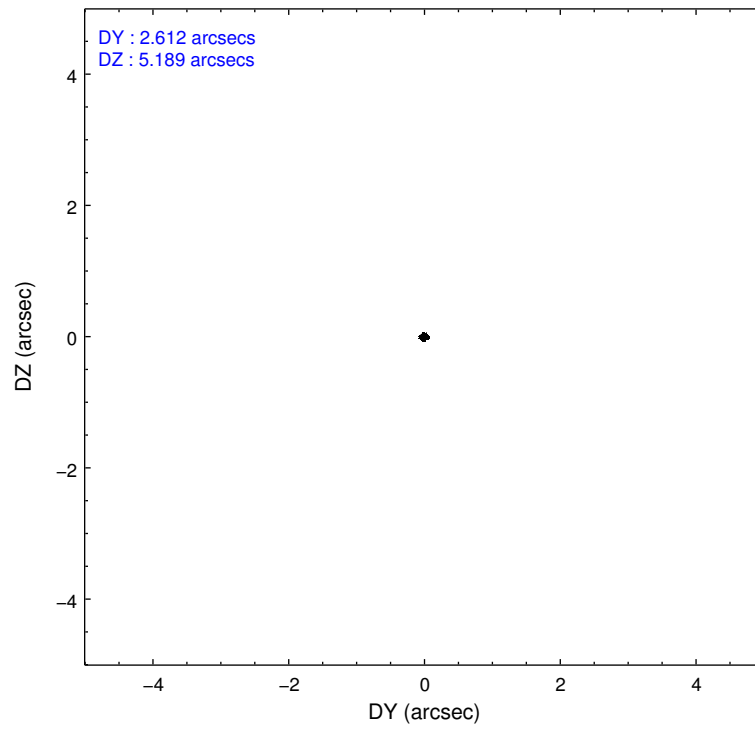
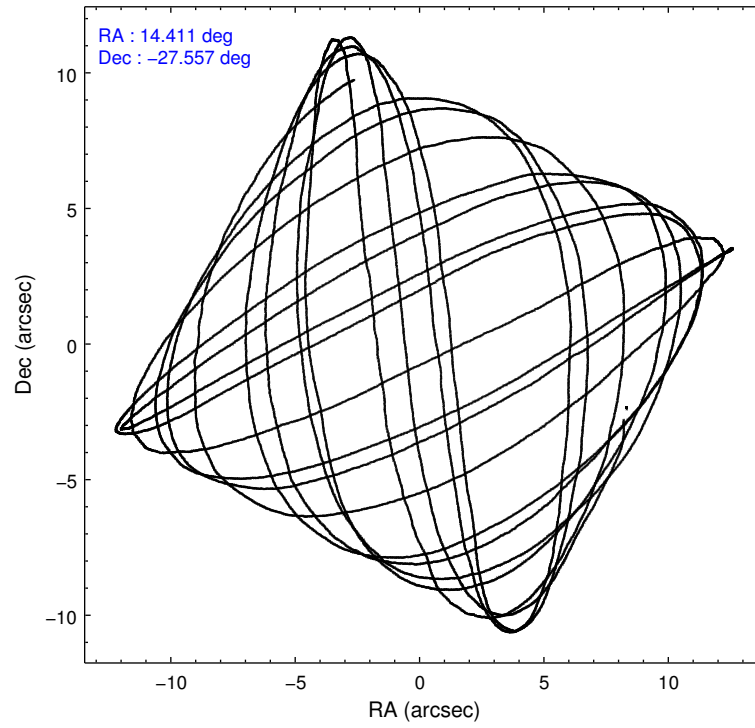


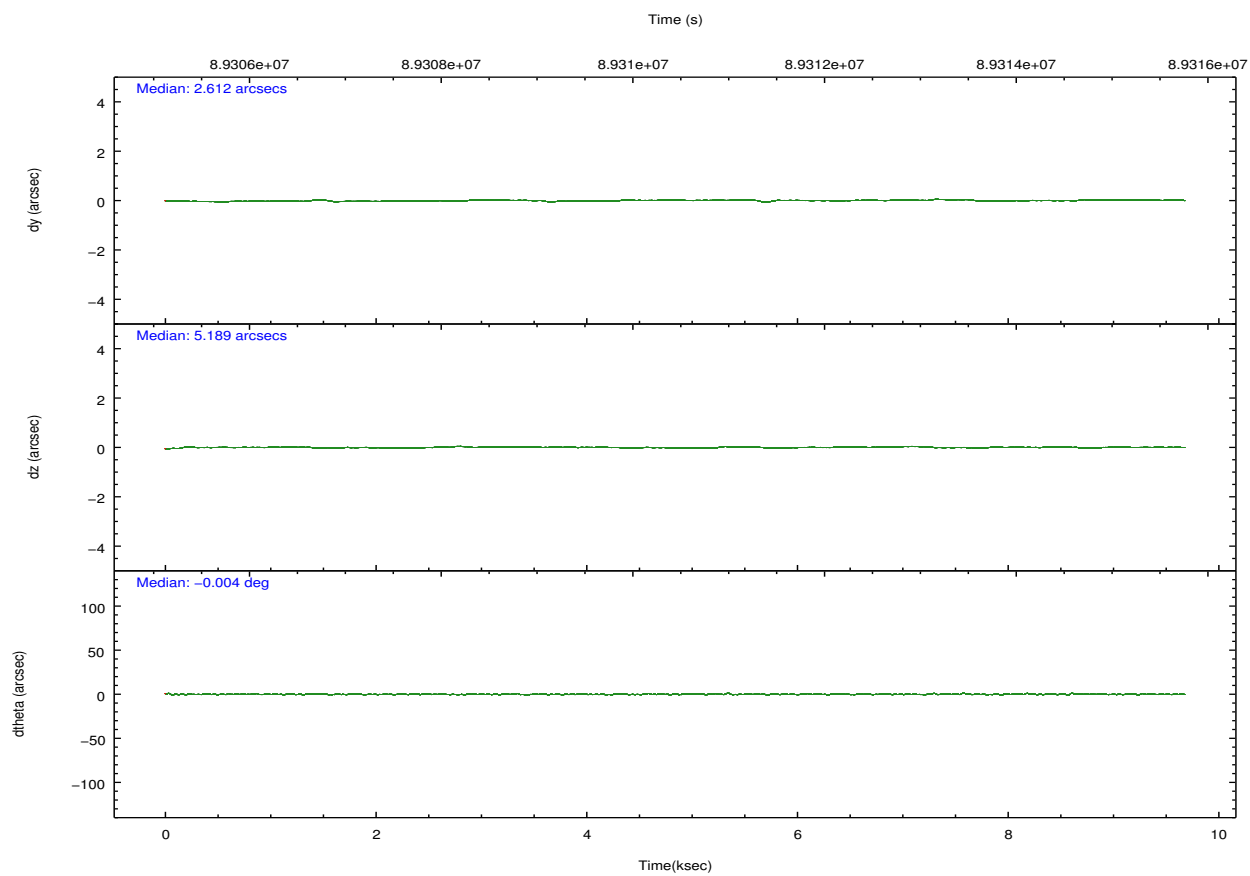
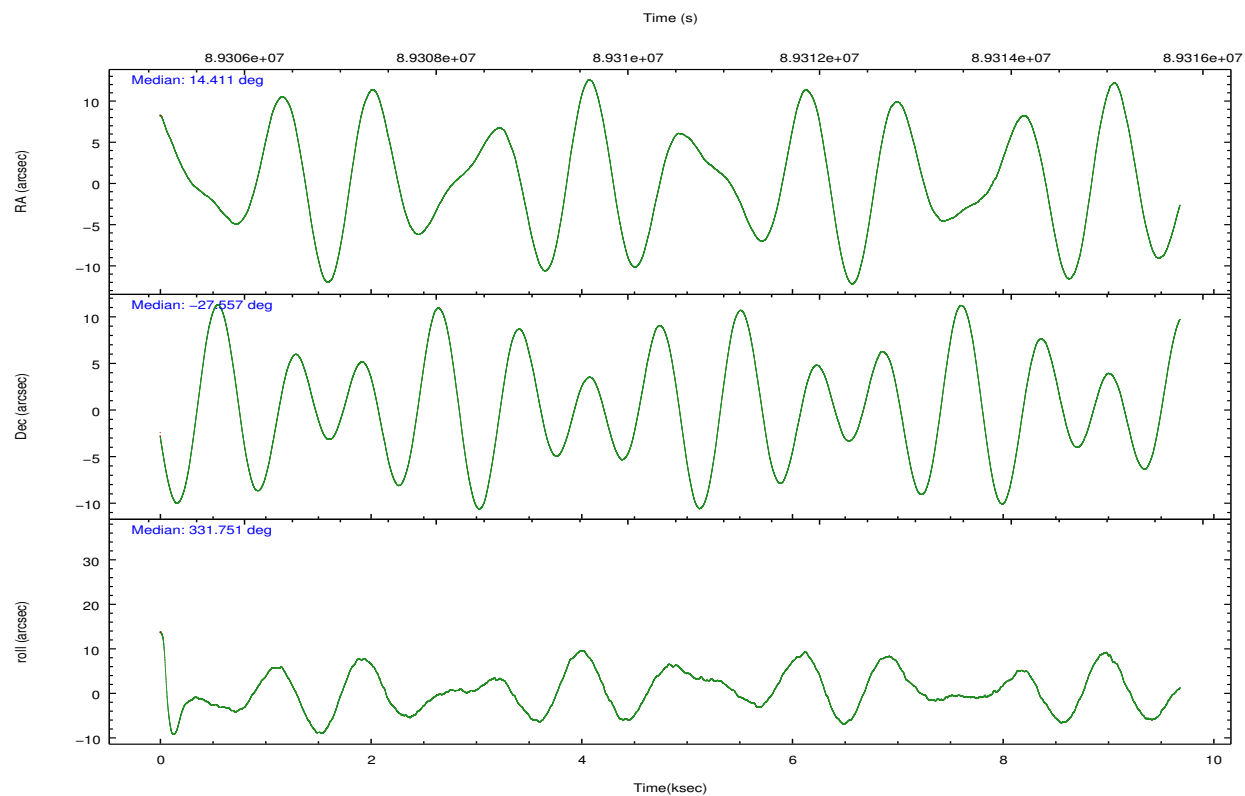
## 2.2 Compared Parameters

Parameter	Planned	Actual
Instrument	ACIS	ACIS
Detector	ACIS-235678	ACIS-235678
Grating	NONE	NONE
Data mode	FAINT	FAINT
Observation mode	POINTING	POINTING
[deg] Pointing RA	14.380783	14.41160640581704
[deg] Pointing Dec	-27.558583	-27.55758016805104
[deg] Pointing Roll	331.589914	331.7608045952486
[mm] SIM focus pos	-0.684267	-0.6828225247311905
[mm] SIM defocus	0	0.001444936568705701
[mm] SIM translation stage pos	-190.132523	-190.1400660498719
[mm] SIM translation stage offset	0	0.00754346686406393
[s] Observation start time (MET)	89305795.184000	89305418.94576401
Observation start date	2000-10-30T15:08:51	2000-10-30T15:03:38
[s] Observation end time (MET)	89315278.184000	89315593.096148
Observation end date	2000-10-30T17:46:54	2000-10-30T17:53:13
Read mode	TIMED	TIMED

Parameter	Planned	Actual
Obspar format version number	7	7
Obspar file type	PREDICTED	ACTUAL
Obspar update status	NONE	UPDATED
Number of optional ACIS chips dropped	0	0
On-chip summing requested	N	N
Subarray requested	NONE	NONE
Alternating exposures requested	N	N
[s] Primary exposure time	0.000000	3.2

## 2.3 Aspect



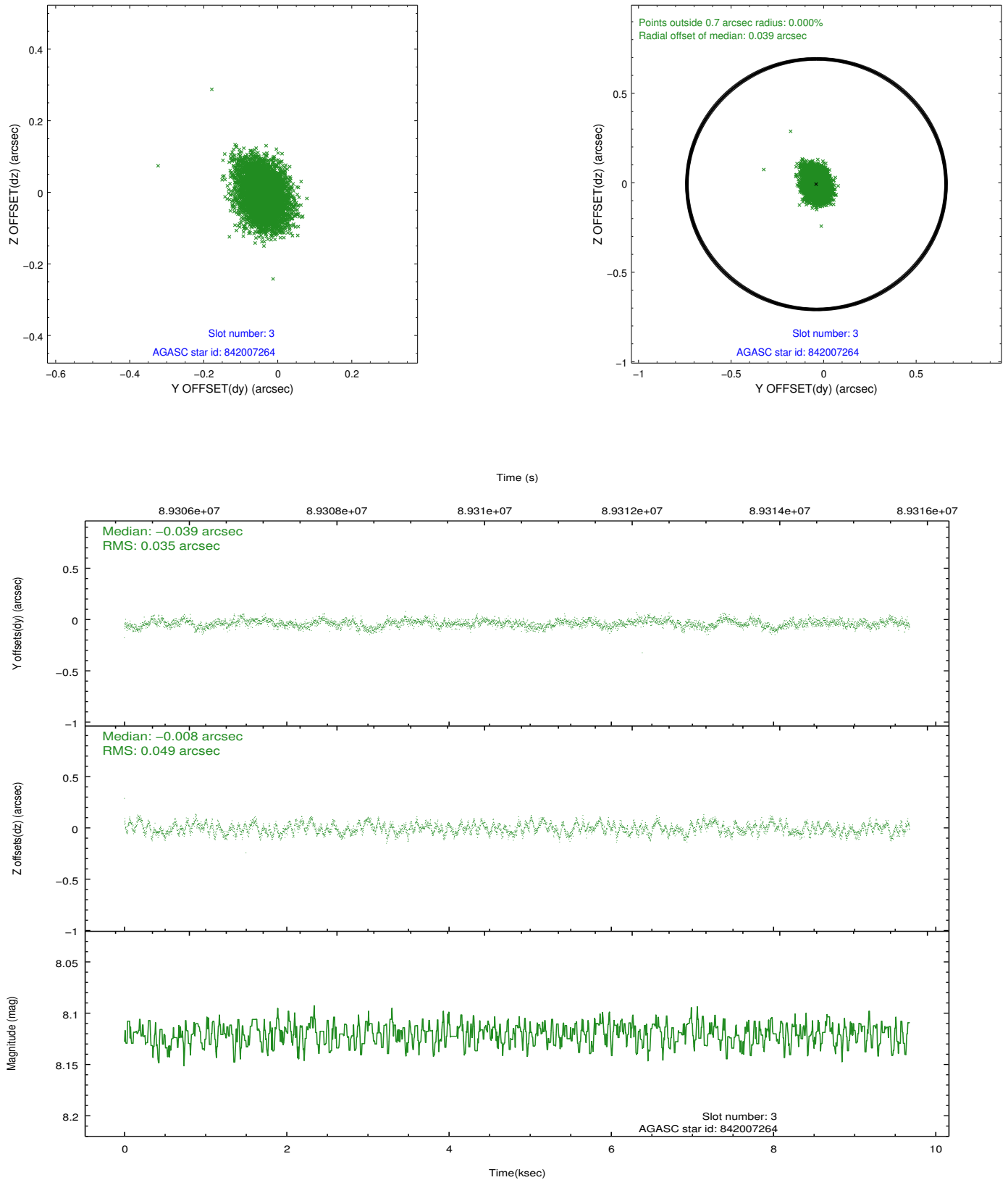


### Slot Statistics

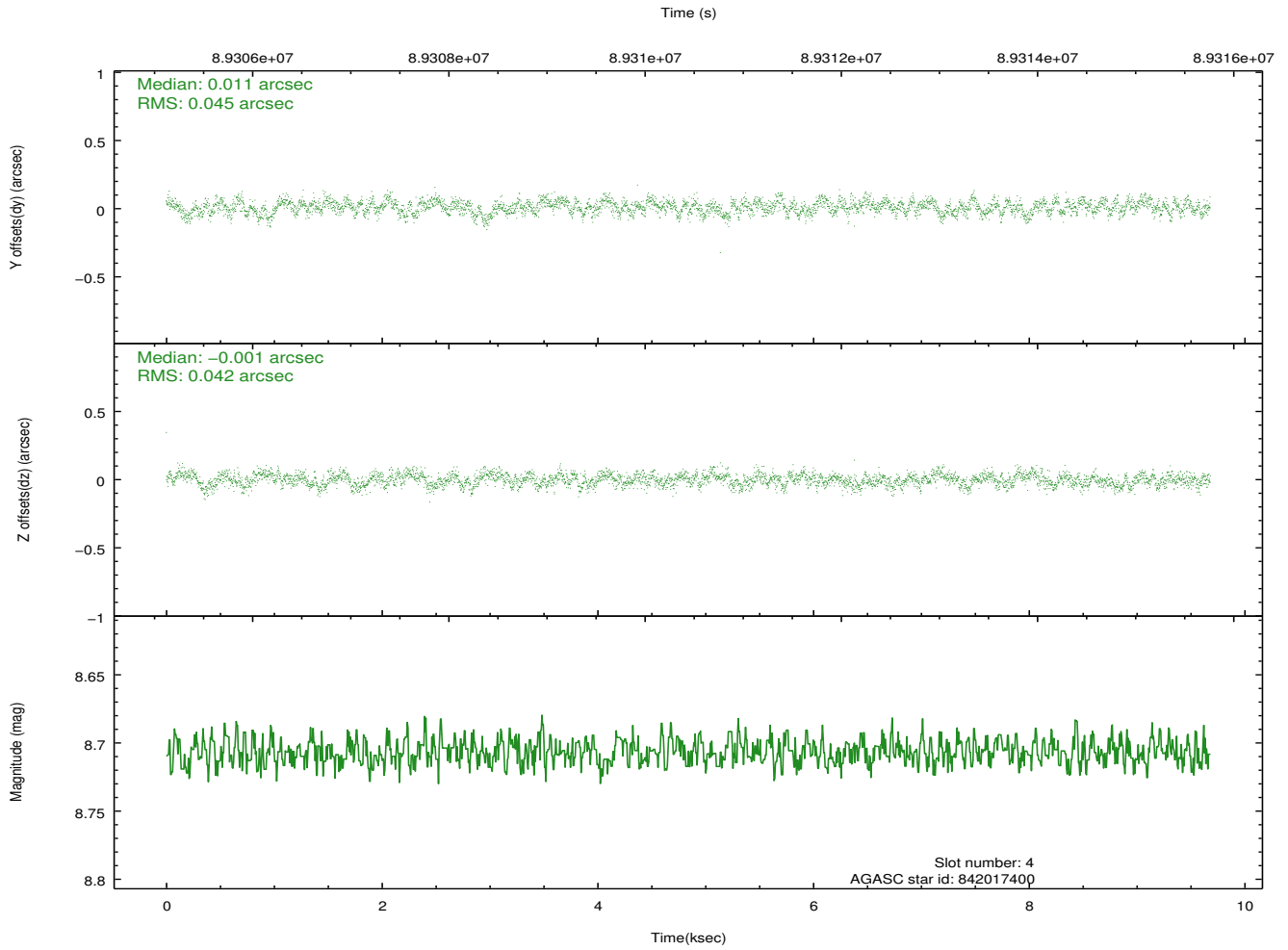
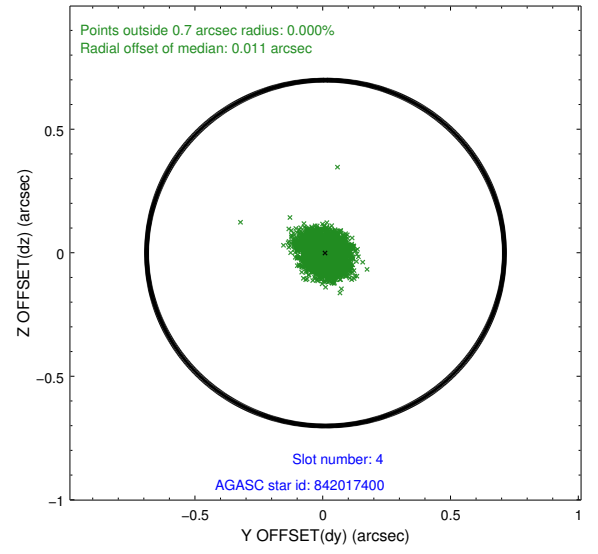
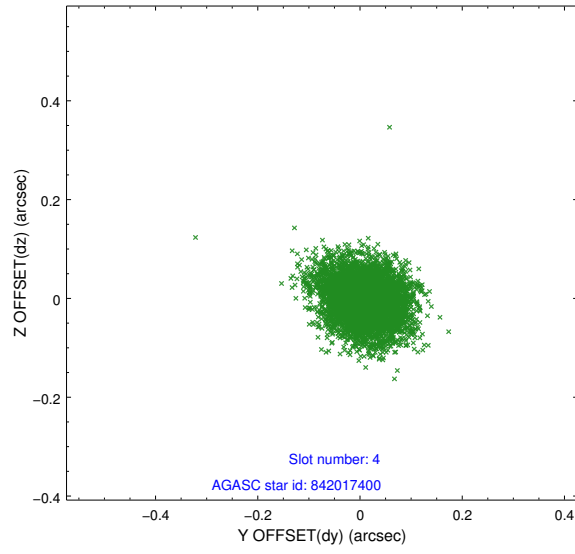
slot	status	id	mag	n_pts	med_dy	med_dz	dr1	dr2	ra	dec	mean_y	mean_z
0	FID	ACIS-S-3	7.36	2362	-0.088	-0.013	0.007	0.011	0.000000	0.000000	57.88	-1855.38
1	FID	ACIS-S-4	7.20	2362	0.008	0.053	0.006	0.010	0.000000	0.000000	2158.14	181.61
2	FID	ACIS-S-5	7.24	2362	0.052	-0.030	0.006	0.010	0.000000	0.000000	-1807.32	175.88
3	GUIDE	842007264	8.12	4723	-0.039	-0.008	0.063	0.103	14.570692	-27.092422	-261.61	1765.57
4	GUIDE	842017400	8.71	4723	0.011	-0.001	0.065	0.105	14.466062	-28.061705	1101.85	-1463.39
5	GUIDE	842015088	9.30	4721	-0.006	-0.020	0.091	0.151	13.933025	-27.893682	-675.84	-1741.27
6	GUIDE	842007696	9.69	4723	0.046	-0.058	0.102	0.167	14.456243	-28.218698	1343.03	-1976.29
7	GUIDE	842015640	10.02	4721	-0.009	0.089	0.118	0.198	14.176649	-27.233495	-1129.57	717.88

## 2.4 Star Slots

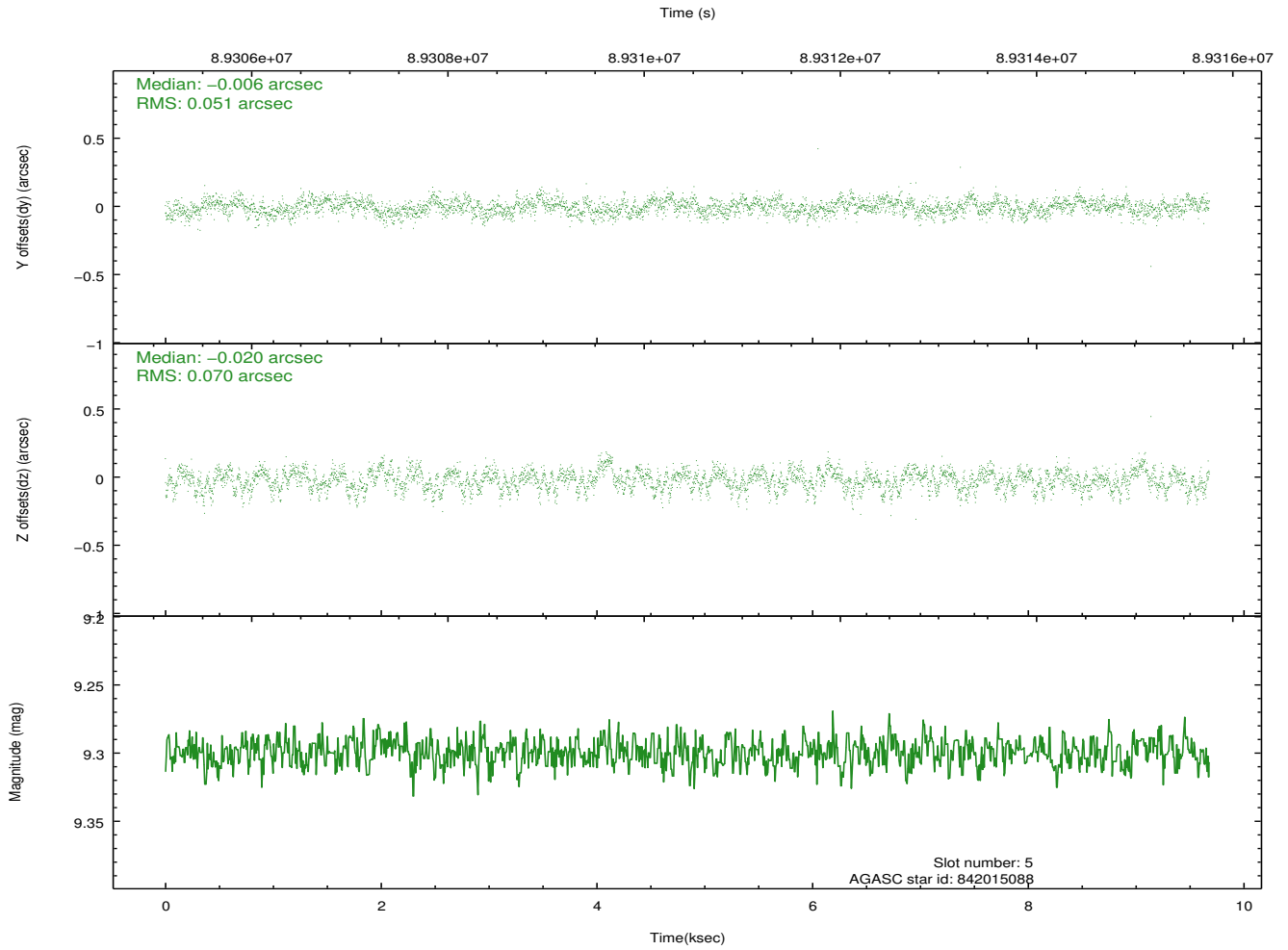
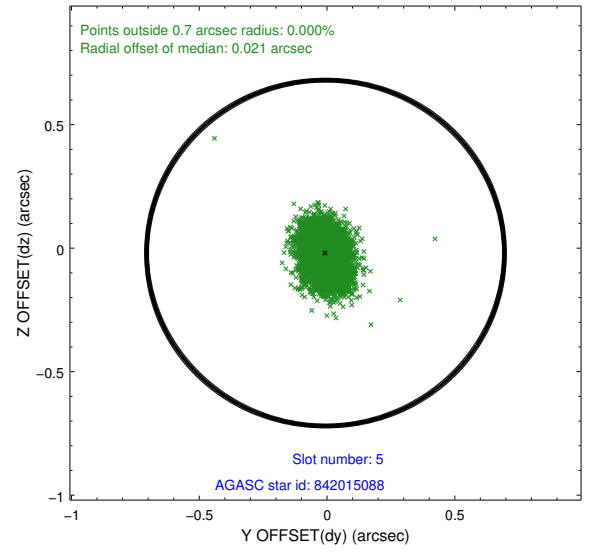
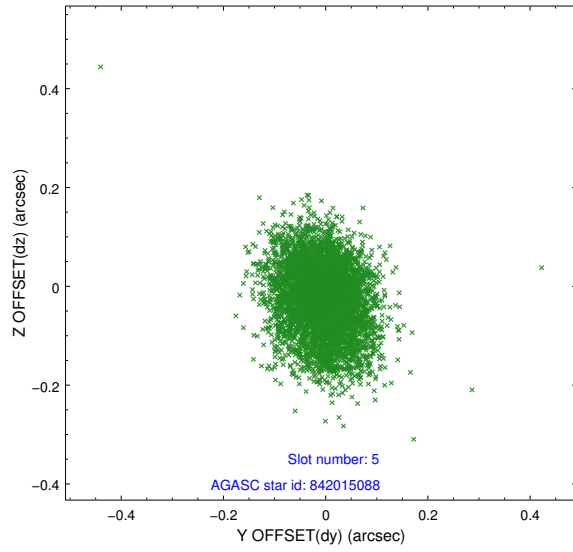
### 2.4.1 Slot 3



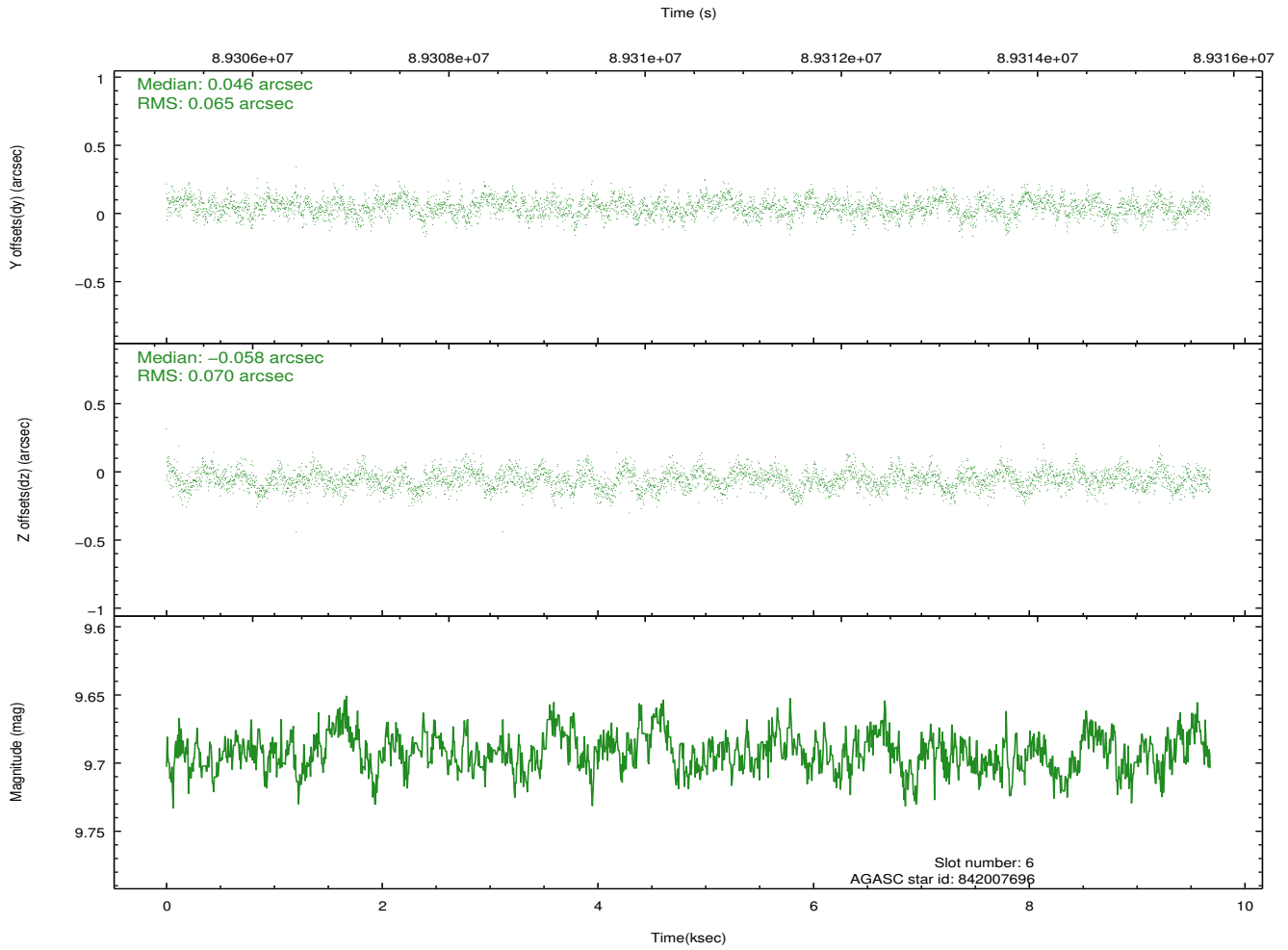
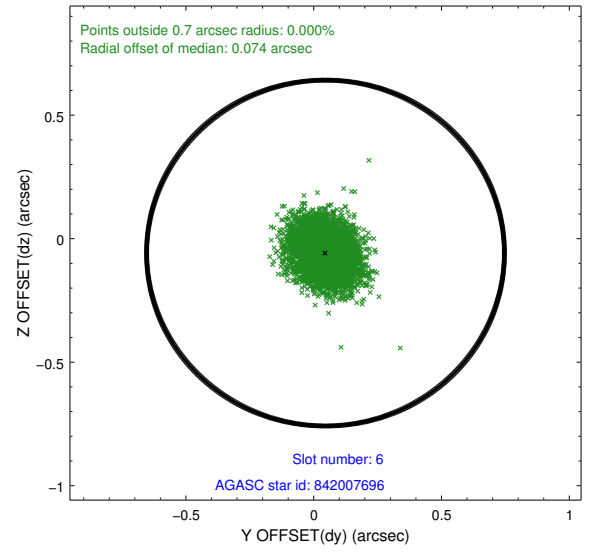
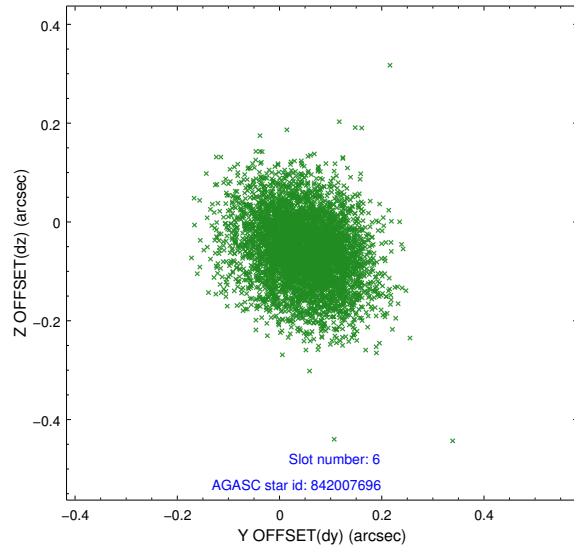
## 2.4.2 Slot 4



### 2.4.3 Slot 5

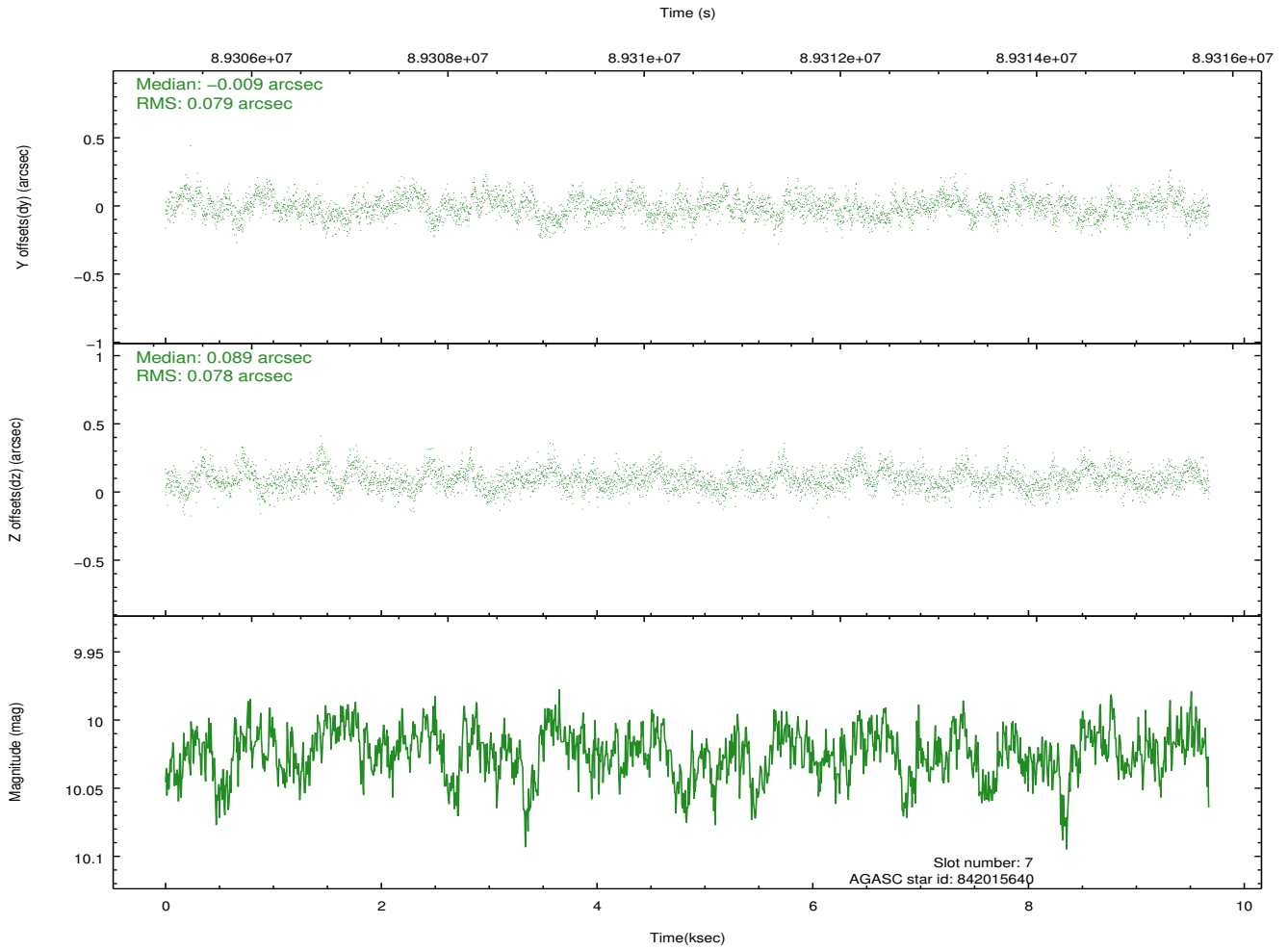
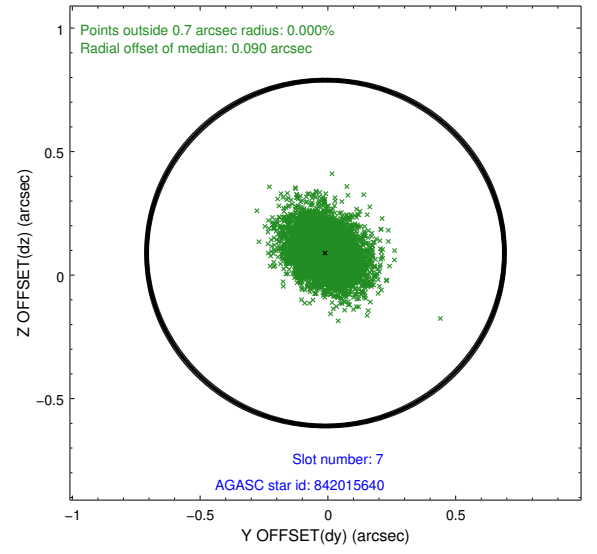
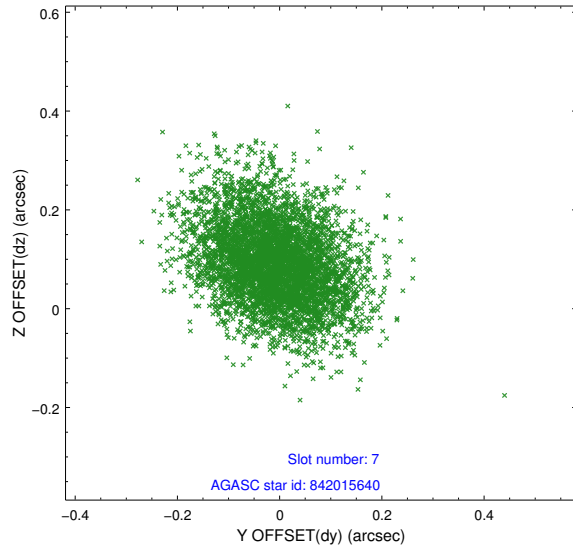


## 2.4.4 Slot 6



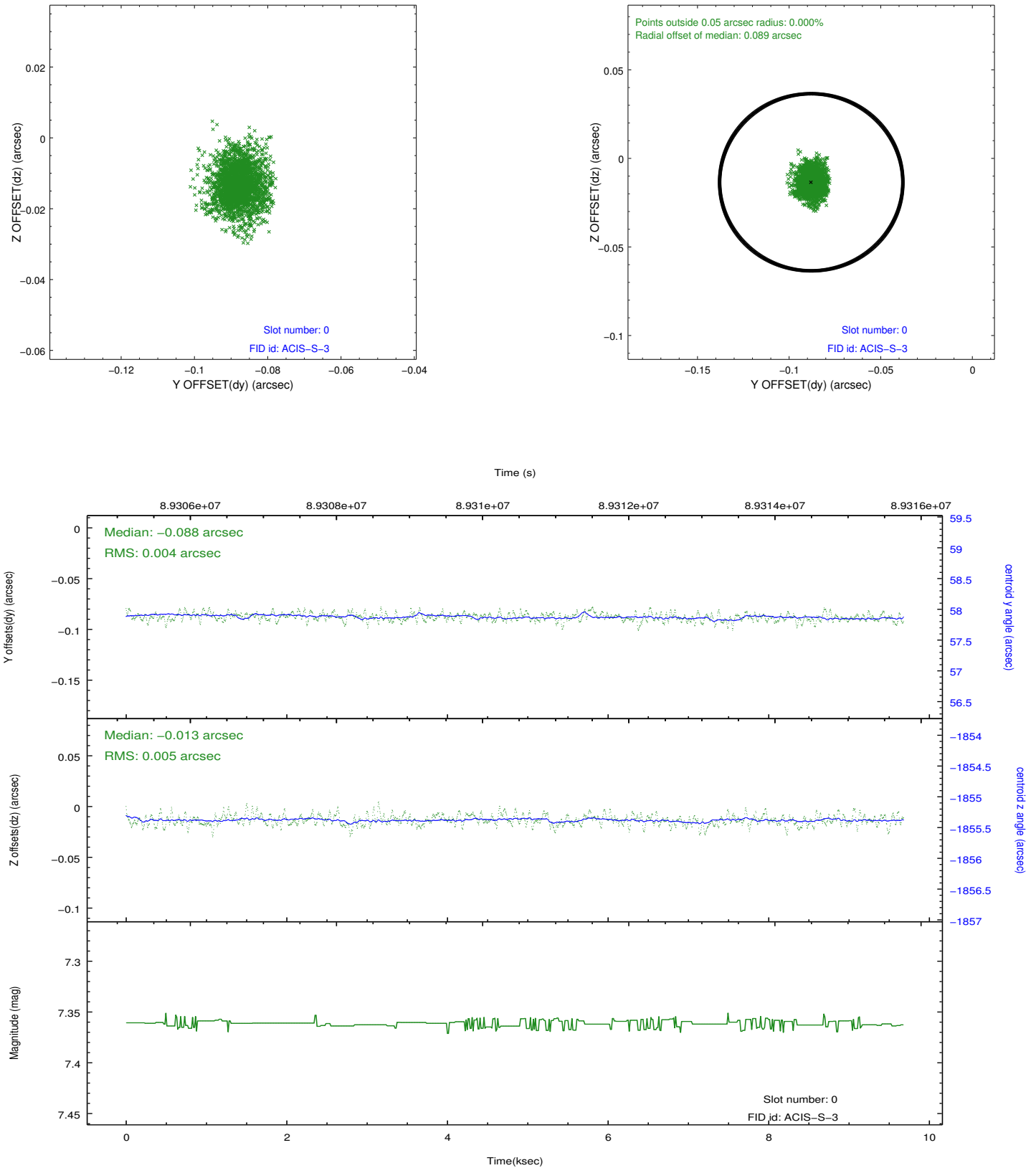


## 2.4.5 Slot 7

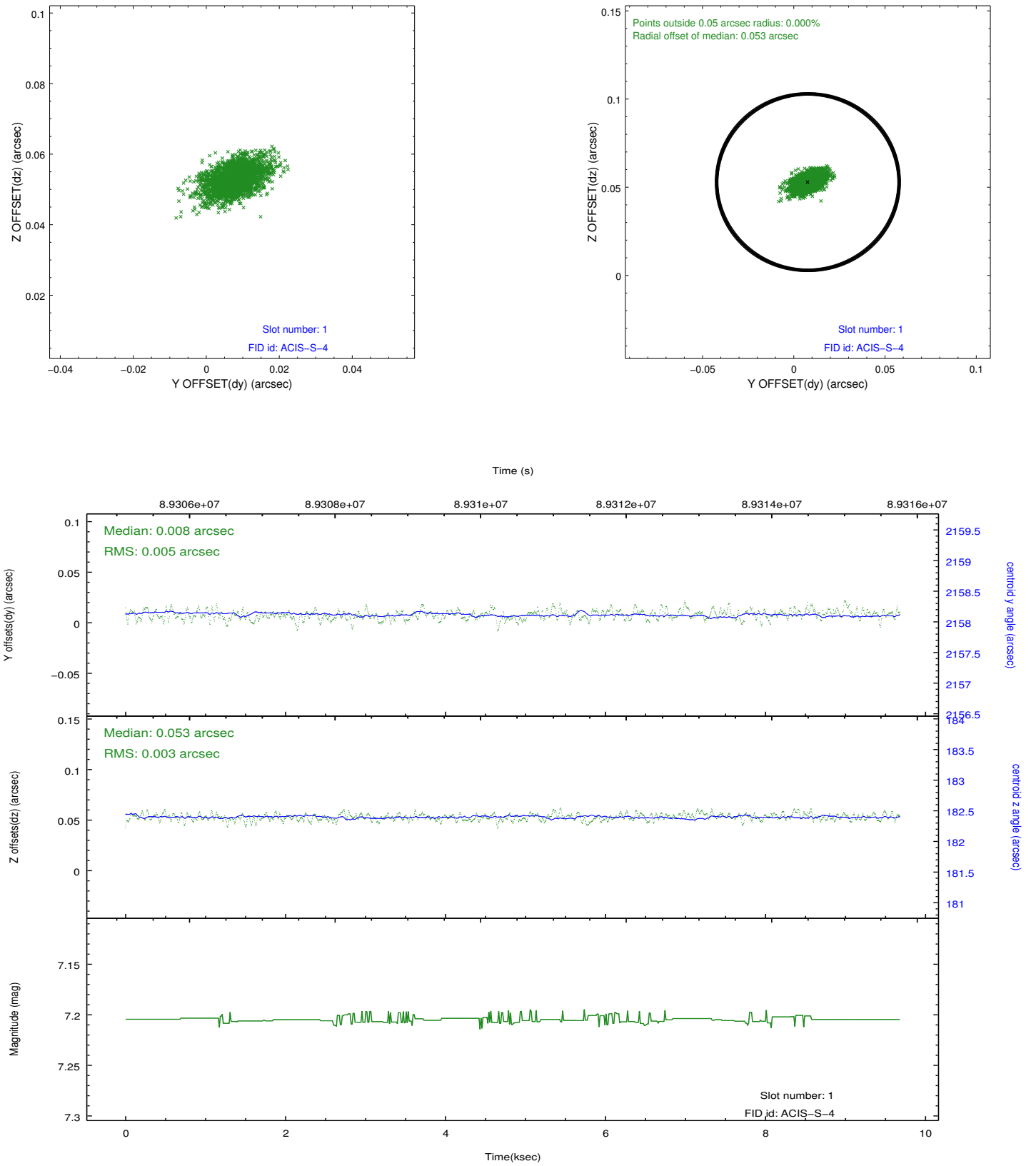


## 2.5 FID Slots

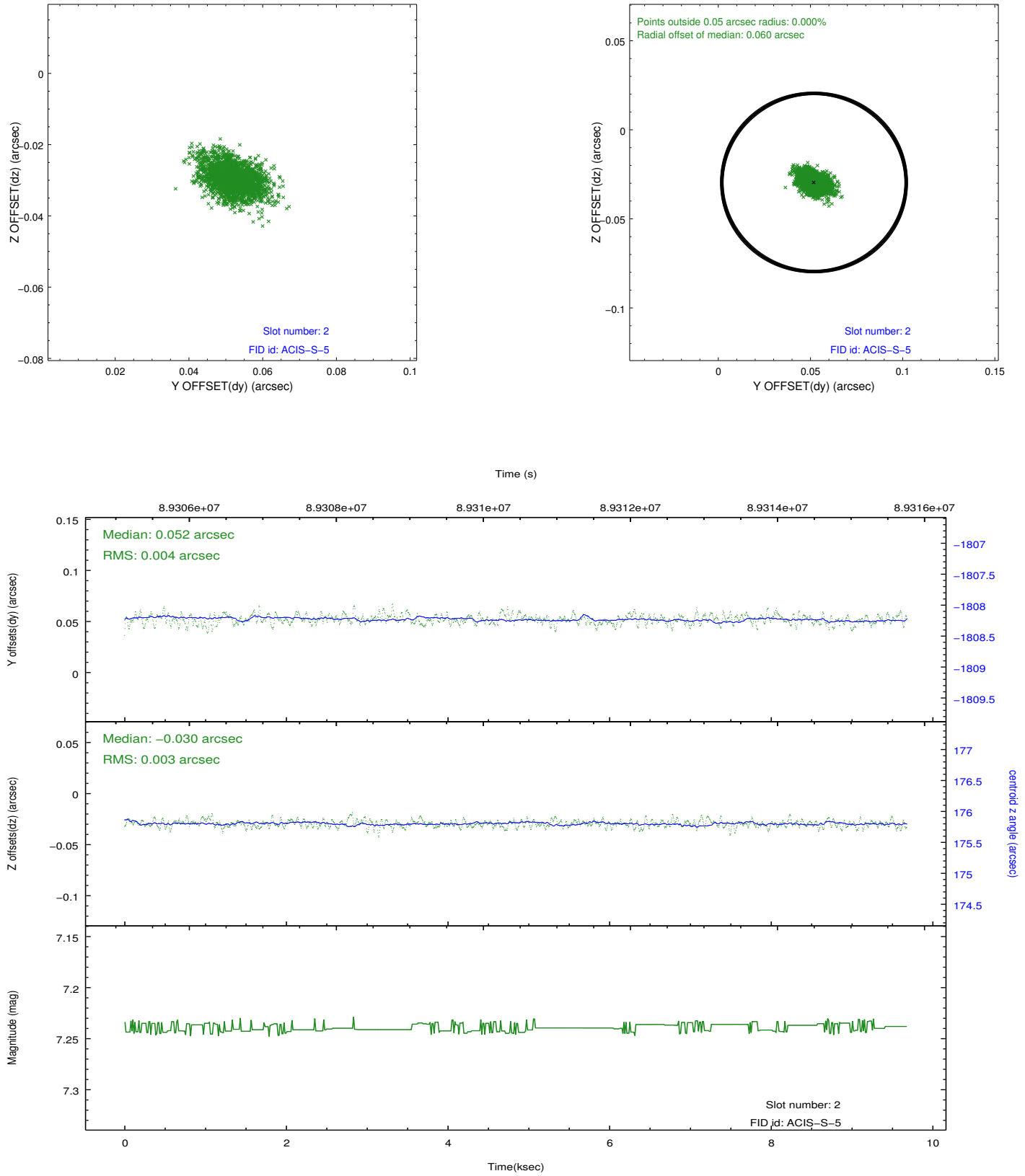
### 2.5.1 Slot 0



## 2.5.2 Slot 1



### 2.5.3 Slot 2



## A Summary

### A.1 Status

V&V Scientist	Jen Lauer
V&V Date (YYYY-MM-DD)	2012.09.10
V&V Edition	1
V&V Disposition and Status	OK
V&V Charge Time	9.244

### A.2 Comments