

V&V Reference Report

L2 ASCDS Version : 7.6.10

Observation 2244 - L2 Version 001
Chandra X-Ray Center

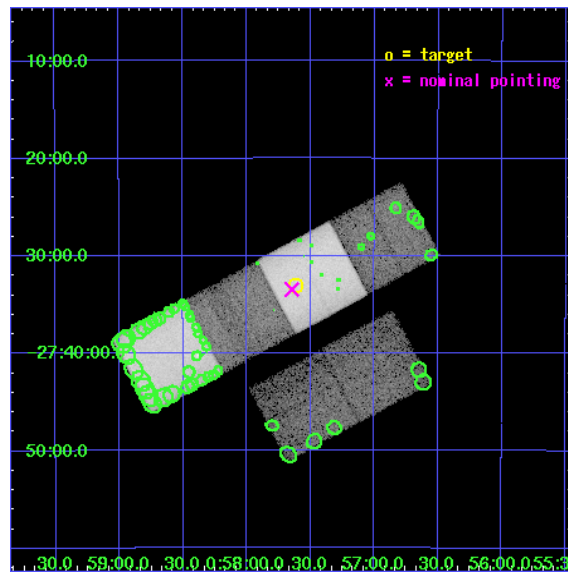
L2 Processing Date : Jun 14 2007

Contents

1	Front	2
2	OBI	3
2.1	OBI	3
2.1.1	Images	3
2.1.2	Bias	3
2.1.3	Parameters	4
2.1.4	Events	4
2.2	Compared Parameters	5
2.3	Aspect	6
2.4	Star Slots	9
2.4.1	Slot 3	9
2.4.2	Slot 4	10
2.4.3	Slot 5	11
2.4.4	Slot 6	12
2.4.5	Slot 7	13
2.5	FID Slots	14
2.5.1	Slot 0	14
2.5.2	Slot 1	15
2.5.3	Slot 2	16
3	Point Sources	17
A	Summary	18
A.1	Status	18
A.2	Comments	18

1 Front

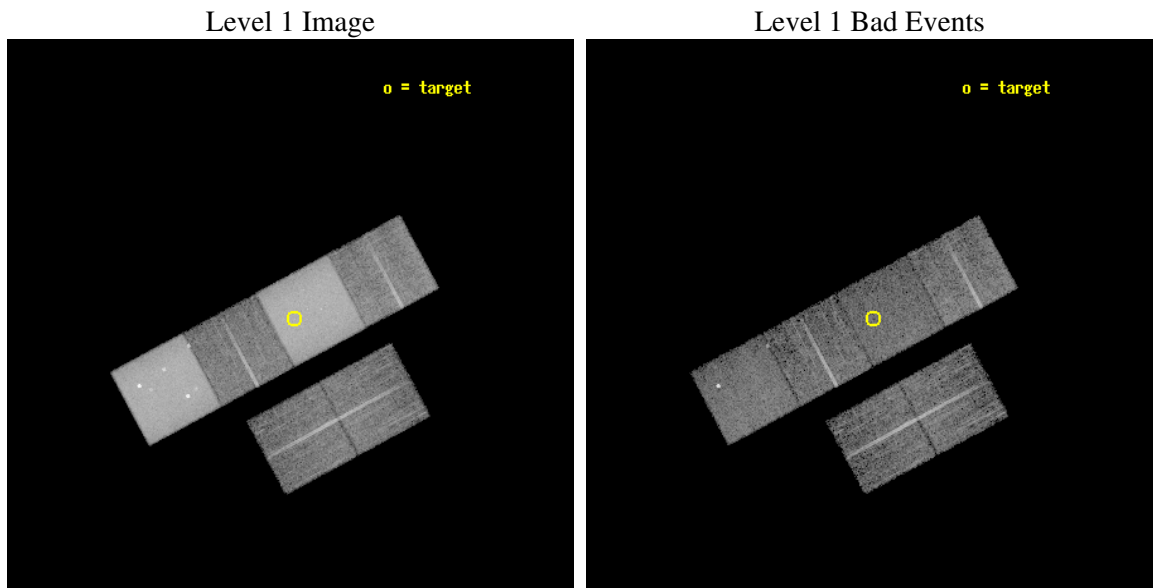
seq_num	900071
obs_id	2244
title	THE NATURE OF NARROW-LINE, FIR-LUMINOUS, X-RAY GALAXIES
observer	PROFESSOR TOM SHANKS
object	GSGP4X:069
dtcycle	0
cycle	P
ra_targ	14.402917
dec_targ	-27.551389
ra_nom	14.411606405817
dec_nom	-27.557580168051
roll_nom	331.76080459525
revision	2
ontime	9241.6000086069
livetime	9124.5773046745
ontime2	9241.6000086069
ontime3	9241.6000086069
ontime5	9241.6000086069
ontime6	9241.6000086069
ontime7	9241.6000086069
ontime8	9238.3590383679
l2events	398516



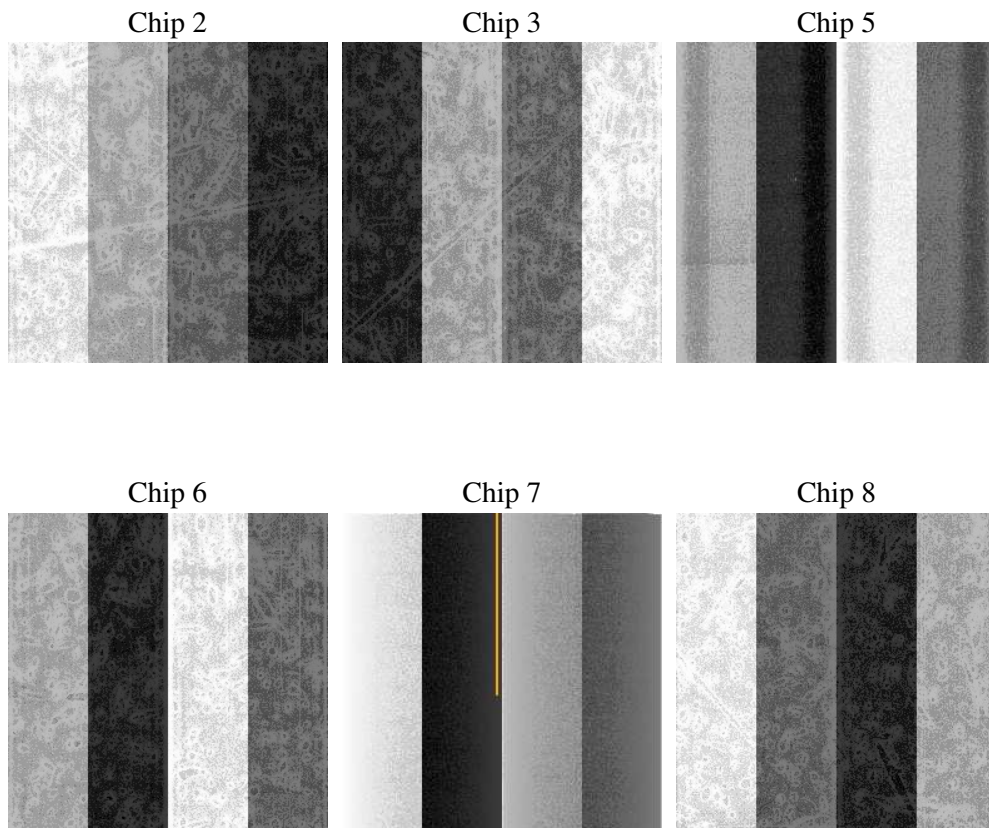
2 OBI

2.1 OBI

2.1.1 Images



2.1.2 Bias



2.1.3 Parameters

obi_num	0
ascdsver	7.6.10
caldbver	3.4.0
date	2007-06-14T08:04:48
revision	2

sched_exp_time	9483.613000
ontime	9241.6000086069
ontime2	9241.6000086069
ontime3	9241.6000086069
ontime5	9241.6000086069
ontime6	9241.6000086069
ontime7	9241.6000086069
ontime8	9238.3590383679
l1events	730133

2.1.4 Events

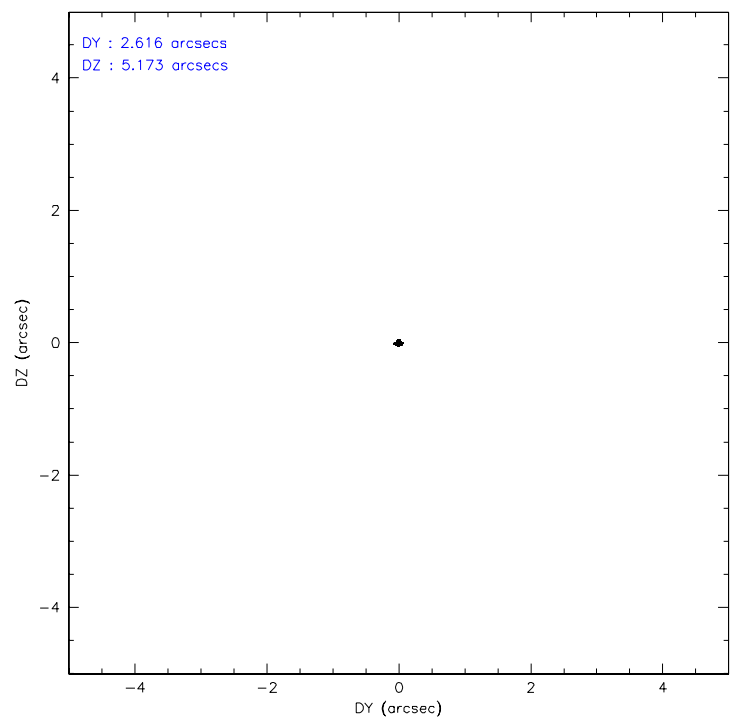
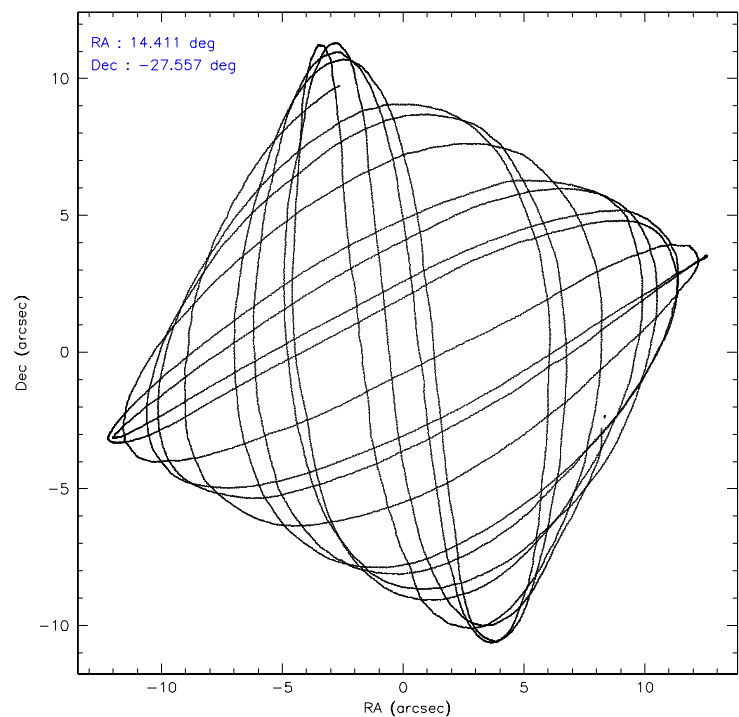
	ccd 2	ccd 3	ccd 5	ccd 6	ccd 7	ccd 8
level 1 events	63734	65124	223176	71105	220760	86234
rejected events	50406	51446	54337	49878	44104	59599
rejected %	79%	78%	24%	70%	19%	69%

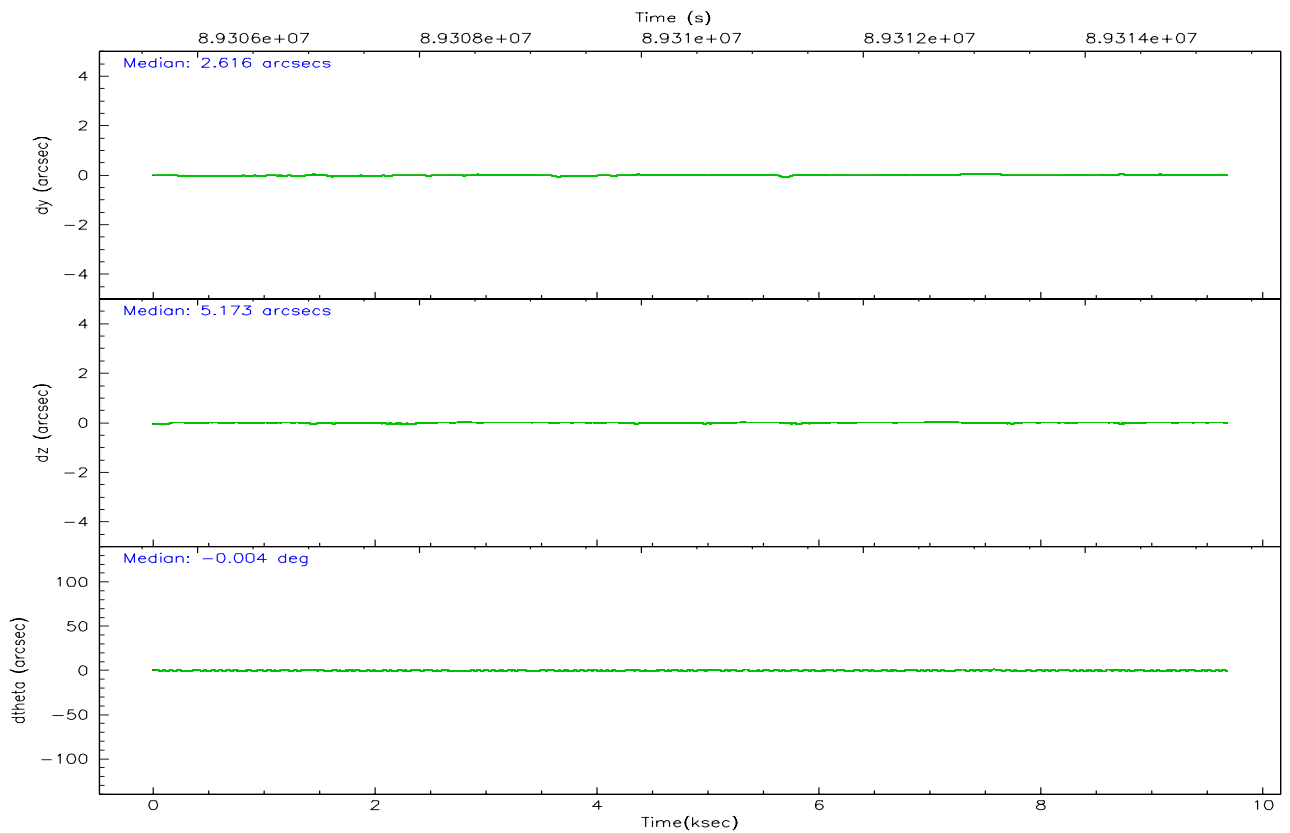
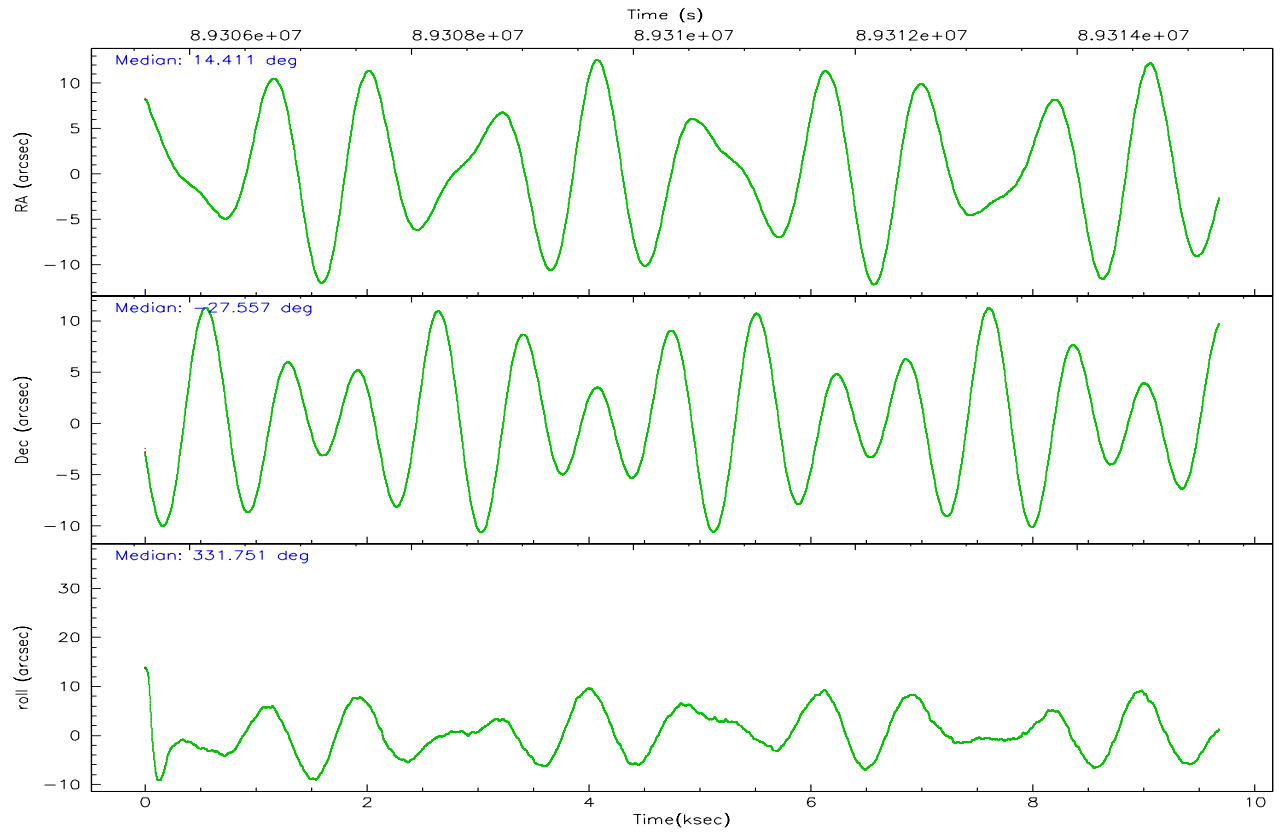
	ccd 2	ccd 3	ccd 5	ccd 6	ccd 7	ccd 8
grade 0 events	8594	8954	30764	15283	20765	15339
	13%	13%	13%	21%	9%	17%
grade 1 events	51	39	228	56	76	91
	0%	0%	0%	0%	0%	0%
grade 2 events	2112	2078	46304	2758	31401	4121
	3%	3%	20%	3%	14%	4%
grade 3 events	677	735	10445	811	13927	1844
	1%	1%	4%	1%	6%	2%
grade 4 events	700	648	10177	858	13856	1743
	1%	0%	4%	1%	6%	2%
grade 5 events	1911	2033	8089	2268	7487	2836
	2%	3%	3%	3%	3%	3%
grade 6 events	1248	1266	71266	1524	96802	3596
	1%	1%	31%	2%	43%	4%
grade 7 events	48441	49371	45903	47547	36446	56664
	76%	75%	20%	66%	16%	65%

2.2 Compared Parameters

Parameter	Planned	Actual	Parameter	Planned	Actual
Instrument	ACIS	ACIS	Obspar format version number	6	6
Detector	ACIS-235678	ACIS-235678	Obspar file type	PREDICTED	ACTUAL
Grating	NONE	NONE	Obspar update status	NONE	UPDATED
Data mode	FAINT	FAINT	Number of optional ACIS chips dropped	0	0
Observation mode	POINTING	POINTING	On-chip summing requested	N	N
Pointing RA	14.380783	14.41160640581712	Subarray requested	NONE	NONE
Pointing Dec	-27.558583	-27.5575801680512	Alternating exposures requested	N	N
Pointing Roll	331.589914	331.7608045952487	Primary exposure time	0.000000	3.2
SIM focus pos (mm)	-0.684267	-0.6828225247311905			
SIM defocus (mm)	0	0.001444936568705701			
SIM translation stage pos (mm)	-190.132523	-190.1400660498719			
SIM translation stage offset (mm)	0	0.00754346686406393			
Observation start time	89305795.184000	89305418.94576401			
Observation start date	2000-10-30T15:08:51	2000-10-30T15:03:38			
Observation end time	89315278.184000	89315593.096148			
Observation end date	2000-10-30T17:46:54	2000-10-30T17:53:13			
Read mode	TIMED	TIMED			

2.3 Aspect



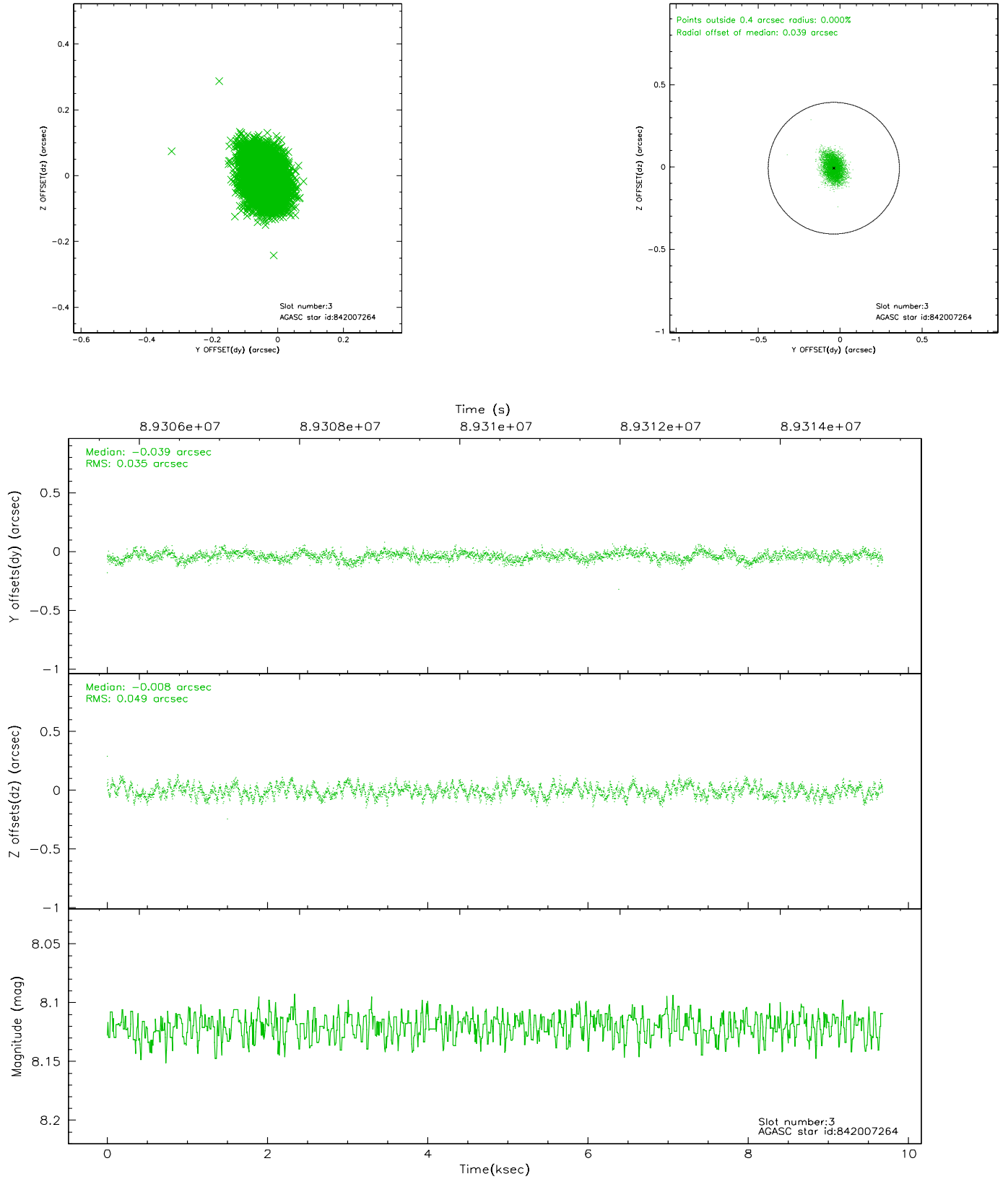


Slot Statistics

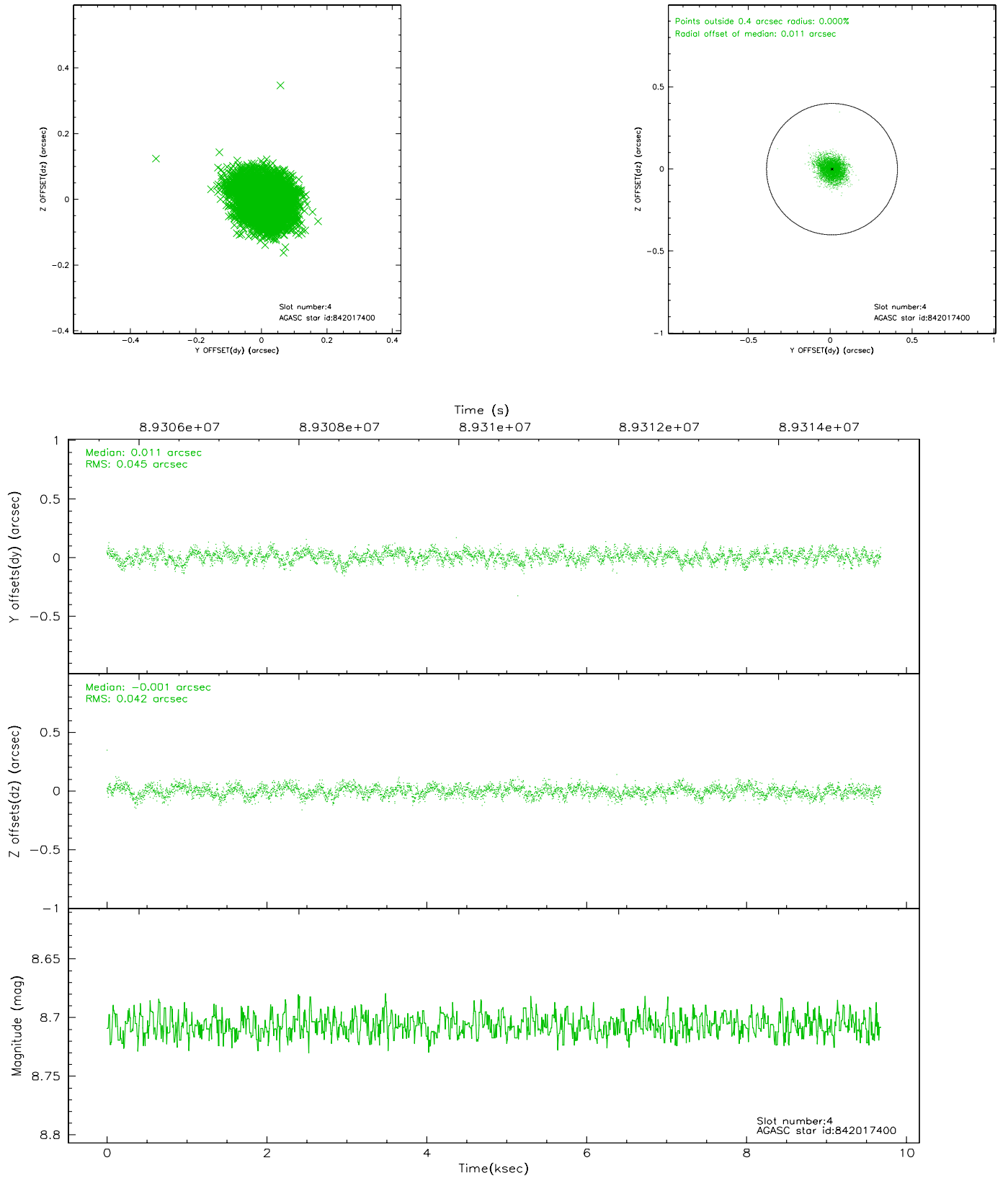
slot	status	id	mag	n_pts	med_dy	med_dz	dr1	dr2	ra	dec	mean_y	mean_z
0	FID	ACIS-S-3	7.36	2362	-0.087	0.012	0.007	0.011	0.000000	0.000000	57.87	-1855.34
1	FID	ACIS-S-4	7.20	2362	-0.029	0.040	0.005	0.009	0.000000	0.000000	2158.10	181.62
2	FID	ACIS-S-5	7.24	2362	0.088	-0.042	0.006	0.009	0.000000	0.000000	-1807.29	175.88
3	GUIDE	842007264	8.12	4723	-0.039	-0.008	0.063	0.103	14.570692	-27.092422	-261.61	1765.57
4	GUIDE	842017400	8.71	4723	0.011	-0.001	0.065	0.105	14.466062	-28.061705	1101.85	-1463.39
5	GUIDE	842015088	9.30	4721	-0.006	-0.020	0.091	0.151	13.933025	-27.893682	-675.84	-1741.27
6	GUIDE	842007696	9.69	4723	0.046	-0.058	0.102	0.167	14.456243	-28.218698	1343.03	-1976.29
7	GUIDE	842015640	10.02	4721	-0.009	0.089	0.118	0.198	14.176649	-27.233495	-1129.57	717.88

2.4 Star Slots

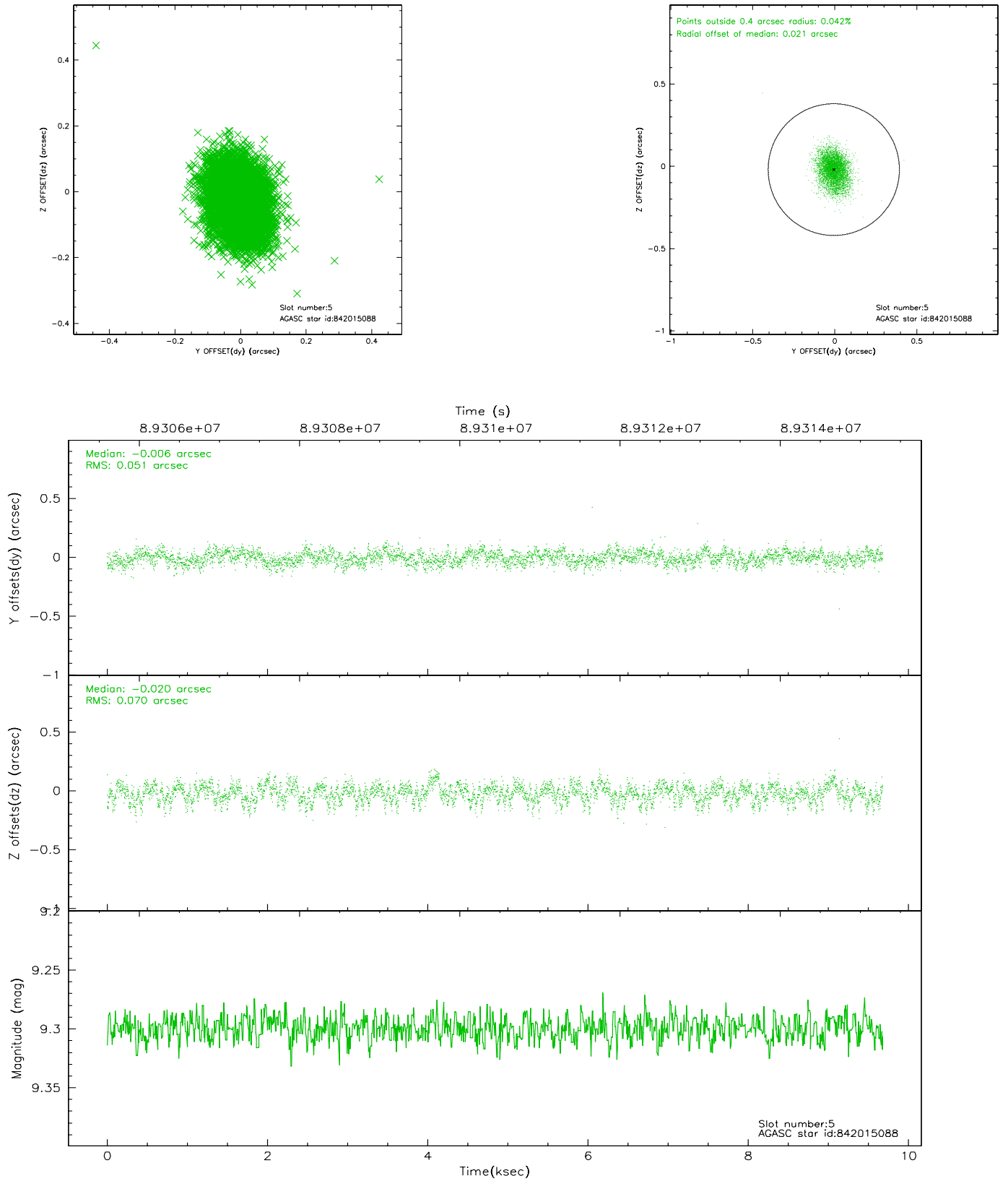
2.4.1 Slot 3



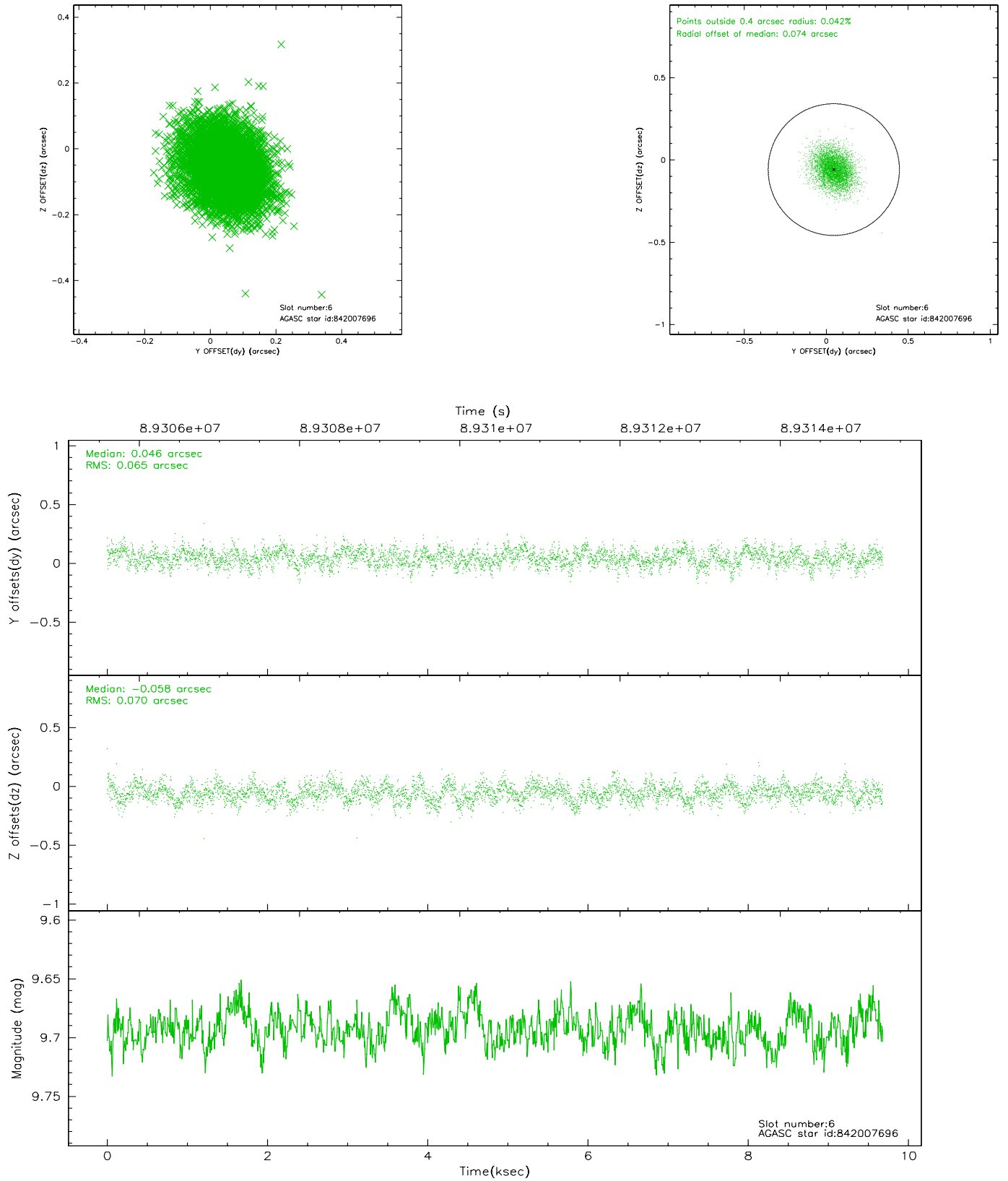
2.4.2 Slot 4



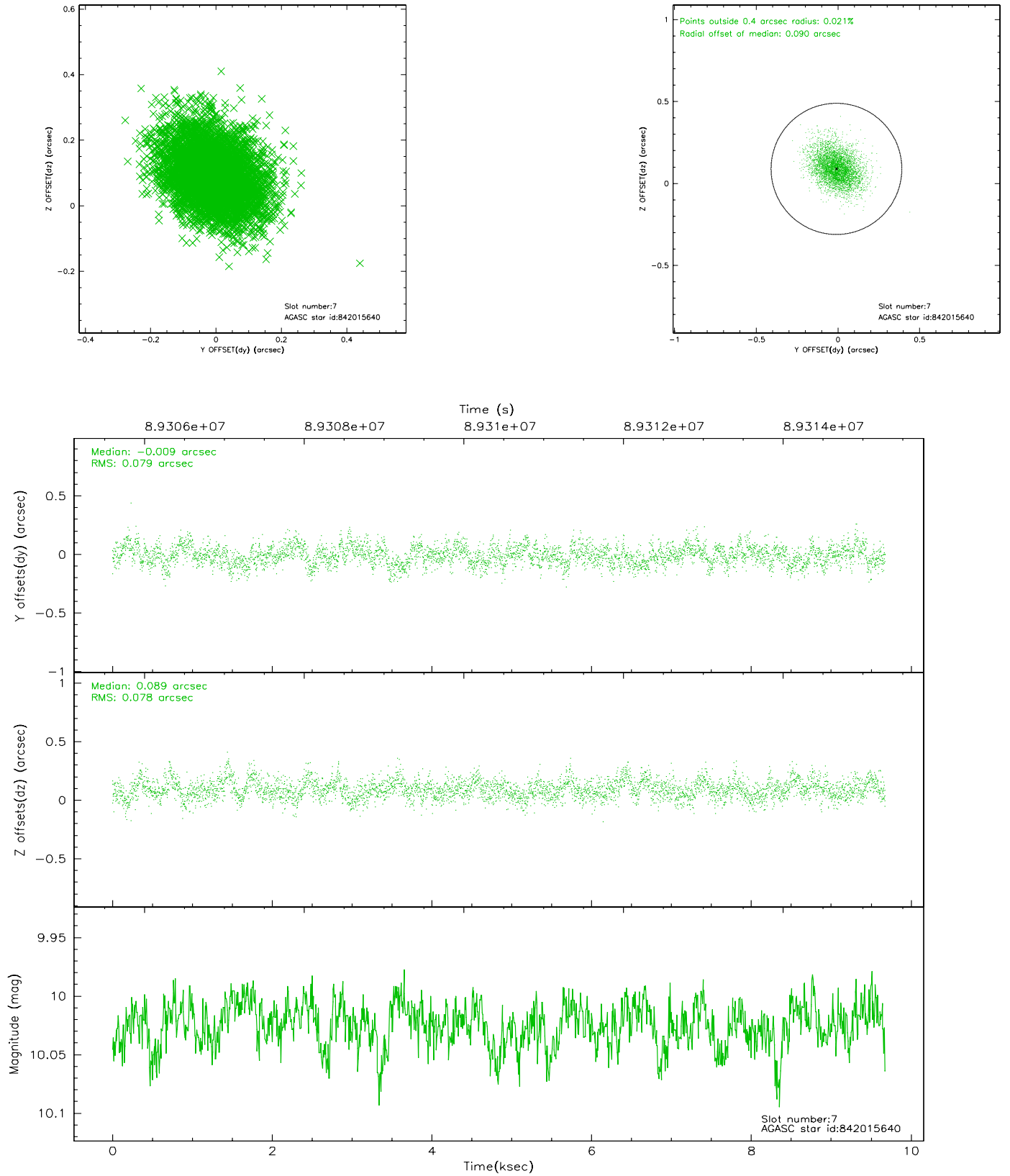
2.4.3 Slot 5



2.4.4 Slot 6

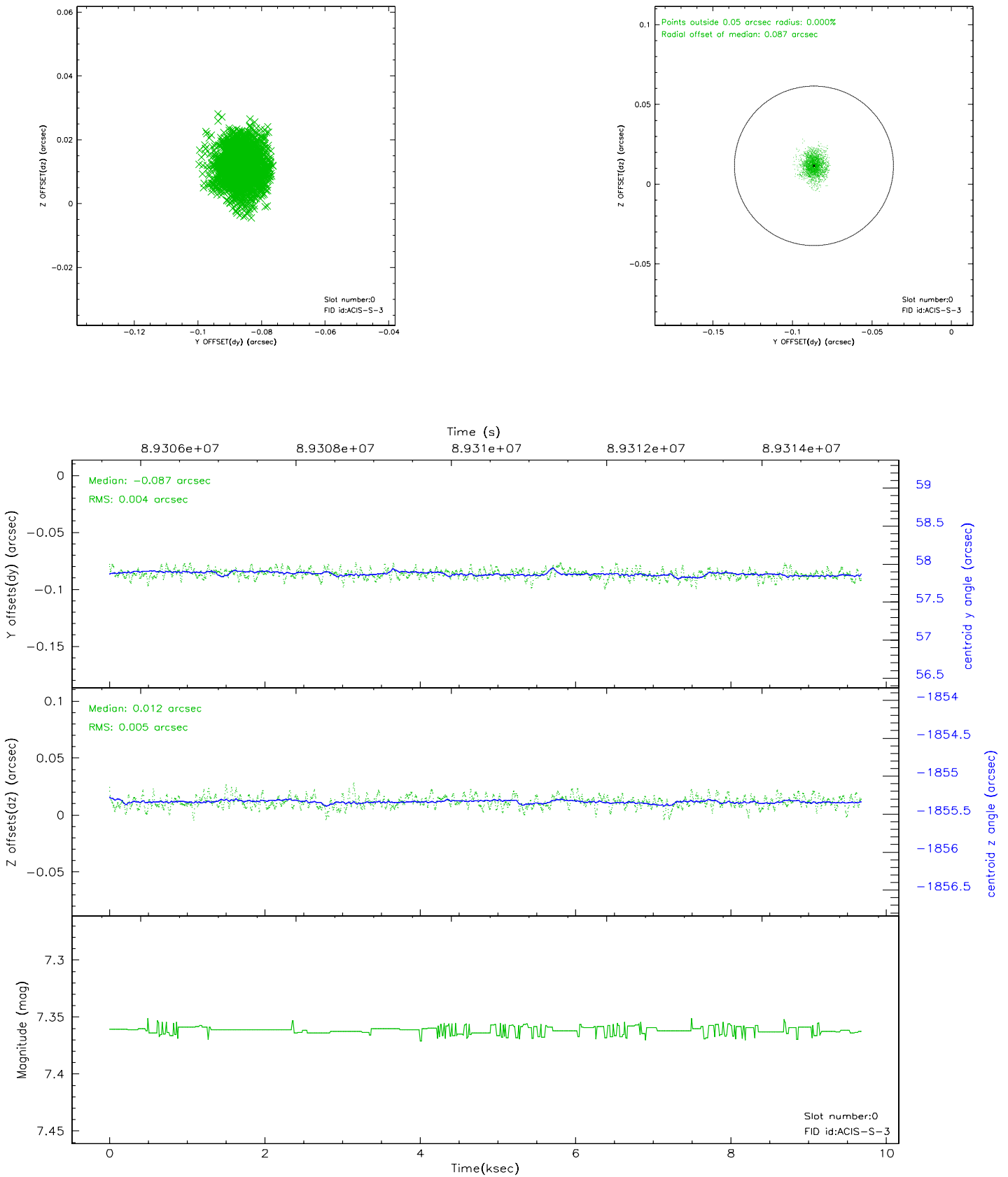


2.4.5 Slot 7

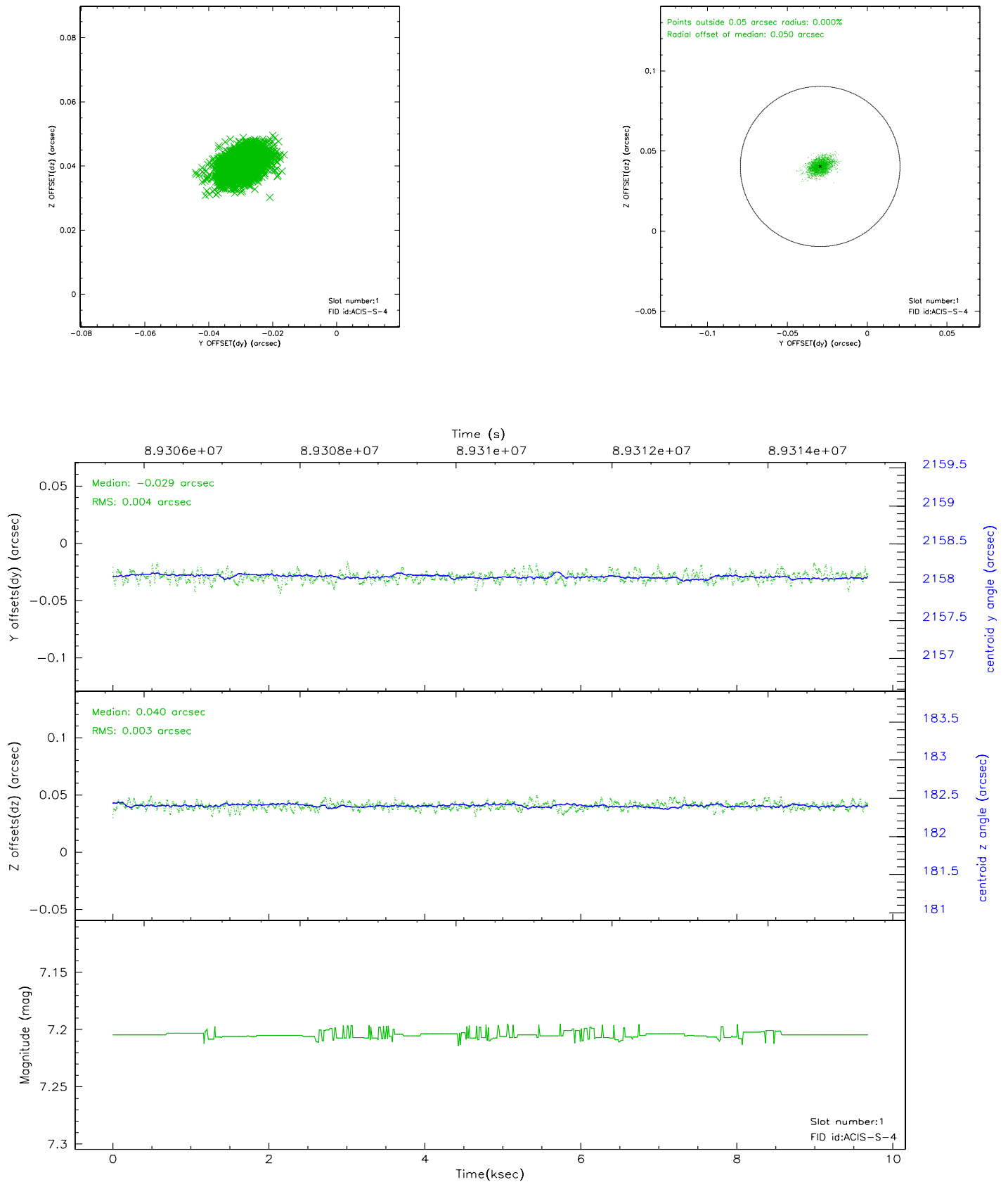


2.5 FID Slots

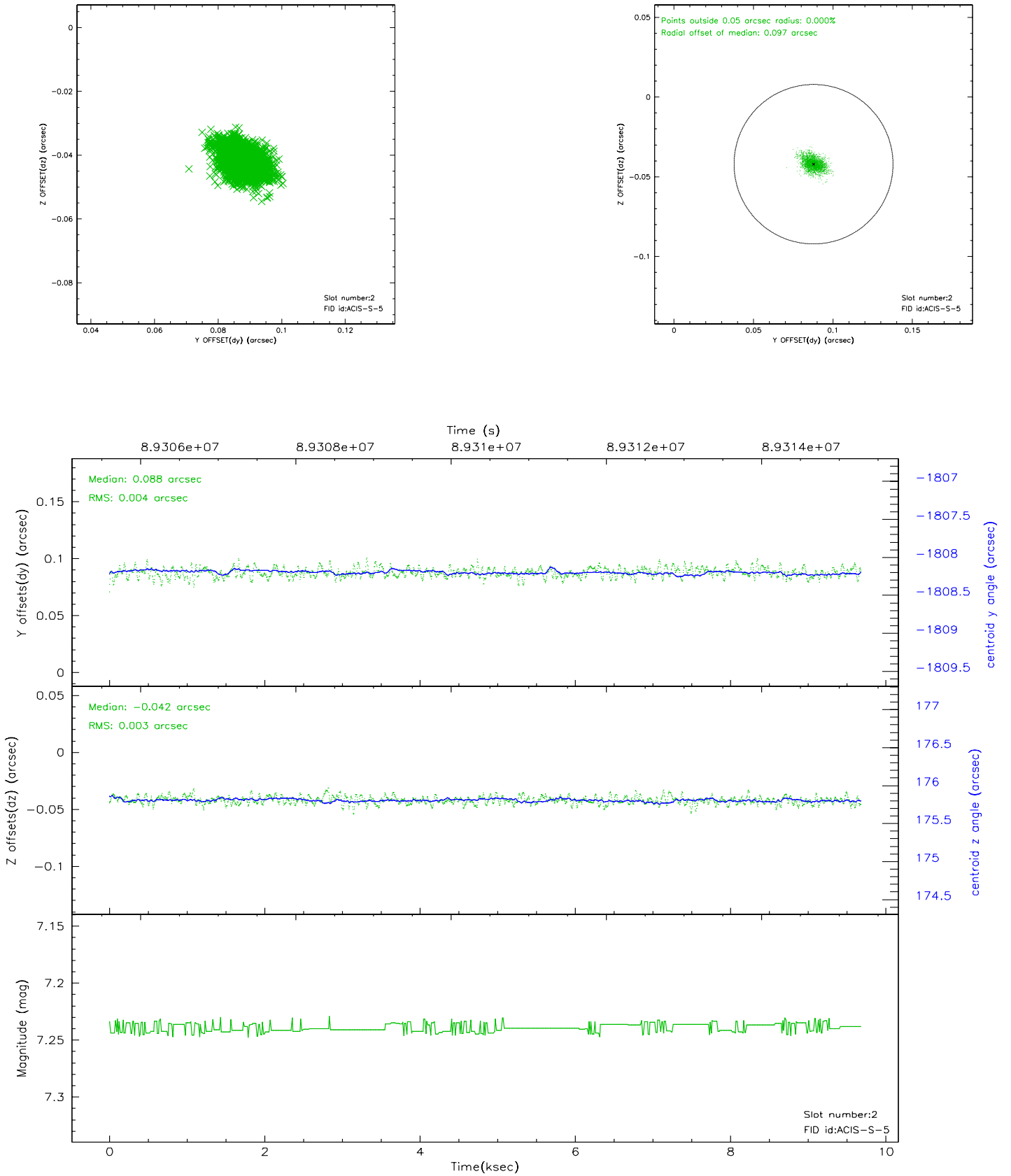
2.5.1 Slot 0



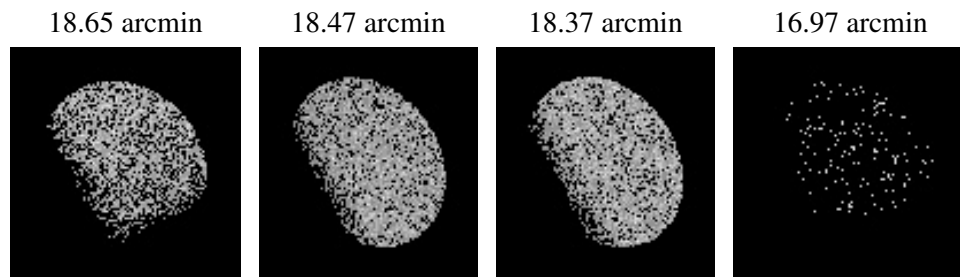
2.5.2 Slot 1



2.5.3 Slot 2



3 Point Sources



A Summary

A.1 Status

V&V Scientist	Beth Sundheim
V&V Date (YYYY-MM-DD)	2007.06.14
V&V Edition	1
V&V Disposition and Status	OK
V&V Charge Time	9.244

A.2 Comments