

V&V Reference Report

L2 ASCDS Version : 7.6.10

Observation 2243 - L2 Version 001
Chandra X-Ray Center

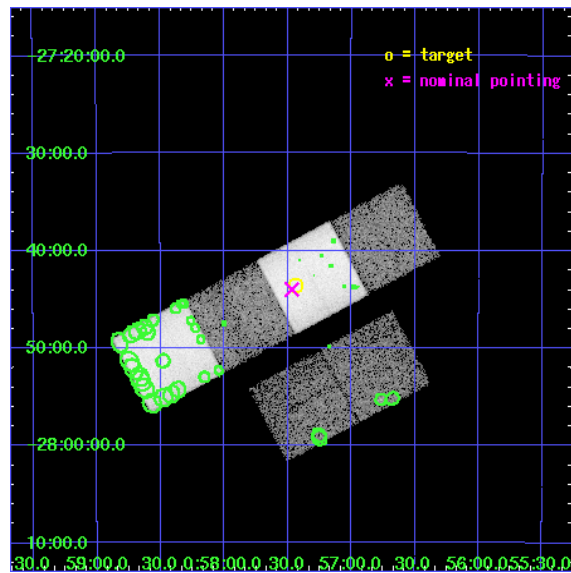
L2 Processing Date : Jun 14 2007

Contents

1	Front	2
2	OBI	3
2.1	OBI	3
2.1.1	Images	3
2.1.2	Bias	3
2.1.3	Parameters	4
2.1.4	Events	4
2.2	Compared Parameters	5
2.3	Aspect	6
2.4	Star Slots	9
2.4.1	Slot 3	9
2.4.2	Slot 4	10
2.4.3	Slot 5	11
2.4.4	Slot 6	12
2.4.5	Slot 7	13
2.5	FID Slots	14
2.5.1	Slot 0	14
2.5.2	Slot 1	15
2.5.3	Slot 2	16
3	Point Sources	17
A	Summary	18
A.1	Status	18
A.2	Comments	18

1 Front

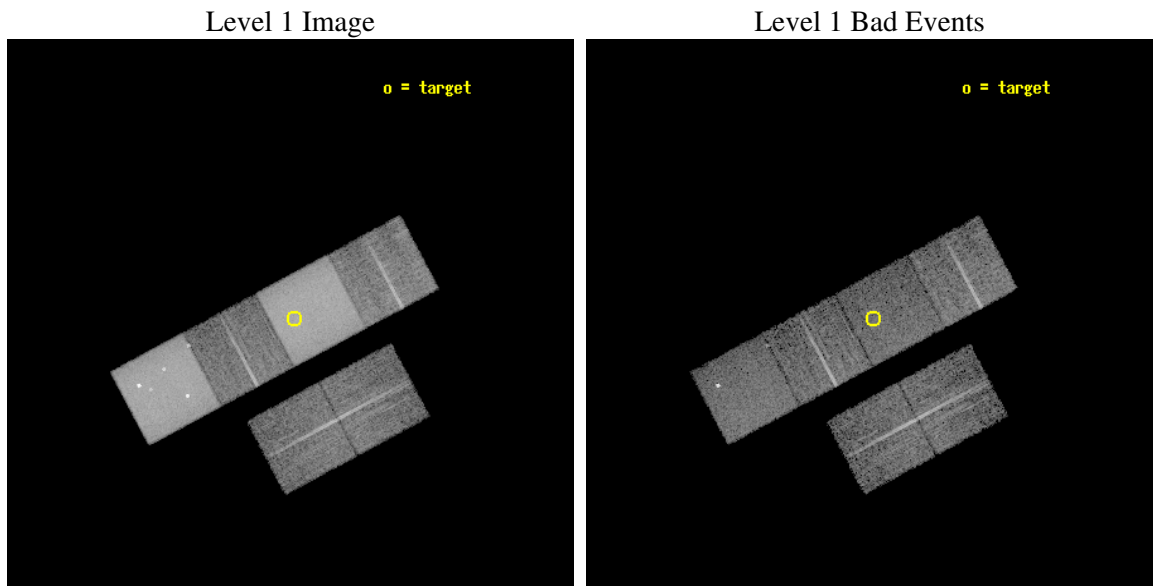
seq_num	900070
obs_id	2243
title	THE NATURE OF NARROW-LINE, FIR-LUMINOUS, X-RAY GALAXIES
observer	PROFESSOR TOM SHANKS
object	GSGP4X:057
dtcycle	0
cycle	P
ra_targ	14.358333
dec_targ	-27.727222
ra_nom	14.367006129308
dec_nom	-27.733351527191
roll_nom	331.90463354014
revision	2
ontime	8960.0000083447
livetime	8846.5430931747
ontime2	8960.0000083447
ontime3	8960.0000083447
ontime5	8960.0000083447
ontime6	8960.0000083447
ontime7	8960.0000083447
ontime8	8956.7590381056
l2events	292968



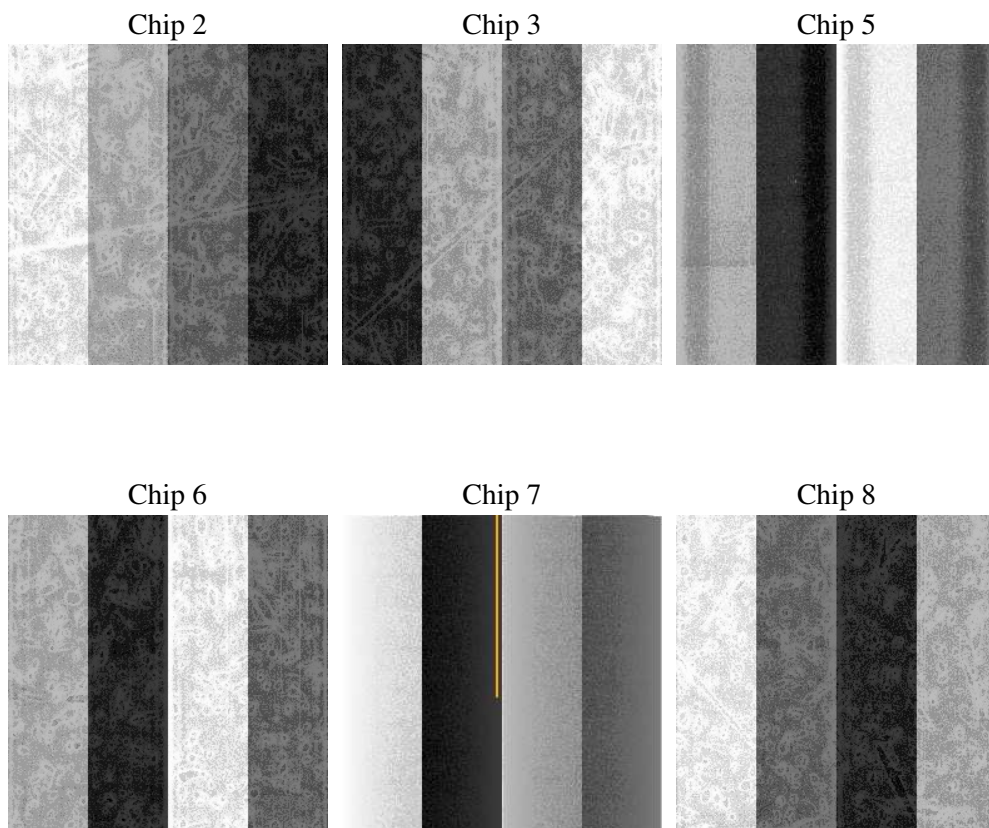
2 OBI

2.1 OBI

2.1.1 Images



2.1.2 Bias



2.1.3 Parameters

obi_num	0
ascdsver	7.6.10
caldsver	3.4.0
date	2007-06-14T07:56:41
revision	2

sched_exp_time	9200.000000
ontime	8960.0000083447
ontime2	8960.0000083447
ontime3	8960.0000083447
ontime5	8960.0000083447
ontime6	8960.0000083447
ontime7	8960.0000083447
ontime8	8956.7590381056
l1events	596888

2.1.4 Events

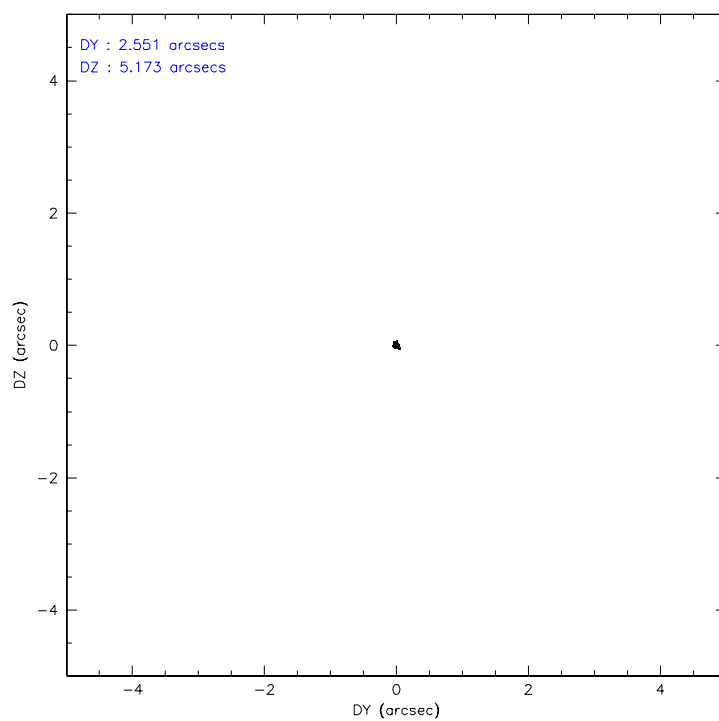
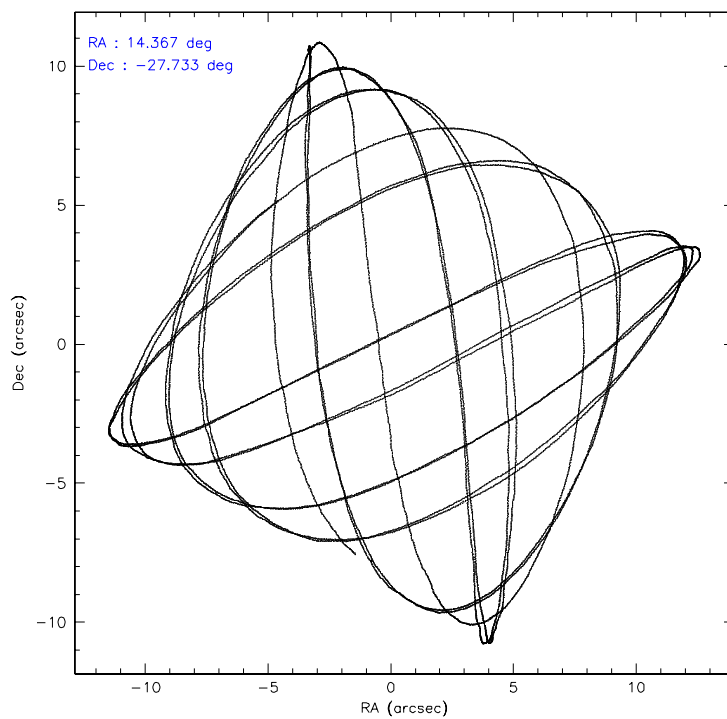
	ccd 2	ccd 3	ccd 5	ccd 6	ccd 7	ccd 8
level 1 events	55012	54670	179341	59345	175019	73501
rejected events	46750	46269	48494	47430	40783	55165
rejected %	84%	84%	27%	79%	23%	75%

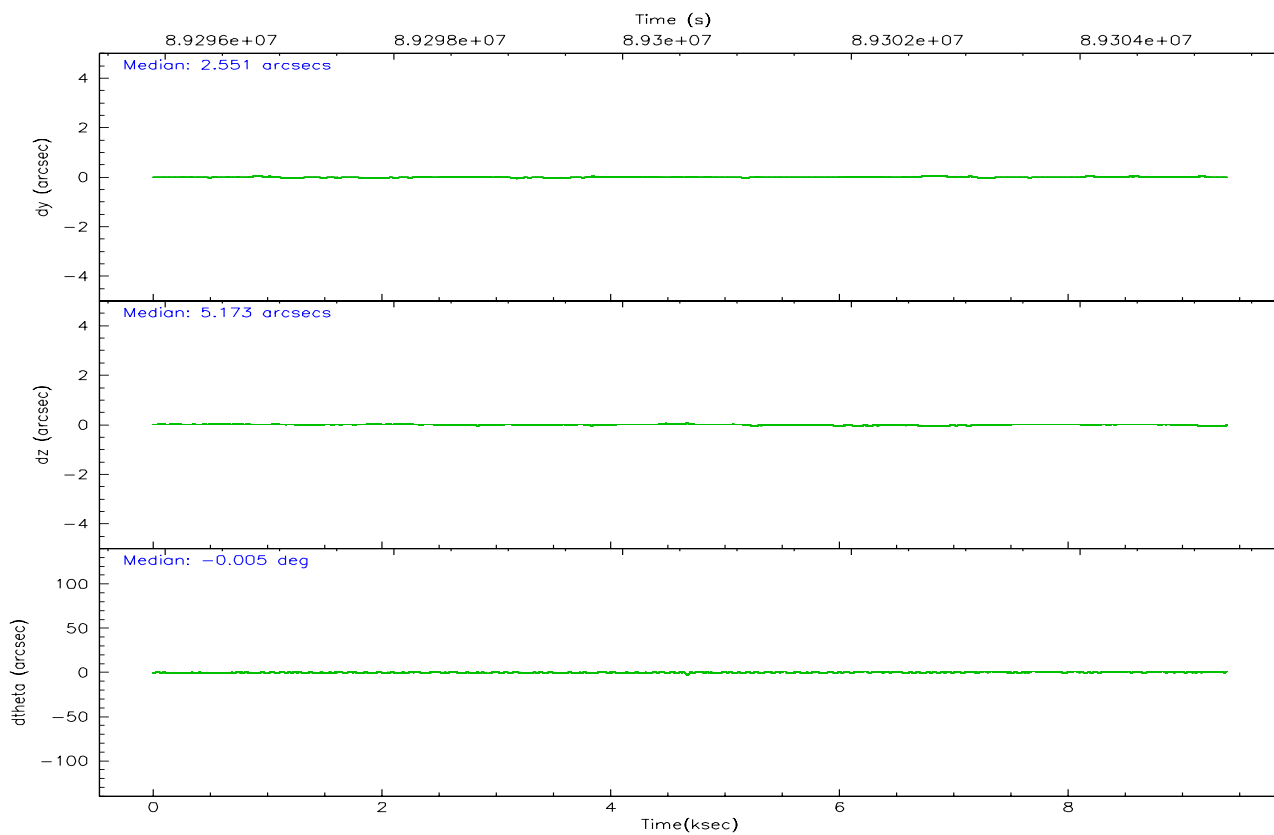
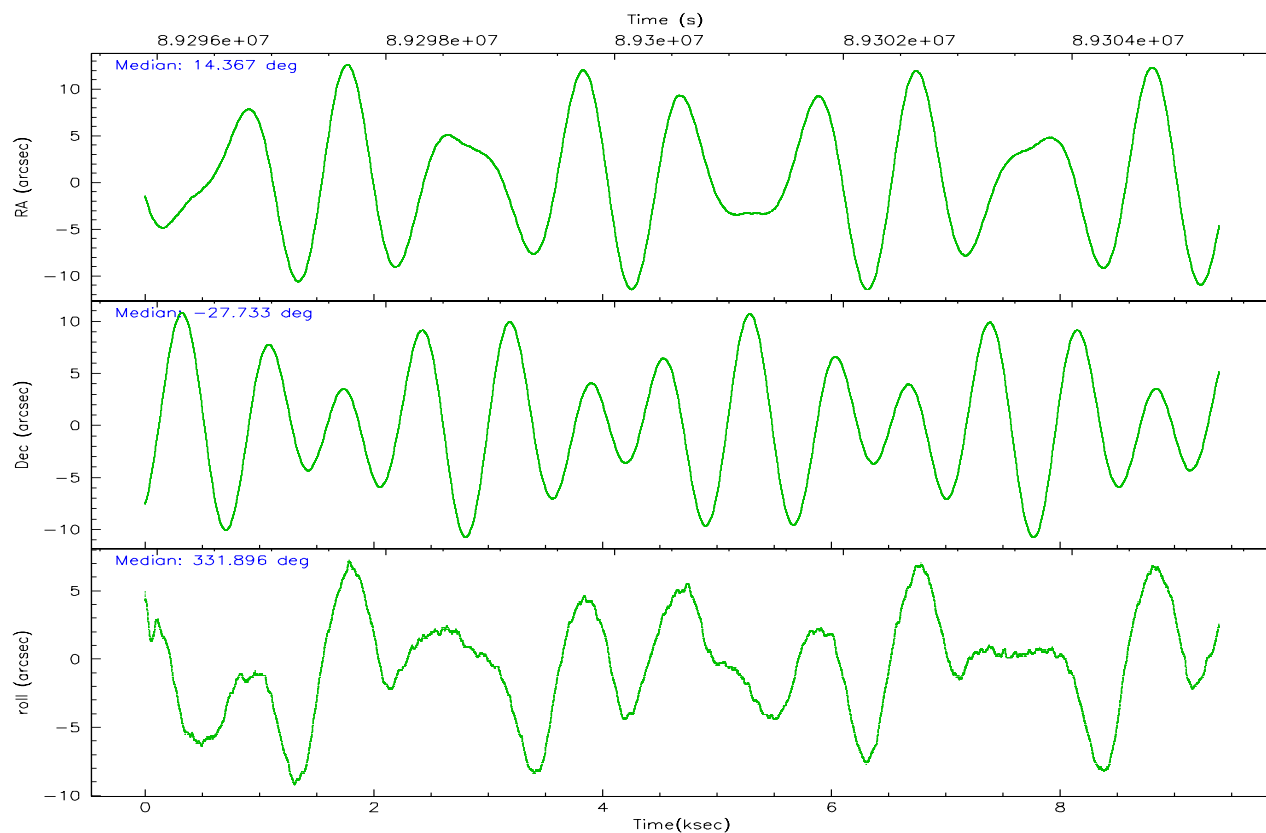
	ccd 2	ccd 3	ccd 5	ccd 6	ccd 7	ccd 8
grade 0 events	4487	4687	23874	7664	16187	8329
	8%	8%	13%	12%	9%	11%
grade 1 events	37	34	188	44	68	61
	0%	0%	0%	0%	0%	0%
grade 2 events	1513	1420	36220	1728	24341	3327
	2%	2%	20%	2%	13%	4%
grade 3 events	598	588	7943	684	10966	1678
	1%	1%	4%	1%	6%	2%
grade 4 events	579	623	7679	630	10706	1525
	1%	1%	4%	1%	6%	2%
grade 5 events	1828	1958	7322	2186	7021	2689
	3%	3%	4%	3%	4%	3%
grade 6 events	1088	1089	55227	1220	72146	3480
	1%	1%	30%	2%	41%	4%
grade 7 events	44882	44271	40888	45189	33584	52412
	81%	80%	22%	76%	19%	71%

2.2 Compared Parameters

Parameter	Planned	Actual	Parameter	Planned	Actual
Instrument	ACIS	ACIS	Obspar format version number	6	6
Detector	ACIS-235678	ACIS-235678	Obspar file type	PREDICTED	ACTUAL
Grating	NONE	NONE	Obspar update status	NONE	UPDATED
Data mode	FAINT	FAINT	Number of optional ACIS chips dropped	0	0
Observation mode	POINTING	POINTING	On-chip summing requested	N	N
Pointing RA	14.336190	14.36700612930768	Subarray requested	NONE	NONE
Pointing Dec	-27.734467	-27.7333515271913	Alternating exposures requested	N	N
Pointing Roll	331.733666	331.9046335401421	Primary exposure time	0.000000	3.2
SIM focus pos (mm)	-0.684267	-0.6828225247311905			
SIM defocus (mm)	0	0.001444936568705701			
SIM translation stage pos (mm)	-190.132523	-190.1400660498719			
SIM translation stage offset (mm)	0	0.00754346686406393			
Observation start time	89296085.184000	89295709.120397			
Observation start date	2000-10-30T12:27:01	2000-10-30T12:21:49			
Observation end time	89305285.184000	89305418.94576401			
Observation end date	2000-10-30T15:00:21	2000-10-30T15:03:38			
Read mode	TIMED	TIMED			

2.3 Aspect



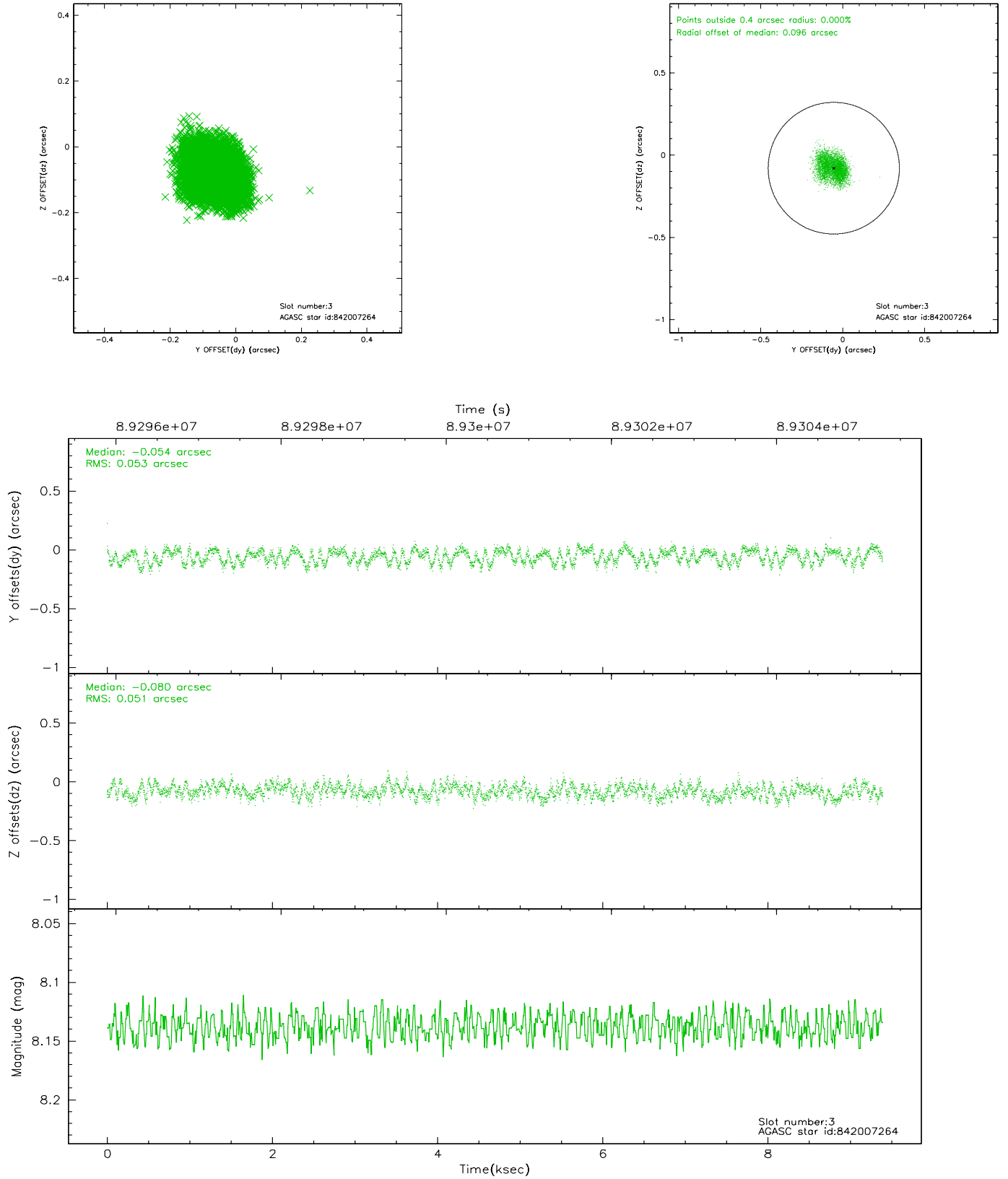


Slot Statistics

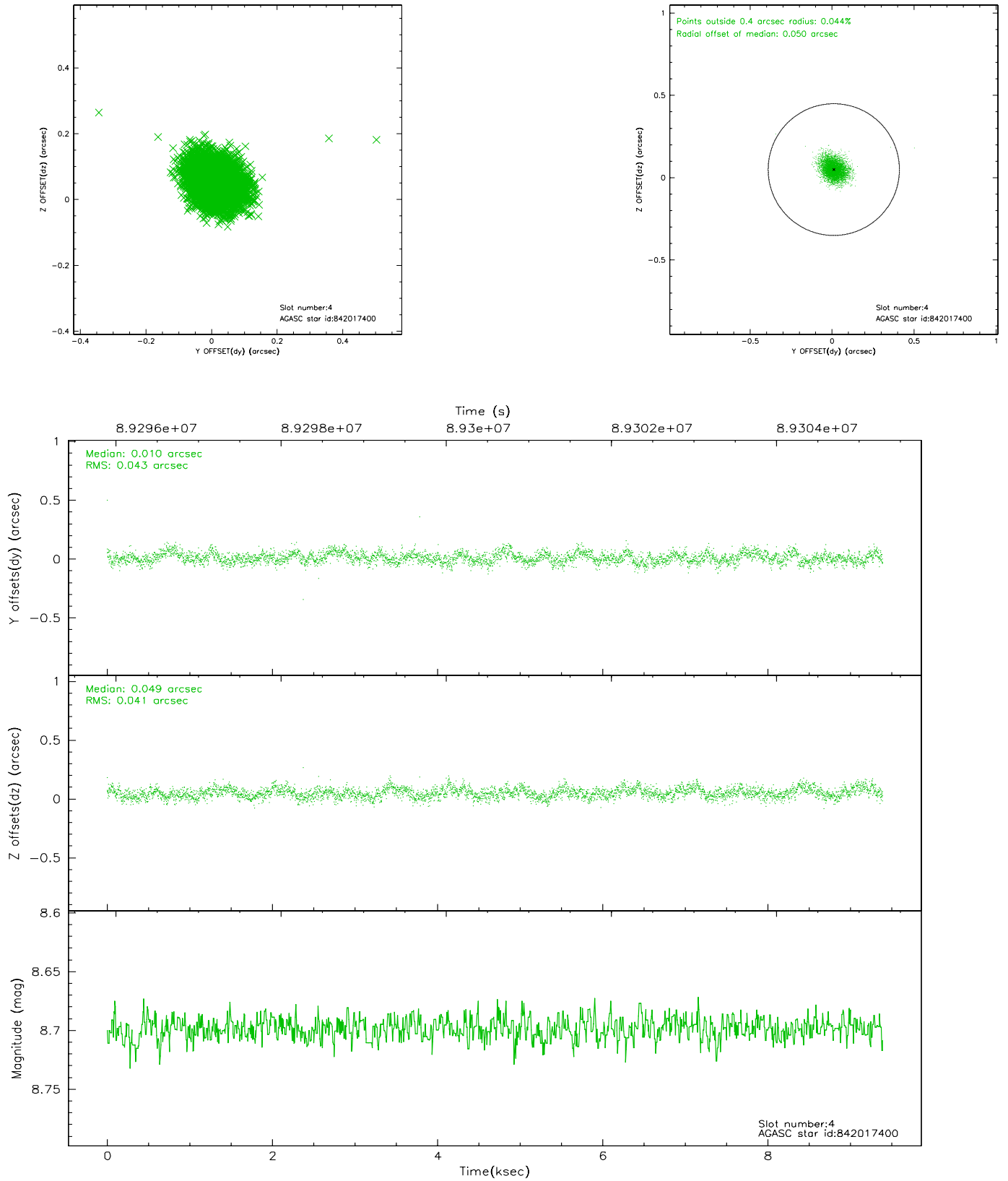
slot	status	id	mag	n_pts	med_dy	med_dz	dr1	dr2	ra	dec	mean_y	mean_z
0	FID	ACIS-S-2	7.11	2291	-0.027	0.019	0.011	0.017	0.000000	0.000000	-755.18	-1726.28
1	FID	ACIS-S-4	7.21	2290	-0.049	0.008	0.014	0.022	0.000000	0.000000	2157.79	181.65
2	FID	ACIS-S-5	7.24	2291	0.044	-0.018	0.010	0.016	0.000000	0.000000	-1807.24	175.88
3	GUIDE	842007264	8.14	4582	-0.054	-0.080	0.080	0.121	14.570692	-27.092422	-431.13	2391.06
4	GUIDE	842017400	8.70	4583	0.010	0.049	0.062	0.102	14.466062	-28.061705	923.00	-841.54
5	GUIDE	842015088	9.31	4582	-0.062	0.071	0.079	0.127	13.933025	-27.893682	-855.50	-1114.29
6	GUIDE	842008736	10.38	4579	0.104	-0.019	0.162	0.253	14.870220	-27.799337	1611.58	596.56
7	GUIDE	842007696	9.69	4581	0.010	-0.023	0.092	0.150	14.456243	-28.218698	1163.18	-1354.80

2.4 Star Slots

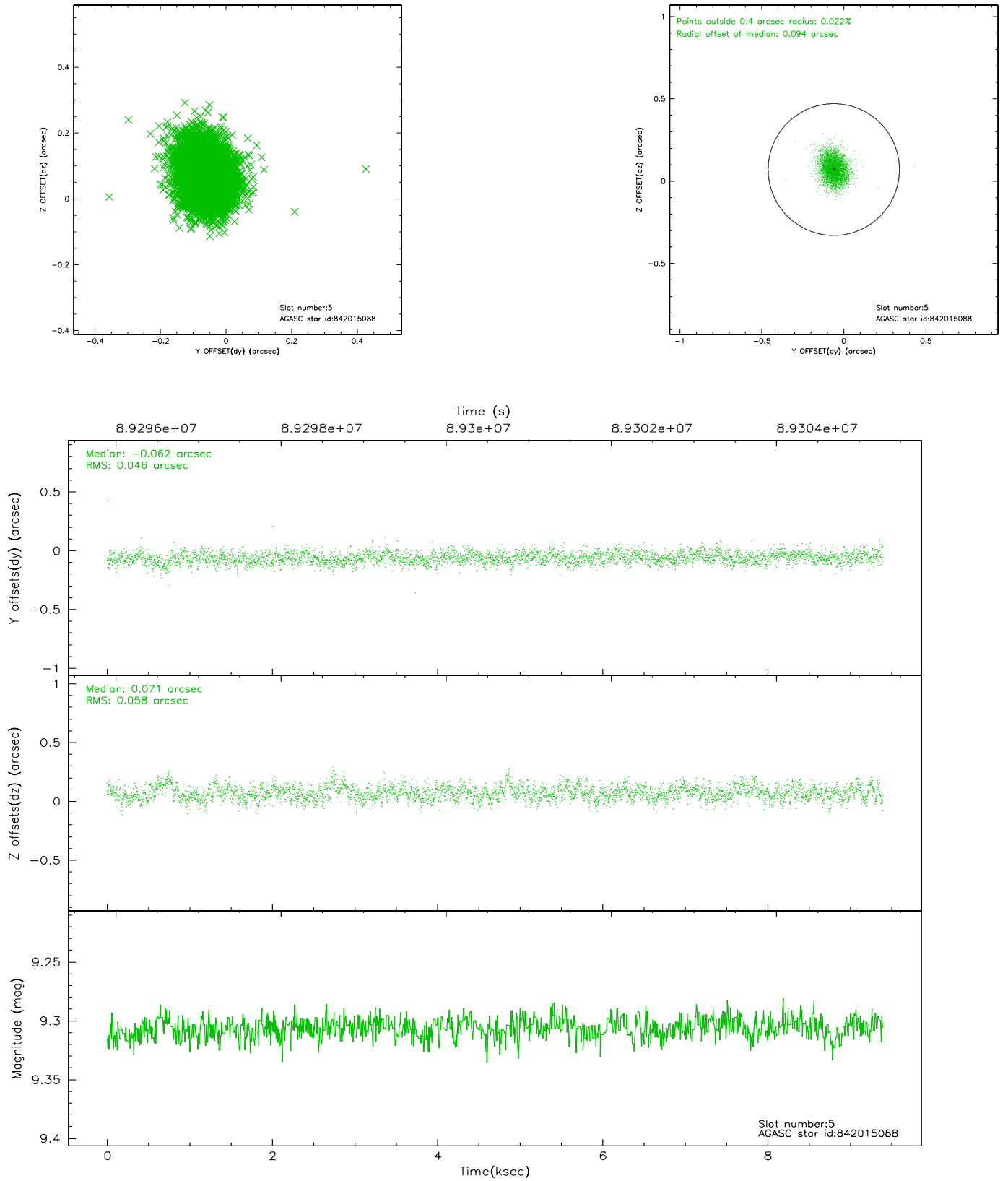
2.4.1 Slot 3



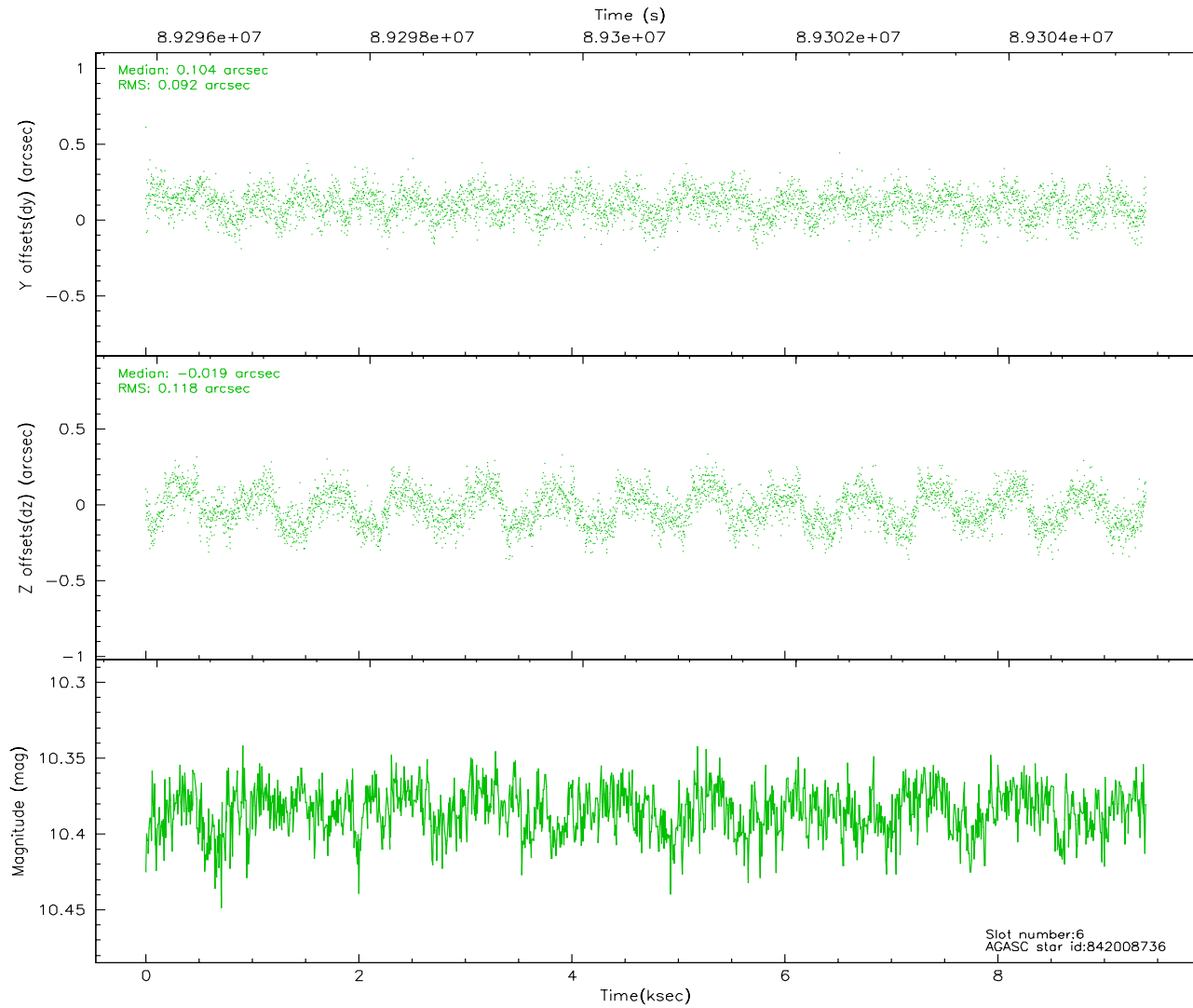
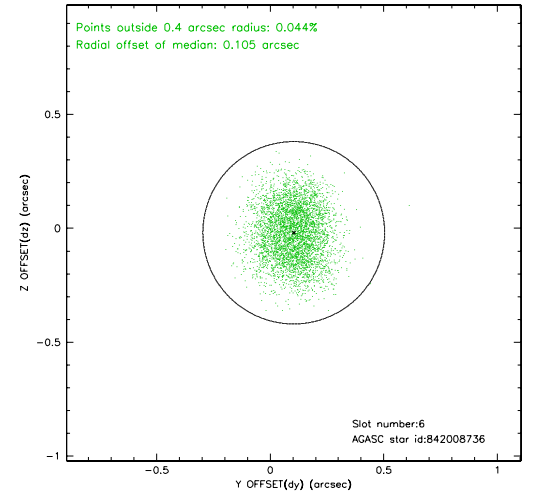
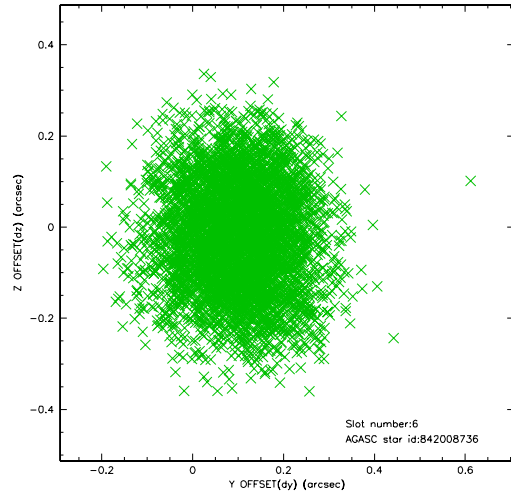
2.4.2 Slot 4



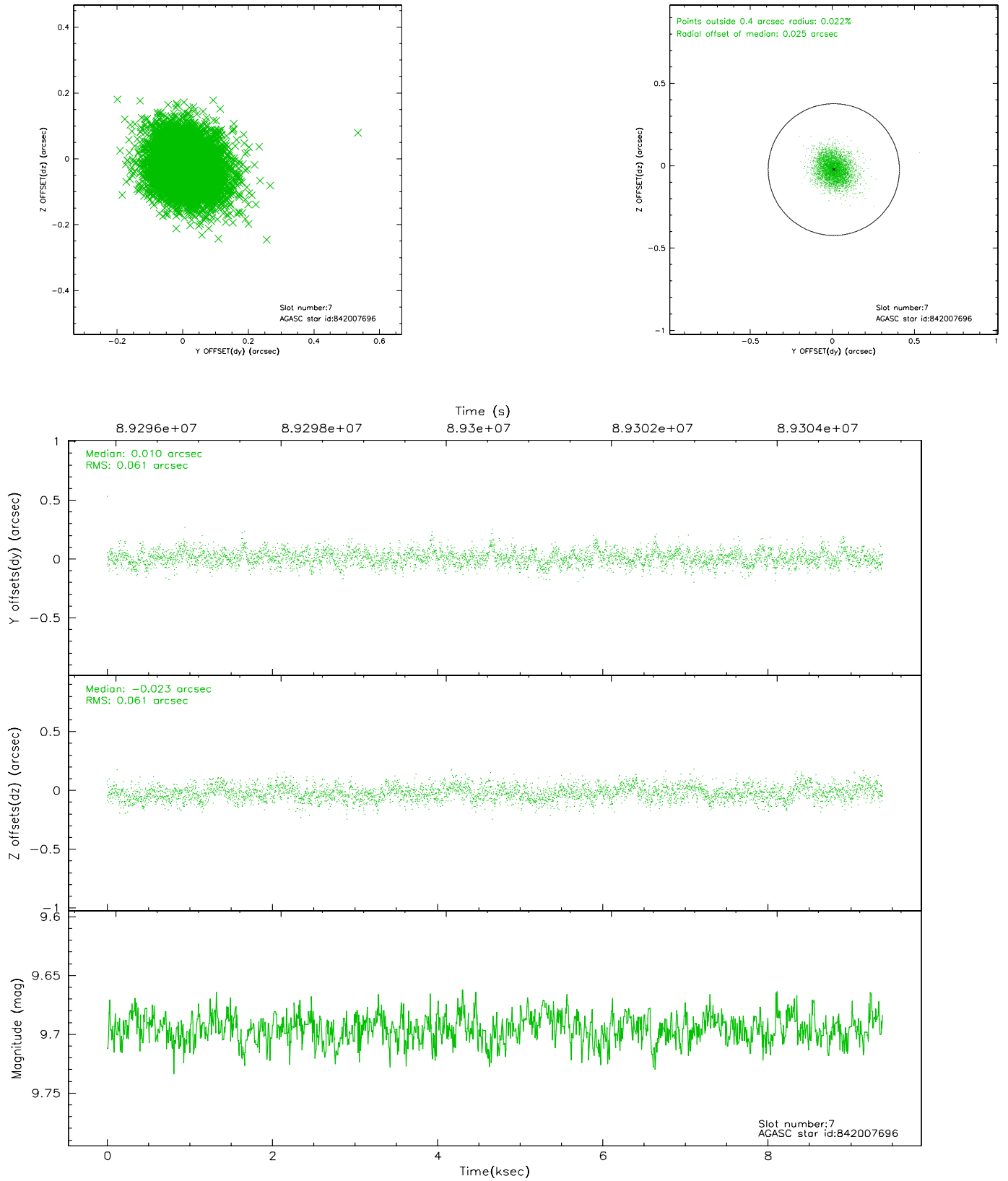
2.4.3 Slot 5



2.4.4 Slot 6

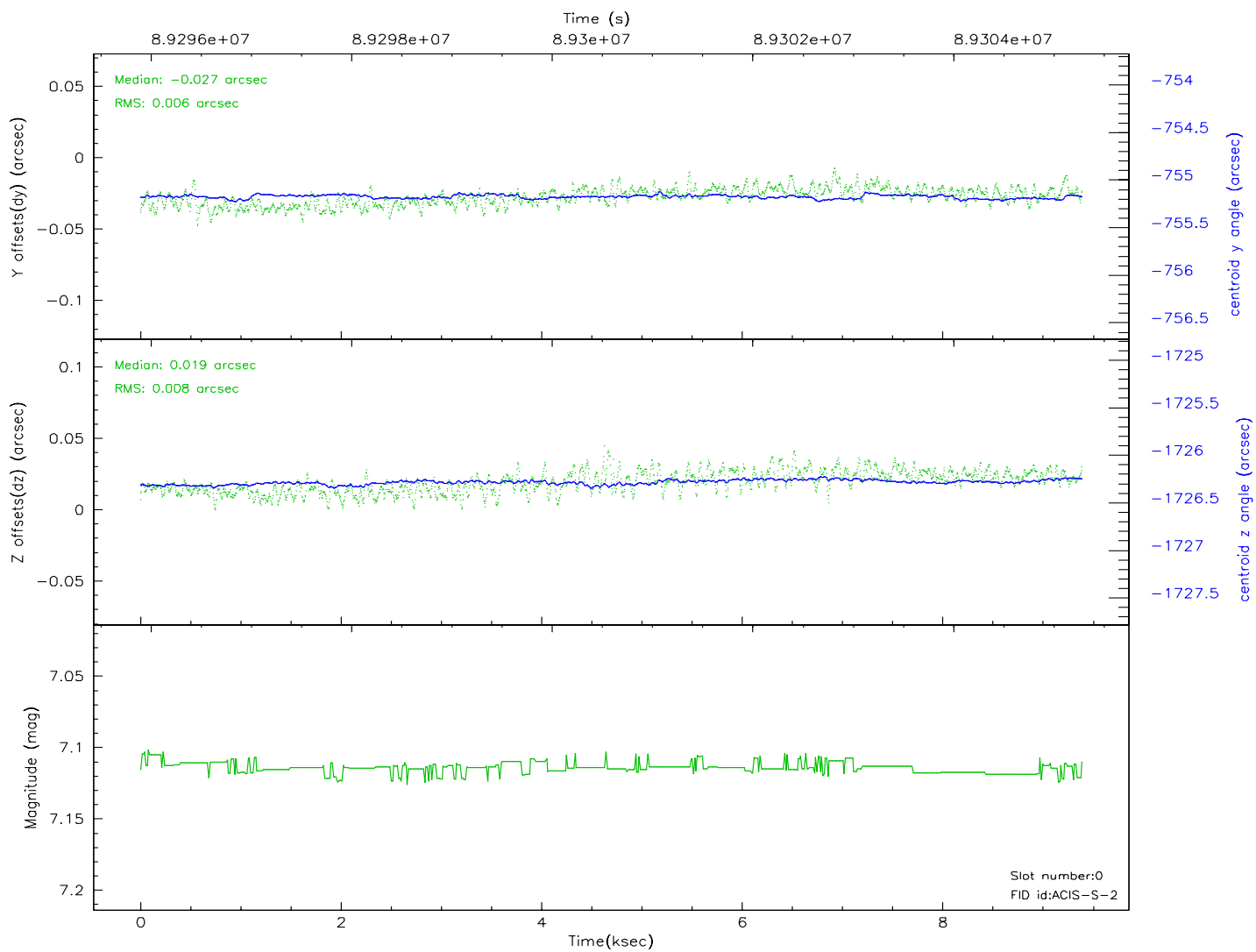
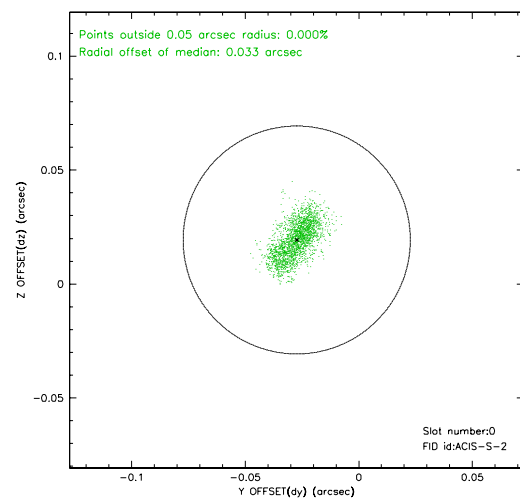
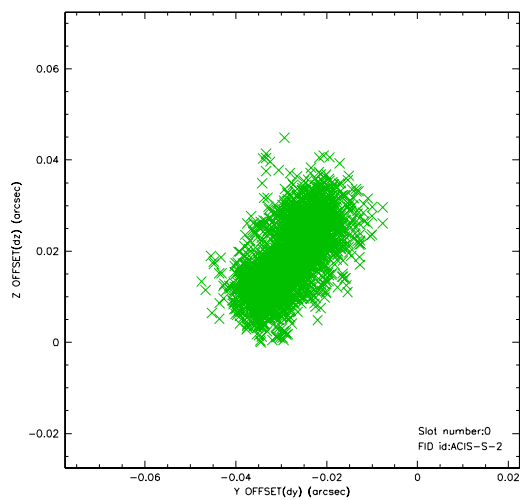


2.4.5 Slot 7

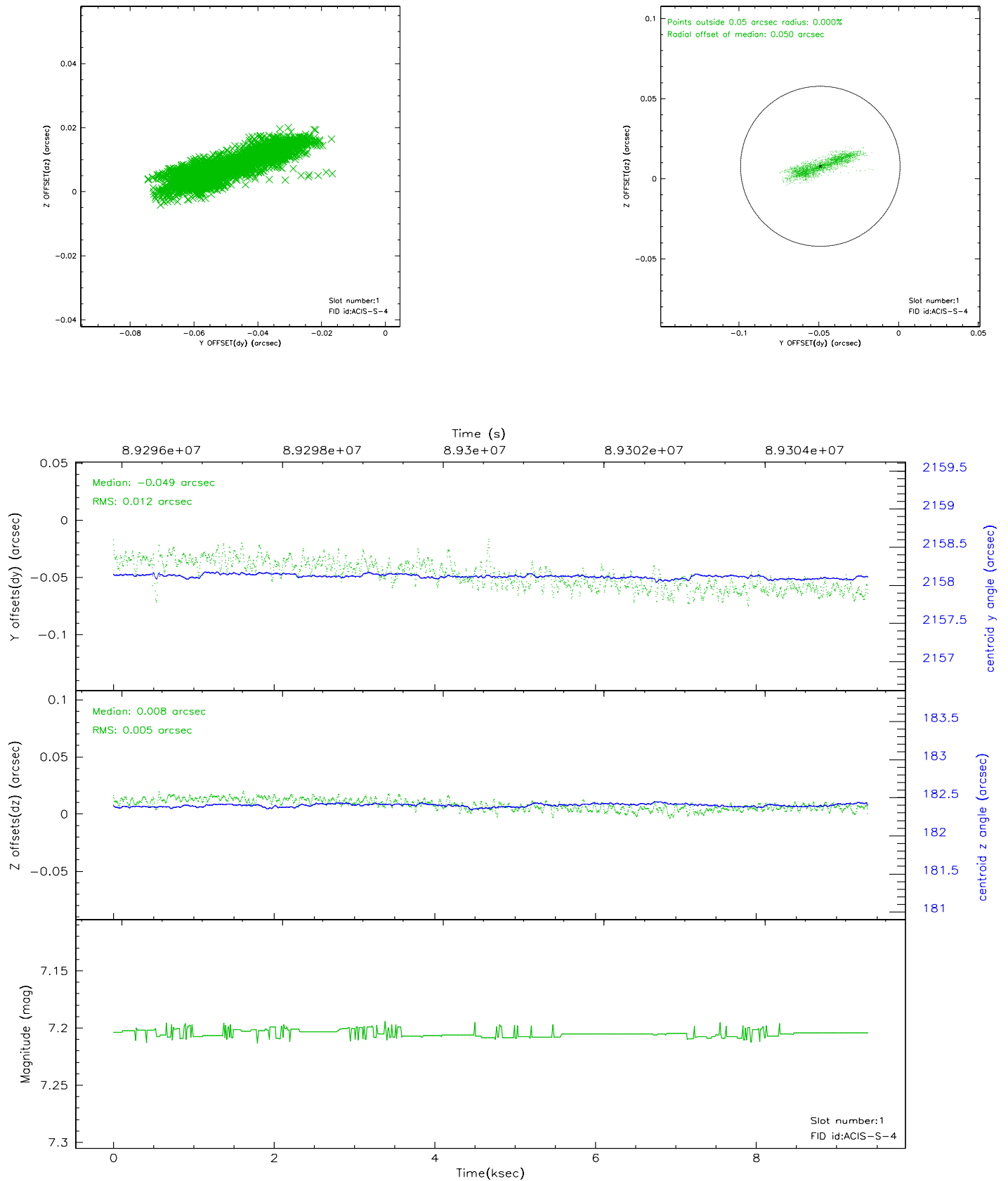


2.5 FID Slots

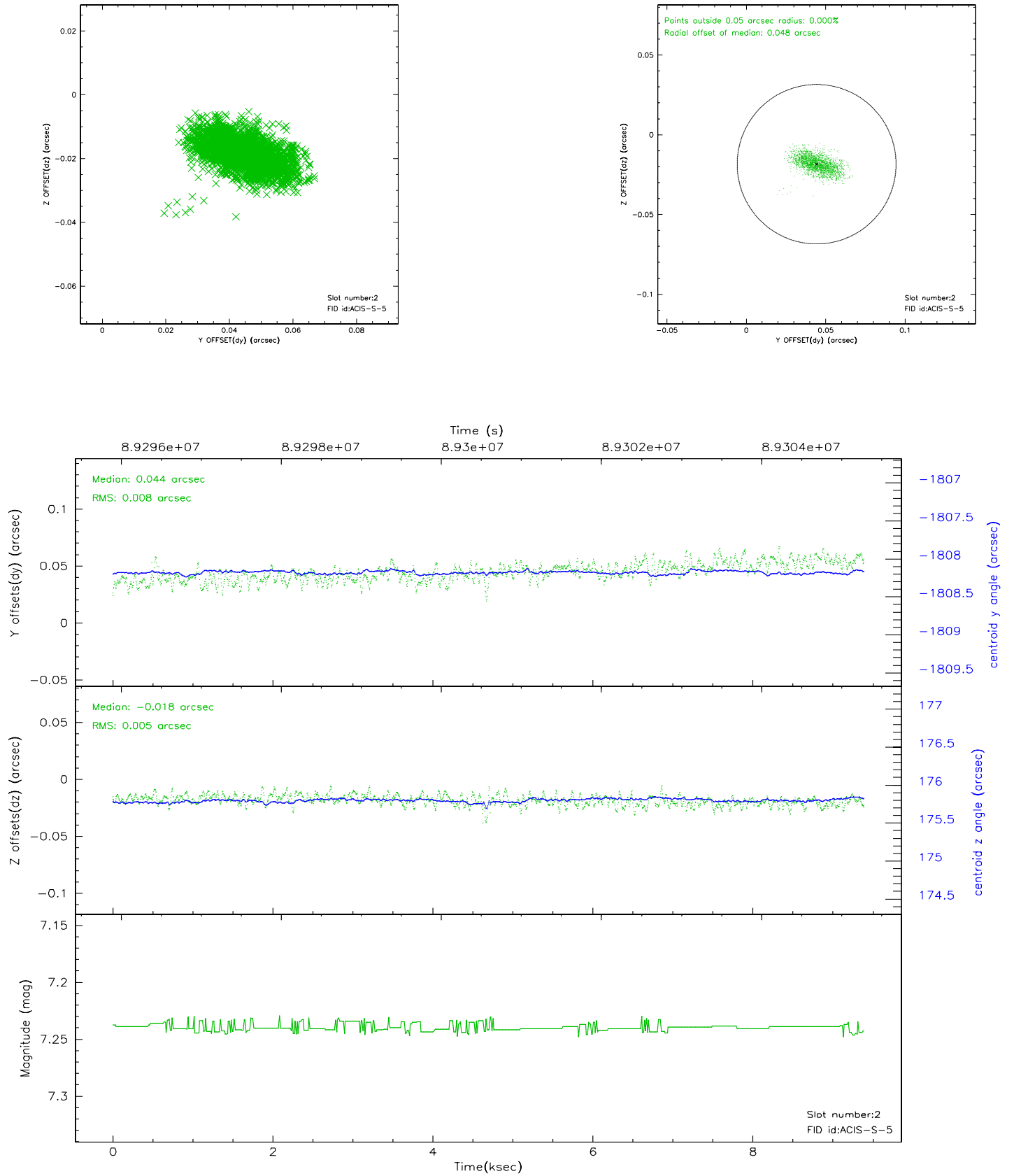
2.5.1 Slot 0



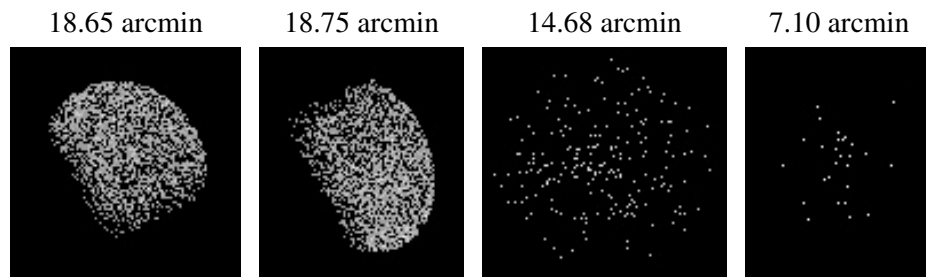
2.5.2 Slot 1



2.5.3 Slot 2



3 Point Sources



A Summary

A.1 Status

V&V Scientist	Beth Sundheim
V&V Date (YYYY-MM-DD)	2007.06.14
V&V Edition	1
V&V Disposition and Status	OK
V&V Charge Time	8.963

A.2 Comments