

V&V Reference Report

L2 ASCDS Version : 7.6.10

Observation 2242 - L2 Version 001
Chandra X-Ray Center

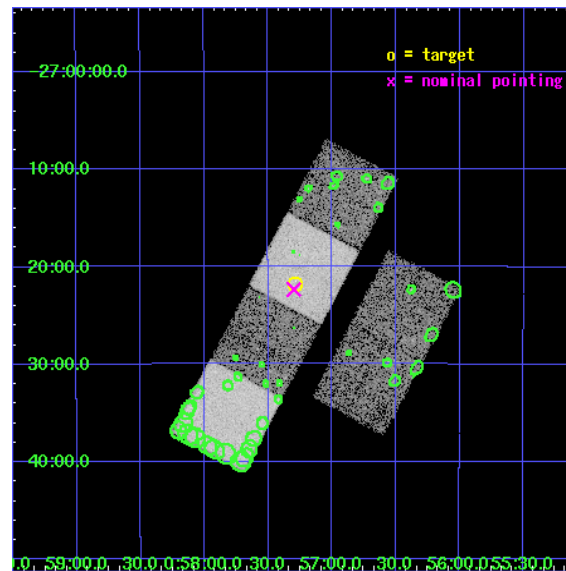
L2 Processing Date : Jun 20 2007

Contents

1	Front	2
2	OBI	3
2.1	OBI	3
2.1.1	Images	3
2.1.2	Bias	3
2.1.3	Parameters	4
2.1.4	Events	4
2.2	Compared Parameters	5
2.3	Aspect	6
2.4	Star Slots	9
2.4.1	Slot 3	9
2.4.2	Slot 4	10
2.4.3	Slot 5	11
2.4.4	Slot 6	12
2.4.5	Slot 7	13
2.5	FID Slots	14
2.5.1	Slot 0	14
2.5.2	Slot 1	15
2.5.3	Slot 2	16
3	Point Sources	17
A	Summary	18
A.1	Status	18
A.2	Comments	18

1 Front

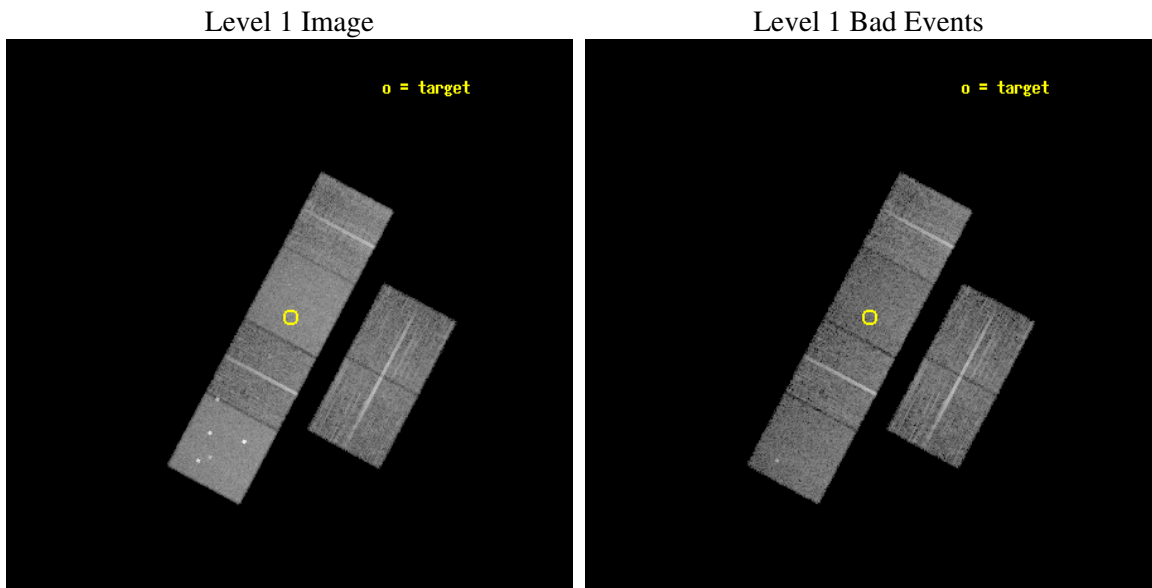
seq_num	900069
obs_id	2242
title	THE NATURE OF NARROW-LINE, FIR-LUMINOUS, X-RAY GALAXIES
observer	PROFESSOR TOM SHANKS
object	GSGP4X:048
dtcycle	0
cycle	P
ra_targ	14.32125
dec_targ	-27.363056
ra_nom	14.324633041718
dec_nom	-27.372402969766
roll_nom	298.04570630849
revision	2
ontime	11843.20001103
livetime	11693.234281371
ontime2	11843.20001103
ontime3	11843.20001103
ontime5	11843.20001103
ontime6	11843.20001103
ontime7	11843.20001103
ontime8	11843.20001103
l2events	121731



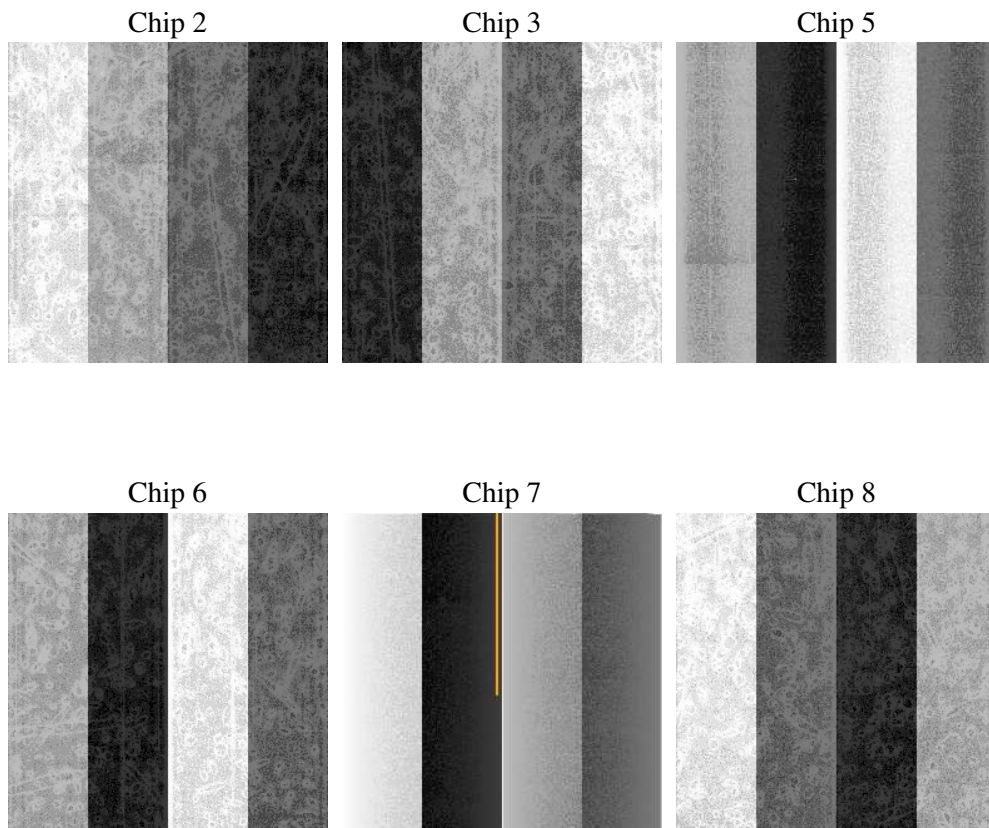
2 OBI

2.1 OBI

2.1.1 Images



2.1.2 Bias



2.1.3 Parameters

obi_num	0
ascdsver	7.6.10
caldsver	3.4.0
date	2007-06-20T11:27:57
revision	2

sched_exp_time	11700.000000
ontime	11843.20001103
ontime2	11843.20001103
ontime3	11843.20001103
ontime5	11843.20001103
ontime6	11843.20001103
ontime7	11843.20001103
ontime8	11843.20001103
l1events	516006

2.1.4 Events

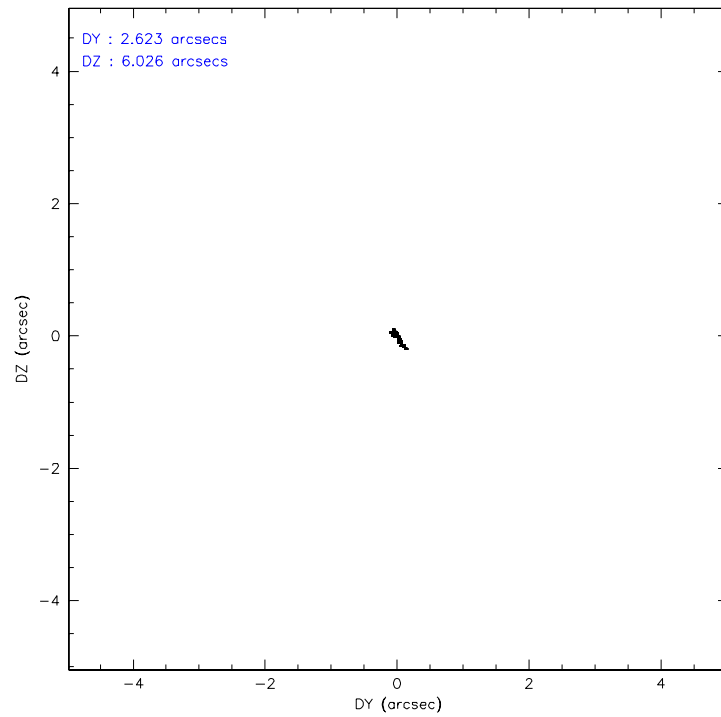
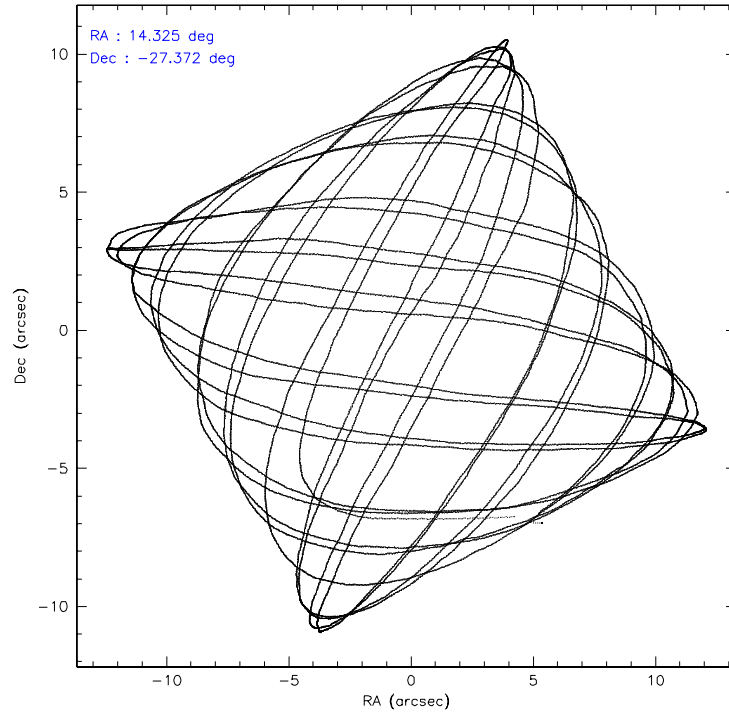
	ccd 2	ccd 3	ccd 5	ccd 6	ccd 7	ccd 8
level 1 events	73051	69414	112391	71986	99534	89630
rejected events	64809	61574	56127	62917	55041	71711
rejected %	88%	88%	49%	87%	55%	80%

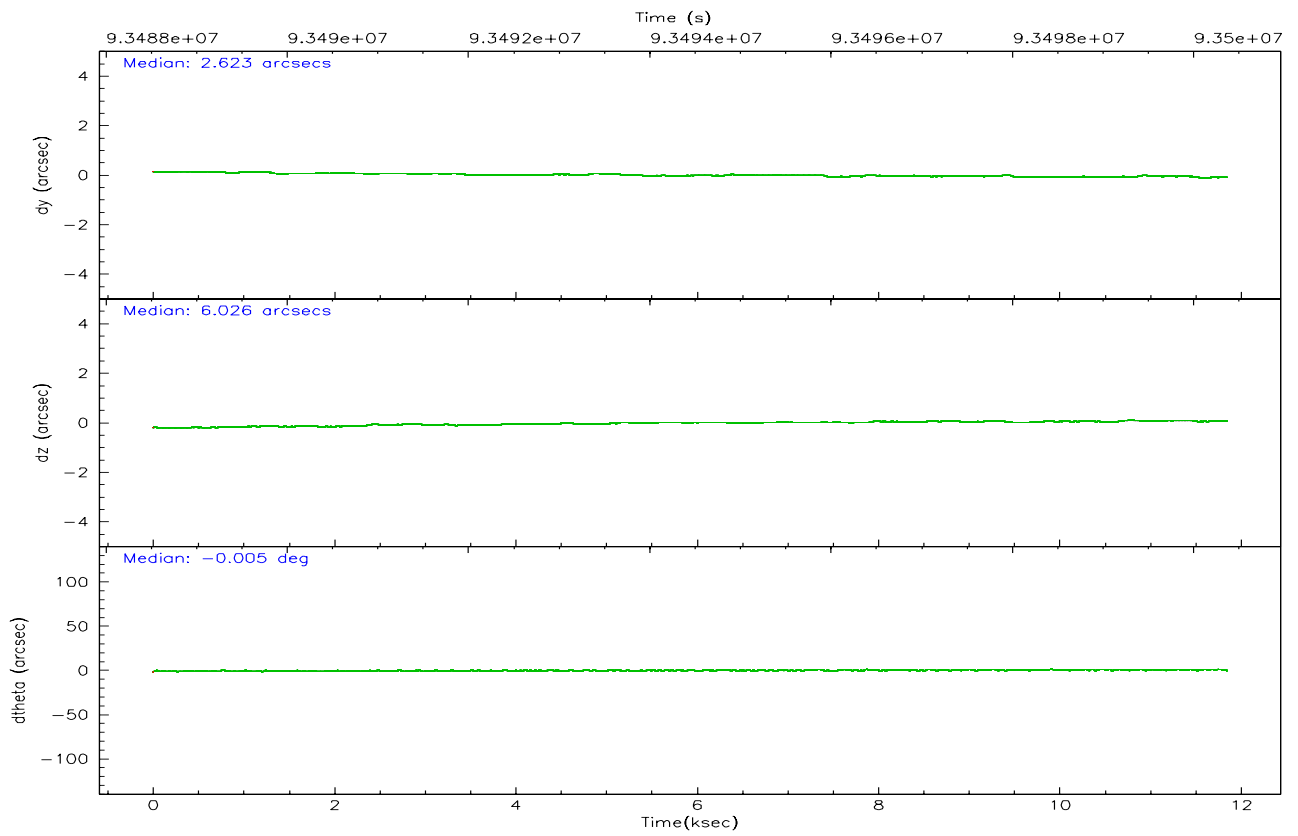
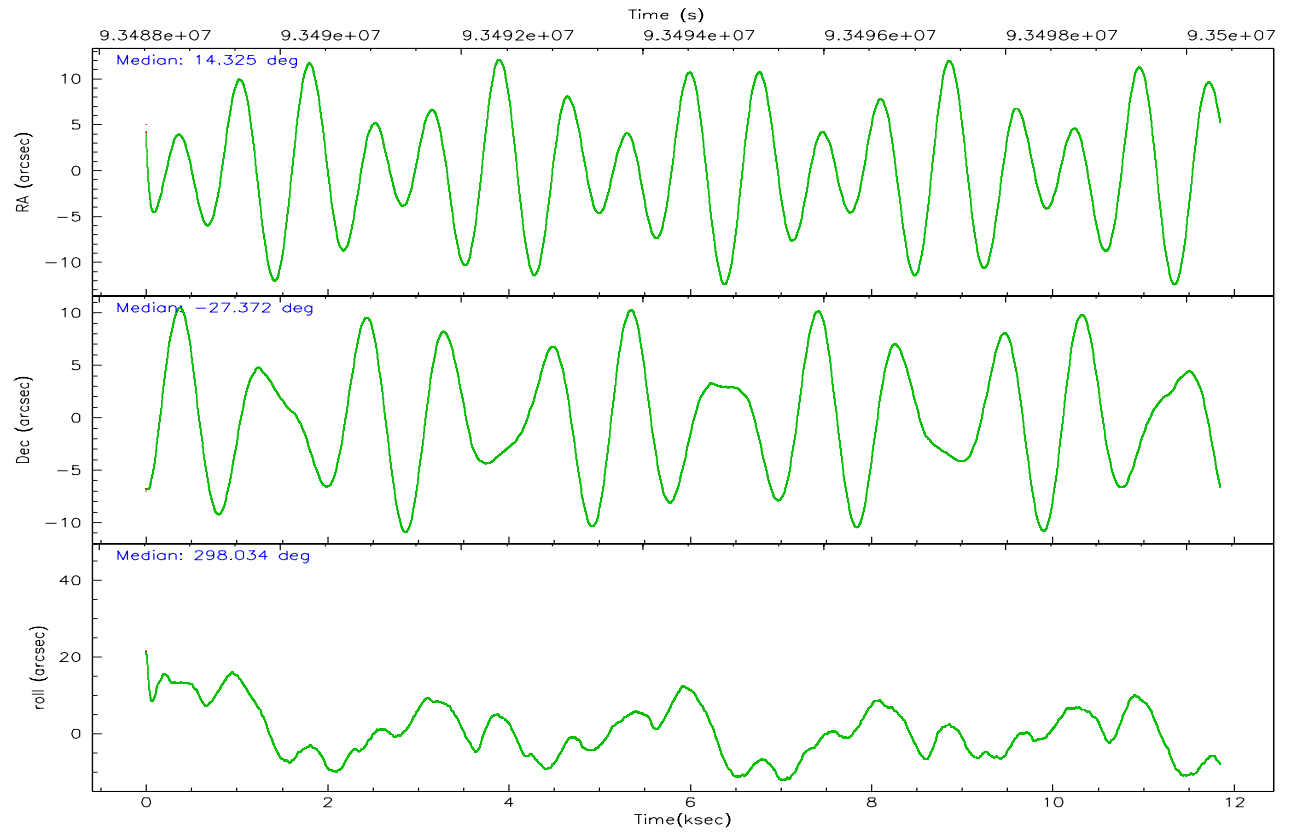
	ccd 2	ccd 3	ccd 5	ccd 6	ccd 7	ccd 8
grade 0 events	3681	3457	10899	4105	4707	5842
	5%	4%	9%	5%	4%	6%
grade 1 events	36	31	102	37	100	41
	0%	0%	0%	0%	0%	0%
grade 2 events	1695	1516	15731	1725	8831	3903
	2%	2%	13%	2%	8%	4%
grade 3 events	787	769	2468	822	4029	1935
	1%	1%	2%	1%	4%	2%
grade 4 events	775	790	2263	846	4062	1710
	1%	1%	2%	1%	4%	1%
grade 5 events	2460	2759	7638	3045	8513	3752
	3%	3%	6%	4%	8%	4%
grade 6 events	1404	1396	26327	1711	24289	4729
	1%	2%	23%	2%	24%	5%
grade 7 events	62213	58696	46963	59695	45003	67718
	85%	84%	41%	82%	45%	75%

2.2 Compared Parameters

Parameter	Planned	Actual	Parameter	Planned	Actual
Instrument	ACIS	ACIS	Obspar format version number	6	6
Detector	ACIS-235678	ACIS-235678	Obspar file type	PREDICTED	ACTUAL
Grating	NONE	NONE	Obspar update status	NONE	UPDATED
Data mode	FAINT	FAINT	Number of optional ACIS chips dropped	0	0
Observation mode	POINTING	POINTING	On-chip summing requested	N	N
Pointing RA	14.298373	14.32463304171757	Subarray requested	NONE	NONE
Pointing Dec	-27.358155	-27.37240296976645	Alternating exposures requested	N	N
Pointing Roll	297.876990	298.0457063084883	Primary exposure time	0.000000	3.2
SIM focus pos (mm)	-0.684267	-0.6828225247311905			
SIM defocus (mm)	0	0.001444936568705701			
SIM translation stage pos (mm)	-190.132523	-190.1400660498719			
SIM translation stage offset (mm)	0	0.00754346686406393			
Observation start time	93488666.184000	93487571.317581			
Observation start date	2000-12-18T01:03:22	2000-12-18T00:46:11			
Observation end time	93500366.184000	93501138.218099			
Observation end date	2000-12-18T04:18:22	2000-12-18T04:32:18			
Read mode	TIMED	TIMED			

2.3 Aspect



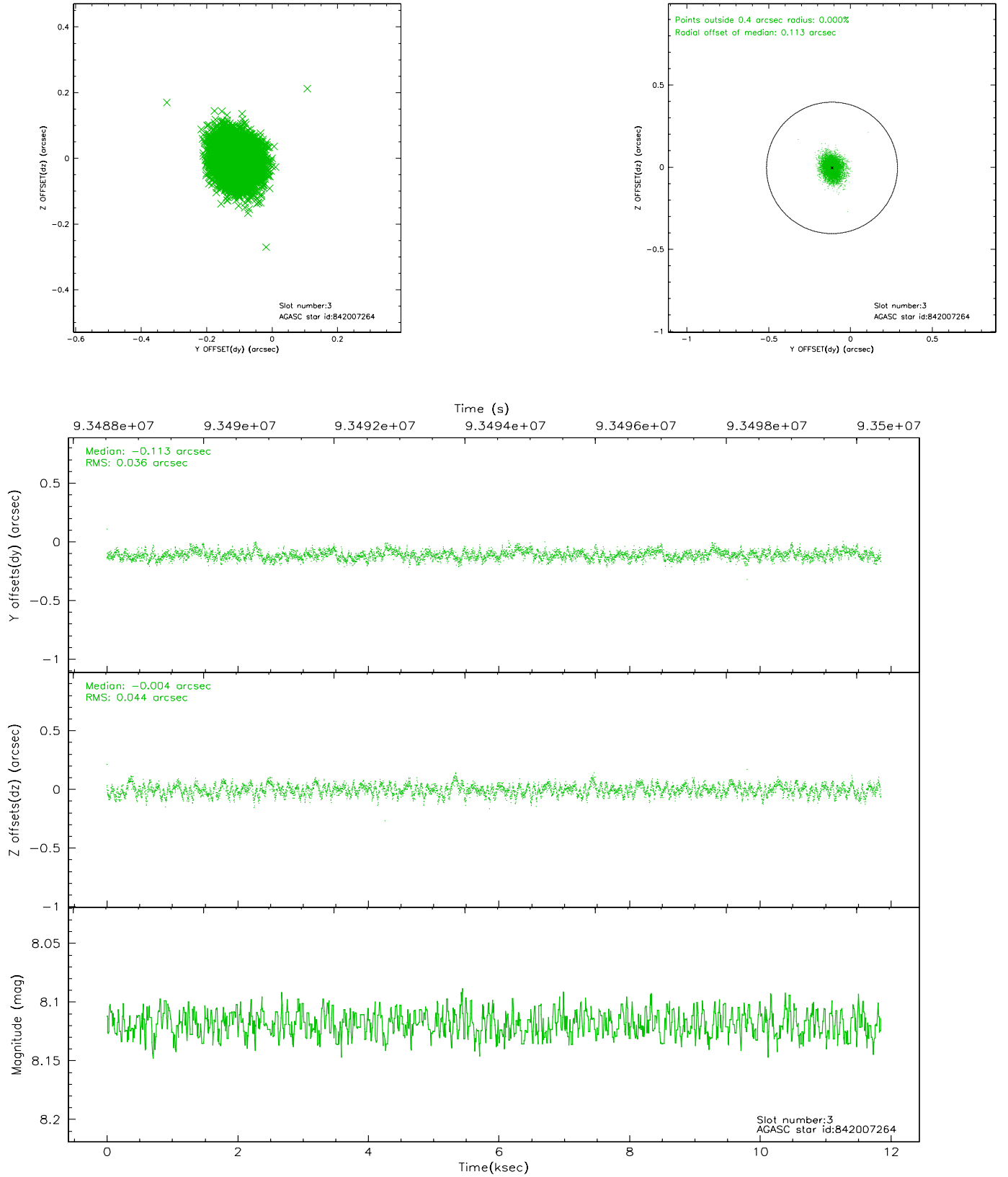


Slot Statistics

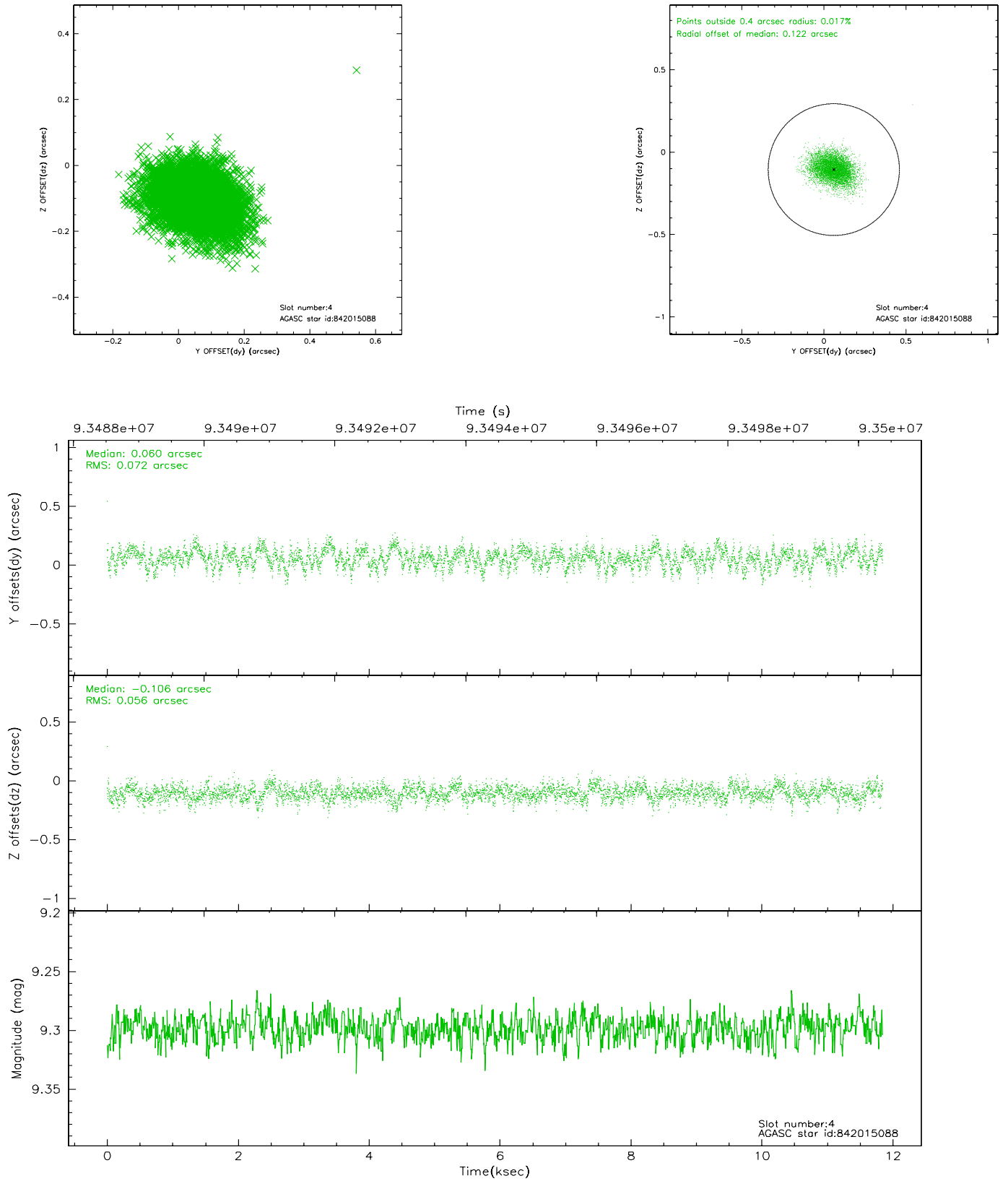
slot	status	id	mag	n_pts	med_dy	med_dz	dr1	dr2	ra	dec	mean_y	mean_z
0	FID	ACIS-S-2	7.11	2891	-0.014	0.043	0.007	0.011	0.000000	0.000000	-755.25	-1727.10
1	FID	ACIS-S-4	7.21	2891	-0.073	-0.005	0.005	0.009	0.000000	0.000000	2157.75	180.93
2	FID	ACIS-S-5	7.23	2891	0.056	-0.030	0.006	0.011	0.000000	0.000000	-1807.51	175.01
3	GUIDE	842007264	8.12	5780	-0.113	-0.004	0.061	0.096	14.570692	-27.092422	-437.76	1217.48
4	GUIDE	842015088	9.30	5778	0.060	-0.106	0.097	0.159	13.933025	-27.893682	1161.89	-1930.27
5	GUIDE	842008736	10.43	5769	0.146	0.027	0.147	0.248	14.870220	-27.799337	2258.61	864.58
6	GUIDE	842015640	10.04	5778	-0.071	0.073	0.137	0.228	14.176649	-27.233495	-579.08	-135.35
7	GUIDE	842018000	10.37	5776	-0.012	0.012	0.118	0.194	14.125956	-27.227447	-674.41	-268.90

2.4 Star Slots

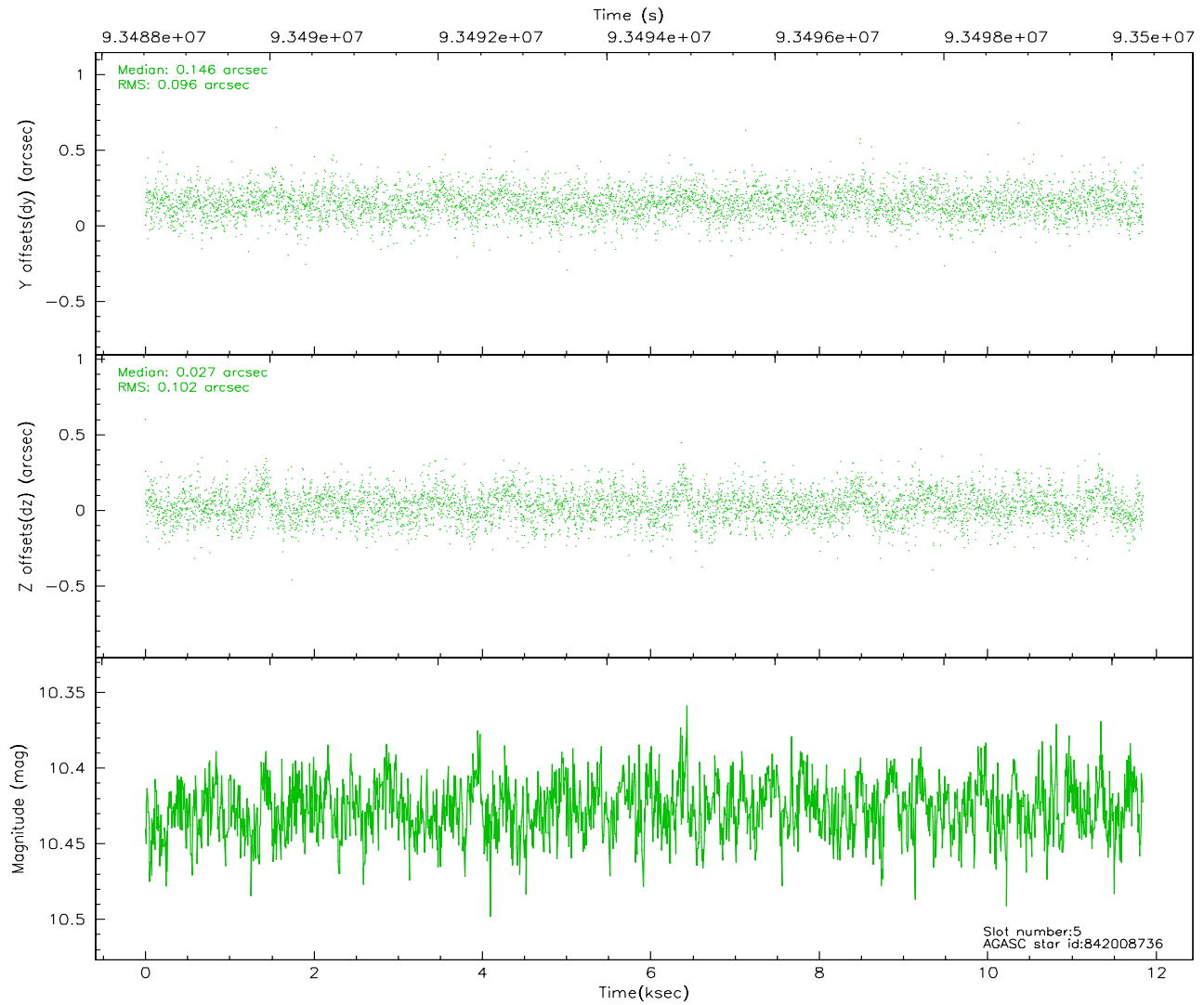
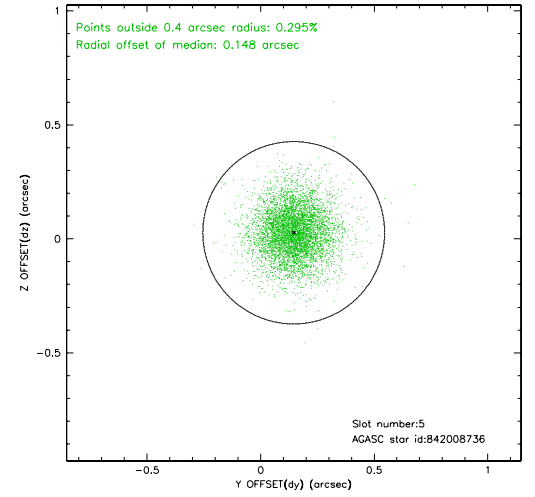
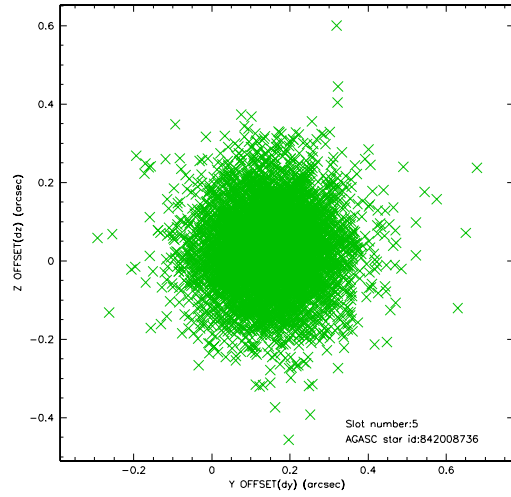
2.4.1 Slot 3



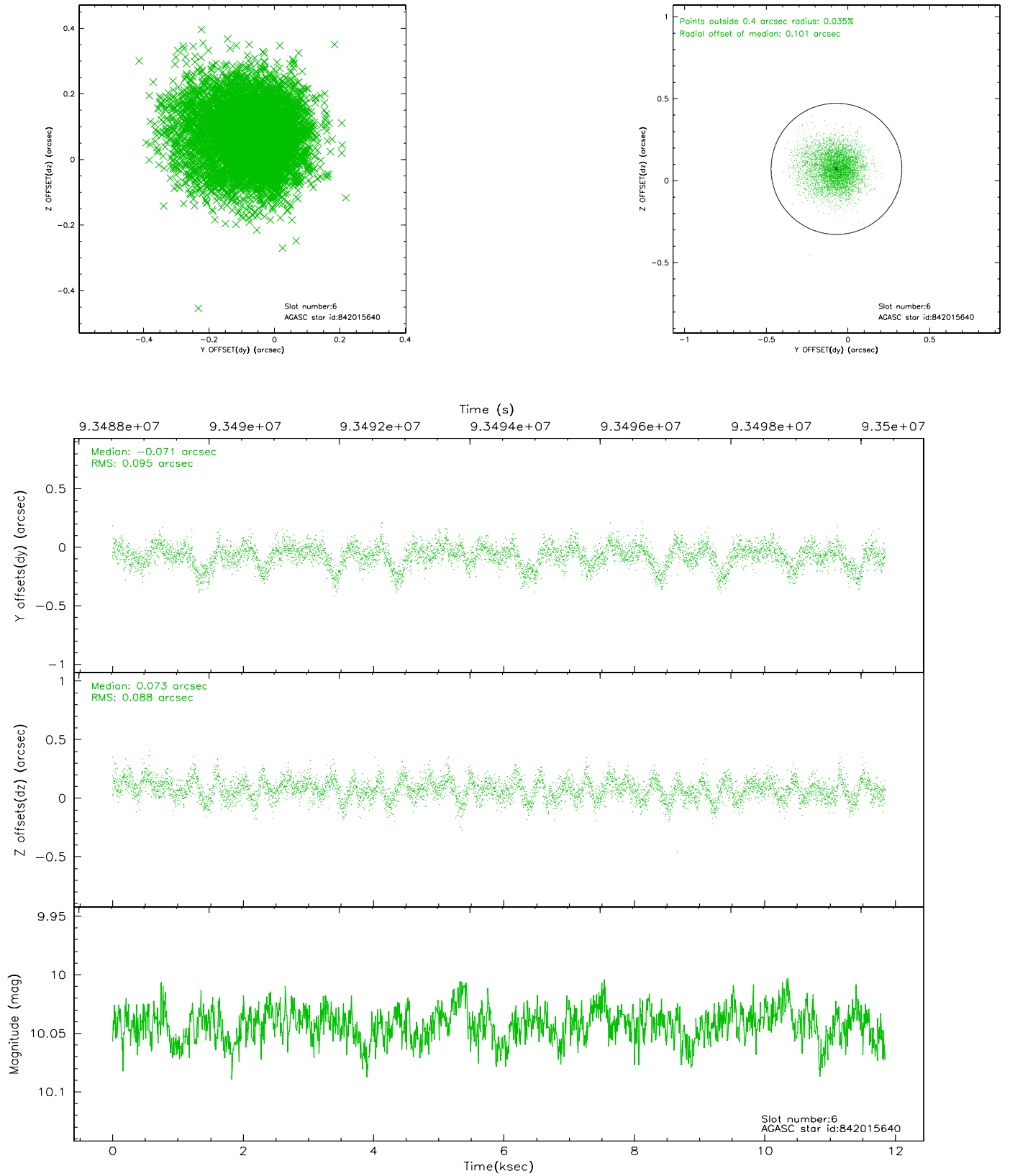
2.4.2 Slot 4



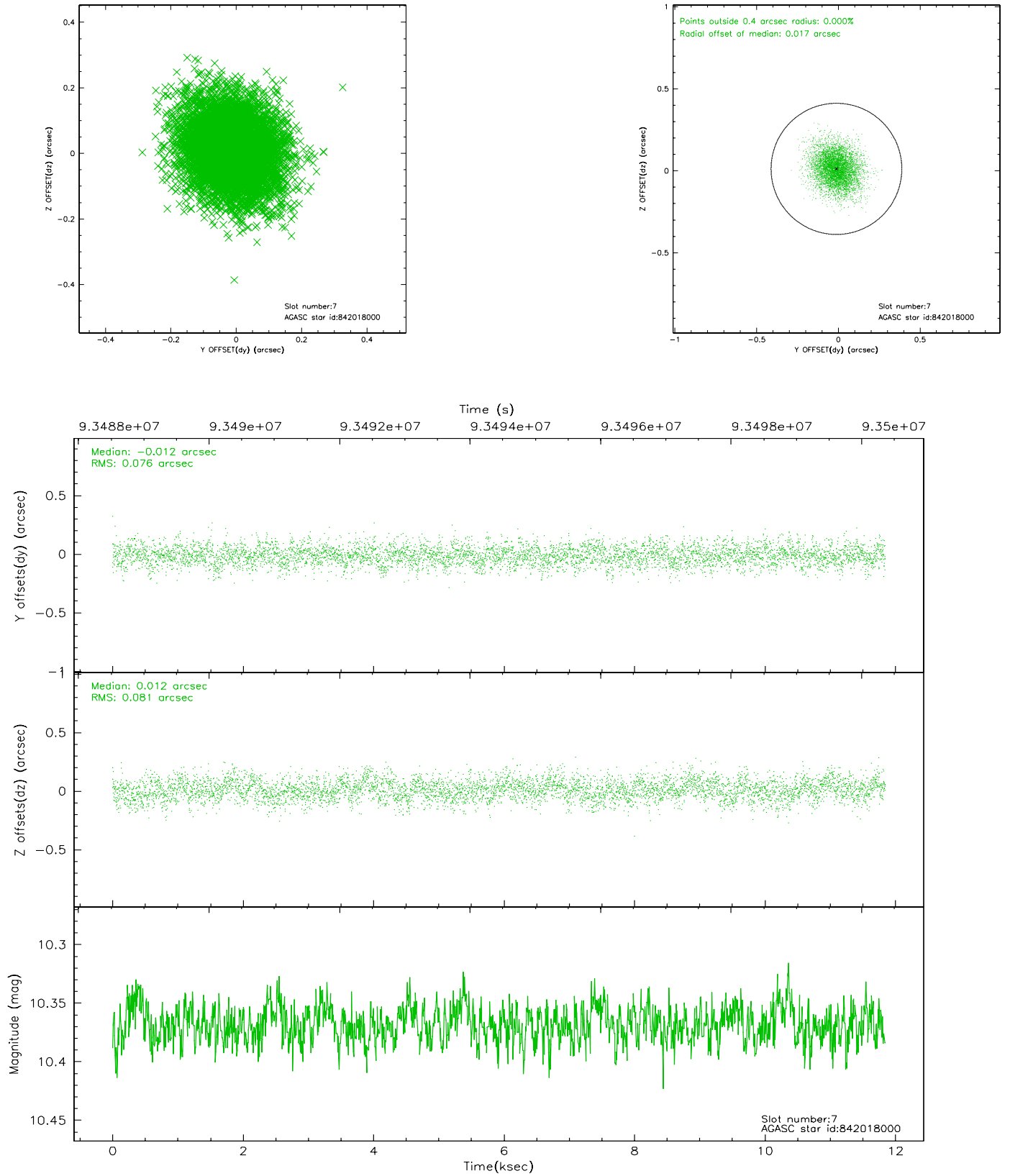
2.4.3 Slot 5



2.4.4 Slot 6

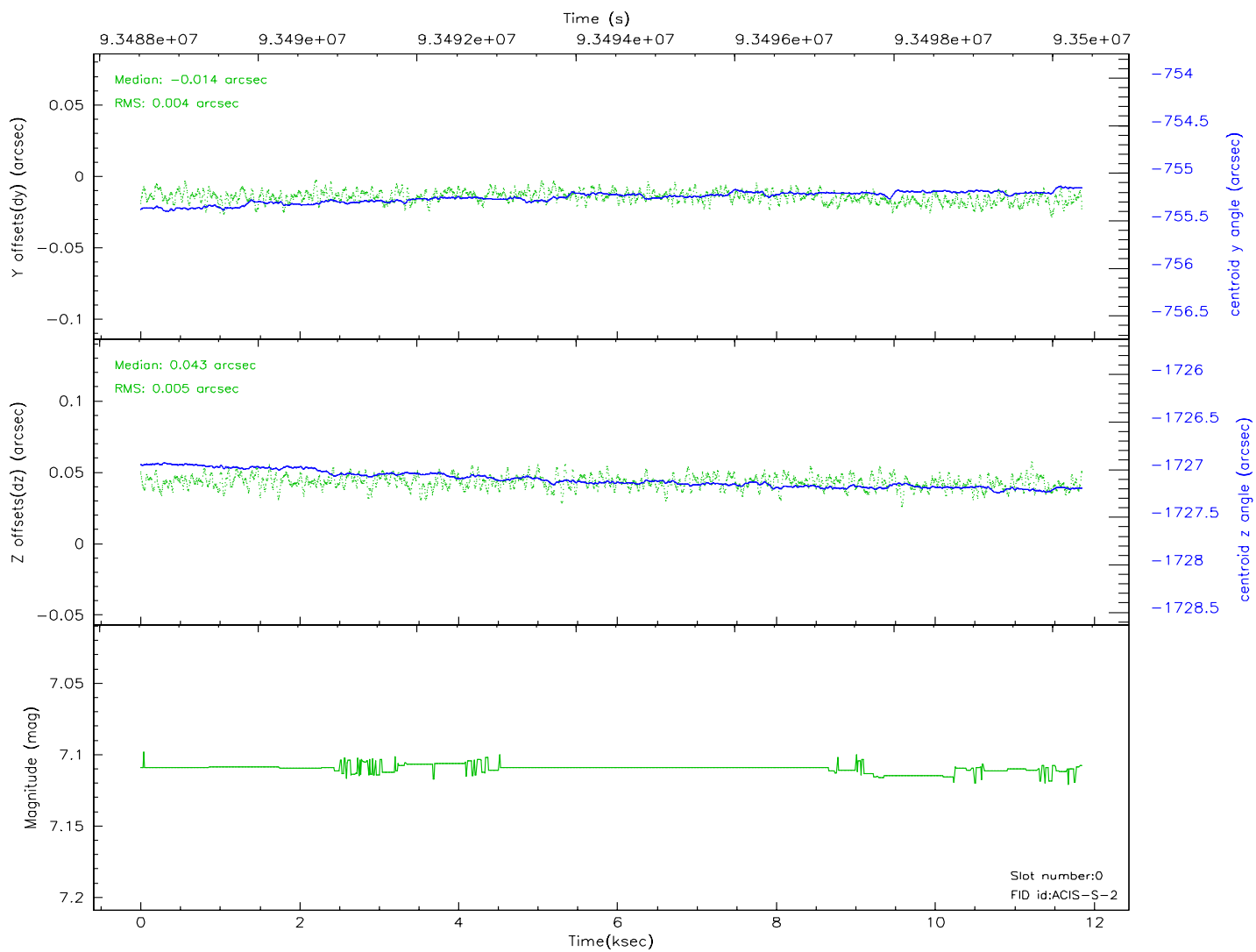
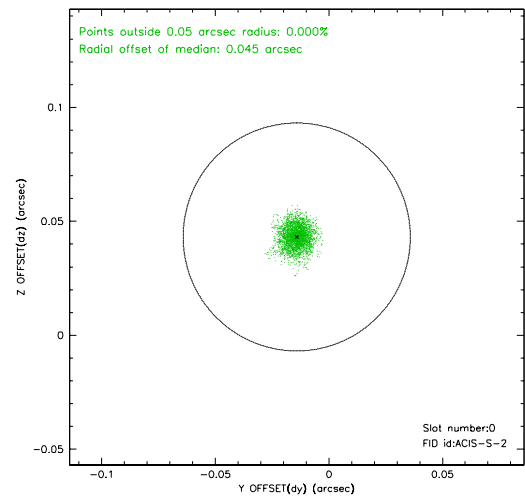
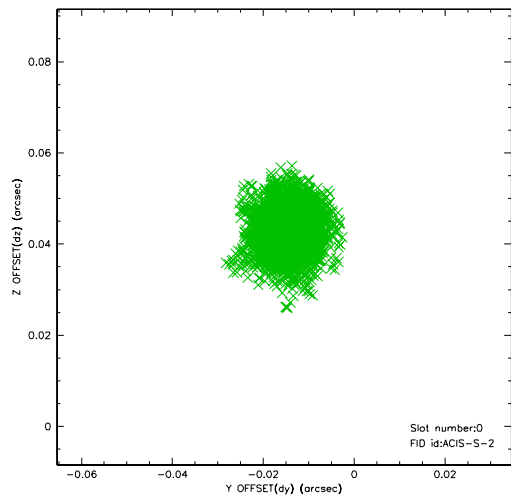


2.4.5 Slot 7

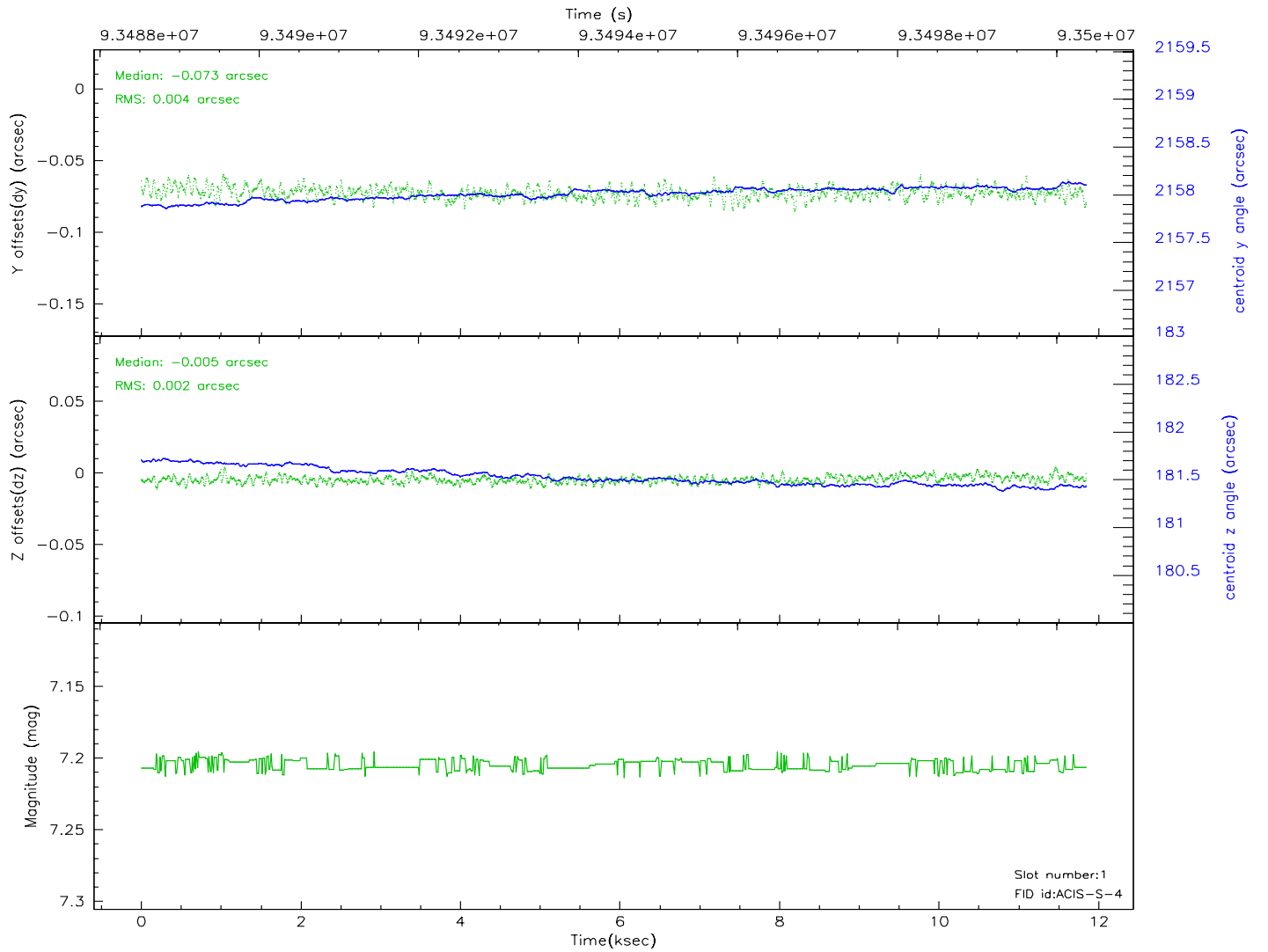
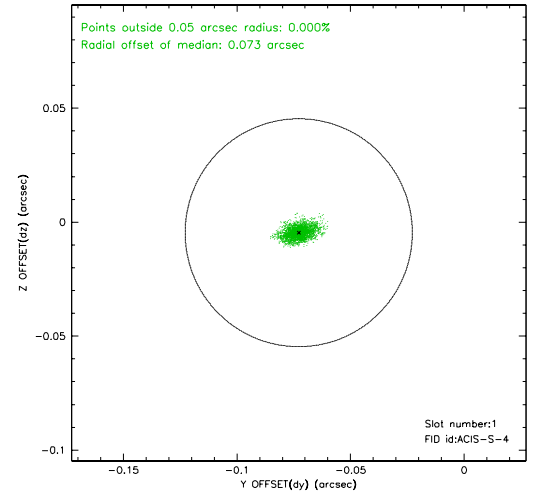
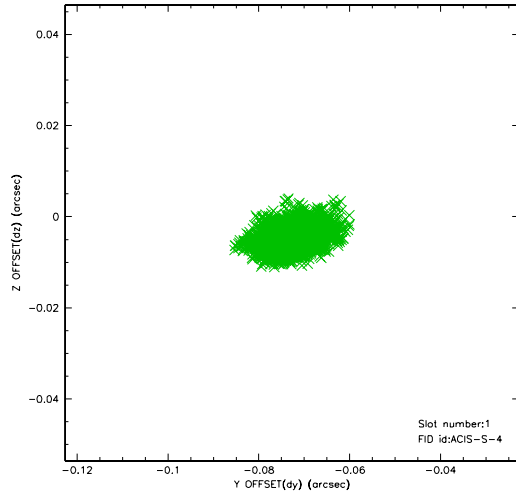


2.5 FID Slots

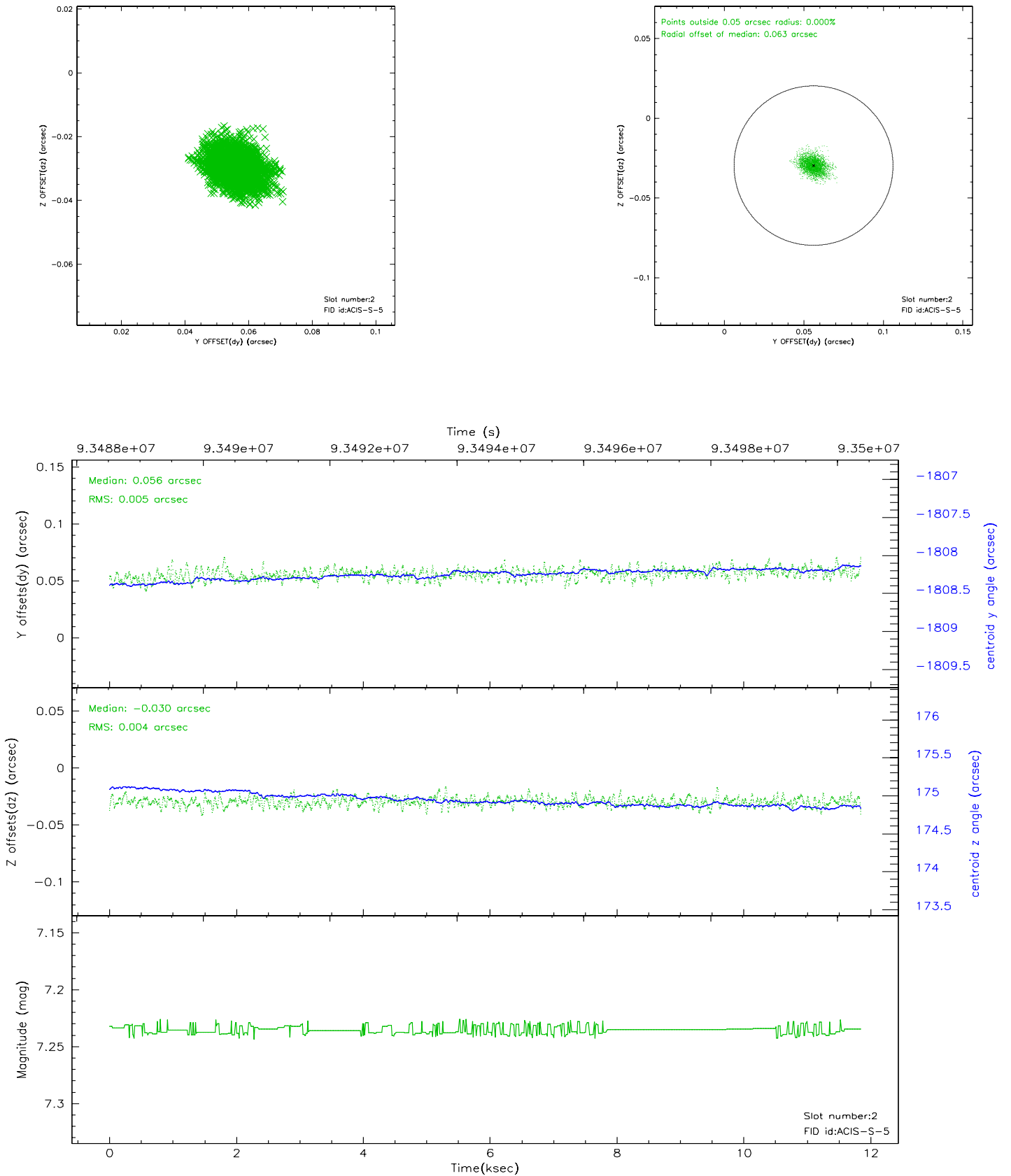
2.5.1 Slot 0



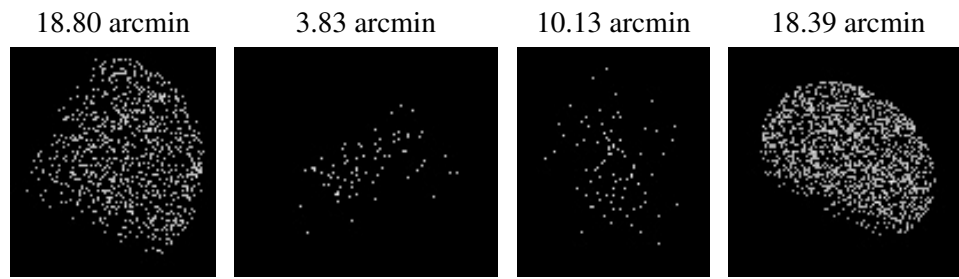
2.5.2 Slot 1



2.5.3 Slot 2



3 Point Sources



A Summary

A.1 Status

V&V Scientist	Beth Sundheim
V&V Date (YYYY-MM-DD)	2007.06.21
V&V Edition	1
V&V Disposition and Status	OK
V&V Charge Time	11.843

A.2 Comments