

V&V Reference Report

L2 ASCDS Version : 7.6.9

Observation 2240 - L2 Version 001
Chandra X-Ray Center

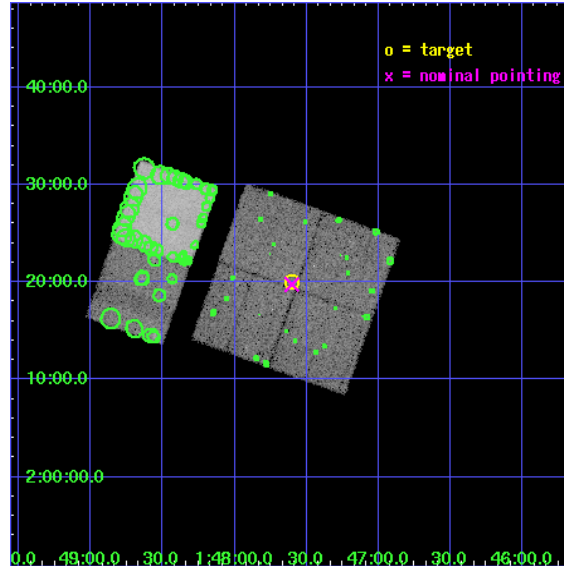
L2 Processing Date : Nov 4 2006

Contents

1	Front	2
2	OBI	3
2.1	OBI	3
2.1.1	Images	3
2.1.2	Bias	3
2.1.3	Parameters	4
2.1.4	Events	4
2.2	Compared Parameters	5
2.3	Aspect	6
2.4	Star Slots	9
2.4.1	Slot 3	9
2.4.2	Slot 4	10
2.4.3	Slot 5	11
2.4.4	Slot 6	12
2.4.5	Slot 7	13
2.5	FID Slots	14
2.5.1	Slot 0	14
2.5.2	Slot 1	15
2.5.3	Slot 2	16
3	Point Sources	17
A	Summary	18
A.1	Status	18
A.2	Comments	18

1 Front

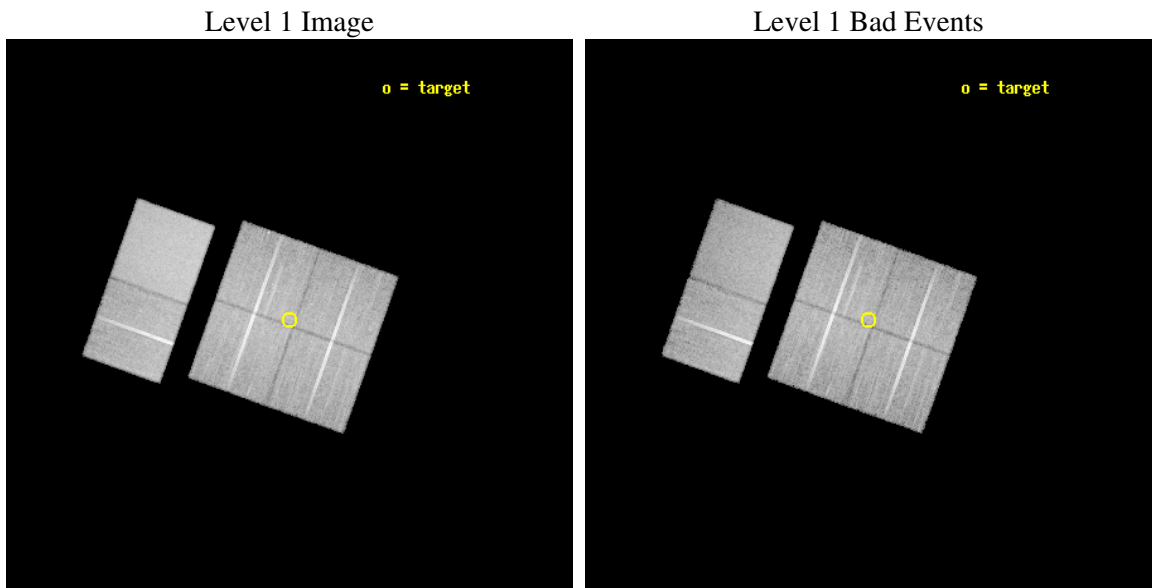
seq_num	900067
obs_id	2240
title	A DEEP X-RAY SURVEY FOR ACTIVE GALACTIC NUCLEI IN THE EXTREMELY RED GALAXY POPULATION
observer	DR. DAVID THOMPSON
object	CADIS 01H FIELD
dtcycle	0
cycle	P
ra_targ	26.900833
dec_targ	2.33425
ra_nom	26.900538417121
dec_nom	2.3294416017302
roll_nom	289.64303455324
revision	2
ontime	29939.159067661
livetime	29560.051408349
ontime0	29942.400027886
ontime1	29939.159037724
ontime2	29939.159047723
ontime3	29939.159067661
ontime6	29939.159077629
ontime7	29942.400027886
l2events	196751



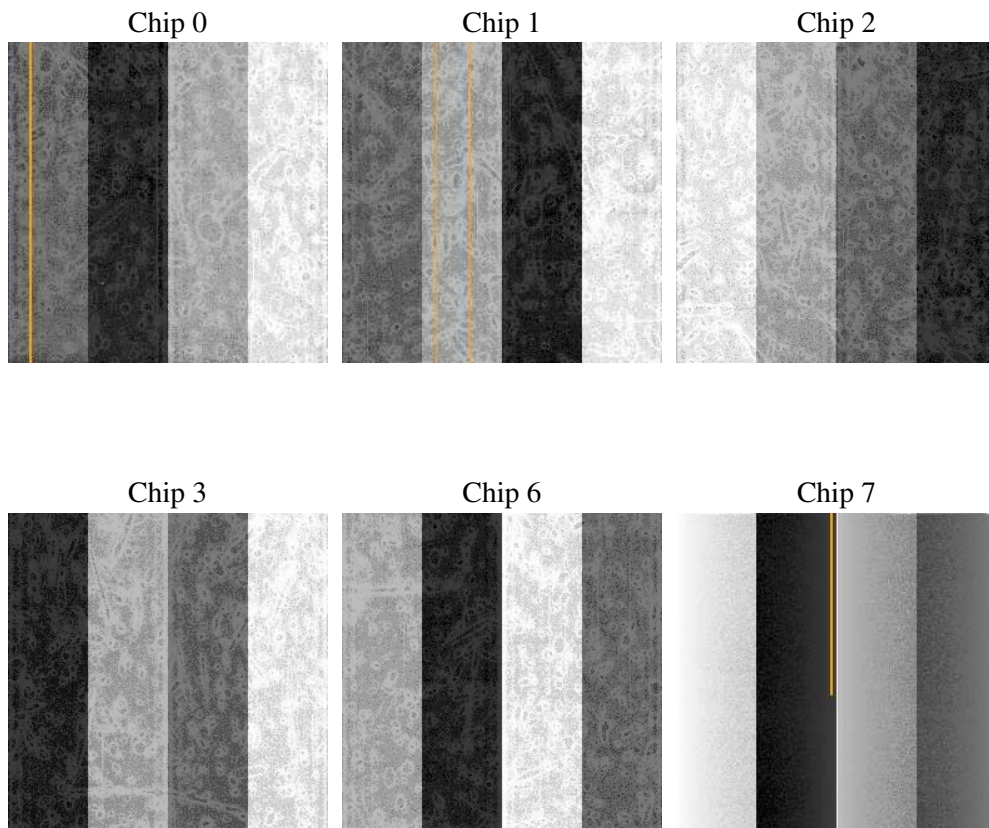
2 OBI

2.1 OBI

2.1.1 Images



2.1.2 Bias



2.1.3 Parameters

obi_num	0
ascdsver	7.6.9
caldsver	3.2.3
date	2006-11-04T11:18:37
revision	2

sched_exp_time	30000.000000
ontime	29943.573342219
ontime0	29946.814302444
ontime1	29943.573312283
ontime2	29943.573322281
ontime3	29943.573342219
ontime6	29943.573352188
ontime7	29946.814302444
l1events	1094598

2.1.4 Events

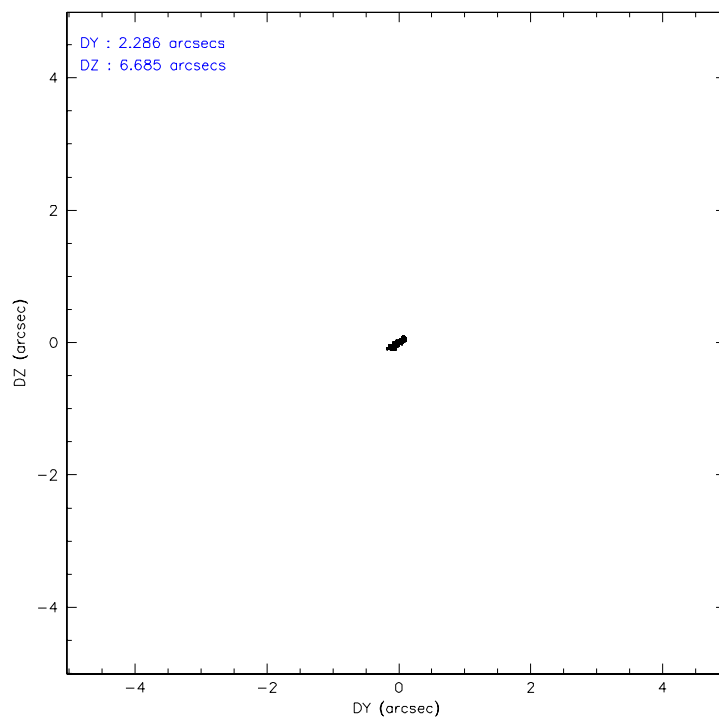
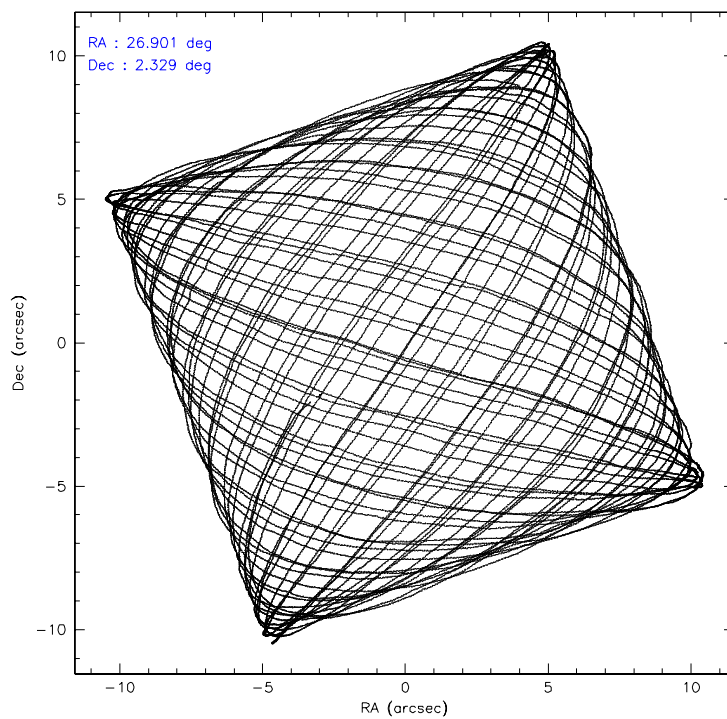
	ccd 0	ccd 1	ccd 2	ccd 3	ccd 6	ccd 7
level 1 events	161553	162020	177367	174719	181378	237561
rejected events	138639	138181	154851	152532	157106	138489
rejected %	85%	85%	87%	87%	86%	58%

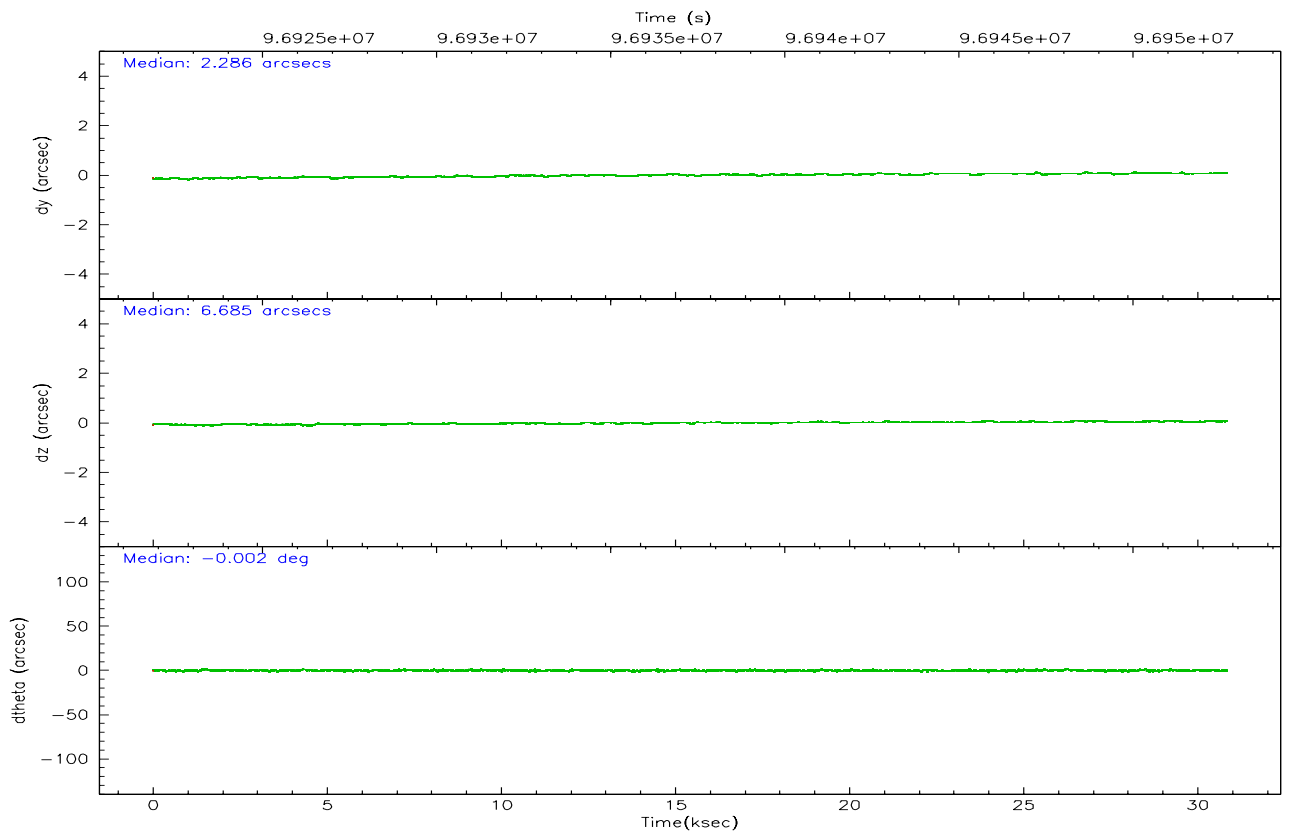
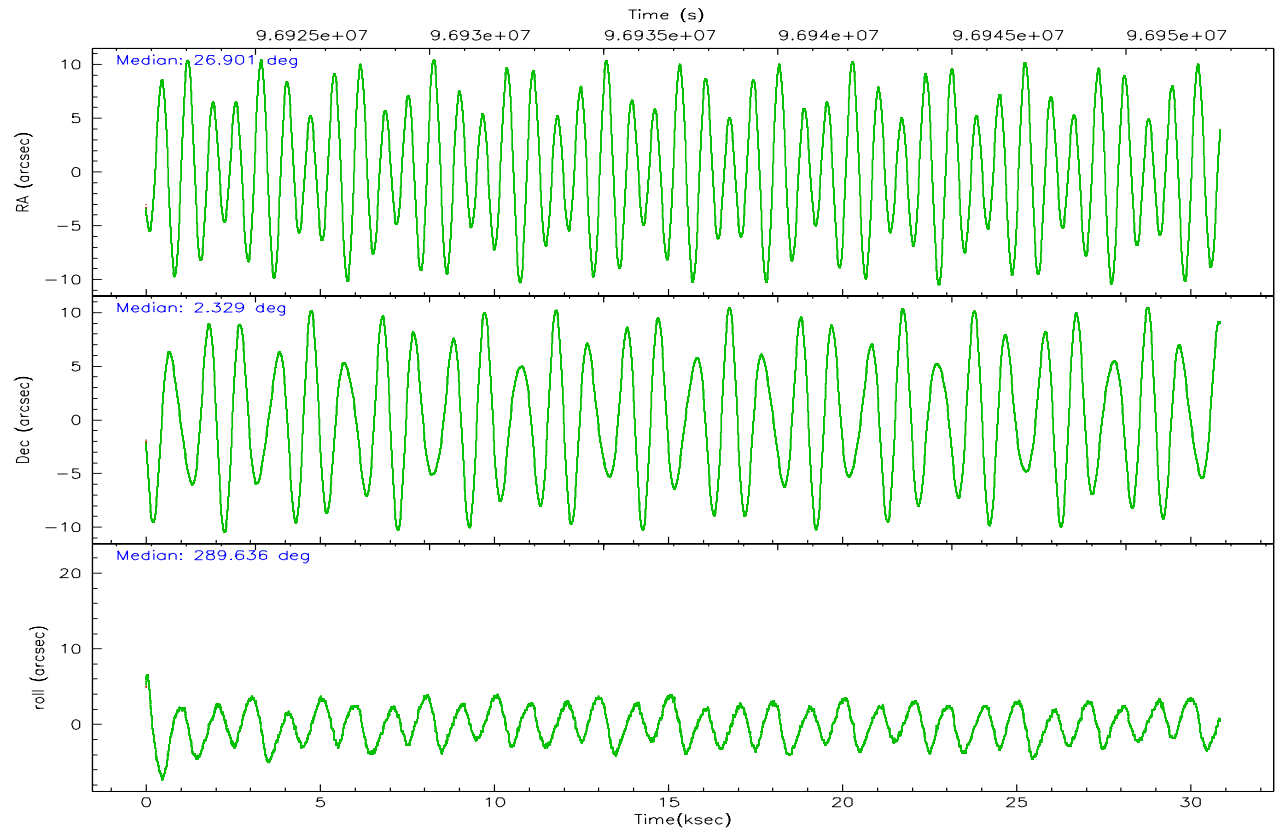
	ccd 0	ccd 1	ccd 2	ccd 3	ccd 6	ccd 7
grade 0 events	10355	10420	10186	10019	11050	7136
	6%	6%	5%	5%	6%	3%
grade 1 events	90	84	89	79	80	146
	0%	0%	0%	0%	0%	0%
grade 2 events	4971	4727	4752	4486	4790	23351
	3%	2%	2%	2%	2%	9%
grade 3 events	1994	2218	1902	1933	2059	5439
	1%	1%	1%	1%	1%	2%
grade 4 events	1804	2246	1990	1964	2074	5237
	1%	1%	1%	1%	1%	2%
grade 5 events	6094	6575	5728	6779	7422	14974
	3%	4%	3%	3%	4%	6%
grade 6 events	3798	4234	3690	3791	4306	57953
	2%	2%	2%	2%	2%	24%
grade 7 events	132447	131516	149030	145668	149597	123325
	81%	81%	84%	83%	82%	51%

2.2 Compared Parameters

Parameter	Planned	Actual	Parameter	Planned	Actual
Instrument	ACIS	ACIS	Obspar format version number	6	6
Detector	ACIS-012367	ACIS-012367	Obspar file type	PREDICTED	ACTUAL
Grating	NONE	NONE	Obspar update status	NONE	UPDATED
Data mode	VFAINT	VFAINT	Number of optional ACIS chips dropped	0	0
Observation mode	POINTING	POINTING	On-chip summing requested	N	N
Pointing RA	26.879611	26.9005384171206	Subarray requested	NONE	NONE
Pointing Dec	2.347267	2.329441601730156	Alternating exposures requested	N	N
Pointing Roll	289.435206	289.6430345532359	Primary exposure time	0.000000	3.2
SIM focus pos (mm)	-0.782348	-0.7809083437167272			
SIM defocus (mm)	0	0.001439871863259334			
SIM translation stage pos (mm)	-233.592463	-233.5874344608287			
SIM translation stage offset (mm)	0	-0.005018542100998502			
Observation start time	96922693.184000	96921407.03677399			
Observation start date	2001-01-26T18:57:09	2001-01-26T18:36:47			
Observation end time	96952693.184000	96953283.00049999			
Observation end date	2001-01-27T03:17:09	2001-01-27T03:28:03			
Read mode	TIMED	TIMED			

2.3 Aspect



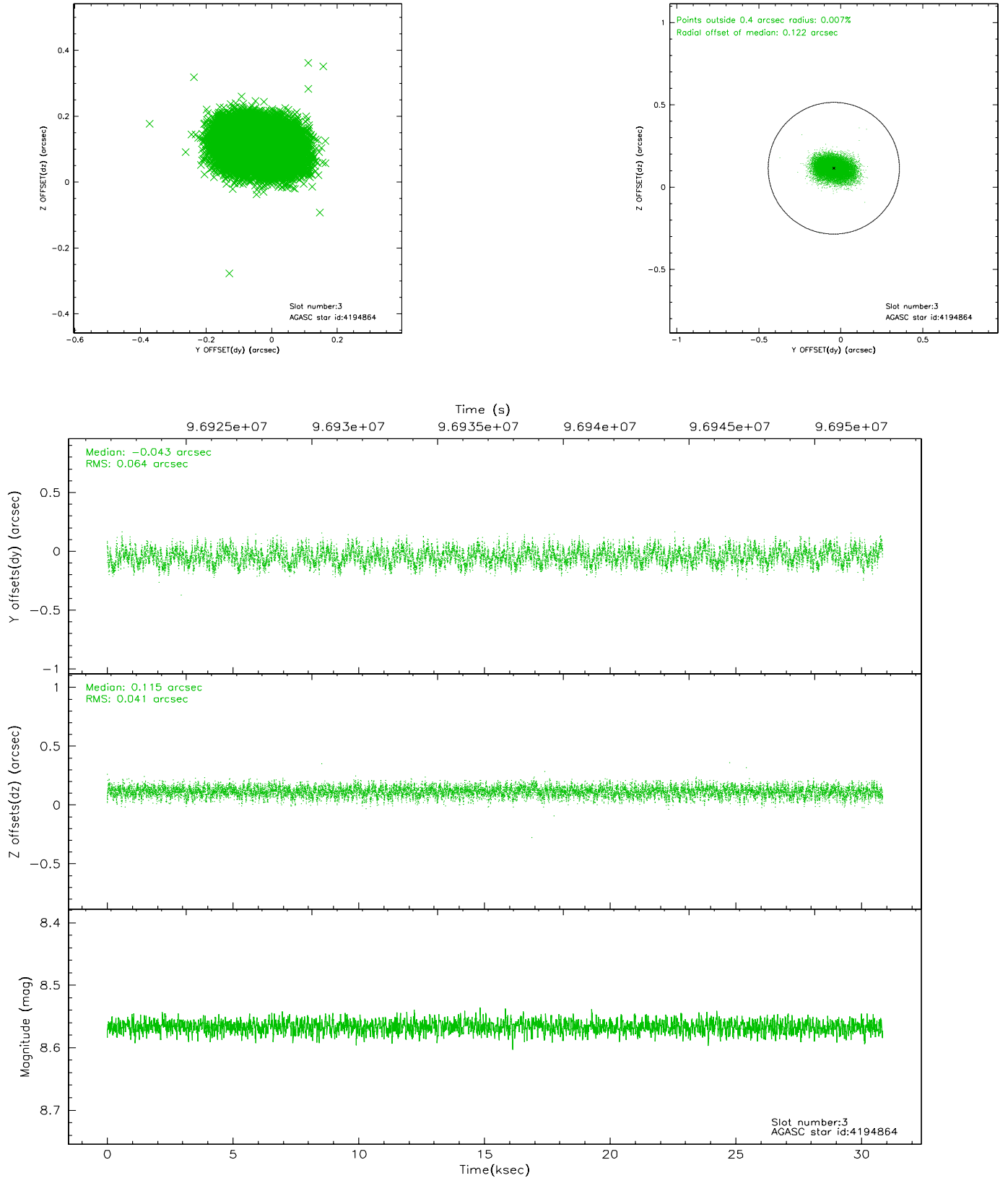


Slot Statistics

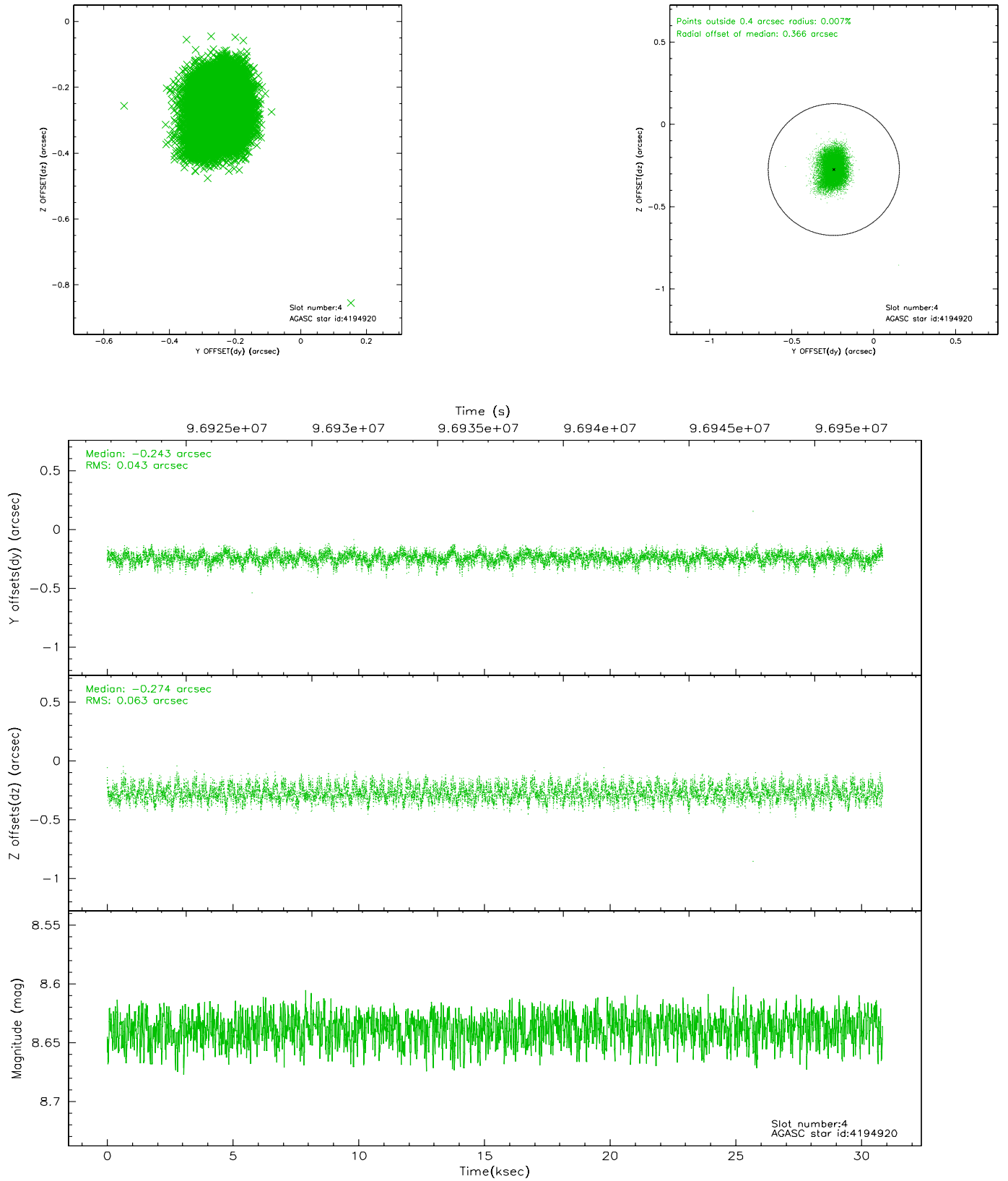
slot	status	id	mag	n_pts	med_dy	med_dz	dr1	dr2	ra	dec	mean_y	mean_z
0	FID	ACIS-I-2	7.15	7523	-0.023	-0.036	0.011	0.017	0.000000	0.000000	-756.66	-836.46
1	FID	ACIS-I-4	7.18	7524	-0.080	0.032	0.007	0.013	0.000000	0.000000	2157.31	1069.74
2	FID	ACIS-I-5	7.23	7525	0.003	0.073	0.010	0.017	0.000000	0.000000	-1810.38	1067.71
3	GUIDE	4194864	8.57	15040	-0.043	0.115	0.081	0.130	27.061604	2.711355	-1019.00	1052.82
4	GUIDE	4194920	8.64	15046	-0.243	-0.274	0.082	0.131	26.080477	2.615510	-1868.37	-2389.63
5	GUIDE	4196136	9.30	15038	-0.052	0.062	0.082	0.132	27.411697	2.640748	-360.99	2155.49
6	GUIDE	4328000	9.51	15044	0.038	0.081	0.124	0.193	27.508833	2.521595	159.89	2342.74
7	GUIDE	3802016	9.53	15044	0.297	0.017	0.096	0.155	26.888447	1.995804	1203.59	-391.27

2.4 Star Slots

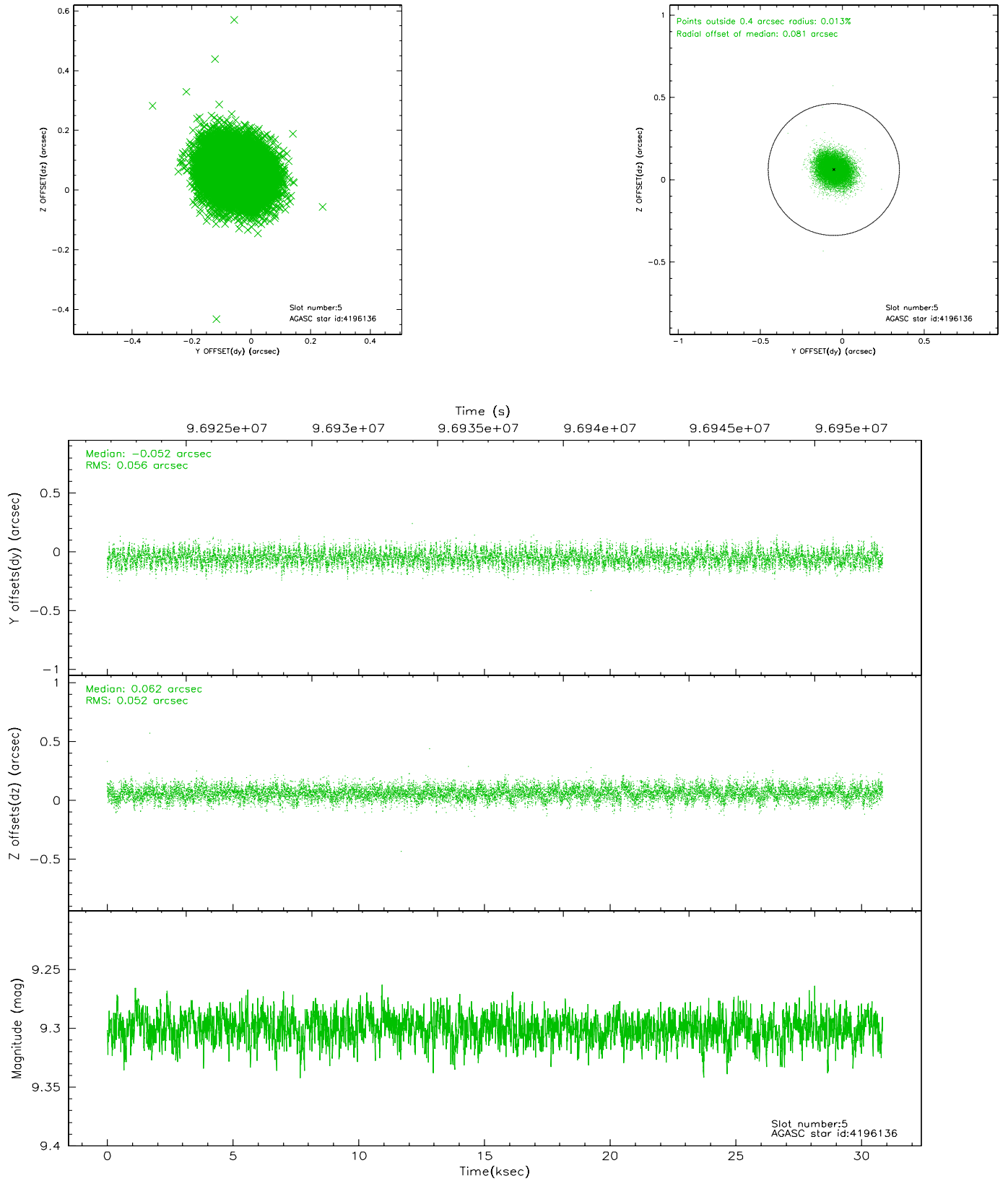
2.4.1 Slot 3



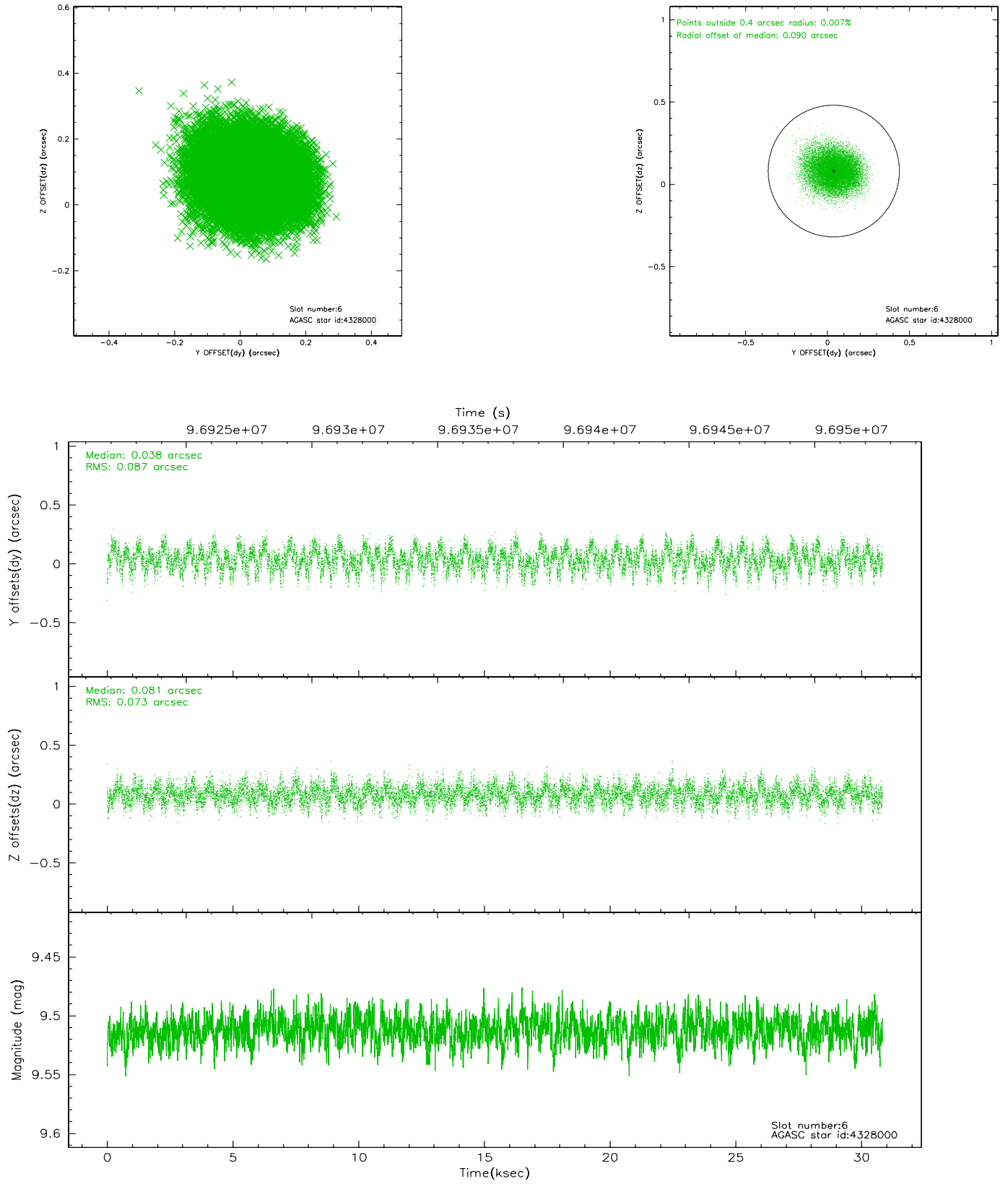
2.4.2 Slot 4



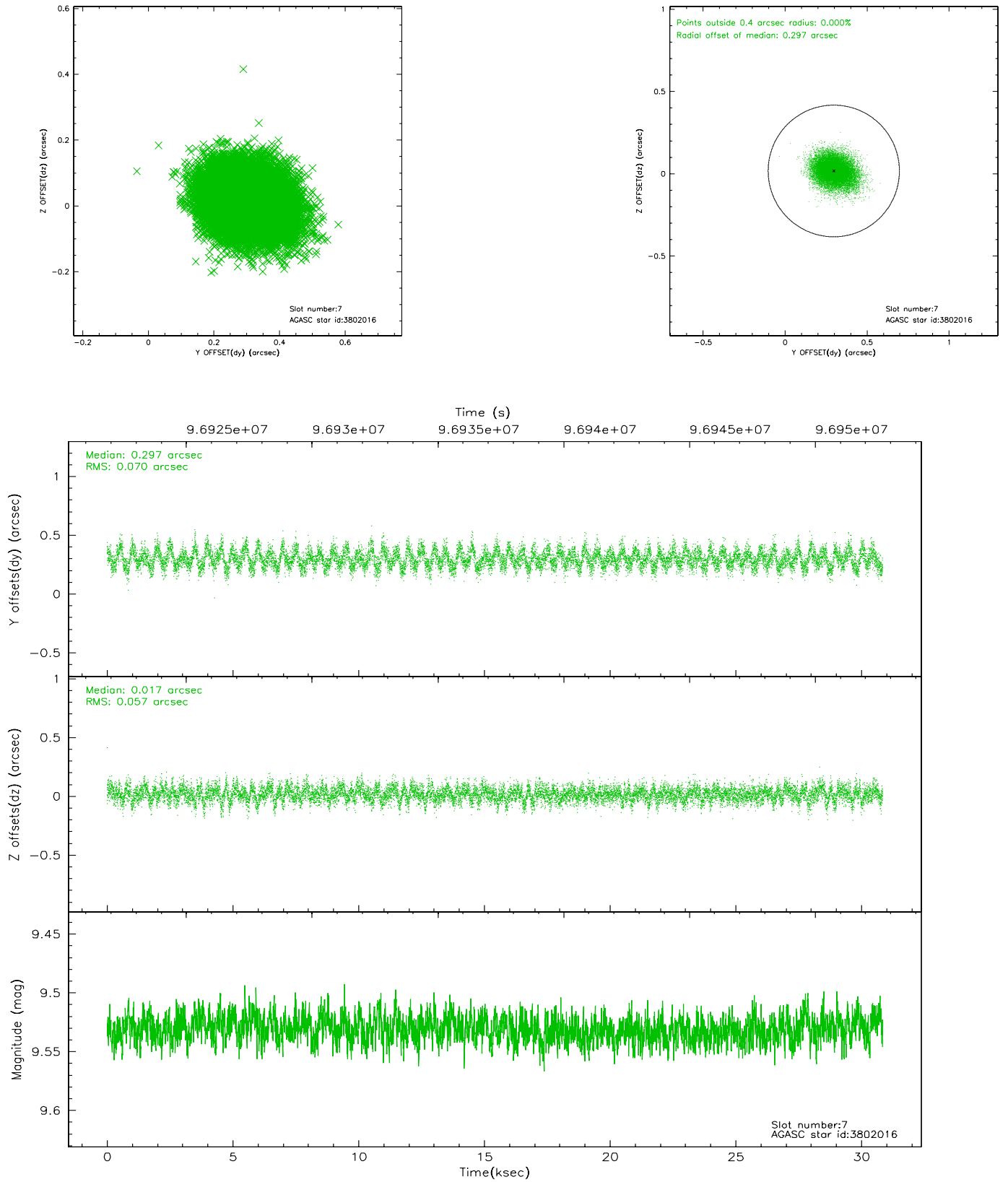
2.4.3 Slot 5



2.4.4 Slot 6

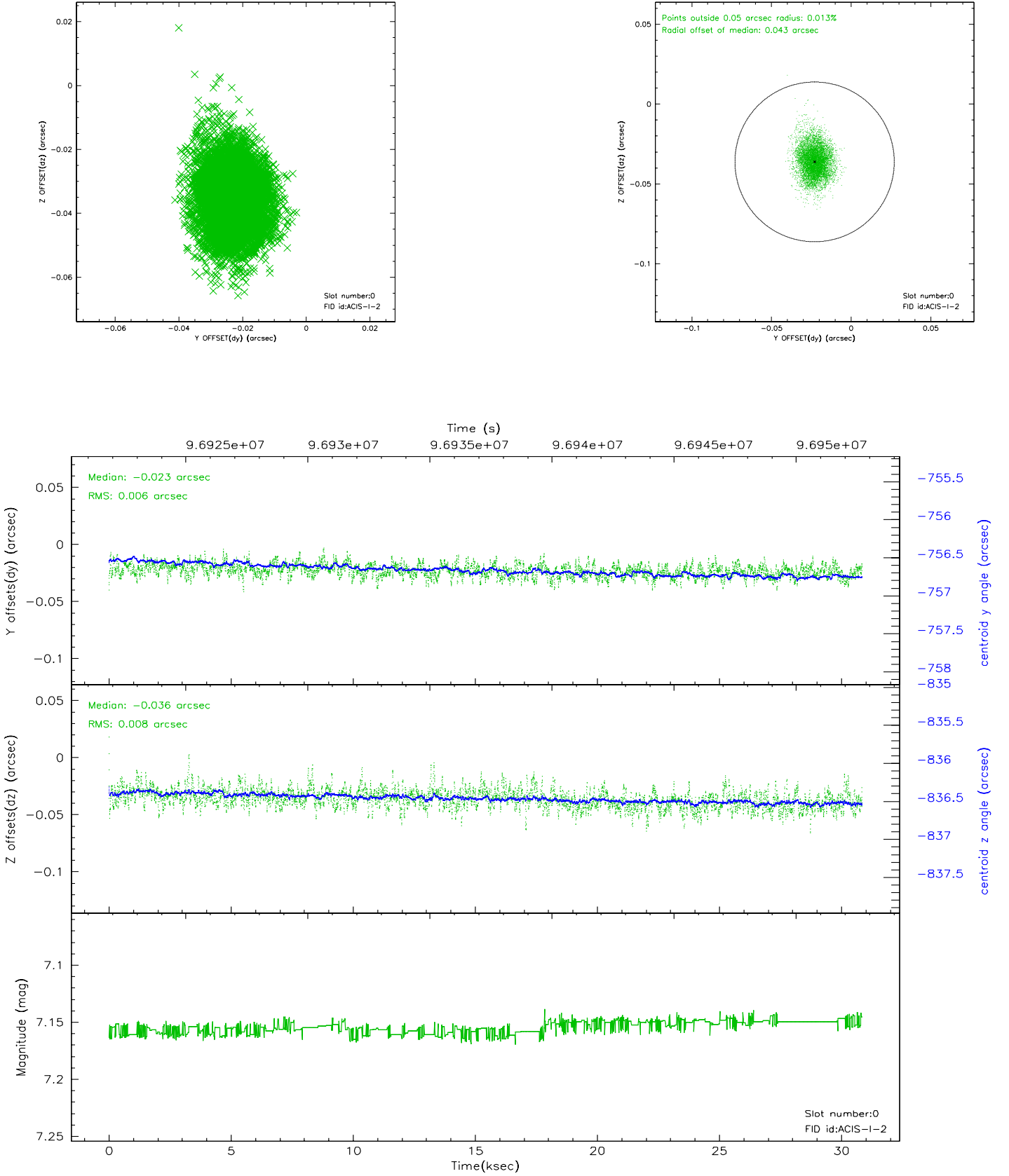


2.4.5 Slot 7

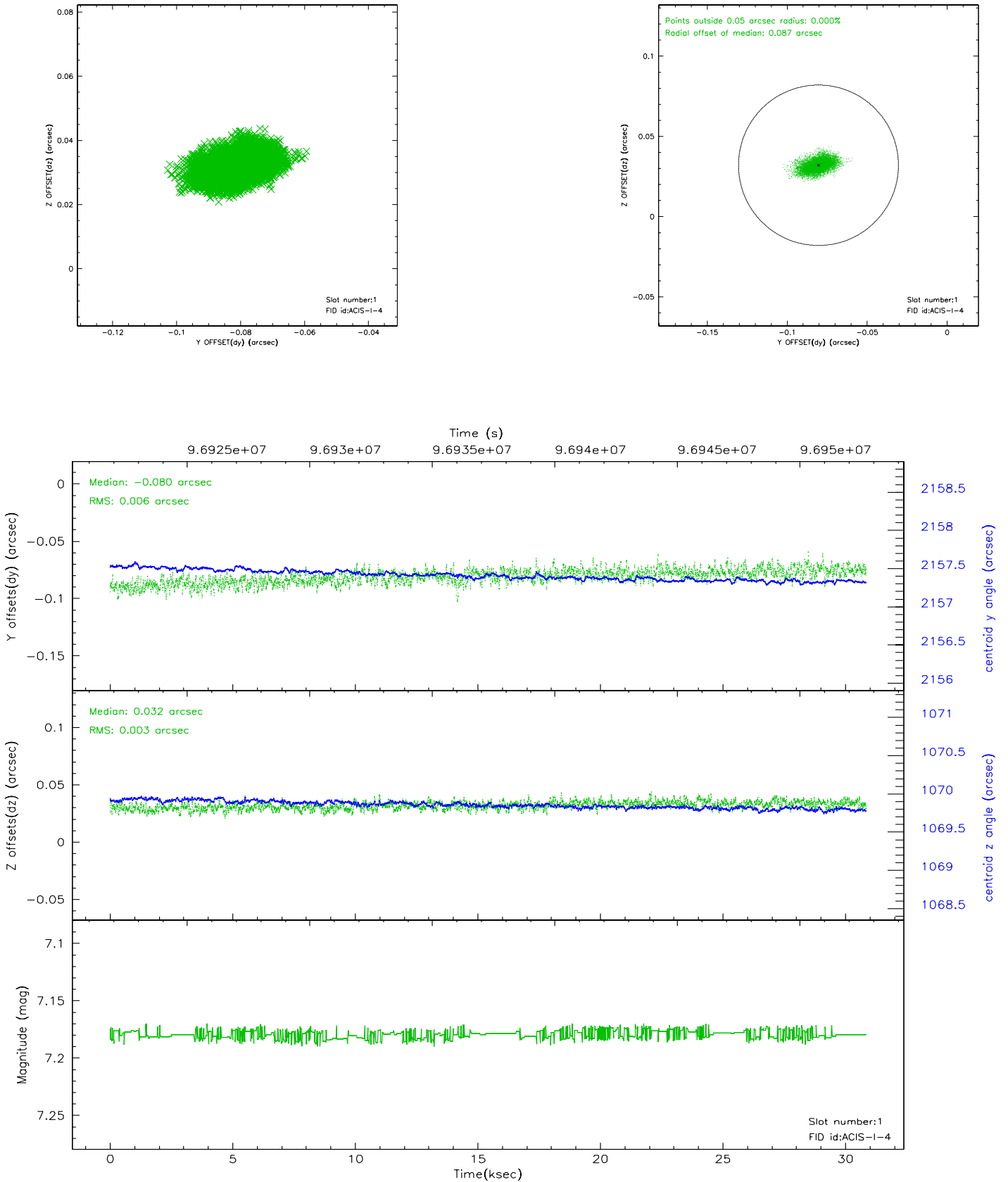


2.5 FID Slots

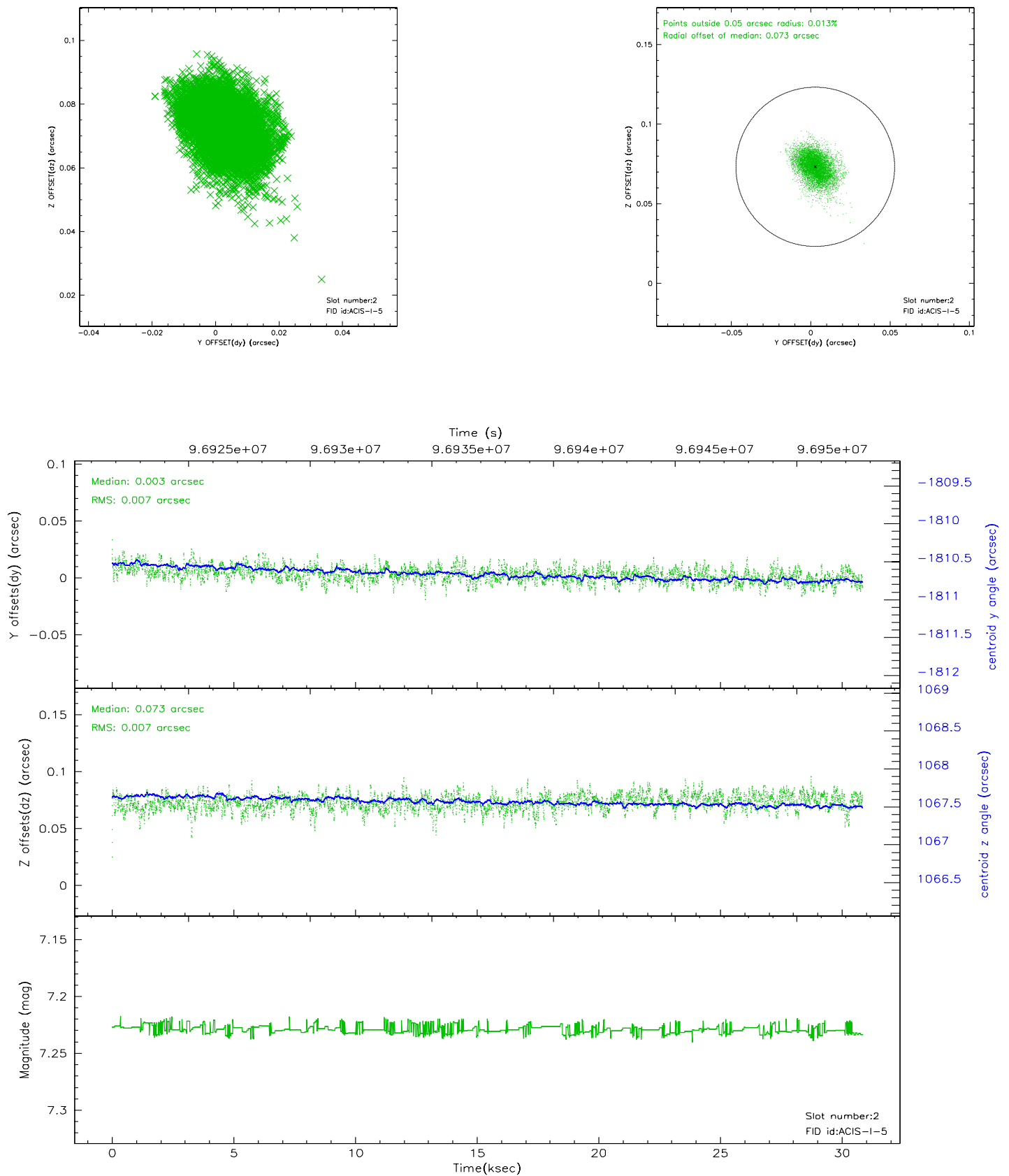
2.5.1 Slot 0



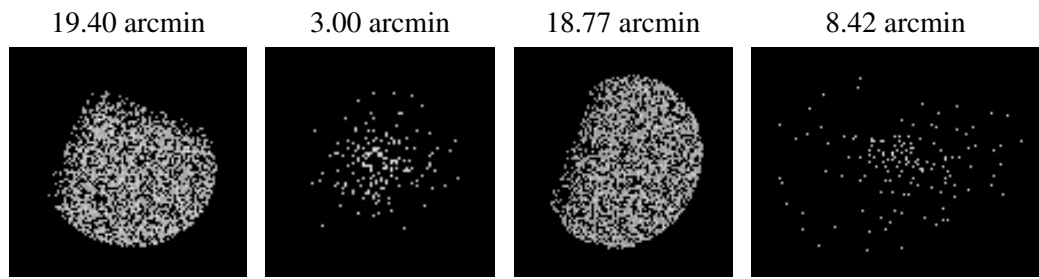
2.5.2 Slot 1



2.5.3 Slot 2



3 Point Sources



A Summary

A.1 Status

V&V Scientist	Beth Sundheim
V&V Date (YYYY-MM-DD)	2006.11.06
V&V Edition	1
V&V Disposition and Status	OK
V&V Charge Time	29.942

A.2 Comments