

V&V Reference Report

L2 ASCDS Version : 7.6.10

Observation 2239 - L2 Version 001
Chandra X-Ray Center

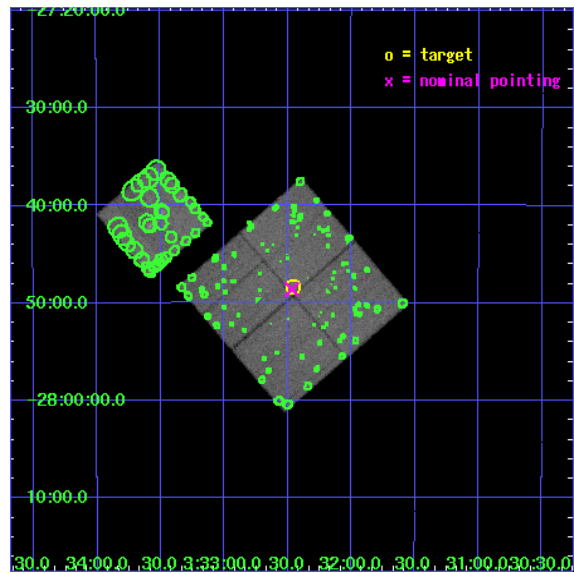
L2 Processing Date : Jun 22 2007

Contents

1	Front	2
2	OBI	3
2.1	OBI	3
2.1.1	Images	3
2.1.2	Bias	3
2.1.3	Parameters	4
2.1.4	Events	4
2.2	Compared Parameters	5
2.3	Aspect	6
2.4	Star Slots	9
2.4.1	Slot 3	9
2.4.2	Slot 4	10
2.4.3	Slot 5	11
2.4.4	Slot 6	12
2.4.5	Slot 7	13
2.5	FID Slots	14
2.5.1	Slot 0	14
2.5.2	Slot 1	15
2.5.3	Slot 2	16
3	Point Sources	17
A	Summary	18
A.1	Status	18
A.2	Comments	18

1 Front

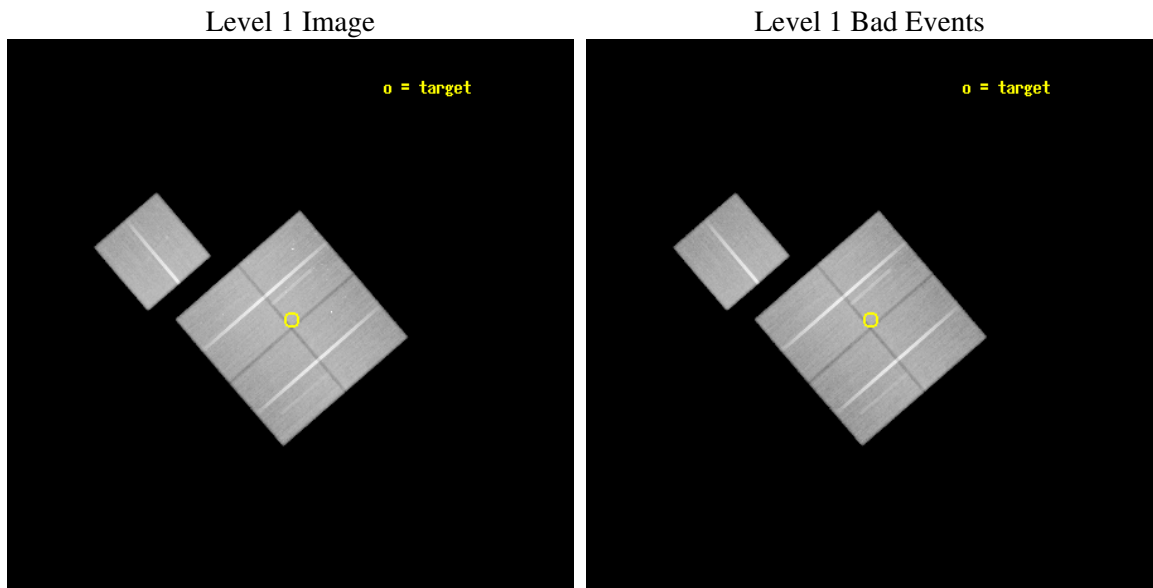
seq_num	900066
obs_id	2239
title	AN ULTRADEEP SURVEY IN THE CHANDRA DEEP FIELD SOUTH
observer	PROF. RICCARDO GIACCONI
object	CDFS
dtcycle	0
cycle	P
ra_targ	53.114583
dec_targ	-27.806389
ra_nom	53.116985072561
dec_nom	-27.810713190983
roll_nom	319.20980857857
revision	2
ontime	132574.43593404
livetime	130842.25332868
ontime0	132577.57686436
ontime1	132586.99974507
ontime2	132586.99974507
ontime3	132574.43593404
ontime6	132574.43589413
l2events	391532



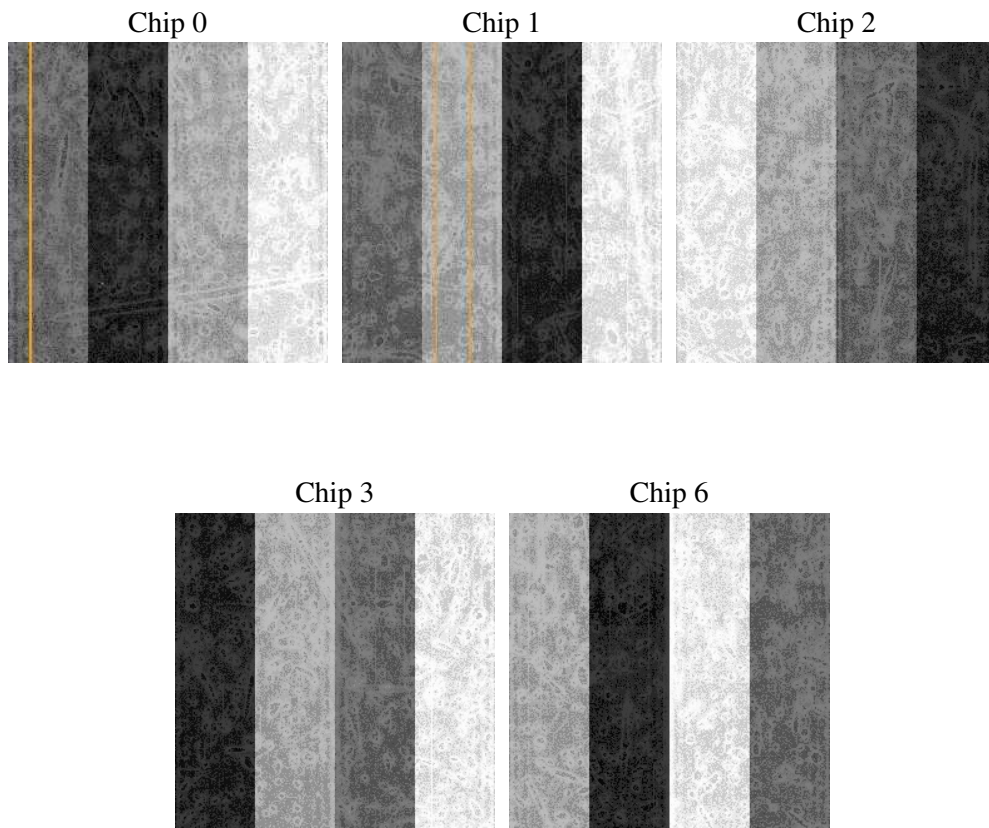
2 OBI

2.1 OBI

2.1.1 Images



2.1.2 Bias



2.1.3 Parameters

obi_num	0
ascdsver	7.6.10
caldbver	3.4.0
date	2007-06-22T07:42:17
revision	2

sched_exp_time	132446.326000
ontime	132574.43593404
ontime0	132577.57686436
ontime1	132586.99974507
ontime2	132586.99974507
ontime3	132574.43593404
ontime6	132574.43589413
l1events	3888513

2.1.4 Events

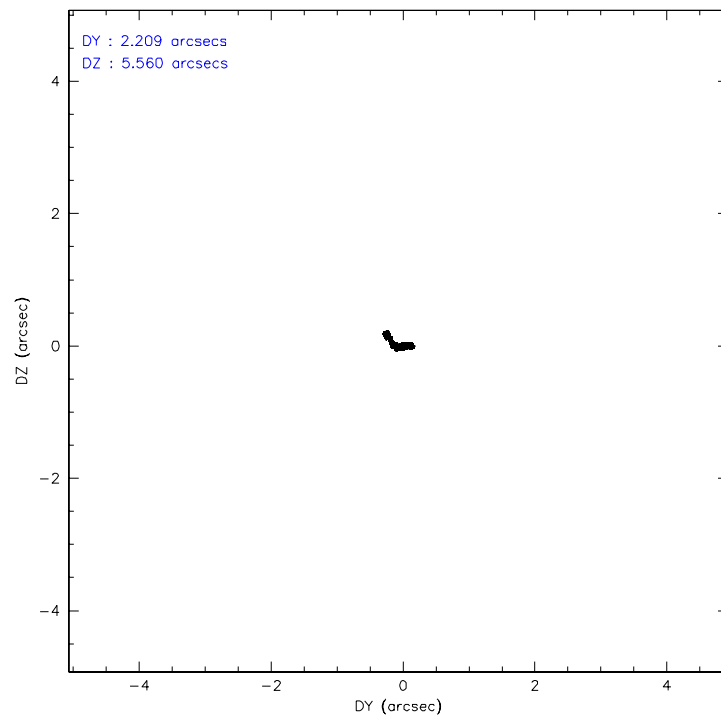
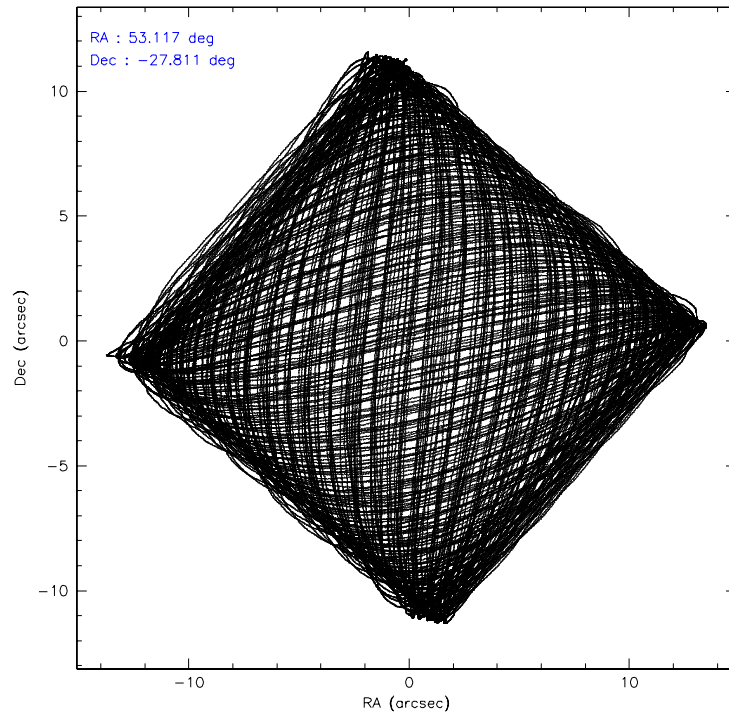
	ccd 0	ccd 1	ccd 2	ccd 3	ccd 6
level 1 events	729421	740237	809083	811683	798089
rejected events	639969	643981	720614	720384	707546
rejected %	87%	86%	89%	88%	88%

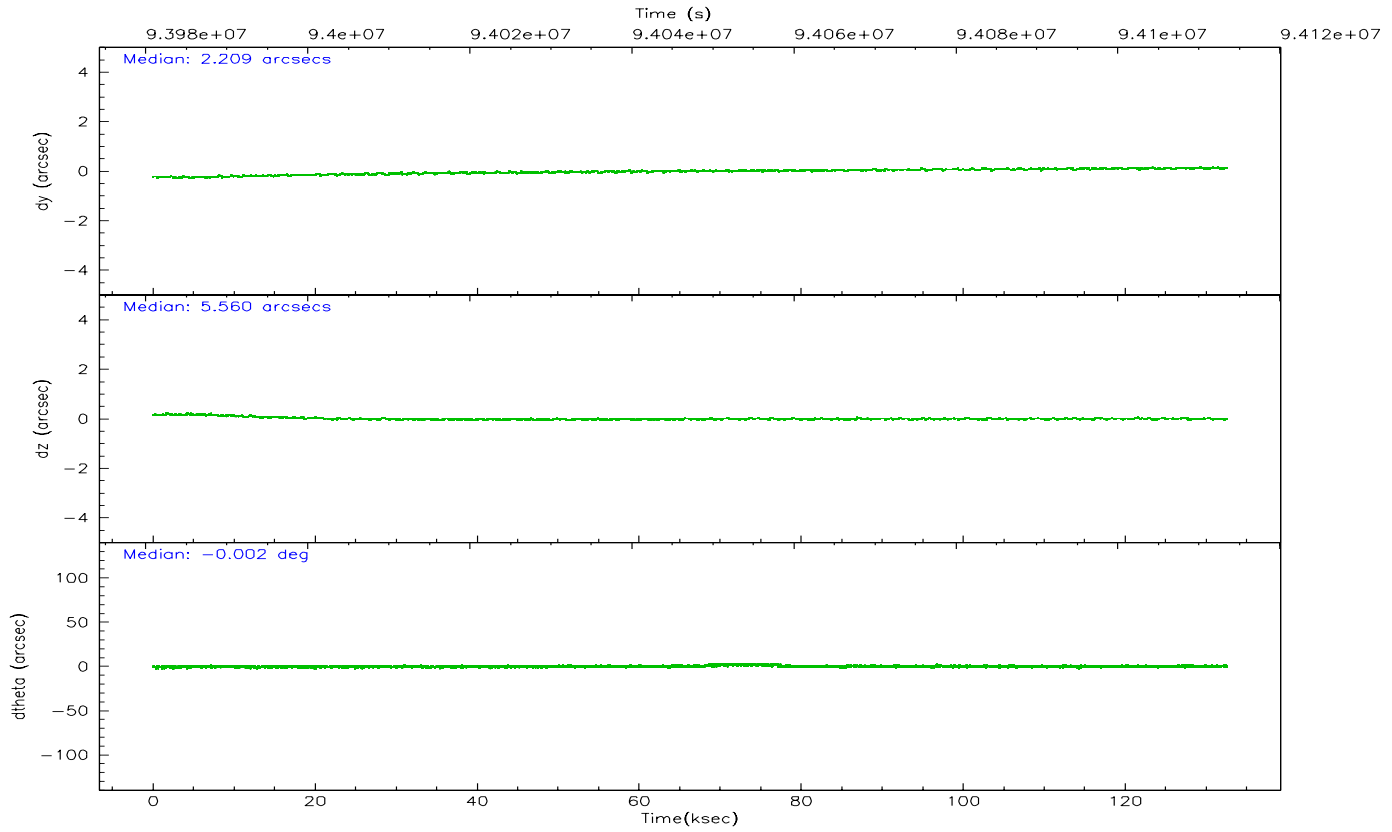
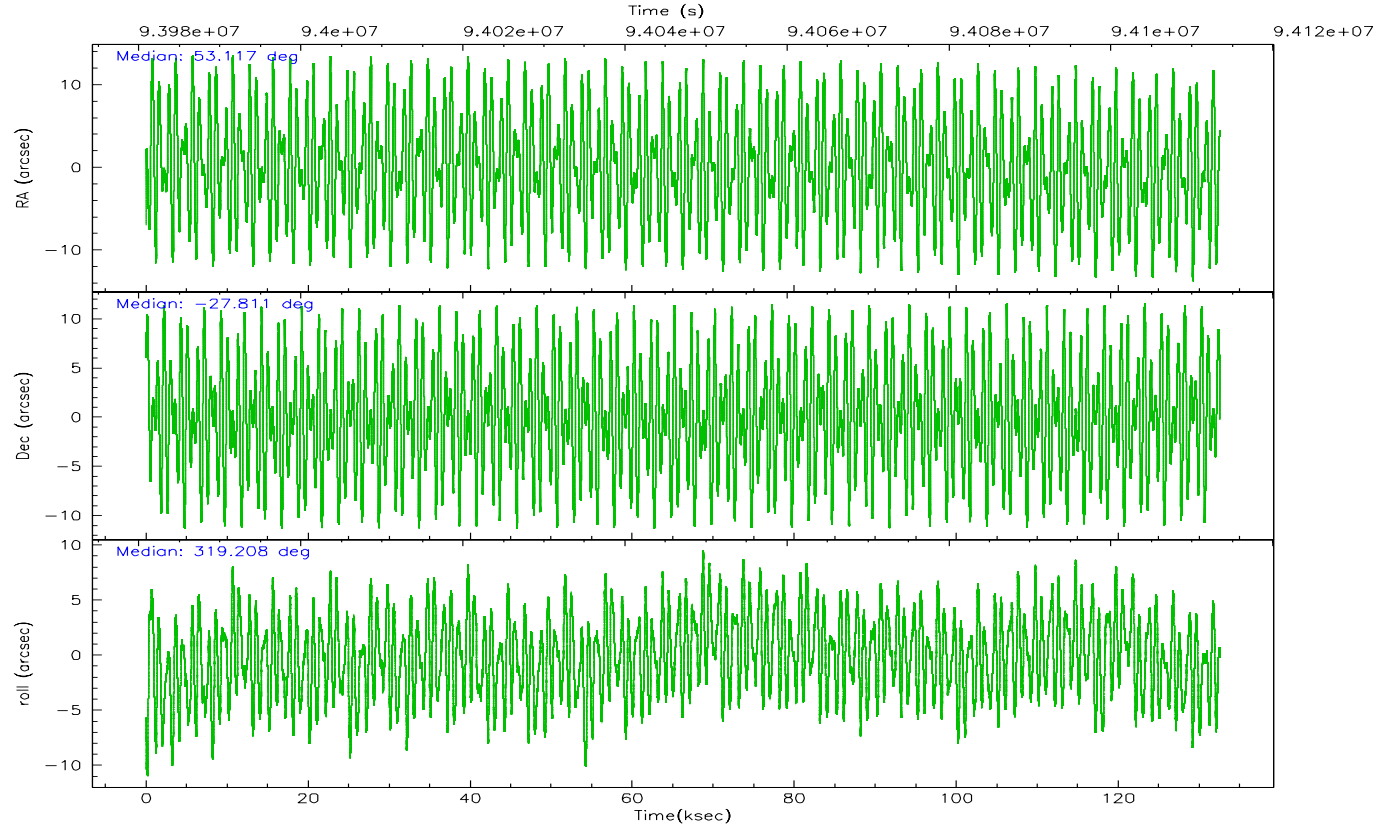
	ccd 0	ccd 1	ccd 2	ccd 3	ccd 6
grade 0 events	46671	48509	47310	48927	46894
	6%	6%	5%	6%	5%
grade 1 events	409	403	357	400	357
	0%	0%	0%	0%	0%
grade 2 events	21776	22509	21424	20683	21117
	2%	3%	2%	2%	2%
grade 3 events	10049	10912	9220	9529	9951
	1%	1%	1%	1%	1%
grade 4 events	9292	10811	9184	9837	10020
	1%	1%	1%	1%	1%
grade 5 events	27875	29964	27136	30073	32511
	3%	4%	3%	3%	4%
grade 6 events	18121	19772	17495	18010	19770
	2%	2%	2%	2%	2%
grade 7 events	595228	597357	676957	674224	657469
	81%	80%	83%	83%	82%

2.2 Compared Parameters

Parameter	Planned	Actual	Parameter	Planned	Actual
Instrument	ACIS	ACIS	Obspar format version number	6	6
Detector	ACIS-01236	ACIS-01236	Obspar file type	PREDICTED	ACTUAL
Grating	NONE	NONE	Obspar update status	NONE	UPDATED
Data mode	FAINT	FAINT	Number of optional ACIS chips dropped	0	0
Observation mode	POINTING	POINTING	On-chip summing requested	N	N
Pointing RA	53.086468	53.11698507256078	Subarray requested	NONE	NONE
Pointing Dec	-27.805526	-27.81071319098254	Alternating exposures requested	N	N
Pointing Roll	318.986883	319.2098085785703	Primary exposure time	0.000000	3.1
SIM focus pos (mm)	-0.782348	-0.7809083437167272			
SIM defocus (mm)	0	0.001439871863259334			
SIM translation stage pos (mm)	-233.592463	-233.5874344608287			
SIM translation stage offset (mm)	0	-0.005018542100998502			
Observation start time	93981034.184000	93979681.01140299			
Observation start date	2000-12-23T17:49:30	2000-12-23T17:28:01			
Observation end time	94113480.184000	94113794.579036			
Observation end date	2000-12-25T06:36:56	2000-12-25T06:43:14			
Read mode	TIMED	TIMED			

2.3 Aspect



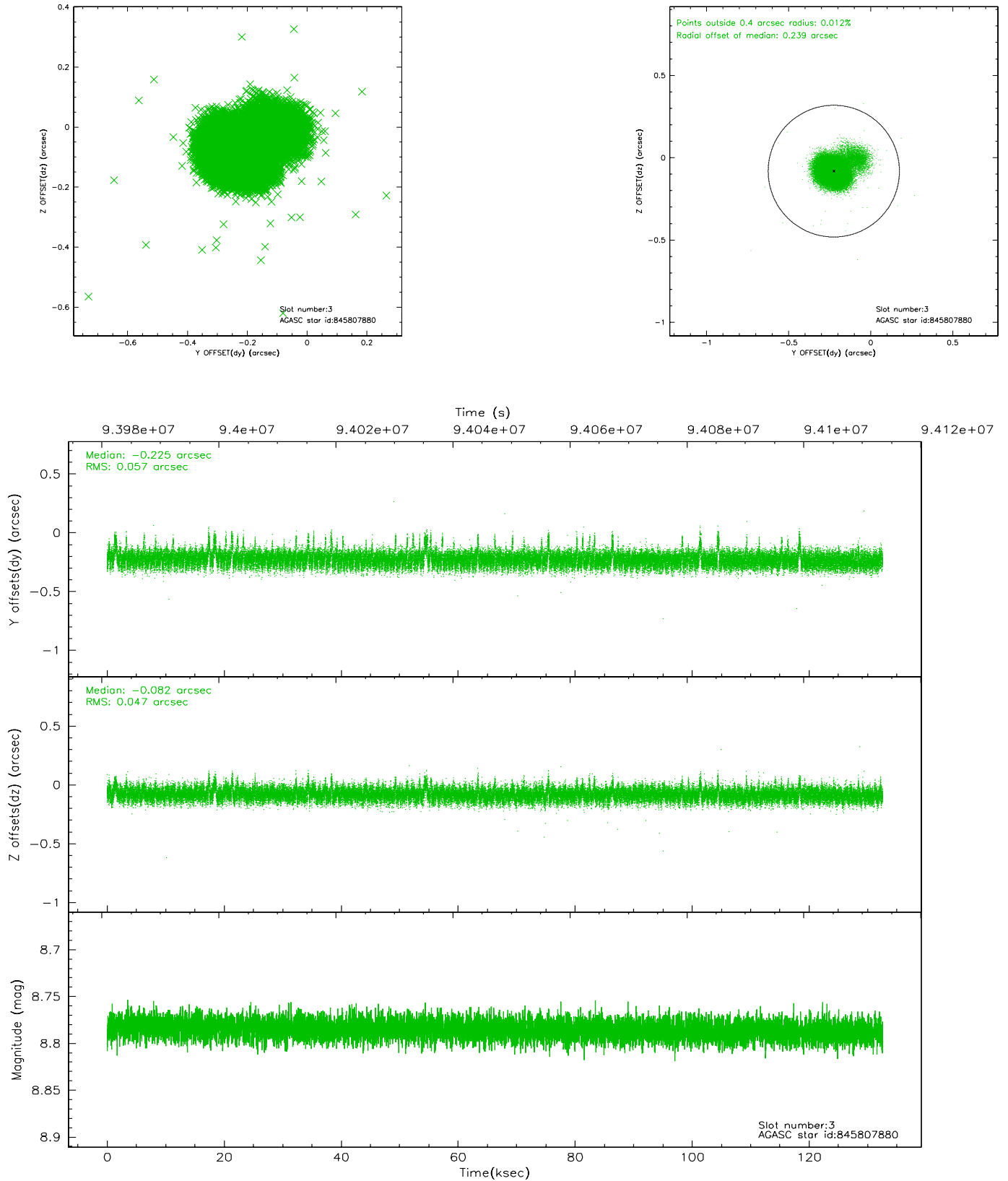


Slot Statistics

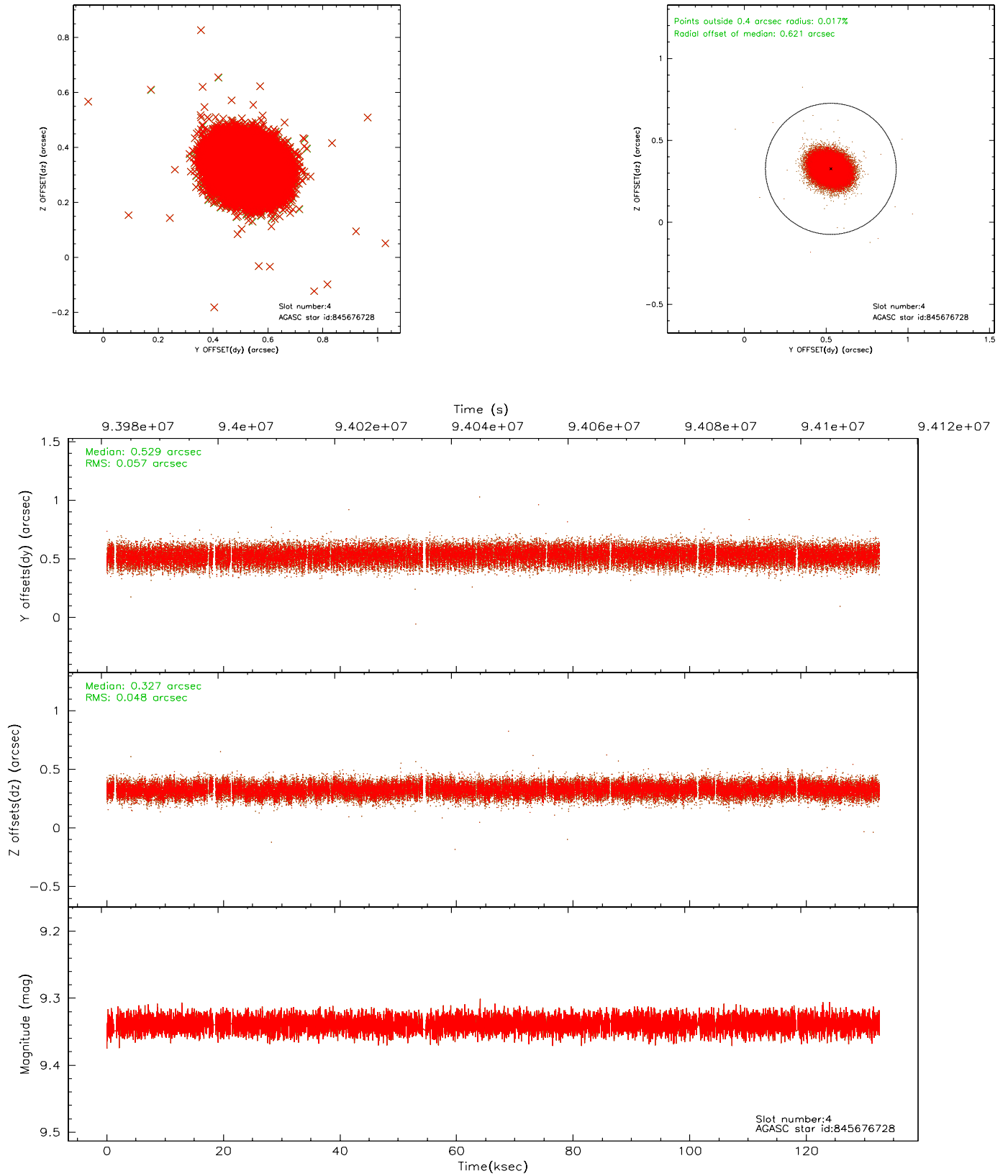
slot	status	id	mag	n_pts	med_dy	med_dz	dr1	dr2	ra	dec	mean_y	mean_z
0	FID	ACIS-I-2	7.15	32335	-0.012	-0.019	0.014	0.024	0.000000	0.000000	-756.56	-835.31
1	FID	ACIS-I-4	7.19	32332	-0.077	0.022	0.012	0.024	0.000000	0.000000	2157.48	1070.96
2	FID	ACIS-I-5	7.23	32336	-0.014	0.066	0.010	0.018	0.000000	0.000000	-1810.52	1068.73
3	GUIDE	845807880	8.79	64656	-0.225	-0.082	0.073	0.135	53.382027	-27.886093	900.90	397.60
4	BAD	845676728	9.34	60579	0.529	0.327	0.079	0.129	52.877179	-27.664318	-836.89	-54.62
5	GUIDE	845676936	9.50	64646	-0.181	-0.196	0.086	0.152	52.843773	-27.880153	-405.65	-710.08
6	GUIDE	845808520	10.20	64630	-0.174	0.056	0.124	0.212	53.575292	-27.720766	977.51	1250.48
7	GUIDE	845816344	9.26	64644	0.078	-0.090	0.108	0.182	53.137522	-28.675689	2178.10	-2257.80

2.4 Star Slots

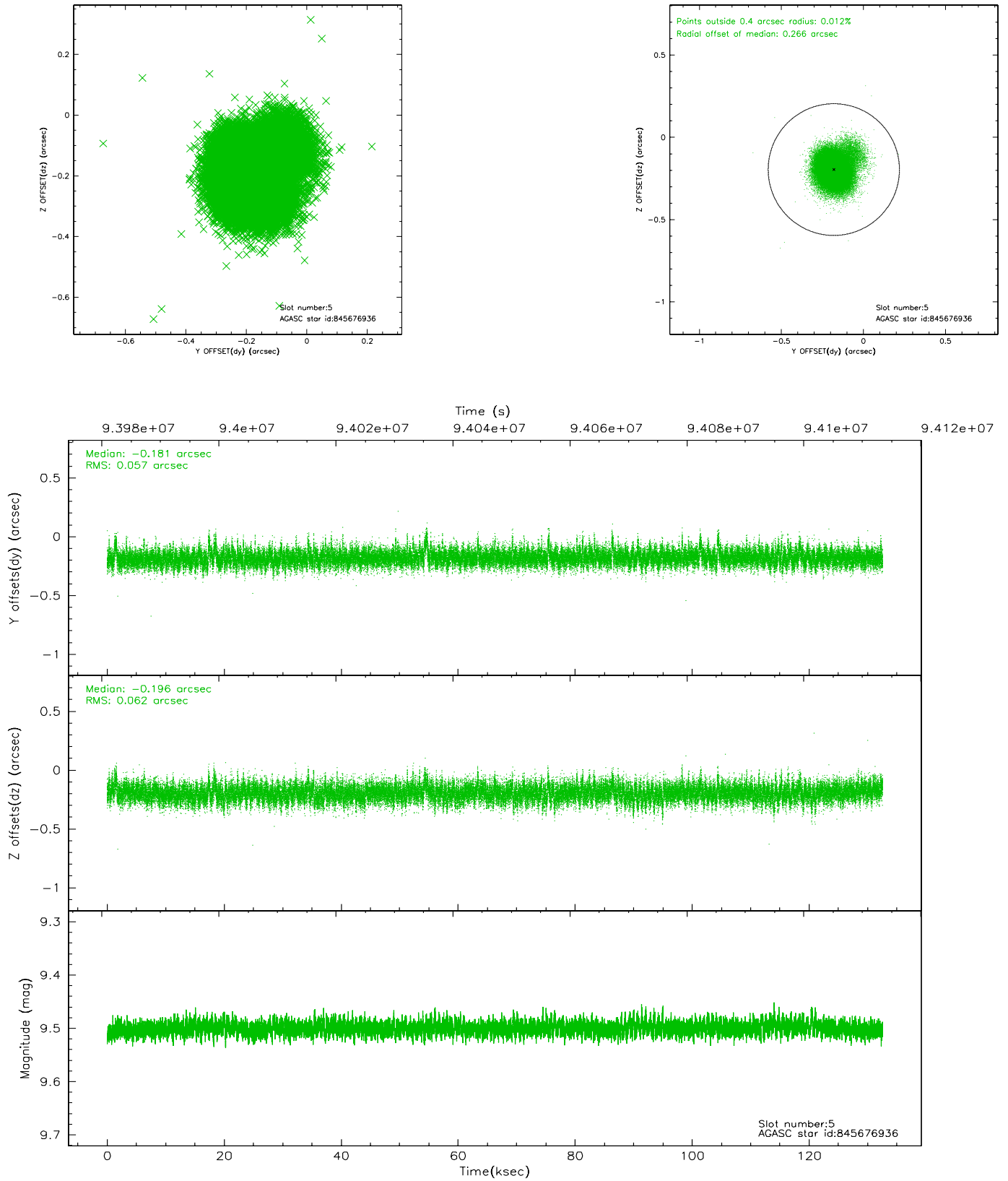
2.4.1 Slot 3



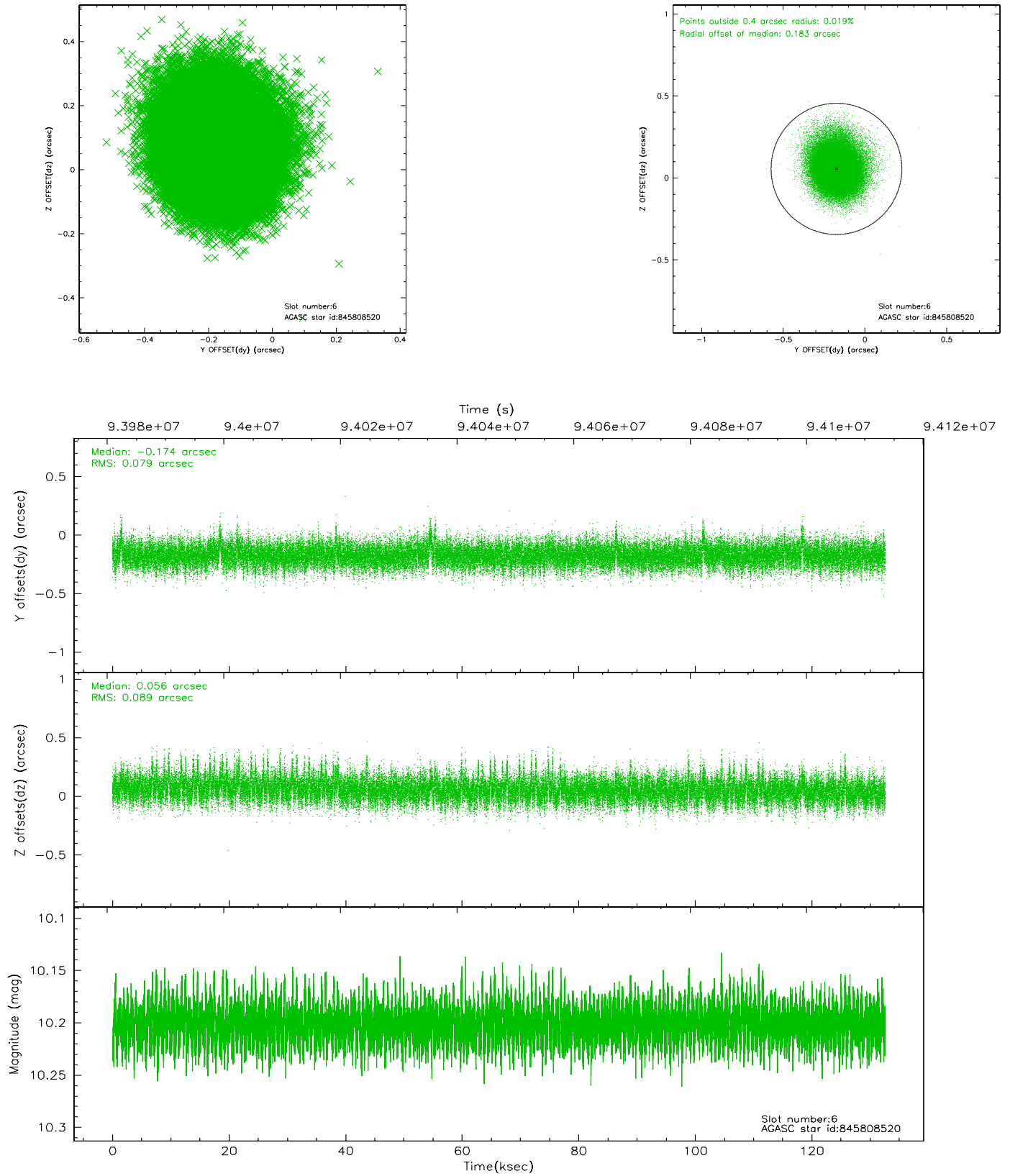
2.4.2 Slot 4



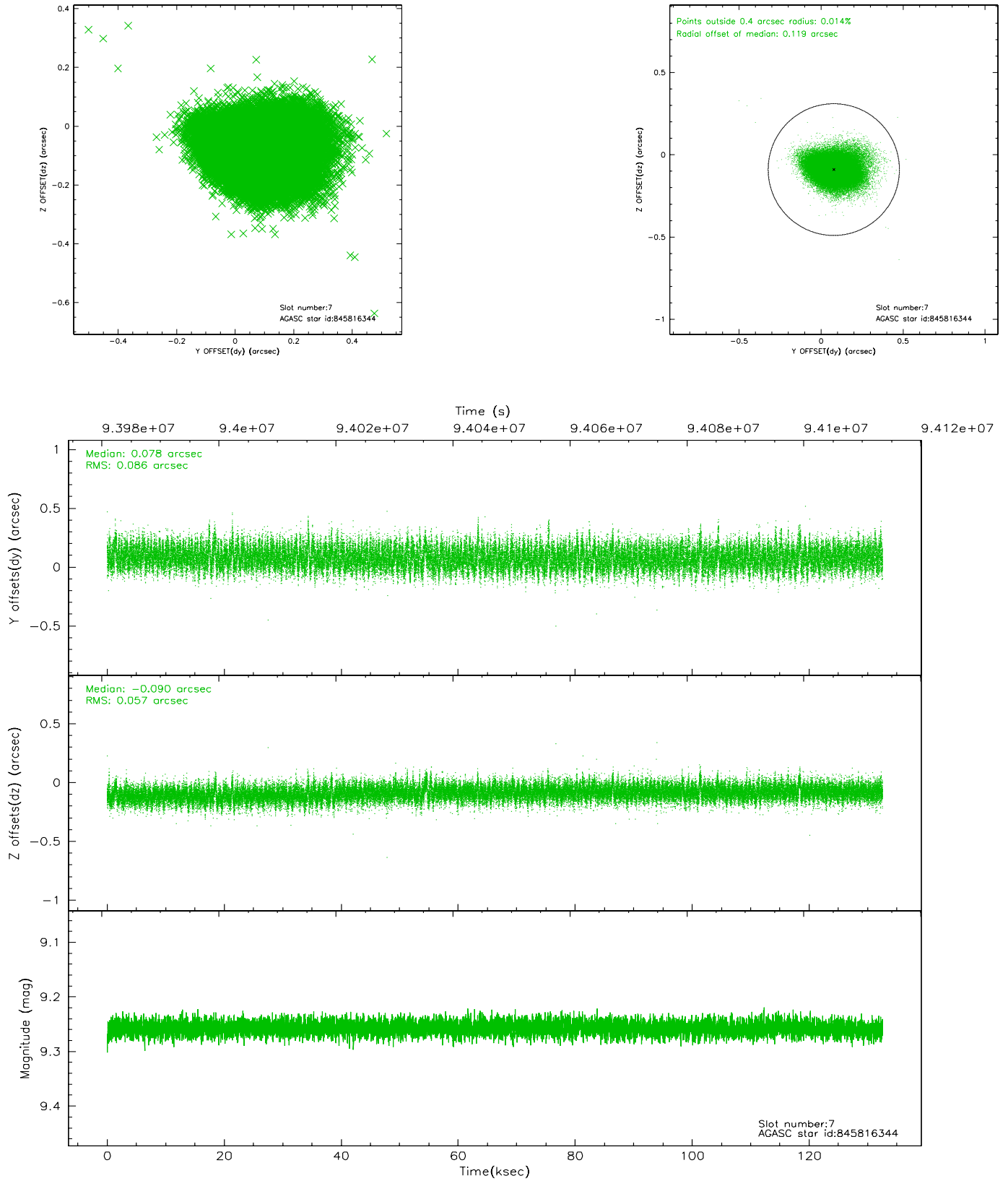
2.4.3 Slot 5



2.4.4 Slot 6

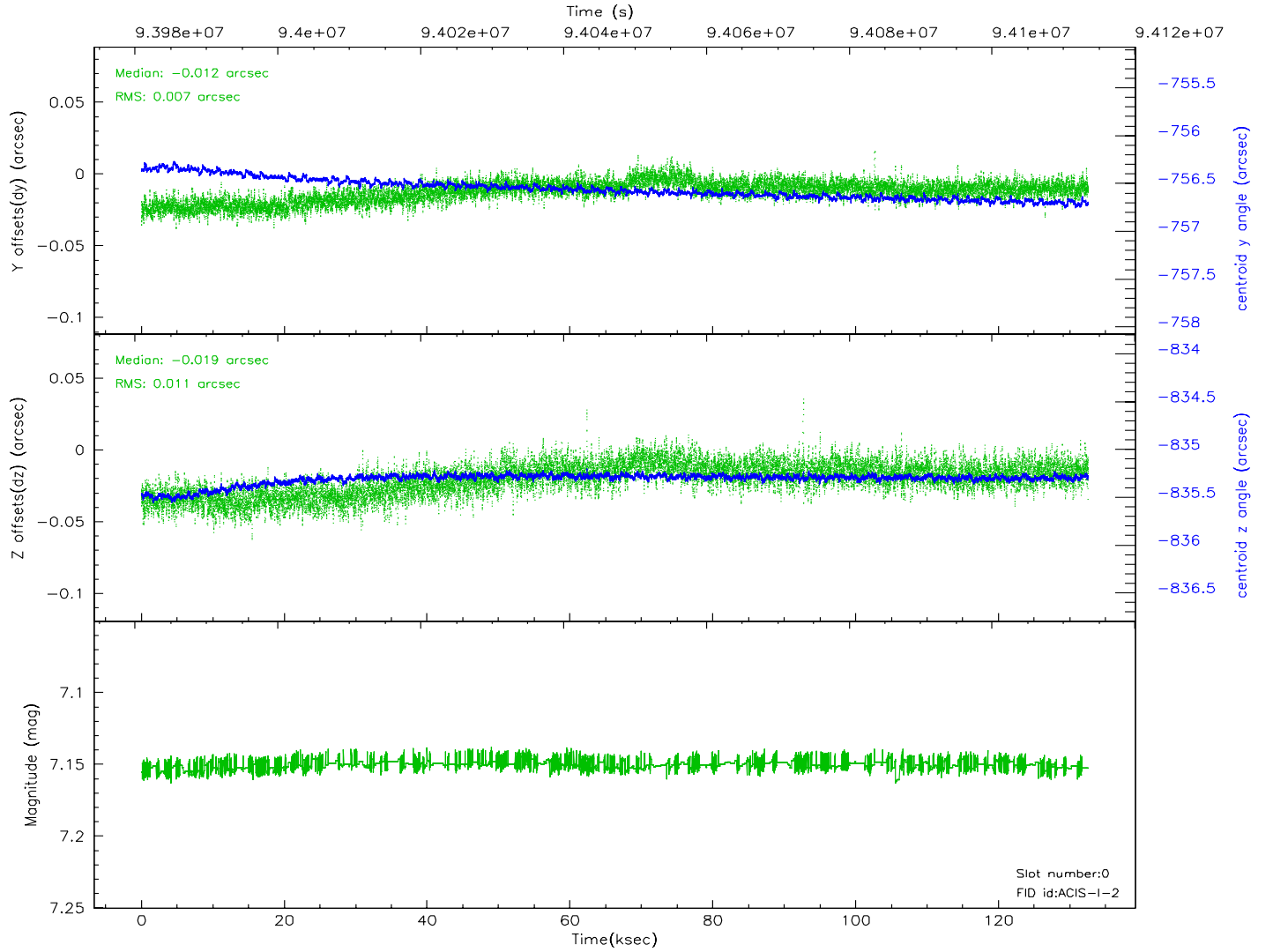
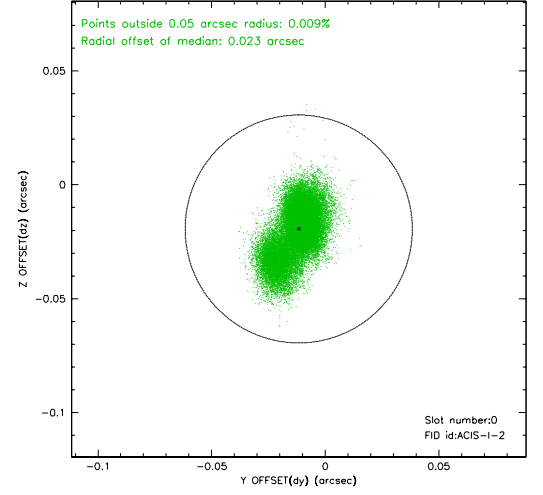
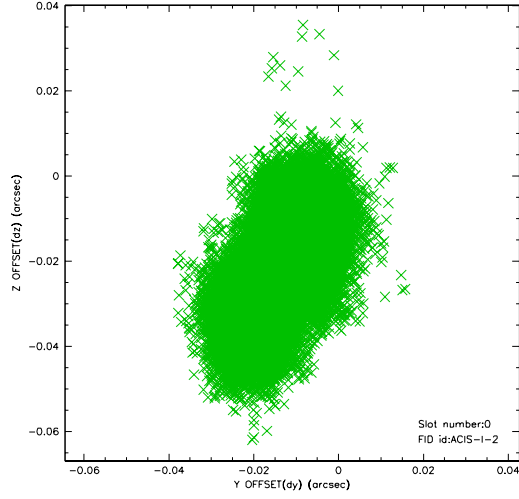


2.4.5 Slot 7

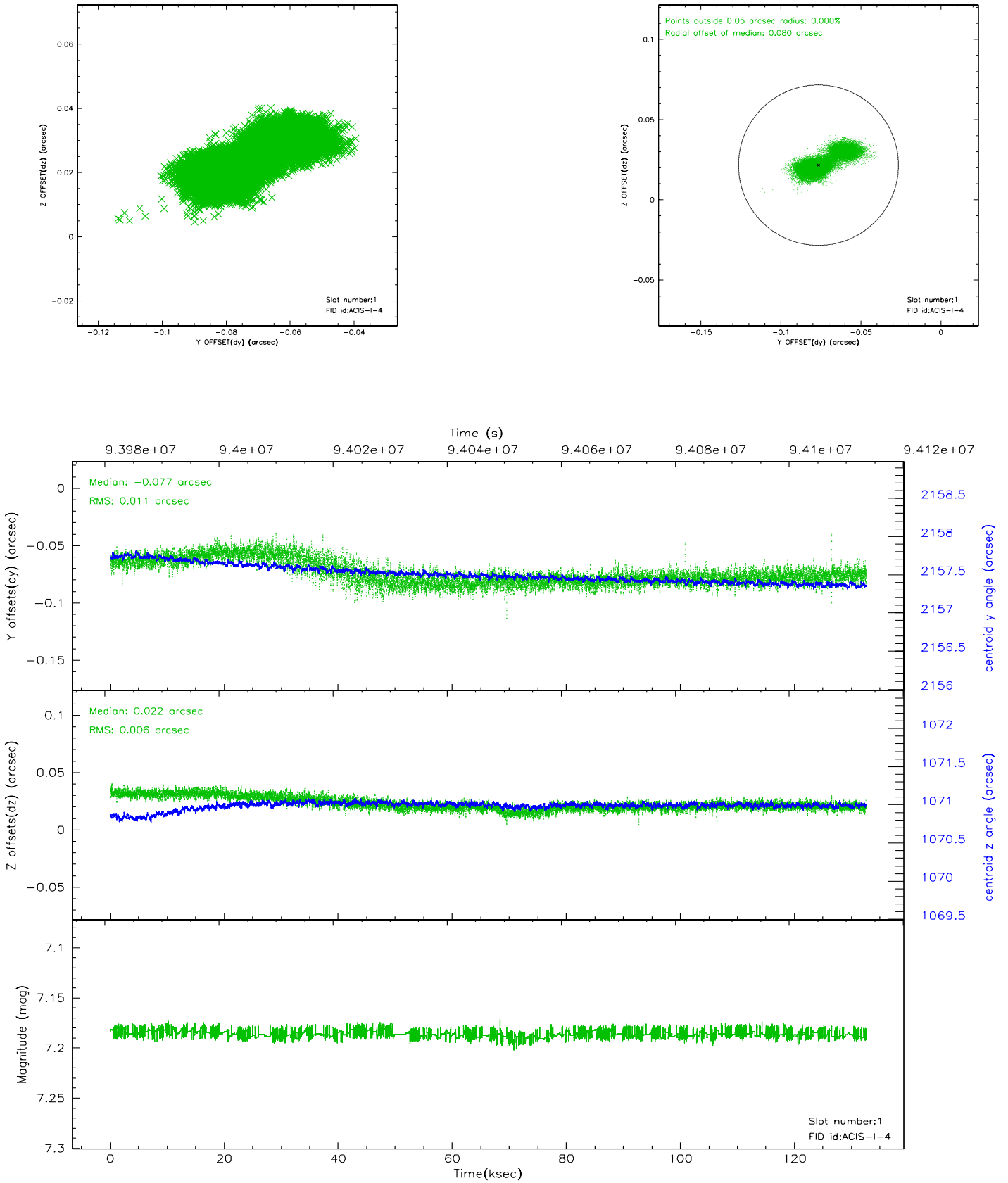


2.5 FID Slots

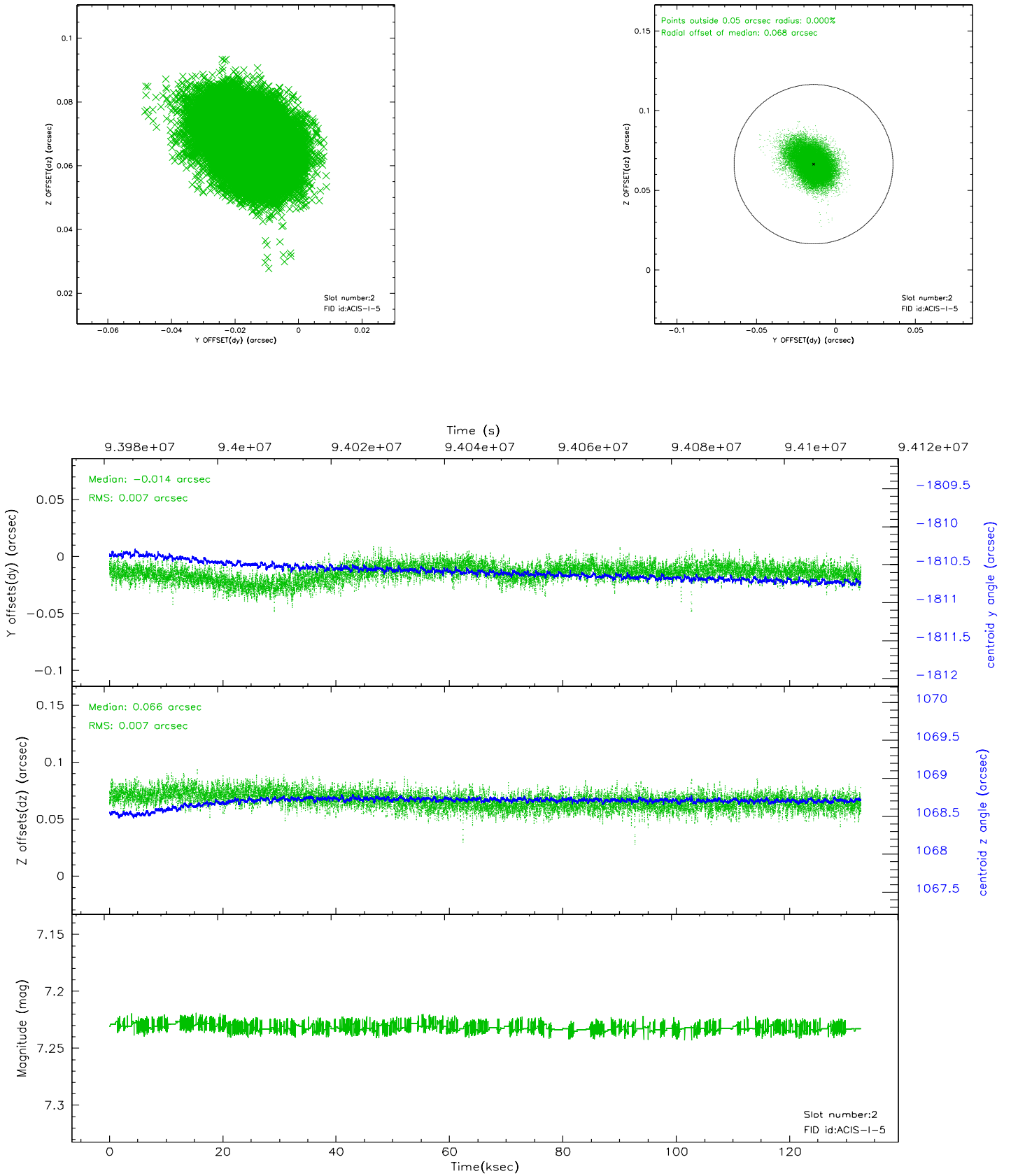
2.5.1 Slot 0



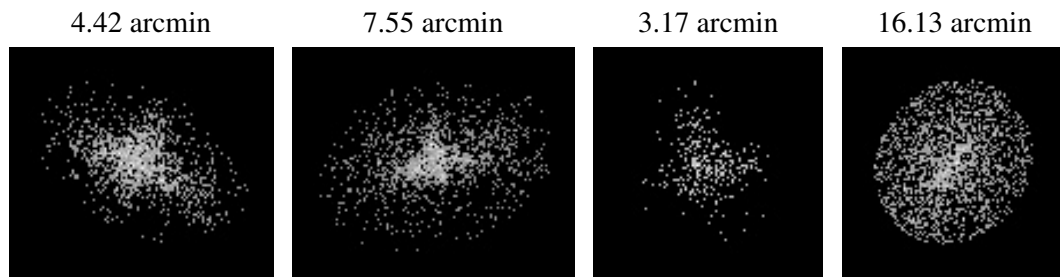
2.5.2 Slot 1



2.5.3 Slot 2



3 Point Sources



A Summary

A.1 Status

V&V Scientist	Jen Lauer
V&V Date (YYYY-MM-DD)	2007.06.22
V&V Edition	1
V&V Disposition and Status	OK
V&V Charge Time	132.469

A.2 Comments

The guide star in slot 4 was dropped from the aspect solution due to poor data quality; it was only tracked for 94% of the observation. The aspect solution is not expected to be degraded by removing one star from the solution.