

V&V Reference Report

L2 ASCDS Version : 7.6.9

Observation 2237 - L2 Version 001
Chandra X-Ray Center

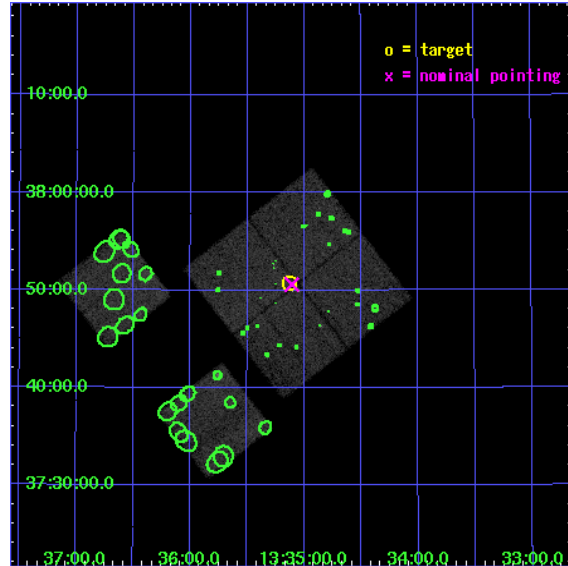
L2 Processing Date : Nov 28 2006

Contents

1	Front	2
2	OBI	3
2.1	OBI	3
2.1.1	Images	3
2.1.2	Bias	3
2.1.3	Parameters	4
2.1.4	Events	4
2.2	Compared Parameters	5
2.3	Aspect	6
2.4	Star Slots	9
2.4.1	Slot 3	9
2.4.2	Slot 4	10
2.4.3	Slot 5	11
2.4.4	Slot 6	12
2.4.5	Slot 7	13
2.5	FID Slots	14
2.5.1	Slot 0	14
2.5.2	Slot 1	15
2.5.3	Slot 2	16
3	Point Sources	17
A	Summary	18
A.1	Status	18
A.2	Comments	18

1 Front

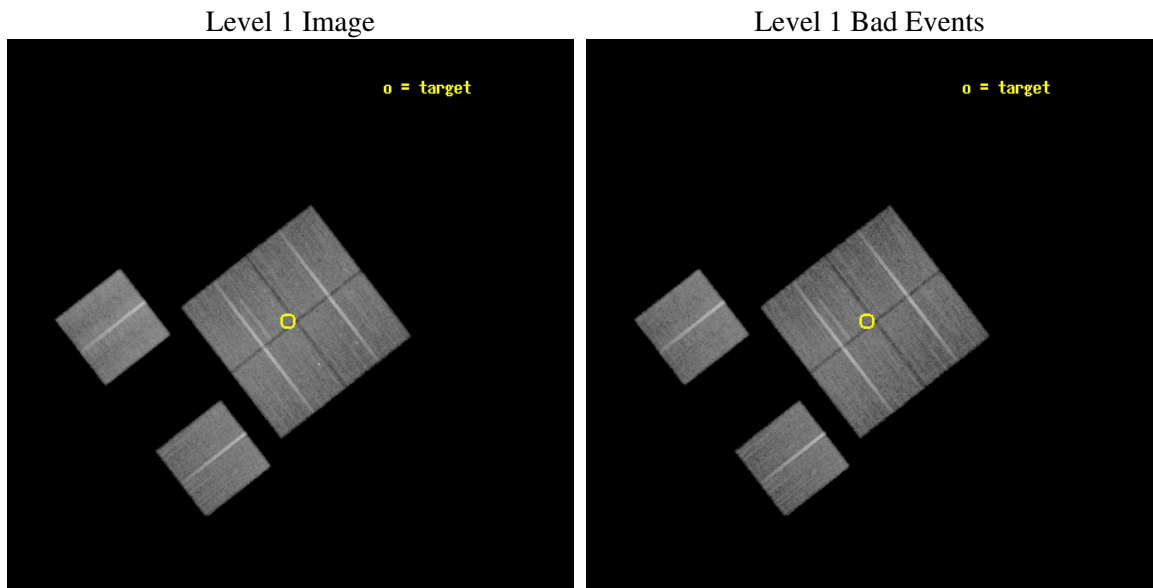
seq_num	900064
obs_id	2237
title	A COMBINED CHANDRA/XMM ATTACK ON THE ASTROPHYSICS OF THE HARD X-RAY BACKGROUND.
observer	Prof Ian McHardy
object	XMM 13HR - FIELD 2
dtcycle	0
cycle	P
ra_targ	203.782225
dec_targ	37.84568
ra_nom	203.77698430038
dec_nom	37.843388984604
roll_nom	232.20190312505
revision	2
ontime	30175.918047756
livetime	29793.812403679
ontime0	30179.159047946
ontime1	30182.40002811
ontime2	30179.159057871
ontime3	30175.918047756
ontime6	30182.40002811
ontime8	30182.40002811
l2events	118411



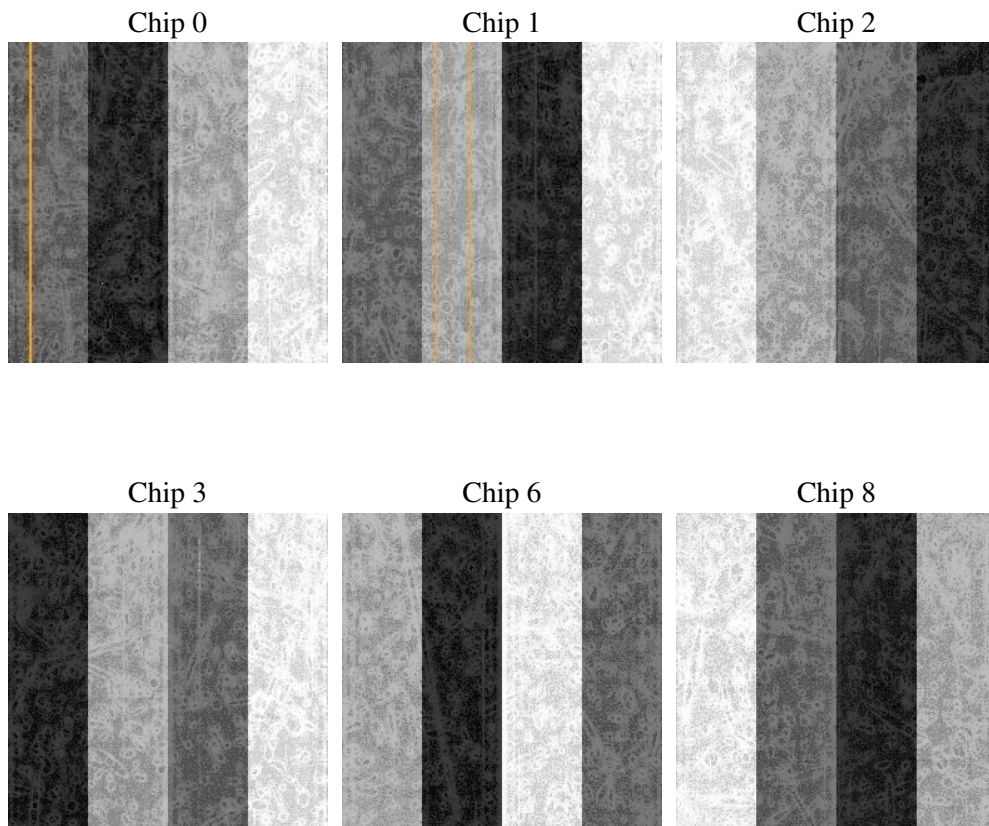
2 OBI

2.1 OBI

2.1.1 Images



2.1.2 Bias



2.1.3 Parameters

obi_num	1
ascdsver	7.6.9
caldsver	3.2.4
date	2006-11-28T04:32:56
revision	2

sched_exp_time	30425.000000
ontime	30180.181225553
ontime0	30186.663235828
ontime1	30189.90418607
ontime2	30186.663215831
ontime3	30180.181225553
ontime6	30189.904215991
ontime8	30186.663205922
l1events	1190611

2.1.4 Events

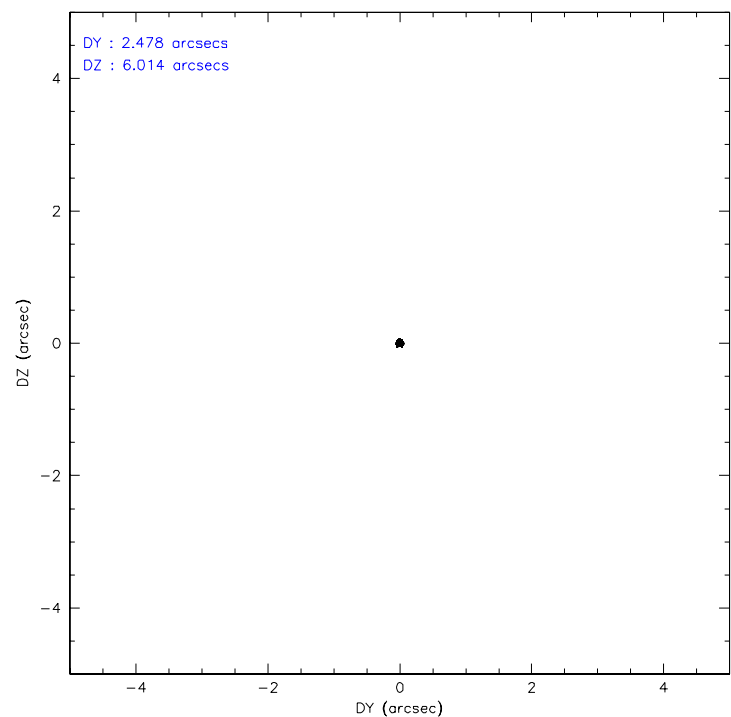
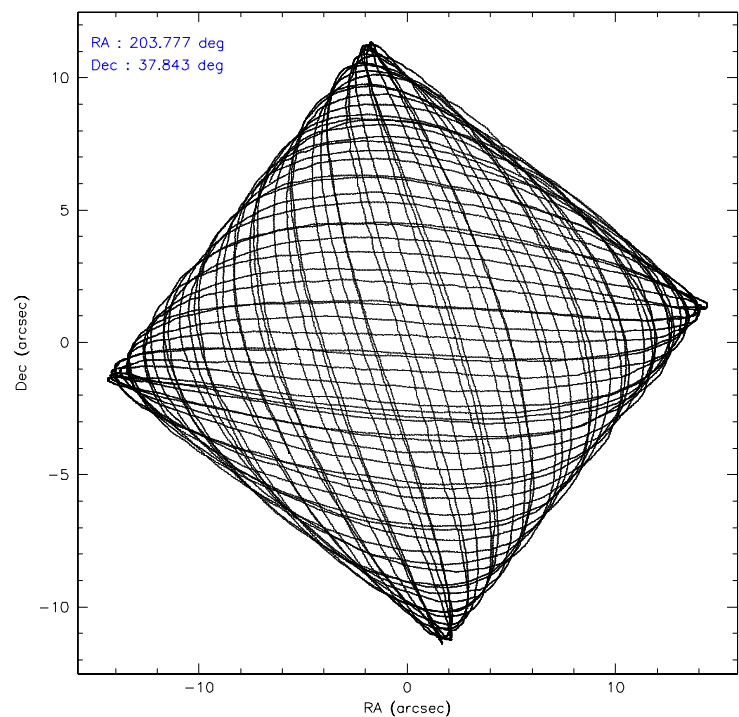
	ccd 0	ccd 1	ccd 2	ccd 3	ccd 6	ccd 8
level 1 events	175501	174703	197514	195685	194687	252521
rejected events	153510	151089	174603	173689	172440	202596
rejected %	87%	86%	88%	88%	88%	80%

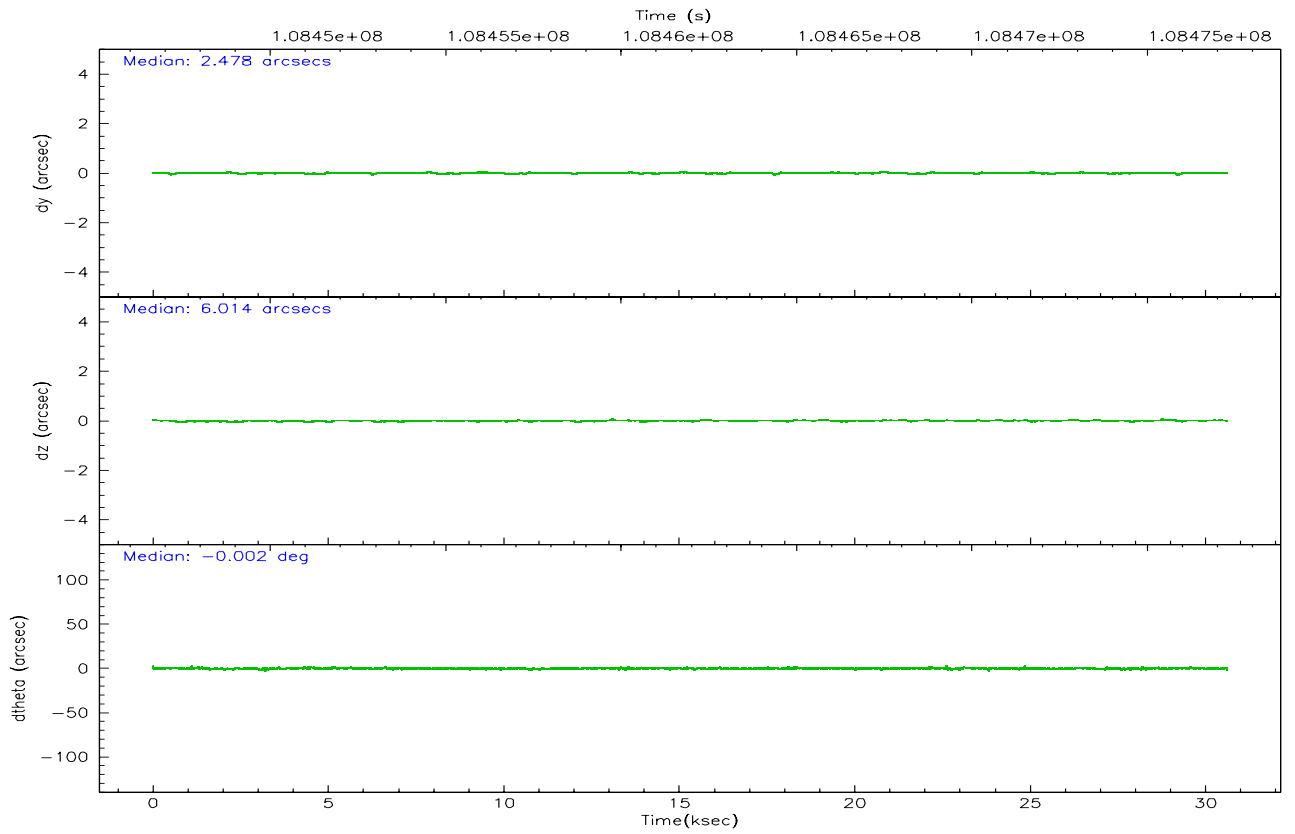
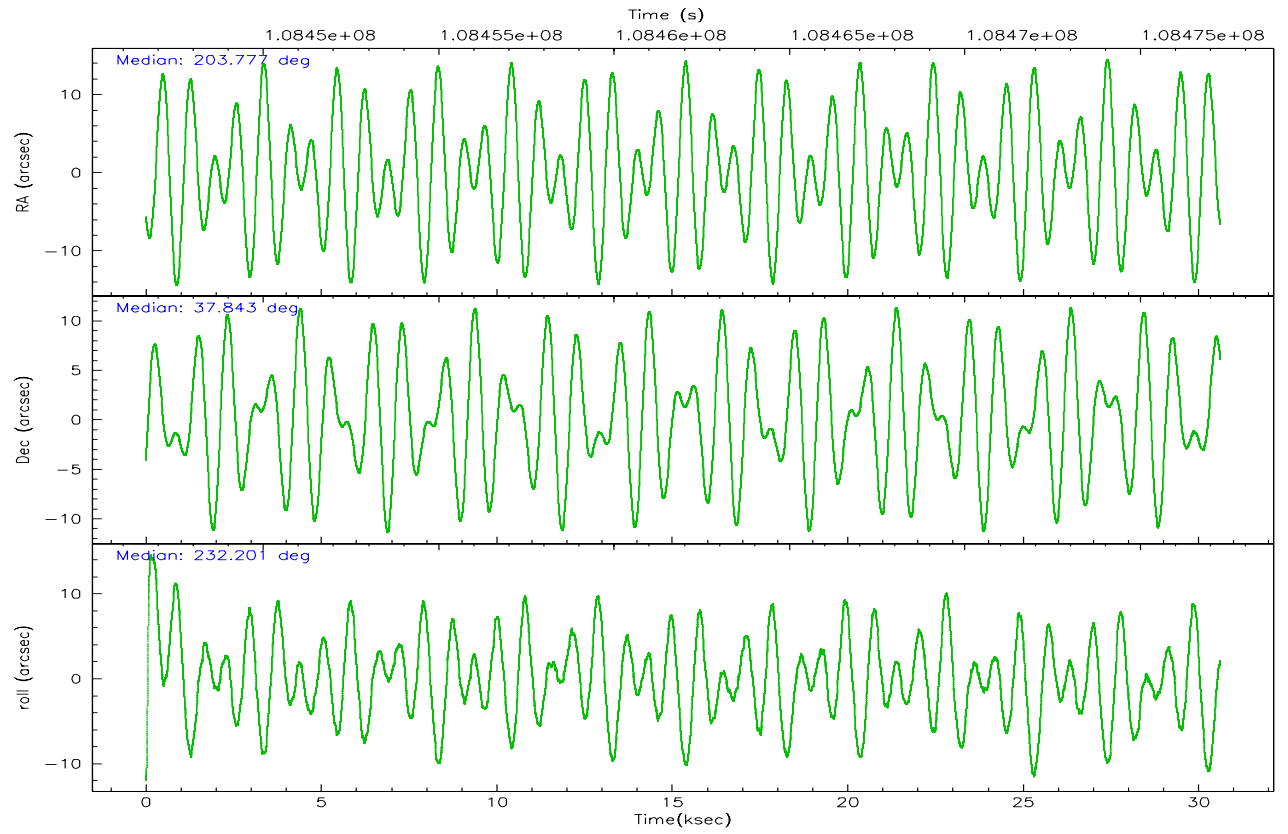
	ccd 0	ccd 1	ccd 2	ccd 3	ccd 6	ccd 8
grade 0 events	9264	9561	10364	9460	9169	15471
	5%	5%	5%	4%	4%	6%
grade 1 events	93	79	87	82	102	173
	0%	0%	0%	0%	0%	0%
grade 2 events	4646	4849	4698	4439	4371	10884
	2%	2%	2%	2%	2%	4%
grade 3 events	2219	2432	2032	2109	2184	5492
	1%	1%	1%	1%	1%	2%
grade 4 events	2018	2425	2024	2072	2190	5114
	1%	1%	1%	1%	1%	2%
grade 5 events	6668	7321	6454	7339	7915	10607
	3%	4%	3%	3%	4%	4%
grade 6 events	3845	4353	3805	3920	4339	12966
	2%	2%	1%	2%	2%	5%
grade 7 events	146748	143683	168050	166264	164417	191814
	83%	82%	85%	84%	84%	75%

2.2 Compared Parameters

Parameter	Planned	Actual	Parameter	Planned	Actual
Instrument	ACIS	ACIS	Obspar format version number	6	6
Detector	ACIS-012368	ACIS-012368	Obspar file type	PREDICTED	ACTUAL
Grating	NONE	NONE	Obspar update status	NONE	UPDATED
Data mode	VFAINT	VFAINT	Number of optional ACIS chips dropped	0	0
Observation mode	POINTING	POINTING	On-chip summing requested	N	N
Pointing RA	203.781662	203.7769843003803	Subarray requested	NONE	NONE
Pointing Dec	37.870558	37.84338898460427	Alternating exposures requested	N	N
Pointing Roll	231.990346	232.201903125051	Primary exposure time	0.000000	3.2
SIM focus pos (mm)	-0.782348	-0.7809083437167272			
SIM defocus (mm)	0	0.001439871863259334			
SIM translation stage pos (mm)	-233.592463	-233.5874344608287			
SIM translation stage offset (mm)	0	-0.005018542100998502			
Observation start time	108446845.184000	108446469.5581			
Observation start date	2001-06-09T04:06:21	2001-06-09T04:01:09			
Observation end time	108477270.184000	108477404.0593			
Observation end date	2001-06-09T12:33:26	2001-06-09T12:36:44			
Read mode	TIMED	TIMED			

2.3 Aspect



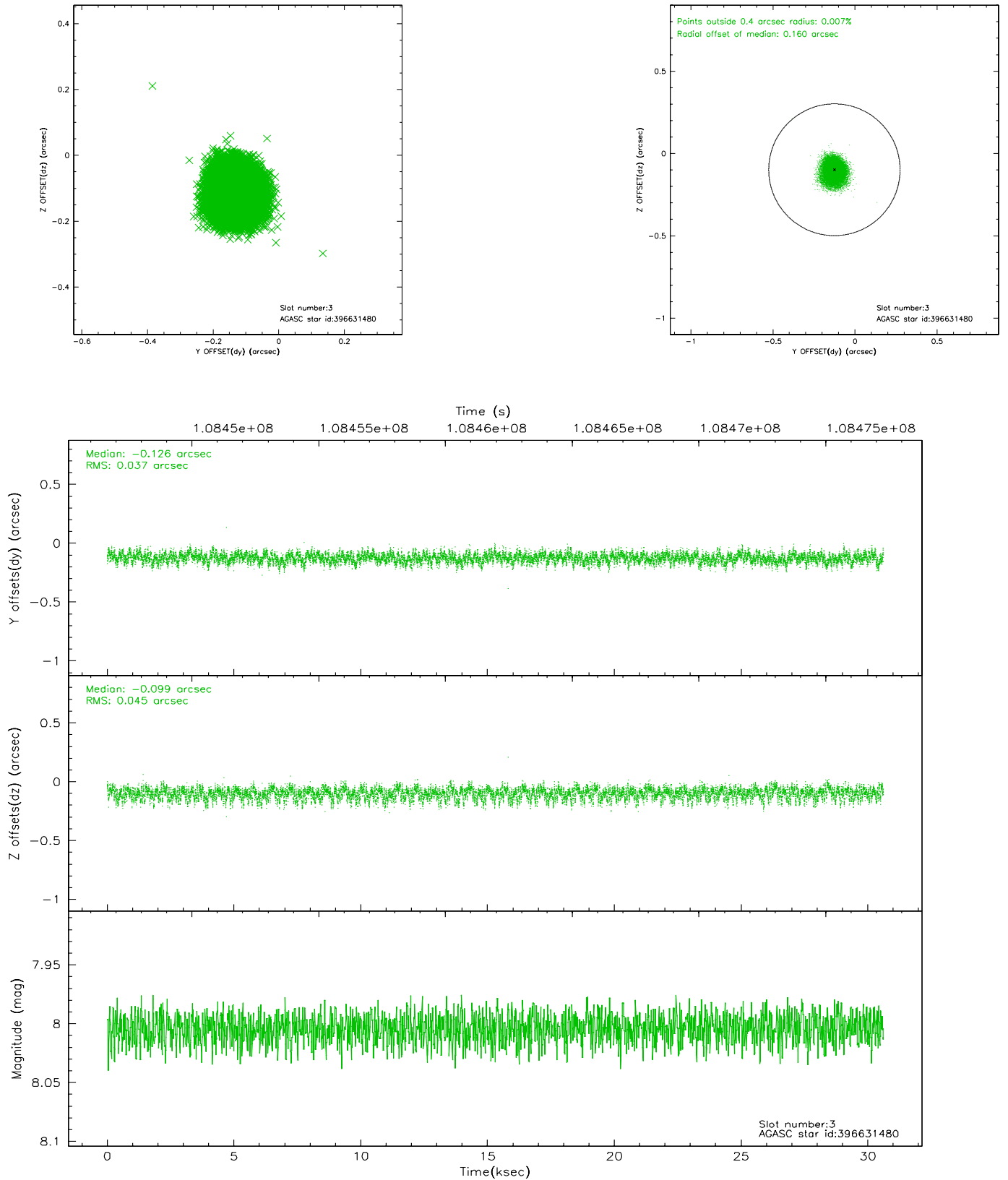


Slot Statistics

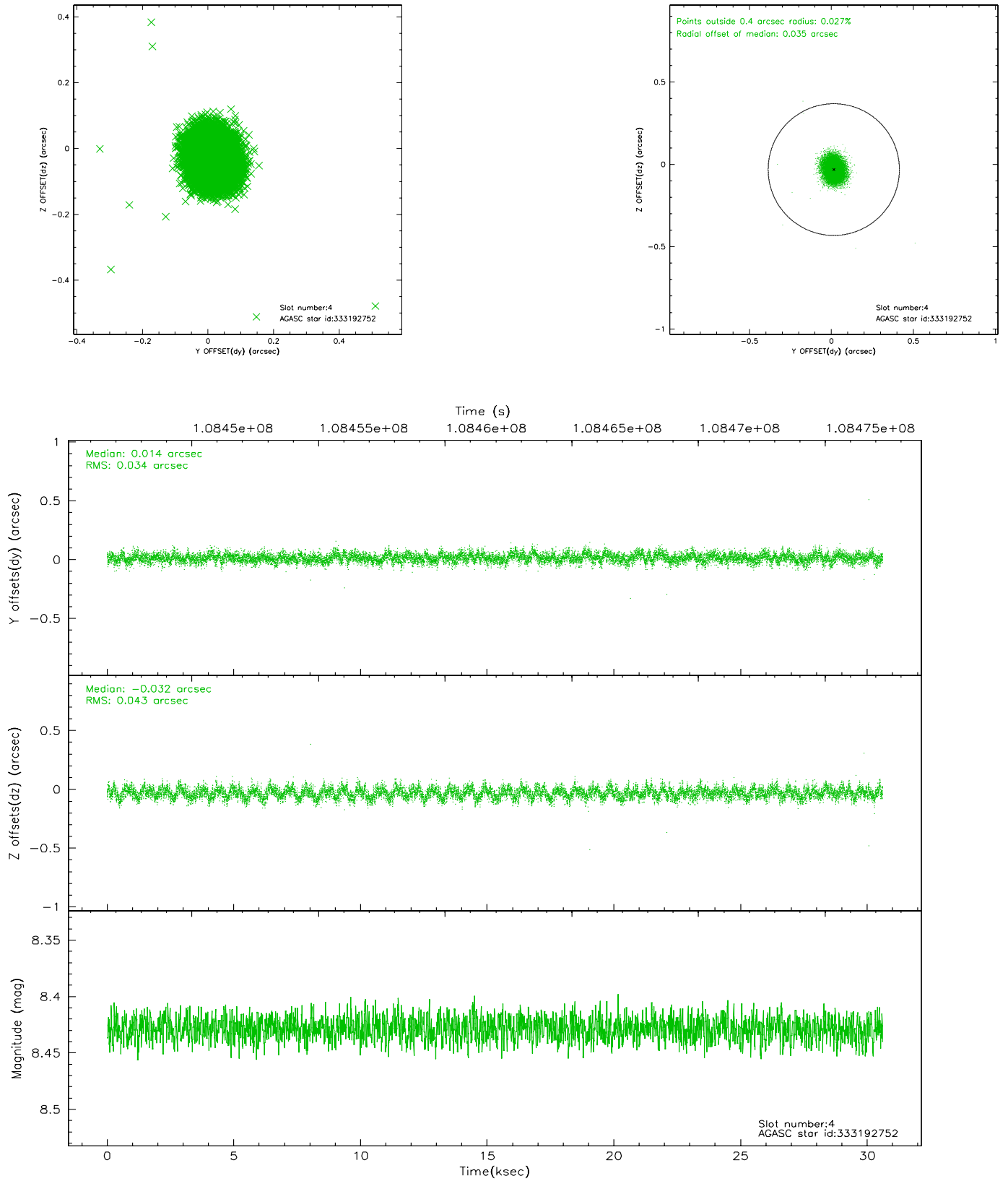
slot	status	id	mag	n_pts	med_dy	med_dz	dr1	dr2	ra	dec	mean_y	mean_z
0	FID	ACIS-I-2	7.15	7467	-0.019	-0.031	0.009	0.015	0.000000	0.000000	-756.86	-835.78
1	FID	ACIS-I-4	7.18	7467	-0.057	0.029	0.005	0.009	0.000000	0.000000	2157.13	1070.43
2	FID	ACIS-I-5	7.23	7467	-0.024	0.071	0.009	0.014	0.000000	0.000000	-1810.61	1068.39
3	GUIDE	396631480	8.00	14932	-0.126	-0.099	0.062	0.102	203.891262	37.702710	284.01	617.89
4	GUIDE	333192752	8.43	14929	0.014	-0.032	0.057	0.093	203.839277	37.405848	1217.09	1160.06
5	GUIDE	333190472	9.30	14918	0.180	0.198	0.081	0.132	203.664903	37.181947	2159.99	1262.95
6	GUIDE	396628240	9.34	14926	-0.159	-0.021	0.104	0.166	203.780849	38.306087	-1233.53	-967.23
7	GUIDE	396632024	9.50	14922	0.096	-0.040	0.105	0.171	204.531533	37.981693	-1631.85	1424.79

2.4 Star Slots

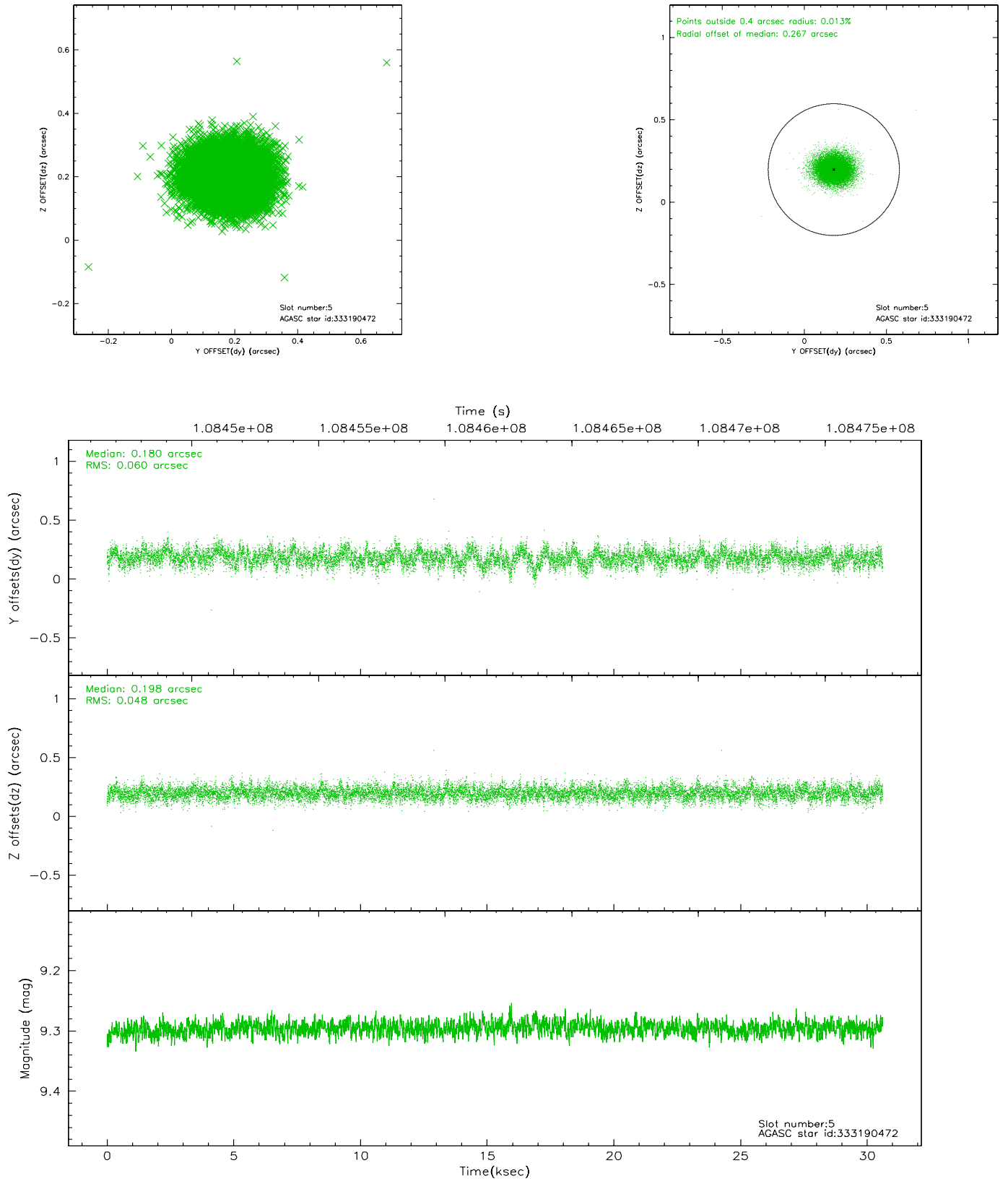
2.4.1 Slot 3



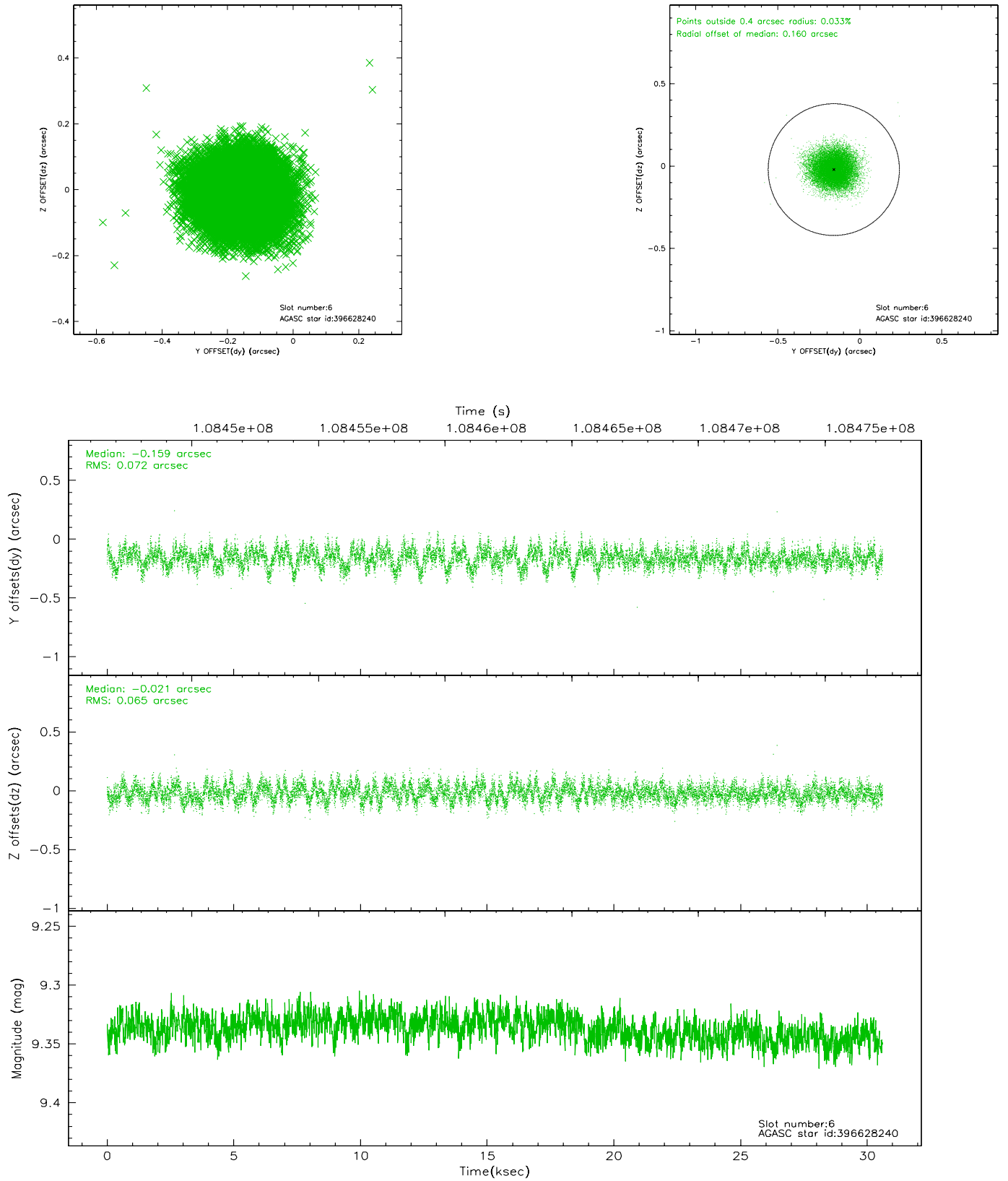
2.4.2 Slot 4



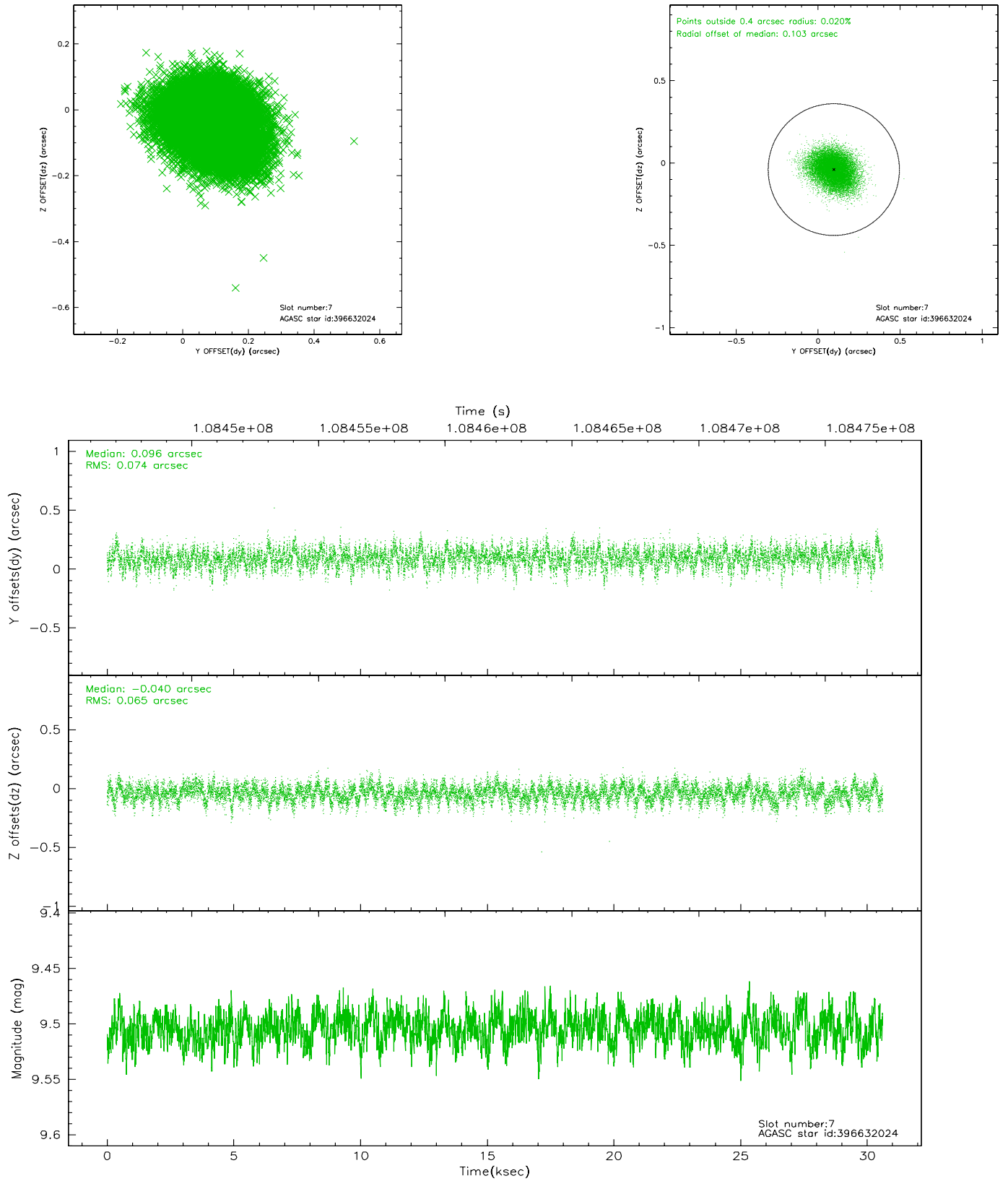
2.4.3 Slot 5



2.4.4 Slot 6

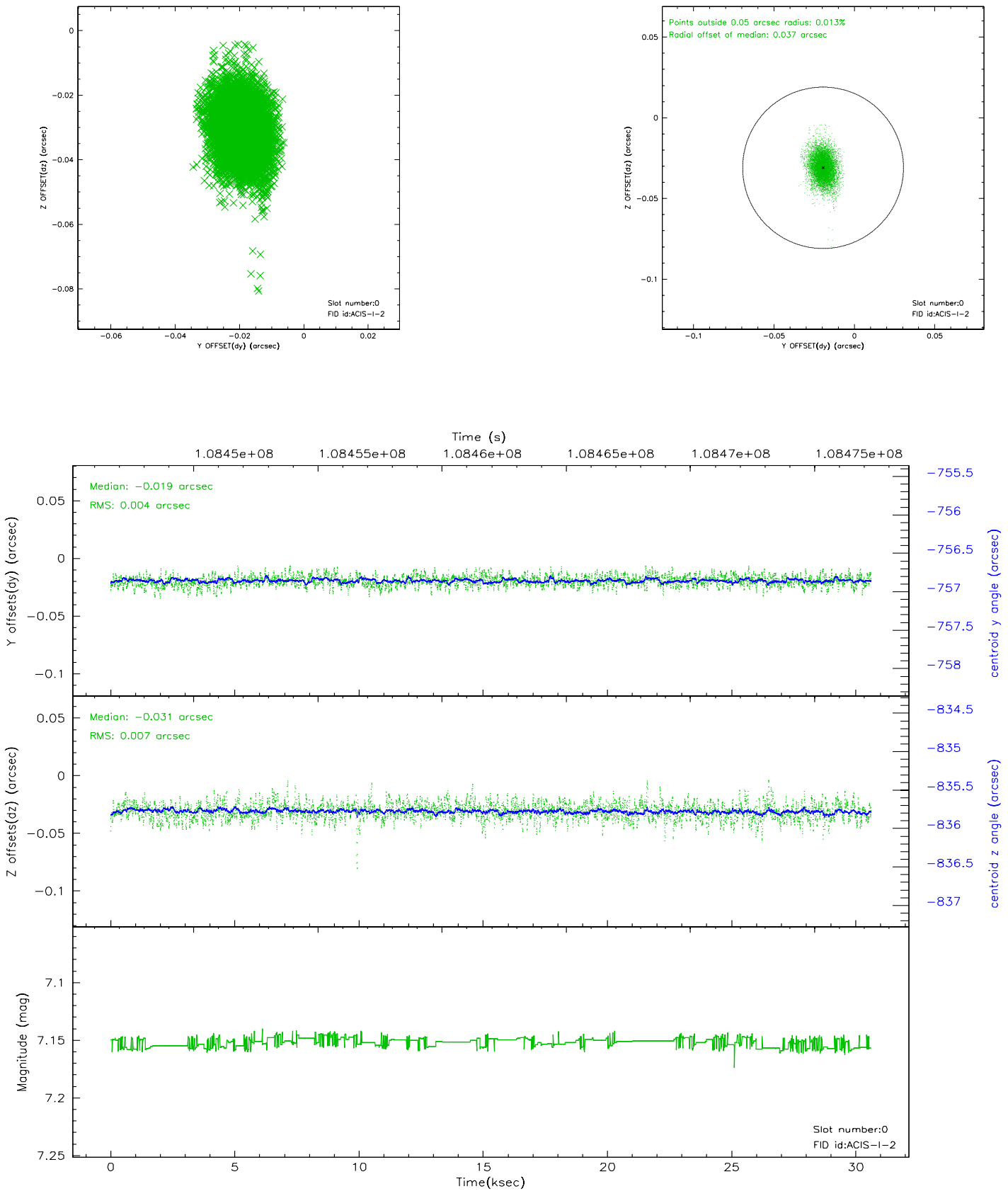


2.4.5 Slot 7

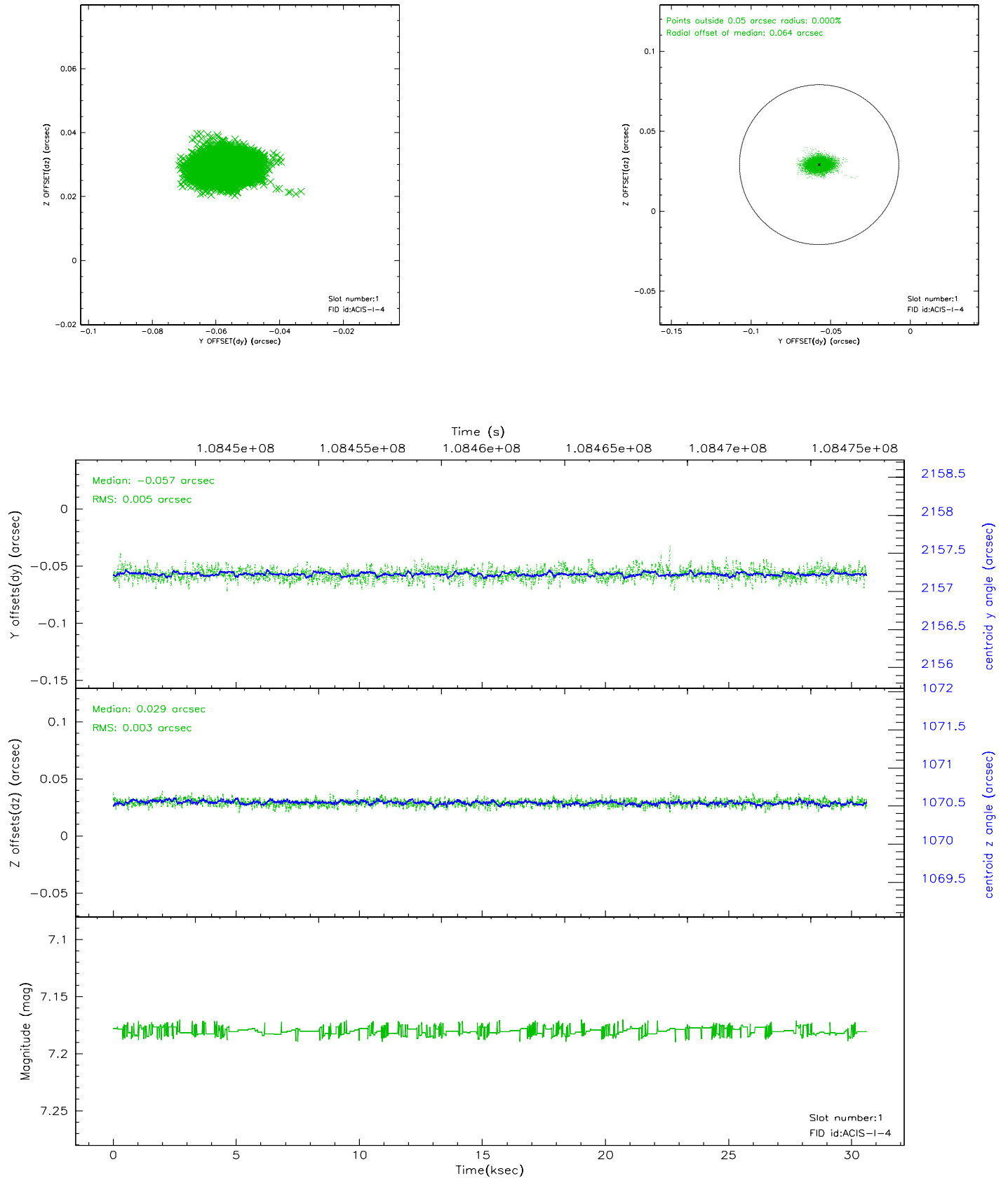


2.5 FID Slots

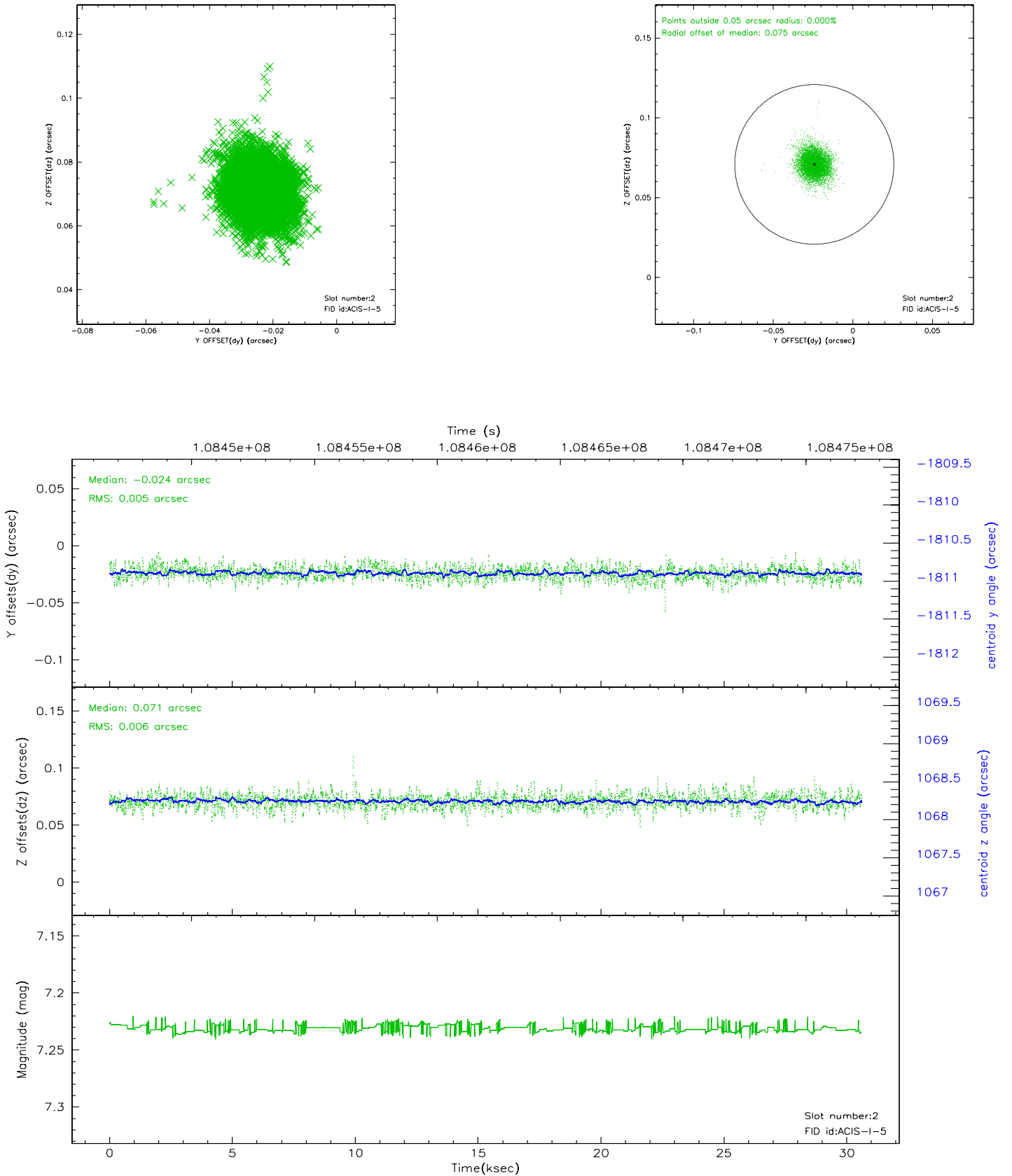
2.5.1 Slot 0



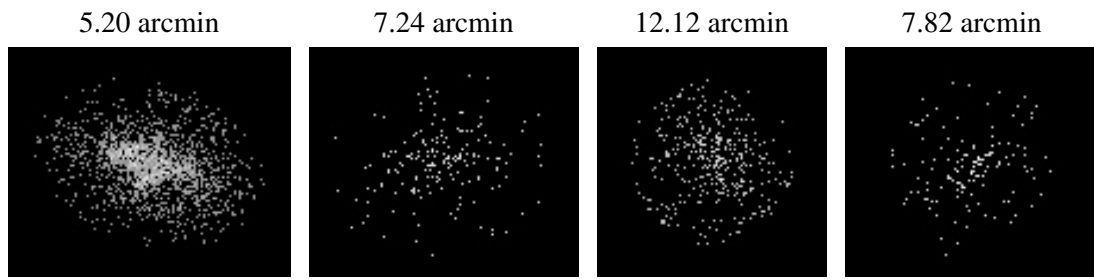
2.5.2 Slot 1



2.5.3 Slot 2



3 Point Sources



A Summary

A.1 Status

V&V Scientist	Jen Lauer
V&V Date (YYYY-MM-DD)	2006.11.28
V&V Edition	1
V&V Disposition and Status	OK
V&V Charge Time	30.179

A.2 Comments