

V&V Reference Report

L2 ASCDS Version : 8.4.5

Observation 2236 - L2 Version 3
Chandra X-Ray Center

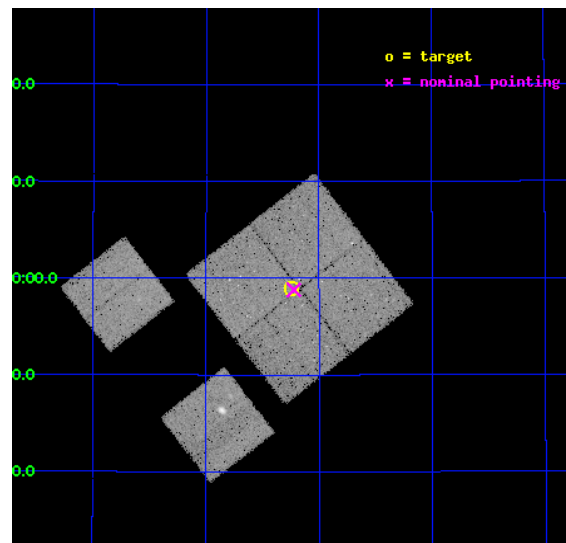
L2 Processing Date : Sep 17 2012

Contents

1	Front	2
2	OBI	3
2.1	OBI	3
2.1.1	Images	3
2.1.2	Bias	3
2.1.3	Parameters	4
2.1.4	Events	4
2.2	Compared Parameters	5
2.3	Aspect	6
2.4	Star Slots	9
2.4.1	Slot 3	9
2.4.2	Slot 4	10
2.4.3	Slot 5	11
2.4.4	Slot 6	12
2.4.5	Slot 7	13
2.5	FID Slots	14
2.5.1	Slot 0	14
2.5.2	Slot 1	15
2.5.3	Slot 2	16
A	Summary	17
A.1	Status	17
A.2	Comments	17

1 Front

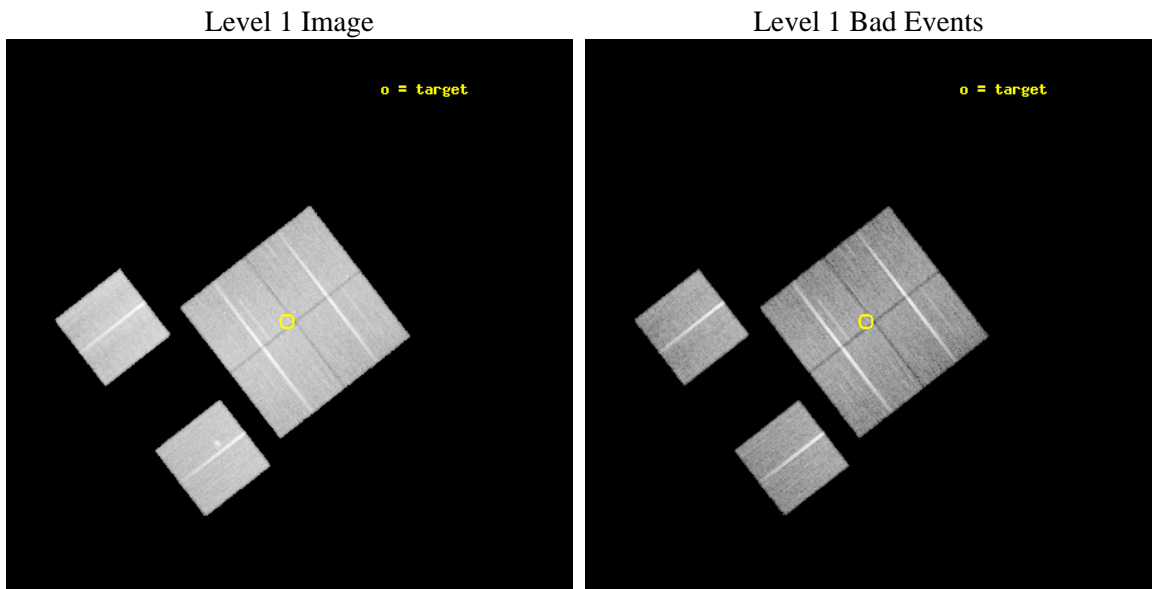
seq_num	900063	Sequence number
obs_id	2236	Observation id
title	A COMBINED CHANDRA/XMM ATTACK ON THE ASTROPHYSICS OF THE HARD X-RAY BACKGROUND.	Proposal title
observer	Prof. Ian McHardy	Principal investigator
object	XMM 13HR - FIELD 1	Source name
dtcycle	0	
cycle	P	events from which exps? Prim/Second/Both
ra_targ	203.560853	Observer's specified target RA [deg]
dec_targ	37.982151	Observer's specified target Dec [deg]
ra_nom	203.55560804933	Nominal RA [deg]
dec_nom	37.979858343238	Nominal Dec [deg]
roll_nom	232.20191511543	Nominal Roll [deg]
revision	3	Processing version of data
ontime	30179.200028092	Sum of GTIs [s]
livetime	29797.052825603	Livetime [s]
ontime0	30175.839001805	Sum of GTIs [s]
ontime1	30179.121031985	Sum of GTIs [s]
ontime2	30179.162071973	Sum of GTIs [s]
ontime3	30179.200028092	Sum of GTIs [s]
ontime6	30175.797991738	Sum of GTIs [s]
ontime8	30179.200028092	Sum of GTIs [s]
l2events	120292	Number of level 2 events



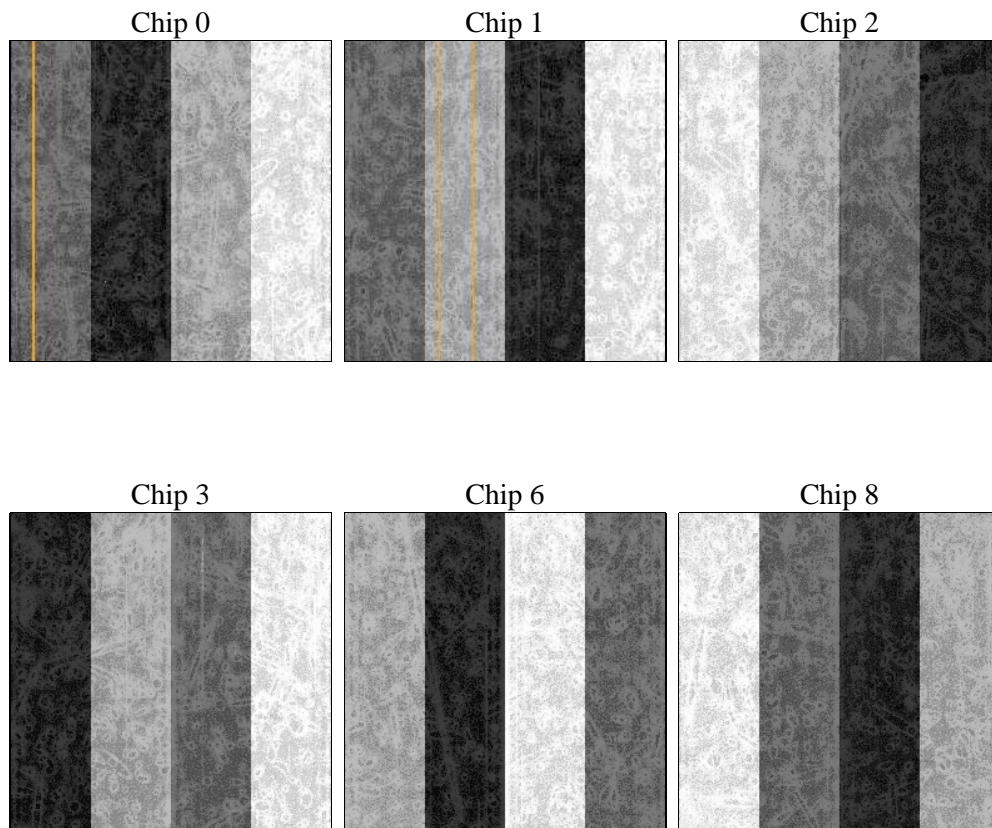
2 OBI

2.1 OBI

2.1.1 Images



2.1.2 Bias



2.1.3 Parameters

obi_num	1	Obi number	sched_exp_time	30425.000000	[s] Scheduled observation exposure time
ascdsver	8.4.5	Processing system revision	ontime	30179.200028092	Sum of GTIs [s]
caldsver	4.5.1.1	 	ontime0	30175.839001805	Sum of GTIs [s]
date	2012-09-17T19:51:36	Date and time of file creation	ontime1	30179.121031985	Sum of GTIs [s]
revision	3	Processing version of data	ontime2	30179.162071973	Sum of GTIs [s]
			ontime3	30179.200028092	Sum of GTIs [s]
			ontime6	30175.797991738	Sum of GTIs [s]
			ontime8	30179.200028092	Sum of GTIs [s]
			l1events	1196001	Number of level 1 events

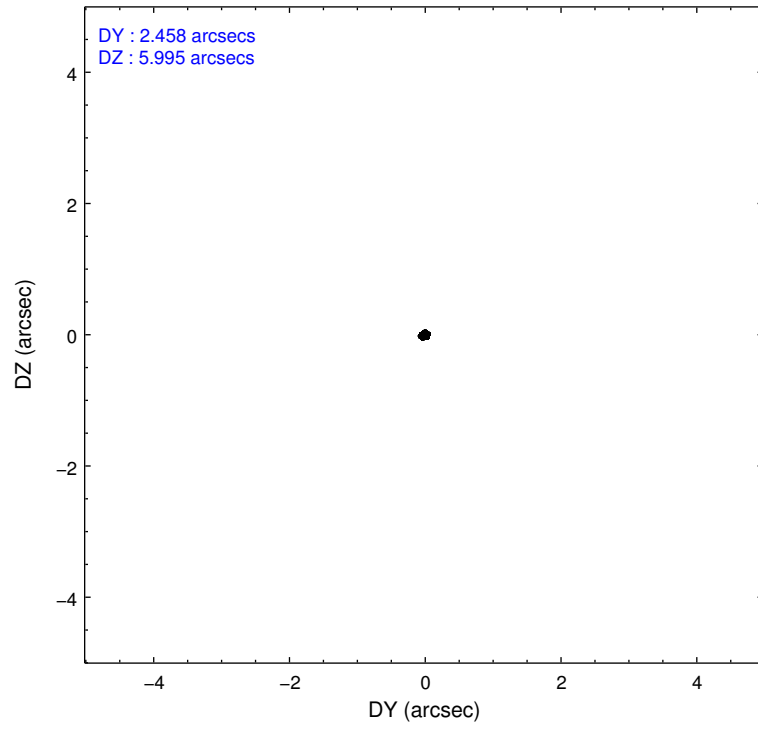
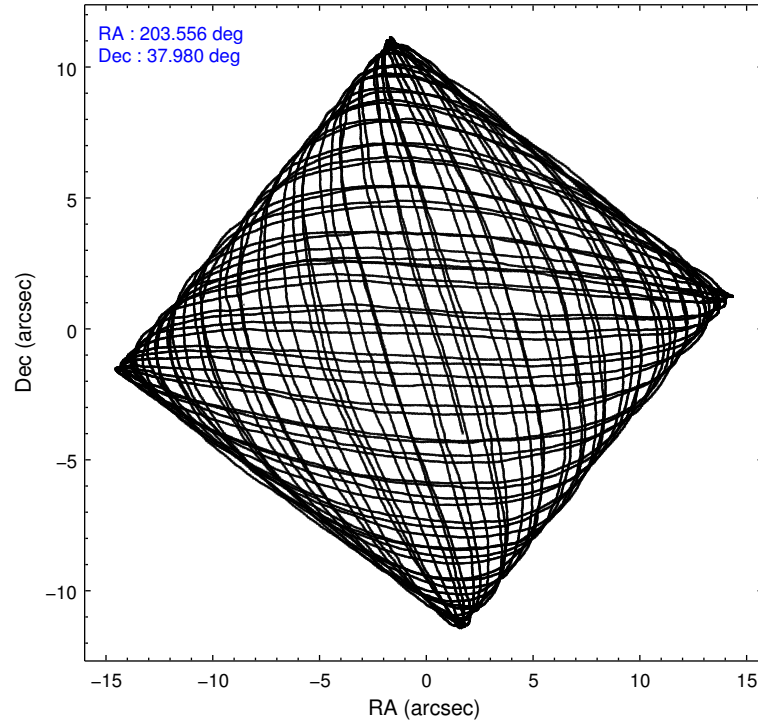
2.1.4 Events

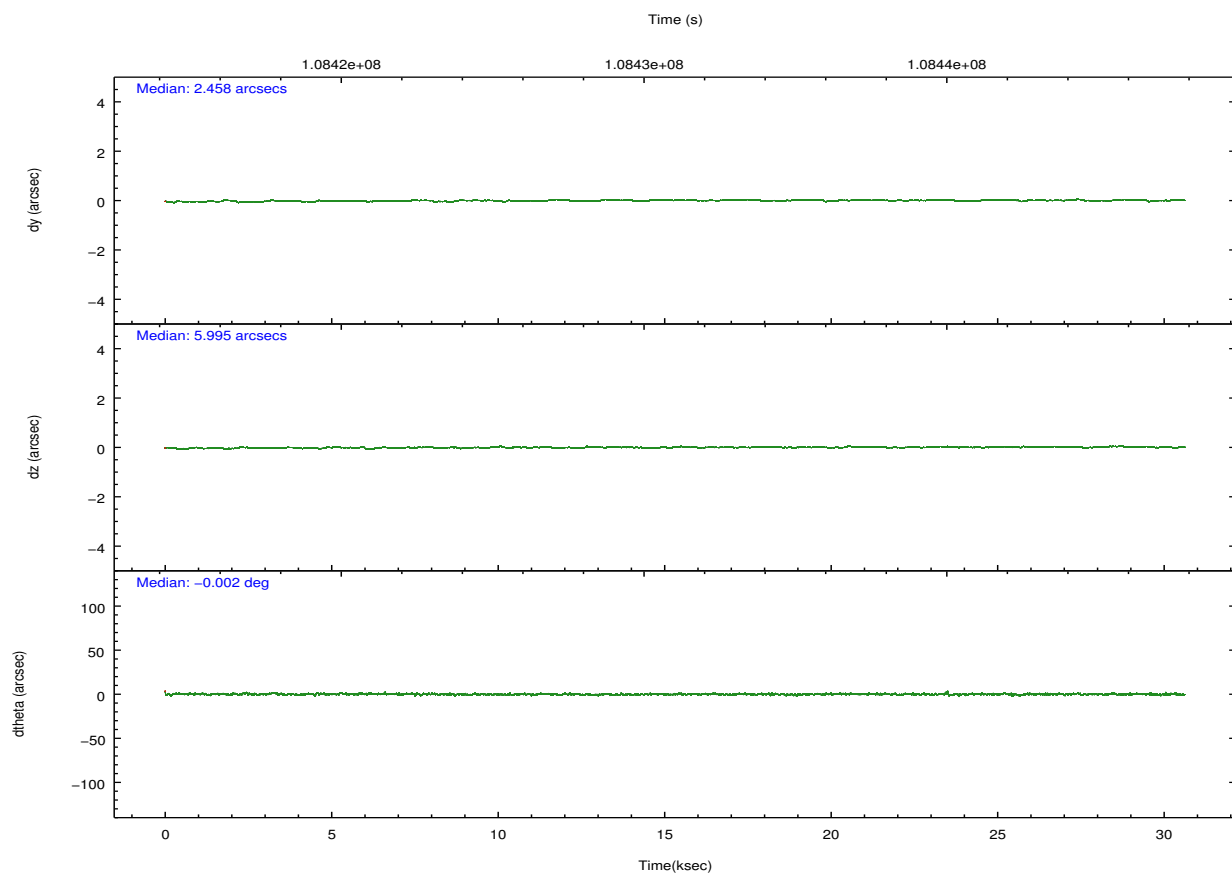
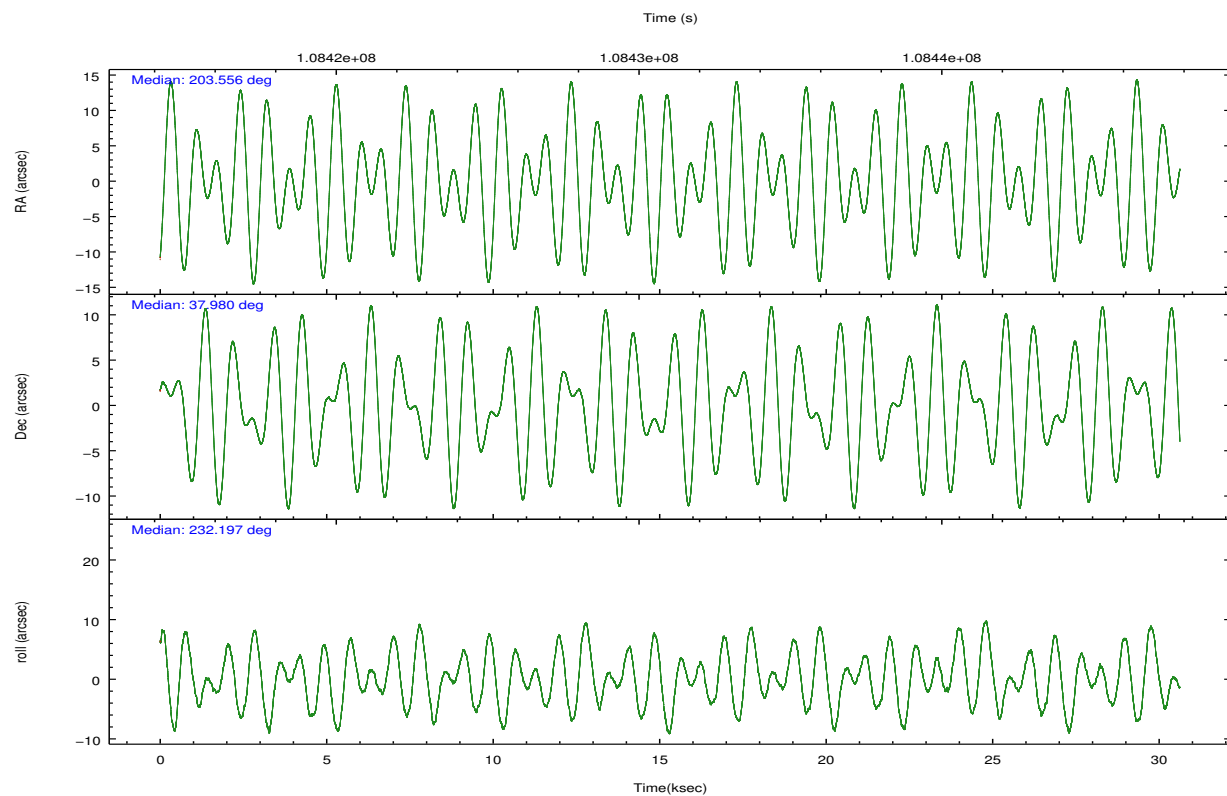
	ccd 0	ccd 1	ccd 2	ccd 3	ccd 6	ccd 8		ccd 0	ccd 1	ccd 2	ccd 3	ccd 6	ccd 8
level 1 events	175439	177276	193618	200560	198845	250263	grade 0 events	9824	9714	8879	9838	10568	15738
rejected events	152497	153586	172120	177951	174708	200481		5%	5%	4%	4%	5%	6%
rejected %	86%	86%	88%	88%	87%	80%	grade 1 events	95	80	118	101	101	190
								0%	0%	0%	0%	0%	0%
							grade 2 events	4831	4852	4645	4542	4722	10693
								2%	2%	2%	2%	2%	4%
							grade 3 events	2303	2425	2077	2212	2321	5320
								1%	1%	1%	1%	1%	2%
							grade 4 events	2025	2284	2077	2116	2247	5038
								1%	1%	1%	1%	1%	2%
							grade 5 events	6764	7296	6677	7679	8024	10494
								3%	4%	3%	3%	4%	4%
							grade 6 events	3963	4416	3822	3902	4281	12996
								2%	2%	1%	1%	2%	5%
							grade 7 events	145634	146209	165323	170170	166581	189794
								83%	82%	85%	84%	83%	75%

2.2 Compared Parameters

Parameter	Planned	Actual	Parameter	Planned	Actual
Instrument	ACIS	ACIS	Obspar format version number	7	7
Detector	ACIS-012368	ACIS-012368	Obspar file type	PREDICTED	ACTUAL
Grating	NONE	NONE	Obspar update status	NONE	UPDATED
Data mode	VFAINT	VFAINT	Number of optional ACIS chips dropped	0	0
Observation mode	POINTING	POINTING	On-chip summing requested	N	N
[deg] Pointing RA	203.560299	203.5556080493303	Subarray requested	NONE	NONE
[deg] Pointing Dec	38.007032	37.97985834323784	Alternating exposures requested	N	N
[deg] Pointing Roll	231.990339	232.2019151154294	[s] Primary exposure time	0.000000	3.2
[mm] SIM focus pos	-0.782348	-0.7809083437167272			
[mm] SIM defocus	0	0.001439871863259334			
[mm] SIM translation stage pos	-233.592463	-233.5874344608287			
[mm] SIM translation stage offset	0	-0.005018542100998502			
[s] Observation start time (MET)	108415910.184000	108415534.03189			
Observation start date	2001-06-08T19:30:46	2001-06-08T19:25:34			
[s] Observation end time (MET)	108446335.184000	108446469.5581			
Observation end date	2001-06-09T03:57:51	2001-06-09T04:01:09			
Read mode	TIMED	TIMED			

2.3 Aspect



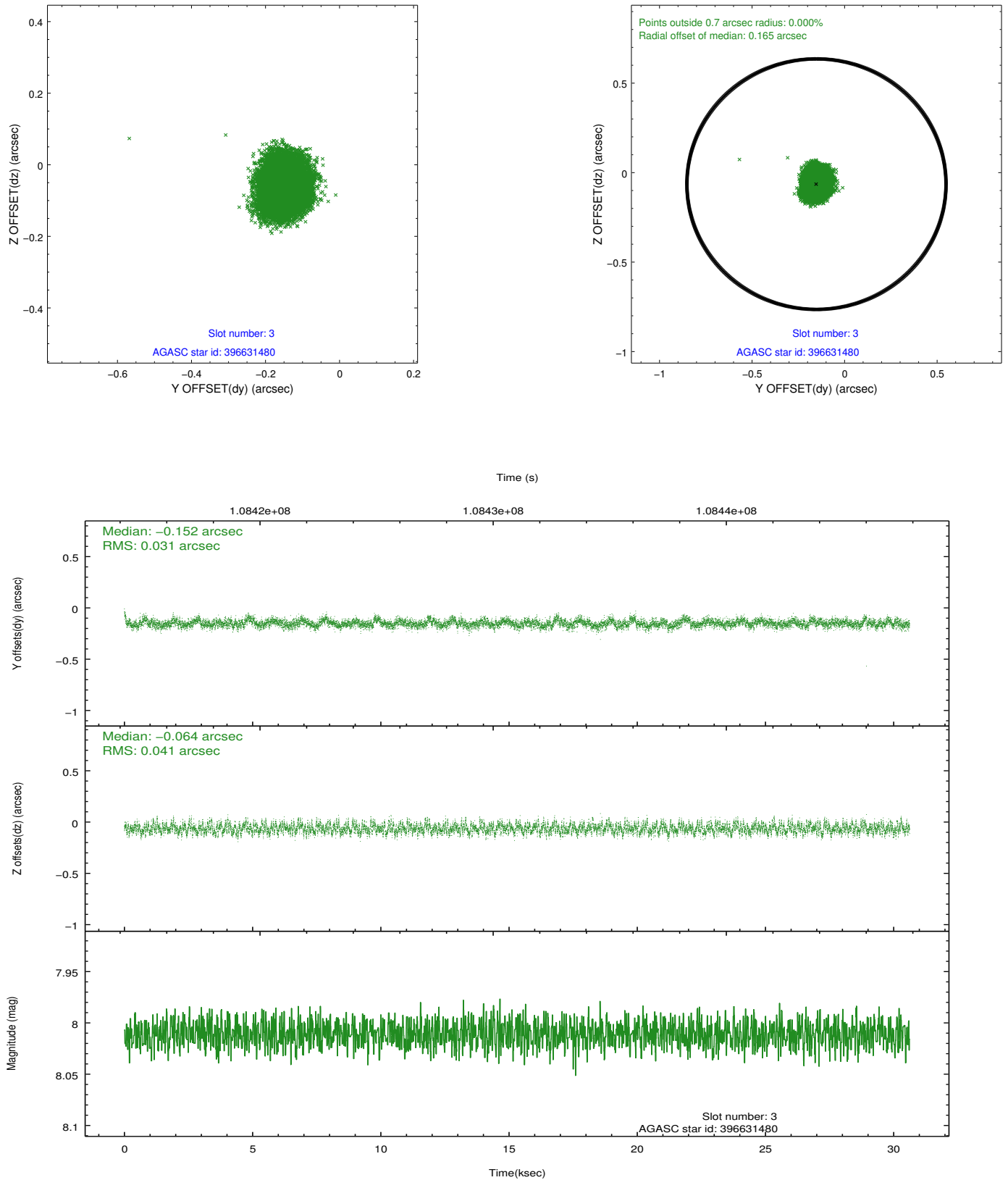


Slot Statistics

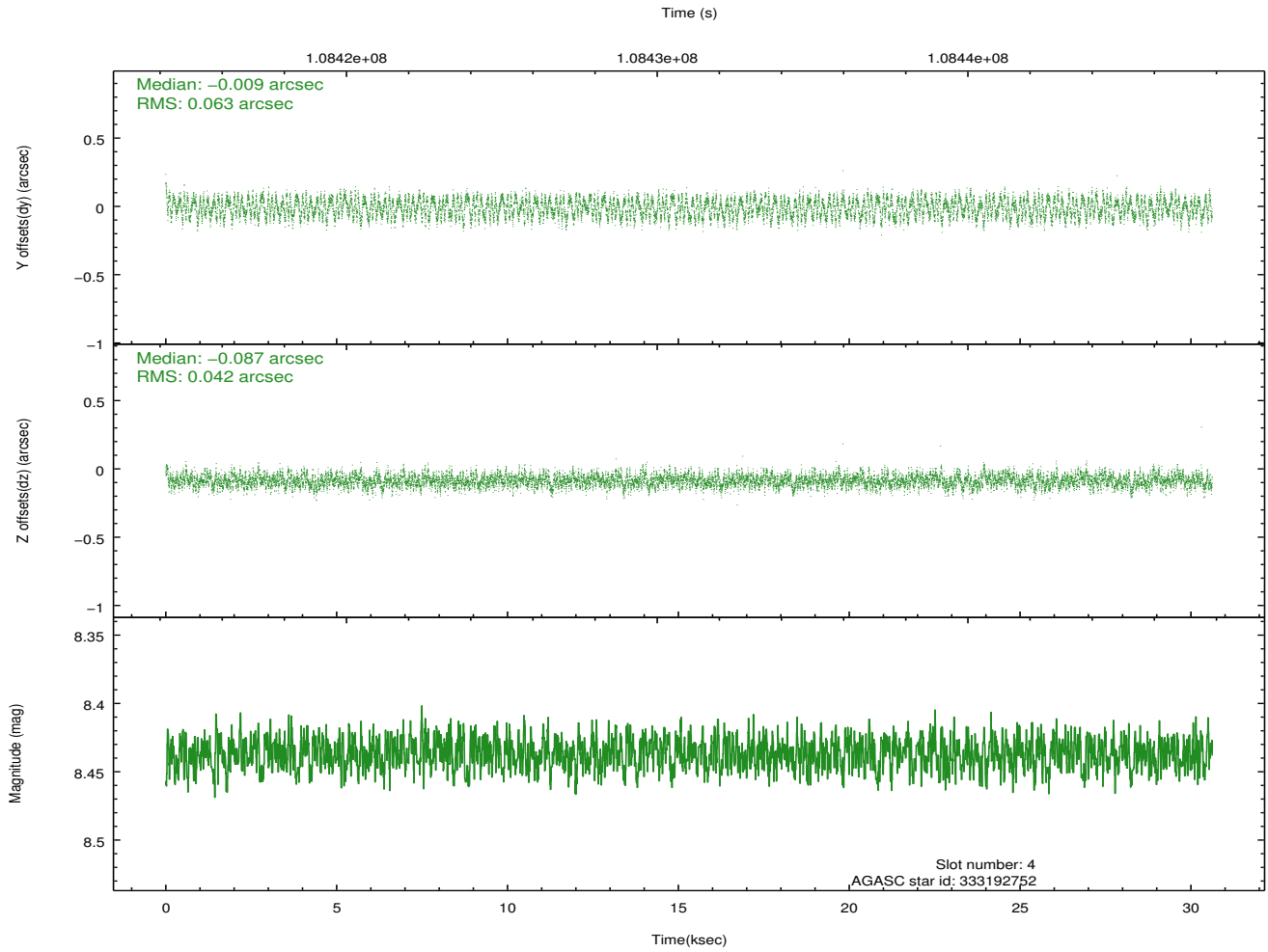
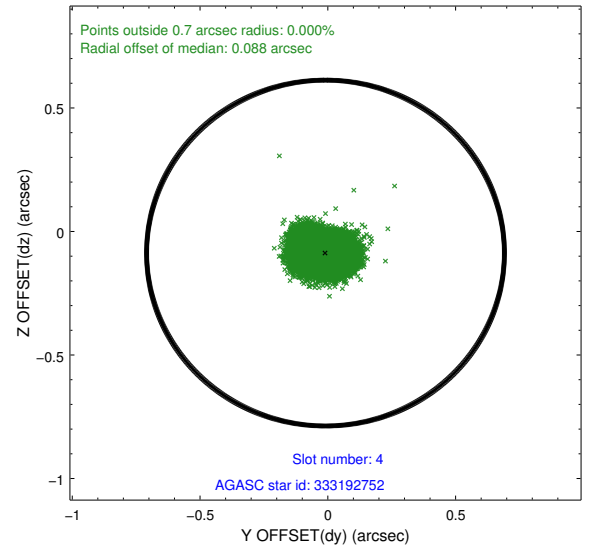
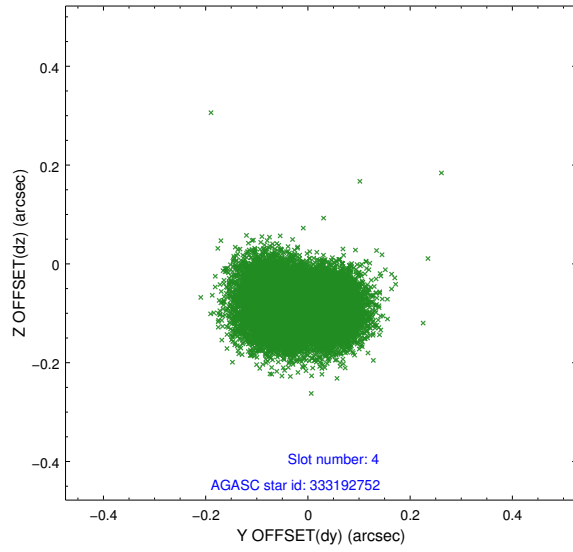
slot	status	id	mag	n_pts	med_dy	med_dz	dr1	dr2	ra	dec	mean_y	mean_z
0	FID	ACIS-I-2	7.15	7470	-0.031	-0.054	0.009	0.015	0.000000	0.000000	-756.85	-835.78
1	FID	ACIS-I-4	7.18	7467	-0.017	0.041	0.006	0.011	0.000000	0.000000	2157.19	1070.46
2	FID	ACIS-I-5	7.23	7468	-0.053	0.082	0.009	0.015	0.000000	0.000000	-1810.61	1068.42
3	GUIDE	396631480	8.01	14934	-0.152	-0.064	0.054	0.088	203.891262	37.702710	281.16	1416.51
4	GUIDE	333192752	8.44	14937	-0.009	-0.087	0.082	0.124	203.839277	37.405848	1212.94	1960.93
5	GUIDE	333190472	9.30	14912	0.257	0.188	0.076	0.124	203.664903	37.181947	2155.71	2066.16
6	GUIDE	396628240	9.35	14932	-0.126	0.095	0.082	0.133	203.780849	38.306087	-1232.43	-172.20
7	GUIDE	396632024	9.53	14865	0.028	-0.133	0.103	0.163	204.531533	37.981693	-1636.80	2218.63

2.4 Star Slots

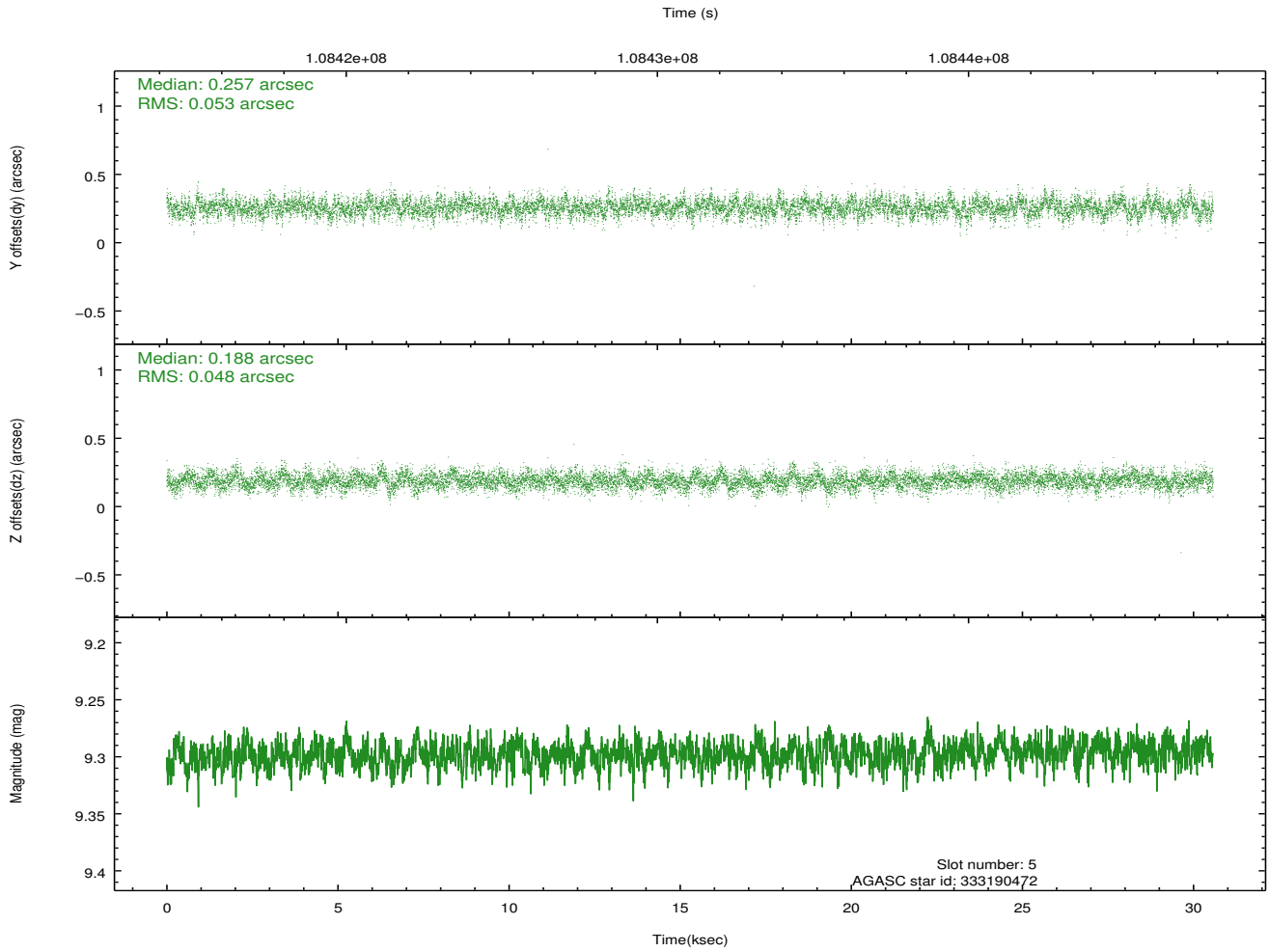
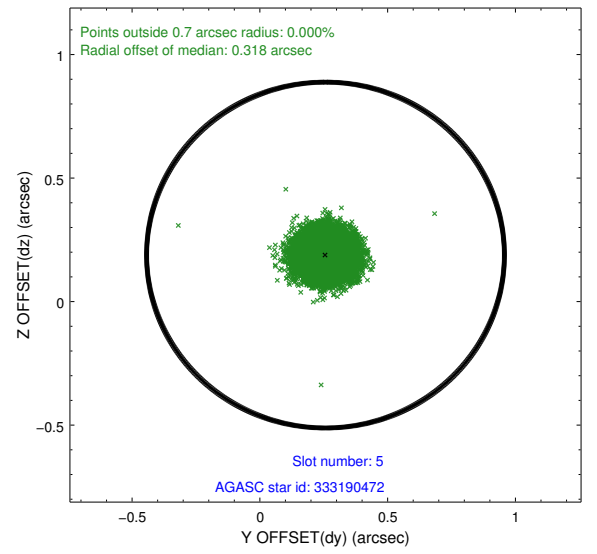
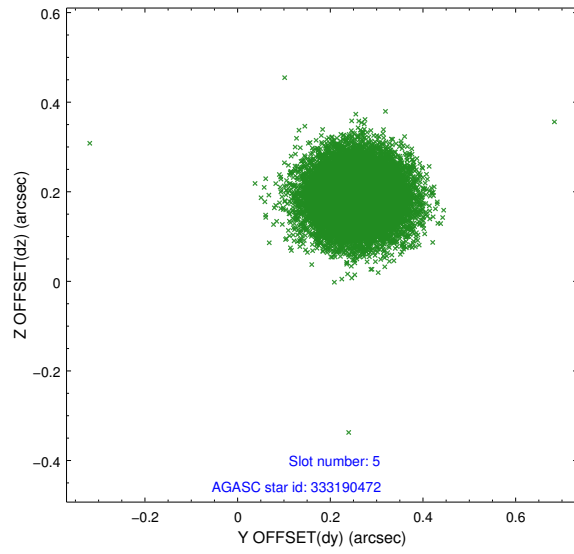
2.4.1 Slot 3



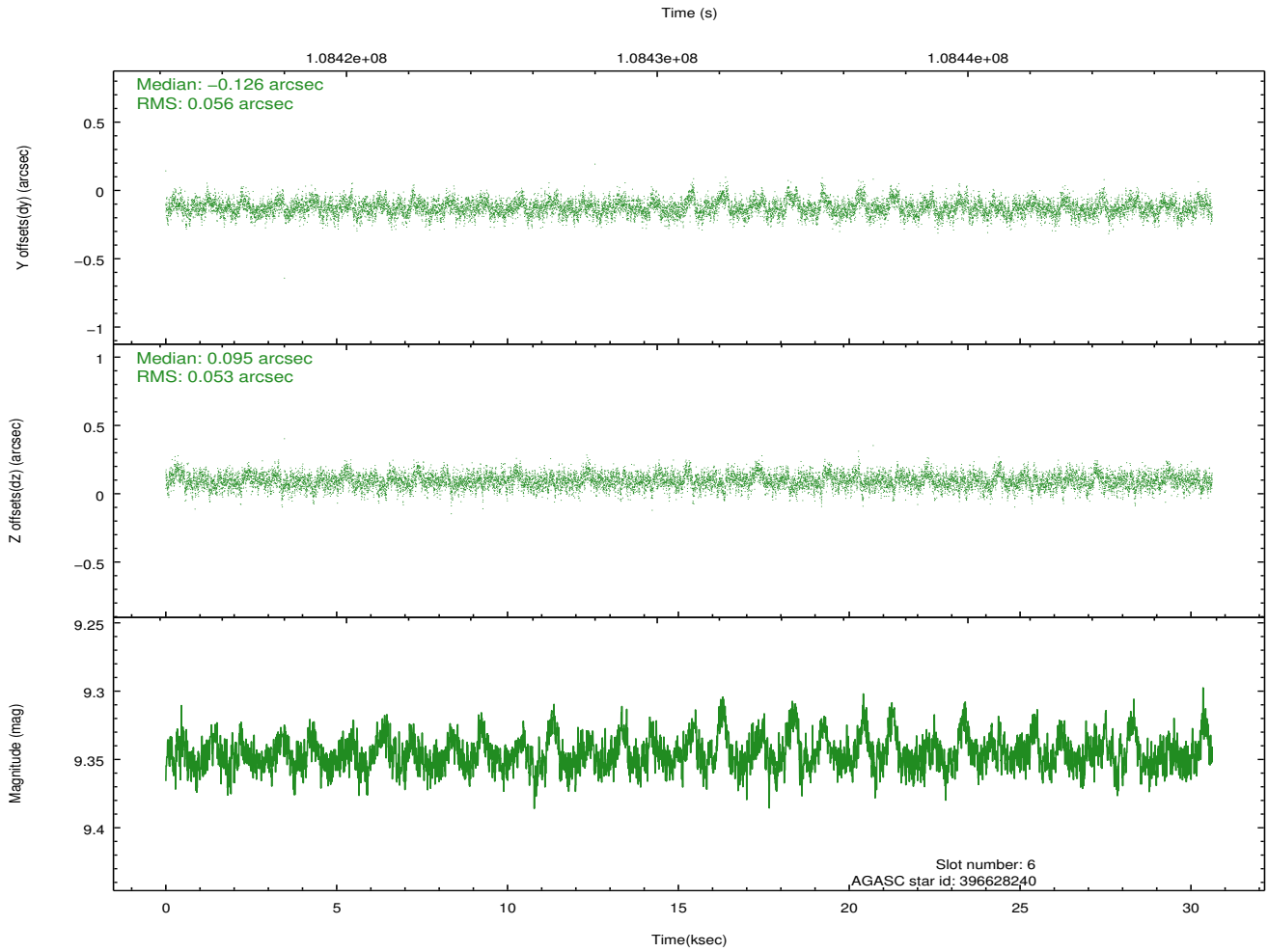
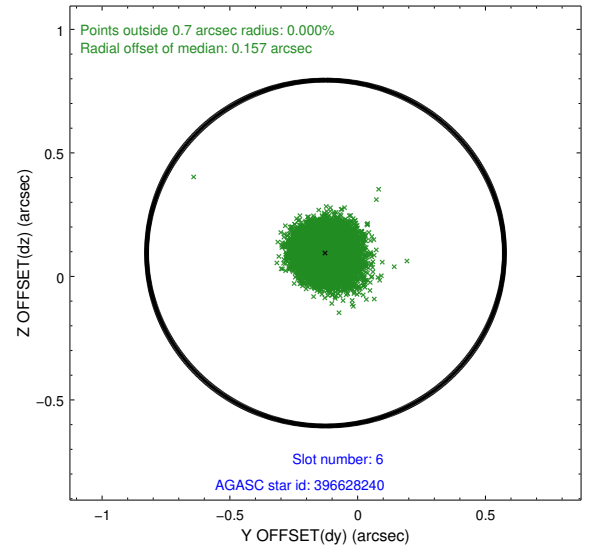
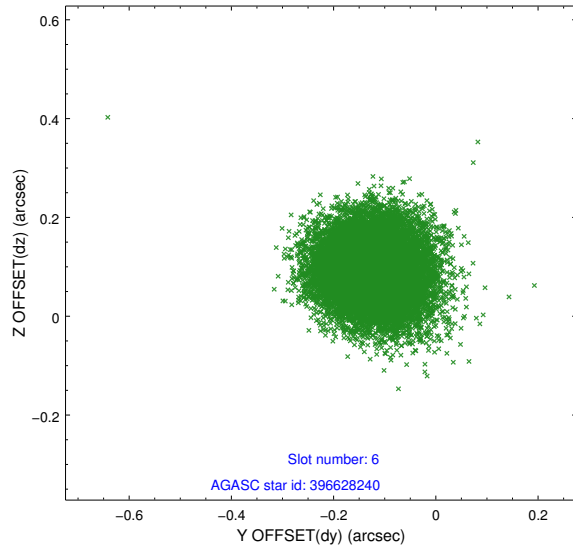
2.4.2 Slot 4



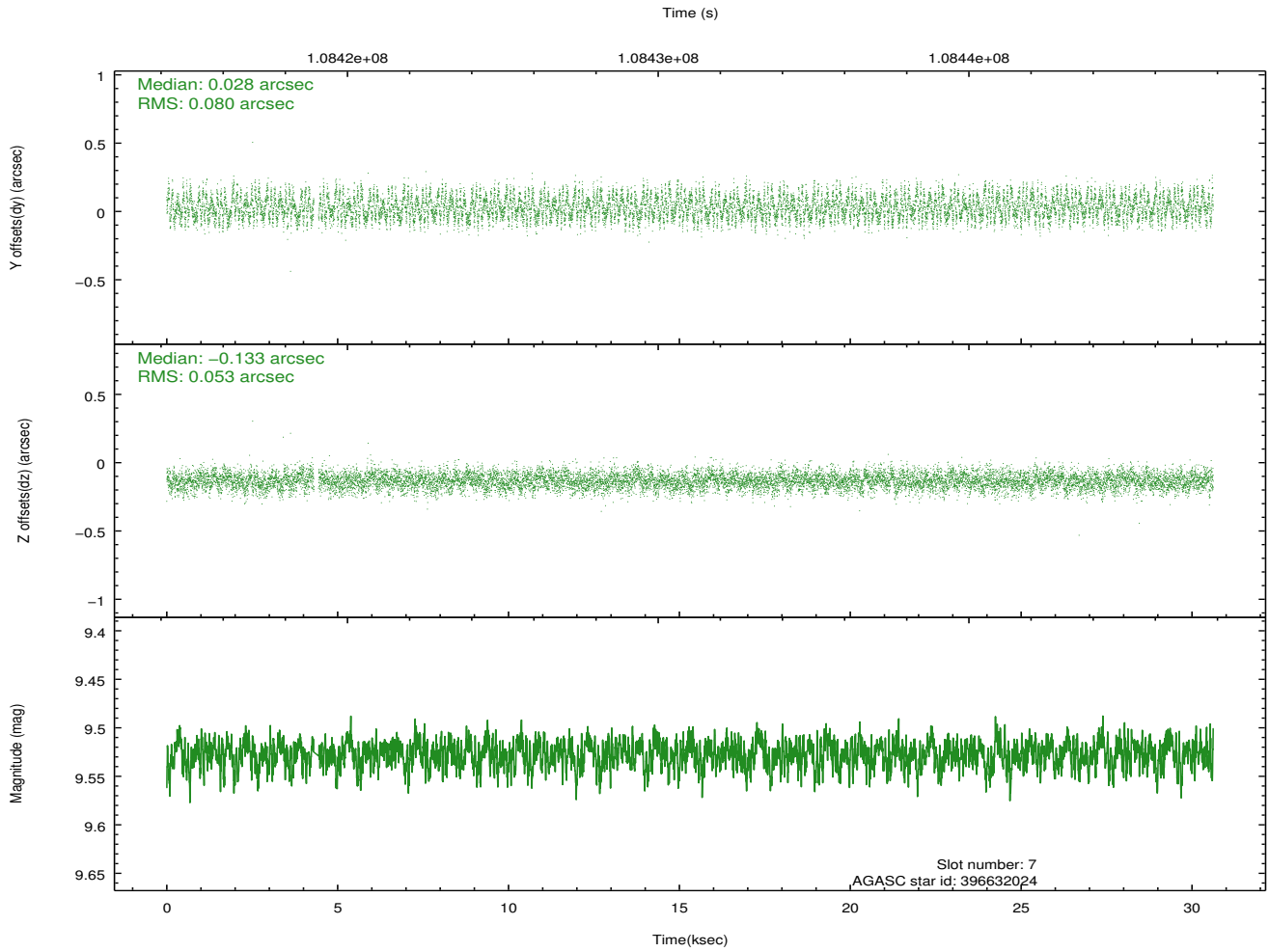
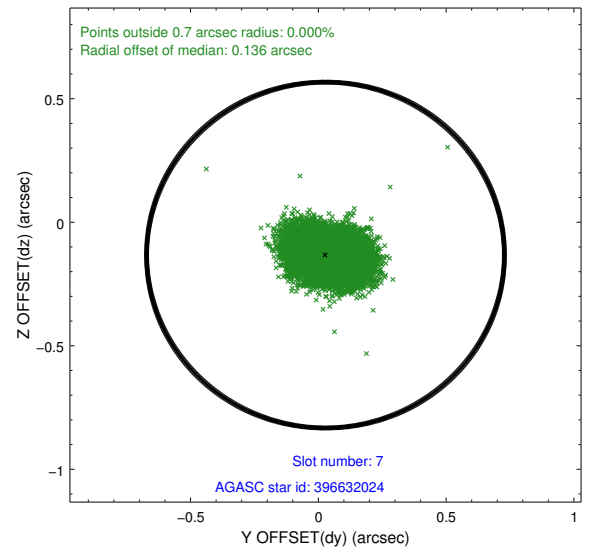
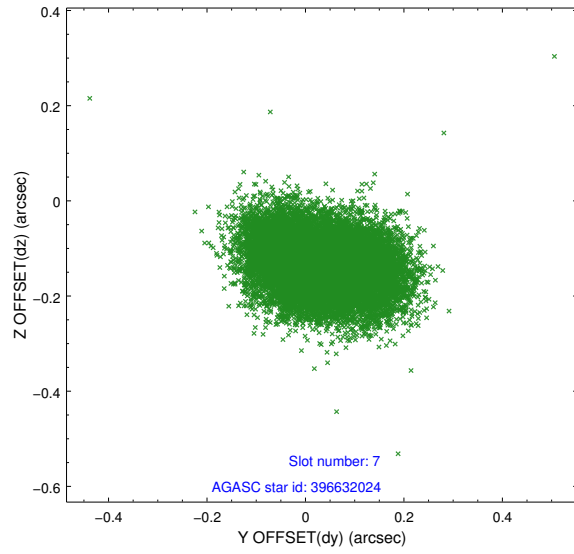
2.4.3 Slot 5



2.4.4 Slot 6

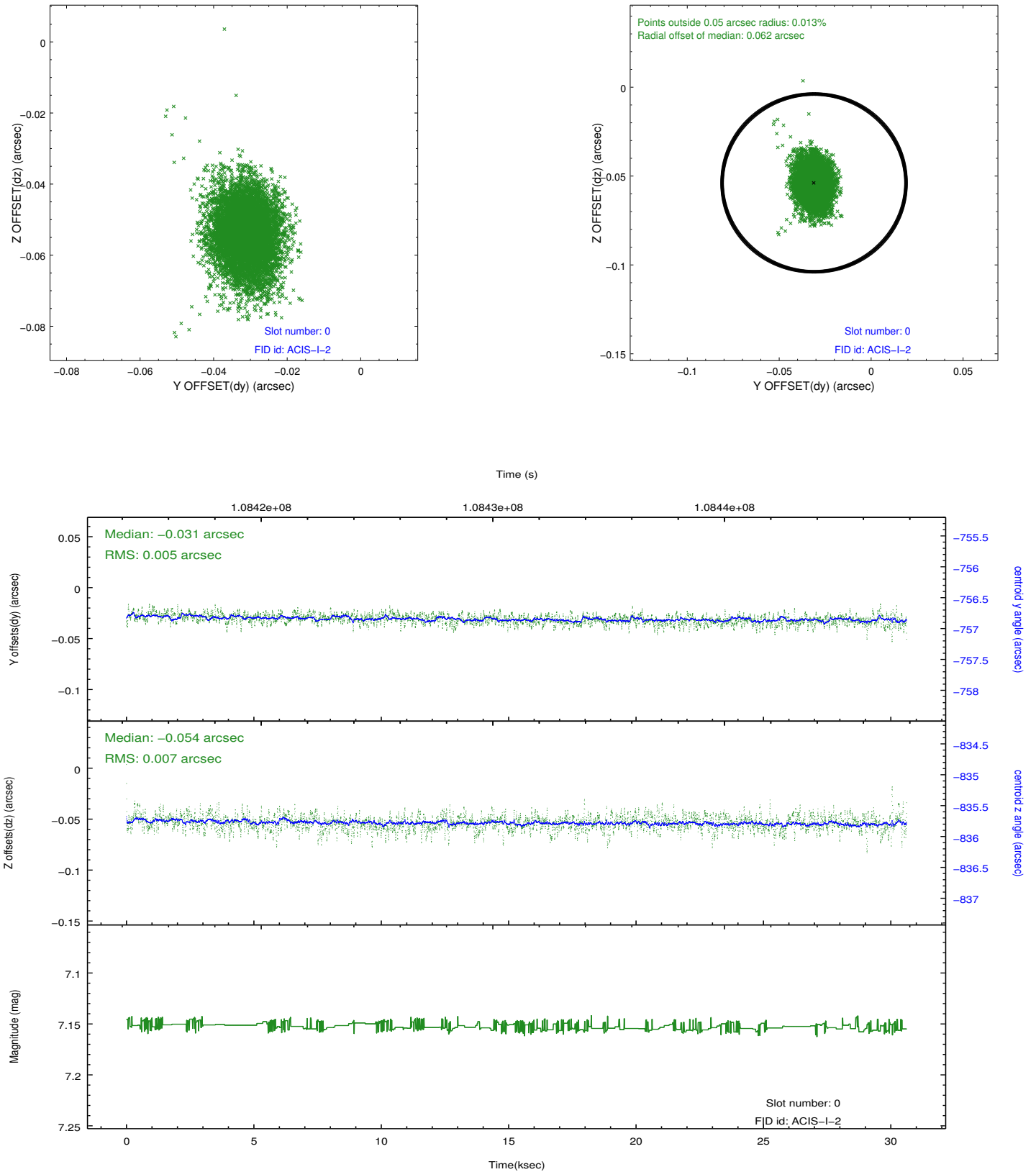


2.4.5 Slot 7

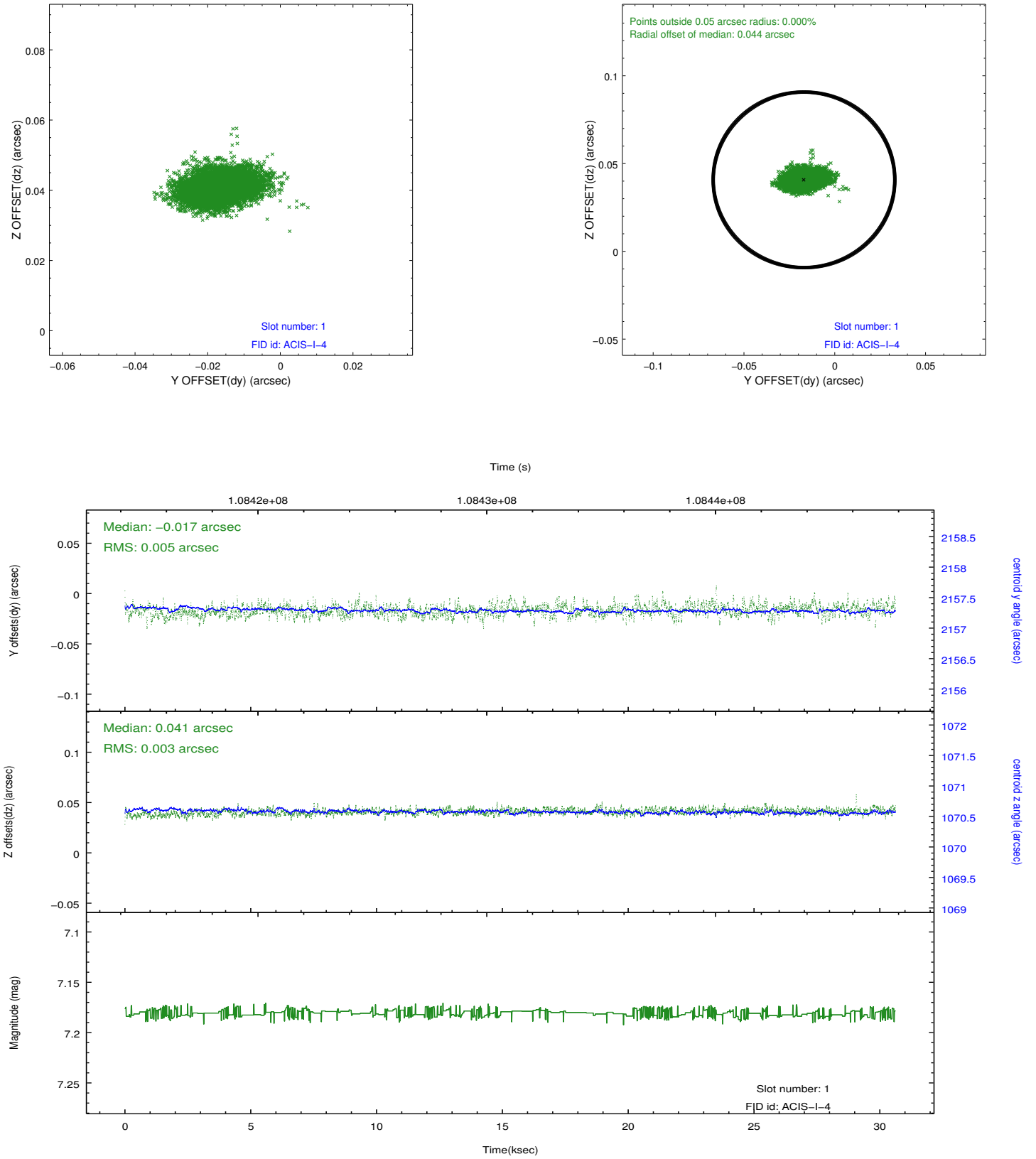


2.5 FID Slots

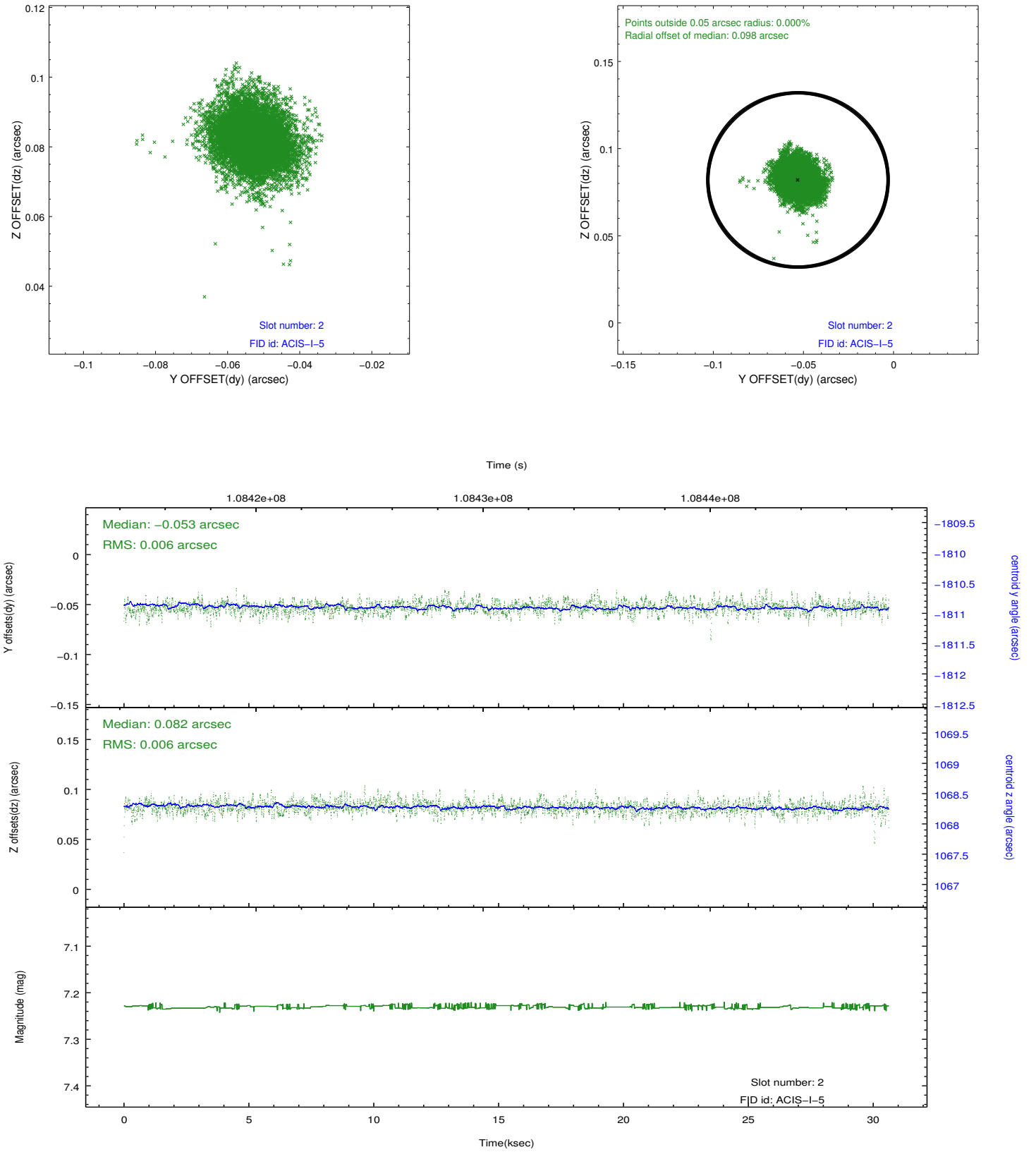
2.5.1 Slot 0



2.5.2 Slot 1



2.5.3 Slot 2



A Summary

A.1 Status

V&V Scientist	Jen Lauer
V&V Date (YYYY-MM-DD)	2012.09.20
V&V Edition	1
V&V Disposition and Status	OK
V&V Charge Time	30.2

A.2 Comments