

V&V Reference Report

L2 ASCDS Version : 7.6.9

Observation 2233 - L2 Version 001
Chandra X-Ray Center

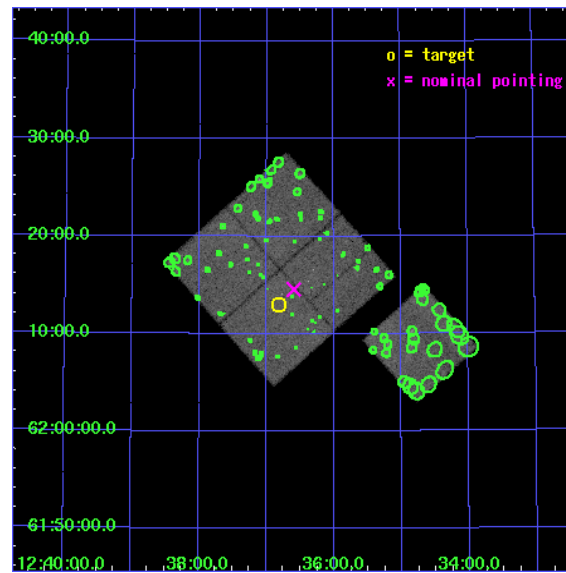
L2 Processing Date : Nov 8 2006

Contents

1	Front	2
2	OBI	3
2.1	OBI	3
2.1.1	Images	3
2.1.2	Bias	3
2.1.3	Parameters	4
2.1.4	Events	4
2.2	Compared Parameters	5
2.3	Aspect	6
2.4	Star Slots	9
2.4.1	Slot 3	9
2.4.2	Slot 4	10
2.4.3	Slot 5	11
2.4.4	Slot 6	12
2.4.5	Slot 7	13
2.5	FID Slots	14
2.5.1	Slot 0	14
2.5.2	Slot 1	15
2.5.3	Slot 2	16
3	Point Sources	17
A	Summary	18
A.1	Status	18
A.2	Comments	18

1 Front

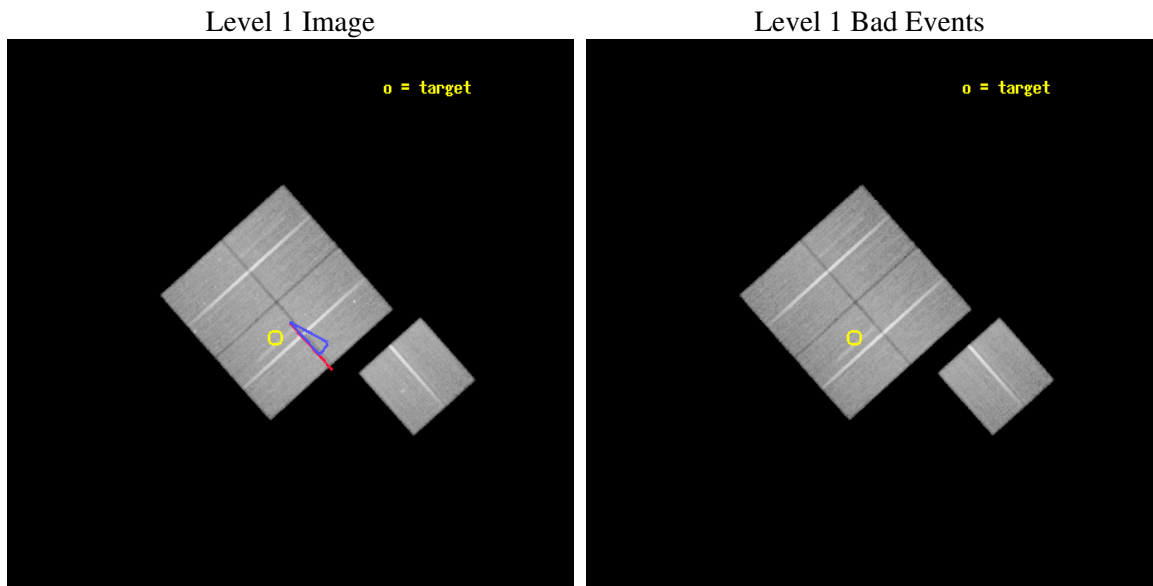
seq_num	900060
obs_id	2233
title	THE CHANDRA DEEP SURVEY OF THE HUBBLE DEEP FIELD NORTH (HDF-N) AREA
observer	Prof. William Brandt
object	HDF-N
dtcycle	0
cycle	P
ra_targ	189.205833
dec_targ	62.216111
ra_nom	189.14827311748
dec_nom	62.24273811528
roll_nom	138.2596172939
revision	2
ontime	63915.717956617
livetime	63080.612047447
ontime0	63918.858916864
ontime1	63915.717956617
ontime2	63918.858916849
ontime3	63915.717956617
ontime6	63915.717956617
l2events	200576



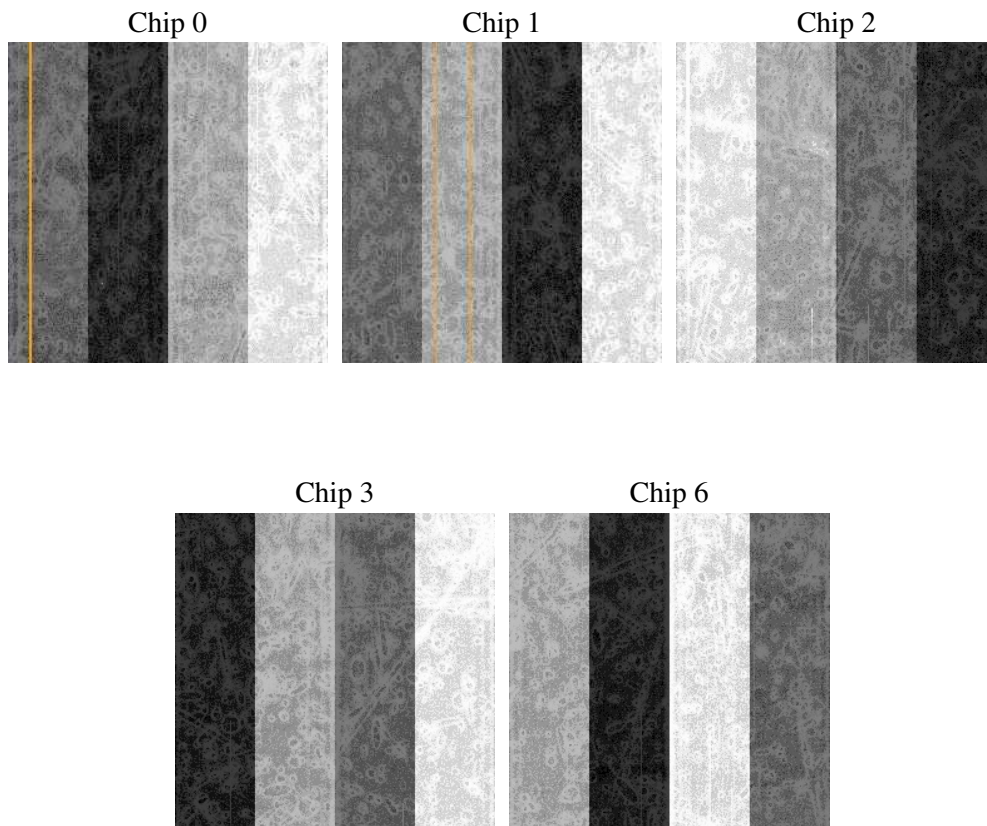
2 OBI

2.1 OBI

2.1.1 Images



2.1.2 Bias



2.1.3 Parameters

obi_num	0
ascdsver	7.6.9
caldbver	3.2.3
date	2006-11-08T23:30:08
revision	2

sched_exp_time	166393.894000
ontime	65009.28031522
ontime0	65021.843797147
ontime1	65043.831127077
ontime2	65012.421135768
ontime3	65009.28031522
ontime6	65097.227999255
l1events	2238639

2.1.4 Events

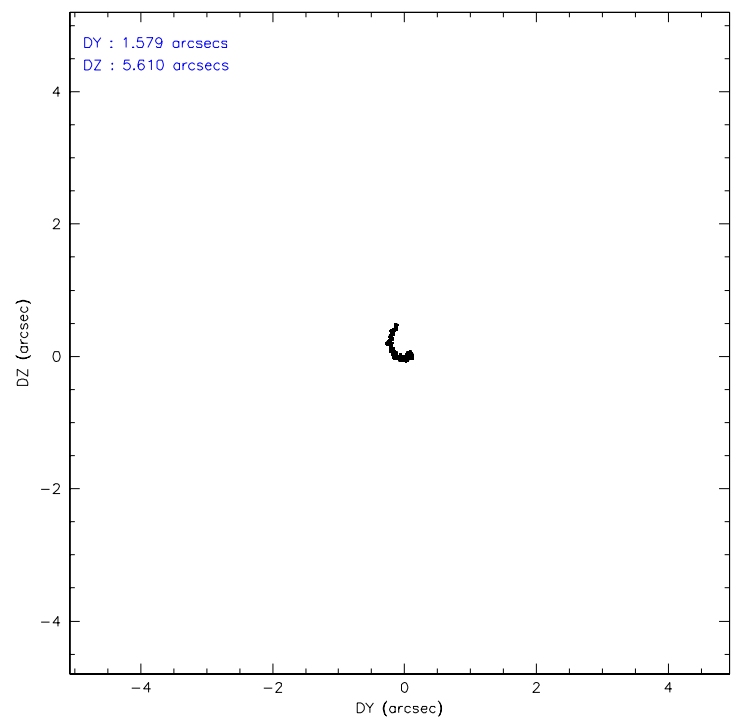
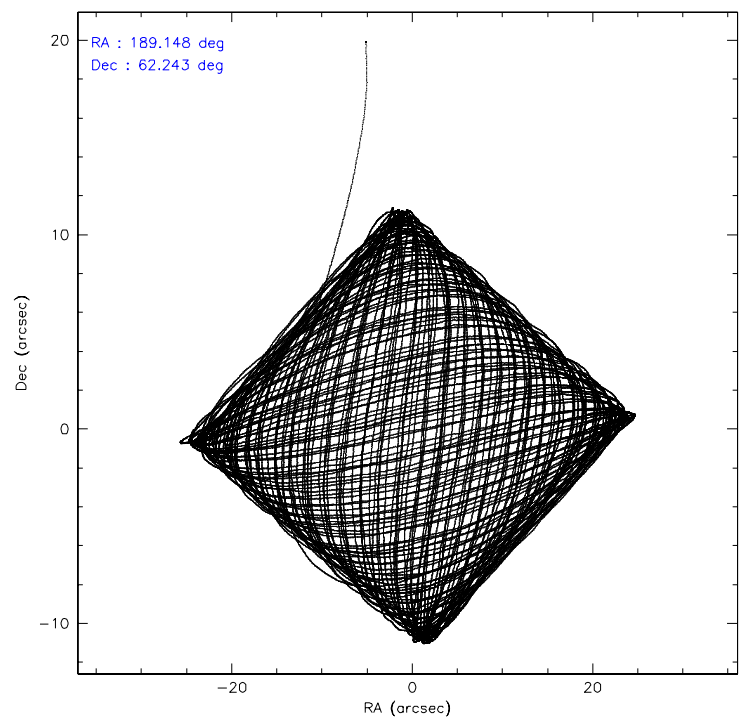
	ccd 0	ccd 1	ccd 2	ccd 3	ccd 6
level 1 events	424053	430891	456989	463244	463462
rejected events	377829	381495	411007	417638	416812
rejected %	89%	88%	89%	90%	89%

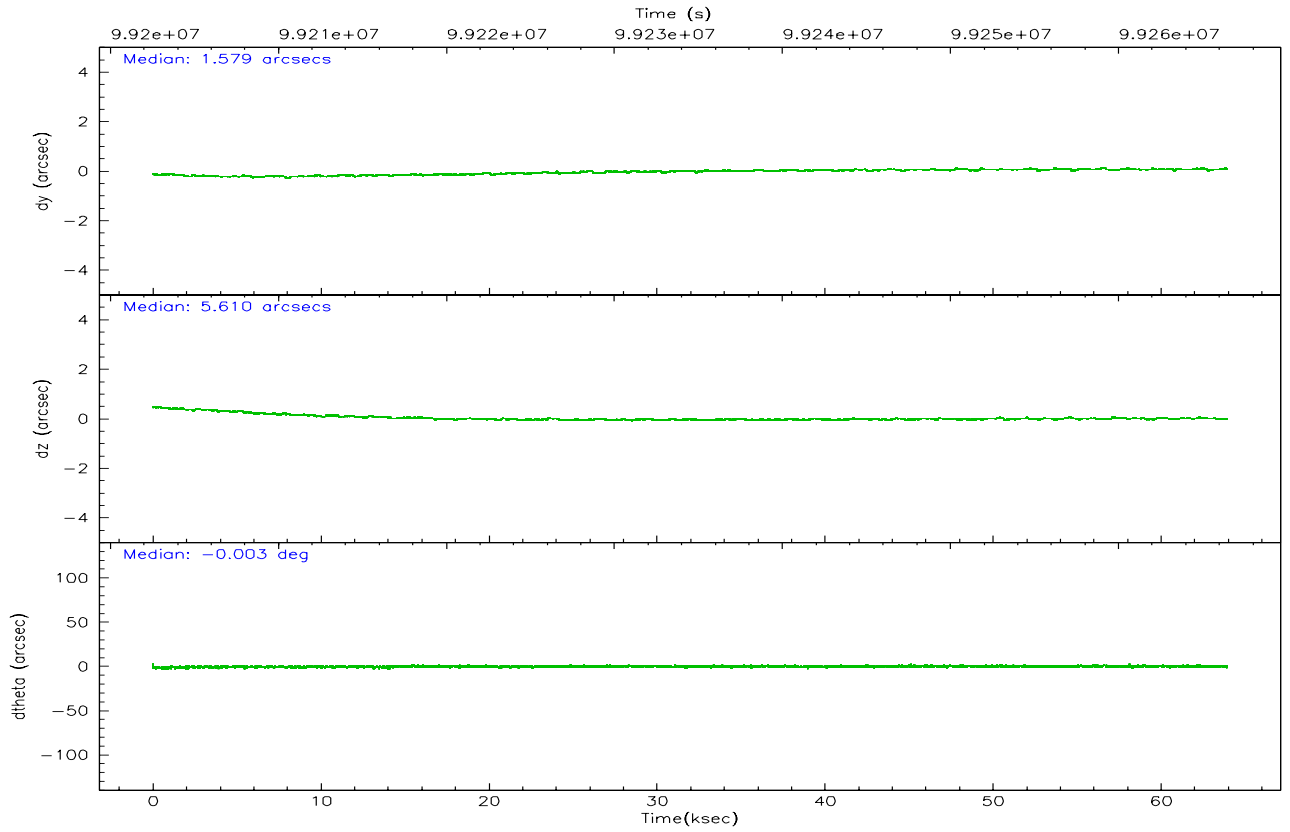
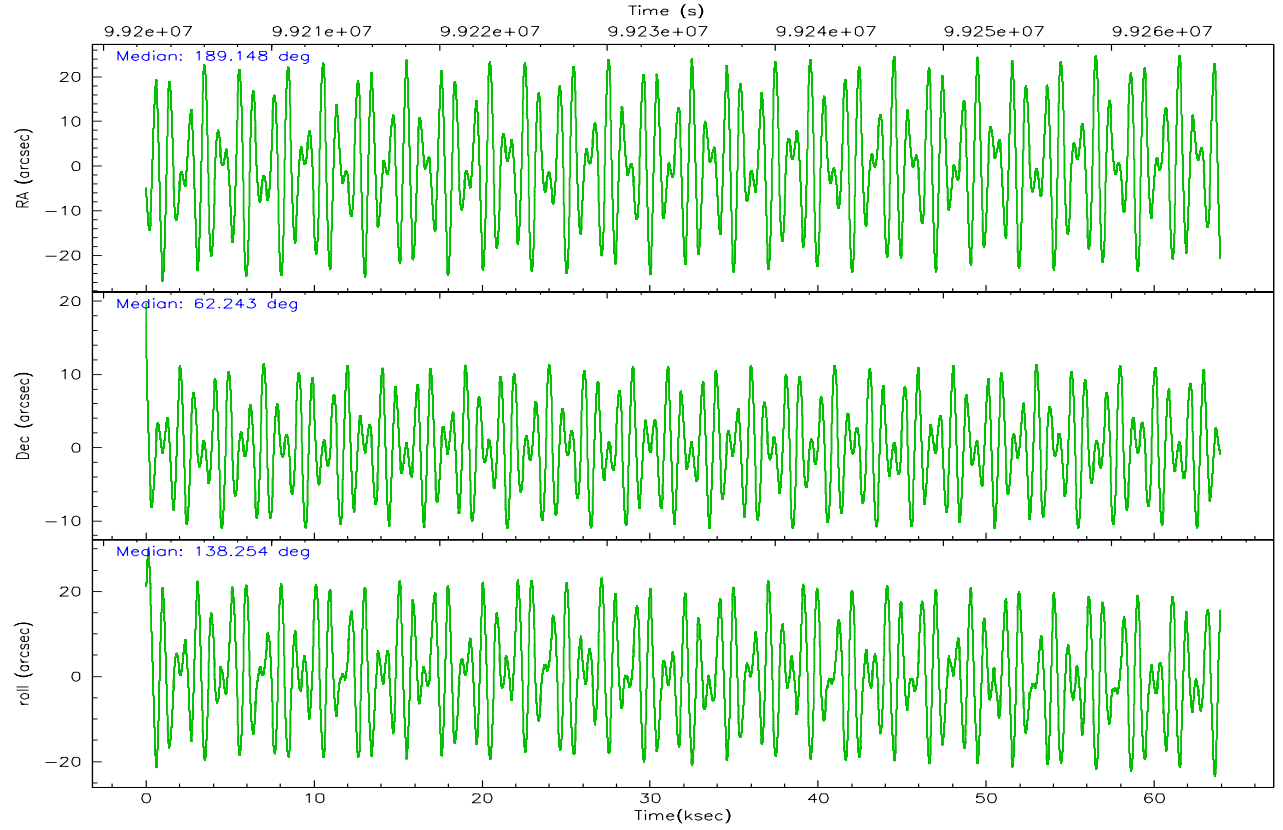
	ccd 0	ccd 1	ccd 2	ccd 3	ccd 6
grade 0 events	43909	45050	44278	43505	46589
	10%	10%	9%	9%	10%
grade 1 events	325	322	292	288	293
	0%	0%	0%	0%	0%
grade 2 events	17392	17875	16839	16865	17582
	4%	4%	3%	3%	3%
grade 3 events	7433	8049	7143	7260	7712
	1%	1%	1%	1%	1%
grade 4 events	6965	7795	7074	7319	7795
	1%	1%	1%	1%	1%
grade 5 events	14696	16017	13795	16051	16993
	3%	3%	3%	3%	3%
grade 6 events	14727	15532	13930	14382	16633
	3%	3%	3%	3%	3%
grade 7 events	318606	320251	353638	357574	349865
	75%	74%	77%	77%	75%

2.2 Compared Parameters

Parameter	Planned	Actual	Parameter	Planned	Actual
Instrument	ACIS	ACIS	Obspar format version number	6	6
Detector	ACIS-01236	ACIS-01236	Obspar file type	PREDICTED	ACTUAL
Grating	NONE	NONE	Obspar update status	NONE	UPDATED
Data mode	FAINT	FAINT	Number of optional ACIS chips dropped	0	0
Observation mode	POINTING	POINTING	On-chip summing requested	N	N
Pointing RA	189.206020	189.1482731174818	Subarray requested	NONE	NONE
Pointing Dec	62.237134	62.24273811527966	Alternating exposures requested	N	N
Pointing Roll	137.999830	138.259617293903	Primary exposure time	0.000000	3.1
Roll angle	128.000000	128.000000			
Roll tolerance	10.000000	10.000000			
Roll constraint allows 180D rotation	N	N			
SIM focus pos (mm)	-0.782348	-0.7809083437167272			
SIM defocus (mm)	0	0.001439871863259334			
SIM translation stage pos (mm)	-227.712463	-227.7139939163845			
SIM translation stage offset (mm)	-5.88	-5.878459086545149			
Observation start time	99202678.184000	99200667.849595			
Observation start date	2001-02-22T04:16:54	2001-02-22T03:44:27			
Observation end time	99369072.184000	99266998.164654			
Observation end date	2001-02-24T02:30:08	2001-02-22T22:09:58			
Read mode	TIMED	TIMED			

2.3 Aspect



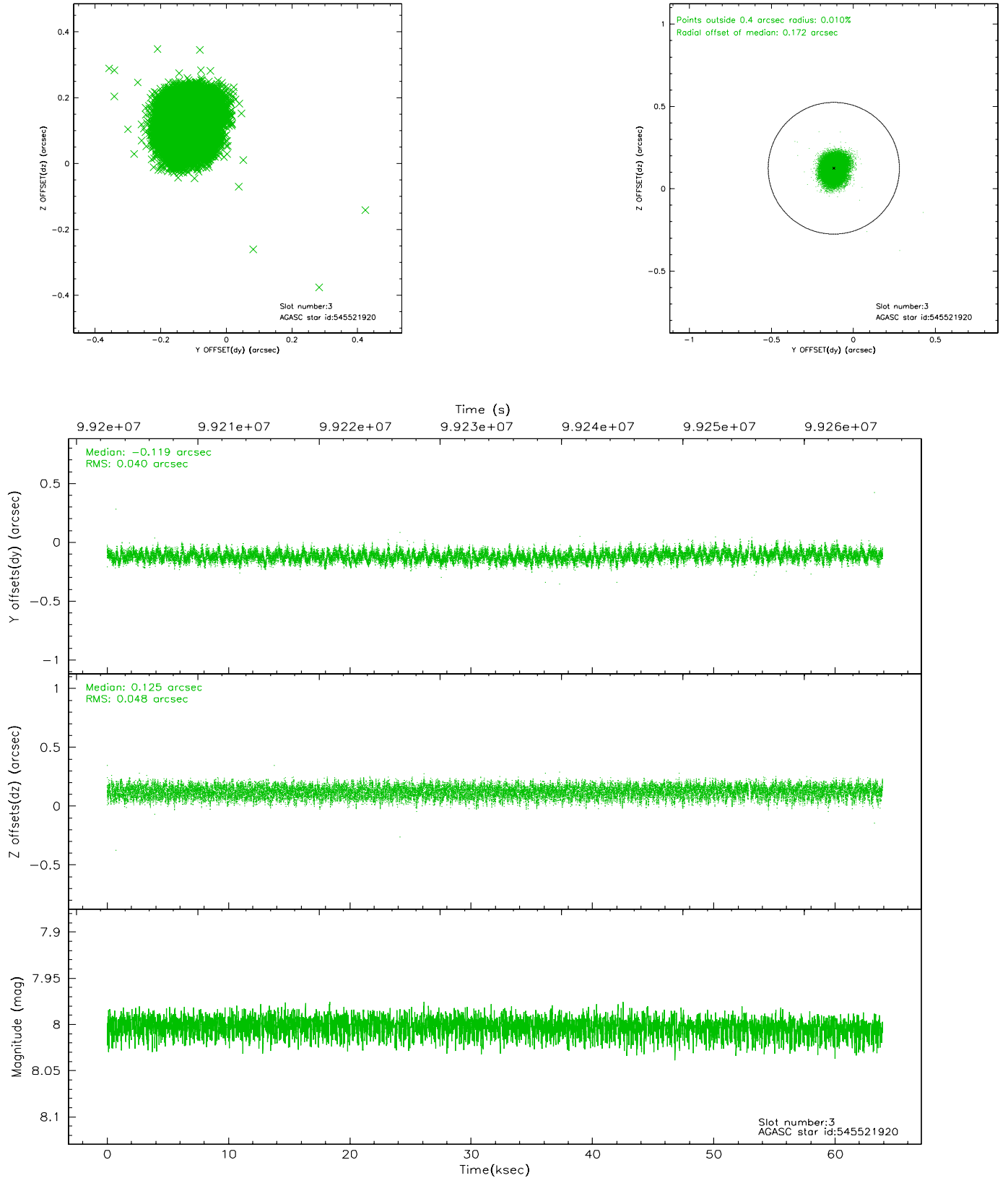


Slot Statistics

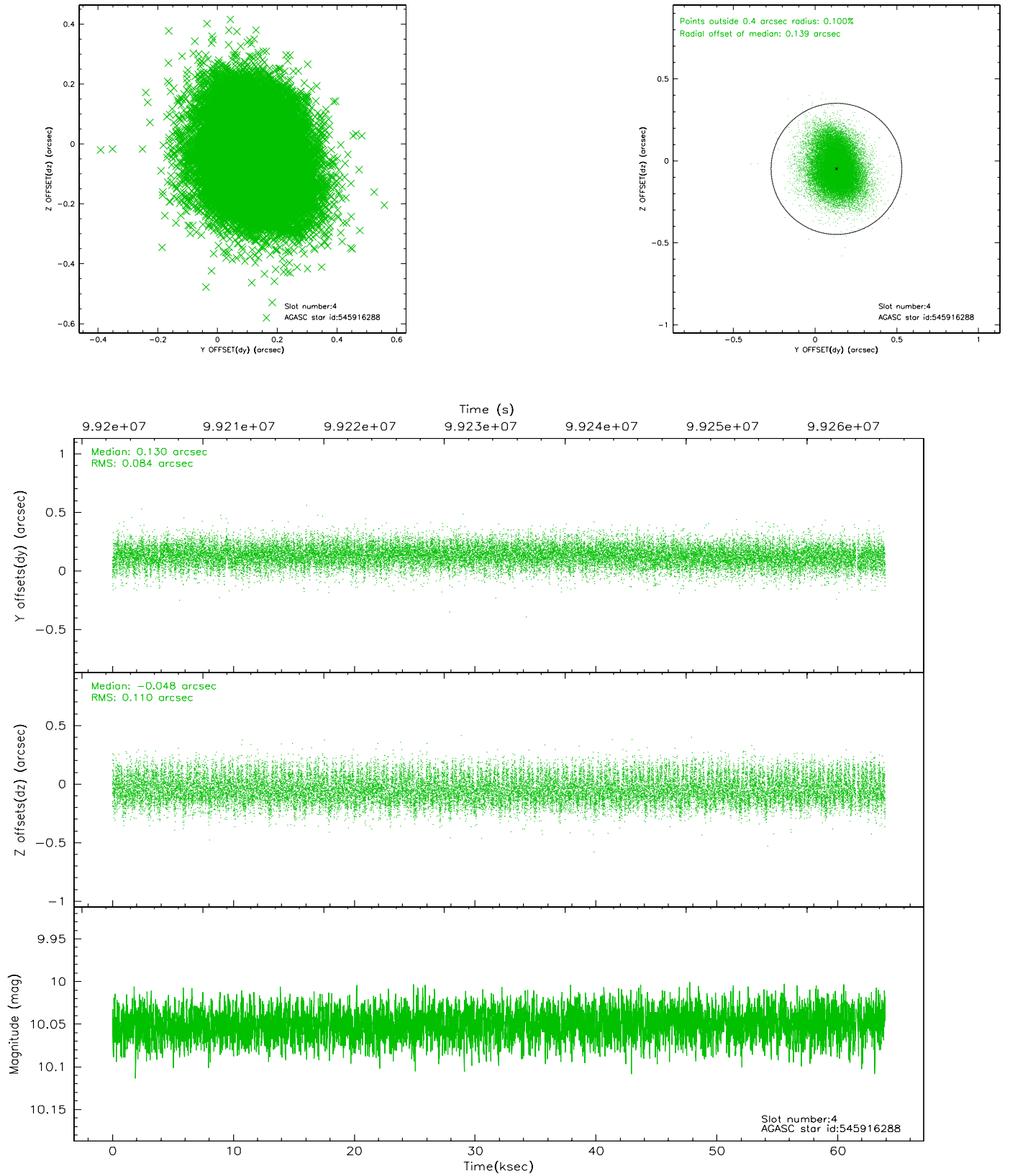
slot	status	id	mag	n_pts	med_dy	med_dz	dr1	dr2	ra	dec	mean_y	mean_z
0	FID	ACIS-I-2	7.16	15592	-0.061	-0.043	0.012	0.021	0.000000	0.000000	-756.35	-955.29
1	FID	ACIS-I-4	7.15	15585	-0.043	0.053	0.014	0.027	0.000000	0.000000	2157.70	950.97
2	FID	ACIS-I-5	7.22	15592	0.005	0.060	0.013	0.021	0.000000	0.000000	-1809.88	948.00
3	GUIDE	545521920	8.00	31117	-0.119	0.125	0.067	0.104	190.203465	62.042567	-1711.10	-616.39
4	GUIDE	545916288	10.05	31093	0.130	-0.048	0.146	0.238	188.813969	62.949161	2193.70	-1477.55
5	GUIDE	545521832	10.11	31145	-0.002	0.071	0.118	0.192	188.976813	62.367279	598.38	-93.32
6	GUIDE	545523632	10.06	31153	0.036	-0.163	0.125	0.200	188.952319	61.550910	-1329.34	2125.32
7	GUIDE	545916224	9.59	31158	-0.043	0.009	0.106	0.172	188.817359	62.651242	1476.45	-679.77

2.4 Star Slots

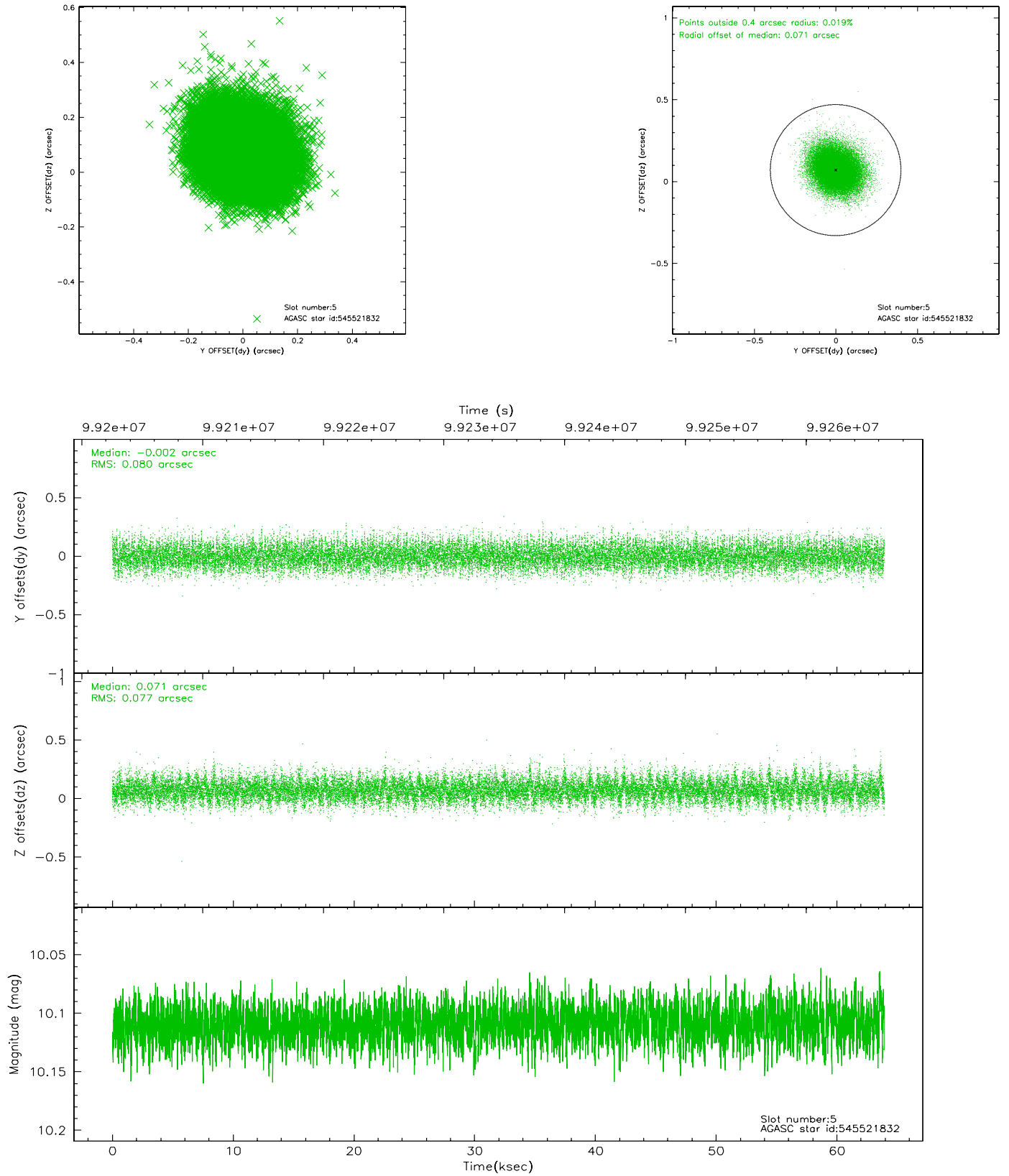
2.4.1 Slot 3



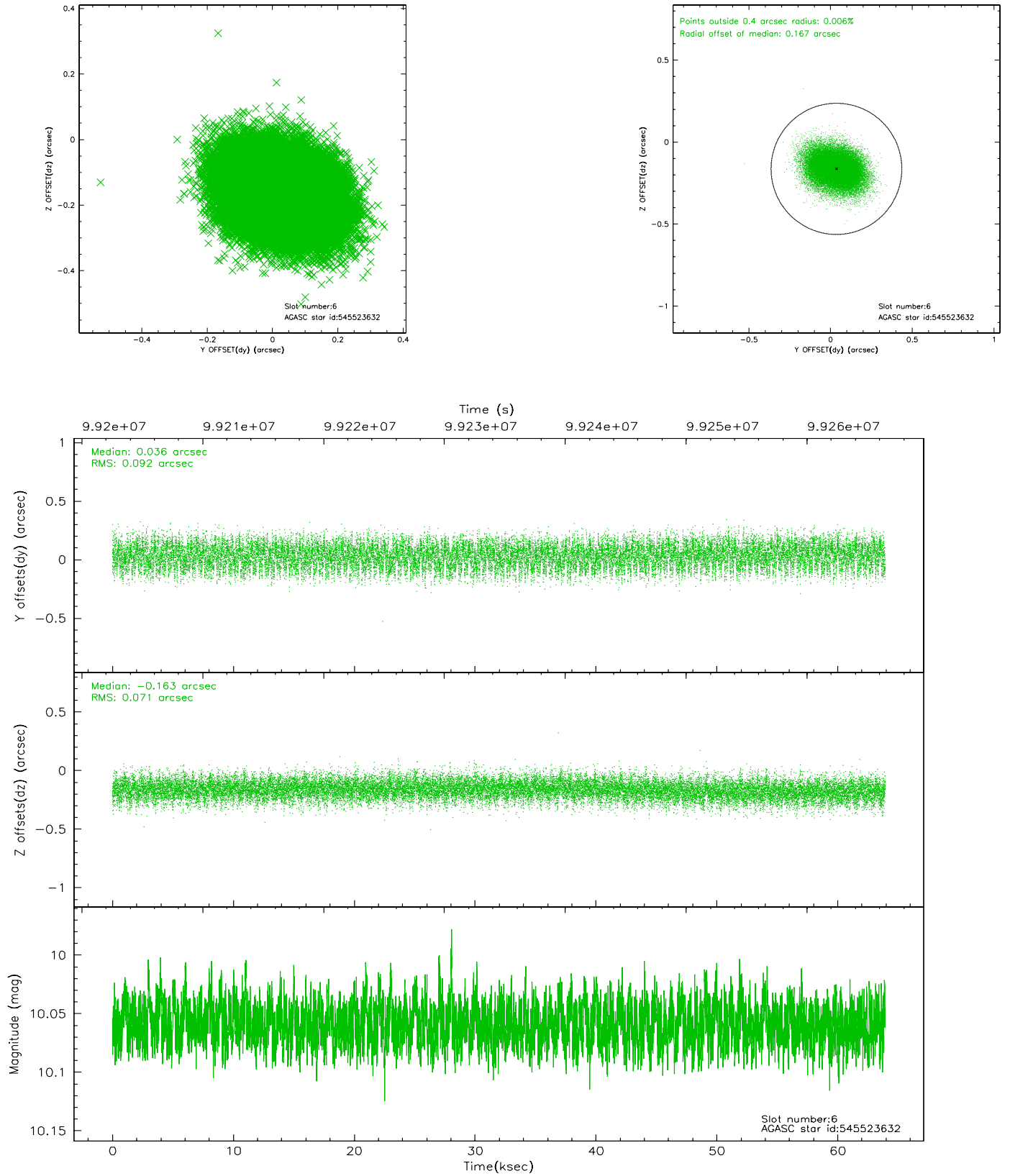
2.4.2 Slot 4



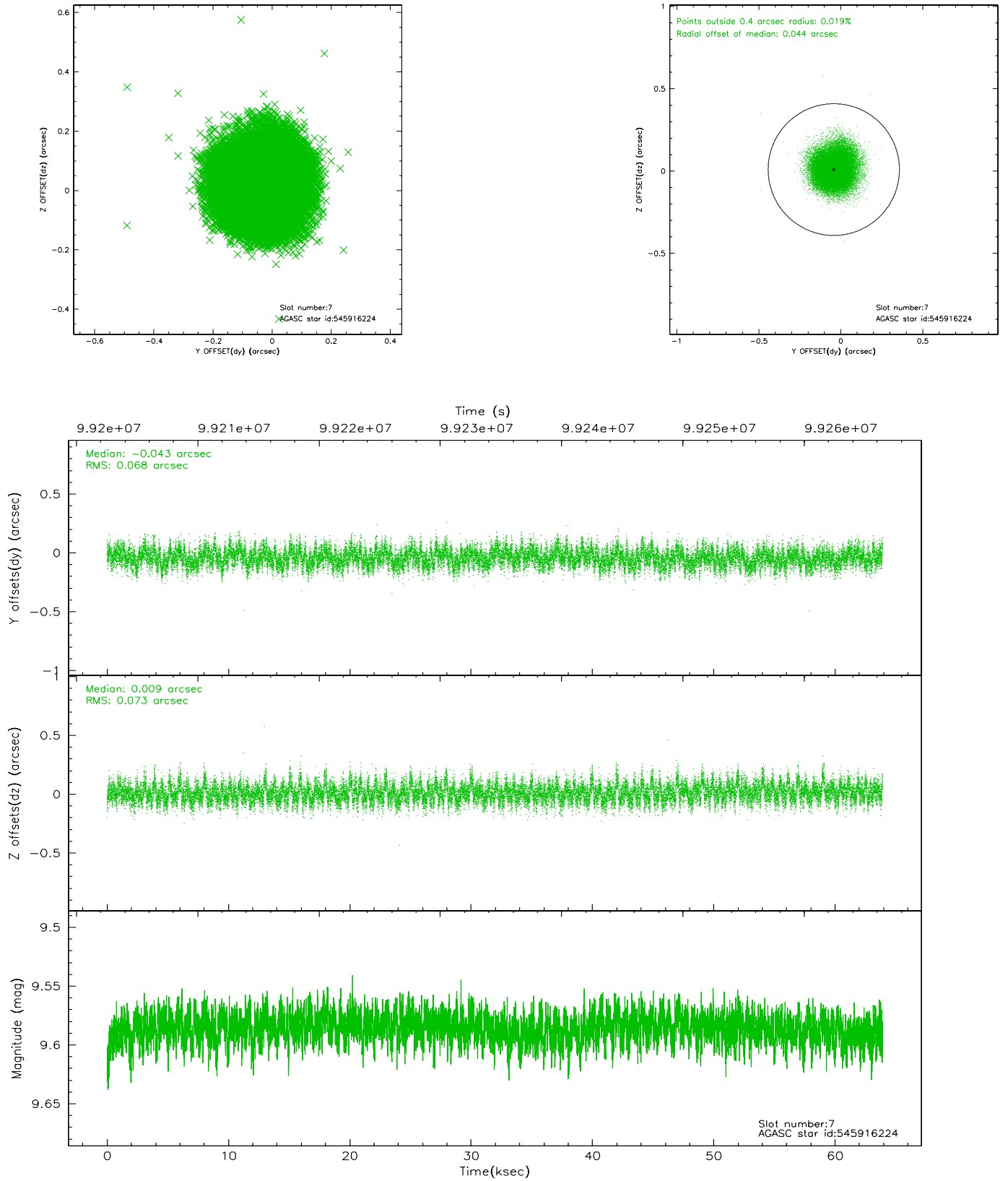
2.4.3 Slot 5



2.4.4 Slot 6

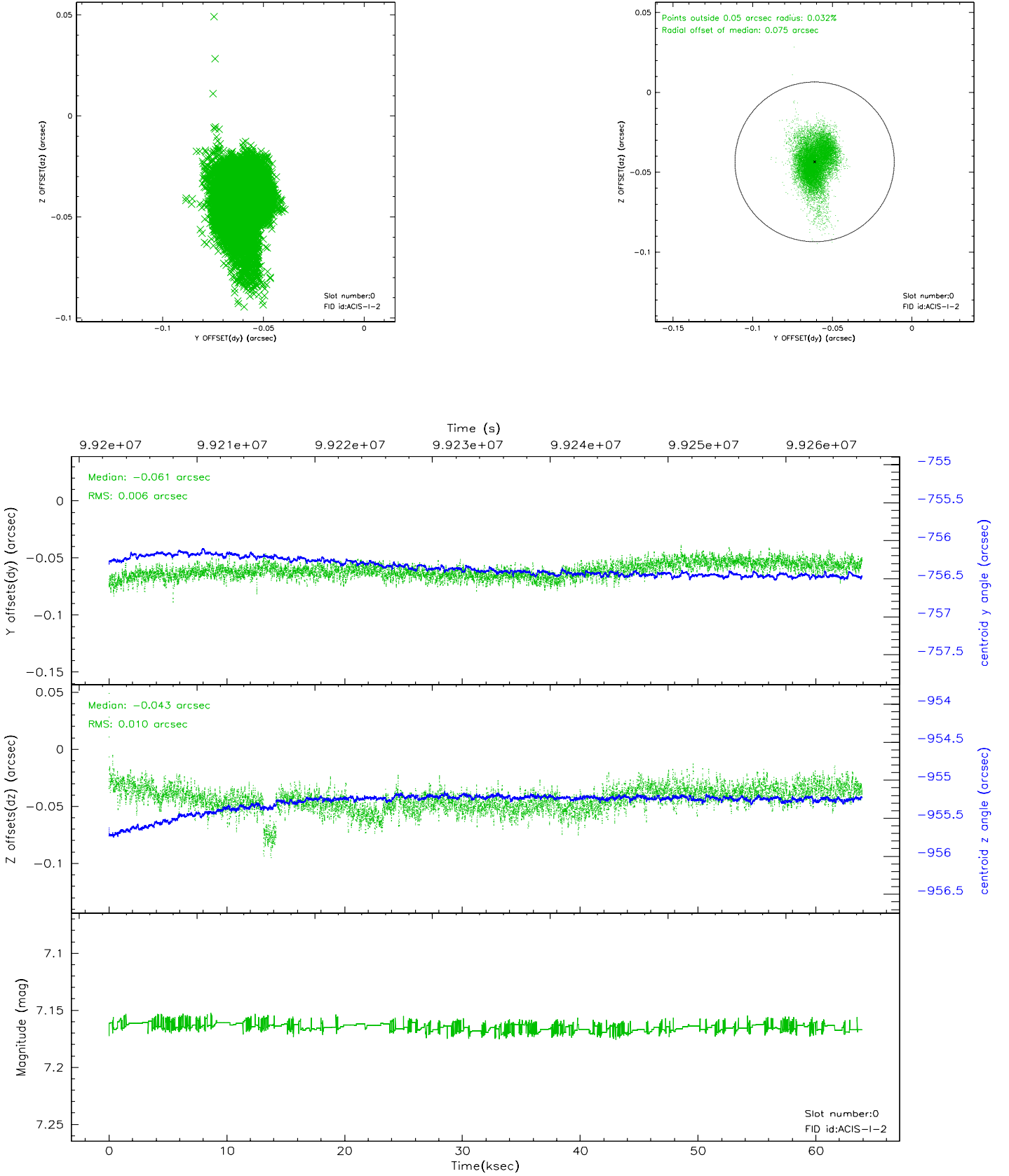


2.4.5 Slot 7

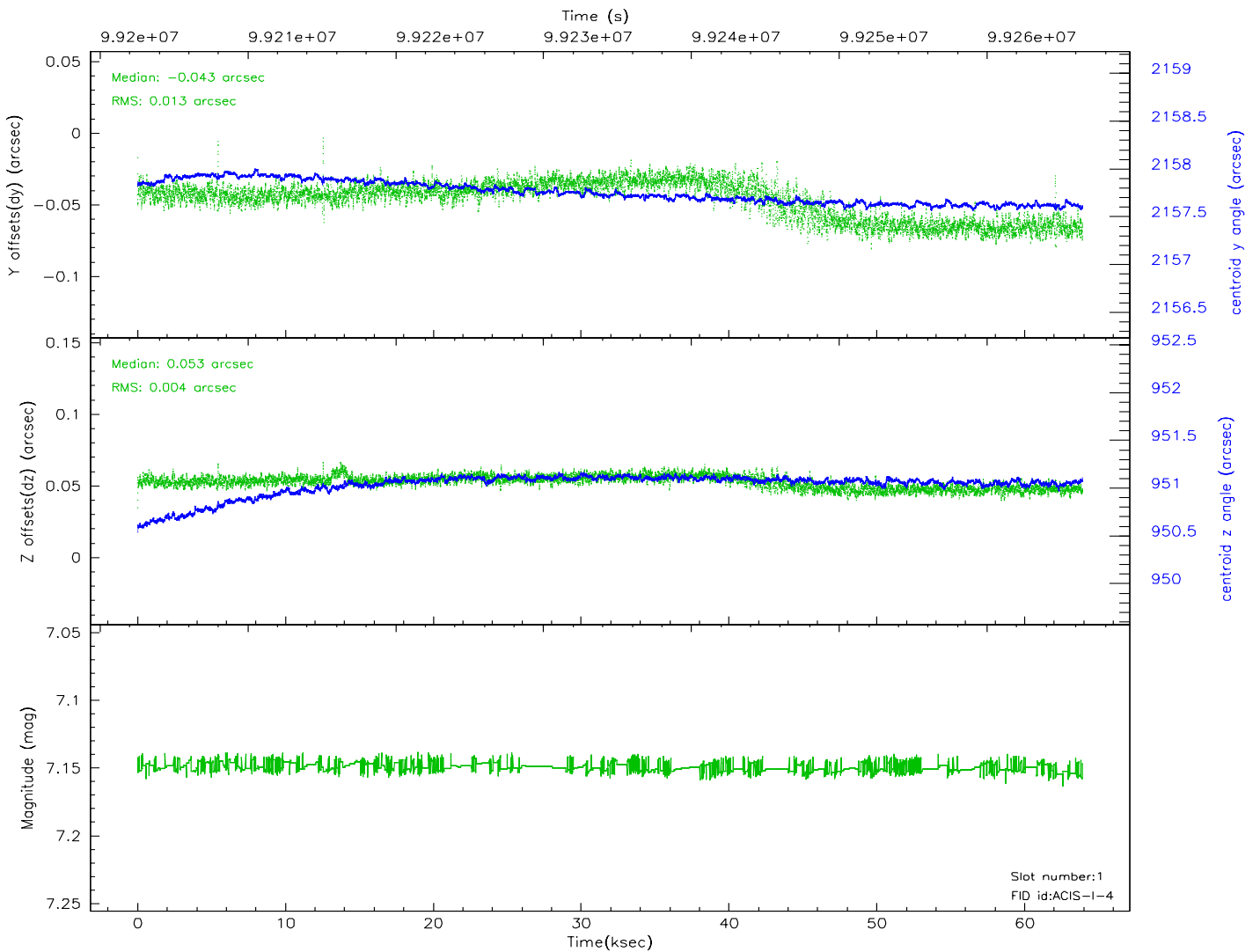
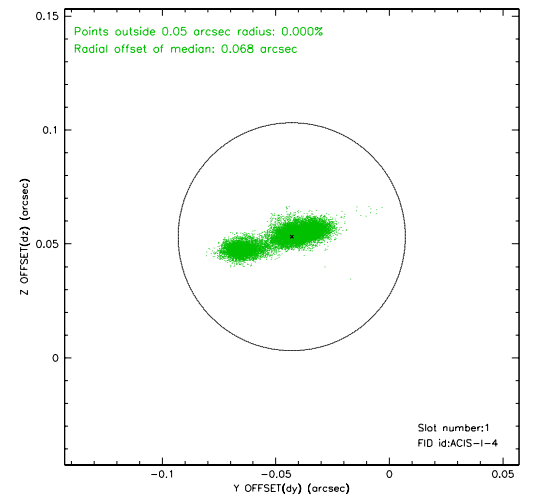
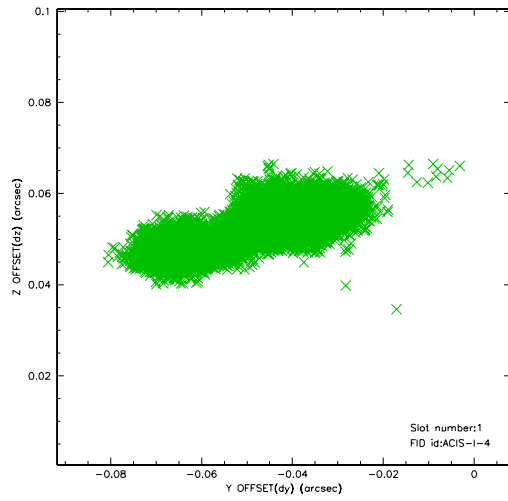


2.5 FID Slots

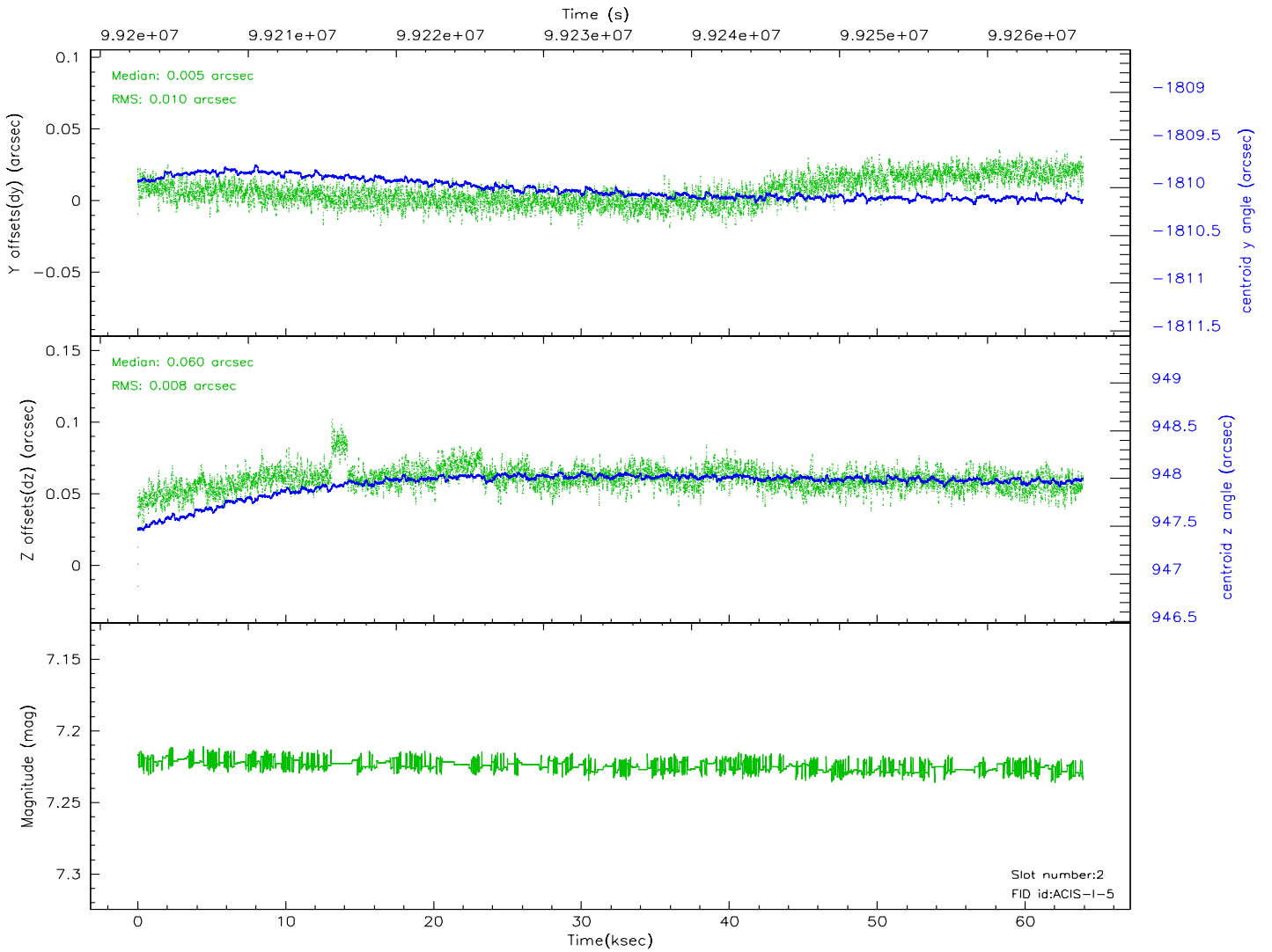
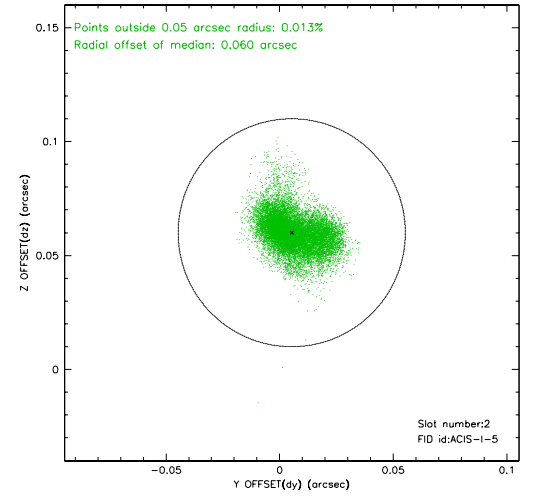
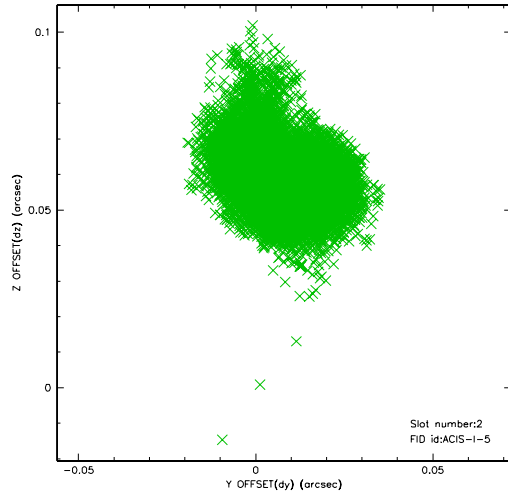
2.5.1 Slot 0



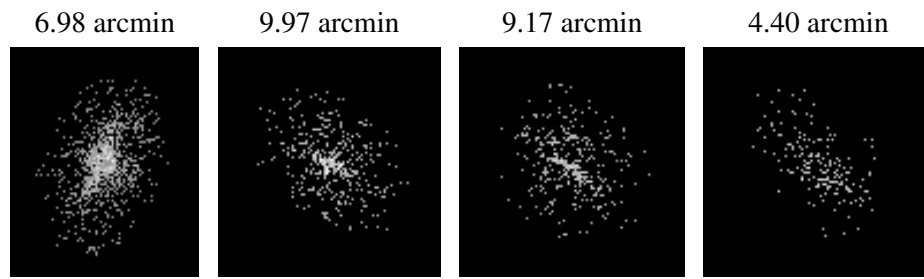
2.5.2 Slot 1



2.5.3 Slot 2



3 Point Sources



A Summary

A.1 Status

V&V Scientist	Jen Lauer
V&V Date (YYYY-MM-DD)	2006.11.09
V&V Edition	1
V&V Disposition and Status	OK
V&V Charge Time	63.9

A.2 Comments

Roll constraint: requested: 128 +/- 10 actual: 138.26 Roll constraint has been satisfied. Obsid time shortened by T00, but difference will be made up in Obsids 2421 and 2423.