

# V&V Reference Report

## L2 ASCDS Version : 7.6.9

Observation 2232 - L2 Version 001  
Chandra X-Ray Center

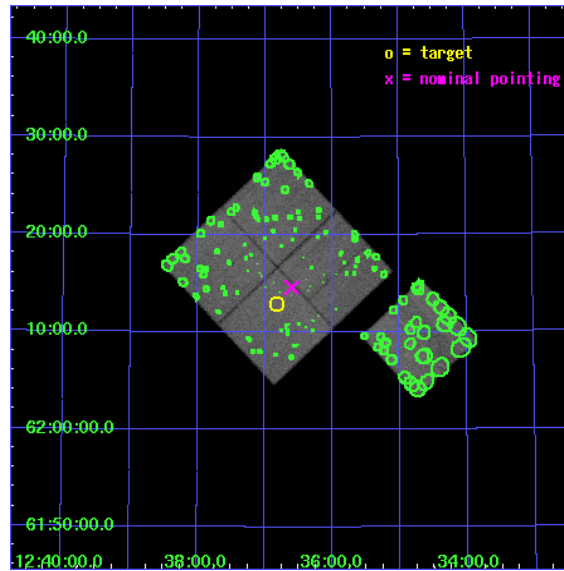
L2 Processing Date : Nov 9 2006

## Contents

<b>1</b>	<b>Front</b>	<b>2</b>
<b>2</b>	<b>OBI</b>	<b>3</b>
2.1	OBI . . . . .	3
2.1.1	Images . . . . .	3
2.1.2	Bias . . . . .	3
2.1.3	Parameters . . . . .	4
2.1.4	Events . . . . .	4
2.2	Compared Parameters . . . . .	5
2.3	Aspect . . . . .	6
2.4	Star Slots . . . . .	9
2.4.1	Slot 3 . . . . .	9
2.4.2	Slot 4 . . . . .	10
2.4.3	Slot 6 . . . . .	11
2.4.4	Slot 7 . . . . .	12
2.5	FID Slots . . . . .	13
2.5.1	Slot 0 . . . . .	13
2.5.2	Slot 1 . . . . .	14
2.5.3	Slot 2 . . . . .	15
<b>3</b>	<b>Point Sources</b>	<b>16</b>
<b>A</b>	<b>Summary</b>	<b>17</b>
A.1	Status . . . . .	17
A.2	Comments . . . . .	17

# 1 Front

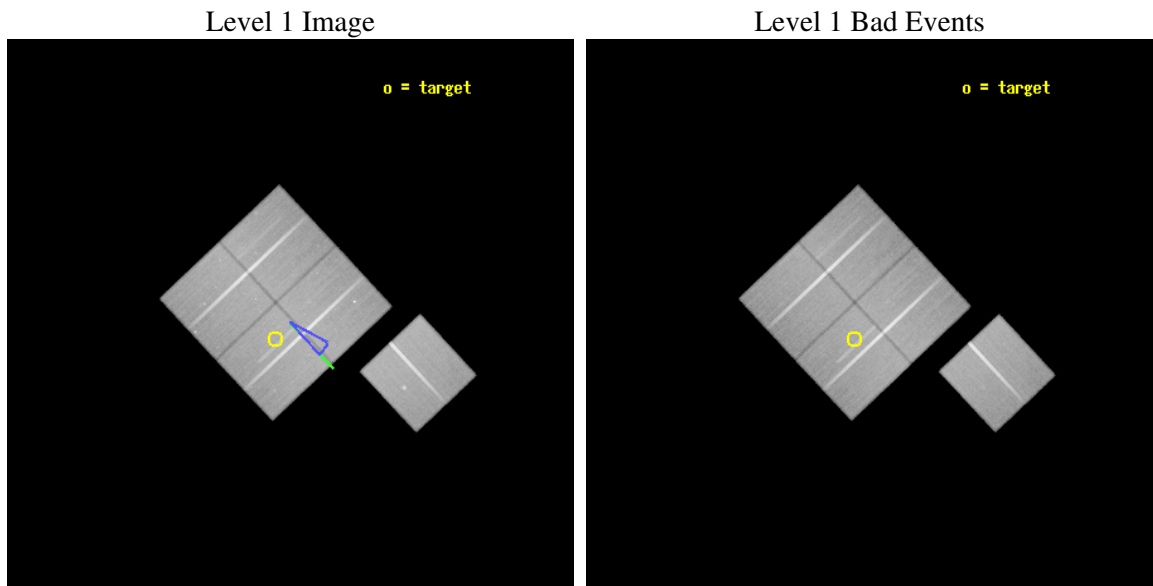
seq_num	900059
obs_id	2232
title	THE CHANDRA DEEP SURVEY OF THE HUBBLE DEEP FIELD NORTH (HDF-N) AREA
observer	Prof. William Brandt
object	HDF-N
dtcycle	0
cycle	P
ra_targ	189.205833
dec_targ	62.216111
ra_nom	189.1497359081
dec_nom	62.243409680988
roll_nom	136.80796934116
revision	3
ontime	130953.21781771
livetime	129242.21762056
ontime0	130953.21781771
ontime1	130959.4997482
ontime2	130953.21781771
ontime3	130953.21781771
ontime6	130956.35875805
l2events	402043



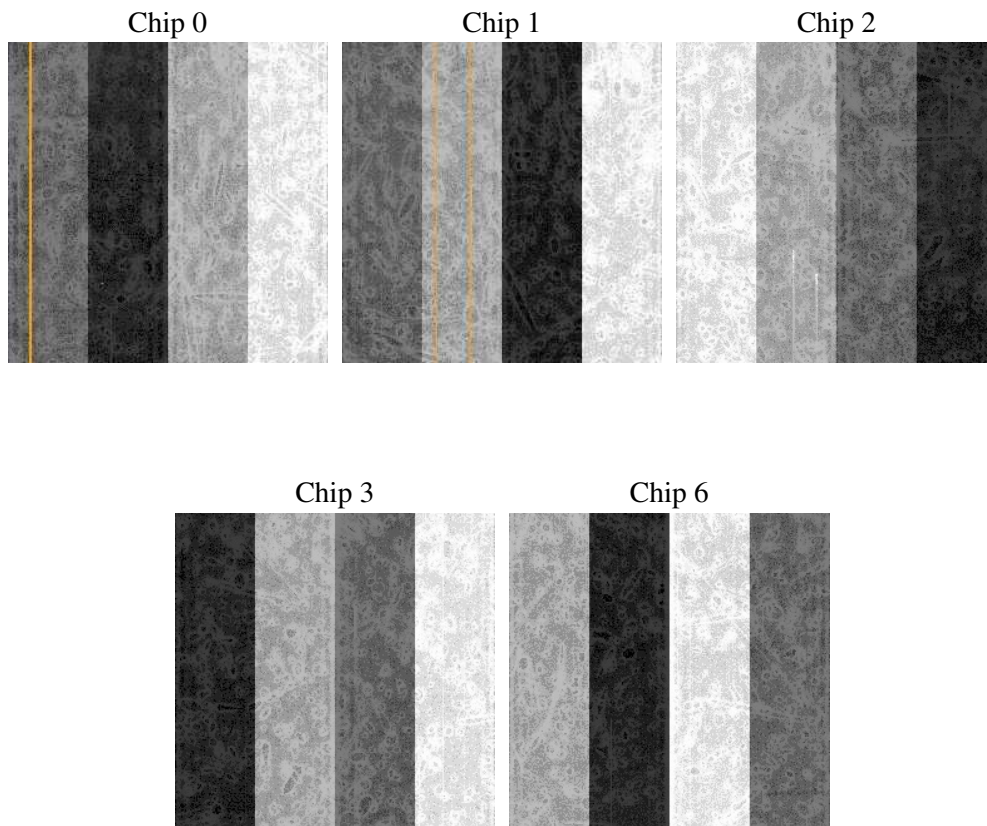
## 2 OBI

### 2.1 OBI

#### 2.1.1 Images



#### 2.1.2 Bias



### 2.1.3 Parameters

obi_num	0
ascdsver	7.6.9
caldsver	3.2.3
date	2006-11-09T04:40:16
revision	3

sched_exp_time	130805.477000
ontime	132619.32160543
ontime0	132619.32160543
ontime1	132625.60353592
ontime2	132619.32160543
ontime3	132619.32160543
ontime6	132622.46254577
l1events	4045245

### 2.1.4 Events

	ccd 0	ccd 1	ccd 2	ccd 3	ccd 6
level 1 events	761748	780229	829834	832855	840579
rejected events	667585	680620	737062	742643	746576
rejected %	87%	87%	88%	89%	88%

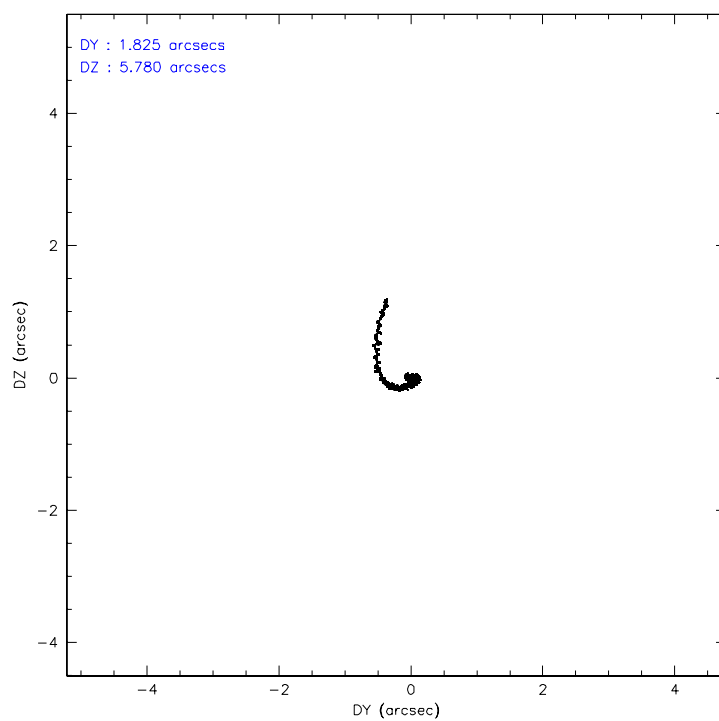
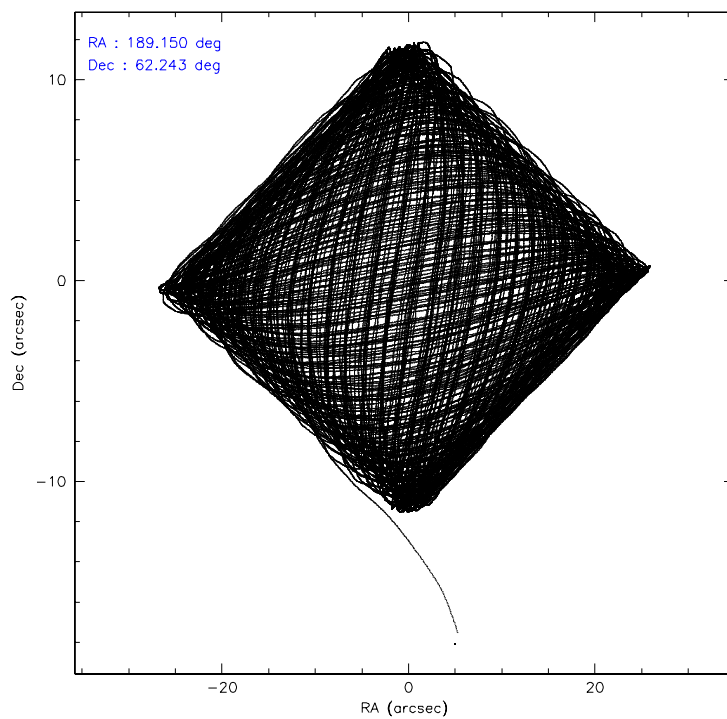
	ccd 0	ccd 1	ccd 2	ccd 3	ccd 6
grade 0 events	40039	41239	40903	38993	39683
	5%	5%	4%	4%	4%
grade 1 events	372	390	409	390	406
	0%	0%	0%	0%	0%
grade 2 events	19976	19895	19235	18116	18500
	2%	2%	2%	2%	2%
grade 3 events	9712	10459	8961	8807	9576
	1%	1%	1%	1%	1%
grade 4 events	8923	10521	8751	8649	9305
	1%	1%	1%	1%	1%
grade 5 events	29534	31690	27911	31840	33964
	3%	4%	3%	3%	4%
grade 6 events	16772	18738	16100	16850	18208
	2%	2%	1%	2%	2%
grade 7 events	636420	647297	707564	709210	710937
	83%	82%	85%	85%	84%

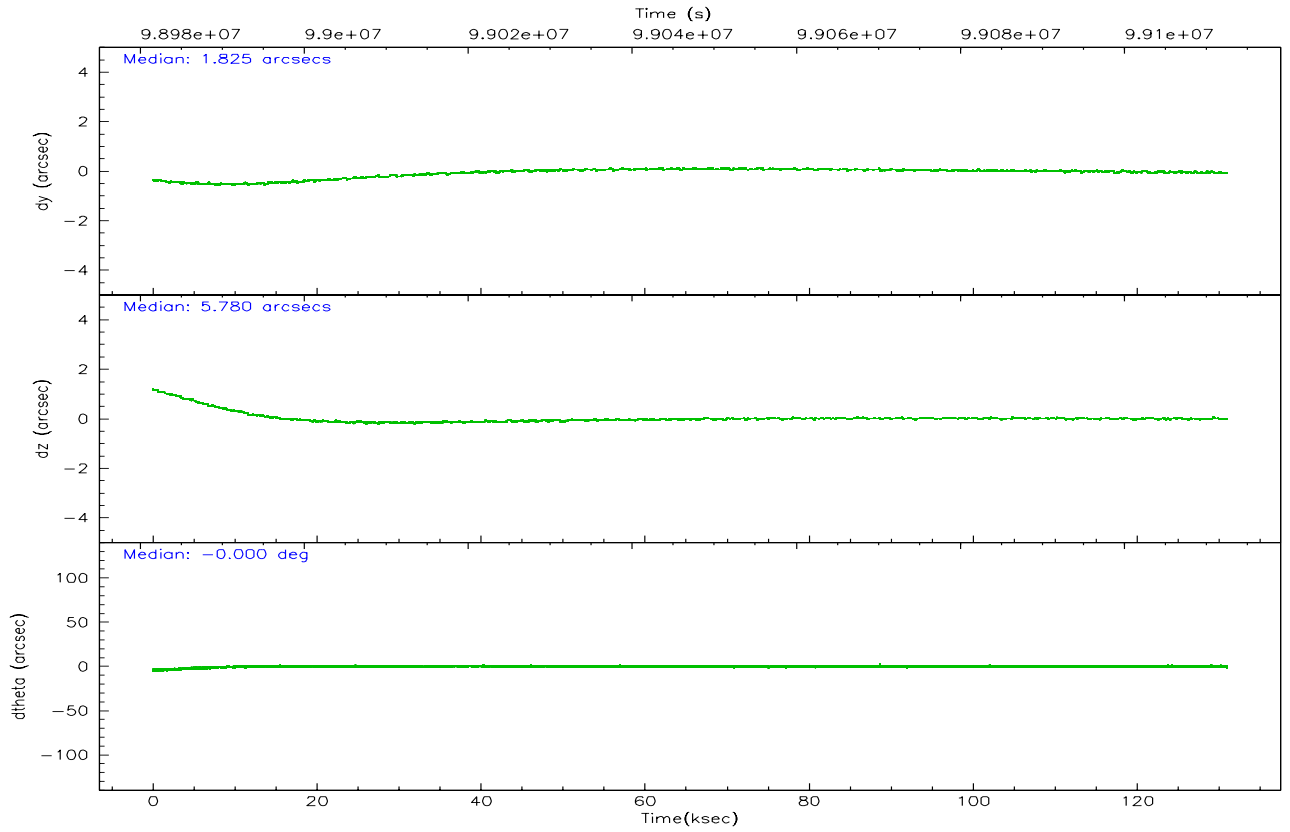
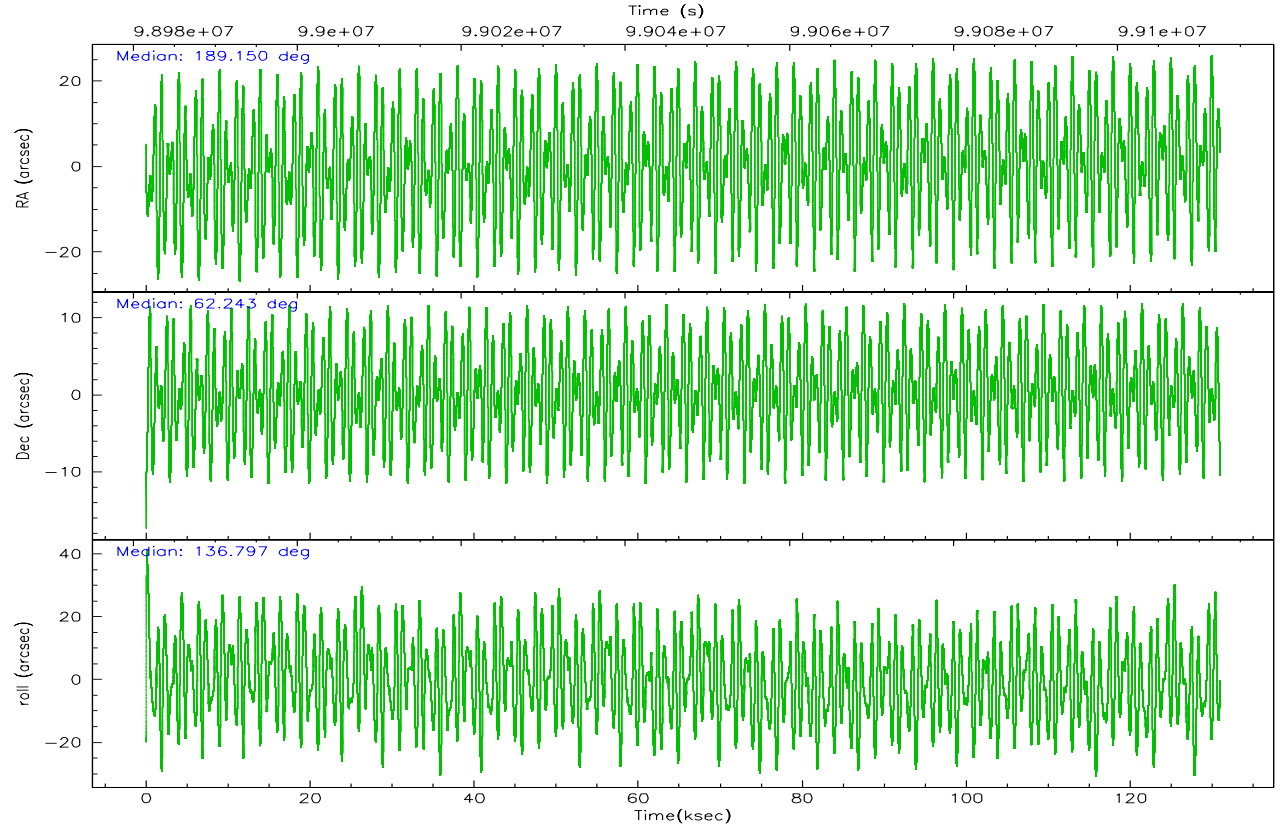


## 2.2 Compared Parameters

Parameter	Planned	Actual	Parameter	Planned	Actual
Instrument	ACIS	ACIS	Obspar format version number	6	6
Detector	ACIS-01236	ACIS-01236	Obspar file type	PREDICTED	ACTUAL
Grating	NONE	NONE	Obspar update status	NONE	UPDATED
Data mode	FAINT	FAINT	Number of optional ACIS chips dropped	0	0
Observation mode	POINTING	POINTING	On-chip summing requested	N	N
Pointing RA	189.207160	189.1497359081008	Subarray requested	NONE	NONE
Pointing Dec	62.237102	62.24340968098848	Alternating exposures requested	N	N
Pointing Roll	136.548476	136.807969341162	Primary exposure time	0.000000	3.1
Roll angle	128.000000	128.000000			
Roll tolerance	10.000000	10.000000			
Roll constraint allows 180D rotation	N	N			
SIM focus pos (mm)	-0.782348	-0.7809083437167272			
SIM defocus (mm)	0	0.001439871863259334			
SIM translation stage pos (mm)	-227.712463	-227.7139939163845			
SIM translation stage offset (mm)	-5.88	-5.878459086545149			
Observation start time	98981727.184000	98979898.728578			
Observation start date	2001-02-19T14:54:23	2001-02-19T14:24:58			
Observation end time	99112533.184000	99113477.24623001			
Observation end date	2001-02-21T03:14:29	2001-02-21T03:31:17			
Read mode	TIMED	TIMED			

## 2.3 Aspect



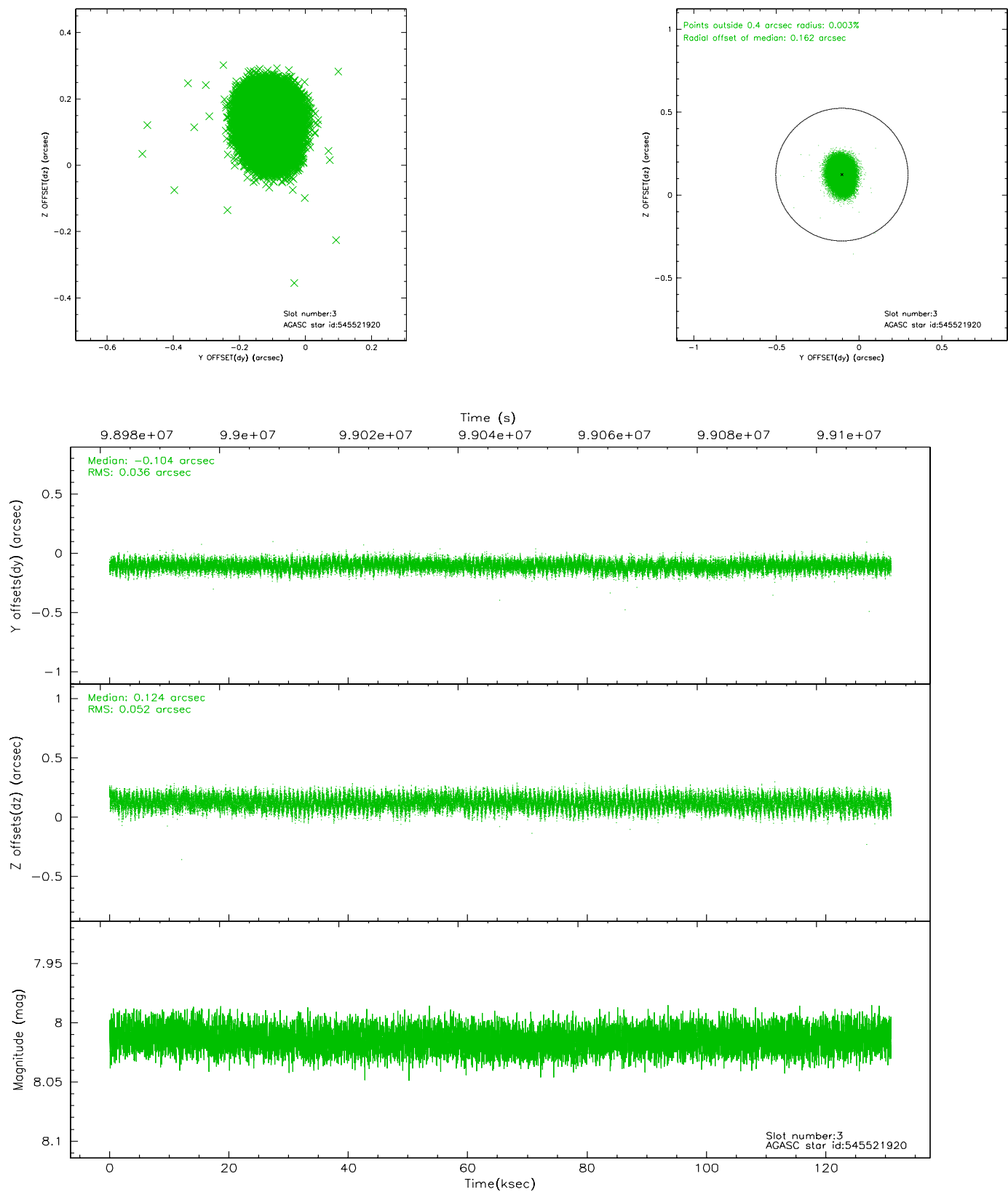


### Slot Statistics

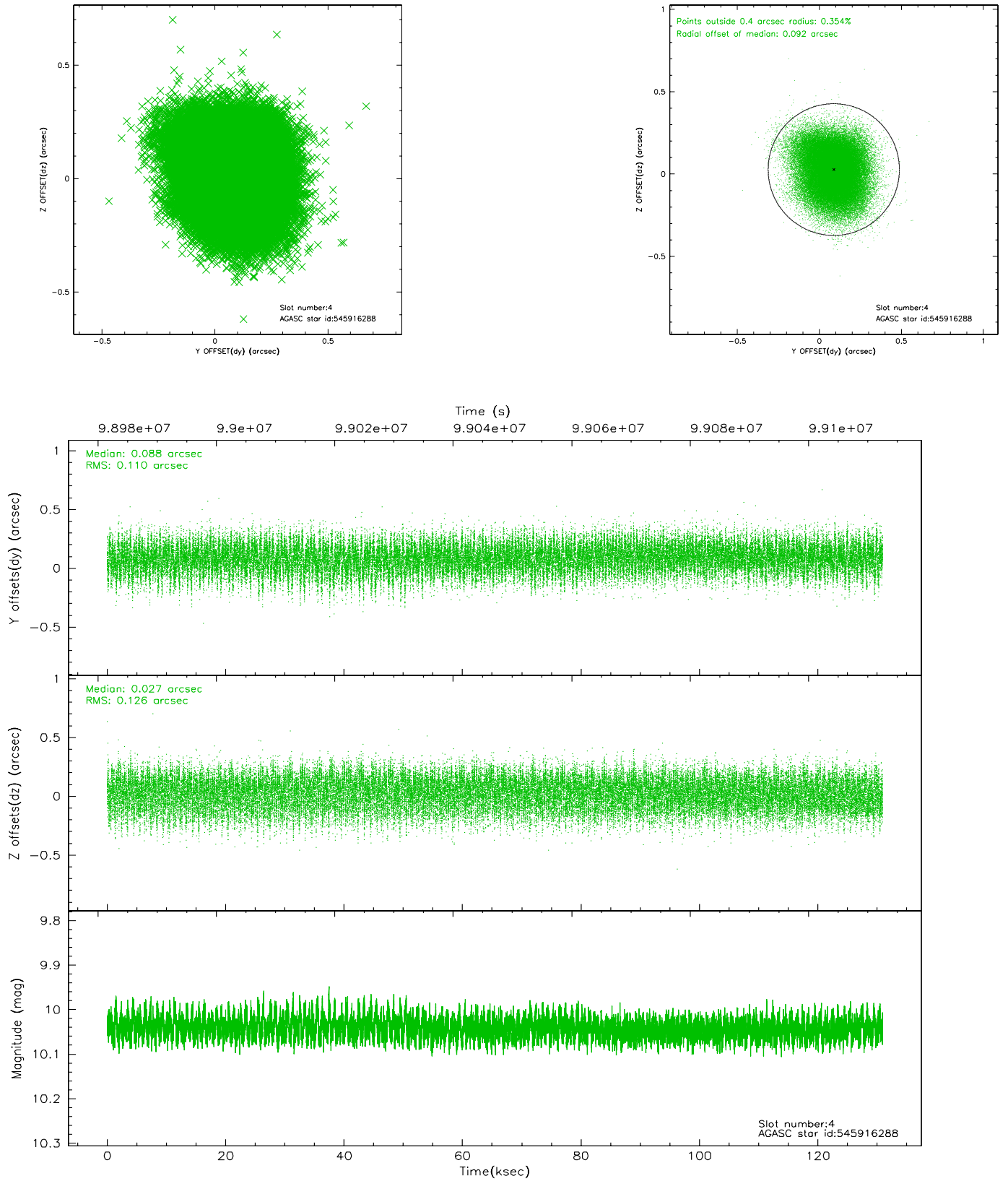
slot	status	id	mag	n_pts	med_dy	med_dz	dr1	dr2	ra	dec	mean_y	mean_z
0	FID	ACIS-I-1	7.24	31941	0.043	0.020	0.008	0.023	0.000000	0.000000	937.98	-949.84
1	FID	ACIS-I-5	7.23	31937	-0.081	0.093	0.011	0.028	0.000000	0.000000	-1810.25	947.86
2	FID	ACIS-I-6	7.26	31939	-0.053	-0.043	0.012	0.029	0.000000	0.000000	403.63	1592.04
3	GUIDE	545521920	8.01	63859	-0.104	0.124	0.068	0.109	190.203465	62.042567	-1692.92	-657.86
4	GUIDE	545916288	10.04	63496	0.088	0.027	0.180	0.286	188.813969	62.949161	2232.49	-1419.50
5	OMITTED		0.00	0	0.000	0.000	0.000	0.000	0.000000	0.000000	0.00	0.00
6	GUIDE	545523632	10.05	63808	0.041	-0.154	0.153	0.253	188.952319	61.550910	-1380.90	2092.63
7	GUIDE	545916224	9.61	63792	-0.030	0.014	0.095	0.155	188.817359	62.651242	1495.23	-640.33

## 2.4 Star Slots

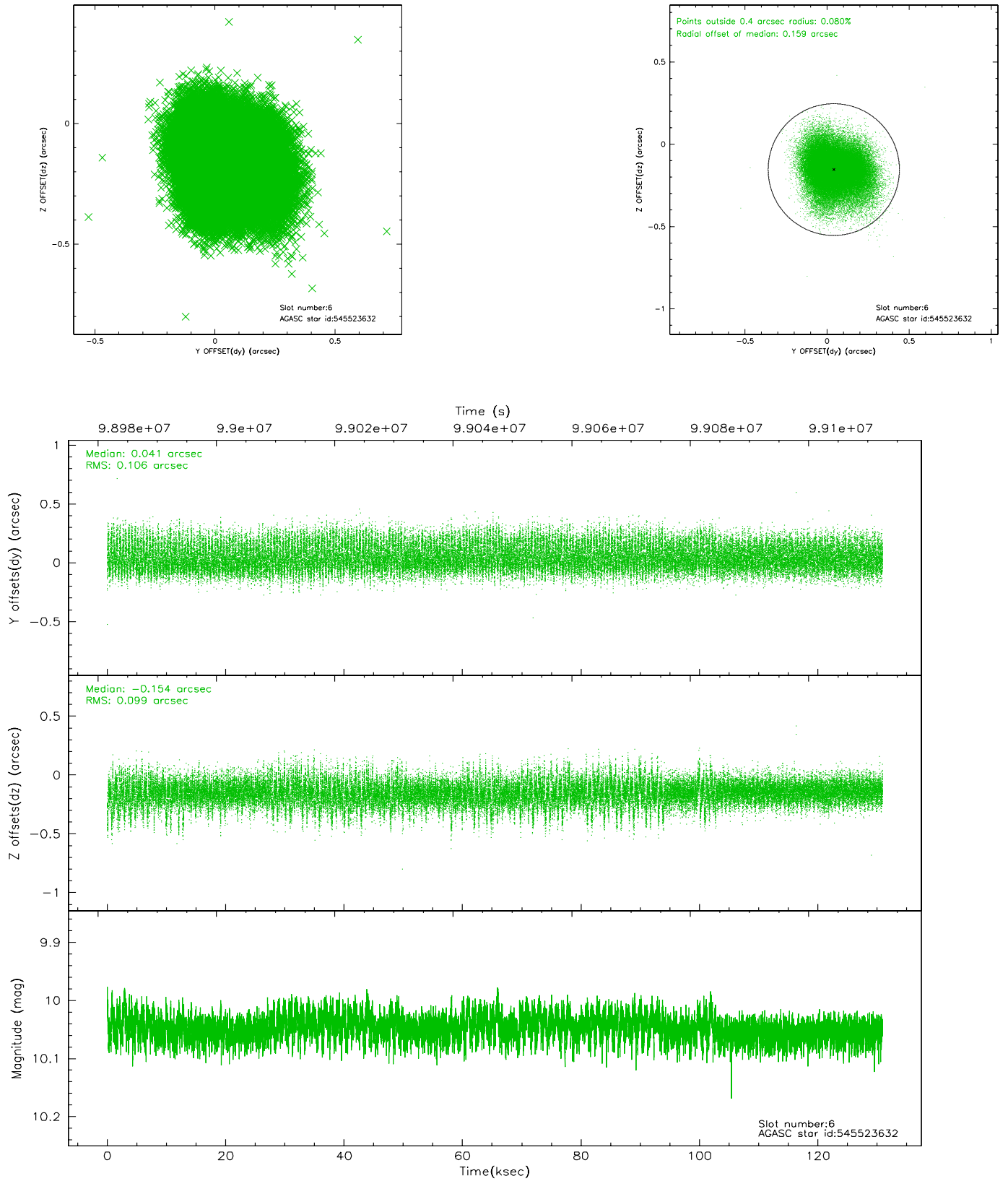
### 2.4.1 Slot 3



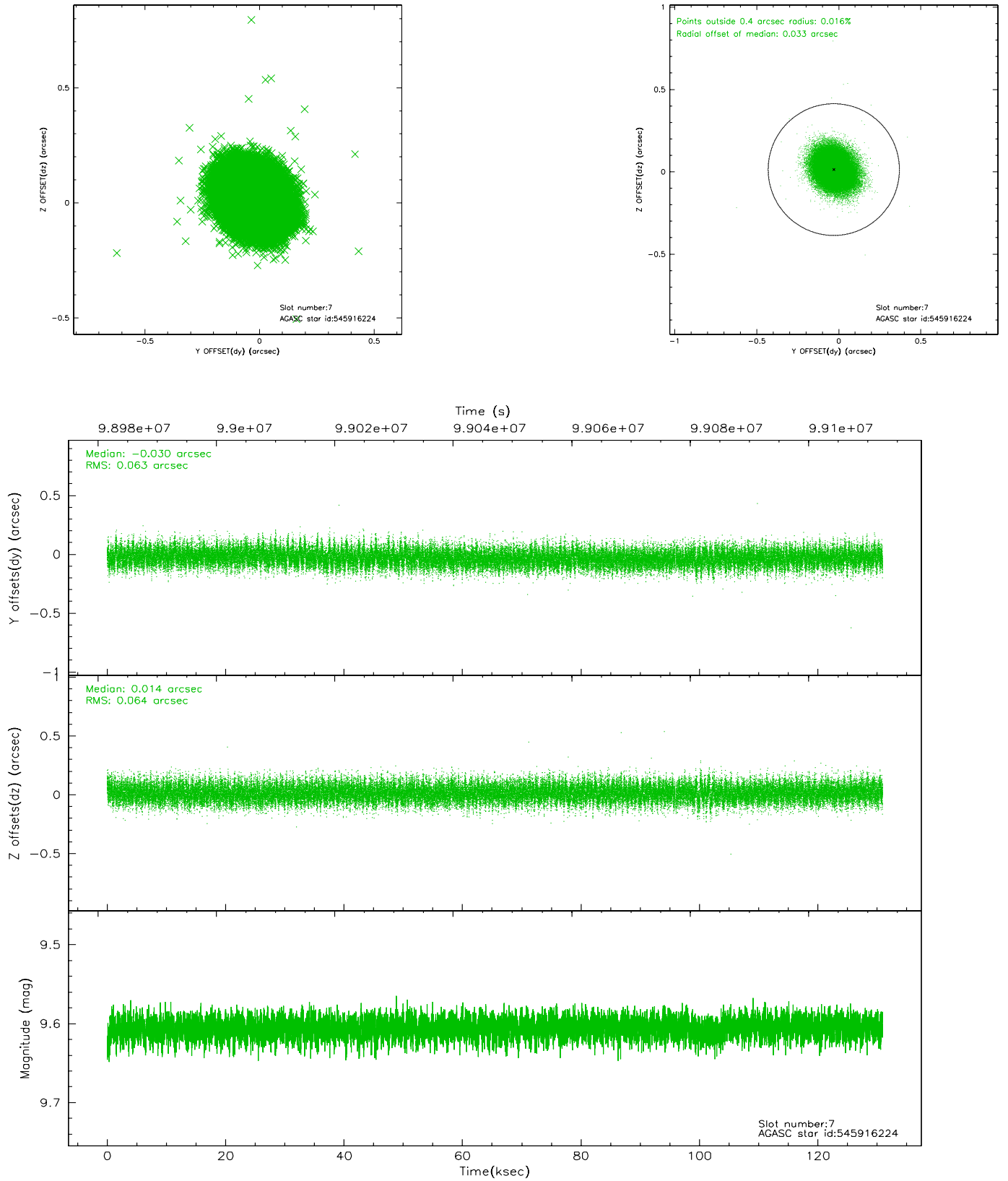
## 2.4.2 Slot 4



### 2.4.3 Slot 6



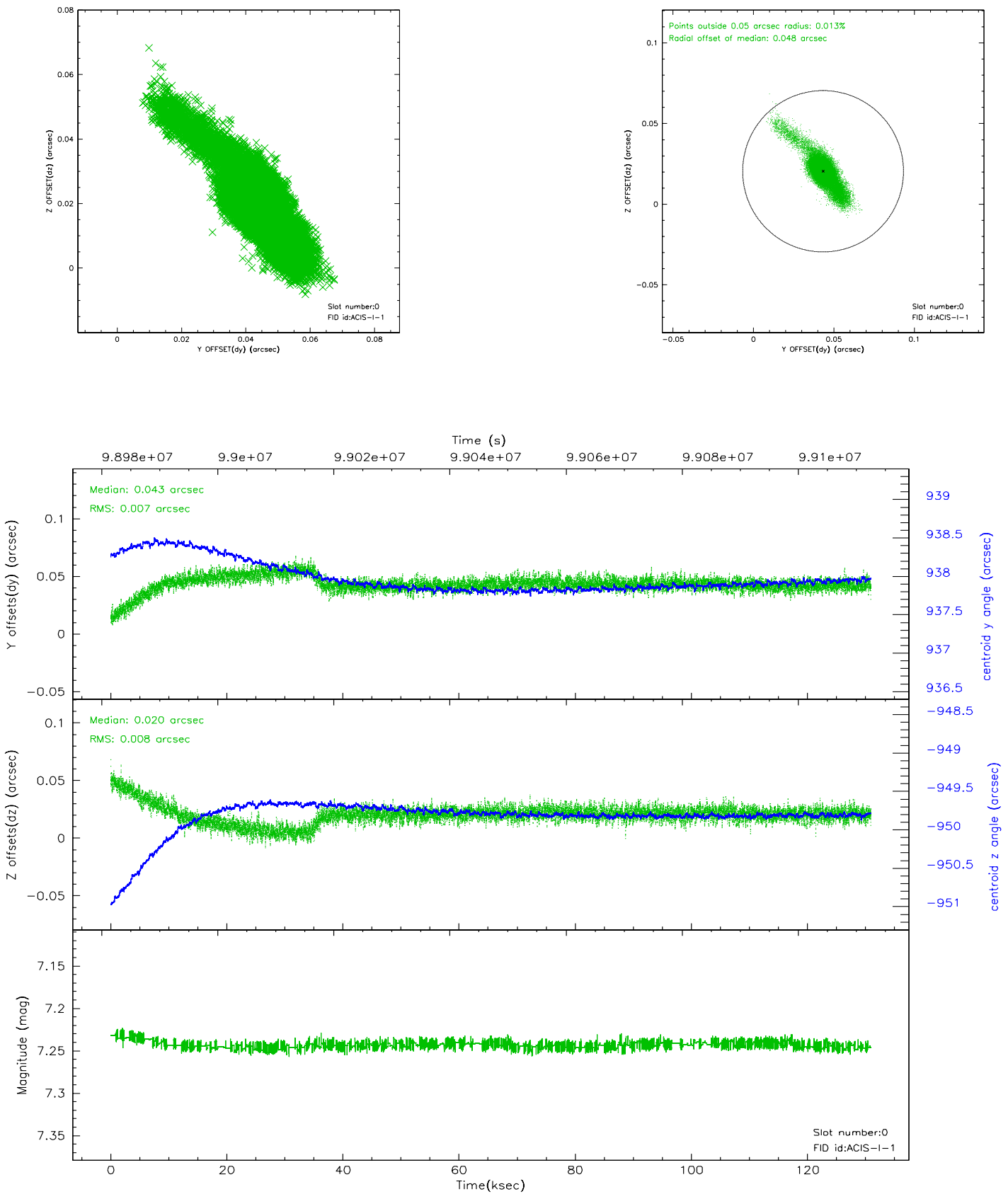
## 2.4.4 Slot 7



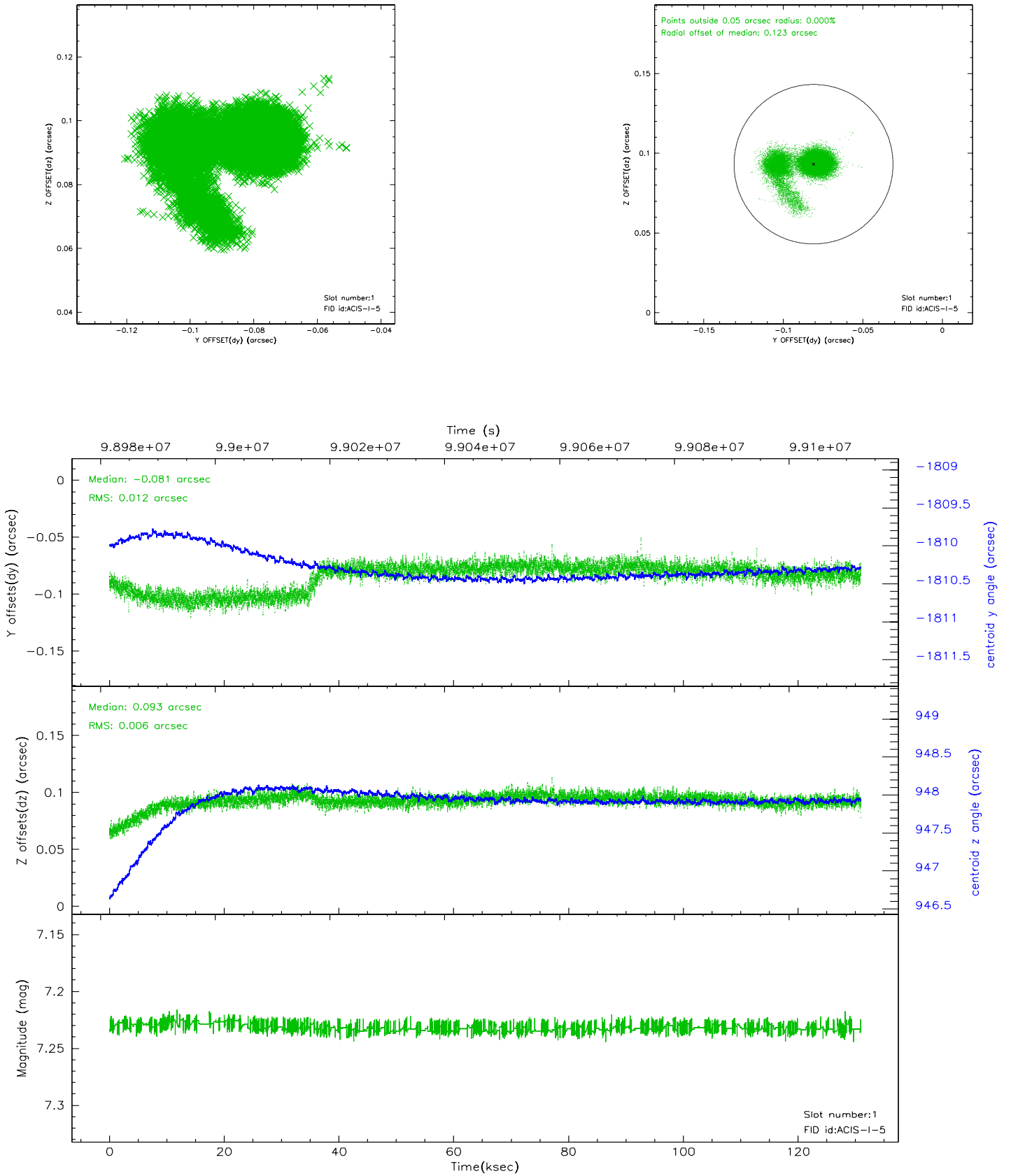


## 2.5 FID Slots

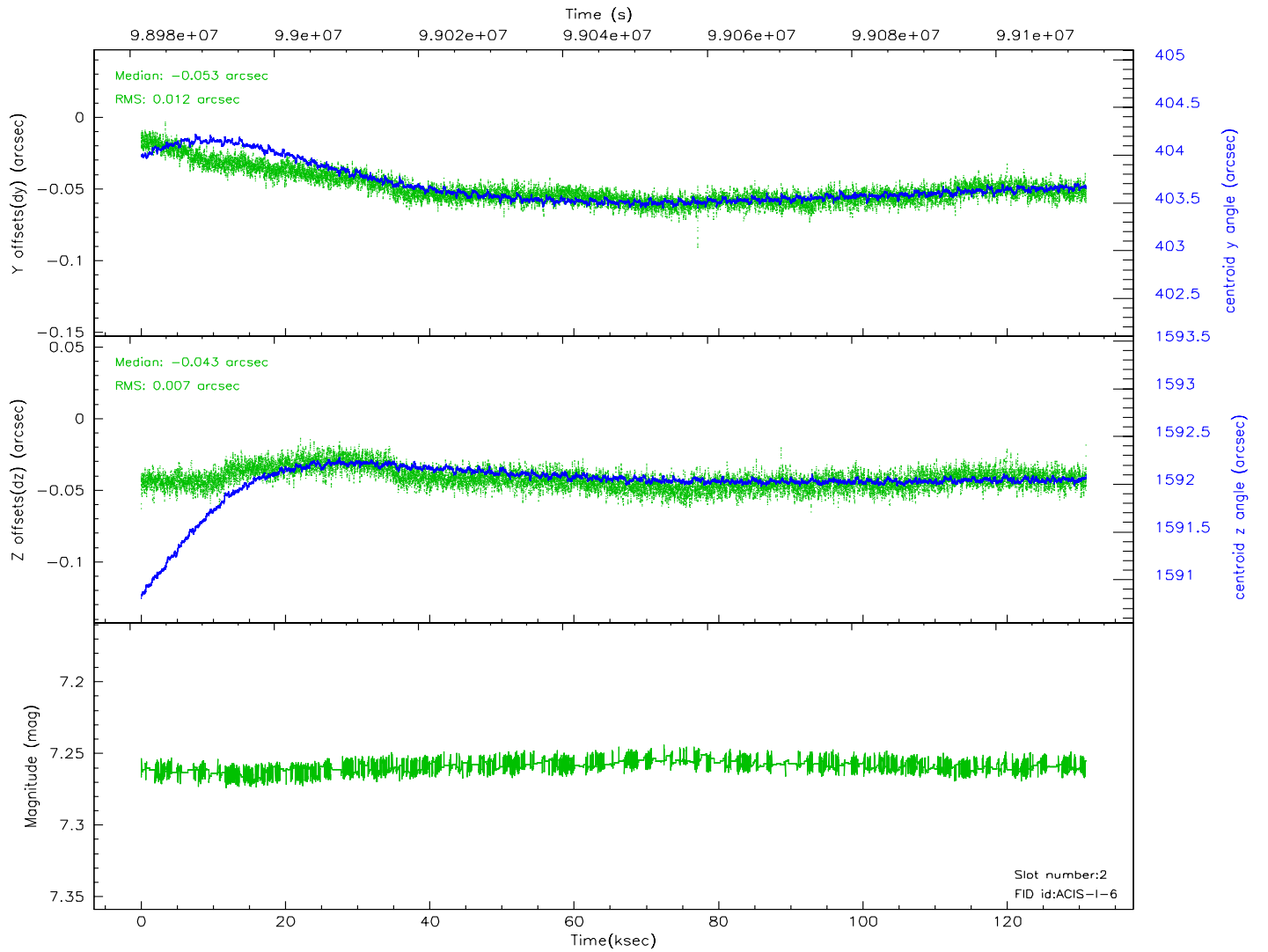
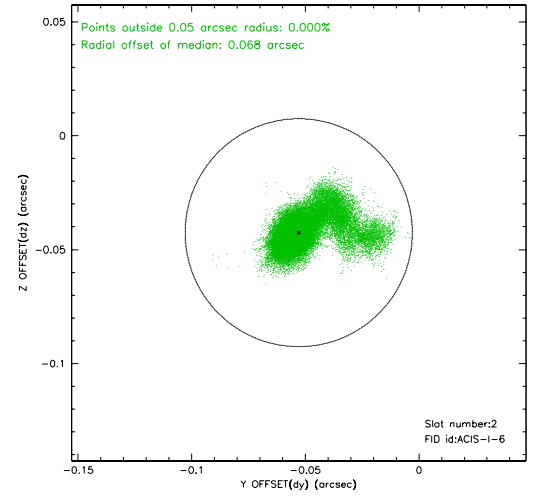
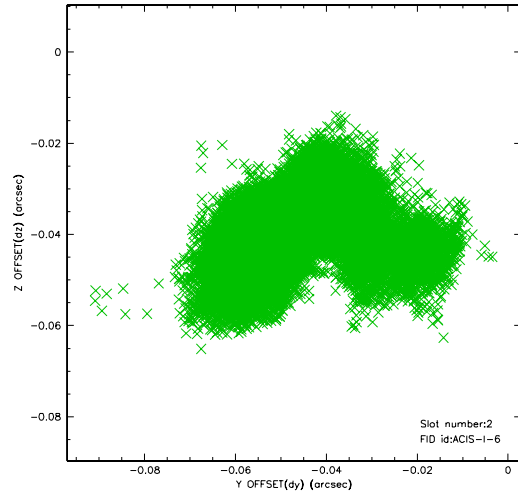
### 2.5.1 Slot 0



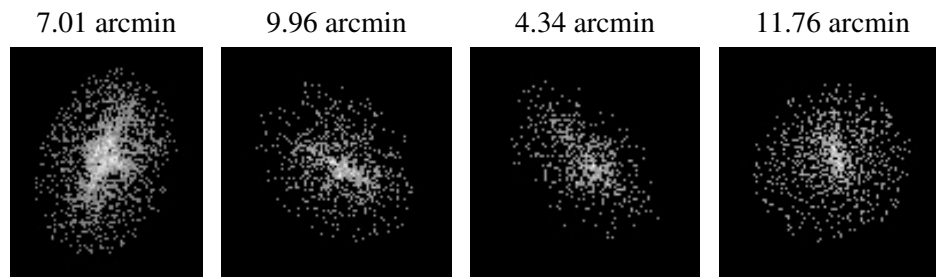
## 2.5.2 Slot 1



### 2.5.3 Slot 2



### 3 Point Sources



# A Summary

## A.1 Status

V&V Scientist	Jen Lauer
V&V Date (YYYY-MM-DD)	2006.11.09
V&V Edition	1
V&V Disposition and Status	OK
V&V Charge Time	130.953

## A.2 Comments

Roll constraint met.

The star in slot 5 was omitted from the aspect solution due to poor data quality. The aspect solution is not expected to be degraded by removing one guide from the solution.