

V&V Reference Report

L2 ASCDS Version : 8.4.5

Observation 1696 - L2 Version 3
Chandra X-Ray Center

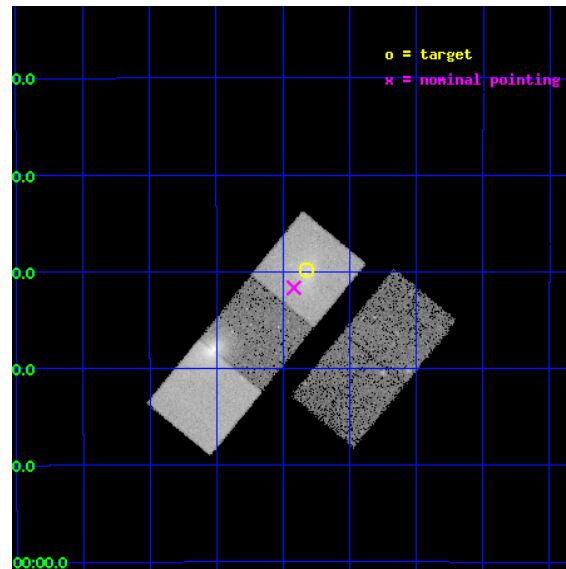
L2 Processing Date : Sep 25 2012

Contents

1	Front	2
2	OBI	3
2.1	OBI	3
2.1.1	Images	3
2.1.2	Bias	3
2.1.3	Parameters	4
2.1.4	Events	4
2.2	Compared Parameters	5
2.3	Aspect	6
2.4	Star Slots	9
2.4.1	Slot 3	9
2.4.2	Slot 4	10
2.4.3	Slot 5	11
2.4.4	Slot 6	12
2.4.5	Slot 7	13
2.5	FID Slots	14
2.5.1	Slot 0	14
2.5.2	Slot 1	15
2.5.3	Slot 2	16
A	Summary	17
A.1	Status	17
A.2	Comments	17

1 Front

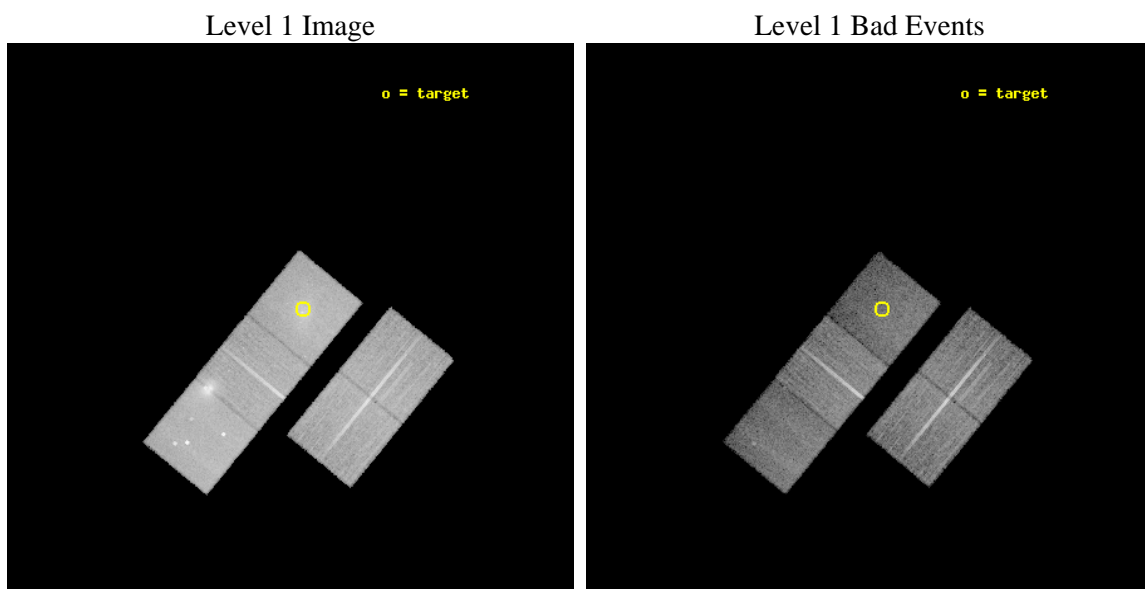
seq_num	900055	Sequence number
obs_id	1696	Observation id
title	DIFFERENTIAL X-RAY GUNN-PETERSON TEST	Proposal title
observer	Dr. Stephen Murray	Principal investigator
object	A2554	Source name
dtcycle	0	
cycle	P	events from which exps? Prim/Second/Both
ra_targ	348.080417	Observer's specified target RA [deg]
dec_targ	-21.497889	Observer's specified target Dec [deg]
ra_nom	348.10441208471	Nominal RA [deg]
dec_nom	-21.527965698731	Nominal Dec [deg]
roll_nom	309.35815584247	Nominal Roll [deg]
revision	3	Processing version of data
ontime	20137.599961281	Sum of GTIs [s]
livetime	19874.487392701	Livetime [s]
ontime2	20137.599961281	Sum of GTIs [s]
ontime3	20137.599961281	Sum of GTIs [s]
ontime5	20137.599961281	Sum of GTIs [s]
ontime6	20137.599961281	Sum of GTIs [s]
ontime7	20137.599961281	Sum of GTIs [s]
l2events	189925	Number of level 2 events



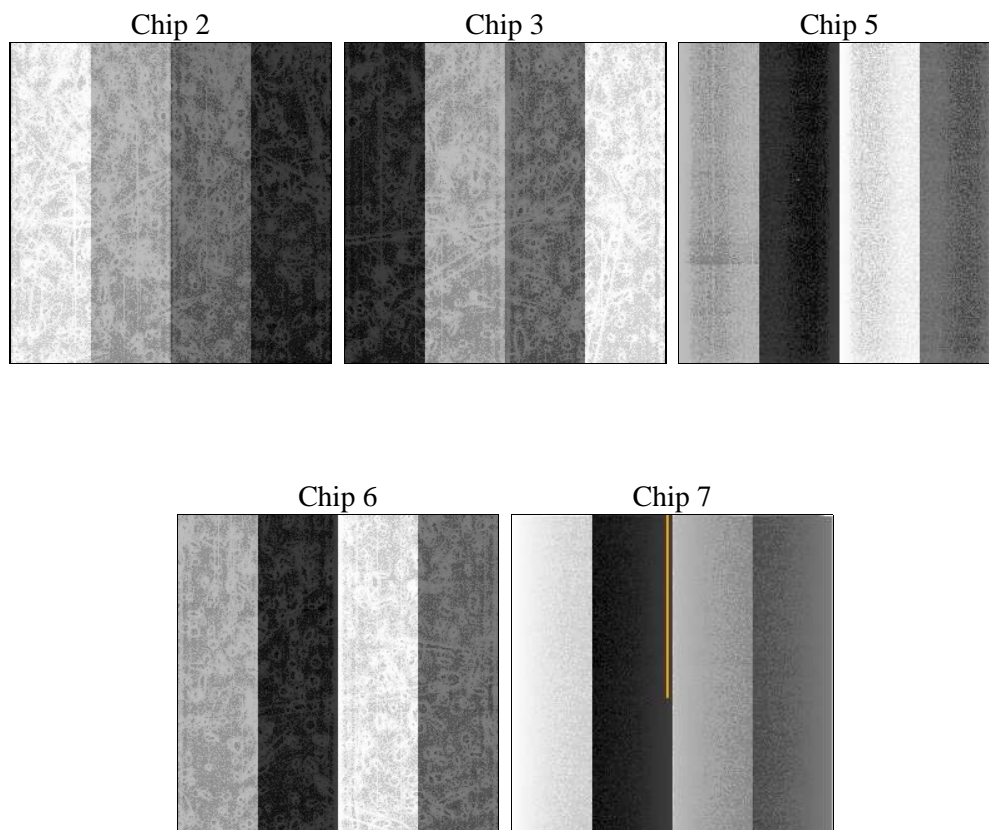
2 OBI

2.1 OBI

2.1.1 Images



2.1.2 Bias



2.1.3 Parameters

obi_num	0	Obi number	sched_exp_time	20000.000000	[s] Scheduled observation exposure time
ascdsver	8.4.5	Processing system revision	ontime	20137.599961281	Sum of GTIs [s]
caldsver	4.5.1.1	 	ontime2	20137.599961281	Sum of GTIs [s]
date	2012-09-26T00:22:56	Date and time of file creation	ontime3	20137.599961281	Sum of GTIs [s]
revision	3	Processing version of data	ontime5	20137.599961281	Sum of GTIs [s]
			ontime6	20137.599961281	Sum of GTIs [s]
			ontime7	20137.599961281	Sum of GTIs [s]
			l1events	668994	Number of level 1 events

2.1.4 Events

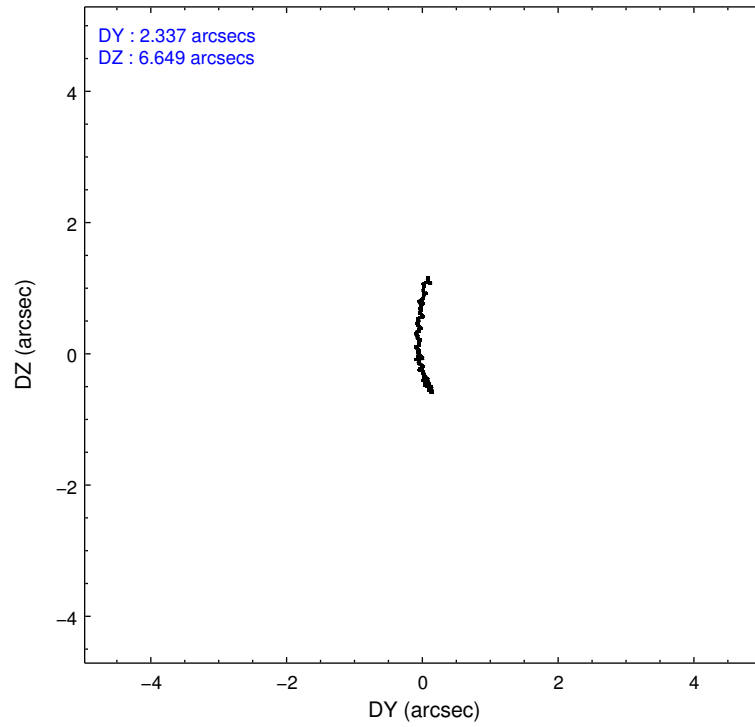
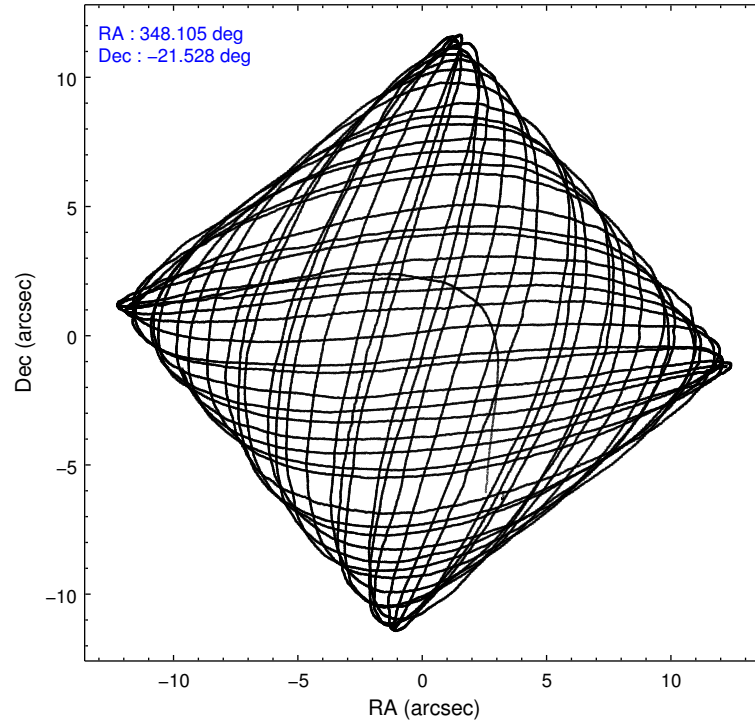
	ccd 2	ccd 3	ccd 5	ccd 6	ccd 7
level 1 events	121654	115839	161262	133063	137176
rejected events	109168	105068	74415	108304	64693
rejected %	89%	90%	46%	81%	47%

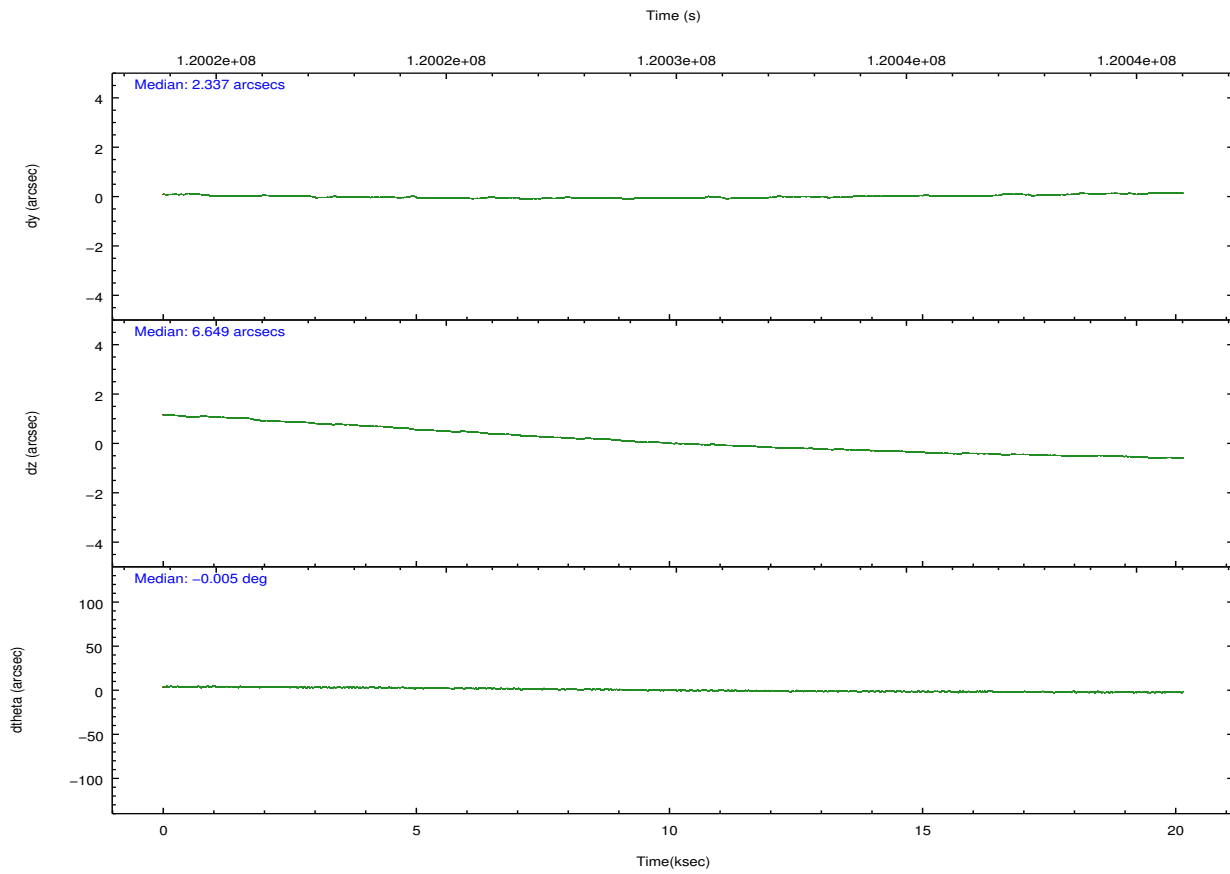
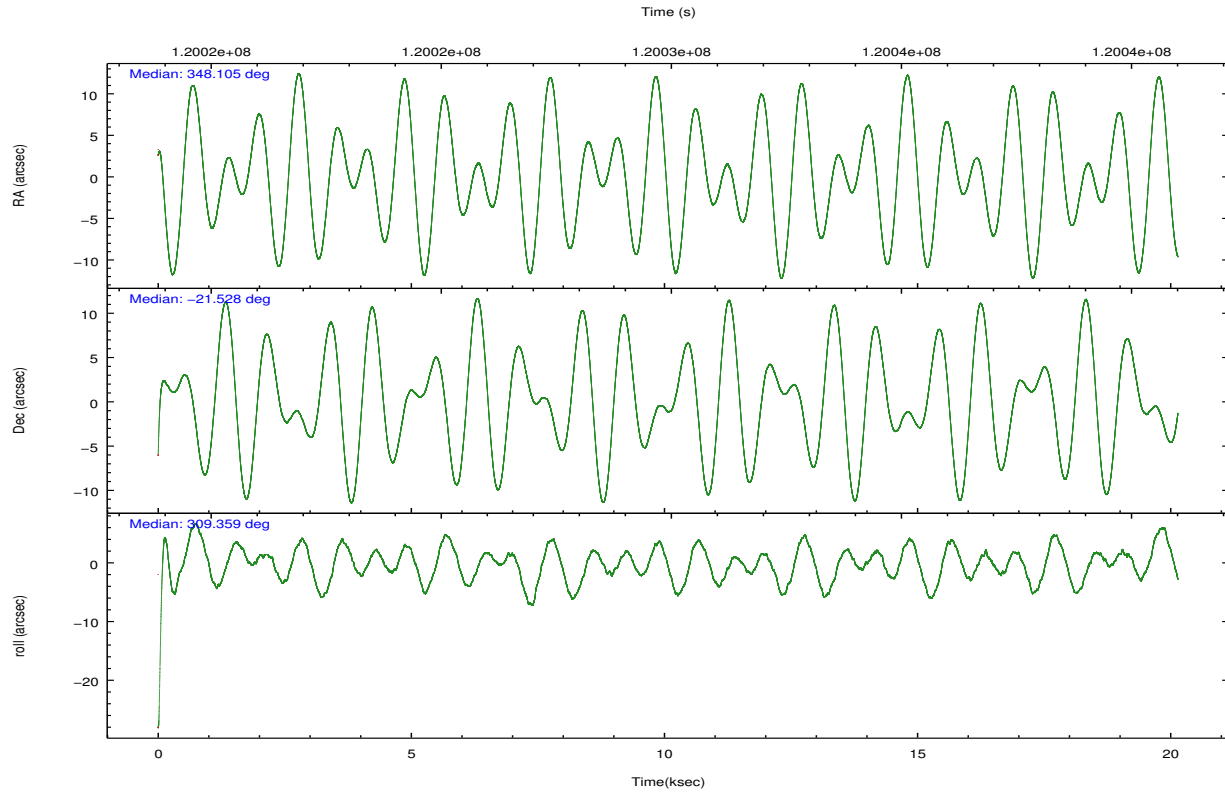
	ccd 2	ccd 3	ccd 5	ccd 6	ccd 7
grade 0 events	5396	4254	16330	15484	11242
	4%	3%	10%	11%	8%
grade 1 events	66	37	201	72	111
	0%	0%	0%	0%	0%
grade 2 events	2768	2161	24337	3776	16016
	2%	1%	15%	2%	11%
grade 3 events	1103	1247	4936	1608	7493
	0%	1%	3%	1%	5%
grade 4 events	1323	1171	4870	1603	7370
	1%	1%	3%	1%	5%
grade 5 events	3223	3892	12056	4025	12567
	2%	3%	7%	3%	9%
grade 6 events	2060	2111	37526	2607	31268
	1%	1%	23%	1%	22%
grade 7 events	105715	100966	61006	103888	51109
	86%	87%	37%	78%	37%

2.2 Compared Parameters

Parameter	Planned	Actual	Parameter	Planned	Actual
Instrument	ACIS	ACIS	Obspar format version number	7	7
Detector	ACIS-23567	ACIS-23567	Obspar file type	PREDICTED	ACTUAL
Grating	NONE	NONE	Obspar update status	NONE	UPDATED
Data mode	VFAINT	VFAINT	Number of optional ACIS chips dropped	0	0
Observation mode	POINTING	POINTING	On-chip summing requested	N	N
[deg] Pointing RA	348.076871	348.1044120847119	Subarray requested	NONE	NONE
[deg] Pointing Dec	-21.518642	-21.52796569873129	Alternating exposures requested	N	N
[deg] Pointing Roll	309.191448	309.3581558424666	[s] Primary exposure time	0.000000	3.1
[mm] SIM focus pos	-0.684267	-0.6828225247311905			
[mm] SIM defocus	0	0.001444936568705701			
[mm] SIM translation stage pos	-190.132523	-190.1425803651734			
[mm] SIM translation stage offset	0	0.01005778216563158			
[s] Observation start time (MET)	120019999.184000	120018866.07614			
Observation start date	2001-10-21T02:52:15	2001-10-21T02:34:26			
[s] Observation end time (MET)	120039999.184000	120040857.96451			
Observation end date	2001-10-21T08:25:35	2001-10-21T08:40:57			
Read mode	TIMED	TIMED			

2.3 Aspect



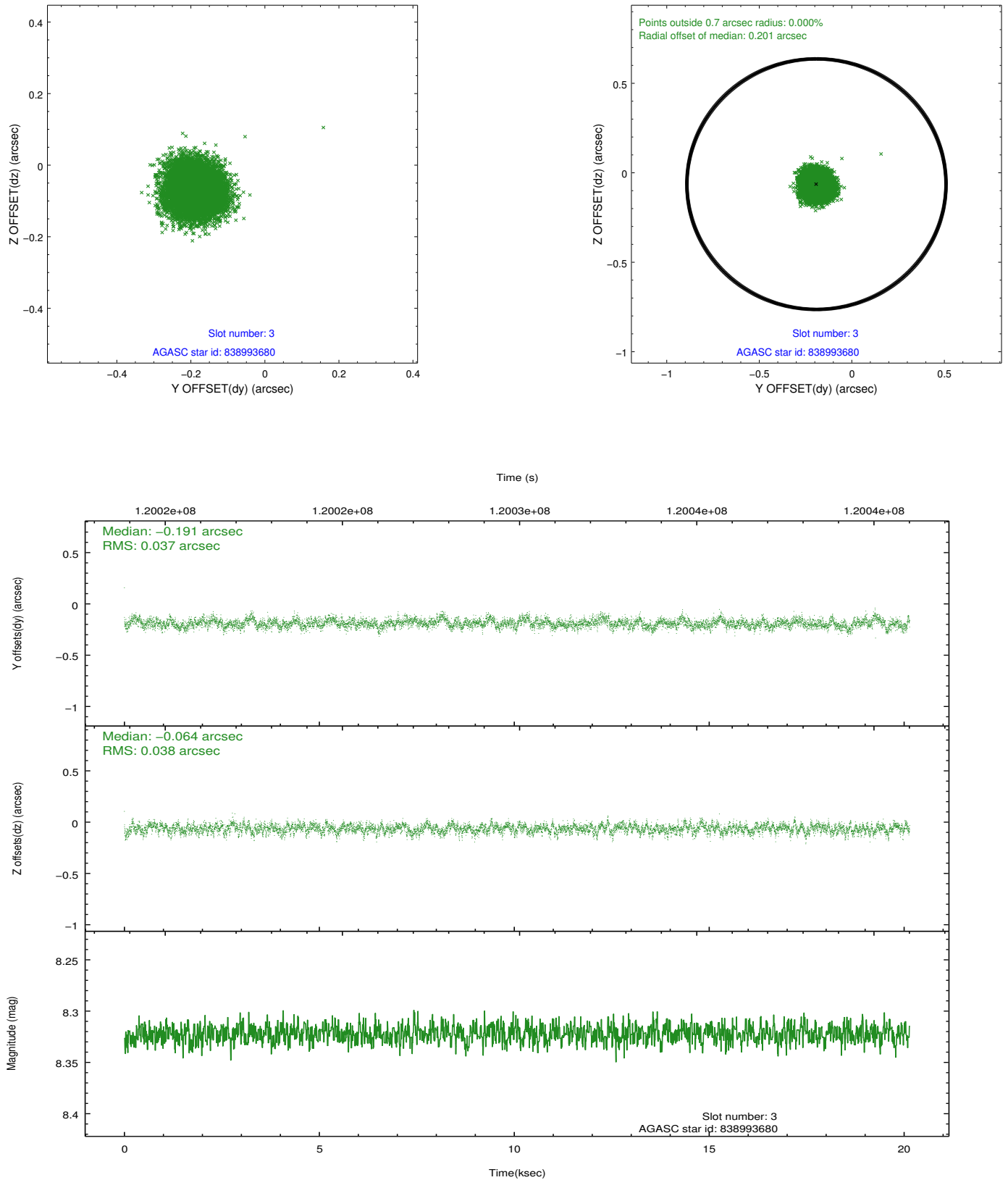


Slot Statistics

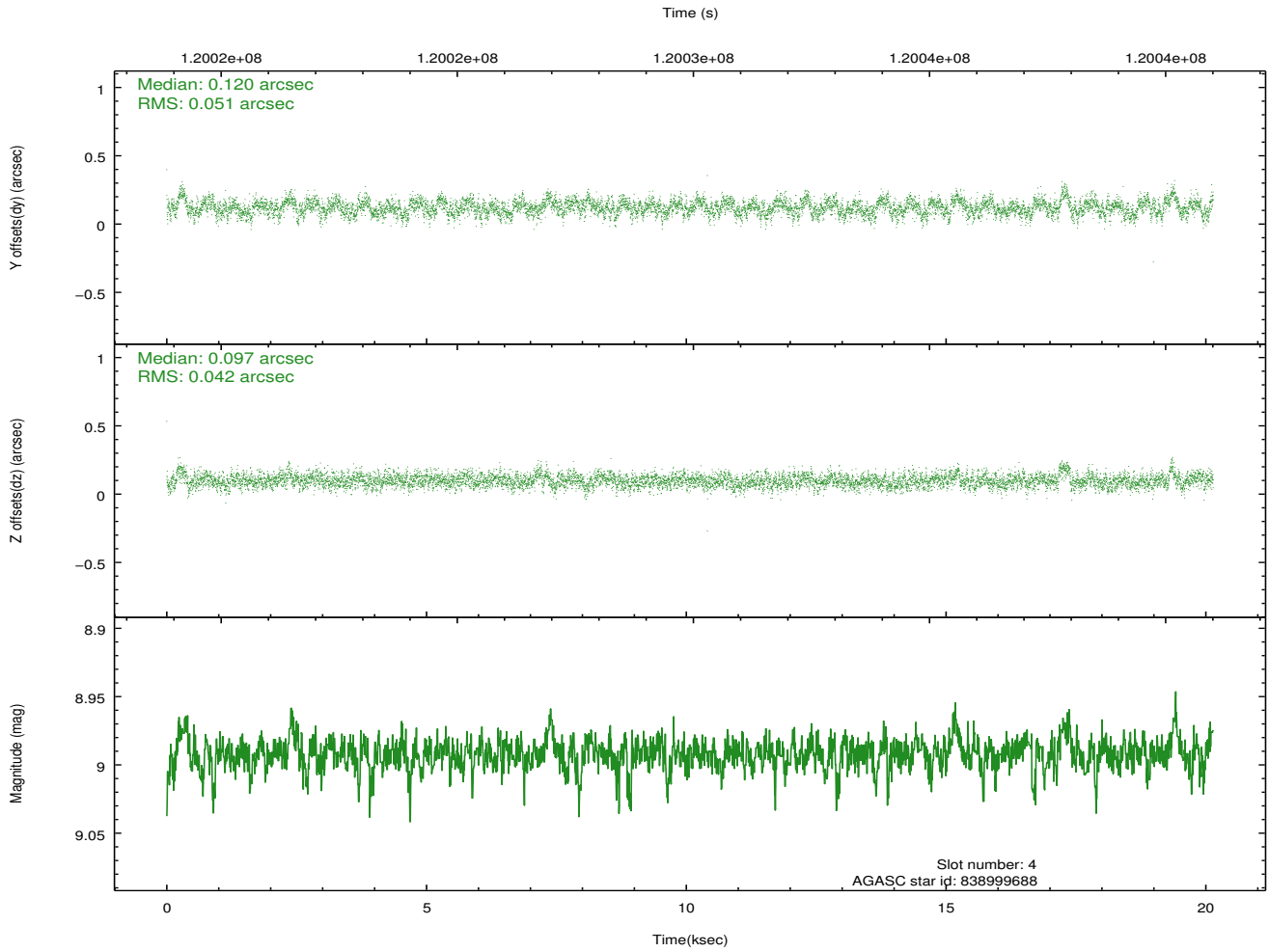
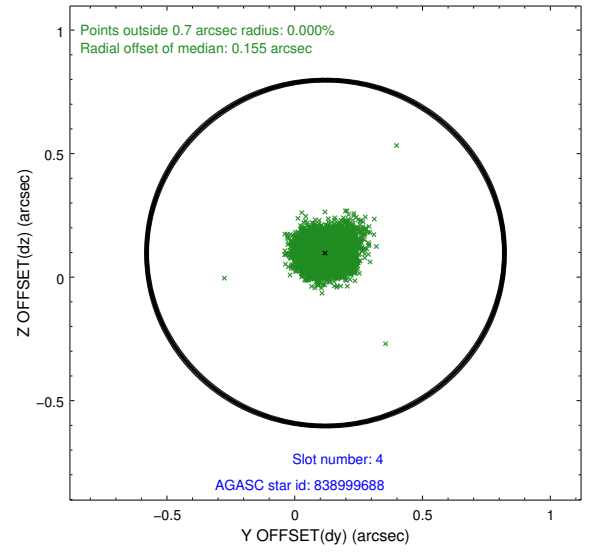
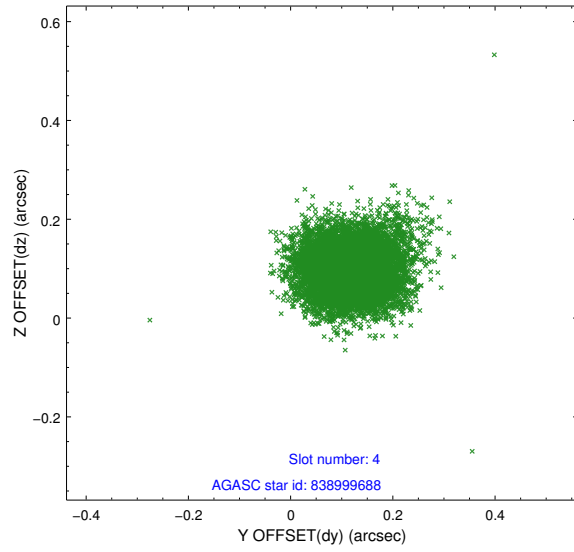
slot	status	id	mag	n_pts	med_dy	med_dz	dr1	dr2	ra	dec	mean_y	mean_z
0	FID	ACIS-S-2	7.12	4914	-0.033	-0.002	0.014	0.026	0.000000	0.000000	-754.98	-1727.89
1	FID	ACIS-S-4	7.20	4912	-0.033	0.016	0.010	0.017	0.000000	0.000000	2158.19	180.45
2	FID	ACIS-S-5	7.24	4914	0.032	-0.006	0.012	0.024	0.000000	0.000000	-1807.54	174.27
3	GUIDE	838993680	8.32	9819	-0.191	-0.064	0.056	0.093	347.714354	-21.018125	-2166.01	193.23
4	GUIDE	838999688	8.99	9822	0.120	0.097	0.069	0.116	348.661324	-21.596245	1454.91	1337.21
5	GUIDE	838994000	9.04	9821	-0.144	0.060	0.071	0.114	347.900576	-21.003041	-1813.31	713.50
6	GUIDE	839000400	9.74	9820	-0.034	-0.181	0.119	0.201	347.952883	-22.218103	1689.78	-1912.03
7	GUIDE	839001560	10.77	9815	0.247	0.087	0.205	0.332	348.398612	-21.961978	1916.44	-177.10

2.4 Star Slots

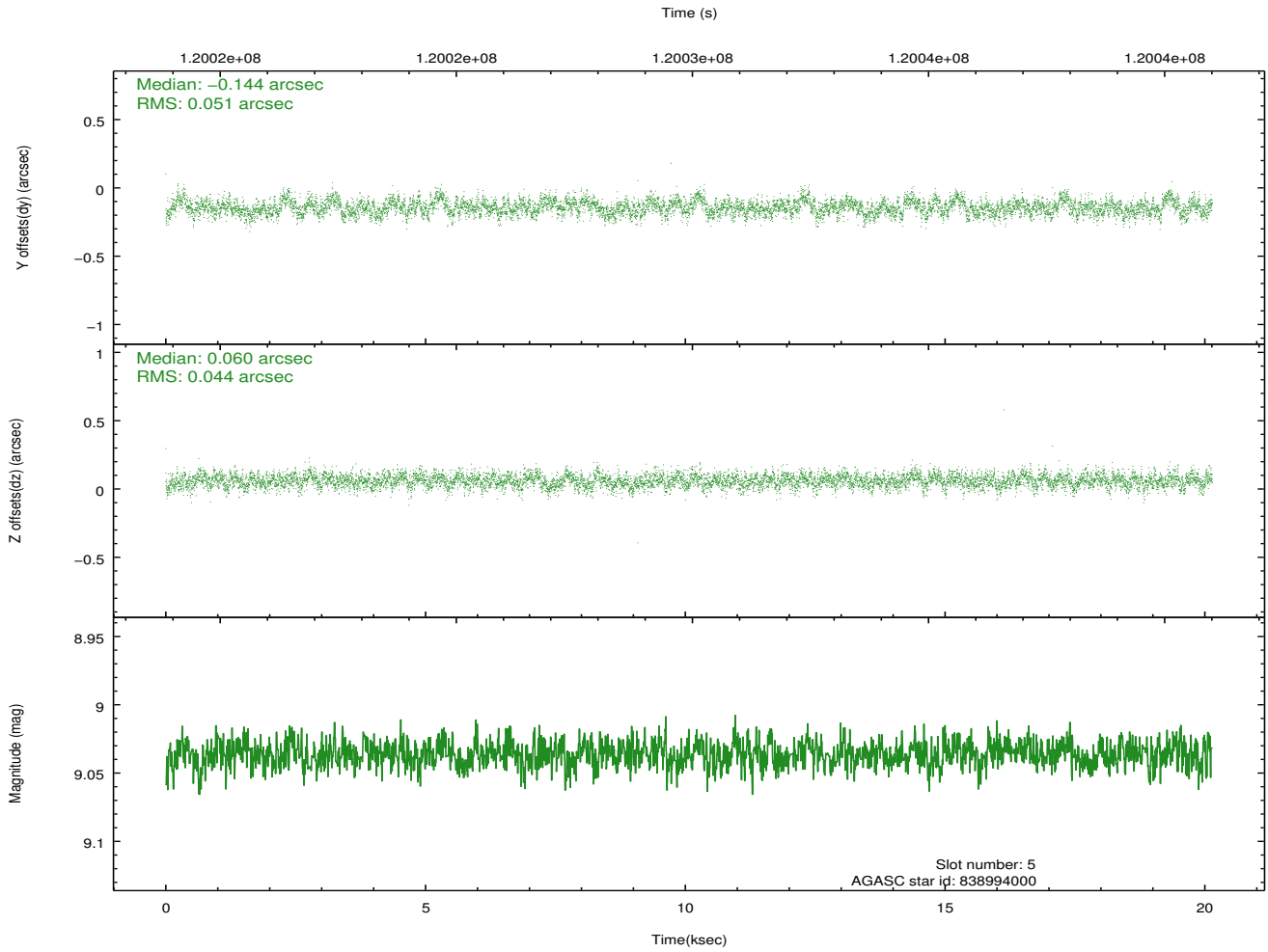
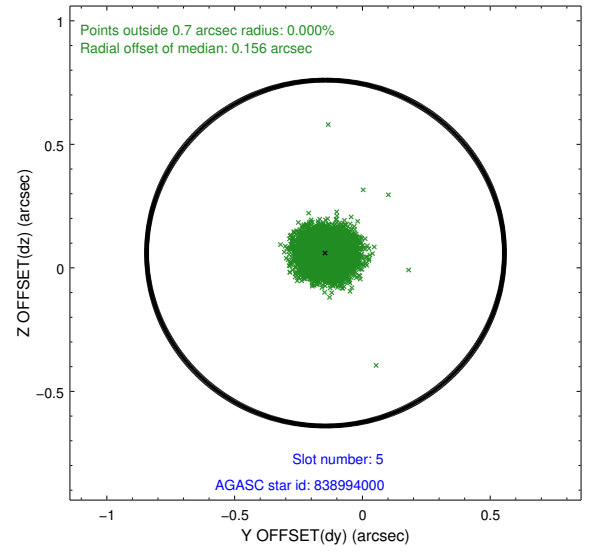
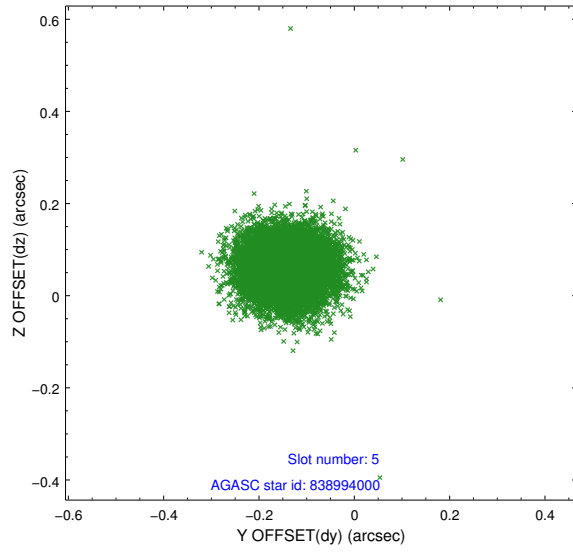
2.4.1 Slot 3



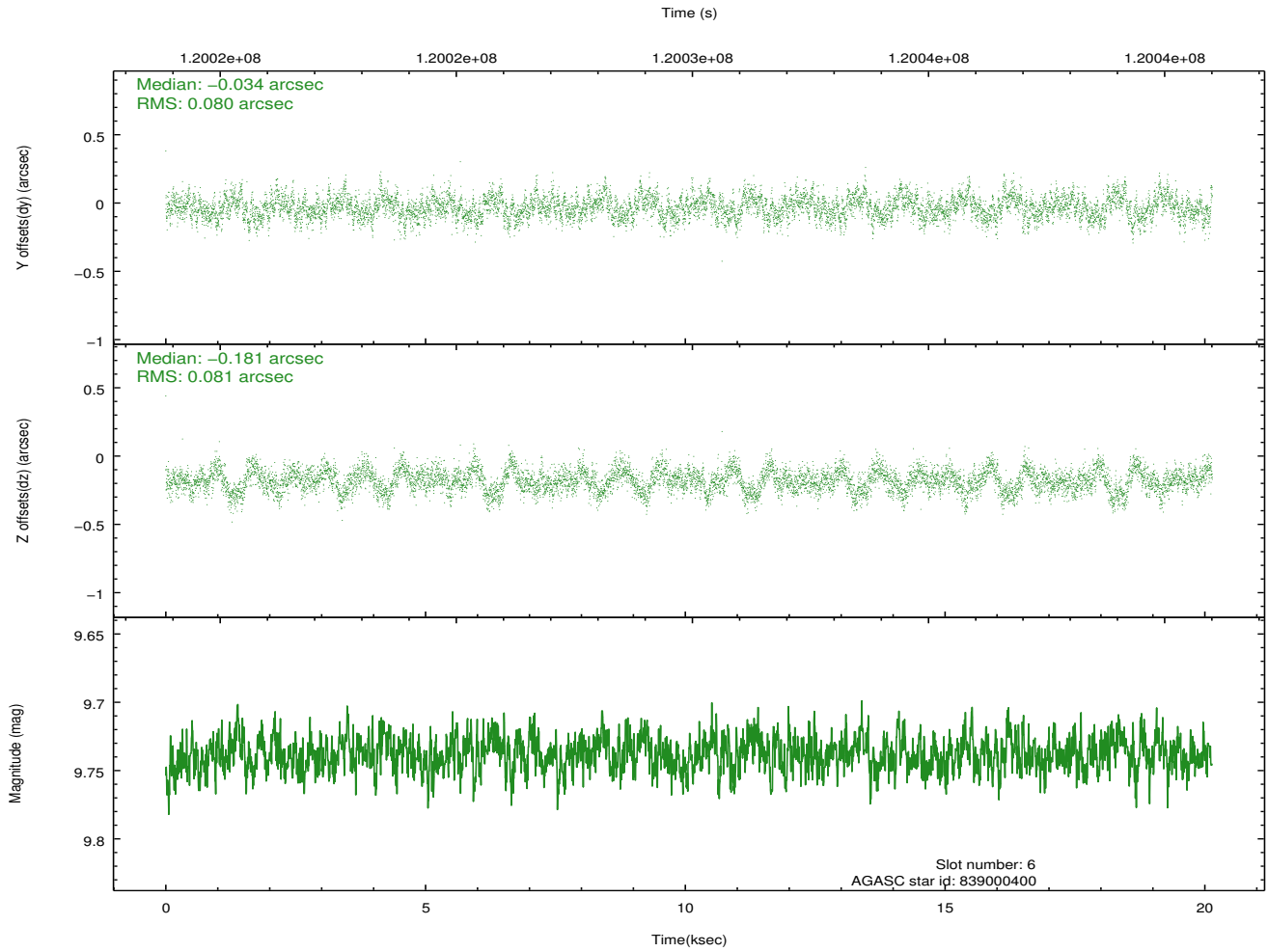
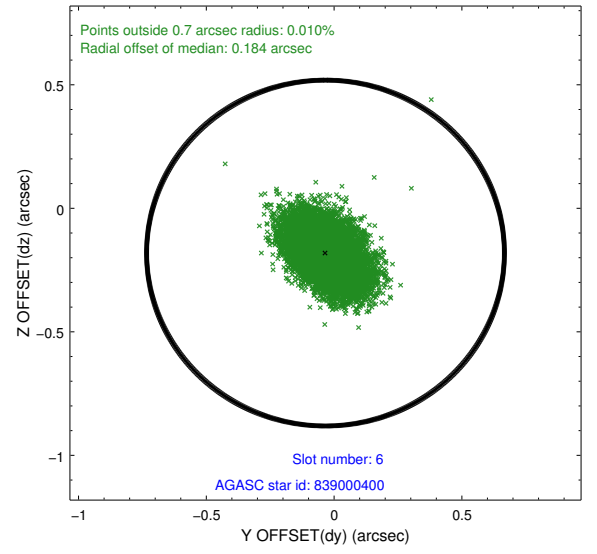
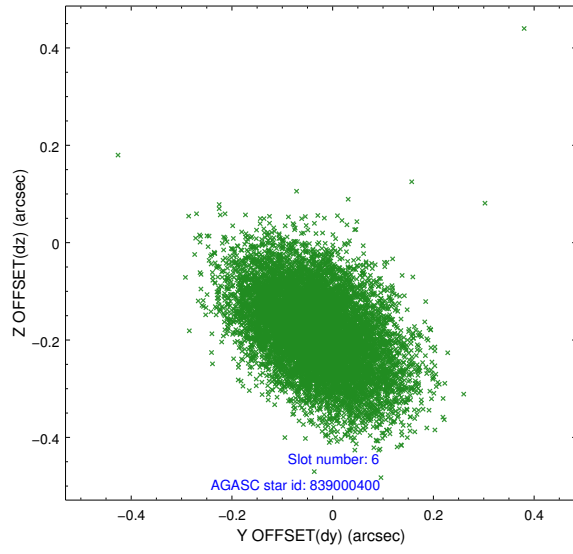
2.4.2 Slot 4



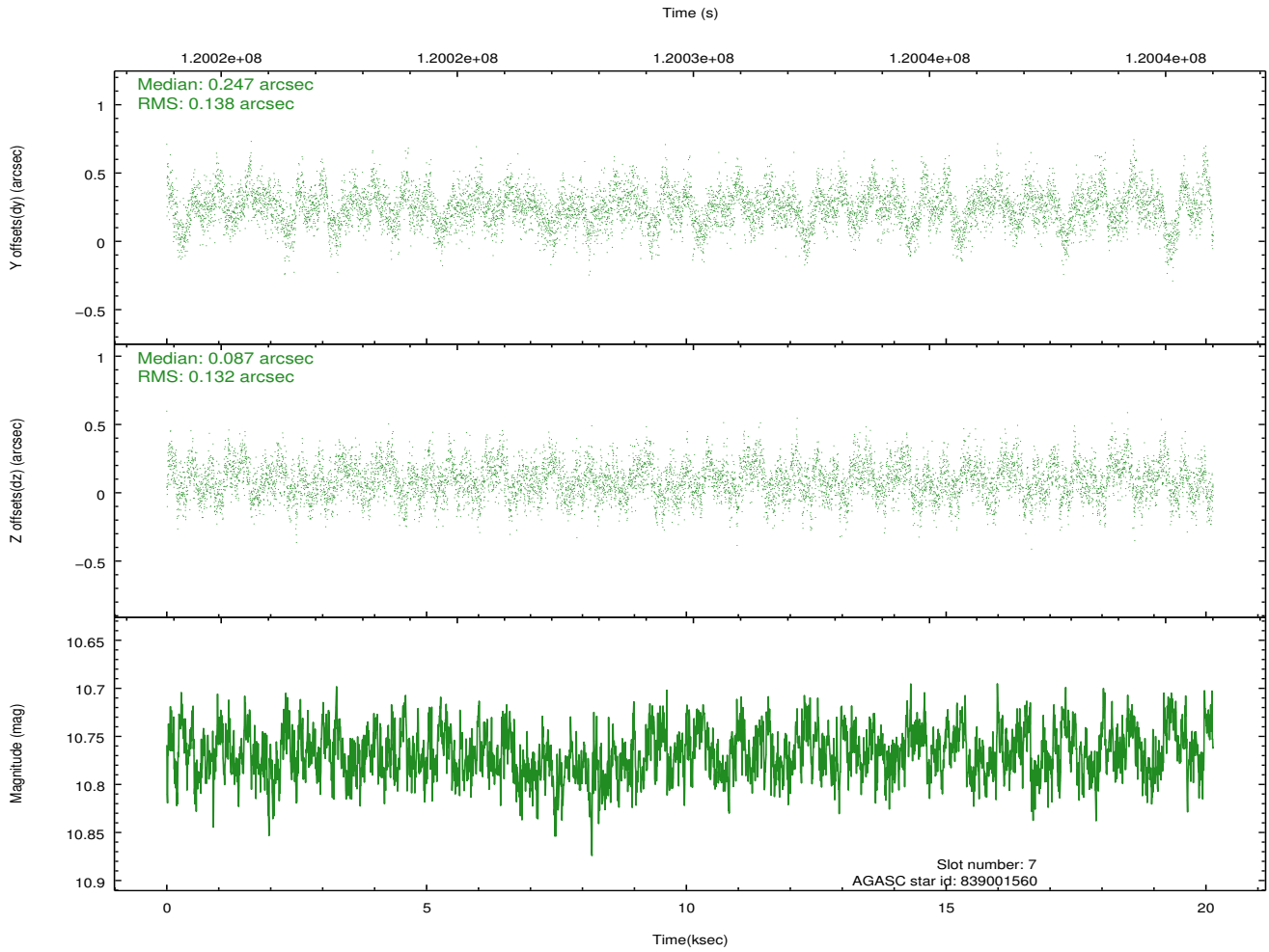
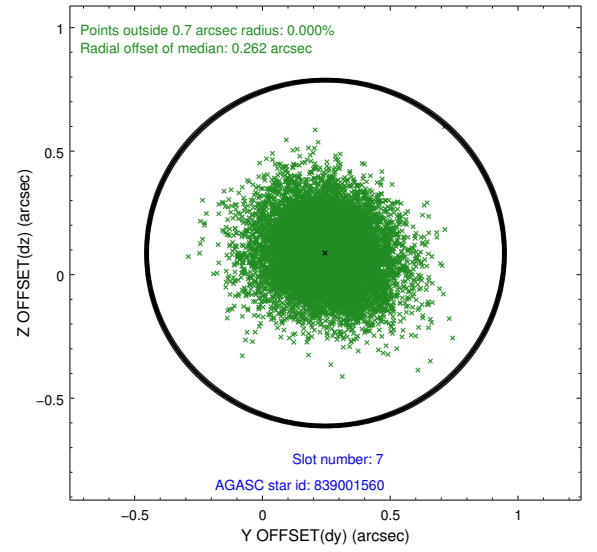
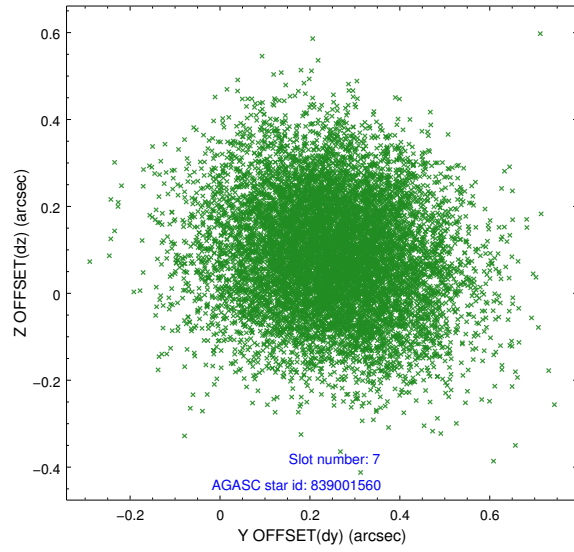
2.4.3 Slot 5



2.4.4 Slot 6

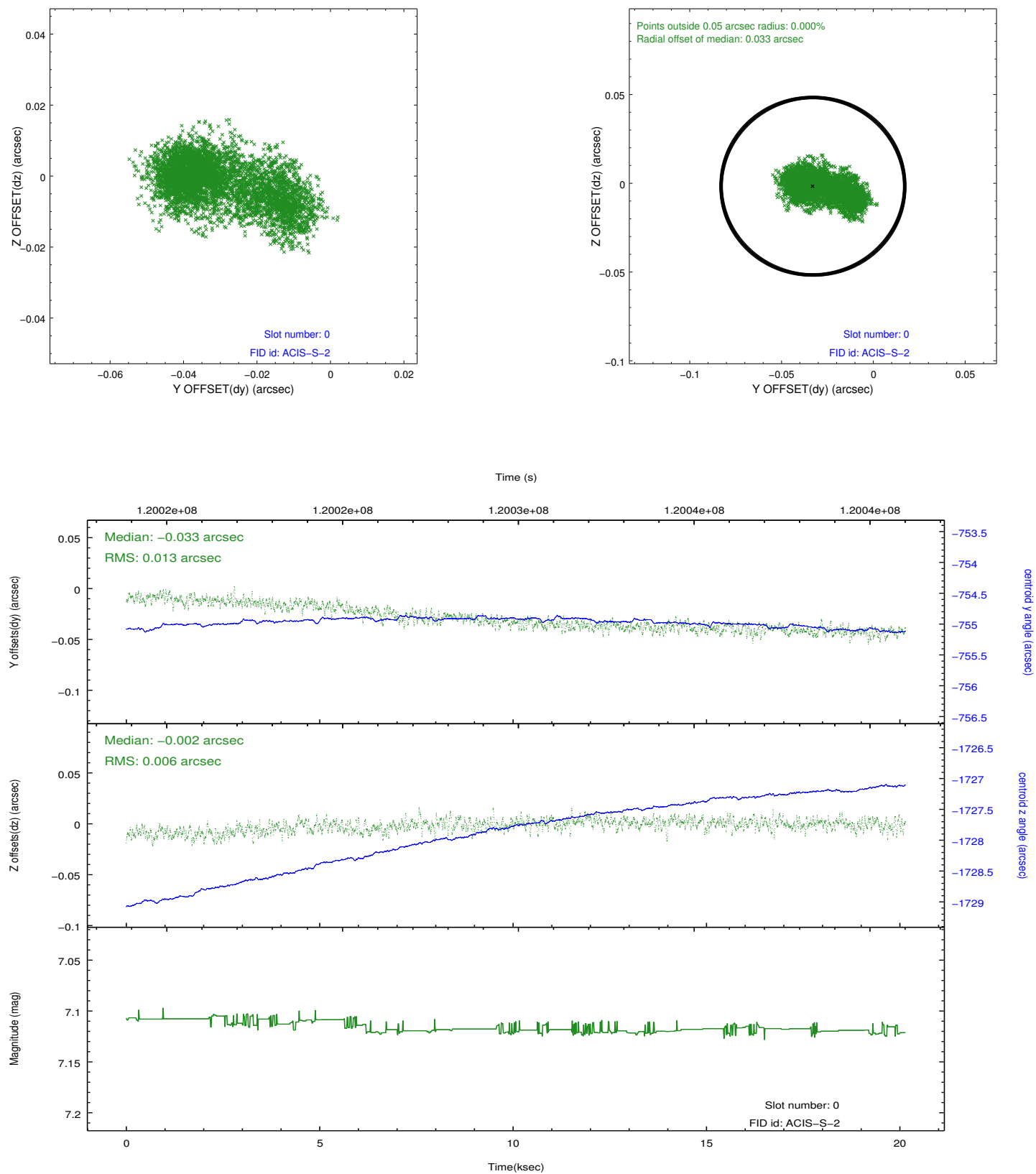


2.4.5 Slot 7

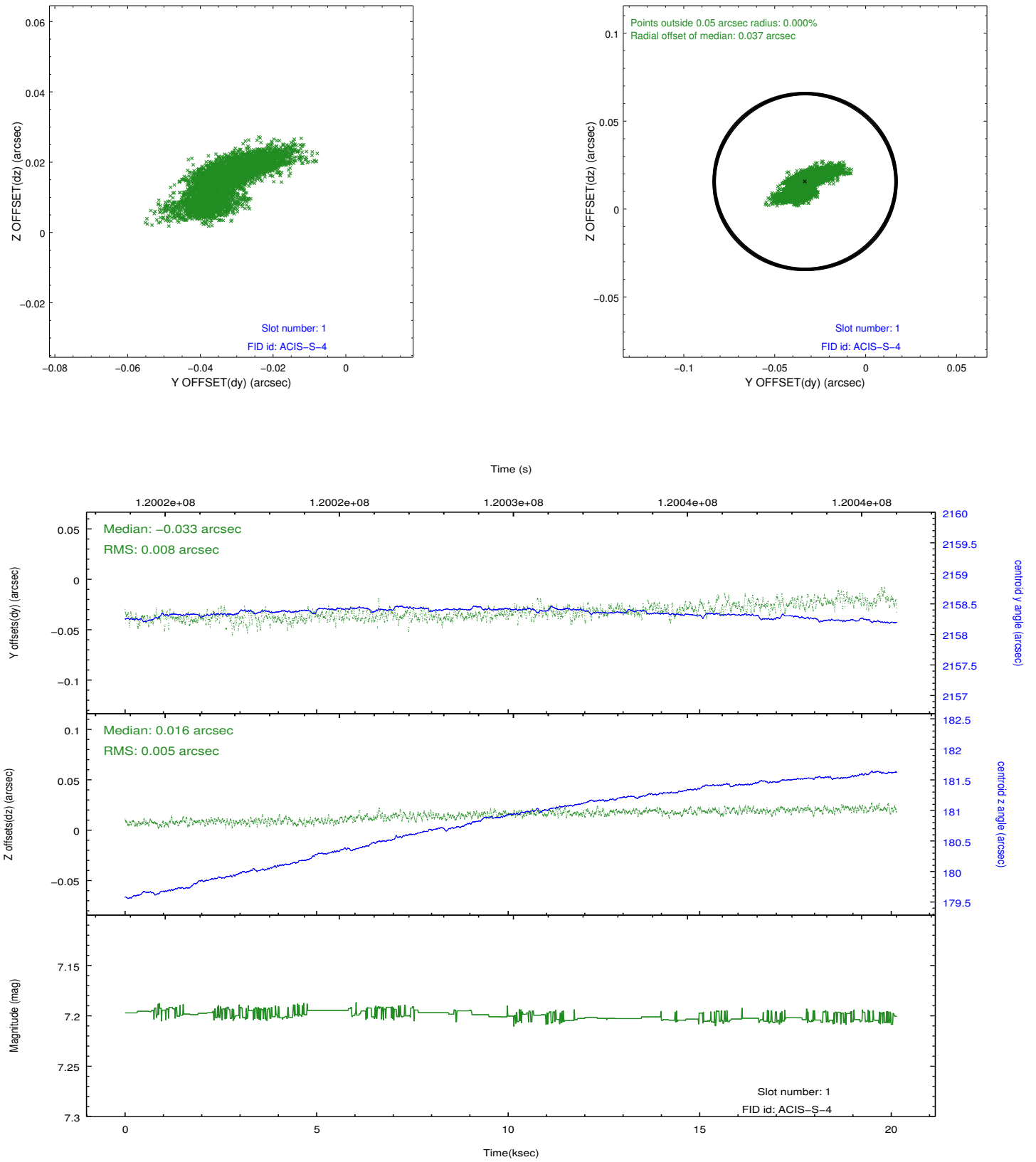


2.5 FID Slots

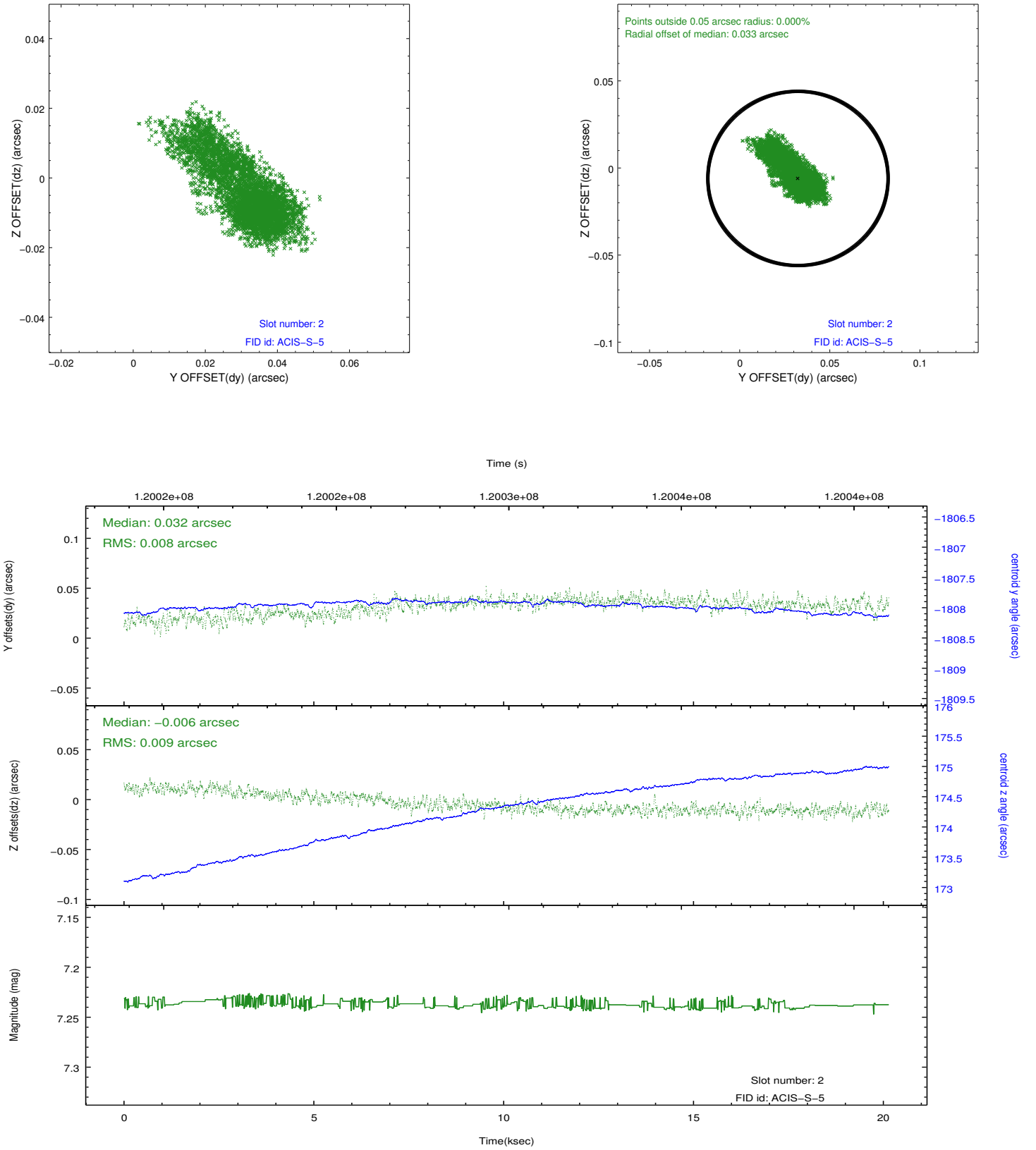
2.5.1 Slot 0



2.5.2 Slot 1



2.5.3 Slot 2



A Summary

A.1 Status

V&V Scientist	Jen Lauer
V&V Date (YYYY-MM-DD)	2012.09.27
V&V Edition	1
V&V Disposition and Status	OK
V&V Charge Time	20.137

A.2 Comments

During observation, gyro bias values were elevated; no apparent impact on data.