

V&V Reference Report

L2 ASCDS Version : 7.6.9

Observation 1693 - L2 Version 001
Chandra X-Ray Center

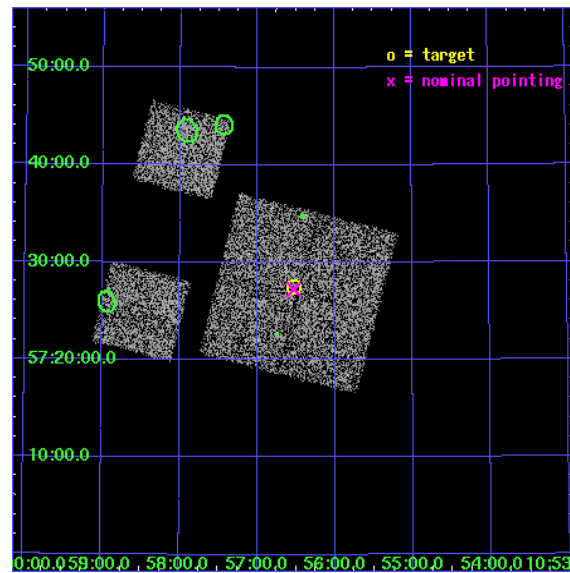
L2 Processing Date : Dec 11 2006

Contents

1	Front	2
2	OBI	3
2.1	OBI	3
2.1.1	Images	3
2.1.2	Bias	3
2.1.3	Parameters	4
2.1.4	Events	4
2.2	Compared Parameters	5
2.3	Aspect	6
2.4	Star Slots	9
2.4.1	Slot 3	9
2.4.2	Slot 4	10
2.4.3	Slot 5	11
2.4.4	Slot 6	12
2.4.5	Slot 7	13
2.5	FID Slots	14
2.5.1	Slot 0	14
2.5.2	Slot 1	15
2.5.3	Slot 2	16
3	Point Sources	17
A	Summary	18
A.1	Status	18
A.2	Comments	18

1 Front

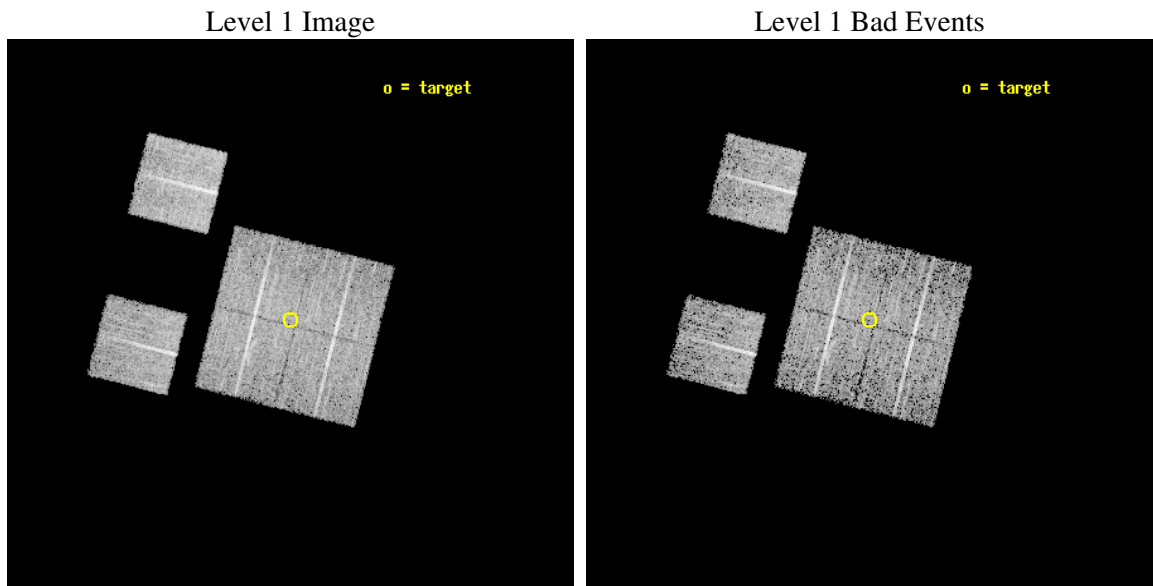
seq_num	900052
obs_id	1693
title	LOCKMAN HOLE SHALLOW SURVEY
observer	Dr. Stephen Murray
object	LOCKMAN HOLE #13
dtcycle	0
cycle	P
ra_targ	164.133333
dec_targ	57.458889
ra_nom	164.13203082399
dec_nom	57.45410290155
roll_nom	284.25781694352
revision	2
ontime	5756.8000053614
livetime	5683.9039373647
ontime0	5756.8000053614
ontime1	5756.8000053614
ontime2	5756.8000053614
ontime3	5756.8000053614
ontime6	5756.8000053614
ontime8	5756.8000053614
l2events	23014



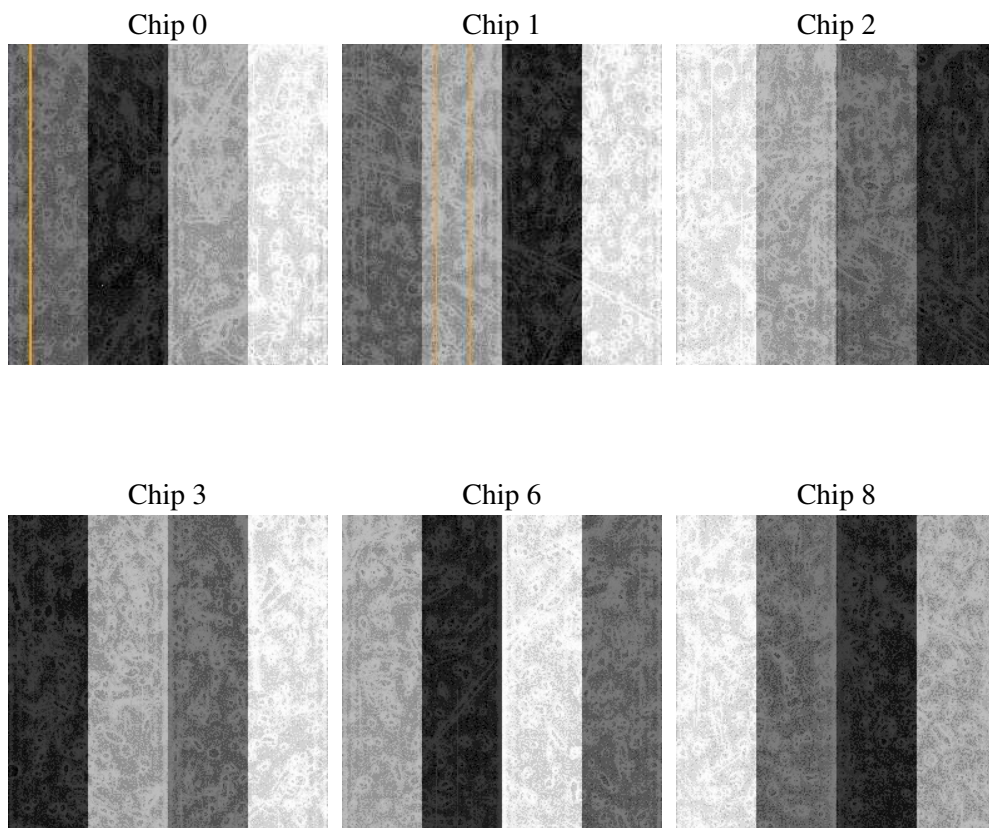
2 OBI

2.1 OBI

2.1.1 Images



2.1.2 Bias



2.1.3 Parameters

obi_num	0
ascdsver	7.6.9
caldsver	3.2.4
date	2006-12-11T19:22:46
revision	2

sched_exp_time	6000.000000
ontime	5762.4926452041
ontime0	5762.4926452041
ontime1	5762.4926452041
ontime2	5762.4926452041
ontime3	5762.4926452041
ontime6	5762.4926452041
ontime8	5762.4926452041
l1events	232168

2.1.4 Events

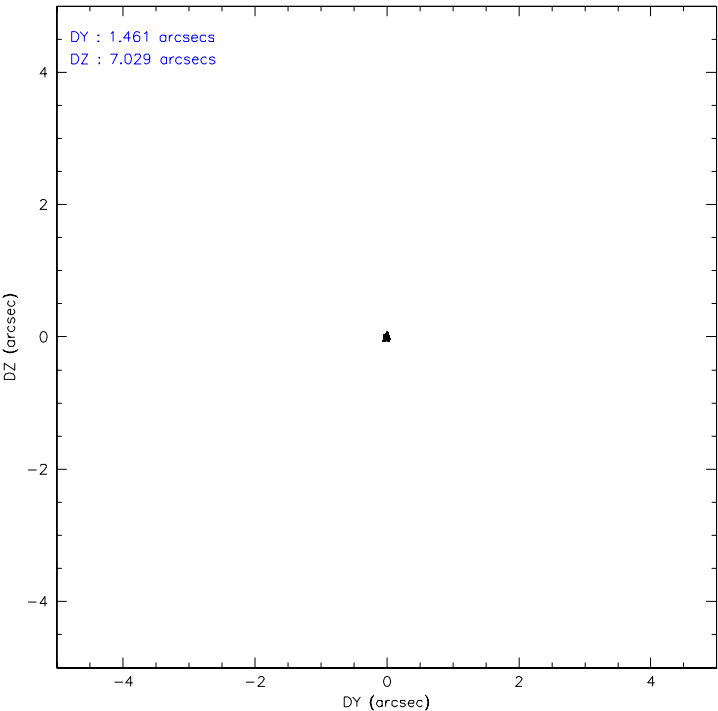
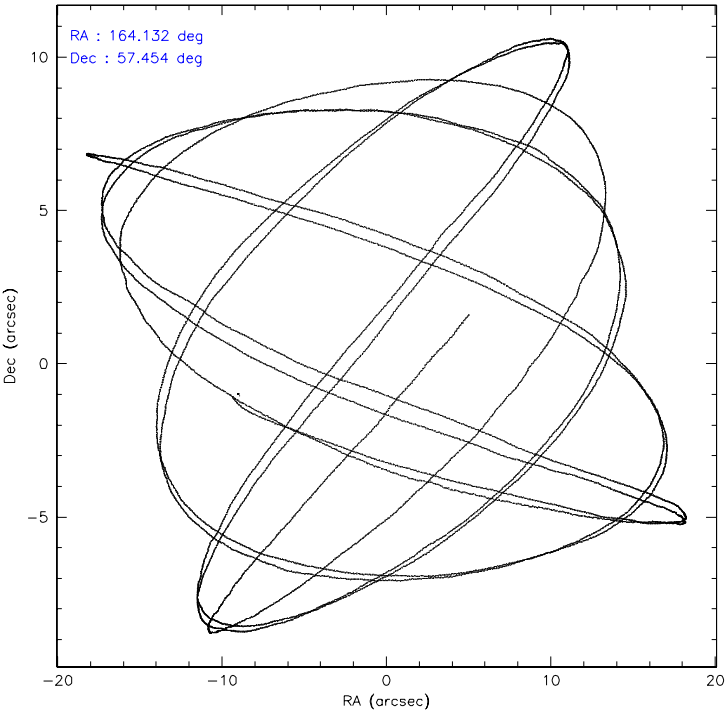
	ccd 0	ccd 1	ccd 2	ccd 3	ccd 6	ccd 8
level 1 events	34501	35362	36949	37259	37583	50514
rejected events	30226	30860	32615	33040	33049	40772
rejected %	87%	87%	88%	88%	87%	80%

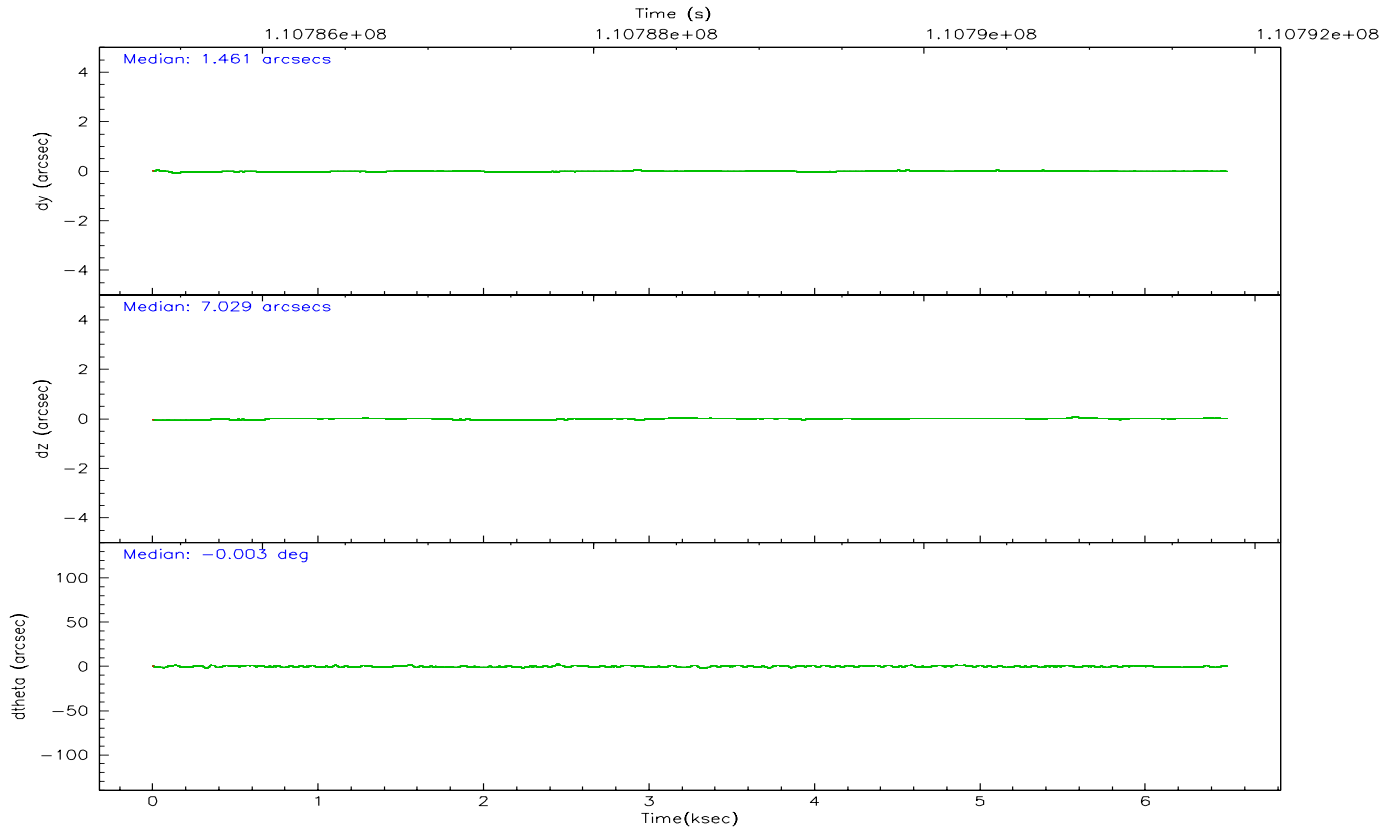
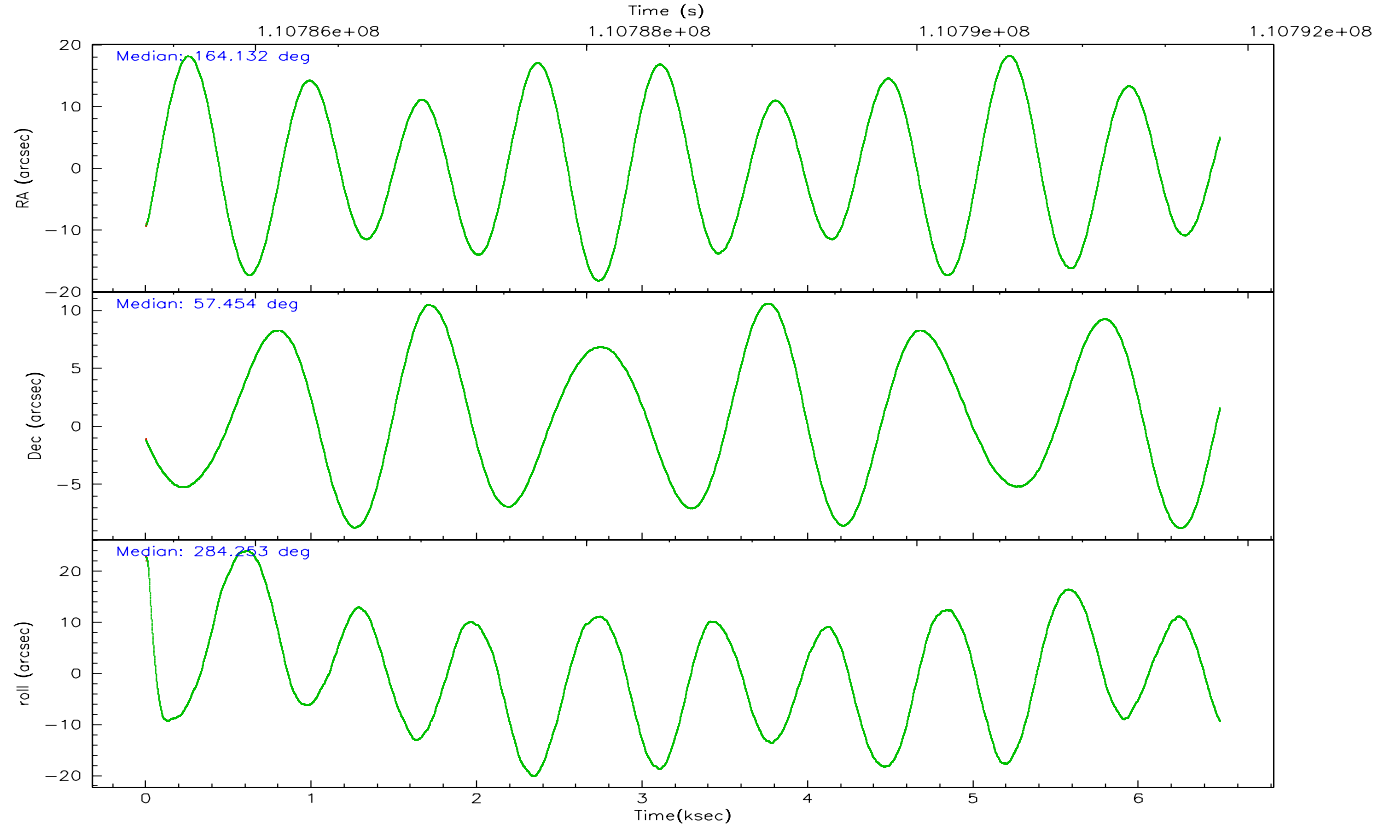
	ccd 0	ccd 1	ccd 2	ccd 3	ccd 6	ccd 8
grade 0 events	1872	1890	2014	1840	1928	3116
	5%	5%	5%	4%	5%	6%
grade 1 events	19	19	15	25	20	34
	0%	0%	0%	0%	0%	0%
grade 2 events	870	894	895	782	883	2065
	2%	2%	2%	2%	2%	4%
grade 3 events	433	462	375	444	436	1041
	1%	1%	1%	1%	1%	2%
grade 4 events	357	461	394	378	434	995
	1%	1%	1%	1%	1%	1%
grade 5 events	1356	1403	1255	1371	1503	1992
	3%	3%	3%	3%	3%	3%
grade 6 events	745	804	664	778	857	2530
	2%	2%	1%	2%	2%	5%
grade 7 events	28849	29429	31337	31641	31522	38741
	83%	83%	84%	84%	83%	76%

2.2 Compared Parameters

Parameter	Planned	Actual	Parameter	Planned	Actual
Instrument	ACIS	ACIS	Obspar format version number	6	6
Detector	ACIS-012368	ACIS-012368	Obspar file type	PREDICTED	ACTUAL
Grating	NONE	NONE	Obspar update status	NONE	UPDATED
Data mode	FAINT	FAINT	Number of optional ACIS chips dropped	0	0
Observation mode	POINTING	POINTING	On-chip summing requested	N	N
Pointing RA	164.096331	164.1320308239887	Subarray requested	NONE	NONE
Pointing Dec	57.473832	57.45410290155007	Alternating exposures requested	N	N
Pointing Roll	284.079190	284.2578169435246	Primary exposure time	0.000000	3.2
SIM focus pos (mm)	-0.782348	-0.7809083437167272			
SIM defocus (mm)	0	0.001439871863259334			
SIM translation stage pos (mm)	-233.592463	-233.5874344608287			
SIM translation stage offset (mm)	0	-0.005018542100998502			
Observation start time	110785523.184000	110785146.54934			
Observation start date	2001-07-06T05:44:19	2001-07-06T05:39:06			
Observation end time	110791523.184000	110792145.24962			
Observation end date	2001-07-06T07:24:19	2001-07-06T07:35:45			
Read mode	TIMED	TIMED			

2.3 Aspect



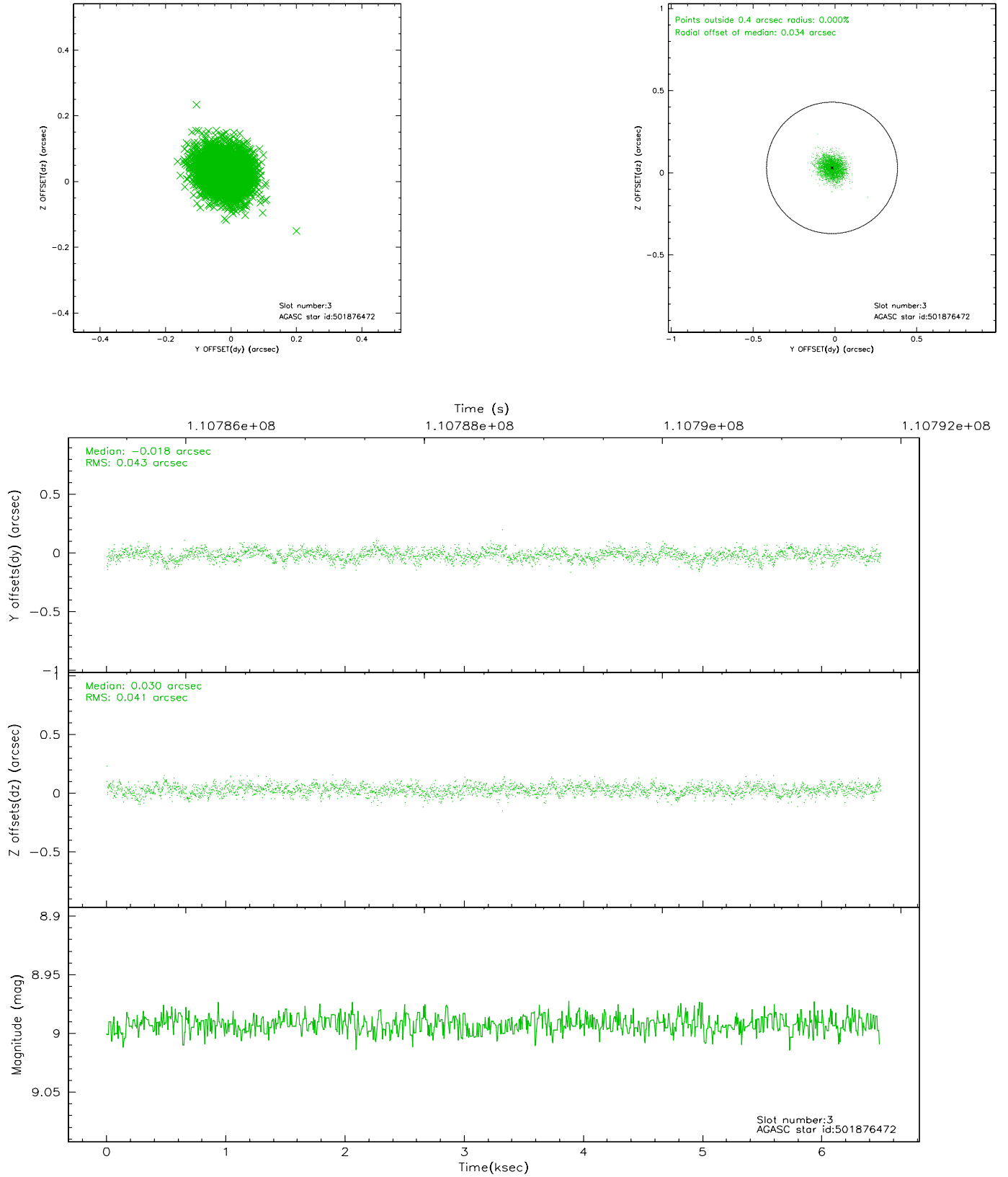


Slot Statistics

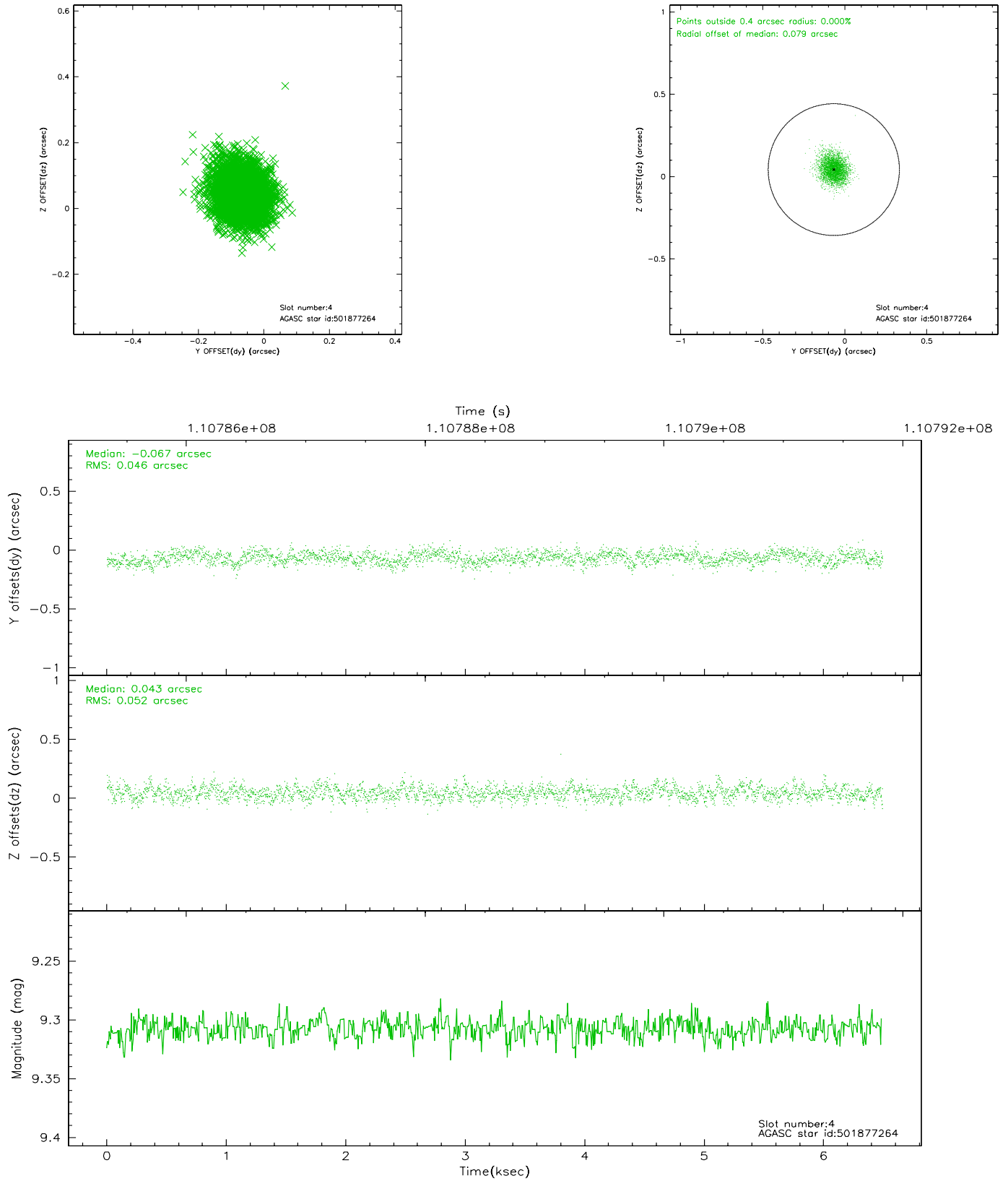
slot	status	id	mag	n_pts	med_dy	med_dz	dr1	dr2	ra	dec	mean_y	mean_z
0	FID	ACIS-I-2	7.16	1584	-0.027	-0.042	0.009	0.015	0.000000	0.000000	-755.81	-836.84
1	FID	ACIS-I-4	7.18	1584	-0.088	0.035	0.005	0.009	0.000000	0.000000	2157.76	1069.00
2	FID	ACIS-I-5	7.23	1584	0.014	0.076	0.008	0.014	0.000000	0.000000	-1808.46	1067.87
3	GUIDE	501876472	8.99	3165	-0.018	0.030	0.064	0.101	163.621724	57.867447	-1598.27	-537.21
4	GUIDE	501877264	9.31	3166	-0.067	0.043	0.074	0.118	163.254394	57.702218	-1201.40	-1369.53
5	GUIDE	501619448	9.61	3165	0.049	0.130	0.101	0.165	165.050075	56.997105	2106.81	1398.42
6	GUIDE	501875376	6.71	3168	-0.023	-0.199	0.057	0.088	164.111621	57.502963	-93.57	53.42
7	GUIDE	501488296	9.75	3166	0.055	-0.008	0.097	0.158	164.354320	57.421227	304.70	438.22

2.4 Star Slots

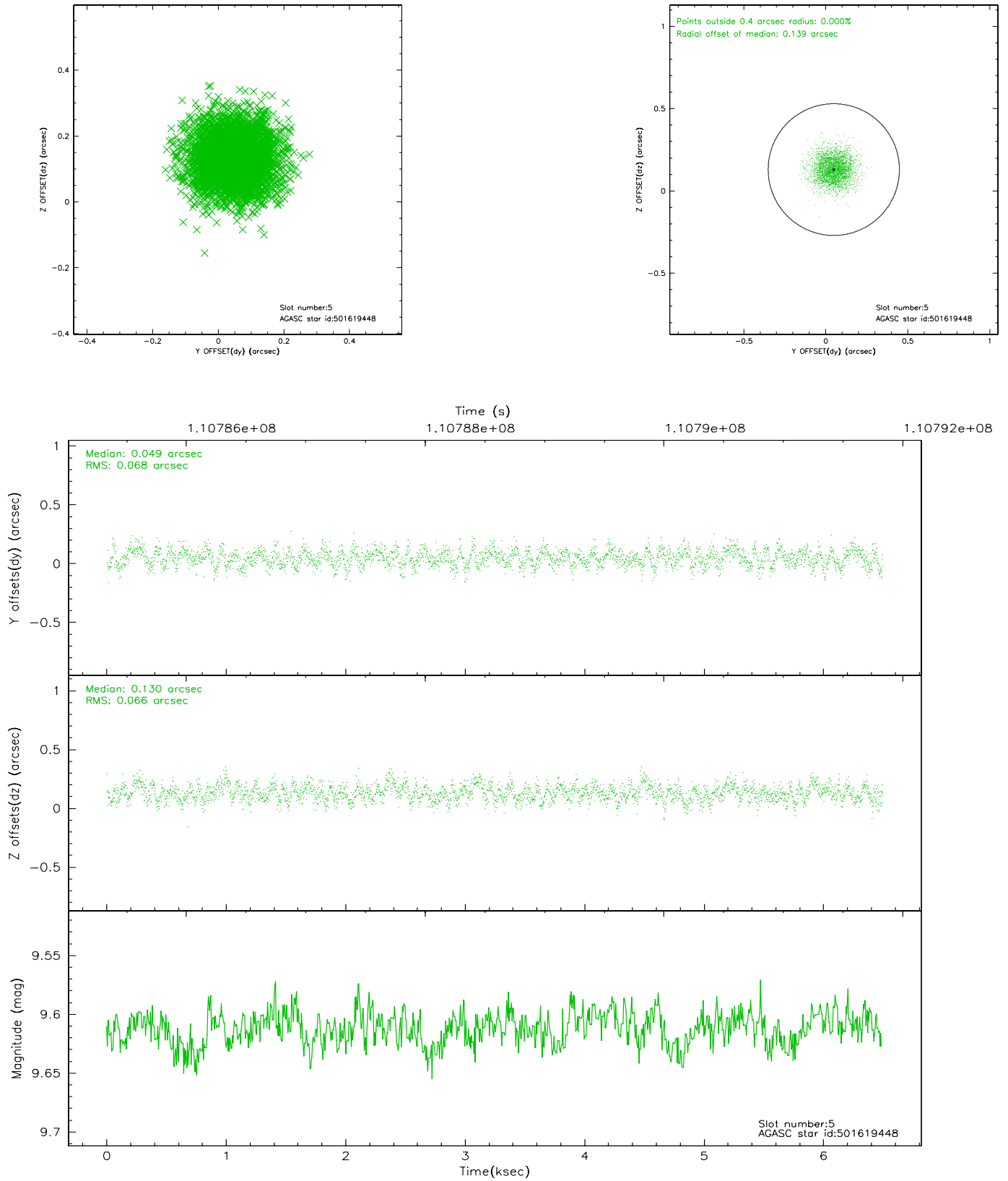
2.4.1 Slot 3



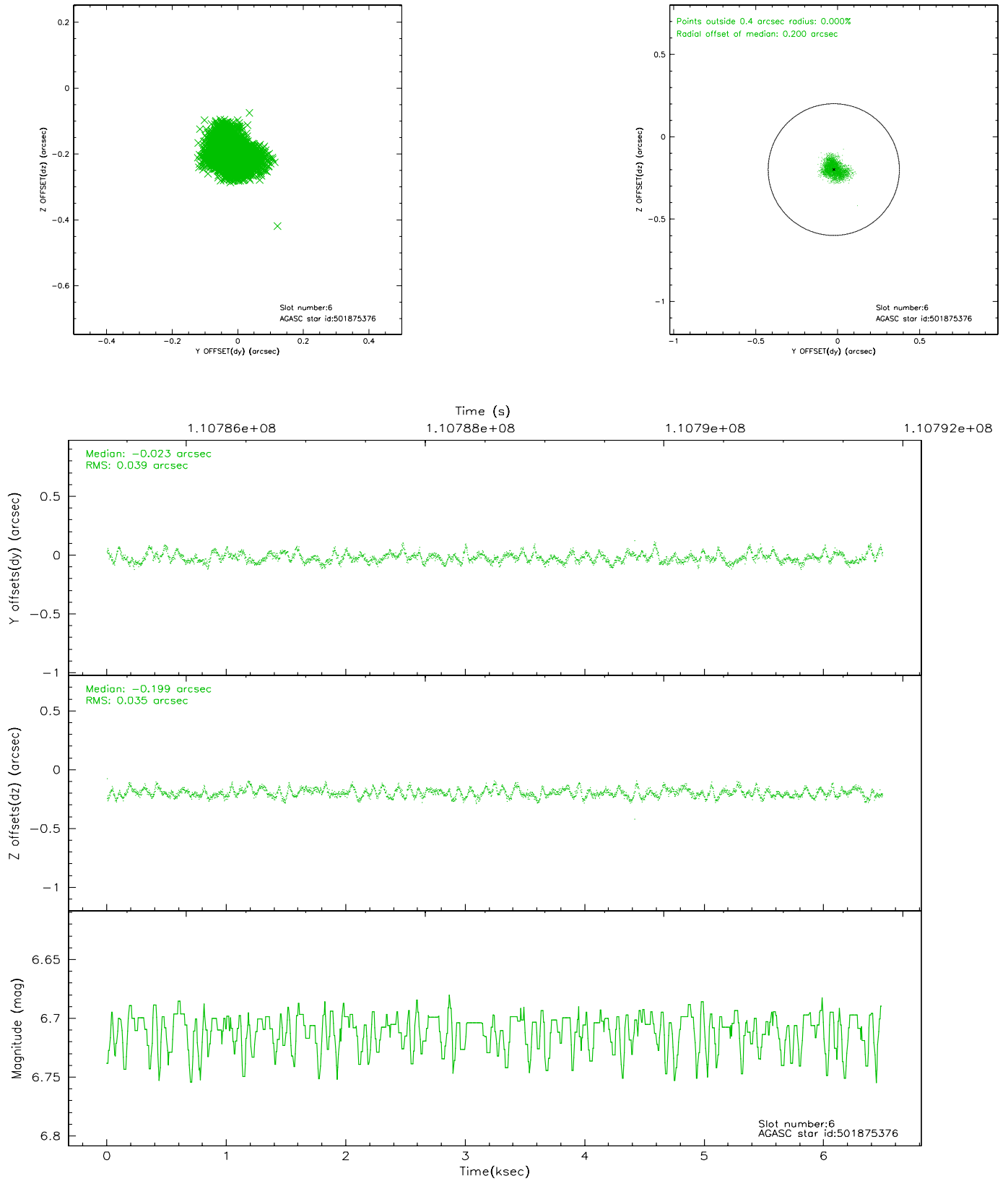
2.4.2 Slot 4



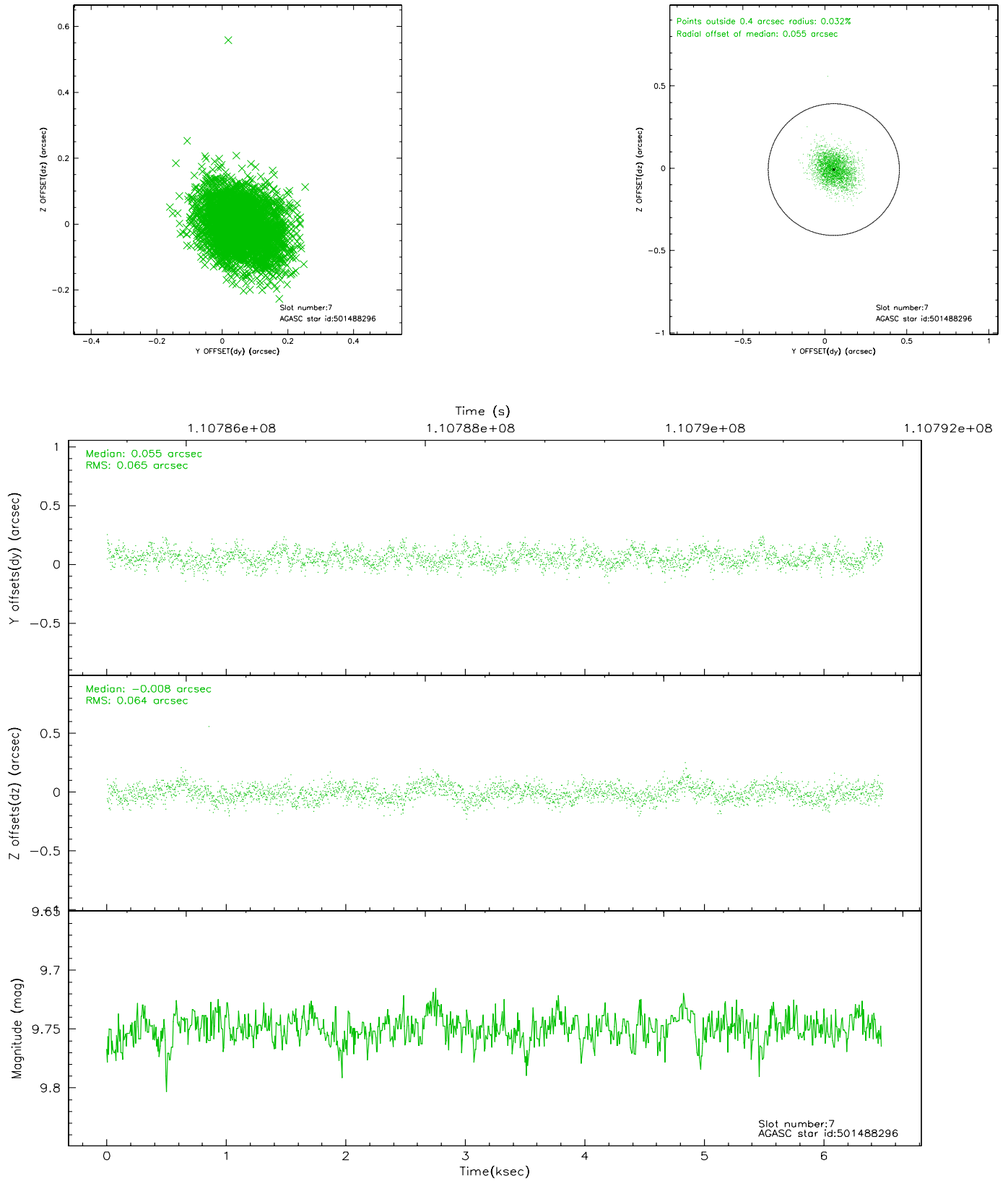
2.4.3 Slot 5



2.4.4 Slot 6

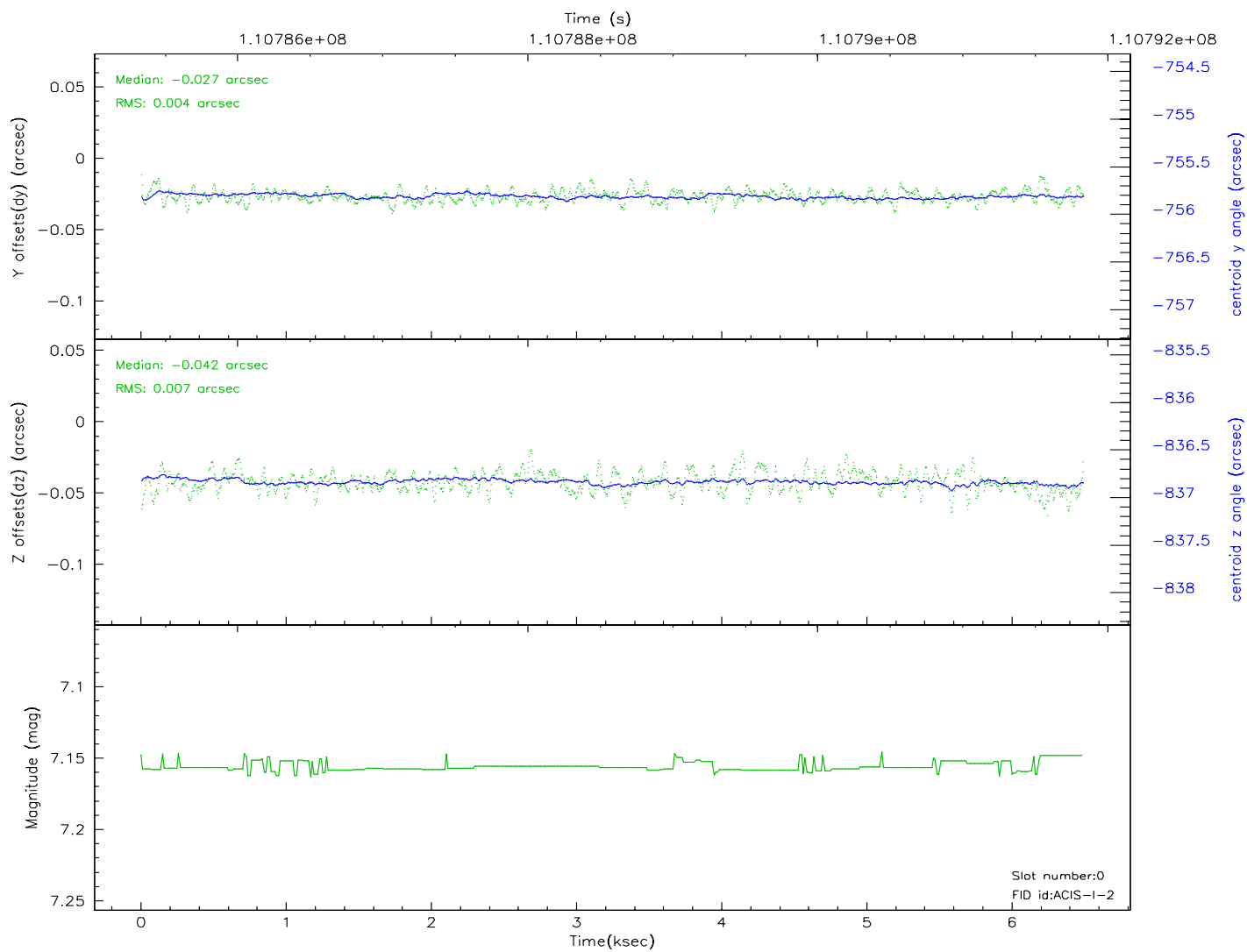
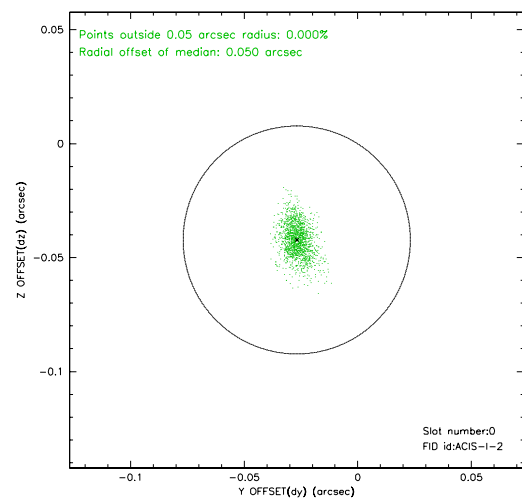
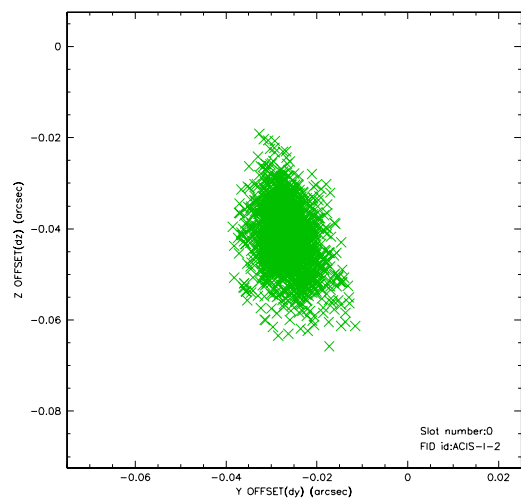


2.4.5 Slot 7

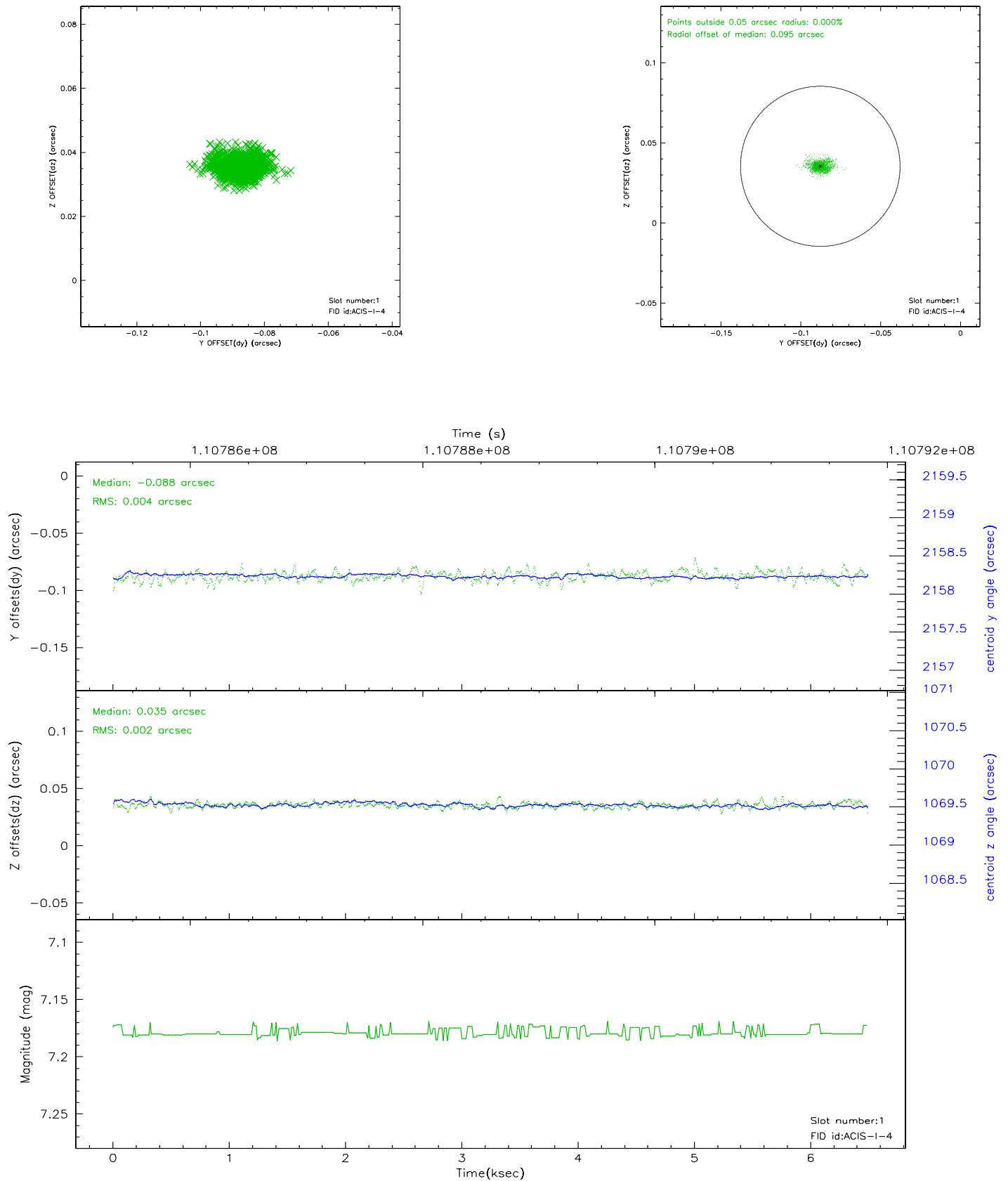


2.5 FID Slots

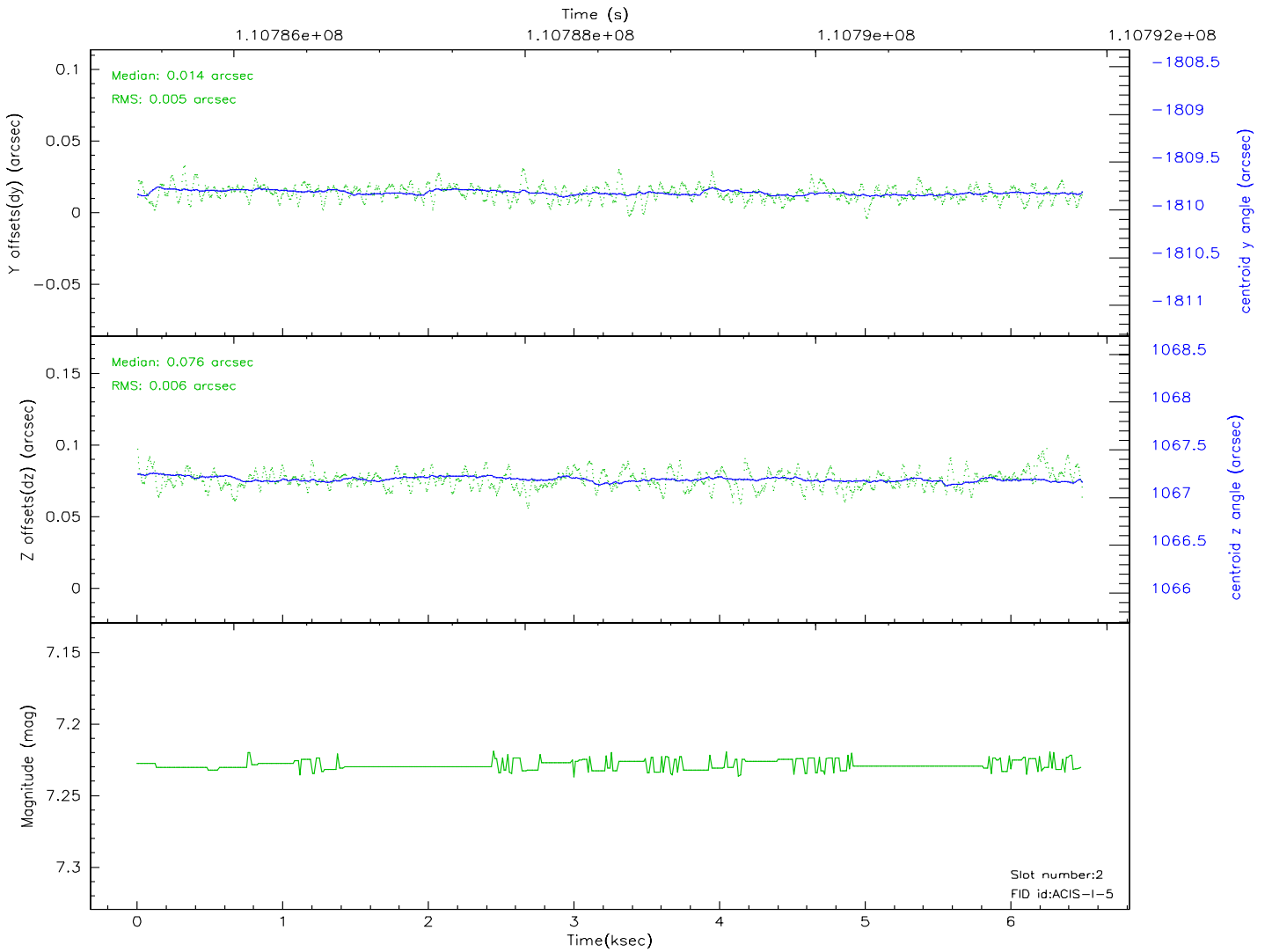
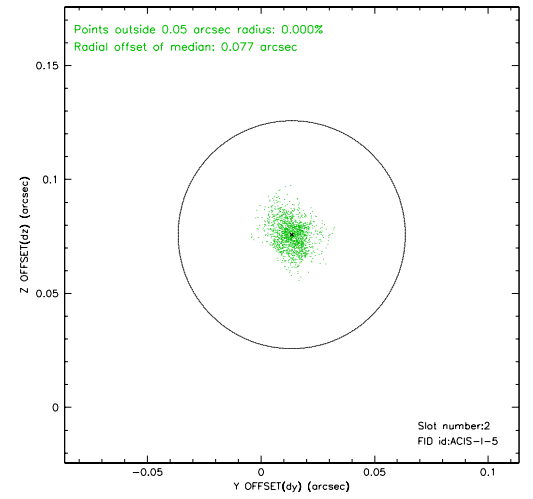
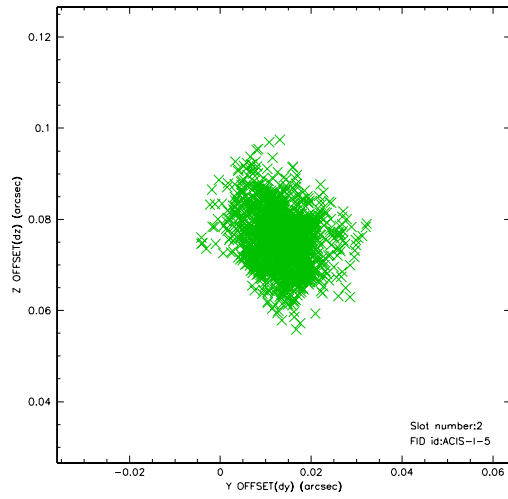
2.5.1 Slot 0



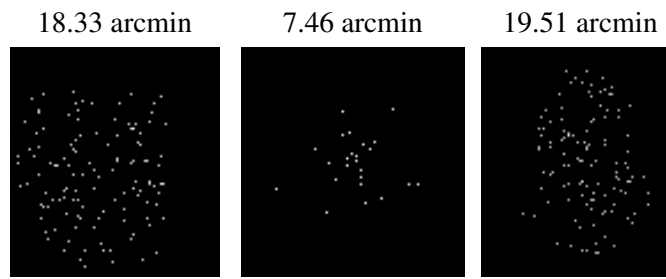
2.5.2 Slot 1



2.5.3 Slot 2



3 Point Sources



A Summary

A.1 Status

V&V Scientist	Beth Sundheim
V&V Date (YYYY-MM-DD)	2006.12.11
V&V Edition	1
V&V Disposition and Status	OK
V&V Charge Time	5.8

A.2 Comments