

V&V Reference Report

L2 ASCDS Version : 7.6.9

Observation 1692 - L2 Version 001
Chandra X-Ray Center

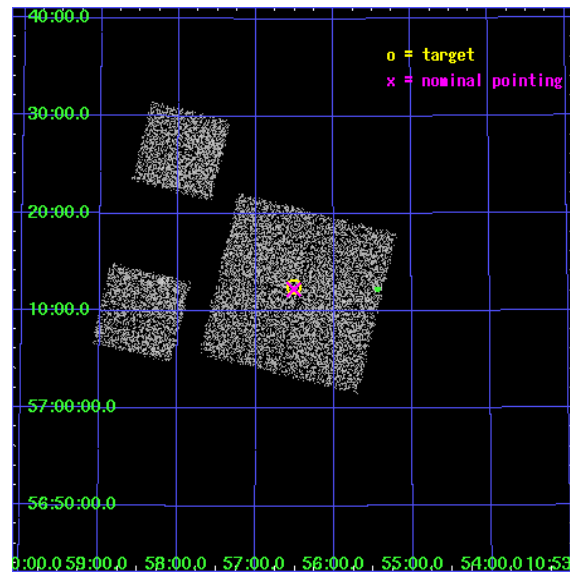
L2 Processing Date : Dec 11 2006

Contents

1	Front	2
2	OBI	3
2.1	OBI	3
2.1.1	Images	3
2.1.2	Bias	3
2.1.3	Parameters	4
2.1.4	Events	4
2.2	Compared Parameters	5
2.3	Aspect	6
2.4	Star Slots	9
2.4.1	Slot 3	9
2.4.2	Slot 4	10
2.4.3	Slot 5	11
2.4.4	Slot 6	12
2.4.5	Slot 7	13
2.5	FID Slots	14
2.5.1	Slot 0	14
2.5.2	Slot 1	15
2.5.3	Slot 2	16
3	Point Sources	17
A	Summary	18
A.1	Status	18
A.2	Comments	18

1 Front

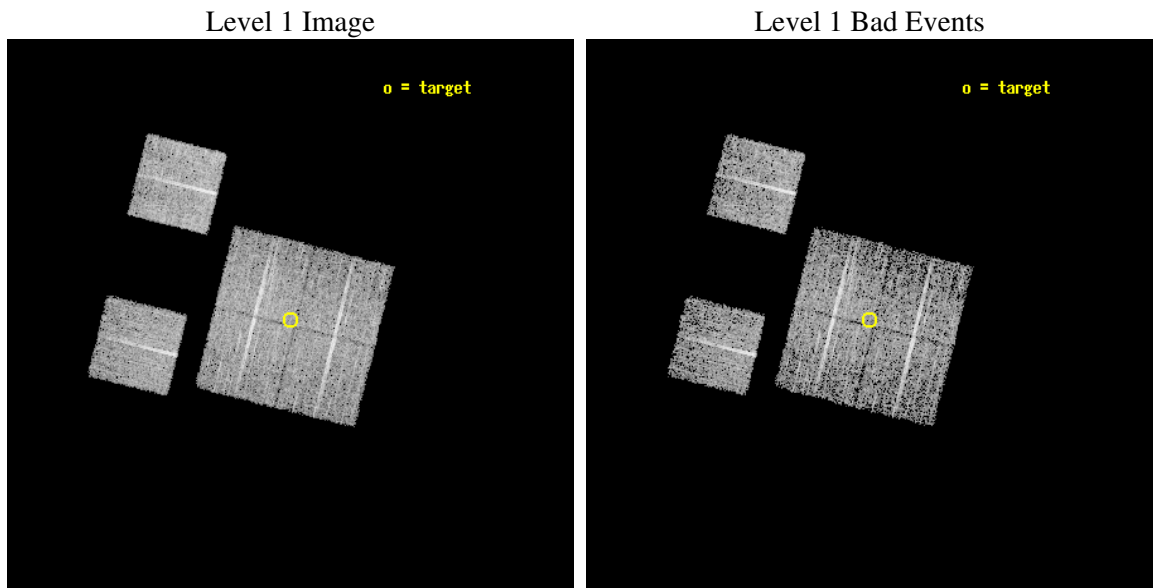
seq_num	900051
obs_id	1692
title	LOCKMAN HOLE SHALLOW SURVEY
observer	Dr. Stephen Murray
object	LOCKMAN HOLE #8
dtcycle	0
cycle	P
ra_targ	164.129167
dec_targ	57.208889
ra_nom	164.12793116806
dec_nom	57.204270381489
roll_nom	284.02277155483
revision	2
ontime	4758.4000044316
livetime	4698.146278411
ontime0	4758.4000044316
ontime1	4755.1590441912
ontime2	4758.4000044316
ontime3	4758.4000044316
ontime6	4758.4000044316
ontime8	4758.4000044316
l2events	18233



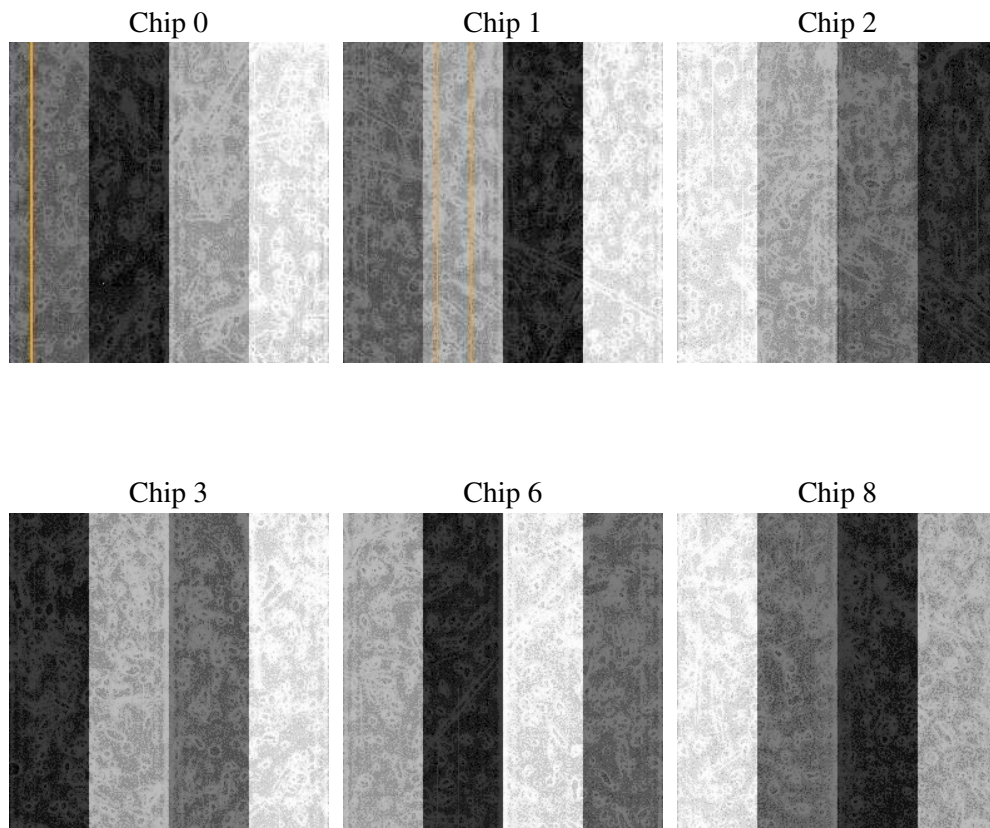
2 OBI

2.1 OBI

2.1.1 Images



2.1.2 Bias



2.1.3 Parameters

obi_num	0
ascdsver	7.6.9
caldsver	3.2.4
date	2006-12-11T18:53:01
revision	2

sched_exp_time	5000.000000
ontime	4764.2655660957
ontime0	4764.2655461878
ontime1	4761.0245859474
ontime2	4764.2655660957
ontime3	4764.2655660957
ontime6	4764.2655660957
ontime8	4764.2655660957
l1events	189120

2.1.4 Events

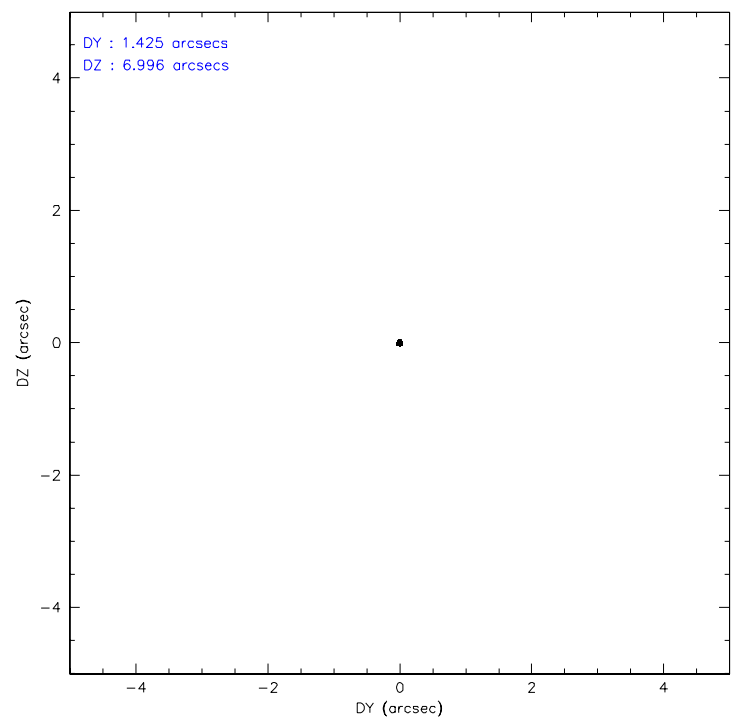
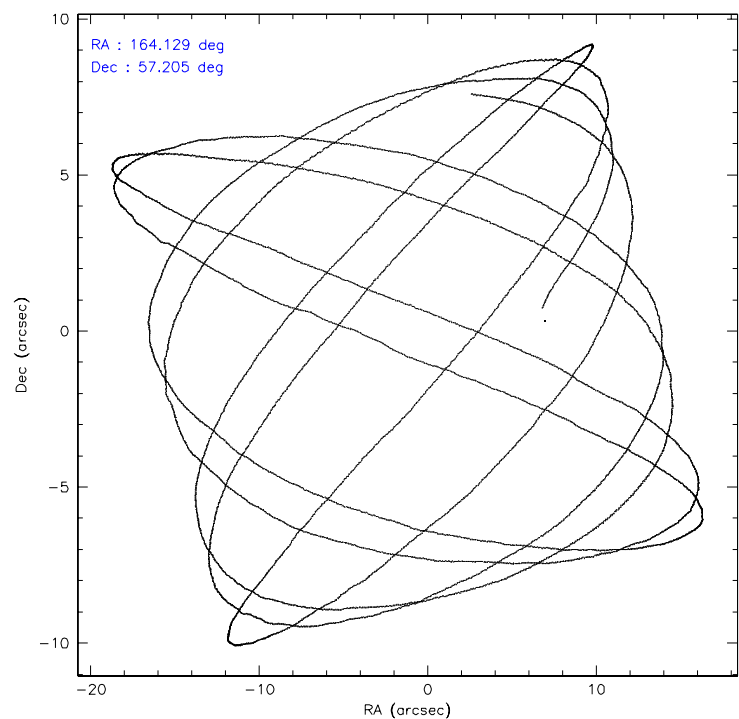
	ccd 0	ccd 1	ccd 2	ccd 3	ccd 6	ccd 8
level 1 events	27527	28076	30574	31806	31336	39801
rejected events	23927	24447	27157	28296	27915	32593
rejected %	86%	87%	88%	88%	89%	81%

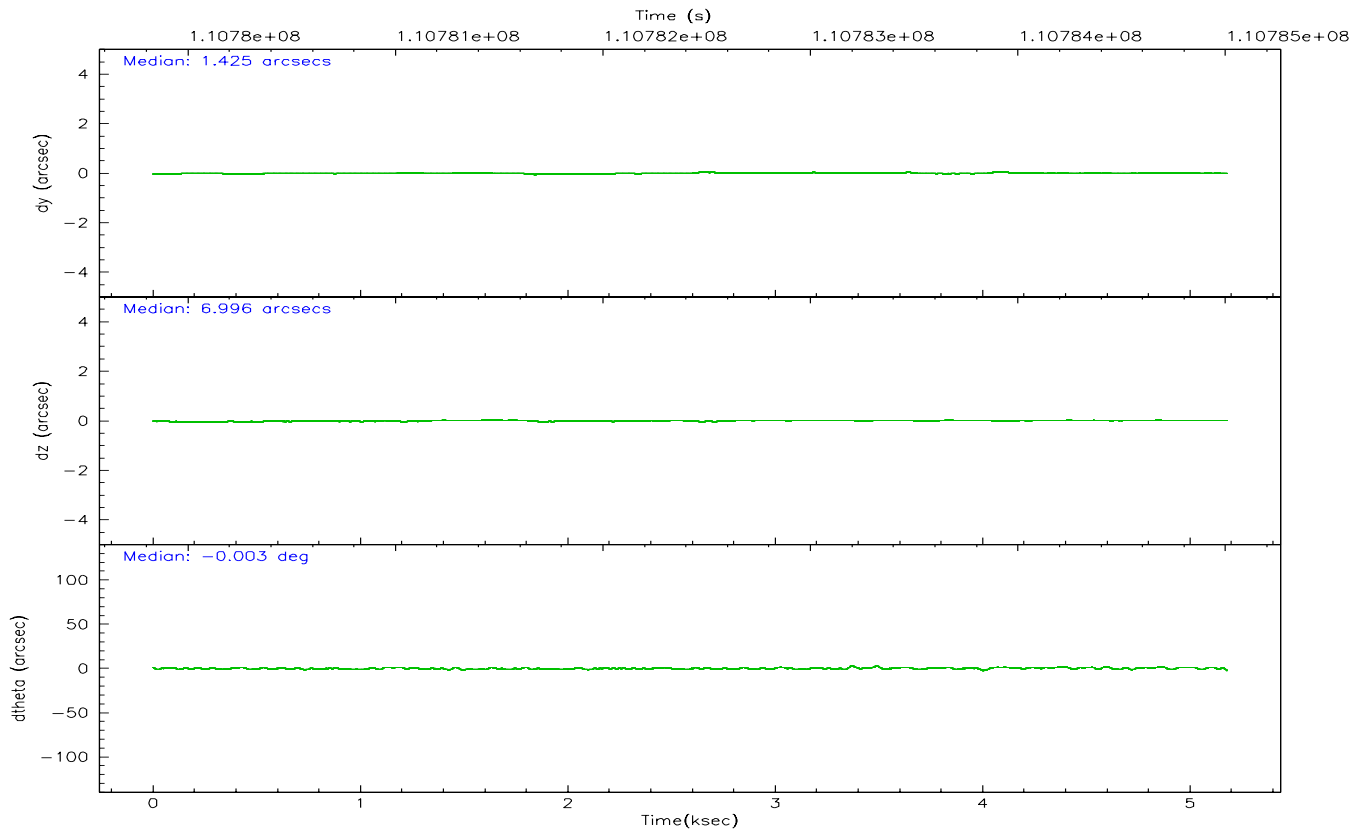
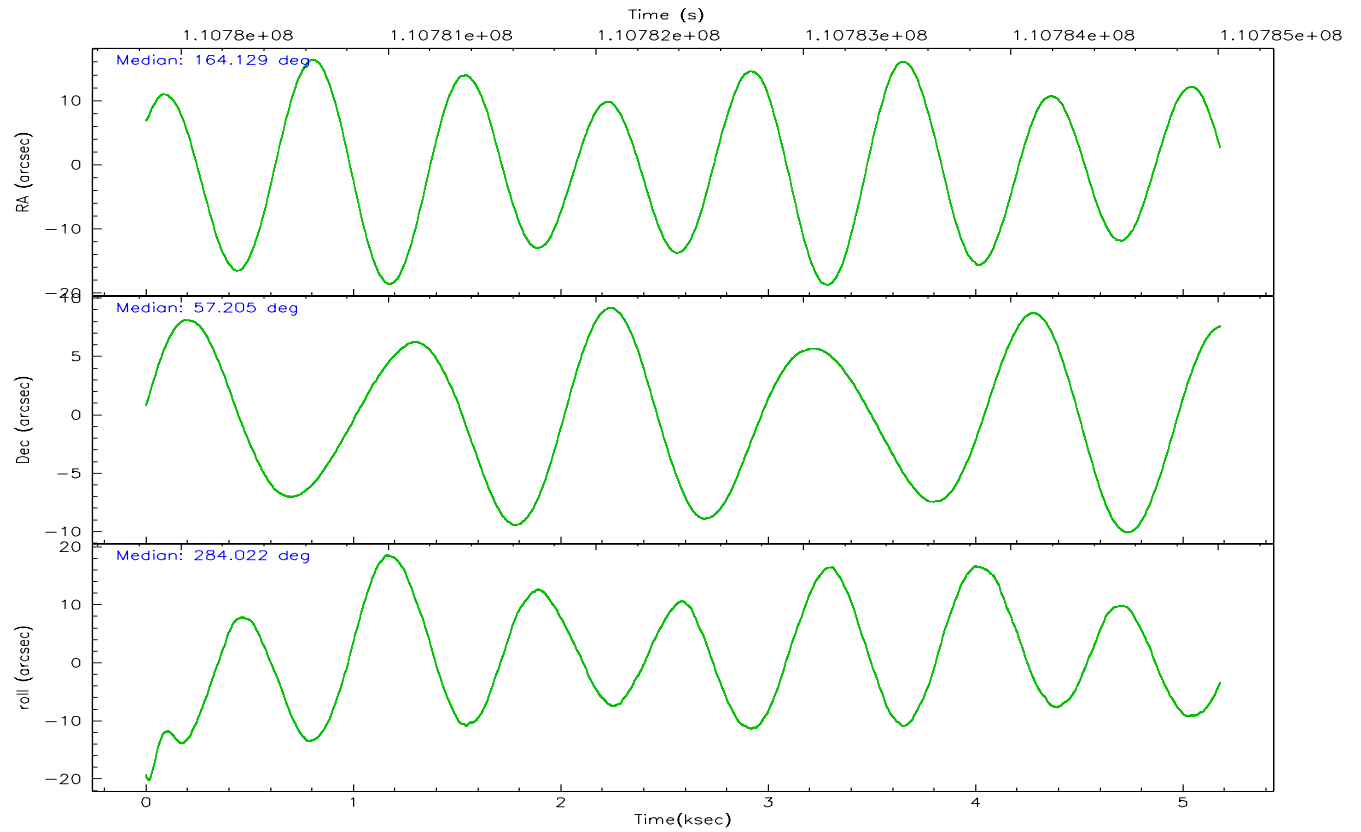
	ccd 0	ccd 1	ccd 2	ccd 3	ccd 6	ccd 8
grade 0 events	1556	1529	1411	1446	1394	2258
	5%	5%	4%	4%	4%	5%
grade 1 events	14	18	13	19	13	27
	0%	0%	0%	0%	0%	0%
grade 2 events	737	686	745	714	692	1646
	2%	2%	2%	2%	2%	4%
grade 3 events	395	387	322	333	335	739
	1%	1%	1%	1%	1%	1%
grade 4 events	318	346	333	369	358	688
	1%	1%	1%	1%	1%	1%
grade 5 events	1061	1252	997	1216	1256	1657
	3%	4%	3%	3%	4%	4%
grade 6 events	601	683	615	652	646	1879
	2%	2%	2%	2%	2%	4%
grade 7 events	22845	23175	26138	27057	26642	30907
	82%	82%	85%	85%	85%	77%

2.2 Compared Parameters

Parameter	Planned	Actual	Parameter	Planned	Actual
Instrument	ACIS	ACIS	Obspar format version number	6	6
Detector	ACIS-012368	ACIS-012368	Obspar file type	PREDICTED	ACTUAL
Grating	NONE	NONE	Obspar update status	NONE	UPDATED
Data mode	FAINT	FAINT	Number of optional ACIS chips dropped	0	0
Observation mode	POINTING	POINTING	On-chip summing requested	N	N
Pointing RA	164.092535	164.1279311680582	Subarray requested	NONE	NONE
Pointing Dec	57.223915	57.20427038148877	Alternating exposures requested	N	N
Pointing Roll	283.843847	284.0227715548255	Primary exposure time	0.000000	3.2
SIM focus pos (mm)	-0.782348	-0.7809083437167272			
SIM defocus (mm)	0	0.001439871863259334			
SIM translation stage pos (mm)	-233.592463	-233.5874344608287			
SIM translation stage offset (mm)	0	-0.005018542100998502			
Observation start time	110780013.184000	110779637.17413			
Observation start date	2001-07-06T04:12:29	2001-07-06T04:07:17			
Observation end time	110785013.184000	110785146.54934			
Observation end date	2001-07-06T05:35:49	2001-07-06T05:39:06			
Read mode	TIMED	TIMED			

2.3 Aspect



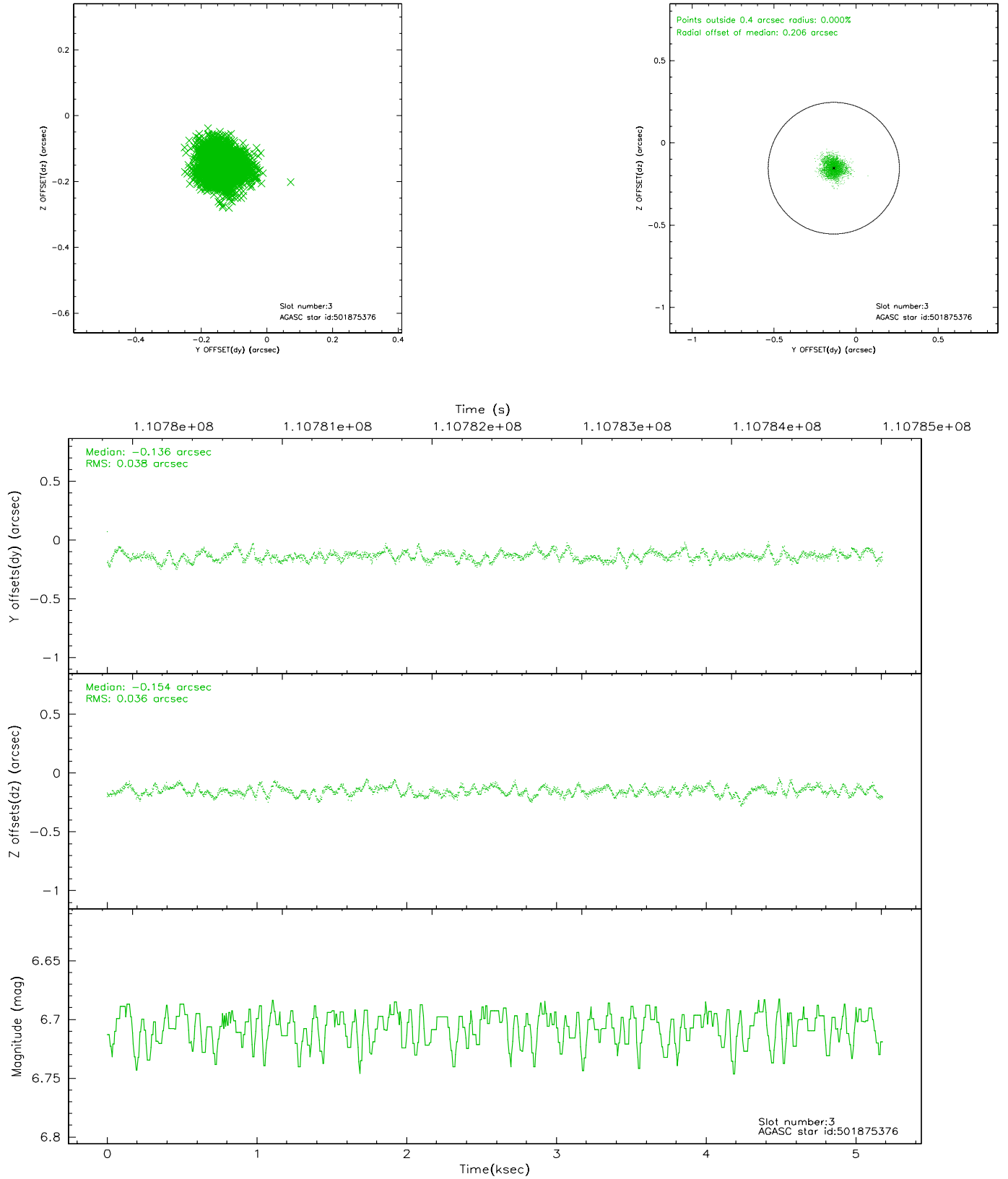


Slot Statistics

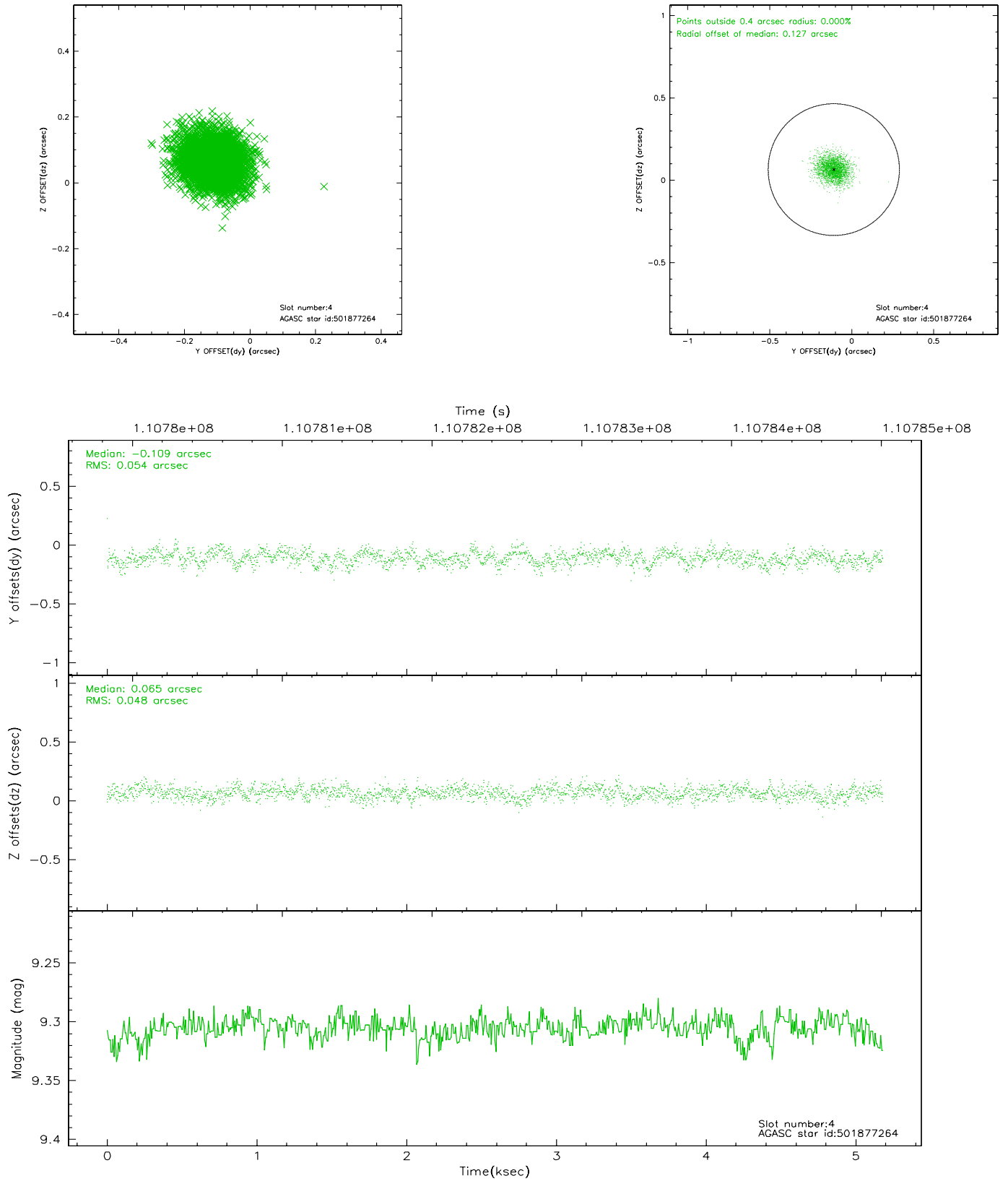
slot	status	id	mag	n_pts	med_dy	med_dz	dr1	dr2	ra	dec	mean_y	mean_z
0	FID	ACIS-I-2	7.16	1263	-0.029	-0.046	0.008	0.014	0.000000	0.000000	-755.78	-836.81
1	FID	ACIS-I-4	7.18	1264	-0.089	0.038	0.006	0.010	0.000000	0.000000	2157.67	1068.90
2	FID	ACIS-I-5	7.23	1264	0.016	0.077	0.009	0.013	0.000000	0.000000	-1808.08	1068.07
3	GUIDE	501875376	6.71	2528	-0.136	-0.154	0.057	0.089	164.111621	57.502963	-966.00	274.66
4	GUIDE	501877264	9.31	2525	-0.109	0.065	0.077	0.126	163.254394	57.702218	-2067.13	-1152.15
5	GUIDE	501618368	9.64	2526	0.110	0.054	0.091	0.143	164.847681	56.860694	1617.19	1130.35
6	GUIDE	501488296	9.75	2527	0.053	0.011	0.096	0.159	164.354320	57.421227	-567.87	661.93
7	GUIDE	501486512	9.62	2527	0.083	0.023	0.088	0.143	163.579075	56.729186	1483.52	-1411.01

2.4 Star Slots

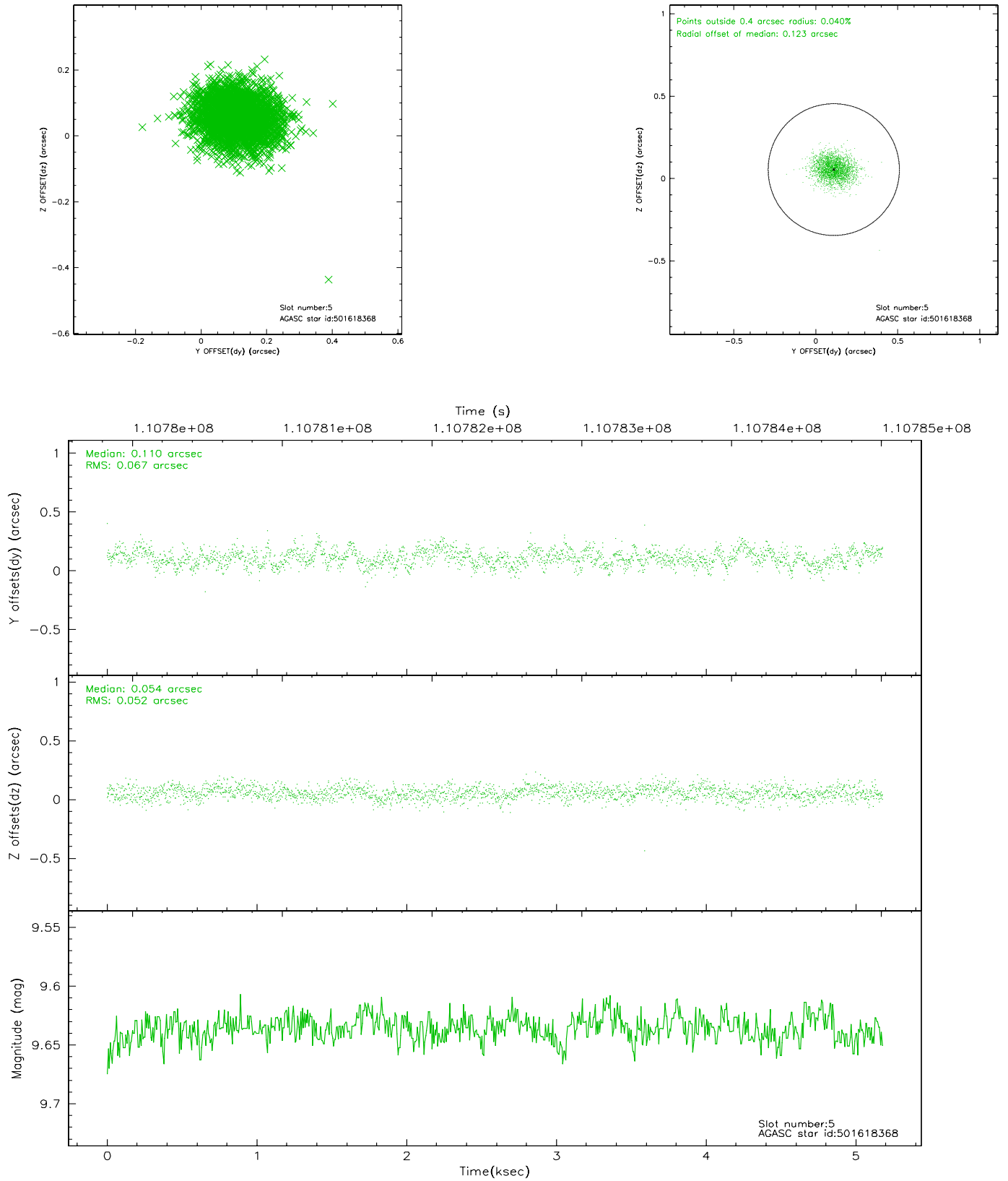
2.4.1 Slot 3



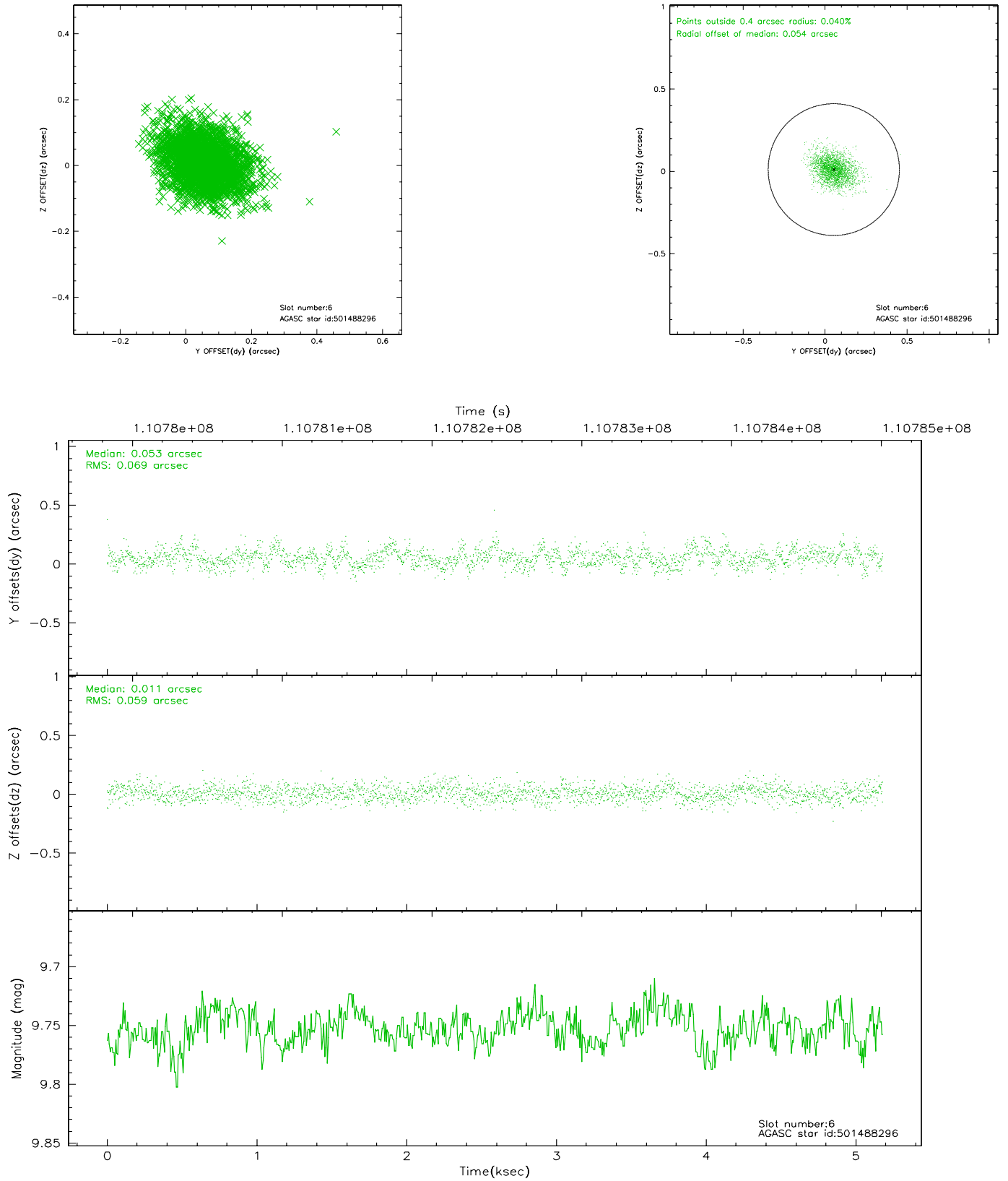
2.4.2 Slot 4



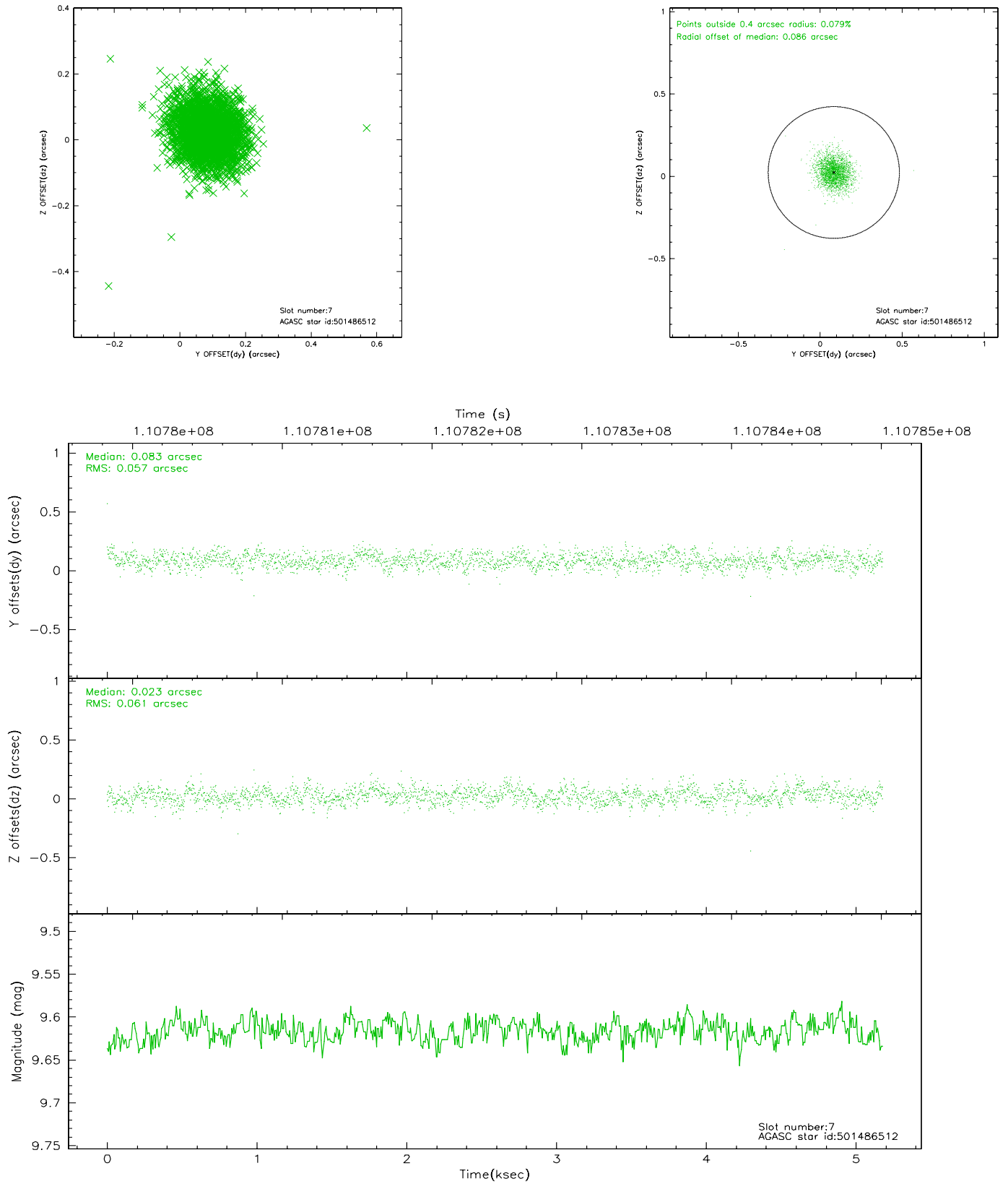
2.4.3 Slot 5



2.4.4 Slot 6

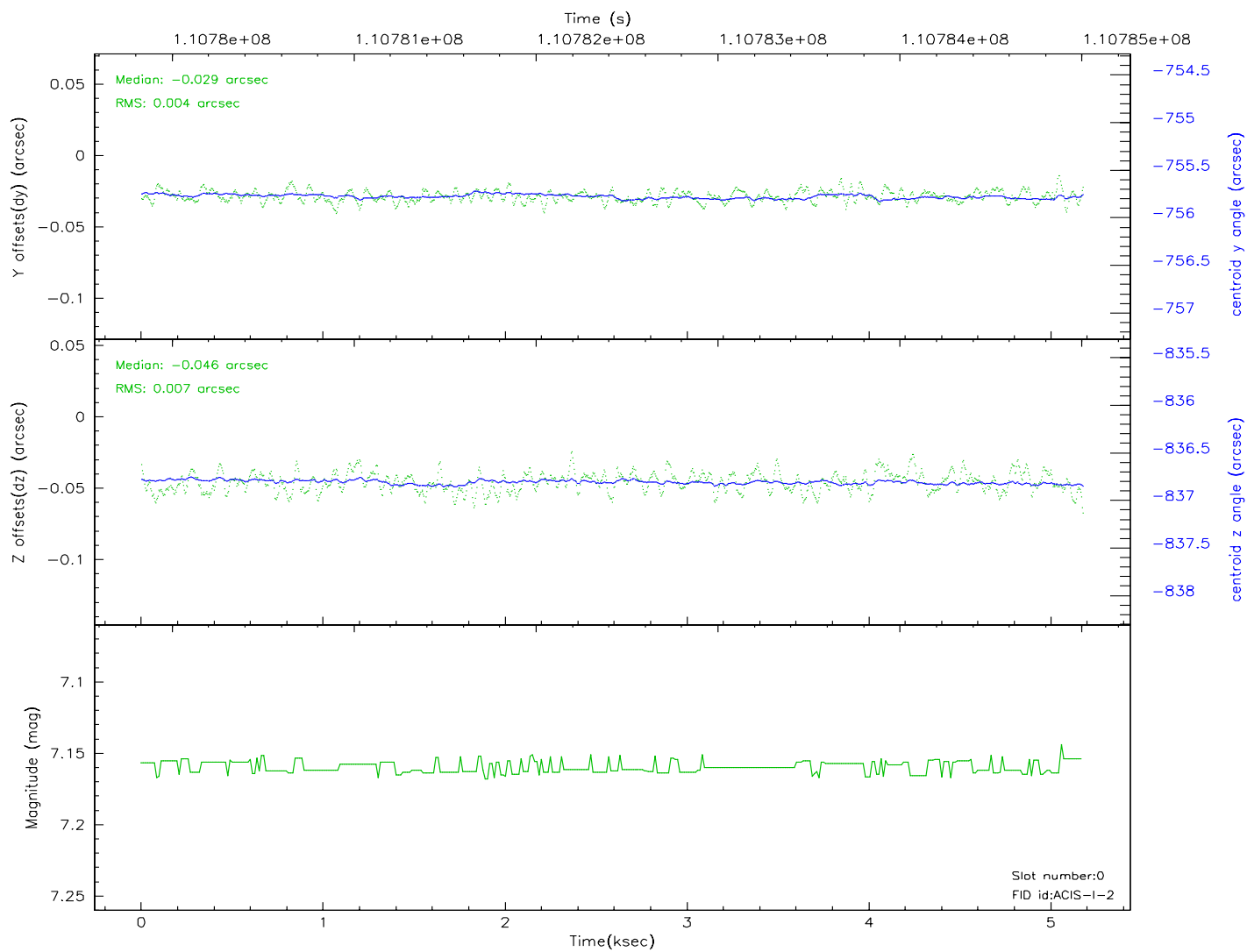
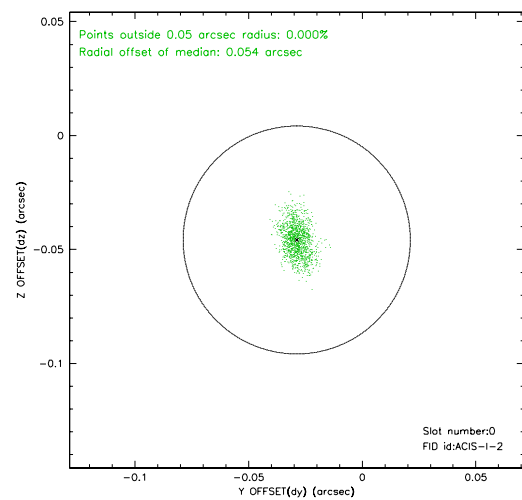
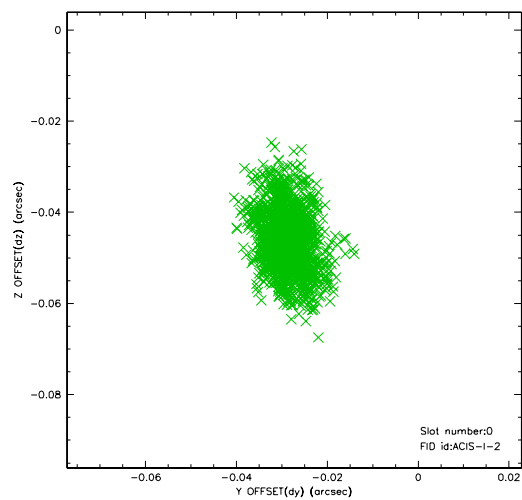


2.4.5 Slot 7

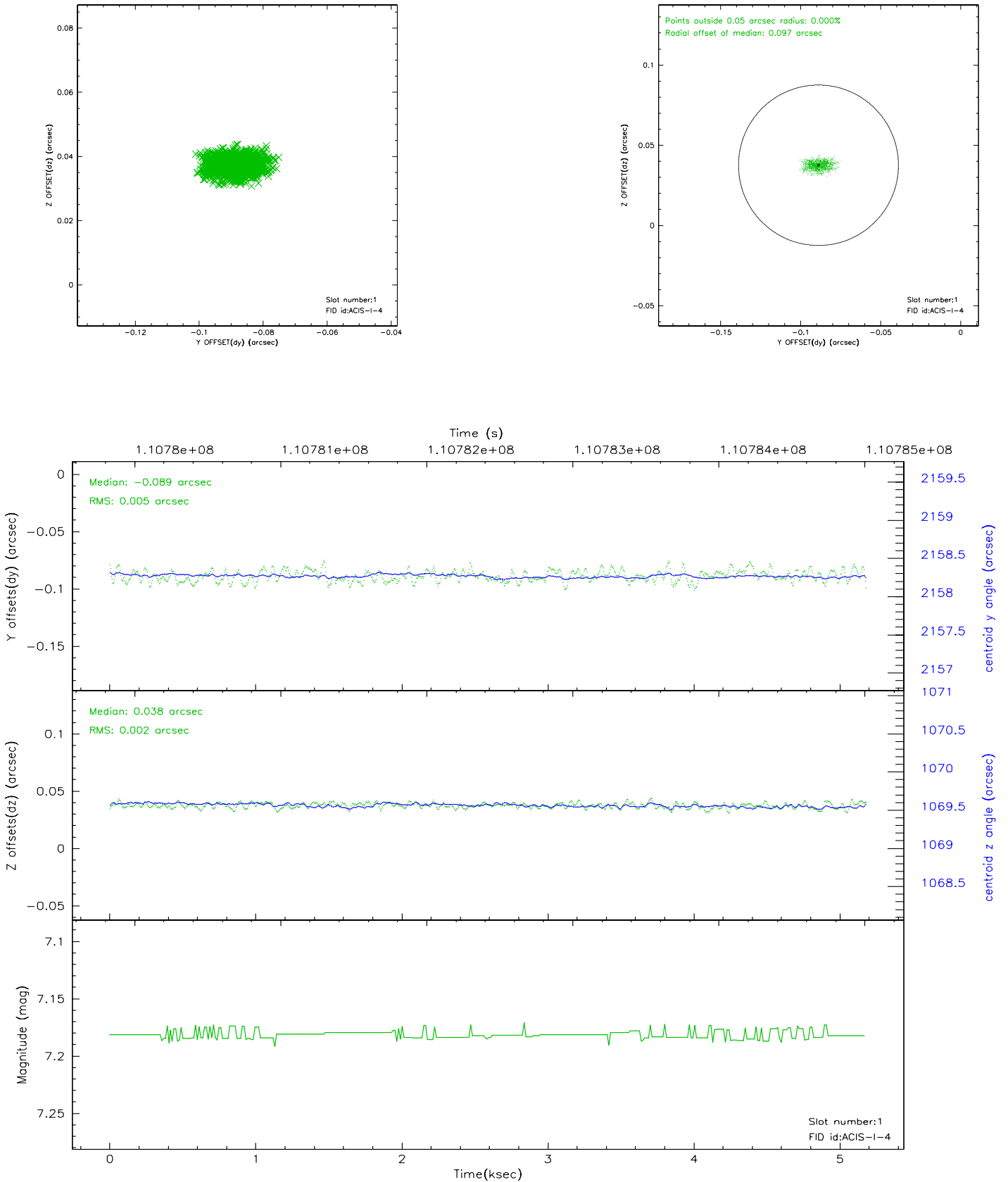


2.5 FID Slots

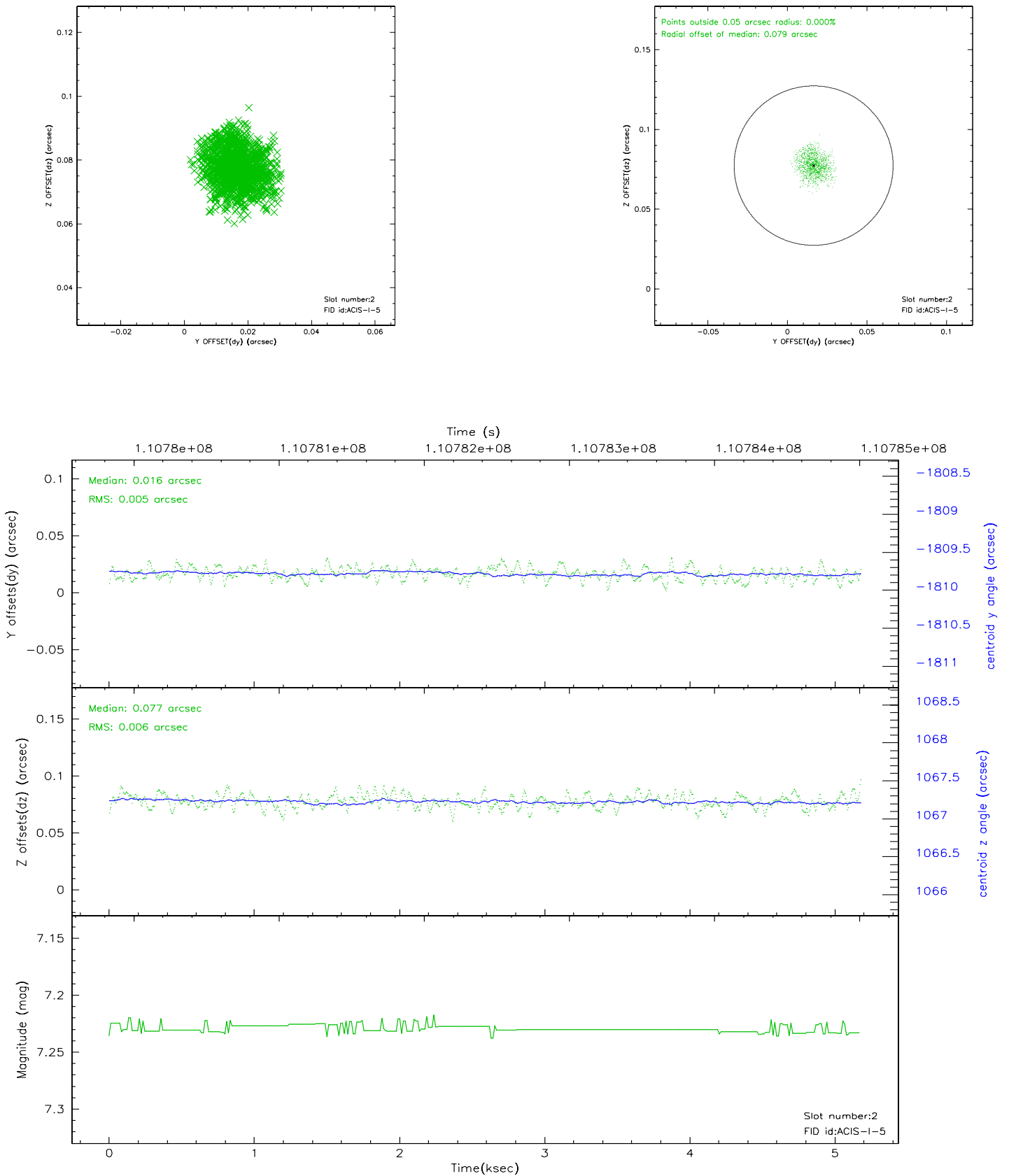
2.5.1 Slot 0



2.5.2 Slot 1



2.5.3 Slot 2



3 Point Sources

8.79 arcmin



A Summary

A.1 Status

V&V Scientist	Beth Sundheim
V&V Date (YYYY-MM-DD)	2006.12.11
V&V Edition	1
V&V Disposition and Status	OK
V&V Charge Time	4.761

A.2 Comments