

V&V Reference Report

L2 ASCDS Version : 8.4.5

Observation 1691 - L2 Version 3
Chandra X-Ray Center

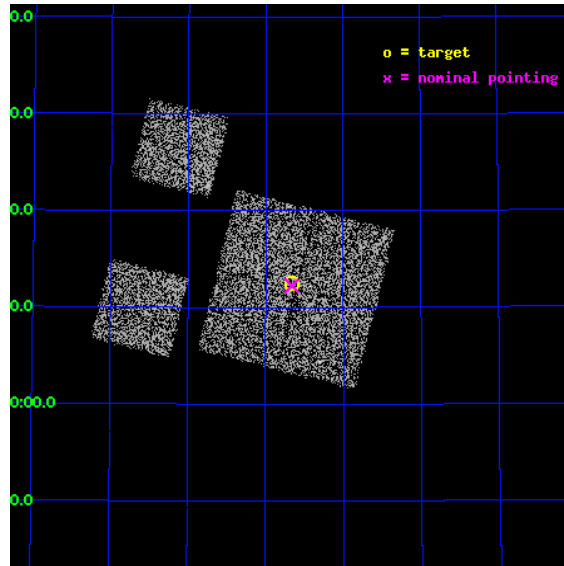
L2 Processing Date : Sep 20 2012

Contents

1	Front	2
2	OBI	3
2.1	OBI	3
2.1.1	Images	3
2.1.2	Bias	3
2.1.3	Parameters	4
2.1.4	Events	4
2.2	Compared Parameters	5
2.3	Aspect	6
2.4	Star Slots	9
2.4.1	Slot 3	9
2.4.2	Slot 4	10
2.4.3	Slot 5	11
2.4.4	Slot 6	12
2.4.5	Slot 7	13
2.5	FID Slots	14
2.5.1	Slot 0	14
2.5.2	Slot 1	15
2.5.3	Slot 2	16
A	Summary	17
A.1	Status	17
A.2	Comments	17

1 Front

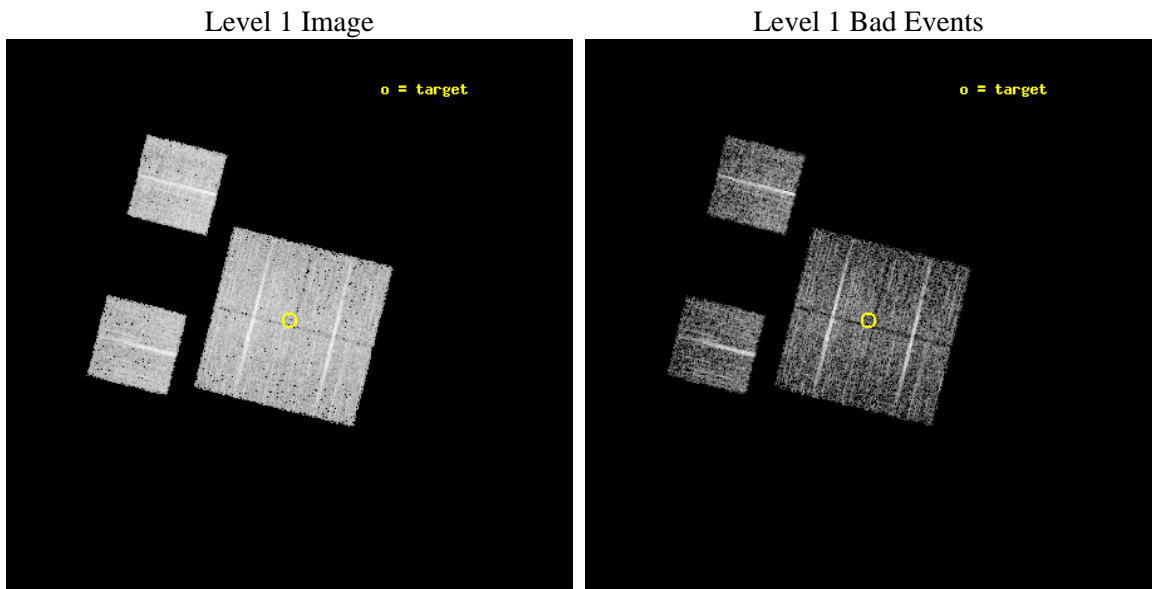
seq_num	900050	Sequence number
obs_id	1691	Observation id
title	LOCKMAN HOLE SHALLOW SURVEY	Proposal title
observer	Dr. Stephen Murray	Principal investigator
object	LOCKMAN HOLE #7	Source name
dtcycle	0	
cycle	P	events from which exps? Prim/Second/Both
ra_targ	163.916667	Observer's specified target RA [deg]
dec_targ	57.208889	Observer's specified target Dec [deg]
ra_nom	163.91536697428	Nominal RA [deg]
dec_nom	57.20417555745	Nominal Dec [deg]
roll_nom	284.156268783	Nominal Roll [deg]
revision	3	Processing version of data
ontime	4758.4000044167	Sum of GTIs [s]
livetime	4698.1462783963	Livetime [s]
ontime0	4758.4000044167	Sum of GTIs [s]
ontime1	4758.4000044167	Sum of GTIs [s]
ontime2	4758.4000044167	Sum of GTIs [s]
ontime3	4758.4000044167	Sum of GTIs [s]
ontime6	4758.4000044167	Sum of GTIs [s]
ontime8	4758.4000044167	Sum of GTIs [s]
l2events	18488	Number of level 2 events



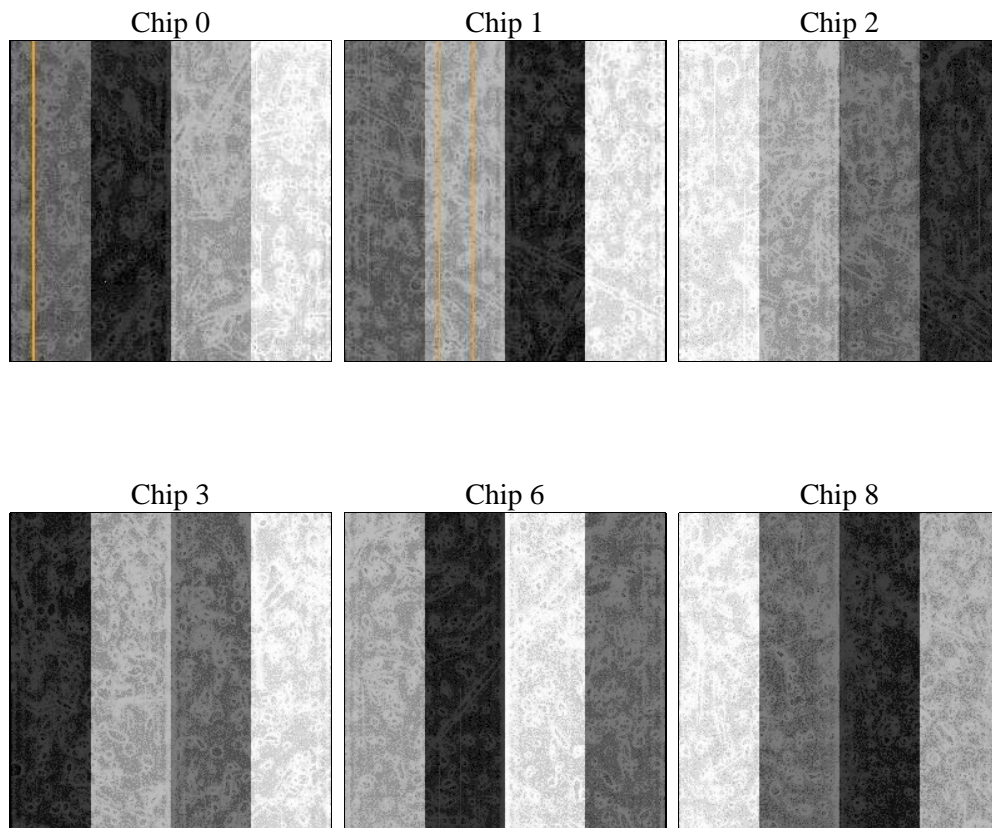
2 OBI

2.1 OBI

2.1.1 Images



2.1.2 Bias



2.1.3 Parameters

obi_num	0	Obi number	sched_exp_time	5000.000000	[s] Scheduled observation exposure time
ascdsver	8.4.5	Processing system revision	ontime	4758.4000044167	Sum of GTIs [s]
caldsver	4.5.1.1	 	ontime0	4758.4000044167	Sum of GTIs [s]
date	2012-09-20T12:44:57	Date and time of file creation	ontime1	4758.4000044167	Sum of GTIs [s]
revision	3	Processing version of data	ontime2	4758.4000044167	Sum of GTIs [s]
			ontime3	4758.4000044167	Sum of GTIs [s]
			ontime6	4758.4000044167	Sum of GTIs [s]
			ontime8	4758.4000044167	Sum of GTIs [s]
			l1events	192441	Number of level 1 events

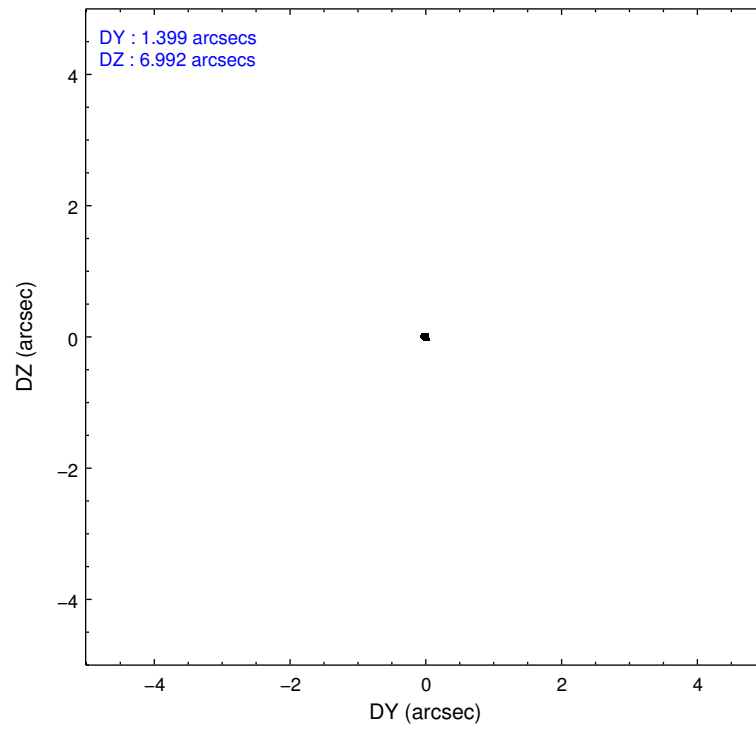
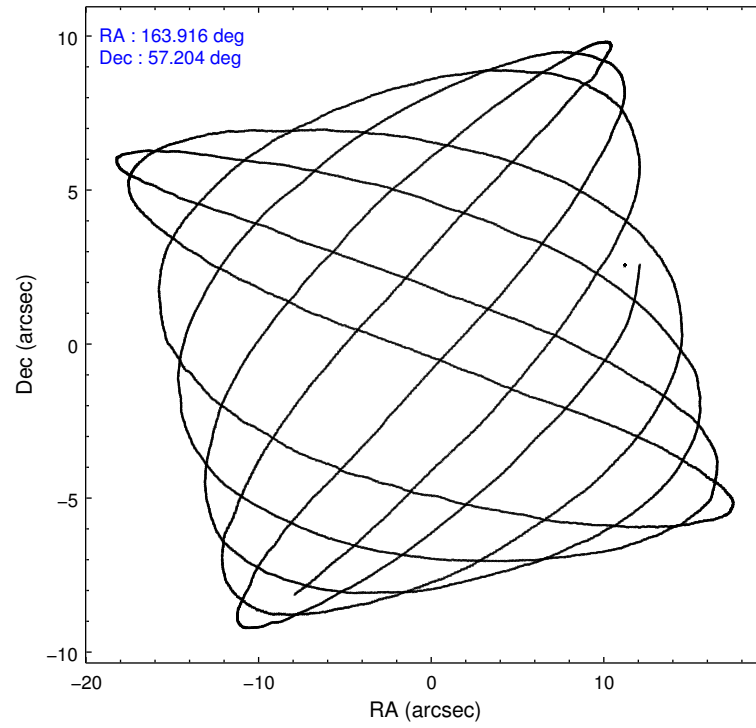
2.1.4 Events

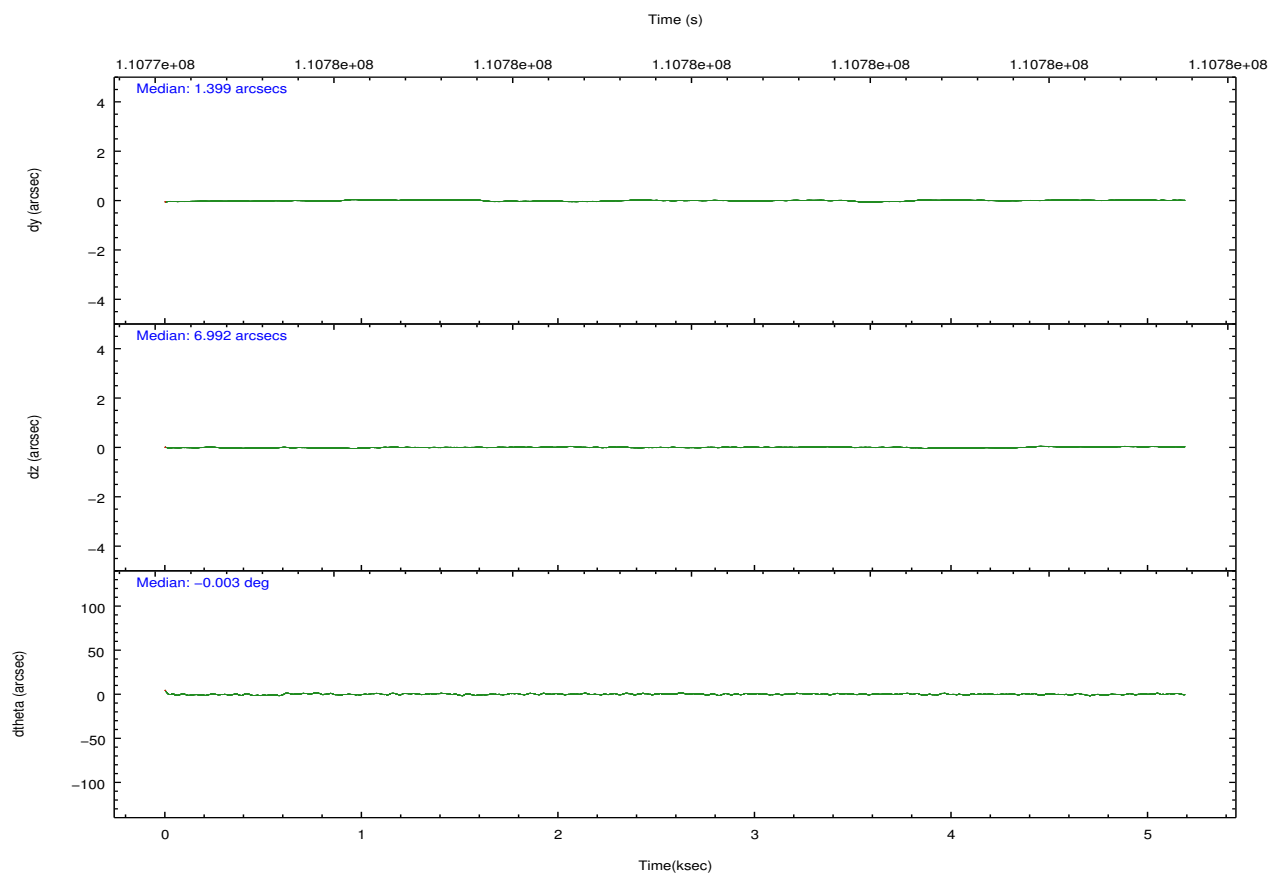
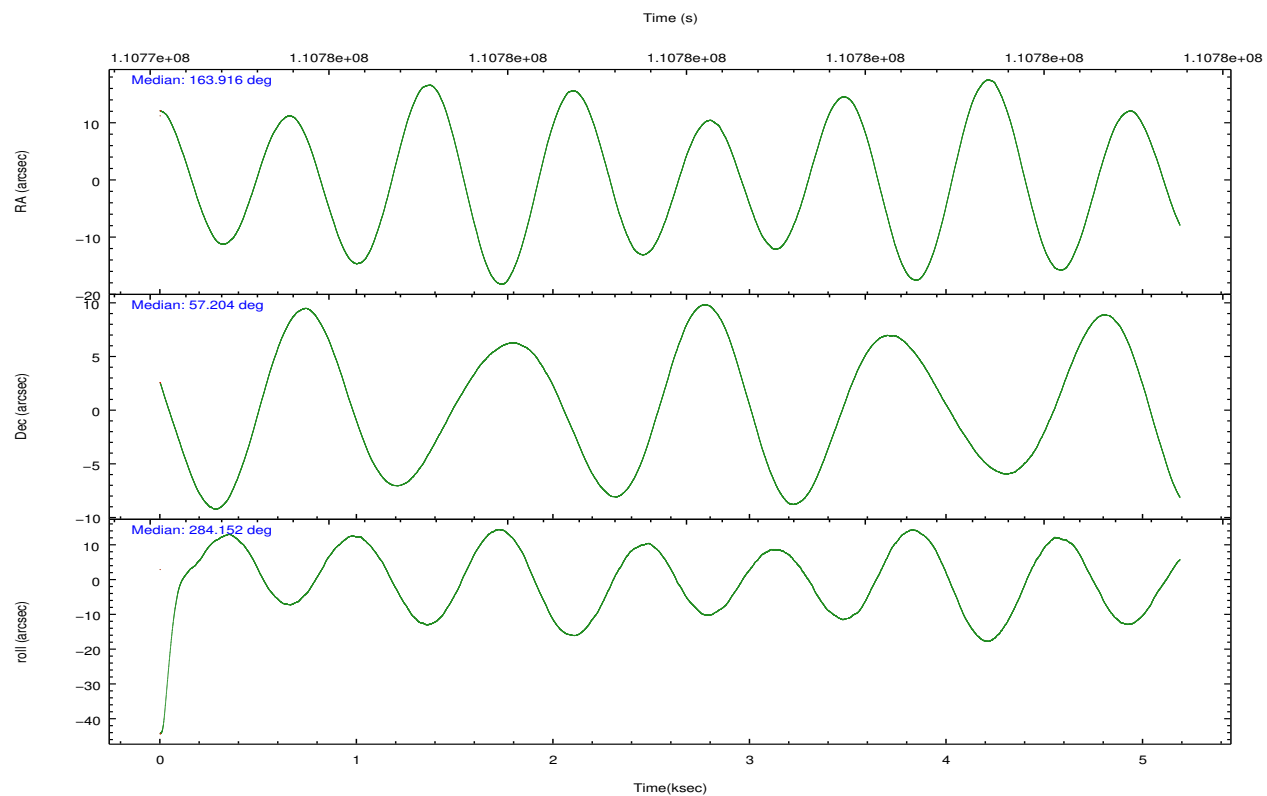
	ccd 0	ccd 1	ccd 2	ccd 3	ccd 6	ccd 8		ccd 0	ccd 1	ccd 2	ccd 3	ccd 6	ccd 8
level 1 events	28116	28429	32165	30879	31418	41434	grade 0 events	1487	1493	1496	1491	1457	2464
rejected events	24500	24731	28698	27404	27885	33618		5%	5%	4%	4%	4%	5%
rejected %	87%	86%	89%	88%	88%	81%	grade 1 events	15	19	13	12	16	31
								0%	0%	0%	0%	0%	0%
							grade 2 events	812	752	749	708	701	1661
								2%	2%	2%	2%	2%	4%
							grade 3 events	391	395	322	341	367	891
								1%	1%	1%	1%	1%	2%
							grade 4 events	315	372	327	312	345	791
								1%	1%	1%	1%	1%	1%
							grade 5 events	1140	1099	1038	1139	1232	1621
								4%	3%	3%	3%	3%	3%
							grade 6 events	617	695	577	625	668	2015
								2%	2%	1%	2%	2%	4%
							grade 7 events	23339	23604	27643	26251	26632	31960
								83%	83%	85%	85%	84%	77%

2.2 Compared Parameters

Parameter	Planned	Actual	Parameter	Planned	Actual
Instrument	ACIS	ACIS	Obspar format version number	7	7
Detector	ACIS-012368	ACIS-012368	Obspar file type	PREDICTED	ACTUAL
Grating	NONE	NONE	Obspar update status	NONE	UPDATED
Data mode	FAINT	FAINT	Number of optional ACIS chips dropped	0	0
Observation mode	POINTING	POINTING	On-chip summing requested	N	N
[deg] Pointing RA	163.879986	163.9153669742823	Subarray requested	NONE	NONE
[deg] Pointing Dec	57.223867	57.2041755574495	Alternating exposures requested	N	N
[deg] Pointing Roll	283.977435	284.1562687829962	[s] Primary exposure time	0.000000	3.2
[mm] SIM focus pos	-0.782348	-0.7809083437167272			
[mm] SIM defocus	0	0.001439871863259334			
[mm] SIM translation stage pos	-233.592463	-233.5874344608287			
[mm] SIM translation stage offset	0	-0.005018542100998502			
[s] Observation start time (MET)	110774503.184000	110774126.77391			
Observation start date	2001-07-06T02:40:39	2001-07-06T02:35:26			
[s] Observation end time (MET)	110779503.184000	110779637.17413			
Observation end date	2001-07-06T04:03:59	2001-07-06T04:07:17			
Read mode	TIMED	TIMED			

2.3 Aspect



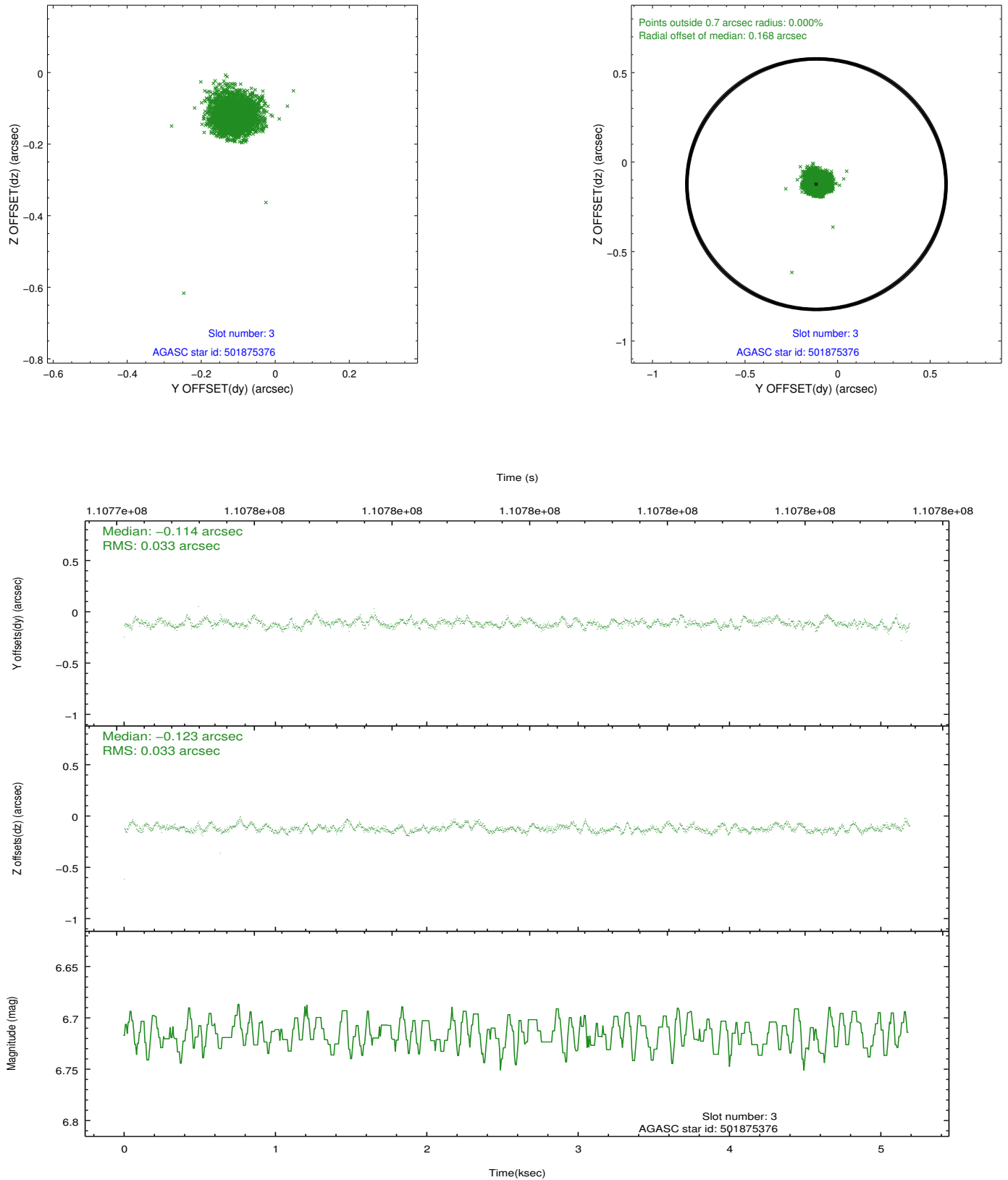


Slot Statistics

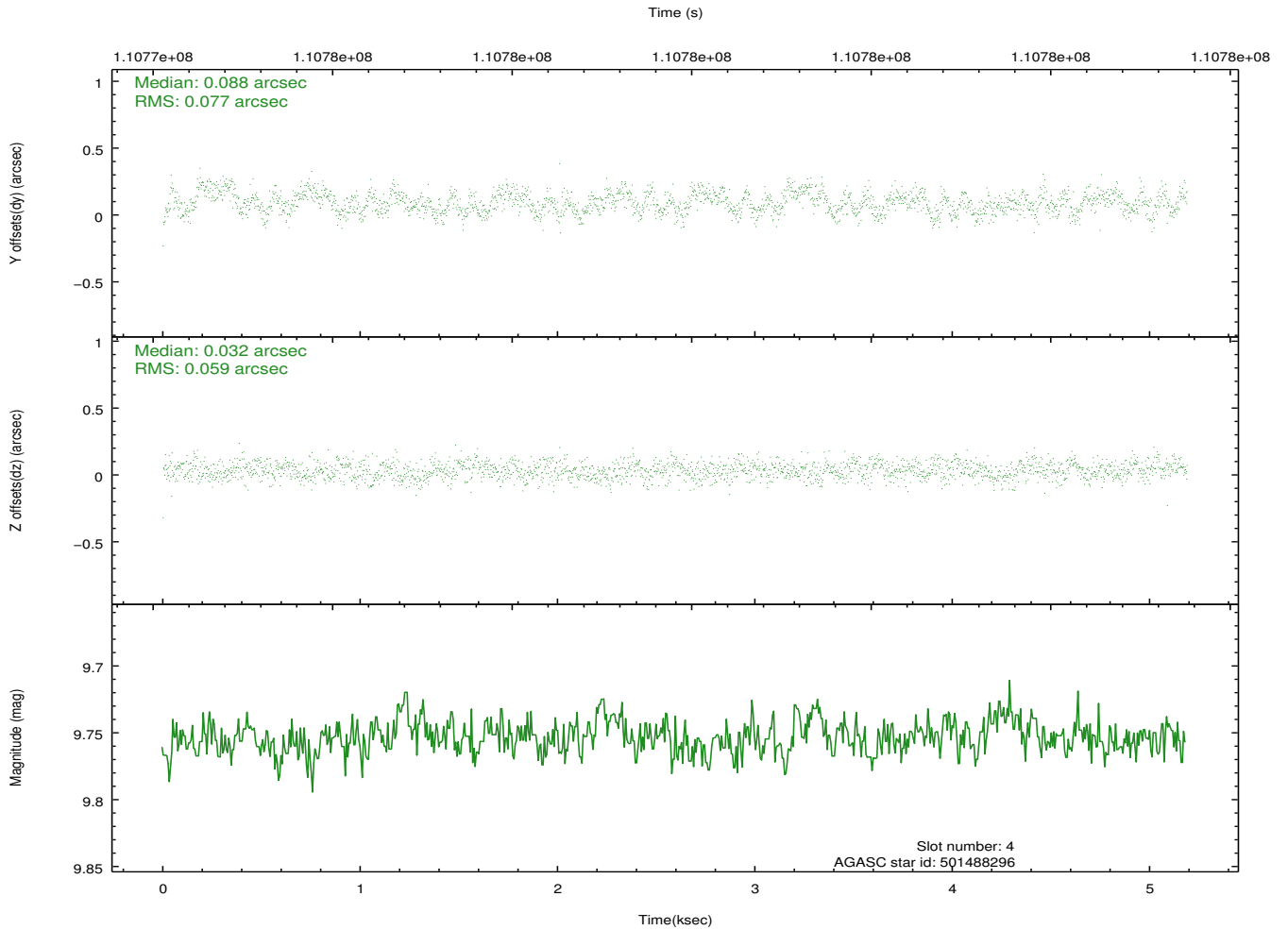
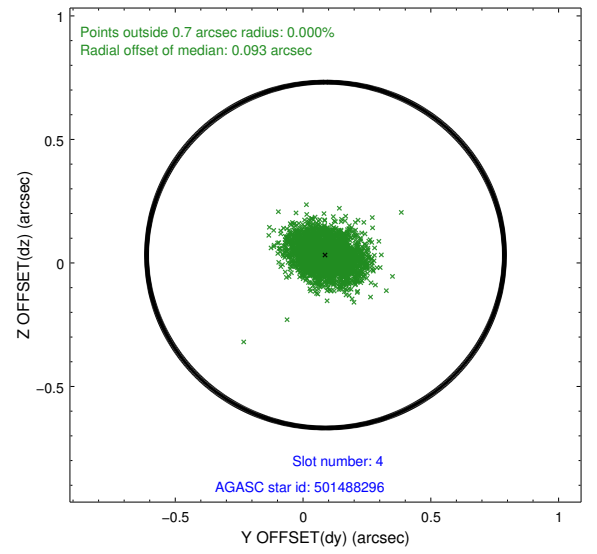
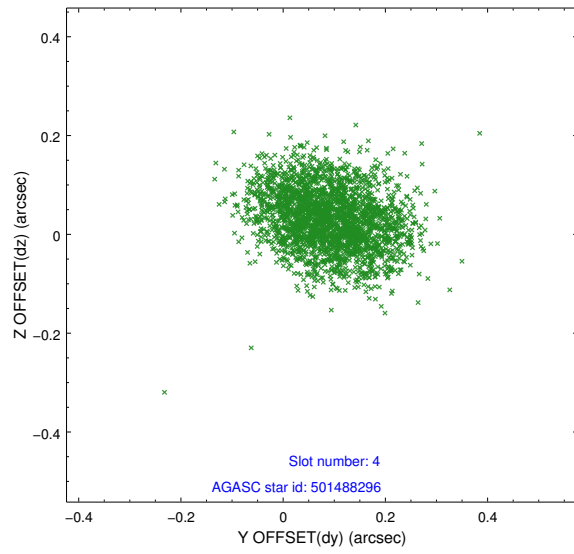
slot	status	id	mag	n_pts	med_dy	med_dz	dr1	dr2	ra	dec	mean_y	mean_z
0	FID	ACIS-I-2	7.16	1266	-0.039	-0.068	0.008	0.015	0.000000	0.000000	-755.76	-836.83
1	FID	ACIS-I-4	7.18	1266	-0.044	0.048	0.006	0.009	0.000000	0.000000	2157.75	1068.91
2	FID	ACIS-I-5	7.23	1266	-0.018	0.088	0.008	0.014	0.000000	0.000000	-1808.08	1068.09
3	GUIDE	501875376	6.72	2532	-0.114	-0.123	0.048	0.078	164.111621	57.502963	-867.33	676.42
4	GUIDE	501488296	9.75	2530	0.088	0.032	0.103	0.164	164.354320	57.421227	-470.50	1063.84
5	GUIDE	501486512	9.61	2532	0.104	0.017	0.093	0.148	163.579075	56.729186	1583.65	-1007.04
6	GUIDE	501619448	9.60	2532	-0.015	-0.005	0.111	0.176	165.050075	56.997105	1328.10	2032.52
7	GUIDE	501877264	9.30	2531	-0.072	0.080	0.077	0.130	163.254394	57.702218	-1966.29	-750.66

2.4 Star Slots

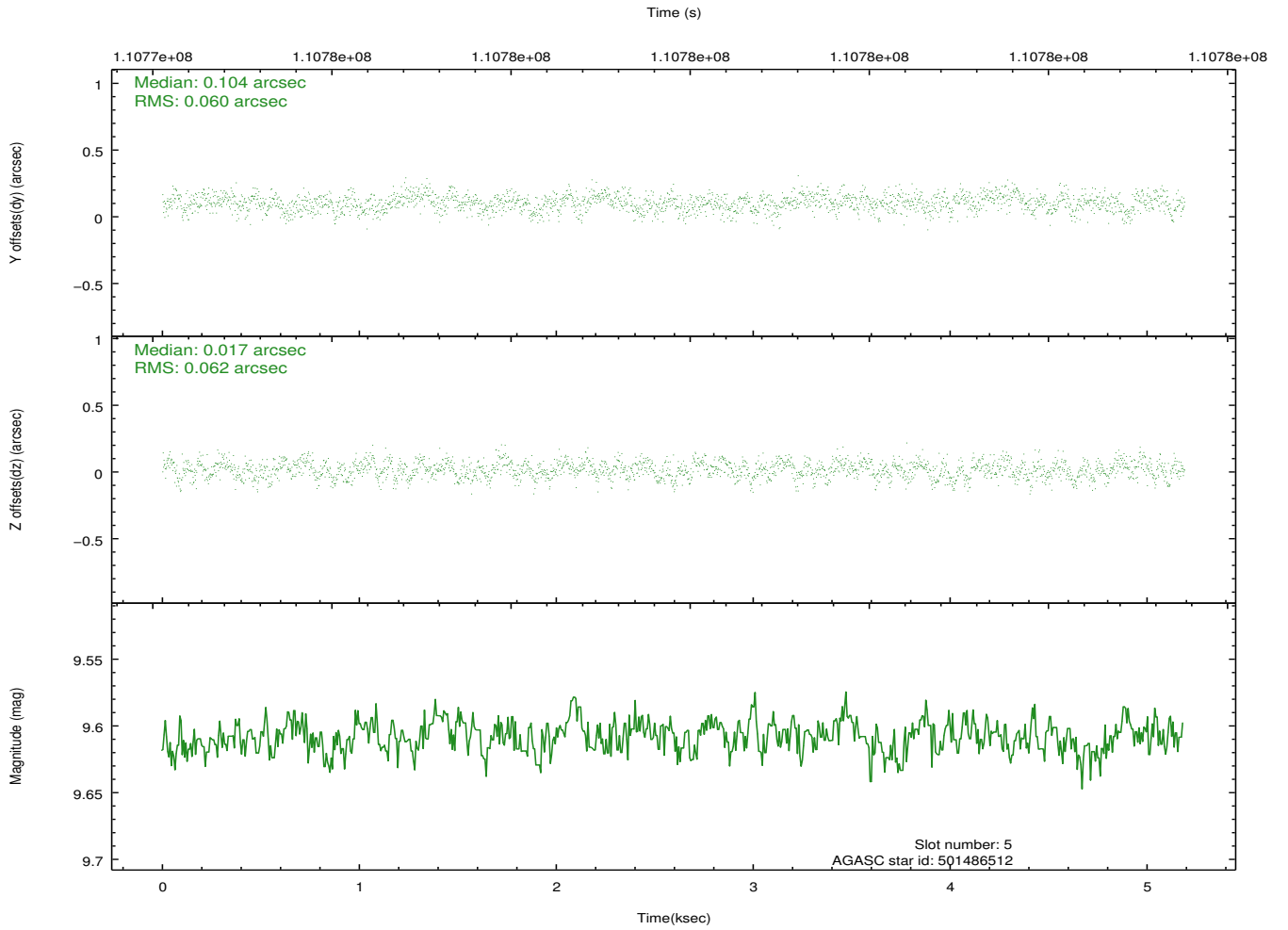
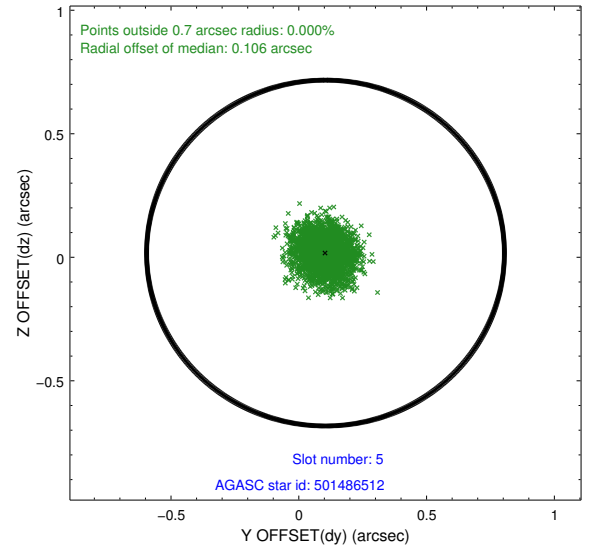
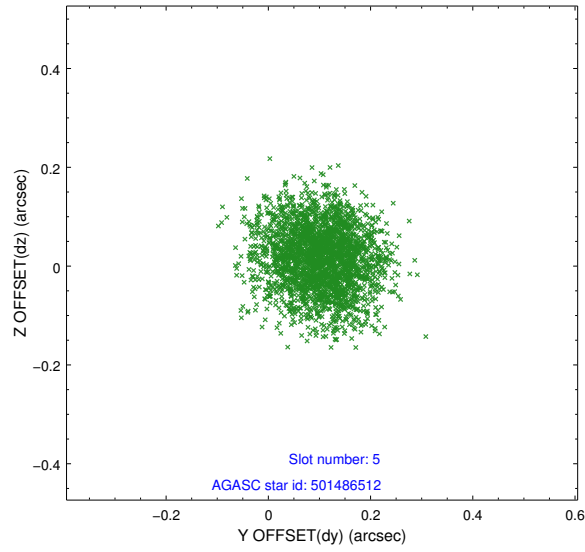
2.4.1 Slot 3



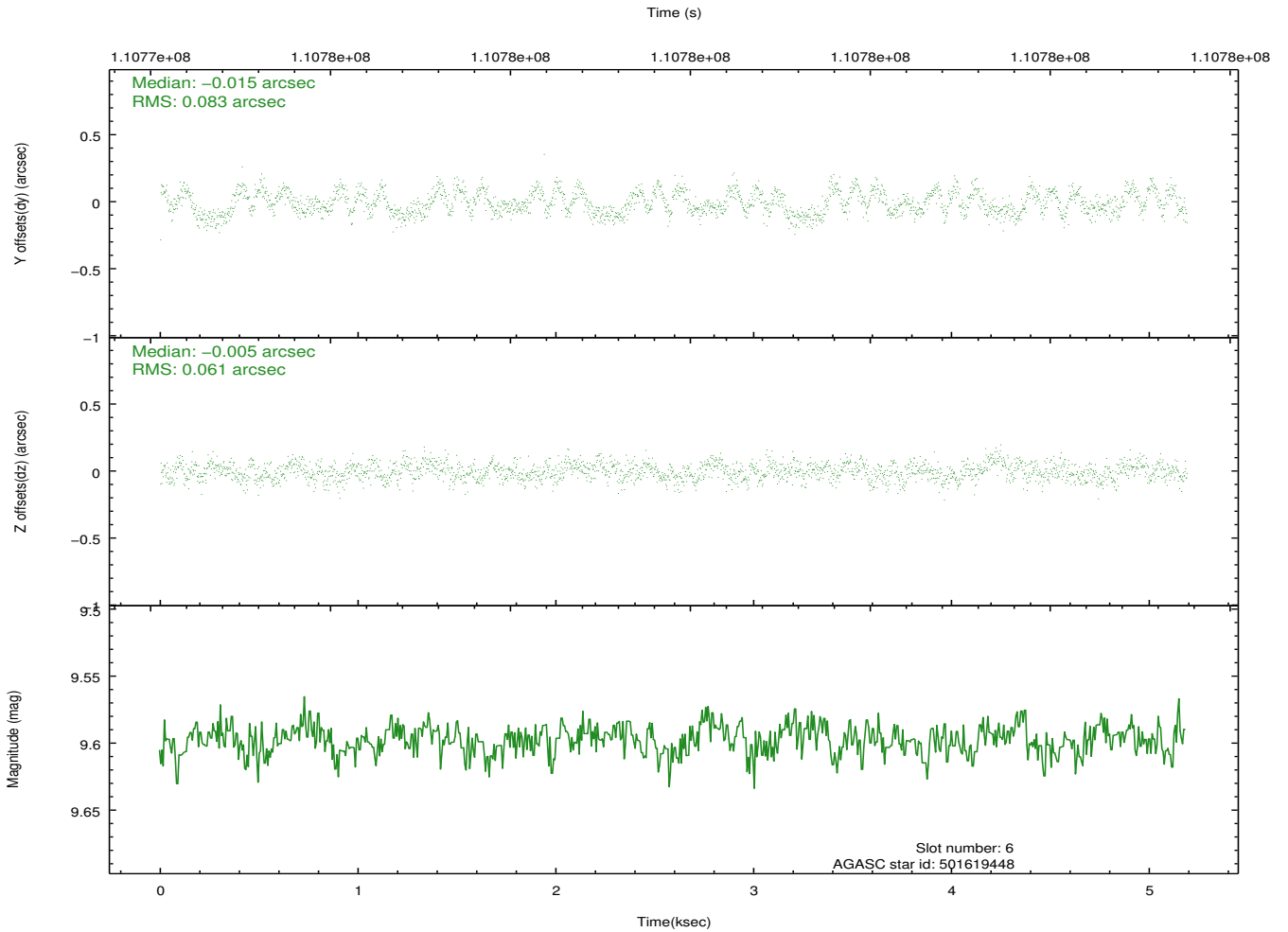
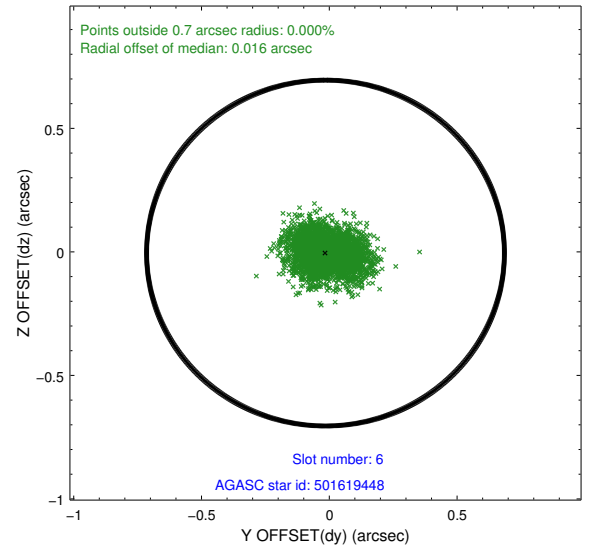
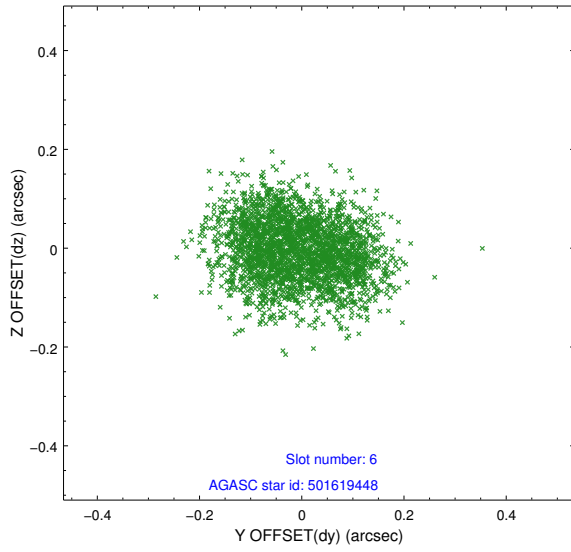
2.4.2 Slot 4



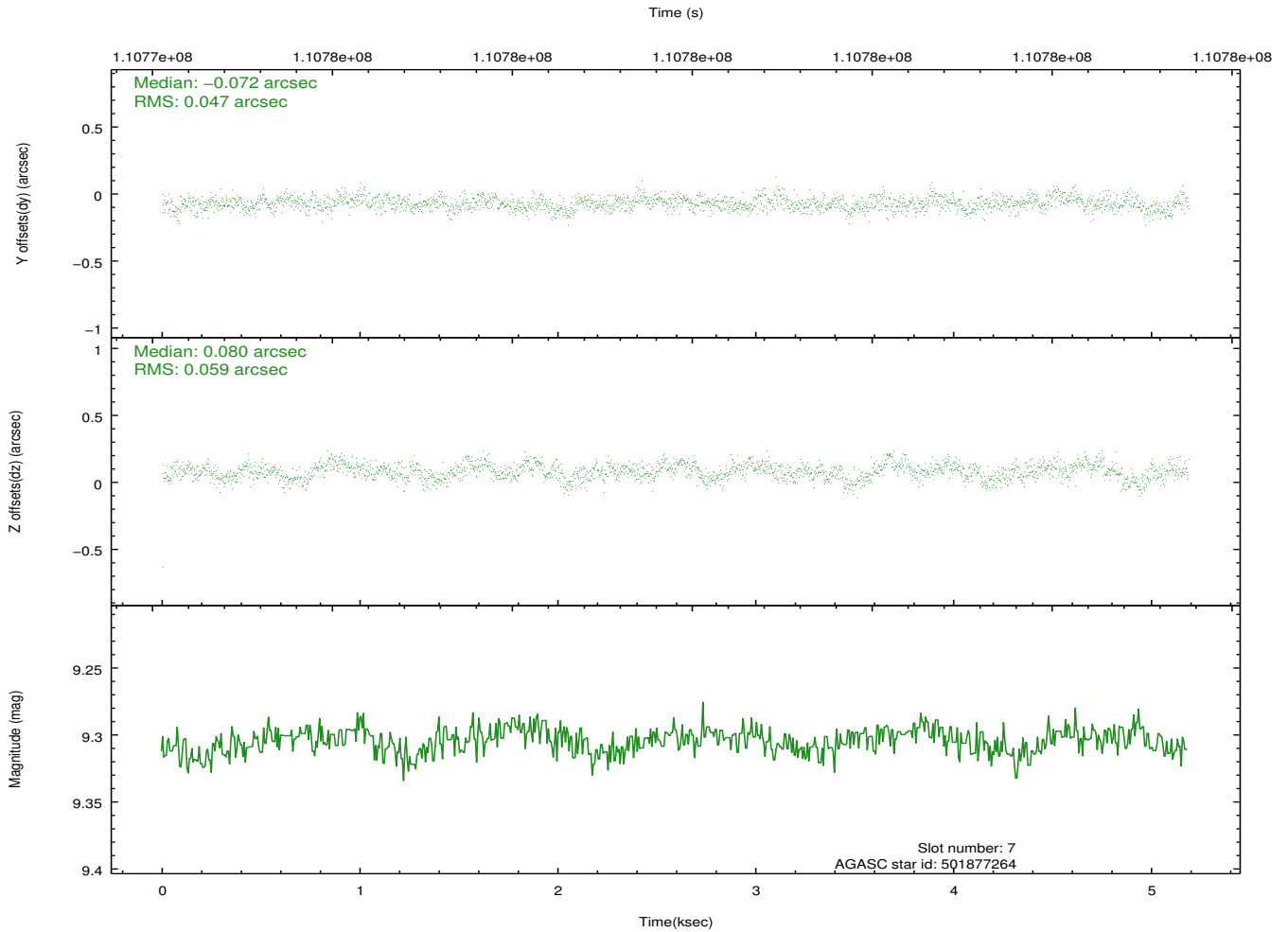
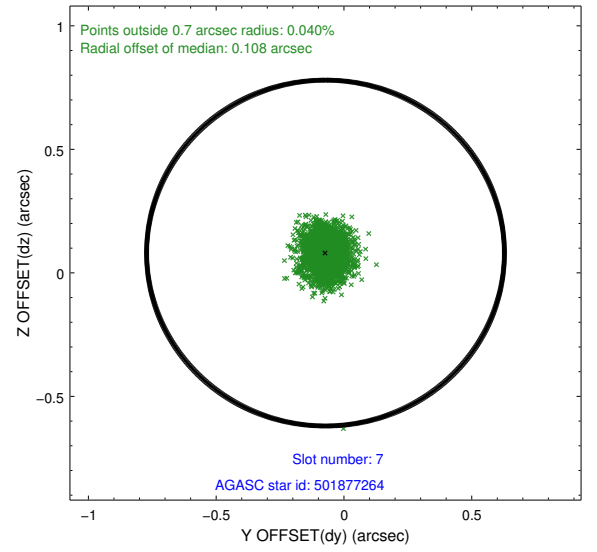
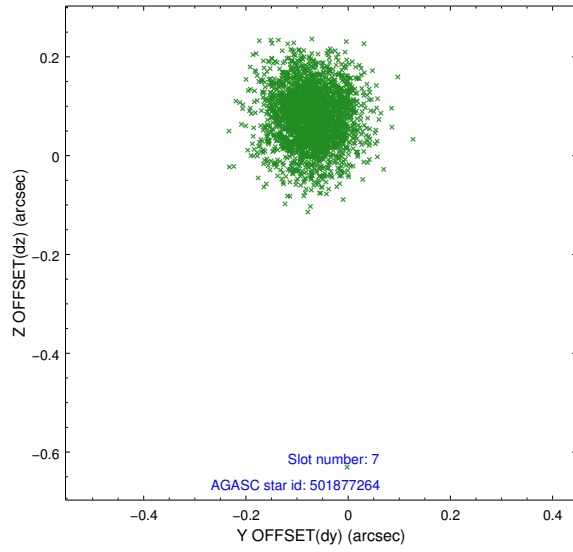
2.4.3 Slot 5



2.4.4 Slot 6

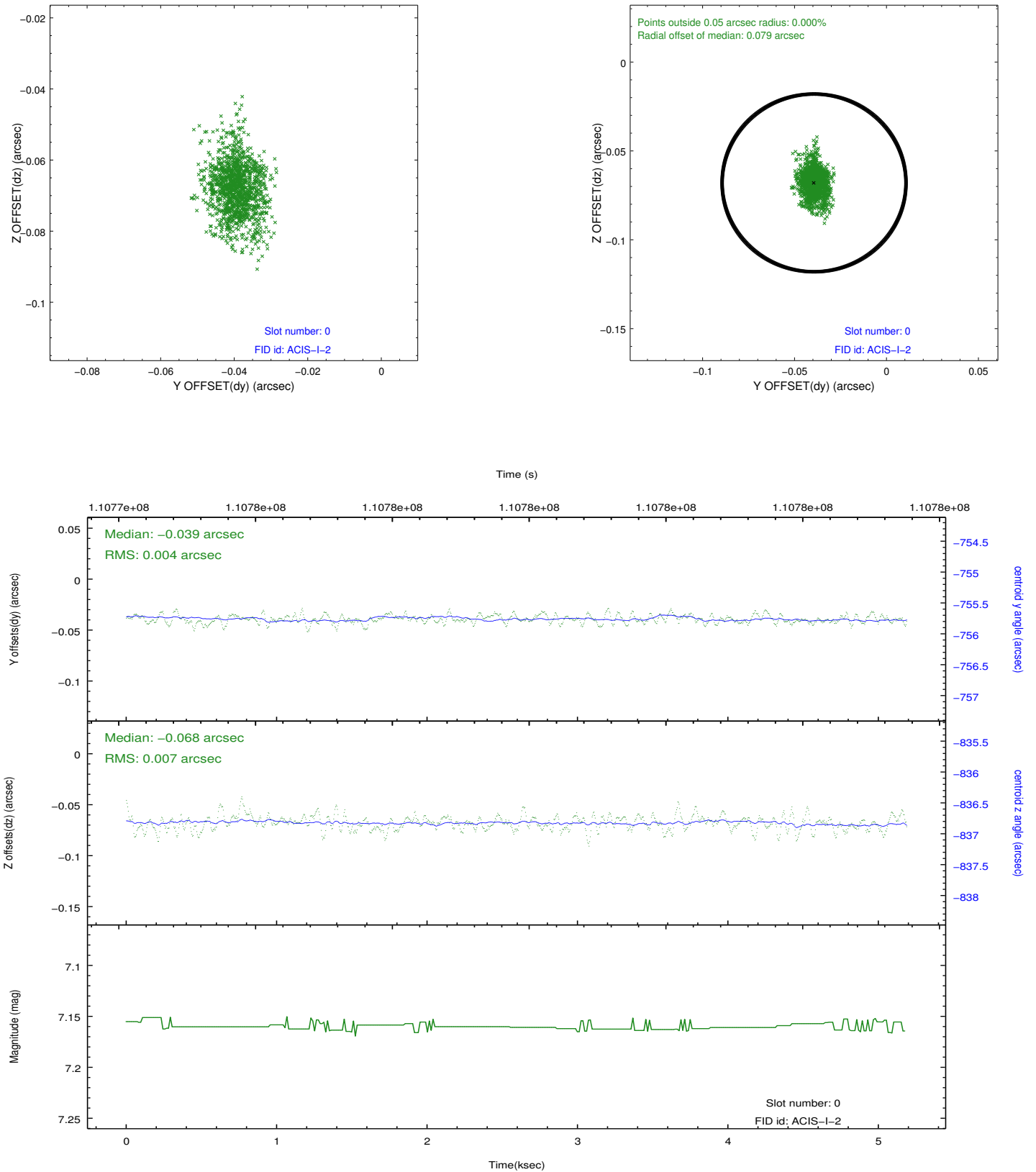


2.4.5 Slot 7

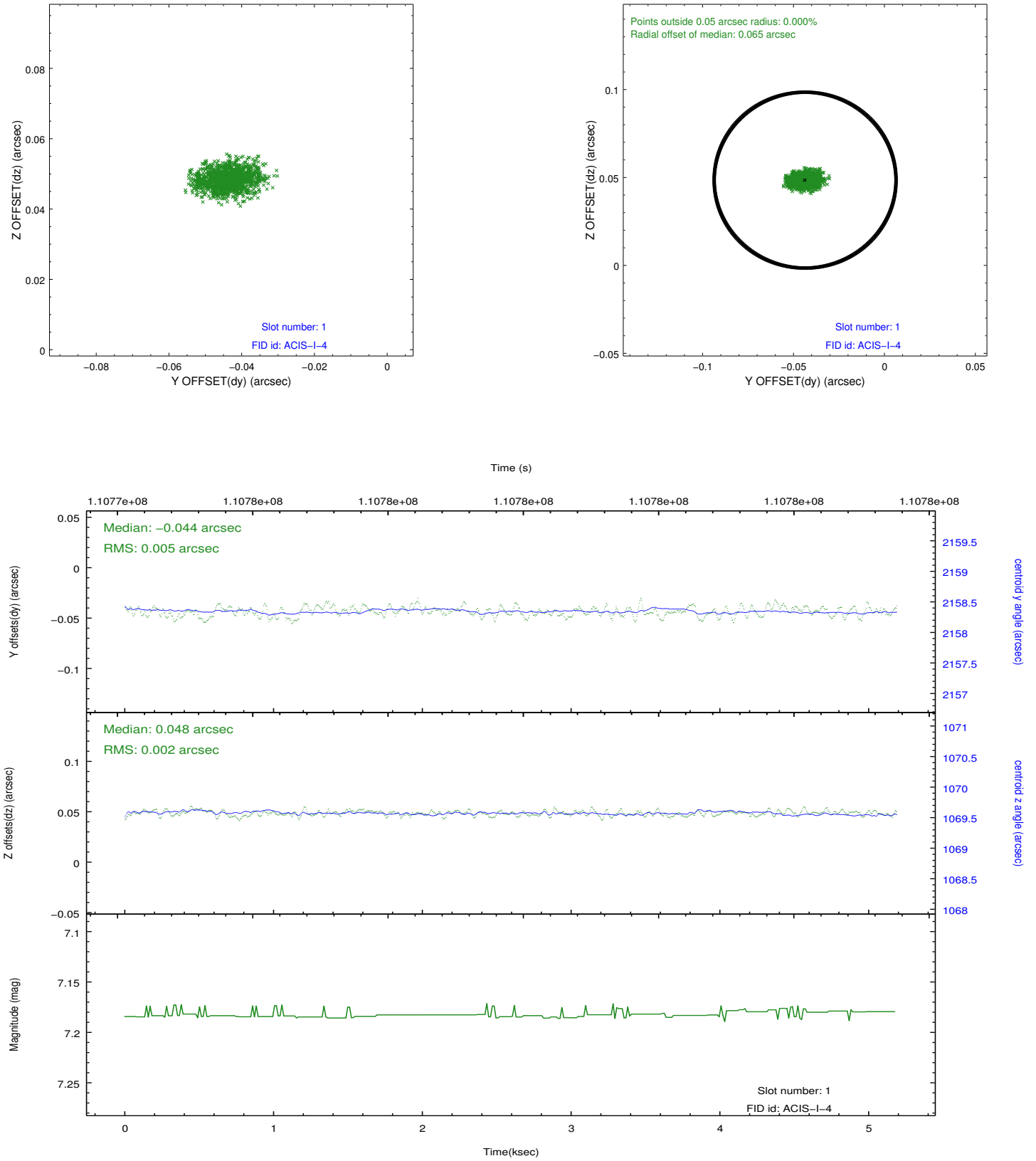


2.5 FID Slots

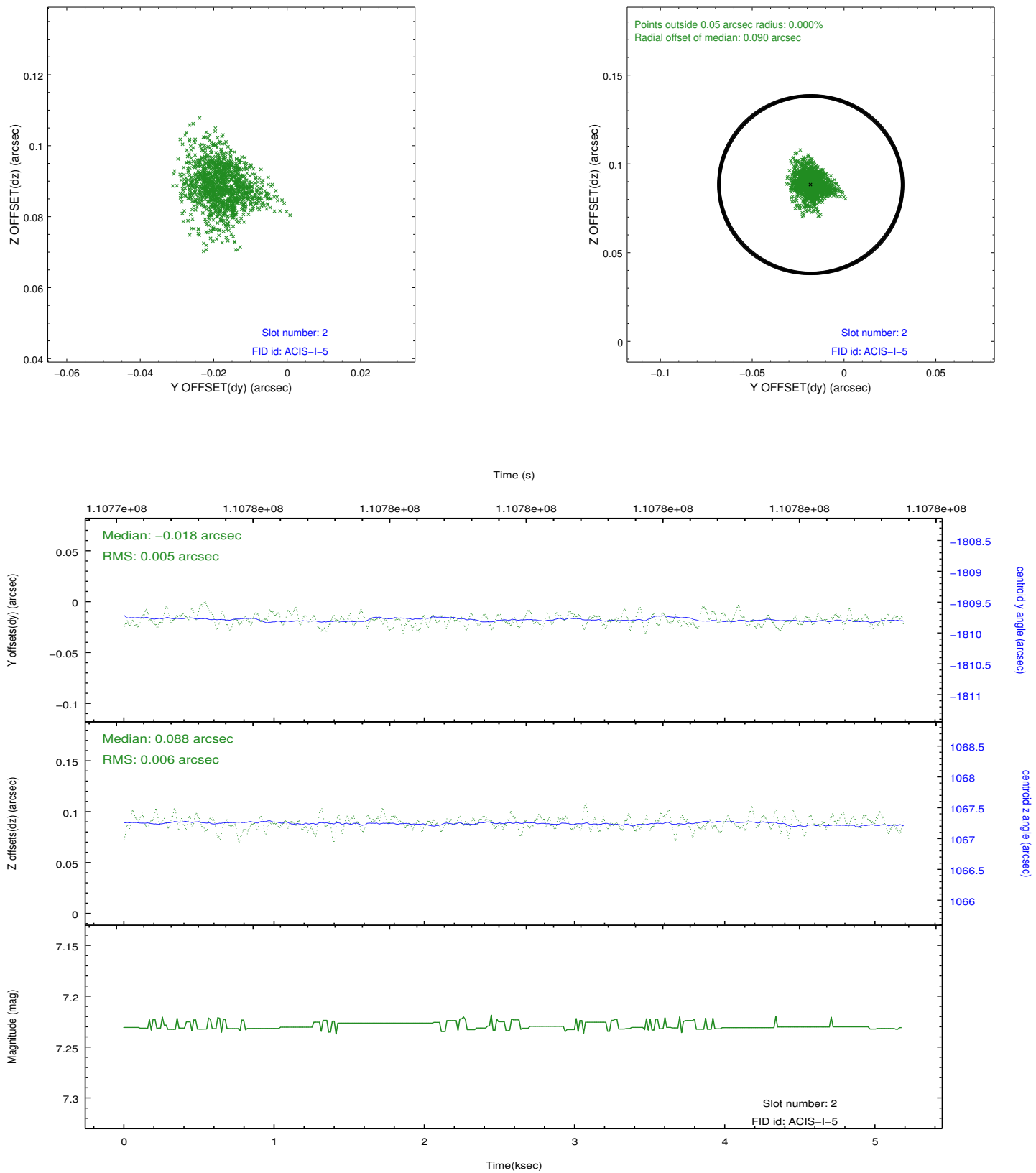
2.5.1 Slot 0



2.5.2 Slot 1



2.5.3 Slot 2



A Summary

A.1 Status

V&V Scientist	Jen Lauer
V&V Date (YYYY-MM-DD)	2012.09.21
V&V Edition	1
V&V Disposition and Status	OK
V&V Charge Time	4.8

A.2 Comments