

V&V Reference Report

L2 ASCDS Version : 7.6.9

Observation 1691 - L2 Version 001
Chandra X-Ray Center

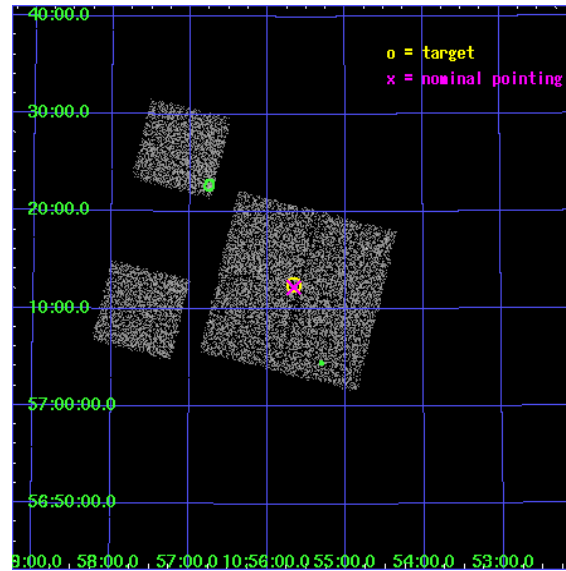
L2 Processing Date : Dec 11 2006

Contents

1	Front	2
2	OBI	3
2.1	OBI	3
2.1.1	Images	3
2.1.2	Bias	3
2.1.3	Parameters	4
2.1.4	Events	4
2.2	Compared Parameters	5
2.3	Aspect	6
2.4	Star Slots	9
2.4.1	Slot 3	9
2.4.2	Slot 4	10
2.4.3	Slot 5	11
2.4.4	Slot 6	12
2.4.5	Slot 7	13
2.5	FID Slots	14
2.5.1	Slot 0	14
2.5.2	Slot 1	15
2.5.3	Slot 2	16
3	Point Sources	17
A	Summary	18
A.1	Status	18
A.2	Comments	18

1 Front

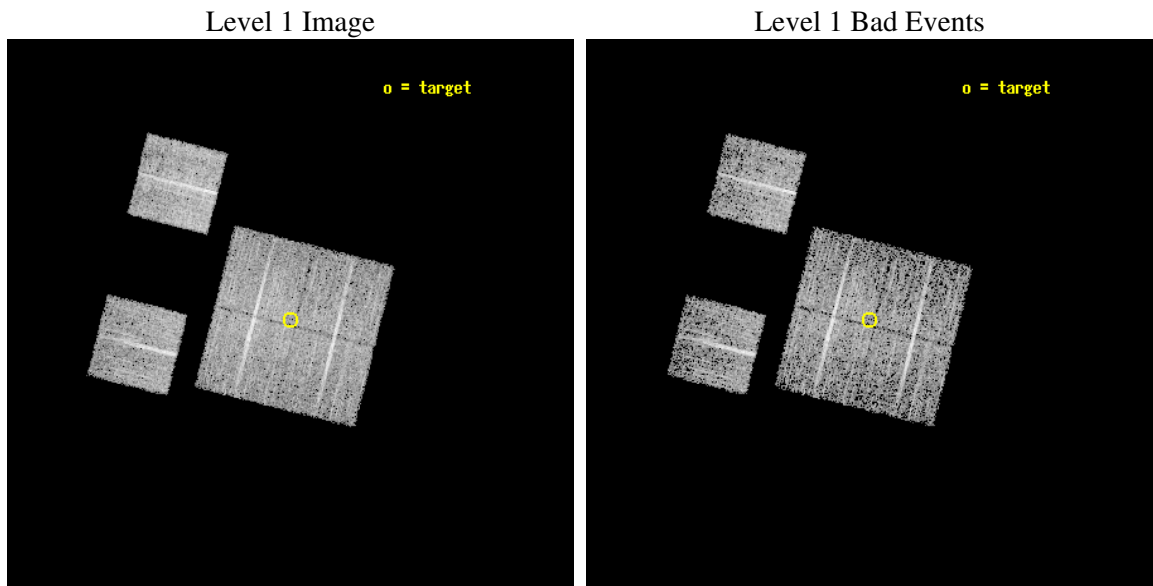
seq_num	900050
obs_id	1691
title	LOCKMAN HOLE SHALLOW SURVEY
observer	Dr. Stephen Murray
object	LOCKMAN HOLE #7
dtcycle	0
cycle	P
ra_targ	163.916667
dec_targ	57.208889
ra_nom	163.91536697428
dec_nom	57.20417555745
roll_nom	284.156268783
revision	2
ontime	4758.4000044316
livetime	4698.146278411
ontime0	4758.4000044316
ontime1	4758.4000044316
ontime2	4758.4000044316
ontime3	4758.4000044316
ontime6	4758.4000044316
ontime8	4758.4000044316
l2events	18588



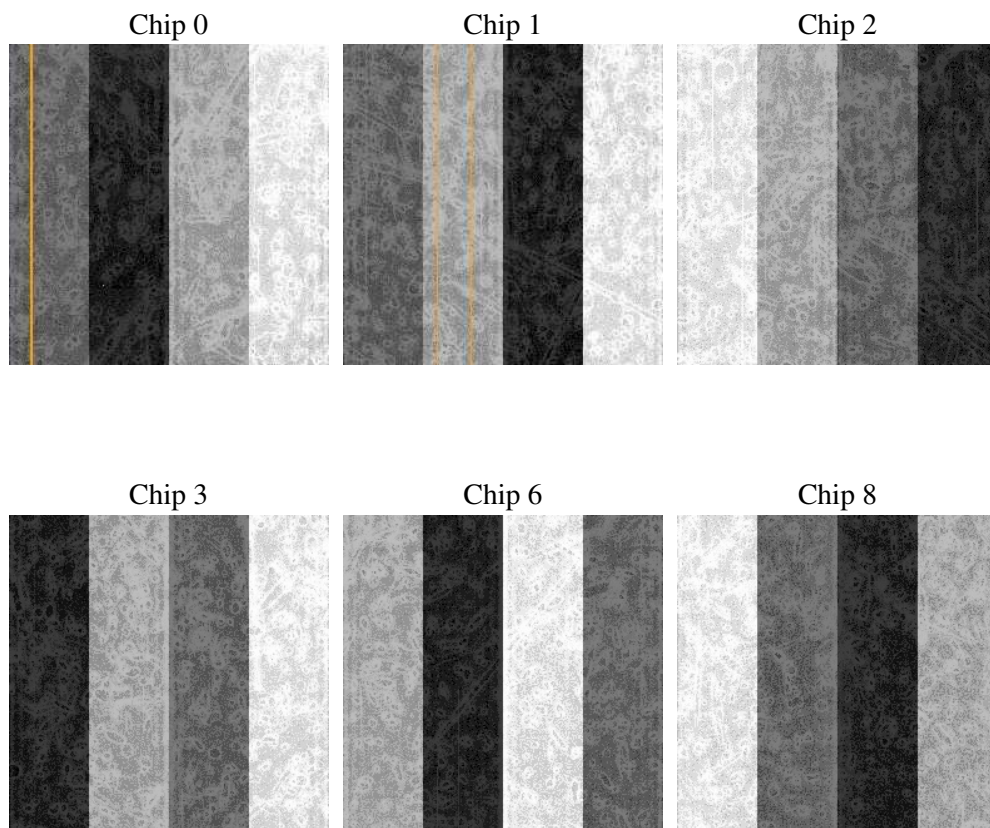
2 OBI

2.1 OBI

2.1.1 Images



2.1.2 Bias



2.1.3 Parameters

obi_num	0
ascdsver	7.6.9
caldsver	3.2.4
date	2006-12-11T18:56:26
revision	2

sched_exp_time	5000.000000
ontime	4764.2656060904
ontime0	4764.2655861676
ontime1	4764.2655861676
ontime2	4764.2655861676
ontime3	4764.2656060904
ontime6	4764.2655861676
ontime8	4764.2656060904
l1events	192441

2.1.4 Events

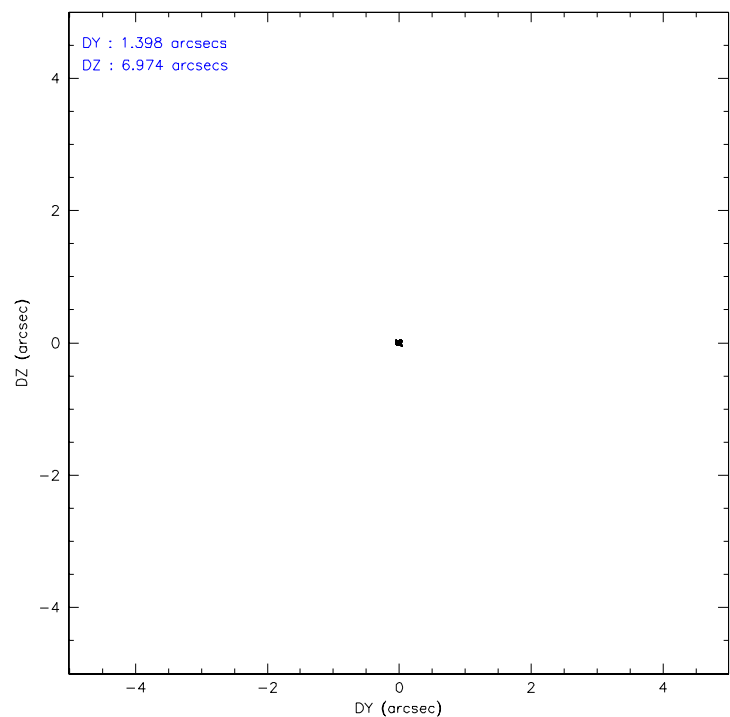
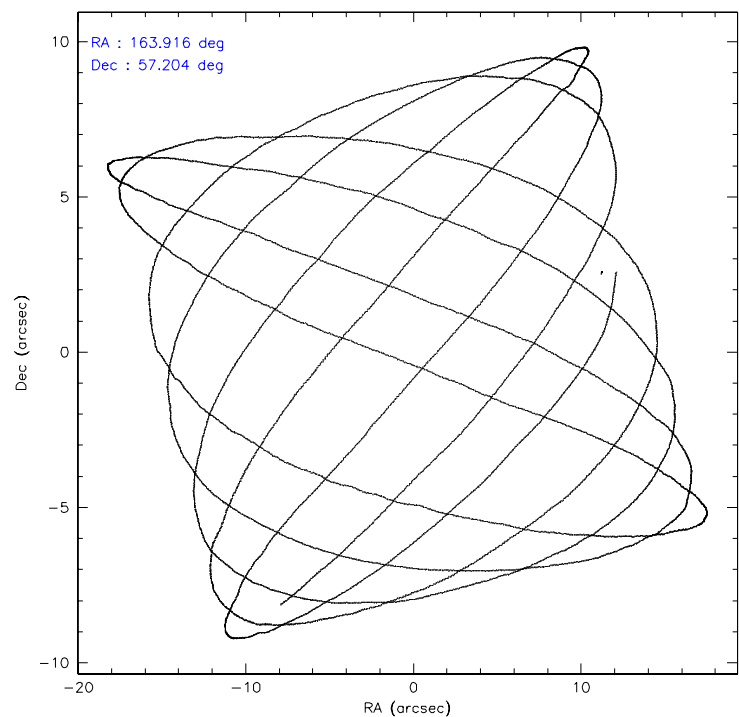
	ccd 0	ccd 1	ccd 2	ccd 3	ccd 6	ccd 8
level 1 events	28116	28429	32165	30879	31418	41434
rejected events	24502	24729	28698	27405	27885	33614
rejected %	87%	86%	89%	88%	88%	81%

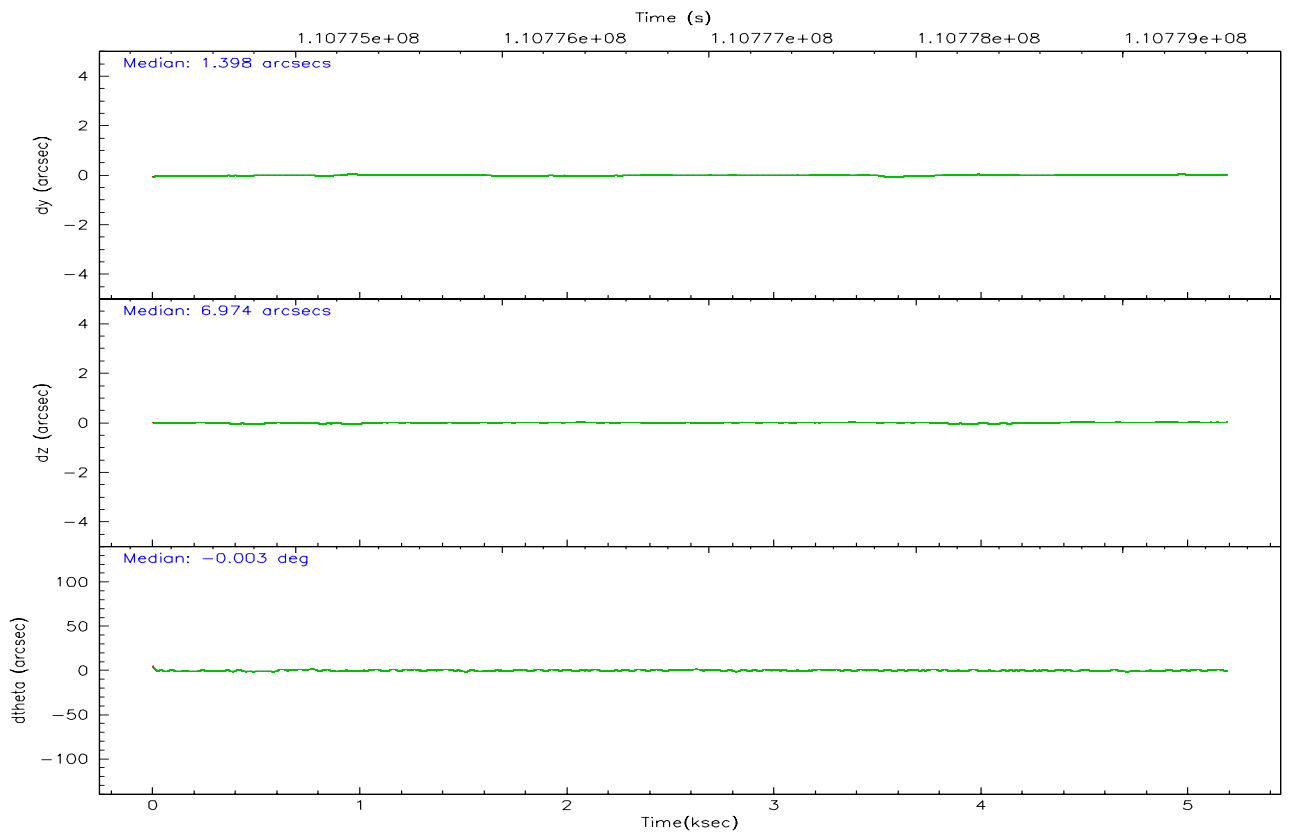
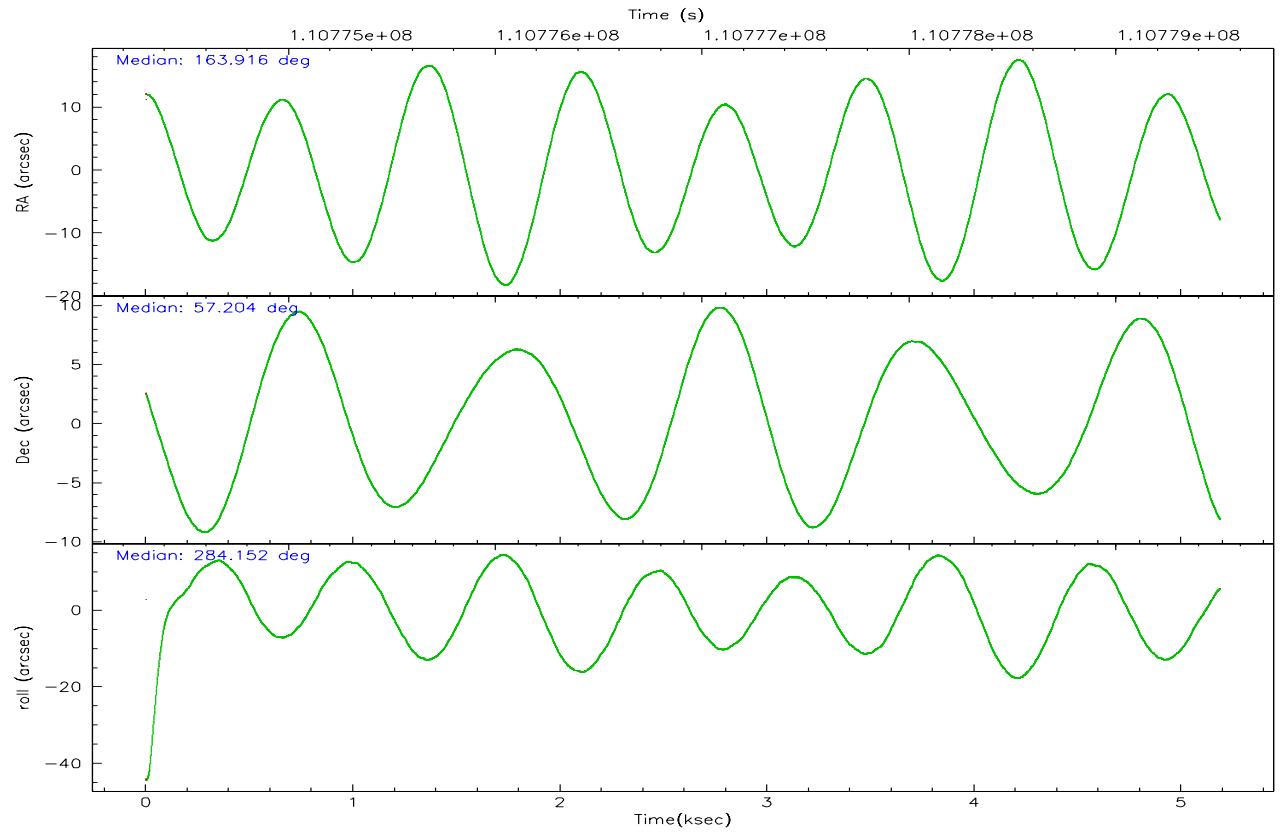
	ccd 0	ccd 1	ccd 2	ccd 3	ccd 6	ccd 8
grade 0 events	1487	1494	1496	1491	1457	2465
	5%	5%	4%	4%	4%	5%
grade 1 events	15	19	13	12	16	31
	0%	0%	0%	0%	0%	0%
grade 2 events	812	751	749	708	701	1660
	2%	2%	2%	2%	2%	4%
grade 3 events	391	395	322	341	367	891
	1%	1%	1%	1%	1%	2%
grade 4 events	315	372	328	312	345	791
	1%	1%	1%	1%	1%	1%
grade 5 events	1140	1100	1038	1140	1233	1621
	4%	3%	3%	3%	3%	3%
grade 6 events	617	694	576	625	668	2015
	2%	2%	1%	2%	2%	4%
grade 7 events	23339	23604	27643	26250	26631	31960
	83%	83%	85%	85%	84%	77%

2.2 Compared Parameters

Parameter	Planned	Actual	Parameter	Planned	Actual
Instrument	ACIS	ACIS	Obspar format version number	6	6
Detector	ACIS-012368	ACIS-012368	Obspar file type	PREDICTED	ACTUAL
Grating	NONE	NONE	Obspar update status	NONE	UPDATED
Data mode	FAINT	FAINT	Number of optional ACIS chips dropped	0	0
Observation mode	POINTING	POINTING	On-chip summing requested	N	N
Pointing RA	163.879986	163.9153669742823	Subarray requested	NONE	NONE
Pointing Dec	57.223867	57.2041755574495	Alternating exposures requested	N	N
Pointing Roll	283.977435	284.1562687829962	Primary exposure time	0.000000	3.2
SIM focus pos (mm)	-0.782348	-0.7809083437167272			
SIM defocus (mm)	0	0.001439871863259334			
SIM translation stage pos (mm)	-233.592463	-233.5874344608287			
SIM translation stage offset (mm)	0	-0.005018542100998502			
Observation start time	110774503.184000	110774126.77391			
Observation start date	2001-07-06T02:40:39	2001-07-06T02:35:26			
Observation end time	110779503.184000	110779637.17413			
Observation end date	2001-07-06T04:03:59	2001-07-06T04:07:17			
Read mode	TIMED	TIMED			

2.3 Aspect



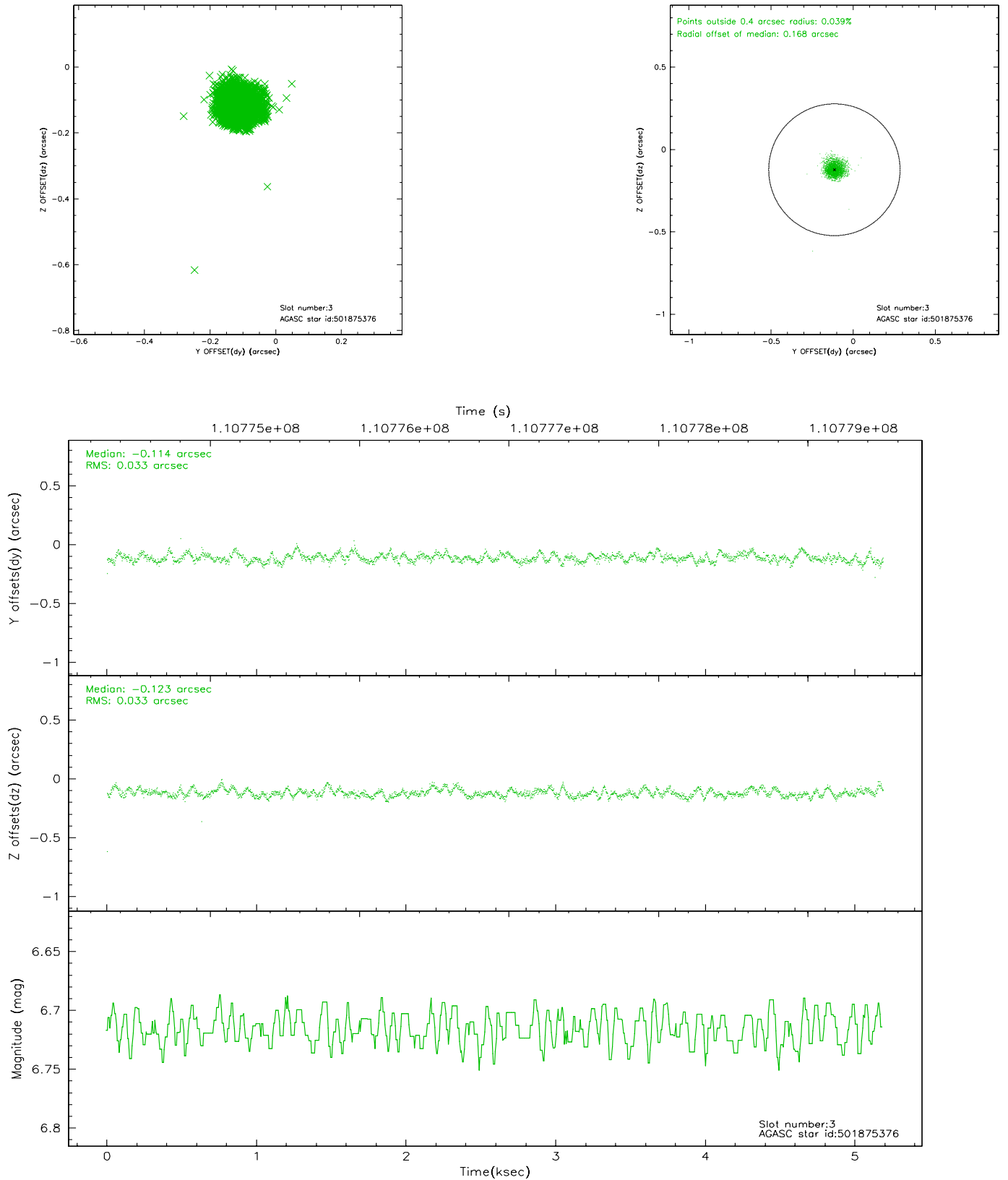


Slot Statistics

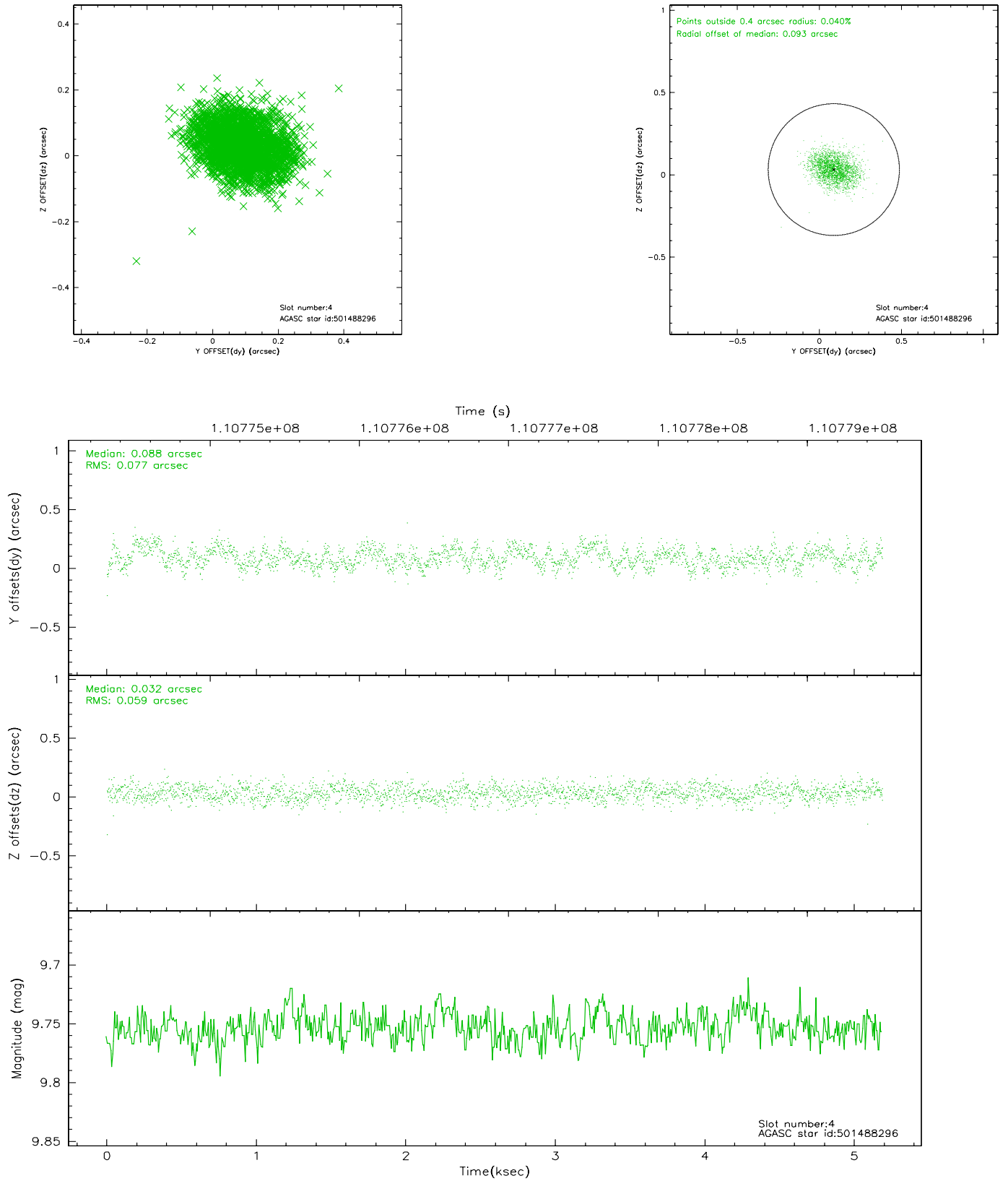
slot	status	id	mag	n_pts	med_dy	med_dz	dr1	dr2	ra	dec	mean_y	mean_z
0	FID	ACIS-I-2	7.16	1266	-0.028	-0.045	0.008	0.015	0.000000	0.000000	-755.75	-836.78
1	FID	ACIS-I-4	7.18	1266	-0.086	0.037	0.005	0.008	0.000000	0.000000	2157.71	1068.92
2	FID	ACIS-I-5	7.23	1266	0.013	0.077	0.008	0.013	0.000000	0.000000	-1808.05	1068.09
3	GUIDE	501875376	6.72	2532	-0.114	-0.123	0.048	0.078	164.111621	57.502963	-867.33	676.42
4	GUIDE	501488296	9.75	2530	0.088	0.032	0.103	0.164	164.354320	57.421227	-470.50	1063.84
5	GUIDE	501486512	9.61	2532	0.104	0.017	0.093	0.148	163.579075	56.729186	1583.65	-1007.04
6	GUIDE	501619448	9.60	2532	-0.015	-0.005	0.111	0.176	165.050075	56.997105	1328.10	2032.52
7	GUIDE	501877264	9.30	2531	-0.072	0.080	0.077	0.130	163.254394	57.702218	-1966.29	-750.66

2.4 Star Slots

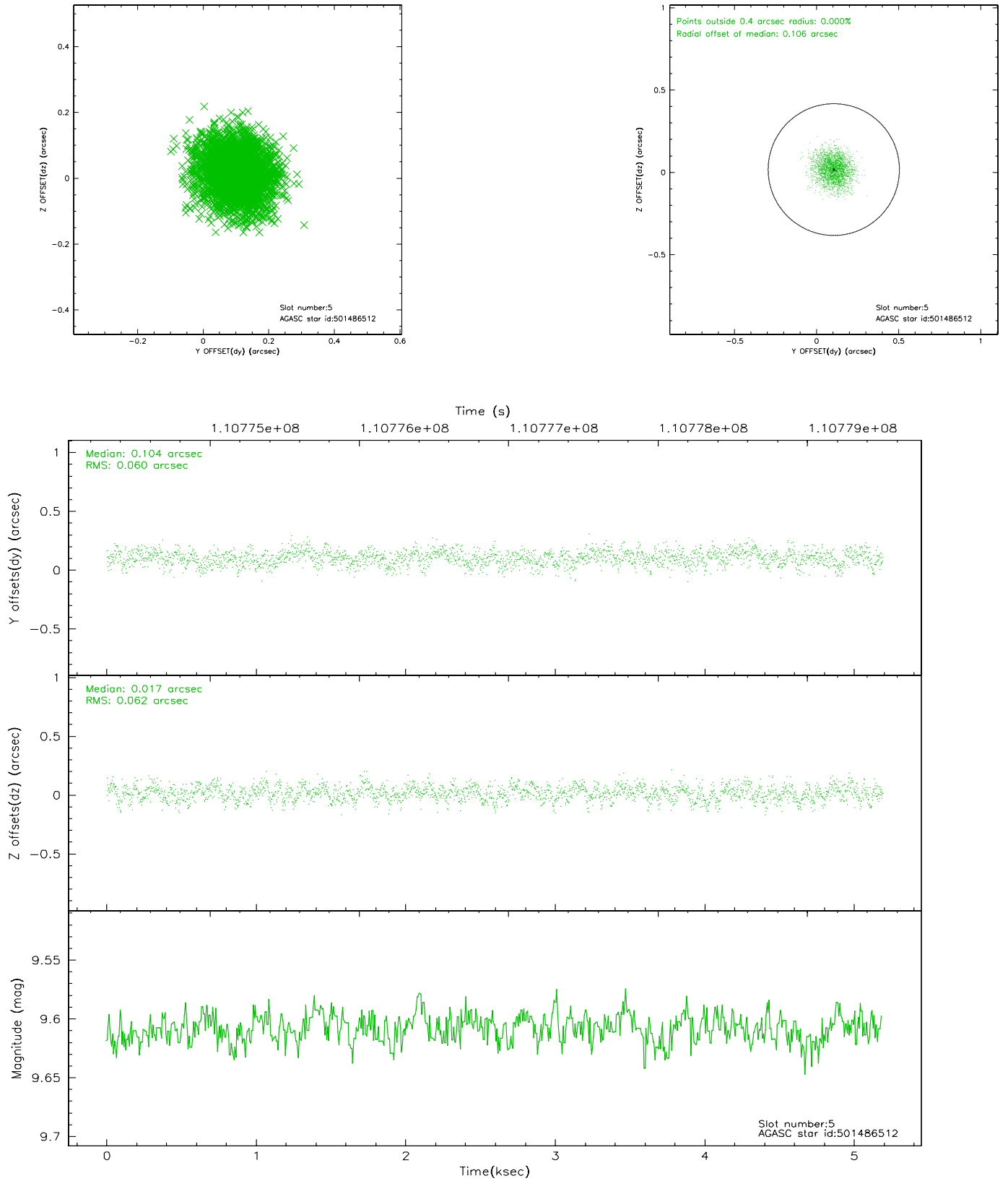
2.4.1 Slot 3



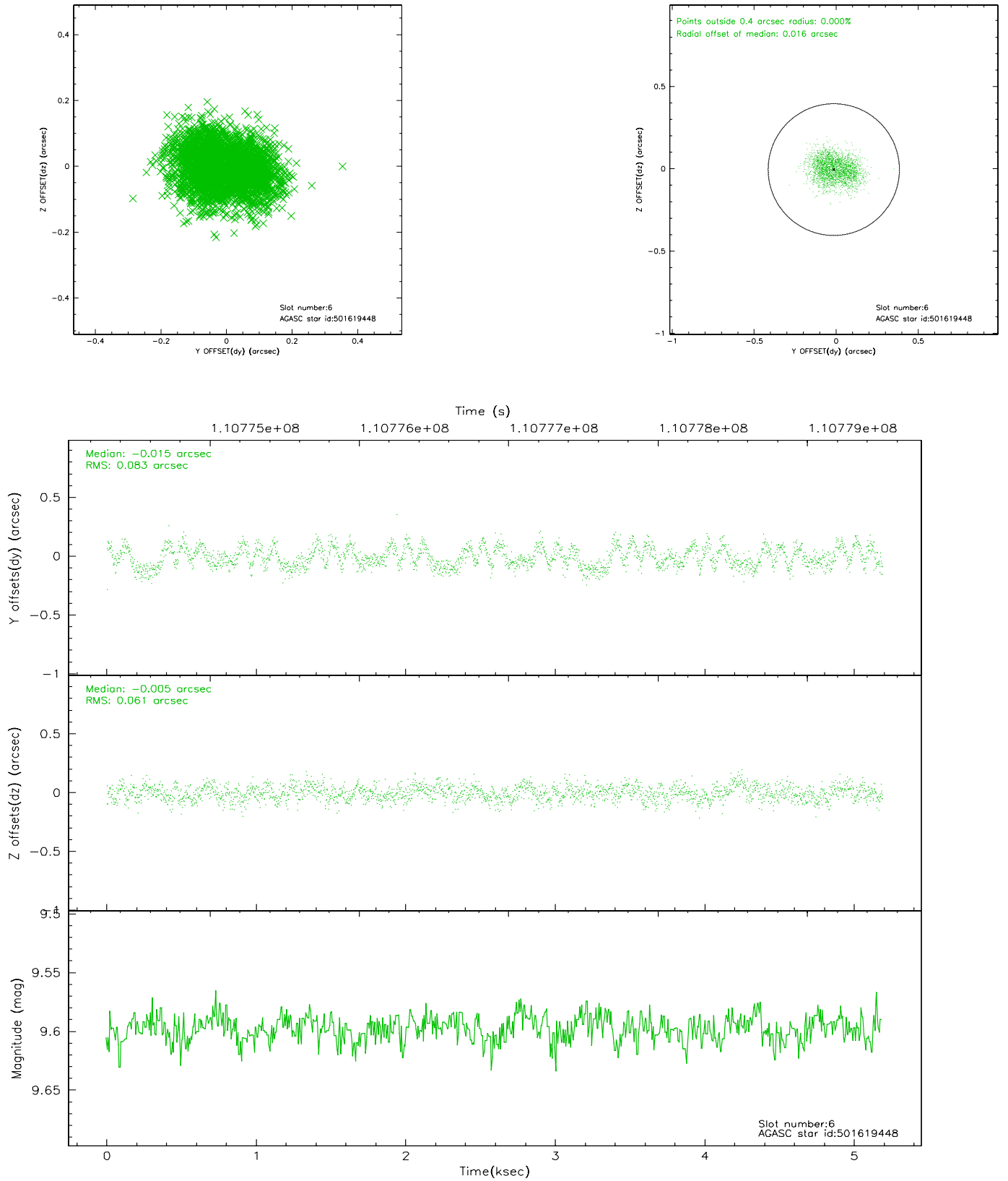
2.4.2 Slot 4



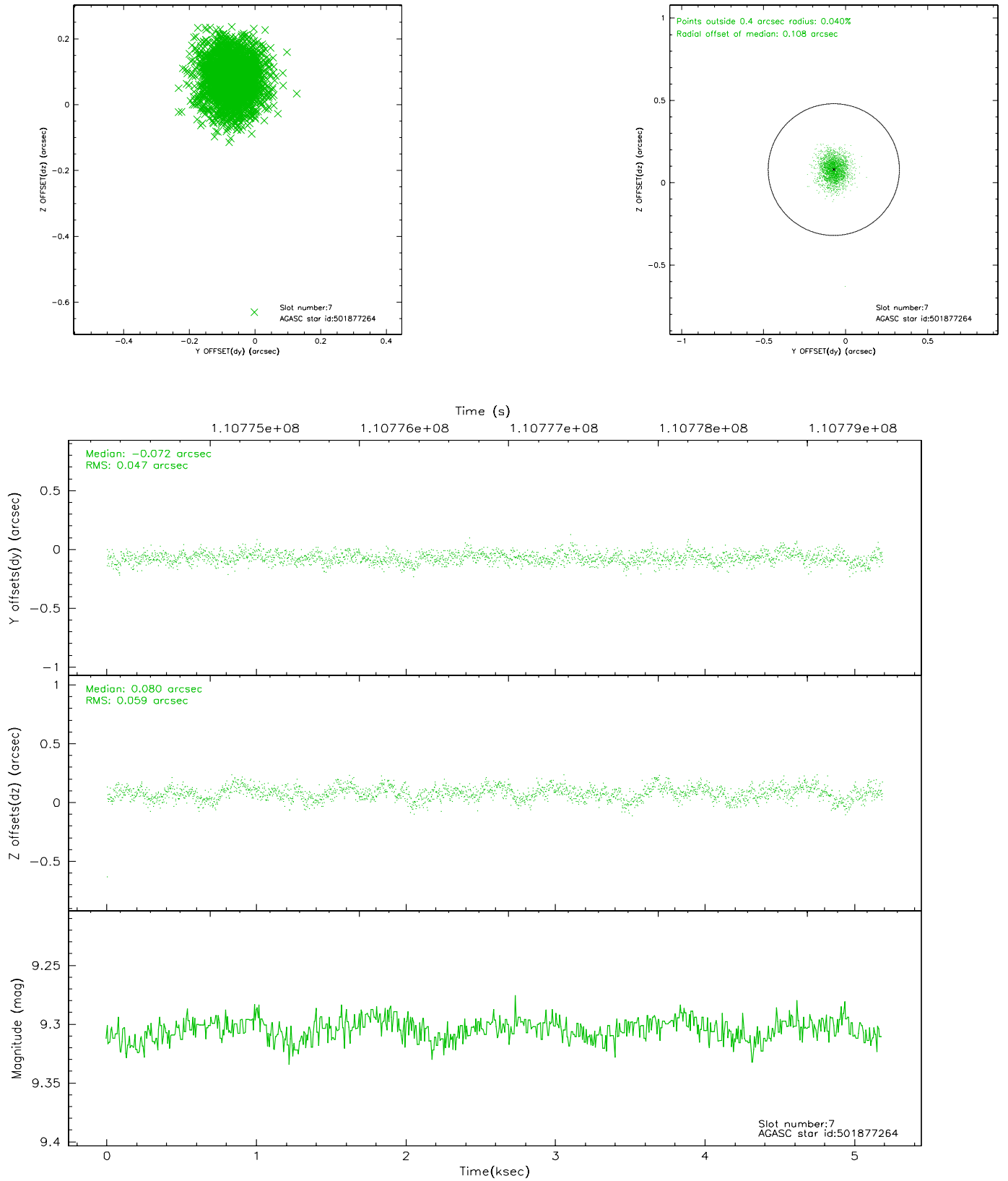
2.4.3 Slot 5



2.4.4 Slot 6

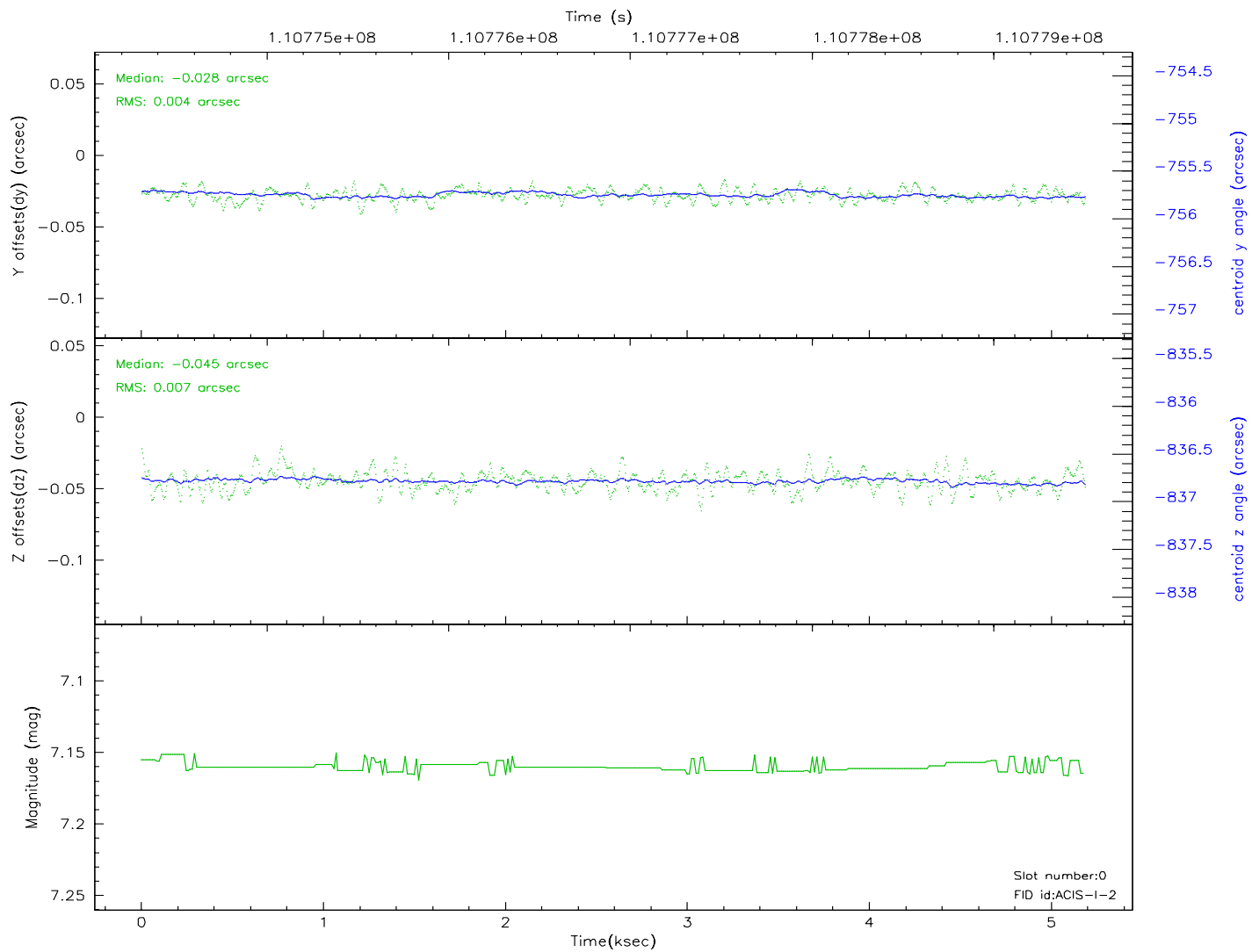
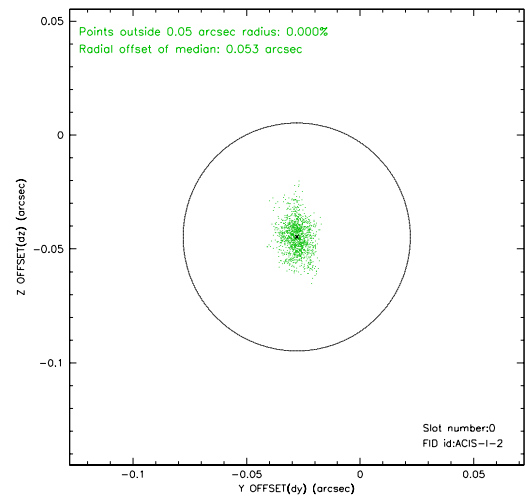
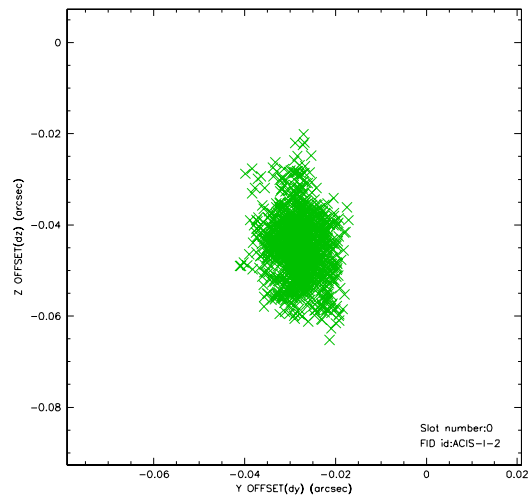


2.4.5 Slot 7

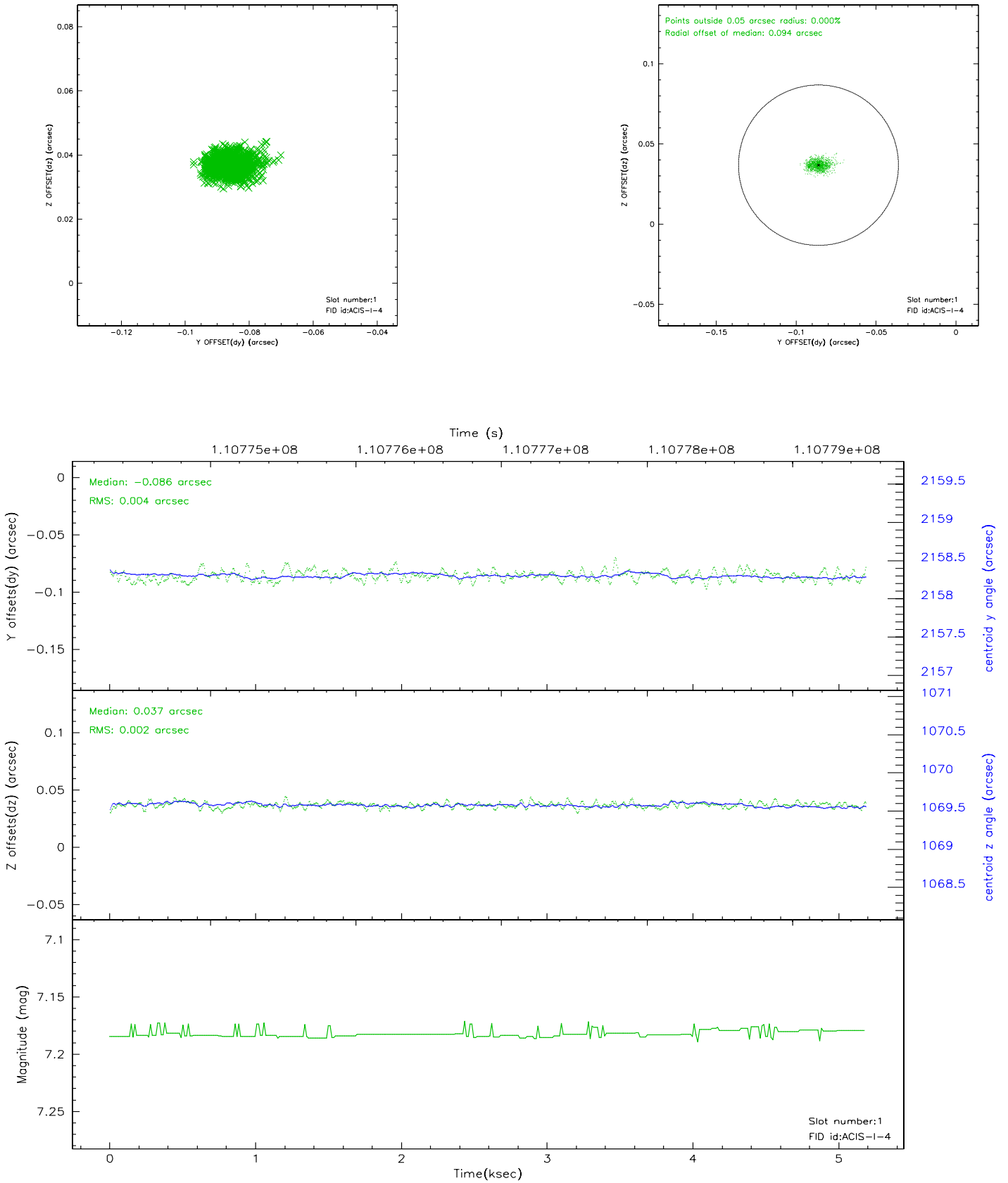


2.5 FID Slots

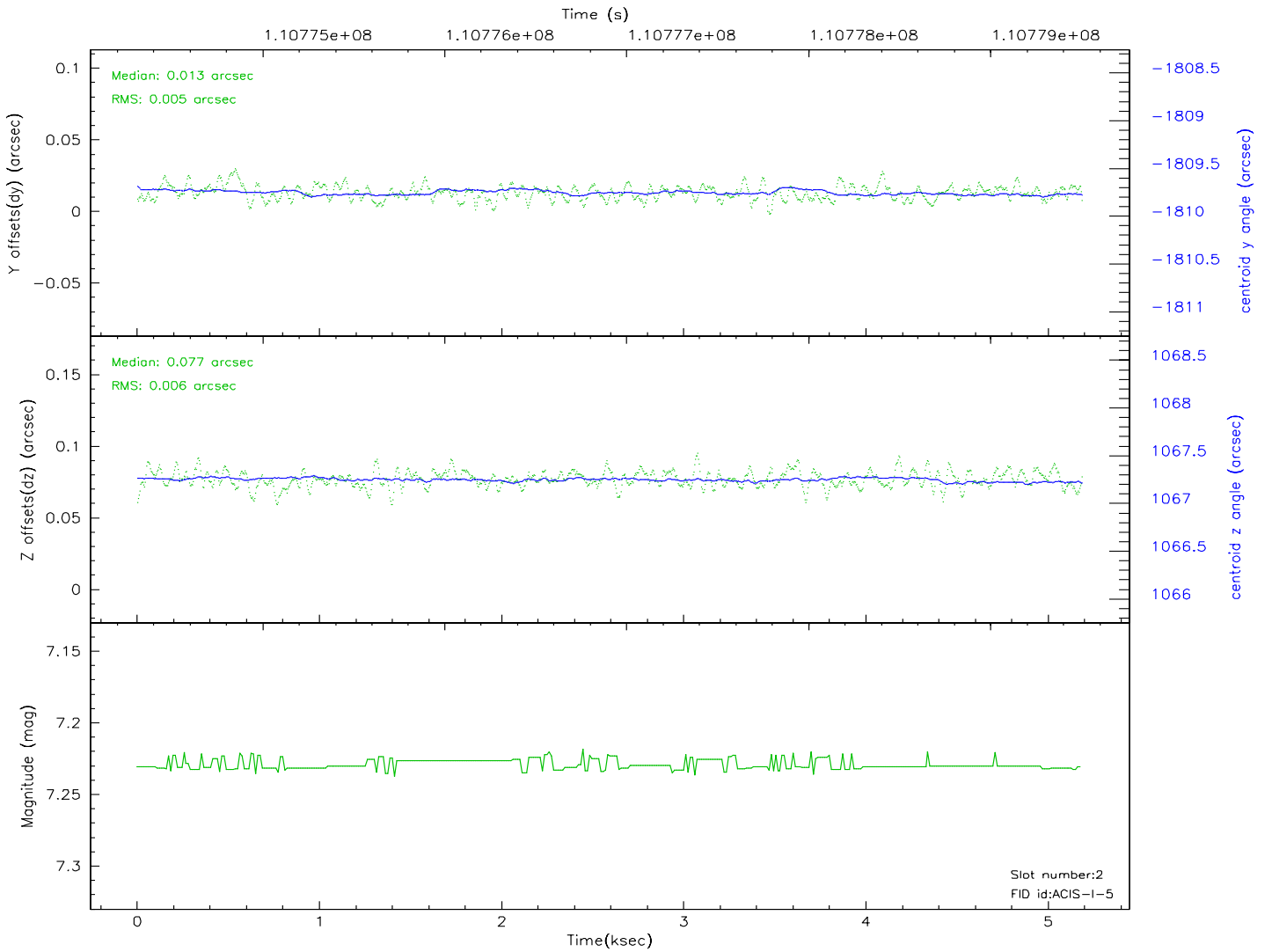
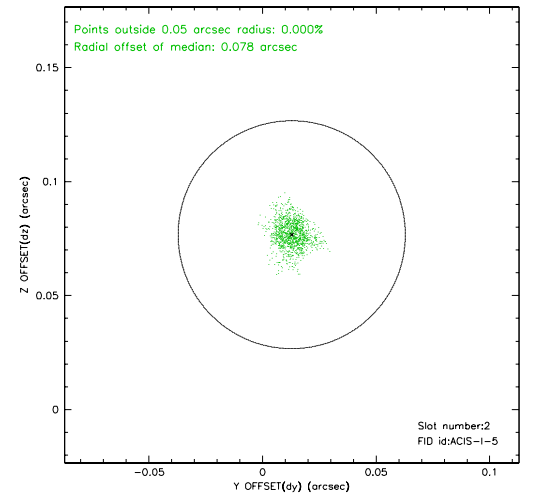
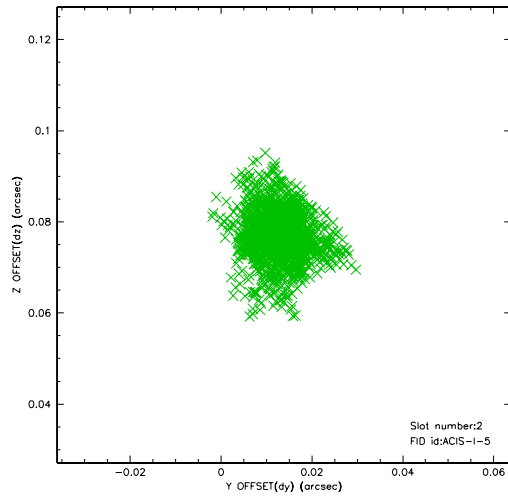
2.5.1 Slot 0



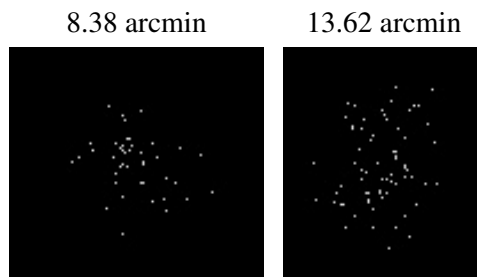
2.5.2 Slot 1



2.5.3 Slot 2



3 Point Sources



A Summary

A.1 Status

V&V Scientist	Beth Sundheim
V&V Date (YYYY-MM-DD)	2006.12.11
V&V Edition	1
V&V Disposition and Status	OK
V&V Charge Time	4.8

A.2 Comments