

V&V Reference Report

L2 ASCDS Version : 7.6.9

Observation 1690 - L2 Version 001
Chandra X-Ray Center

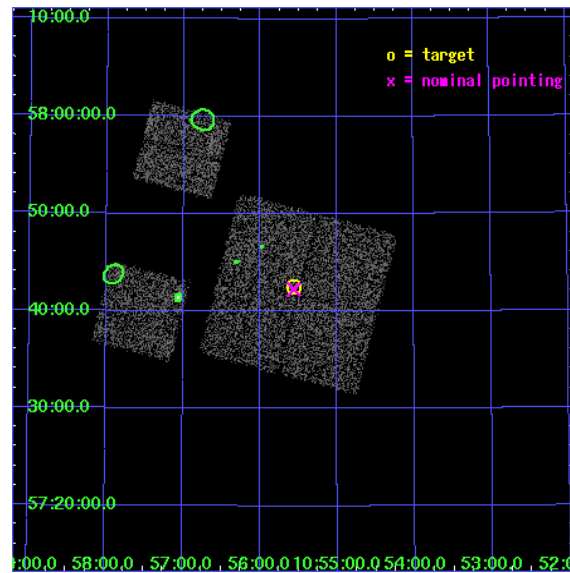
L2 Processing Date : Dec 11 2006

Contents

1	Front	2
2	OBI	3
2.1	OBI	3
2.1.1	Images	3
2.1.2	Bias	3
2.1.3	Parameters	4
2.1.4	Events	4
2.2	Compared Parameters	5
2.3	Aspect	6
2.4	Star Slots	9
2.4.1	Slot 3	9
2.4.2	Slot 4	10
2.4.3	Slot 5	11
2.4.4	Slot 6	12
2.4.5	Slot 7	13
2.5	FID Slots	14
2.5.1	Slot 0	14
2.5.2	Slot 1	15
2.5.3	Slot 2	16
3	Point Sources	17
A	Summary	18
A.1	Status	18
A.2	Comments	18

1 Front

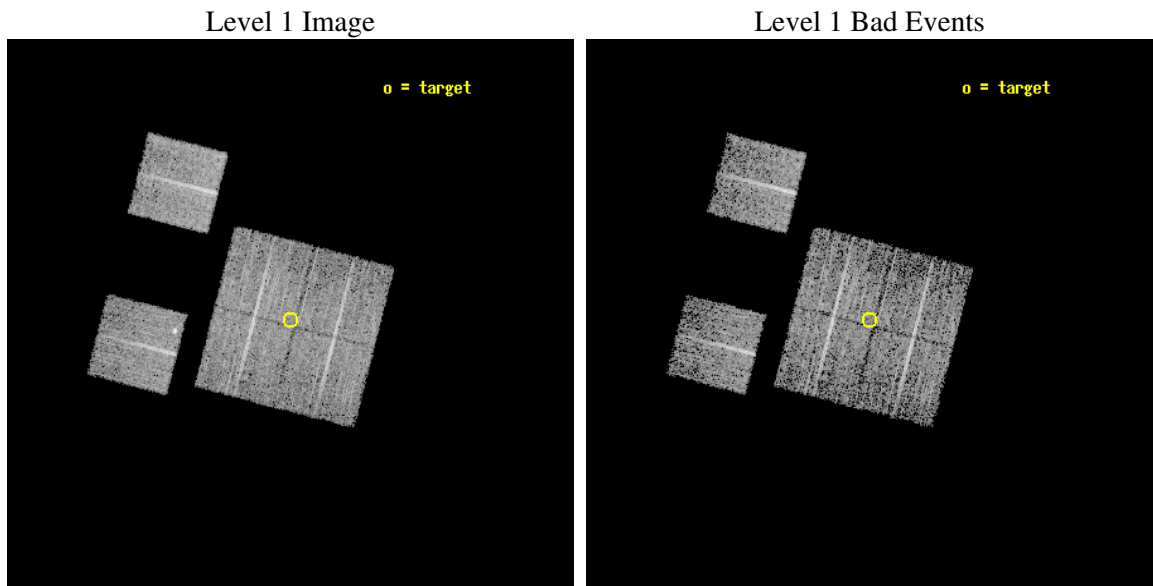
seq_num	900049
obs_id	1690
title	LOCKMAN HOLE SHALLOW SURVEY
observer	Dr. Stephen Murray
object	LOCKMAN HOLE #18
dtcycle	0
cycle	P
ra_targ	163.891667
dec_targ	57.708889
ra_nom	163.89019945026
dec_nom	57.704218777486
roll_nom	284.46279332927
revision	2
ontime	4758.4000044316
livetime	4698.146278411
ontime0	4758.4000044316
ontime1	4758.4000044316
ontime2	4758.4000044316
ontime3	4758.4000044316
ontime6	4758.4000044316
ontime8	4758.4000044316
l2events	18956



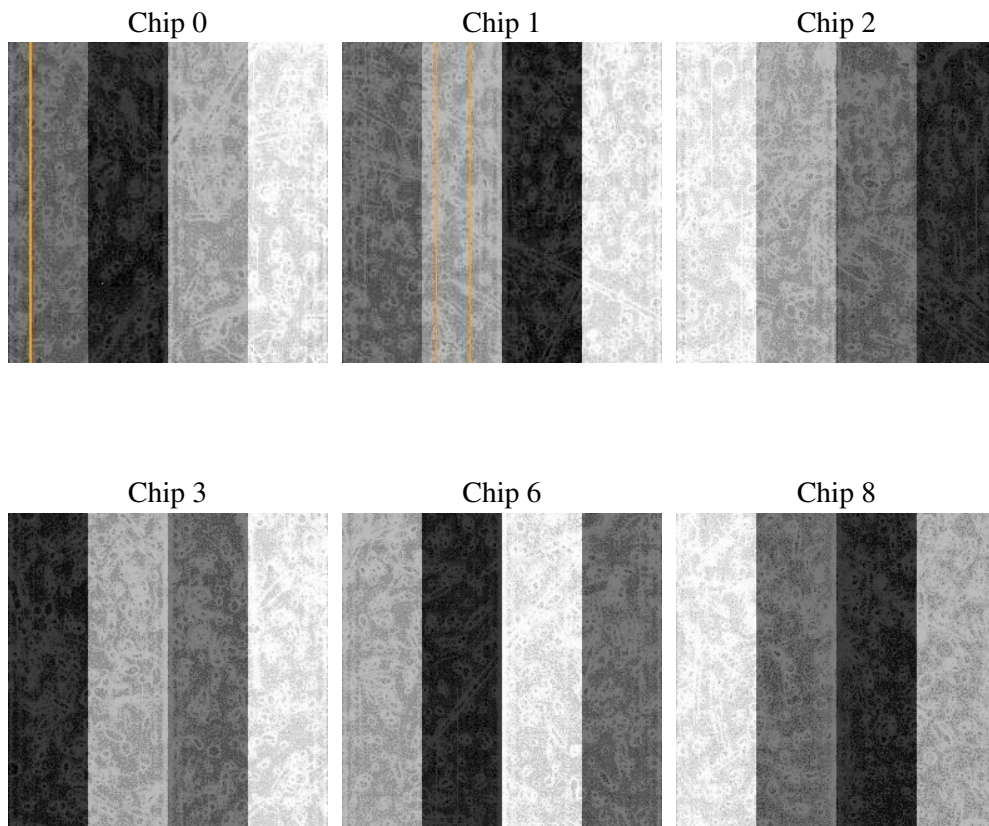
2 OBI

2.1 OBI

2.1.1 Images



2.1.2 Bias



2.1.3 Parameters

obi_num	0
ascdsver	7.6.9
caldsver	3.2.4
date	2006-12-11T18:45:48
revision	2

sched_exp_time	5000.000000
ontime	4764.2655761689
ontime0	4764.2655761689
ontime1	4764.2655761689
ontime2	4764.2655761689
ontime3	4764.2655761689
ontime6	4764.2655761689
ontime8	4764.2655761689
l1events	194995

2.1.4 Events

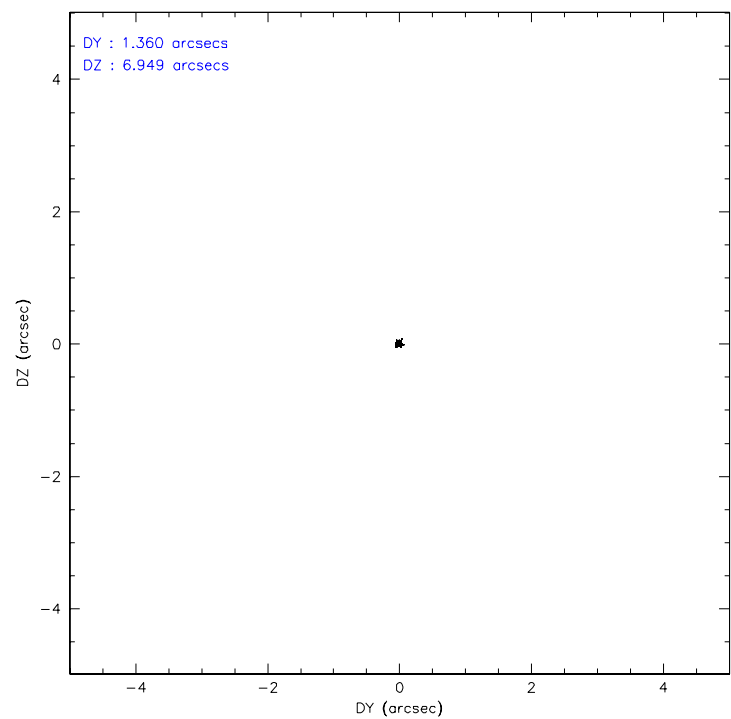
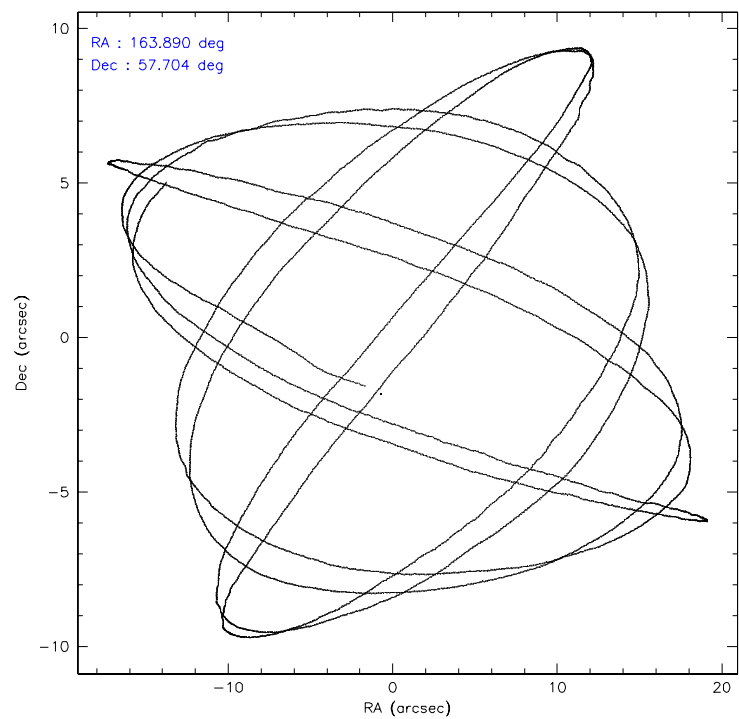
	ccd 0	ccd 1	ccd 2	ccd 3	ccd 6	ccd 8
level 1 events	29006	29327	31111	32691	32032	40828
rejected events	25432	25720	27738	29205	28064	33373
rejected %	87%	87%	89%	89%	87%	81%

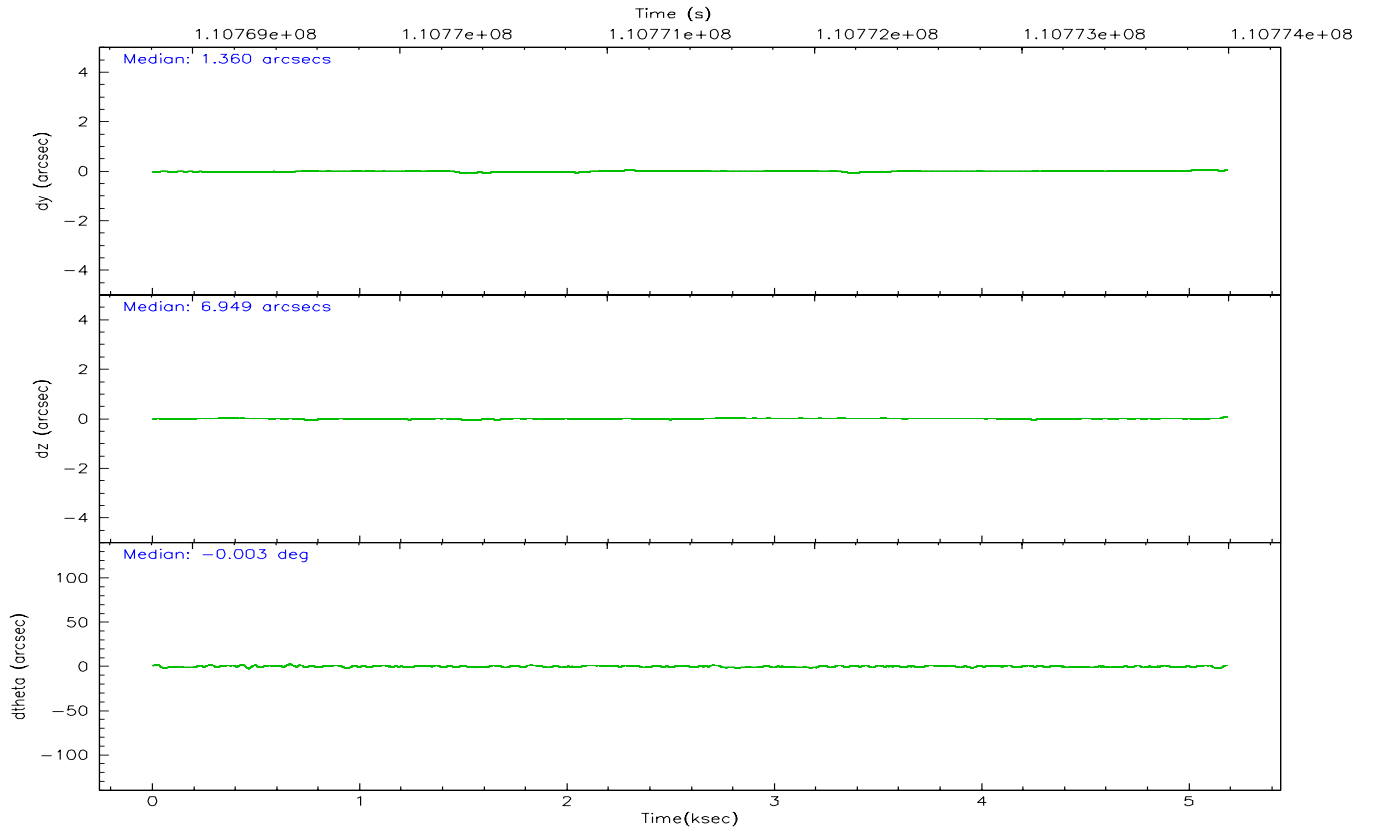
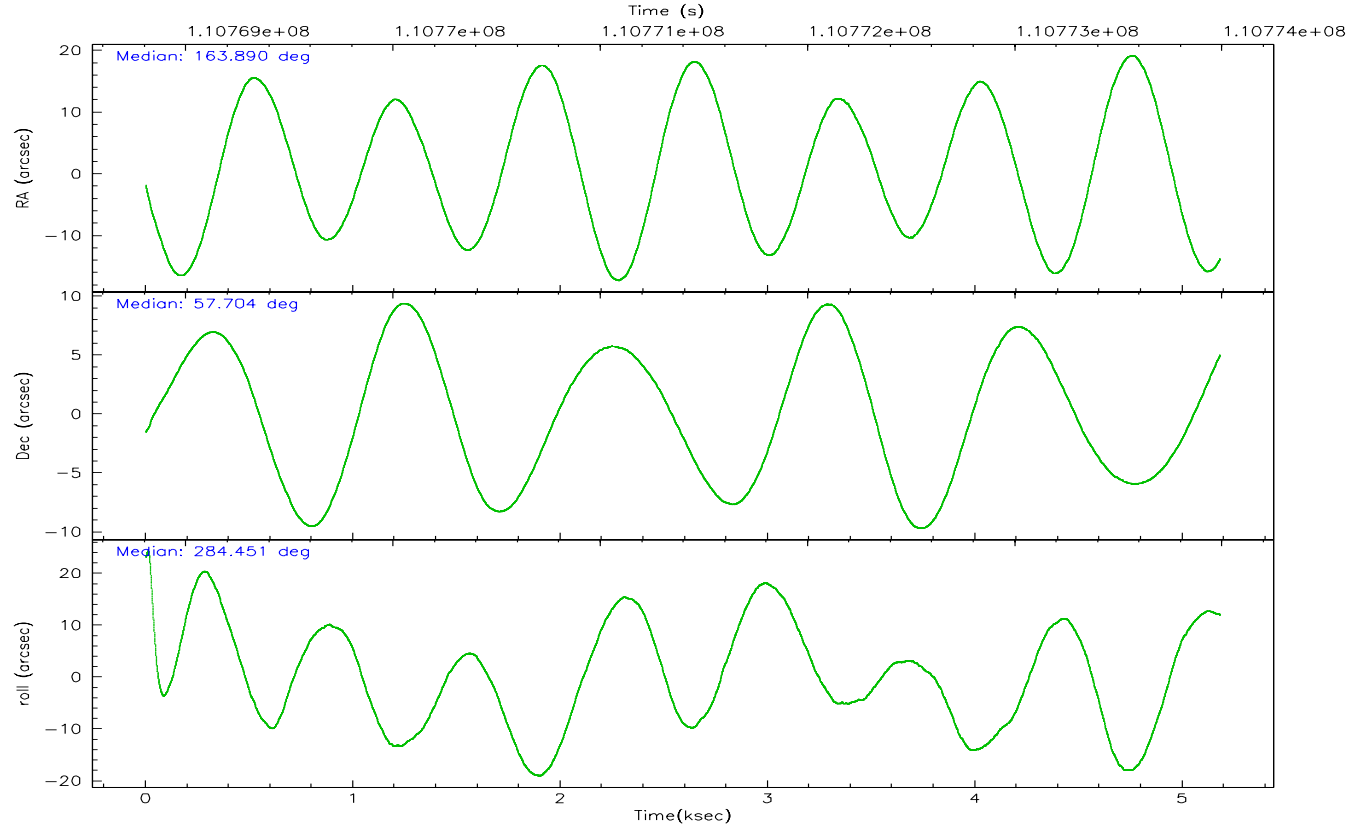
	ccd 0	ccd 1	ccd 2	ccd 3	ccd 6	ccd 8
grade 0 events	1496	1404	1455	1480	1899	2616
	5%	4%	4%	4%	5%	6%
grade 1 events	15	11	19	16	17	24
	0%	0%	0%	0%	0%	0%
grade 2 events	749	711	714	718	719	1427
	2%	2%	2%	2%	2%	3%
grade 3 events	374	399	321	357	365	906
	1%	1%	1%	1%	1%	2%
grade 4 events	319	388	315	315	330	802
	1%	1%	1%	0%	1%	1%
grade 5 events	1155	1178	1070	1177	1269	1620
	3%	4%	3%	3%	3%	3%
grade 6 events	646	709	572	623	666	1709
	2%	2%	1%	1%	2%	4%
grade 7 events	24252	24527	26645	28005	26767	31724
	83%	83%	85%	85%	83%	77%

2.2 Compared Parameters

Parameter	Planned	Actual	Parameter	Planned	Actual
Instrument	ACIS	ACIS	Obspar format version number	6	6
Detector	ACIS-012368	ACIS-012368	Obspar file type	PREDICTED	ACTUAL
Grating	NONE	NONE	Obspar update status	NONE	UPDATED
Data mode	FAINT	FAINT	Number of optional ACIS chips dropped	0	0
Observation mode	POINTING	POINTING	On-chip summing requested	N	N
Pointing RA	163.854317	163.8901994502579	Subarray requested	NONE	NONE
Pointing Dec	57.723777	57.70421877748621	Alternating exposures requested	N	N
Pointing Roll	284.284450	284.4627933292721	Primary exposure time	0.000000	3.2
SIM focus pos (mm)	-0.782348	-0.7809083437167272			
SIM defocus (mm)	0	0.001439871863259334			
SIM translation stage pos (mm)	-233.592463	-233.5874344608287			
SIM translation stage offset (mm)	0	-0.005018542100998502			
Observation start time	110768993.184000	110768616.8862			
Observation start date	2001-07-06T01:08:49	2001-07-06T01:03:36			
Observation end time	110773993.184000	110774126.77391			
Observation end date	2001-07-06T02:32:09	2001-07-06T02:35:26			
Read mode	TIMED	TIMED			

2.3 Aspect



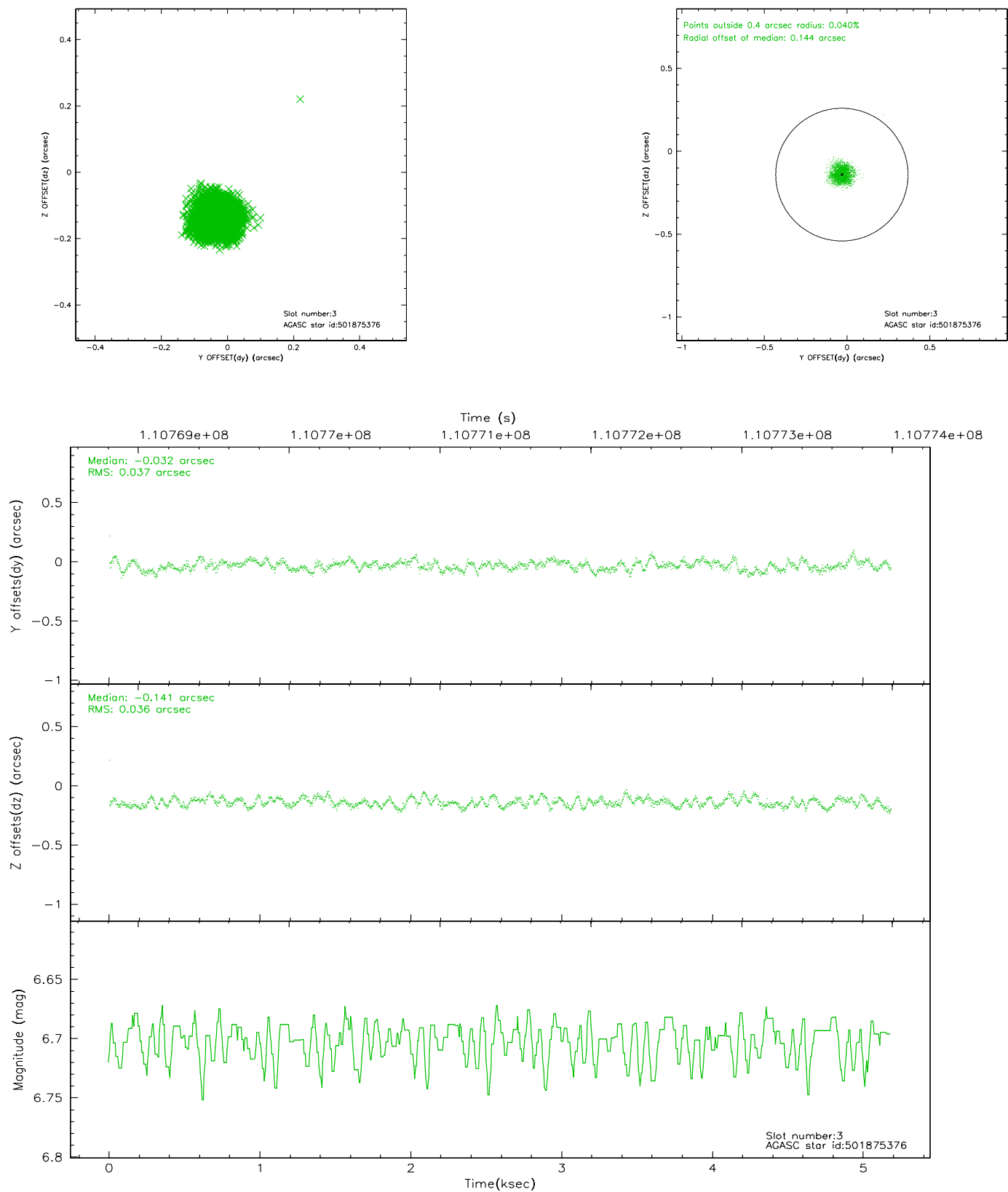


Slot Statistics

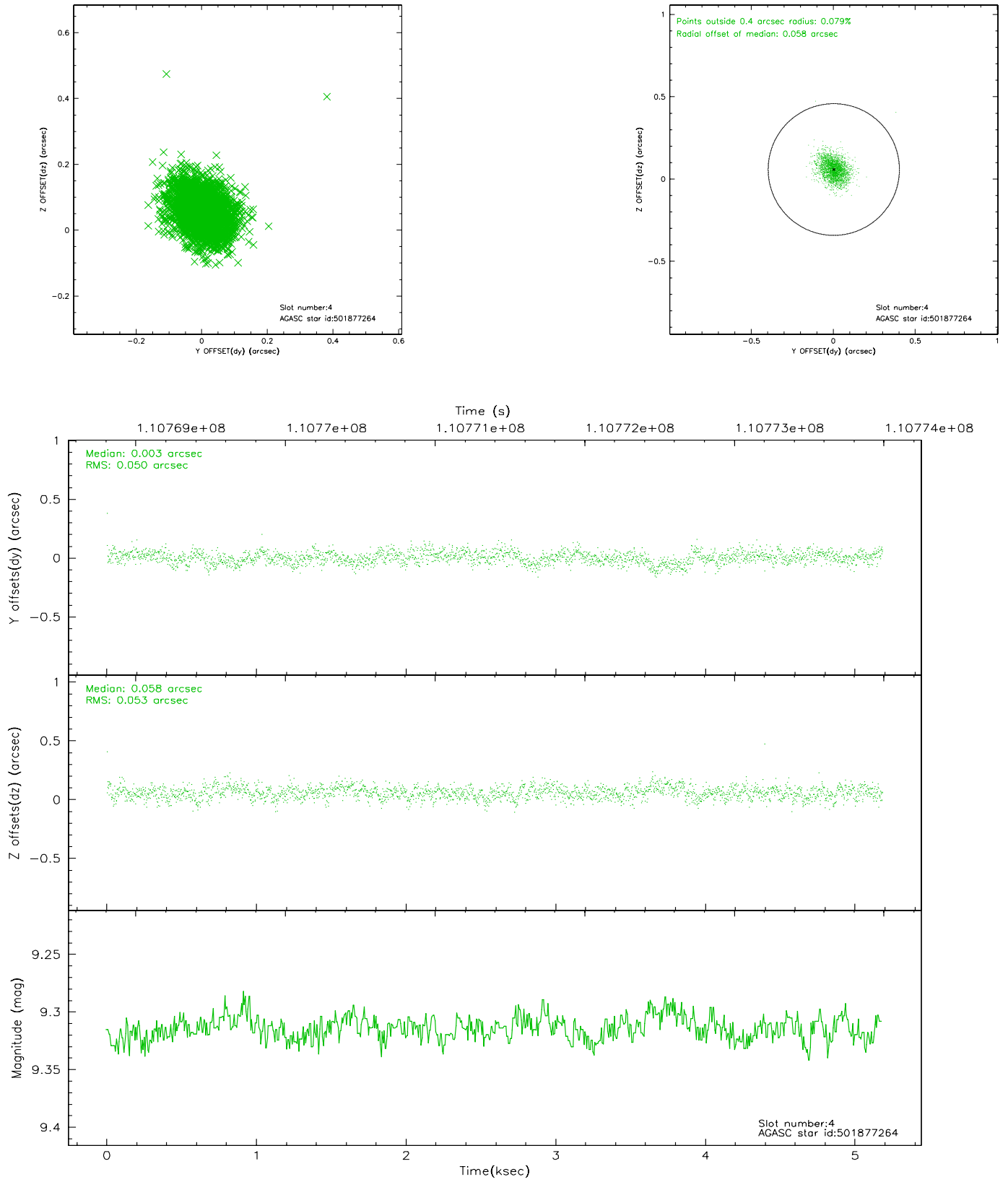
slot	status	id	mag	n_pts	med_dy	med_dz	dr1	dr2	ra	dec	mean_y	mean_z
0	FID	ACIS-I-2	7.16	1264	-0.023	-0.045	0.009	0.015	0.000000	0.000000	-755.70	-836.76
1	FID	ACIS-I-4	7.18	1264	-0.090	0.034	0.005	0.009	0.000000	0.000000	2157.74	1068.94
2	FID	ACIS-I-5	7.23	1264	0.013	0.079	0.009	0.014	0.000000	0.000000	-1808.01	1068.12
3	GUIDE	501875376	6.70	2529	-0.032	-0.141	0.055	0.083	164.111621	57.502963	892.64	285.81
4	GUIDE	501877264	9.31	2529	0.003	0.058	0.076	0.123	163.254394	57.702218	-213.43	-1136.56
5	GUIDE	501876472	9.00	2529	-0.004	0.026	0.063	0.104	163.621724	57.867447	-611.39	-305.04
6	GUIDE	501877056	9.69	2529	-0.077	-0.012	0.099	0.161	164.433826	58.166965	-1279.36	1460.22
7	GUIDE	501488296	9.74	2526	0.111	0.063	0.096	0.160	164.354320	57.421227	1291.12	671.67

2.4 Star Slots

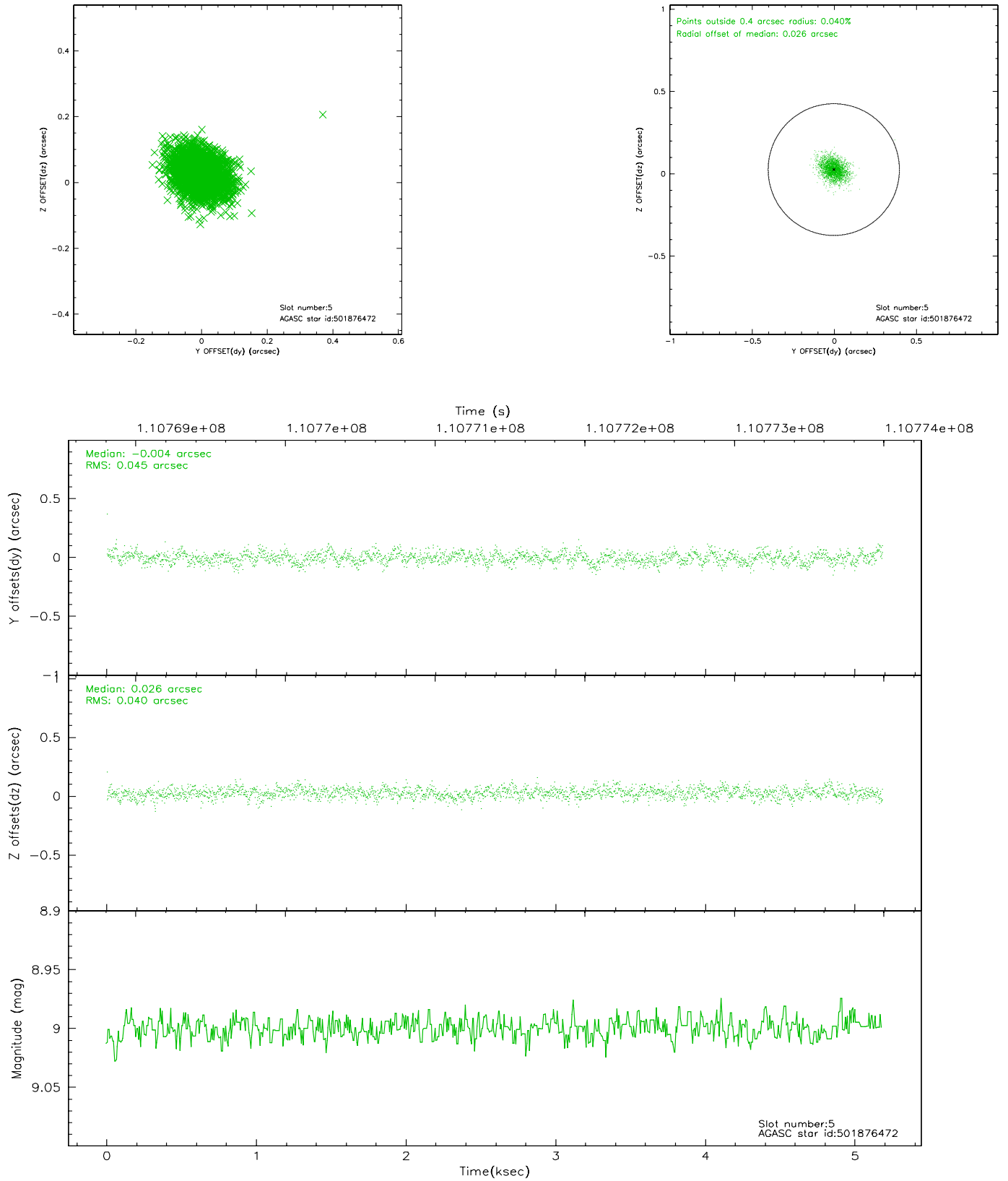
2.4.1 Slot 3



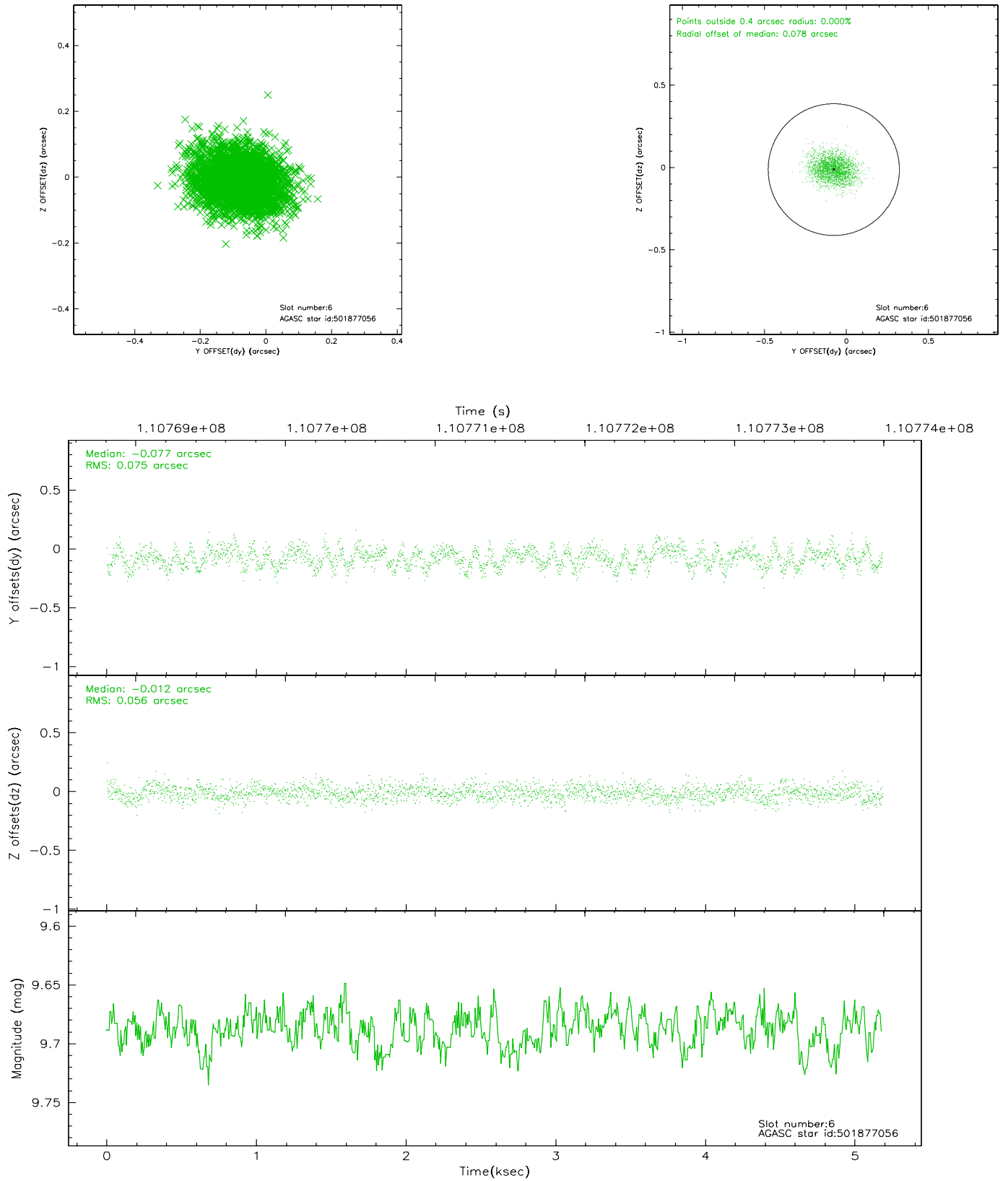
2.4.2 Slot 4



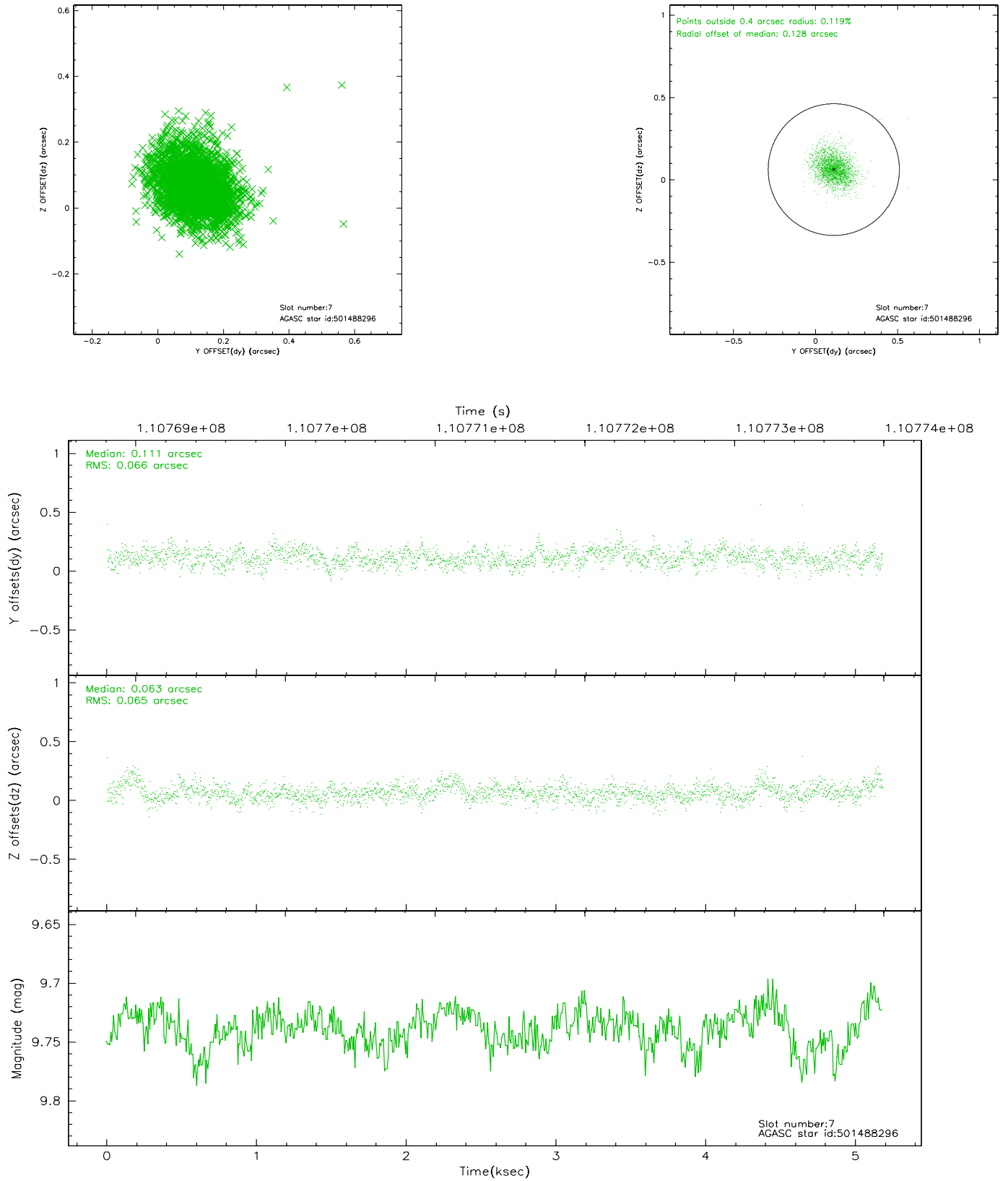
2.4.3 Slot 5



2.4.4 Slot 6

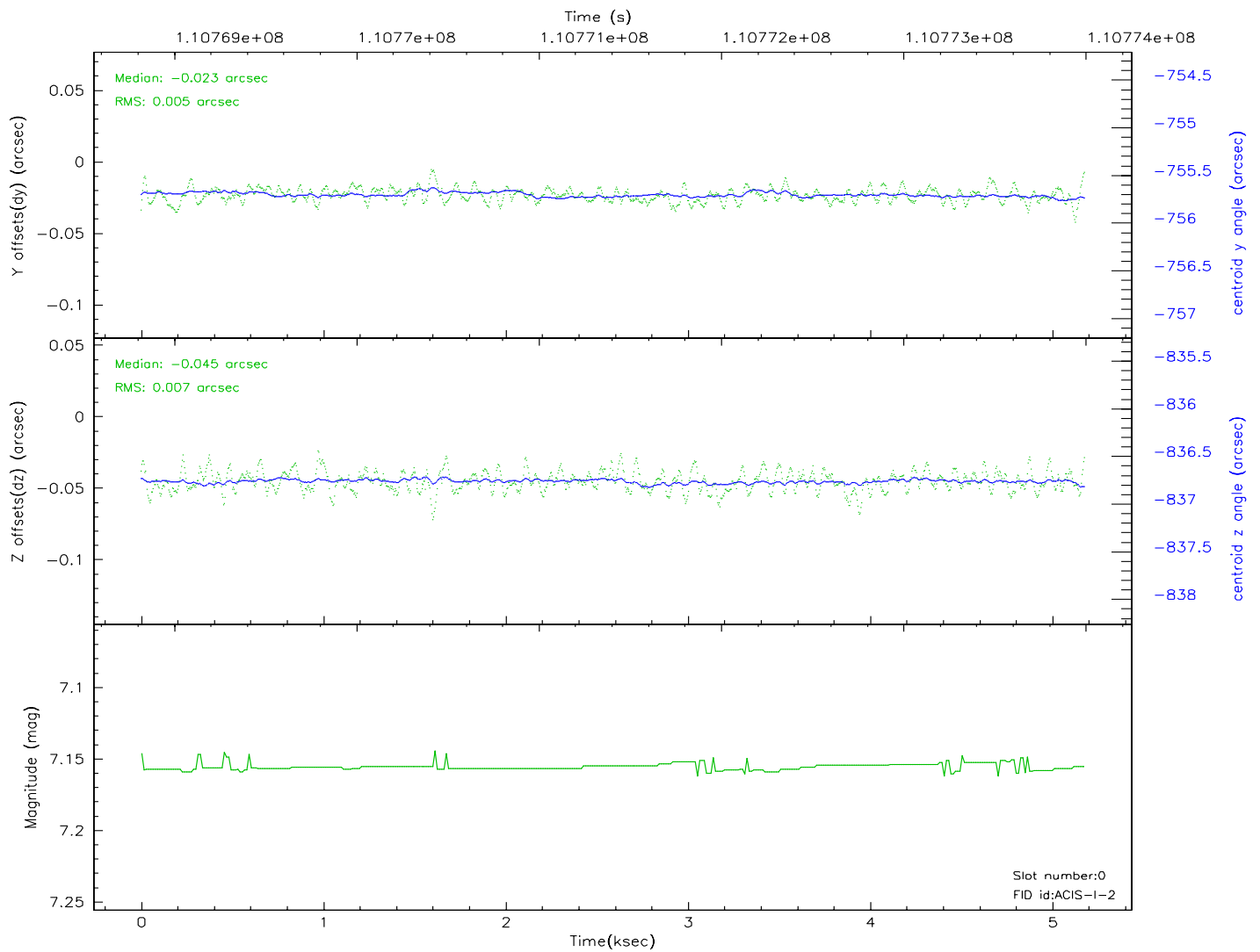
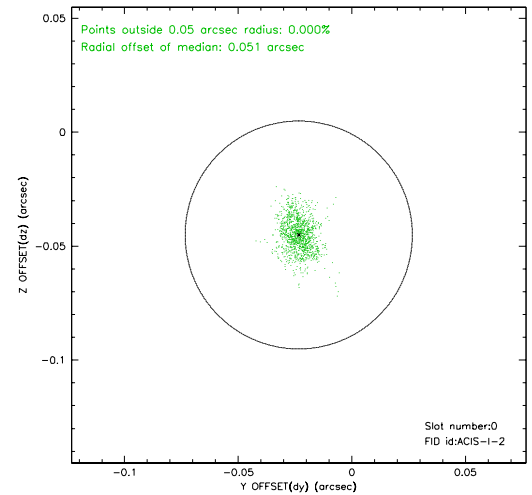
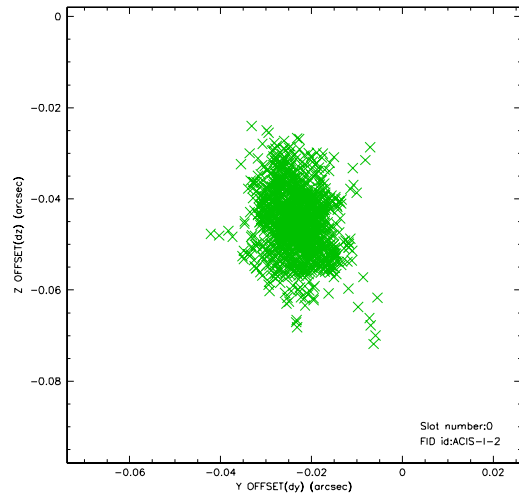


2.4.5 Slot 7

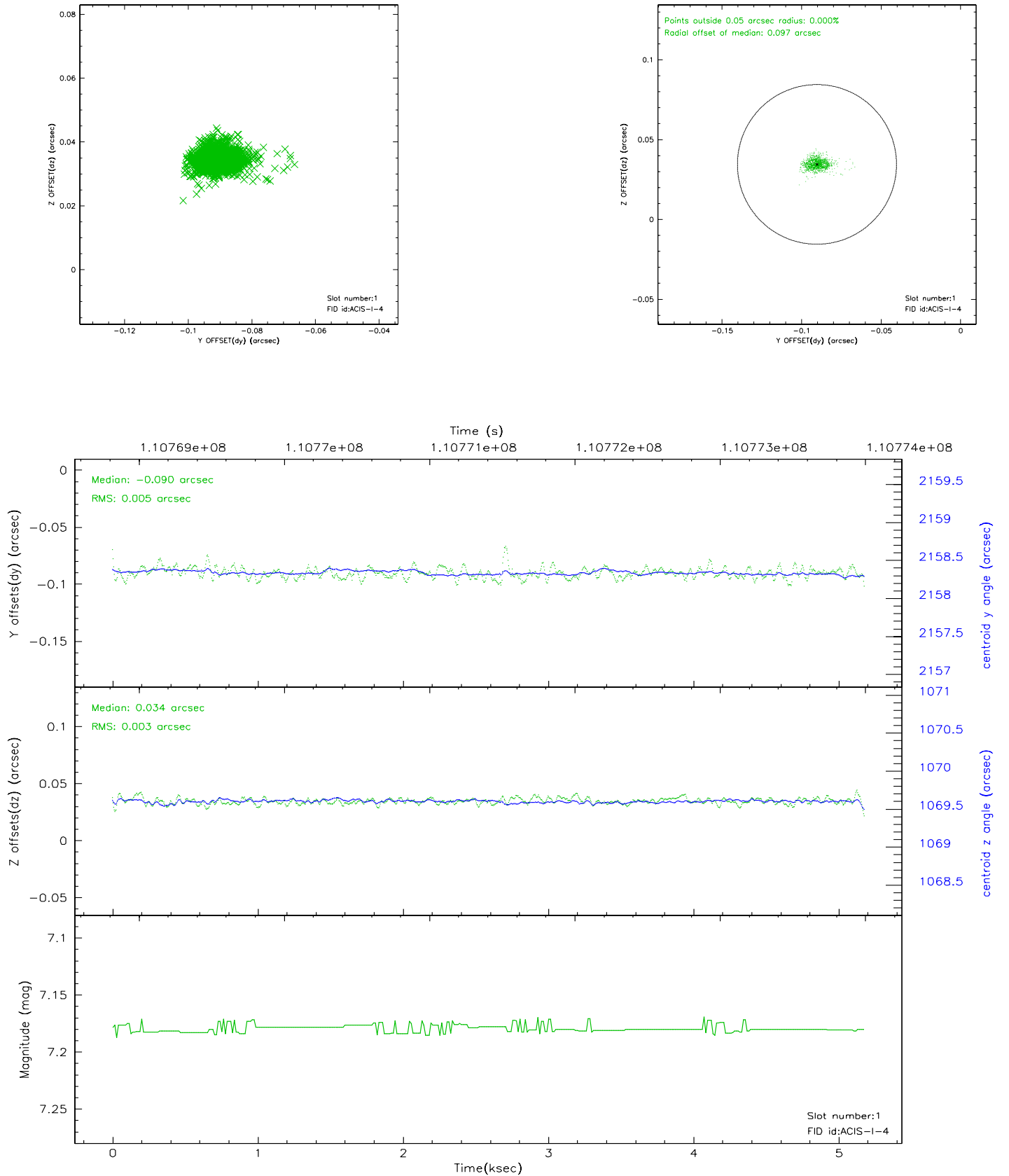


2.5 FID Slots

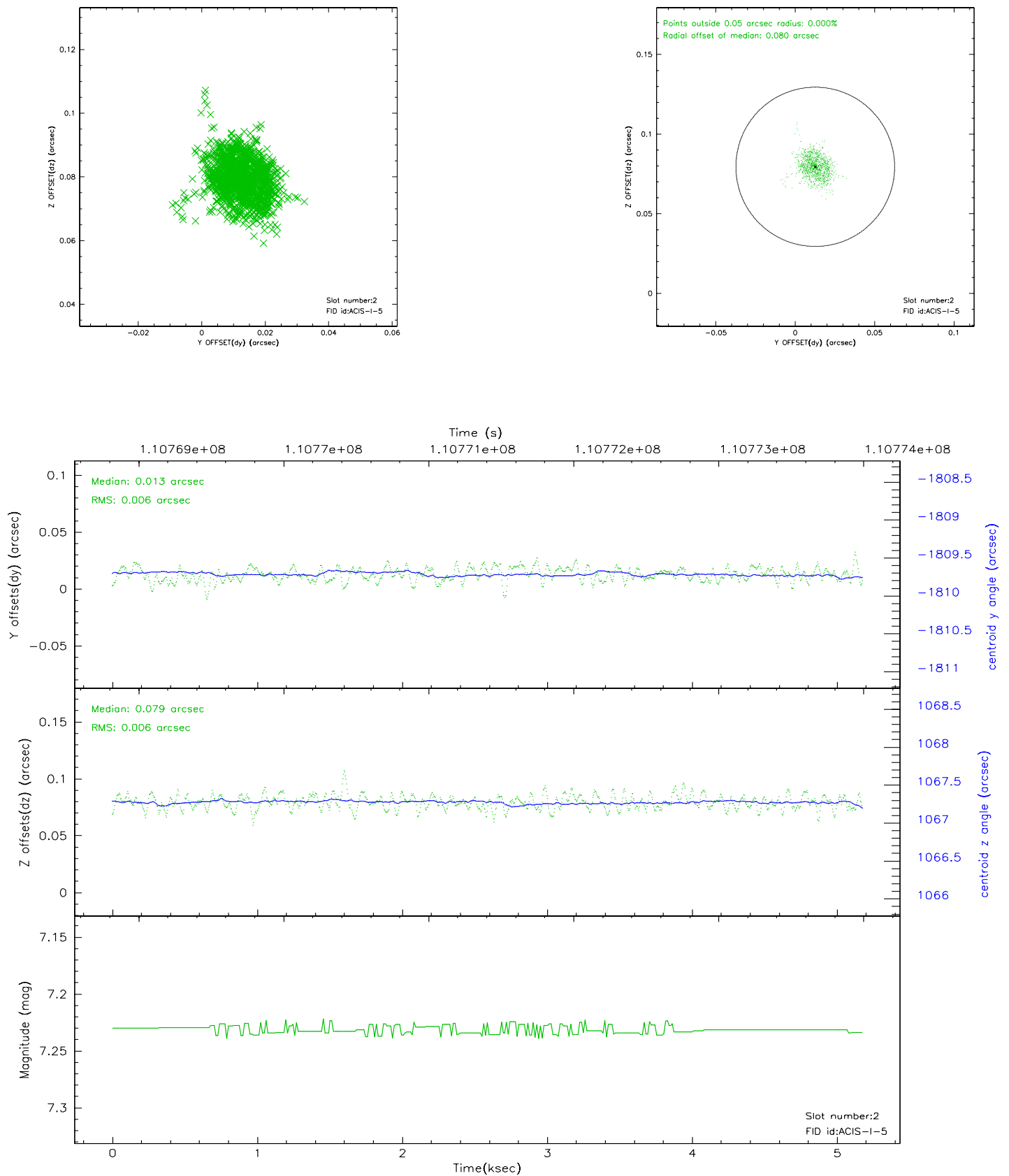
2.5.1 Slot 0



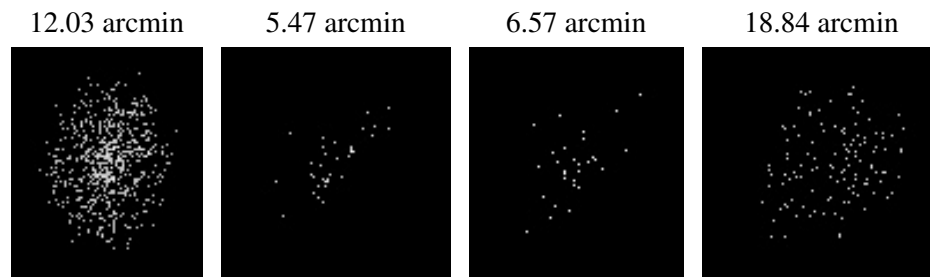
2.5.2 Slot 1



2.5.3 Slot 2



3 Point Sources



A Summary

A.1 Status

V&V Scientist	Beth Sundheim
V&V Date (YYYY-MM-DD)	2006.12.11
V&V Edition	1
V&V Disposition and Status	OK
V&V Charge Time	4.761

A.2 Comments