

V&V Reference Report

L2 ASCDS Version : 7.6.9

Observation 1687 - L2 Version 001
Chandra X-Ray Center

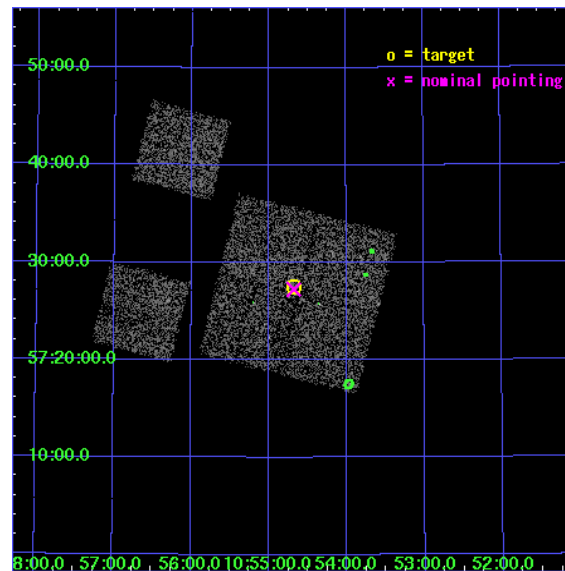
L2 Processing Date : Dec 11 2006

Contents

1	Front	2
2	OBI	3
2.1	OBI	3
2.1.1	Images	3
2.1.2	Bias	3
2.1.3	Parameters	4
2.1.4	Events	4
2.2	Compared Parameters	5
2.3	Aspect	6
2.4	Star Slots	9
2.4.1	Slot 3	9
2.4.2	Slot 4	10
2.4.3	Slot 5	11
2.4.4	Slot 6	12
2.4.5	Slot 7	13
2.5	FID Slots	14
2.5.1	Slot 0	14
2.5.2	Slot 1	15
2.5.3	Slot 2	16
3	Point Sources	17
A	Summary	18
A.1	Status	18
A.2	Comments	18

1 Front

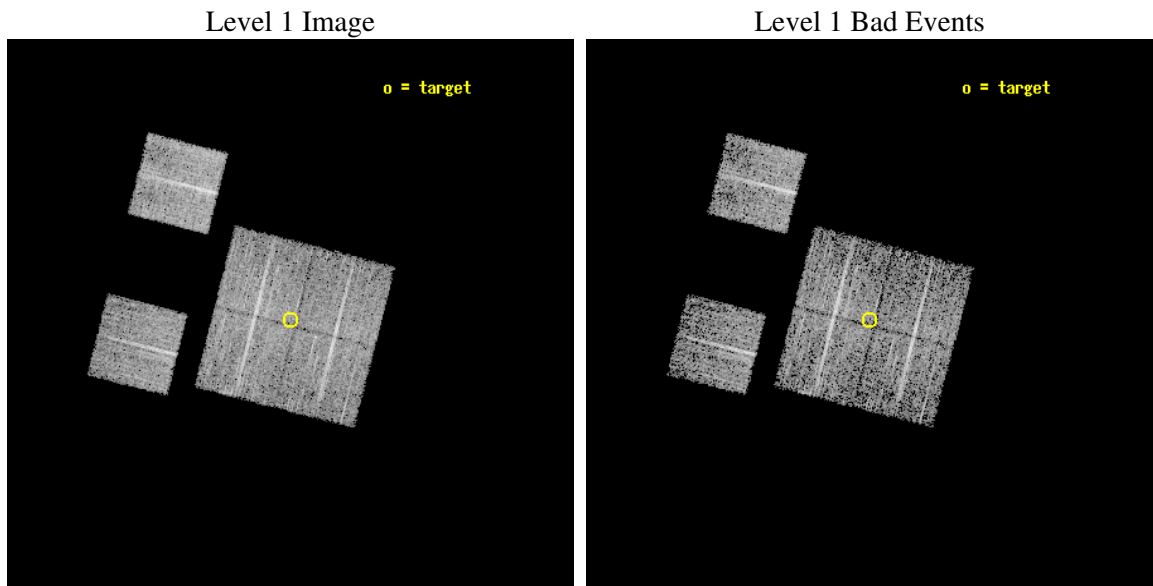
seq_num	900046
obs_id	1687
title	LOCKMAN HOLE SHALLOW SURVEY
observer	Dr. Stephen Murray
object	LOCKMAN HOLE #12
dtcycle	0
cycle	P
ra_targ	163.670833
dec_targ	57.458889
ra_nom	163.6696494423
dec_nom	57.454209446329
roll_nom	284.2983660099
revision	2
ontime	4758.4000044316
livetime	4698.146278411
ontime0	4758.4000044316
ontime1	4755.1590541899
ontime2	4758.4000044316
ontime3	4758.4000044316
ontime6	4758.4000044316
ontime8	4758.4000044316
l2events	18052



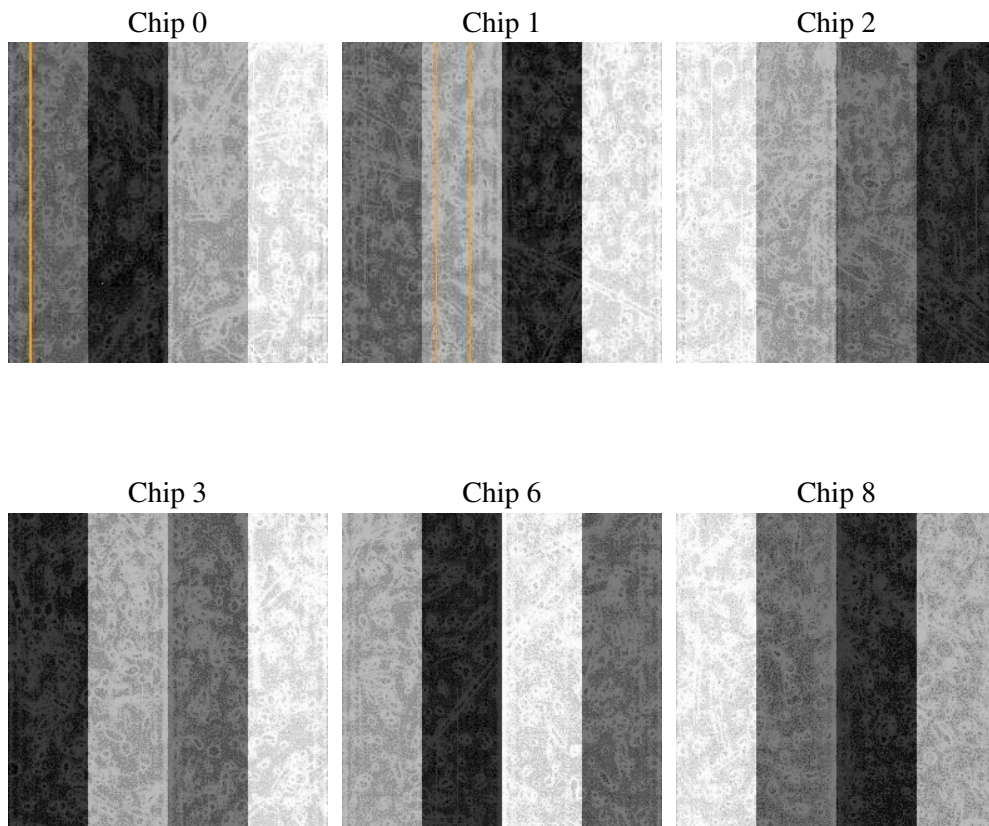
2 OBI

2.1 OBI

2.1.1 Images



2.1.2 Bias



2.1.3 Parameters

obi_num	0
ascdsver	7.6.9
caldsver	3.2.4
date	2006-12-11T18:38:28
revision	2

sched_exp_time	5000.000000
ontime	4764.2655661702
ontime0	4764.2655661702
ontime1	4761.0246159285
ontime2	4764.2655661702
ontime3	4764.2655661702
ontime6	4764.2655661702
ontime8	4764.2655960768
l1events	191713

2.1.4 Events

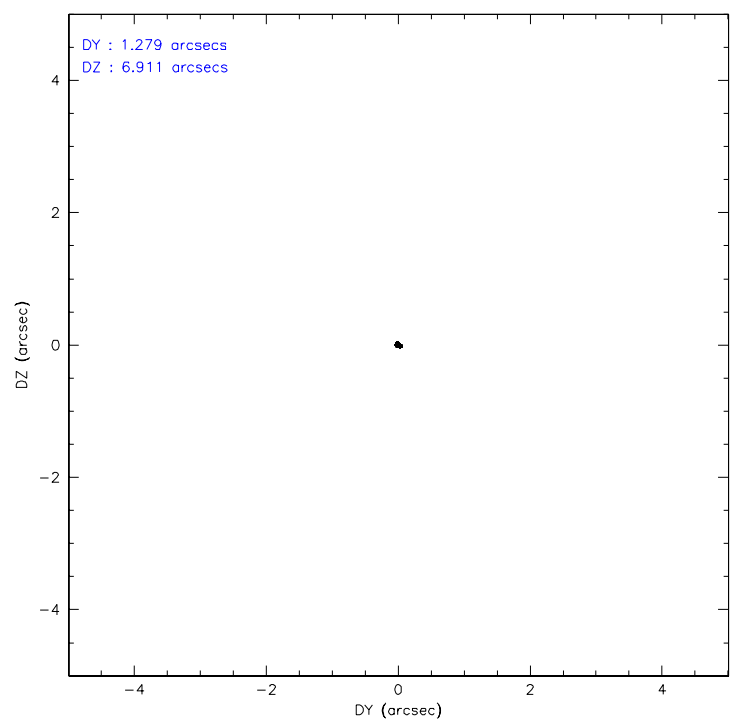
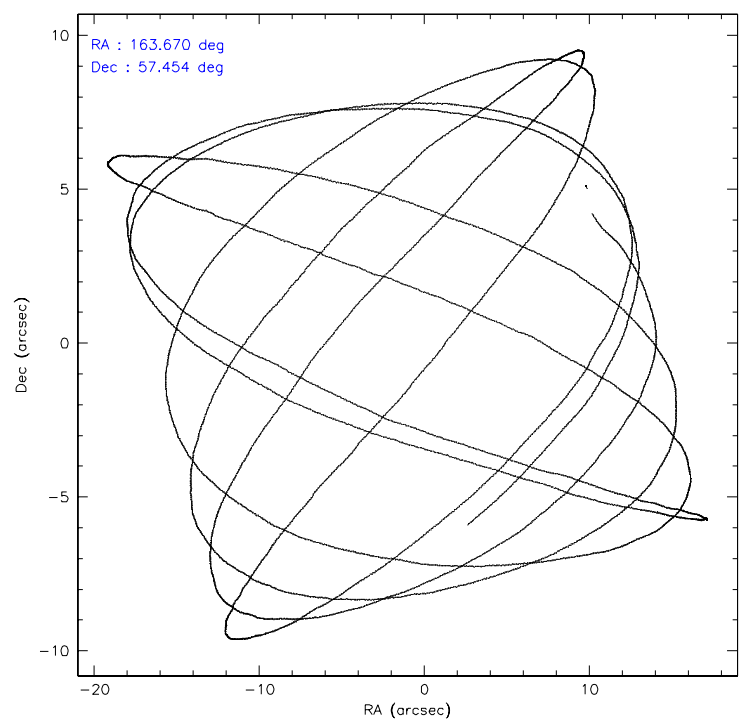
	ccd 0	ccd 1	ccd 2	ccd 3	ccd 6	ccd 8
level 1 events	28403	28461	31157	31697	30147	41848
rejected events	24853	24634	27820	28297	26875	34210
rejected %	87%	86%	89%	89%	89%	81%

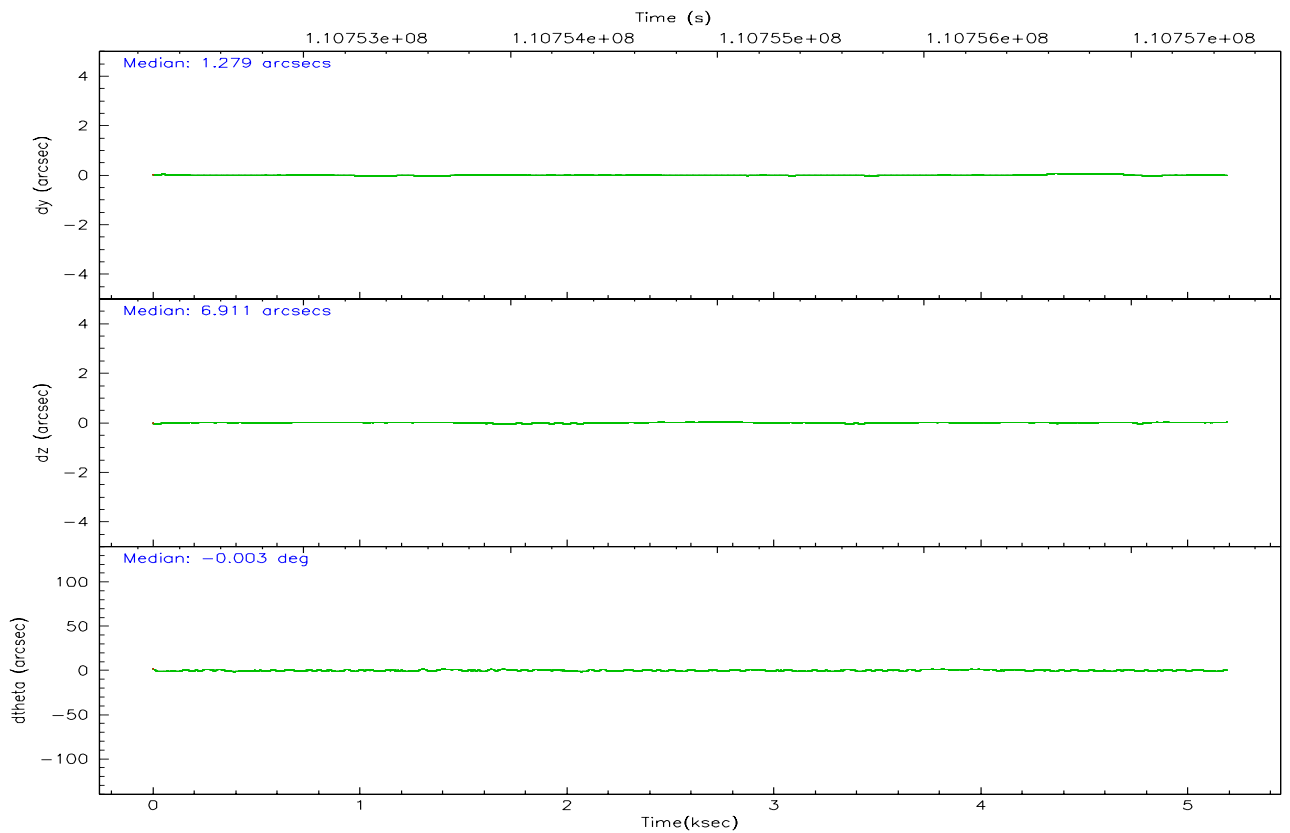
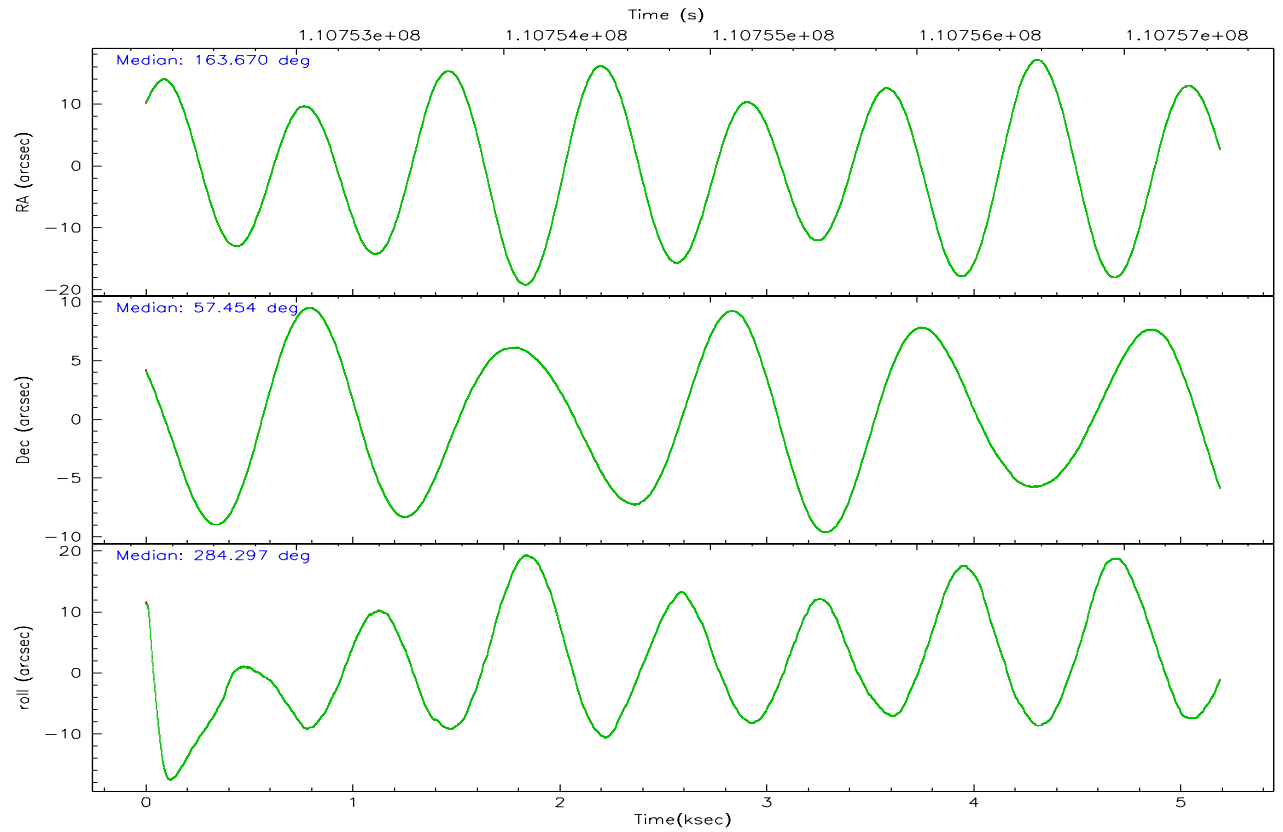
	ccd 0	ccd 1	ccd 2	ccd 3	ccd 6	ccd 8
grade 0 events	1527	1540	1485	1425	1304	2290
	5%	5%	4%	4%	4%	5%
grade 1 events	15	14	8	12	16	23
	0%	0%	0%	0%	0%	0%
grade 2 events	744	765	681	617	668	1712
	2%	2%	2%	1%	2%	4%
grade 3 events	377	401	297	353	318	747
	1%	1%	0%	1%	1%	1%
grade 4 events	318	402	323	345	327	720
	1%	1%	1%	1%	1%	1%
grade 5 events	1152	1171	1055	1165	1263	1569
	4%	4%	3%	3%	4%	3%
grade 6 events	594	725	555	666	662	2174
	2%	2%	1%	2%	2%	5%
grade 7 events	23676	23443	26753	27114	25589	32613
	83%	82%	85%	85%	84%	77%

2.2 Compared Parameters

Parameter	Planned	Actual	Parameter	Planned	Actual
Instrument	ACIS	ACIS	Obspar format version number	6	6
Detector	ACIS-012368	ACIS-012368	Obspar file type	PREDICTED	ACTUAL
Grating	NONE	NONE	Obspar update status	NONE	UPDATED
Data mode	FAINT	FAINT	Number of optional ACIS chips dropped	0	0
Observation mode	POINTING	POINTING	On-chip summing requested	N	N
Pointing RA	163.633819	163.6696494422966	Subarray requested	NONE	NONE
Pointing Dec	57.473822	57.45420944632862	Alternating exposures requested	N	N
Pointing Roll	284.119825	284.2983660098978	Primary exposure time	0.000000	3.2
SIM focus pos (mm)	-0.782348	-0.7809083437167272			
SIM defocus (mm)	0	0.001439871863259334			
SIM translation stage pos (mm)	-233.592463	-233.5874344608287			
SIM translation stage offset (mm)	0	-0.005018542100998502			
Observation start time	110752463.184000	110752087.22305			
Observation start date	2001-07-05T20:33:19	2001-07-05T20:28:07			
Observation end time	110757463.184000	110757596.59827			
Observation end date	2001-07-05T21:56:39	2001-07-05T21:59:56			
Read mode	TIMED	TIMED			

2.3 Aspect



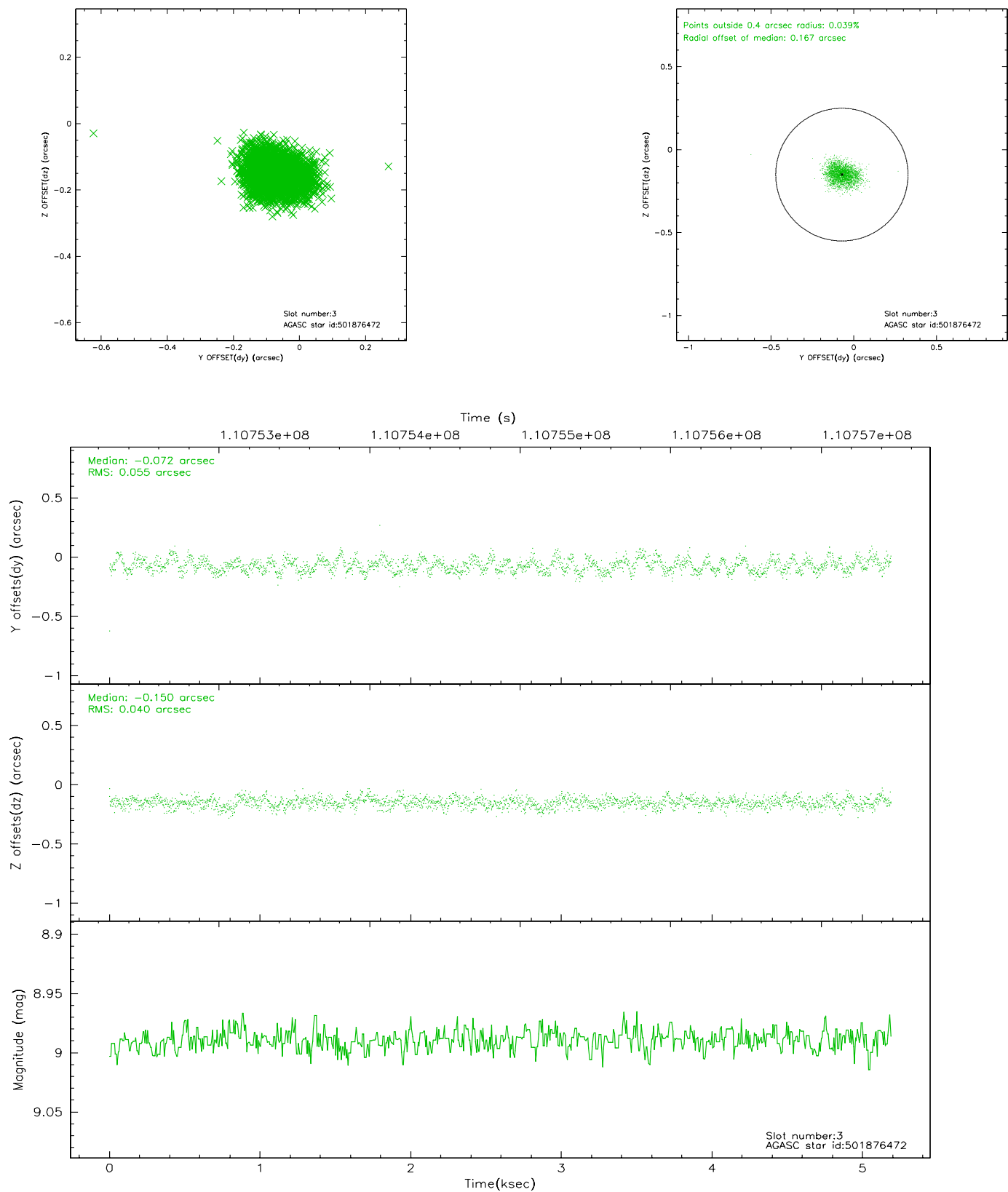


Slot Statistics

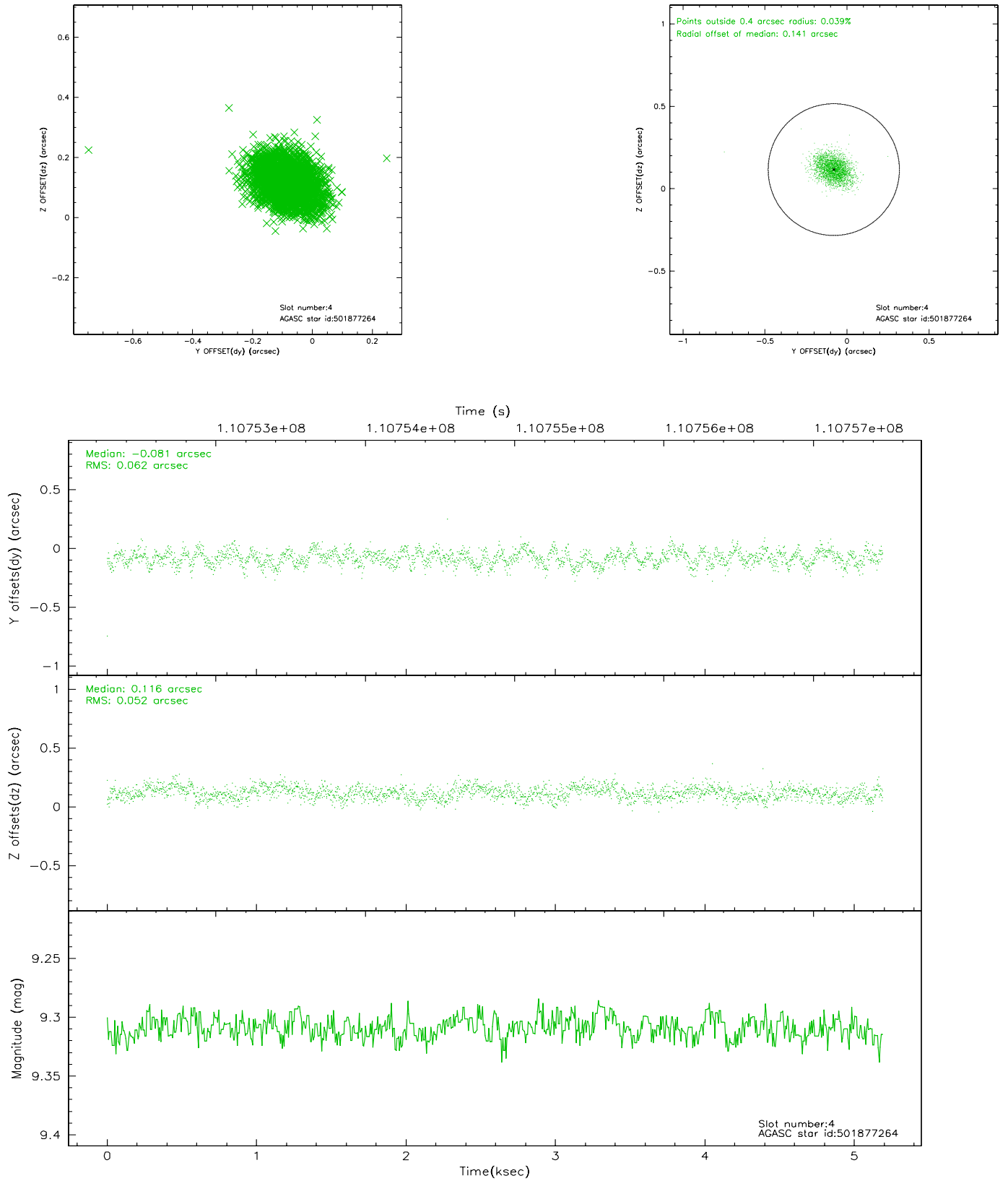
slot	status	id	mag	n_pts	med_dy	med_dz	dr1	dr2	ra	dec	mean_y	mean_z
0	FID	ACIS-I-2	7.16	1267	-0.024	-0.048	0.008	0.016	0.000000	0.000000	-755.63	-836.72
1	FID	ACIS-I-4	7.18	1267	-0.093	0.036	0.005	0.010	0.000000	0.000000	2157.82	1068.99
2	FID	ACIS-I-5	7.23	1266	0.016	0.081	0.009	0.016	0.000000	0.000000	-1807.93	1068.16
3	GUIDE	501876472	8.99	2532	-0.072	-0.150	0.073	0.115	163.621724	57.867447	-1380.02	322.11
4	GUIDE	501877264	9.31	2533	-0.081	0.116	0.085	0.140	163.254394	57.702218	-978.12	-507.24
5	GUIDE	501875376	6.70	2533	-0.065	-0.094	0.056	0.088	164.111621	57.502963	120.04	921.45
6	GUIDE	501619448	9.61	2529	0.248	0.146	0.091	0.154	165.050075	56.997105	2314.06	2281.09
7	GUIDE	501877056	9.71	2531	-0.034	-0.022	0.116	0.186	164.433826	58.166965	-2057.33	2084.17

2.4 Star Slots

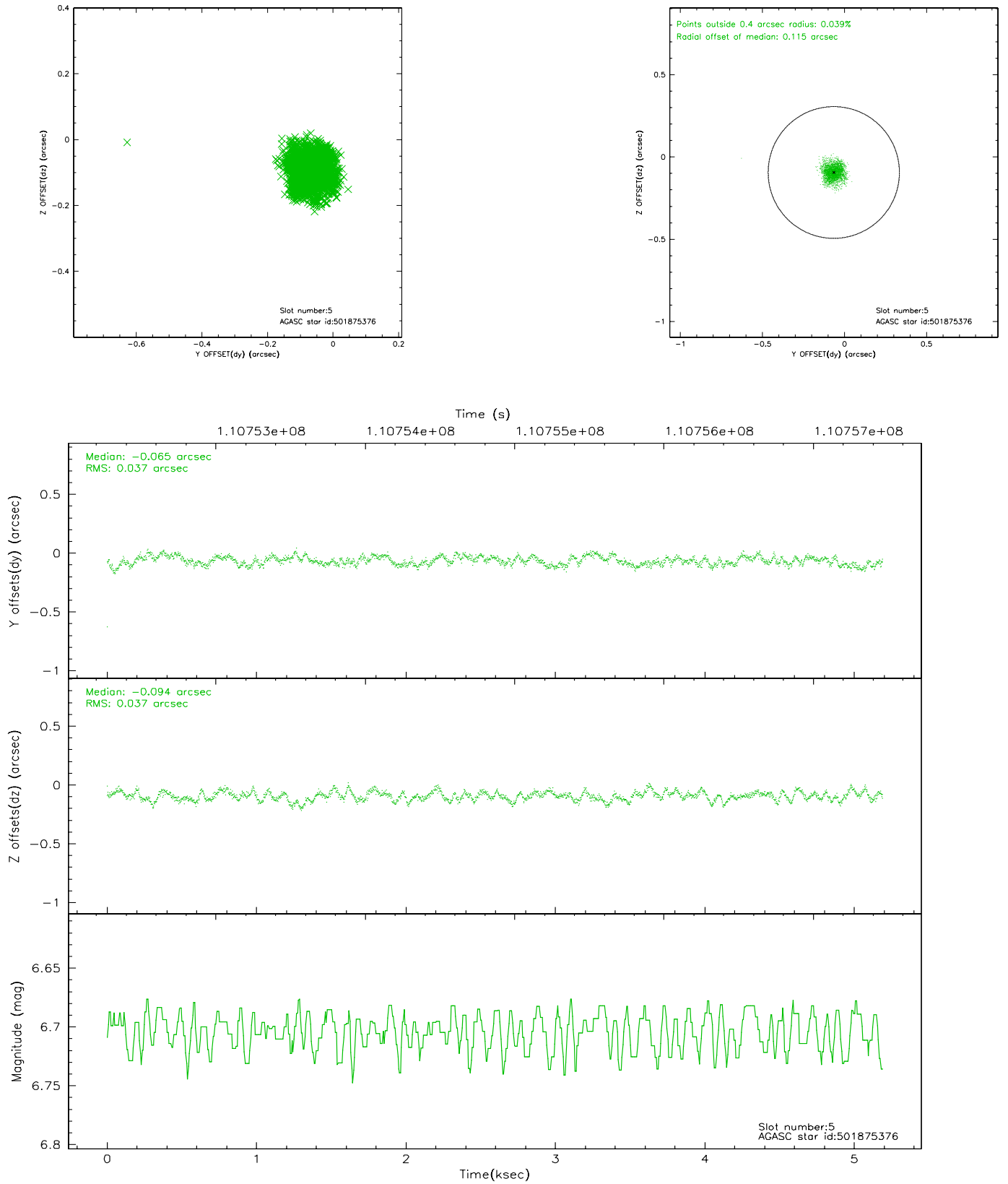
2.4.1 Slot 3



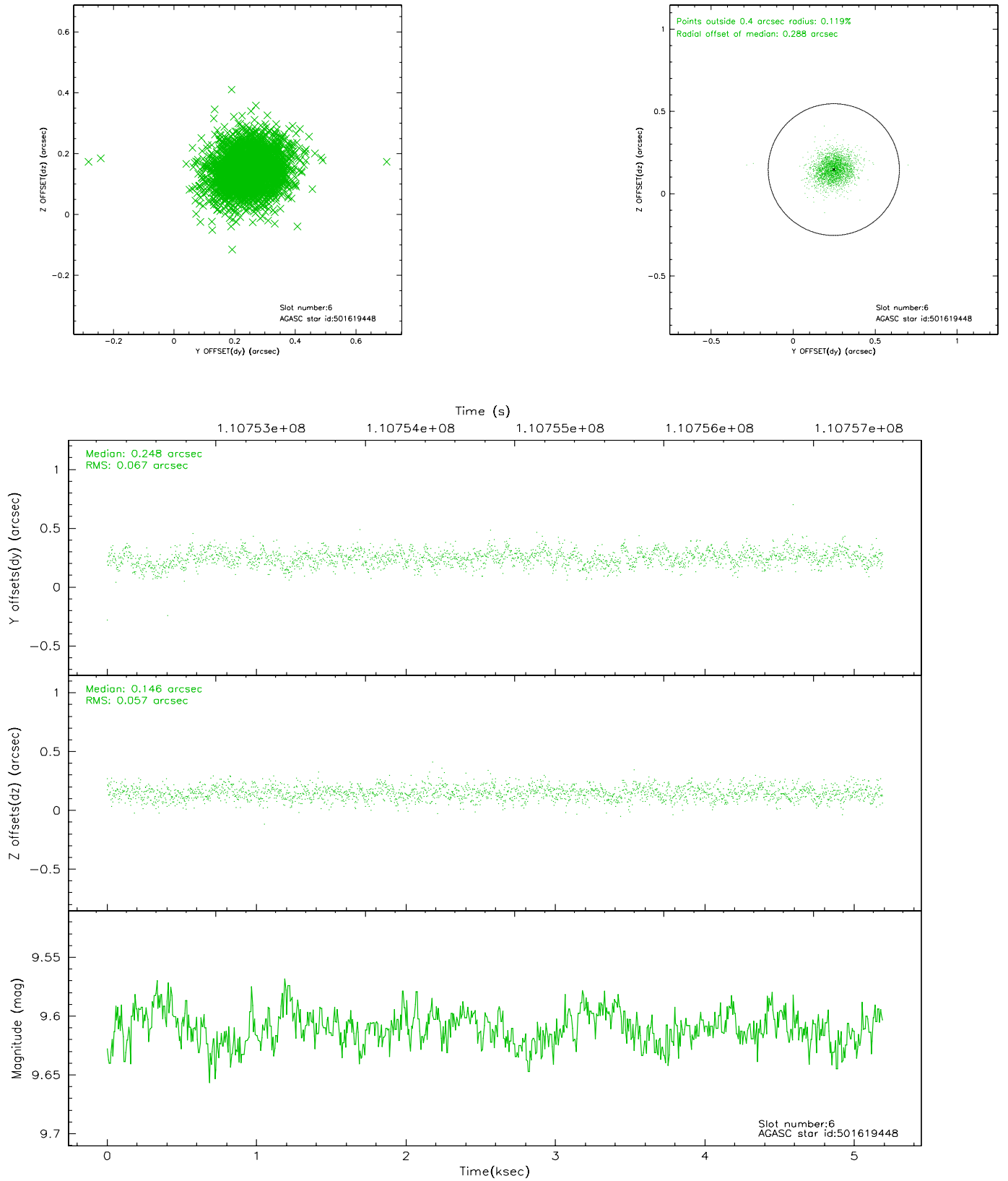
2.4.2 Slot 4



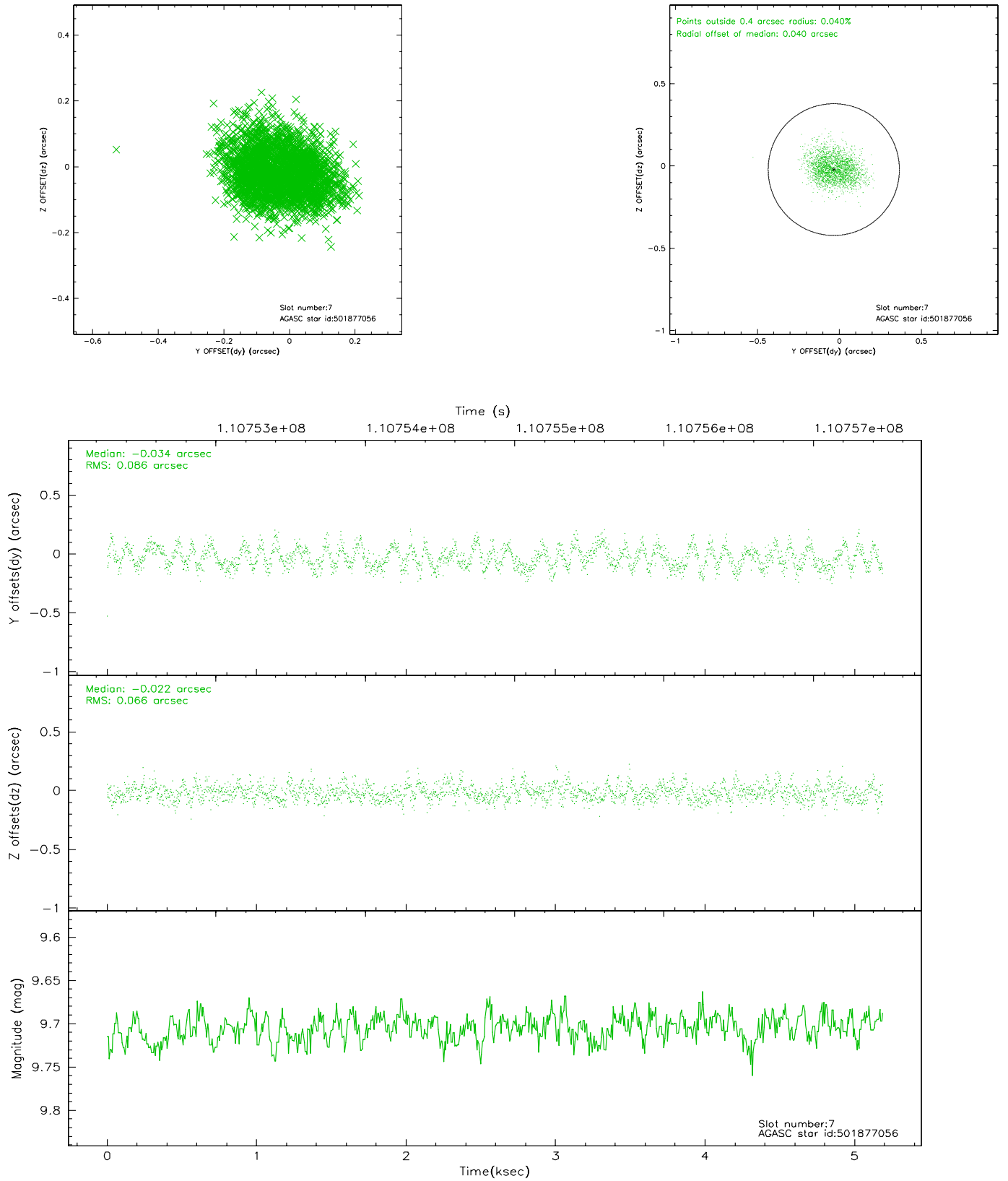
2.4.3 Slot 5



2.4.4 Slot 6

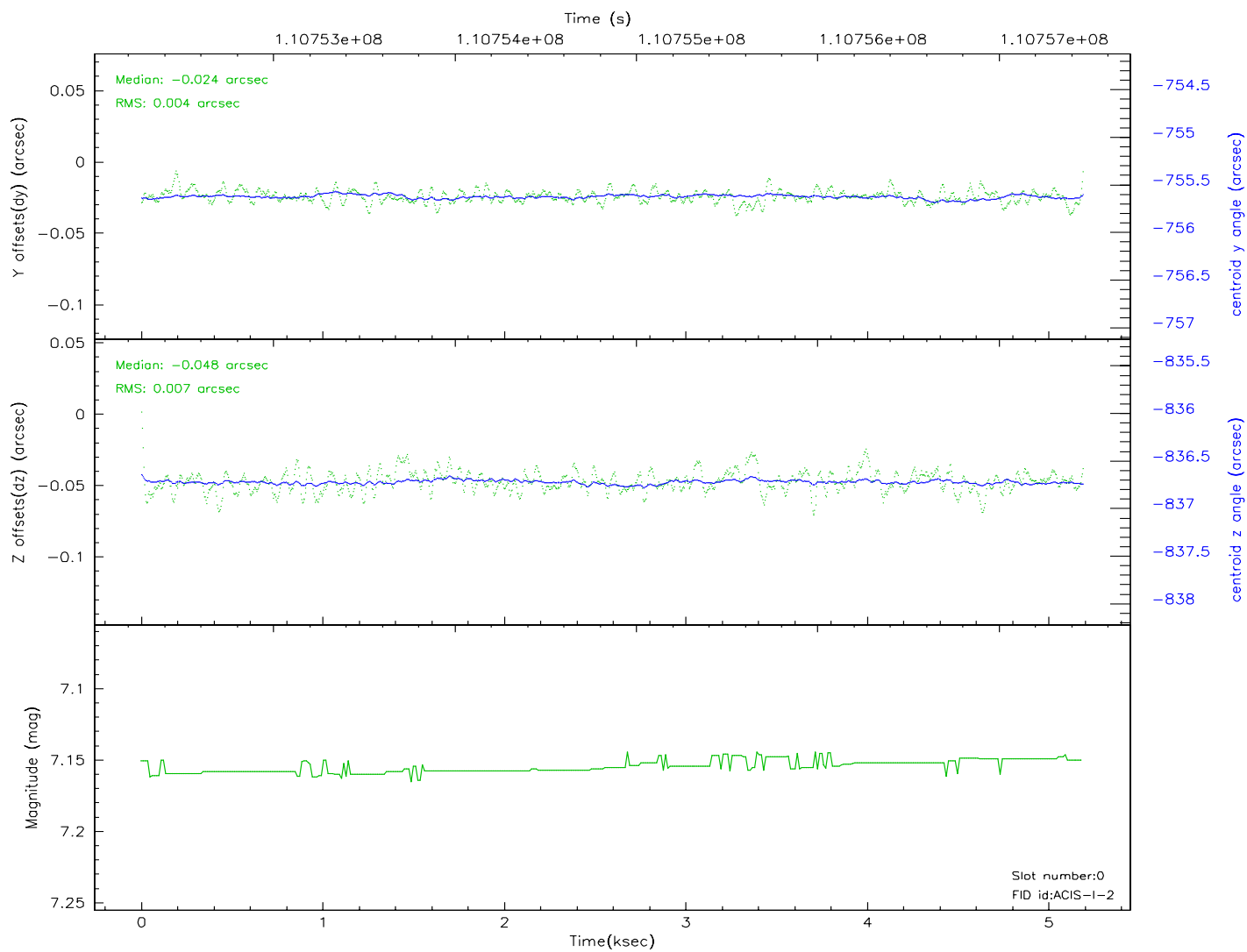
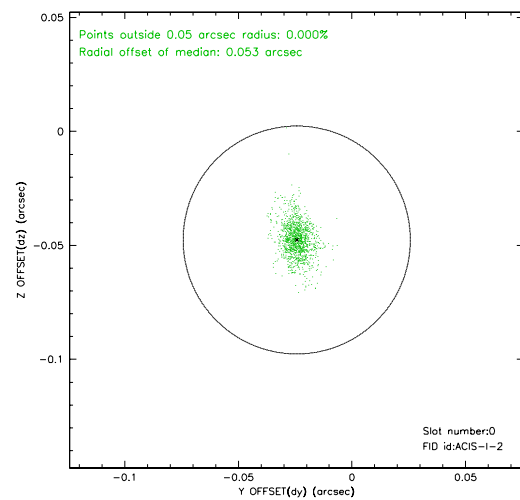
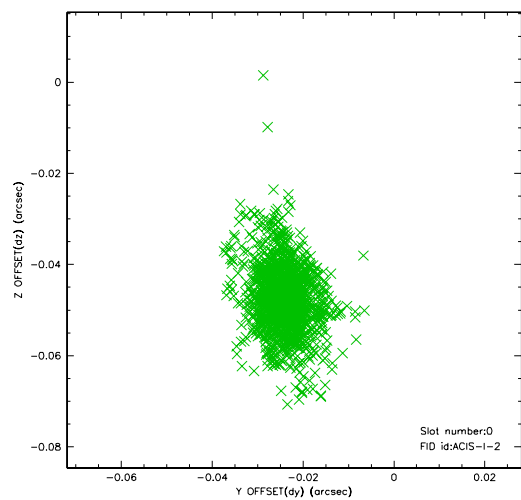


2.4.5 Slot 7

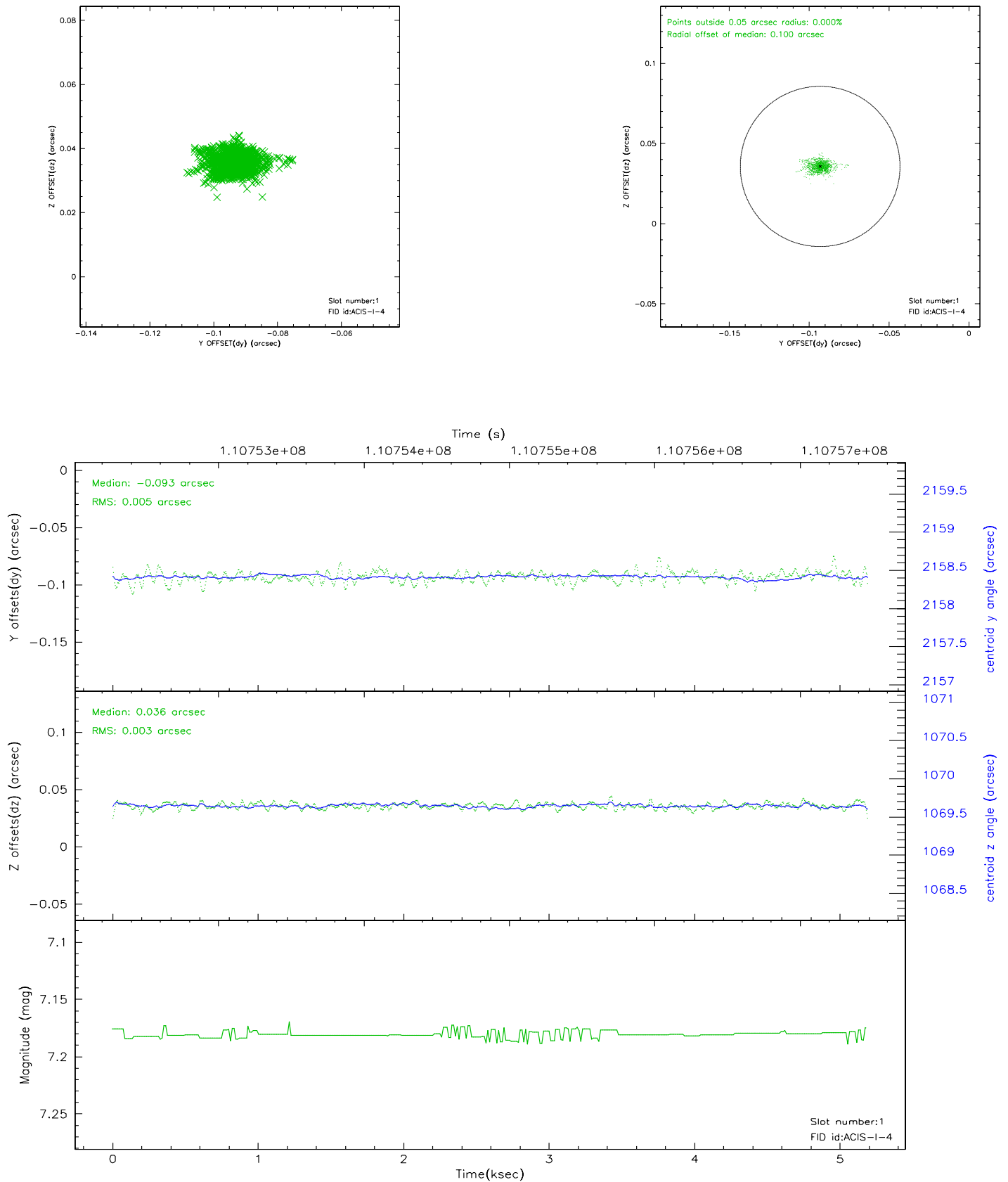


2.5 FID Slots

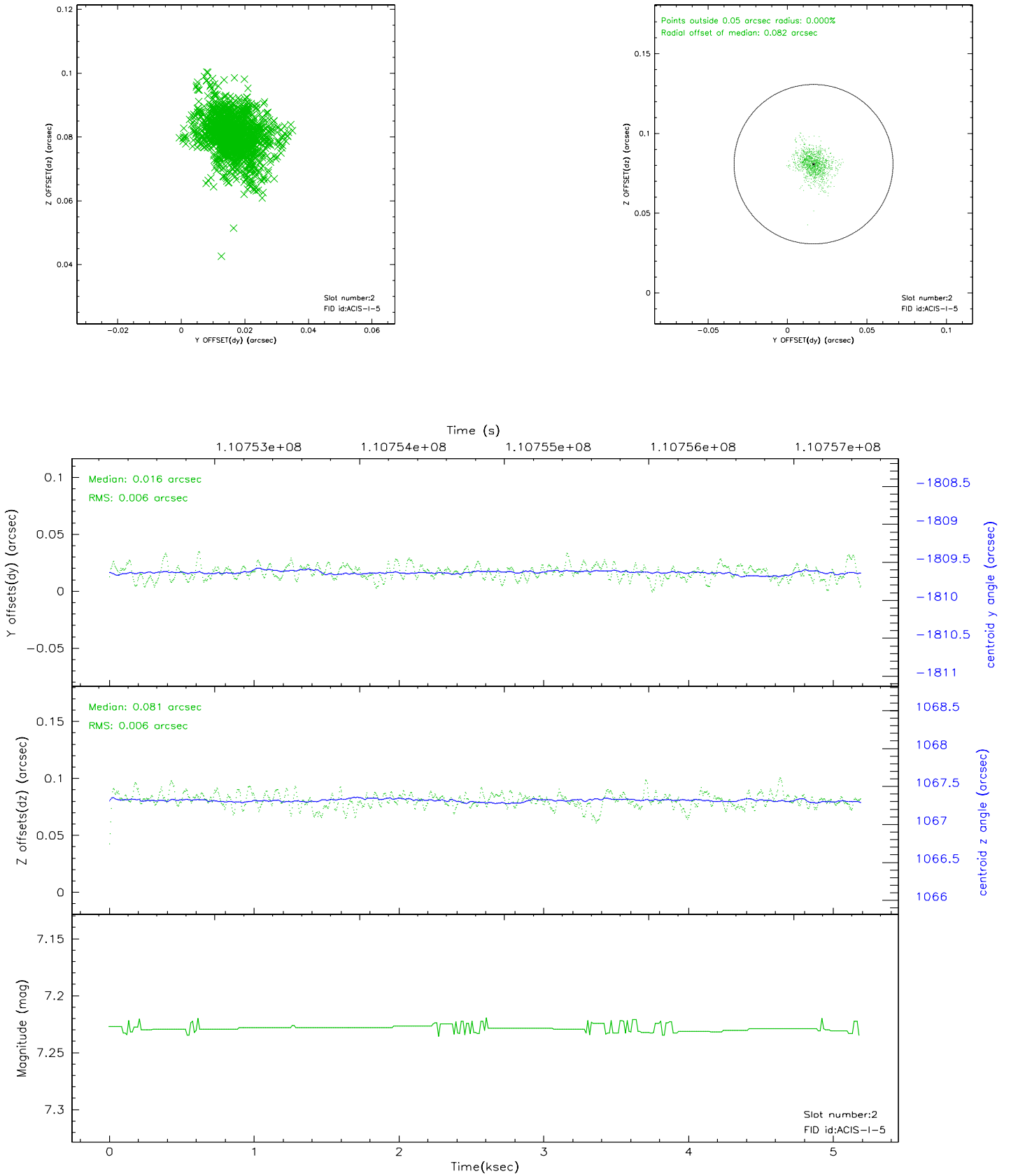
2.5.1 Slot 0



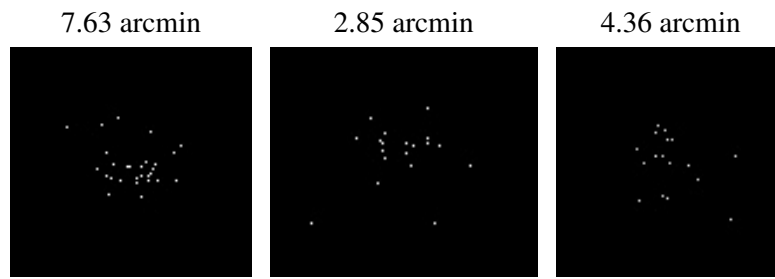
2.5.2 Slot 1



2.5.3 Slot 2



3 Point Sources



A Summary

A.1 Status

V&V Scientist	Beth Sundheim
V&V Date (YYYY-MM-DD)	2006.12.11
V&V Edition	1
V&V Disposition and Status	OK
V&V Charge Time	4.761

A.2 Comments