

V&V Reference Report

L2 ASCDS Version : 8.4.5

Observation 1686 - L2 Version 5
Chandra X-Ray Center

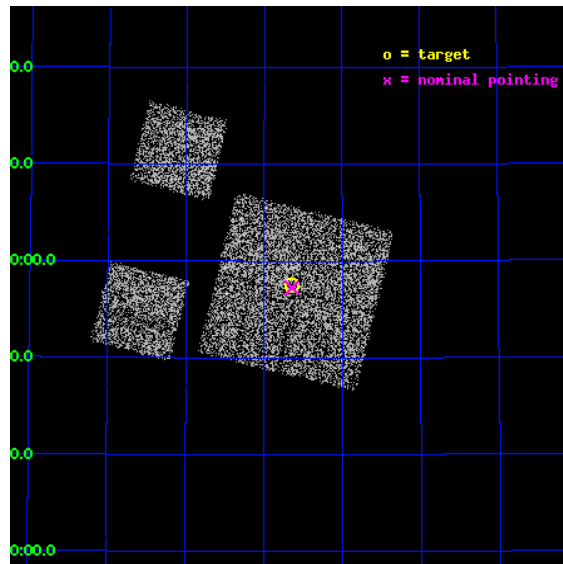
L2 Processing Date : Sep 25 2012

Contents

1	Front	2
2	OBI	3
2.1	OBI	3
2.1.1	Images	3
2.1.2	Bias	3
2.1.3	Parameters	4
2.1.4	Events	4
2.2	Compared Parameters	5
2.3	Aspect	6
2.4	Star Slots	9
2.4.1	Slot 3	9
2.4.2	Slot 4	10
2.4.3	Slot 6	11
2.4.4	Slot 7	12
2.5	FID Slots	13
2.5.1	Slot 0	13
2.5.2	Slot 1	14
2.5.3	Slot 2	15
A	Summary	16
A.1	Status	16
A.2	Comments	16

1 Front

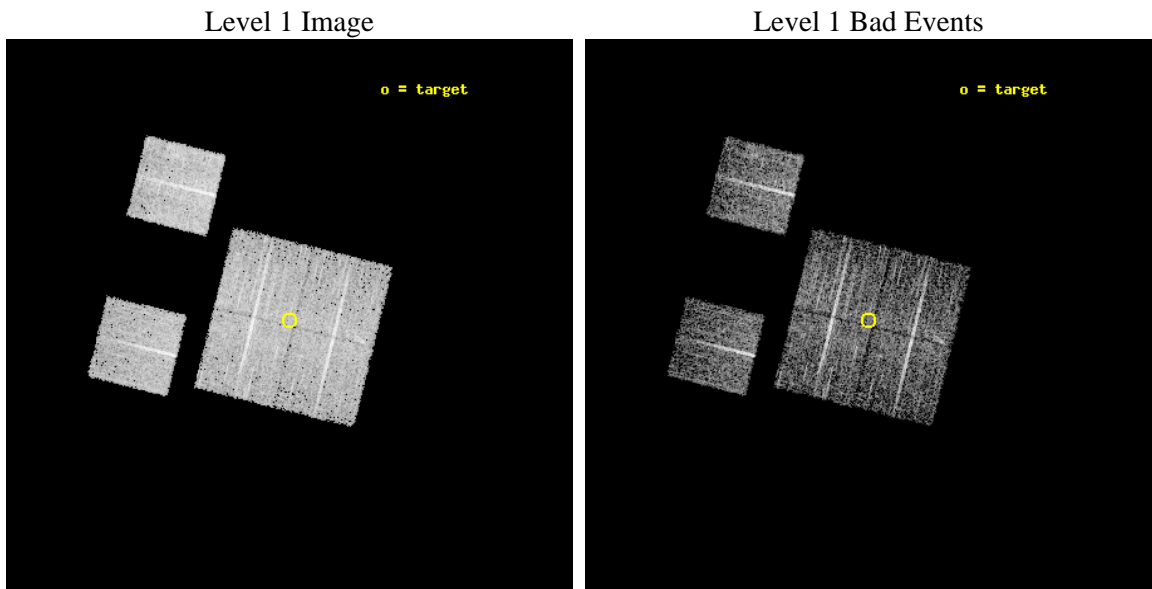
seq_num	900045	Sequence number
obs_id	1686	Observation id
title	LOCKMAN HOLE SHALLOW SURVEY	Proposal title
observer	Dr. Stephen Murray	Principal investigator
object	LOCKMAN HOLE #3	Source name
dtcycle	0	
cycle	P	events from which exps? Prim/Second/Both
ra_targ	163.6625	Observer's specified target RA [deg]
dec_targ	56.958889	Observer's specified target Dec [deg]
ra_nom	163.66107826261	Nominal RA [deg]
dec_nom	56.95422312866	Nominal Dec [deg]
roll_nom	283.89066162879	Nominal Roll [deg]
revision	5	Processing version of data
ontime	4754.8797836304	Sum of GTIs [s]
livetime	4694.6706327652	Livetime [s]
ontime0	4754.7566636205	Sum of GTIs [s]
ontime1	4754.7977235466	Sum of GTIs [s]
ontime2	4754.838763535	Sum of GTIs [s]
ontime3	4754.8797836304	Sum of GTIs [s]
ontime6	4754.71564354	Sum of GTIs [s]
ontime8	4754.9208236337	Sum of GTIs [s]
l2events	17925	Number of level 2 events



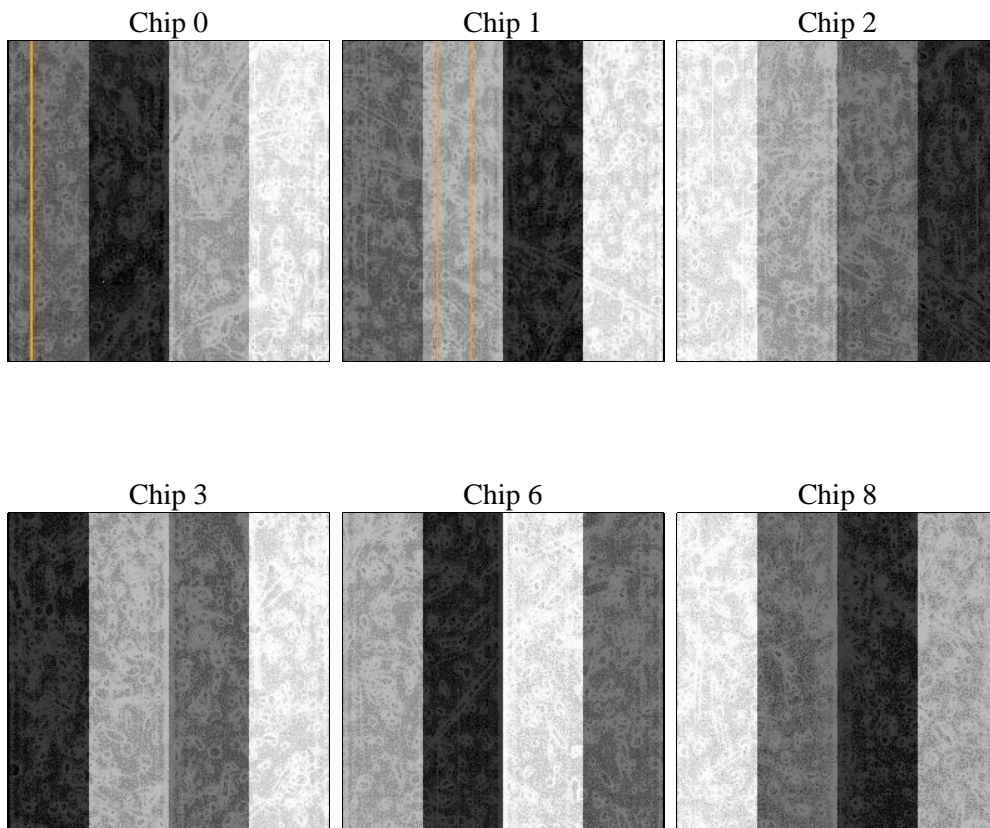
2 OBI

2.1 OBI

2.1.1 Images



2.1.2 Bias



2.1.3 Parameters

obi_num	0	Obi number	sched_exp_time	5000.000000	[s] Scheduled observation exposure time
ascdsver	8.4.5	Processing system revision	ontime	4754.8797836304	Sum of GTIs [s]
caldsver	4.5.1.1	 	ontime0	4754.7566636205	Sum of GTIs [s]
date	2012-09-25T18:27:23	Date and time of file creation	ontime1	4754.7977235466	Sum of GTIs [s]
revision	5	Processing version of data	ontime2	4754.838763535	Sum of GTIs [s]
			ontime3	4754.8797836304	Sum of GTIs [s]
			ontime6	4754.71564354	Sum of GTIs [s]
			ontime8	4754.9208236337	Sum of GTIs [s]
			l1events	187576	Number of level 1 events

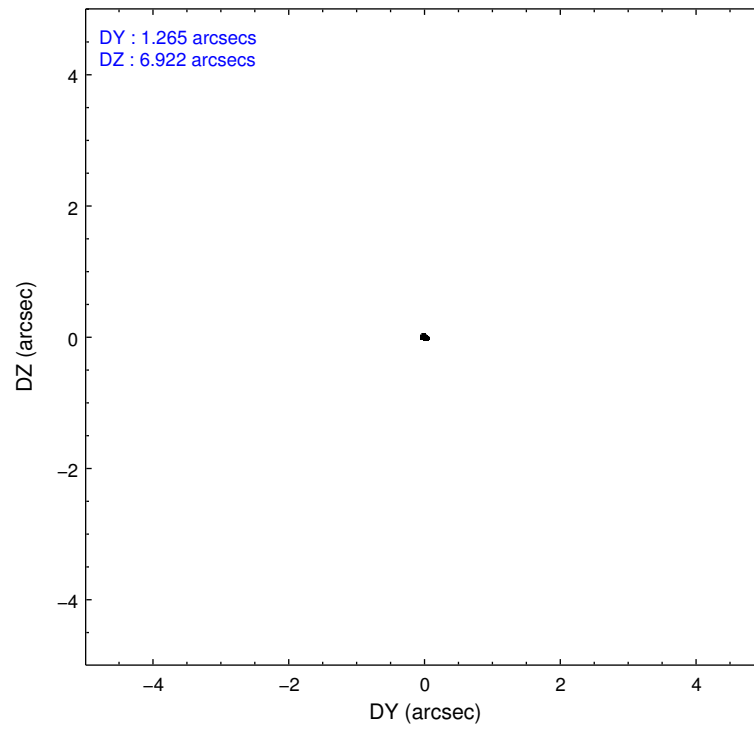
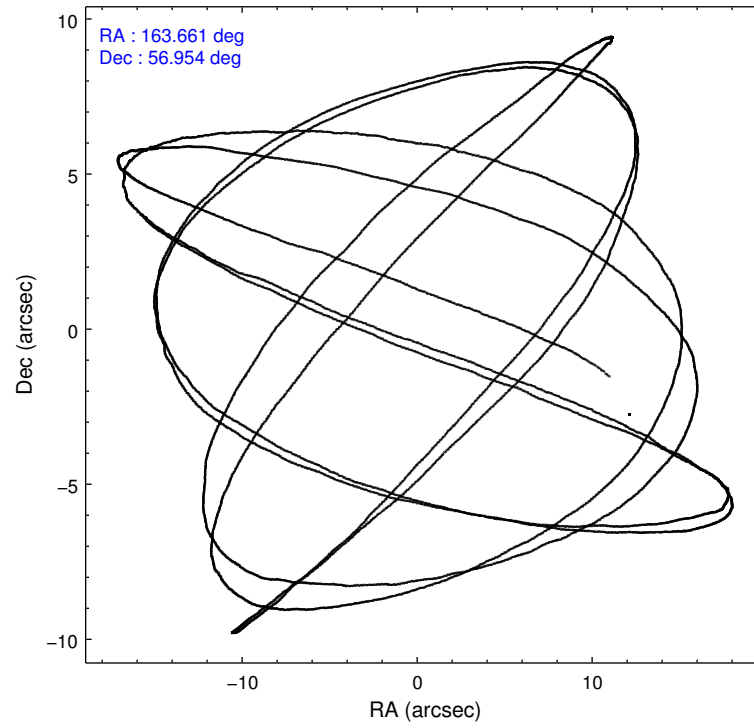
2.1.4 Events

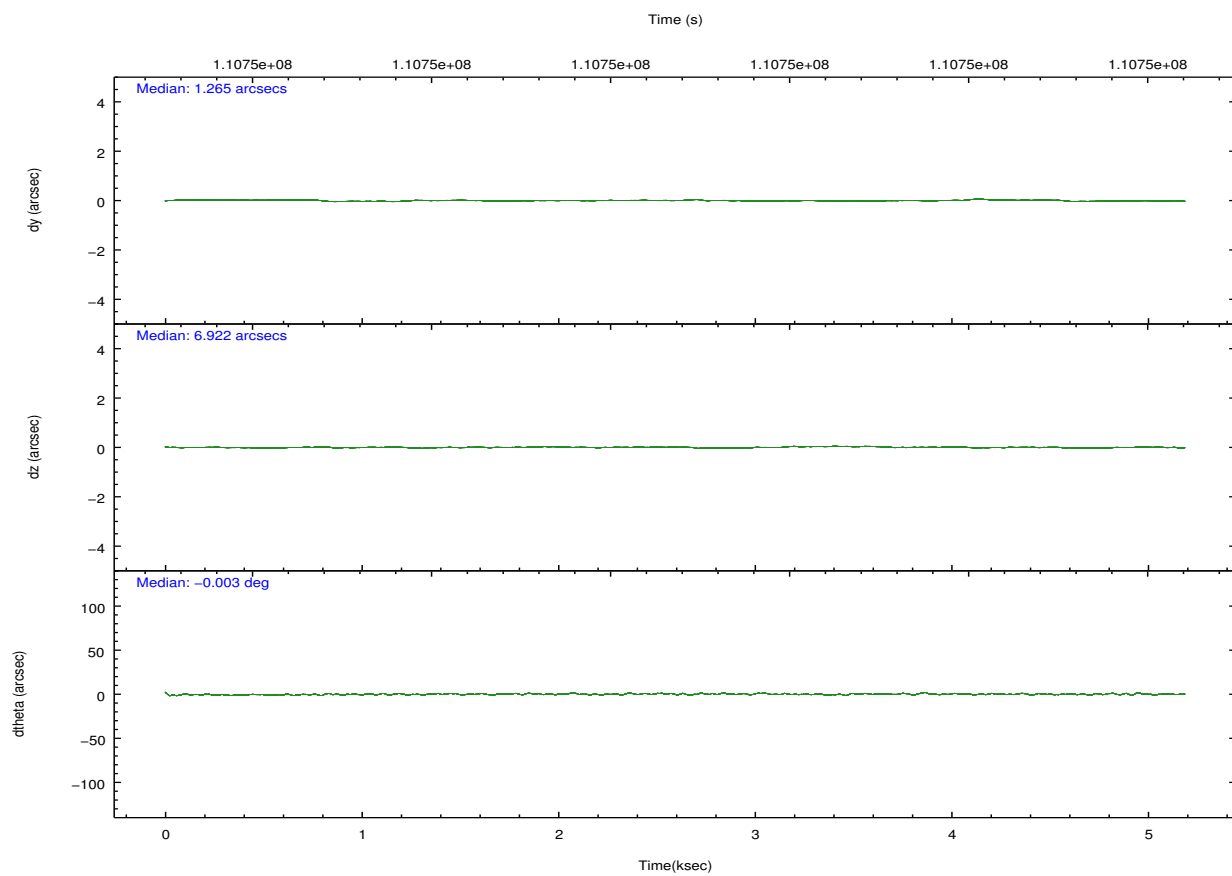
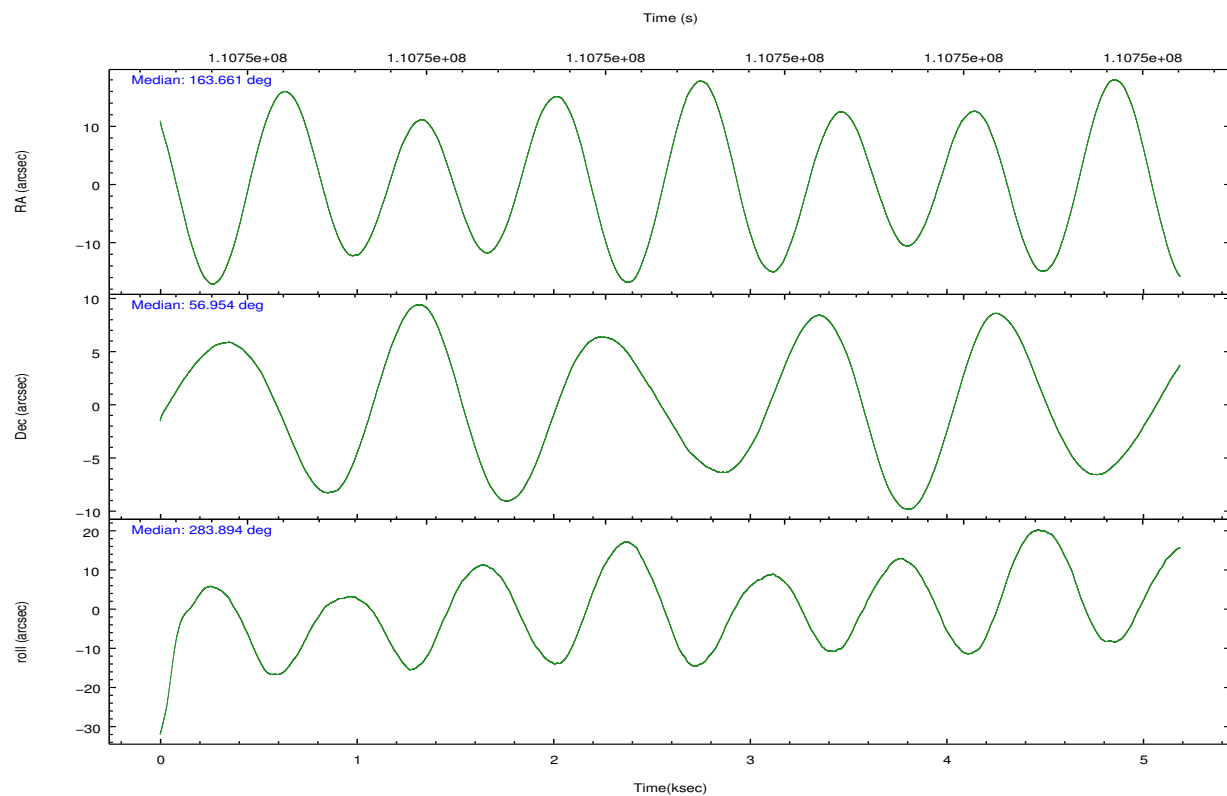
	ccd 0	ccd 1	ccd 2	ccd 3	ccd 6	ccd 8		ccd 0	ccd 1	ccd 2	ccd 3	ccd 6	ccd 8
level 1 events	27182	27931	30604	31397	29792	40670	grade 0 events	1377	1435	1421	1543	1327	2367
rejected events	23796	24305	27166	27903	26454	32853		5%	5%	4%	4%	4%	5%
rejected %	87%	87%	88%	88%	88%	80%	grade 1 events	13	8	10	15	8	21
								0%	0%	0%	0%	0%	0%
							grade 2 events	732	749	699	723	692	1654
								2%	2%	2%	2%	2%	4%
							grade 3 events	326	372	338	332	328	876
								1%	1%	1%	1%	1%	2%
							grade 4 events	319	387	367	306	335	831
								1%	1%	1%	0%	1%	2%
							grade 5 events	1045	1100	1099	1208	1224	1657
								3%	3%	3%	3%	4%	4%
							grade 6 events	635	688	616	593	658	2096
								2%	2%	2%	1%	2%	5%
							grade 7 events	22735	23192	26054	26677	25220	31168
								83%	83%	85%	84%	84%	76%

2.2 Compared Parameters

Parameter	Planned	Actual	Parameter	Planned	Actual
Instrument	ACIS	ACIS	Obspar format version number	7	7
Detector	ACIS-012368	ACIS-012368	Obspar file type	PREDICTED	ACTUAL
Grating	NONE	NONE	Obspar update status	NONE	UPDATED
Data mode	FAINT	FAINT	Number of optional ACIS chips dropped	0	0
Observation mode	POINTING	POINTING	On-chip summing requested	N	N
[deg] Pointing RA	163.626169	163.6610782626082	Subarray requested	NONE	NONE
[deg] Pointing Dec	56.973960	56.95422312866048	Alternating exposures requested	N	N
[deg] Pointing Roll	283.711239	283.8906616287852	[s] Primary exposure time	0.000000	3.2
[mm] SIM focus pos	-0.782348	-0.7809083437167272			
[mm] SIM defocus	0	0.001439871863259334			
[mm] SIM translation stage pos	-233.592463	-233.5874344608287			
[mm] SIM translation stage offset	0	-0.005018542100998502			
[s] Observation start time (MET)	110746953.184000	110746562.98534			
Observation start date	2001-07-05T19:01:29	2001-07-05T18:56:02			
[s] Observation end time (MET)	110751953.184000	110752087.22305			
Observation end date	2001-07-05T20:24:49	2001-07-05T20:28:07			
Read mode	TIMED	TIMED			

2.3 Aspect



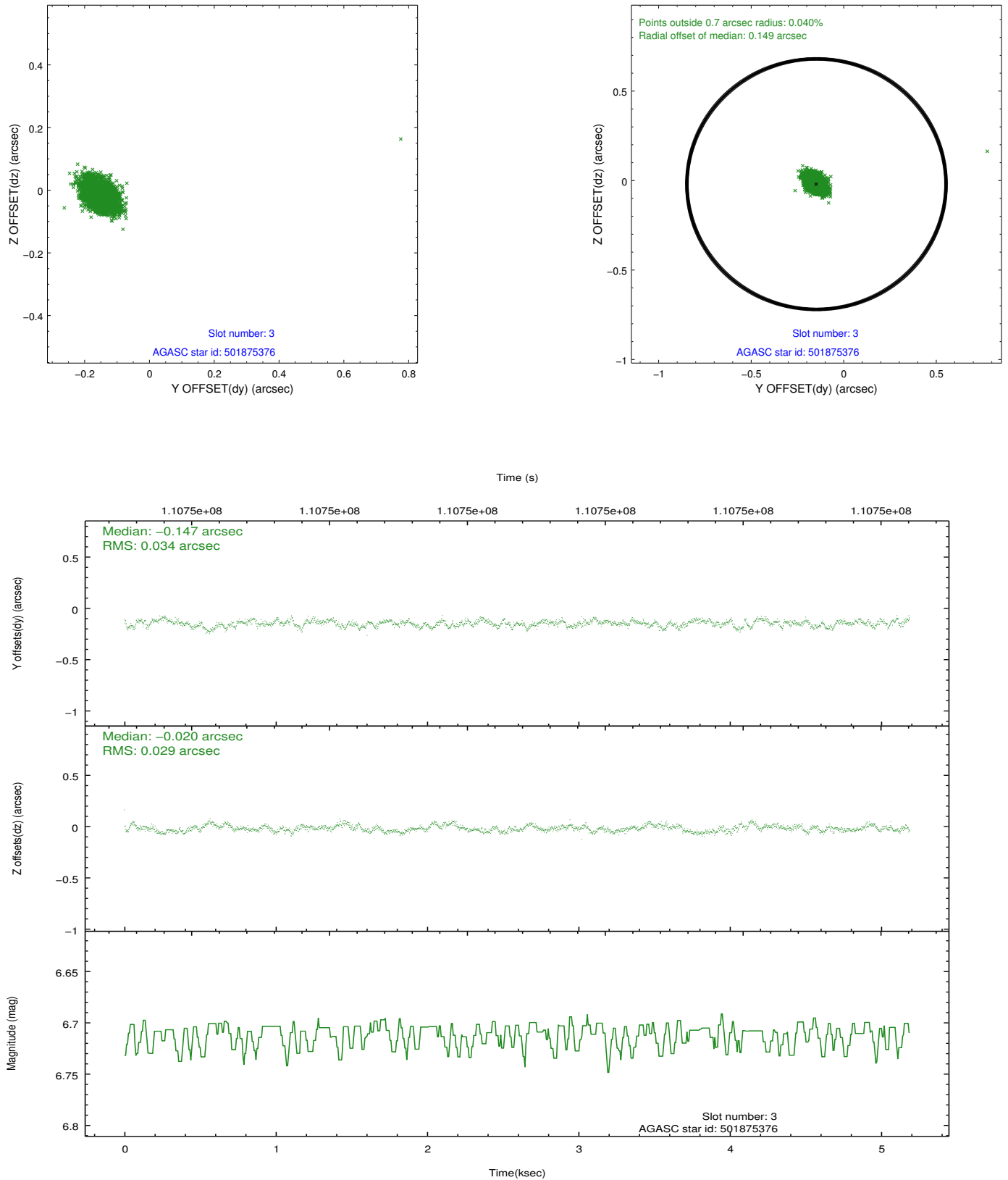


Slot Statistics

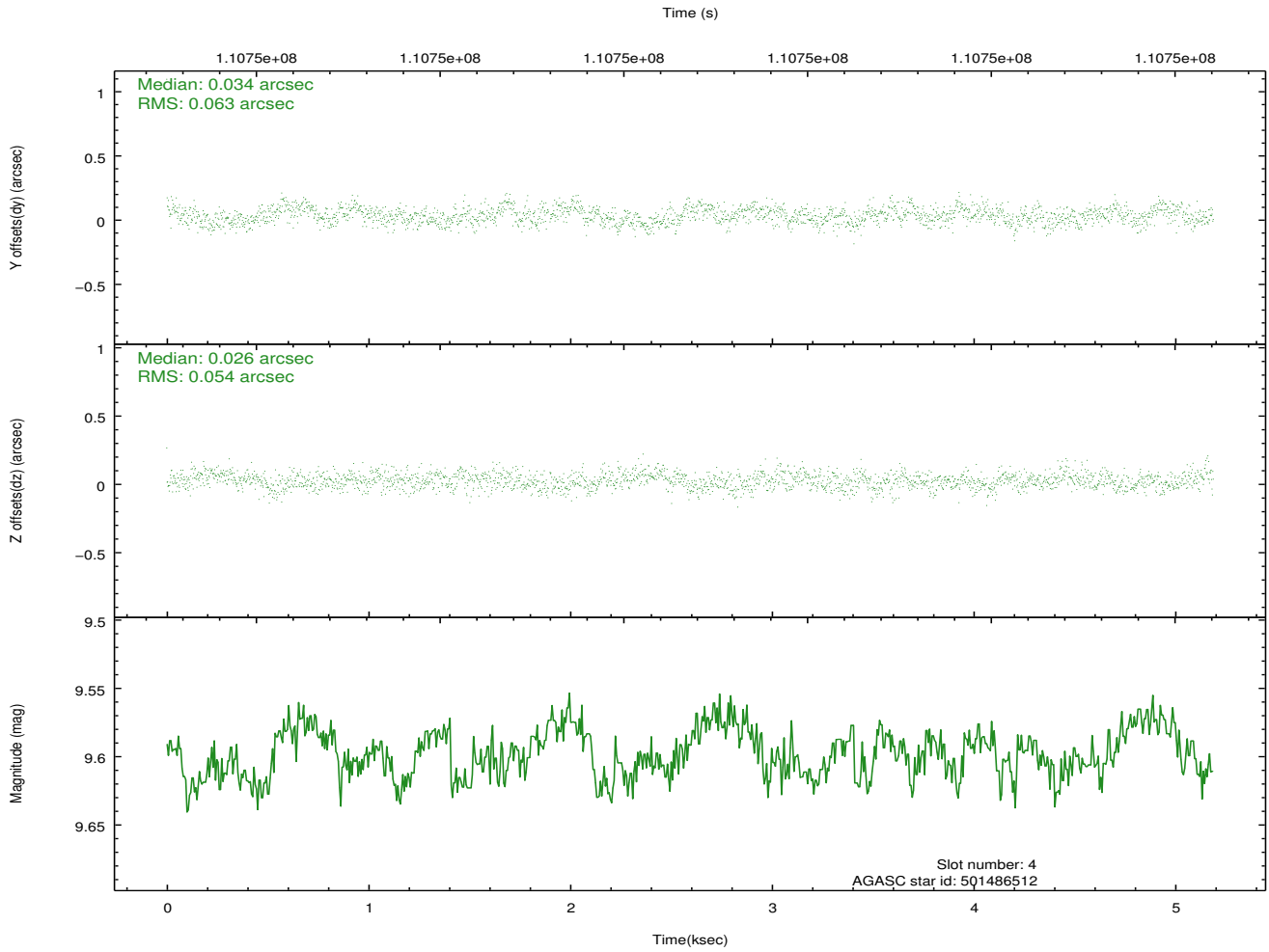
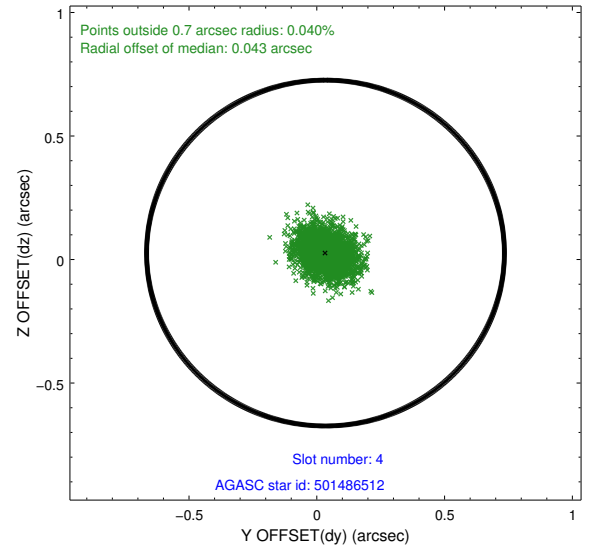
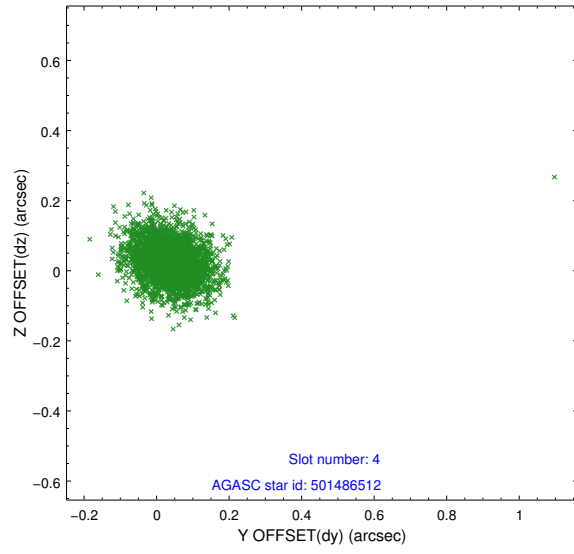
slot	status	id	mag	n_pts	med_dy	med_dz	dr1	dr2	ra	dec	mean_y	mean_z
0	FID	ACIS-I-2	7.15	1265	-0.034	-0.071	0.008	0.015	0.000000	0.000000	-755.62	-836.76
1	FID	ACIS-I-4	7.18	1265	-0.053	0.047	0.005	0.009	0.000000	0.000000	2157.87	1068.98
2	FID	ACIS-I-5	7.23	1265	-0.015	0.093	0.008	0.013	0.000000	0.000000	-1807.94	1068.16
3	GUIDE	501875376	6.71	2530	-0.147	-0.020	0.043	0.072	164.111621	57.502963	-1630.98	1363.91
4	GUIDE	501486512	9.60	2522	0.034	0.026	0.086	0.140	163.579075	56.729186	833.34	-299.27
5	OMITTED		0.00	0	0.000	0.000	0.000	0.000	0.000000	0.000000	0.00	0.00
6	GUIDE	501488296	9.77	2527	0.026	0.050	0.109	0.177	164.354320	57.421227	-1236.70	1754.11
7	GUIDE	501485952	9.85	2529	0.091	-0.054	0.101	0.165	164.221789	56.630763	1474.48	854.29

2.4 Star Slots

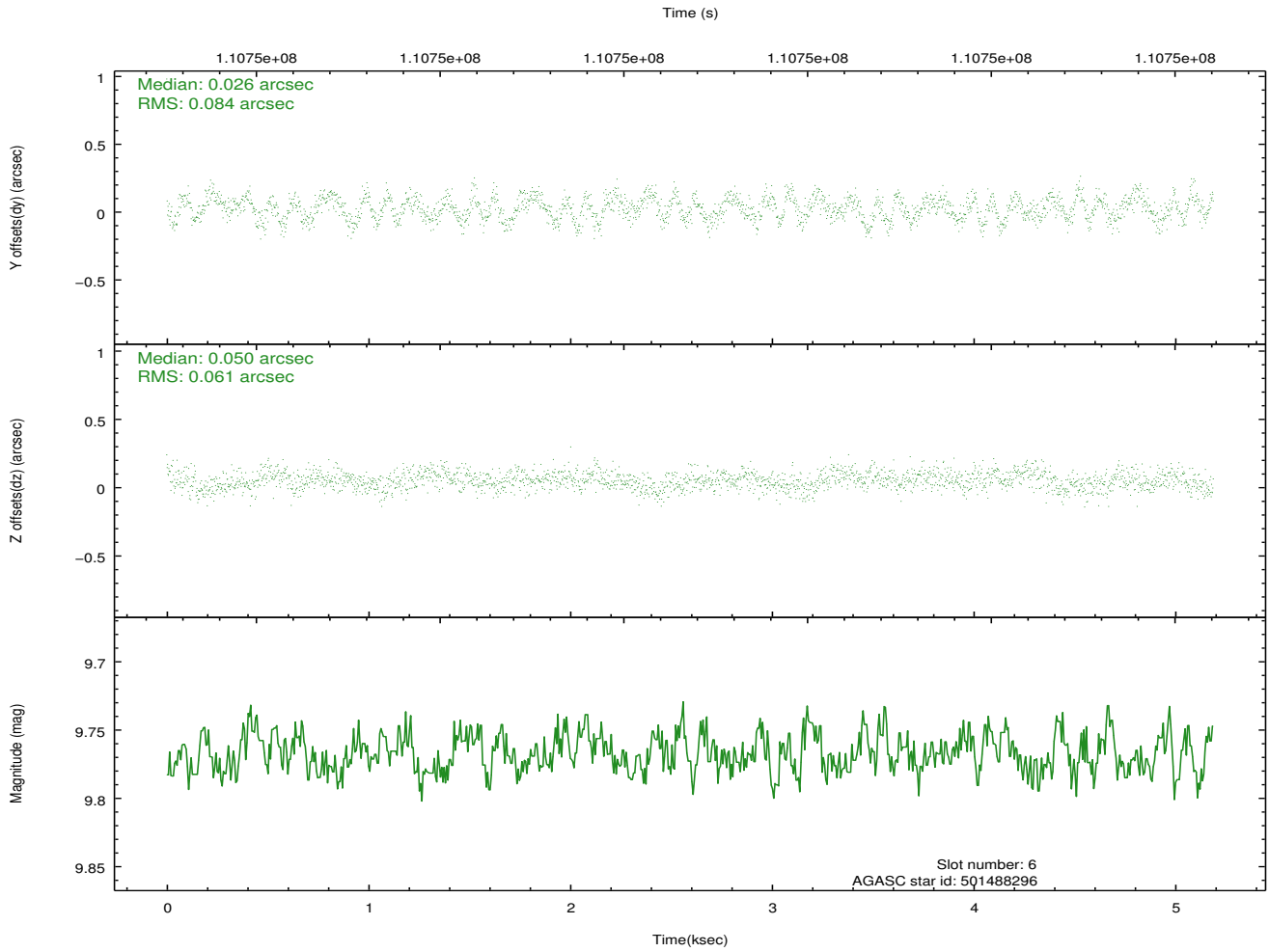
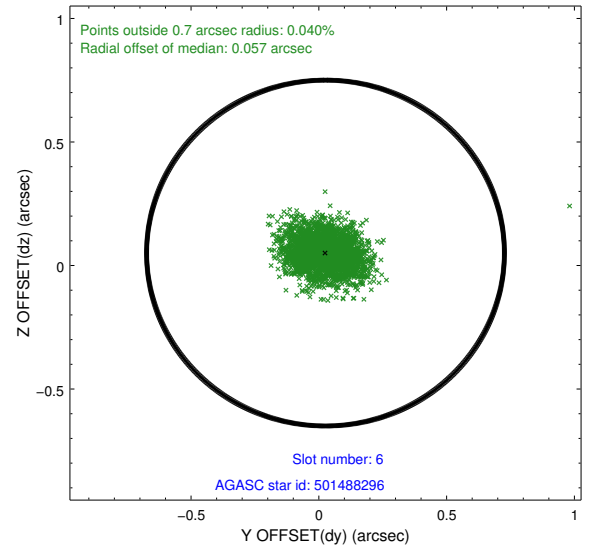
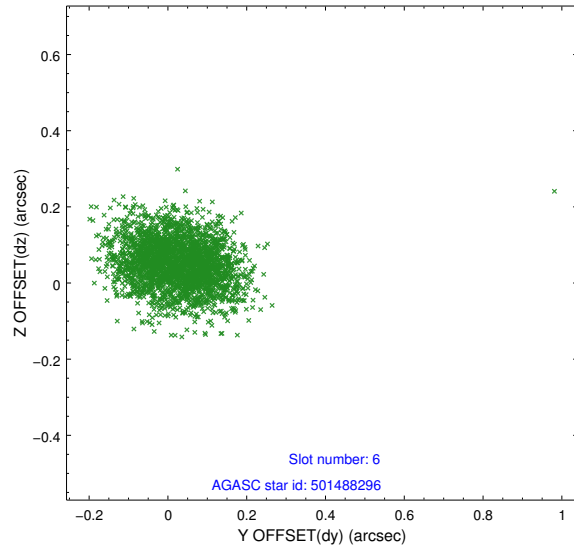
2.4.1 Slot 3



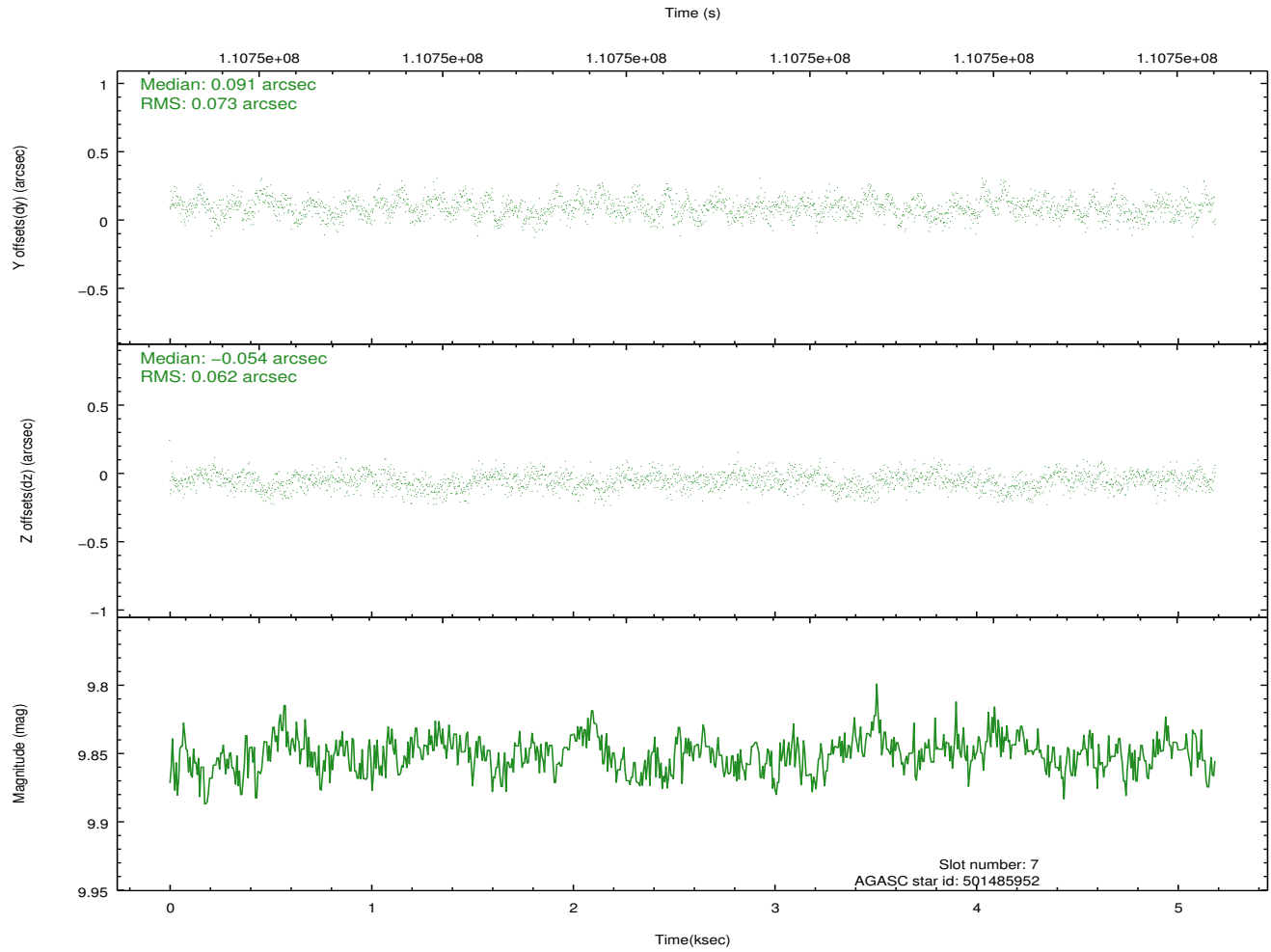
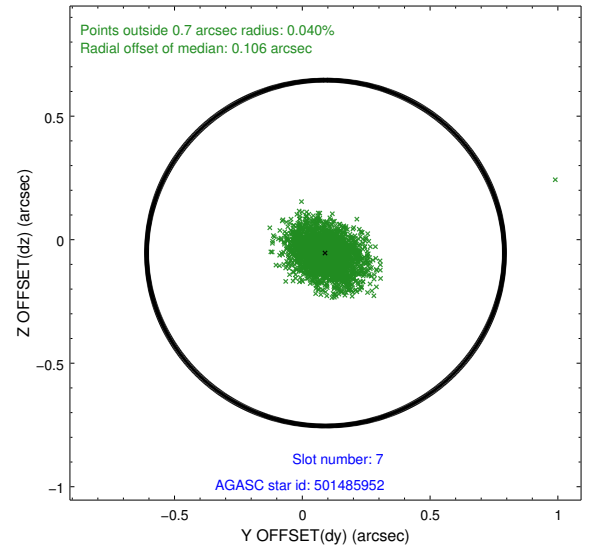
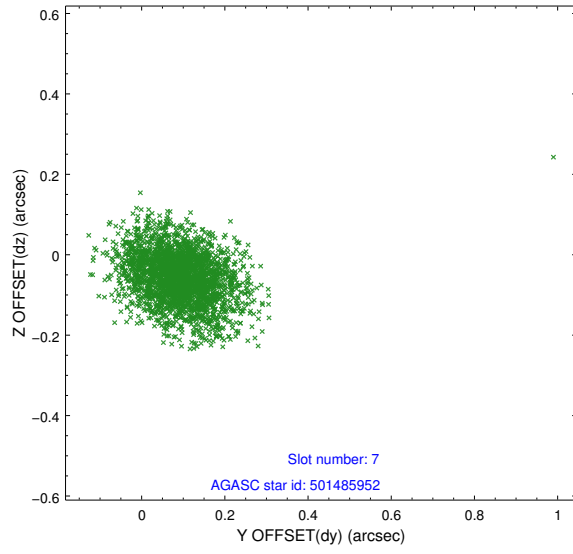
2.4.2 Slot 4



2.4.3 Slot 6

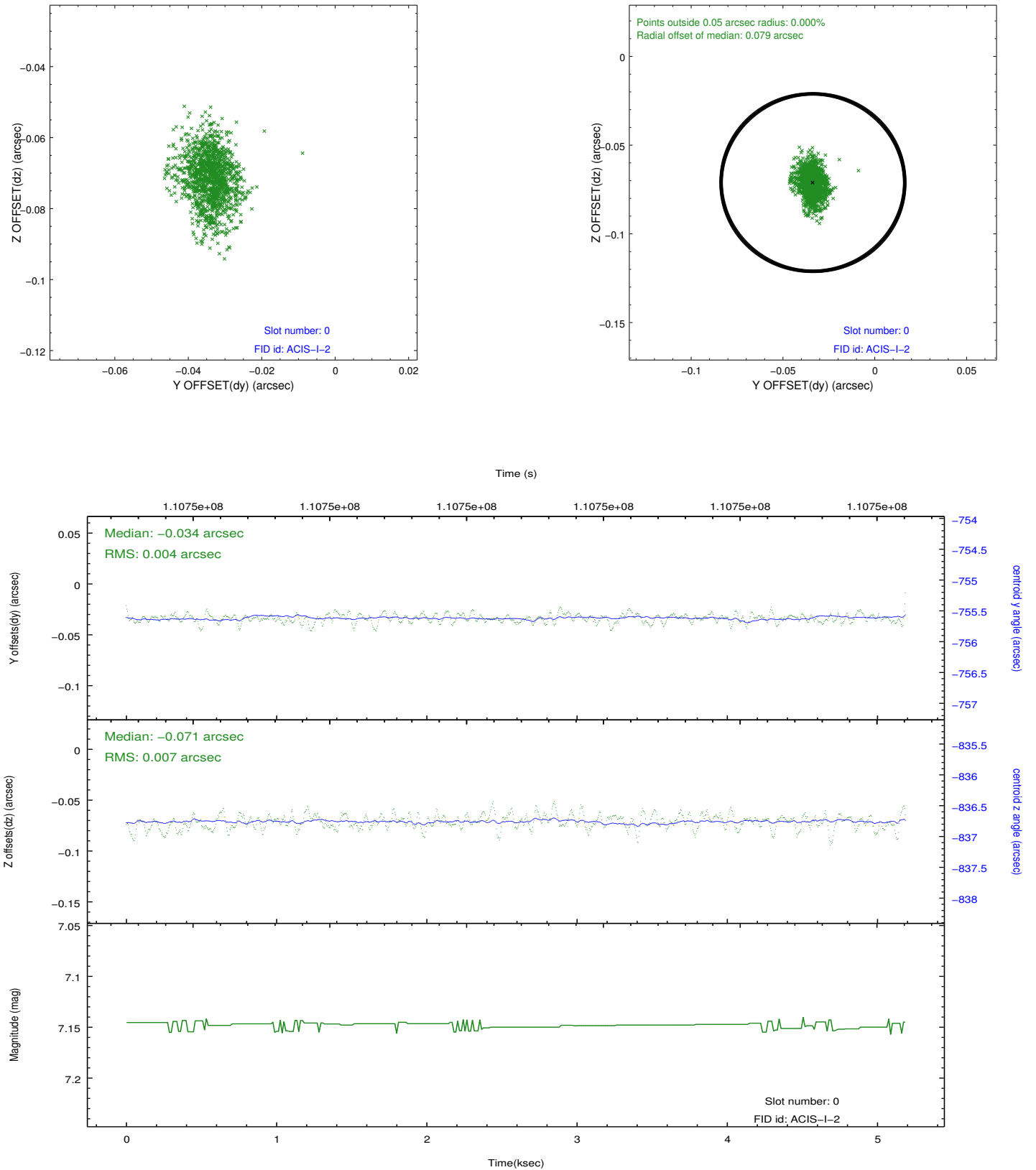


2.4.4 Slot 7

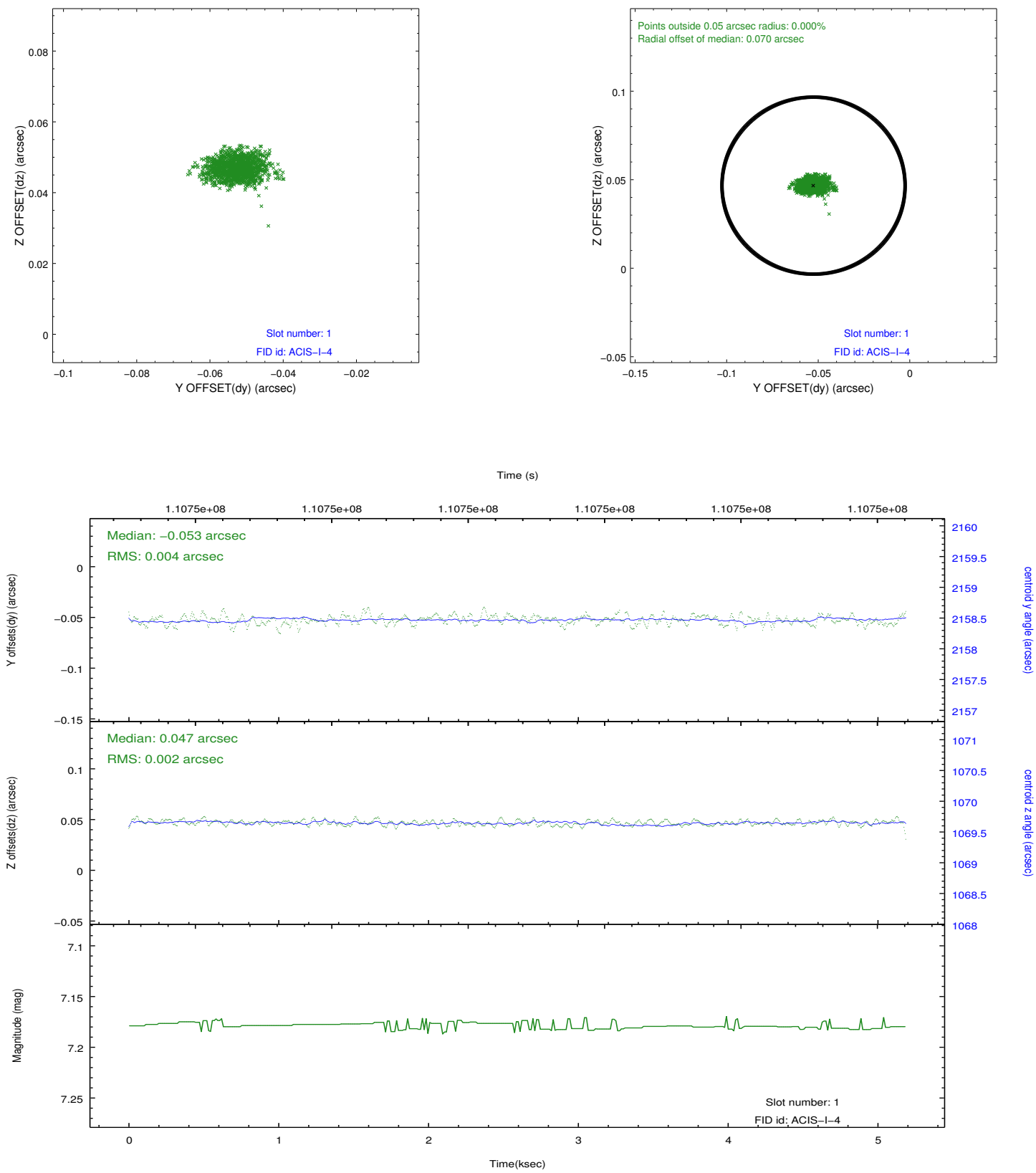


2.5 FID Slots

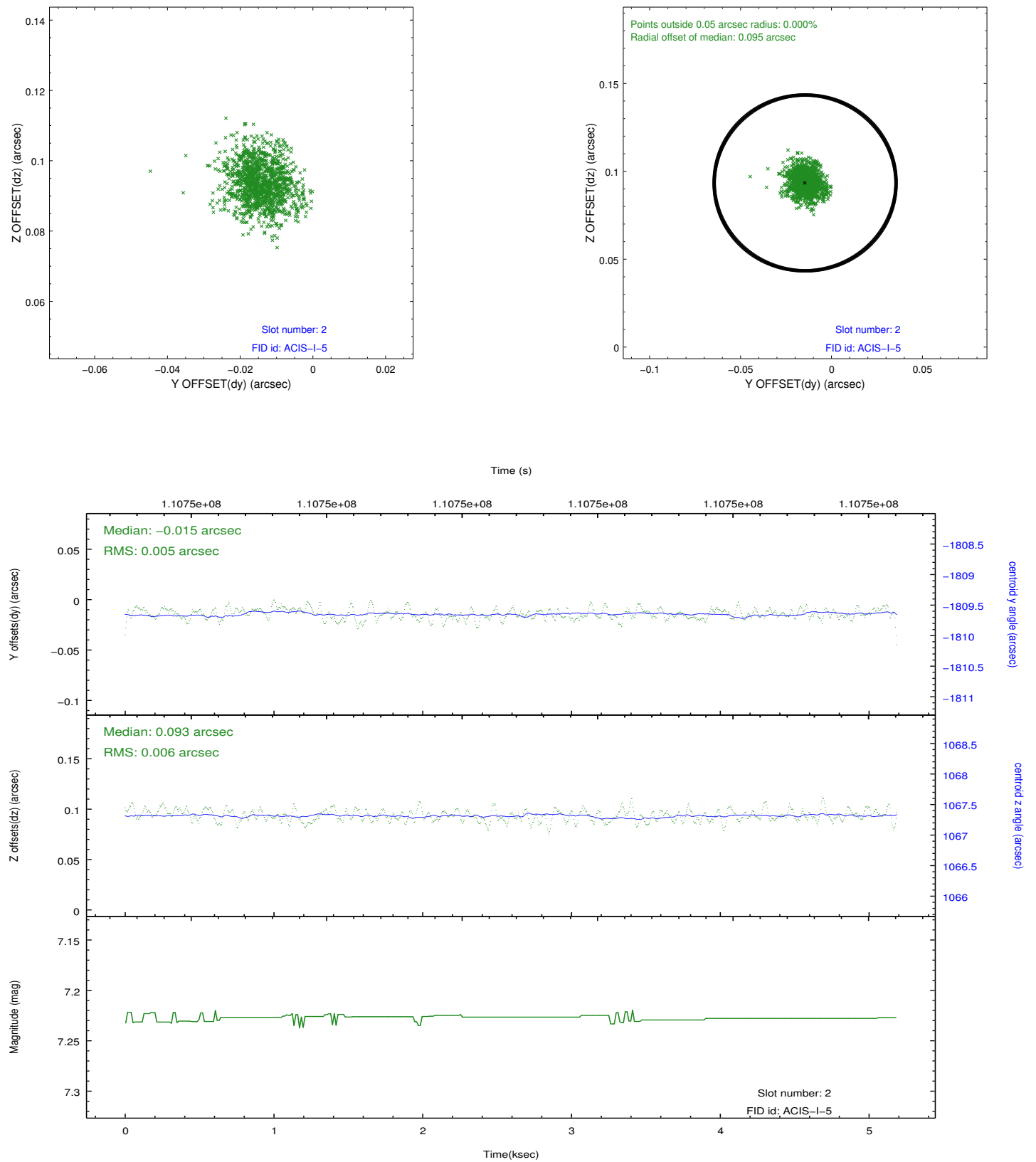
2.5.1 Slot 0



2.5.2 Slot 1



2.5.3 Slot 2



A Summary

A.1 Status

V&V Scientist	Jen Lauer
V&V Date (YYYY-MM-DD)	2012.09.27
V&V Edition	1
V&V Disposition and Status	OK
V&V Charge Time	4.7

A.2 Comments

Charge time for this ObsId remains at previous value of 4.7 ks although with the current processing the charge time would have been 4.75 ksec.

=====

The guide star in slot 5 was removed from the aspect solution due to poor data quality. The aspect solution is improved by the removal of this guide star from the solution.