

# V&V Reference Report

## L2 ASCDS Version : 7.6.9

Observation 1686 - L2 Version 001  
Chandra X-Ray Center

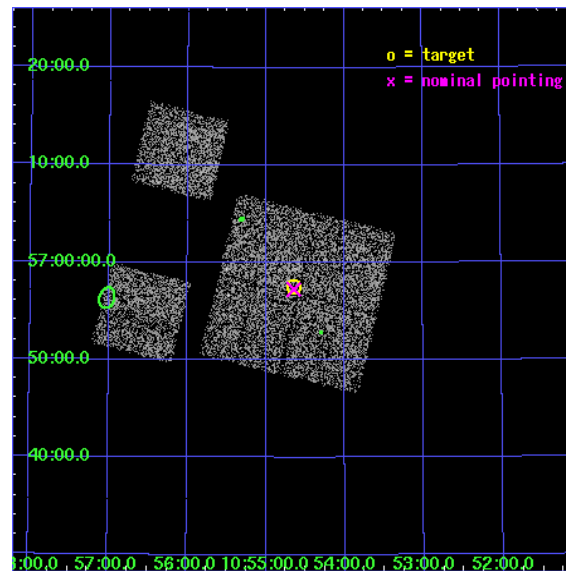
L2 Processing Date : Dec 11 2006

## Contents

<b>1</b>	<b>Front</b>	<b>2</b>
<b>2</b>	<b>OBI</b>	<b>3</b>
2.1	OBI . . . . .	3
2.1.1	Images . . . . .	3
2.1.2	Bias . . . . .	3
2.1.3	Parameters . . . . .	4
2.1.4	Events . . . . .	4
2.2	Compared Parameters . . . . .	5
2.3	Aspect . . . . .	6
2.4	Star Slots . . . . .	9
2.4.1	Slot 3 . . . . .	9
2.4.2	Slot 4 . . . . .	10
2.4.3	Slot 6 . . . . .	11
2.4.4	Slot 7 . . . . .	12
2.5	FID Slots . . . . .	13
2.5.1	Slot 0 . . . . .	13
2.5.2	Slot 1 . . . . .	14
2.5.3	Slot 2 . . . . .	15
<b>3</b>	<b>Point Sources</b>	<b>16</b>
<b>A</b>	<b>Summary</b>	<b>17</b>
A.1	Status . . . . .	17
A.2	Comments . . . . .	17

# 1 Front

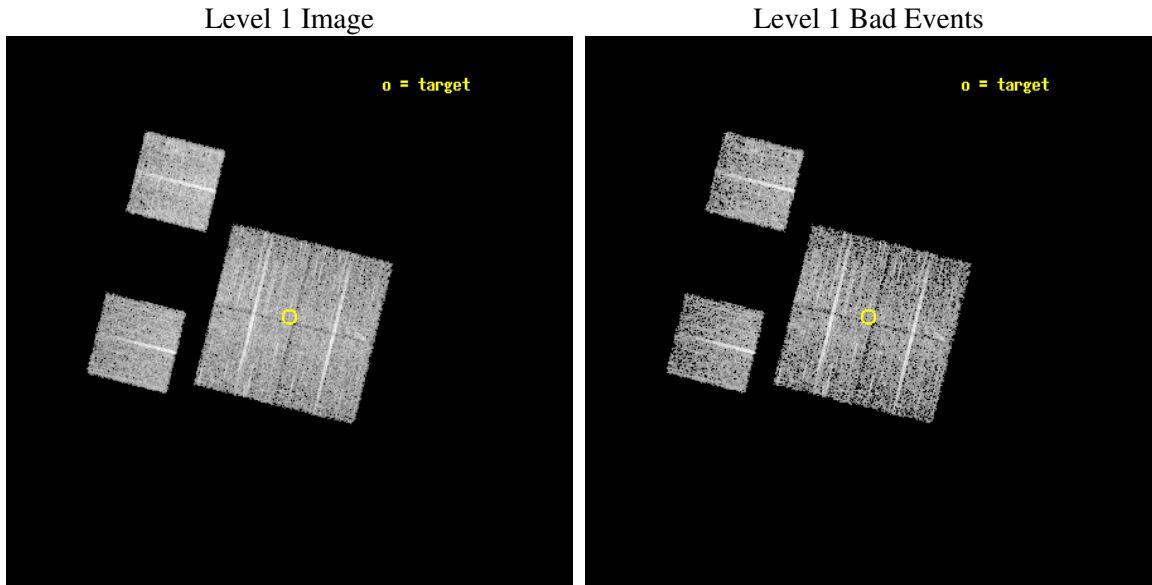
seq_num	900045
obs_id	1686
title	LOCKMAN HOLE SHALLOW SURVEY
observer	Dr. Stephen Murray
object	LOCKMAN HOLE #3
dtcycle	0
cycle	P
ra_targ	163.6625
dec_targ	56.958889
ra_nom	163.66107826261
dec_nom	56.954223128661
roll_nom	283.89066162879
revision	3
ontime	4755.159054175
livetime	4694.946367018
ontime0	4755.159074083
ontime1	4755.159074083
ontime2	4755.159074083
ontime3	4755.159054175
ontime6	4755.159074083
ontime8	4755.159054175
l2events	18095



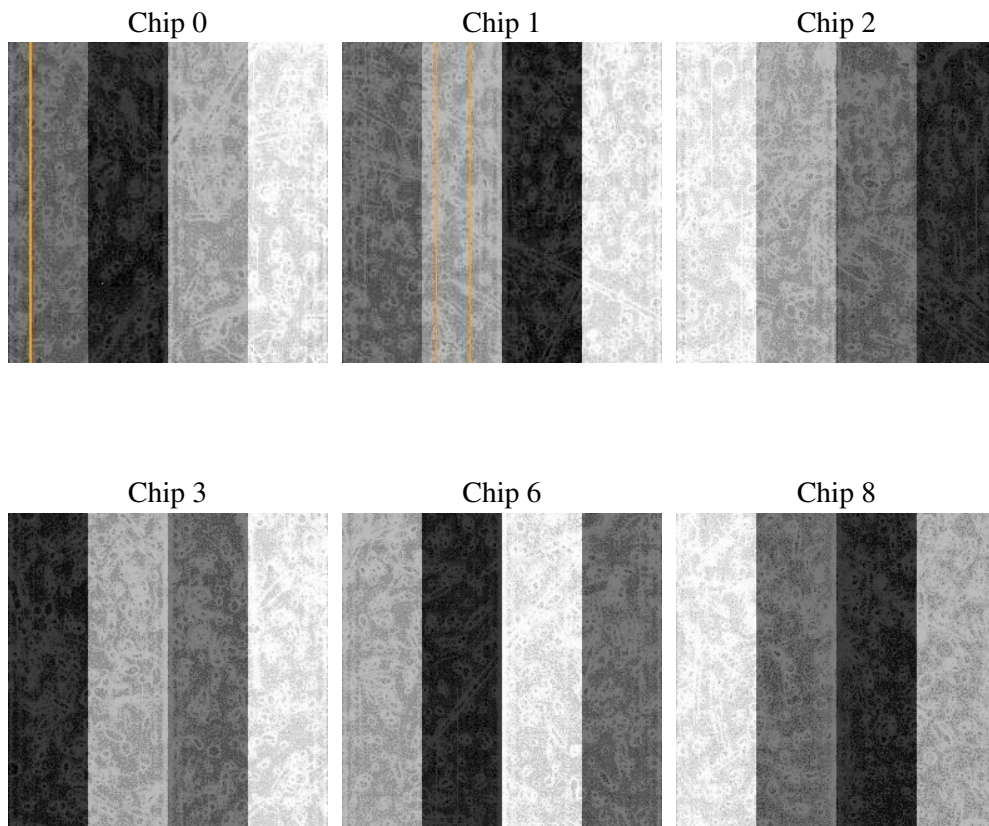
## 2 OBI

### 2.1 OBI

#### 2.1.1 Images



#### 2.1.2 Bias



### 2.1.3 Parameters

obi_num	0
ascdsver	7.6.9
caldsver	3.2.4
date	2006-12-11T20:36:18
revision	3

sched_exp_time	5000.000000
ontime	4761.0245959163
ontime0	4761.0245959014
ontime1	4761.0246158242
ontime2	4761.0246457309
ontime3	4761.0245959163
ontime6	4761.0246457309
ontime8	4761.0246258229
l1events	187576

### 2.1.4 Events

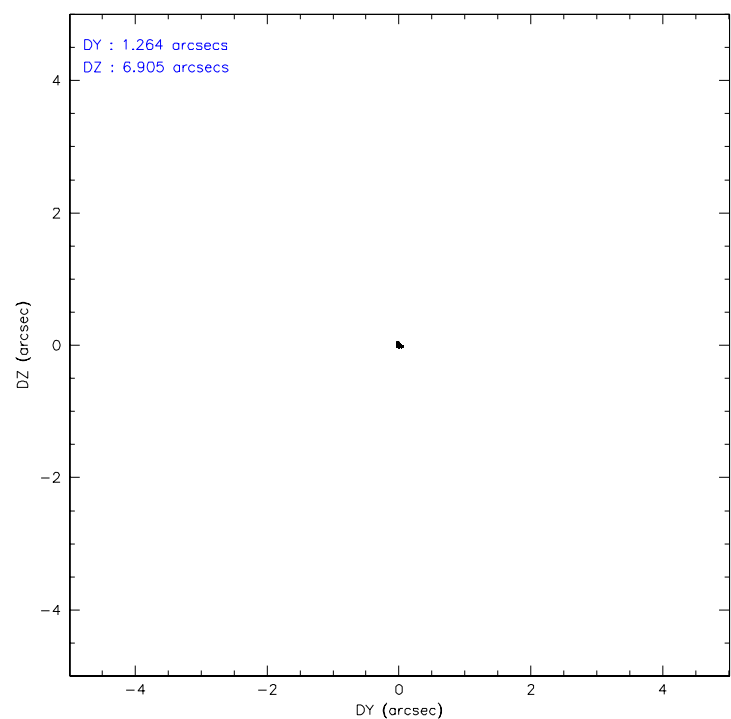
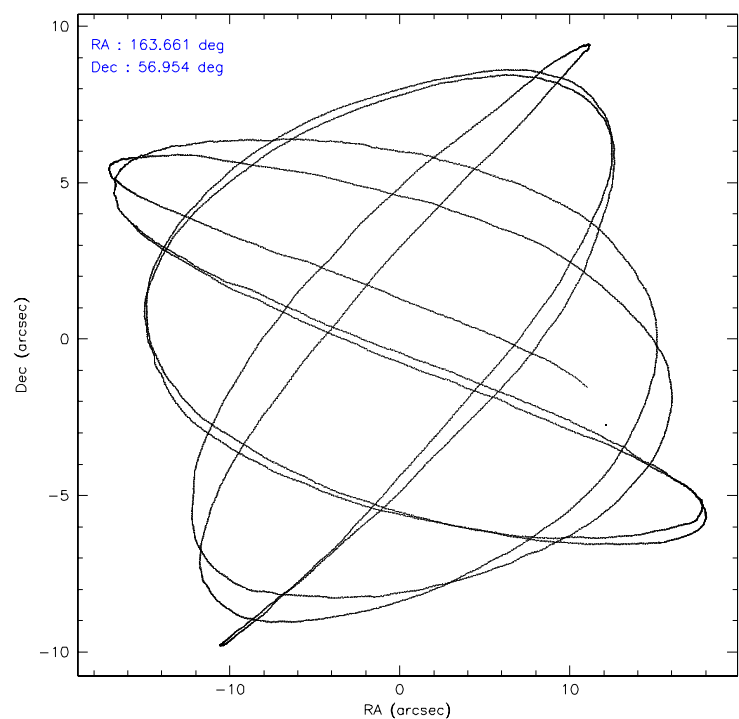
	ccd 0	ccd 1	ccd 2	ccd 3	ccd 6	ccd 8
level 1 events	27182	27931	30604	31397	29792	40670
rejected events	23794	24304	27165	27901	26453	32851
rejected %	87%	87%	88%	88%	88%	80%

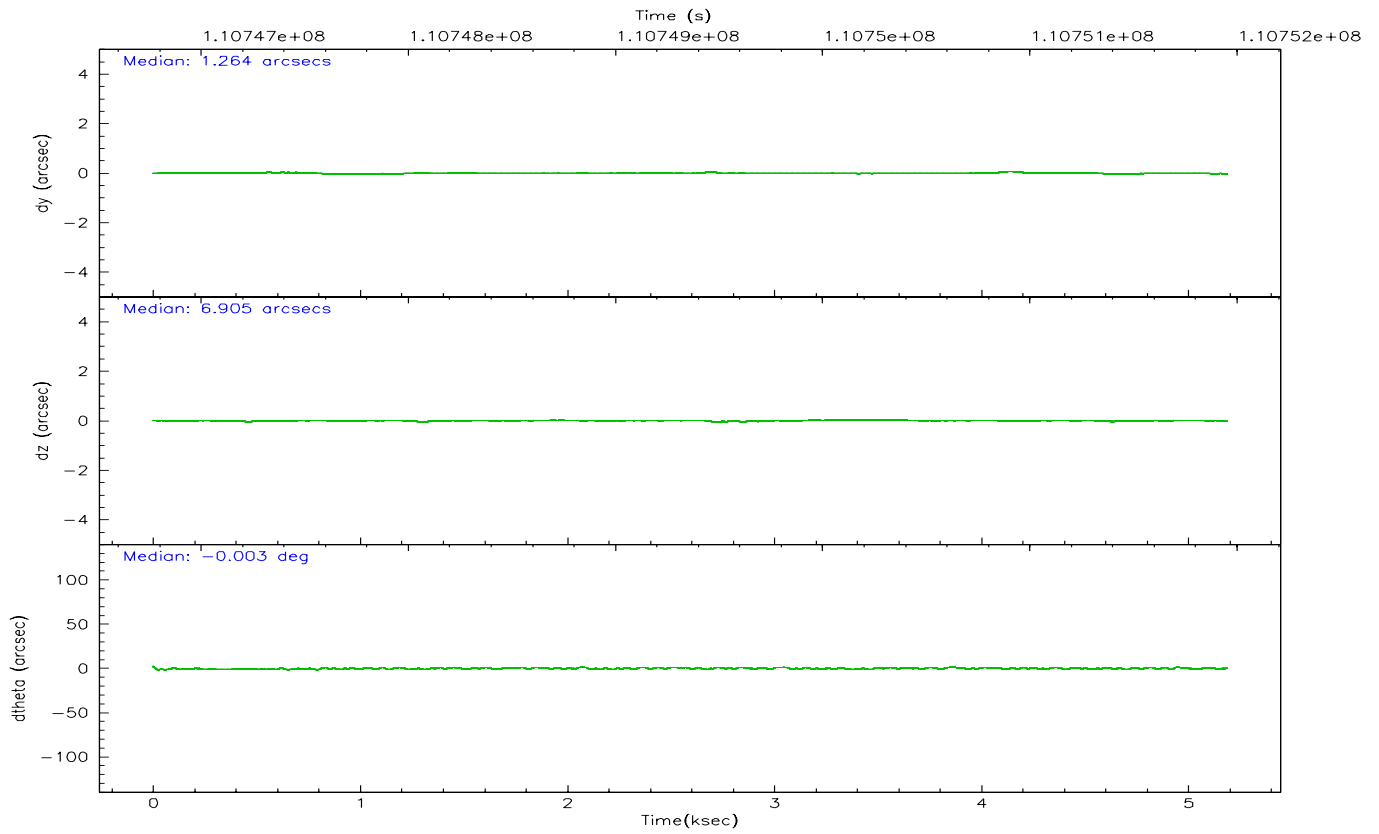
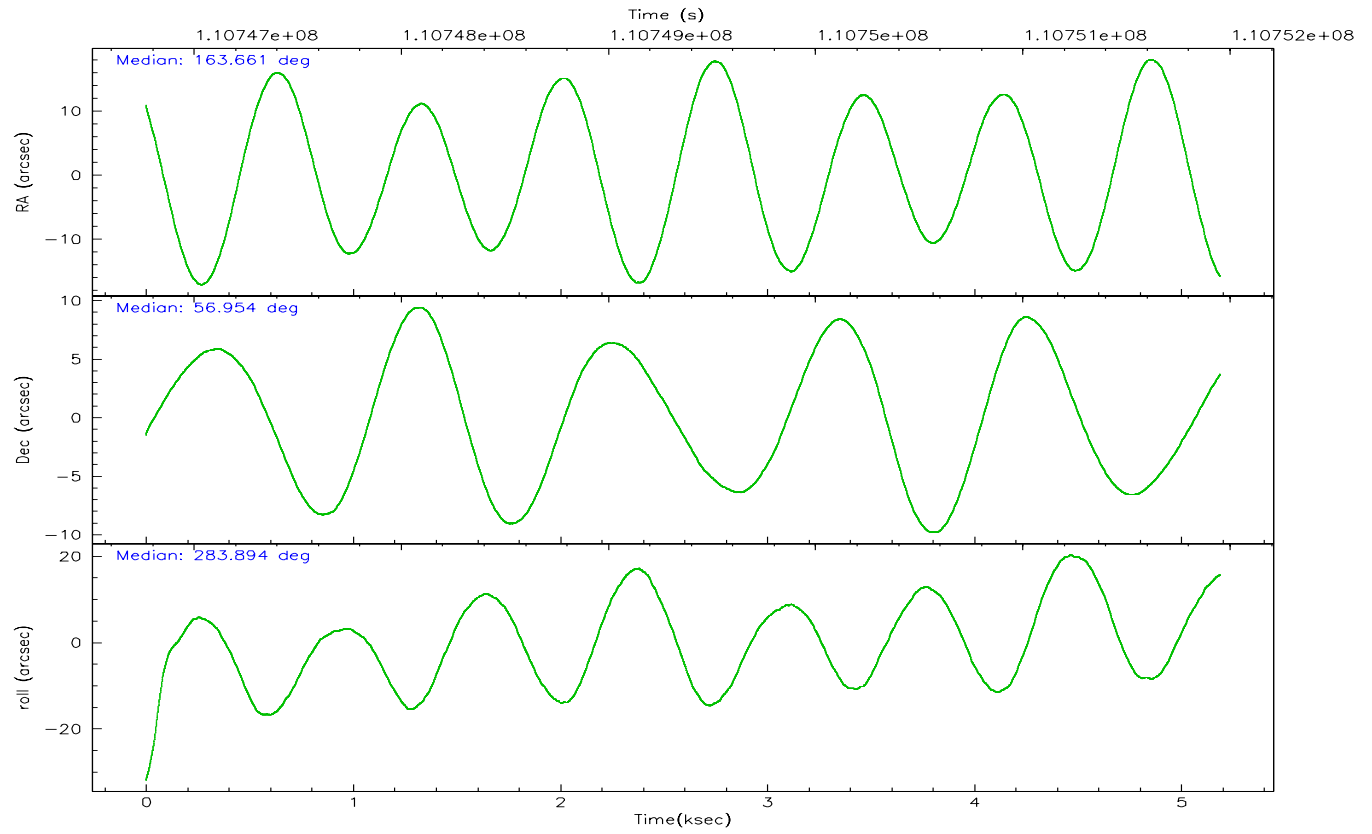
	ccd 0	ccd 1	ccd 2	ccd 3	ccd 6	ccd 8
grade 0 events	1377	1435	1424	1543	1328	2368
	5%	5%	4%	4%	4%	5%
grade 1 events	13	8	10	15	8	21
	0%	0%	0%	0%	0%	0%
grade 2 events	732	749	696	723	691	1653
	2%	2%	2%	2%	2%	4%
grade 3 events	326	372	338	332	328	877
	1%	1%	1%	1%	1%	2%
grade 4 events	319	387	367	306	335	831
	1%	1%	1%	0%	1%	2%
grade 5 events	1045	1100	1099	1209	1224	1657
	3%	3%	3%	3%	4%	4%
grade 6 events	636	688	616	593	658	2095
	2%	2%	2%	1%	2%	5%
grade 7 events	22734	23192	26054	26676	25220	31168
	83%	83%	85%	84%	84%	76%

## 2.2 Compared Parameters

Parameter	Planned	Actual	Parameter	Planned	Actual
Instrument	ACIS	ACIS	Obspar format version number	6	6
Detector	ACIS-012368	ACIS-012368	Obspar file type	PREDICTED	ACTUAL
Grating	NONE	NONE	Obspar update status	NONE	UPDATED
Data mode	FAINT	FAINT	Number of optional ACIS chips dropped	0	0
Observation mode	POINTING	POINTING	On-chip summing requested	N	N
Pointing RA	163.626169	163.6610782626082	Subarray requested	NONE	NONE
Pointing Dec	56.973960	56.9542231286605	Alternating exposures requested	N	N
Pointing Roll	283.711239	283.8906616287852	Primary exposure time	0.000000	3.2
SIM focus pos (mm)	-0.782348	-0.7809083437167272			
SIM defocus (mm)	0	0.001439871863259334			
SIM translation stage pos (mm)	-233.592463	-233.5874344608287			
SIM translation stage offset (mm)	0	-0.005018542100998502			
Observation start time	110746953.184000	110746562.98534			
Observation start date	2001-07-05T19:01:29	2001-07-05T18:56:02			
Observation end time	110751953.184000	110752087.22305			
Observation end date	2001-07-05T20:24:49	2001-07-05T20:28:07			
Read mode	TIMED	TIMED			

## 2.3 Aspect





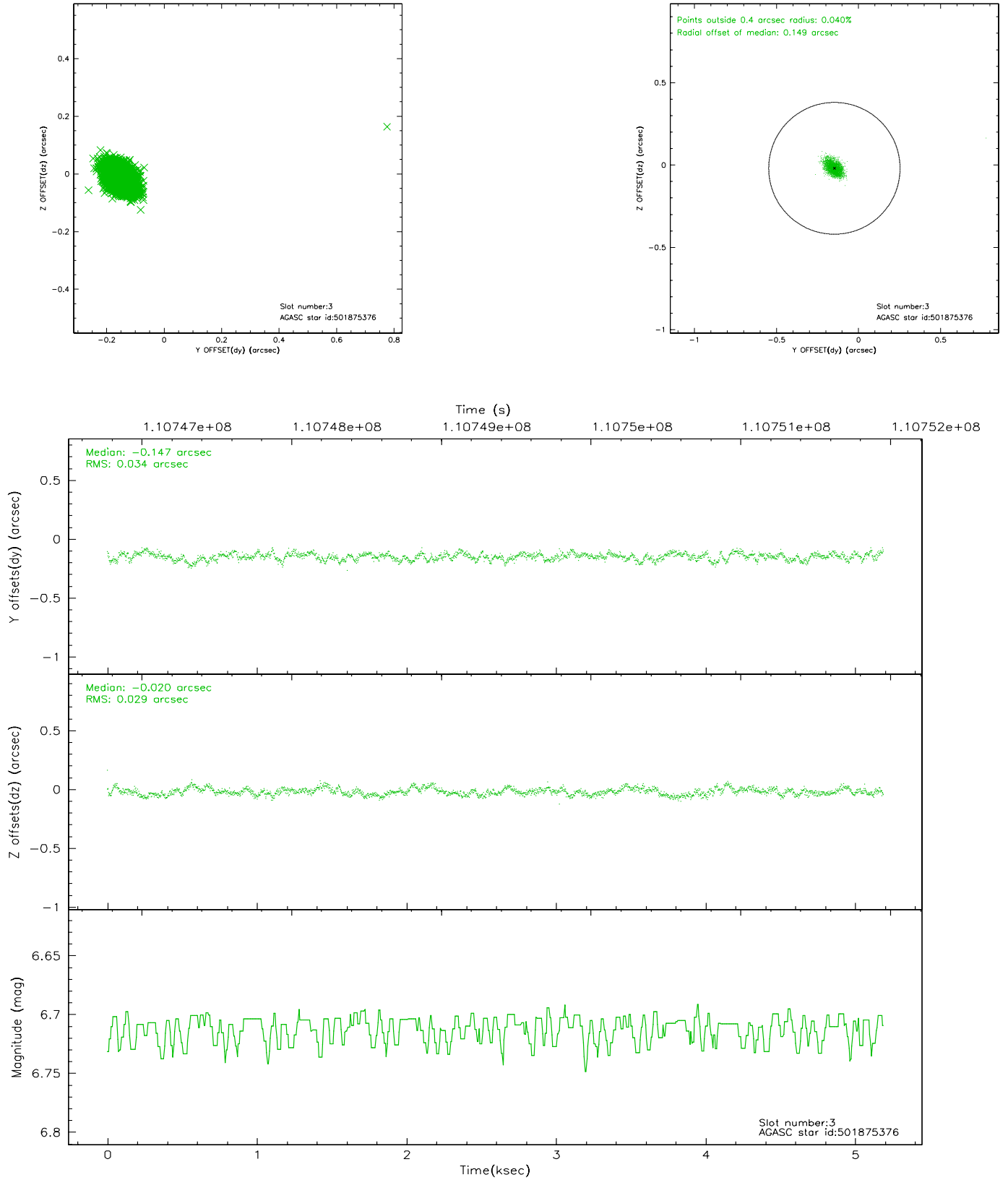
### Slot Statistics

slot	status	id	mag	n_pts	med_dy	med_dz	dr1	dr2	ra	dec	mean_y	mean_z
0	FID	ACIS-I-2	7.15	1265	-0.022	-0.048	0.008	0.014	0.000000	0.000000	-755.61	-836.72
1	FID	ACIS-I-4	7.18	1265	-0.095	0.035	0.005	0.009	0.000000	0.000000	2157.83	1068.99
2	FID	ACIS-I-5	7.23	1265	0.016	0.082	0.008	0.013	0.000000	0.000000	-1807.91	1068.17
3	GUIDE	501875376	6.71	2530	-0.147	-0.020	0.043	0.072	164.111621	57.502963	-1630.98	1363.91
4	GUIDE	501486512	9.60	2522	0.034	0.026	0.086	0.140	163.579075	56.729186	833.34	-299.27
5	OMITTED		0.00	0	0.000	0.000	0.000	0.000	0.000000	0.000000	0.00	0.00
6	GUIDE	501488296	9.77	2527	0.026	0.050	0.109	0.177	164.354320	57.421227	-1236.70	1754.11
7	GUIDE	501485952	9.85	2529	0.091	-0.054	0.101	0.165	164.221789	56.630763	1474.48	854.29

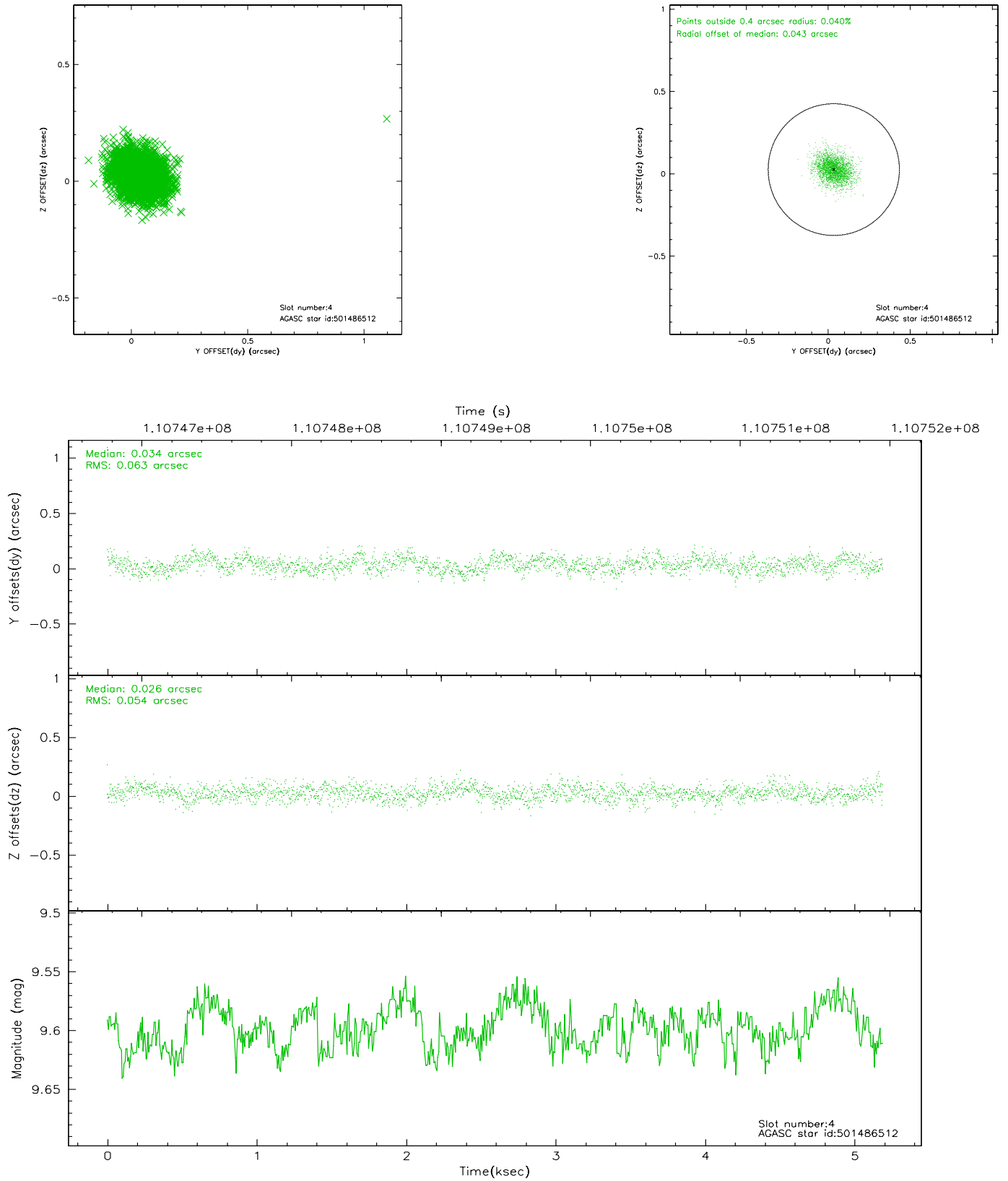


## 2.4 Star Slots

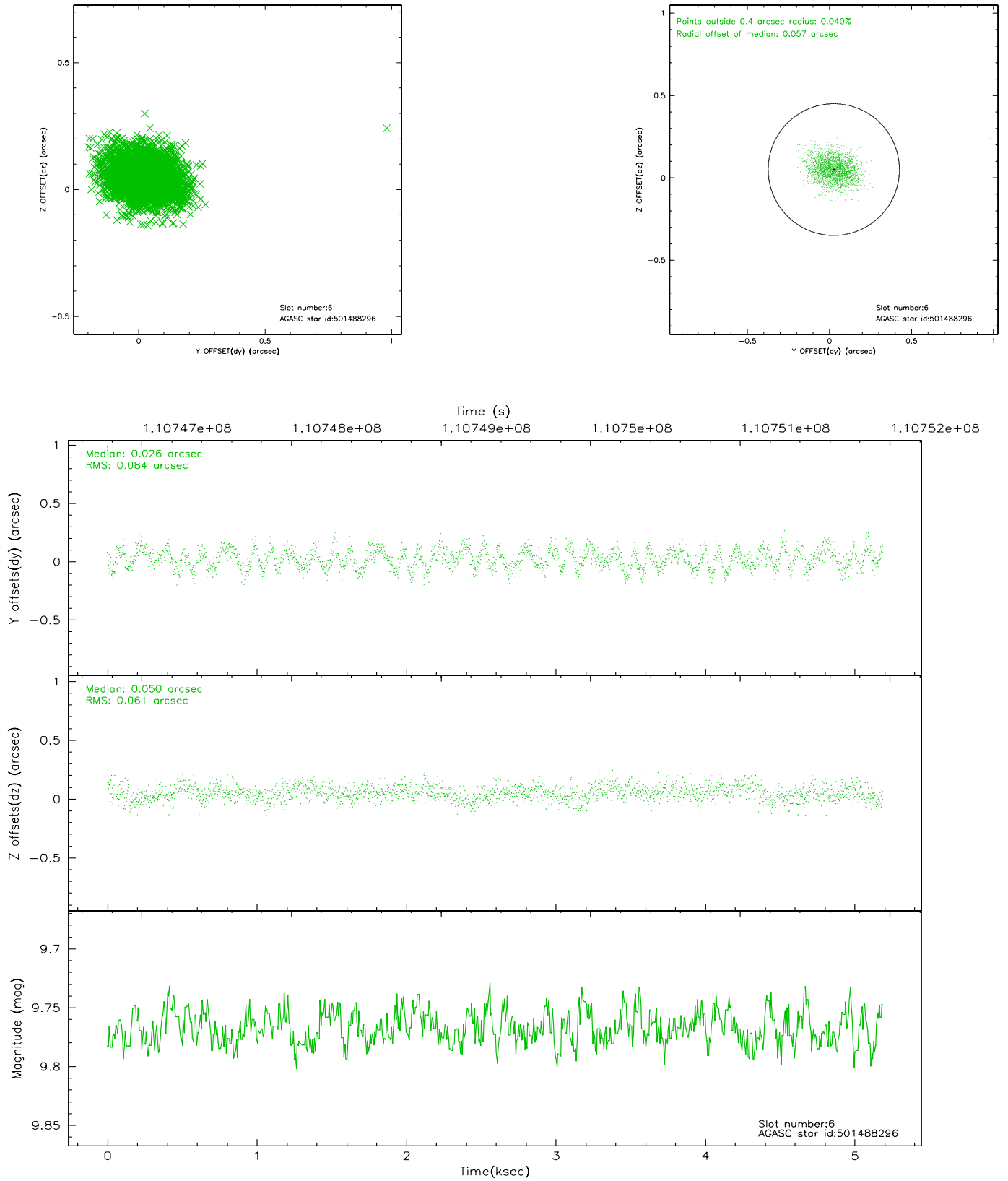
### 2.4.1 Slot 3



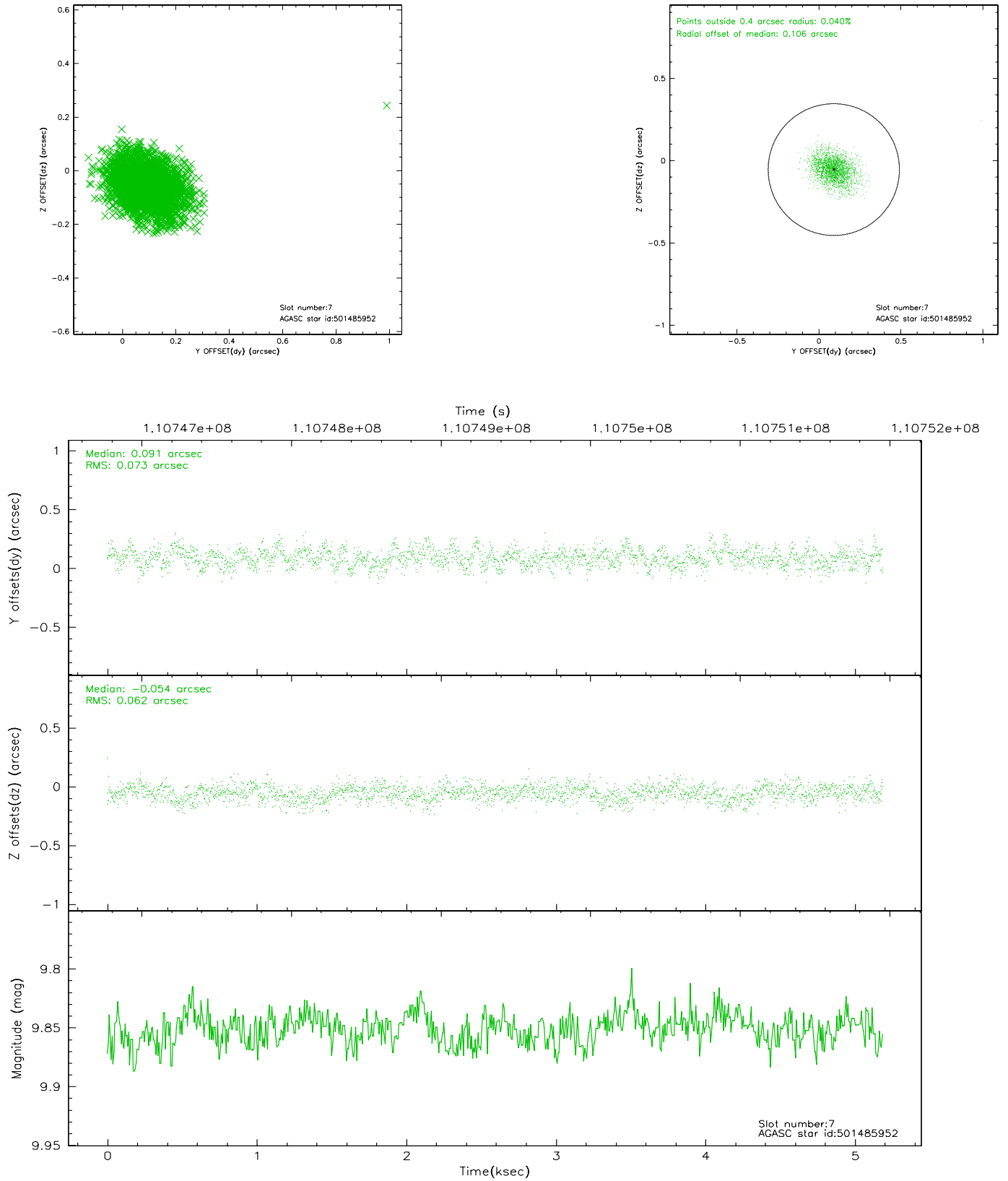
## 2.4.2 Slot 4



### 2.4.3 Slot 6

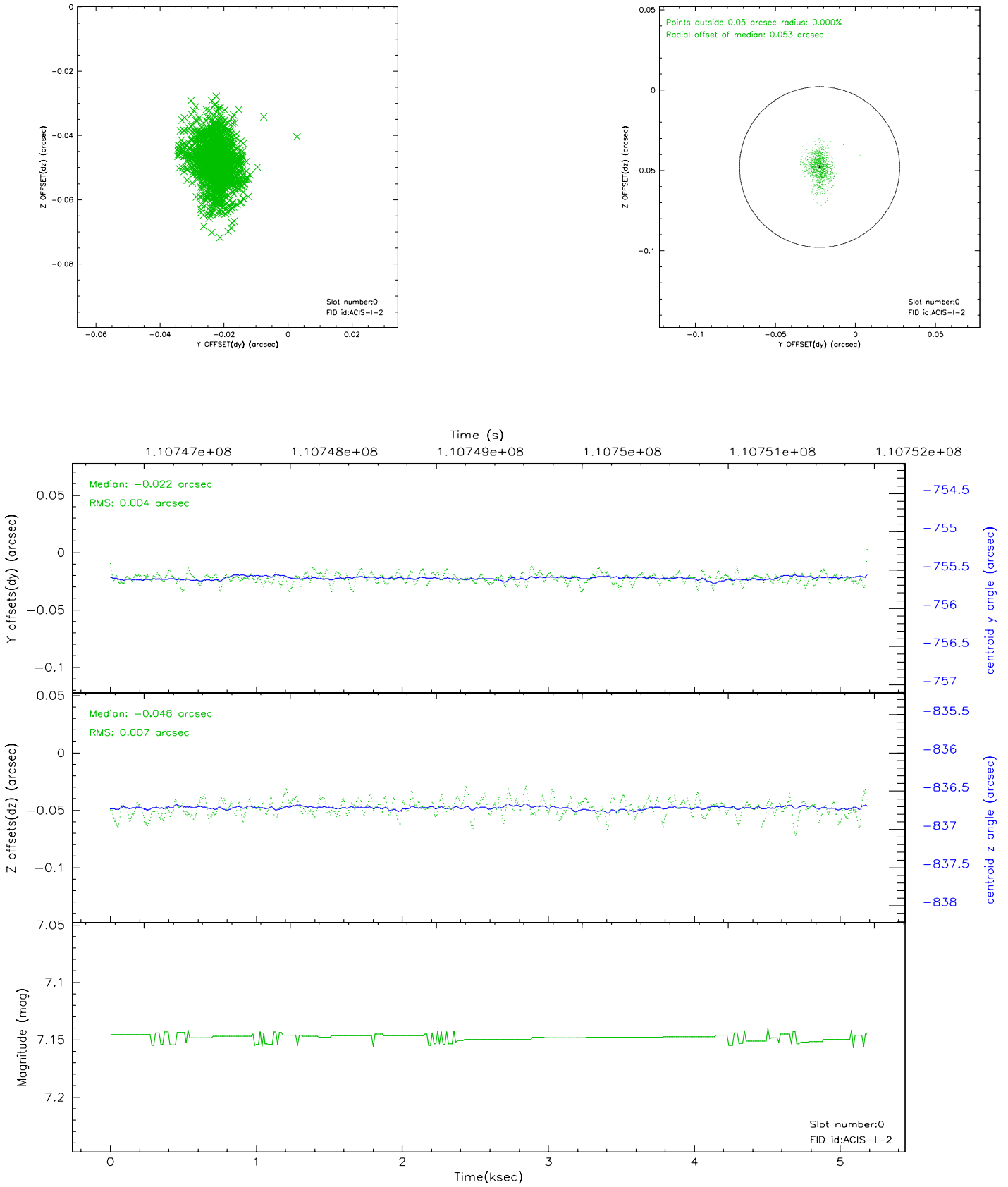


## 2.4.4 Slot 7

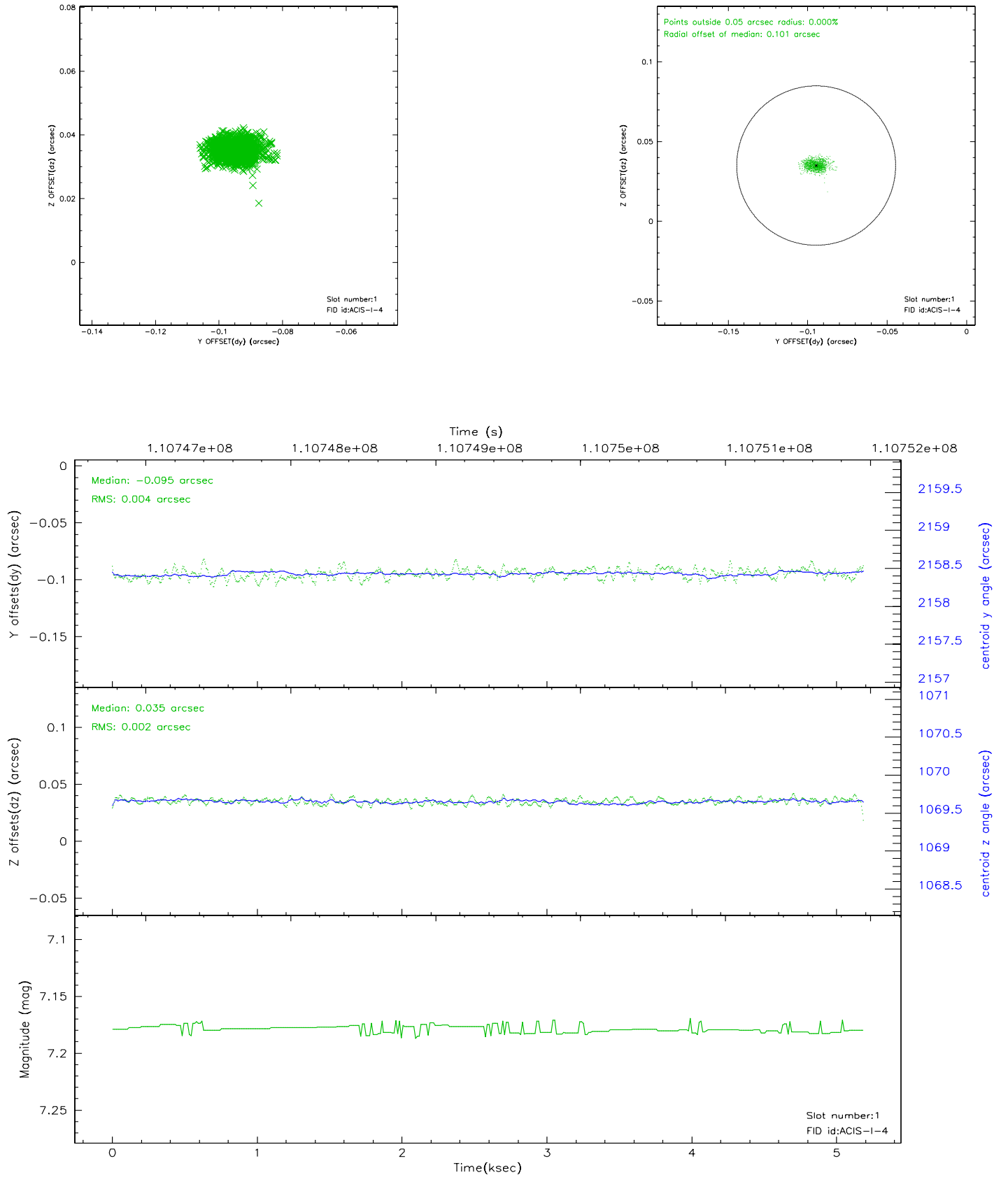


## 2.5 FID Slots

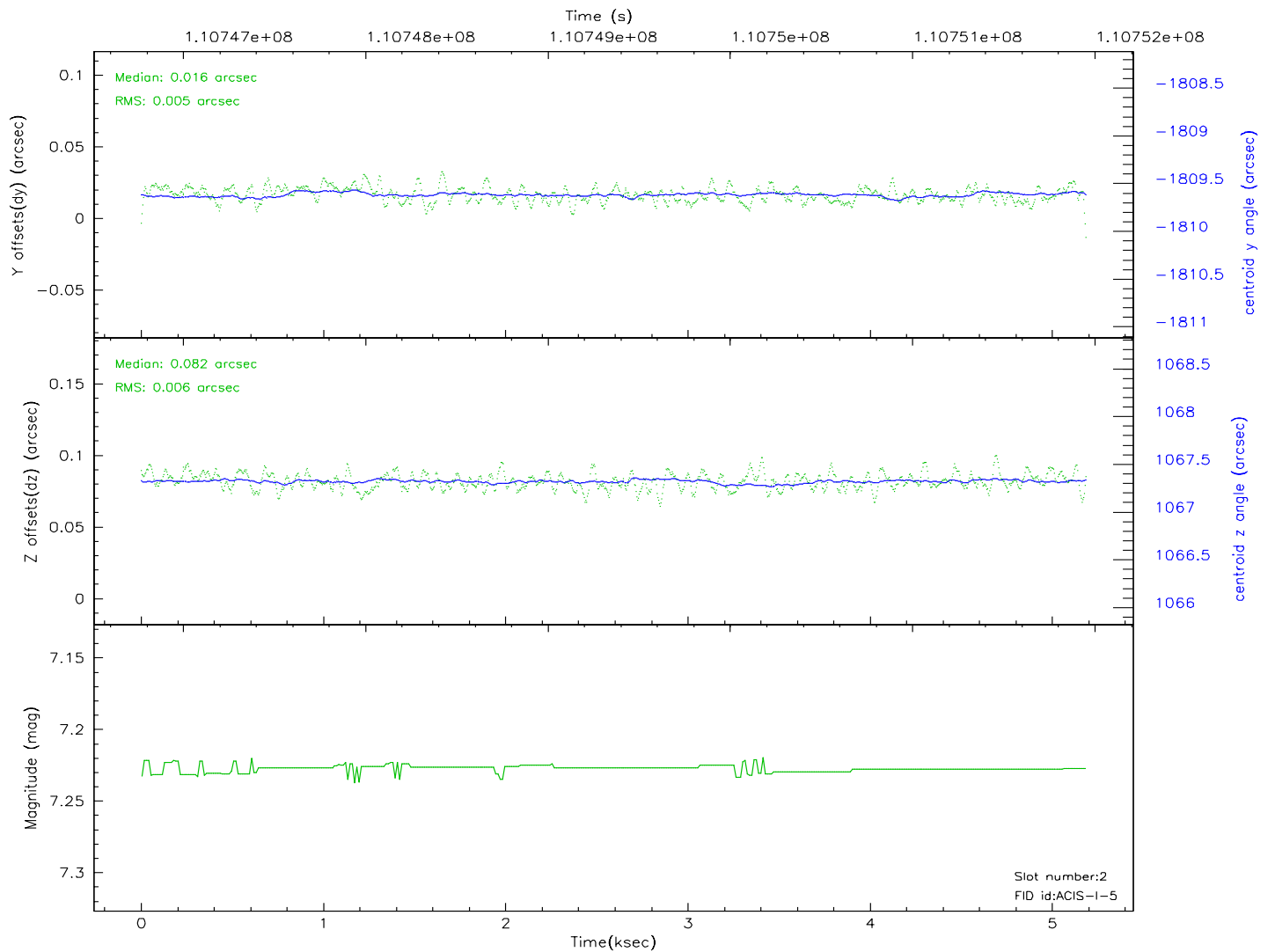
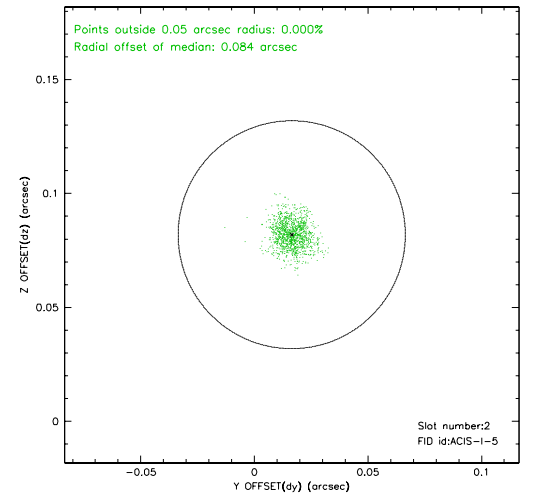
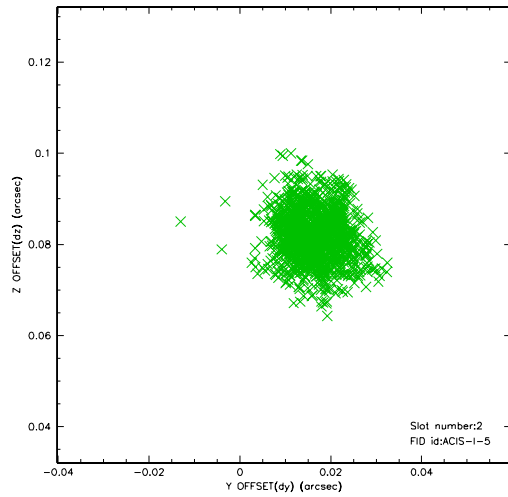
### 2.5.1 Slot 0



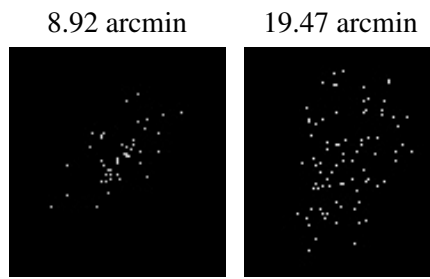
## 2.5.2 Slot 1



### 2.5.3 Slot 2



### 3 Point Sources





# A Summary

## A.1 Status

V&V Scientist	Jen Lauer
V&V Date (YYYY-MM-DD)	2010.10.01
V&V Edition	2
V&V Disposition and Status	OK
V&V Charge Time	4.7

## A.2 Comments

The guide star in slot 5 was manually excluded from the processing due to poor data quality.