

# V&V Reference Report

## L2 ASCDS Version : 7.6.9

Observation 1684 - L2 Version 002  
Chandra X-Ray Center

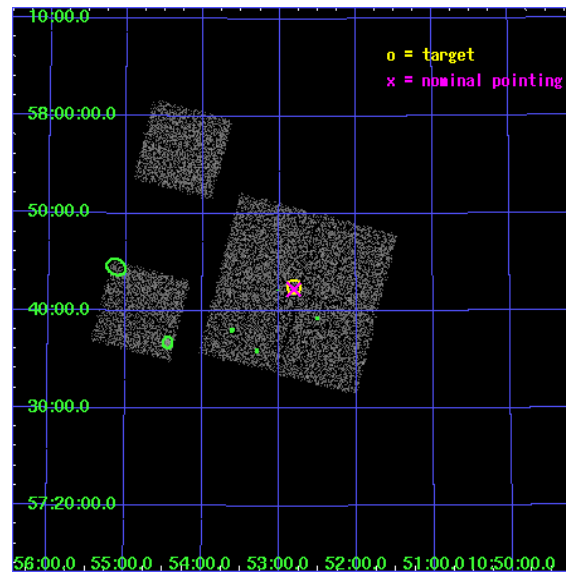
L2 Processing Date : Dec 11 2006

## Contents

<b>1</b>	<b>Front</b>	<b>2</b>
<b>2</b>	<b>OBI</b>	<b>3</b>
2.1	OBI . . . . .	3
2.1.1	Images . . . . .	3
2.1.2	Bias . . . . .	3
2.1.3	Parameters . . . . .	4
2.1.4	Events . . . . .	4
2.2	Compared Parameters . . . . .	5
2.3	Aspect . . . . .	6
2.4	Star Slots . . . . .	9
2.4.1	Slot 3 . . . . .	9
2.4.2	Slot 4 . . . . .	10
2.4.3	Slot 5 . . . . .	11
2.4.4	Slot 6 . . . . .	12
2.4.5	Slot 7 . . . . .	13
2.5	FID Slots . . . . .	14
2.5.1	Slot 0 . . . . .	14
2.5.2	Slot 1 . . . . .	15
2.5.3	Slot 2 . . . . .	16
<b>3</b>	<b>Point Sources</b>	<b>17</b>
<b>A</b>	<b>Summary</b>	<b>18</b>
A.1	Status . . . . .	18
A.2	Comments . . . . .	18

# 1 Front

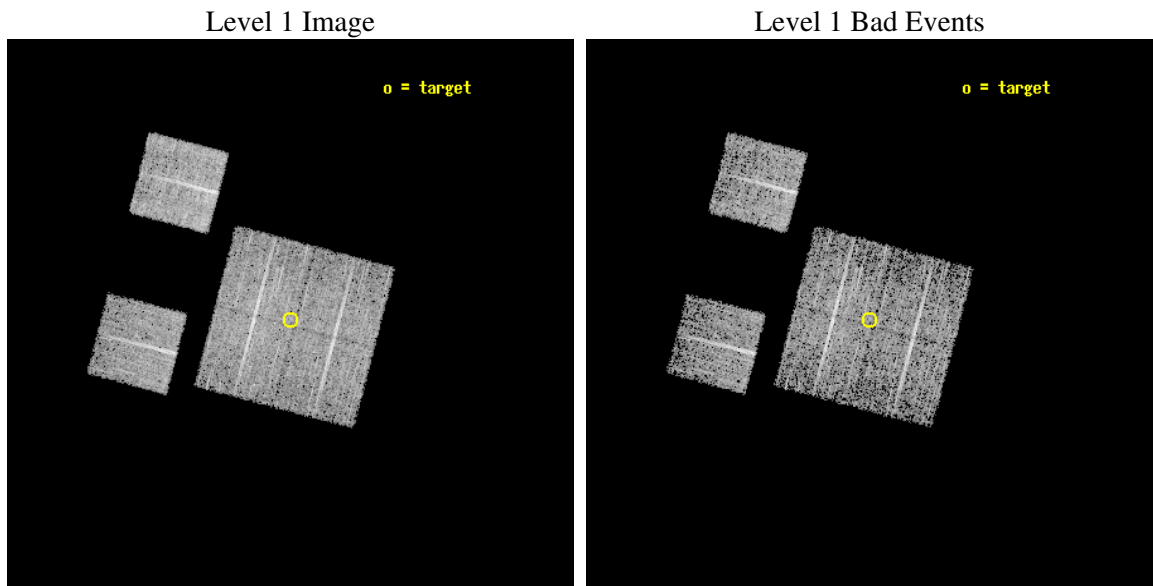
seq_num	900043
obs_id	1684
title	LOCKMAN HOLE SHALLOW SURVEY
observer	Dr. Stephen Murray
object	LOCKMAN HOLE #16
dtcycle	0
cycle	P
ra_targ	163.204167
dec_targ	57.708889
ra_nom	163.20283189806
dec_nom	57.704191338648
roll_nom	284.71167526788
revision	3
ontime	4758.4000044316
livetime	4698.146278411
ontime0	4758.4000044316
ontime1	4758.4000044316
ontime2	4758.4000044316
ontime3	4758.4000044316
ontime6	4758.4000044316
ontime8	4758.4000044316
l2events	18357



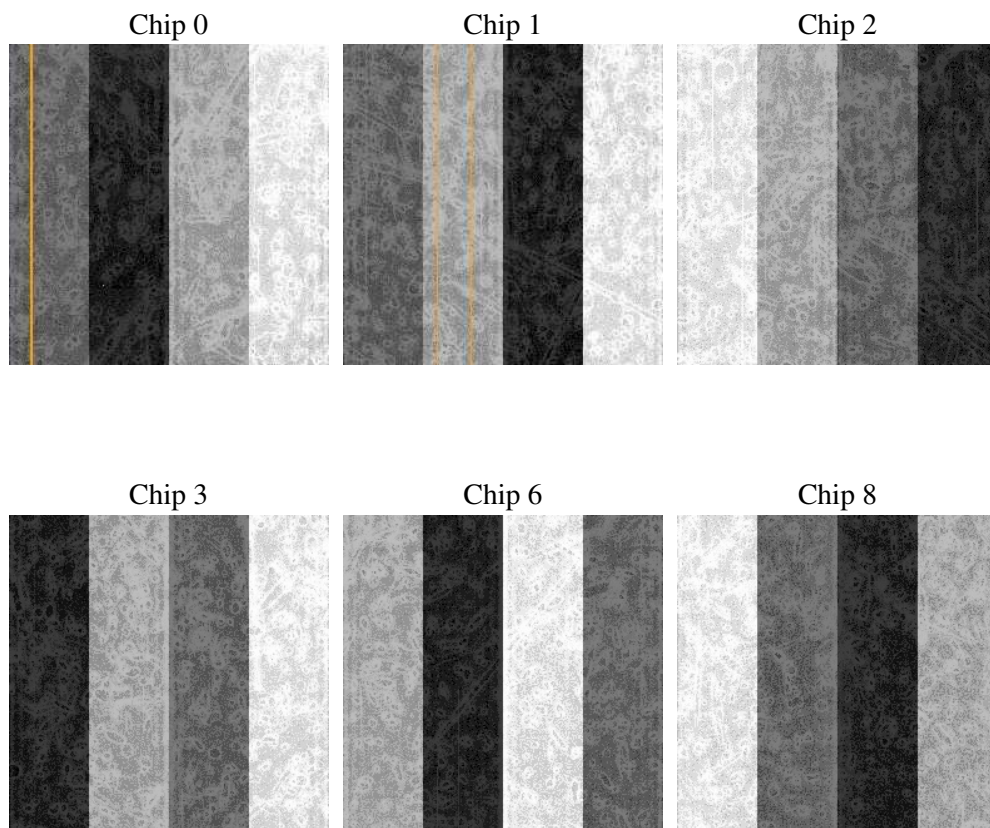
## 2 OBI

### 2.1 OBI

#### 2.1.1 Images



#### 2.1.2 Bias



### 2.1.3 Parameters

obi_num	0
ascdsver	7.6.9
caldsver	3.2.4
date	2006-12-11T17:48:00
revision	3

sched_exp_time	5000.000000
ontime	4764.265576154
ontime0	4764.265576154
ontime1	4764.2656060755
ontime2	4764.2656060755
ontime3	4764.265576154
ontime6	4764.265576154
ontime8	4764.2656060755
l1events	189606

### 2.1.4 Events

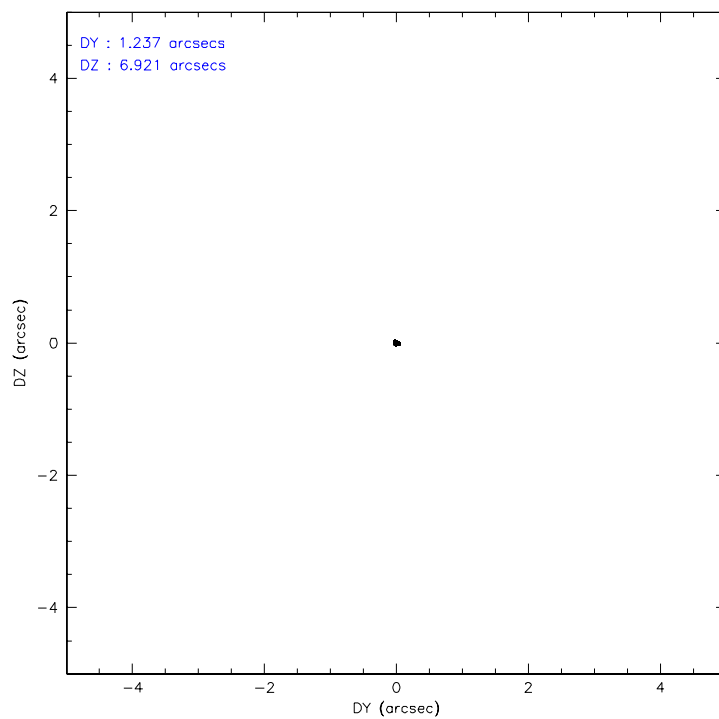
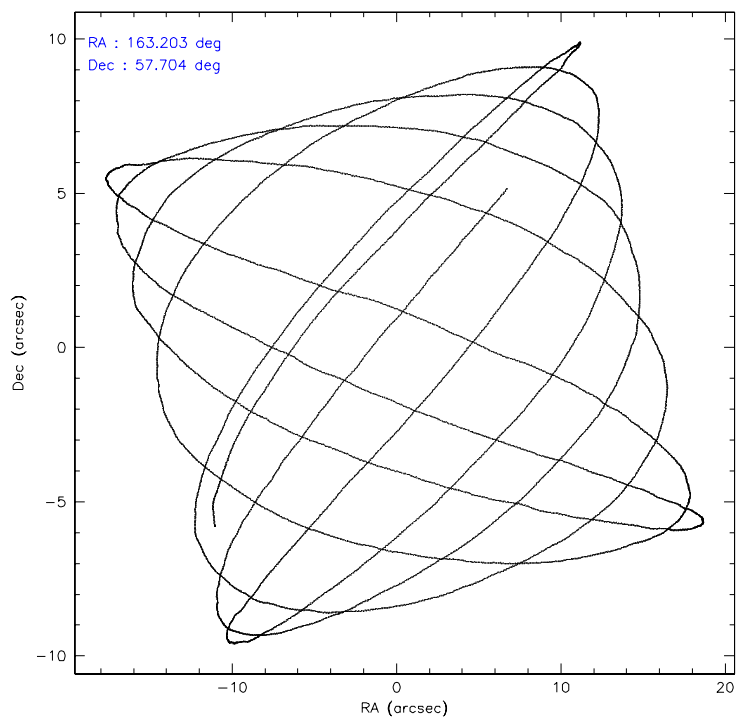
	ccd 0	ccd 1	ccd 2	ccd 3	ccd 6	ccd 8
level 1 events	28214	28786	30620	31251	30325	40410
rejected events	24680	25082	26994	27876	26926	32744
rejected %	87%	87%	88%	89%	88%	81%

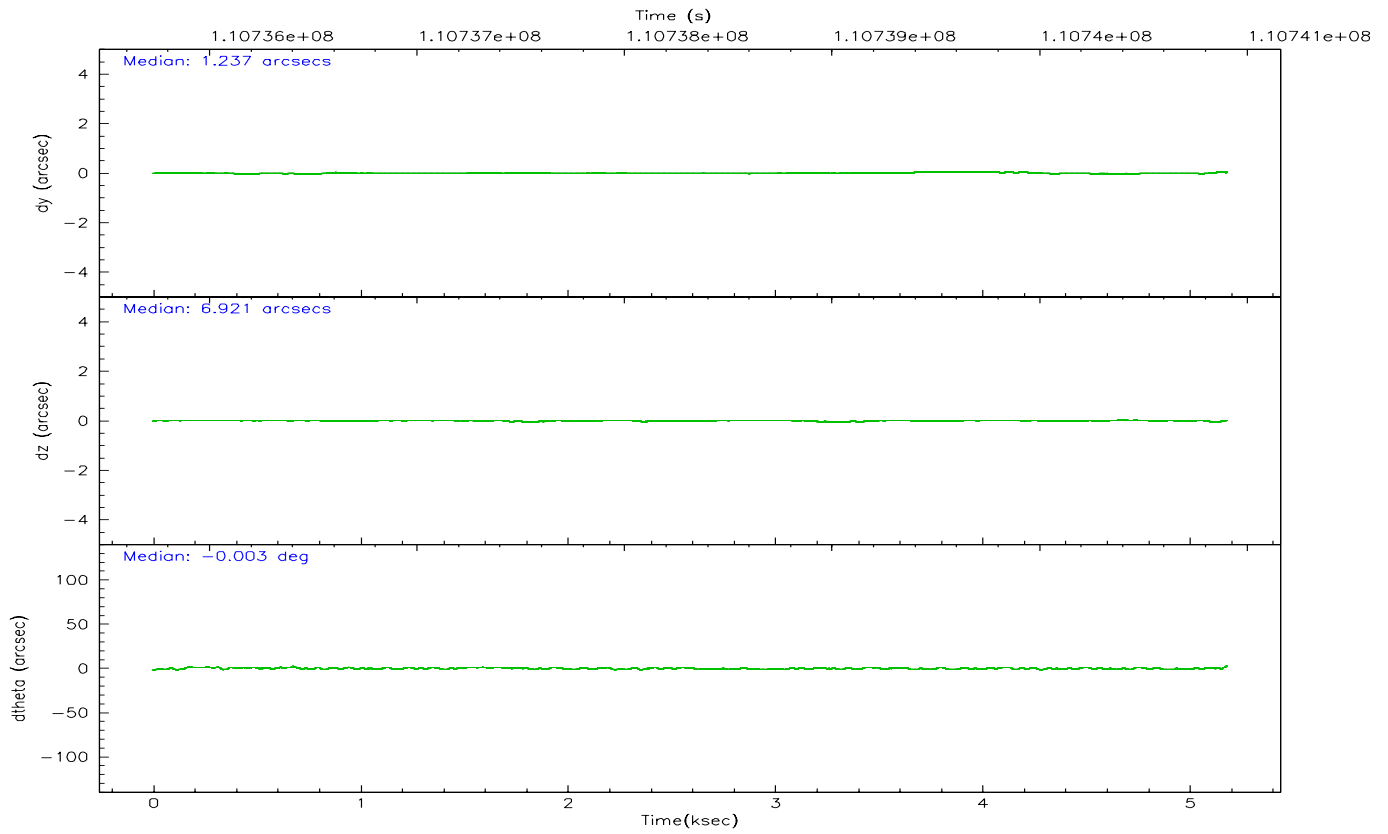
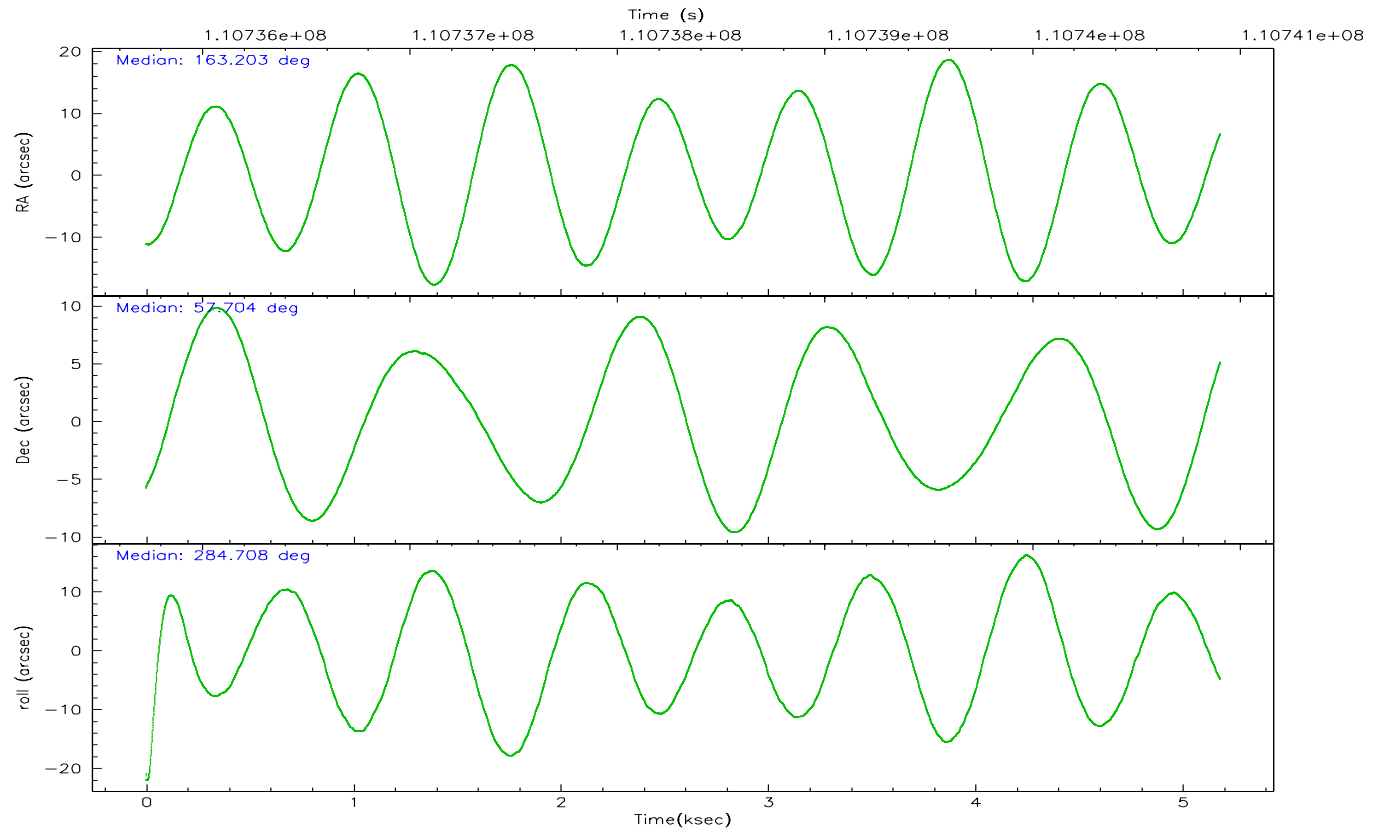
	ccd 0	ccd 1	ccd 2	ccd 3	ccd 6	ccd 8
grade 0 events	1529	1485	1657	1461	1360	2358
	5%	5%	5%	4%	4%	5%
grade 1 events	13	17	17	16	16	26
	0%	0%	0%	0%	0%	0%
grade 2 events	712	797	770	707	683	1605
	2%	2%	2%	2%	2%	3%
grade 3 events	363	363	314	315	324	819
	1%	1%	1%	1%	1%	2%
grade 4 events	332	393	309	310	332	803
	1%	1%	1%	0%	1%	1%
grade 5 events	1088	1175	1020	1150	1189	1594
	3%	4%	3%	3%	3%	3%
grade 6 events	601	673	582	585	703	2083
	2%	2%	1%	1%	2%	5%
grade 7 events	23576	23883	25951	26707	25718	31122
	83%	82%	84%	85%	84%	77%

## 2.2 Compared Parameters

Parameter	Planned	Actual	Parameter	Planned	Actual
Instrument	ACIS	ACIS	Obspar format version number	6	6
Detector	ACIS-012368	ACIS-012368	Obspar file type	PREDICTED	ACTUAL
Grating	NONE	NONE	Obspar update status	NONE	UPDATED
Data mode	FAINT	FAINT	Number of optional ACIS chips dropped	0	0
Observation mode	POINTING	POINTING	On-chip summing requested	N	N
Pointing RA	163.166695	163.2028318980602	Subarray requested	NONE	NONE
Pointing Dec	57.723682	57.7041913386477	Alternating exposures requested	N	N
Pointing Roll	284.533551	284.7116752678834	Primary exposure time	0.000000	3.2
SIM focus pos (mm)	-0.782348	-0.7809083437167272			
SIM defocus (mm)	0	0.001439871863259334			
SIM translation stage pos (mm)	-233.592463	-233.5874344608287			
SIM translation stage offset (mm)	0	-0.005018542100998502			
Observation start time	110735905.184000	110735529.37241			
Observation start date	2001-07-05T15:57:21	2001-07-05T15:52:09			
Observation end time	110740905.184000	110741039.77262			
Observation end date	2001-07-05T17:20:41	2001-07-05T17:23:59			
Read mode	TIMED	TIMED			

## 2.3 Aspect





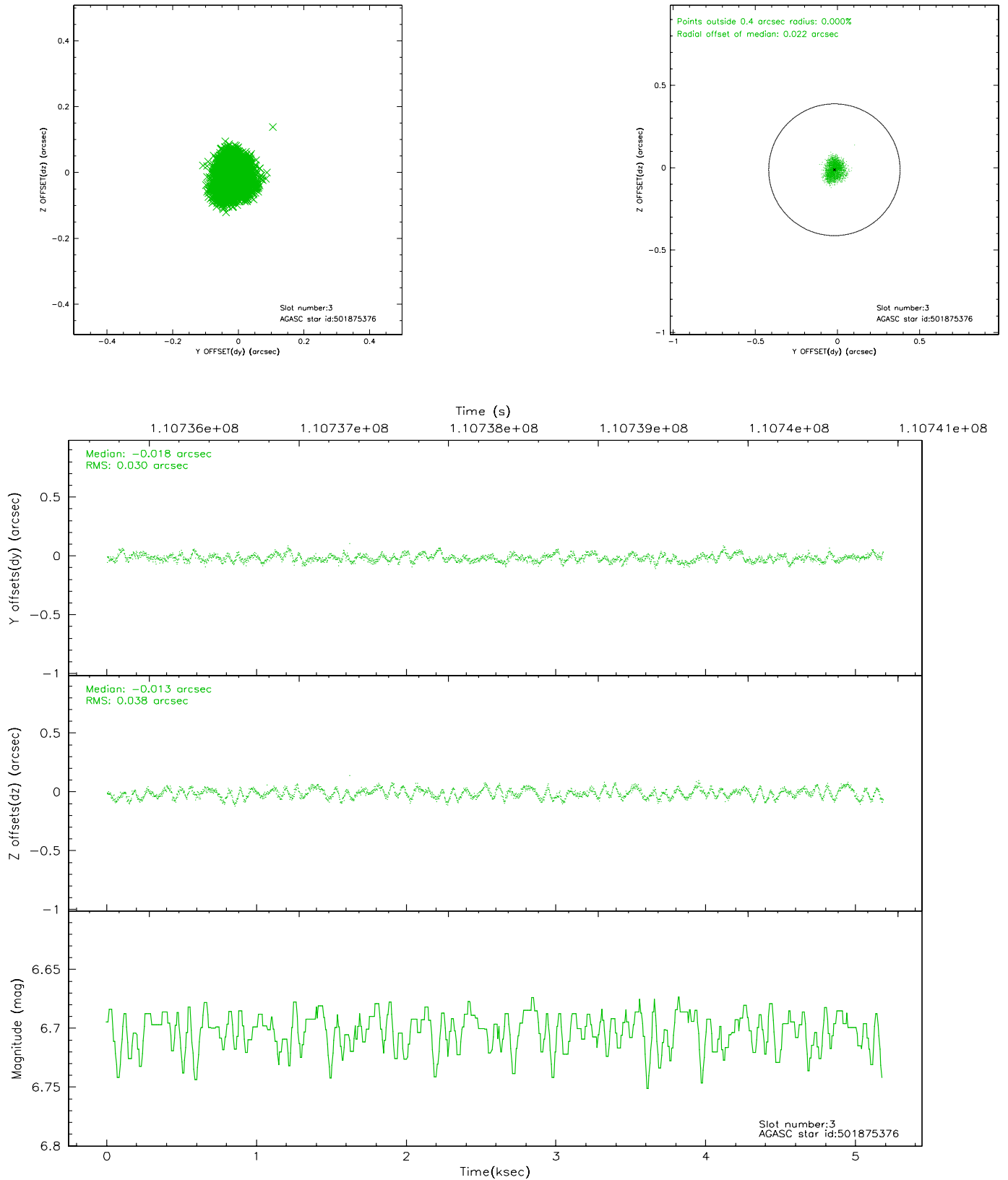
### Slot Statistics

slot	status	id	mag	n_pts	med_dy	med_dz	dr1	dr2	ra	dec	mean_y	mean_z
0	FID	ACIS-I-2	7.16	1264	-0.024	-0.047	0.009	0.016	0.000000	0.000000	-755.58	-836.73
1	FID	ACIS-I-4	7.18	1264	-0.092	0.036	0.006	0.010	0.000000	0.000000	2157.86	1068.97
2	FID	ACIS-I-5	7.23	1264	0.015	0.080	0.008	0.014	0.000000	0.000000	-1807.89	1068.15
3	GUIDE	501875376	6.70	2529	-0.018	-0.013	0.053	0.080	164.111621	57.502963	1215.36	1572.90
4	GUIDE	501488528	8.12	2528	-0.048	0.019	0.067	0.109	162.150935	57.312270	924.50	-2278.93
5	GUIDE	501876472	8.99	2529	0.061	0.054	0.075	0.124	163.621724	57.867447	-284.82	972.97
6	GUIDE	501877264	9.30	2529	-0.032	0.008	0.071	0.113	163.254394	57.702218	116.84	144.37
7	GUIDE	501875064	9.11	2527	0.033	-0.067	0.080	0.128	163.017696	58.369846	-2322.54	310.98

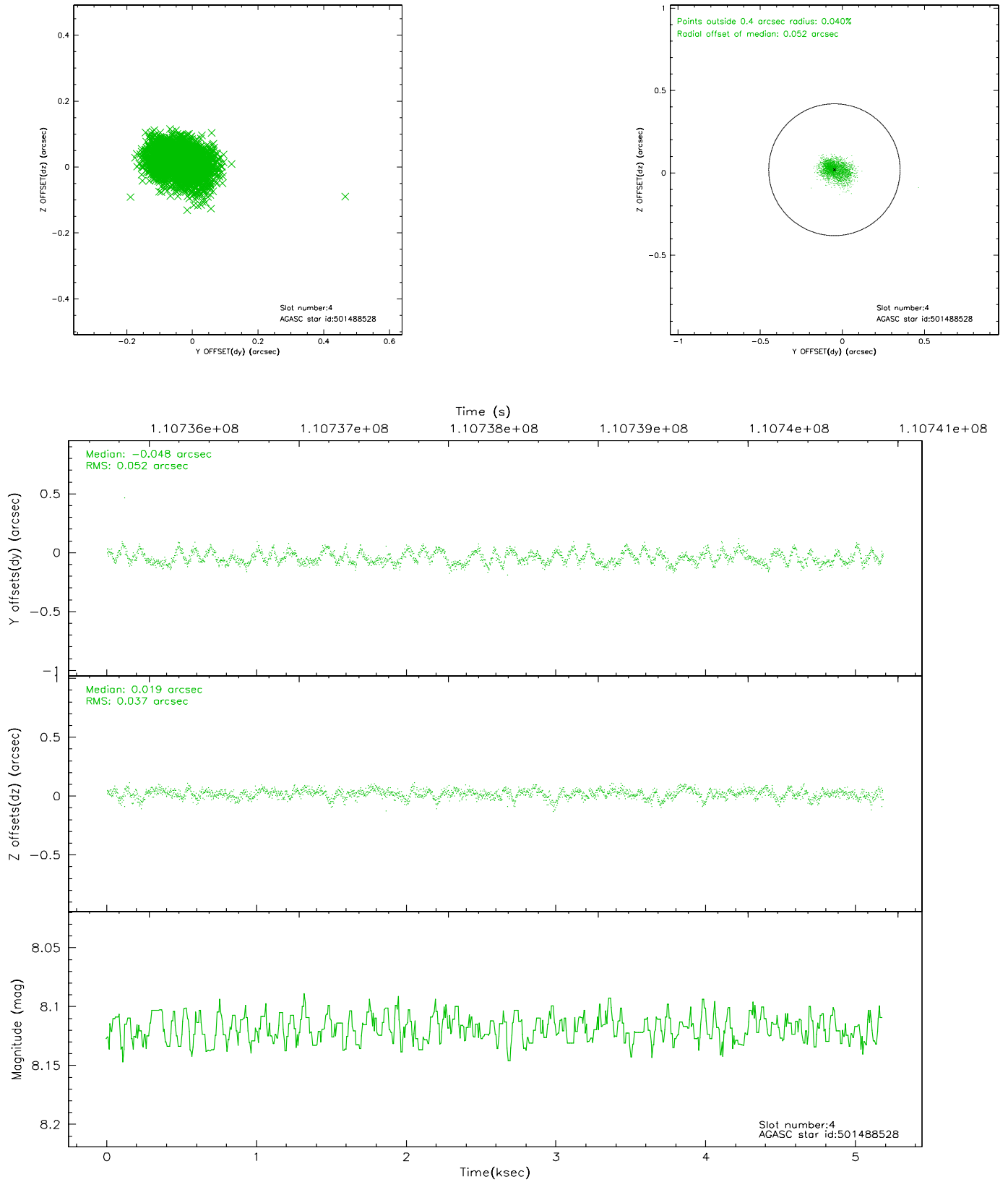


## 2.4 Star Slots

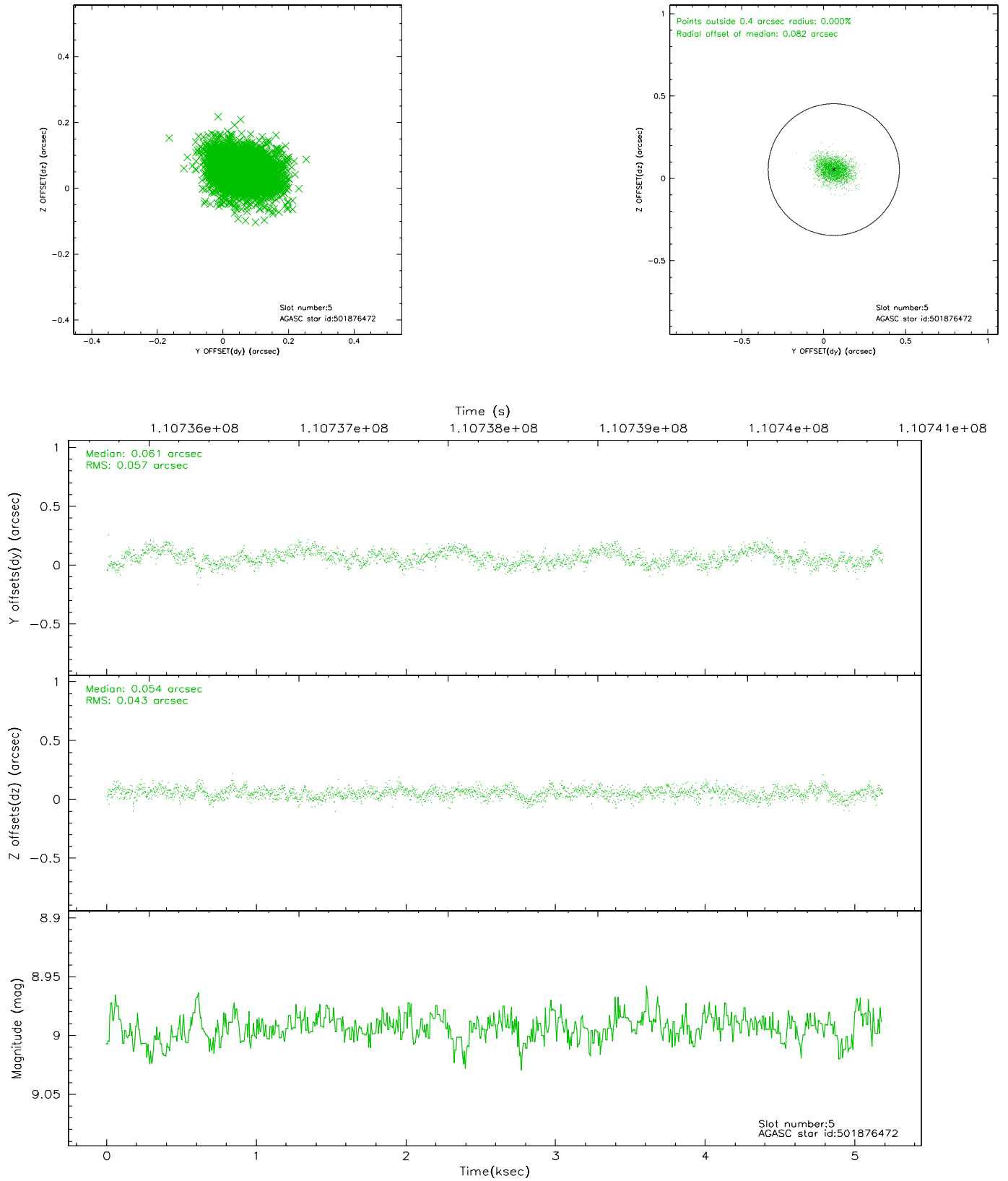
### 2.4.1 Slot 3



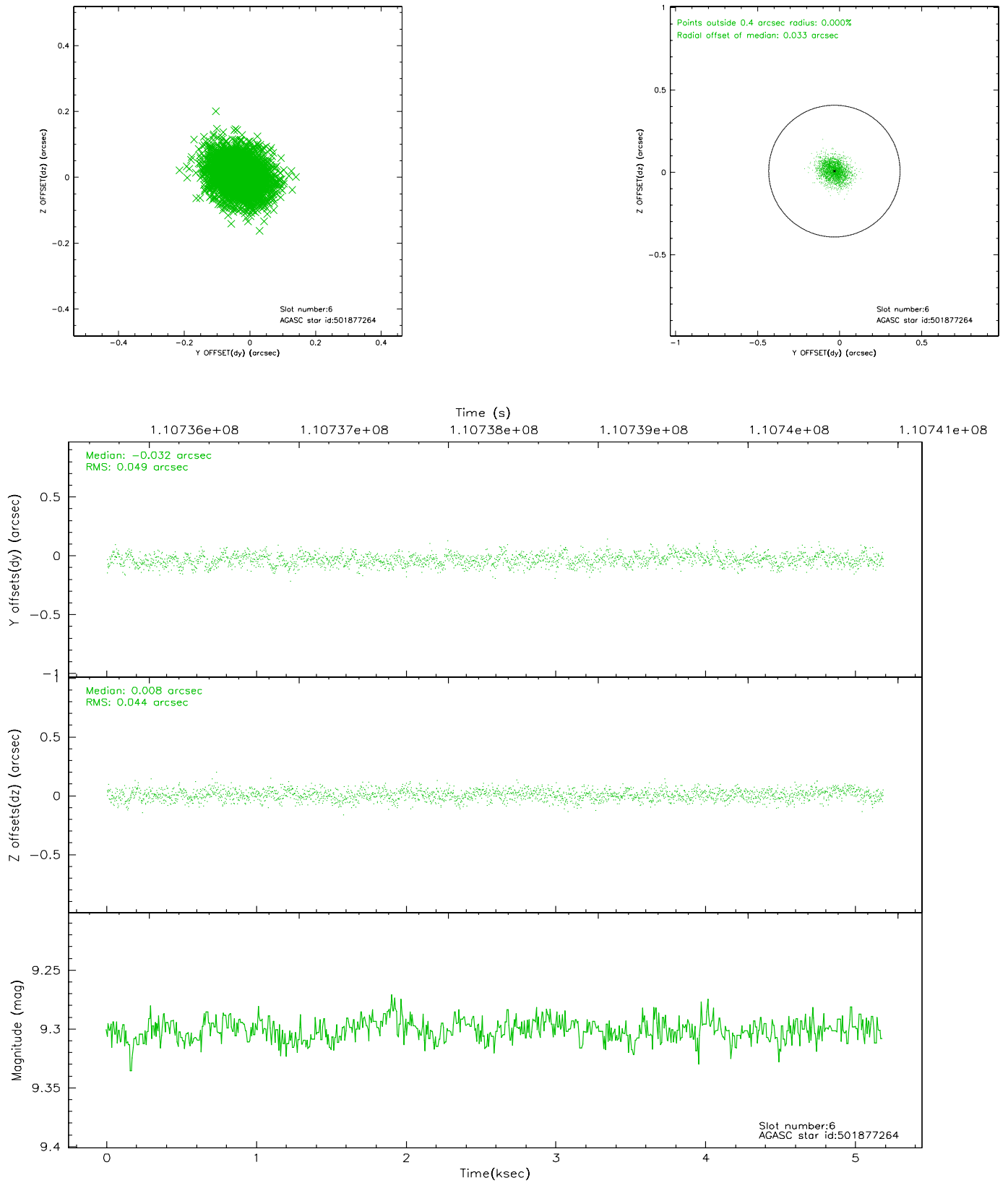
## 2.4.2 Slot 4



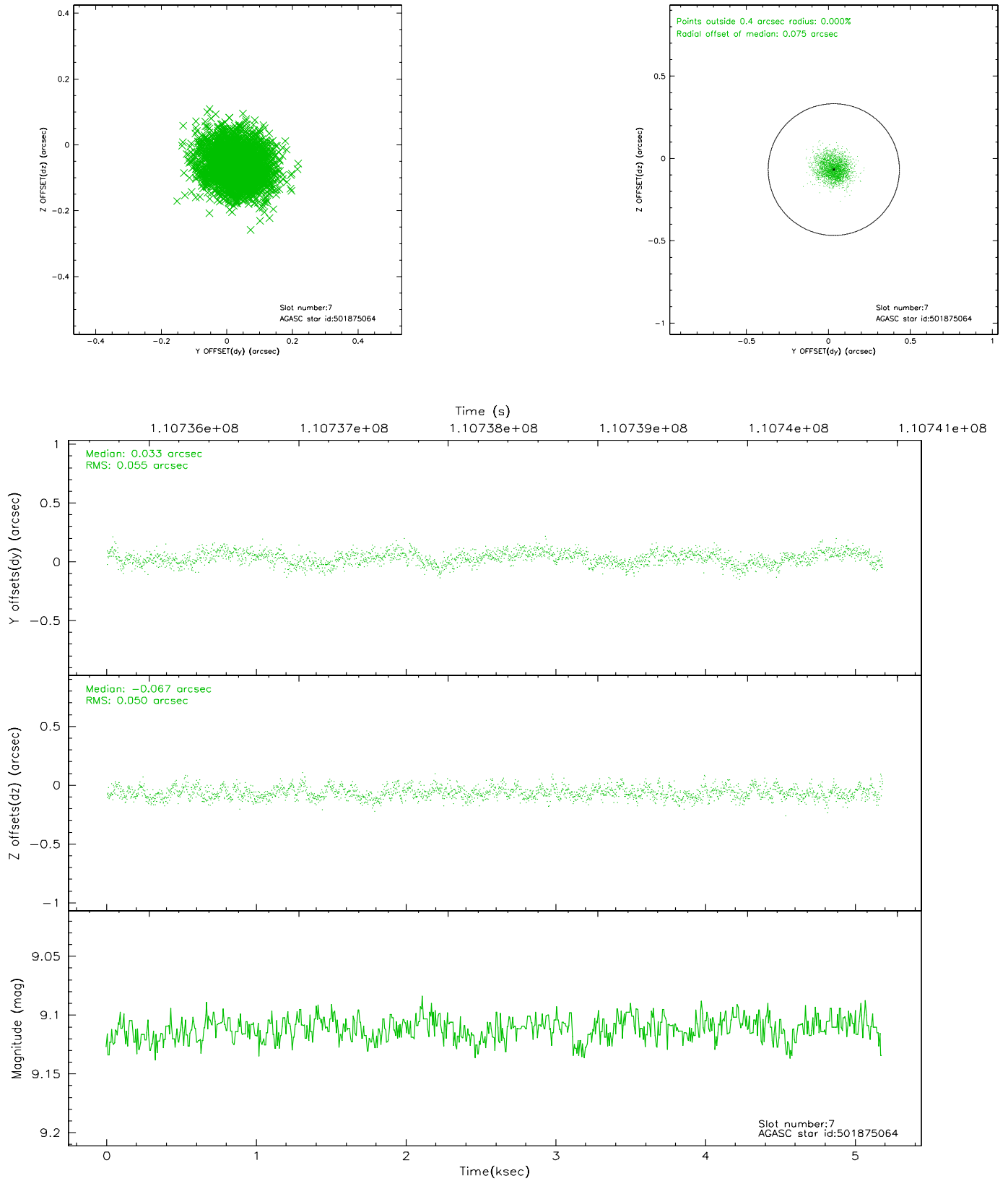
### 2.4.3 Slot 5



## 2.4.4 Slot 6

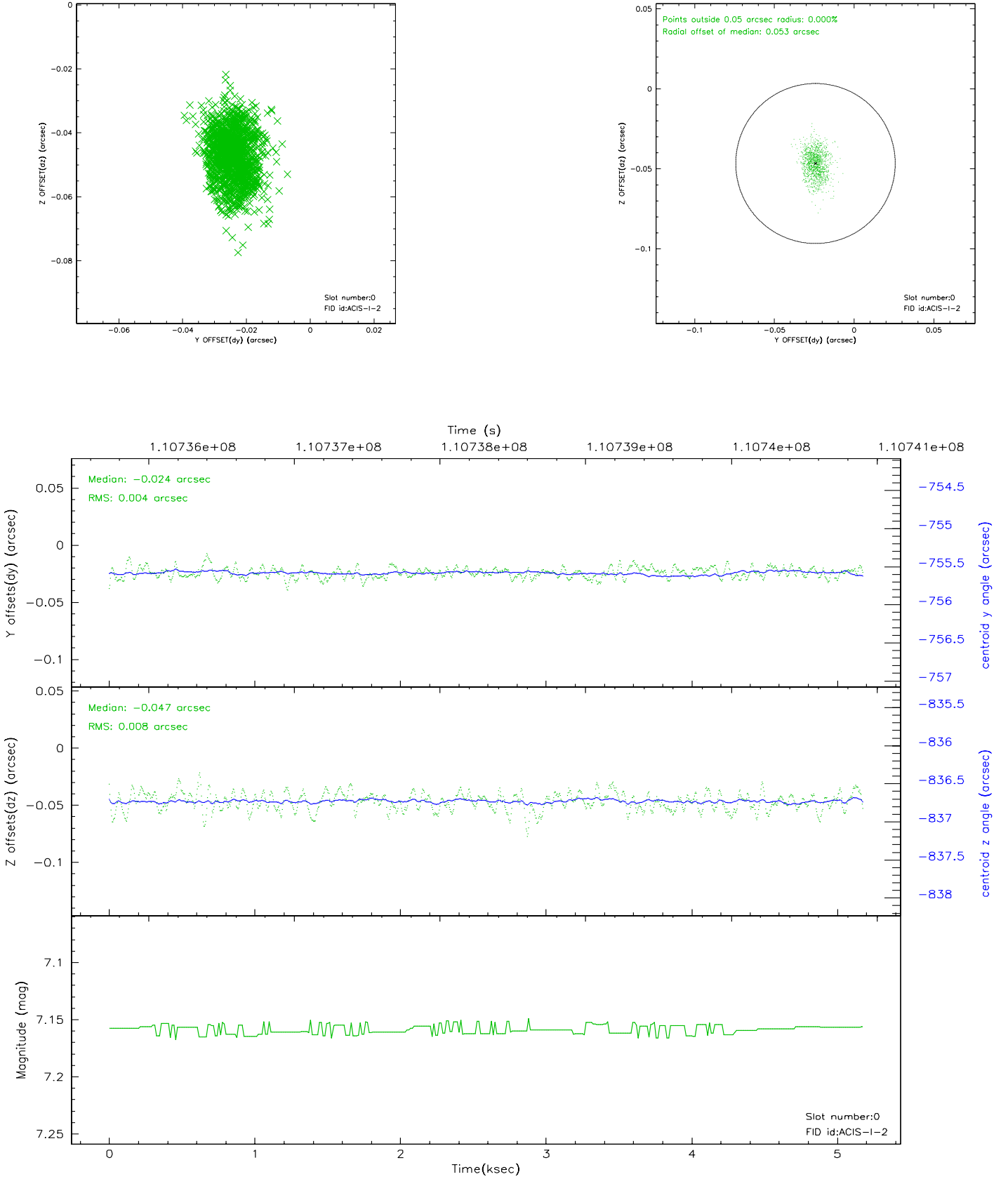


## 2.4.5 Slot 7

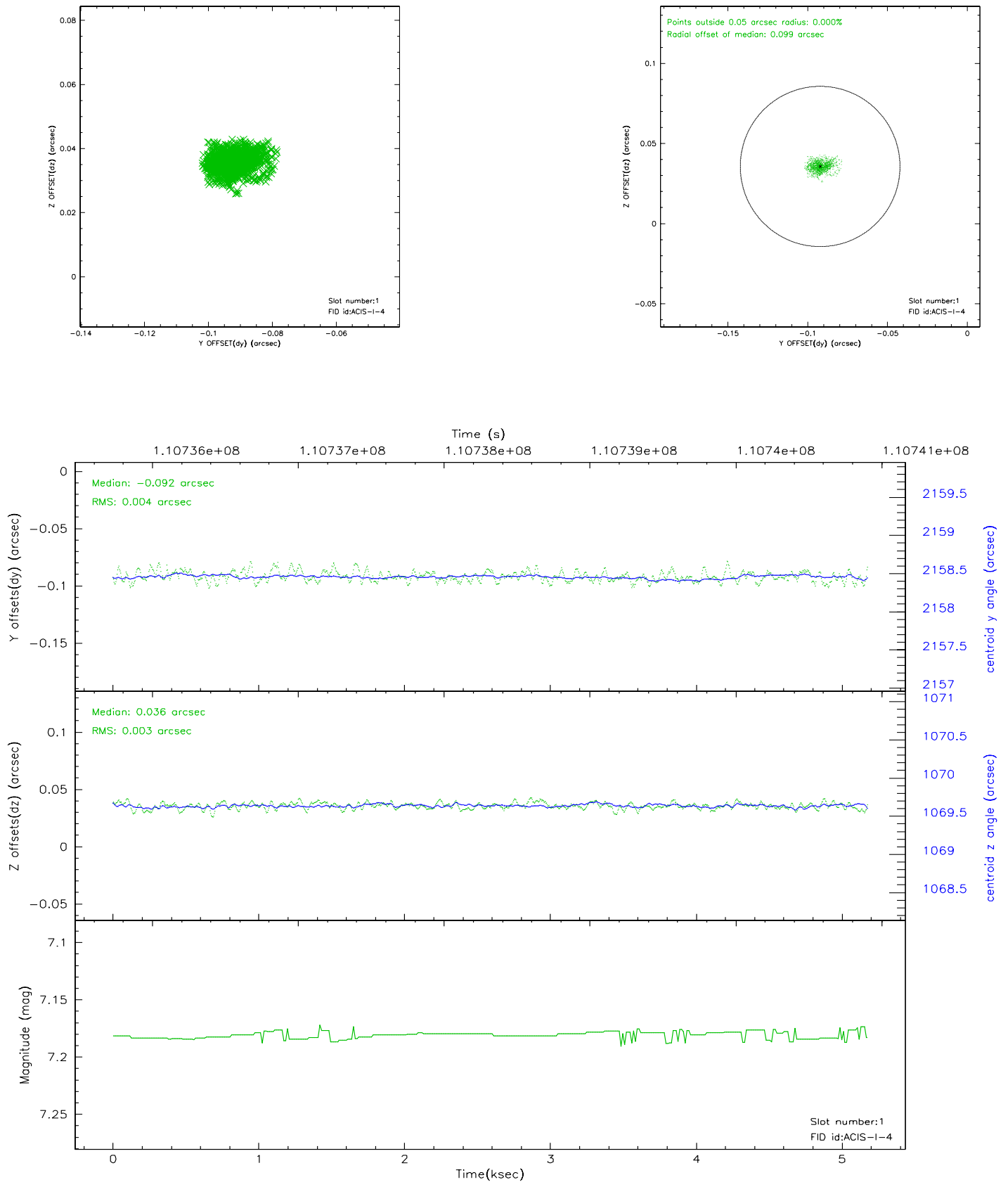


## 2.5 FID Slots

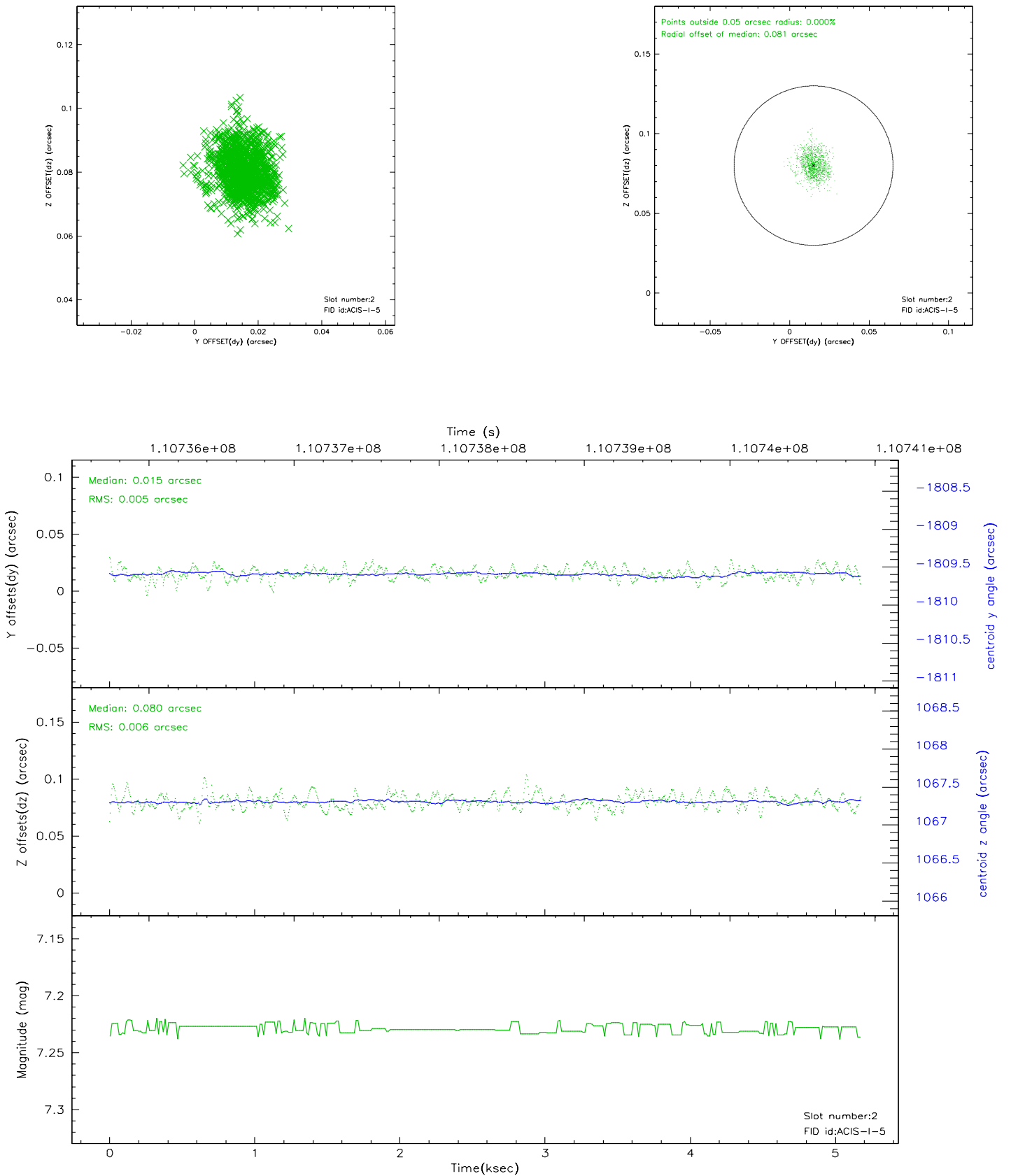
### 2.5.1 Slot 0



## 2.5.2 Slot 1

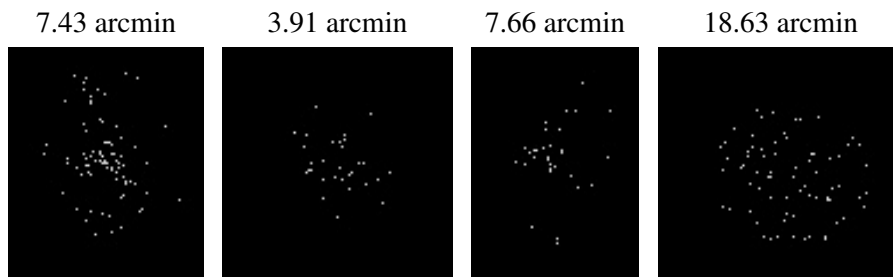


### 2.5.3 Slot 2





### 3 Point Sources



## A Summary

### A.1 Status

V&V Scientist	Jen Lauer
V&V Date (YYYY-MM-DD)	2006.12.11
V&V Edition	1
V&V Disposition and Status	OK
V&V Charge Time	4.8

### A.2 Comments