

V&V Reference Report

L2 ASCDS Version : 7.6.9

Observation 1683 - L2 Version 001
Chandra X-Ray Center

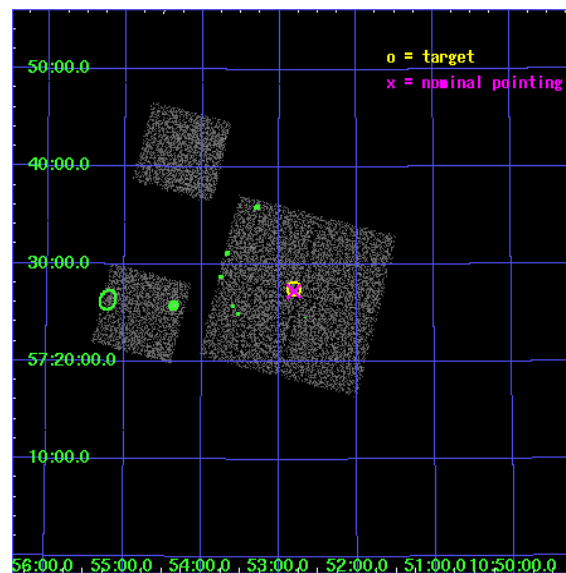
L2 Processing Date : Dec 11 2006

Contents

1	Front	2
2	OBI	3
2.1	OBI	3
2.1.1	Images	3
2.1.2	Bias	3
2.1.3	Parameters	4
2.1.4	Events	4
2.2	Compared Parameters	5
2.3	Aspect	6
2.4	Star Slots	9
2.4.1	Slot 3	9
2.4.2	Slot 4	10
2.4.3	Slot 5	11
2.4.4	Slot 6	12
2.4.5	Slot 7	13
2.5	FID Slots	14
2.5.1	Slot 0	14
2.5.2	Slot 1	15
2.5.3	Slot 2	16
3	Point Sources	17
A	Summary	18
A.1	Status	18
A.2	Comments	18

1 Front

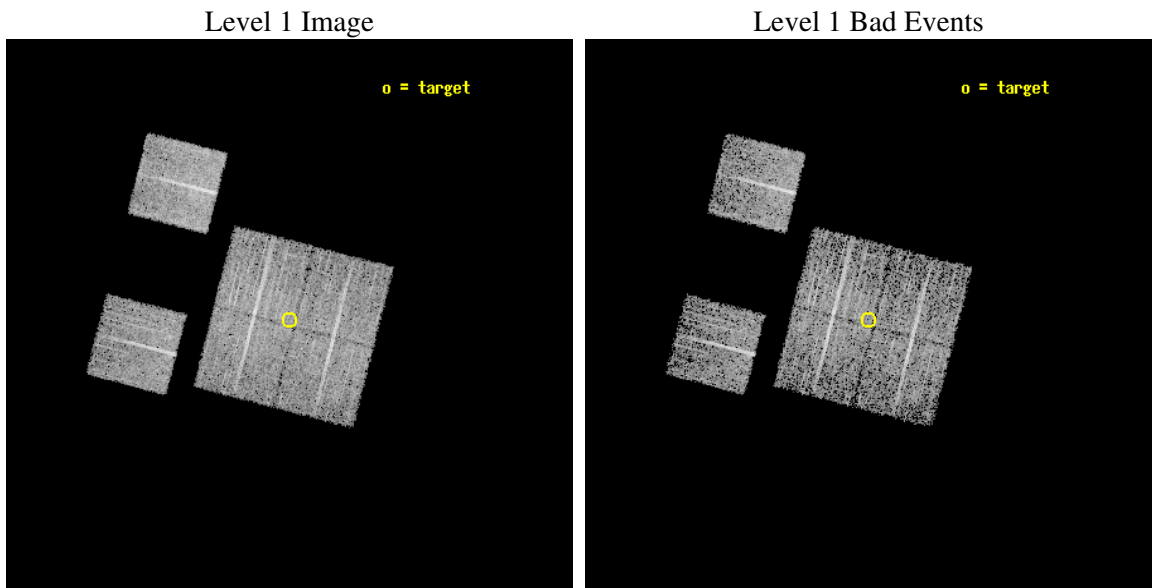
seq_num	900042
obs_id	1683
title	LOCKMAN HOLE SHALLOW SURVEY
observer	Dr. Stephen Murray
object	LOCKMAN HOLE #11
dtcycle	0
cycle	P
ra_targ	163.204167
dec_targ	57.458889
ra_nom	163.20297469336
dec_nom	57.454228327299
roll_nom	284.47027836202
revision	2
ontime	4758.4000044316
livetime	4698.146278411
ontime0	4758.4000044316
ontime1	4758.4000044316
ontime2	4758.4000044316
ontime3	4758.4000044316
ontime6	4758.4000044316
ontime8	4758.4000044316
l2events	18488



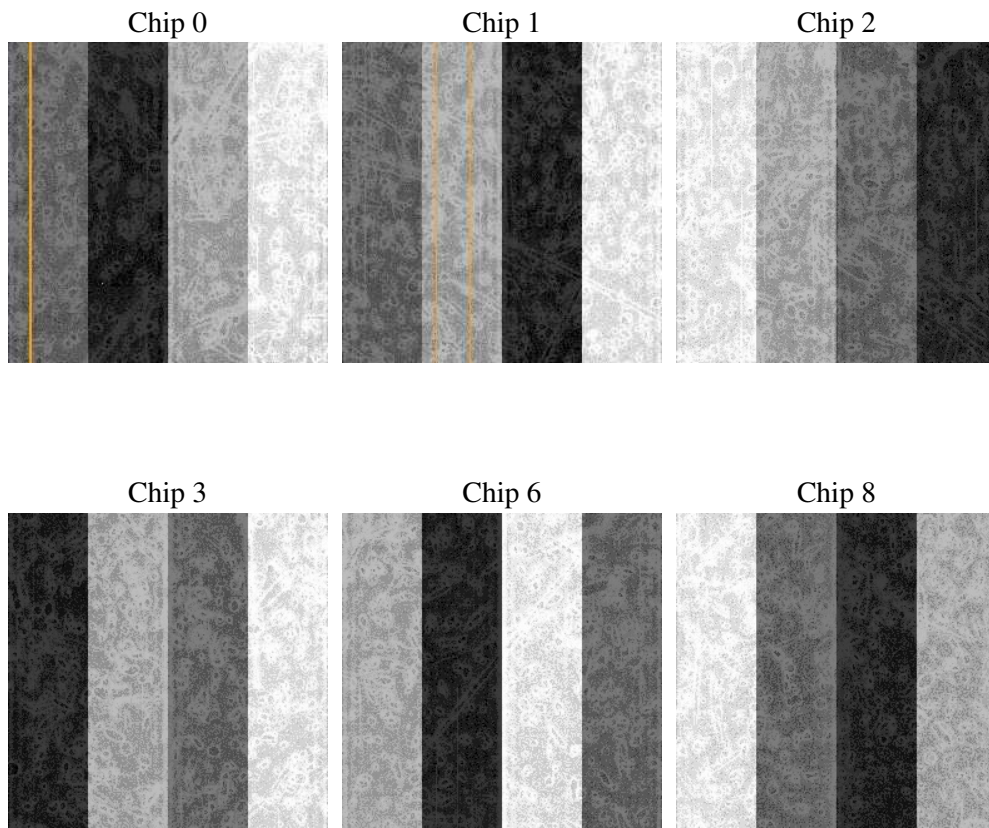
2 OBI

2.1 OBI

2.1.1 Images



2.1.2 Bias



2.1.3 Parameters

obi_num	0
ascdsver	7.6.9
caldsver	3.2.4
date	2006-12-11T17:06:14
revision	2

sched_exp_time	5000.000000
ontime	4764.2655661553
ontime0	4764.2655661553
ontime1	4764.2655661553
ontime2	4764.2655661553
ontime3	4764.2655661553
ontime6	4764.2655661553
ontime8	4764.2655661553
l1events	189357

2.1.4 Events

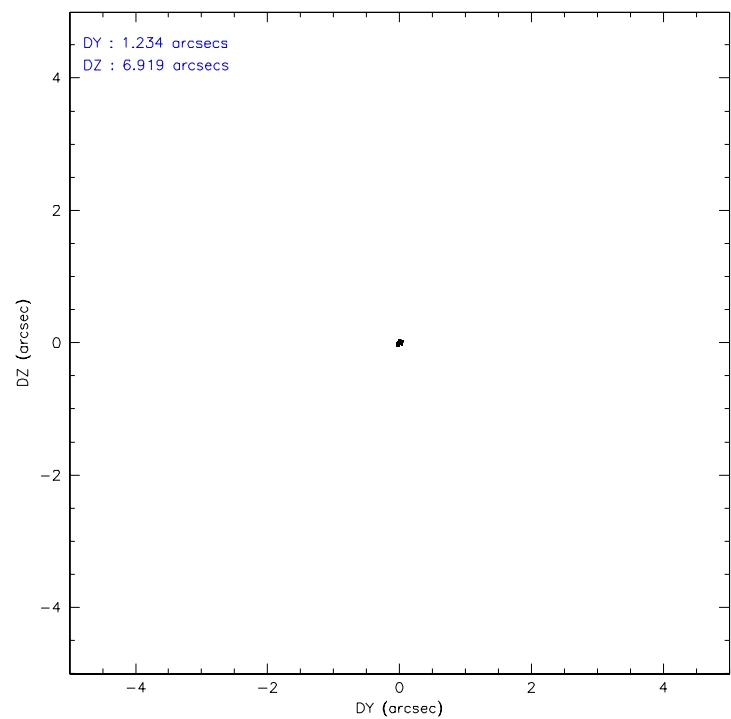
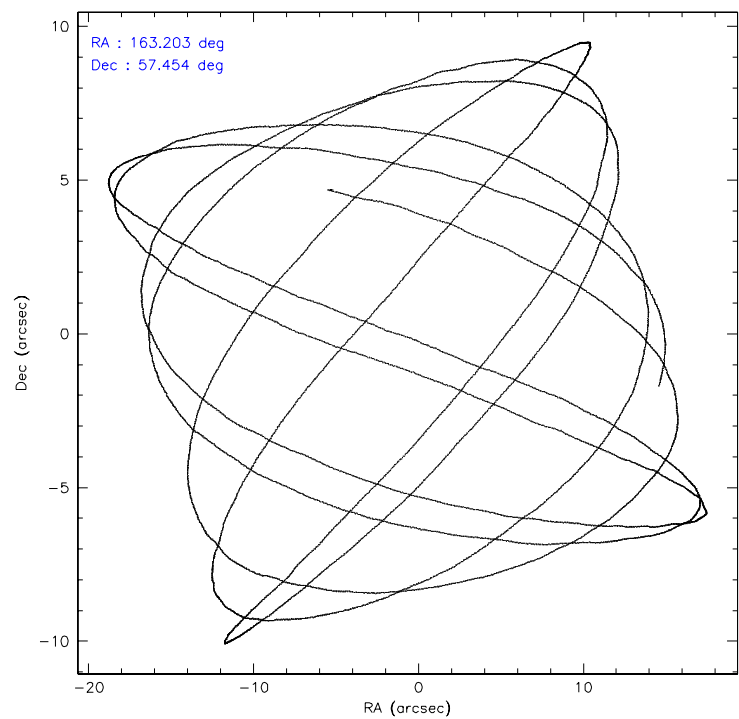
	ccd 0	ccd 1	ccd 2	ccd 3	ccd 6	ccd 8
level 1 events	28128	28426	29816	33424	29712	39851
rejected events	24570	24883	26255	29890	26174	32231
rejected %	87%	87%	88%	89%	88%	80%

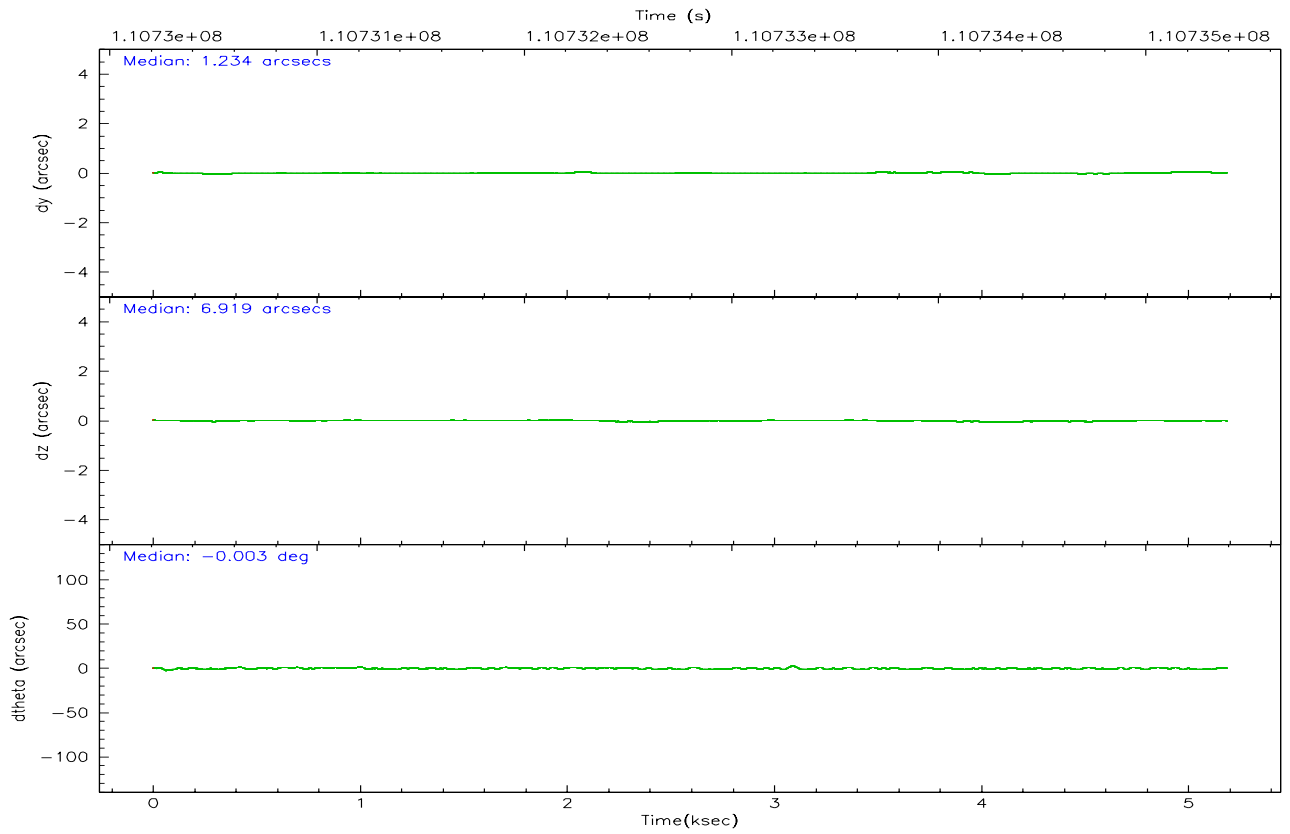
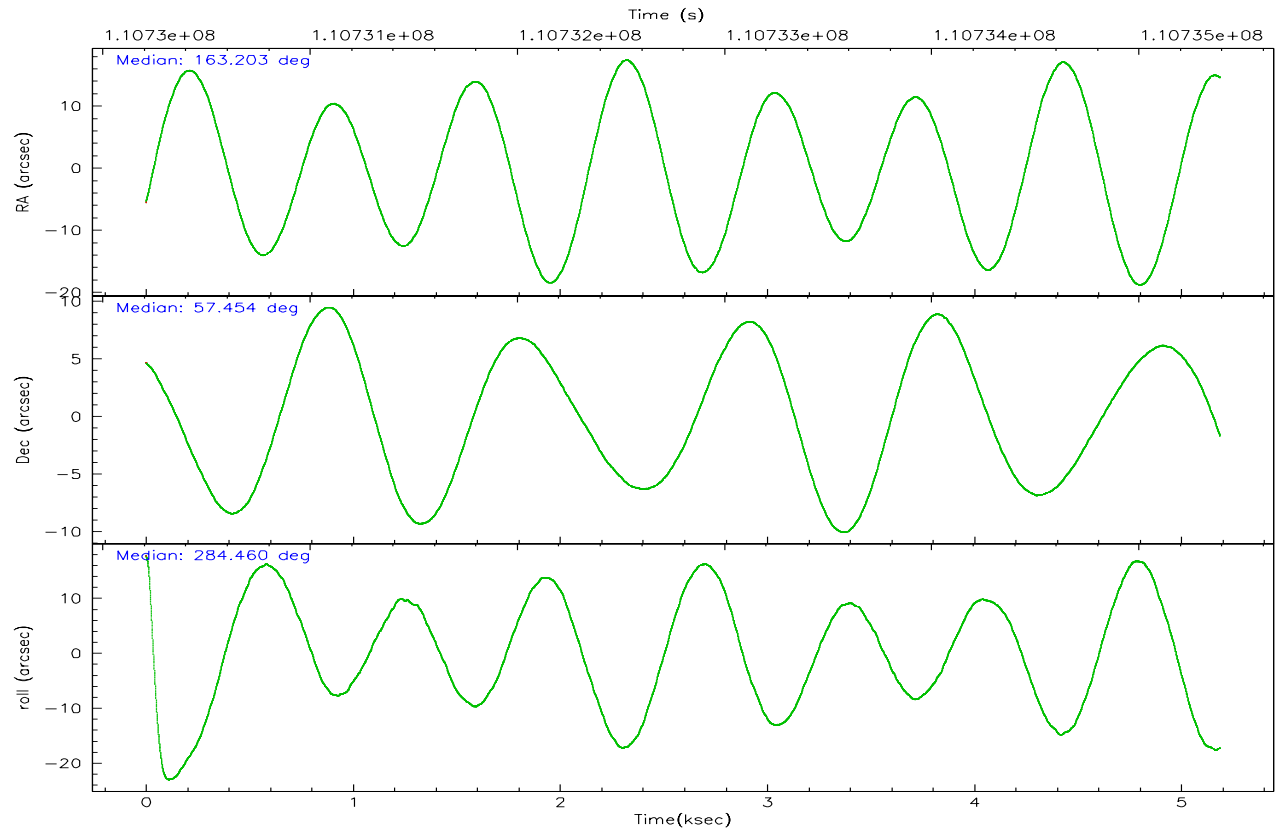
	ccd 0	ccd 1	ccd 2	ccd 3	ccd 6	ccd 8
grade 0 events	1503	1433	1561	1541	1440	2267
	5%	5%	5%	4%	4%	5%
grade 1 events	10	14	20	12	11	30
	0%	0%	0%	0%	0%	0%
grade 2 events	753	683	732	711	686	1719
	2%	2%	2%	2%	2%	4%
grade 3 events	373	378	347	339	334	855
	1%	1%	1%	1%	1%	2%
grade 4 events	304	367	339	338	358	785
	1%	1%	1%	1%	1%	1%
grade 5 events	1074	1188	1024	1211	1223	1539
	3%	4%	3%	3%	4%	3%
grade 6 events	629	689	585	609	722	1997
	2%	2%	1%	1%	2%	5%
grade 7 events	23482	23674	25208	28663	24938	30659
	83%	83%	84%	85%	83%	76%

2.2 Compared Parameters

Parameter	Planned	Actual	Parameter	Planned	Actual
Instrument	ACIS	ACIS	Obspar format version number	6	6
Detector	ACIS-012368	ACIS-012368	Obspar file type	PREDICTED	ACTUAL
Grating	NONE	NONE	Obspar update status	NONE	UPDATED
Data mode	FAINT	FAINT	Number of optional ACIS chips dropped	0	0
Observation mode	POINTING	POINTING	On-chip summing requested	N	N
Pointing RA	163.167072	163.2029746933584	Subarray requested	NONE	NONE
Pointing Dec	57.473768	57.45422832729851	Alternating exposures requested	N	N
Pointing Roll	284.291787	284.4702783620185	Primary exposure time	0.000000	3.2
SIM focus pos (mm)	-0.782348	-0.7809083437167272			
SIM defocus (mm)	0	0.001439871863259334			
SIM translation stage pos (mm)	-233.592463	-233.5874344608287			
SIM translation stage offset (mm)	0	-0.005018542100998502			
Observation start time	110730395.184000	110730019.48469			
Observation start date	2001-07-05T14:25:31	2001-07-05T14:20:19			
Observation end time	110735395.184000	110735529.37241			
Observation end date	2001-07-05T15:48:51	2001-07-05T15:52:09			
Read mode	TIMED	TIMED			

2.3 Aspect



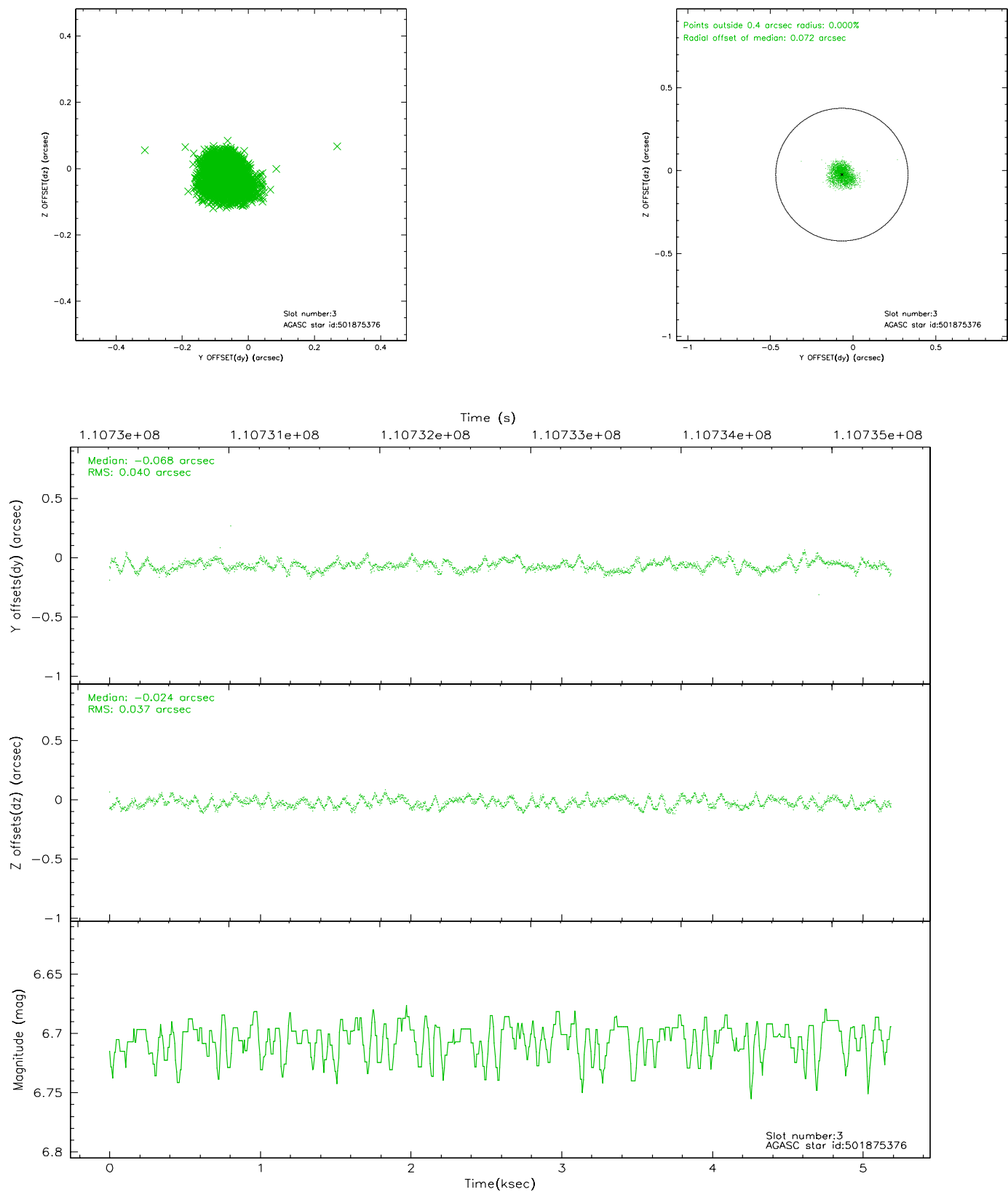


Slot Statistics

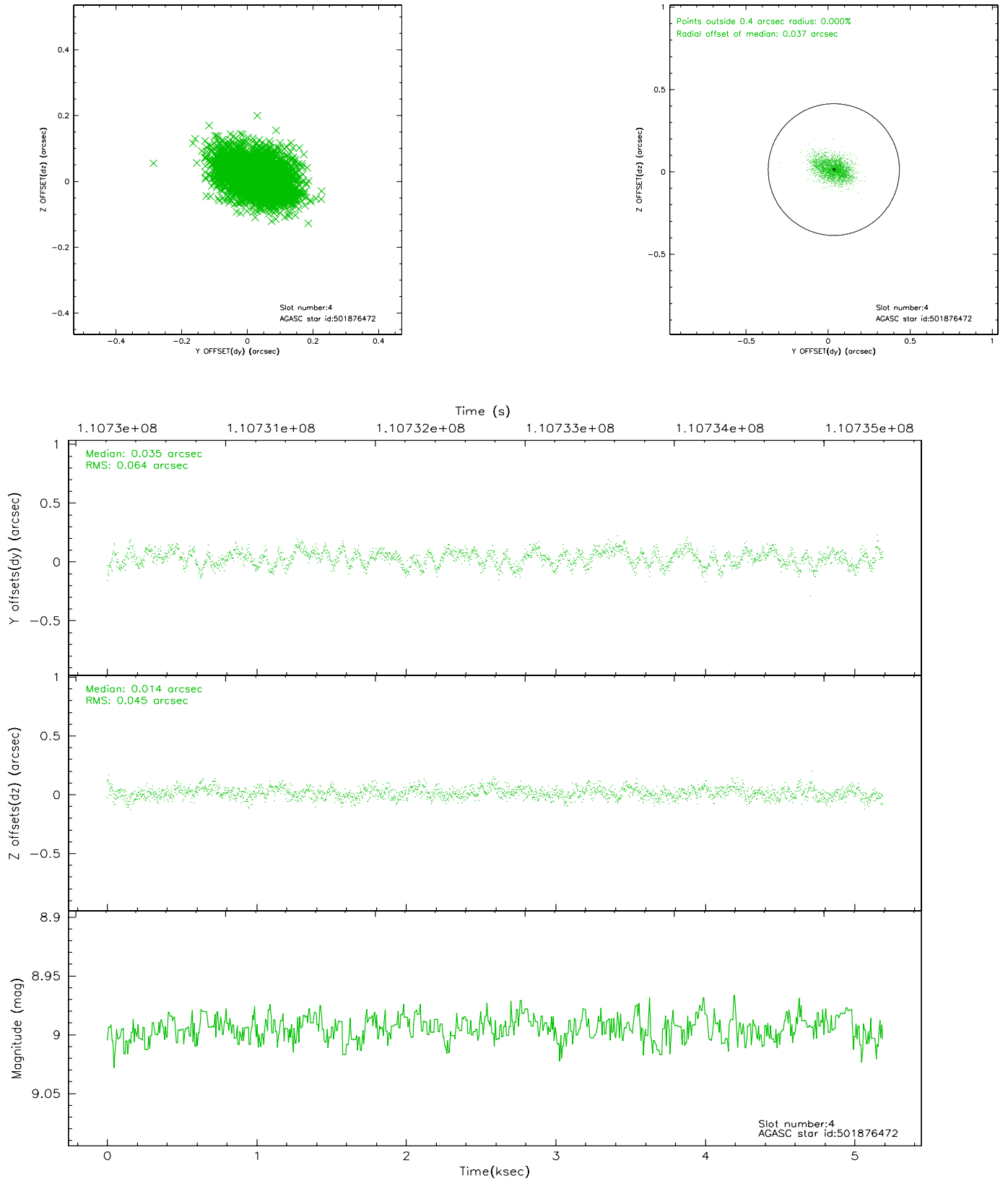
slot	status	id	mag	n_pts	med_dy	med_dz	dr1	dr2	ra	dec	mean_y	mean_z
0	FID	ACIS-I-2	7.16	1266	-0.022	-0.044	0.009	0.014	0.000000	0.000000	-755.58	-836.73
1	FID	ACIS-I-4	7.18	1266	-0.091	0.034	0.005	0.009	0.000000	0.000000	2157.86	1068.97
2	FID	ACIS-I-5	7.23	1266	0.012	0.079	0.009	0.013	0.000000	0.000000	-1807.89	1068.15
3	GUIDE	501875376	6.71	2528	-0.068	-0.024	0.060	0.088	164.111621	57.502963	336.43	1799.04
4	GUIDE	501876472	8.99	2531	0.035	0.014	0.083	0.135	163.621724	57.867447	-1161.39	1194.24
5	GUIDE	501877264	9.30	2532	-0.027	0.020	0.081	0.135	163.254394	57.702218	-756.22	365.90
6	GUIDE	501488528	8.11	2532	0.013	-0.054	0.064	0.103	162.150935	57.312270	61.54	-2054.52
7	GUIDE	501488296	9.75	2526	0.053	0.042	0.118	0.185	164.354320	57.421227	731.57	2187.33

2.4 Star Slots

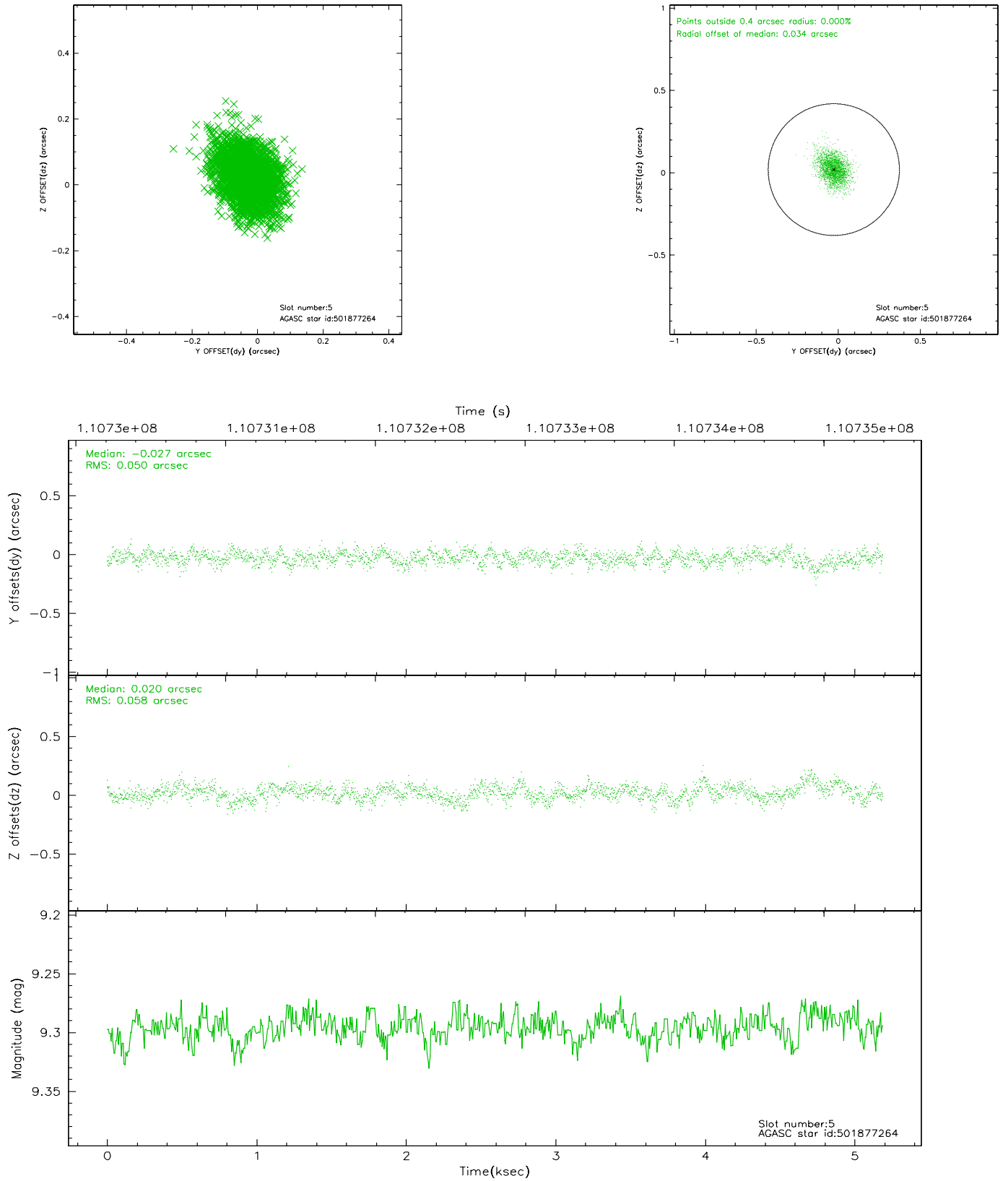
2.4.1 Slot 3



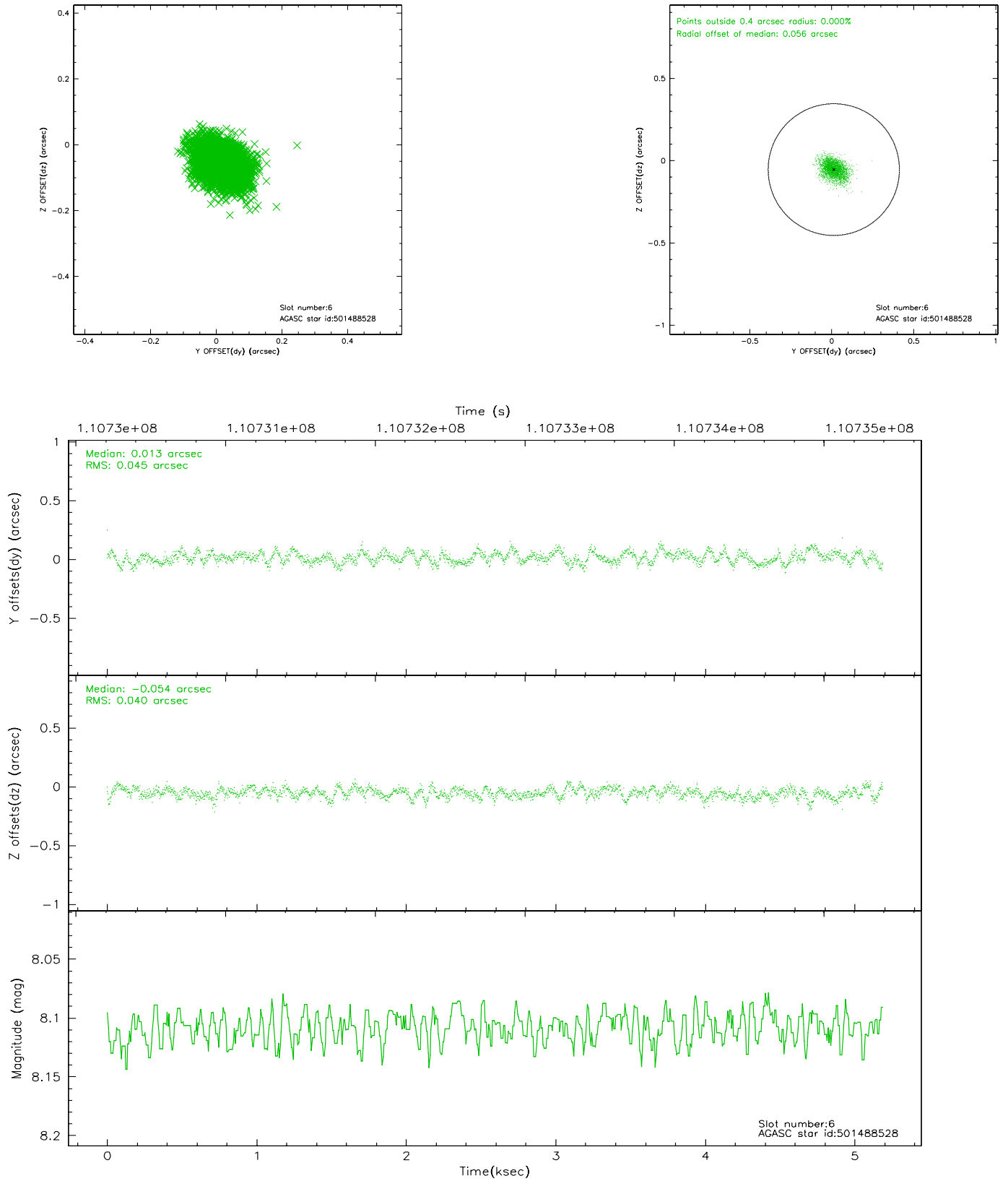
2.4.2 Slot 4



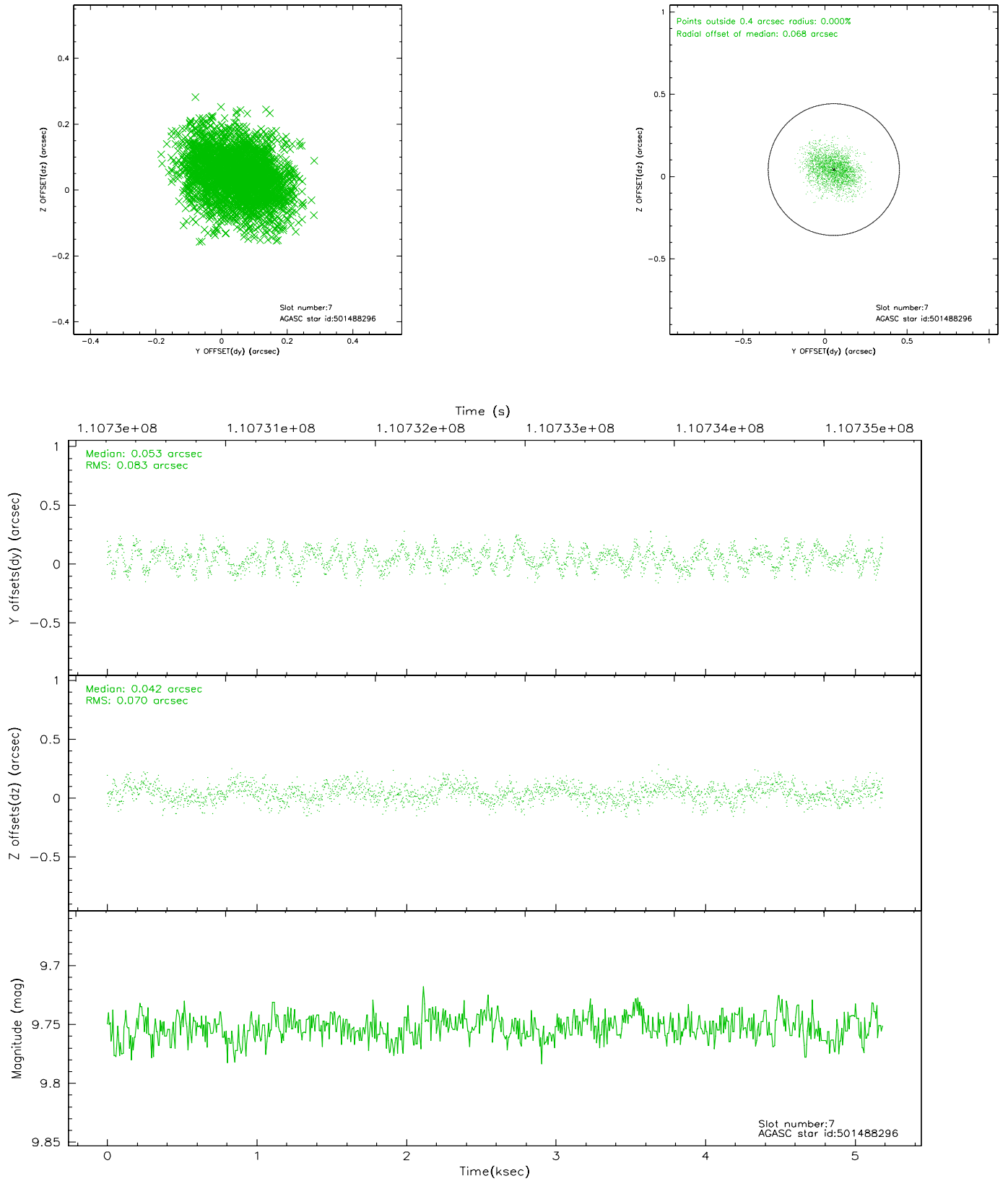
2.4.3 Slot 5



2.4.4 Slot 6

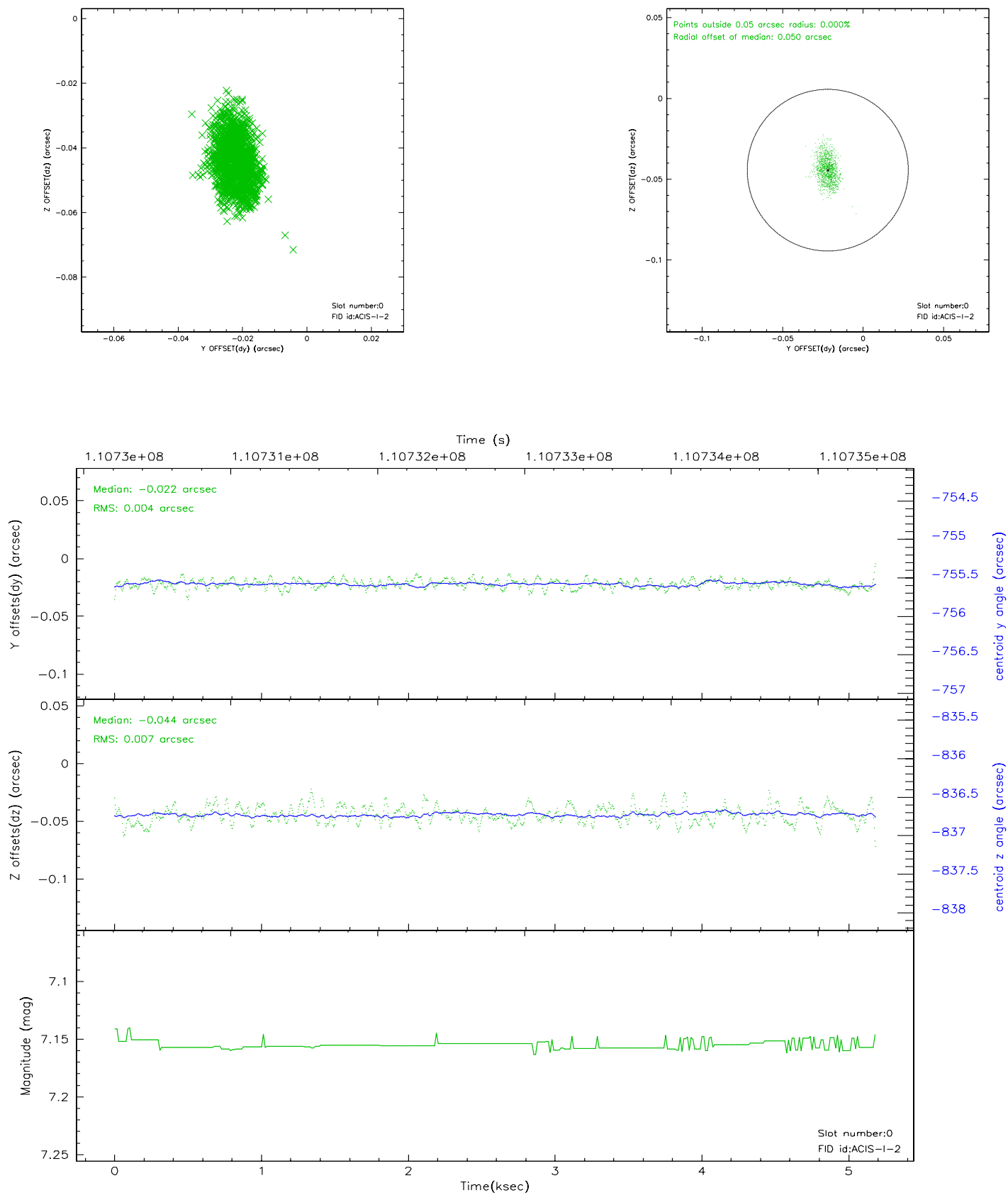


2.4.5 Slot 7

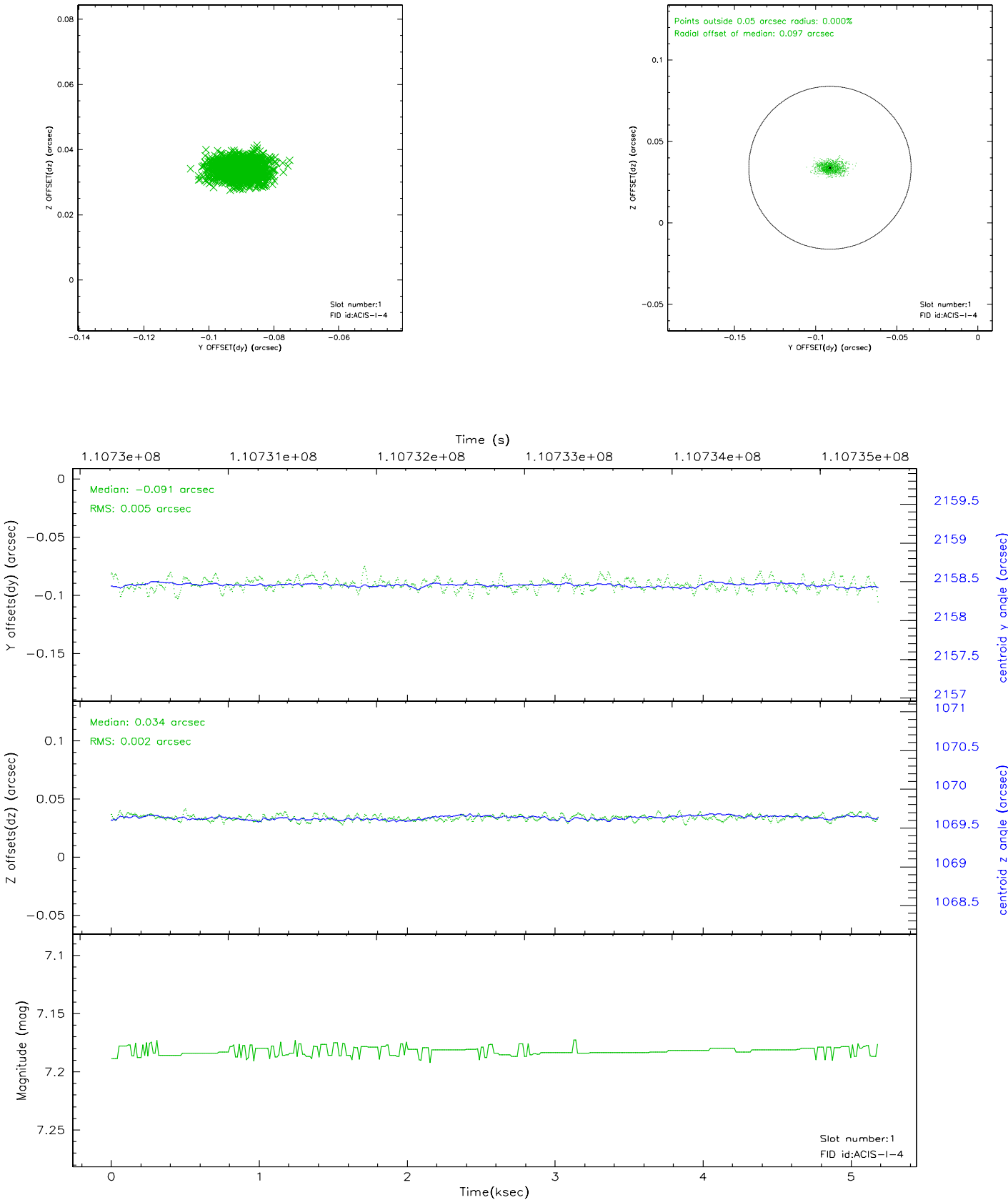


2.5 FID Slots

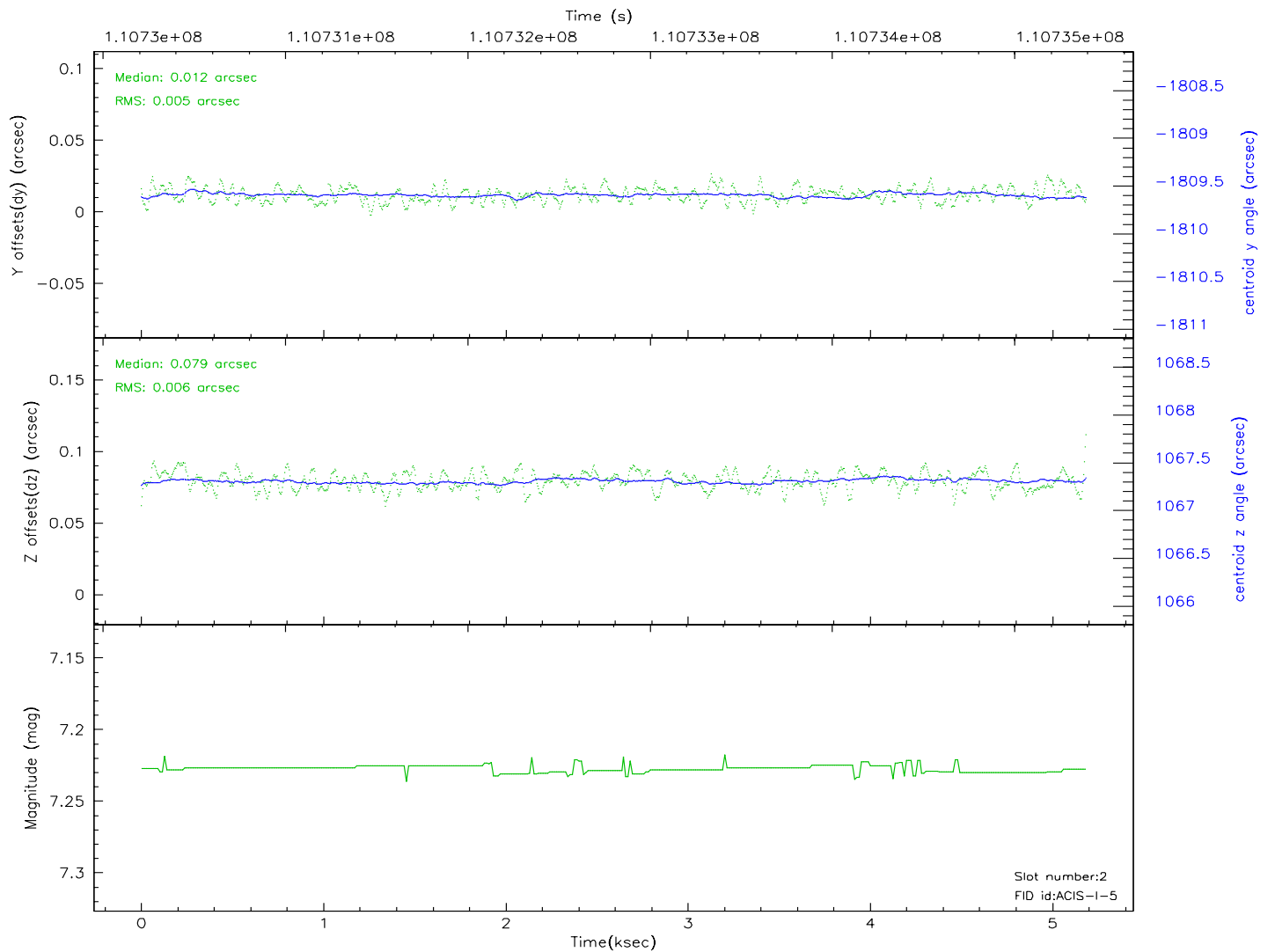
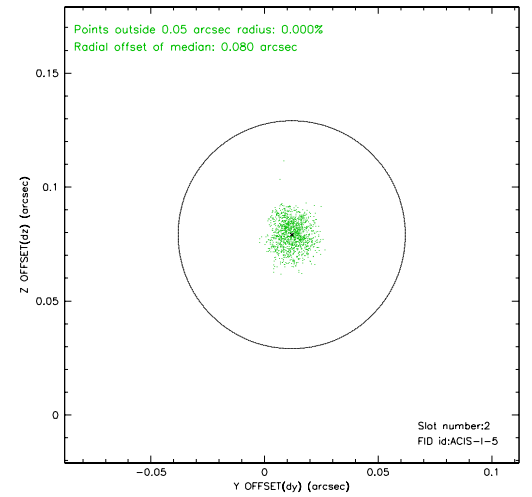
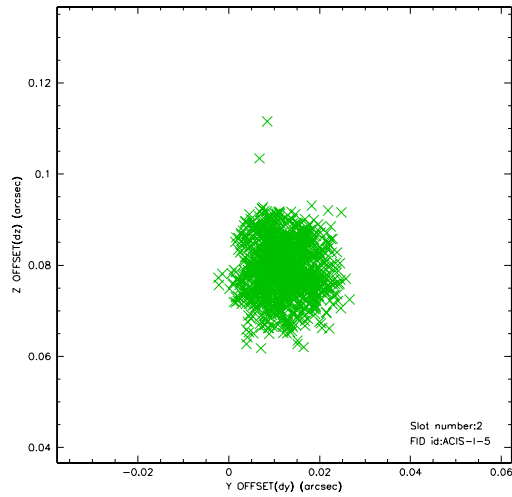
2.5.1 Slot 0



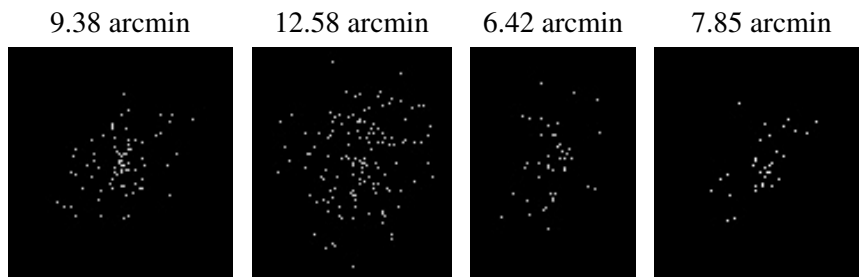
2.5.2 Slot 1



2.5.3 Slot 2



3 Point Sources



A Summary

A.1 Status

V&V Scientist	Beth Sundheim
V&V Date (YYYY-MM-DD)	2006.12.11
V&V Edition	1
V&V Disposition and Status	OK
V&V Charge Time	4.761

A.2 Comments