

# V&V Reference Report

## L2 ASCDS Version : 7.6.9

Observation 1679 - L2 Version 001  
Chandra X-Ray Center

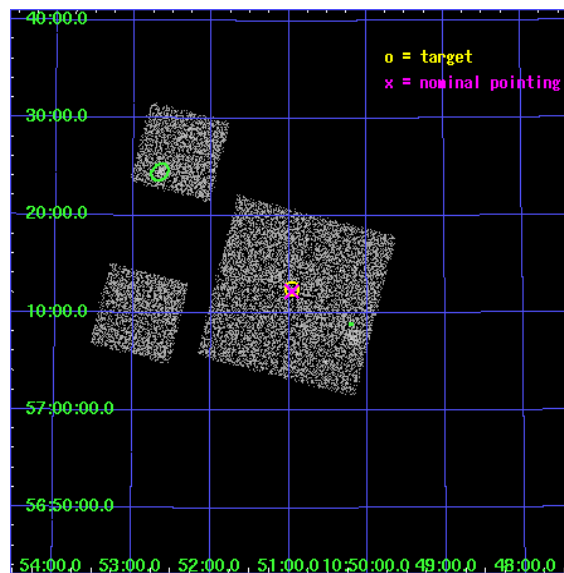
L2 Processing Date : Dec 11 2006

## Contents

<b>1</b>	<b>Front</b>	<b>2</b>
<b>2</b>	<b>OBI</b>	<b>3</b>
2.1	OBI . . . . .	3
2.1.1	Images . . . . .	3
2.1.2	Bias . . . . .	3
2.1.3	Parameters . . . . .	4
2.1.4	Events . . . . .	4
2.2	Compared Parameters . . . . .	5
2.3	Aspect . . . . .	6
2.4	Star Slots . . . . .	9
2.4.1	Slot 3 . . . . .	9
2.4.2	Slot 4 . . . . .	10
2.4.3	Slot 5 . . . . .	11
2.4.4	Slot 6 . . . . .	12
2.4.5	Slot 7 . . . . .	13
2.5	FID Slots . . . . .	14
2.5.1	Slot 0 . . . . .	14
2.5.2	Slot 1 . . . . .	15
2.5.3	Slot 2 . . . . .	16
<b>3</b>	<b>Point Sources</b>	<b>17</b>
<b>A</b>	<b>Summary</b>	<b>18</b>
A.1	Status . . . . .	18
A.2	Comments . . . . .	18

# 1 Front

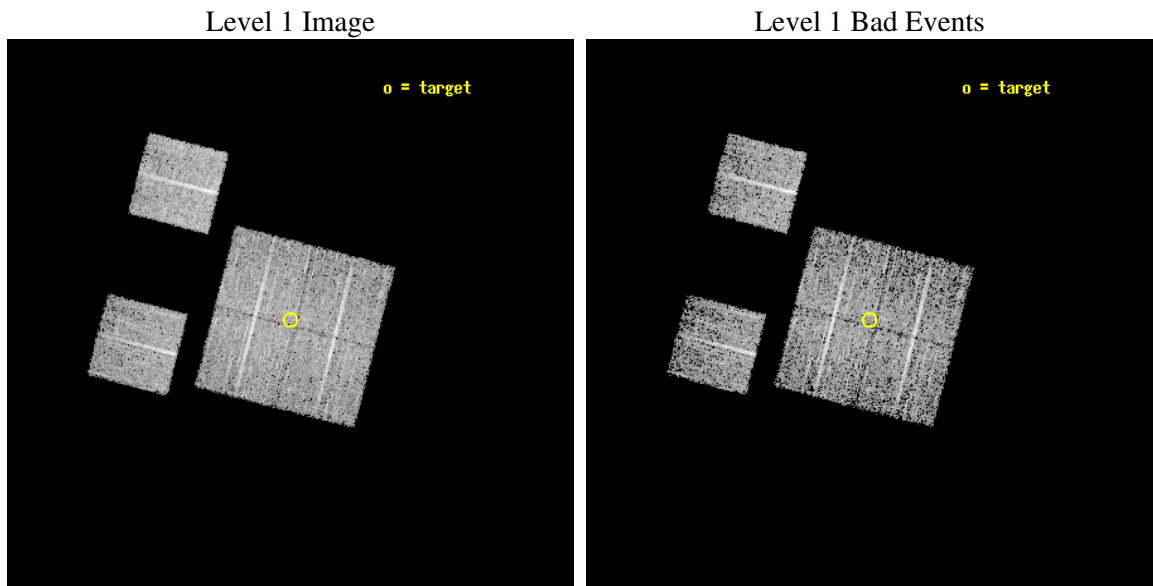
seq_num	900038
obs_id	1679
title	LOCKMAN HOLE SHALLOW SURVEY
observer	Dr. Stephen Murray
object	LOCKMAN HOLE #5
dtcycle	0
cycle	P
ra_targ	162.741667
dec_targ	57.208889
ra_nom	162.74035468354
dec_nom	57.204229494189
roll_nom	284.45830585043
revision	2
ontime	4761.6000044346
livetime	4701.3057580871
ontime0	4761.6000044346
ontime1	4761.6000044346
ontime2	4761.6000044346
ontime3	4761.6000044346
ontime6	4761.6000044346
ontime8	4761.6000044346
l2events	18283



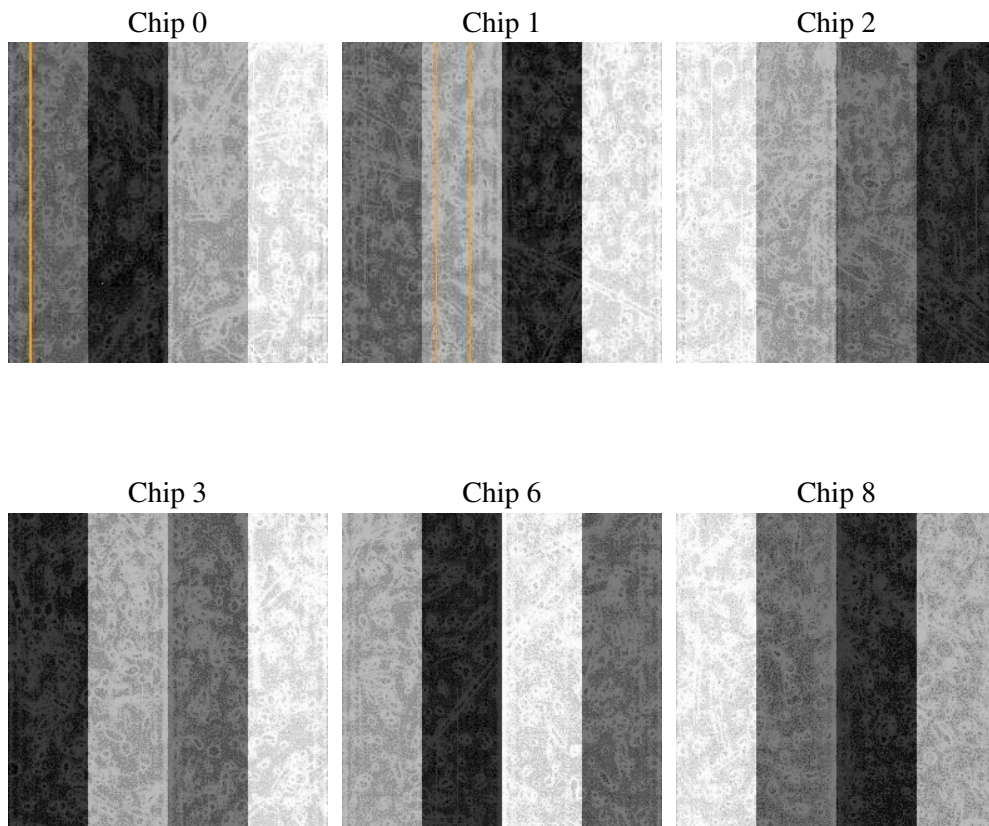
## 2 OBI

### 2.1 OBI

#### 2.1.1 Images



#### 2.1.2 Bias



### 2.1.3 Parameters

obi_num	0
ascdsver	7.6.9
caldsver	3.2.4
date	2006-12-11T17:10:03
revision	2

sched_exp_time	5000.000000
ontime	4764.2660761476
ontime0	4764.2660761327
ontime1	4764.2660562247
ontime2	4764.2660761327
ontime3	4764.2660761476
ontime6	4764.2660960555
ontime8	4764.2660960555
l1events	189330

### 2.1.4 Events

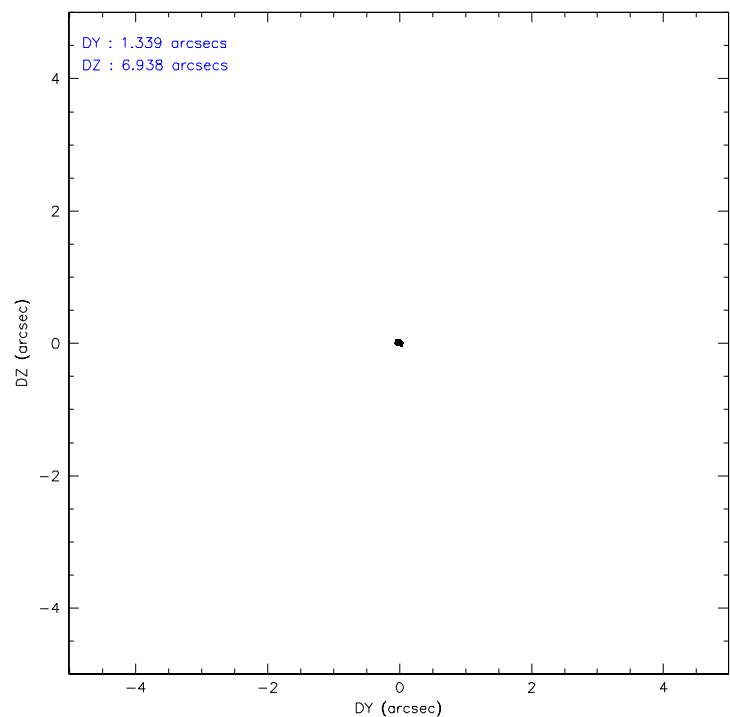
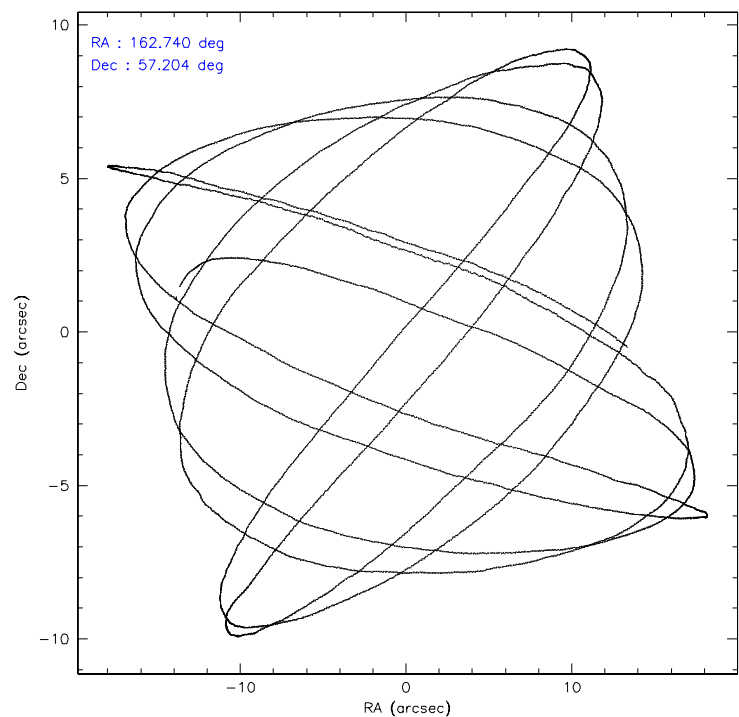
	ccd 0	ccd 1	ccd 2	ccd 3	ccd 6	ccd 8
level 1 events	28536	28633	31475	31252	29326	40108
rejected events	24806	24955	28080	27788	25948	32596
rejected %	86%	87%	89%	88%	88%	81%

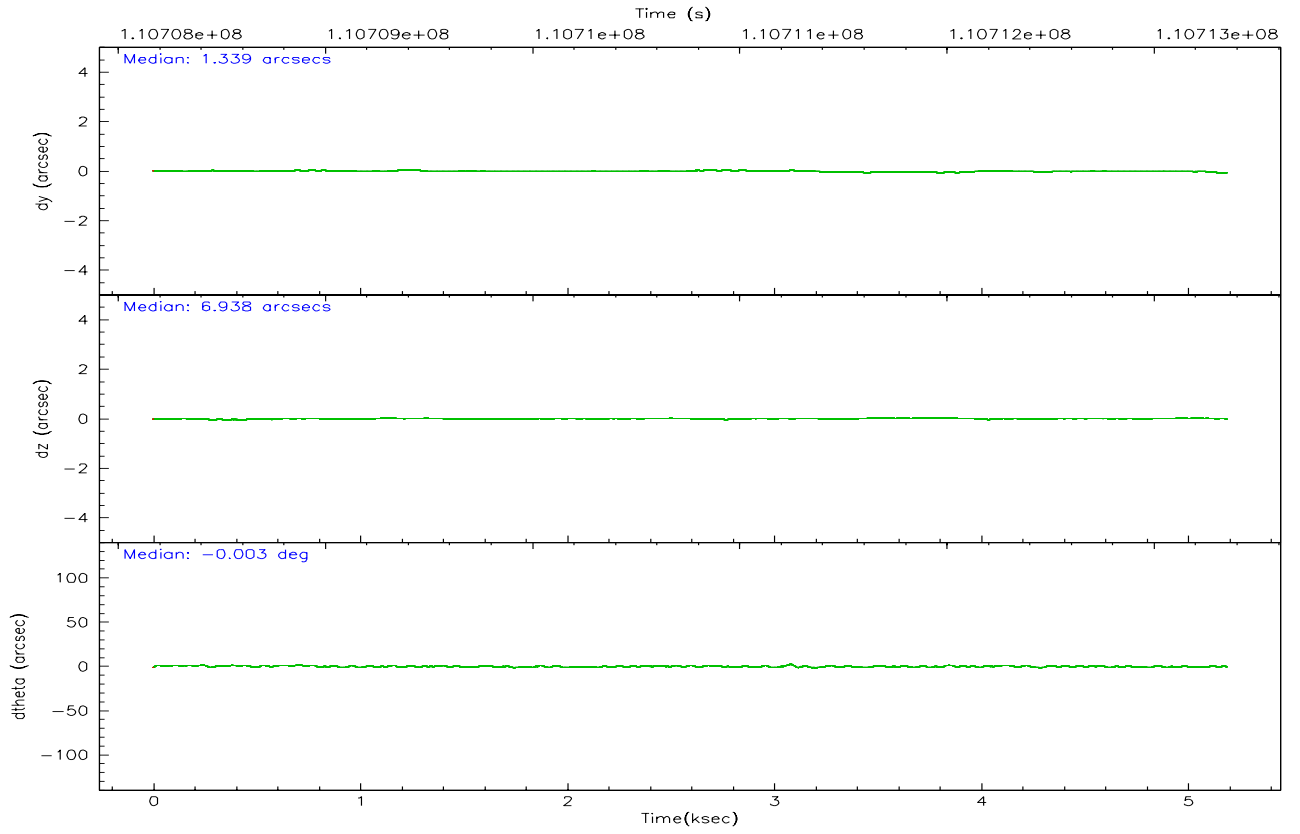
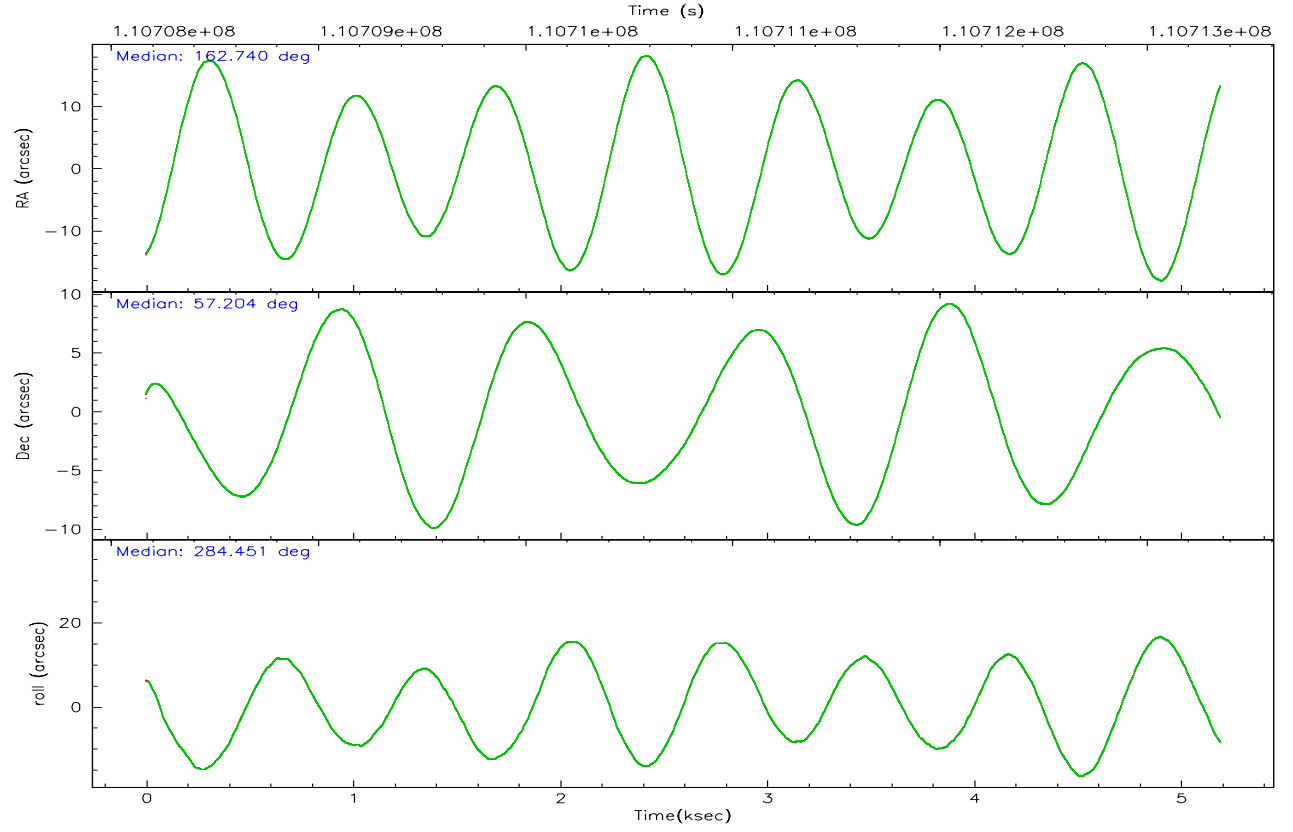
	ccd 0	ccd 1	ccd 2	ccd 3	ccd 6	ccd 8
grade 0 events	1646	1496	1508	1442	1320	2276
	5%	5%	4%	4%	4%	5%
grade 1 events	11	13	15	14	19	27
	0%	0%	0%	0%	0%	0%
grade 2 events	796	753	671	720	709	1621
	2%	2%	2%	2%	2%	4%
grade 3 events	332	371	299	311	348	853
	1%	1%	0%	0%	1%	2%
grade 4 events	331	349	320	342	339	794
	1%	1%	1%	1%	1%	1%
grade 5 events	1063	1173	1034	1175	1188	1610
	3%	4%	3%	3%	4%	4%
grade 6 events	628	710	600	652	662	1970
	2%	2%	1%	2%	2%	4%
grade 7 events	23729	23768	27028	26596	24741	30957
	83%	83%	85%	85%	84%	77%

## 2.2 Compared Parameters

Parameter	Planned	Actual	Parameter	Planned	Actual
Instrument	ACIS	ACIS	Obspar format version number	6	6
Detector	ACIS-012368	ACIS-012368	Obspar file type	PREDICTED	ACTUAL
Grating	NONE	NONE	Obspar update status	NONE	UPDATED
Data mode	FAINT	FAINT	Number of optional ACIS chips dropped	0	0
Observation mode	POINTING	POINTING	On-chip summing requested	N	N
Pointing RA	162.704829	162.7403546835399	Subarray requested	NONE	NONE
Pointing Dec	57.223767	57.20422949418886	Alternating exposures requested	N	N
Pointing Roll	284.279500	284.4583058504315	Primary exposure time	0.000000	3.2
SIM focus pos (mm)	-0.782348	-0.7809083437167272			
SIM defocus (mm)	0	0.001439871863259334			
SIM translation stage pos (mm)	-233.592463	-233.5874344608287			
SIM translation stage offset (mm)	0	-0.005018542100998502			
Observation start time	110708355.184000	110707852.83382			
Observation start date	2001-07-05T08:18:11	2001-07-05T08:10:52			
Observation end time	110713355.184000	110713489.82154			
Observation end date	2001-07-05T09:41:31	2001-07-05T09:44:49			
Read mode	TIMED	TIMED			

## 2.3 Aspect





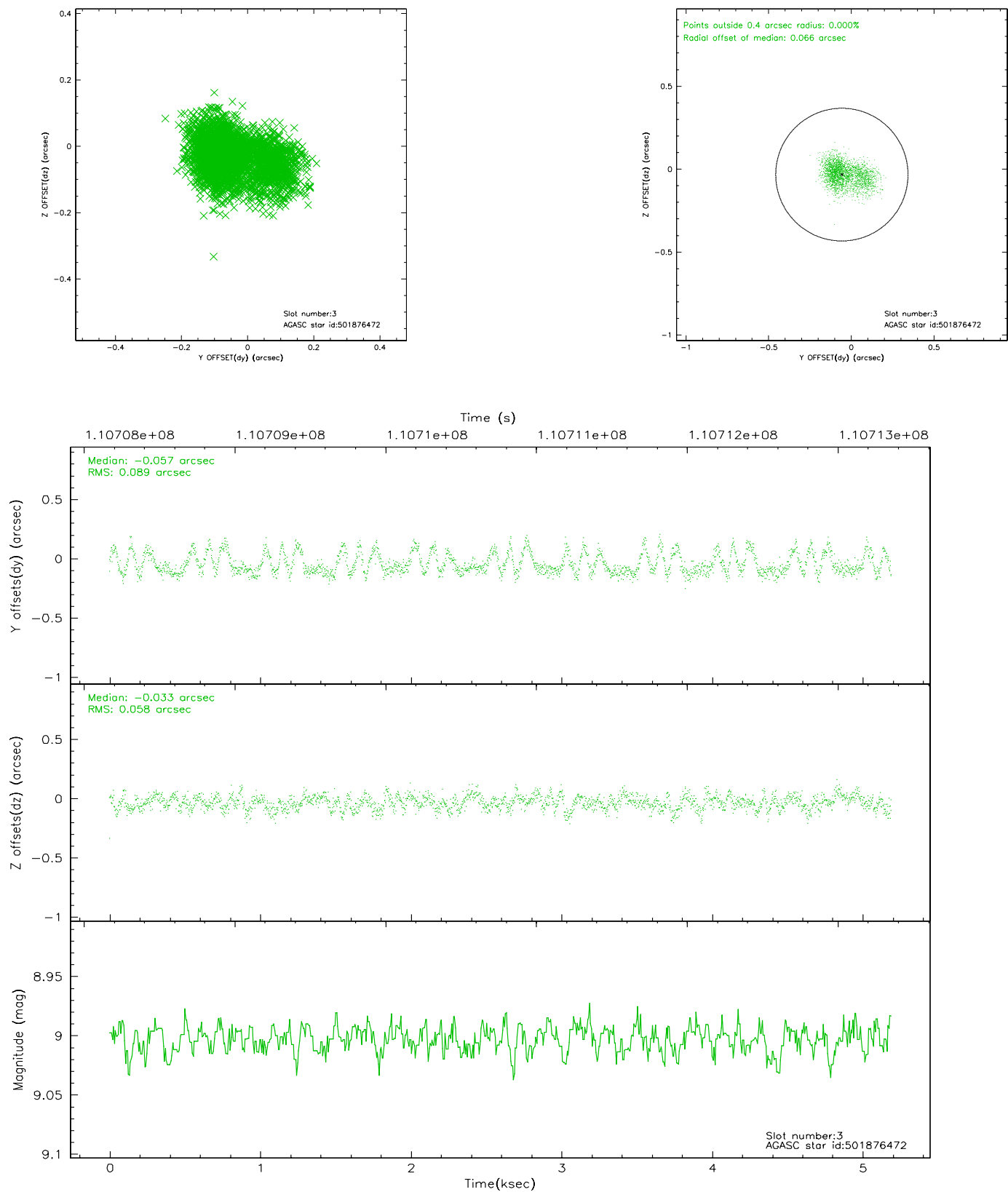
### Slot Statistics

slot	status	id	mag	n_pts	med_dy	med_dz	dr1	dr2	ra	dec	mean_y	mean_z
0	FID	ACIS-I-2	7.15	1267	-0.023	-0.043	0.009	0.015	0.000000	0.000000	-755.68	-836.75
1	FID	ACIS-I-4	7.18	1267	-0.091	0.034	0.005	0.010	0.000000	0.000000	2157.76	1068.95
2	FID	ACIS-I-5	7.23	1267	0.013	0.078	0.009	0.014	0.000000	0.000000	-1807.99	1068.12
3	GUIDE	501876472	9.00	2532	-0.057	-0.033	0.111	0.189	163.621724	57.867447	-1824.47	2275.72
4	GUIDE	501486400	9.28	2532	0.065	-0.078	0.125	0.191	162.514901	56.545412	2272.66	-966.21
5	GUIDE	501877264	9.32	2528	-0.030	0.153	0.118	0.181	163.254394	57.702218	-1411.94	1450.22
6	GUIDE	501487600	10.32	2531	0.041	0.075	0.225	0.347	161.712206	56.979739	357.12	-2099.37
7	GUIDE	501488528	8.11	2532	-0.030	-0.120	0.082	0.129	162.150935	57.312270	-578.31	-964.78

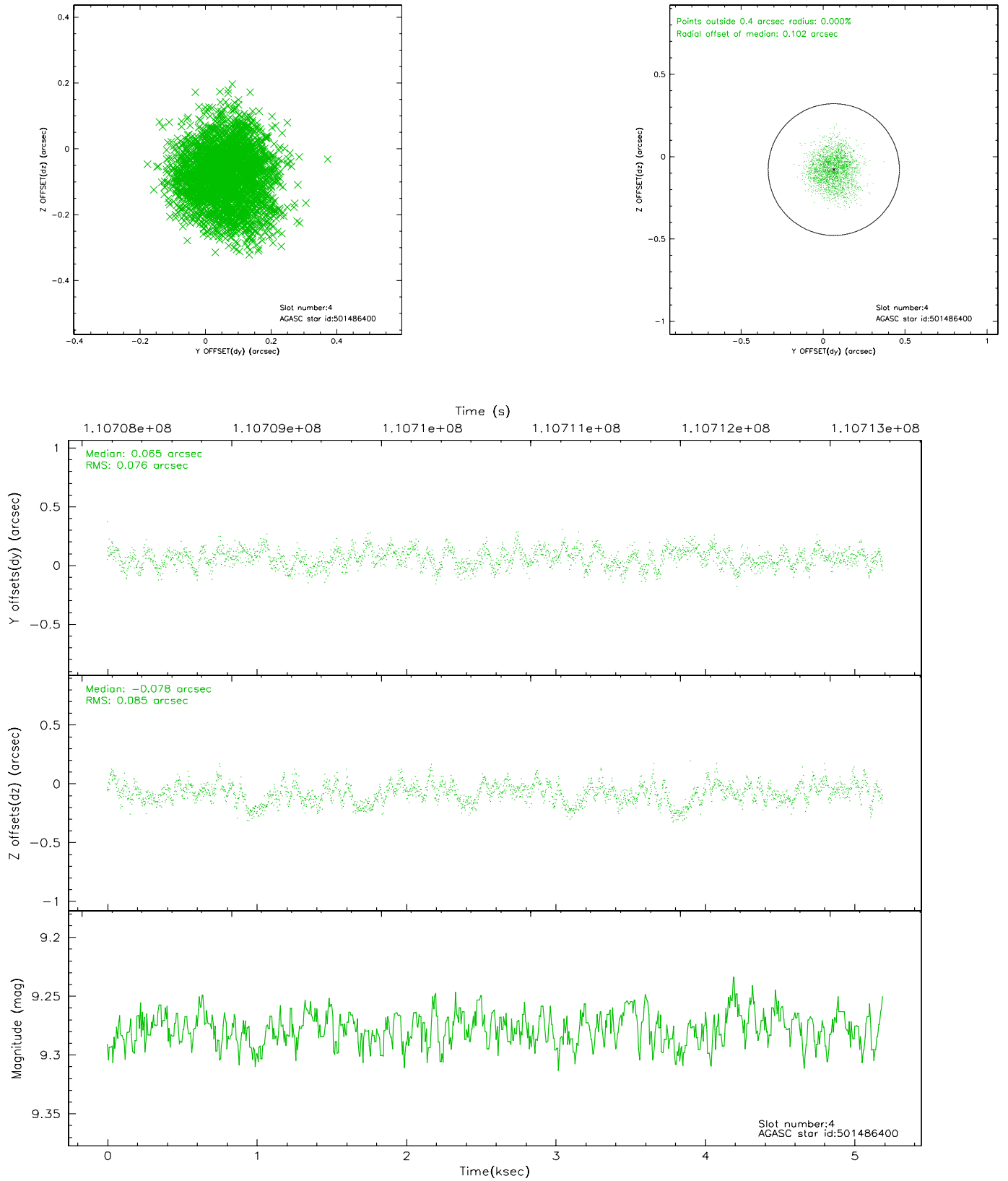


## 2.4 Star Slots

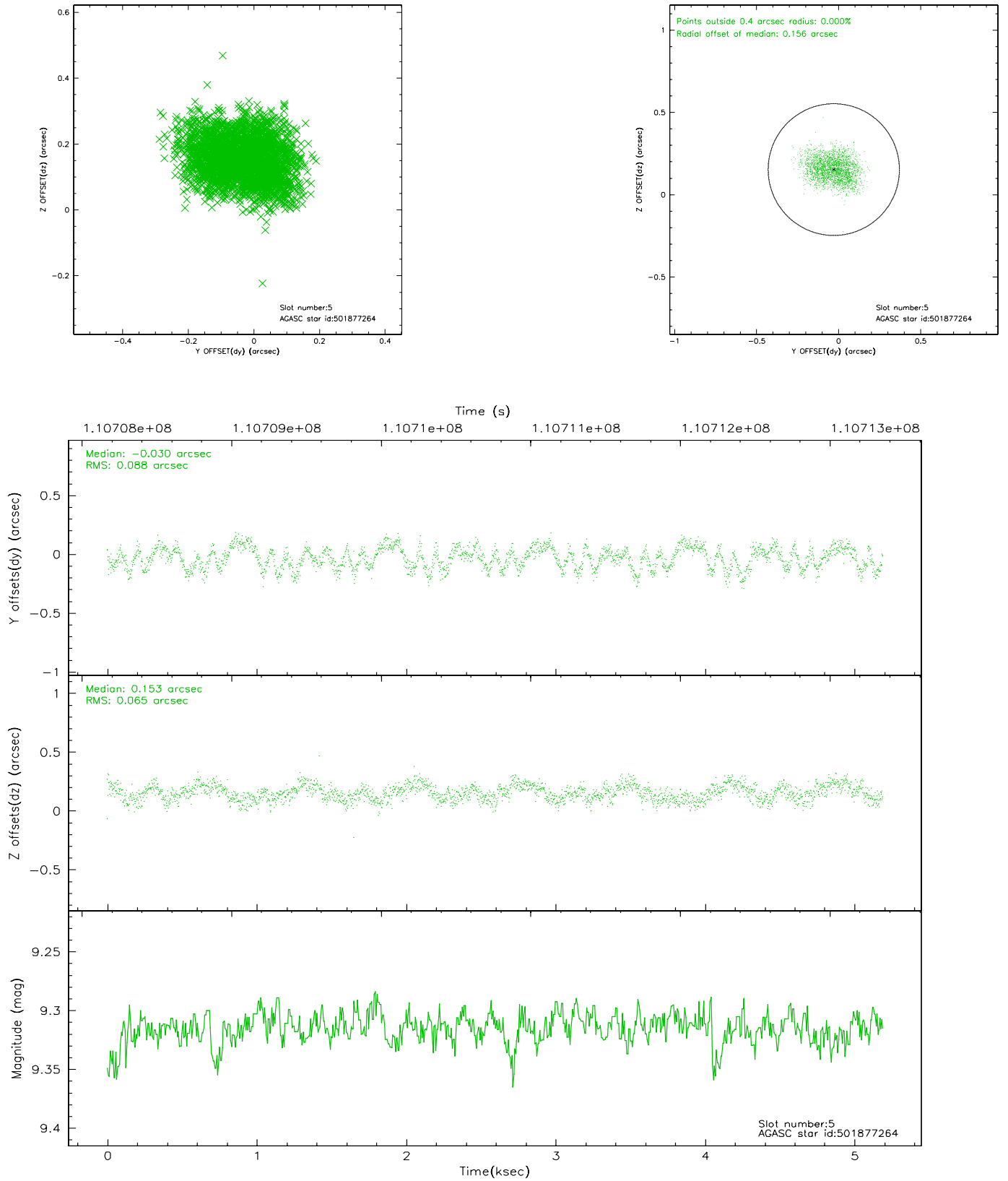
### 2.4.1 Slot 3



## 2.4.2 Slot 4



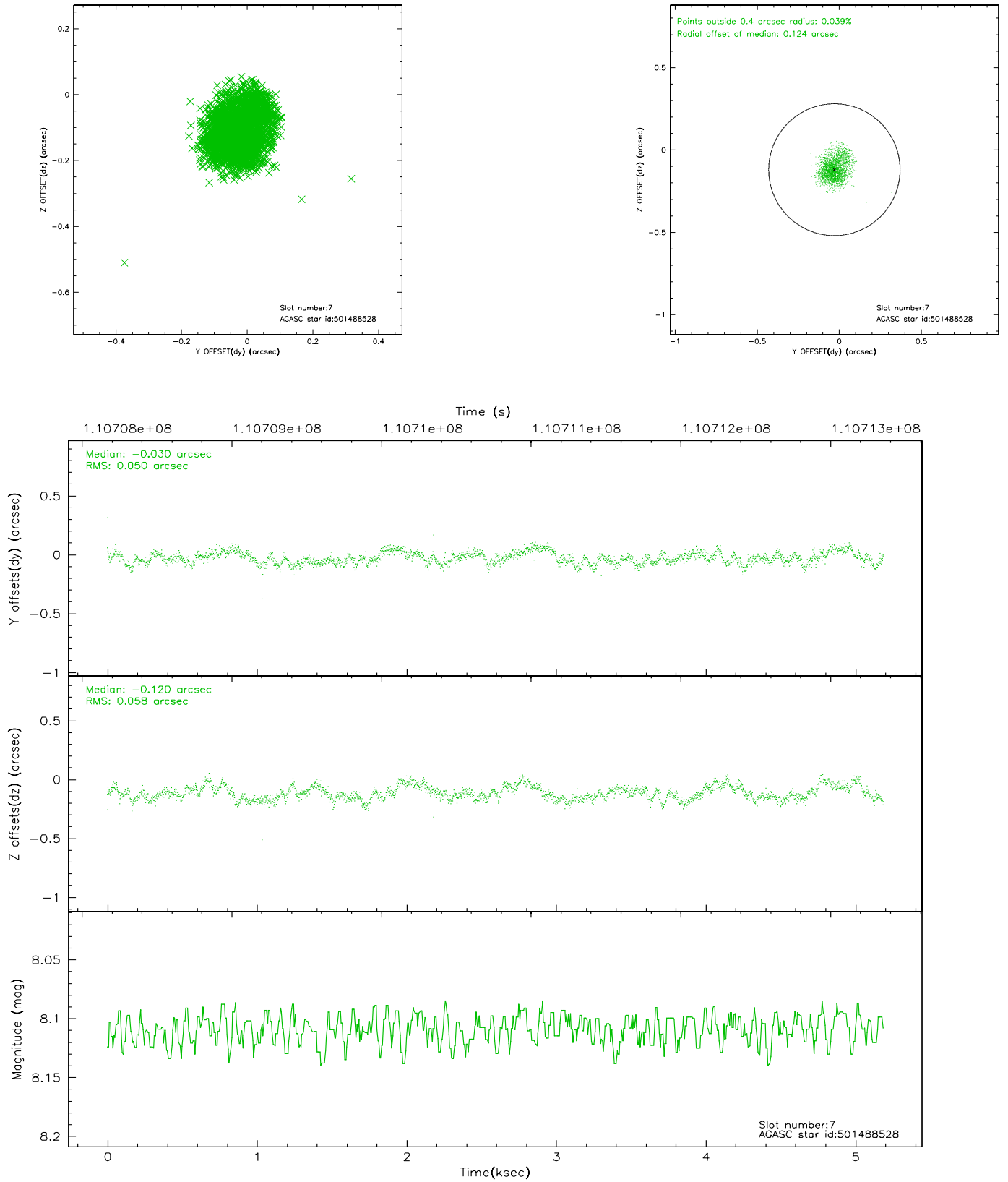
### 2.4.3 Slot 5



## 2.4.4 Slot 6

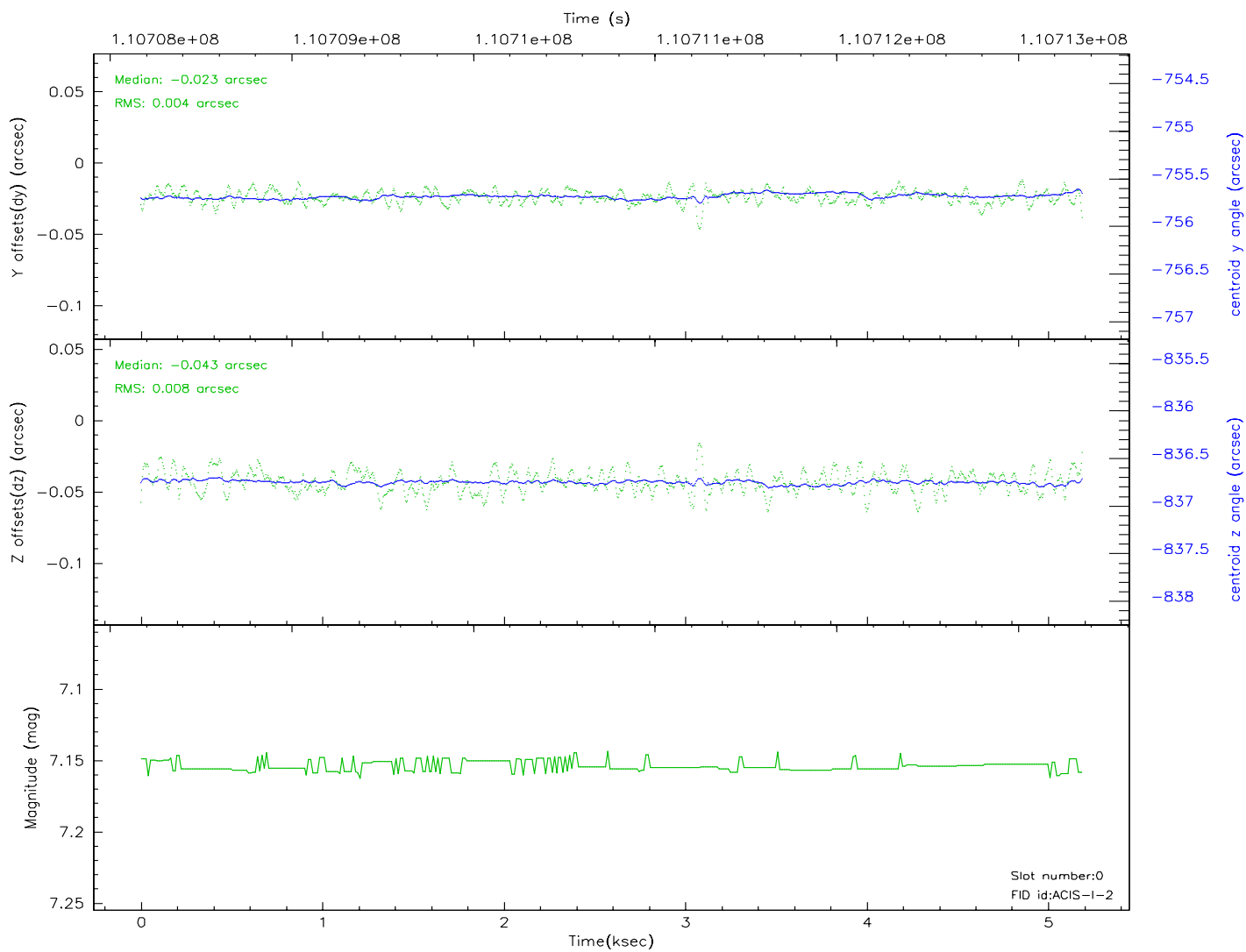
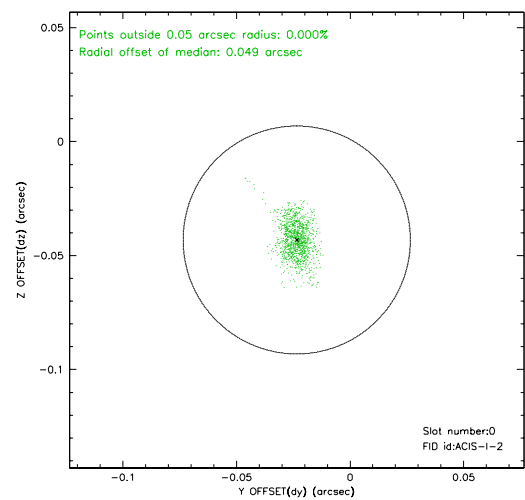
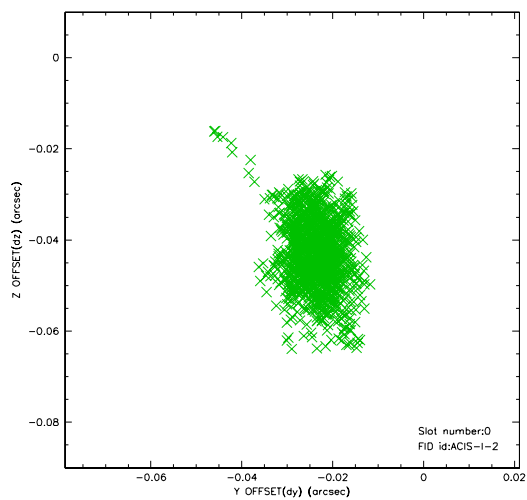


## 2.4.5 Slot 7

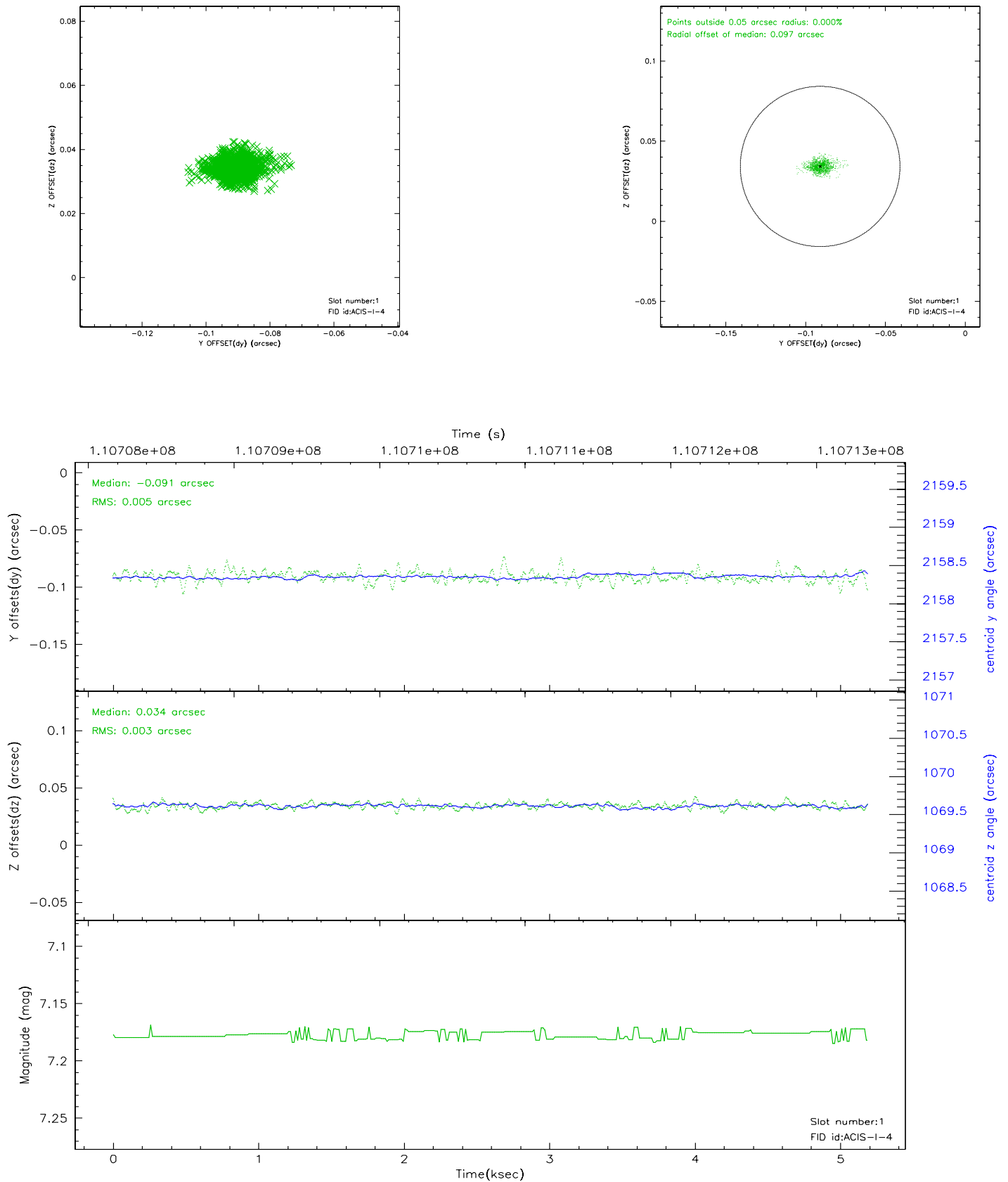


## 2.5 FID Slots

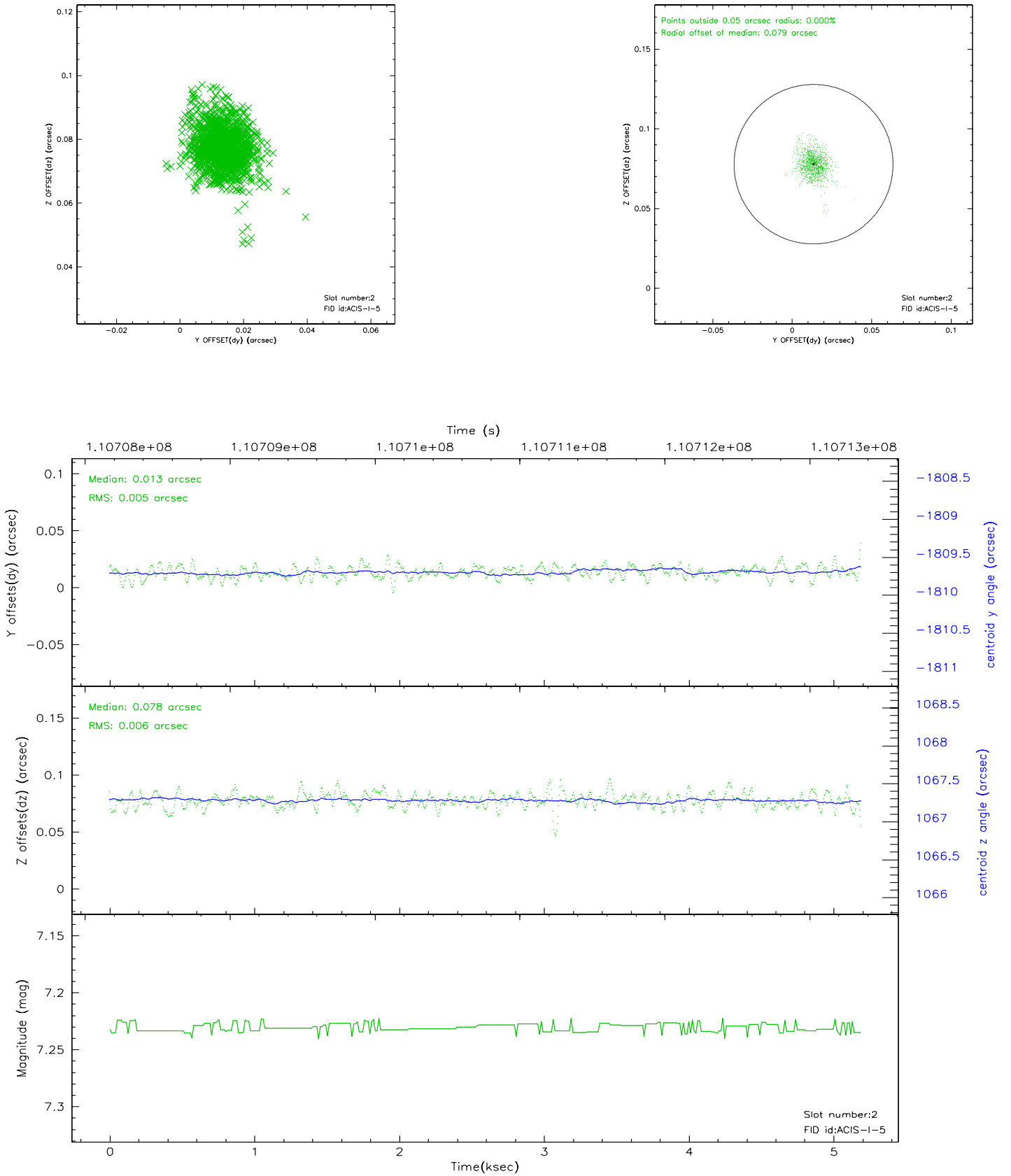
### 2.5.1 Slot 0



## 2.5.2 Slot 1

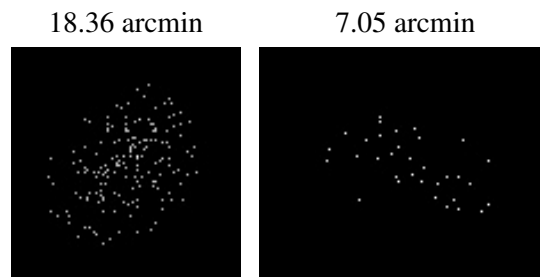


### 2.5.3 Slot 2





### 3 Point Sources



## A Summary

### A.1 Status

V&V Scientist	Beth Sundheim
V&V Date (YYYY-MM-DD)	2006.12.11
V&V Edition	1
V&V Disposition and Status	OK
V&V Charge Time	4.761

### A.2 Comments